

1 **The potential impact of Omicron and future variants of concern on SARS-CoV-2**  
2 **transmission dynamics and public health burden: a modelling study**

3 Epke A Le Rutte PhD\*<sup>a,b</sup>, Andrew J Shattock PhD\*<sup>a,b</sup>, Nakul Chitnis PhD<sup>a,b</sup>, Sherrie L Kelly  
4 PhD<sup>a,b</sup>, Melissa A Penny PhD<sup>a,b</sup>

5

6 <sup>a</sup> Swiss Tropical and Public Health Institute, Basel, Switzerland

7 <sup>b</sup> University of Basel, Basel, Switzerland

8 \* These authors contributed equally to this work

9

10 Correspondence to Prof Melissa A Penny

11 **[melissa.penny@unibas.ch](mailto:melissa.penny@unibas.ch)**

12

13

## 14 **Summary**

15

16 **SARS-CoV-2 variant Omicron (B.1.1.529) was classified as a variant of concern (VOC)**  
17 **on November 26, 2021. (1, 2) The infectivity, severity, and immune evasion properties of**  
18 **Omicron relative to the Delta variant would determine 1) the probability of dominant**  
19 **future transmission, and 2) the impact on disease burden. (3, 4) Here we apply individual-**  
20 **based transmission model OpenCOVID to identify thresholds for Omicron’s or any**  
21 **VOC’s potential future dominance, impact on health, and risk to health systems; and**  
22 **identify for which combinations of viral properties, current interventions would be**  
23 **sufficient to control transmission. We show that, with first-generation SARS-CoV-2**  
24 **vaccines (5) and limited physical distancing in place, the threshold for Omicron’s future**  
25 **dominance was primarily be driven by its degree of infectivity. However, we identified**  
26 **that a VOC’s potential dominance will not necessarily lead to increased public health**  
27 **burden. Expanded vaccination, that includes a third-dose for adults and child vaccination**  
28 **strategies, was projected to have the biggest public health benefit for a highly infective,**  
29 **highly severe VOC with low immune evasion capacity. However, a highly immune evading**  
30 **variant that becomes dominant would likely require alternative measures for control,**  
31 **such as strengthened physical distancing measures, novel treatments, and second-**  
32 **generation vaccines. These findings provide quantitative guidance to decision-makers at**  
33 **a critical time while Omicron’s properties are being assessed and preparedness for new**  
34 **VOC’s is eminent. (6) We emphasize the importance of both genomic and population**  
35 **epidemiological surveillance.**

36

## 37 **Introduction**

38 SARS-CoV-2 has been mutating continuously since its emergence in December 2019, leading  
39 to viral variants with varying infectivity, severity, and immune evading properties. On 26  
40 November 2021, the World Health Organization identified Omicron (B.1.1.529) as a new  
41 variant of concern (VOC) after approximately seven months of Delta variant (B.1.617.2)  
42 dominating global transmission. (1) Within one week, 24 countries had reported cases of the  
43 Omicron variant, (7) with infections also occurring in previously infected and double-  
44 vaccinated individuals. (8) By mid-January 2022, more than 50% of all sequenced cases in  
45 Europe were caused by Omicron. (9) We include BA.2 in Omicron's figures as it is a sub-  
46 lineage of B.1.1.529. Whilst scientific research assessing the infectivity, severity, and immune  
47 evasion properties of Omicron has been ongoing, understanding the potential scope of the  
48 associated public health burden of Omicron and future variants of concern (VOC) is of top  
49 priority. (2)

50 In many European settings, high vaccination rates - particularly among those most at risk of  
51 severe disease - have led to a reduction in disease burden. However, protection of the most  
52 vulnerable and maintaining low levels of SARS-CoV-2 transmission in the northern hemisphere  
53 has been under threat at the time of Omicron emergence for multiple reasons. Firstly, indoor  
54 contacts have been increasing during the cooler season. Secondly, immunity of the most  
55 vulnerable population (people 65+ and those with comorbidities) had started to wane since they  
56 were primarily vaccinated in the first quarter of 2021. (10) Thirdly, relaxation of most non-  
57 pharmaceutical interventions (NPIs) since the summer period of 2021 and fatigue of COVID-  
58 19 restrictions had led to increased contacts. (11) The emergence of Omicron in December 2021  
59 combined with these threats called into question whether the vaccination strategies identified  
60 at the time would be sufficient.

61 Mathematical models have been used to represent transmission dynamics of SARS-CoV-2 and  
62 have supported decision-makers throughout the pandemic on the implementation and relaxation  
63 of control strategies. (12-16) Here we further developed and applied OpenCOVID, an  
64 individual-based model of SARS-CoV-2 transmission and COVID-19 disease, which includes  
65 seasonality patterns, waning immunity profiles, vaccination and NPI strategies, and properties  
66 for multiple variants. (15) We applied the OpenCOVID model to represent a general European  
67 setting and simulated the emergence of a novel variant. We analysed disease dynamics for a  
68 wide range of infectivity, severity, and immune evasion properties – relative to the Delta VOC  
69 – representing a large range of potential Omicron or any other VOC properties. This allowed  
70 us to determine the potential for Omicron to become the new dominant variant, and to estimate  
71 its potential future public health burden. We further identified combinations of properties for  
72 which first-generation vaccines, in the absence of strong NPIs, would be sufficient to contain  
73 transmission and public health burden (i.e., new SARS-CoV-2 infections, hospital occupancy,  
74 and COVID-19 related deaths) and identified those combinations for which additional measures  
75 would be required.

## 76 **Results**

### 77 **Disease dynamics projections**

78 We explored a wide range of potential infectivity and severity levels (between zero and two) of  
79 the new Omicron variant relative to Delta, and the full range of immune evading capacity from  
80 0% (similar to Delta) to 100% (no protection from current vaccines and previously acquired  
81 natural immunity after infection). Disease dynamics were simulated over a six-month period  
82 beginning 1 December 2021 when Omicron emerged, and the cooler weather arrived. We  
83 assume an initial effective reproduction number of 1.2, the absence of strict NPIs (e.g.,  
84 lockdowns), and vaccination coverage by risk group as described in Supplementary Table 1.

85 We compared two future vaccination scenarios. Firstly, expanded vaccination, with the  
86 administration of a third-dose six months after the second dose for individuals older than 12  
87 years of age, and administration of vaccines for children aged 5-11 years. Secondly, we  
88 simulated a scenario with no future vaccine rollout (no third-dose vaccination in over 12-year  
89 olds and no vaccination of 5-11 year-olds). The latter leading to decay of population-level  
90 vaccine-induced immunity over time.

### 91 **Drivers of Omicron’s potential dominance**

92 Infectivity and immune evasion were identified as the drivers behind Omicron’s potential  
93 dominance, with negligible effect from increasing severity. For an infectivity factor of 1, a 25%  
94 immune evasion property was predicted sufficient for dominance within six months, while for  
95 a 100% immune evading property an infectivity factor of 0.5 (half the infectivity of Delta) was  
96 predicted sufficient. All combinations of properties are presented in Supplementary Figures 1-  
97 2. When highly immune evading, Omicron’s chance to dominate would even slightly increase  
98 with future expanded vaccination, as vaccines provide a high level of protection against Delta  
99 variant infection (17), consequently increasing the relative susceptibility of the population to  
100 Omicron infection.

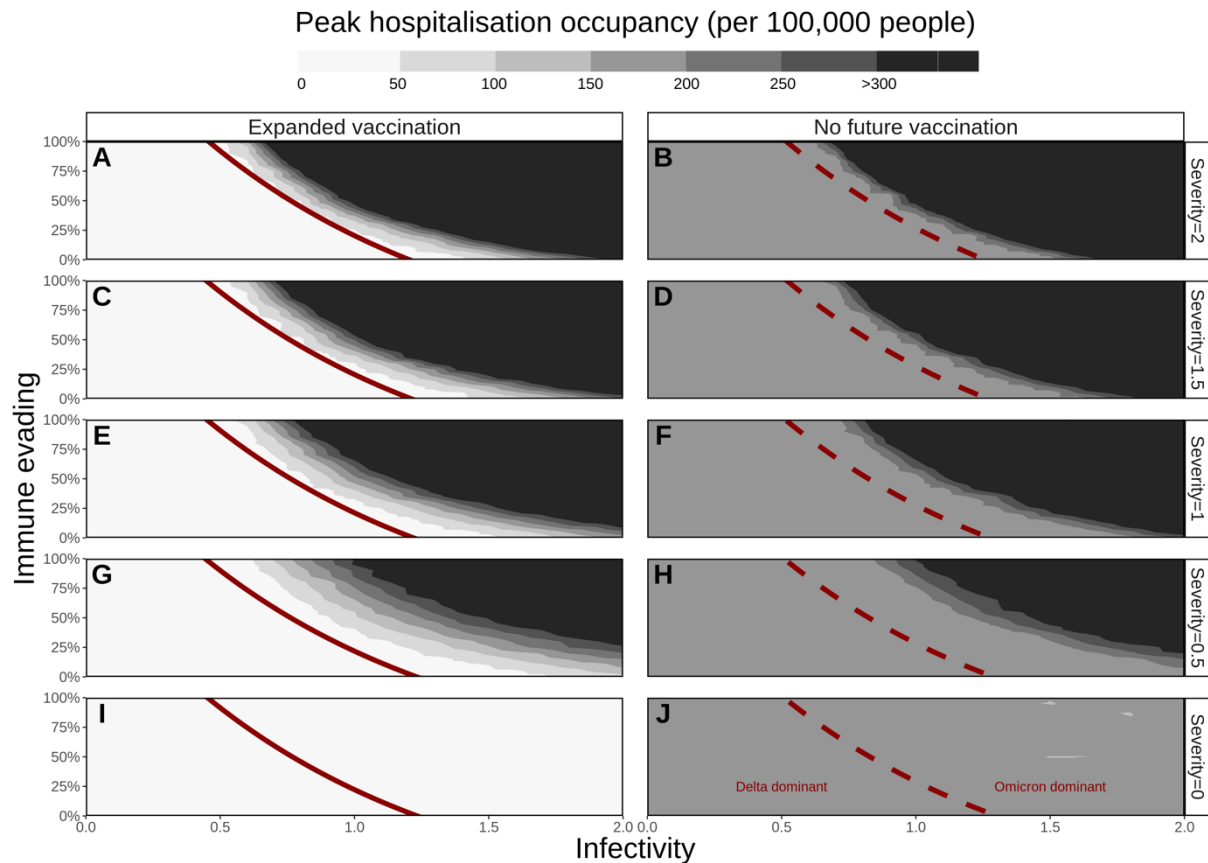
### 101 **Disease burden**

102 If Omicron or any other new VOC would have been less infective than Delta (below 1), with  
103 no immune evading capacity, it would likely not become dominant and the public health impact  
104 due to its emergence would be negligible (Supplementary Figures 2 -3 and Supplementary  
105 Table 2). Assuming Omicron or any other new VOC would have had a partial immune evading  
106 capacity of 20% and be 20% more infectious than Delta, we predicted it would have taken  
107 approximately 4 months for it to become dominant. Although becoming the dominant variant,  
108 we predicted that these properties would lead to a relatively low increase in public health  
109 burden, particularly with expanded vaccination (as is illustrated by the white area to the right

110 of the red curve in the left panels of Fig. 1). However, in scenarios where Omicron, or any other  
111 new variant, would have had higher levels of immune evasion capacity (50%), an increased  
112 infectivity of 50% , and be equally or more severe than Delta, dominance would occur within  
113 5 weeks, resulting in a higher projected public health burden.

#### 114 **Projected impact on peak hospital occupancy**

115 Expanded vaccination was predicted to be sufficient to prevent high hospital occupancy (dark  
116 grey/black area of Fig. 1, capped at 300 hospital beds per 100,000 people) for settings in which  
117 Delta would remain dominant. (18) For a highly infectious (infectivity factor  $>1.5$ ) but non-  
118 immune-evading variant, we predicted that expanded vaccination would be sufficient to prevent  
119 high hospital occupancy, however this probability diminished with increasing severity.  
120 Moreover, we explored a range of infectivity and immune evading properties for which  
121 Omicron would become dominant, but was not expected to lead to high peak hospital  
122 occupancy under the assumption of expanded vaccination (white area on the right side of the  
123 red curve in Fig. 1 and dotted area in Fig. 3). Similarly, this range diminished with increasing  
124 severity. For a variant with infectivity and severity similar to Delta, we predicted that expanded  
125 vaccination would be insufficient to prevent high peak hospital occupancy for an immune  
126 evading property above 75%. For properties that are predicted to lead to high hospital  
127 occupancy, settings would benefit from additional measures such as physical distancing, or new  
128 treatments and next generation vaccines as they become available.



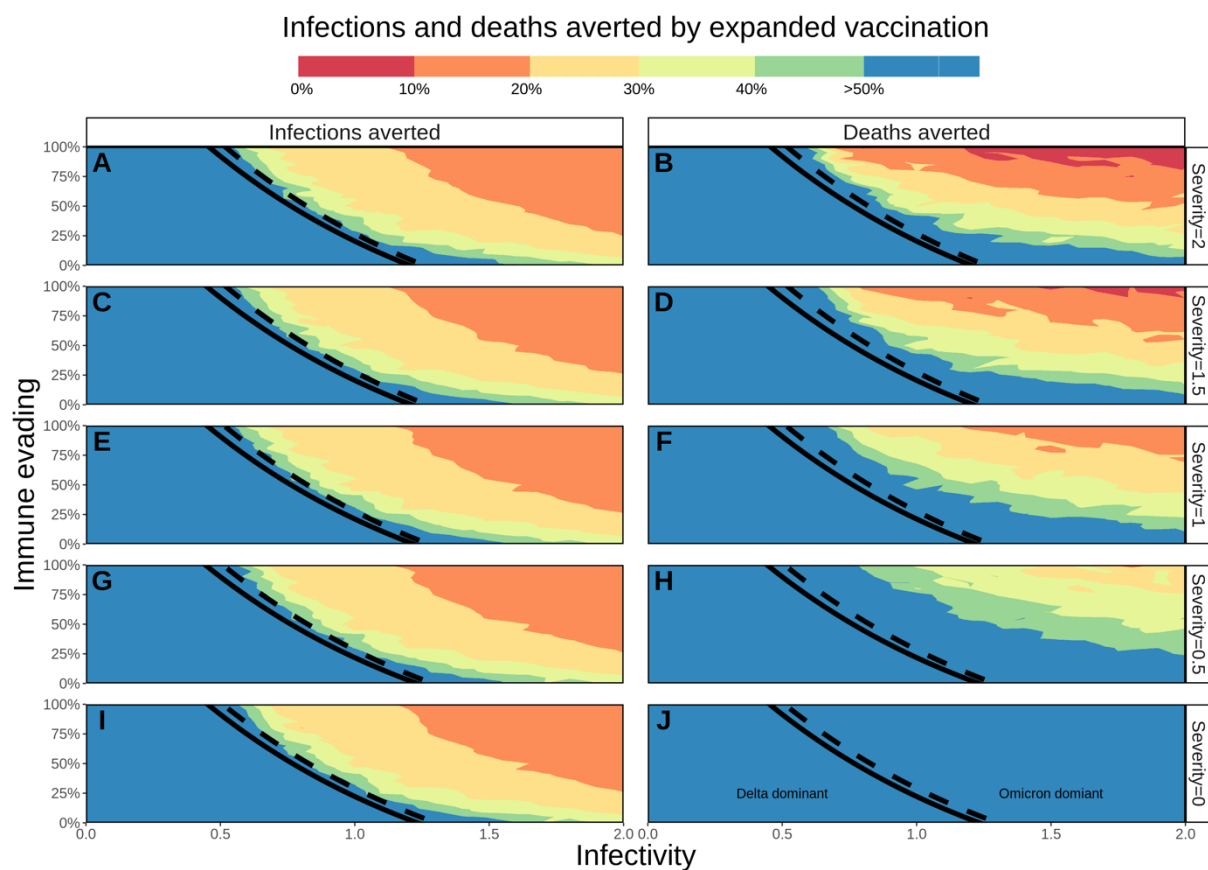
129

130 **Fig. 1: Peak daily hospital occupancy (number of beds per 100,000 population over the six-month**  
 131 **simulation period) for a range of variant properties.** The threshold (50% prevalence, see  
 132 Supplementary Figure 3) for Omicron’s dominance is presented by red lines (solid for expanded  
 133 vaccination, dashed for no future vaccination). Expanded vaccination includes third-doses for adults  
 134 (six-months after second-dose) and vaccinating 5-11-year-olds. Rows represent Omicron’s potential  
 135 severity (0 to 2) relative to Delta (1). Horizontal axes represent the range of Omicron’s potential  
 136 infectivity (0 to 2) relative to Delta (1), left vertical axes Omicron’s potential immune evading capacity  
 137 (0 to 100%). The peak hospital occupancy per 100,000 people has been capped at 300 per 100,000, a  
 138 value that ranges for European countries between 220 (Sweden) and 800 (Germany). (18)

139 **Impact on COVID-19 infections and deaths**

140 Omicron’s potential range of severity levels was found to have negligible influence on new  
 141 infections; however, it would heavily influence future mortality (in the absence of additional  
 142 measures that would likely be implemented before such high mortalities (and hospital  
 143 occupancy) would be reached, (Supplementary Figures 4 and 5). Fig. 2 presents the percentage

144 of infections and deaths averted through expanded vaccinations for all specified combinations  
145 of properties. The highest public health burden in terms of infections and deaths (top right  
146 corner of Supplementary Figures 4 and 5), would be least likely to be reduced by expanded  
147 vaccination (top right of panels in Fig. 2), because of highly immune evading capacity.  
148 However, with Omicron becoming the dominant variant, expanded vaccination was predicted  
149 to have an impact on deaths for combinations of properties where severity was lower than Delta  
150 (for severity of 0.5 and 0.0 (Fig. 2). The benefit of expanding vaccination will also be seen for  
151 scenarios where Delta remains dominant (area to the left of the black lines in Fig. 2).

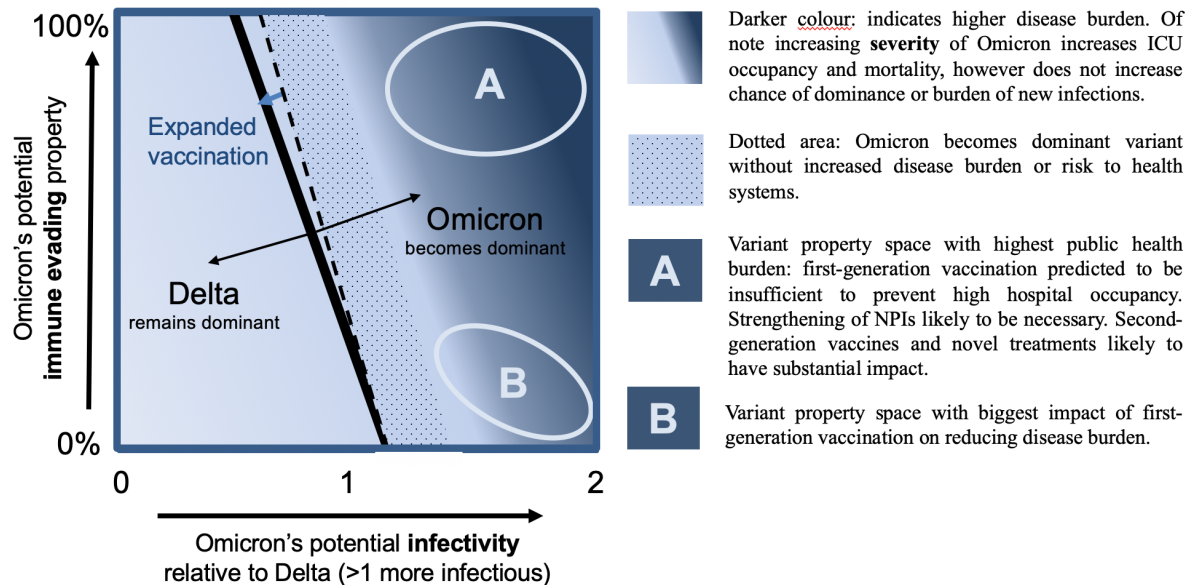


152  
153 **Fig. 2: Percentage of COVID-19 infections and deaths averted by third-dose vaccines for adults**  
154 **and vaccinating 5-11-year-olds with doses one and two.** The threshold (50% prevalence) for  
155 Omicron's future dominance within 6 months is presented by black lines (solid line for expanded  
156 vaccination, dashed for no future vaccination). Left panels represent the percentage infections averted,  
157 right panels the percentage of deaths averted due to expanded vaccination, with colour representing %



158 averted. Rows represent Omicron’s potential severity (0 to 2) relative to Delta (1), horizontal axes  
 159 Omicron’s potential infectivity (0 to 2) relative to Delta (1) and left vertical axes Omicron’s potential  
 160 immune evading capacity (0 to 100%). Maximum percentage of burden averted is capped at 50%, with  
 161 blue area extending to values >50%.

162



163

164 **Fig. 3: Schematic illustrating a summary of the interplay between potential infectivity,**  
 165 **immune evasion of Omicron or other variant of concern on its chances of becoming**  
 166 **dominant and increasing public health burden.**

167 To aid interpretation of Omicron’s properties on its chance of becoming dominant and the  
 168 associated overall impact on public health burden in a vaccinated population, we summarised  
 169 our findings in a schematic (Fig. 3). The darkness of colour in the heat map indicates the level  
 170 of disease burden (infections and deaths) and risk to health systems (hospital occupancy) at the  
 171 corresponding level of relative infectivity and immune evasion. The dashed line indicates when  
 172 Omicron would become the dominant variant without future vaccinations, the solid line when  
 173 it would become dominant with expanded vaccination. The dotted area indicates when Omicron  
 174 would become dominant without increased disease burden or risk to health systems. Area A

175 indicates variant property space where expanded vaccination alone will not prevent increased  
176 transmission and would lead to increased infections, hospital occupancy, and deaths. Additional  
177 measures would be needed in the case of very high immune evading variant including second-  
178 generation vaccines and/or novel treatment once available, or strengthened NPIs in their  
179 absence. Area B indicates space where expanded vaccination with first-generation vaccines will  
180 have the highest impact on reducing disease burden and health system risk. In case of low  
181 severity in area B, expanded vaccinations may be sufficient for control.

## 182 **Discussion**

183 Using our OpenCOVID individual-based transmission model, we simulated the interplay of  
184 Omicron's potential combinations of infectivity, severity, and immune evasion properties. We  
185 first identified the threshold of Omicron becoming the dominant variant (over Delta), for which  
186 infectivity was found to be the main driver followed by immune evasion. Increased disease  
187 severity of Omicron was found to have limited effect on dominance, but when dominant, to  
188 allow for an increase in hospital occupancy and number of deaths. If Omicron has increased  
189 infectivity and severity to Delta, then expanding first-generation vaccination with a third-dose  
190 and vaccinating 5-11-year-olds could avert many cases and deaths. However, would Omicron  
191 be highly immune evading, first-generation vaccines would not suffice, and additional measures  
192 would be required to control transmission until vaccines are updated.

193 Besides additional preventive measures such as strengthened NPIs and second-generation  
194 vaccines, new treatments that have been approved in December 2021 can now additionally be  
195 implemented to reduce the public health burden. (19-25) Maximum hospital capacity will have  
196 to be considered as it differs between countries, ranging from 220 to 800 beds per 100,000-  
197 population capita in Europe. (18) In a worst-case scenario of highly immune evading and  
198 increased severity of Omicron, for many countries, our predictions reached or surpassed

199 maximum hospital capacity. However, very high occupancy rates are unlikely to be reached as  
200 countries would implement additional measures sooner.

201 Although our analysis focuses on hospital occupancy and mortality as a higher priority public  
202 health risk, even rising SARS-CoV-2 infections due to lower severity Omicron may lead to a  
203 substantial risk of increased long-COVID (26) and should not be neglected in response  
204 planning. Furthermore, as we considered expanding vaccination with third-doses, the global  
205 inequity of vaccine access, and the selective pressure and emergence of new variants in settings  
206 with low vaccination rates is a global health emergency that needs to be addressed (27).

207 Our transmission model is based on assumptions that influence its outcomes. In our model  
208 predictions, we identified that Omicron's potential severity had little effect on the number of  
209 new cases, also because no impact on viral load was assumed. Higher viral load in the model is  
210 associated with increased transmissibility. The two vaccination scenarios we present in this  
211 study, expanded vaccination (with a third-dose for those 12 years of age and older, and two-  
212 dose vaccines for children aged 5-11 years) and no future vaccination, are examples of two  
213 extreme scenarios. The reality will lie in between and will be region dependent. Waning  
214 immunity is assumed to reduce linearly to zero in approximately one year. However, should  
215 immunity wane much slower, then the population would be protected for a longer period against  
216 either Delta (or a new non-immune evading variant), and our outcomes would prove too  
217 pessimistic. Our outcomes would be too optimistic should immunity wane faster than assumed.  
218 A higher or lower value of 1.2 for the effective reproduction number at the start of the winter  
219 period, prior to introduction of Omicron, could have influenced peak hospital occupancy  
220 estimates, however the relative impact of vaccination is not sensitive to this parameter.

221 With Omicron being more infectious, less severe, and slightly immune evading relative to  
222 Delta, our model predicted that Omicron would indeed quickly become the dominant variant  
223 (within 1-4 months, depending on its exact combination of viral property values), leading to a

224 peak in cases and hospitalisations (up to 50 hospital beds per 100,000 people with expanded  
225 vaccinations). For these scenarios we predicted that the expanded vaccination would prevent  
226 >40% of hospitalisations. In European countries with an expanded vaccination rollout, the  
227 hospital occupancy peak during the Omicron outbreak ranged between 20 and 50 beds per  
228 100,000 population, echoing our simulations. (28)

229 SARS-Cov-2 mutations have been identified throughout the pandemic and new variants are  
230 likely to continue to emerge. Compared with the Alpha variant, Delta has severity ratios  
231 reported as 1.3- to 2.3-times higher for hospital admissions and deaths. (29) Both vaccine-  
232 acquired and naturally acquired immunity will not suffice to prevent infection or disease if a  
233 new variant is highly immune evading. Based on these predictions we stress that vaccines may  
234 need adjustment to respond to current or future viral mutations. We further advocate for  
235 continued genomic surveillance and see it crucial to quickly test and continue improving assays  
236 that elucidate immune evasion properties of a new VOC, to better understand the risk of  
237 increased infectivity, severity, and immune evasion.

## 238 **Conclusion**

239 As the properties of Omicron and any future SARS-CoV-2 VOC become known, our analyses  
240 elucidate interpretation of the variant's potential dominance and subsequent public health  
241 burden. Combined with VOC genomic (30) and population epidemiological surveillance (31),  
242 alongside antibody neutralisation testing (32) our findings provide crucial quantitative guidance  
243 to decision-makers at a critical time.

244

## 245 **References**

- 246 1. Organization WH. Classification of Omicron (B.1.1.529): SARS-CoV-2 Variant of Concern 2021  
247 [updated 26 November 2021. Available from: [https://www.who.int/news/item/26-11-2021-classification-of-omicron-\(b.1.1.529\)-sars-cov-2-variant-of-concern](https://www.who.int/news/item/26-11-2021-classification-of-omicron-(b.1.1.529)-sars-cov-2-variant-of-concern).
- 248 2. Organization WH. Update on Omicron 2021 [Available from: <https://www.who.int/news/item/28-11-2021-update-on-omicron>.
- 249 3. Burioni R, Topol EJ. Has SARS-CoV-2 reached peak fitness? Nature Medicine. 2021;27(8):1323-4.
- 250 4. Iftekhar EN, Priesemann V, Balling R, Bauer S, Beutels P, Calero Valdez A, et al. A look into the future  
251 of the COVID-19 pandemic in Europe: an expert consultation. The Lancet Regional Health – Europe. 2021;8.
- 252
- 253

- 254 5. Commission E. Safe COVID-19 vaccines for Europeans 2021 [Available from:  
255 [https://ec.europa.eu/info/live-work-travel-eu/coronavirus-response/safe-covid-19-vaccines-europeans\\_en](https://ec.europa.eu/info/live-work-travel-eu/coronavirus-response/safe-covid-19-vaccines-europeans_en).  
256 6. Control ECfDPa. SARS-CoV-2 variants of concern as of 3 December 2021 2021 [Available from:  
257 <https://www.ecdc.europa.eu/en/covid-19/variants-concern>.  
258 7. Dyer O. Covid-19: South Africa's surge in cases deepens alarm over omicron variant. 2021;375:n3013.  
259 8. Chen J, Wang R, Benovich Gilby N, Wei G-W. Omicron (B.1.1.529): Infectivity, vaccine breakthrough,  
260 and antibody resistance. arXiv e-prints. 2021;arXiv:2112.01318.  
261 9. (ECDC) ECoDC. Variants of interest and concern in the EU/EEA 2019 [Available from:  
262 <https://gis.ecdc.europa.eu/portal/apps/opsdashboard/index.html#/25b6e879c076412aaa9ae7adb78d3241>.  
263 10. Katikireddi SV, Cerqueira-Silva T, Vasileiou E, Robertson C, Amele S, Pan J, et al. Two-dose ChAdOx1  
264 nCoV-19 vaccine protection against COVID-19 hospital admissions and deaths over time: a retrospective,  
265 population-based cohort study in Scotland and Brazil. (1474-547X (Electronic)).  
266 11. Sharma M, Mindermann S, Rogers-Smith C, Leech G, Snodin B, Ahuja J, et al. Understanding the  
267 effectiveness of government interventions against the resurgence of COVID-19 in Europe. Nature  
268 Communications. 2021;12(1):5820.  
269 12. Kerr CC, Stuart RM, Mistry D, Abeysuriya RG, Rosenfeld K, Hart GR, et al. Covasim: An agent-based  
270 model of COVID-19 dynamics and interventions. PLOS Computational Biology. 2021;17(7):e1009149.  
271 13. Hinch R, Probert WJM, Nurtay A, Kendall M, Wymant C, Hall M, et al. OpenABM-Covid19—An agent-  
272 based model for non-pharmaceutical interventions against COVID-19 including contact tracing. PLOS  
273 Computational Biology. 2021;17(7):e1009146.  
274 14. Sonabend R, Whittles LK, Imai N, Perez-Guzman PN, Knock ES, Rawson T, et al. Non-pharmaceutical  
275 interventions, vaccination, and the SARS-CoV-2 delta variant in England: a mathematical modelling study. The  
276 Lancet. 2021;398(10313):1825-35.  
277 15. Shattock AJ, Le Rutte EA, Dünner RP, Sen S, Kelly SL, Chitnis N, et al. Impact of vaccination and non-  
278 pharmaceutical interventions on SARS-CoV-2 dynamics in Switzerland. medRxiv. 2021:2021.04.14.21255503.  
279 16. Czyzewski A. Modelling an unprecedented pandemic: The vital role of team-based, collaborative  
280 epidemiology and disease modelling in managing pandemics [Available from:  
281 <https://www.imperial.ac.uk/stories/coronavirus-modelling/>.  
282 17. Pouwels KB, Pritchard E, Matthews PC, Stoesser N, Eyre DW, Vihta K-D, et al. Effect of Delta variant  
283 on viral burden and vaccine effectiveness against new SARS-CoV-2 infections in the UK. Nature Medicine. 2021.  
284 18. (OECD) OIEC-oad. Hospital beds, 2000, 2017 (or nearest year) Paris: OECD Publishing; 2019  
285 [Available from: <https://doi.org/10.1787/b5fdb5fe-en>.  
286 19. COVID-19: EMA recommends authorisation of antibody medicine Xevudy [press release]. 16 December  
287 2021 2021.  
288 20. MHRA approves Xevudy (sotrovimab) a COVID-19 treatment found to cut hospitalisation and death by  
289 79% [press release]. 2 December 2021 2021.  
290 21. Oral COVID-19 antiviral, Paxlovid, approved by UK regulator [press release]. 31 December 2021 2021.  
291 22. EMA issues advice on use of Paxlovid (PF-07321332 and ritonavir) for the treatment of COVID-19:  
292 rolling review starts in parallel [press release]. 16 December 2021 2021.  
293 23. Coronavirus (COVID-19) Update: FDA Authorizes First Oral Antiviral for Treatment of COVID-19  
294 [press release]. 22 December 2021 2021.  
295 24. Coronavirus (COVID-19) Update: FDA Authorizes Additional Oral Antiviral for Treatment of COVID-  
296 19 in Certain Adults [press release]. 23 December 2021 2021.  
297 25. First oral antiviral for COVID-19, Lagevrio (molnupiravir), approved by MHRA [press release]. 4  
298 November 2021 2021.  
299 26. Sudre CH, Murray B, Varsavsky T, Graham MS, Penfold RS, Bowyer RC, et al. Attributes and predictors  
300 of long COVID. Nature Medicine. 2021;27(4):626-31.  
301 27. Organization WH. Vaccine Equity 2021 [Available from: [https://www.who.int/campaigns/vaccine-](https://www.who.int/campaigns/vaccine-equity)  
302 [equity](https://www.who.int/campaigns/vaccine-equity).  
303 28. ECDC. Data on hospital and ICU admission rates and current occupancy for COVID-19 2022 [cited 2022  
304 15/03/2022]. Available from: [https://www.ecdc.europa.eu/en/publications-data/download-data-hospital-and-icu-](https://www.ecdc.europa.eu/en/publications-data/download-data-hospital-and-icu-admission-rates-and-current-occupancy-covid-19)  
305 [admission-rates-and-current-occupancy-covid-19](https://www.ecdc.europa.eu/en/publications-data/download-data-hospital-and-icu-admission-rates-and-current-occupancy-covid-19).  
306 29. Fisman DN, Tuite AR. Progressive Increase in Virulence of Novel SARS-CoV-2 Variants in Ontario,  
307 Canada. medRxiv. 2021:2021.07.05.21260050.  
308 30. Robishaw JD, Alter SM, Solano JJ, Shih RD, DeMets DL, Maki DG, et al. Genomic surveillance to  
309 combat COVID-19: challenges and opportunities. The Lancet Microbe. 2021;2(9):e481-e4.  
310 31. Torjesen I. Covid-19: Omicron may be more transmissible than other variants and partly resistant to  
311 existing vaccines, scientists fear. BMJ. 2021;375:n2943.  
312 32. News N. Omicron likely to weaken COVID vaccine protection 2021 [updated 08 December 2021.  
313 Available from: <https://www.nature.com/articles/d41586-021-03672-3>.  
314

## 315 **Methods**

### 316 **OpenCOVID individual-based model**

317 OpenCOVID is a stochastic, discrete-time, individual-based transmission model of SARS-  
318 CoV-2 infection and COVID-19 disease (15). The model simulates viral transmission between  
319 infectious and susceptible individuals that come in contact through an age-structured, small-  
320 world network. The probability of transmission in each exposure is influenced by the  
321 infectiousness of the infected individual, the immunity of the susceptible individual (acquired  
322 through previous infection and/or vaccination), and a background seasonality pattern (reflecting  
323 a larger proportion of contacts being in closer contact indoors with cooler temperatures).  
324 Infectiousness is a function of viral variant infectivity and time since infection (which follows  
325 a gamma distribution peaking approximately at the time of symptom onset). Once infected, a  
326 latency period is followed by a pre-symptomatic stage, after which the individual can  
327 experience asymptomatic, mild, or severe infection. Severe cases can lead to hospitalisation,  
328 ICU admission, and ultimately death. Recovery after infection leads to development of  
329 immunity. This immunity is assumed to wane over time and can be further reduced if exposed  
330 to a novel variant with immune evading properties (Supplementary Table 2 for further details).  
331 The model has the capacity to represent a number of containment measures, including non-  
332 pharmaceutical interventions such as social distancing and facemask usage, testing strategies  
333 such as test-diagnose isolate, mass-testing, and contact tracing, and also pharmaceutical  
334 interventions such as vaccination and treatment.

335 Detailed model descriptions and model equations are described in. (15) Open access source-  
336 code for the OpenCOVID model is publicly available at  
337 (<https://github.com/SwissTPH/OpenCOVID>).

## 338 **Vaccination**

339 In this analysis, we simulate the impact of mRNA vaccines Pfizer/BioNTech and Moderna,  
340 which together make up 78% of the total number of doses secured in Europe. (5) Fully  
341 susceptible, partially susceptible, and infected individuals not in hospital are considered eligible  
342 to receive a vaccine. Vaccines have a two-fold effect; first, they provide protection against new  
343 infection through development of immunity (90% reduced susceptibility). Secondly, once  
344 infected, vaccines reduce the probability of developing severe symptoms, leading to a 95%  
345 reduction in severe disease, impacting hospitalisations, ICU admissions, and deaths. We assume  
346 vaccination does not impact the probability of onward transmission once the individual is  
347 infected. Details regarding targeted vaccination groups and assumed durations between doses  
348 and vaccine efficacies are described in the Supplementary Information 2.2-2.3. Associated  
349 waning immunity profiles after infection and vaccination are described in Supplementary  
350 Information 2.3 and 2.4.

## 351 **Variant properties**

352 Delta (B.1.617.2) is assumed to be the dominant transmission variant at the time of Omicron  
353 (B.1.1.529) emergence. A full factorial range of Omicron properties were considered:1)  
354 infectivity (transmission multiplication factor per exposure relative to Delta), ranging from 0 to  
355 2, 2) disease severity (multiplication factor per infection, relative to Delta ranging from 0 to 2),  
356 and 3) immune evasion capacity from 0-100%. In the model, once infected with the new variant,  
357 severity influences the chance to manifest severe symptoms, rather than mild or no symptoms.  
358 One hundred percent immune evasion means fully evading any previously naturally or  
359 vaccination-acquired immunity, making an individual fully susceptible to infection with a new  
360 variant. The immune evasion property is assumed to only relate to the individual's previously  
361 acquired immunity (their susceptibility), thus only impacting the rate of new infections and not  
362 to influence their severity of infection once infected. Full model details on the variant properties

363 are described in Supplementary Information 2.5 alongside probabilities of immunologically  
364 naïve infected individuals developing severe disease in Supplementary Table 3.

### 365 **Model initialisation**

366 All model simulations were designed to be pseudo-representative of a European setting at the  
367 beginning of December 2021. We assume 30% of the population have been previously infected  
368 with SARS-CoV-2 over a 630 day period (representing epidemic outbreak in Europe in March  
369 2020). We assume the effective reproduction number ( $R_e(\tau)$ ) on 1 December 2021, is equal to  
370 1.2. This represents an average scenario of increasing case numbers across Europe at the start  
371 of the winter period prior to the emergence of Omicron. This level of  $R_e(\tau)$  is lower than levels  
372 in some European countries with strongly increasing cases as of early December, however also  
373 higher than those that implemented strong NPI before 1<sup>st</sup> December. The average number of  
374 daily contacts required to achieve an  $R_e(\tau)$  of 1.2 inherently considers any non-pharmaceutical  
375 interventions in place at the beginning of the winter period in Europe prior to the emergence of  
376 Omicron. Seasonality is assumed to follow a cosine function, with a peak in seasonal infectivity  
377 occurring 6 weeks from model initialisation (representing mid-winter see Supplementary  
378 Information Figure 6).

### 379 **Analyses**

380 For the full range of variant properties specified, we simulated two vaccination scenarios from  
381 the introduction of the new variant to six months into the future. For the first scenario, no future  
382 vaccinations are implemented. The second scenario is identical up to 1 December 2021, but  
383 simulates expanded vaccination with first-generation vaccines administering as third-doses in  
384 adults (six months after second-dose) and scale up of first- and second-dose in 5-17 year-olds.  
385 Each simulation provided the relative prevalence of Omicron over the next 6 months compared  
386 with Delta, as well as daily and cumulative numbers of new SARS-CoV-2 infections, maximum  
387 hospital occupancy, and COVID-19-related deaths. To reflect the element of chance that



388 naturally occurs in transmission dynamics, 10 random stochastic simulations were performed  
389 per scenario for which we present the mean. In this analysis we do not explore the effect of  
390 varying NPI intensity over time. As such, our analysis reflects predicted disease dynamics and  
391 public health burden in the absence of strong NPIs, such as lockdowns.

#### 392 **Data availability statement**

393 Data sharing is not applicable to this article as no datasets were generated or analysed during  
394 the study. Data informing model parameters are described in Shattock *et al.* (15)

#### 395 **Code availability statement**

396 All model code and Figure code are open access and publicly available at  
397 (<https://github.com/SwissTPH/OpenCOVID>). For this paper model code and Figure code are  
398 version 2.0 of OpenCovid (at final submission a zendo DOI will be provided for the code and  
399 model generated data behind all figures).

#### 400 **Acknowledgements**

401 The authors want to acknowledge and thank the members of the Disease Modelling Unit, Swiss  
402 Tropical and Public Health Institute. Calculations were performed at sciCORE  
403 (<http://scicore.unibas.ch/>) scientific computing core facility at University of Basel

#### 404 **Author contributions**

405 EALR and AJS conceived the study, performed the analyses, prepared figures, and conducted  
406 model and analysis validation. AJS further developed the model with input from EALR, SLK,  
407 and MAP. All authors contributed to interpretation of the results, writing the draft, and final  
408 version of the manuscript, and gave final approval for publication.

#### 409 **Competing interests**

410 The authors declare no competing interests.

411

412 **Funding**

413 Funding for the study was provided by the Botnar Research Centre for Child Health (to MAP)

414 and the Swiss National Science Foundation Professorship of MAP (PP00P3\_170702).

415

## **Supplementary Information:**

### **The potential impact of Omicron and future variants of concern on SARS-CoV-2 transmission dynamics and public health burden: a modelling study**

Epke A Le Rutte PhD\*<sup>a,b</sup>, Andrew J Shattock PhD\*<sup>a,b</sup>, Nakul Chitnis PhD<sup>a,b</sup>, Sherrie L Kelly PhD<sup>a,b</sup>, Melissa A Penny PhD<sup>a,b</sup>

<sup>a</sup> Swiss Tropical and Public Health Institute, Basel, Switzerland

<sup>b</sup> University of Basel, Basel, Switzerland

\* These authors contributed equally to this work

Correspondence to Prof Melissa A Penny

**[melissa.penny@unibas.ch](mailto:melissa.penny@unibas.ch)**

## 1. Supplementary Figures 1-6 and Tables 1-3

**Supplementary Table 1. Overview of two vaccination scenarios.** No future vaccination, and expanded vaccination through third-dose in adults (six months after second-dose) and scale up in 5-17 year-olds with first-generation vaccines. Additional details are provided in section 2.3.

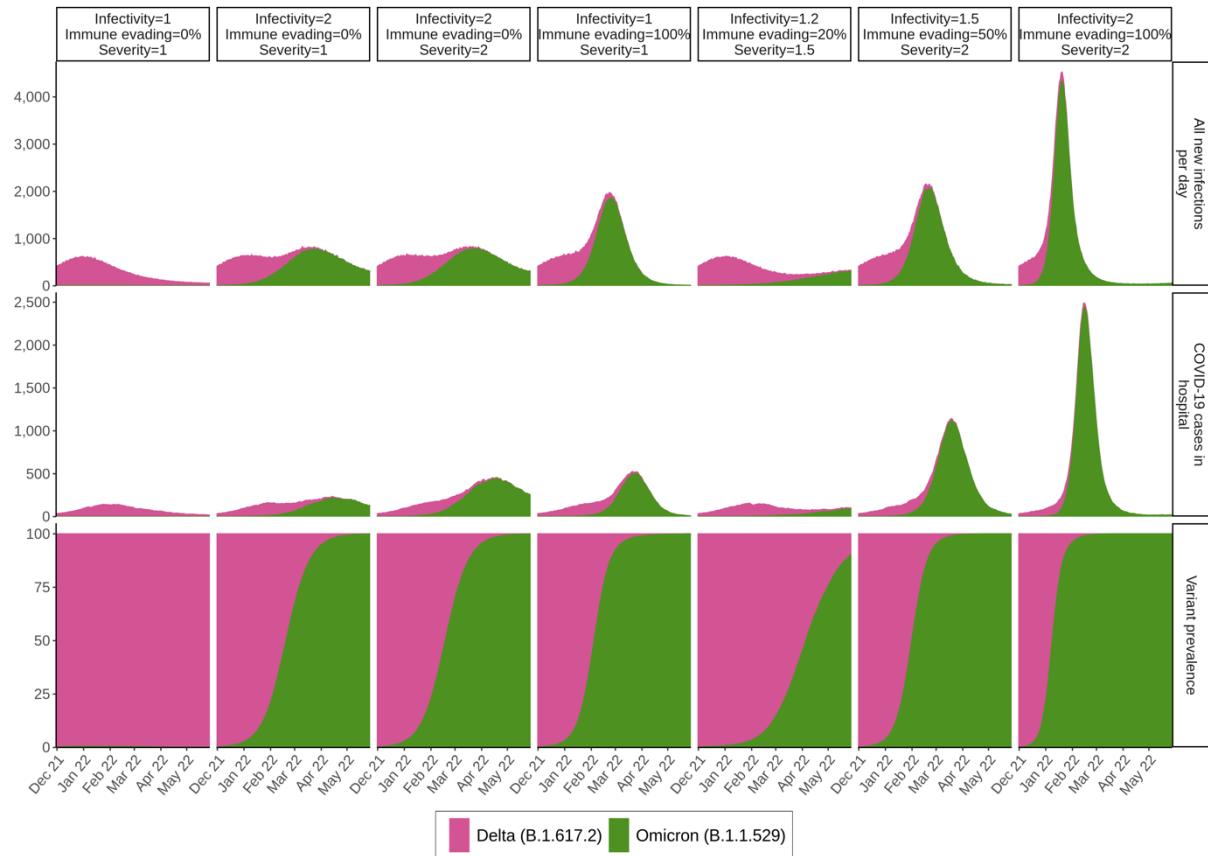
Group	As of 1 December 2021	No future vaccination	Expanded vaccination
<b>65+ or comorbidities</b>	90% coverage	90% coverage	90% coverage of third dose* 180 days after second dose
<b>Adults 18-64</b>	70% coverage	70% coverage	70% coverage of third dose* 180 days after second dose
<b>Adolescents 12-17</b>	50% coverage	50% coverage	Scale up to 70% coverage within 2 months
<b>Children 5-11</b>	0% coverage	0% coverage	Scale up to 50% coverage within 4 months
<b>Total number of doses in future</b>		zero	16,000 per 100,000 people over six-months

\*5% dropout included between those receiving second and third-dose (95% acceptance rate for third dose for these with two doses)

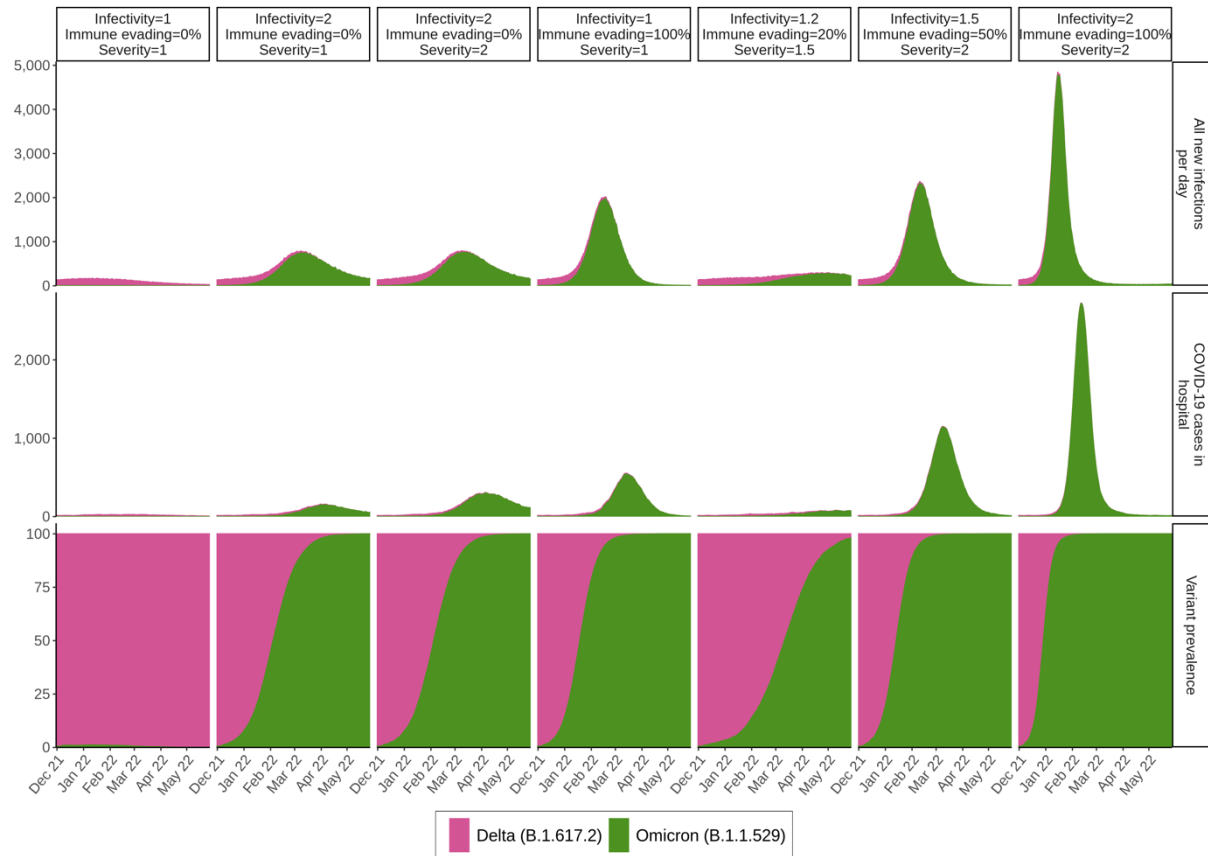
**Supplementary Table 2. Summary of seven combinations of Omicron's or any future variant of concern's potential properties including infectivity, severity, and immune evasion.** Probability of the new variant to become the dominant variant, associated public health burden, and the effect of expanded vaccination through third-dose in adults (six months after second-dose) and scale up in 5-17 year-olds with first-generation vaccines.

Simulation	Infectivity (relative to Delta)	Severity (relative to Delta)	Immune evasion	Probability of Omicron dominance	Public health impact	Expanded vaccination* effect
<b>1</b>	1	1	0%	Low	Negligible	High
<b>2</b>	2	1	0%	Very high	High	High
<b>3</b>	2	2	0%	Very high	High	Very high
<b>4</b>	1	1	100%	Very high	High	Moderate
<b>5</b>	1.2	2	20%	High	Low	Moderate
<b>6</b>	1.5	2	50%	Very high	High	Low
<b>7</b>	2	2	100%	Very high	Very high	Negligible

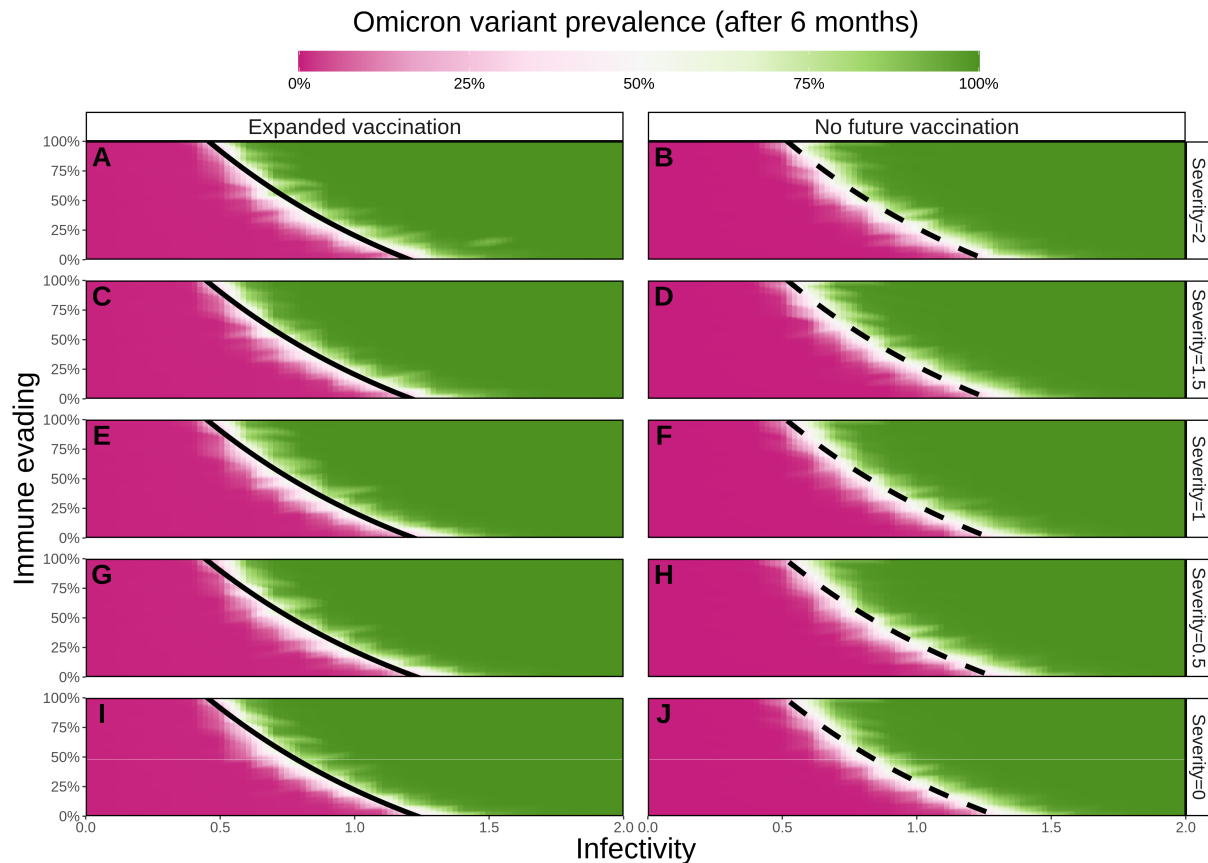
\* Expanded vaccination through third-dose in adults and vaccinating 5-17 year-olds with first-generation vaccines



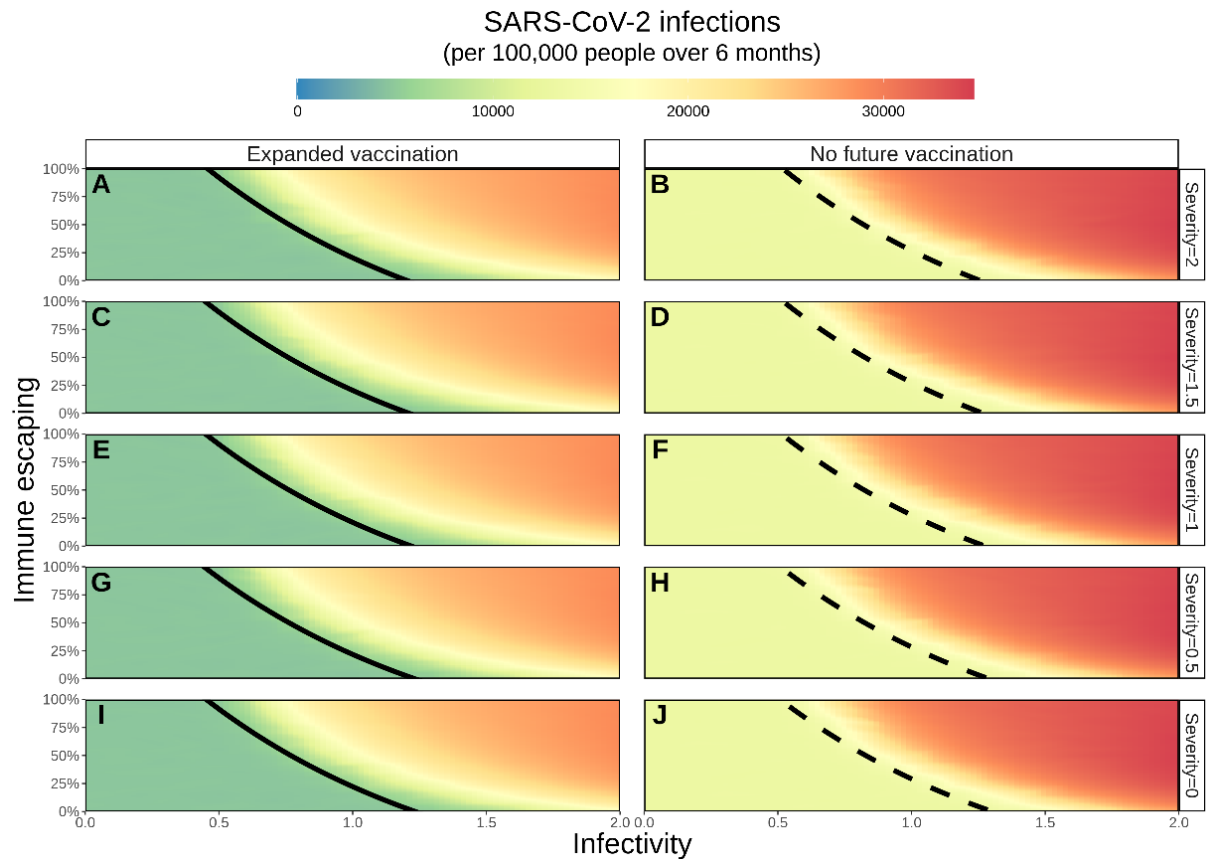
**Supplementary Figure 1. Temporal epidemiological trends for seven combinations of the new variant's potential properties under no future vaccination.** Public health burden is represented by COVID-19 infections and hospital occupancy per 100,000 population per day. Variant prevalence percentage over time is presented in the bottom row.



**Supplementary Figure 2. Temporal epidemiological trends for seven different combinations of Omicron’s potential properties under expanded vaccination.** This figure represents a setting with future expanded vaccination through third-dose in adults (six months after second-dose) and scale up in 5-11 year-olds with first-generation vaccines. Public health burden is represented by COVID-19 infections and hospital occupancy per 100,000 population per day. Variant prevalence percentage over time is presented in the bottom row.

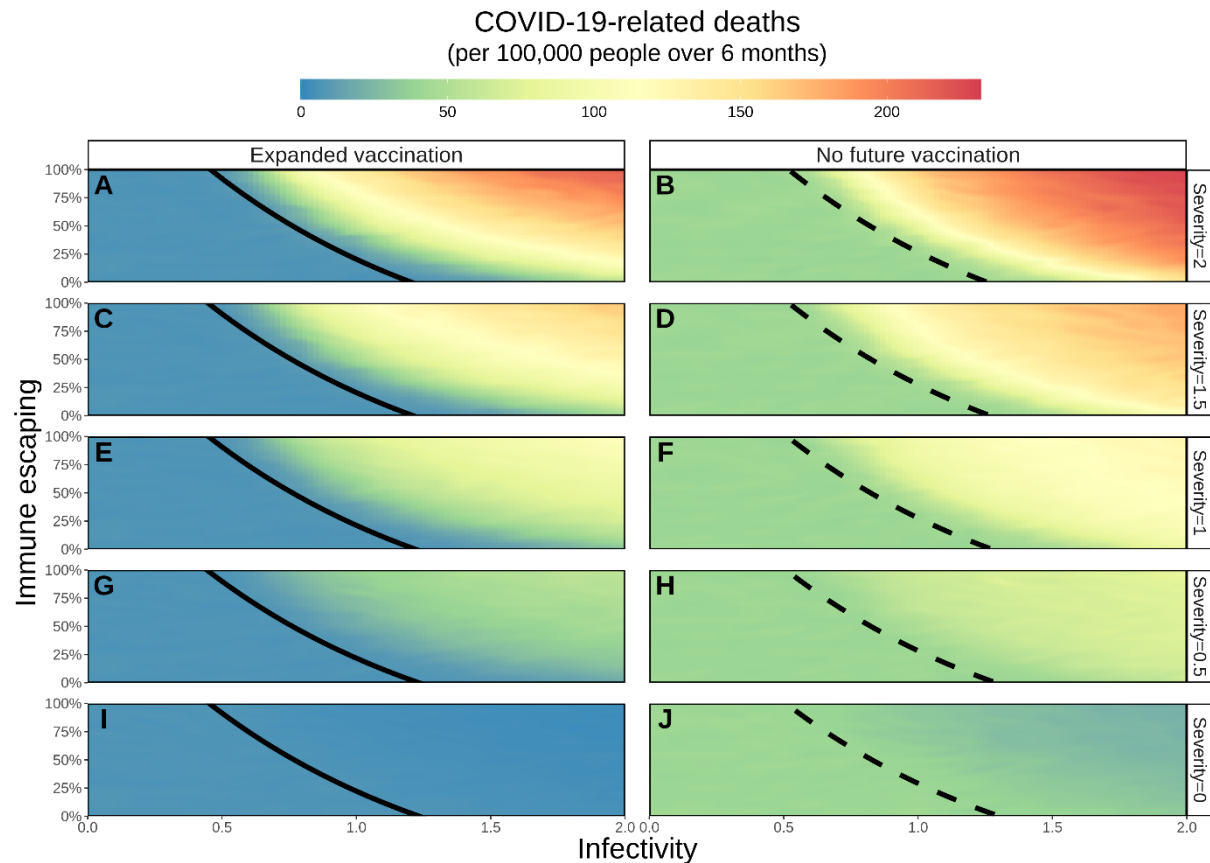


**Supplementary Figure 3. The projected prevalence of the new variant under combinations of infectivity, immune evasion capacity, and severity after six months.** Black line represents the threshold (50%) for the new variant to become dominant (areas to the right of the lines). Left column represents a setting with expanded vaccination through third-dose in adults (six months after second-dose) and scale up in 5-17 year-olds with first-generation vaccines. Right column represents a setting with no future vaccination. Horizontal axes represent the range of the new variant's potential infectivity (0 to 2) relative to Delta (1). Vertical axes represent the range of the new variant's potential immune evasion capacity (0 to 100%). Rows represent five levels of the new variant's potential severity (0 to 2) relative to Delta (1).

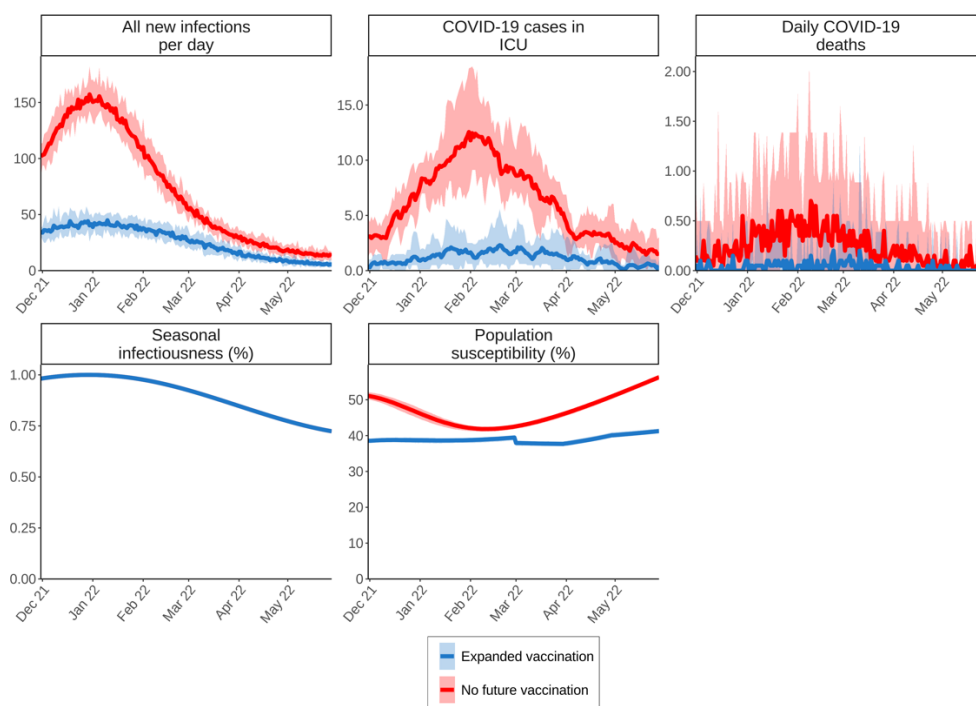


**Supplementary Figure 4. Cumulative number of SARS-CoV-2 infections (per 100,000 population over the six-month simulation period) for a wide range of variant properties.** Solid and dashed black lines represent the threshold (50%) for the new variant to become dominant (area to the right of the black line). Left panels represent a setting with expanded vaccination with first-generation vaccines through third-dose in adults (six months after second-dose) and scale up in 5-17 year-olds, right panels, a setting with no future vaccination. Horizontal axes represent the range of the new variant's potential infectivity (0 to 2) relative to Delta (1). Left vertical axes represent the range of the new variant's potential immune evasion capacity (0 to 100%). Rows represent five levels of the new variant's potential severity (0 to 2) relative to Delta (1).





**Supplementary Figure 5. Cumulative number of COVID-19-related deaths (per 100,000 population over the six-month simulation period) for a wide range of variant properties.** Solid and dashed black lines represent the threshold (50%) for the new variant to become dominant (area to the right of the black line). Left panels represent a setting with expanded vaccination through third-dose in adults (six months after second-dose) and scale up in 5-17 year-olds using first-generation vaccines, right panels, a setting with no future vaccination. Horizontal axes represent the range of the new variant's potential infectivity (0 to 2) relative to Delta (1). Left vertical axes represent the range of the new variant's potential immune evasion capacity (0 to 100%). Rows represent five levels of the new variant's potential severity (0 to 2) relative to Delta (1).



**Supplementary Figure 6. Predicted temporal epidemiological trends for Delta in the absence of Omicron under no future vaccination and expanded vaccination, alongside seasonality profile.** Public health burden is represented by COVID-19 infections, ICU occupancy and COVID-19 related mortality per 100,000 population per day. Seasonal infectious and susceptible population over time is presented in the bottom row. Blue illustrates dynamics with expanded vaccination, and red with no future vaccination.

## 2. Supplementary methods

### 2.1 Model initialisation

All model simulations were designed to be pseudo-representative of a general Western European setting at the beginning of December 2021. We assume 30% of the population have been previously infected with SARS-CoV-2 over a 630 day period (representing epidemic outbreak in Europe in March 2020). The fraction that was both previously infected and vaccinated prior to the emergence of the Omicron variant was age-dependent and ranged from 3% in 10-20-year-olds to 30% in 80-90-year-olds (see section 2.2 for further details on vaccination rates prior to the Omicron's emergence). We assume the effective reproduction number on 1 December 2021 is equal to 1.2. This represents increasing case numbers across Europe at the start of the winter period, prior to the emergence of Omicron. The average number of daily contacts required to achieve an initial effective reproduction number of 1.2 inherently considers any non-pharmaceutical interventions in place at the beginning of the winter period in Europe prior to the emergence of Omicron. Seasonality is assumed to follow a cosine function, with a peak in seasonal infectivity occurring 6 weeks from model initialisation (representing mid-winter, Supplementary Figure 6).

### 2.2 Vaccine rollout

Four distinct risk groups are simulated for vaccination rollout; those 65 years of age and older or live with comorbidities (high-risk group), all other adults (18-64-year-olds), adolescents (12-17-year-olds), and children (5-11-years-olds). In our simulations, vaccinations start in the high-risk group in January 2021 reaching a 90% coverage rate on 1 December 2021. The 18-64-year-olds start vaccination on 1 May 2021, achieving 70% coverage on 1 December 2021.

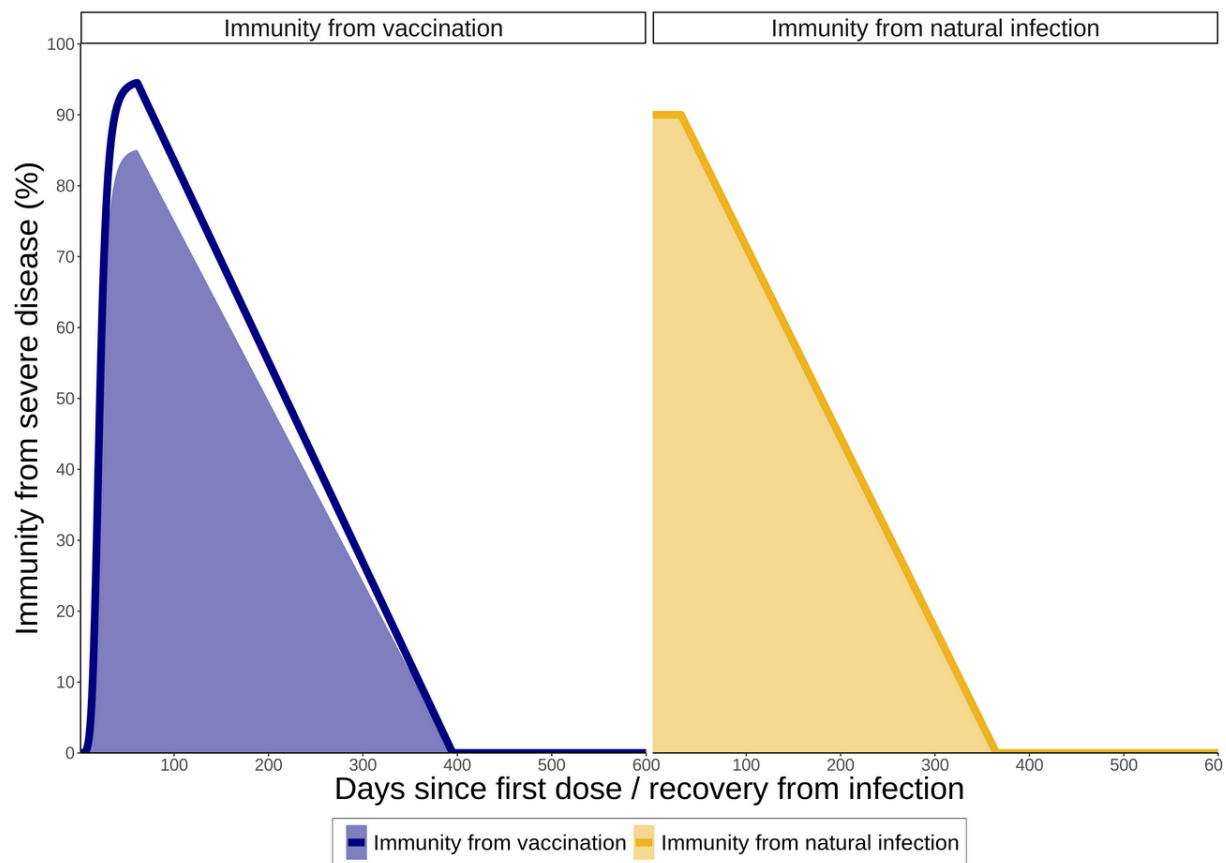
Adolescents 12-17 years of age started vaccinations on 1 October 2021 with a coverage of 50% achieved by 1 December 2021. Children 5-11 years of age start vaccinations of doses 1 and 2 on 1 December 2021 and are only included as part of the extended vaccination scenario. Vaccination groups, associated vaccination coverages as of 1 December 2021, and the simulated future scenarios are summarized in Supplementary Table 1.

### 2.3 Vaccine-induced immunity profile

We model an interval of 28 days between the first and second dose, and a maximum of 95% vaccine efficacy to be reached 14 days after the second dose (increasing with a sigmoidal curve). We assume that 90% of vaccination effect is transmission blocking (i.e. a 90% reduced probability to become infected after being exposed). We assume vaccinated individuals will always be administered two doses and assume that 95% of those vaccinated with doses one and two will accept a third-dose. Third-doses are administered 6 months after the second dose, after which the maximum vaccine efficacy of 95% is again reached 14 days after the last dose has been administered. One month after the last dose, immunity starts waning linearly to zero over 335 days<sup>1,2</sup>. The left panel of Supplementary Figure 7 provides a schematic overview of the waning immunity pattern after vaccination.

### 2.4 Infection-induced immunity profile

After recovering from infection with SARS-CoV-2, individuals develop naturally acquired immunity with a maximum level of 90% reduced susceptibility which they maintain for a month, after which their immunity wanes linearly to zero over a period of 335 days<sup>1,2</sup>. The level of immunity is the reverse of the susceptibility of the individual, which thus increases over time. The Delta variant is assumed not to be immune evading, therefore immunity following infection from Delta and Omicron provides a similar risk of infection when exposed to Delta. The right panel of Supplementary Figure 7 provides a schematic overview of the waning immunity pattern after natural infection.



**Supplementary Figure 7. Profiles for immunity acquired from a) vaccination, and b) natural infection. The shaded areas represent immunity from transmission when exposed to a variant without immune escaping properties. The solid line represents overall immunity to severe disease.**

### **2.5 Effect of variant properties and vaccination on prognosis**

The individual's prognosis depends on multiple factors including age, vaccine status, comorbidity, and variant severity. The probabilities of 1) a symptomatic case developing severe disease, 2) a severe case becoming critical, and 3) a critical case ultimately leading to death, are all defined as functions for the above-mentioned factors. For this study, we use probabilities reported in <sup>3</sup>, updated to represent the additional risk of hospitalisation from infection with VOC Delta (B.1.617.2) <sup>4-6</sup>. In addition to age-related risk, the probability that an infected individual will develop severe symptoms is also scaled by the severity factor of the viral variant exposed to.

In this study we use a severity factor of 1 for VOC Delta (B.1.617.2), and consider a range of potential relative severity factors for VOC Omicron (B.1.1.529) between 0 and 2. That is, a variant that has 0%-200% severity of Delta. For vaccinated individuals that become infected (noting that the transmission-blocking action of the vaccine reduces the probability of infection), the probability of developing severe disease is reduced by the severity or disease-blocking property of the vaccine. The level to which the probability of severe disease is reduced is dependent upon the level of immunity at the time of infection.

Vaccine-induced immunity is assumed to wane over time and can be further decreased if exposed to a variant with immune evading capacity. In this study, we consider the full range of potential immune evading properties of Omicron, from 0% to 100%. The probability that immunologically naïve (i.e., unvaccinated, and previously uninfected) individuals with no comorbidities infected with Delta (severity factor 1, 0% immune evading) develop severe disease are given in Supplementary Table 3.

**Supplementary Table S3. Probabilities that immunologically naïve (i.e., unvaccinated and previously uninfected) individuals with no comorbidities infected with Delta (severity factor 1, 0% immune evading) develop severe disease (source <sup>3-6</sup>)**

Age group	Severe disease (Delta, unvaccinated)
0-10	<1.0%
10-20	1.0%
20-30	1.2%
30-40	2.4%
40-50	3.9%
50-60	6.6%
60-70	16.3%
70-80	26.0%
80-90+	33.0%

### 3. References

- 1 Wheatley, A. K. *et al.* Evolution of immune responses to SARS-CoV-2 in mild-moderate COVID-19. *Nat Commun* **12**, 1162, doi:10.1038/s41467-021-21444-5 (2021).
- 2 Cohen, K. W. *et al.* Longitudinal analysis shows durable and broad immune memory after SARS-CoV-2 infection with persisting antibody responses and memory B and T cells. *Cell Rep Med* **2**, 100354, doi:10.1016/j.xcrm.2021.100354 (2021).
- 3 Shattock, A. J. *et al.* Impact of vaccination and non-pharmaceutical interventions on SARS-CoV-2 dynamics in Switzerland. *medRxiv*, 2021.2004.2014.21255503, doi:10.1101/2021.04.14.21255503 (2021).
- 4 Twohig, K. A. *et al.* Hospital admission and emergency care attendance risk for SARS-CoV-2 delta (B.1.617.2) compared with alpha (B.1.1.7) variants of concern: a cohort study. *Lancet Infect Dis*, doi:10.1016/s1473-3099(21)00475-8 (2021).
- 5 Sheikh, A., McMenamin, J., Taylor, B. & Robertson, C. SARS-CoV-2 Delta VOC in Scotland: demographics, risk of hospital admission, and vaccine effectiveness. *Lancet* **397**, 2461-2462, doi:10.1016/s0140-6736(21)01358-1 (2021).
- 6 CDC. Risk for COVID-19 Infection, Hospitalization, and Death By Age Group. (Atlanta, 2021).