

Supplementary Materials for “Identification of probiotic responders in cross-over trials using the Bayesian statistical model considering lags of effect period”

Shion Hosoda^{1,2*}, Yuichiro Nishimoto³, Yohsuke Yamauchi³, Takuji Yamada^{3,4}, and Michiaki Hamada^{1,2,5*}

¹Department of Electrical Engineering and Bioscience, Graduate School of Advanced Science and Engineering, Waseda University, Tokyo, Japan

²Computational Bio Big-Data Open Innovation Laboratory, AIST-Waseda University, Tokyo, Japan

³Metabologenomics Inc., Yamagata, Japan

⁴Department of Life Science and Technology, Tokyo Institute of Technology, Tokyo, Japan

⁵Graduate School of Medicine, Nippon Medical School, Tokyo, Japan

*To whom correspondence should be addressed.

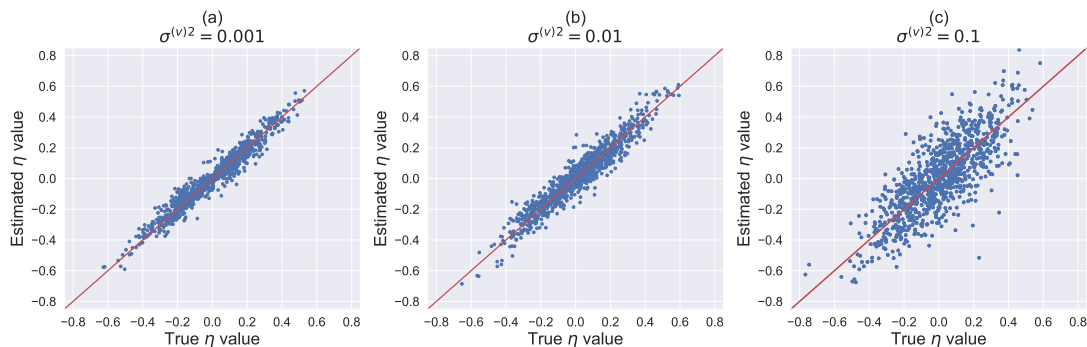


Figure S1: Scatter plots of the true η and estimated posterior expectation of η for each synthetic dataset, where the number of observation points was the same as that of the real dataset. The x - and y - axes indicate the true η and estimated η values, respectively. a, b, and c indicate $\sigma^{(v)2} = 0.001$, $\sigma^{(v)2} = 0.01$, and $\sigma^{(v)2} = 0.1$, respectively. The red line indicates that $y = x$.

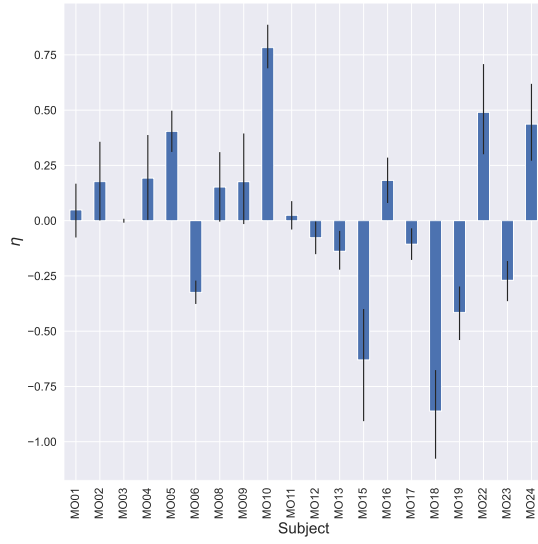


Figure S2: Posterior distributions estimated by the base model (*cf.* Section 3.1 in the main text) of η for each subject. The legend is the same as in Fig. 4 in the main text.

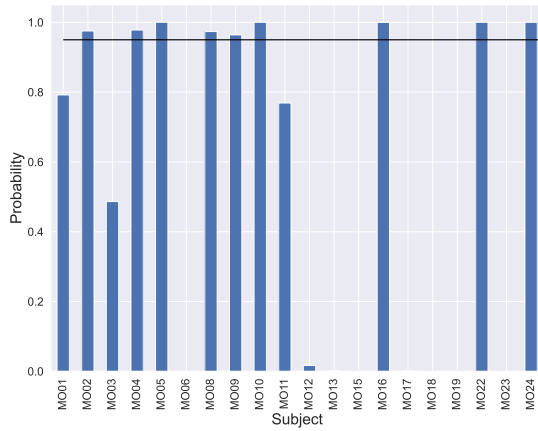


Figure S3: Probability that each subject is a responder based on the posterior distribution estimated by the base model (*cf.* Section 3.1 in the main text). The legend is the same as that in Fig. 5 in the text.

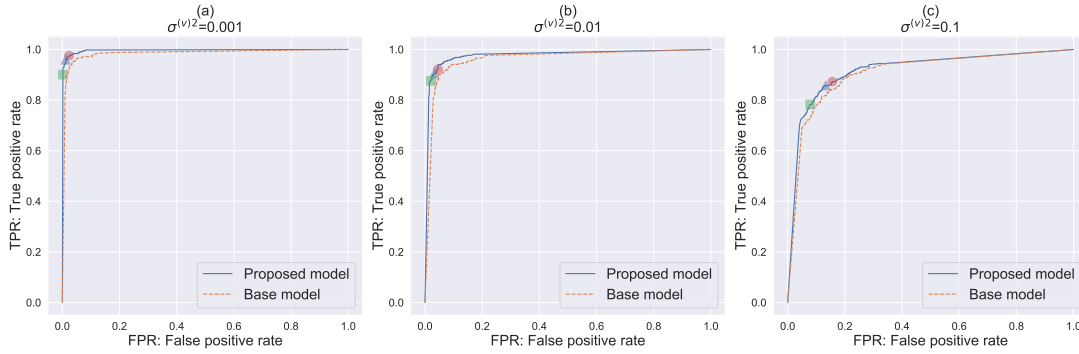


Figure S4: The AUC-ROC curve for identifying responders based on the estimated η in the synthetic datasets of $N = 151$ and $(d_1, d_2, d_3, d_4) = (51, 76, 126, 151)$ using the proposed method when $\mu_{\max} = \nu_{\max} = 5$ and $\mu_{\max} = \nu_{\max} = 0$. The legend is the same as in Fig. 3 in the main text.

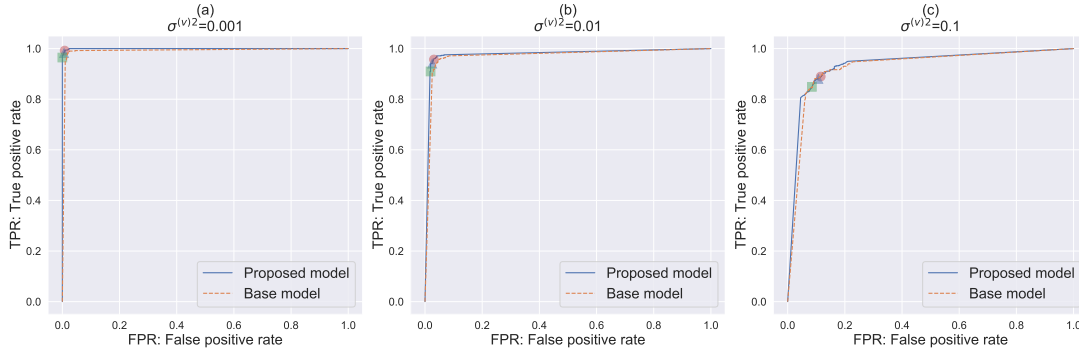


Figure S5: The AUC-ROC curve for identifying responders based on the estimated η in the synthetic datasets of $N = 301$ and $(d_1, d_2, d_3, d_4) = (101, 151, 251, 301)$ using the proposed method when $\mu_{\max} = \nu_{\max} = 5$ and $\mu_{\max} = \nu_{\max} = 0$. The legend is the same as in Fig. 3 in the main text.