

Supplementary Material

“Using routine emergency department data for syndromic surveillance of acute respiratory illness in Germany, week 10-2017 to 10-2021”

T. Sonia Boender, Wei Cai, Madlen Schranz, Theresa Kocher, Birte Wagner, Alexander Ullrich, Silke Buda, Rebecca Zöllner, Felix Greiner, Michaela Diercke, Linus Grabenhenrich

Supplemental Table 1. Case definitions, and case classification (if applicable), used for syndromic surveillance based on routine emergency department data.

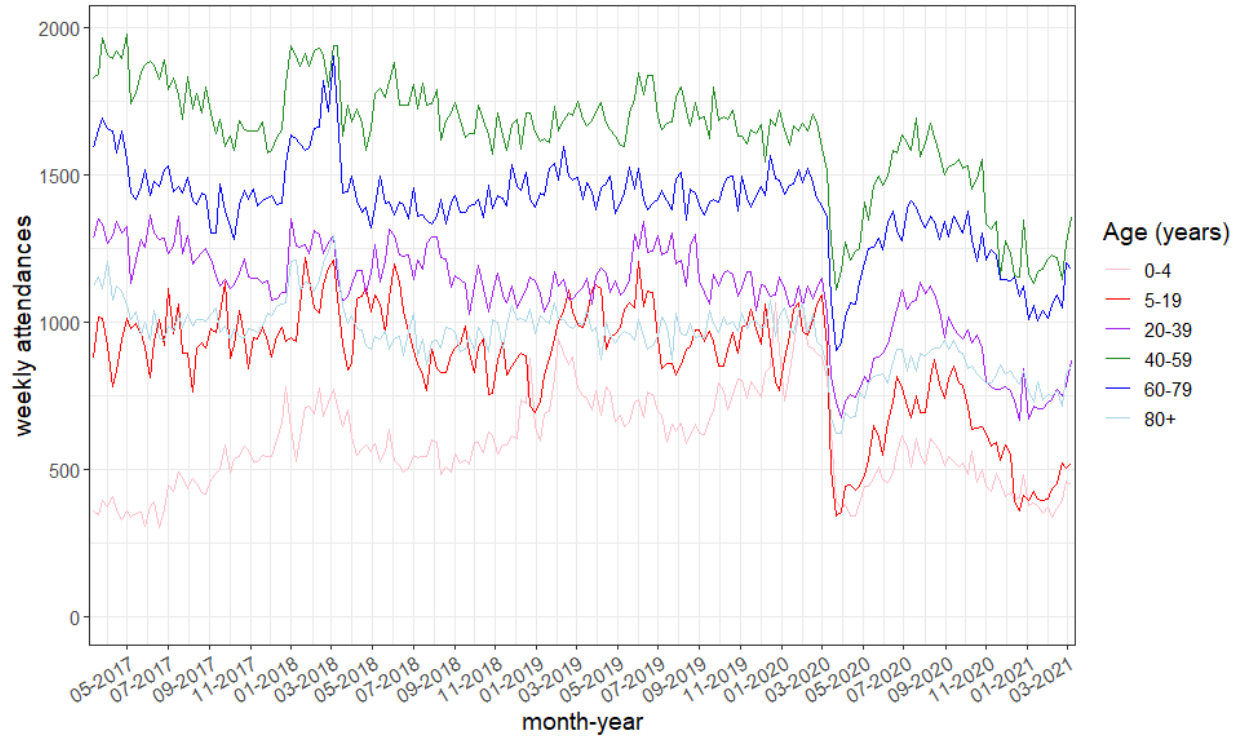
Case	Definition
Acute respiratory illness (ARI)	<ul style="list-style-type: none"> - ICD-10 diagnostic code (any): J00-J22, J44.0, B34.9, U07.1, U07.2 OR - Chief complaint(s): <ul style="list-style-type: none"> o [MTS: breathing problems AND (elevated temperature/fever OR suspected sepsis OR productive cough OR shortness of breath OR elevated breathing)] OR o [MTS: sore throat AND (elevated temperature/fever OR suspected sepsis OR special risk of infection OR known or suspected immunosuppression OR travel i.e. report on recent stay abroad OR special risk of infection OR airway at risk OR short of breathing OR light/medium/strong pain OR unresponsive child OR rapid onset OR shock OR hypersalivation OR stridor OR drowsy i.e. altered level of consciousness)] OR o [MTS: asthma AND (elevated temperature/fever OR suspected sepsis)] OR o [MTS: feeling unwell AND insufficient breathing] OR o [CEDIS-PCL (any): 661, 154, 653, 651, 103, 104]
Severe acute respiratory illness (SARI)	<ul style="list-style-type: none"> - ICD-10 diagnostic code (any): J09-J22, U07.1, U07.2 AND - Disposition: <ul style="list-style-type: none"> o [Inpatient admission: internal transfer, operational unit, monitoring unit, regular ward OR o External transfer]

Supplemental Table 1. continued.

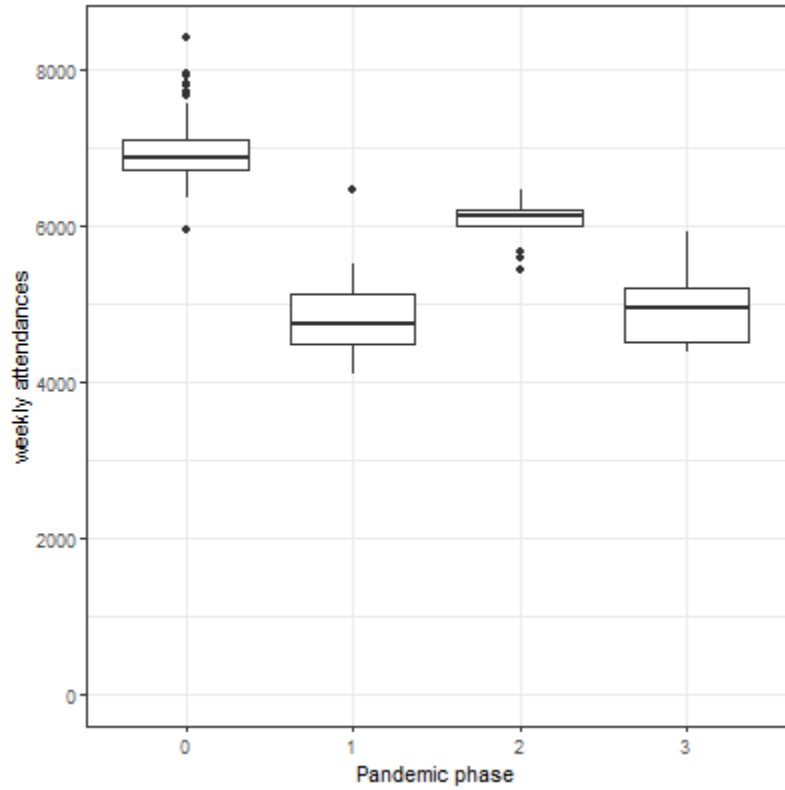
Influenza-like illness (ILI)	<p>PROBABLE CASE</p> <ul style="list-style-type: none"> - ICD-10 diagnostic code (any): J06.-, J12.8, J12.9, J18.-, J22 <p>OR</p> <ul style="list-style-type: none"> - Chief complaint(s): <ul style="list-style-type: none"> o [MTS: breathing problems <p>AND (elevated temperature/fever OR suspected sepsis OR productive cough OR shortness of breath OR elevated breathing)]</p> <p>OR</p> o [MTS: sore throat <p>AND (elevated temperature/fever OR suspected sepsis OR special risk of infection OR known or suspected immunosuppression OR travel i.e. report on recent stay abroad OR special risk of infection OR airway at risk OR short of breathing OR light/medium/strong pain OR unresponsive child OR rapid onset OR shock OR hypersalivation OR stridor OR drowsy i.e. altered level of consciousness)]</p> <p>OR</p> o [MTS: asthma <p>AND (elevated temperature/fever OR suspected sepsis)]</p> <p>OR</p> o [MTS: feeling unwell AND insufficient breathing] o [CEDIS-PCL (any): 661, 154, 653, 651, 103, 104] <p>AND</p> <ul style="list-style-type: none"> - Fever: <ul style="list-style-type: none"> o Temperature ≥ 38 °C <p>OR</p> o Chief complaint: <ul style="list-style-type: none"> ▪ MTS: fever <p>OR</p> ▪ CEDIS-PCL: 852 <p>OR</p> o [ICD-10 diagnostic code (any): R50.8, R50.9] <p>CONFIRMED CASE</p> <ul style="list-style-type: none"> - ICD-10 diagnostic code (any): J09, J10.-, J11.-
Respiratory syncytial virus (RSV) –	<p>PROBABLE CASE</p> <ul style="list-style-type: none"> - ICD-10 diagnostic code (any): J12.8, J12.9, J18.-, J20.8, J20.9, J21.8, J21.9, J22 <p>AND</p> <ul style="list-style-type: none"> - Age ≤ 2 years <p>CONFIRMED CASE</p> <ul style="list-style-type: none"> - ICD-10 diagnostic code (any): J12.1, J20.5, J21.0, B97.4
Coronavirus disease 2019 (COVID-19)	<p>PROBABLE CASE</p> <ul style="list-style-type: none"> - ICD-10 diagnostic code (any): U07.1, U07.2 <p>CONFIRMED CASE</p> <ul style="list-style-type: none"> - ICD-10 diagnostic code: U07.1

Supplemental Table 2. Age and sex of emergency attendees over time, broken down by subsequent pandemic phases.

	≤W09/2020 (N=1082850)	W10/2020-W20/2020 (N=55212)	W21/2020-W30/2020 (N=59462)	W31/2020-W39/2020 (N=55697)	≥W40/2020 (N=119737)	Overall (N=1372958)
Age (years)						
0-2	56356 (5.2%)	3822 (6.9%)	3767 (6.3%)	3482 (6.3%)	7611 (6.4%)	75038 (5.5%)
3-4	40817 (3.8%)	1591 (2.9%)	1483 (2.5%)	1428 (2.6%)	2707 (2.3%)	48026 (3.5%)
5-9	56330 (5.2%)	2239 (4.1%)	2654 (4.5%)	2467 (4.4%)	4119 (3.4%)	67809 (4.9%)
10-14	43080 (4.0%)	1662 (3.0%)	1979 (3.3%)	2072 (3.7%)	3670 (3.1%)	52463 (3.8%)
15-19	49574 (4.6%)	2073 (3.8%)	2301 (3.9%)	2516 (4.5%)	4690 (3.9%)	61154 (4.5%)
20-39	183765 (17.0%)	9008 (16.3%)	9912 (16.7%)	9392 (16.9%)	19068 (15.9%)	231145 (16.8%)
40-59	269240 (24.9%)	14393 (26.1%)	15604 (26.2%)	14160 (25.4%)	30939 (25.8%)	344336 (25.1%)
60-79	227639 (21.0%)	12393 (22.4%)	13276 (22.3%)	11984 (21.5%)	27658 (23.1%)	292950 (21.3%)
80+	156049 (14.4%)	8031 (14.5%)	8486 (14.3%)	8196 (14.7%)	19275 (16.1%)	200037 (14.6%)
Sex						
female	524790 (48.5%)	26482 (48.0%)	28608 (48.1%)	26792 (48.1%)	58279 (48.7%)	664951 (48.4%)
male	557971 (51.5%)	28728 (52.0%)	30851 (51.9%)	28902 (51.9%)	61456 (51.3%)	707908 (51.6%)
other	89 (0.0%)	2 (0.0%)	3 (0.0%)	3 (0.0%)	2 (0.0%)	99 (0.0%)

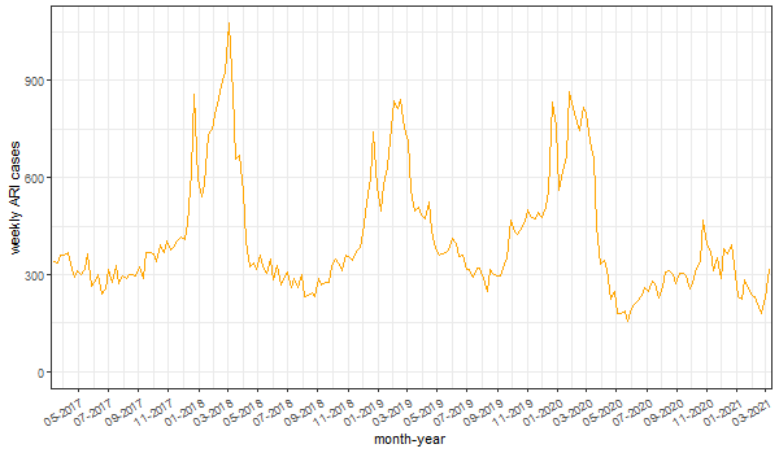


Supplemental Figure 1. Weekly emergency department attendances, by age group.

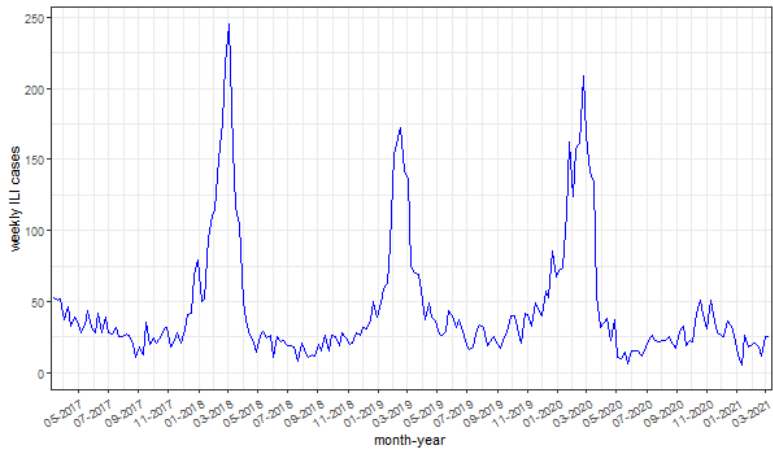


Supplemental Figure 2. Weekly emergency department attendances, a) before and during the pandemic, broken down by subsequent pandemic phases.

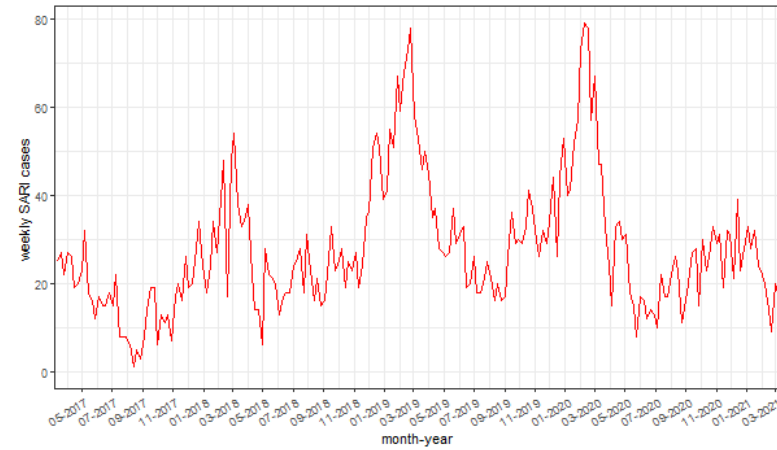
All comparisons: Wilcoxon rank sum $P < .001$



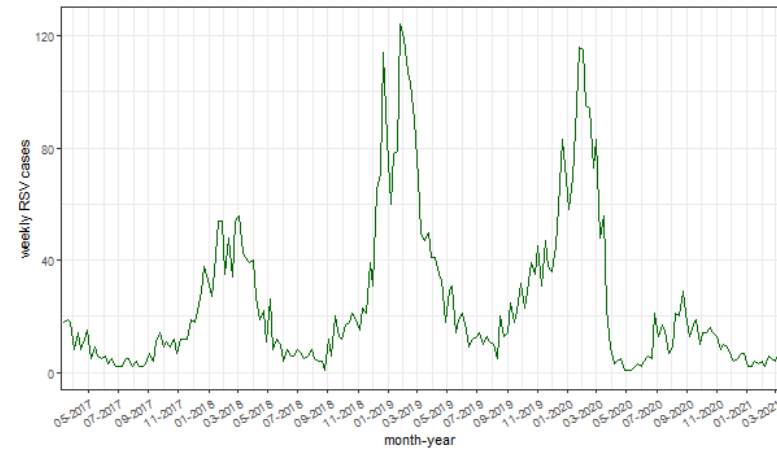
Supplemental Figure 3A



Supplemental Figure 3C

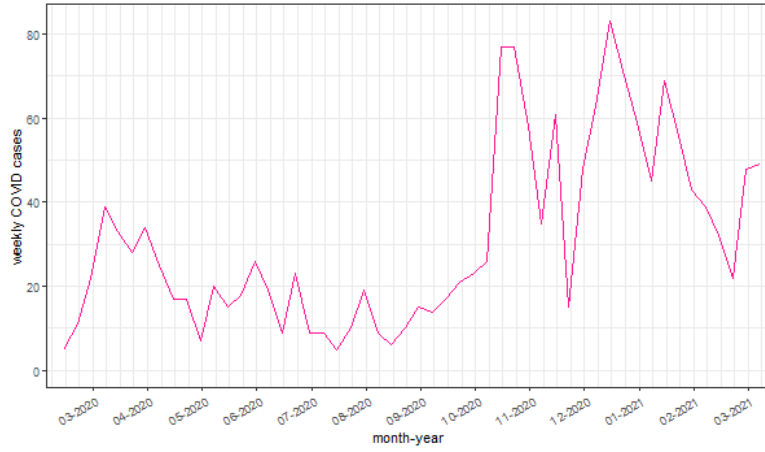


Supplemental Figure 3B

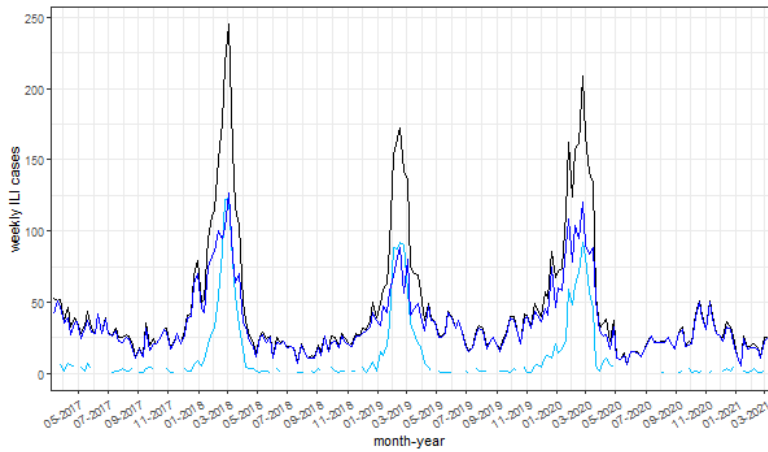


Supplemental Figure 3D

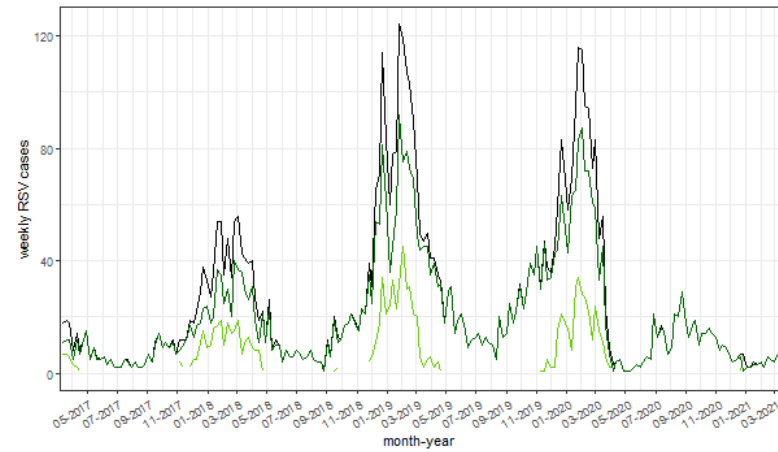
Supplemental Figure 3. Weekly case count of acute respiratory illness (ARI; 3A), severe acute respiratory illness (SARI; 3B), influenza-like-illness (ILI; 3C), and respiratory syncytial virus (RSV; 3D), between 6 March 2017 and 13 March 2021.



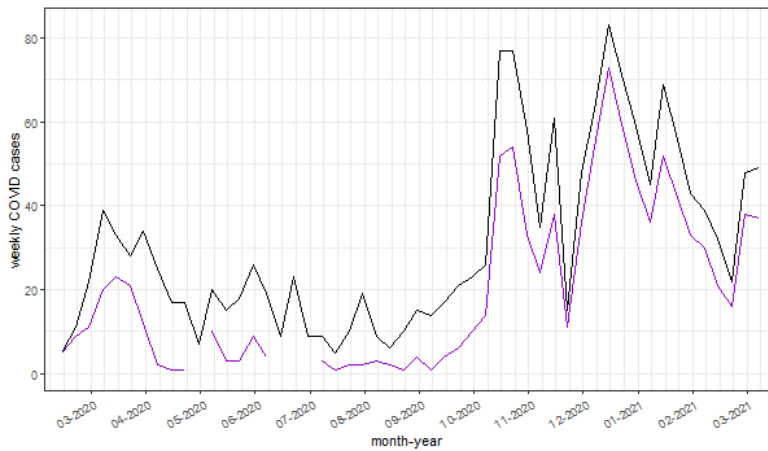
Supplemental Figure 4. Weekly case count of COVID-19, between 6 March 2020 and including 13 March 2021.



Supplemental Figure 5A: ILI cases (black), probable (dark blue), confirmed (light blue)



Supplemental Figure 5B: RSV cases (black), probable (dark green), confirmed (light green)



Supplemental Figure 5C: COVID-19 cases (black), confirmed (purple)

The combined case definition of COVID-19 cases equals the probable case definition.

Supplemental Figure 5. Weekly case counts, by probable and possible case classifications as well as the combined case definition, of influenza-like-illness (ILI, 5A), respiratory syncytial virus (RSV, 5B), and COVID-19 (5C), between 6 March 2017 and 13 March 2021.