

## Supplementary Data

**Figure S1.** Heat treatment on endogenous actin detection in saliva. Contrived samples spiked with 2-10,000 viral copies/ $\mu\text{L}$ , were processed in triplicate using either 75°C for 15 min, 85°C for 10 min, 95°C for 5 min, or no heat. The scanned image of the post-amplification actin LAMP plate with overlaid Tt values (upper panel) and the plot of actin Tt values (lower panel) are shown.

**Figure S2.** Suitability of the extraction-free RT-LAMP method for pooled saliva testing. Positive saliva was combined with equal volumes of 1 to 15 randomly selected negative saliva samples from different individuals, corresponding to dilution series of 1:2 through 1:16 of the original viral titer, and tested in COVID and actin LAMP reactions. All samples were tested in triplicate. LAMP Tt values are plotted.

**Figure S3. Sensitivity and specificity test.** Previously identified SARS-CoV-2 positive (n=30) and negative (n=30) samples were tested blindly in COVID and actin LAMP reactions. The scanned images of the post-amplification COVID and actin LAMP plates are shown with overlaid Tt values. Positive samples were revealed after the experiment and marked with red circles. The missed positive sample was marked with a red square. Negative and positive controls are marked with a blue rectangle. Experiments were performed 3 times with 2 different operators. The result from one experiment is shown.

**Figure S4. RT-qPCR standard curve using Twist RNA.** Different copy numbers of Twist RNA (5, 10, 100, 1000, and 10000) were used to generate a standard curve using the Luna® SARS-CoV-2 RT-qPCR Multiplex Assay Kit. Amplification and standard curves from both N1 and N2 targets are shown.

**Figure S5. Laboratory Information Management System: LIMS.** (A) User Interface: (1) Patient Log In, (2) Sample Submission and (3) Patient Result. (B) Operator Interface: (1) New Run, (2) Results Uploaded, (3) Sample Status, (4) Results Review and (5) Batch History.

**Table S1. Internal actin control detection of the 16 samples**

<b>Samples</b>	<b>Purified Saliva RNA</b>				<b>Saliva Lysate</b>	
	<b>RT-qPCR RNase P (Cq)</b>		<b>Actin LAMP (Tt)</b>		<b>Actin LAMP (Tt)</b>	
<b>1</b>	N/A	N/A	8.9	9.3	9.1	9.1
<b>2</b>	43.1	43.2	10.4	10.3	11.1	11.2
<b>3</b>	30.4	30.2	7.2	7.2	8.8	8.8
<b>4</b>	33.9	39.5	9.2	9.3	10.6	10.6
<b>5</b>	41.1	39.0	8.3	8.3	11.1	11.4
<b>6</b>	35.1	34.8	8.5	8.7	12.1	12.0
<b>7</b>	35.4	35.9	9.4	9.4	10.2	10.3
<b>8</b>	33.7	33.2	8.3	8.3	11.8	11.9
<b>9</b>	40.1	N/A	10.8	11.5	10.7	10.7
<b>10</b>	N/A	38.0	11.0	11.8	10.6	10.4
<b>11</b>	39.9	37.3	9.1	9.0	9.4	9.9
<b>12</b>	33.2	33.7	9.7	9.6	9.6	9.7
<b>13</b>	33.7	33.7	8.4	8.5	10.3	10.2
<b>14</b>	37.7	38.9	10.8	11.1	10.6	10.0
<b>15</b>	32.8	32.9	8.5	8.5	10.0	10.0
<b>16</b>	38.8	38.8	9.8	10.2	10.5	10.5

No amplification is denoted N/A.

# Figure S1

Virus copies/ $\mu$ L	No heat			75°C 15min			85°C 10min			95°C 5min		
10000	10.3	10.5	10.5	9.5	9.4	9.6	9.0	8.8	8.9	8.6	8.6	8.9
2500	10.6	10.3	10.3	9.4	9.6	9.4	8.9	8.9	8.9	8.5	8.6	8.5
625	10.6	10.3	10.1	9.8	9.6	9.7	8.7	8.5	8.8	8.8	8.7	8.6
156	10.7	10.7	10.5	9.5	9.6	9.4	8.8	8.7	8.9	9.0	9.0	8.7
39	10.5	10.7	10.4	10.0	9.6	9.5	8.8	8.6	8.9	9.0	8.8	9.0
10	11.0	10.7	10.2	9.9	9.6	9.4	8.8	8.8	9.0	8.8	8.8	8.8
2	10.7	10.4	10.1	9.6	9.6	9.8	8.9	9.1	9.2	8.8	8.7	8.9
0	32.7	32.4	24.8	32.0	33.0	32.2	32.1	32.2	24.5	32.1	28.6	32.5

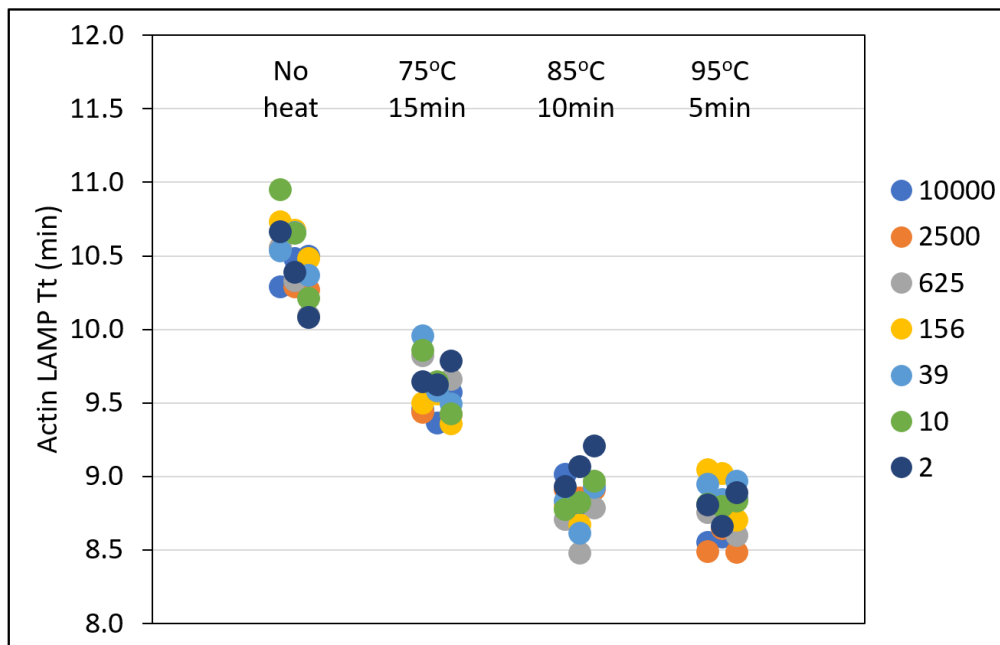


Figure S2

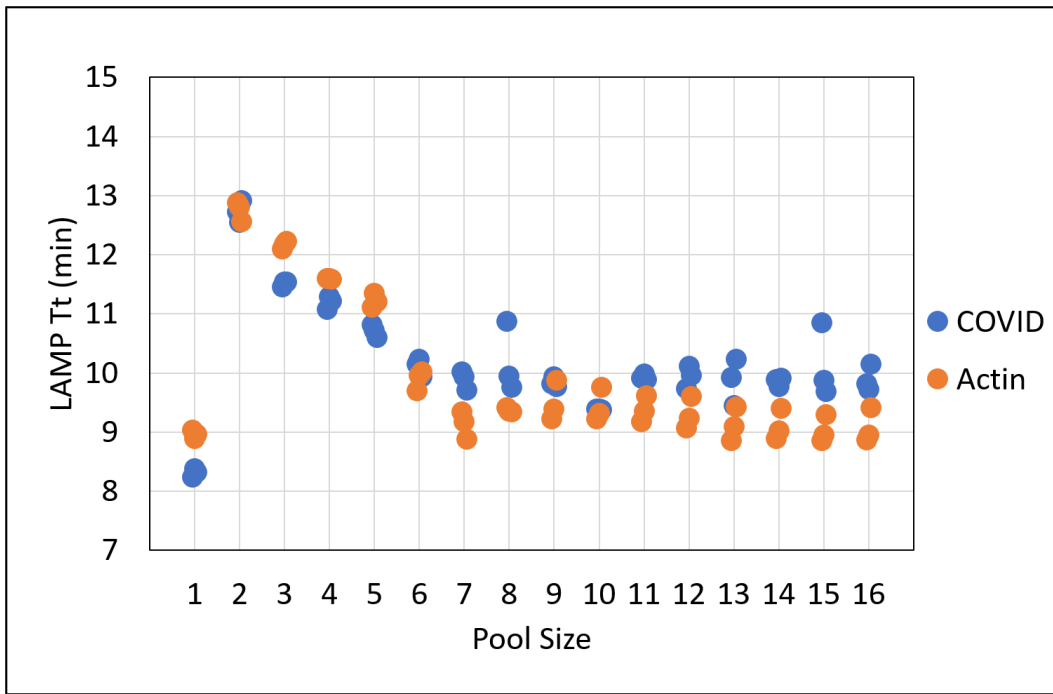
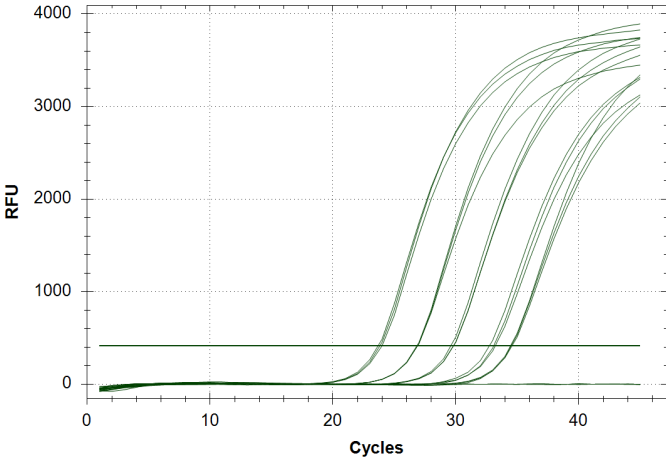


Figure S3

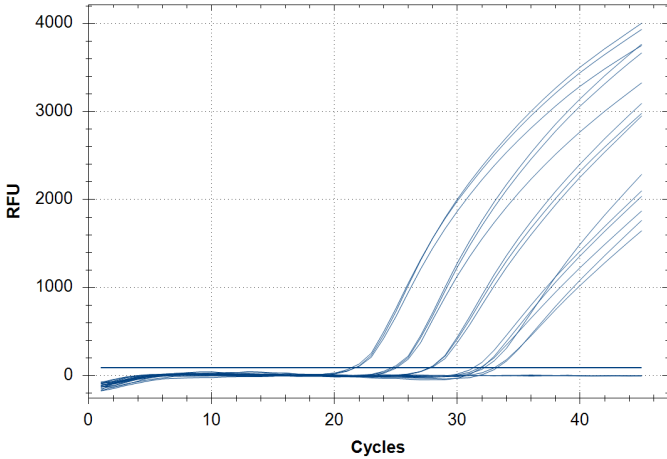


# Figure S4

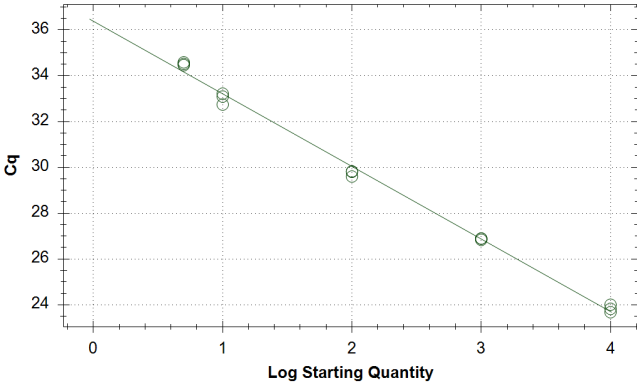
**N1**



**N2**

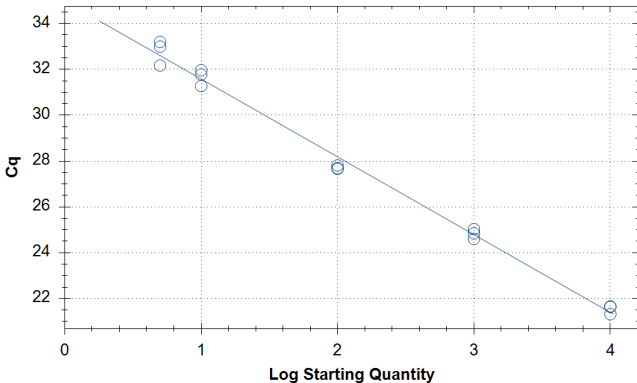


Standard Curve



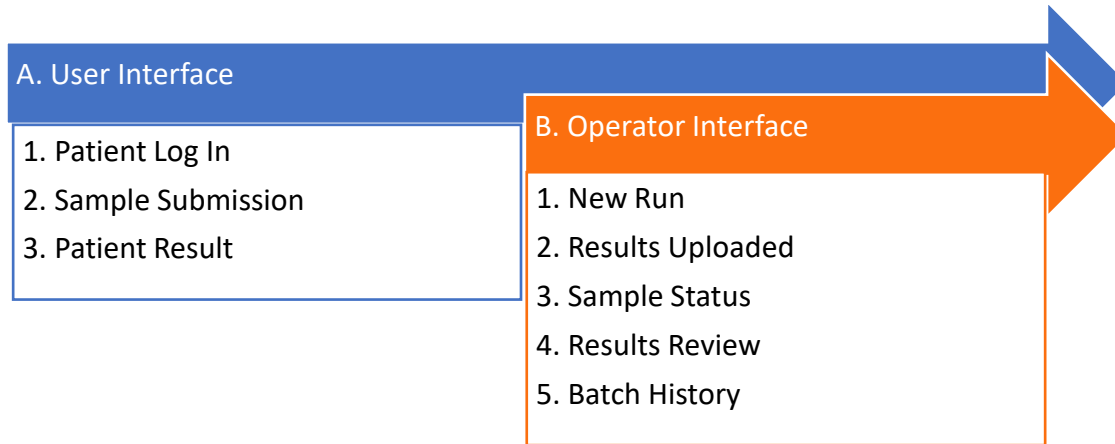
○ Standard  
 × Unknown  
 — HEX E=106.8% R<sup>2</sup>=0.996 Slope=-3.169 y-int=36.380

Standard Curve



○ Standard  
 × Unknown  
 — FAM E= 97.0% R<sup>2</sup>=0.993 Slope=-3.395 y-int=34.973

# Figure S5



## A. User Interface

1. Patient Log In
2. Sample Submission
3. Patient Result

## B. Operator Interface

1. New Run
2. Results Uploaded
3. Sample Status
4. Results Review
5. Batch History

## A. User Interface

NEW ENGLAND BioLabs<sup>INC.</sup>

SARS-CoV-2 (COVID-19) Testing

Log in with your NEB email address

Don't have an NEB email address?

PRIVACY POLICY

© Copyright 2021 New England Biolabs. All Rights Reserved.

NEW ENGLAND BioLabs<sup>INC.</sup>

SARS-CoV-2 (COVID-19) Testing

Hello, Submitter. Welcome to the NEB SARS-CoV-2 (COVID-19) testing site.  
Please select from the options below.

Submit Sample

Status of Your Samples

PRIVACY POLICY


NEW ENGLAND BioLabs<sup>INC.</sup>

SARS-CoV-2 (COVID-19) Testing

PATIENT	Submitter Name
Barcode	AbCD1ef-gHI2J
Sample Date	2022-02-24 8:57 AM
Result Date	2022-02-24 11:59 AM
Test Result	<b>NEGATIVE FOR SARS-CoV-2 (clinical report)</b>

PRIVACY POLICY

## B. Operator Interface

 SARS-CoV-2 (COVID-19) Testing [Runs](#) [Amp. Details](#) [Sample Status](#) [Finalize Batch](#) [Result Batches](#) Logged in as: cov-admin [Sign out](#)

**Hello, Admin. Welcome to the NEB SARS-CoV-2 (COVID-19) testing site.**  
*Please select from the options below.*

[Runs](#) [Submit Sample](#) [Submitters](#)

[Amp. Details](#) [Status of Your Samples](#) [Thermometers](#)

[Sample Status](#) [Release Pending](#) [Labels](#)

[Results Summary](#) [Result Batches](#)

[PRIVACY POLICY](#)

© Copyright 2021 New England Biolabs. All Rights Reserved.

## B1. New Run

### New Run

Operator

Suffix  e.g. Rack01

Instrument checks  neg80\_freezer  neg20\_freezer  cold\_box\_32022  cold\_box\_BL2  biosafety\_cabinet   
 thermomixer  liquid\_handler  thermocycler  scanner

[Check All](#)

#### Inactivation

# of samples expected

Layout images  No file chosen

Oven temperature Before:  After:

#### Lysis

Plate barcodes SLB:  SARS-CoV-2:  Actin:   
Scan barcode Scan barcode Scan barcode



Negative Control



## B2. Results Upload

### Amplification

Bio-Rad Plate Map [Bio-Rad plate map](#)

Plate Barcode

Target

Operator

Bio-Rad .pcrd file  No file chosen [Current .pcrd File](#)

Cq Results .xlsx file  No file chosen [Current Cq File](#)

Amp Results .xlsx file  No file chosen [Current Amp Results File](#)

### Plate Images

Pre-Amp. Image  No file chosen [Current Pre-Amp Image](#)

Post-Amp. Image  No file chosen [Current Post-Amp Image](#)

[Update Bio rad experiment](#)

[Destroy](#) | [Run](#)

## B3. Sample Status



[SARS-CoV-2 \(COVID-19\) Testing](#) [Runs](#) [Amp. Details](#) [Sample Status](#) [Finalize Batch](#) [Result Batches](#)

Logged in as: cov-admin

[Sign out](#)

## Samples

[All Incomplete](#) [New](#) [In Progress](#) [Final Release Pending](#) [Invalid](#) [Not Received](#)

[Check All](#) 17 samples match status: New

Show  entries

Search:

Sample Date	Sample	Experiments	SARS Cqs	Human Cqs	Result	Release Result	Notes
2022-03-01 9:20 AM	AbCD1ef-gHI2J (New)				Result Pending	no data	<input type="text" value="Notes..."/>
2022-03-01 11:01 AM	(New)				Result Pending	no data	<input type="text" value="Notes..."/>
2022-03-01 12:05 PM	AbCD3ef-gHI2J (New)				Result Pending	no data	<input type="text" value="Notes..."/>

## B4. Result Review

### Release Pending Results

Temperature log  Temperature logs (107).xlsx

Show  entries 
Search:

Sample Registration Date	Sample	SARS-CoV-2 Cq Values	Human Cq Values	Result	Confirm	Notes
2022-03-02 1:11 PM	AbCD1ef-gHI2J	N/A	27.3	<input type="text" value="not_detected"/>	<input checked="" type="checkbox"/>	
2022-03-02 3:56 PM		N/A	25.3	<input type="text" value="not_detected"/>	<input checked="" type="checkbox"/>	
2022-03-02 3:58 PM	AbCD3ef-gHI2J	N/A	25.6	<input type="text" value="not_detected"/>	<input checked="" type="checkbox"/>	
2022-03-02 4:03 PM		N/A	28.0	<input type="text" value="not_detected"/>	<input checked="" type="checkbox"/>	

## B5. Batch History

### SARS-CoV-2 Testing Results

Show  entries  Search:

Batch Approval Date	Result Summary
2022-03-03	SARS_CoV-2 detected in 1/442 samples (0 inconclusive, 3 not identified)
2022-03-01	SARS_CoV-2 detected in 1/418 samples (0 inconclusive, 1 not identified)
2022-02-28	SARS_CoV-2 detected in 0/434 samples (0 inconclusive, 3 not identified)
2022-02-24	SARS_CoV-2 detected in 1/415 samples (0 inconclusive, 4 not identified)
2022-02-22	SARS_CoV-2 detected in 0/368 samples (0 inconclusive, 1 not identified)
2022-02-18	SARS_CoV-2 detected in 0/68 samples (0 inconclusive, 0 not identified)
2022-02-17	SARS_CoV-2 detected in 1/423 samples (0 inconclusive, 5 not identified)
2022-02-15	SARS_CoV-2 detected in 2/407 samples (0 inconclusive, 2 not identified)
2022-02-14	SARS_CoV-2 detected in 1/411 samples (0 inconclusive, 4 not identified)