

1  
2  
3  
4  
5  
6  
7  
8  
9  
10  
11  
12  
13  
14  
15  
16  
17  
18  
19  
20  
21  
22  
23  
24  
25  
26  
27  
28  
29  
30  
31

## **Development and Implementation of a Simple and Rapid Extraction-Free Saliva SARS-CoV-2 RT-LAMP Workflow for Workplace Surveillance**

**Zhiru Li<sup>1</sup>, Jacqueline L. Bruce<sup>1</sup>, Barry Cohen<sup>1</sup>, Caileigh V. Cunningham<sup>1</sup>, William E. Jack<sup>1</sup>, Katell Kunin<sup>1</sup>, Bradley W. Langhorst<sup>1</sup>, Jacob Miller<sup>1</sup>, Reynes A. Moncion<sup>1</sup>, Catherine B. Poole<sup>1</sup>, Prem K. Premsrirut<sup>2</sup>, Guoping Ren<sup>1</sup>, Richard J. Roberts<sup>1</sup>, Nathan A. Tanner<sup>1</sup>, Yinhua Zhang<sup>1</sup>, Clotilde K. S. Carlow<sup>1\*</sup>**

<sup>1</sup>New England Biolabs, Ipswich, Massachusetts, 01938, USA  
<sup>2</sup>Mirimus Inc. Brooklyn, New York, 11226, USA

32 **Running Title:** Saliva SARS-CoV-2 RT-LAMP Test for Workplace Surveillance

33 **Keywords:** Saliva, SARS-CoV-2, RT-LAMP, workplace surveillance

34 **\*Corresponding author:** Clotilde Carlow, Division of Genome Biology, New

35 England Biolabs, Ipswich, MA 01938. Tel: 978 380 7263, Fax: 978 921 1350, e-

36 mail: [carlow@neb.com](mailto:carlow@neb.com).

37

38

## 39 **Abstract**

40           Effective management of the COVID-19 pandemic requires widespread and  
41 frequent testing of the population for SARS-CoV-2 infection. Saliva has emerged as an  
42 attractive alternative to nasopharyngeal samples for surveillance testing as it does not  
43 require specialized personnel or materials for its collection and can be easily provided by  
44 the patient. We have developed a simple, fast, and sensitive saliva-based testing  
45 workflow that requires minimal sample treatment and equipment. After sample  
46 inactivation, RNA is quickly released and stabilized in an optimized buffer, followed by  
47 reverse transcription loop-mediated isothermal amplification (RT-LAMP) and detection  
48 of positive samples using a colorimetric and/or fluorescent readout. The workflow was  
49 optimized using 1,670 negative samples collected from 172 different individuals over the  
50 course of 6 months. Each sample was spiked with 50 copies/ $\mu$ L of inactivated SARS-  
51 CoV-2 virus to monitor the efficiency of viral detection. Using pre-defined clinical  
52 samples, the test was determined to be 100% specific and 97% sensitive, with a limit of  
53 detection comparable to commercially available RT-qPCR-based diagnostics. The  
54 method was successfully implemented in a CLIA laboratory setting for workplace  
55 surveillance and reporting. From April 2021-February 2022, more than 30,000 self-  
56 collected samples from 755 individuals were tested and 85 employees tested positive  
57 mainly during December and January, consistent with high infections rates in  
58 Massachusetts and nationwide. The rapid identification and isolation of infected  
59 individuals with trace viral loads before symptom onset minimized viral spread in the  
60 workplace.

61

## 62 **Introduction**

63 Early detection of infection followed by isolation of contagious individuals is key to  
64 preventing the spread of SARS-CoV-2 infection in the population. The first diagnostic  
65 tests developed involved the use of nasopharyngeal (NP) swabs to collect nasopharyngeal  
66 and oropharyngeal specimens from deep in patients' noses and throats. This method  
67 poses considerable discomfort to the patient and requires trained healthcare professionals  
68 for sample collection. To detect virus, the NP swabs are commonly processed by  
69 purifying viral RNA upstream of reverse-transcription-quantitative polymerase chain  
70 reaction (RT-qPCR), a laborious molecular diagnostic method requiring expensive  
71 equipment and highly skilled operators. Shortages of the specialized, medical-grade NP  
72 swabs in the early days of the pandemic, as well as limited numbers of trained medical  
73 and laboratory personnel, prompted a search for alternative, simpler testing approaches  
74 that can be broadly implemented.

75         The use of saliva as a less invasive sampling specimen is advantageous since it  
76 can be easily self-collected into simple vessels without the need for a healthcare worker,  
77 thereby reducing a considerable bottleneck and cost. During the early and acute phases of  
78 SARS-CoV-2 infection, a relatively high viral load can be detected in saliva [1-5] and  
79 comparative studies show strong agreement in the results obtained from paired  
80 nasopharyngeal and saliva samples from the same individual [1, 6-13]. Importantly,  
81 saliva has also been shown to be an effective specimen for the detection of infection in  
82 asymptomatic individuals [10, 14, 15] who have a high rate of viral shedding [16] and  
83 therefore pose a significant threat in terms of viral spread.

84 Initial studies exploring the potential use of saliva primarily used RT-qPCR for  
85 SARS-CoV-2 detection [17-19]. More recently, reverse-transcription loop-mediated  
86 isothermal amplification (RT-LAMP) has emerged as an attractive and affordable  
87 alternative to RT-qPCR. RT-LAMP permits the rapid detection of pathogens without  
88 sophisticated equipment while retaining high levels of specificity and sensitivity [20, 21].  
89 A polymerase with strand displacement activity enables exponential amplification of the  
90 target sequence under isothermal conditions [17, 20, 22]. Because of LAMP-based  
91 diagnostics simplicity, rapidity, and compatibility with various detection modalities,  
92 LAMP-based diagnostics have been deployed in low-resource or field settings, including  
93 the diagnosis and surveillance of neglected tropical diseases [23-27] and viral infections  
94 [28, 29]. During the COVID-19 pandemic, saliva-based RT-LAMP methods are  
95 increasingly being explored [8, 11, 14, 30, 31] and RT-LAMP has become a standard  
96 COVID test method alongside RT-qPCR. Compared with RT-qPCR, the tolerance of the  
97 reaction chemistry used in LAMP to the inhibitors present in clinical samples [21, 32]  
98 can obviate the need for a nucleic acid extraction/purification step, reducing both the time  
99 and cost to process samples. In the case of saliva, a more biologically complex sample  
100 [33] than nasal fluid, additional care should be taken when a minimal or extraction-free  
101 method is being considered. Saliva pH, color, viscosity, and RNase activities can vary  
102 widely and potentially impact the ability to detect viral RNA.

103 In the present study, we report an extraction-free, saliva-based RT-LAMP  
104 workflow for SARS-CoV-2 detection with the option of a simple colorimetric endpoint  
105 and/or a semi-quantitative fluorescence readout. We demonstrate the robustness of the  
106 method using a large cohort of contrived human samples and successful implementation

107 for frequent surveillance testing in the workplace. This has enabled us to identify and  
108 isolate infected individuals with trace viral loads before symptom onset and limit viral  
109 spread.

110

111

## 112 **Materials and Methods**

### 113 **Ethical approval**

114 Review and approval were obtained from the WCG/New England Institutional Review  
115 Board (IRB), Study Number 1298746. All relevant ethical guidelines and regulations  
116 were followed and study participants, or their legal guardians, provided written informed  
117 consent. Collection, processing, and reporting of COVID-19 testing results were  
118 performed in compliance with the CLIA (Clinical Laboratory Improvement  
119 Amendments) registration granted to New England Biolabs.

120

### 121 **Saliva samples**

122 A total of 1,670 saliva samples were donated by 172 uninfected individuals during  
123 October 2020-March 2021 as part of the IRB study. Each specimen was anonymized  
124 prior to use. Between April 2021-February 2022, 755 individuals participated in a  
125 workplace surveillance program, providing saliva specimens 1-3 times/week. SARS-  
126 CoV-2 reference positive and negative saliva samples, previously tested following an  
127 RNA extraction and RT-qPCR procedure, were kindly provided by Mirimus Clinical  
128 Labs (Brooklyn, NY).

129 Prior to saliva collection, donors were requested to refrain from drinking anything  
130 but water, eating, chewing gum or tobacco, or smoking for at least 30 minutes prior to  
131 collection. Saliva was self-collected by passive drooling through a 1.0 mL unfiltered  
132 pipette tip into 1.5 mL tubes, each pre-applied with a pair of QR Codes, one on the top  
133 and one on the side, for accurate specimen identification. Unless specified, samples were  
134 stored at room temperature for less than 4 hours or overnight at 4°C prior to testing.  
135 Tubes containing saliva were heated at 65°C for 30 min in a benchtop incubator (Boekel  
136 Scientific, Model 138200) before opening to inactivate any virus present [34]. All  
137 samples were handled in a biohazard hood (SterilGARD Hood Class II Type A/B3).

138

### 139 **Sample preparation**

140 An extraction-free saliva lysis buffer (SLB) was developed and prepared as a 2X solution  
141 containing 5 mM tris(2-carboxyethyl) phosphine (TCEP, Millipore Cat# 580567), 22 mM  
142 sodium hydroxide (Sigma 72068), 2 mM Ethylenediaminetetraacetic acid (EDTA,  
143 Invitrogen 15575-038) and 0.4% Pluronic F-68 (Gibco 24040-032). To release and  
144 stabilize RNA for detection, 15 µL of heat-inactivated saliva samples were mixed with 15  
145 µL of 2X SLB buffer. Mixed samples were heated in a thermocycler (Bio-Rad T100  
146 Thermal Cycler) at 95°C for 5 min, unless otherwise indicated, then cooled to 4°C. For  
147 each RT-LAMP reaction, 2 µL of treated saliva sample was used in a 20 µL reaction.

148 For comparison studies, RNA was purified from saliva using the Monarch® Total  
149 RNA Miniprep Kit (NEB, Cat# T2010) following the protocol for Saliva, Buccal Swabs,  
150 and Nasopharyngeal Swabs. RNA was eluted with 80 µL of nuclease-free water,

151 quantified using the Qubit RNA BR Assay Kit (ThermoFisher Scientific, Cat # Q33224)  
152 and stored at -80°C.

153

## 154 **Control Virus and RNA**

155 As a positive control, gamma-irradiated (BEI, Cat# NR-52287, Lot No. 70035888) or  
156 heat-inactivated (BEI, Cat# NR-52286, Lot no. 70034991) SARS-CoV-2 virions were  
157 used to spike saliva. The reported genome copies for  $\gamma$ -irradiated and heat-inactivated  
158 SARS-CoV-2 were  $1.75 \times 10^9$  and  $3.75 \times 10^8$  genome equivalents/mL, respectively. Viral  
159 stocks were aliquoted into small volumes and stored at -80°C until use. Diluted viral  
160 stock solutions were also prepared in a freezing solution (10% glycerol, 2.5% ethylene  
161 glycol) and stored at -80°C. To generate a dilution series, a known amount of virus was  
162 serially diluted in saliva obtained from SARS-CoV-2 negative donors. Synthetic SARS-  
163 CoV-2 RNA (Twist Bioscience, Cat # MN908947.3) was used to generate a standard  
164 curve for RT-qPCR. Total human RNA from HeLa cells (ThermoFisher, Cat# AM7852)  
165 was used to validate reagents. RNAs were aliquoted and stored at -80°C.

166

## 167 **RT-qPCR**

168 RT-qPCR was performed using the Luna® SARS-CoV-2 RT-qPCR Multiplex Assay Kit  
169 (NEB Cat # E3019) following the manufacturer's instructions. Each 20  $\mu$ L reaction  
170 contained 2  $\mu$ L RNA purified from saliva. N1 (HEX), N2 (FAM) and RNase P (Cy5)  
171 targets were simultaneously detected using the following cycling conditions: carryover  
172 prevention (25°C for 30 sec), cDNA synthesis (55°C for 10 min), initial denaturation



173 (95°C for 1 min) followed by 45 cycles of alternating denaturation (95°C for 10 sec) with  
174 annealing/elongation (60°C for 30 sec) plus a plate read step.

175

## 176 **RT-LAMP**

177 RT-LAMP reactions were performed using the SARS-CoV-2 Rapid Colorimetric LAMP  
178 Assay Kit (NEB Cat # E2019), targeting N and E regions of the SARS-CoV-2 genome,  
179 according to the manufacturer’s instructions. For each specimen, an endogenous actin  
180 control reaction was performed to ensure that sample lysis was achieved, and the saliva  
181 was of sufficient quality. Each sample was tested for both SARS-CoV-2 (COVID  
182 LAMP) and actin (Actin LAMP), unless otherwise stated. Reactions containing water  
183 served as no template controls (NTC) to monitor for any background signal. Inactivated  
184 SARS-CoV-2 virus was used as a positive control to ensure the proper functioning of the  
185 COVID LAMP reaction. Human RNA was used as a positive control for the actin LAMP  
186 reaction. To enable reaction dynamics to be monitored in real-time, SYTO™ 9 green  
187 fluorescent nucleic acid stain (Invitrogen Cat # S34854) was added to a final  
188 concentration of 1 µM in the colorimetric LAMP reaction. Each 20 µL reaction in a strip  
189 tube or 96-well plate was run at 65°C in a Bio-Rad CFX96 or Opus thermocycler and  
190 fluorescence was read in the SYBR/FAM channel every 15 seconds for 97 “cycles”. The  
191 total reaction time was ~35 minutes with each “cycle” corresponding to ~22 seconds  
192 reaction time (15 seconds combined with plate reading time). Following completion of  
193 RT-LAMP, data were processed using the Bio-Rad CFX-Maestro software using baseline  
194 subtracted curve fit and fluorescent drift correction. The time (min) to reach the  
195 fluorescence detection threshold was determined (Tt). No amplification is denoted N/A or

196 assigned a Tt of 36 minutes for plotting purposes. To record color changes, tubes or 96-  
197 well plates were imaged using an Epson Perfection V600 Photo Scanner before and after  
198 the RT-LAMP reaction. A  $Tt \leq 26$  minutes with a post amplification color of yellow  
199 indicated the detection of target, whereas a  $Tt > 26$  minutes or N/A, and a post reaction  
200 color of pink, indicated no detection.

201

### 202 **Extraction-free saliva RT-LAMP workflow for workplace surveillance**

203 Employee samples were processed in a CLIA-registered facility at New England Biolabs.  
204 Saliva was collected in 1.5 mL QR coded tubes and self-registered in a purpose-built  
205 Laboratory Information Management System (LIMS) using cell phone QR code  
206 recognition or manually entered codes. Registered tubes were placed in 96-well  
207 microcentrifuge tube racks. Images of the loaded racks, with positive and negative  
208 controls added, were taken with a mounted cell phone camera by the lab operator and  
209 uploaded to LIMS to track sample location and generate a plate map file for import into  
210 the Bio-Rad CFX-Maestro software. Following heat treatment at 65°C for 30 minutes to  
211 inactivate any virus present, 15  $\mu$ L of sample was mixed with an equal volume of SLB  
212 buffer in barcoded 96-well plate and heated at 95°C for 5 minutes to release and protect  
213 viral RNA for detection. An aliquot of 2  $\mu$ L saliva lysate was then transferred to a 96-  
214 well barcoded plate containing the RT-LAMP reaction mix for viral detection and a  
215 second barcoded plate for endogenous actin detection. Saliva was tested within 4 hours of  
216 collection and both color and real-time fluorescent readouts were obtained for each  
217 sample.

218 A negative COVID test result was reported when the COVID LAMP assay was  
219 negative with endogenous actin detected. If actin was not detected, the sample was  
220 retested in triplicate and reported as inconclusive if any of the repeat testing failed to  
221 detect actin. When a positive COVID LAMP result was obtained, repeat testing was also  
222 performed in triplicate. A final determination of a positive COVID result required 2 or  
223 more positive results in repeat testing, otherwise, the sample would be scored  
224 inconclusive (1/3 positive) or negative (0/3 positive).

225 The pre- and post-amplification images of the colorimetric reactions as well as  
226 amplification files were uploaded and stored in the LIMS tracking system. The test result  
227 was automatically generated from the database based on the cutoff values and criteria  
228 described above. All automated data was manually reviewed before release of results to  
229 individuals or to state health agencies. Links to results were released to employees via  
230 automated email immediately if negative, or after repeat testing in triplicate for  
231 confirmation of a positive or inconclusive outcome. The processing time from sample  
232 inactivation to reporting results was ~2 hours.

233  
234

## 235 **Results**

### 236 **Optimization of a sample preparation method for rapid release and** 237 **stabilization of viral RNA**

238 To achieve highly reliable detection of SARS-CoV-2 in crude saliva, several buffer  
239 formulations including both commercial and previously published protocols were

240 evaluated (data not shown) before selection of a commonly used buffer containing TCEP,  
241 NaOH, and EDTA [35]. This buffer was subsequently modified to include the detergent  
242 Pluronic F-68 and referred to as saliva lysis buffer (SLB). The performance of SLB (with  
243 and without Pluronic F-68) was evaluated on contrived saliva samples. A pool of fresh  
244 saliva from uninfected donors (10 individuals) was spiked with 10-40 copies of virus / $\mu\text{L}$   
245 (6 replicates). Both real-time fluorescence (Tt) and colorimetric (pink/negative,  
246 yellow/positive) readouts were obtained for each sample (**Figure 1A**). The inclusion of  
247 Pluronic F-68 enabled more consistent detection of virus, particularly when less virus  
248 was present. At 40 copies/ $\mu\text{L}$ , all samples turned from pink to yellow in the presence of  
249 Pluronic F-68, whereas 1/6 remained pink in the absence of detergent, indicating a failure  
250 to detect the virus in this sample. At the lowest concentration tested, 10 copies/ $\mu\text{L}$ , 5/6  
251 replicates scored positive using SLB, in contrast to only 3/6 when no detergent was  
252 present. A similar trend was observed using fluorescence as the output with all positive  
253 (yellow) samples reaching the detection threshold between 10-15 minutes, whereas the  
254 samples that scored negative (pink) had very delayed Tt or none (N/A). The detergent did  
255 not interfere with the quality of the color readout, nor the ability to detect endogenous  
256 actin in the same specimen (Actin LAMP). Actin was easily detected with or without  
257 Pluronic F-68.

258 To evaluate the performance of SLB at various temperatures, contrived samples  
259 spiked with 2-10,000 viral copies/ $\mu\text{L}$ , were processed in triplicate using either 75°C for  
260 15 min, 85°C for 10 min or 95°C for 5 min (**Figure 1B-C**). It was apparent that heat  
261 treatment was essential with the highest levels of sensitivity achieved after heating at  
262 85°C for 10 min or 95°C for 5 min, both detecting 39 copies/ $\mu\text{L}$  in all triplicate samples.

263 Heating samples at 95°C for 5 min resulted in the best performance and greatest  
264 reproducibility across a range of viral loads and was selected as the optimal temperature  
265 to rapidly release and stabilize viral RNA. This protocol also proved optimal for actin  
266 detection (**Supplementary Figure S1**).

267

### 268 **Impact of saliva input on diagnostic sensitivity**

269 Saliva is a complex biological mixture that can vary widely in pH, color, and viscosity.  
270 These factors can impair amplification efficiency and influence the performance of the  
271 test [36]. The characteristics that affect saliva viscosity include the presence of  
272 aggregates, variations in temperature, and the time elapsed between sample collection  
273 and testing. Saliva naturally settles into supernatant and sediment phases soon after  
274 collection and storage. To determine if the virus is associated with a particular phase and  
275 if the performance of RT-LAMP is impacted by the different phases, supernatant,  
276 sediment, and evenly resuspended sample from crude positive saliva were each evaluated  
277 as input material (**Figure 2A**). Virus was detected in all phases with the fastest  
278 amplification (lowest Tt) observed in the supernatant, indicating that saliva supernatant is  
279 optimal for testing and no pre-mixing is required. Viral and actin detection was least  
280 efficient when crude sediment was used as input. For comparison, RNA was also purified  
281 from supernatant and sediment. This resulted in overall faster amplification for both  
282 COVID and actin assays than with crude lysate, likely due to the elimination of inhibitors  
283 or interfering substances present in crude saliva. These results demonstrate that saliva  
284 supernatant is suitable for viral detection, obviating the need for an additional re-

285 suspension step, which is particularly helpful when dealing with large numbers of  
286 samples simultaneously.

287 To evaluate the tolerance of the LAMP assay to increasing amounts of saliva,  
288 amounts ranging from 0.25-6  $\mu$ L SARS-CoV-2 positive saliva were used as input in a 20  
289  $\mu$ L reaction (**Figure 2B**). At all volumes of saliva input, virus was detected, but the best  
290 overall performance was observed with 1  $\mu$ L of a saliva sample. Lower than 1  $\mu$ L, more  
291 variation was observed in triplicate samples. Increasing saliva input volume did not  
292 increase sensitivity and delayed the reaction time for viral detection, with a difference as  
293 much as 4 min when using 1  $\mu$ L versus 6  $\mu$ L saliva. A similar trend, though not as  
294 pronounced, was also observed with respect to actin detection following volumetric  
295 adjustments in saliva input (**Figure 2B**).

296 To evaluate the robustness of the extraction-free LAMP assay to individual  
297 variation and optimize the workflow, 1,670 negative saliva samples were collected from  
298 172 different individuals over the course of 6 months. This diverse set of saliva  
299 specimens was used to generate contrived samples each spiked with 50 copies/ $\mu$ L. Of the  
300 1,670 spiked samples, 1,646 (98.6%) scored positive in both colorimetric (data not  
301 shown) and fluorescent LAMP assays (**Figure 3**) using 26 minutes as a cutoff. Most  
302 (91.7%) samples scored positive for COVID within 15 minutes using the real-time  
303 fluorescent signal, whereas 24 samples failed to amplify indicating a false negative rate  
304 of 1.4% (**Figure 3A**). In the actin control LAMP, 1,664 (99.6%) scored positive, most of  
305 them (95.6%) within 15 minutes (**Figure 3B**). When the Tt values from COVID and actin  
306 amplification reactions from all the samples were plotted, a positive correlation (Pearson  
307 correlation coefficient  $R^2$  value of 0.63, P-value < 0.0001) was observed (**Figure 3C**).

308 Pooling saliva is often an attractive option to minimize testing costs. To assess the  
309 suitability of the method for pooled saliva testing, one SARS-CoV-2 positive saliva  
310 specimen was combined with equal volumes of 1 to 15 randomly selected negative saliva  
311 samples from different individuals, corresponding to dilution series of 1:2 through 1:16  
312 of the original viral titer. All 15 sample pools and the single positive specimen yielded a  
313 positive result (**Supplementary Figure S2**). In this experiment, problematic samples  
314 which contained inhibitory substances were diluted in the pool, indicating that a pooling  
315 strategy can be beneficial in cases where a particular specimen has a low pH, is colored  
316 or viscous, or contains salivary inhibitors impairing amplification efficiency.

317

### 318 **Clinical performance of the extraction-free saliva RT-LAMP workflow**

319 Taking into consideration the variability observed between individual saliva specimens,  
320 two separate pools were each generated by combining equal volumes of saliva from ten  
321 different negative individuals and used to determine the limit of detection (LoD). Twenty  
322 replicate samples were prepared from each pool and spiked with 40 copies of virus / $\mu$ L  
323 and then tested in triplicate. All 60 reactions from each of the 2 pools (**Figure 4**) scored  
324 positive (100% sensitivity) within 10 (pool 1) or 11 (pool 2) minutes. When spiked with  
325 fewer copies of virus, the viral RNA was also detected but at a reduced frequency. At 20  
326 copies/ $\mu$ L or 10 copies/ $\mu$ L, sensitivities of 82% (49/60) and 63% (38/60) were obtained,  
327 respectively. Therefore, the LOD for this direct saliva RT-LAMP assay is 40 copies of  
328 virus/ $\mu$ L of saliva.

329 To evaluate the diagnostic capabilities of the workflow using pre-defined clinical  
330 samples, a total of 30 positive and 30 negative saliva specimens were tested at least three

331 times by two different operators in a blinded manner (**Supplementary Figure S3**). The  
332 status of these samples had previously been determined in an RT-qPCR test using  
333 purified RNA from each sample as input (Mirus Inc.). The overall clinical sensitivity  
334  $[(\text{True Positives})/(\text{True Positives} + \text{False Negatives})]$  was 97% and specificity  $[(\text{True}$   
335  $\text{Negatives})/(\text{True Negatives} + \text{False Positives})]$  of 100%, demonstrating the high accuracy  
336 of the workflow.

337 To compare the performance of RT-LAMP with RT-qPCR, 16 saliva samples  
338 containing a range of viral load were tested in both assays. For RT-LAMP, both saliva  
339 lysate and purified RNA were used as input, whereas RT-qPCR was performed using  
340 only purified RNA (**Table 1**). Cq values in RT-qPCR, ranged from 24-39, and all 11  
341 samples with Cq values less than 35 also tested positive in RT-LAMP using saliva lysate  
342 as input. When purified RNA was used in RT-LAMP, one additional sample (#12) scored  
343 positive. This sample had a very low viral load with a Cq value greater than 35 in RT-  
344 qPCR, equivalent to  $\sim 5$  copies of viral RNA (**Supplementary Figure S4**). These data  
345 demonstrate the high performance of the extraction-free saliva RT-LAMP workflow,  
346 which is considerably simpler and faster to perform than RT-qPCR.

347

### 348 **Successful implementation of the extraction-free saliva RT-LAMP** 349 **workflow for workplace surveillance**

350 A workflow from specimen collection to testing and result reporting was implemented in  
351 a CLIA lab setting (**Figure 5, Supplementary Figure S5**). During the 45-week period,  
352 employees were tested once per week from April to July 2021, and from August 2021 to  
353 February 2022, the frequency was increased to twice per week. A total of 755 individuals



354 (registered as 406 males, 341 females, and 8 gender not indicated) provided 32,906 self-  
355 collected saliva samples for testing. The highest number of positive cases was observed  
356 between 24 December 2021 and 14 January 2022 (**Figure 6A**). Of the 85 positive  
357 individuals, there were 47 males, 35 females, and 3 gender not indicated. Samples from  
358 males scored positive within 7-23 minutes (**Figure 6B**). While the difference between Tt  
359 derived from males and females is not statistically significant (Wilcoxon ranked sum, p  
360 value = 0.075), only samples from males (9) were observed with  $Tt \leq 8$  indicating a high  
361 virus titer in these specimens. In analyzing the testing history of positive individuals, we  
362 found at least 13% of positive individuals still testing positive after 10 days, however,  
363 most of these were negative by Day 14 (**Figure 6C**). No difference in the rate of viral  
364 clearance in males versus females was observed. Importantly, only 42/32,906 samples  
365 generated an inconclusive result (0.13%) after triplicate repeats, reflecting both the  
366 robustness of the test and the quality of the samples submitted for testing.

367 To compare the two readouts used, namely the fluorescence versus an endpoint  
368 color determination, a blinded study was performed using 3,654 (~10% of total  
369 specimens processed) samples collected from 18 January 2022 to 4 February 2022.  
370 Without prior knowledge of the results (157 positives, 3,486 negatives, and 11  
371 inconclusives), the endpoint color readout was scored by 3 different operators, taking into  
372 consideration both COVID and actin reactions (**Table 2**). A strong agreement between  
373 the two readout methods was observed with a yellow color (positive) corresponding to a  
374 fast amplification and pink/orange shaded as negative ( $Tt > 26$  minutes or N/A). The six  
375 samples that were not detected by eye, were orange shaded and corresponded with late Tt  
376 values, representing low viral loads or at the limit of detection of the test. This

377 demonstrates the reliability of the visual inspection method and the ability to use  
378 colorimetric RT-LAMP for simplified diagnostic workflows.

379

380

## 381 **Discussion**

382 The goals of the present study were to develop a simple, rapid, and robust SARS-CoV-2  
383 workflow for saliva testing and implement the method for workplace surveillance where  
384 frequent testing of asymptomatic individuals is required to prevent transmission.

385       While several saliva-based approaches have been demonstrated for the detection  
386 of SARS-CoV-2 using LAMP [8, 14, 30, 31, 35, 37-41], including extraction-free or  
387 direct protocols [13, 30, 35, 37, 38, 40, 42, 43], no gold standard method exists. We  
388 focused on the development of a simple and improved sample preparation protocol  
389 compatible with this complex sample and downstream LAMP reactions. We examined  
390 supernatant and sediment fractions which naturally form within minutes of collection in a  
391 crude saliva specimen and determined that the virus is present and easily detectable in  
392 both, circumventing the need for a mixing step prior to sampling. Following collection,  
393 the virus is known to be stable in saliva for extended periods of time at elevated  
394 temperatures without the addition of preservatives [18, 44, 45]. However, once RNA is  
395 released from the viral envelope, we found that it is rapidly degraded if not protected.  
396 This is likely due to the high level of endogenous RNases in human saliva [46, 47]. In the  
397 extraction-free method described in this study, 95°C heating is used to disassemble the  
398 viral particle and release RNA as well as denature and inactivate some of the RNases in

399 the presence of a buffer containing a TCEP/EDTA mixture. TCEP is a reducing reagent  
400 which abolishes the activity of RNases via the reduction of disulfide bonds present in the  
401 enzyme, while EDTA chelates the divalent cations required for nuclease activity. The  
402 non-ionic surfactants Tween 20 and Triton X-100 have also been used to help disrupt the  
403 viral envelope and release RNA upstream of RT-LAMP [35]. However, we observed a  
404 rapid degradation of viral RNA and failure to detect virus when positive saliva samples  
405 were incubated at room temperature for 5-10 minutes in buffer containing Tween 20 and  
406 Triton X-100 (data not shown). Indeed Tween-20 and Triton X-100, used in the range of  
407 0.1-2.0%, have been reported to increase human RNase activity [46]. We screened a  
408 panel of surfactants (data not shown) and discovered that Pluronic F-68 did not enhance  
409 the endogenous RNase activity present in saliva samples and demonstrated that the  
410 addition of 0.2% Pluronic F-68 to the sample preparation buffer increased the sensitivity  
411 of the RT-LAMP assay. Pluronic F-68 is an environmentally friendly [48], non-ionic  
412 detergent, commonly used to reduce foaming in stirred cultures and reduce cell  
413 attachment to glass. Detergents dissolve the lipid bilayer by forming a micelle, a process  
414 that depends on temperature and the critical micelle concentration (CMC). While Triton  
415 X-100 has a low CMC of ~0.02% (0.02g/dL) at room temperature, Pluronic F-68 has a  
416 substantially higher CMC of 10g/dL at 20°C, but a much lower one at a higher  
417 temperature 0.5g/dL at 50°C [16, 49]. The temperature-dependent CMC of Pluronic F-68  
418 may maintain the integrity of the virus at low temperature while the RNase activity is still  
419 high and subsequently facilitate the release of RNA during the heating step when the  
420 RNase activity is lower.

421           The constituents of saliva vary significantly both within and between individuals  
422 and are subject to collection method, hydration, and circadian rhythms [50]. Saliva has a  
423 pH normal range of 6.2-7.6 [51]. Colorimetric LAMP uses the pH-sensitive dye phenol  
424 red which turns from pink/red to yellow at pH 6.8 and lower, following the generation of  
425 hydrogen ions resulting from amplification of the target [52-54]. Low pH saliva can  
426 cause reactions to instantaneously change to yellow pre-amplification and, if not noted,  
427 will result in a false positive determination [29, 36]. In one study, 7% of saliva samples  
428 tested triggered a color change without amplification [11], and in another 15% of  
429 specimens showed a discordant color output when compared with an agarose gel  
430 electrophoresis readout [30]. In the present study we demonstrated the robustness of the  
431 lysis system when challenged with more than 1670 spiked crude saliva samples, with  
432 only 0.13% of samples invalidated due to a color change pre-amplification. For these  
433 highly acidic samples, the addition of sodium hydroxide, to a final concentration of  
434 30mM, usually corrected the pre-amplification color to pink and enabled actin detection  
435 and validation of the corresponding COVID test (data not shown). Since low pH saliva  
436 was usually associated with a particular individual, we found it simpler to inform the  
437 donor and request an adjustment to their collection method, such as providing a sample at  
438 a different time of the day or rinsing the mouth with water briefly before collection. This  
439 behavioral change improved the quality of the sample and substantially decreased the  
440 inconclusive rate. We also discovered that pooling saliva prior to testing can be beneficial  
441 in cases where a particular specimen is problematic due to low pH, color, or viscosity, or  
442 has substances that interfere with nucleic acid amplification. Pooling saliva for large-  
443 scale surveillance programs has proven to be a highly cost-effective strategy [12, 17, 38,

444 55, 56] and used successfully in schools and universities to routinely identify  
445 asymptomatic individuals in pool sizes comprised of 24 samples [17]. These studies  
446 include an RNA purification step and RT-qPCR for detection. We demonstrate here the  
447 successful detection of a single positive specimen in a pool size of 16 samples using the  
448 extraction-free RT-LAMP method.

449 To further determine the efficiency of the color readout upon visual inspection,  
450 the color output of 3654 samples was scored by 3 different operators without knowledge  
451 of the corresponding fluorescence readout. The high concordance between the results  
452 obtained by the different operators and their overall agreement with the real-time  
453 fluorescent readouts highlights the versatility and robustness of the RT-LAMP method.  
454 The visual readout option does not require sophisticated equipment or highly skilled  
455 personnel and is well suited to a low-resource or field setting. Use of a colorimetric signal  
456 also enables absorbance-based measurements of color (Color SARS-CoV-2 RT-LAMP  
457 Diagnostic Assay) and simple at home testing (Lucira™ COVID-19 Test Kit, Lucira  
458 Health), expanding the utility of RT-LAMP to be compatible with laboratories or settings  
459 without fluorescence instruments.

460 For reporting purposes, we used the fluorescent readout with a cutoff  $T_t < 26$   
461 minutes to determine positivity. We noted that in the case of positive samples, if the  
462 initial  $T_t$  is less than 11 minutes, all triplicate samples tested positive with a similar  $T_t$   
463 value. More variance was observed in replicate testing at higher  $T_t$  values (data not  
464 shown). On a few occasions, either at the onset or end of infection, an inconclusive  
465 determination was made after the initial test scored positive but not all replicates tested  
466 positive. This likely reflected a low viral load present. We also noted more variance in

467 the testing outcome late in infection with the same individual testing positive after  
468 receiving one or more consecutive negative test results, likely due to low levels of virus  
469 present in the saliva. This is consistent with the findings in our validation study showing  
470 that a viral load higher than 40 copies/ $\mu$ L of saliva can be detected confidently but  
471 samples with a lower viral titer would less likely be detected. In the clinical validation  
472 studies, overall sensitivity of 97% and specificity of 100% were achieved.

473 The high performance of the extraction-free RT-LAMP method was also  
474 demonstrated when compared with RT-qPCR using purified RNA as input material. Only  
475 samples with very late C<sub>q</sub> values (greater than 34) in RT-qPCR, failed to amplify in  
476 extraction-free RT-LAMP. High C<sub>q</sub> values (>34) in RT-qPCR have been shown to  
477 correlate with low viral loads (<100-1,000 copies/ $\mu$ L) and these individuals are rarely  
478 infectious or not infectious [41].

479 In an analysis of almost 100,000 individuals in the United States, more males  
480 tested positive for SARS-CoV-2 than females [57]. Viral loads have also been reported to  
481 be ~ 10 times higher in males compared to females, as well as a slower viral clearance in  
482 males [30]. In our study, involving more than 30,000 saliva samples from 406 males,  
483 341 females and 8 gender not indicated, we did not observe a significant difference in  
484 positivity rates between genders, likely due to the small number of cases identified (47  
485 males and 35 females). Interestingly, we found a higher viral load in samples from males,  
486 however, clearance rates did not differ between males and females. At 10 days after the  
487 initial positive test, we found 13% of positive individuals still testing positive with most  
488 of them testing negative for viral RNA by day 14. This may be a general trend for saliva-  
489 based COVID diagnostics since in a mass screening program in Slovenia, the viral load

490 in saliva peaked within the first week of infection with most individuals testing negative  
491 within 2 weeks after the first positive RT-LAMP test [38].

492         During our surveillance, the peaks in new cases largely following a holiday period  
493 as has been reported in other testing programs [17], and generally mirrored the  
494 epidemiological data from Massachusetts and nationwide. The rapid testing time allowed  
495 the identification and isolation of positive individuals within hours of sample collection  
496 and resulted in low workplace transmission. The simple saliva workflow described  
497 requires minimal sample manipulation and is applicable to a variety of settings, budgets,  
498 scales of testing, and range of available infrastructure. It enables widespread and frequent  
499 diagnostic testing which is key to preventing the spread of SARS-CoV-2 infection in the  
500 population.

501

502

## 503 **Acknowledgments**

504 This work was supported by New England Biolabs. We thank Amit Sinha and Sofia  
505 Roitman for participation in the blinded reading of colorimetric data, and Nicole Nichols  
506 for helpful discussions, Lori Tonello for organizing the many volunteers involved in  
507 saliva kit assembly, Tasha José for the diagrammatic representation of the workflow, Dr.  
508 Gyorgy Abel for medical oversight, Lea Antonopoulos for reagents, and Tom Evans for  
509 guidance and feedback on the manuscript.

510 **Tables**

511 **Table 1. Direct comparison of SARS-CoV-2 detection using RT-qPCR and**  
 512 **extraction-free RT-LAMP.**  
 513

Samples	Purified Saliva RNA						Saliva Lysate	
	RT-qPCR N1 (Cq)		RT-qPCR N2 (Cq)		COVID LAMP (Tt)		COVID LAMP (Tt)	
<b>1</b>	24.8	24.8	24.2	24.3	8.9	8.9	8.7	8.6
<b>2</b>	26.2	26.3	25.8	25.8	9.9	9.9	9.8	10.1
<b>3</b>	27.3	27.2	26.9	27.0	8.5	8.4	10.7	10.3
<b>4</b>	28.6	28.7	28.2	28.2	9.5	9.6	9.4	9.4
<b>5</b>	30.1	30.2	29.8	29.8	9.2	8.9	10.7	10.3
<b>6</b>	31.6	31.7	31.1	31.1	9.4	9.2	13.3	11.5
<b>7</b>	31.7	32.0	31.2	31.6	10.3	9.8	11.3	11.0
<b>8</b>	32.0	32.0	31.3	31.3	9.5	9.6	12.0	11.9
<b>9</b>	32.9	33.3	36.1	36.5	12.1	12.0	13.6	13.6
<b>10</b>	34.3	34.5	33.4	34.0	10.3	10.9	10.6	11.6
<b>11</b>	34.7	34.7	N/A	N/A	14.0	13.3	16.5	14.7
<b>12</b>	35.3	35.5	35.4	35.2	12.0	11.7	22.9	N/A
<b>13</b>	37.5	N/A	N/A	N/A	N/A	N/A	16.4	N/A
<b>14</b>	37.8	37.5	37.9	38.3	13.8	28.4	N/A	N/A
<b>15</b>	38.4	38.1	N/A	N/A	N/A	19.8	N/A	N/A
<b>16</b>	38.8	39.1	N/A	N/A	N/A	N/A	N/A	N/A

514 No amplification is denoted N/A.  
 515



516 **Table 2. Comparison of the two assay readouts: fluorescence versus color**  
 517 **assessment.**  
 518

		<b>Positive</b>	<b>Negative</b>	<b>Inconclusive</b>
<b>Fluorescence</b>	<b>COVID Tt</b>	≤ 26 min	> 26 min	> 26 min or N/A
	<b>Actin Tt</b>	≤ 26 min	≤ 26 min	> 26 min or N/A
	<b>Sample Number</b>	157 (4.3%)	3486 (95.4%)	11 (0.3%)
<hr/>				
<b>Color</b>	<b>COVID</b>	Yellow	Pink/Orange	Pink/Orange
	<b>Actin</b>	Yellow	Yellow	Pink/Orange
	<b>Operator 1</b>	149 (4.1%)	3497 (95.7%)	8 (0.2%)
	<b>Operator 2</b>	152 (4.2%)	3491 (95.5%)	11 (0.3%)
	<b>Operator 3</b>	152 (4.2%)	3496 (95.7%)	6 (0.2%)

519 A blinded study was performed on 3,654 samples using two readouts, namely fluorescence and  
 520 endpoint color. The endpoint color readout was scored by 3 different operators. The number of  
 521 samples (and percent of total) scored as positive, negative, or inconclusive are shown.

## 522 **Figure Legends**

523 **Figure 1. The effects of the detergent Pluronic F68 and heat treatment on viral**  
524 **detection in saliva. (A)** Contrived saliva samples were processed in SLB with or without  
525 detergent followed by heat treatment (95°C for 5 min). Samples were spiked with 10-40  
526 copies of virus / $\mu$ L (6 replicates). Both real-time fluorescence (Tt value) and colorimetric  
527 (pink/negative, yellow/positive) readouts were obtained for each sample. The scanned  
528 image of the post-amplification plate (COVID LAMP and actin LAMP) is shown with  
529 overlaid Tt values. **(B)** Contrived samples spiked with 2-10,000 viral copies/ $\mu$ L, were  
530 processed in triplicate using either 75°C for 15 min, 85°C for 10 min, 95°C for 5 min or  
531 no heat. The scanned image of the post amplification plate (COVID LAMP) is shown  
532 with overlaid Tt values. **(C)** The plot of Tt values from (B). No amplification is denoted  
533 N/A.

534  
535 **Figure 2. Impact of saliva input on diagnostic sensitivity. (A)** Supernatant and  
536 sediment from positive saliva and corresponding purified RNAs were evaluated in  
537 COVID and actin LAMP reactions. **(B)** Different volumes of positive saliva ranging from  
538 0.25  $\mu$ L to 6  $\mu$ L were used in COVID and actin LAMP reactions. LAMP Tt values were  
539 plotted. All samples were tested in triplicate.

540

541 **Figure 3. Performance of the extraction-free RT-LAMP method using saliva**  
542 **collected from a large cohort of individuals.** A total of 1670 negative saliva samples  
543 were each spiked with 50 copies/ $\mu$ L of virus and evaluated in COVID and actin LAMP  
544 reactions. Histogram depicting the distribution of Tt values from COVID (A) and actin  
545 (B) LAMP reactions are shown. (C) Plotted COVID and actin Tt values (blue circles) and  
546 linear regression line with the value of R squared (Pearson product-moment correlation  
547 coefficient) and p-value. No amplification is assigned a Tt value of 36 for plotting  
548 purposes.

549

550 **Figure 4. The limit of detection.** Two saliva pools from different negative individuals  
551 (n=10) were spiked with 10-40 copies of virus / $\mu$ L. Three LAMP reactions were  
552 performed using 20 different replicate samples. The Tt values derived from 60 reactions  
553 are plotted. No amplification is assigned a Tt value of 36 for plotting purposes.

554

555 **Figure 5. Diagrammatic representation of the extraction-free saliva SARS-CoV-2**  
556 **RT-LAMP workflow process from specimen collection to testing and result**  
557 **reporting.**

558

559 **Figure 6. Using extraction-free saliva RT-LAMP for workplace surveillance. (A)** The  
560 number of samples tested each week from 4/9/2021 until 2/9/2022 (blue bars) and new  
561 positive cases identified (red line). **(B)** Distribution of initial COVID Tt values obtained  
562 from male, female and individuals with gender not indicated (N/A). Average Tt values  
563 for first positive cases (Y-axis) based on gender (columns) and submitter age (X-axis),  
564 median (line), quartile boundaries (boxes), and 1.5x the interquartile range (whiskers) are  
565 displayed. **(C)** Testing history of all positive cases from April 2021 to February 2022. For  
566 each individual, negative (grey), positive (dark red, first detected; light red, subsequent  
567 detection), or inconclusive (green) results are indicated.

568

## 569 **References**

- 570 1. Wyllie AL, Fournier J, Casanovas-Massana A, Campbell M, Tokuyama M,  
571 Vijayakumar P, et al. Saliva or Nasopharyngeal Swab Specimens for Detection of SARS-  
572 CoV-2. *N Engl J Med.* 2020;383(13):1283-6. Epub 2020/08/29. doi:  
573 10.1056/NEJMc2016359. PubMed PMID: 32857487; PubMed Central PMCID:  
574 PMCPMC7484747.
- 575 2. Kapoor P, Chowdhry A, Kharbanda OP, Bablani Popli D, Gautam K, Saini V.  
576 Exploring salivary diagnostics in COVID-19: a scoping review and research suggestions.  
577 *BDJ Open.* 2021;7(1):8. Epub 2021/01/28. doi: 10.1038/s41405-021-00064-7. PubMed  
578 PMID: 33500385; PubMed Central PMCID: PMCPMC7836040.
- 579 3. Tan SH, Allicock O, Armstrong-Hough M, Wyllie AL. Saliva as a gold-standard  
580 sample for SARS-CoV-2 detection. *Lancet Respir Med.* 2021;9(6):562-4. Epub  
581 2021/04/23. doi: 10.1016/S2213-2600(21)00178-8. PubMed PMID: 33887248; PubMed  
582 Central PMCID: PMCPMC8055204 authors.
- 583 4. Williams E, Bond K, Zhang B, Putland M, Williamson DA. Saliva as a  
584 Noninvasive Specimen for Detection of SARS-CoV-2. *J Clin Microbiol.* 2020;58(8).  
585 Epub 2020/04/23. doi: 10.1128/JCM.00776-20. PubMed PMID: 32317257; PubMed  
586 Central PMCID: PMCPMC7383524.
- 587 5. Pasomsub E, Watcharananan SP, Boonyawat K, Janchompoo P, Wongtabtim G,  
588 Sukswan W, et al. Saliva sample as a non-invasive specimen for the diagnosis of  
589 coronavirus disease 2019: a cross-sectional study. *Clin Microbiol Infect.* 2021;27(2):285  
590 e1- e4. Epub 2020/05/19. doi: 10.1016/j.cmi.2020.05.001. PubMed PMID: 32422408;  
591 PubMed Central PMCID: PMCPMC7227531.
- 592 6. Butler-Laporte G, Lawandi A, Schiller I, Yao M, Dendukuri N, McDonald EG, et  
593 al. Comparison of Saliva and Nasopharyngeal Swab Nucleic Acid Amplification Testing  
594 for Detection of SARS-CoV-2: A Systematic Review and Meta-analysis. *JAMA Intern  
595 Med.* 2021;181(3):353-60. Epub 2021/01/16. doi: 10.1001/jamainternmed.2020.8876.  
596 PubMed PMID: 33449069; PubMed Central PMCID: PMCPMC7811189.
- 597 7. Bastos ML, Perlman-Arrow S, Menzies D, Campbell JR. The Sensitivity and  
598 Costs of Testing for SARS-CoV-2 Infection With Saliva Versus Nasopharyngeal Swabs :  
599 A Systematic Review and Meta-analysis. *Ann Intern Med.* 2021;174(4):501-10. Epub  
600 2021/01/12. doi: 10.7326/M20-6569. PubMed PMID: 33428446; PubMed Central  
601 PMCID: PMCPMC7822569.
- 602 8. To KK, Tsang OT, Yip CC, Chan KH, Wu TC, Chan JM, et al. Consistent  
603 Detection of 2019 Novel Coronavirus in Saliva. *Clin Infect Dis.* 2020;71(15):841-3. Epub  
604 2020/02/13. doi: 10.1093/cid/ciaa149. PubMed PMID: 32047895; PubMed Central  
605 PMCID: PMCPMC7108139.

- 606 9. Azzi L, Carcano G, Gianfagna F, Grossi P, Gasperina DD, Genoni A, et al. Saliva  
607 is a reliable tool to detect SARS-CoV-2. *J Infect.* 2020;81(1):e45-e50. Epub 2020/04/17.  
608 doi: 10.1016/j.jinf.2020.04.005. PubMed PMID: 32298676; PubMed Central PMCID:  
609 PMCPMC7194805.
- 610 10. Yokota I, Shane PY, Okada K, Unoki Y, Yang Y, Inao T, et al. Mass Screening of  
611 Asymptomatic Persons for Severe Acute Respiratory Syndrome Coronavirus 2 Using  
612 Saliva. *Clin Infect Dis.* 2021;73(3):e559-e65. Epub 2020/09/26. doi:  
613 10.1093/cid/ciaa1388. PubMed PMID: 32976596; PubMed Central PMCID:  
614 PMCPMC7543374.
- 615 11. Yang Q, Meyerson NR, Clark SK, Paige CL, Fattor WT, Gilchrist AR, et al.  
616 Saliva TwoStep for rapid detection of asymptomatic SARS-CoV-2 carriers. *Elife.*  
617 2021;10. Epub 2021/03/30. doi: 10.7554/eLife.65113. PubMed PMID: 33779548;  
618 PubMed Central PMCID: PMCPMC8057811.
- 619 12. Giron-Perez DA, Ruiz-Manzano RA, Benitez-Trinidad AB, Ventura-Ramon GH,  
620 Covantes-Rosales CE, Ojeda-Duran AJ, et al. Saliva Pooling Strategy for the Large-Scale  
621 Detection of SARS-CoV-2, Through Working-Groups Testing of Asymptomatic Subjects  
622 for Potential Applications in Different Workplaces. *J Occup Environ Med.*  
623 2021;63(7):541-7. Epub 2021/02/18. doi: 10.1097/JOM.0000000000002176. PubMed  
624 PMID: 33596026; PubMed Central PMCID: PMCPMC8247539 Covantes-Rosales,  
625 Ojeda-Duran, Mercado-Salgado, Toledo-Ibarra, and Diaz-Resendiz have no  
626 relationships/conditions/circumstances that present potential conflict of interest.
- 627 13. Kundrod KA, Natoli ME, Chang MM, Smith CA, Paul S, Ogoe D, et al. Sample-  
628 to-answer, extraction-free, real-time RT-LAMP test for SARS-CoV-2 in nasopharyngeal,  
629 nasal, and saliva samples: Implications and use for surveillance testing. *PLoS One.*  
630 2022;17(2):e0264130. Epub 2022/02/26. doi: 10.1371/journal.pone.0264130. PubMed  
631 PMID: 35213596; PubMed Central PMCID: PMCPMC8880874.
- 632 14. Nagura-Ikeda M, Imai K, Tabata S, Miyoshi K, Murahara N, Mizuno T, et al.  
633 Clinical Evaluation of Self-Collected Saliva by Quantitative Reverse Transcription-PCR  
634 (RT-qPCR), Direct RT-qPCR, Reverse Transcription-Loop-Mediated Isothermal  
635 Amplification, and a Rapid Antigen Test To Diagnose COVID-19. *J Clin Microbiol.*  
636 2020;58(9). Epub 2020/07/09. doi: 10.1128/JCM.01438-20. PubMed PMID: 32636214;  
637 PubMed Central PMCID: PMCPMC7448663.
- 638 15. Rao M, Rashid FA, Sabri F, Jamil NN, Seradja V, Abdullah NA, et al. COVID-19  
639 screening test by using random oropharyngeal saliva. *J Med Virol.* 2021;93(4):2461-6.  
640 Epub 2021/01/05. doi: 10.1002/jmv.26773. PubMed PMID: 33393672; PubMed Central  
641 PMCID: PMCPMC7986796.
- 642 16. He X, Lau EHY, Wu P, Deng X, Wang J, Hao X, et al. Temporal dynamics in  
643 viral shedding and transmissibility of COVID-19. *Nat Med.* 2020;26(5):672-5. Epub  
644 2020/04/17. doi: 10.1038/s41591-020-0869-5. PubMed PMID: 32296168.

- 645 17. Mendoza RP, Bi C, Cheng HT, Gabutan E, Pagaspas GJ, Khan N, et al.  
646 Implementation of a pooled surveillance testing program for asymptomatic SARS-CoV-2  
647 infections in K-12 schools and universities. *EClinicalMedicine*. 2021;38:101028. Epub  
648 2021/07/27. doi: 10.1016/j.eclinm.2021.101028. PubMed PMID: 34308321; PubMed  
649 Central PMCID: PMC8286123.
- 650 18. Vogels CBF, Watkins AE, Harden CA, Brackney DE, Shafer J, Wang J, et al.  
651 SalivaDirect: A simplified and flexible platform to enhance SARS-CoV-2 testing  
652 capacity. *Med (N Y)*. 2021;2(3):263-80 e6. Epub 2021/02/02. doi:  
653 10.1016/j.medj.2020.12.010. PubMed PMID: 33521748; PubMed Central PMCID:  
654 PMC7836249.
- 655 19. Laboratory RCG. ACCELERATED EMERGENCY USE AUTHORIZATION  
656 (EUA) SUMMARY SARS-CoV-2 ASSAY.
- 657 20. Notomi T, Okayama H, Masubuchi H, Yonekawa T, Watanabe K, Amino N, et al.  
658 Loop-mediated isothermal amplification of DNA. *Nucleic Acids Res*. 2000;28(12):E63.  
659 Epub 2000/06/28. doi: 10.1093/nar/28.12.e63. PubMed PMID: 10871386; PubMed  
660 Central PMCID: PMC102748.
- 661 21. Notomi T, Mori Y, Tomita N, Kanda H. Loop-mediated isothermal amplification  
662 (LAMP): principle, features, and future prospects. *J Microbiol*. 2015;53(1):1-5. Epub  
663 2015/01/06. doi: 10.1007/s12275-015-4656-9. PubMed PMID: 25557475.
- 664 22. Nagamine K, Watanabe K, Ohtsuka K, Hase T, Notomi T. Loop-mediated  
665 isothermal amplification reaction using a nondenatured template. *Clin Chem*.  
666 2001;47(9):1742-3. Epub 2001/08/22. PubMed PMID: 11514425.
- 667 23. Poole CB, Ettwiller L, Tanner NA, Evans TC, Jr., Wanji S, Carlow CK. Genome  
668 Filtering for New DNA Biomarkers of *Loa loa* Infection Suitable for Loop-Mediated  
669 Isothermal Amplification. *PLoS One*. 2015;10(9):e0139286. Epub 2015/09/29. doi:  
670 10.1371/journal.pone.0139286. PubMed PMID: 26414073; PubMed Central PMCID:  
671 PMC4586141.
- 672 24. Poole CB, Sinha A, Ettwiller L, Apone L, McKay K, Panchapakesa V, et al. In  
673 Silico Identification of Novel Biomarkers and Development of New Rapid Diagnostic  
674 Tests for the Filarial Parasites *Mansonella perstans* and *Mansonella ozzardi*. *Sci Rep*.  
675 2019;9(1):10275. Epub 2019/07/18. doi: 10.1038/s41598-019-46550-9. PubMed PMID:  
676 31311985; PubMed Central PMCID: PMC6635353.
- 677 25. Poole CB, Tanner NA, Zhang Y, Evans TC, Jr., Carlow CK. Diagnosis of brugian  
678 filariasis by loop-mediated isothermal amplification. *PLoS Negl Trop Dis*.  
679 2012;6(12):e1948. Epub 2012/12/29. doi: 10.1371/journal.pntd.0001948. PubMed PMID:  
680 23272258; PubMed Central PMCID: PMC3521703.
- 681 26. Amambo GN, Abong RA, Fombad FF, Njouendou AJ, Nietcho F, Beng AA, et al.  
682 Validation of loop-mediated isothermal amplification for the detection of *Loa loa*  
683 infection in *Chrysops* spp in experimental and natural field conditions. *Parasit Vectors*.

- 684 2021;14(1):19. Epub 2021/01/08. doi: 10.1186/s13071-020-04506-3. PubMed PMID:  
685 33407819; PubMed Central PMCID: PMCPMC7788981.
- 686 27. Abong RA, Amambo GN, Hamid AA, Enow BA, Beng AA, Nietcho FN, et al.  
687 The Mbam drainage system and onchocerciasis transmission post ivermectin mass drug  
688 administration (MDA) campaign, Cameroon. *PLoS Negl Trop Dis*. 2021;15(1):e0008926.  
689 Epub 2021/01/20. doi: 10.1371/journal.pntd.0008926. PubMed PMID: 33465080;  
690 PubMed Central PMCID: PMCPMC7815102.
- 691 28. Ahn SJ, Baek YH, Lloren KKS, Choi WS, Jeong JH, Antigua KJC, et al. Rapid  
692 and simple colorimetric detection of multiple influenza viruses infecting humans using a  
693 reverse transcriptional loop-mediated isothermal amplification (RT-LAMP) diagnostic  
694 platform. *BMC Infect Dis*. 2019;19(1):676. Epub 2019/08/03. doi: 10.1186/s12879-019-  
695 4277-8. PubMed PMID: 31370782; PubMed Central PMCID: PMCPMC6669974.
- 696 29. Bhadra S, Riedel TE, Lakhotia S, Tran ND, Ellington AD. High-Surety  
697 Isothermal Amplification and Detection of SARS-CoV-2. *mSphere*. 2021;6(3). Epub  
698 2021/05/21. doi: 10.1128/mSphere.00911-20. PubMed PMID: 34011690; PubMed  
699 Central PMCID: PMCPMC8265673.
- 700 30. Kobayashi GS, Brito LA, Moreira DP, Suzuki AM, Hsia GSP, Pimentel LF, et al.  
701 A Novel Saliva RT-LAMP Workflow for Rapid Identification of COVID-19 Cases and  
702 Restraining Viral Spread. *Diagnostics (Basel)*. 2021;11(8). Epub 2021/08/28. doi:  
703 10.3390/diagnostics11081400. PubMed PMID: 34441334; PubMed Central PMCID:  
704 PMCPMC8391450.
- 705 31. Toppings NB, Mohon AN, Lee Y, Kumar H, Lee D, Kapoor R, et al. A rapid  
706 near-patient detection system for SARS-CoV-2 using saliva. *Sci Rep*. 2021;11(1):13378.  
707 Epub 2021/06/30. doi: 10.1038/s41598-021-92677-z. PubMed PMID: 34183720;  
708 PubMed Central PMCID: PMCPMC8238998.
- 709 32. Han ET. Loop-mediated isothermal amplification test for the molecular diagnosis  
710 of malaria. *Expert Rev Mol Diagn*. 2013;13(2):205-18. Epub 2013/03/13. doi:  
711 10.1586/erm.12.144. PubMed PMID: 23477559.
- 712 33. Xu R, Cui B, Duan X, Zhang P, Zhou X, Yuan Q. Saliva: potential diagnostic  
713 value and transmission of 2019-nCoV. *Int J Oral Sci*. 2020;12(1):11. Epub 2020/04/18.  
714 doi: 10.1038/s41368-020-0080-z. PubMed PMID: 32300101; PubMed Central PMCID:  
715 PMCPMC7162686.
- 716 34. Batejat C, Grassin Q, Manuguerra JC, Leclercq I. Heat inactivation of the severe  
717 acute respiratory syndrome coronavirus 2. *J Biosaf Biosecur*. 2021;3(1):1-3. Epub  
718 2021/02/02. doi: 10.1016/j.jobb.2020.12.001. PubMed PMID: 33521591; PubMed  
719 Central PMCID: PMCPMC7825878.
- 720 35. Rabe BA, Cepko C. SARS-CoV-2 detection using isothermal amplification and a  
721 rapid, inexpensive protocol for sample inactivation and purification. *Proc Natl Acad Sci*



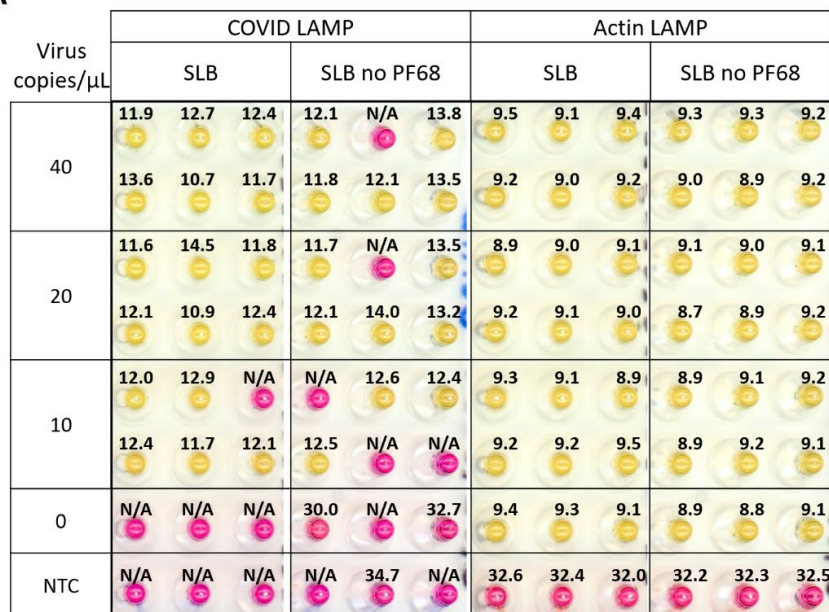
- 722 U S A. 2020;117(39):24450-8. Epub 2020/09/10. doi: 10.1073/pnas.2011221117.  
723 PubMed PMID: 32900935; PubMed Central PMCID: PMCPMC7533677.
- 724 36. Uribe-Alvarez C, Lam Q, Baldwin DA, Chernoff J. Low saliva pH can yield false  
725 positives results in simple RT-LAMP-based SARS-CoV-2 diagnostic tests. PLoS One.  
726 2021;16(5):e0250202. Epub 2021/05/06. doi: 10.1371/journal.pone.0250202. PubMed  
727 PMID: 33951060; PubMed Central PMCID: PMCPMC8099103.
- 728 37. Amaral C, Antunes W, Moe E, Duarte AG, Lima LMP, Santos C, et al. A  
729 molecular test based on RT-LAMP for rapid, sensitive and inexpensive colorimetric  
730 detection of SARS-CoV-2 in clinical samples. Sci Rep. 2021;11(1):16430. Epub  
731 2021/08/14. doi: 10.1038/s41598-021-95799-6. PubMed PMID: 34385527; PubMed  
732 Central PMCID: PMCPMC8361189.
- 733 38. Rajh E, Sket T, Praznik A, Susjan P, Smid A, Urbancic D, et al. Robust Saliva-  
734 Based RNA Extraction-Free One-Step Nucleic Acid Amplification Test for Mass SARS-  
735 CoV-2 Monitoring. Molecules. 2021;26(21). Epub 2021/11/14. doi:  
736 10.3390/molecules26216617. PubMed PMID: 34771026; PubMed Central PMCID:  
737 PMCPMC8588466.
- 738 39. Fowler VL, Armson B, Gonzales JL, Wise EL, Howson ELA, Vincent-Mistiaen  
739 Z, et al. A highly effective reverse-transcription loop-mediated isothermal amplification  
740 (RT-LAMP) assay for the rapid detection of SARS-CoV-2 infection. J Infect.  
741 2021;82(1):117-25. Epub 2020/12/04. doi: 10.1016/j.jinf.2020.10.039. PubMed PMID:  
742 33271166; PubMed Central PMCID: PMCPMC7703389.
- 743 40. Hayden A, Kuentzel M, Chittur SV. Rapid, Affordable, and Scalable SARS-CoV-  
744 2 Detection From Saliva. J Biomol Tech. 2021;32(3):148-57. Epub 2022/01/15. doi:  
745 10.7171/jbt.21-3203-010. PubMed PMID: 35027872; PubMed Central PMCID:  
746 PMCPMC8730515.
- 747 41. Huang X, Tang G, Ismail N, Wang X. Developing RT-LAMP assays for rapid  
748 diagnosis of SARS-CoV-2 in saliva. EBioMedicine. 2022;75:103736. Epub 2021/12/19.  
749 doi: 10.1016/j.ebiom.2021.103736. PubMed PMID: 34922321; PubMed Central PMCID:  
750 PMCPMC8674011.
- 751 42. Lalli MA, Langmade JS, Chen X, Fronick CC, Sawyer CS, Burcea LC, et al.  
752 Rapid and Extraction-Free Detection of SARS-CoV-2 from Saliva by Colorimetric  
753 Reverse-Transcription Loop-Mediated Isothermal Amplification. Clin Chem.  
754 2021;67(2):415-24. Epub 2020/10/25. doi: 10.1093/clinchem/hvaa267. PubMed PMID:  
755 33098427; PubMed Central PMCID: PMCPMC7665435.
- 756 43. Wei S, Kohl E, Djandji A, Morgan S, Whittier S, Mansukhani M, et al. Direct  
757 diagnostic testing of SARS-CoV-2 without the need for prior RNA extraction. Sci Rep.  
758 2021;11(1):2402. Epub 2021/01/30. doi: 10.1038/s41598-021-81487-y. PubMed PMID:  
759 33510181; PubMed Central PMCID: PMCPMC7844049.

- 760 44. Griesemer SB, Van Slyke G, Ehrbar D, Strle K, Yildirim T, Centurioni DA, et al.  
761 Evaluation of Specimen Types and Saliva Stabilization Solutions for SARS-CoV-2  
762 Testing. *J Clin Microbiol.* 2021;59(5). Epub 2021/03/07. doi: 10.1128/JCM.01418-20.  
763 PubMed PMID: 33674284; PubMed Central PMCID: PMC8091857.
- 764 45. Ott IM, Strine MS, Watkins AE, Boot M, Kalinich CC, Harden CA, et al.  
765 Stability of SARS-CoV-2 RNA in Nonsupplemented Saliva. *Emerg Infect Dis.*  
766 2021;27(4):1146-50. Epub 2021/03/24. doi: 10.3201/eid2704.204199. PubMed PMID:  
767 33754989; PubMed Central PMCID: PMC8007305.
- 768 46. Bender AT, Sullivan BP, Lillis L, Posner JD. Enzymatic and Chemical-Based  
769 Methods to Inactivate Endogenous Blood Ribonucleases for Nucleic Acid Diagnostics. *J*  
770 *Mol Diagn.* 2020;22(8):1030-40. Epub 2020/05/26. doi: 10.1016/j.jmoldx.2020.04.211.  
771 PubMed PMID: 32450280; PubMed Central PMCID: PMC807416074.
- 772 47. Bradbury S. Human Saliva as a Convenient Source of Ribonuclease. *Journal of*  
773 *cell science.* 1956;s3-97(39).
- 774 48. Hering I, Eilebrecht E, Parnham MJ, Gunday-Tureli N, Tureli AE, Weiler M, et  
775 al. Evaluation of potential environmental toxicity of polymeric nanomaterials and  
776 surfactants. *Environ Toxicol Pharmacol.* 2020;76:103353. Epub 2020/02/23. doi:  
777 10.1016/j.etap.2020.103353. PubMed PMID: 32086102.
- 778 49. Gyulai G, Magyar A, Rohonczy J, Orosz J, Yamasaki M, Bosze S, et al.  
779 Preparation and characterization of cationic Pluronic for surface modification and  
780 functionalization of polymeric drug delivery nanoparticles. *eXPRESS Polymer Letters.*  
781 2016;10(3):216-26. doi: 10.3144/expresspolymlett.2016.20.
- 782 50. Humphrey SP, Williamson RT. A review of saliva: normal composition, flow,  
783 and function. *J Prosthet Dent.* 2001;85(2):162-9. Epub 2001/02/24. doi:  
784 10.1067/mpr.2001.113778. PubMed PMID: 11208206.
- 785 51. Baliga S, Muglikar S, Kale R. Salivary pH: A diagnostic biomarker. *J Indian Soc*  
786 *Periodontol.* 2013;17(4):461-5. Epub 2013/11/01. doi: 10.4103/0972-124X.118317.  
787 PubMed PMID: 24174725; PubMed Central PMCID: PMC3800408.
- 788 52. Tanner NA, Zhang Y, Evans TC, Jr. Visual detection of isothermal nucleic acid  
789 amplification using pH-sensitive dyes. *Biotechniques.* 2015;58(2):59-68. Epub  
790 2015/02/06. doi: 10.2144/000114253. PubMed PMID: 25652028.
- 791 53. Zhang Y, Odiwuor N, Xiong J, Sun L, Nyaruaba RO, Wei H, et al. Rapid  
792 Molecular Detection of SARS-CoV-2 (COVID-19) Virus RNA Using Colorimetric  
793 LAMP. *medRxiv.* 2020. doi: <https://doi.org/10.1101/2020.02.26.20028373>.
- 794 54. Zhang Y, Ren G, Buss J, Barry AJ, Patton GC, Tanner NA. Enhancing  
795 colorimetric loop-mediated isothermal amplification speed and sensitivity with guanidine  
796 chloride. *Biotechniques.* 2020;69(3):178-85. Epub 2020/07/09. doi: 10.2144/btn-2020-  
797 0078. PubMed PMID: 32635743.

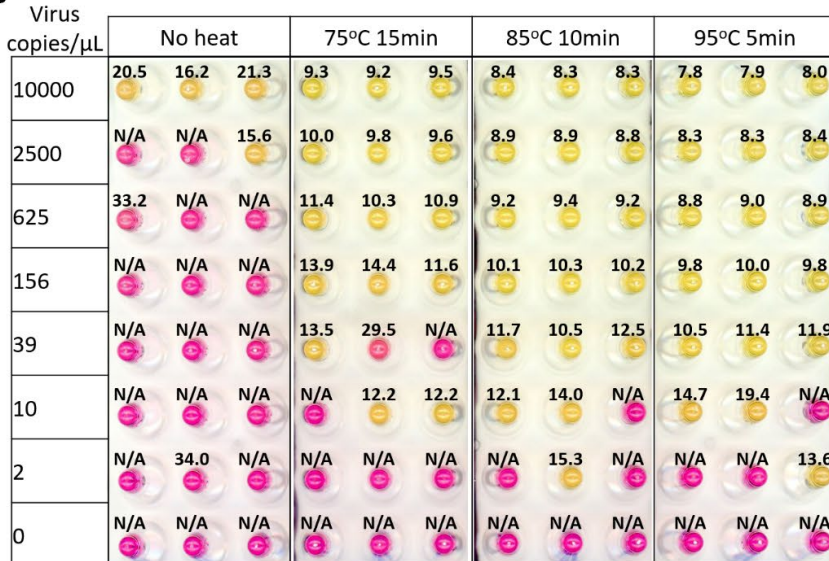
- 798 55. Barat B, Das S, De Giorgi V, Henderson DK, Kopka S, Lau AF, et al. Pooled  
799 Saliva Specimens for SARS-CoV-2 Testing. *J Clin Microbiol.* 2021;59(3). Epub  
800 2020/12/03. doi: 10.1128/JCM.02486-20. PubMed PMID: 33262219; PubMed Central  
801 PMCID: PMCPMC8106731.
- 802 56. Sun Q, Li J, Ren H, Pastor L, Loginova Y, Madej R, et al. Saliva as a testing  
803 specimen with or without pooling for SARS-CoV-2 detection by multiplex RT-PCR test.  
804 *PLoS One.* 2021;16(2):e0243183. Epub 2021/02/24. doi: 10.1371/journal.pone.0243183.  
805 PubMed PMID: 33621263; PubMed Central PMCID: PMCPMC7901781 PLOS ONE  
806 policies on sharing data and materials.
- 807 57. Vahidy FS, Pan AP, Ahnstedt H, Munshi Y, Choi HA, Tiruneh Y, et al. Sex  
808 differences in susceptibility, severity, and outcomes of coronavirus disease 2019: Cross-  
809 sectional analysis from a diverse US metropolitan area. *PLoS One.* 2021;16(1):e0245556.  
810 Epub 2021/01/14. doi: 10.1371/journal.pone.0245556. PubMed PMID: 33439908;  
811 PubMed Central PMCID: PMCPMC7806140.  
812

# Figure 1

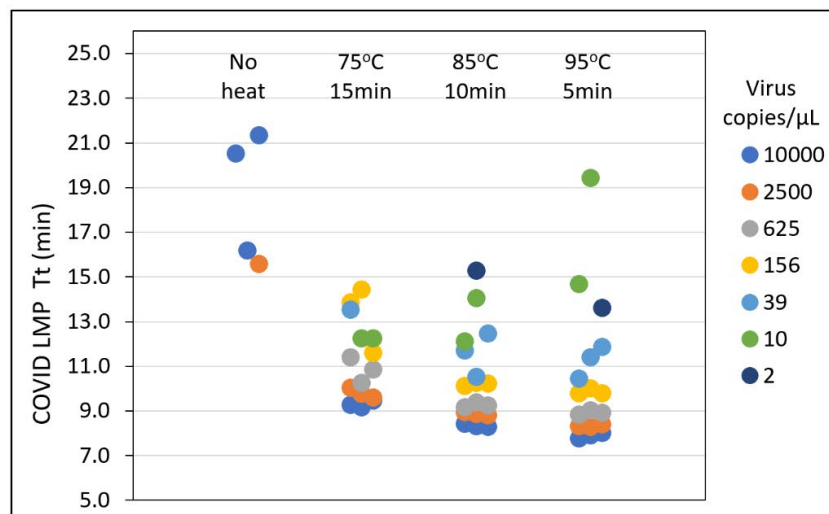
**A**



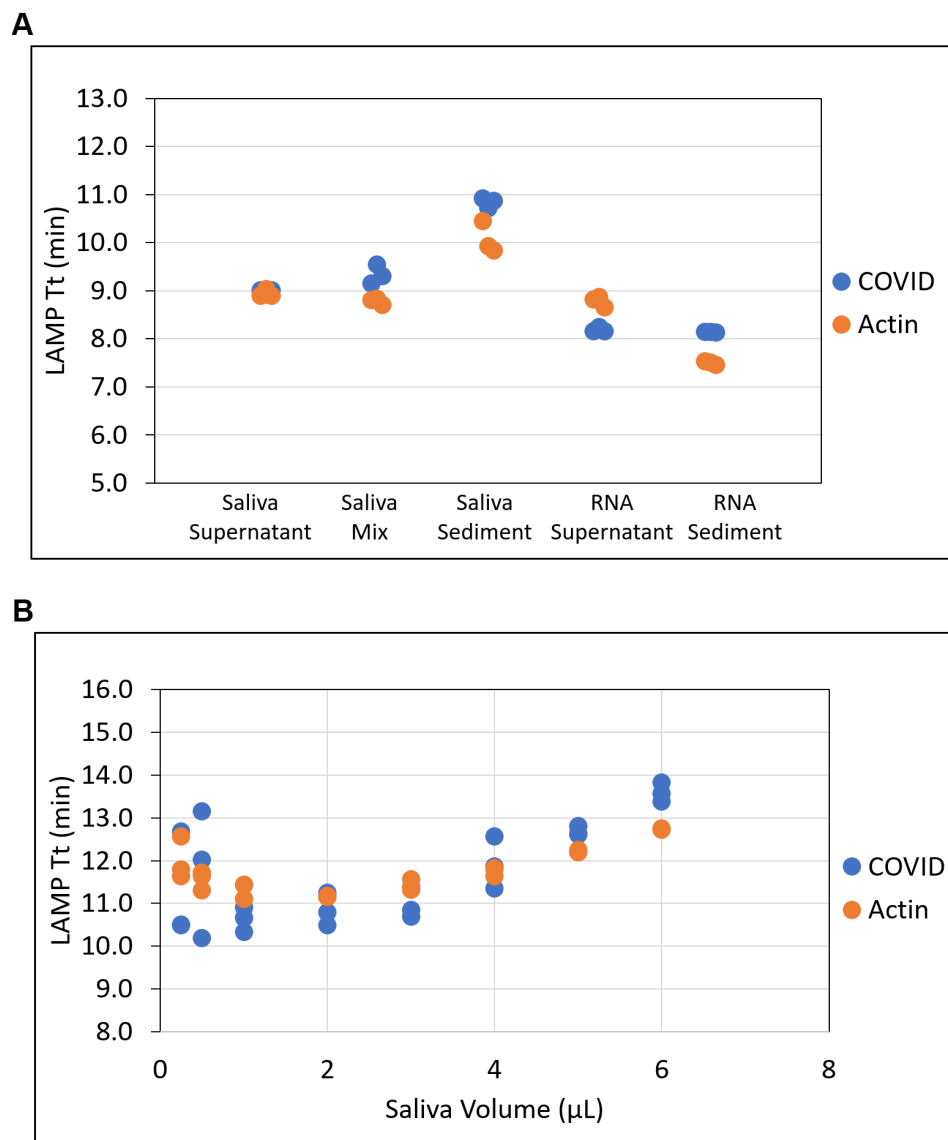
**B**



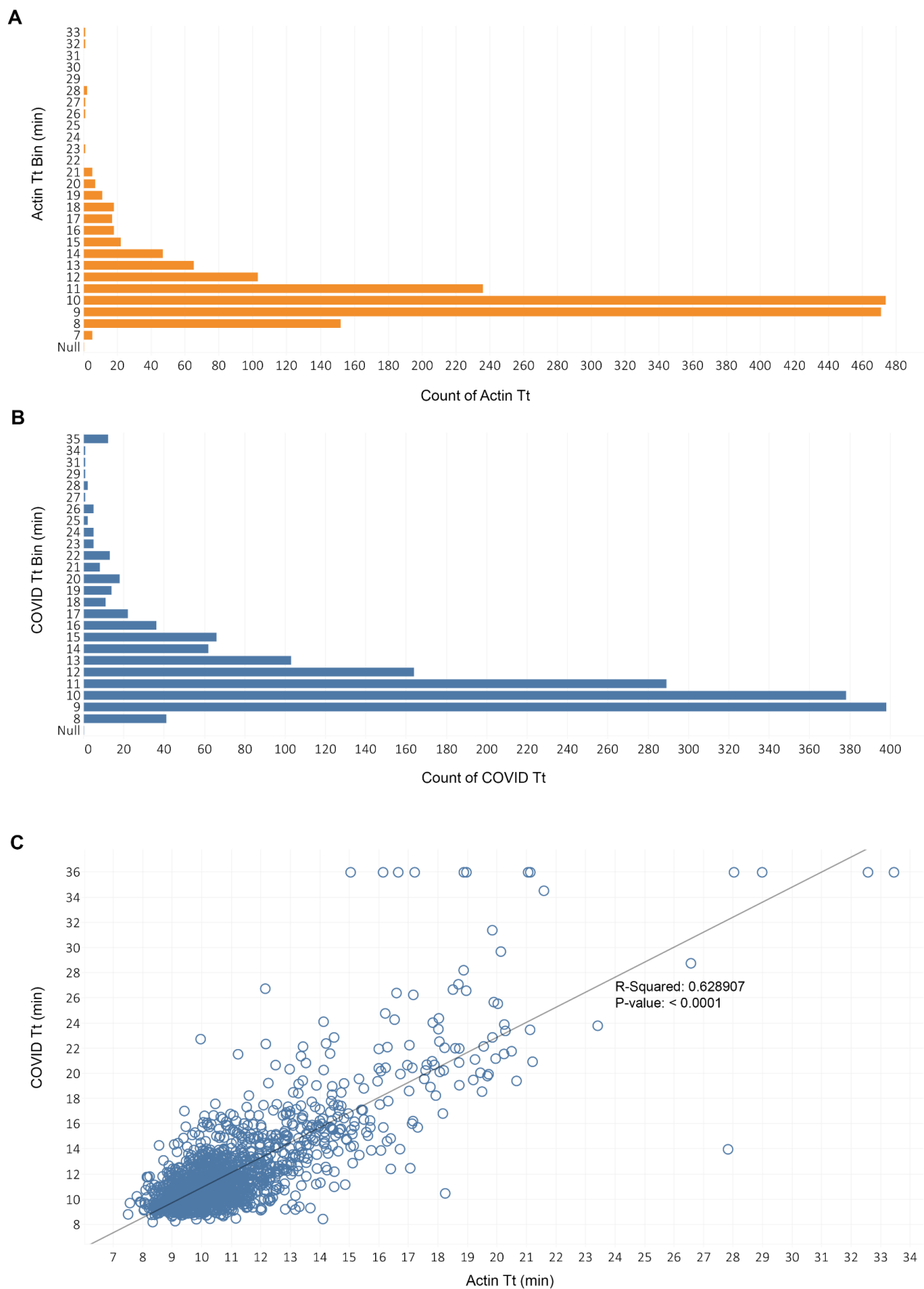
**C**



## Figure 2

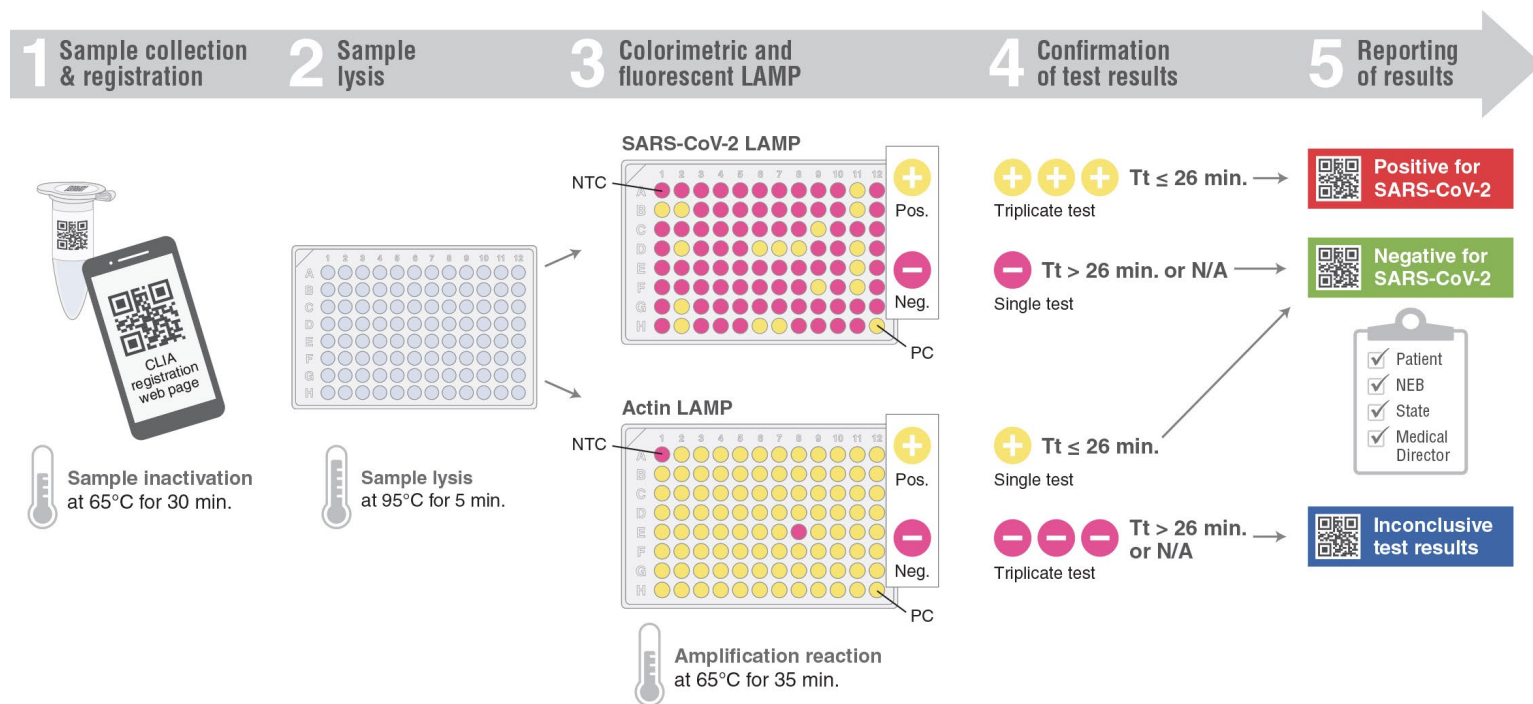


## Figure 3





## Figure 5





## Figure 6

