

# **Immortal time bias in older vs younger age groups: a simulation study with application to a population-based cohort of patients with colon cancer**

Sophie Pilleron, Camille Maringe, Eva JA Morris, Clémence Leyrat

---

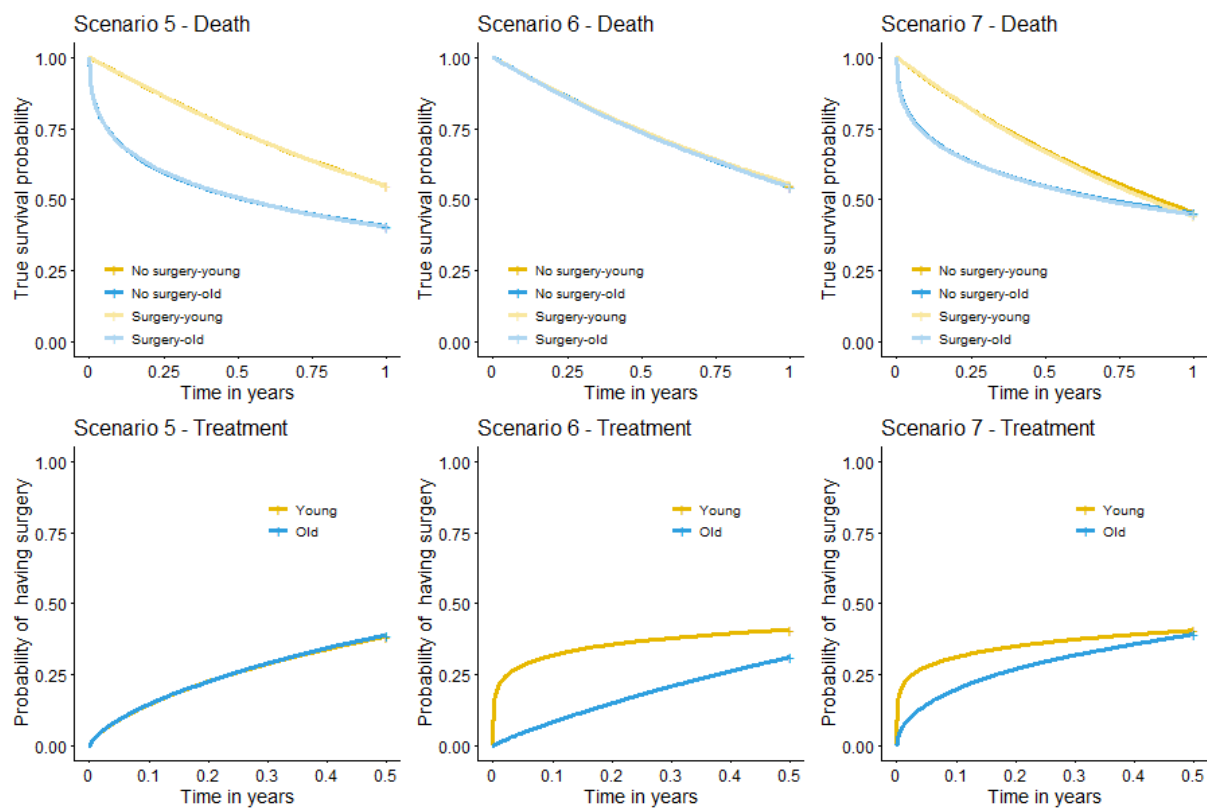
## **List of Figures**

Figure 1 – Scenarios 5-7

## **List of Tables**

Table 1 - Values of the shape and scale parameters of the Weibull distributions for the 7 scenarios

Table 2 – Difference in one-year overall survival based on the different methods and scenarios and its associated standard error (SE)



**Figure 1 – Scenarios 5-7**

**Table 1** - Values of the shape and scale parameters of the Weibull distributions for the 7 scenarios

Scenario	Treatment model				Survival model			
	Younger patients		Older patients		Younger patients		Older patients	
	Scale	Shape	Scale	Shape	Scale	Shape	Scale	Shape
1	0,8	0,7	0,8	0,7	0,8	1	0,8	1
2	0,8	0,7	0,8	0,7	0,8	1	0,8	0,4
3	0,6	0,2	0,7	0,5	0,6	1	0,6	1
4	0,6	0,2	0,7	0,9	0,6	1	0,9	0,4
5	0,8	0,7	0,8	0,7	0,6	1	0,9	0,4
6	0,6	0,2	0,7	0,9	0,6	1	0,6	1
7	0,6	0,2	0,7	0,5	0,8	1	0,8	0,4

**Table 2** – Difference in one-year overall survival based on the different methods and scenarios and its associated standard error (SE)

Scenario	Time-fixed Cox Model				Landmark analysis				Time-varying Cox model				Delayed e	
	Older patients		Younger patients		Older patients		Younger patients		Older patients		Younger patients		Older patients	
	Estimate*	Empirical SE**	Estimate	Empirical SE	Estimate	Empirical SE	Estimate	Empirical SE	Estimate	Empirical SE	Estimate	Empirical SE	Estimate	Empirical SE
1	-0.133	0.045	-0.134	0.043	0.000	0.048	-0.007	0.054	-0.001	0.049	-0.005	0.047	0.000	0.007
2	-0.302	0.045	-0.134	0.043	0.001	0.046	-0.007	0.054	-0.005	0.061	-0.004	0.047	-0.001	0.005
3	-0.092	0.044	-0.049	0.041	-0.003	0.042	-0.007	0.047	0.000	0.047	-0.006	0.042	0.000	0.009
4	-0.319	0.047	-0.049	0.041	0.001	0.053	-0.007	0.047	0.003	0.063	-0.006	0.042	0.002	0.005
5	-0.311	0.042	-0.118	0.043	0.006	0.052	-0.001	0.044	0.004	0.059	-0.002	0.049	0.000	0.005
6	-0.120	0.045	-0.048	0.044	-0.002	0.051	-0.001	0.043	0.008	0.052	-0.004	0.046	0.004	0.012
7	-0.255	0.045	-0.052	0.044	0.006	0.047	0.001	0.055	0.008	0.058	-0.001	0.045	0.000	0.003

\* Average estimated difference in 1-year overall survival probabilities across the 1000 simulations. The true value is 0.

\*\* Standard deviation of the 1000 estimated difference in 1-year overall survival probabilities

