

Automated detection of axonal injury along white matter tracts in acute severe head trauma

Supplementary Information

Supplementary Tables

ID	Number of TRACULA Reconstructed Tracts				Focal Lesions on Acute Structural MRI
	i) Complete	i) Reinitialized	iii) Incomplete	iv) Failed	
P1	0*	N/A	N/A	N/A	R frontal and parietal contusions; small R frontal subdural hemorrhage
P2	40	0	0	0	L frontal EVD tract
P3	40	0	0	0	None
P4	38	2 [MCP, LH CST]	2 [MCP, LH CST]	0	Bifrontal contusions; R frontoparietal contusion
P5	37	3 [LH CST, ACOMM, RH FAT]	0	0	L frontal contusion
P6	40	0	0	0	L frontal contusion
P7	33	7 [CC BODYPM, ACOMM, LH SLF1, RH CST, RH FAT, LH FAT, RH SLF1,	0	0	None
P8	37	3 [LH CST, RH CST, RH MLF]	0	0	R posterior temporal contusion; L anterior temporal contusion
P9	37	3 [RH CST, RH ECM, RH SLF1]	0	0	Hemorrhage in splenium of corpus callosum

P10	37	3 [ACOMM, RH ECM, RH UF]	0	2 [ACOMM, RH UF]	R anterior temporal contusion; L tentorial subdural hemorrhage
P11	38	2 [LH CBD, ACOMM]	0	0	L temporo-parietal contusion; R thalamic hemorrhage
P12	40	0	0	0	R anterior temporal contusion
P13	37	3 [LH CST, RH CST, LH CBV]	0	0	L frontal contusion
P14	34	6 [RH SLF1, ACOMM, CC BODY PF, RH SLF2, RH FAT, RH UF]	1 [RH SLF1]	3 [ACOMM, CC BODY PF, RH SLF2]	R frontal contusion; L frontal and L mesial temporal contusions
P15	39	1 [LH CBV]	0	0	L insular contusion; R frontal EVD tract
P16	40	0	0	0	None
P17	35	5 [RH CBV, RH CBD, RH EMC, RH OR, RH FAT]	0	0	R anterior temporal and L posterior temporal contusions; R frontal and L temporal subdural hemorrhages.
P18	36	4 [CC BODYPM, CC ROSTRUM, LH FAT, LH CST]	0	0	L temporal contusion; L frontal EVD tract.
Mean	37.52	2.47	0.17	0.29	-
SD	2.18	2.182821	0.5285952	0.848875084	-

Supplementary Table S1. The table reports **i)** the number of tracts for each patient that were reconstructed completely and accurately in TRACULA without the need for reinitialization; **ii)** the tracts that were reinitialized upon visual inspection; **iii)** the tracts that resulted in partial reconstructions after reinitialization; **iv)** the tracts that resulted in failed reconstructions after reinitialization. The presence and location of focal lesions are reported for each patient. *In this subject (P1) the FreeSurfer “recon-all” pipeline failed due to lesion and it was thus not possible to run the TRACULA pipeline. EVD = external ventricular drain. SD: standard deviation. **Tracts abbreviations:** ACOMM: anterior commissure; AF: arcuate fasciculus; AR: acoustic radiation; ATR: anterior thalamic radiation; CC BODYC: central section of the body of the CC; CC BODYP: parietal section of the body of the CC; CC BODYPF: prefrontal section of the body of the CC; CC BODYPM: premotor section of the body of the CC; CC BODYT: temporal section of the body of the CC; CC GENU: genu of the CC; CC ROSTRUM: rostrum of the CC; CC SPLENIUM: splenium of the CC; CBD: dorsal portion of cingulum bundle; CBV: ventral portion of the cingulum bundle; CC: corpus callosum; CST: cortico-spinal tract; EMC: extreme capsule; FAT: frontal Aslant tract; ILF: inferior longitudinal fasciculus; LH: left hemisphere; ILF: middle longitudinal fasciculus; OR: optic radiation; RH: right hemisphere; SLF I,II,III: first, second, and third branch of the superior longitudinal fasciculus; UF: uncinete fasciculus.

Metric	Tract	W	p-value
FA_0	CC BODYPM	0.8807721	0.0017522
FA_0	RH UF	0.916552	0.0147221
FA_0	LH AR	0.9212808	0.0198839
FA_0	LH EMC	0.9320967	0.0401684
FA_0	RH SLF2	0.9262095	0.0273236
FA_0	RH CBV	0.9236934	0.023218
FA_0	LH CBV	0.9285724	0.031871
FA_1	RH SLF3	0.8820088	0.0018781
FA_1	CC GENU	0.8516014	0.0003693
FA_1	RH CBD	0.9334387	0.0438909
FA_1	CC BODYC	0.9145991	0.0130204
FA_1	ACOMM	0.9073055	0.0082862
FA_1	LH SLF2	0.9322933	0.0406927
FA_2	RH AR	0.9312109	0.0378918
FA_2	RH CBD	0.9313078	0.0381343
FA_2	CC SPLENIUM	0.9324933	0.0412334
FA_2	RH SLF1	0.9267231	0.0282511
FA_2	RH CST	0.8761603	0.0013563
FA_2	CC BODYC	0.9220161	0.0208435
FA_2	ACOMM	0.9217503	0.0204911
FA_3	RH ATR	0.9114721	0.0107128
FA_3	MCP	0.9108586	0.010313
FA_3	LH CBD	0.8941281	0.0037642
FA_3	CC BODYC	0.9137886	0.0123761
FA_3	LH MLF	0.9151347	0.0134654
FA_3	RH CBV	0.8393757	0.0002004
FA_3	LH CBV	0.8521664	0.0003801
MD_0	LH SLF3	0.8694882	0.0009427
MD_0	CC BODYPF	0.8447102	0.0002609
MD_0	LH FAT	0.9088278	0.0090978
MD_0	RH SLF3	0.7399372	2.79E-06
MD_0	CC GENU	0.928408	0.0315307
MD_0	LH AR	0.9332277	0.0432828
MD_0	RH CBD	0.8790717	0.0015936
MD_0	RH SLF2	0.9299652	0.0349143
MD_0	LH OR	0.8745909	0.0012442
MD_0	LH CST	0.928028	0.0307579
MD_0	RH CBV	0.8323573	0.0001426
MD_0	CC BODYT	0.8907428	0.0030908
MD_0	LH CBV	0.8262106	0.0001064
MD_1	CC BODYPF	0.9043596	0.006925
MD_1	RH MLF	0.9168459	0.0149978
MD_1	RH UF	0.903201	0.0064562
MD_1	LH ILF	0.907908	0.0085979
MD_1	LH UF	0.9124511	0.0113851
MD_1	ACOMM	0.8992136	0.0050829
MD_1	RH AF	0.8600684	0.0005717

MD_1	LH MLF	0.8642138	0.0007111
MD_1	CC BODYT	0.917487	0.0156181
MD_2	RH ATR	0.9191426	0.0173478
MD_2	LH OR	0.5514259	1E-08
MD_2	RH SLF1	0.9067864	0.0080273
MD_2	LH ILF	0.7205661	1.36E-06
MD_2	RH CST	0.9178838	0.0160154
MD_2	LH SLF2	0.9212015	0.0197832
MD_2	CC BODYT	0.9194121	0.0176478
MD_3	LH SLF3	0.8728746	0.0011327
MD_3	RH SLF3	0.8530392	0.0003974
MD_3	RH FAT	0.8866142	0.0024378
MD_3	RH ILF	0.7975626	2.901E-05
MD_3	LH SLF1	0.9349226	0.0484249
MD_3	LH AR	0.8107626	5.212E-05
MD_3	RH AR	0.8252399	0.0001016
MD_3	RH EMC	0.9247809	0.0249073
MD_3	LH OR	0.7463136	3.56E-06
MD_3	LH ILF	0.7221288	1.44E-06
MD_3	ACOMM	0.9195157	0.0177646
MD_3	LH MLF	0.8449381	0.0002639
MD_3	RH CBV	0.8811756	0.0017923

Supplementary Table S2. The table reports the tracts that for each dMRI metric (FA_0, FA_1, FA_2, FA_3, MD_0, MD_1, MD_2, MD_3) showed that the distribution of their values across the controls departed significantly from normality (Shapiro-Wilk test, $p < 0.05$). W- and p-values are reported for each tract. For these tracts, a rank-based inverse normal transformation was applied to the data for both controls and patients. ACOMM: anterior commissure; AF: arcuate fasciculus; AR: acoustic radiation; ATR: anterior thalamic radiation; CC BODYC: central section of the body of the CC; CC BODYP: parietal section of the body of the CC; CC BODYPF: prefrontal section of the body of the CC; CC BODYPM: premotor section of the body of the CC; CC BODYT: temporal section of the body of the CC; CC GENU: genu of the CC; CC ROSTRUM: rostrum of the CC; CC SPLENIUM: splenium of the CC; CBD: dorsal portion of cingulum bundle; CBV: ventral portion of the cingulum bundle; CC: corpus callosum; CST: cortico-spinal tract; EMC: extreme capsule; FAT: frontal Aslant tract; ILF: inferior longitudinal fasciculus; LH: left hemisphere; ILF: middle longitudinal fasciculus; OR: optic radiation; RH: right hemisphere; SLF I,II,III: first, second, and third branch of the superior longitudinal fasciculus; UF: uncinata fasciculus.

Subject	Group	Average Rotation	Average Translation	Portion of Slices with signal drop-out	Drop-out Severity	TMI
1	Controls	0.001727	0.418448	0.000000	1.00000	1.03797
2	Controls	0.001329	0.319263	0.000000	1.00000	-0.197668
3	Controls	0.003071	0.355562	0.000000	1.00000	1.82382
4	Controls	0.001846	0.352028	0.000000	1.00000	0.589744
5	Controls	0.001936	0.452903	0.000000	1.00000	1.53774
6	Controls	0.001706	0.384086	0.000000	1.00000	0.724929
7	Controls	0.001317	0.949004	0.000000	1.00000	5.15599
8	Controls	0.001924	0.282322	0.000000	1.00000	0.0722552

9	Controls	0.001469	0.240727	0.000000	1.00000	-0.7291
10	Controls	0.001356	0.428688	0.000000	1.00000	0.760612
11	Controls	0.002197	0.274383	0.000000	1.00000	0.272836
12	Controls	0.001266	0.269774	0.000000	1.00000	-0.681865
13	Controls	0.001247	0.356736	0.000000	1.00000	0.0403459
14	Controls	0.001499	0.230597	0.000000	1.00000	-0.894333
15	Controls	0.001676	0.230809	0.000000	1.00000	-0.689606
16	Controls	0.001565	0.321352	0.000000	1.00000	-0.0188977
17	Controls	0.002104	0.260174	0.000000	1.00000	0.0574637
18	Controls	0.001334	0.208548	0.000000	1.00000	-1.13678
19	Controls	0.002046	0.329952	0.000000	1.00000	0.597815
20	Controls	0.002134	0.232391	0.000000	1.00000	-0.146972
21	Controls	0.001854	0.273294	0.000000	1.00000	-0.0734511
22	Controls	0.003250	0.242338	0.345349	1.15499	1.03516
23	Controls	0.002197	0.196277	0.000000	1.00000	-0.392795
24	Controls	0.002040	0.234621	0.000000	1.00000	-0.219742
25	Controls	0.001960	0.286823	0.000000	1.00000	0.146285
26	Controls	0.001193	0.243690	0.000000	1.00000	-0.976021
27	Controls	0.001523	0.237298	0.000000	1.00000	-0.705873
28	Controls	0.001477	0.361191	0.000000	1.00000	0.304468
29	Controls	0.001706	0.271702	0.000000	1.00000	-0.232331
30	Controls	0.002420	0.290654	0.000000	1.00000	0.631097
31	Controls	0.001344	0.282981	0.000000	1.00000	-0.492588
32	Controls	0.001116	0.237358	0.000000	1.00000	-1.10542
33	Controls	0.001482	0.329762	0.213220	1.16272	0.0416457
P2	Patients	0.002398	0.319144	0.000000	1.00000	0.851761
P3	Patients	0.002449	0.242368	0.000000	1.00000	0.248332
P4	Patients	0.014575	0.896906	0.134108	1.14880	17.7473
P5	Patients	0.024903	1.010200	0.000000	1.00000	28.8665
P6	Patients	0.002177	0.180212	0.000000	1.00000	-0.549083
P7	Patients	0.024673	0.908842	0.128260	1.07433	27.7767
P8	Patients	0.001907	0.290166	0.000000	1.00000	0.121952
P9	Patients	0.009026	0.282405	0.000000	1.00000	7.05599
P10	Patients	0.008497	0.471386	0.000000	1.00000	8.14538

P11	Patients	0.001599	0.275717	0.021505	1.00446	-0.303609
P12	Patients	0.000872	0.219660	0.000000	1.00000	-1.49567
P13	Patients	0.002152	0.269136	0.000000	1.00000	0.184329
P14	Patients	0.001000	0.227638	0.000000	1.00000	-1.30255
P15	Patients	0.000921	0.215866	0.000000	1.00000	-1.48044
P16	Patients	0.007765	0.325994	0.000000	1.00000	6.1873
P17	Patients	0.004763	0.348514	0.000000	1.00000	3.42733
P18	Patients	0.013854	0.933081	0.000000	1.00000	17.3465

Supplementary Table S3. The table reports the MRI head motion measures as extracted from *eddy* in FSL 6.0.1. for each subject in the study. The total motion index (TMI) is a composite score of four motion measures: i) average volume-by-volume rotation, ii) average volume-by-volume translation, iii) percentage of slices with signal drop-out, and iv) signal drop-out severity.

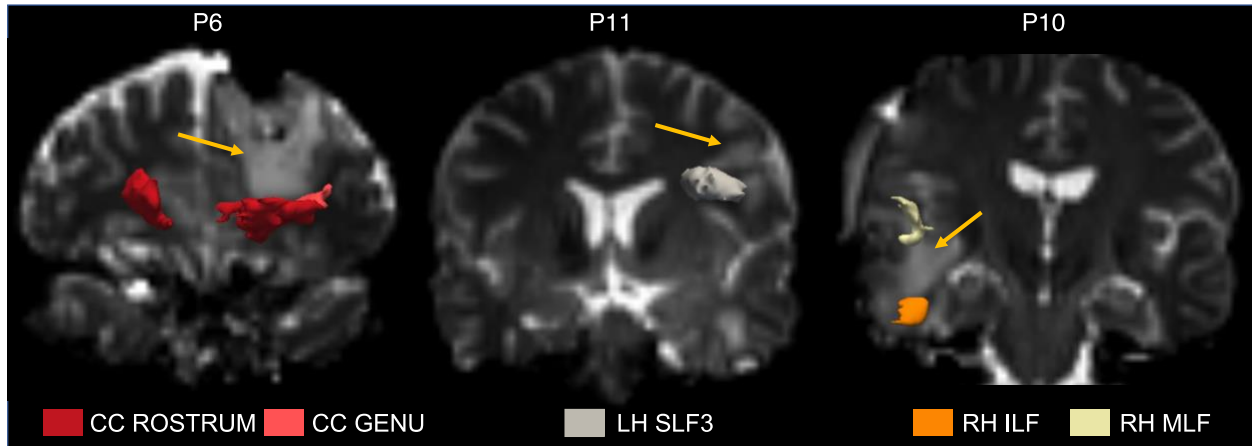
Variables	<i>rho</i>	<i>p</i>
Days in coma & GCS Total	-0.81	< 0.001
Days in coma & CRS-R Total	-0.82	< 0.001
GCS Total & CRS-R Total	0.97	< 0.001
GCS Total & Days to MRI	0.54	< 0.05
Days to MRI & TMI	0.53	< 0.05
Days to command-following & CRS-R-R Total	-0.57	< 0.05
Days in coma & Days to command-following	0.58	< 0.05

Supplementary Table S4. Correlations showing significant relationships between dependent, independent, and potential confounding variables. CRS-R = Coma Recovery Scale-Revised, GCS = Glasgow Coma Scale, TMI = Total Motion Index

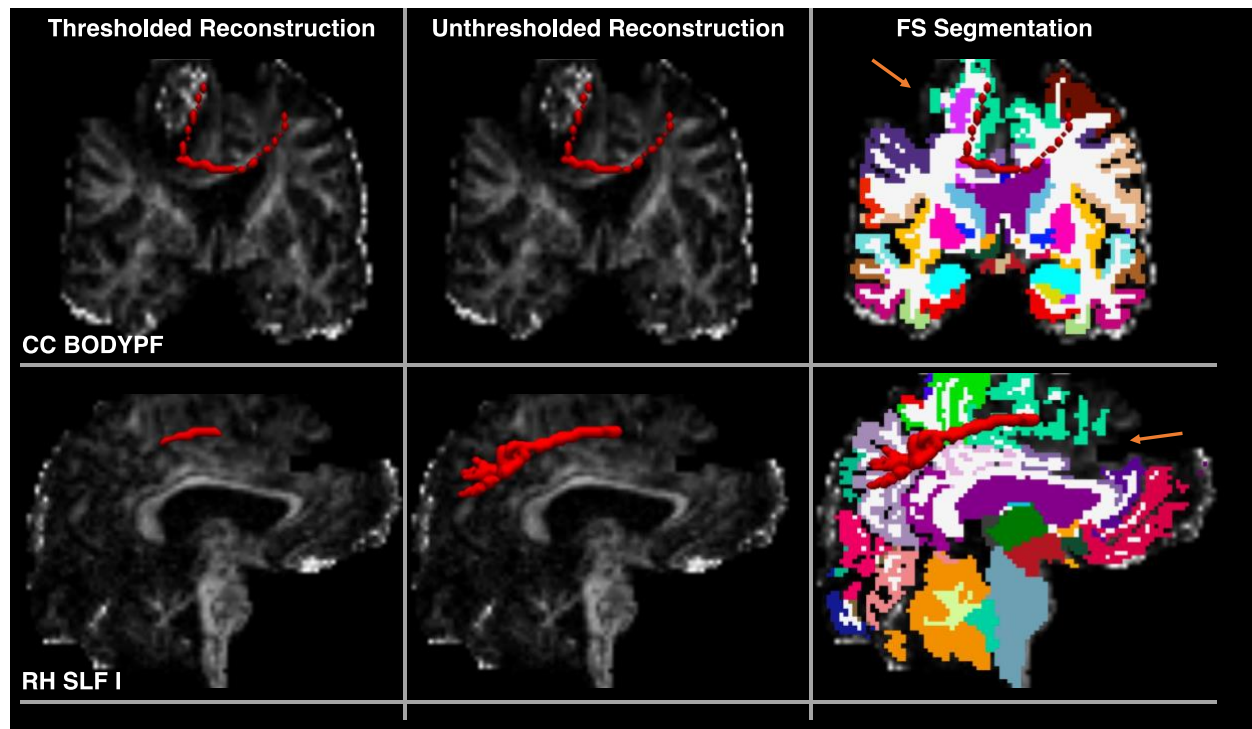
Variables	<i>rho</i>	<i>p</i>
Average D^2_M of MT tracts & N of affected MT tracts	0.80	< 0.001
Average D^2_M of LCT tracts & N of affected LCT tracts	0.94	< 0.001
Average D^2_M of LPT tracts & N LPT tracts	0.84	< 0.001

Supplementary Table S5. Correlations showing significant relationships between dependent, independent, and potential confounding variables for the language and motor tract subset analyses. MT = Motor tracts, LCT = Language Comprehension tracts, LPT = Language Production tracts, N = number, D^2_M = Mahalanobis distance

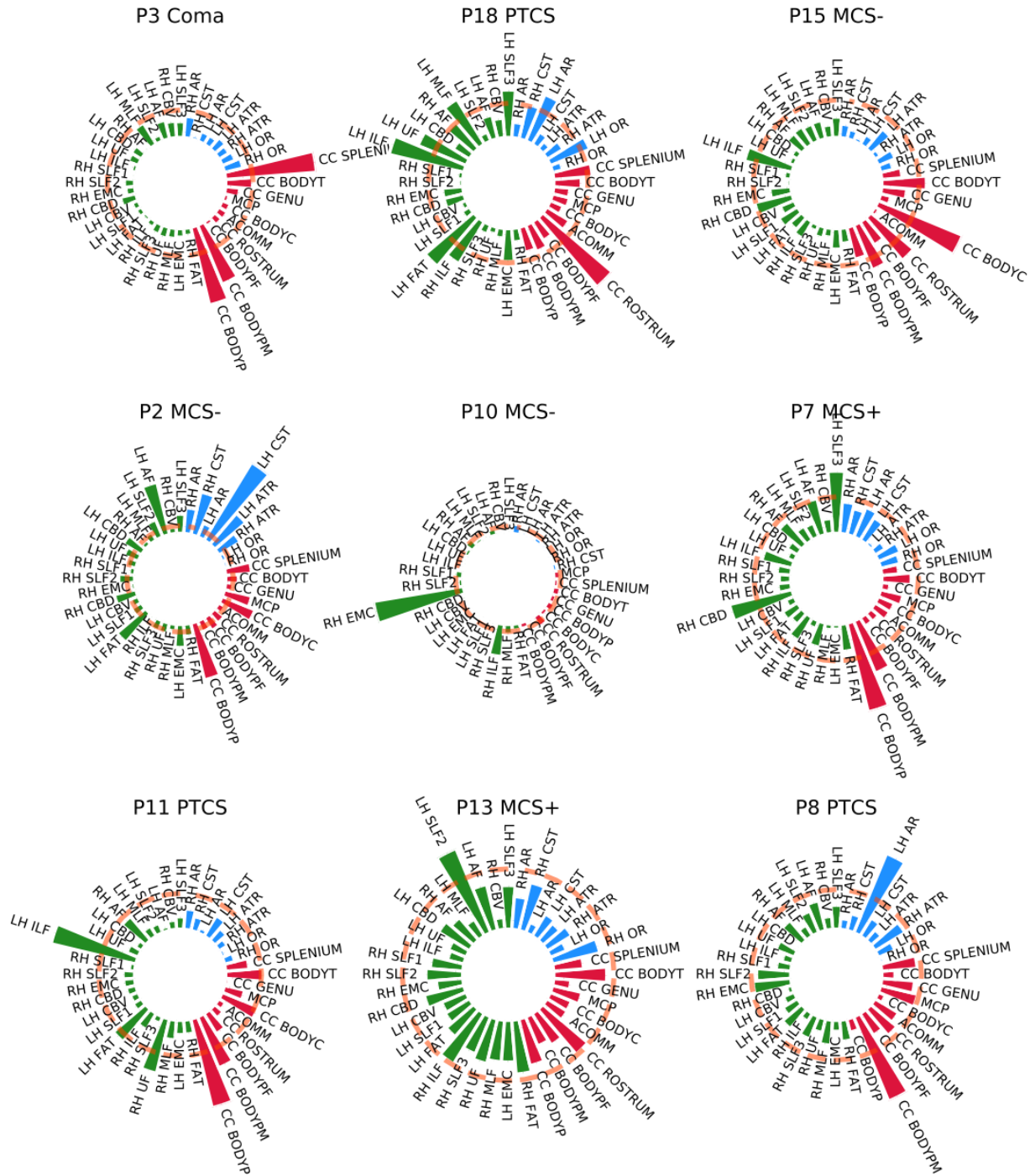
Supplementary Figures



Supplementary Figure S1. Examples of successful TRACULA reconstructions in three patients with focal lesions. 3D tract reconstructions are shown on the $b = 0 \text{ s/mm}^2$ dMRI volume thresholded at 20% of the maximum. Orange arrows point to the lesion. Coronal images are shown in radiological convention. Patient IDs correspond to table S2. CC GENU: genu of the corpus callosum; CC ROSTRUM: rostrum of the corpus callosum; LH SLF 3: third (most ventral) branch of the left superior longitudinal fasciculus. RH ILF: right inferior longitudinal fasciculus; RH MLF: right middle longitudinal fasciculus.

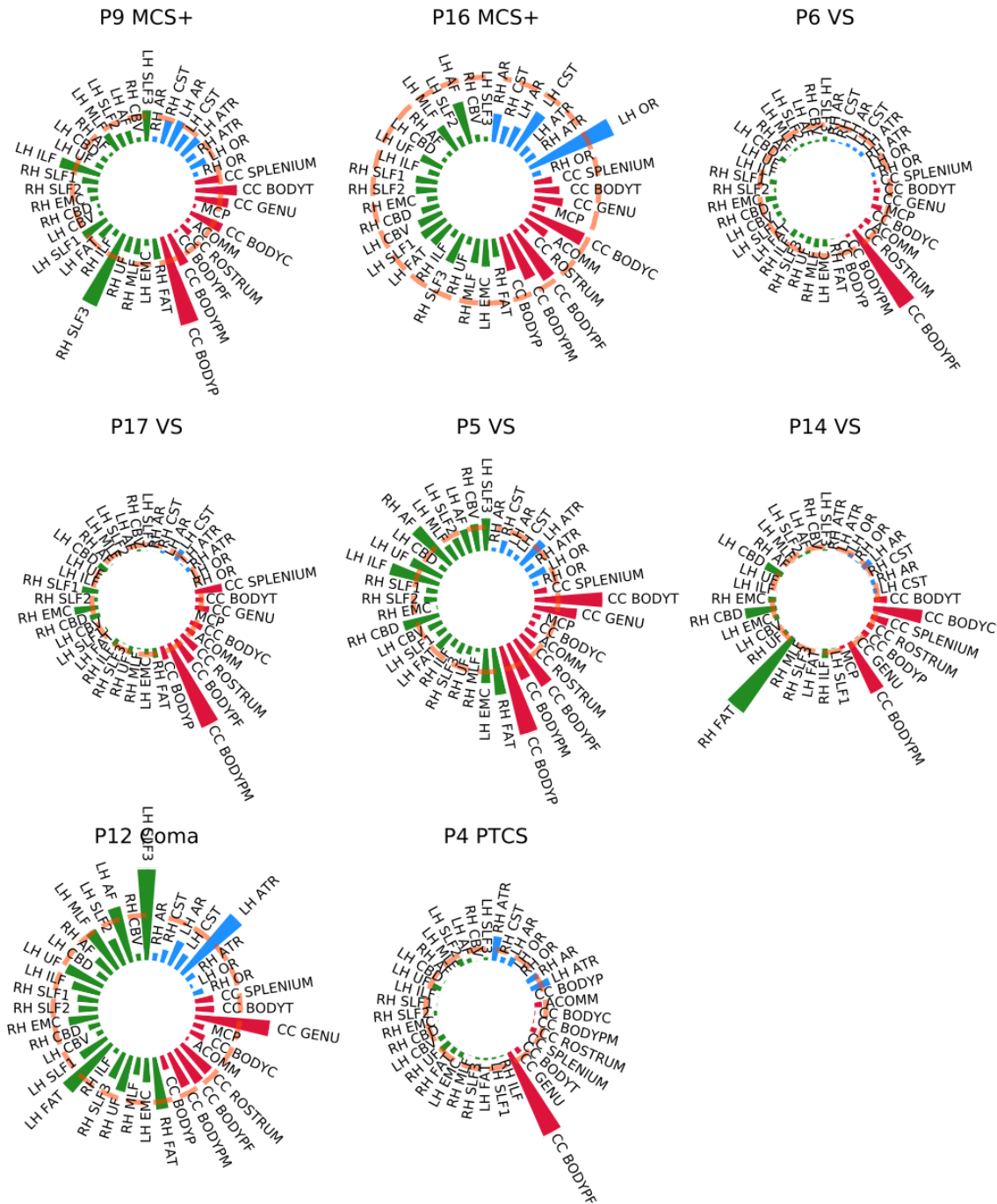


Supplementary Figure S2. Example of one failed and one partial TRACULA reconstructions for P14 (See table S2). RH SLFI: first (most dorsal) branch of the right superior longitudinal fasciculus. CC BODYPF: pre-frontal section of the corpus callosum. 3D tract reconstructions are shown on the fractional anisotropy scalar map for both thresholded (tract visitation maps thresholded at 20% of the maximum) and unthresholded posterior distributions. Unthresholded 3D reconstructions are also shown overlaid onto the FreeSurfer anatomical segmentation. Orange arrows point to regions where the segmentation was abnormal due to the presence of a large frontal focal lesion.



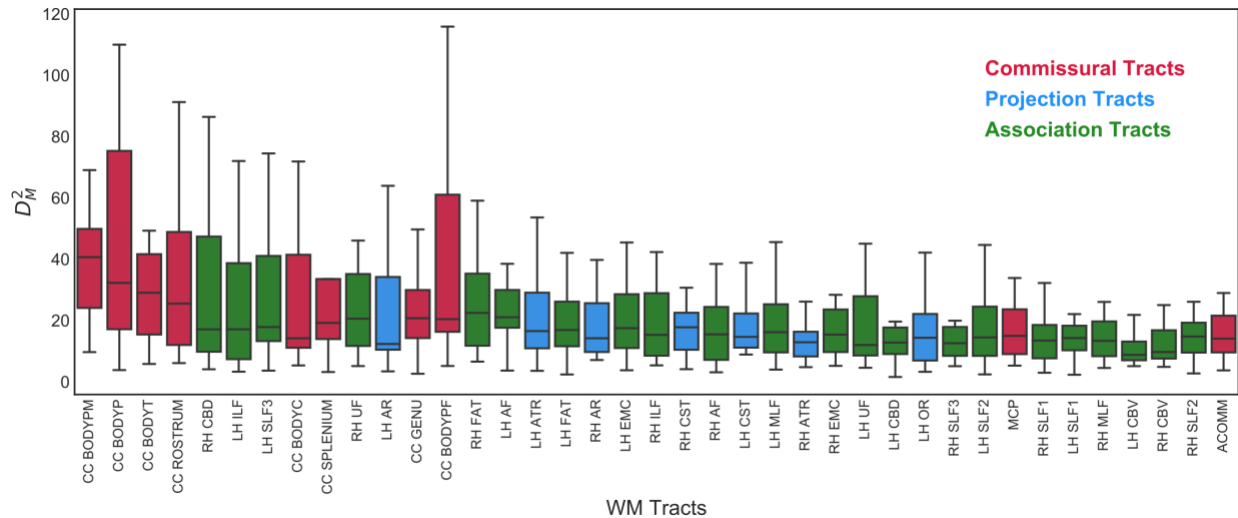
Supplementary Figure S3. The figure shows the individual tract profiles for nine out of 17 subjects with TBI (the remaining eight patients are shown in figure S4). The Mahalanobis distance for the 40 reconstructed tracts is plotted using polar bar plots. Tracts that resulted in either partial or failed reconstruction after reinitialization are not included in the individual profile of that patient. The pink dotted line corresponds to the critical value of the Chi-squared statistic at $\alpha = 0.001$. White matter tracts are grouped in commissural (red), associative (green), and projection pathways (blue). Level of consciousness at MRI for each patient is also reported (Coma; MCS+: minimally conscious state plus, evidence of language function (e.g., reproducible movement to command, object recognition, intelligible verbalization); MCS-: minimally conscious state minus, no evidence of language function, but shows at

least one behavior consistent with a minimally conscious state (e.g., automatic motor response); PTCS: post-traumatic confusional state; VS: vegetative state). For a complete list of WM tract abbreviations see table S2. Patient IDs correspond to table S2.

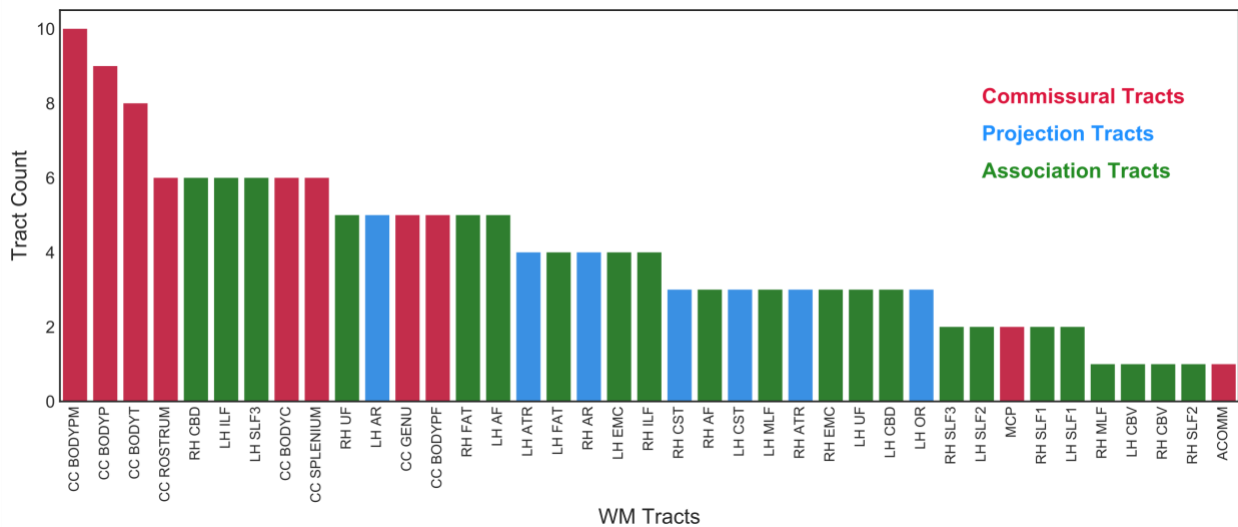


Supplementary Figure S4. Individual Patient Profiles. The figure shows the individual profiles for the remaining eight out of 17 patients. The Mahalanobis distance for the 40 reconstructed tracts is plotted using polar bar plots. Tracts that resulted in either partial or failed reconstruction after reinitialization are not included in the individual profile of that patient. The pink dotted line corresponds to the critical value of the Chi-squared statistic at $\alpha = 0.001$. White matter tracts are grouped in commissural (red), associative (green), and projection pathways (blue). Tracts that resulted in either partial or failed reconstruction after reinitialization are not included. Level of consciousness at MRI for each patient is also reported (Coma; MCS+: minimally conscious state plus, evidence of language function (e.g.,

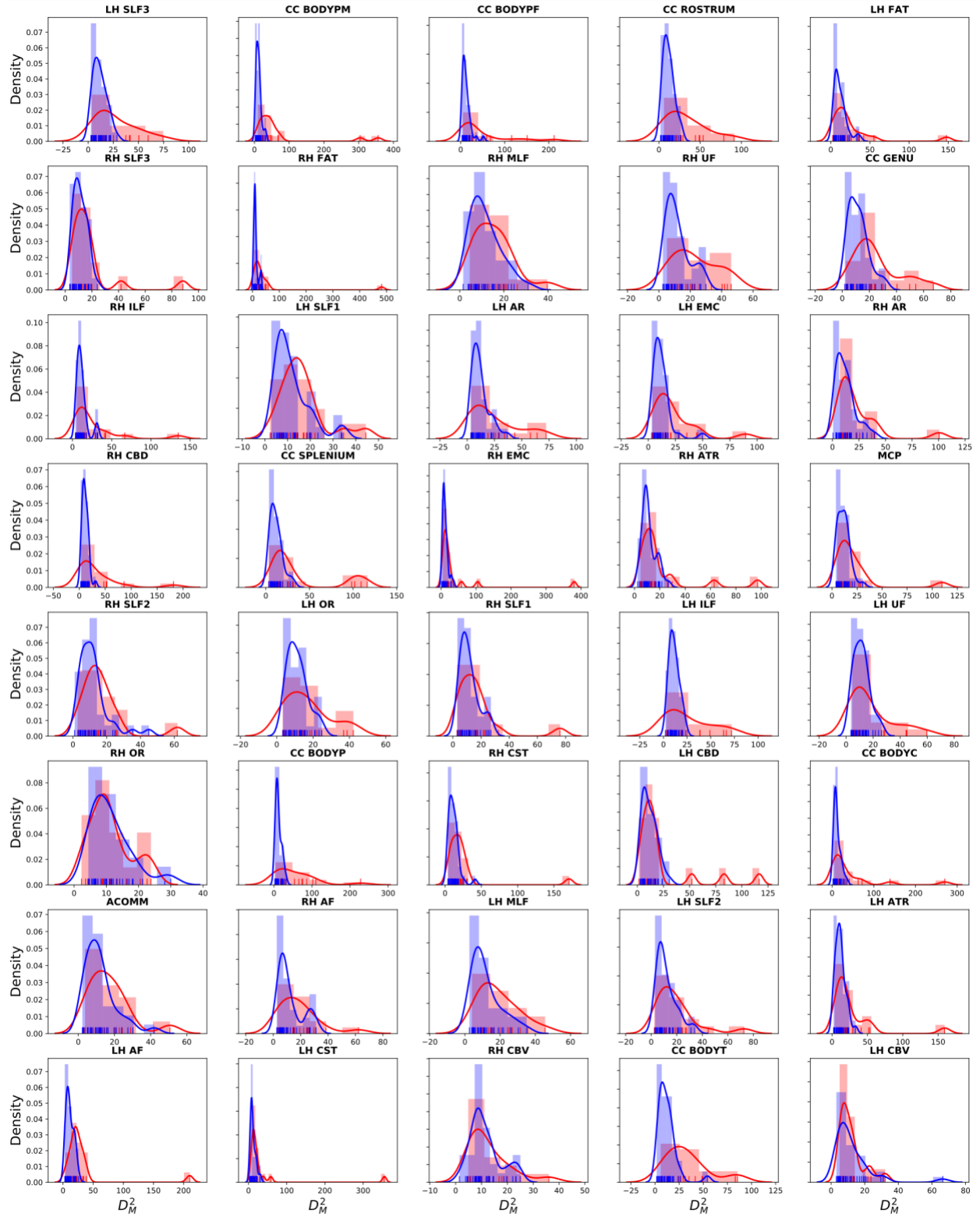
reproducible movement to command, object recognition, intelligible verbalization); MCS-: minimally conscious state minus, no evidence of language function, but shows at least one behavior consistent with a minimally conscious state (e.g., automatic motor response); PTCS: post-traumatic confusional state; VS: vegetative state). For a complete list of WM tract abbreviations see table S2. Patient IDs correspond to table S2.



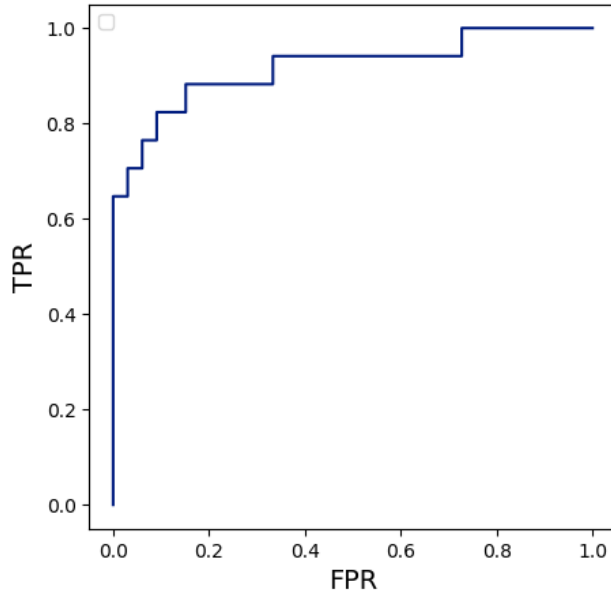
Supplementary Figure S5. The box plot reports the Mahalanobis distance (D^2_M) for each tract across all subjects with TBI. Bar colors indicate the tract group: commissural (red), projection (blue), association (green). Tracts that resulted in either partial or failed reconstruction after reinitialization are not included. For a complete list of white matter (WM) tract abbreviations see table S2.



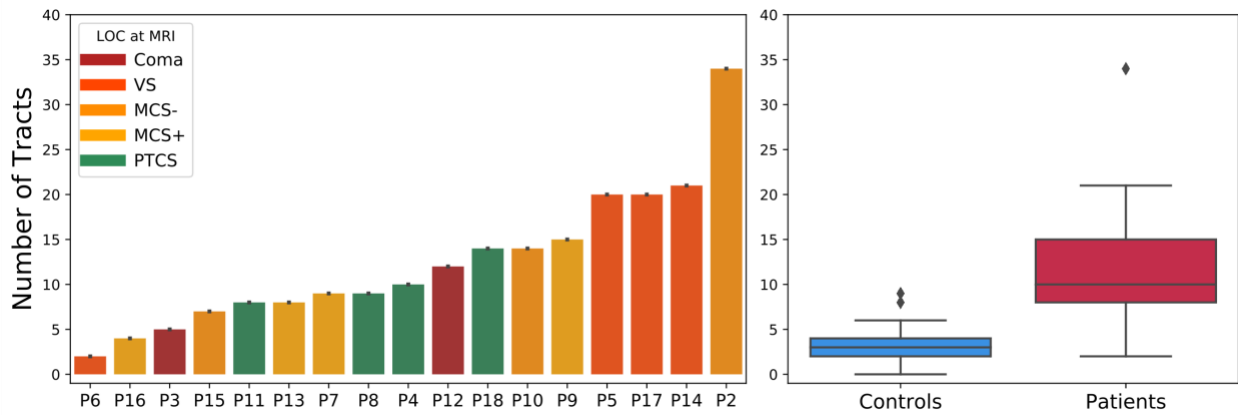
Supplementary Figure S6. The bar plot reports the number of times each tract resulted damaged across patients. Bar colors indicate the tract group: commissural (red), projection (blue), association (green). Tracts that resulted in either partial or failed reconstruction after reinitialization are not included. For a complete list of white matter (WM) tract abbreviations see table S2.



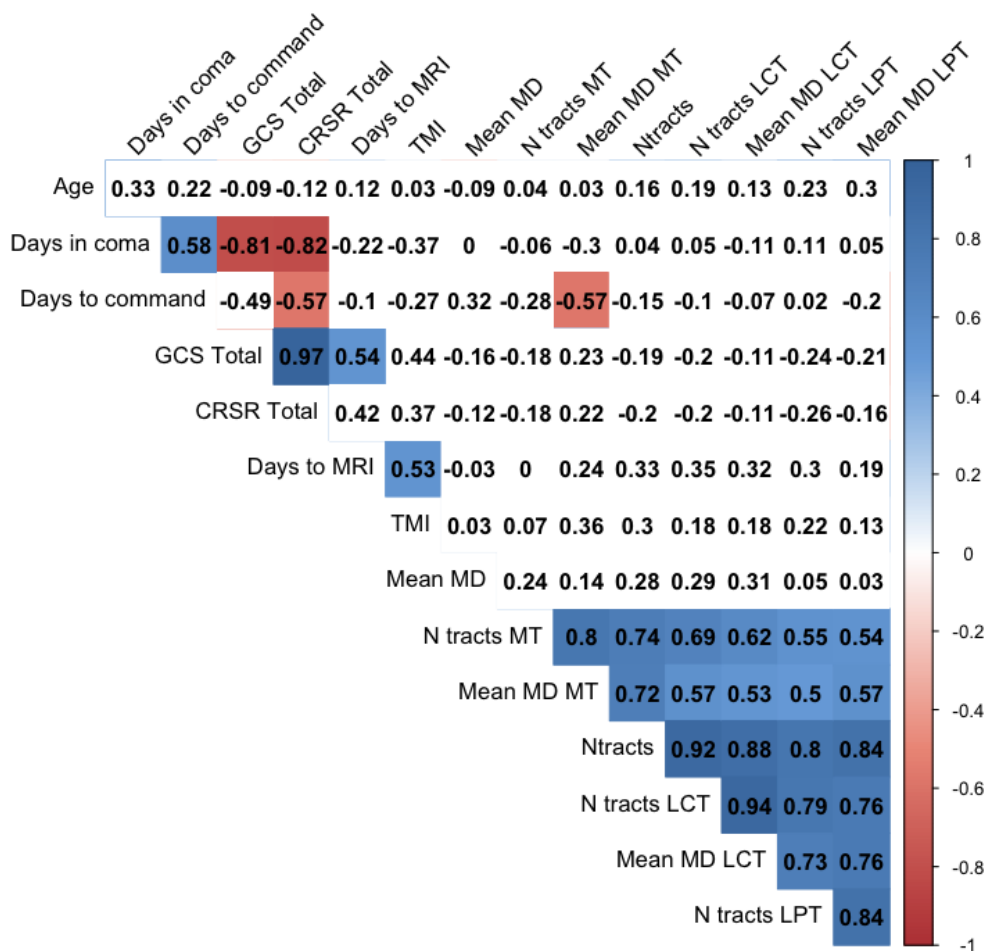
Supplementary Figure S7. Probability density functions of Mahalanobis distance values (D_M^2) are shown for patients (red) and controls (blue) for each of the 40 reconstructed tracts. For a complete list of WM tract abbreviations see table S2.



Supplementary Figure S8. Receiver operator characteristic (ROC) curve shows the performance of the multivariate pipeline in discriminating between patients and controls. FPR: false positive rate; TPR: true positive rate.



Supplementary Figure S9. The figure reports the results of the multivariate analysis when removing for each subject the tracts that needed to be reinitialized (i.e., using only the tracts that were successfully reconstructed in TRACULA without manual intervention) (See table S2). **Left panel)** The number of extreme WM tracts is shown for each subject with TBI. A tract was considered extreme if its p - value, correspondent to a Chi-square statistic, was < 0.001 ($p < 0.05$ corrected for multiple comparisons across 40 tracts). Patients are ordered based on the number of damaged tracts. The color of the bars reflects the level of consciousness (LOC) at the day of MRI. IDs corresponding to those used in Table S2 ($P2, \dots, P18$) are indicated for each patient. **Right panel)** Boxplots showing the number of extreme tracts for controls and patients. Asterisk indicate a significant difference (Wilcoxon sum rank test : $W = 4.79$, $p = 1.64e - 6$).



Supplementary Figure S10. The figure shows the correlation matrix investigating the relationship between continuous dependent, independent, and potential confounding variables used in our primary and secondary analyses. The correlation coefficient (*rho*) is displayed in the cell. Cells for variables that are significantly correlated at $p > 0.05$ level are shaded in. Warmer colors reflect higher negative correlations. Cooler colors reflect higher positive correlations. MD = average Mahalanobis distance of affected tracts, Ntracts = number of affected tracts, GCS = Glasgow Coma Scale, CRS-R = Coma Recovery Scale-Revised, TMI = Total Motion Index, MT = Motor Tracts, LPT = Language Production Tracts, LCT = Language Comprehension Tracts.