

Supplementary Materials

Supplement 1. Derivation of gradient descent algorithm (Equation 1)

When carrying out gradient descent algorithm, our goal is to minimize the following loss function:

$$Loss = (Y - G\beta - C\gamma)^2.$$

with respect to β_j for each j in turn. The first and second derivative of loss function is

$$\frac{\partial Loss}{\partial \beta_j} = -2G_j^T(Y - G\beta - C\gamma), \quad \frac{\partial^2 Loss}{\partial \beta_j^2} = 2G_j^T G > 0.$$

Since the second derivative is constantly larger than 0, the iterative formula of gradient descent can be used:

$$\beta_j^{(r+1)} = \beta_j^{(r)} - \alpha' \frac{\partial Loss}{\partial \beta_j} = \beta_j^{(r)} + 2\alpha' G_j^T (Y - G\beta^{(i)} - C\gamma),$$

and we define the learning rate $\alpha = 2\alpha'$.

Supplementary Figures

Figure S1. Prediction accuracy of TL-PRS(ind) and TL-PRS methods in simulations. Different genetic designs (0.1% and 1% causal variants) were simulated as well as cross-population genetic correlations (0.4, 0.7 and 1.0). Heritability was fixed at 50%. Prediction accuracy was measured by the squared correlation (R^2) between the simulated and predicted phenotypes in the testing dataset, averaged across 20 simulation replicates. Error bar indicates the standard deviation of R^2 across simulation replicates.

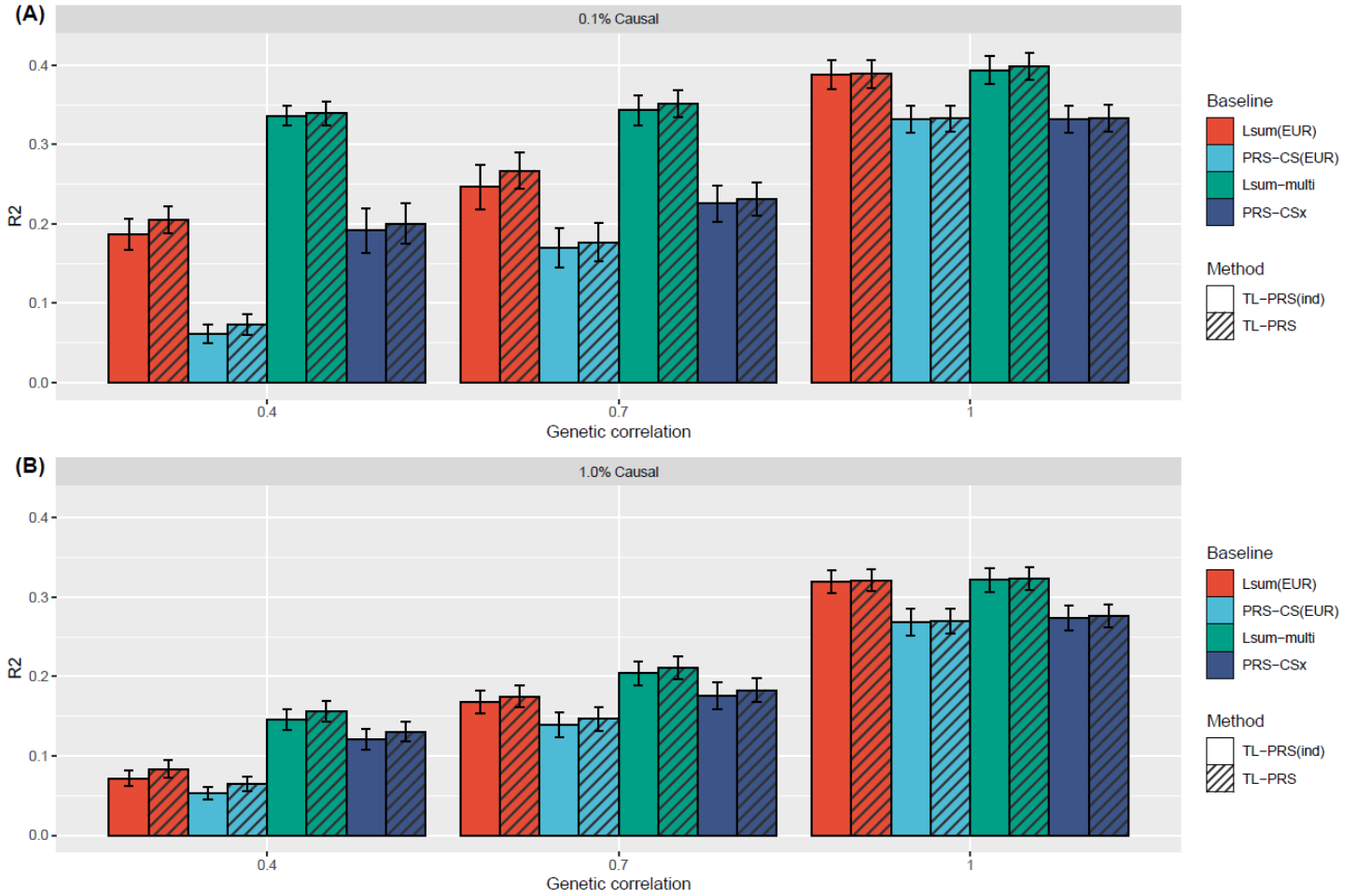
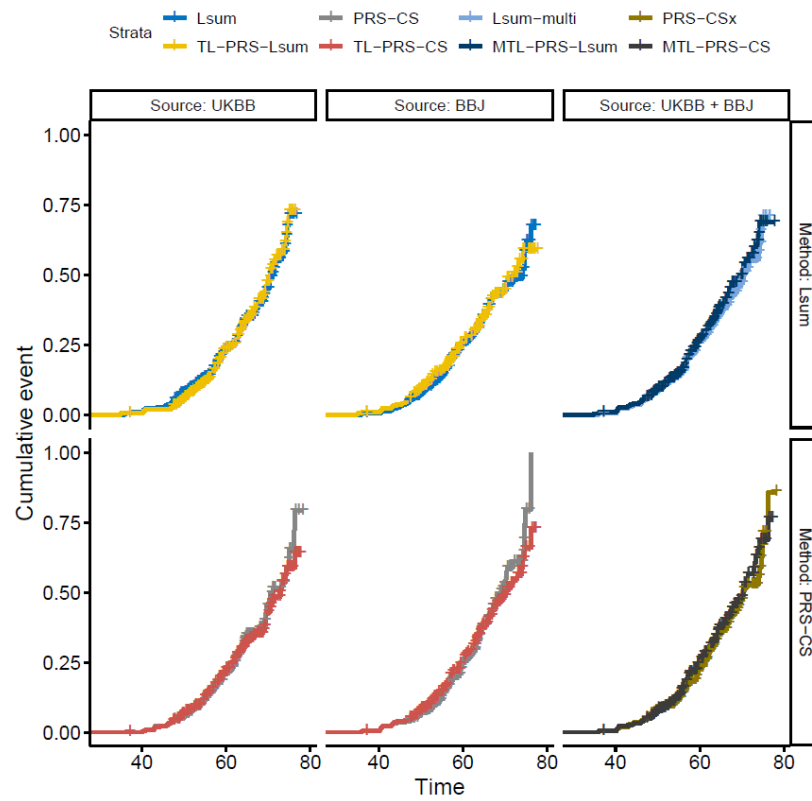
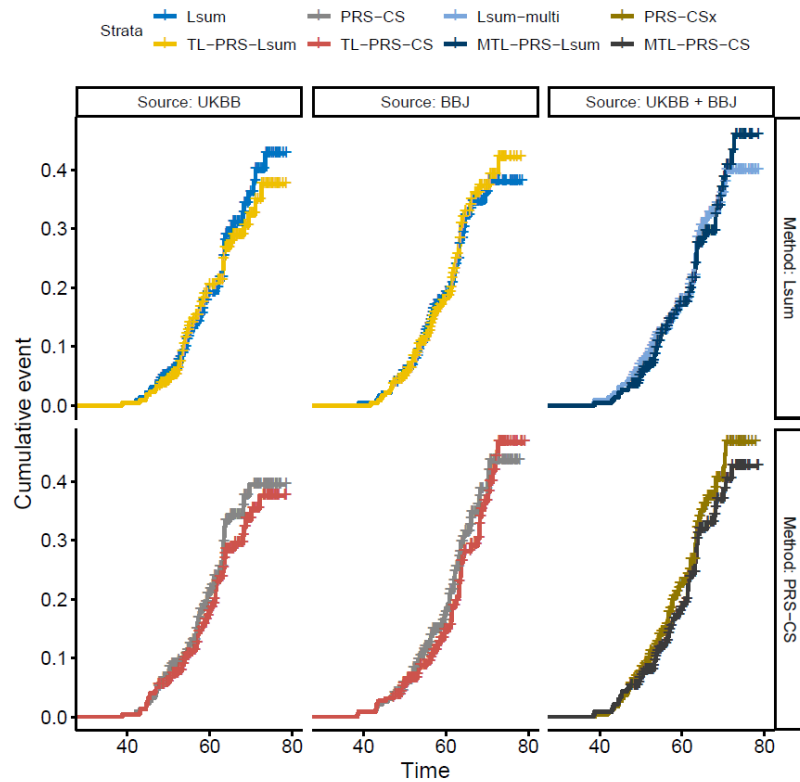


Figure S2. Cumulant event plot in terms of the top 10% PRS constructed by transfer learning methods and their baseline methods.

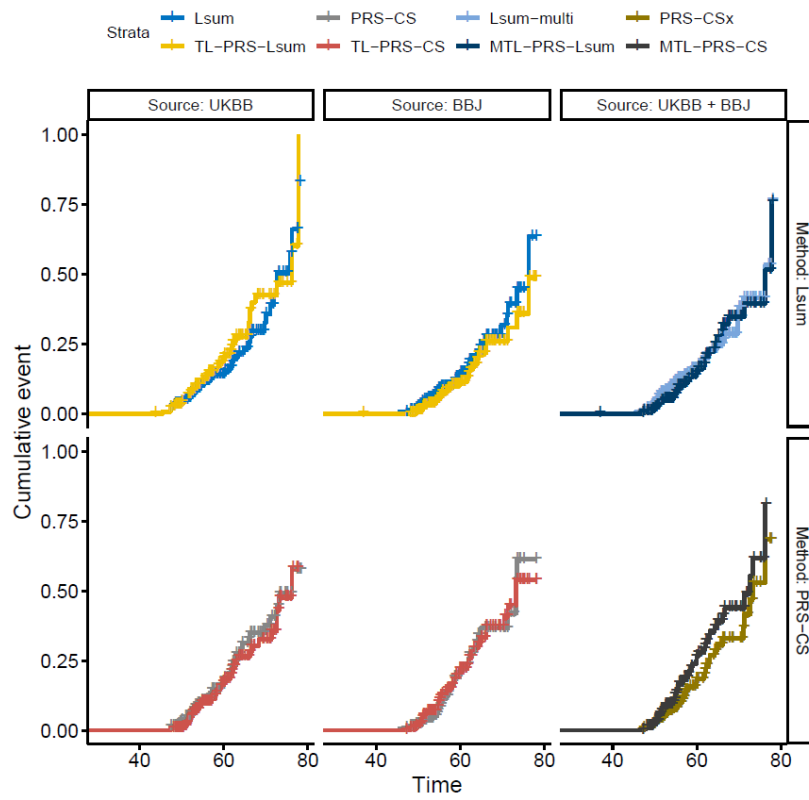
(a) South Asian, Type 2 diabetes, Case: Control=419:2211



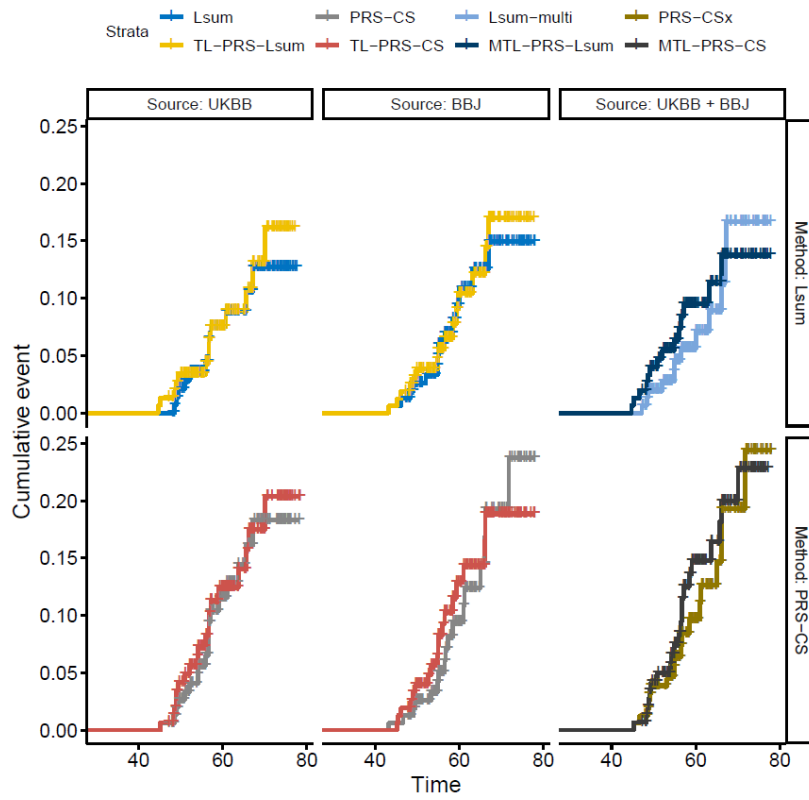
(b) South Asian, Coronary artery disease, Case: Control=362:2270



(c) African, Type 2 diabetes, Case: Control=177:1812



(d) African, Coronary artery disease, Case: Control=94:1902



Supplementary Tables

Table S1. The implementation of prediction methods in the simulation and application of UK Biobank

(a) The implementation of single-source prediction methods.

Method	Training data	Validation data	Testing data
PT	Select the hyperparameters using the combination of training and validation data. Individual-level data are required.		Assess prediction performance using individual-level data
Lsum	Select the hyperparameters using the combination of training and validation data. Individual-level data are required.		Assess prediction performance using individual-level data
PRS-CS	Select the hyperparameters using the combination of training and validation data. Individual-level data are not required.		Assess prediction performance using individual-level data
TL-PRS-Lsum	Train the baseline Lsum model using training data, and then implement TL-PRS-Lsum. Individual-level data are not required.	Fine-tune TL-PRS-Lsum model using validation data. Individual-level data are recommended.	Assess prediction performance using individual-level data
TL-PRS-CS	Train the baseline PRS-CS model using training data, and then implement TL-PRS-CS. Individual-level data are not required.	Fine-tune TL-PRS-CS model using validation data. Individual-level data are recommended.	Assess prediction performance using individual-level data

(b) The implementation of multi-source prediction methods.

Method	Training data	Validation data	Testing data
PT-multi Lsum-multi PRS-CS _x	Select the weights (hyperparameter) to linearly combine single-source prediction models using combination of training and validation data. Individual-level data are required to fine-tune the weight parameter.		Assess prediction performance using individual-level data
MTL-PRS-Lsum MTL-PRS-CS	Train the baseline Lsum-multi/PRS-CS _x model using training data, and then implement TL-PRS. Individual-level data are not required.	Fine-tune TL-PRS model using validation data. Individual-level data are recommended.	Assess prediction performance using individual-level data

Table S2. List of data sets used in simulations and analyses of real phenotypes.

Target Population	Trait	Total sample size	Training sample size	Validation sample size	Testing sample size
South Asian (SAS)	Simulation and real phenotypes	10,285	5,000	2,635	2,635
African (AFR)	real phenotypes	8,168	4,000	2,169	1,999

Table S3. The model requirement of TL-PRS and TL-PRS (ind).

Methods	Training dataset	Validation dataset	Testing dataset
TL-PRS	Only require summary statistics	Individual-level data are recommended.	Require individual-level data to assess prediction performance
TL-PRS (ind)	Require individual-level data	Require individual-level data	Require individual-level data to assess prediction performance

Table S4. Prediction accuracy of different PRS construction methods in analyses of eight traits in the South Asian cohort of UK Biobank. The approach with highest prediction R^2 is highlighted with bold.

(a) HDL

Model	Prediction R ² of PRS	Mean difference between top 10% and bottom 10% PRS
PT (UKBB)	0.07	0.301
Lsum (UKBB)	0.092	0.323
TL-PRS-Lsum (UKBB)	0.099	0.355
PRS-CS (UKBB)	0.101	0.332
TL-PRS-CS (UKBB)	0.109	0.376
PT (BBJ)	0.044	0.225
Lsum (BBJ)	0.061	0.291
TL-Lsum (BBJ)	0.065	0.293
PRS-CS (BBJ)	0.046	0.208
TL-PRS-CS (BBJ)	0.062	0.276
PT-multi	0.082	0.328
Lsum-multi	0.105	0.367
MTL-PRS-Lsum	0.111	0.38
PRSCSx	0.107	0.344
MTL-PRS-CS	0.117	0.369

(b) LDL

Model	Prediction R2 of PRS	Mean difference between top 10% and bottom 10% PRS
PT (UKBB)	0.02	0.448
Lsum (UKBB)	0.023	0.534
TL-PRS-Lsum (UKBB)	0.024	0.575
PRS-CS (UKBB)	0.02	0.429
TL-PRS-CS (UKBB)	0.024	0.509
PT (BBJ)	0.012	0.243
Lsum (BBJ)	0.019	0.432
TL-Lsum (BBJ)	0.019	0.48
PRS-CS (BBJ)	0.007	0.22
TL-PRS-CS (BBJ)	0.013	0.383
PT-multi	0.024	0.548
Lsum-multi	0.03	0.543
MTL-PRS-Lsum	0.031	0.533
PRSCSx	0.022	0.475
MTL-PRS-CS	0.026	0.425

(c) BMI

Model	Prediction R2 of PRS	Mean difference between top 10% and bottom 10% PRS
PT (UKBB)	0.047	3.025
Lsum (UKBB)	0.072	3.918
TL-PRS-Lsum (UKBB)	0.073	4.053
PRS-CS (UKBB)	0.067	3.972
TL-PRS-CS (UKBB)	0.073	4.155
PT (BBJ)	0.017	1.951
Lsum (BBJ)	0.022	2.404
TL-Lsum (BBJ)	0.025	2.633
PRS-CS (BBJ)	0.023	2.083
TL-PRS-CS (BBJ)	0.028	2.072
PT-multi	0.055	3.754
Lsum-multi	0.077	4.157
MTL-PRS-Lsum	0.076	4.162
PRSCSx	0.071	3.817
MTL-PRS-CS	0.075	4.291

(d) TG

Model	Prediction R2 of PRS	Mean difference between top 10% and bottom 10% PRS
PT (UKBB)	0.054	0.899
Lsum (UKBB)	0.082	1.142
TL-PRS-Lsum (UKBB)	0.081	1.119
PRS-CS (UKBB)	0.083	1.047
TL-PRS-CS (UKBB)	0.082	1.016
PT (BBJ)	0.046	0.77
Lsum (BBJ)	0.065	0.949
TL-Lsum (BBJ)	0.069	0.95
PRS-CS (BBJ)	0.053	0.896
TL-PRS-CS (BBJ)	0.053	0.856
PT-multi	0.072	0.958
Lsum-multi	0.094	1.162
MTL-PRS-Lsum	0.088	1.143
PRSCSx	0.093	1.059
MTL-PRS-CS	0.09	1.069

(e) SBP

Model	Prediction R2 of PRS	Mean difference between top 10% and bottom 10% PRS
PT (UKBB)	0.021	10.788
Lsum (UKBB)	0.035	13.902
TL-PRS-Lsum (UKBB)	0.038	16.129
PRS-CS (UKBB)	0.036	12.569
TL-PRS-CS (UKBB)	0.035	15.075
PT (BBJ)	0.005	6.824
Lsum (BBJ)	0.01	8.694
TL-Lsum (BBJ)	0.011	7.373
PRS-CS (BBJ)	0.008	7.161
TL-PRS-CS (BBJ)	0.009	6.145
PT-multi	0.023	12.404
Lsum-multi	0.038	14.231
MTL-PRS-Lsum	0.042	16.455
PRSCSx	0.038	14.306
MTL-PRS-CS	0.039	15.322

(f) DBP

Model	Prediction R2 of PRS	Mean difference between top 10% and bottom 10% PRS
PT (UKBB)	0.013	4.376
Lsum (UKBB)	0.034	6.667
TL-PRS-Lsum (UKBB)	0.034	6.914
PRS-CS (UKBB)	0.035	5.91
TL-PRS-CS (UKBB)	0.036	7.098
PT (BBJ)	0.001	0.973
Lsum (BBJ)	0.003	1.855
TL-Lsum (BBJ)	0.004	2.012
PRS-CS (BBJ)	0.003	3.145
TL-PRS-CS (BBJ)	0.006	2.498
PT-multi	0.013	3.396
Lsum-multi	0.033	6.227
MTL-PRS-Lsum	0.035	7.529
PRSCSx	0.034	6.404
MTL-PRS-CS	0.036	7.573

(g) CAD

Model	Prediction pseudo R2 of PRS	AUC	Risk ratio between top 10% and bottom 10% PRS
PT (UKBB)	0.014	0.747	2.381
Lsum (UKBB)	0.023	0.752	2.227
TL-PRS-Lsum (UKBB)	0.021	0.751	2.25
PRS-CS (UKBB)	0.022	0.752	4.231
TL-PRS-CS (UKBB)	0.031	0.756	3
PT (BBJ)	0.007	0.743	1.68
Lsum (BBJ)	0.022	0.75	2.611
TL-Lsum (BBJ)	0.018	0.75	2.273
PRS-CS (BBJ)	0.023	0.751	2.8
TL-PRS-CS (BBJ)	0.032	0.757	3.067
PT-multi	0.019	0.751	2.882
Lsum-multi	0.036	0.758	2.526
MTL-PRS-Lsum	0.029	0.756	3.267
PRSCSx	0.036	0.758	3.688
MTL-PRS-CS	0.043	0.763	5

(h) Type II diabetes

Model	Prediction pseudo R2 of PRS	AUC	Risk ratio between top 10% and bottom 10% PRS
PT (UKBB)	0.012	0.692	2.44
Lsum (UKBB)	0.031	0.708	2.8
TL-PRS-Lsum (UKBB)	0.033	0.708	2.917
PRS-CS (UKBB)	0.033	0.71	2.68
TL-PRS-CS (UKBB)	0.037	0.712	3.238
PT (BBJ)	0.014	0.693	1.867
Lsum (BBJ)	0.03	0.707	2.75
TL-Lsum (BBJ)	0.029	0.707	4.062
PRS-CS (BBJ)	0.035	0.708	2.846
TL-PRS-CS (BBJ)	0.047	0.717	3.889
PT-multi	0.023	0.701	2.583
Lsum-multi	0.048	0.72	4.688
MTL-PRS-Lsum	0.049	0.72	8.444
PRSCSx	0.048	0.719	3.217
MTL-PRS-CS	0.056	0.723	5.286

Table S5. Prediction accuracy of different PRS construction methods in analyses of eight traits in the African cohort of UK Biobank. The approach with highest prediction R^2 is highlighted with bold.

(a) HDL

Model	Prediction R ² of PRS	Mean difference between top 10% and bottom 10% PRS
PT (UKBB)	0.045	0.228
Lsum (UKBB)	0.042	0.287
TL-PRS-Lsum (UKBB)	0.045	0.31
PRS-CS (UKBB)	0.05	0.236
TL-PRS-CS (UKBB)	0.054	0.265
PT (BBJ)	0.035	0.259
Lsum (BBJ)	0.047	0.345
TL-Lsum (BBJ)	0.05	0.347
PRS-CS (BBJ)	0.047	0.265
TL-PRS-CS (BBJ)	0.048	0.325
PT-multi	0.052	0.24
Lsum-multi	0.062	0.341
MTL-PRS-Lsum	0.064	0.317
PRSCSx	0.071	0.321
MTL-PRS-CS	0.072	0.33

(b) LDL

Model	Prediction R2 of PRS	Mean difference between top 10% and bottom 10% PRS
PT (UKBB)	0.012	0.388
Lsum (UKBB)	0.033	0.625
TL-PRS-Lsum (UKBB)	0.058	0.779
PRS-CS (UKBB)	0.022	0.552
TL-PRS-CS (UKBB)	0.028	0.506
PT (BBJ)	0.028	0.474
Lsum (BBJ)	0.048	0.595
TL-Lsum (BBJ)	0.068	0.795
PRS-CS (BBJ)	0.023	0.421
TL-PRS-CS (BBJ)	0.028	0.565
PT-multi	0.03	0.531
Lsum-multi	0.052	0.727
MTL-PRS-Lsum	0.068	0.926
PRSCSx	0.037	0.662
MTL-PRS-CS	0.044	0.721

(c) BMI

Model	Prediction R2 of PRS	Mean difference between top 10% and bottom 10% PRS
PT (UKBB)	0.028	3.416
Lsum (UKBB)	0.038	3.762
TL-PRS-Lsum (UKBB)	0.039	4.035
PRS-CS (UKBB)	0.032	3.48
TL-PRS-CS (UKBB)	0.034	3.399
PT (BBJ)	0.008	1.242
Lsum (BBJ)	0.013	1.911
TL-Lsum (BBJ)	0.013	2.466
PRS-CS (BBJ)	0.012	1.946
TL-PRS-CS (BBJ)	0.02	2.677
PT-multi	0.031	3
Lsum-multi	0.043	4.018
MTL-PRS-Lsum	0.043	3.676
PRSCSx	0.036	4.006
MTL-PRS-CS	0.042	4.057

(d) TG

Model	Prediction R2 of PRS	Mean difference between top 10% and bottom 10% PRS
PT (UKBB)	0.006	0.172
Lsum (UKBB)	0.011	0.271
TL-PRS-Lsum (UKBB)	0.011	0.263
PRS-CS (UKBB)	0.015	0.245
TL-PRS-CS (UKBB)	0.019	0.409
PT (BBJ)	0.006	0.207
Lsum (BBJ)	0.009	0.167
TL-Lsum (BBJ)	0.009	0.177
PRS-CS (BBJ)	0.004	0.138
TL-PRS-CS (BBJ)	0.008	0.209
PT-multi	0.009	0.233
Lsum-multi	0.013	0.267
MTL-PRS-Lsum	0.011	0.21
PRSCSx	0.016	0.257
MTL-PRS-CS	0.02	0.378

(e) SBP

Model	Prediction R2 of PRS	Mean difference between top 10% and bottom 10% PRS
PT (UKBB)	0.003	4.451
Lsum (UKBB)	0.011	7.015
TL-PRS-Lsum (UKBB)	0.011	7.015
PRS-CS (UKBB)	0.012	8.769
TL-PRS-CS (UKBB)	0.013	9.677
PT (BBJ)	0.001	3.39
Lsum (BBJ)	0.001	3.215
TL-Lsum (BBJ)	0.002	1.544
PRS-CS (BBJ)	0.004	4.379
TL-PRS-CS (BBJ)	0.003	2.579
PT-multi	0.003	4.826
Lsum-multi	0.011	7.113
MTL-PRS-Lsum	0.011	6.713
PRSCSx	0.013	8.61
MTL-PRS-CS	0.012	7.897

(f) DBP

Model	Prediction R2 of PRS	Mean difference between top 10% and bottom 10% PRS
PT (UKBB)	0.001	1.872
Lsum (UKBB)	0.004	2.579
TL-PRS-Lsum (UKBB)	0.004	2.579
PRS-CS (UKBB)	0.006	2.456
TL-PRS-CS (UKBB)	0.009	3.338
PT (BBJ)	0	1.046
Lsum (BBJ)	0.003	1.913
TL-Lsum (BBJ)	0.003	1.785
PRS-CS (BBJ)	0.002	2.082
TL-PRS-CS (BBJ)	0.002	3.39
PT-multi	0.002	2.523
Lsum-multi	0.006	2.426
MTL-PRS-Lsum	0.006	2.713
PRSCSx	0.007	3.944
MTL-PRS-CS	0.009	3.19

(g) CAD

Model	Prediction pseudo R2 of PRS	AUC of	Risk ratio between top 10% and bottom 10% PRS
PT (UKBB)	0.028	0.72	3.167
Lsum (UKBB)	0.003	0.694	4
TL-PRS-Lsum (UKBB)	0.01	0.704	2.6
PRS-CS (UKBB)	0.01	0.705	4.25
TL-PRS-CS (UKBB)	0.016	0.71	3.6
PT (BBJ)	0.002	0.693	1.556
Lsum (BBJ)	0.003	0.695	3.5
TL-Lsum (BBJ)	0.004	0.695	3
PRS-CS (BBJ)	0.006	0.698	1.75
TL-PRS-CS (BBJ)	0.005	0.696	2.5
PT-multi	0.019	0.713	4.667
Lsum-multi	0.005	0.697	2.4
MTL-PRS-Lsum	0.008	0.699	2.167
PRSCSx	0.009	0.701	2
MTL-PRS-CS	0.02	0.712	5

(h) Type II diabetes

Model	Prediction pseudo R2 of PRS	AUC	Risk ratio between top 10% and bottom 10% PRS
PT (UKBB)	0.005	0.734	1.6
Lsum (UKBB)	0.012	0.74	1.5
TL-PRS-Lsum (UKBB)	0.009	0.741	1.706
PRS-CS (UKBB)	0.022	0.745	2.455
TL-PRS-CS (UKBB)	0.022	0.748	4.5
PT (BBJ)	0.005	0.735	1.643
Lsum (BBJ)	0.003	0.732	1.533
TL-Lsum (BBJ)	0.002	0.732	1.636
PRS-CS (BBJ)	0.007	0.732	1.923
TL-PRS-CS (BBJ)	0.018	0.739	2.357
PT-multi	0.009	0.737	1.412
Lsum-multi	0.011	0.738	1.643
MTL-PRS-Lsum	0.012	0.739	1.643
PRSCSx	0.021	0.74	1.6
MTL-PRS-CS	0.026	0.747	3.5

Table S6. The top three methods for all 8 traits in the South Asian and African ancestries in terms of prediction R^2 . Single-source prediction methods (PT, Lsum, TL-PRS-Lsum, PRS-CS, TL-PRS-CS) based on UKBB and BBJ GWAS results and multi-source PRS methods (PT-multi, Lsum-multi, MTL-PRS-Lsum, PRS-CS_x, MTL-PRS-CS) were included in the comparison and our approaches were highlighted using bold.

Target population	trait	Best approach (rank 1)	Rank 2	Rank 3
South Asian	HDL	MTL-PRS-CS	MTL-PRS-Lsum	TL-PRS-CS(UKBB)
	LDL	MTL-PRS-Lsum	Lsum-multi	MTL-PRS-CS
	BMI	Lsum-multi	MTL-PRS-Lsum	MTL-PRS-CS
	TG	Lsum-multi	PRS-CS _x	MTL-PRS-CS
	SBP	MTL-PRS-Lsum	MTL-PRS-CS	PRS-CS _x
	DBP	MTL-PRS-CS	TL-PRS-CS(UKBB)	MTL-PRS-Lsum
	CAD	MTL-PRS-CS	PRS-CS _x	Lsum-multi
	T2D	MTL-PRS-CS	MTL-PRS-Lsum	PRS-CS _x
African	HDL	MTL-PRS-CS	PRS-CS _x	MTL-PRS-Lsum
	LDL	TL-PRS-Lsum(BBJ)	MTL-PRS-Lsum	TL-PRS-Lsum(UKBB)
	BMI	MTL-PRS-Lsum	Lsum-multi	MTL-PRS-CS
	TG	MTL-PRS-CS	TL-PRS-CS(UKBB)	PRS-CS _x
	SBP	TL-PRS-CS(UKBB)	PRS-CS _x	MTL-PRS-CS
	DBP	MTL-PRS-CS	TL-PRS-CS(UKBB)	PRS-CS _x
	CAD	PT(UKBB)	MTL-PRS-CS	PT-multi
	T2D	MTL-PRS-CS	PRS-CS(UKBB)	TL-PRS-CS(UKBB)