

Supplemental Figures For:

Not all mosquitoes are created equal: incriminating mosquitoes as vectors of arboviruses

Morgan P. Kain,^{1,2*} Eloise B. Skinner^{1,3}, Tejas S. Athni¹, Ana L. Ramirez⁴, Erin A. Mordecai¹, Andrew F. van den Hurk^{5*}

¹Department of Biology, Stanford University, Stanford, CA, 94305, USA

²Natural Capital Project, Woods Institute for the Environment, Stanford University, Stanford, CA 94305, USA

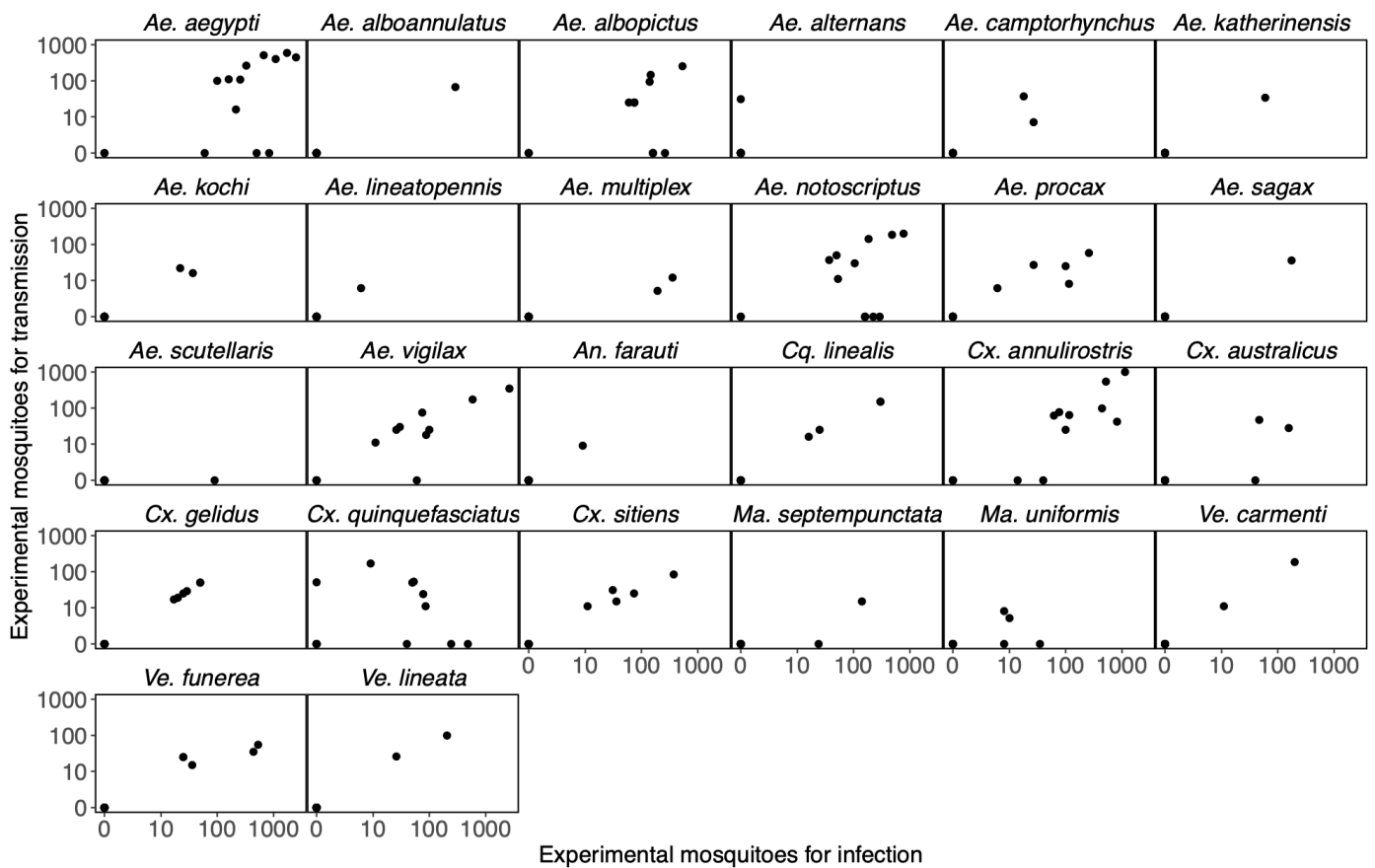
³Centre for Planetary Health and Food Security, Griffith University, Gold Coast, QLD, 4222, Australia

⁴Department of Pathology, Microbiology, and Immunology, University of California, Davis, Davis, CA 95616

⁵Public Health Virology, Forensic and Scientific Services, Department of Health, Queensland Government, Brisbane, Queensland, Australia

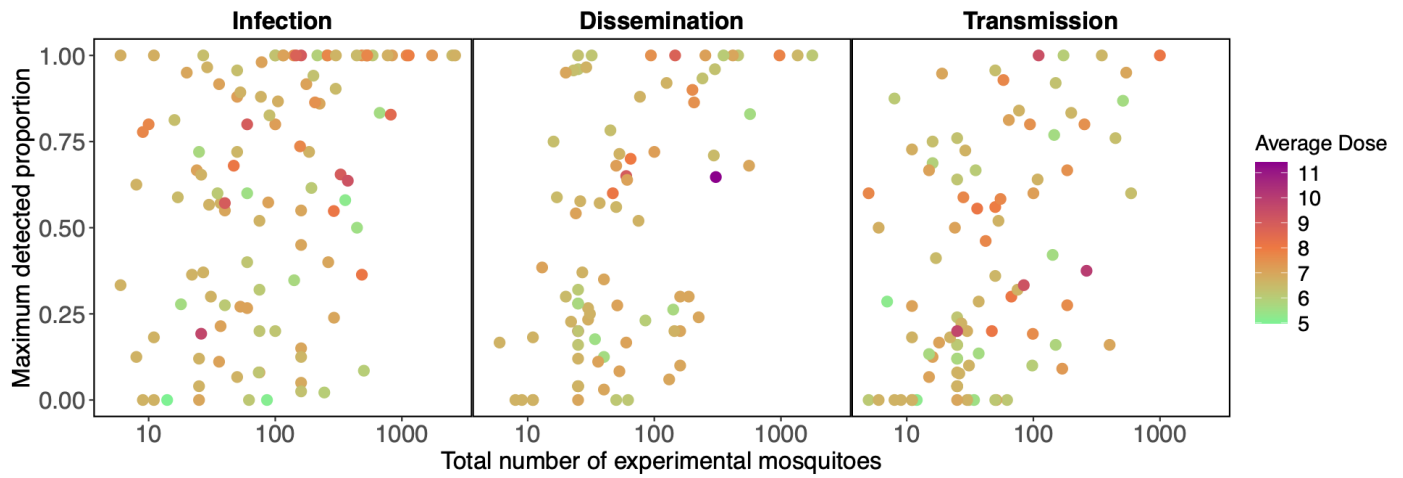
***Corresponding authors:** mkk6087@psu.edu (alt: morganpkain@gmail.com);

andrew.VanDenHurk@health.qld.gov.au

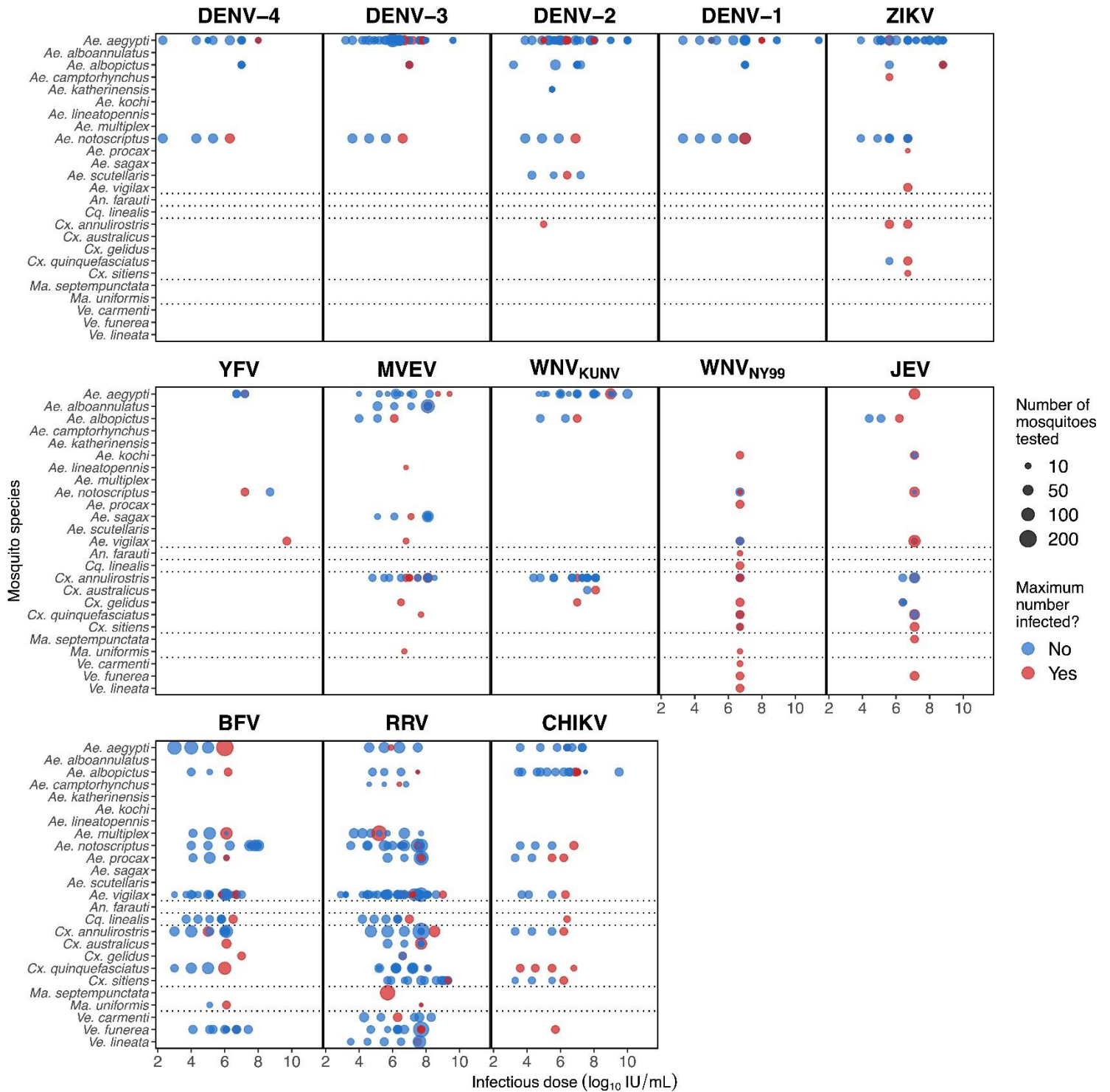


S1 Fig. Number of mosquitoes of each species assessed for infection and transmission in vector

competence experiments. Mosquito species frequently measured in infection experiments (total sample size across all experiments; X axis) were also more frequently measured in transmission experiments (total sample size across all experiments; Y axis). Each point for a mosquito species represents a different virus.

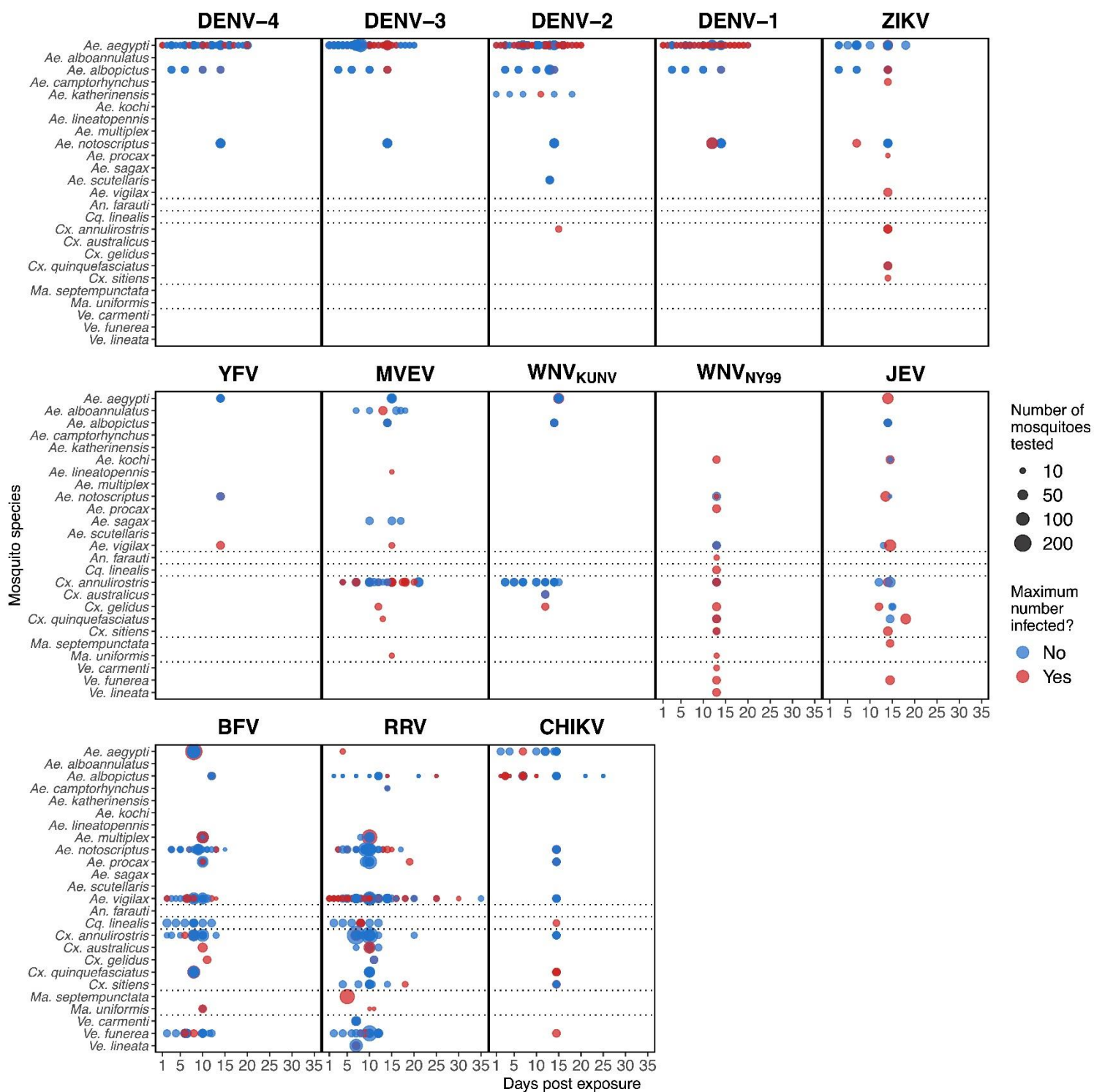


S2 Fig. Total number of mosquitoes assessed for infection, dissemination and transmission in vector competence experiments. Increased research effort leads to a higher maximum proportion for infection, dissemination, and transmission (logistic regression, $p < 0.05$). Increased dose does not lead to a detectable increase in maximum proportion (logistic regression, $p > 0.05$). Each point represents a single virus-species pair.

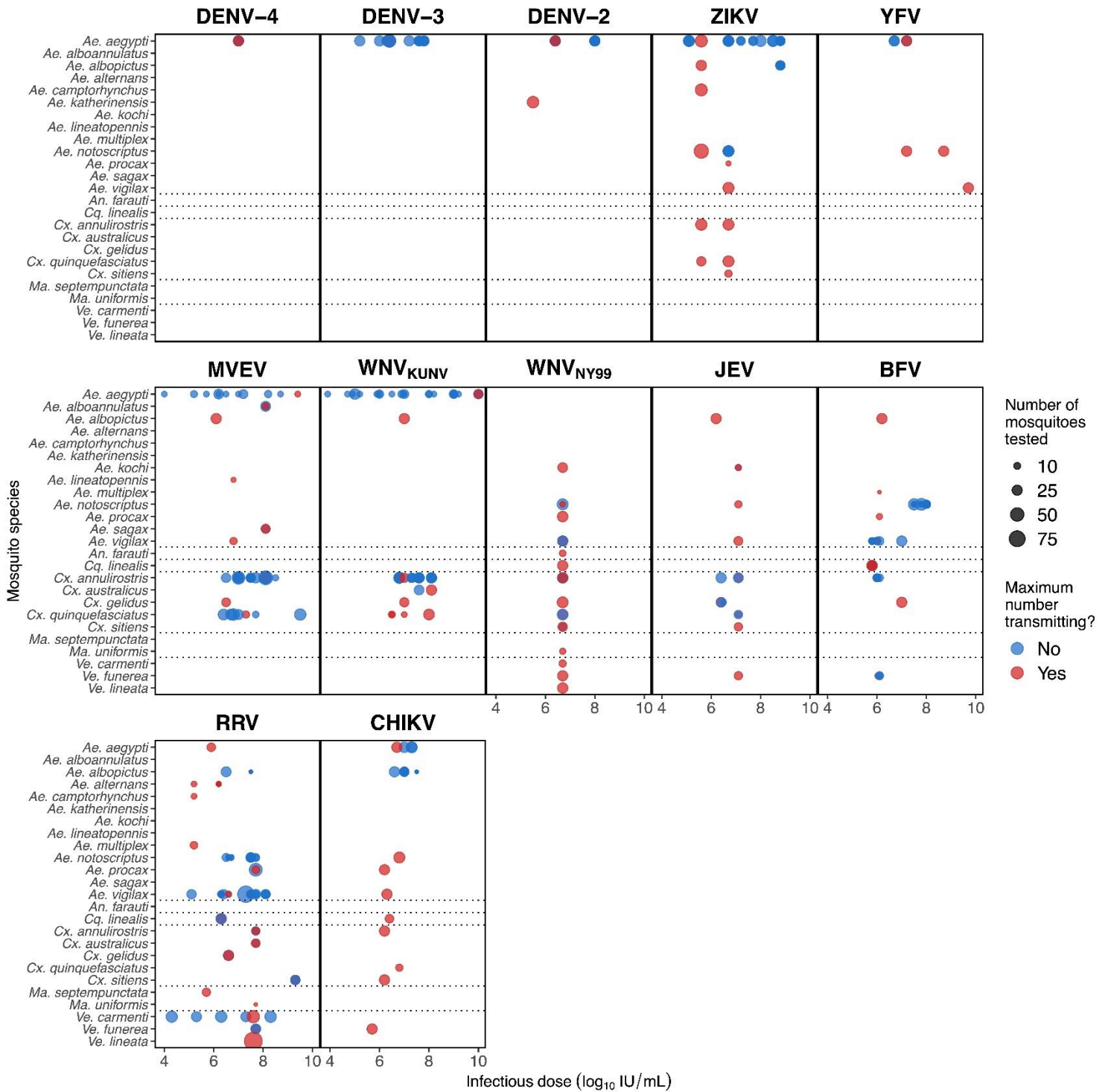


S3 Fig. Viral doses mosquitoes were exposed to across all laboratory experiments that measured infection.

Blue points show experimental doses that did not lead to the highest detected proportion of infected mosquitoes; red points show the infectious dose[s] that resulted in the highest observed infected proportion.

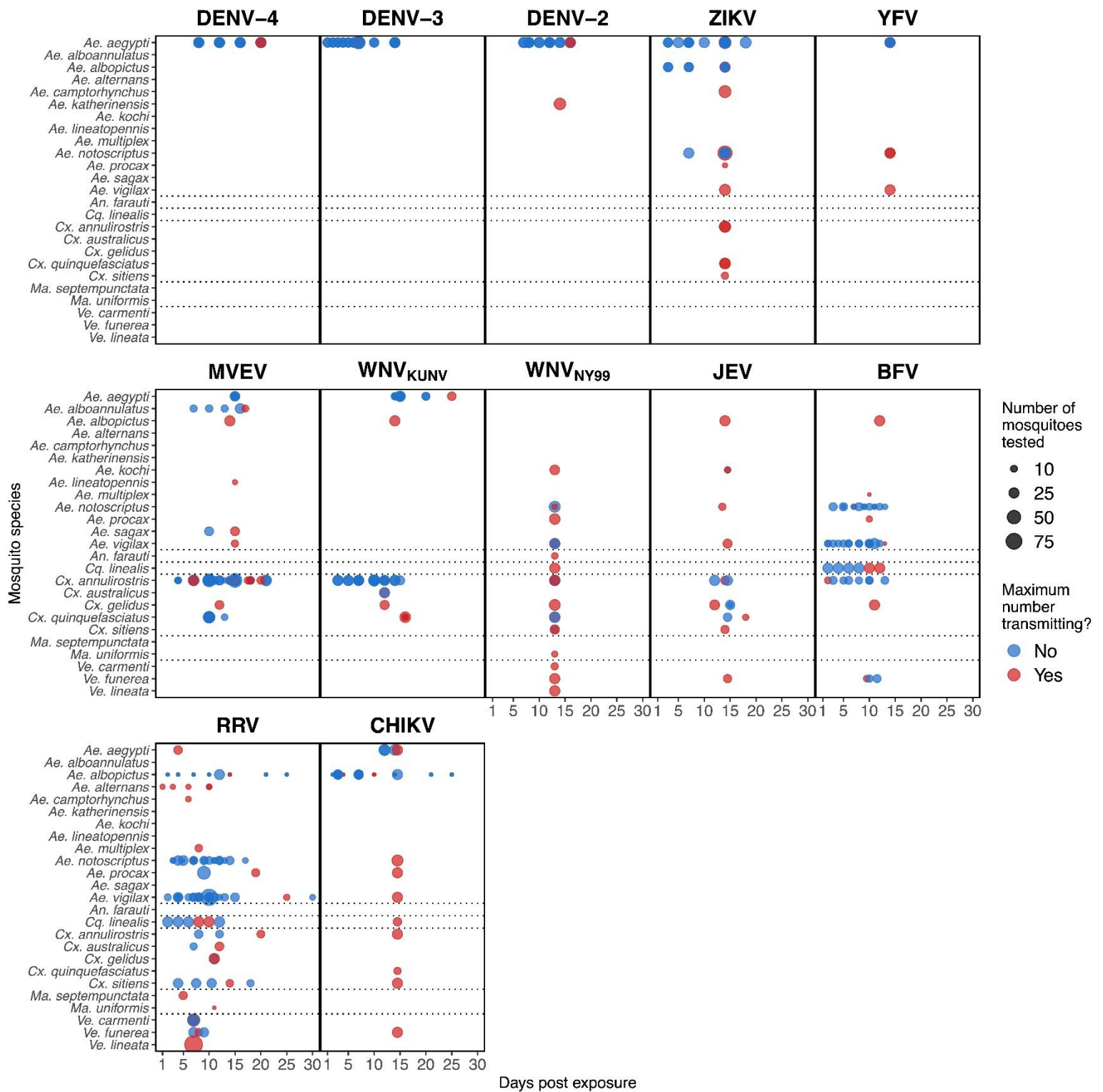


S4 Fig. Days post viral exposure on which mosquitoes were tested for infection status. Blue points show experimental days that did not lead to the highest detected proportion of infected mosquitoes; red points show the day[s] that resulted in the highest observed infected proportion.



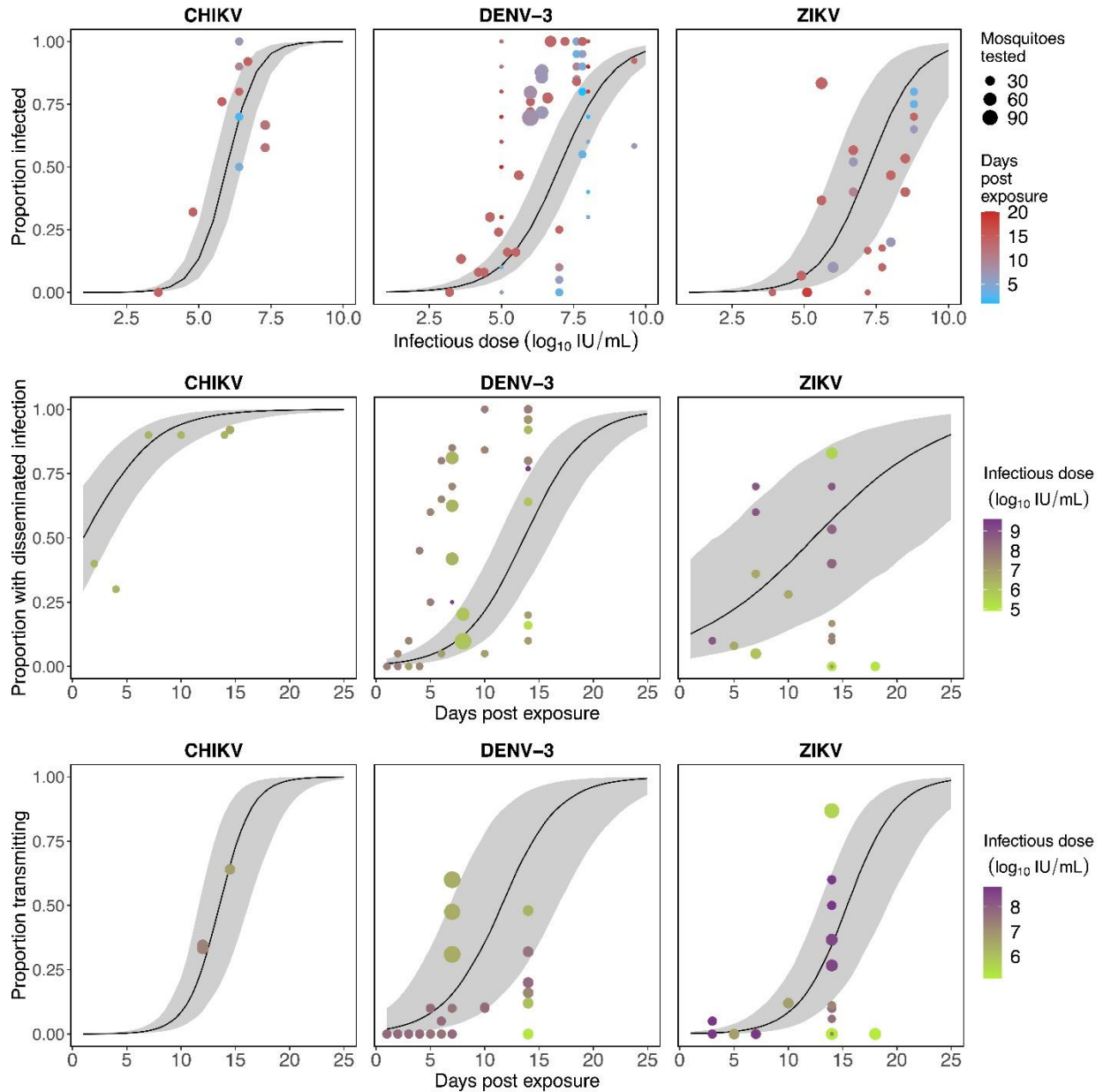
S5 Fig. Viral doses mosquitoes were exposed to across all laboratory experiments that measured transmission.

Blue points show experimental doses that did not lead to the highest detected proportion of transmitting mosquitoes; red points show the infectious dose[s] that resulted in the highest observed transmitting proportion.



S6 Fig. Days post viral exposure on which mosquitoes were tested for their ability to transmit viruses.

Blue points show experimental days that did not lead to the highest detected proportion of transmitting mosquitoes; red points show the day[s] that resulted in the highest observed transmitting proportion.



S7 Fig. Continuous functions for mosquito infection over dose (top), and for dissemination and transmission over time (middle and bottom, respectively). The results pictured here are from a generalized linear mixed effects model (GLMM) using *Aedes aegypti* for all viruses they have been tested with in the lab; however, here we only show the three viruses for which more than one data point exist for infection, dissemination, and transmission. For infection (top), medians (solid lines) and 95% confidence intervals (grey bands) are estimated using twelve days post inoculation; for dissemination (middle) and transmission (bottom) estimates are drawn for a dose of 7 \log_{10} IU/mL.