
1 **A Systematic Review and Meta-analysis of Polycystic Ovary Syndrome and**
2 **Mental Health among Black Asian Minority Ethnic populations**

3
4 Authors

5 Gayathri DELANEROLLE, ^{1*}, Salma AYIS^{2*}, Vanya BARZILOVA^{3**}, Peter
6 PHIRI,^{5,7***}, Yutian ZENG^{9**}, Sandali RANAWEERA,^{6**}, Ashish SHETTY^{3,4**}, Nyla
7 HAQUE¹², Debasish KAR¹, Kingshuk MAJUMDER⁸, Shanaya RATHOD⁵, Vanessa
8 RAYMONT,¹², Jian Qing SHI^{9,10***}, Dharani K. HAPANGAMA^{3,7***}

9
10 *Affiliations*

11 ¹University of Oxford, Nuffield Department of Primary Health Care Sciences

12 ²Kings College London

13 ³University of Liverpool

14 ⁴University College London Hospitals NHS Foundation Trust

15 ⁵University College London

16 ⁶Southern Health NHS Foundation Trust

17 ⁷Liverpool Women's NHS Foundation Trust

18 ⁸University of Southampton, School of Primary Care, Population Sciences and
19 Medical Education, Faculty of Medicine

20 ⁹University of Manchester NHS Foundation Trust

21 ¹⁰Southern University of Science and Technology

22 ¹¹Alan Turing Institute

23 ¹²Department of Psychiatry, University of Oxford

24

25 Shared first authorship*

26 Shared second authorship**

27 Shared last authorship***

28

29

30 **Conflicts of Interest**

31 PP has received research grant from Novo Nordisk, and other, educational from
32 Queen Mary University of London, other from John Wiley & Sons, other from Otsuka,
33 outside the submitted work.

34

35 SR reports research funding associated with other studies from Janssen, Otsuka and
36 Lundbeck.

37

38 GD reports grants from the NIHR and GSK, which have been received for studies
39 external to the ELEMI project.

40

41 DKH reports grants from MRC, Wellbeing for women, which has been received for
42 studies external to the ELEMI project.

43

44 The views expressed are those of the authors and not necessarily those of the NHS,
45 the National Institute for Health Research, the Department of Health and Social Care
46 or the Academic institutions.

47

48

49 **PROSPERO registration number:** CRD42020210863

50

51

52 **Correspondence to:** dharani@liv.ac.uk

53 Professor Dharani K. Hapangama

54 Department of Women's and Children's Health,

55 Institute of Life Course and Medical Sciences,

56 University of Liverpool

57 Liverpool Women's Hospital NHS Trust

58 Crown Street, Liverpool L8 7SS, United Kingdom

59

60

61

62

63

64

65

66

67

68

69

70

71

72 **Word count (abstract): X**

73 **Word count (main text): X**

74

75

76
77
78
79
80
81
82
83
84
85
86
87
88
89
90
91
92
93
94
95
96
97
98
99
100
101
102
103
104
105
106
107
108
109
110
111
112
113
114
115
116
117
118 **Abstract**

119

120 **Background:** Polycystic Ovary Syndrome (PCOS) is a chronic and a common
121 gynaecological condition impacting women of reproductive age. Women with PCOS

122 have hormonal, ovulatory and metabolic dysfunction resulting in multiple symptoms.
123 The correlation between hormonal disbalance and the impact on women's mental
124 health (MH) has been researched for decades. However, the prevalence among
125 different ethnicities has not been fully evaluated.

126

127 **Methods:** A systematic methodology was developed, and a protocol was published
128 in PROSPERO (CRD42020210863) and a systematic review of publications
129 between 1st January 1990- 30th January 2021 was conducted. Multiple electronic
130 databases were explored using keywords and MeSH terms. The finalised dataset
131 was analysed using statistical methods such as random-effect models, subgroup
132 analysis and sensitivity analysis.

133

134 **Findings:** We included 30 studies reporting on 3,944 PCOS women. Majority of
135 studies addressed depression anxiety, and common mental health. Studies had fair
136 to poor methodological quality and includes observational studies and Randomised
137 Clinical Trials (RCTs). Overall, 17% (95% CI: 7% to 29%) of women with PCOS have
138 clinical diagnosis of major or severe depression; 33% (95% CI: 26% to 40%) have
139 elevated depressive symptoms or a clinical diagnosis of depression; 41% (95% CI:
140 28% to 54%) report anxiety symptoms, and 31% (95% CI: 15% to 51%) have a form
141 a common mental health or are taking psychiatric medication for anxiety and / or
142 depression. The use of various tools to assess mental health symptoms was among
143 the reasons for the substantial heterogeneity across studies.

144

145

146 **Interpretation:**

147 PCOS is associated with an increased risk of mental health disorders including
148 depressive s, anxiety, and other mental health disorders. While BAME populations
149 account for about 20% of most of the samples studied, stratification by ethnicity was
150 rarely attempted which made it difficult to elucidate the MH impact of PCOS on
151 different communities.

152 Funding: Not applicable

153

154 **Keywords: Polycystic Ovary Syndrome, PCOS, BAME, Mental Health, Women's**

155 **Health and Wellbeing**

156

157

158

159

160

161

162

163

164

165

166

167

168

169

170

171

172

173

174

175

176

177 **Introduction**

178

179 Polycystic ovary syndrome (PCOS) is the most common endocrine disorder in
180 women of reproductive age with significant reproductive, metabolic, and
181 psychological implications. An estimated 8-13% of women of reproductive age are

182 affected,¹⁻⁵ with a widely quoted similar prevalence between different ethnicities.⁶
183 The Rotterdam criteria,^{5,7} which incorporates a combination of signs and symptoms
184 of androgen excess, ovarian dysfunction and polycystic ovarian morphology on
185 ultrasound is the globally accepted diagnostic criteria for PCOS. The phenotype
186 between different ethnicities, can vary markedly^{5,8,9} with PCOS sufferers from
187 Hispanic, East Asian, South Asian and Middle Eastern backgrounds displaying
188 higher prevalence of symptoms associated with hyperandrogenism^{8,9} than their
189 White counterparts. The precise aetiology of the syndrome is unclear, although
190 evidence suggests a genetic predisposition, and a role of environmental variables
191 including diet and lifestyle factors.^{10,11} The pathophysiology involves a dysfunctional
192 hypothalamic-pituitary-ovarian axis, with inappropriate gonadotropin-releasing
193 hormone (GnRH) pulsatility and increased pituitary secretion of luteinizing hormone
194 (LH).¹² Those affected with PCOS present with a wide spectrum of clinical symptoms
195 and features, which can be reproductive (oligomenorrhoea, hirsutism, subfertility),
196 metabolic^{13,14} (insulin resistance, type 2 diabetes, metabolic syndrome), and
197 psychological^{15,16} (depression, anxiety and low quality of life).
198
199 PCOS, due to its diversity in clinical presentation, remains undiagnosed in up to 70%
200 of women,³ this may lead to various clinical sequelae that impact and complicate
201 women's long-term health. For example women with PCOS have an increased risk
202 of consequential complications such as type 2 diabetes mellitus, cardiovascular
203 disease, endometrial cancer, pregnancy complications and psychological
204 conditions.¹⁷⁻²⁰
205
206 One area lacking in PCOS research are the MH correlates of the syndrome. The
207 limited evidence available suggests that women with PCOS have higher rates of

208 depression, anxiety, binge eating disorders, bipolar disorder and other psychological
209 symptoms,²¹⁻²³ most likely due to the androgenic, reproductive, and metabolic
210 disorders or due to the associated symptoms of the disorder.^{24,25} Current treatment
211 for PCOS focuses on physical symptom control and reducing complication rates.²⁶ At
212 a global level, currently, there is limited recognition of mental health (MH) symptoms
213 in women with PCOS.⁵ However, background MH sequelae may significantly impact
214 treatment adherence and patient quality of life.⁵

215

216 MH disorders account for 14% of global burden of disease.²⁷ Yet significant
217 disparities persist in providing access to MH services for Black, Asian and Minority
218 Ethnic (BAME) populations.²⁸ This is further exacerbated by the underreporting of
219 MH symptoms in BAME individuals who are less likely to contact their general
220 practitioner regarding their MH compared to their White British counterparts.²⁸ This
221 can be explained by a combination of personal and environmental factors, including
222 inability to recognise MH symptoms, cultural identity and stigma, language barrier
223 and poor communication with healthcare professionals.²⁸ Therefore, the prevalence
224 of MH disturbances in BAME women with PCOS remains unclear. The MH symptom
225 prevalence rates may differ significantly across races and ethnicities for women with
226 PCOS in the form of either symptoms and/or psychiatric disorders. Understanding
227 the multifactorial and heterogenic nature of PCOS presentation in BAME women is
228 crucial to improve clinical and patient reported outcomes.

229

230 An assessment of the existing evidence is vital to generate comprehensive
231 knowledge and clinical practice improvements that are suitable for BAME

232 populations. Therefore, a systematic review was designed and developed within this
233 study.

234
235
236
237
238
239
240

241 **Methods**

242

243 A systematic methodology was developed and peer reviewed prior to publication in
244 PROSPERO in accordance with Preferred Reporting Items for Systematic Reviews
245 and Meta-Analyses (PRISMA).

246

247 *Research question*

248 To assess the prevalence of the disease sequelae between PCOS and mental
249 health symptoms and disorders among BAME populations.

250

251 *Search Strategy*

252 The search strategy involved multiple databases of EMBASE, PubMed, PsycINFO,
253 Science direct and Web of Science from inception to the 30th of May 2021. The
254 searches were conducted through references initially followed by the review of their
255 abstracts and tracking of citations.

256

257 *Eligibility criteria*

258 All peer review publications in English were included to this study. Key words and
259 MeSH terms included *depression, polycystic ovary syndrome, PCOS, bipolar,*
260 *dysthymia, major depressive disorder, anxiety, psychosis, somatic symptoms,*

261 *psychotic disorders, trauma, stress, post traumatic stress (PTSD), obsessive-*
262 *compulsive spectrum disorders, ethnic minorities, BAME, BME and eating disorders.*
263 Studies that included a psychiatric diagnosis or MH symptomatologies based on a
264 clinically structured diagnostic interview and/or clinically accepted screening tools
265 were eligible for this study. Meeting abstracts were excluded if there was no full
266 paper available.

267

268 *Data extraction and analysis*

269 Predefined clinical variables were used as part of the data extraction of rates of
270 depression, anxiety, stress, schizophrenia, psychosis and PTSD within the search
271 strategy. An evidence synthesis methods protocol was developed and has been
272 shown as supplementary document 1. The data extraction process was completed
273 as per the PRISMA guidelines whilst, the refinement protocol has been shown in the
274 supplementary document 1. The extracted data was reviewed using Endnote and
275 Microsoft Excel by 3 reviewers prior to the statistical analysis. All studies collated
276 were categorised based on MH symptoms versus psychiatric disorders and, where
277 possible synthesised based on prevalence and 95% confidence intervals.
278 Prevalence tables were developed to indicate any subgroup categories including
279 geographical location, race, heterogeneity, age, obesity scores and ethnicity.
280 Systematically included studies that did not meet the meta-analysis criteria due to
281 insufficient statistical data or poor quality were narratively synthesised and analysed
282 based on the disease, family, clinician and patient perspective. The narration would
283 include the reporting of common themes including potential barriers to identify and
284 report any themes or sub-themes that may be present in clinical guidelines.

285

286

287

288

289 *Outcomes*

290 The primary outcome was to assess the odds ratios and p-values associated with a
291 possible mental health symptomatologies and/or psychiatric disorders among PCOS
292 BAME populations.

293

294 *Statistical analysis plan*

295 Depression was measured by a range of scales and several tools including the
296 Diagnostic and Statistical Manual of Mental Disorders (DSM)²⁹; the Patient Health
297 Questionnaire (PHQ)³⁰; the Hospital Anxiety and Depression (HAD)³¹; Beck
298 Depression Inventory (BDI)³²; Montgomery Åsberg Depression Rating Scale
299 (MADRS-S)³³; Center for Epidemiologic Studies Depression (CES-D)³⁴; Reynolds
300 Adolescent Depression Scale, 2nd Edition(RADS-2)³⁵; Quick Inventory Depressive
301 Symptomatology (QIDS)³⁶; Self-Reported Questionnaire Scale-20 (SRQ-20)³⁷; the
302 Generalized Anxiety Disorder (GAD)³⁸; the International Neuropsychiatric Interview
303 (MINI),³⁹ use of antidepressants or use of anti-anxiety medication; a diagnosis by a
304 MH professional, and self-reported history of depression.

305

306 The types of mental illness considered by most studies were anxiety, depression,
307 both anxiety and depression, and generalised mental wellbeing. The prevalence of
308 these was synthesised using a meta-analysis.

309

310 For the purpose of this study, depression was defined as a major depression
311 diagnosis or elevated depressive symptoms, as reported within the systematically
312 included studies. The diagnosis of major depressive disorder (MDD) was based on
313 clinical review which included suicidal ideations, or provided a definition of MDD
314 based on thresholds of tools used, for example, BDI ≥ 17 , CES-D ≥ 24 .^{40,41} Elevated
315 depression included clinical depression, antidepressants use, and / or a threshold for
316 mild to moderate depression based on the scale used for assessment, for example
317 BDI ≥ 11 , HAD-D ≥ 8 , and CES-D ≥ 16 . For anxiety, a combinational approach was
318 used where the use of the term anxiety or use of anxiety medications were pooled
319 together, due to overlapping definitions, and lack of clear cuts for severity levels.
320 Generalised mental wellbeing on the other hand was defined, as having both
321 depression and anxiety, use of medication for psychiatric disorders as reported
322 within the studies, self-reported MH symptoms, or reported under the term “common
323 mental health” (CMH) by a study authors based on scales such as SF-36.⁴²⁻⁴⁴

324

325 A Random-effects models were used to calculate overall summary estimates of
326 anxiety, depression, and CMH in PCOS patients.⁴⁵ The routine “metaprop” of the
327 software STATA’s (V.16) which provides pooled summary of proportions and 95%
328 confidence intervals based on Newcombe exact binomial estimation was used.^{46,47}

329 The routine also estimates the I-squared statistics which describes the percentage of

330 variation across studies that is due to heterogeneity rather than chance. (Higgins et
331 al. 2003)⁴⁸

332

333 All studies systematically included demonstrate a range of study designs including of
334 observational and randomised clinical trials (RCTs). Where comparisons were made
335 between PCOS and non-CPOS groups in a study, only the PCOS groups were
336 included. At situations where PCOS population were stratified by certain criterion, for
337 example body mass Index (BMI) or age, the strata were combined where the sample
338 size was smaller than 30 for each group, and an overall prevalence was calculated.
339 For larger groups, each was treated a separate group. Sensitivity analyses in
340 addition, were used to highlight differences across strata where a criterion proven to
341 have an impact on heterogeneity.

342

343 Publication bias was assessed using funnel plots and Egger test, for symmetry and
344 small study effects where the number of studies exceeded the recommended 10.^{49,50}

345

346 *Risk of Bias (Quality assessment)*

347 The Newcastle-Ottawa-Scale (NOS) was used to assess the risk of bias (RoB) for all
348 systematically included studies as demonstrated within the RoB table.

349

350 *Sensitivity analysis*

351 Sensitivity analysis was used to explore causes of heterogeneity. BMI, and tool of
352 assessment of assessments were used for stratification.

353

354

355

356 **Results**

357

358 Figure 1 displays the estimated prevalence and 95% confidence intervals (CI) for the
359 mental health conditions classified as: (a) Major depressive disorder, (b) Elevated
360 existing depression, (c) Anxiety and (d) Common mental health.

361

362 Overall, major depressive disorder affected 17% of PCOS patients, and vary
363 between 0% to 67%. All studies except two have estimated a prevalence \geq 10%. The
364 highest prevalence was reported in a Swedish study, followed by two Middle
365 Eastern (ME) studies, with a prevalence of 67%, 29%, and 22% for the three studies
366 respectively.⁵¹⁻⁵³ Substantial heterogeneity, I^2 of 93.98% was reported between
367 regions, also considerably high within USA studies, I^2 of 71.33% but the two ME
368 studies were homogeneous, Figure 1 (a).

369

370 Depression was summarised from 24 studies, including 3157 women with PCOS.
371 The estimated average was 33% (95% CI: 26% to 40%). Where the estimated
372 prevalence was stratified by region, fairly similar estimates on average, were noted
373 across regions, with India being the only exception where the the highest prevalence
374 of 64% (95% CI: 55% to 73%) was reported. Substantial heterogeneity observed
375 within regions and between regions. The overall heterogeneity was 93.24%.

376

377 For anxiety, Figure 1 (C), the highest prevalence of 75% was seen in a USA study,
378 with 78% white and 22% non-white, mean age 33 years (SD: 7.5), followed by a
379 prevalence of 74% in a European study with 80% white, 18% Asian, age 33 years
380 (7.4), while the two studies didn't report BMI.^{54,55} Middle East, and Australia/ NZ

381 follow with an estimated averages of 42% and 38% respectively, and the overall
 382 estimated prevalence was 41% (95% CI: 28% to 54%).

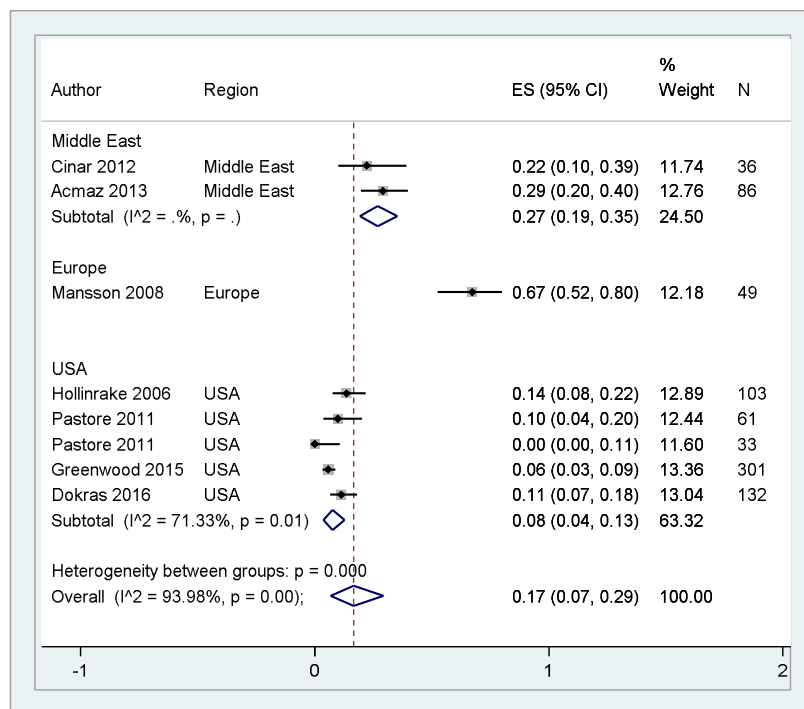
383

384 Figure 1 (d), common mental health overall prevalence was 31% (95% CI: 15% to
 385 51%). Substantial heterogeneity shown by USA studies, only one study from ME,
 386 and one from Brazil were included. A substantial lack of consistency across studies
 387 was reflected by a heterogeneity I^2 of 97.29%.

388

389 Figure 1. The Prevalence of Mental Health Indicators in Women with PCOS

390 (a) Major depression by region

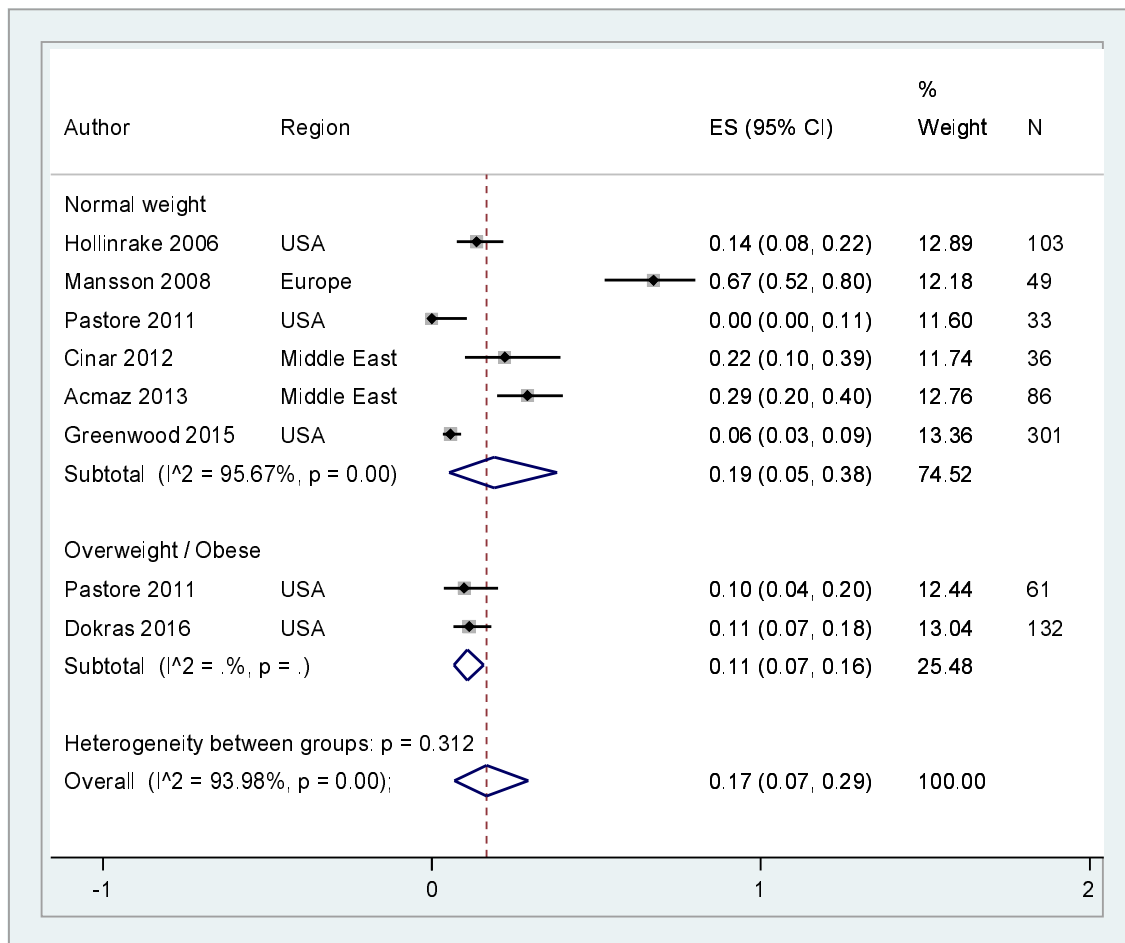


391
 392

393 Supplementary a1: Major depression by BMI (sensitivity)

394

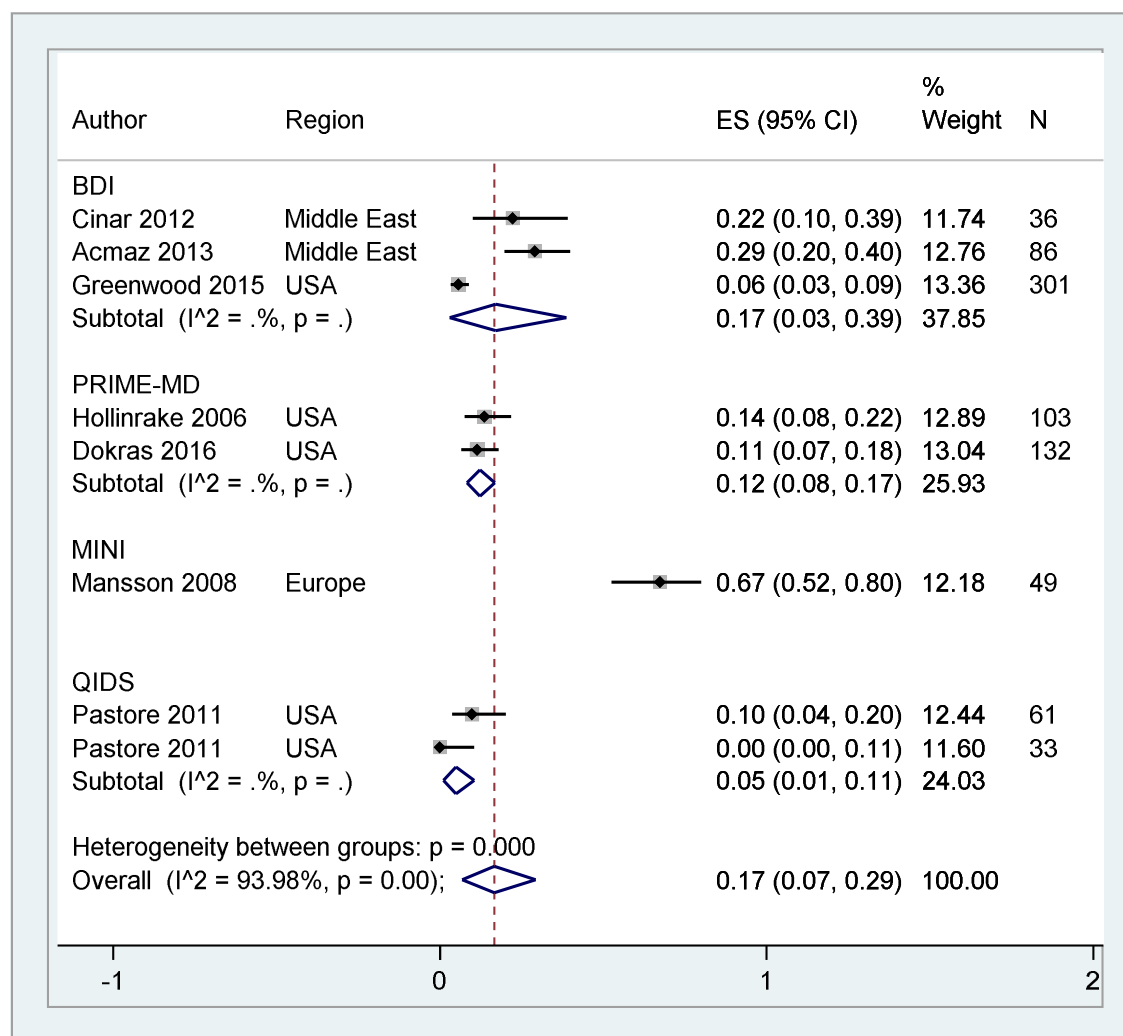
395



396
397

398

399 Supplementary a2: Major depression by assessment tool (sensitivity)



400

401

402 QIDS: Quick Inventory of Depressive Symptomatology-Self Report 16,¹

403

404 MINI: MINI International Neuropsychiatric Interview,³

405

406

407

408

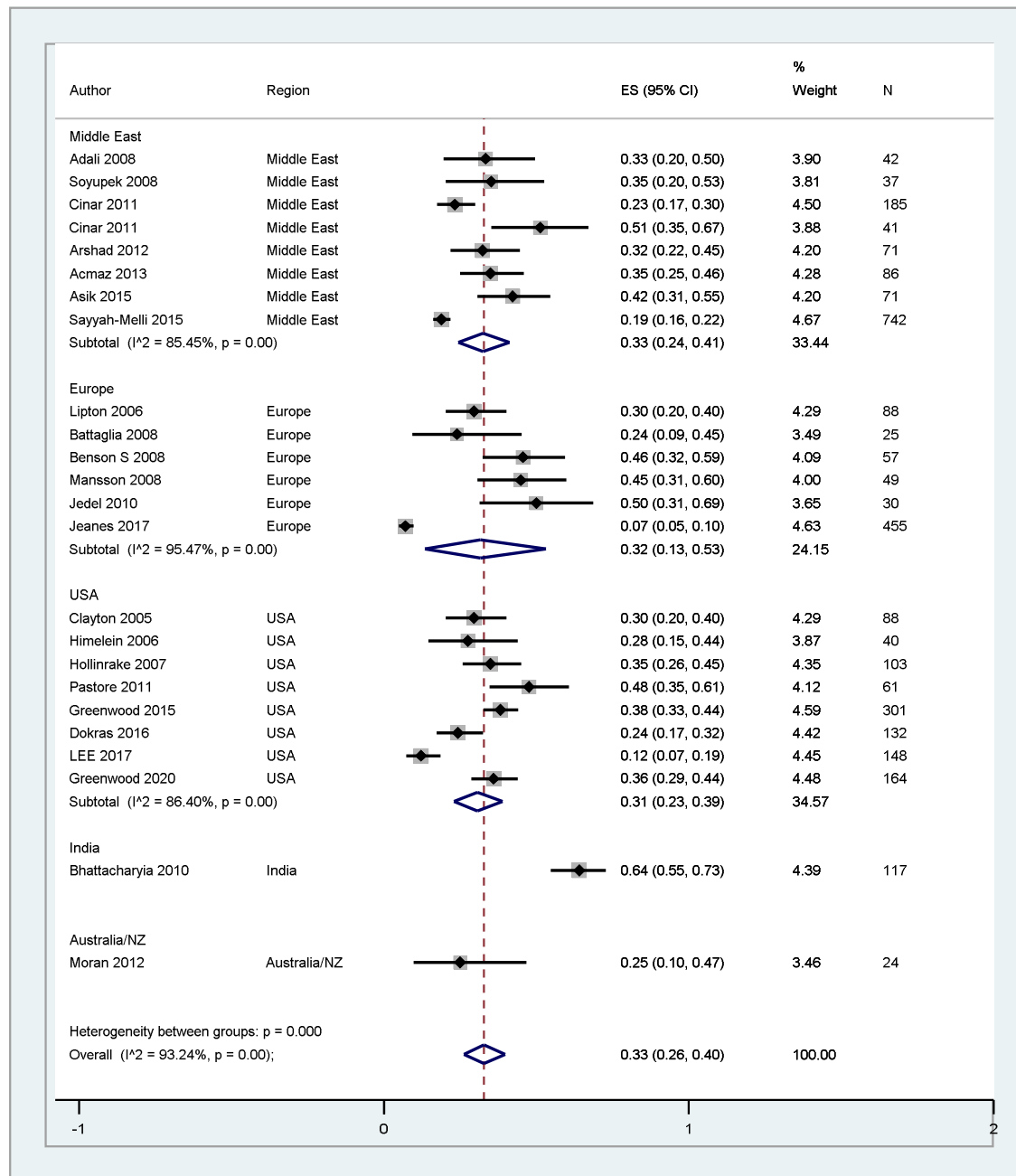
409

410

411

412 (b) Elevated depression by region

413



414

415

416

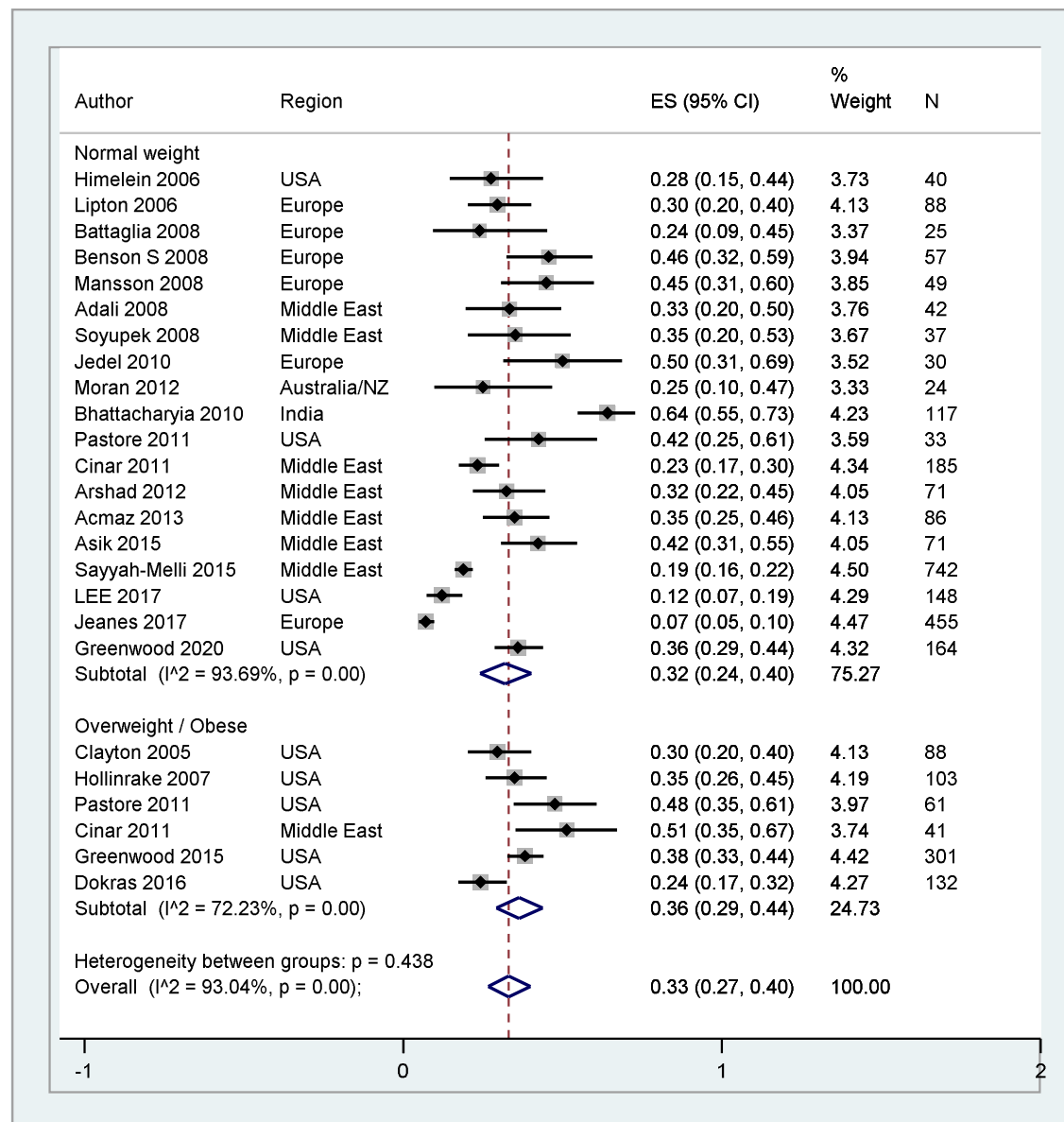
417

418

419

Supplementary b1: elevated depression by BMI (sensitivity)

420



421

422

423

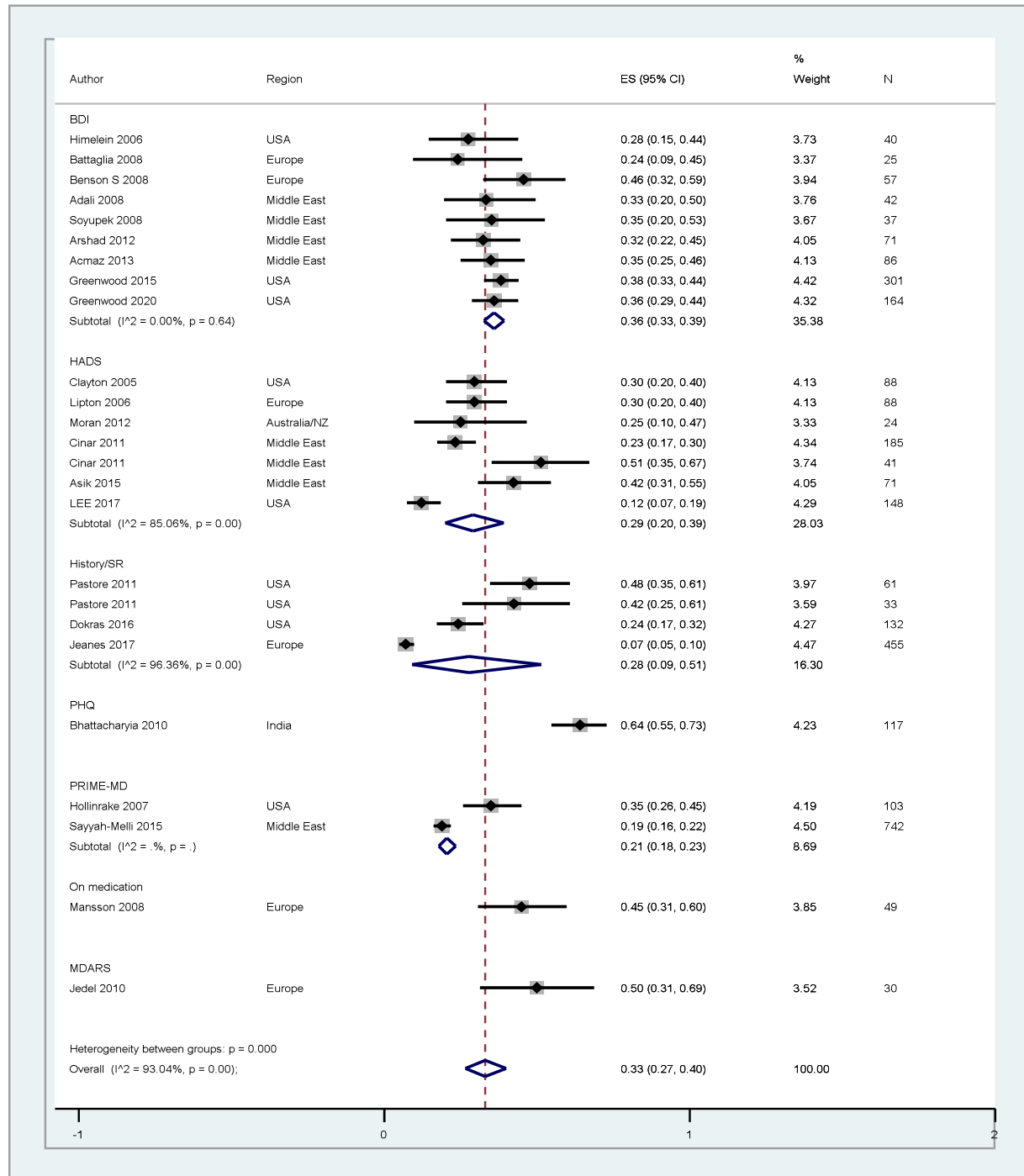
424

425

426 Supplementary b2: elevated depression by assessment tool (sensitivity)

427

428



429

430

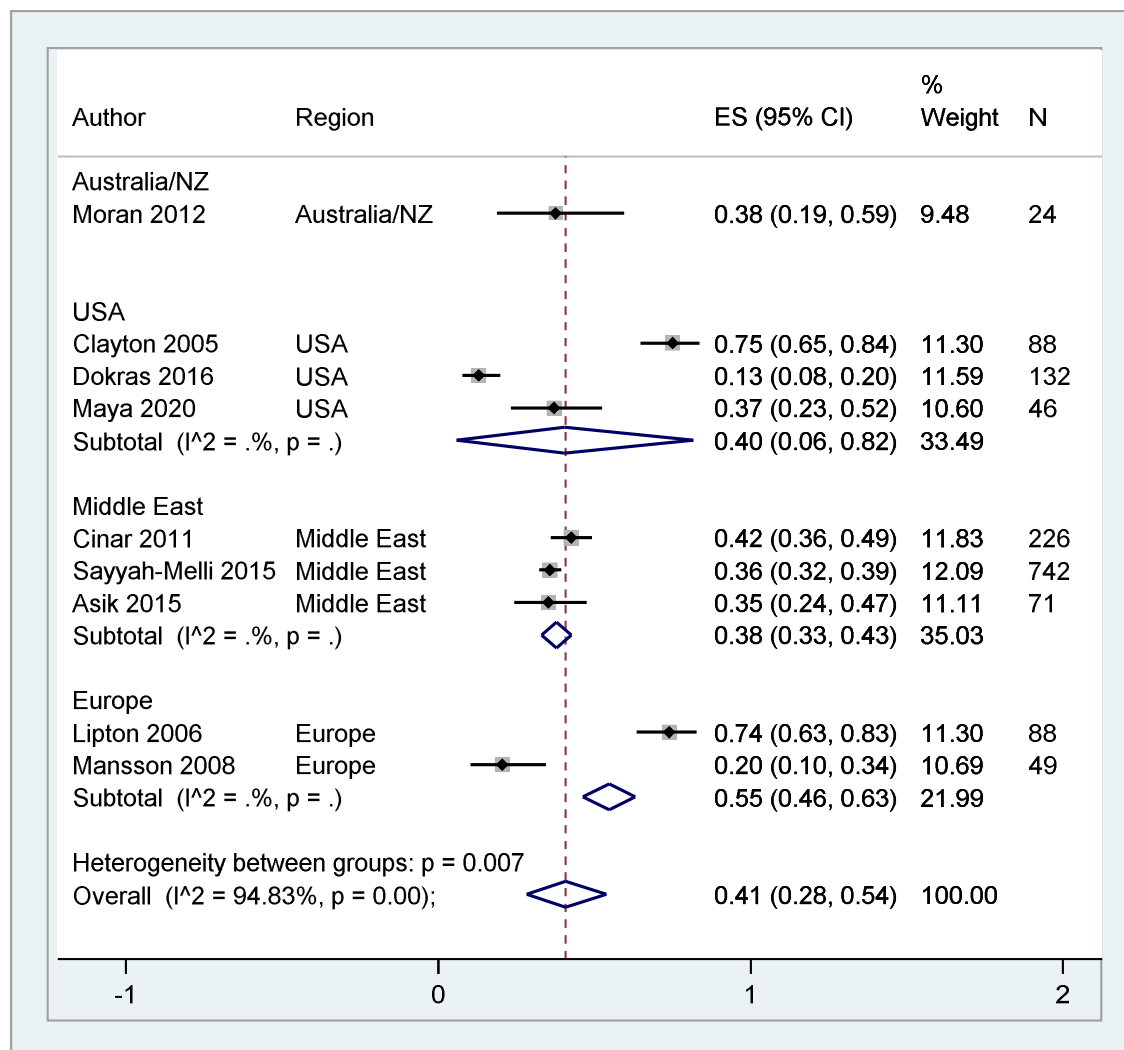
431

432

433

434 (c) Prevalence of anxiety by region

435



436

437

438

439

440

441

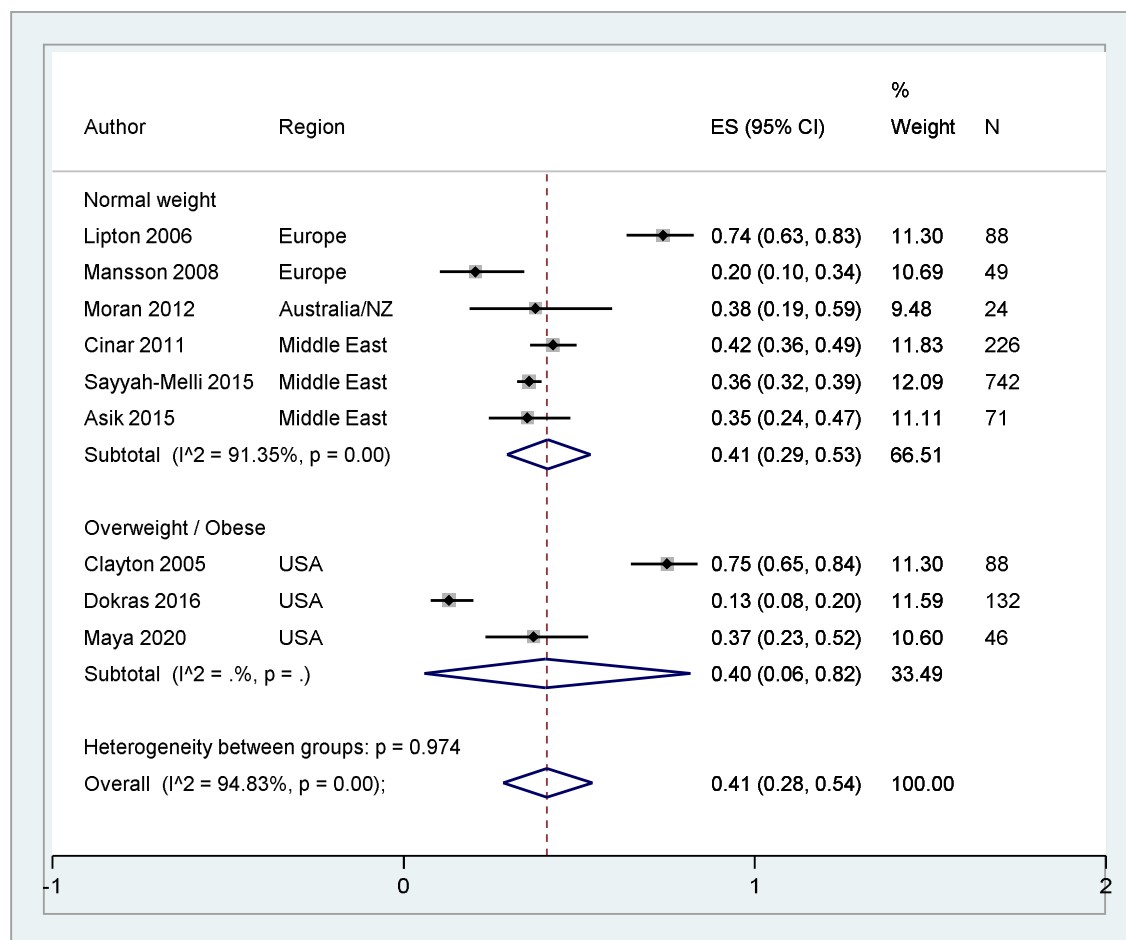
442

443

444

445 **Supplementary c1: Prevalence of anxiety by BMI (sensitivity)**

446

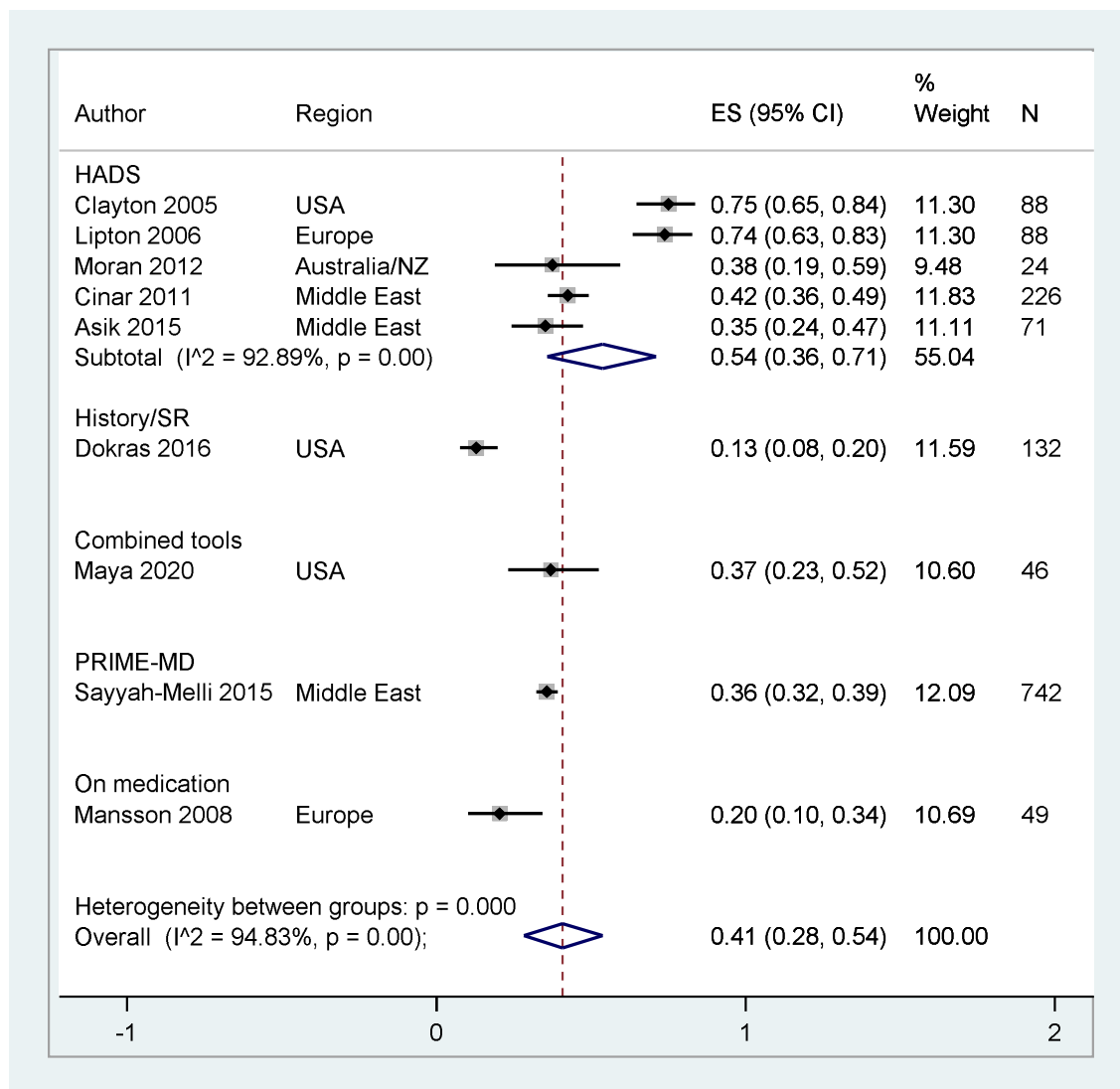


447

448

449 **Supplementary c2: Prevalence of Anxiety by assessment tool (sensitivity)**

450



451

452

453

454

455

456

457

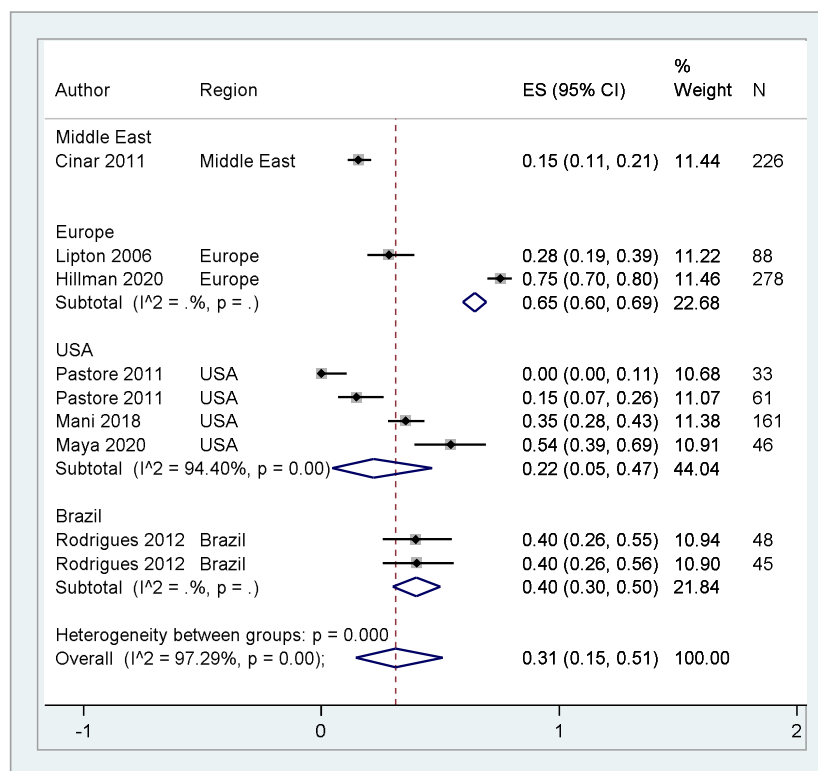
458

459

460

461 (d) Common mental health by region

462

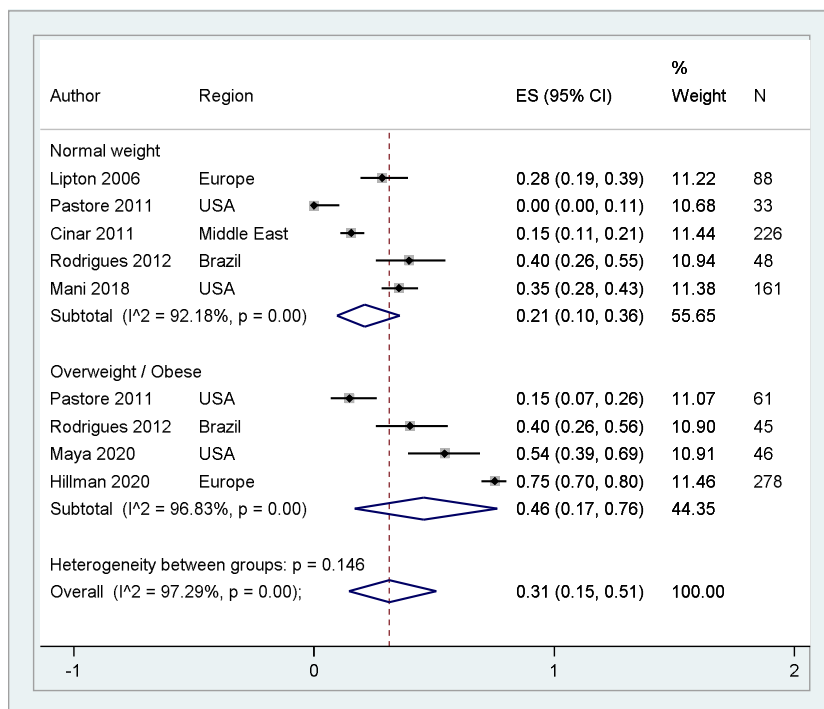


463

464

465 Supplementary d1: Common mental health by BMI (sensitivity)

466

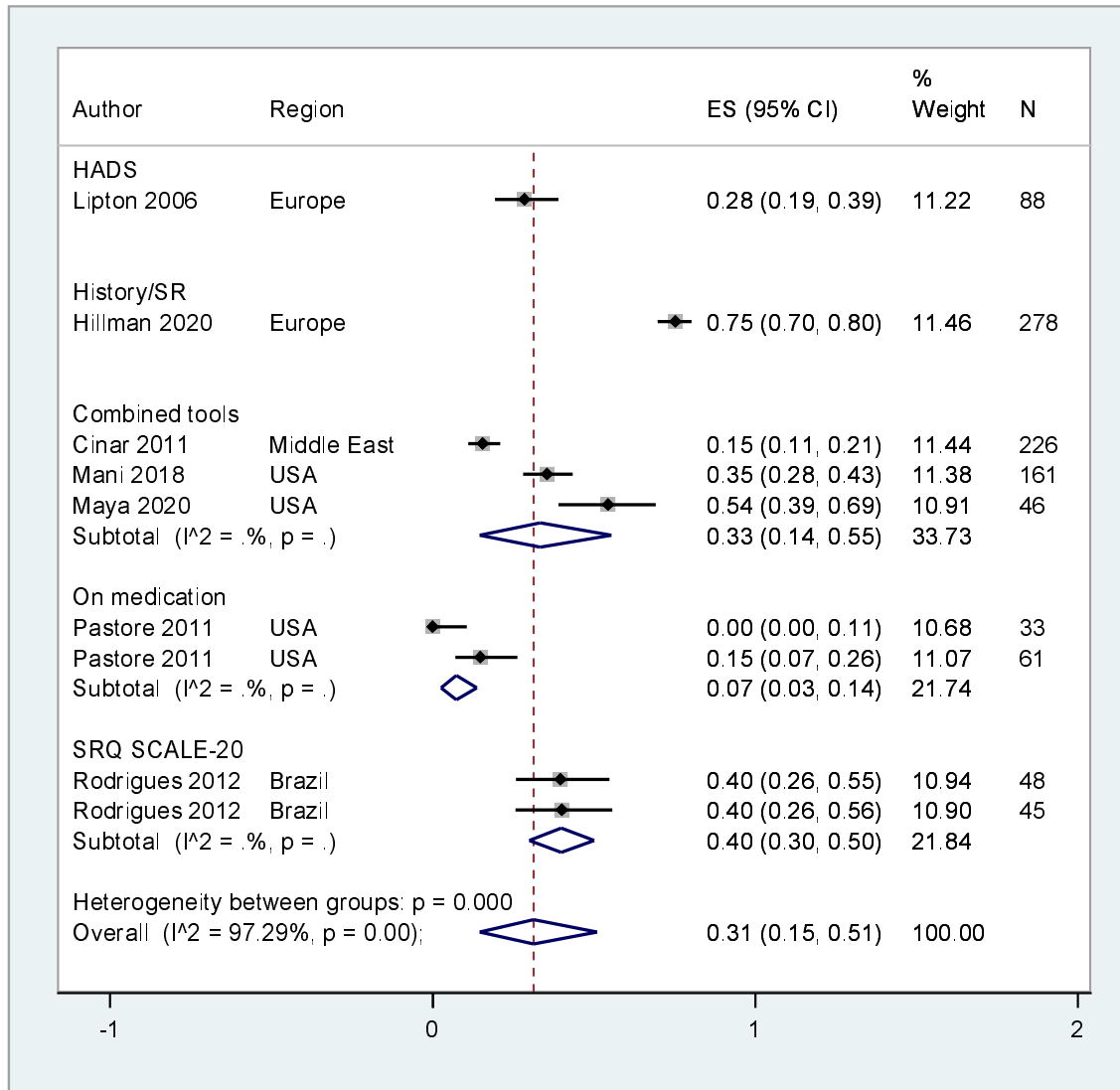


467

468

469 Supplementary d: Common mental health by assessment tool (sensitivity)

470

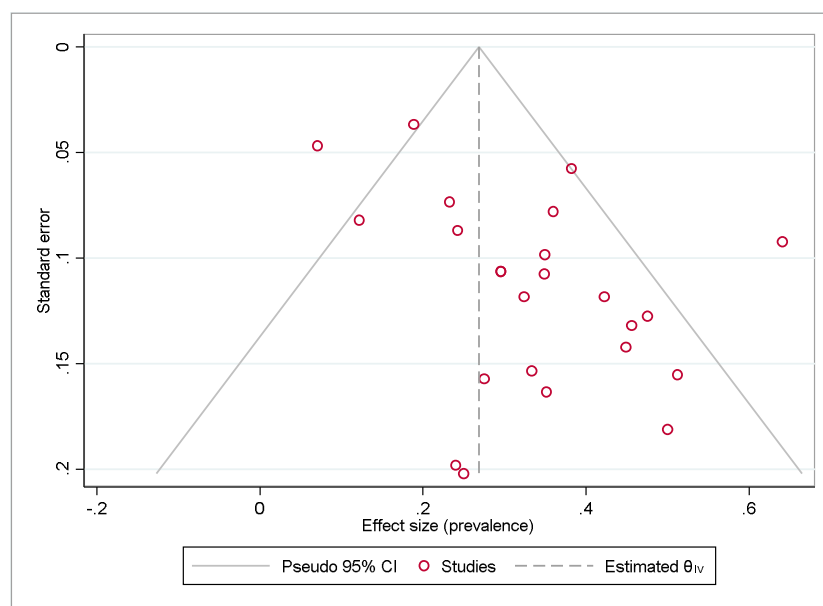


471

472 SRQ SCALE-20: Self-reported questionnaire scale-20, 2

473 **FIGURE 2.**

474 (a) Funnel Plot (Prevalence of elevated depression)



475

476

477 Note. The figure visually supports an asymmetrical shaped funnel plot. The no small
478 study effect null hypothesis (H_0 : no small-study effect) may therefore be rejected.

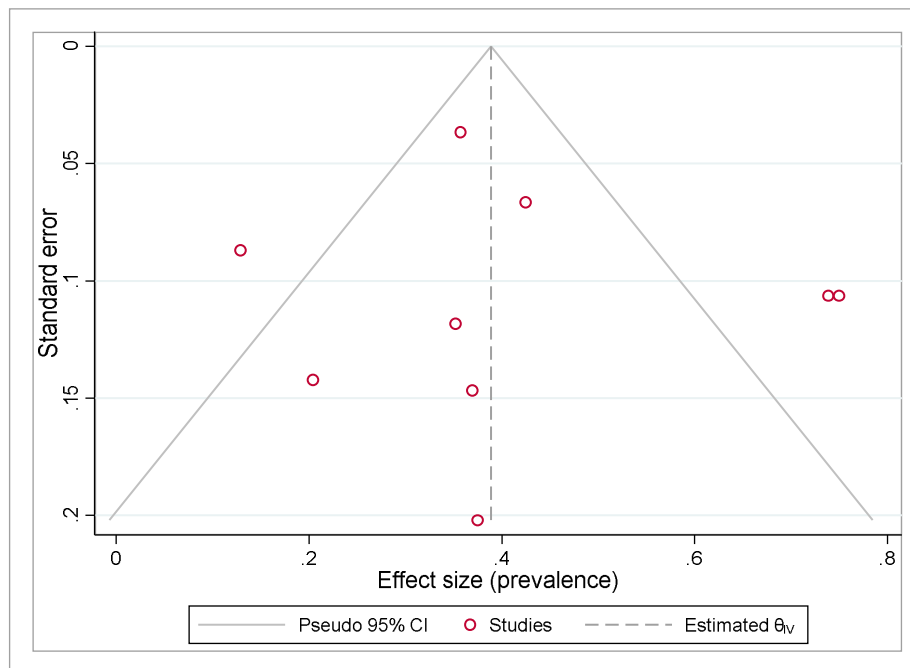
479 Using Egger test of H_0 : no small-study effects, p value = 0.004.

480

481

482 (b) Funnel Plot (Prevalence of anxiety)

483



484

485

486

487 (c)

488 Note. The figure visually supports the symmetry of the effect size distribution. The
489 correlation between effect size and the corresponding standard error was not
490 strong, Egger's test p value = 0.65 supporting no small-study effect (symmetry)
491 hypothesis.

492

493 Discussion

494

495 The meta-analysis identified 11 studies which reported a 20% prevalence of
496 common MH symptoms of anxiety and depression primarily. However, there was
497 substantial heterogeneity across all studies which is reflected by I^2 of 97.29%.
498 Sources contributing to this heterogeneity may include differences in age range,
499 body mass index (BMI), region, study design (including psychiatric assessments

500 used), sample size and methodology, population ethnicity and other characteristics.
501 The narrative synthesis identified several key themes including symptoms of
502 depression and anxiety, as well as diagnosed conditions of eating disorders, bipolar
503 disorder, PTSD and psychotic disorders as demonstrated in **Table x**.

504

505 Despite being the most common reproductive endocrine disorder that spans through
506 the entire reproductive life of a woman, PCOS is often associated with a significant
507 negative patient experience, including delayed diagnosis, that could attribute to
508 exacerbation of symptoms.⁵⁶⁻⁵⁸ Due to the chronic nature of the disease, challenges
509 with persistent treatment adherence is a common issue, but lifestyle changes can be
510 useful to decrease the long-term consequences of the disease. However, once
511 diagnosed, only 19% of women report being aware of all conditions associated with
512 PCOS following discussions with their general practitioner (GP).⁵⁹ The typical
513 symptoms of PCOS such as disturbed menstrual cycles, hirsutism, male-pattern
514 baldness, acne, obesity, and infertility^{12,60-63} could have a further negative impact on
515 patient self-esteem leading to psychological burden. However, narrative accounts
516 point to considerable emphasis on a few symptoms such as infertility by the
517 clinicians, rather than taking a holistic view on all important features of the
518 condition,⁵⁹ such as the long term physical and mental health sequelae, and the
519 effect of diagnosis and treatments on quality of life of the woman. PCOS is also
520 associated with a higher rate of psychiatric disorders.⁵⁶ In keeping with this, our
521 meta-analysis reported 31% prevalence of common MH symptoms and diagnoses in
522 women with PCOS. Similarly, Hillman et al. found an overwhelming 74.9% of women
523 diagnosed with PCOS in their study, to have reported that the condition has
524 adversely affected their MH.⁵⁹ However, despite the considerable negative effect on

525 psychological wellbeing, as many as 34.9% of women in the study chose not to
526 discuss associated MH symptoms with their GP.⁵⁹ An important factor contributing to
527 this may be the ethnic background of the patient. Hillman et al. report that caucasian
528 women in UK diagnosed with PCOS were more likely to discuss their MH with their
529 GP when compared with asian women in UK with PCOS (odds ratio [OR] = 1.66;
530 95% confidence interval [CI] = 1.04 to 2.63).⁵⁹ Clinicians and healthcare providers
531 should better evaluate the needs of BAME communities. This would allow
532 personalised care to be delivered in a culturally sensitive way, which may improve
533 overall patient and clinical outcomes.

534 Around 1 in 6 adults in England meet the diagnostic criteria for common MH
535 disorders.⁶⁴ BAME ethnic groups are more likely to be detained under the Mental
536 Health Act compared to their White British counterparts, and this can be explained
537 by higher rates of mental illness observed and poorer levels of support.⁶⁵ Several
538 studies have explored beliefs about mental illness within BAME communities, and
539 the barriers faced when accessing care. Factors which account for poor presentation
540 rates with mental illness amongst the BAME community include associated stigma,
541 including those with PCOS, poor English language skills, previous negative
542 experiences with healthcare professionals, and being aware of available services.⁶⁶
543 The MH of patients with PCOS may be severely impacted by these issues and
544 reluctance to seek help may further exacerbate pre-existing psychiatric conditions, or
545 limit the recognition of new MH symptoms. Therefore, a thorough assessment of MH
546 illness risk is particularly important in BAME women with PCOS. In agreement, the
547 Royal College of Obstetricians and Gynaecologists (RCOG) recommends the routine
548 screening for psychological symptoms in all women with PCOS.⁶⁷ Yet, our meta-
549 analysis depicts that there is limited number of studies exploring psychological

550 comorbidities in PCOS patients, both in UK and worldwide. Additionally, our meta-
551 analysis was unable to meet most pre-planned outcomes, including the effects of
552 ethnicity and race on MH sequelae in PCOS women, due to the lack of data
553 identified within systematically pooled studies. This was largely due to the non-
554 reporting of patient race and ethnicity in PCOS studies examining patient MH.

555 The two most identified MH conditions amongst PCOS patients in our systematic
556 review were depression and anxiety. Indeed, several existing studies comment on
557 the high risk of both existing and new diagnoses of depression in women with
558 PCOS.^{68,69} Our meta-analysis confirmed these findings, as major depression
559 affected 17% of PCOS patients, and elevated existing depression affected 33%, with
560 a considerably high heterogeneity in both subthemes within and between regions.
561 Existing literature in the field measuring true prevalence of depression in BAME
562 patients with PCOS is contradictory. This meta-analysis could not pool race or
563 ethnicity with the data due to differences in research study designs and clinical
564 practices, as well as the lack of BAME patient representation within studies.
565 Therefore, the true prevalence of elevated existing depression and newly diagnosed
566 major depression amongst BAME PCOS women could not be estimated. However,
567 our narrative synthesis identified certain races/ethnicities to carry higher rates of
568 depression than Caucasian PCOS patients.

569

570 Anxiety disorders include generalised anxiety disorder, panic disorder, separation
571 anxiety disorder, social anxiety disorder and specific phobias⁷⁰ and may impair daily
572 functioning. Women are twice as likely to develop anxiety disorders than men,⁷⁰ with
573 women with PCOS have a significantly higher prevalence of generalised anxiety
574 symptoms than women without PCOS.⁷¹ This study revealed that there are a small

575 number of published studies commenting on anxiety prevalence in women with
576 PCOS. Of these, we identified 41% prevalence of generalised anxiety disorder
577 among women with PCOS, however, heterogeneity was high at 94.83%. This
578 heterogeneity extended to results from different regions suggests lack of difference
579 between geographical locations in prevalence of anxiety amongst women with
580 PCOS. Similar to our depression subtheme analysis, we were unable to establish the
581 prevalence of anxiety amongst different ethnicities and races in women with PCOS
582 due to lack of robust data.

583

584 Eating Disorders (EDs) have high prevalence particularly in young women
585 worldwide.⁷² Body image disturbances and self-esteem are central to the
586 development of common EDs and conditions that may affect body image has been
587 found to contribute to the development of EDs.⁷³ The body dissatisfaction associated
588 with features such as weight gain, hyperandrogenism, hirsutism, acne, and
589 androgenic alopecia often contribute to disturbed body image perception linked with
590 EDs. Existing literature, although informative on the relationship between PCOS and
591 EDs, struggles to report findings on ethnic differences in ED and PCOS. Only two
592 observational studies were identified addressing EDs in BAME PCOS patients,^{74,75}
593 and although they report an increased risk of disordered eating habits in PCOS
594 women compared with the control populations, in agreement, one study found Black,
595 Hispanic and Mixed race women with PCOS to have higher EDE-Q scores (a self-
596 rating questionnaire of the range and severity of ED features) compared with White
597 women⁷⁵ yet the other reported EDs to be similar in the BAME PCOS population.⁷⁵
598 However, discordant methodology and the use of external cohorts from a different
599 country, makes the available evidence to be substandard to draw firm conclusions

600 on the specific prevalence of EDs in BAME women with PCOS, indicating the need
601 for further research to understanding ethnic differences in PCOS and associated
602 EDs.

603

604 Psychotic disorders, such as schizophrenia have been reported to be significantly
605 more prevalent in patients with PCOS in a national study in Sweden.⁷⁶ However,
606 there is a dearth of studies investigating the associations between conditions.
607 Although people from BAME background had been reported to experience a higher
608 prevalence rate of psychosis⁷⁷ compared to the Caucasian population in UK, only
609 one cohort study explored the prevalence of psychotic disorders in Taiwanese PCOS
610 patients,⁷⁸ and reported no statistical difference in prevalence of schizophrenia
611 between the two populations.⁷⁸ This highlights the need for future high quality
612 studies to assess psychotic illnesses relevant to PCOS amongst different ethnicities.

613

614 Bipolar disorder (BD) has been reported to be more prevalent in women with
615 PCOS⁷⁹ compared to the general population and since it carries a 12-fold increased
616 risk of suicide,⁸⁰ it is especially important to examine any causative common
617 mechanistic relations between the two conditions. However, there is a caveat, in that
618 there is a reported high prevalence of menstrual disorders in women receiving
619 treatment for BD.⁸¹ Therefore, accounting for confounding variables such as
620 medication and pre-existing conditions is vital in studies that assess prevalence of
621 MH sequelae, such as BD, in BAME PCOS women. A study from Kashmir Valley⁸²
622 reported BD rates of 2.72% compared to 0.00% in control participants while a
623 nationwide cohort study from Taiwan⁷⁸ found no significant alteration in prevalence
624 of BD in PCOS women compared to a control population. Further research is thus

625 required in order to develop understanding of the prevalence in different populations,
626 as associations cannot be drawn with the limited data available.

627

628 This systematic review had further revealed the heterogeneity of diagnosing
629 psychiatric disorders. Clinicians have adopted 8 different self-report questionnaires
630 in their methodologies highlighted by this review. This limits our study's
631 generalisability as well as any estimate of prevalence of a given psychiatric disorder.

632

633 Overall, although most studies used Rotterdam Criteria in the diagnosis of PCOS,⁵ 4
634 studies adopted the National Institutes of Health Criteria, 1990 to diagnose PCOS,
635 which will bring obvious diagnostic bias.⁸³⁻⁸⁶ Future studies should strive to adapt
636 internationally accepted, standardised criteria for the diagnosis of both PCOS and
637 MH disorder to avoid sampling bias.

638

639 Medical practitioners may not be aware of the impact different cultures may have on
640 patient's reporting of both physical and psychiatric symptoms. In general, members
641 of BAME communities are less likely to engage with MH services or seek help before
642 symptoms severely impact their function.^{87,88} Simkhada et al. found that members of
643 Nepali and Iranian communities report improved MH care and support by healthcare
644 professionals who were trained on different cultural practices.⁸⁹ Furthermore,
645 clinicians in the study stated that a better understanding of different cultures to be
646 beneficial for providing a culturally sensitive service. Therefore, training healthcare
647 professionals in cultural norms within BAME communities is vital to better
648 understand their knowledge and beliefs of MH symptoms, thereby allowing clinicians
649 to provide a holistic, effective treatment approach when working with diverse

650 populations. Cultural competency training may also increase patient trust in clinicians
651 and lead to early discussions of how PCOS may be affecting patients psychosocially
652 within distinct BAME communities. This will therefore aid in early detection and
653 effective and lasting treatment of MH sequelae of PCOS and personalise patient
654 clinical care.

655

656 **Limitations**

657 Several limitations affected our systematic review and meta-analysis findings. Whilst
658 studies listed often identified severe emotional distress amongst PCOS women,
659 some of this was self-reported and therefore subjective, without the presence of a
660 clinical diagnosis. This may mask the true prevalence of common MH conditions,
661 such as depression and anxiety, amongst women with PCOS. A further limitation
662 includes the high heterogeneity observed across all subtheme meta-analyses.
663 Several sources of heterogeneity were behind the variations across estimates.
664 These include the range of scales used, the choice of threshold, although many are
665 equivalent but nonetheless, some disagreement remains and contributes to
666 variations. Other factors such as differences in age range, body mass index (BMI),
667 region, study design, sample size and methodology, population ethnicity and other
668 characteristics, and the established unobserved heterogeneity, all tapping into the
669 differences observed across studies.

670 The cultural differences in reporting MH symptoms across different regions,
671 potentially further impacted by complex interaction with stigma and accepted norms
672 within BAME communities may have specific effects on different populations.
673 Moreover, the difference in reporting MH symptoms and diagnoses is a further
674 limitation of all studies included in this review. Several diverse assessment tools

675 were used in the assessment of risk of key psychiatric disorders, including self-
676 reported symptoms, self-reported use of psychiatric medication and clinical
677 diagnosis, thereby introducing heterogeneity in studies included in this review. This
678 may limit the generalisability of the data obtained, may mask the true prevalence of a
679 given psychiatric disorder due to questionnaires' tendency to screen rather than
680 diagnose.

681

682

683 **Conclusion**

684

685 This study demonstrates the lack of ethnic minority representation in research
686 studies conducted among PCOS patients exploring a possible MH sequelae. To
687 determine if there is a bi-directional relationship between PCOS and MH conditions
688 among ethnic minorities, comprehensive research studies should be designed and
689 conducted as part of a global initiative. A key attribute to the changing needs within
690 women's physical and MH is the migratory patterns that changes the regional and
691 global population. The associated nuances influence both clinical practice and the
692 access to the health-care system, and therefore, regular, and careful scrutiny of
693 contemporary evidence is essential to optimise the overall clinical care offered to
694 these patients. As a result, cultural appropriation based training should be made
695 available and accessible to healthcare professionals within primary and secondary
696 care settings.

697

698

699

700 **Data sharing statement**

701 All data used within this study has been publicly available. The authors will consider
702 the sharing the dataset gathered upon request.

703

704 **Contributors**

705 GD and DKH developed the systematic review protocol and embedded this within
706 the ELEMI project's evidence synthesis phase. GD, VB, DKH, SR, + SA wrote the
707 first draft of the manuscript. This was furthered by PP, AS, WG, NT, YZ, JS and SR.
708 KM, GD, YZ, VB and JS shared database searches, study selection and extraction
709 for analysis. SA and GD conducted the analysis including the design of the statistical
710 analysis plan. GD, YZ, DKH, PP, KE, WG, NT, YZ, JS, KM, VR, AS, PB, HM, AM,
711 WG and KM critically appraised and finalised the manuscript. All authors approved
712 the final version of the manuscript.

713

714

715

716 **Acknowledgements**

717 The authors acknowledge support from Southern Health NHS Foundation Trust, and
718 Liverpool Women's hospital. We would like to acknowledge Mrs Nyla Haque who
719 inspired the discussion of BAME groups within the context of this study.

720

721 This paper is part of the multifaceted ELEMI project that is sponsored by Southern
722 Health NHS Foundation Trust and in collaboration with the University of Liverpool,
723 University College London, University College London NHS Foundation Trust,
724 Liverpool Women's Hospital, Robinson Research Institute (University of Adelaide),

725 Ramaiah Memorial Hospital (India), University of Geneva and Manchester University

726 NHS Foundation Trust.

727

728 **Supplementary Materials**

729 All supplementary materials associated with this article can be found in the attached

730 Appendices.

731

References

732

733

734 Abu Hashim H. Twenty years of ovulation induction with metformin for PCOS; what
735 is the best available evidence?. *Reprod Biomed Online*. 2016;32(1):44-53.
736 doi:10.1016/j.rbmo.2015.09.015

737

738 Bjornes AC, Saxena R, Welt CK. Relationship between polycystic ovary syndrome
739 and ancestry in European Americans. *Fertil Steril*. 2016;106(7):1772-1777.
740 doi:10.1016/j.fertnstert.2016.08.033

741

742 Ding T, Hardiman PJ, Petersen I, Wang FF, Qu F, Baio G. The prevalence of
743 polycystic ovary syndrome in reproductive-aged women of different ethnicity: a
744 systematic review and meta-analysis. *Oncotarget*. 2017;8(56):96351-96358.
745 doi:10.18632/oncotarget.19180

746

747 Gibson-Helm M, Teede H, Dunaif A, Dokras A. Delayed Diagnosis and a Lack of
748 Information Associated With Dissatisfaction in Women With Polycystic Ovary
749 Syndrome. *J Clin Endocrinol Metab*. 2017;102(2):604-612. doi:10.1210/jc.2016-2963

750

751 Greenhill C. Mechanism underlying beneficial effects of exercise in PCOS identified.
752 *Nat Rev Endocrinol*. 2018;14(8):441. doi:10.1038/s41574-018-0041-1

753

754 Koch L. Androgens inversely related to depression in PCOS. *Nat Rev Endocrinol*.
755 2011;7:438. doi:10.1038/nrendo.2011.97

756

757 Tzalazidis R, Oinonen KA. Continuum of Symptoms in Polycystic Ovary Syndrome
758 (PCOS): Links with Sexual Behavior and Unrestricted Sociosexuality. *J Sex Res.*
759 2020;1-13.

760

761 Yildizhan R, Gokce AI, Yildizhan B, Cim N. Comparison of the effects of
762 chlormadinone acetate versus drospirenone containing oral contraceptives on
763 metabolic and hormonal parameters in women with PCOS for a period of two-year
764 follow-up. *Gynecol Endocrinol.* 2015;31(5):396-400.
765 doi:10.3109/09513590.2015.1006187

766

767 [The Lancet Diabetes Endocrinology. Empowering women with PCOS. *Lancet*
768 *Diabetes Endocrinol.* 2019;7\(10\):737. doi:10.1016/S2213-8587\(19\)30289-X](#)

769

770

771

772

773

774

775

776

777

778

779

780

781

782

References

783

- 784 1. Azziz R, Carmina E, Dewailly D, Diamanti-Kandarakis E, Escobar-Morreale HF,
785 Futterweit W. Position statement: criteria for defining polycystic ovary
786 syndrome as a predominantly hyperandrogenic syndrome: an Androgen
787 Excess Society guideline. *J Clin Endocrinol Metab.* 2006;91(11):4237-4245.
788 doi:10.1210/jc.2006-0178
- 789 2. Diamanti-Kandarakis E, Kandarakis H, Legro RS. The role of genes and
790 environment in the etiology of PCOS. *Endocrine.* 2006;30(1):19-26.
791 doi:10.1385/ENDO:30:1:19
- 792 3. March WA, Moore VM, Willson KJ, Phillips DI, Norman RJ, Davies MJ. The
793 prevalence of polycystic ovary syndrome in a community sample assessed
794 under contrasting diagnostic criteria. *Hum Reprod.* 2010;25(2):544-551.
795 doi:10.1093/humrep/dep399
- 796 4. Bozdag G, Mumusoglu S, Zengin D, Karabulut E, Yildiz BO. The prevalence and
797 phenotypic features of polycystic ovary syndrome: a systematic review and
798 meta-analysis. *Human Reprod.* 2016;31(12):2841-2855.
799 doi:10.1093/humrep/dew218
- 800 5. Teede H, Misso M, Costello M, et al. International evidence-based guideline for
801 the assessment and management of polycystic ovary syndrome (PCOS).
802 European Society of Human Reproduction and Embryology. 2018.
803 [https://www.eshre.eu/Guidelines-and-Legal/Guidelines/Polycystic-Ovary-](https://www.eshre.eu/Guidelines-and-Legal/Guidelines/Polycystic-Ovary-Syndrome)
804 [Syndrome](https://www.eshre.eu/Guidelines-and-Legal/Guidelines/Polycystic-Ovary-Syndrome)

-
- 805 6. Wolf WM, Wattick RA, Kinkade ON, Olfert MD. Geographical Prevalence of
806 Polycystic Ovary Syndrome as Determined by Region and Race/Ethnicity. *Int*
807 *J Environ Res Public Health*. 2018;15(11):2589. doi:10.3390/ijerph15112589
- 808 7. The Rotterdam ESHRE/ASRM-Sponsored PCOS Consensus Workshop Group.
809 Revised 2003 consensus on diagnostic criteria and long-term health risks
810 related to polycystic ovary syndrome. *Fertil Steril*. 2004;81(1):19-25.
811 doi:10.1016/j.fertnstert.2003.10.004
- 812 8. Sendur SN, Yildiz BO. Influence of ethnicity on different aspects of polycystic
813 ovary syndrome: a systematic review. *Reprod BioMed Online*.
814 2021;42(4):799-818. doi: 10.1016/j.rbmo.2020.12.006
- 815 9. Engmann L, Jin S, Sun F, et al. Racial and ethnic differences in the polycystic
816 ovary syndrome metabolic phenotype. *Am J Obstet Gynecol*.
817 2017;216(5):493.e1-493.e13. doi:10.1016/j.ajog.2017.01.003
- 818 10. Escobar-Morreale HF. Polycystic ovary syndrome: definition, aetiology, diagnosis
819 and treatment. *Nat Rev Endocrinol*. 2018;14(5):270-284.
820 doi:10.1038/nrendo.2018.24
- 821 11. Amato P, Simpson JL. The genetics of polycystic ovary syndrome. *Best Pract*
822 *Res Clin Obstet Gynaecol*. 2004;18(5):707-718.
823 doi:10.1016/j.bpobgyn.2004.05.002
- 824 12. Azziz R, Carmina E, Chen Z, et al. Polycystic ovary syndrome. *Nat Rev Dis*
825 *Primers*. 2016;2:16057. doi:10.1038/nrdp.2016.57
- 826 13. Apridonidze T, Essah PA, Luorno MJ, Nestler JE. Prevalence and characteristics
827 of the metabolic syndrome in women with polycystic ovary syndrome. *J Clin*
828 *Endocrinol Metab*. 2005;90(4):1929-1935. doi:10.1210/jc.2004-1045

-
- 829 14. Legro RS, Kunselman AR, Dodson WC, Dunaif A. Prevalence and predictors of
830 risk for type 2 diabetes mellitus and impaired glucose tolerance in polycystic
831 ovary syndrome: a prospective, controlled study in 254 affected women. *J Clin*
832 *Endocrinol Metab.* 1999;84(1):165-169. doi:10.1210/jcem.84.1.5393
- 833 15. Teede H, Deeks A, Moran L. Polycystic ovary syndrome: a complex condition
834 with psychological, reproductive and metabolic manifestations that impacts on
835 health across the lifespan. *BMC Medicine.* 2010;8(41):1-10.
836 doi:10.1186/1741-7015-8-41
- 837 16. Moran L, Gibson-Helm M, Teede H, Deeks A. Polycystic ovary syndrome: a
838 biopsychosocial understanding in young women to improve knowledge and
839 treatment options. *J Psychosom Obstet Gynecol.* 2010;31(1):24-31.
840 doi:10.3109/01674820903477593
- 841 17. Hillman SC, Bryce C, Caleyachetty R, Dale J. Women's experiences of diagnosis
842 and management of polycystic ovary syndrome: a mixed-methods study in
843 general practice. *Br J Gen Pract.* 2020;70(694):e322-e329.
844 doi:10.3399/bjgp20X708881
- 845 18. Dokras A, Stener-Victorin E, Yildiz BO, et al. Androgen excess — Polycystic
846 Ovary Syndrome Society: position statement on depression, anxiety, quality of
847 life, and eating disorders in polycystic ovary syndrome. *Fertil Steril.*
848 2018;109(5):888-899. doi:10.1016/j.fertnstert.2018.01.038
- 849 19. Balen A. Polycystic ovary syndrome. *InnovAiT.* 2016;9(3):144-150.
- 850 20. Kumarendran B, Sumilo D, O'Reilly MW, et al. Increased risk of obstructive sleep
851 apnoea in women with polycystic ovary syndrome: a population-based cohort
852 study. *Eur J Endocrinol.* 2019;180(4):265-272. doi:10.1530/EJE-18-0693

-
- 853 21. Dokras A. Mood and anxiety disorders in women with PCOS. *Steroids*.
854 2012;77(4):338-341. doi:10.1016/j.steroids.2011.12.008
- 855 22. Davari-Tanha F, Hosseini Rashidi B, Ghajarzadeh M, Noorbala AA. Bipolar
856 disorder in women with polycystic ovarian syndrome (PCO). *Acta Med Iran*.
857 2014;52(1):46-48.
- 858 23. Kerchner A, Lester W, Stuart SP, Dokras A. Risk of depression and other mental
859 health disorders in women with polycystic ovary syndrome: a longitudinal
860 study. *Fertil Steril*. 2009;91(1):207-212. doi:10.1016/j.fertnstert.2007.11.022
- 861 24. Farrell K, Antoni MH. Insulin resistance, obesity, inflammation, and depression in
862 polycystic ovary syndrome: biobehavioral mechanisms and interventions.
863 *Fertil Steril*. 2010;94(5):1565-1574. doi:10.1016/j.fertnstert.2010.03.081
- 864 25. Hollinrake E, Abreu A, Maifeld M, Van Voorhis BJ, Dokras A. Increased risk of
865 depressive disorders in women with polycystic ovary syndrome. *Fertil Steril*.
866 2007;87(6):1369-1376. doi:10.1016/j.fertnstert.2006.11.039
- 867 26. Yin X, Ji Y, Chan CLW, Chan CHY. The mental health of women with polycystic
868 ovary syndrome: a systematic review and meta-analysis. *Arch Womens Ment*
869 *Health*. 2021;24(1):11-27. doi:10.1007/s00737-020-01043-x
- 870 27. Prince M, Patel V, Saxena S, et al. No health without mental health. *Lancet*.
871 2007;370(9590):859-877. doi:10.1016/S0140-6736(07)61238-0
- 872 28. Memon A, Taylor K, Mohebati LM, et al. Perceived barriers to accessing mental
873 health services among black and minority ethnic (BME) communities: a
874 qualitative study in Southeast England. *BMJ Open*. 2016;6:e012337.
875 doi:10.1136/bmjopen-2016-012337
- 876 29. American Psychiatric Association. *Diagnostic and statistical manual of mental*
877 *disorders*. 5th ed. 2013:21.

-
- 878 30. Spitzer RL, Kroenke K, Williams JB. Validation and utility of a self-report version
879 of PRIME-MD: the PHQ primary care study. Primary Care Evaluation of
880 Mental Disorders. Patient Health Questionnaire. *JAMA*. 1999;282(18):1737-
881 1744. doi:10.1001/jama.282.18.1737
- 882 31. Snaith RP, Zigmond AS. The hospital anxiety and depression scale. *Br Med J*
883 (*Clin Res Ed*). 1986;292(6516):344. doi:10.1136/bmj.292.6516.344
- 884 32. Beck AT, Steer RA, Brown GK. *Beck depression inventory (BDI-II)*. Pearson;
885 1996.
- 886 33. Davidson J, Turnbull CD, Strickland R, et al. The Montgomery - Åsberg
887 Depression Scale: reliability and validity. *Acta Psychiatr Scand*.
888 1986;73(5):544-548. doi:10.1111/j.1600-0447.1986.tb02723.x
- 889 34. Devins GM, Orme CM, Costello CG, et al. Measuring depressive symptoms in
890 illness populations: Psychometric properties of the Center for Epidemiologic
891 Studies Depression (CES-D) scale. *Psychology and Health*. 1988;2(2):139-
892 156. doi:10.1080/08870448808400349
- 893 35. Score IRC. The Reynolds Adolescent Depression Scale-(RADS-2).
894 *Comprehensive Handbook of Psychological Assessment, Volume 2:*
895 *Personality Assessment*. 2003;2:224.
- 896 **36. REFERENCE MISSING**
- 897 **37. REFERENCE MISSING**
- 898 38. Spitzer RL, Kroenke K, Williams JB, et al. A brief measure for assessing
899 generalized anxiety disorder: the GAD-7. *Arch Intern Med*. 2006;166(10):1092-
900 1097. doi:10.1001/archinte.166.10.1092
- 901 **39. REFERENCE MISSING**

-
- 902 40. Cinar N, Harmanci A, Demir B, et al. Effect of an oral contraceptive on emotional
903 distress, anxiety and depression of women with polycystic ovary syndrome: a
904 prospective study. *Hum Reprod.* 2012;27(6):1840-1845.
905 doi:10.1093/humrep/des113
- 906 41. Benson J, Severn C, Hudnut-Beumler J, et al. Depression in Girls With Obesity
907 and Polycystic Ovary Syndrome and/or Type 2 Diabetes. *Can J Diabetes.*
908 2020;44(6):507-513. doi:10.1016/j.jcjd.2020.05.015
- 909 42. Pastore LM, Patrie JT, Morris WL, et al. Depression symptoms and body
910 dissatisfaction association among polycystic ovary syndrome women. *J*
911 *Psychosom Res.* 2011;71(4):270-276. doi:10.1016/j.jpsychores.2011.02.005
- 912 43. Maya J, Siegel J, Cheng TQ, et al. Prevalence and risk factors of polycystic
913 ovarian syndrome among an ethnically diverse overweight/obese adolescent
914 population. *Int J Adolesc Med Health.* 2020. doi:10.1515/ijamh-2019-0109
- 915 44. Rodrigues CE, Ferreira Lde L, Jansen K, et al. Evaluation of common mental
916 disorders in women with polycystic ovary syndrome and its relationship with
917 body mass index. *Rev Bras Ginecol Obstet.* 2012;34(10):442-446.
918 doi:10.1590/s0100-72032012001000002
- 919 45. DerSimonian R, Laird N. Meta-analysis in clinical trials. *Controlled clinical trials.*
920 1986;7(3):177-188. doi:10.1016/0197-2456(86)90046-2
- 921 46. Newcombe RG. Interval estimation for the difference between independent
922 proportions: comparison of eleven methods. *Statistics in medicine.*
923 1998;17(8):873-890. doi:10.1002/(sici)1097-0258(19980430)17:8<873::aid-
924 sim779>3.0.co;2-i

-
- 925 47. Newcombe RG. Two - sided confidence intervals for the single proportion:
926 comparison of seven methods. *Statistics in medicine*. 1998;17(8):857-872.
927 doi:10.1002/(sici)1097-0258(19980430)17:8<857::aid-sim777>3.0.co;2-e
- 928 48. Higgins JP, Thompson SG, Deeks JJ, et al. Measuring inconsistency in meta-
929 analyses. *Bmj* 2003;327(7414):557-560. doi:10.1136/bmj.327.7414.557
- 930 **49. REFERENCE MISSING**
- 931 **50. REFERENCE MISSING**
- 932 **51. REFERENCE MISSING**
- 933 **52. REFERENCE MISSING**
- 934 **53. REFERENCE MISISNG**
- 935 **54. REFERENCE MISSING**
- 936 **55. REFERENCE MISSING**
- 937 56. Hoeger KM, Dokras A, Piltonen T. Update on PCOS: Consequences,
938 Challenges, and Guiding Treatment. *J Clin Endocrinol Metab*.
939 2021;106(3):e1071-e1083. doi:10.1210/clinem/dgaa839
- 940 57. Witchel SF, Teede HJ, Peña AS. Curtailing PCOS. *Pediatr Res*. 2020;87(2):353-
941 361. doi:10.1038/s41390-019-0615-1
- 942 58. Lin AW, Bergomi EJ, Dollahite JS, Sobal J, Hoeger KM, Lujan ME. Trust in
943 Physicians and Medical Experience Beliefs Differ Between Women With and
944 Without Polycystic Ovary Syndrome. *J Endocr Soc*. 2018;2(9):1001-1009.
945 doi:10.1210/js.2018-00181
- 946 59. Hillman SC, Bryce C, Caleyachetty R, Dale J. Women's experiences of
947 diagnosis and management of polycystic ovary syndrome: a mixed-methods
948 study in general practice. *Br J Gen Pract*. 2020;70(694):e322-e329.
949 doi:10.3399/bjgp20X708881

-
- 950 60. Saidunnisa BG, Shariff A, Ayman G, Mohammad B, Housam R, Khaled N.
951 Assessment of Risk Factors for development of Polycystic Ovarian Syndrome.
952 *Int J Contemp Med Research*. 2017;4(1):164-167.
- 953 61. Lo JC, Feigenbaum SL, Yang J, Pressman AR, Selby JV, Go AS. Epidemiology
954 and Adverse Cardiovascular Risk Profile of Diagnosed Polycystic Ovary
955 Syndrome. *J Clin Endocrinol Metab*. 2006;91(4):1357-1363.
956 doi:10.1210/jc.2005-2430
- 957 62. Cooney LG, Dokras A. (2018) Beyond fertility: polycystic ovary syndrome and
958 long-term health. *Fertil Steril*. 2018;110(5):794-809.
959 doi:10.1016/j.fertnstert.2018.08.021
- 960 63. Azziz R, Woods KS, Reyna R, Key TJ, Knochenhauer ES, Yildiz BO. The
961 prevalence and features of the polycystic ovary syndrome in an unselected
962 population. *J Clin Endocrinol Metab*. 2004;89(6):2745-2749.
963 doi:10.1210/jc.2003-032046
- 964 64. McManus S, Bebbington P, Jenkins R, Brugha T, eds. *Mental health and*
965 *wellbeing in England: Adult Psychiatric Morbidity Survey 2014*. NHS Digital;
966 2016.
- 967 65. Gajwani R, Parsons H, Birchwood M, Singh SP. Ethnicity and detention: are
968 Black and minority ethnic (BME) groups disproportionately detained under the
969 Mental Health Act 2007?. *Soc Psychiatry Psychiatr Epidemiol*.
970 2016;51(5):703-711. doi:10.1007/s00127-016-1181-z
- 971 66. Linney C, Ye S, Redwood S, et al. "Crazy person is crazy person. It doesn't
972 differentiate": an exploration into Somali views of mental health and access to

-
- 973 healthcare in an established UK Somali community. *Int J Equity Health*.
974 2020;19(1):190. doi:10.1186/s12939-020-01295-0
- 975 67. Ledger WL, Atkin SL, Sathyapalan T. *Long-term Consequences of Polycystic*
976 *Ovary Syndrome: Green-top Guideline No. 33*. 3rd ed. Royal College of
977 Obstetricians and Gynaecologists; 2014.
978 https://www.rcog.org.uk/globalassets/documents/guidelines/gtg_33.pdf
- 979 68. Greenwood EA, Yaffe K, Wellons MF, Cedars MI, Huddleston HG. Depression
980 over the lifespan in a population-based cohort of women with polycystic ovary
981 syndrome: longitudinal analysis. *J Clin Endocrinol Metab*. 2019;104(7):2809-
982 2819. doi:10.1210/jc.2019-00234
- 983 69. Cooney LG, Dokras A. Depression and Anxiety in Polycystic Ovary Syndrome:
984 Etiology and Treatment. *Curr Psychiatry Rep*. 2017;19(11):83.
985 doi:10.1007/s11920-017-0834-2
- 986 70. Craske MG, Stein MB. Anxiety. *Lancet*. 2016;388(10063):3048-3059.
987 doi:10.1016/S0140-6736(16)30381-6
- 988 **71. REFERENCE MISSING**
- 989 72. Galmiche M, Déchelotte P, Lambert G, Tavolacci MP. Prevalence of eating
990 disorders over the 2000-2018 period: a systematic literature review. *Am J Clin*
991 *Nutr*. 2019;109(5):1402-1413. doi:10.1093/ajcn/nqy342
- 992 73. Tay CT, Teede HJ, Hill B, Loxton D, Joham AE. Increased prevalence of eating
993 disorders, low self-esteem, and psychological distress in women with
994 polycystic ovary syndrome: a community-based cohort study. *Fertil Steril*.
995 2019;112(2):353-361. doi:10.1016/j.fertnstert.2019.03.027

-
- 996 74. Greenwood EA, Pasch LA, Cedars MI, Huddleston HG. Obesity and depression
997 are risk factors for future eating disorder-related attitudes and behaviors in
998 women with polycystic ovary syndrome. *Fertil Steril*. 2020;113(5):1039-1049.
999 doi:10.1016/j.fertnstert.2020.01.016
- 1000 75. Lee I, Cooney LG, Saini S, et al. Increased risk of disordered eating in polycystic
1001 ovary syndrome. *Fertil Steril*. 2017;107(3):796-802.
1002 doi:10.1016/j.fertnstert.2016.12.014
- 1003 76. Cesta CE, Månsson M, Palm C, Lichtenstein P, Iliadou AN, Landén M. Polycystic
1004 ovary syndrome and psychiatric disorders: Co-morbidity and heritability in a
1005 nationwide Swedish cohort. *Psychoneuroendocrinology*. 2016;73:196-203.
1006 doi:10.1016/j.psyneuen.2016.08.005
- 1007 77. Qassem T, Bebbington P, Spiers N, McManus S, Jenkins R, Dein S. Prevalence
1008 of psychosis in black ethnic minorities in Britain: analysis based on three
1009 national surveys. *Soc Psychiatry Psychiatr Epidemiol*. 2015;50(7):1057-1064.
1010 doi:10.1007/s00127-014-0960-7
- 1011 78. Hung JH, Hu LY, Tsai SJ, et al. Risk of psychiatric disorders following polycystic
1012 ovary syndrome: a nationwide population-based cohort study. *PLoS One*.
1013 2014;9(5):e97041. doi:10.1371/journal.pone.0097041
- 1014 79. Brutocao C, Zaiem F, Alsawas M, Morrow AS, Murad MH, Javed A. Psychiatric
1015 disorders in women with polycystic ovary syndrome: a systematic review and
1016 meta-analysis. *Endocrine*. 2018;62(2):318-325. doi:10.1007/s12020-018-
1017 1692-3

-
- 1018 80. Grunze H. Chapter 40 - Bipolar Disorder. In: Zigmond MJ, Rowland LP, Coyle
1019 JT, eds. *Neurobiology of Brain Disorders*. Academic Press, San Diego;
1020 2015:655-673.
- 1021 81. Rasgon NL, Altshuler LL, Fairbanks L, et al. Reproductive function and risk for
1022 PCOS in women treated for bipolar disorder. *Bipolar Disord*. 2005;7(3):246-
1023 259. doi:10.1111/j.1399-5618.2005.00201.x
- 1024 82. Hussain A, Chandel RK, Ganie MA, et al. Prevalence of psychiatric disorders in
1025 patients with a diagnosis of polycystic ovary syndrome in kashmir. *Indian J*
1026 *Psychol Med*. 2015;37(1):66-70. doi:10.4103/0253-7176.150822
- 1027 **83. REFERENCE MISSING**
- 1028 **84. REFERENCE MISSING**
- 1029 **85. REFERENCE MISSING**
- 1030 **86. REFERENCE MISSING**
- 1031 87. Casey, M. Health Needs Assessment of the Nepali Community in Rushmoor.
1032 Hampshire County Council. Updated October, 2010.
1033 <https://documents.hants.gov.uk/public-health/NepaliHealthNeedsAssessment2010.pdf>
- 1034 88. Cooper C, Spiers N, Livingston G, et al. Ethnic inequalities in the use of health
1035 services for common mental disorders in England. *Soc Psychiatry Psychiatr*
1036 *Epidemiol*. 2013;48(5):685-692. doi:10.1007/s00127-012-0565-y
- 1037 89. Simkhada B, Vahdaninia M, van Teijlingen E, Blunt H. Cultural issues on
1038 accessing mental health services in Nepali and Iranian migrants communities in the
1039 UK. *Int J Ment Health Nurs*. 2021. doi:10.1111/inm.12913

1040
1041
1042
1043
1044
1045