

1 **Sero-surveillance for IgG to SARS-CoV-2 at antenatal care clinics**
2 **in three Kenyan referral hospitals: repeated cross-sectional**
3 **surveys 2020-21**

4 R. Lucinde^{1,*}, D. Mugo¹, C. Bottomley², A. Karani¹, E. Gardiner¹, R Aziza³, J. Gitonga¹, H. Karanja¹,
5 J. Nyagwange¹, J. Tuju¹, P. Wanjiku¹, E. Nzomo⁴, E. Kamuri⁵, K. Thurania⁵, S. Agunda⁵, G. Nyutu¹,
6 A. Etyang¹, I. M. O. Adetifa^{1,2}, E. Kagucia¹, S. Uyoga¹, M. Otiende¹, E. Otieno¹, L. Ndwiga¹, C. N.
7 Agoti¹, R. A. Aman⁶, M. Mwangangi⁶, P. Amoth⁶, K. Kasera⁶, A. Nyaguara¹, W. Ng'ang'a⁷, L. B.
8 Ochola⁹, E. Namdala¹⁰, O Gaunya¹⁰, R Okuku¹⁰, E. Barasa^{1,8}, P. Bejon^{1,8}, B. Tsofa¹, L. I. Ochola-
9 Oyier¹, G. M. Warimwe^{1,8+}, A. Agweyu¹⁺, J. A. G. Scott^{1,2,8+}, K. E. Gallagher^{1,2+}.

10 * Corresponding author: Ruth Lucinde, Epidemiology & Demography Department, KEMRI-
11 Wellcome Trust Research Programme CGMR-C, PO Box 230-80108, Kilifi, Kenya. Email:
12 RLucinde@kemri-wellcome.org

13 Alternate corresponding author: Katherine Gallagher, Department of Infectious Disease
14 Epidemiology, Faculty of Epidemiology and Population Health, London School of Hygiene and
15 Tropical Medicine, Keppel Street, London, WC1E 7HT, United Kingdom. Email:
16 Katherine.gallagher@lshtm.ac.uk

17 ⁺Contributed equally

18 ¹ KEMRI-Wellcome Trust Research Programme, Kilifi, Kenya.

19 ² Department of Infectious Diseases Epidemiology, London School of Hygiene and Tropical
20 Medicine, Keppel Street, London, UK.

21 ³ School of Life Sciences and the Zeeman Institute for Systems Biology & Infectious Disease
22 Epidemiology Research (SBIDER), University of Warwick, Coventry, United Kingdom

NOTE: This preprint reports new research that has not been certified by peer review and should not be used to guide clinical practice.

23 ⁴ Kilifi County Hospital, Ministry of Health, Government of Kenya

24 ⁵ Kenyatta National Hospital, Ministry of Health, Government of Kenya

25 ⁶ Ministry of Health, Government of Kenya, Nairobi, Kenya.

26 ⁷ Presidential Policy and Strategy Unit, The Presidency, Government of Kenya, Nairobi, Kenya

27 ⁸ Nuffield Department of Medicine, Oxford University, Oxford, UK

28 ⁹ Institute of Primate Research, Nairobi, Kenya

29 ¹⁰ Busia Country Teaching & Referral Hospital, Busia, Kenya

30

31 **Short title: SARS-CoV-2 seroprevalence at antenatal care clinics in three Kenyan referral**

32 **hospitals**

33 Abstract word count: 250/300

34 Article: 2997/5000

35 **Keywords: SARS-CoV-2, serology, sero-surveillance, ante-natal care**

36 **Abstract**

37 **Introduction**

38 The high proportion of SARS-CoV-2 infections that have remained undetected presents a challenge to
39 tracking the progress of the pandemic and estimating the extent of population immunity.

40 **Methods**

41 We used residual blood samples from women attending antenatal care services at three hospitals in
42 Kenya between August 2020 and October 2021 and a validated IgG ELISA for SARS-Cov-2 spike
43 protein and adjusted the results for assay sensitivity and specificity. We fitted a two-component
44 mixture model as an alternative to the threshold analysis to estimate of the proportion of individuals
45 with past SARS-CoV-2 infection.

46 **Results**

47 We estimated seroprevalence in 2,981 women; 706 in Nairobi, 567 in Busia and 1,708 in Kilifi. By
48 October 2021, 13% of participants were vaccinated (at least one dose) in Nairobi, 2% in Busia.
49 Adjusted seroprevalence rose in all sites; from 50% (95%CI 42-58) in August 2020, to 85% (95%CI
50 78-92) in October 2021 in Nairobi; from 31% (95%CI 25-37) in May 2021 to 71% (95%CI 64-77) in
51 October 2021 in Busia; and from 1% (95% CI 0-3) in September 2020 to 63% (95% CI 56-69) in
52 October 2021 in Kilifi. Mixture modelling, suggests adjusted cross-sectional prevalence estimates are
53 underestimates; seroprevalence in October 2021 could be 74% in Busia and 72% in Kilifi.

54 **Conclusions**

55 There has been substantial, unobserved transmission of SARS-CoV-2 in Nairobi, Busia and Kilifi
56 Counties. Due to the length of time since the beginning of the pandemic, repeated cross-sectional
57 surveys are now difficult to interpret without the use of models to account for antibody waning.

58

59

60

61

62

63 **Introduction**

64 Globally, as countries are confronted with new waves of SARS-CoV-2 infections and new variants,
65 WHO recommendations have focused on enhancing population immunity with the available COVID-
66 19 vaccines(1). In Kenya, as with many lower-middle income countries, COVID-19 vaccine supplies
67 have been limited(2). Vaccination started in March 2021 and by 31st October 2021, 3.7 million people
68 had received their first dose (13.5% of the adult population), 1.6 million had received their second
69 dose (6% of the adult population), with some geographic heterogeneity. In Nairobi 34% were partially
70 vaccinated, 18% were fully vaccinated, compared to Busia where 8% were partially vaccinated, 3%
71 fully vaccinated, and Kilifi where 5% were partially vaccinated, 2% fully vaccinated(3).

72 As vaccine coverage and vaccine-induced immunity is still considered to be low in Kenya, it remains
73 important to track the potential protection conferred by natural infection. By the 31st October 2021,
74 Kenya had experienced four waves of infections, and reported a total of 253,310 confirmed cases and
75 5281 deaths. However, with just 3.9% of the population over 65 years of age(4), the proportion of
76 infections that have been asymptomatic is likely to be very high(5). Additionally, limited access to
77 tests and low uptake of testing makes it likely that a substantial proportion of cases have remained
78 undetected. Measuring the prevalence of antibodies to SARS-CoV-2 is an alternative way to estimate
79 the cumulative incidence of infection. A number of serological assays have been developed and
80 perform well with high sensitivity and specificity(6-9). We have shown that 5.2% of blood donors in
81 Kenya had SARS-CoV-2 antibodies in June 2020 and this had risen to 9.1% in September 2020 and
82 48.5% by March 2021(10-12). However, it is unclear whether blood donors are representative of the
83 population.

84 In the context of a pandemic, sentinel public health surveillance using residual aliquots of routinely
85 collected blood samples has the potential to overcome participation bias. For example, sero-
86 surveillance for HIV among women attending antenatal care was used to track the progress of the
87 HIV pandemic and showed prevalence estimates that were similar to population samples from the

88 same areas(13, 14). It remains unclear whether pregnancy alters susceptibility to SARS-CoV-2
89 infection(15); however, a large systematic review has found no difference in risk of becoming
90 symptomatic when comparing pregnant women with confirmed SARS-CoV-2 infection in women of
91 the same age(16, 17).

92 In Kenya, in 2014, 50% of women had had at least one pregnancy or were pregnant by 20 years of age
93 and the coverage of at least one antenatal care visit was 96%(18). Residual blood samples from
94 mothers visiting antenatal care for the first time may therefore represent a relatively unbiased sample
95 of young women, and an alternative sentinel surveillance population to blood donors. Testing an
96 aliquot of blood for antibodies to SARS-CoV-2 is feasible as a venous blood sample (5ml) is already
97 taken to screen mothers for malaria, HIV and syphilis at their first ANC visit. We aimed to determine
98 the prevalence of antibodies against SARS-CoV-2 in mothers attending ANC at three referral
99 hospitals in Kenya.

100 **Methods**

101 **Setting**

102 In a collaboration between the Kenyan Ministry of Health (MOH) and KEMRI-Wellcome Trust
103 Research Programme (KWTRP), three referral hospitals were engaged. Kenyatta National Hospital
104 (KNH) is the national referral tertiary hospital located in Nairobi, the country's capital city,
105 approximately 3km from the central business district. The population of Nairobi city was 4,397,073 in
106 2019(4). Busia County Teaching & Referral Hospital (BCTRH) serves Busia County, an area of
107 1628 km², with a population of 893,681 (548/ km²). Kilifi County Hospital (KCH) is the county
108 referral hospital in Kilifi Town. Kilifi county covers an area of 12,000 km², with a predominantly
109 rural population of 1.4 million (116/km²)(4).

110 **Study population**

111 All women attending ANC for the first time, who provided a routine blood sample at their clinic visit,
112 were included in the study. Women who did not provide a sample at their first antenatal care visit, or
113 women attending their second or subsequent ANC visit, were excluded.

114 **Sample collection and processing**

115 In Kenya, a 5ml blood sample is routinely collected at the first ANC visit. After testing for malaria,
116 syphilis and HIV in the hospital laboratory, the residual volume is usually discarded. In this study, all
117 residual samples were set aside and collected daily for SARS-CoV-2 sero-surveillance. Where
118 possible, the following data were collected from hospital records and linked to the residual sample
119 identity number: date of sample, age, sub-county of residence, trimester of pregnancy, presence or
120 absence of COVID19-like symptoms in the last month and COVID-19 vaccination status ascertained
121 via verbal report confirmed via SMS or certificate. No personal identifiers were collected. All samples
122 were tested at the KWTRP laboratories for IgG to SARS-CoV-2 whole spike protein using an
123 adaptation of the Krammer Enzyme Linked Immunosorbent Assay (ELISA)(6). Validation of this
124 assay is described in detail elsewhere(10). Results were expressed as the ratio of test OD to the OD of
125 the plate negative control; samples with OD ratios greater than two were considered positive for
126 SARS-CoV-2 IgG. Sensitivity, estimated in 174 PCR positive Kenyan adults and a panel of 5 sera
127 from the National Institute of Biological Standards in the UK was 92.7% (95% CI 87.9-96.1%);
128 specificity, estimated in 910 serum samples from Kilifi drawn in 2018 was 99.0% (95% CI 98.1-
129 99.5%)(10).

130 **Analysis**

131 We estimated the proportion of samples seropositive for IgG to SARS-CoV-2. Sampling at least 135
132 women per month from each hospital would provide estimates of seroprevalence in the range 3-25%
133 with a precision of 3-7%. Bayesian modelling was used to adjust seroprevalence estimates for the
134 sensitivity and specificity of the assay. Non-informative priors were used for each parameter

135 (sensitivity, specificity and proportion true positive) and the models were fitted using the RStan
136 software package(19) (see supplementary files for code). Sub-county population densities were
137 extracted from the Kenya National Bureau of Statistics' database(4).

138 To account for the effects of waning IgG in repeated cross-sectional samples, we fitted a two-
139 component mixture model to the \log_2 OD ratios in unvaccinated individuals. In this model, we
140 assumed that antibody levels follow a normal distribution in previously uninfected individuals and a
141 skew-normal in previously infected individuals. To fit the model, we fixed the standard deviation of
142 the negative component at the value observed in pre-COVID 19 samples. The remaining parameters
143 were estimated using RStan. Details of the priors used in the estimation have been described
144 elsewhere(20).

145 **Patient and Public Involvement**

146 The study was conducted as anonymous public health surveillance at the request of the Kenyan MOH,
147 in response to the COVID-19 pandemic. The study directly addressed the needs of the MOH by
148 providing some information on the extent of the spread of SARS-CoV-2 pandemic within Kenya. The
149 public were not involved in the conceptualisation or implementation of this study. The need for
150 individual informed consent from the women whose samples were studied was waived, the protocol
151 was approved by the Scientific and Ethics Review Unit (SERU) of the Kenya Medical Research
152 Institute (Protocol SSC 4085), the Kenyatta National Hospital – University of Nairobi Ethics
153 Review Committee (Protocol P327/06/2020) and the Busia & Kilifi County health management
154 teams.

155 **Results**

156 **Crude and adjusted seroprevalence across time and location**

157 In Nairobi, samples were collected in three rounds: round 1, median date 11th August 2020, round 2,
158 median date 22 February 2021, and round 3, median date 30 September 2021. In these time periods,

159 706 women (93%) provided a sample (Supplementary Figure 1). Women were aged between 17 and
160 45 years (mean 31 years); 275 (40%) attended their first antenatal care visit during their third
161 trimester of pregnancy, although this differed significantly between the rounds: 62% in August 2020,
162 28% in February 2021 and 35% in September 2021 ($p < 0.001$; Supplementary Table 1). A total of 632
163 (90%) reported residence in 16 different sub-counties of Nairobi, 267 (42%) of mothers were resident
164 in Embakasi North, East or West sub-counties, and 110 (17%) were resident in Dagoretti North or
165 South sub-counties. The proportion of participants living in high vs. low population density sub-
166 counties did not differ by round (supplementary Table 1). Among women who had data on symptoms
167 during the preceding month, 7% reported symptoms in the first two rounds, this significantly differed
168 from the third round where 43% reported symptoms, coinciding with the end of the cold season (June-
169 September). Symptoms were not associated with seropositivity, controlling for age (data not shown).
170 In Nairobi, seroprevalence, adjusted for the sensitivity and specificity of the ELISA, was 50% in
171 August 2020, 32% in February 2021 and 85% in September 2021 (Table 1). In October 2021, 12.7%
172 of women were vaccinated with at least one dose of COVID-19 vaccine, seroprevalence among the
173 unvaccinated was 82%.

174 In Busia, samples were collected in 2 rounds: round 1, median date 3rd May, and round 2, median date
175 5th October. In this time period a total of 567 first ANC visits were conducted; 567 (100%) provided a
176 sample (Supplementary Figure 1). Women were aged between 14 and 44 (mean age 27 years). Most
177 women (66%) attended their first ANC in their second trimester, although this differed by round (73%
178 in May and 60% in October ($p = 0.007$; Supplementary table 1). In May, 40% of women reported
179 symptoms in the last month, which differed significantly from October 2021 where 56% reported
180 symptoms. Symptoms were not associated with seropositivity, controlling for age (data not shown).
181 Adjusted seroprevalence in Busia increased from 31% in May 2021 to 71% in October 2021 (Table
182 2). Just 6 (2%) of women were vaccinated in October 2021, and seroprevalence remained 71% among
183 the unvaccinated.

184 **Table 1. Seroprevalence of IgG to SARS-CoV-2 among mothers attending antenatal care in Kenyatta National Hospital (KNH), Nairobi**

KNH	30 th July – 25 th August 2020				27 th Jan- 11 th March 2021				7 th September-19 th October 2021			
	Seroprevalence		Adjusted seroprevalence		Seroprevalence		Adjusted seroprevalence		Seroprevalence		Adjusted seroprevalence	
Nairobi	n / N	%	%	95% CI	n / N	%	%	95% CI	n / N	%	%	95% CI
All	91 / 196	46.4	49.9	42.1-58.2	80 / 265	30.2	32.1	26.2-38.4	193 / 245	78.8	84.9	78.3-91.5
Age												
17-29 years	39 / 93	41.9	44.9	33.8-56.9	28 / 101	27.7	29.6	20.7-39.2	82 / 101	81.2	87.2	77.9-95.7
30-45 years	44 / 90	48.9	52.5	41.1-63.7	47 / 141	33.3	35.7	27.3-44.3	107 / 139	77.0	83.0	74.0-91.7
Trimester												
First	7 / 17	41.2	44.9	21.2-70.1	27 / 83	32.5	35.0	24.1-46.4	48 / 60	80.0	85.5	73.0-96.1
Second	21 / 53	39.6	42.9	29.8-57.4	34 / 106	32.1	34.5	25.1-44.3	77 / 96	80.2	86.1	76.0-95.5
Third	58 / 114	50.9	54.7	44.6-64.6	18 / 75	24.0	25.8	16.4-37.0	64 / 84	76.2	81.6	71.2-91.7
Any symptoms in last month*												
Yes	7 / 12	58.3	61.2	33.3-86.1	3 / 18	16.7	20.8	5.5-42.2	80 / 106	75.5	81.2	71.3-90.5
No	78 / 172	45.3	48.7	40.2-57.5	77 / 247	31.2	33.3	26.9-40.0	113 / 139	81.3	87.5	79.3-95.1
Population density of sub-county of residence												
<20000/km ²	44 / 97	45.4	48.8	38.1-59.4	29 / 104	27.9	29.8	20.6-39.8	86 / 102	84.3	90.6	82.2-97.9
20-81000/km ²	39 / 79	49.4	53.1	41.0-65.7	40 / 124	32.3	34.6	25.9-44.1	85 / 115	73.9	79.5	70.3-88.5
COVID-19 vaccine status [†]												
Vaccinated	-	-	-	-	-	-	-	-	30 / 31	96.8	96.1	86.2-99.9
Unvaccinated	-	-	-	-	-	-	-	-	163 / 214	76.2	82.1	75.1-89.2

185
 186 * Women were asked about the full list of COVID-19 symptoms as per the MOH COVID-19 screening form i.e. fever/ chills, general weakness, cough, sore throat, runny
 187 nose, shortness of breath, diarrhoea, nausea/ vomiting, headache, irritability/ confusion, pain (muscular/ chest/ abdominal/ joint).

188 † Vaccination status (at least one dose) was not available for the first two rounds of data collection, vaccination began in Kenya in March 2021 and at first targeted specific
 189 groups only, we assume that the vaccine coverage among women attended ANC between 27th Jan-11th March was 0%.

190 Variations in seroprevalence by any of the explanatory variables were not statistically significant in any time period when tested with chi2 test.

191 **Table 2. Seroprevalence of IgG to SARS-CoV-2 among mothers attending antenatal care in Busia County Teaching & Referral Hospital (BCTRH),**
 192 **Busia**
 193

BCTRH, Busia	15 th April - 21 May 2021				20 September – 22 October 2021			
	Seroprevalence		Adjusted seroprevalence		Seroprevalence		Adjusted seroprevalence	
	n / N	%	%	95% CI	n / N	%	%	95% CI
All	78 / 270	28.9	30.6	24.7-37.1	195 / 297	65.7	70.7	64.1-77.4
Age								
17-29 years	3 / 14	21.4	26.0	6.5-51.4	128 / 203	63.1	67.8	59.8-76.0
30-45 years	2 / 7	28.6	35.3	7.4-71.3	58 / 84	69.0	74.2	62.7-85.4
Trimester								
First	18 / 51	35.3	38.2	25.1-52.6	50 / 78	64.1	68.7	56.6-80.1
Second	50 / 192	26.0	27.7	21.3-34.7	114 / 175	65.1	70.1	61.8-78.4
Third	7 / 22	31.8	35.3	17.3-55.8	26 / 39	66.7	71.2	54.3-86.4
Any symptoms in last month*								
Yes	37 / 109	33.9	36.4	26.6-46.2	107 / 164	65.2	70.1	61.6-78.8
No	41 / 161	25.5	27.0	19.6-35.1	84 / 129	65.1	70.0	60.4-79.3
COVID-19 vaccination status [†]								
Vaccinated	-	-	-	-	4 / 6	66.7	67.0	29.8-96.1
Unvaccinated	-	-	-	-	188 / 288	65.3	70.5	63.8-77.3

194 ¹DOB was only available for 22 women in the first round of data collection

195 * Women were asked about the full list of COVID-19 symptoms as per the MOH COVID-19 screening form i.e. fever/ chills, general weakness, cough, sore throat, runny
 196 nose, shortness of breath, diarrhoea, nausea/ vomiting, headache, irritability/ confusion, pain (muscular/ chest/ abdominal/ joint).

197 [†] Vaccination status (at least one dose) was not available for the first two rounds of data collection, vaccination began in Kenya in March 2021 and at first targeted specific
 198 groups only, we assume that the vaccine coverage among women attended ANC between 27th Jan-11th March was 0%.

199 Variations in seroprevalence by any of the explanatory variables were not statistically significant in any time period when tested with chi2 test.

200 In Kilifi, 1707 samples were collected between the 18th September 2020 and 22nd October 2021,
 201 collection was continuous apart from during the healthcare worker strike (December 2020 to February
 202 2021). No data were available on age, trimester, location, symptoms or COVID-19 vaccination status.
 203 Adjusted seroprevalence increased over the period of sample collection from 1% in September 2020
 204 to 63% in October 2021 (p=0.0001, Chi sq test for trend; Table 3).

205 **Table 3: Seroprevalence of IgG to SARS-CoV-2 among mothers attending antenatal care in**
 206 **Kilifi County Hospital (KCH), over time**

KCH, Kilifi ¹		Seroprevalence		Adjusted seroprevalence	
		n / N	%	%	95% CI
Month	Sept-Oct 2020	3 / 265	1.1	0.9	0.0-2.7
	Nov-Dec 2020	32 / 236	13.6	14.0	9.4-19.5
	Mar-Apr 2021	55 / 260	21.2	22.2	16.7-28.1
	May-Jun 2021	104 / 382	27.2	28.9	23.9-34.4
	Jul-Aug 2021	148 / 260	56.9	61.2	54.4-68.4
	Sept-Oct 2021	178 / 305	58.4	62.7	56.2-69.1

207 ¹ No age, trimester or symptom data were available from the ANC records at KCH. Months were combined into
 208 2-month batches due to low numbers

209

210 **Mixture model results**

211 When two distinct distributions were fitted to the data—corresponding to antibody levels in
 212 previously infected and previously uninfected individuals—there were substantial overlaps in the
 213 distributions, especially at low seroprevalences (Figure 1). As seroprevalence estimates increased, the
 214 distributions became more distinct. The mixture model produced estimates of cumulative incidence
 215 that were consistently higher than those of the threshold analysis except for the final round in Nairobi,
 216 where the results of both analyses were the same (85%) and the distributions hardly overlapped (85%;
 217 Figure 2). Median OD ratios among the unvaccinated, seropositive individuals increase over time in
 218 all three areas, potentially indicating natural boosting through re-infections (Figure 1, Supplementary
 219 Table 2).

220 **Figure 1. Mixture distributions fitted to anti-spike IgG antibody data collected in Kilifi (KCH),**
221 **Busia and Nairobi (KNH) .** The red distribution represents predicted responses in individuals
222 previously infected with SARS-CoV-2 and the blue distribution represents predicted responses in
223 previously uninfected individuals.

224 **Figure 2. Adjusted and modelled estimates of the cumulative incidence of SARS-CoV-2**
225 **infection.** Estimates are shown with 95% credible intervals.

226 **Discussion**

227 Surveillance for IgG antibodies to SARS-CoV-2 among mothers attending ANC services in three
228 county referral hospitals in Kenya has revealed evidence of a substantial amount of prior infection by
229 October 2021. Seroprevalence is currently highest in Nairobi, then Busia, then Kilifi, correlating with
230 the counties' population densities.

231 In Nairobi, in August 2020, just after the peak of the first wave of SARS-CoV-2 infections, mixture
232 modelling, which attempts to account for the wide range of OD ratios among those exposed to the
233 virus better than the simple threshold analysis(20), indicates a cumulative incidence of 75%, just 4
234 months after the start of the pandemic. At the same timepoint, 6,727 PCR-confirmed infections had
235 been registered across the city (<1% of the County's population; Supplementary Figure 2). In March
236 2021, a year after the pandemic began, seroprevalence was lower, 32%. This second group of women
237 reported residing in the same sub-counties and were on average the same age (supplementary table 1).
238 The high levels of transmission of the virus in these locations early in the pandemic may have meant
239 some of these women had been infected at some point in the last year, but had since seroreverted.
240 Data on the rate of seroreversion differs with the assay used(21) and the severity of the initial
241 infection(22); approximately 9-12% with mild symptoms may sero-revert 4-6 months post-
242 infection(23, 24). Additionally, such high seroprevalence earlier in the year may have reduced the
243 number susceptible and dampened transmission within the same communities by March 2021.
244 Modelling indicates the first wave could have predominantly affected communities of low-income

245 earners, more likely to use public hospitals, such as KNH, with the later waves affecting a group
246 including higher-income, private healthcare users(25). In October 2021, seroprevalence in a third
247 group of women was 85%, 76% among those unvaccinated. These women were very similar in age,
248 residence location and trimester to the second group. The survey was conducted just after the fourth
249 wave of cases in Kenya, natural boosting could have occurred in these communities if residents
250 encountered the virus repeatedly(26). This is supported by the higher median OD ratios among
251 unvaccinated, seropositive individuals in the third round compared to both of the previous rounds.
252 The proportion vaccinated with at least one dose (13%) is lower than the average for Nairobi adults at
253 this time of 34%(3), although nationally only 13.5% of the population were vaccinated with one dose
254 at this time point.

255 In Busia, seroprevalence in May 2021 was 31% using the threshold analysis, and 51% using the
256 mixture model analysis. The two distributions of OD ratios had a substantial amount of overlap
257 leading to uncertainty in the estimate from mixture modelling at this time point. Threshold
258 seroprevalence increased to 71% in October 2021. By 21st October 2021 only 2% of our study
259 population were vaccinated with at least one dose, lower than the nationally reported coverage of 8%
260 in Busia(3). Western Kenya was affected in the fourth wave of the pandemic in July-September 2021
261 and the seroprevalence represents a substantial amount of natural infection.

262 Seroprevalence steadily increased in Kilifi during the sampling timeframe to 63% (using the threshold
263 analysis) or 72% (using the mixture model analysis) in October 2021. The slower increase in
264 seroprevalence in Kilifi compared to Nairobi is consistent with modelling suggesting that the initial
265 wave of the COVID-19 pandemic was concentrated in urban centres, with subsequent spread
266 increasingly affecting rural areas(25); Kilifi County reported a marked increase in the number of
267 infections in December 2020 (Supplementary Figure 2).

268 A strength of this analysis is the use of a rigorously validated serological assay, using locally relevant
269 control populations and reference panels from the National Institute for Biological Standards and
270 Control (NIBSC) in the UK(27). The threshold used to define seropositivity was chosen to prioritise
271 specificity over sensitivity, i.e. to minimize the number of false positives. The very low crude
272 seroprevalence (0/82; 0%) in the first month of samples from Kilifi adds confirmation that the
273 specificity of this assay is very high.

274 Although sero-surveillance among pregnant women has been used as a proxy for population-based
275 SARS-CoV-2 surveillance in high income countries(28-34), the representativeness of the sample in
276 Kenya is unknown. A national survey in 2014 indicated 18% of the population utilised public
277 hospitals at their last visit to outpatient services (a further 40% utilized public health centres or
278 dispensaries). Utilisation of public health services was correlated with lower education levels(35).

279 The seroprevalence estimates from women attending ANC differ from the seroprevalence estimates
280 available from blood donor samples. The Nairobi seroprevalence of 50% in August is substantially
281 higher than the 10% seroprevalence reported among blood donors in the same county in June-August
282 2020(10), however in March 2021, 32% seroprevalence in ANC was lower than the estimated 62%
283 seroprevalence in blood donors(12). The majority of expectant mothers attending ANC in KNH
284 consistently came from 5 sub-counties close to the hospital, which are densely populated with low-
285 income earners(4). Blood transfusion donors are likely to be more heterogenous and widely
286 distributed across Nairobi including areas of lower population density and greater affluence. The
287 estimates from ANC in Kilifi in September 2020 (1%) and April 2021 (22%) were lower than the
288 14.1% seroprevalence reported among blood donors from Coastal Counties in September 2020 and
289 the 43% seroprevalence among blood donors in Jan-March 2021(10-12). Blood donations come from
290 across the county including urban centres such as Malindi, whereas women attending ANC in Kilifi
291 represent a less heterogenous semi-urban group. It is clear that viral transmission has been
292 heterogenous in terms of geography and socioeconomic status, seroprevalence estimates from

293 multiple different sentinel populations provide more reliable indicators of the development of the
294 pandemic than any one estimate alone.

295 The impact of pregnancy on susceptibility to SARS-CoV-2 infection is unclear(15); however,
296 comparisons of infected pregnant women with non-pregnant women of the same age suggests that a
297 similar proportion of infections become symptomatic(16). This would suggest a similar proportion of
298 pregnant and non-pregnant women mount a protective antibody response and seroprevalence
299 estimates are generalisable to non-pregnant women of the same age. In a comparison of samples from
300 blood donors and ANC in Australia, the two sample sets estimated seroprevalence within 0.1% of
301 each other, although overall prevalence was very low(36). Additionally, seroprevalence in blood
302 donors in Kenya did not differ by sex(10), suggesting that these results from pregnant women may be
303 generalisable to men between 17-45 years of age, residing in the same areas.

304 Our analysis is constrained by the nature of the anonymised surveillance data available. Data on age,
305 trimester and location for the women in Kilifi would have allowed more valid comparisons with data
306 from other sources. It is difficult to assess how comparable the different rounds from the same
307 location are, without more data. As discussed, we lack local data on the rate of antibody waning,
308 which is important to estimate cumulative incidence of infection from snapshot seroprevalence
309 estimates(37, 38). This is especially important in populations, like those reported here, where ongoing
310 transmission may cause ‘natural boosting’(37, 39, 40).

311 **Conclusions**

312 This seroprevalence study of women attending ANC clinics suggests there has been substantial,
313 unobserved transmission of SARS-CoV-2 within communities in Nairobi, Busia and Kilifi Counties.
314 However, it is becoming difficult to interpret the results of cross-sectional seroprevalence studies due
315 to the length of the pandemic(41). To attempt to account, to some extent, for antibody waning, we
316 have used mixture modelling, this suggests that 85% of the population using a public hospital in

317 Nairobi have been previously infected with SARS-COV-2. At least in the short-term, asymptomatic
318 infection is protective(26) and these seroprevalence estimates should be taken into account when
319 estimating population level immunity. Increases in antibody concentration over time implies an
320 increasing level of population protection that may be attributable to reinfections.

321 **Acknowledgements**

322 We thank the Kenyatta National Hospital, Busia Country Teaching & Referral Hospital and Kilifi
323 County Hospital employees who collected the samples during routine ANC visits and the women
324 themselves for providing samples for routine health screening. We thank Rebeccah Ayako, Evalyne
325 Akinyi and Cedrick Shikoli at the Institute of Primate Research for processing the ANC samples from
326 KNH. We thank F. Krammer for providing the plasmids used to generate the spike protein used in this
327 work. Development of SARS-CoV-2 reagents was partially supported by the NIAID Centres of
328 Excellence for Influenza Research and Surveillance (CEIRS) contract HHSN272201400008C. The
329 COVID-19 convalescent plasma panel (NIBSC 20/118) and research reagent for SARS-CoV-2 Ab
330 (NIBSC 20/130) were obtained from the NIBSC, UK. We also thank the WHO SOLIDARITY II
331 network for sharing of protocols and for facilitating the development and distribution of control
332 reagents. This paper has been published with the permission of the director, Kenya Medical Research
333 Institute.

334 *For the purpose of Open Access, the author has applied a CC-BY public copyright licence to any*
335 *author accepted manuscript version arising from this submission.*

336 **Funding**

337 This project was funded by the Wellcome Trust (grants 220991/Z/20/Z and 203077/Z/16/Z), the Bill
338 and Melinda Gates Foundation (INV-017547), and the Foreign Commonwealth and Development
339 Office (FCDO) through the East Africa Research Fund (EARF/ITT/039) and is part of an integrated

340 programme of SARS-CoV-2 sero-surveillance in Kenya led by KEMRI Wellcome Trust Research
341 Programme.

342 A.A. is funded by a DFID/MRC/NIHR/Wellcome Trust Joint Global Health Trials Award
343 (MR/R006083/1), J.A.G.S. is funded by a Wellcome Trust Senior Research Fellowship (214320) and
344 the NIHR Health Protection Research Unit in Immunisation, I.M.O.A. is funded by the United
345 Kingdom's Medical Research Council and Department For International Development through an
346 African Research Leader Fellowship (MR/S005293/1) and by the NIHR-MPRU at UCL (grant
347 2268427 LSHTM). G.M.W. is supported by a fellowship from the Oak Foundation. C.N.A. is funded
348 by the DELTAS Africa Initiative [DEL-15-003], and the Foreign, Commonwealth and Development
349 Office and Wellcome (220985/Z/20/Z). S.U. is funded by DELTAS Africa Initiative [DEL-15-003],
350 L.I.O.-O. is funded by a Wellcome Trust Intermediate Fellowship (107568/Z/15/Z). R.A is funded by
351 National Institute for Health Research (NIHR) (project reference 17/63/82) using UK aid from the UK
352 Government to support global health research.

353 The views expressed in this publication are those of the authors and not necessarily those of the
354 funding agencies

355 **Conflict of Interest**

356 All authors: No reported conflicts.

357 **Author contributions**

358 Conceptualisation: A. Agweyu, J. A. G. Scott, G. M. Warimwe, K. E. Gallagher

359 Data curation: G. Nyutu

360 Formal statistical analysis: K Gallagher, Christian Bottomley

361 Funding acquisition: A Agweyu J. A. G. Scott, G. M. Warimwe

362 Investigation (Data collection and Lab): R. Lucinde, D. Mugo, A. Karani, E. Gardiner, J. Gitonga, H.

363 Karanja, J. Nyagwange, J. Tuju, P. Wanjiku, E. Nzomo, E. Kamuri, K. Thurania, S. Agunda, L. B.

364 Ochola, E. Namdala, O Gaunya, R Okuku

365 Methodology: K. Gallagher, C Bottomley
366 Project Administration: R Lucinde,
367 Supervision: A Agweyu, J. A. G. Scott, G. M. Warimwe, K. E. Gallagher
368 Validation: K Gallagher, G Warimwe
369 Vizualisation: K Gallagher, R Aziza, C Bottomley
370 Original draft preparation: R Lucinde, K Gallagher
371 Review and Editing: R. Lucinde, D. Mugo, C. Bottomley, A. Karani, E. Gardiner, R Aziza, J.
372 Gitonga, H. Karanja, J. Nyagwange, J. Tuju, P. Wanjiku, E. Nzomo, E. Kamuri, K. Thurania, S.
373 Agunda, G. Nyutu, A. Etyang, I. M. O. Adetifa, E. Kagucia, S. Uyoga, M. Otiende, E. Otieno, L.
374 Ndwiga, C. N. Agoti, R. A. Aman, M. Mwangangi, P. Amoth, K. Kasera, A. Nyaguara , W. Ng'ang'a,
375 L. B. Ochola, E. Namdala, O Gaunya, R Okuku, E. Barasa, P. Bejon, B. Tsofa, L. I. Ochola-Oyier, G.
376 M. Warimwe, A. Agweyu, J. A. G. Scott, K. E. Gallagher

377 References

- 378 1. World Health Organization. COVID-19 vaccines
379 <https://www.who.int/emergencies/diseases/novel-coronavirus-2019/covid-19-vaccines> [Accessed 08
380 Dec 2021] 2021 [
- 381 2. World Health Organization. Africa faces 470 million COVID-19 vaccine shortfall in 2021. 16
382 September 2021 [https://www.afro.who.int/news/africa-faces-470-million-covid-19-vaccine-shortfall-](https://www.afro.who.int/news/africa-faces-470-million-covid-19-vaccine-shortfall-2021)
383 [2021](https://www.afro.who.int/news/africa-faces-470-million-covid-19-vaccine-shortfall-2021) 2021 [
- 384 3. Ministry of Health GoK. UPDATES ON COVID-19 VACCINATION EXERCISE 21 October
385 2021 <https://www.health.go.ke/#1621663315215-d6245403-4901>
- 386 4. Kenya National Bureau of Statistics. Population and Housing Census (www.knbs.or.ke). 2019.
- 387 5. Seedat S, Chemaitelly H, Ayoub H, Makhoul M, Mumtaz GR, Kanaani ZA, et al. SARS-CoV-2
388 infection hospitalization, severity, criticality, and fatality rates. medRxiv. 2020:2020.11.29.20240416.
- 389 6. Amanat F, Nguyen T, Chromikova V, Strohmeier S, Stadlbauer D, Javier A, et al. A serological
390 assay to detect SARS-CoV-2 seroconversion in humans. medRxiv. 2020:2020.03.17.20037713.
- 391 7. Lassaunière R, Frische A, Harboe ZB, Nielsen AC, Fomsgaard A, Krogfelt KA, et al.
392 Evaluation of nine commercial SARS-CoV-2 immunoassays. medRxiv. 2020:2020.04.09.20056325.
- 393 8. Whitman JD, Hiatt J, Mowery CT, Shy BR, Yu R, Yamamoto TN, et al. Test performance
394 evaluation of SARS-CoV-2 serological assays. medRxiv. 2020:2020.04.25.20074856.
- 395 9. Caini S, Bellerba F, Corso F, Diaz-Basabe A, Natoli G, Paget J, et al. Meta-analysis of
396 diagnostic performance of serological tests for SARS-CoV-2 antibodies and public health
397 implications. medRxiv. 2020:2020.05.03.20084160.
- 398 10. Uyoga S, Adetifa IMO, Karanja HK, Nyagwange J, Tuju J, Wanjiku P, et al. Seroprevalence of
399 anti-SARS-CoV-2 IgG antibodies in Kenyan blood donors. Science (New York, NY).
400 2020:eabe1916.
- 401 11. Adetifa IMO, Uyoga S, Gitonga JN, Mugo D, Otiende M, Nyagwange J, et al. Temporal trends
402 of SARS-CoV-2 seroprevalence in transfusion blood donors during the first wave of the COVID-19
403 epidemic in Kenya. medRxiv. 2021:2021.02.09.21251404.
- 404 12. Uyoga S, Adetifa IMO, Otiende M, Yegon C, Agweyu A, Warimwe GM, et al. Prevalence of
405 SARS-CoV-2 Antibodies From a National Serosurveillance of Kenyan Blood Donors, January-March
406 2021. Jama. 2021;326(14):1436-8.
- 407 13. Montana LS, Mishra V, Hong R. Comparison of HIV prevalence estimates from antenatal care
408 surveillance and population-based surveys in sub-Saharan Africa. Sexually Transmitted Infections.
409 2008;84(Suppl 1):i78-i84.
- 410 14. Kigadye RM, Klokke A, Nicoll A, Nyamuryekung'e KM, Borgdorff M, Barongo L, et al.
411 Sentinel surveillance for HIV-1 among pregnant women in a developing country: 3 years' experience
412 and comparison with a population serosurvey. AIDS (London, England). 1993;7(6):849-55.
- 413 15. Wastnedge EAN, Reynolds RM, van Boeckel SR, Stock SJ, Denison FC, Maybin JA, et al.
414 Pregnancy and COVID-19. Physiol Rev. 2021;101(1):303-18.
- 415 16. Allotey J, Stallings E, Bonet M, Yap M, Chatterjee S, Kew T, et al. Clinical manifestations,
416 risk factors, and maternal and perinatal outcomes of coronavirus disease 2019 in pregnancy: living
417 systematic review and meta-analysis. BMJ. 2020;370:m3320.
- 418 17. Hill J, Patrick HS, Ananth CV, O'Brien D, Sernal S, Horgan R, et al. Obstetrical outcomes and
419 follow-up for patients with asymptomatic COVID-19 at delivery: a multicenter prospective cohort
420 study. Am J Obstet Gynecol MFM. 2021;3(6):100454.
- 421 18. Kenya National Bureau of S, Ministry of HK, National ACCK, Kenya Medical Research I,
422 National Council for P, Development/Kenya. Kenya Demographic and Health Survey 2014.
423 Rockville, MD, USA; 2015.
- 424 19. Stan Development Team. RStan: the R interface to Stan. R package version 2.21. 2, [http://mc-](http://mc-stan.org/)
425 [stan.org/](http://mc-stan.org/). 2020 [
- 426 20. Bottomley C, Otiende M, Uyoga S, Gallagher K, Kagucia EW, Etyang AO, et al. Quantifying
427 previous SARS-CoV-2 infection through mixture modelling of antibody levels. Nature
428 Communications. 2021;12(1):6196.

- 429 21. Eyre DW, Lumley SF, O'Donnell D, Stoesser NE, Matthews PC, Howarth A, et al. Stringent
430 thresholds for SARS-CoV-2 IgG assays result in under-detection of cases reporting loss of taste/smell.
431 medRxiv. 2020:2020.07.21.20159038.
- 432 22. Ibarrondo FJ, Fulcher JA, Goodman-Meza D, Elliott J, Hofmann C, Hausner MA, et al. Rapid
433 Decay of Anti-SARS-CoV-2 Antibodies in Persons with Mild Covid-19. *New England Journal of*
434 *Medicine*. 2020;383(11):1085-7.
- 435 23. Duysburgh E, Mortgat L, Barbezange C, Dierick K, Fischer N, Heyndrickx L, et al. Persistence
436 of IgG response to SARS-CoV-2. *The Lancet Infectious Diseases*. 2021;21(2):163-4.
- 437 24. UK Biobank. UK Biobank Serology Study (report at
438 https://www.ukbiobank.ac.uk/media/x0nd5sul/ukb_serologystudy_report_revised_6months_jan21.pdf
439). 2021.
- 440 25. Ojal J, Brand SP, Were V, Okiro EA, Kombe IK, Mburu C, et al. Revealing the extent of the
441 COVID-19 pandemic in Kenya based on serological and PCR-test data. medRxiv.
442 2020:2020.09.02.20186817.
- 443 26. Boyton RJ, Altmann DM. The immunology of asymptomatic SARS-CoV-2 infection: what are
444 the key questions? *Nat Rev Immunol*. 2021;21(12):762-8.
- 445 27. Giada Mattiuzzo, Emma M. Bentley, Mark Hassall, Stephanie Routley, Samuel Richardson,
446 Valentina Bernasconi, et al. Expert Committee on Biological Standardisation: Establishment of the
447 WHO International Standard and Reference Panel for anti-SARS-CoV-2 antibody; Geneva 9-10
448 December 2020. 2020.
- 449 28. Crovetto F, Crispi F, Llurba E, Figueras F, Gomez-Roig MD, Gratacos E. Seroprevalence and
450 clinical spectrum of SARS-CoV-2 infection in the first versus third trimester of pregnancy. medRxiv.
451 2020:2020.06.17.20134098.
- 452 29. Mattern J, Vauloup-Fellous C, Zakaria H, Benachi A, Carrara J, Letourneau A, et al. Post
453 lockdown COVID-19 seroprevalence and circulation at the time of delivery, France. *PLoS One*.
454 2020;15(10):e0240782.
- 455 30. Flannery DD, Gouma S, Dhudasia MB, Mukhopadhyay S, Pfeifer MR, Woodford EC, et al.
456 SARS-CoV-2 seroprevalence among parturient women in Philadelphia. *Science immunology*.
457 2020;5(49).
- 458 31. Cosma S, Borella F, Carosso A, Sciarrone A, Cusato J, Corcione S, et al. The "scar" of a
459 pandemic: Cumulative incidence of COVID-19 during the first trimester of pregnancy. *Journal of*
460 *medical virology*. 2020.
- 461 32. Villalain C, Herraiz I, Luczkowiak J, Pérez-Rivilla A, Folgueira MD, Mejía I, et al.
462 Seroprevalence analysis of SARS-CoV-2 in pregnant women along the first pandemic outbreak and
463 perinatal outcome. *PLoS One*. 2020;15(11):e0243029.
- 464 33. Lumley SF, Eyre DW, McNaughton AL, Howarth A, Hoosdally S, Hatch SB, et al. SARS-
465 CoV-2 antibody prevalence, titres and neutralising activity in an antenatal cohort, United Kingdom,
466 14 April to 15 June 2020. *Eurosurveillance*. 2020;25(42).
- 467 34. Haizler-Cohen L, Davidov A, Blitz MJ, Fruhman G. Severe acute respiratory syndrome
468 coronavirus 2 antibodies in pregnant women admitted to labor and delivery units. *American journal of*
469 *obstetrics and gynecology*. 2020.
- 470 35. Ministry of Health GoK. 2013 KENYA HOUSEHOLD HEALTH EXPENDITURE AND
471 UTILISATION SURVEY. Nairobi; 2014.
- 472 36. Gidding HF, Machalek DA, Hendry AJ, Quinn HE, Vette K, Beard FH, et al. Seroprevalence of
473 SARS-CoV-2-specific antibodies in Sydney, Australia following the first epidemic wave in 2020.
474 *Med J Aust* 2020; [https://www.mja.com.au/journal/2020/seroprevalence-sars-cov-2-specific-](https://www.mja.com.au/journal/2020/seroprevalence-sars-cov-2-specific-antibodies-sydney-australia-following-first)
475 [antibodies-sydney-australia-following-first](https://www.mja.com.au/journal/2020/seroprevalence-sars-cov-2-specific-antibodies-sydney-australia-following-first) [Preprint, 2 November 2020]. 2020.
- 476 37. Huang AT, Garcia-Carreras B, Hitchings MDT, Yang B, Katzelnick LC, Rattigan SM, et al. A
477 systematic review of antibody mediated immunity to coronaviruses: kinetics, correlates of protection,
478 and association with severity. *Nature Communications*. 2020;11(1):4704.
- 479 38. Buss LF, Prete CA, Jr., Abraham CMM, Mendrone A, Jr., Salomon T, de Almeida-Neto C, et
480 al. Three-quarters attack rate of SARS-CoV-2 in the Brazilian Amazon during a largely unmitigated
481 epidemic. *Science (New York, NY)*. 2021;371(6526):288-92.

- 482 39. Le Bert N, Tan AT, Kunasegaran K, Tham CYL, Hafezi M, Chia A, et al. SARS-CoV-2-
483 specific T cell immunity in cases of COVID-19 and SARS, and uninfected controls. *Nature*.
484 2020;584(7821):457-62.
- 485 40. Otieno G, Murunga N, Agoti C, Gallagher K, Awori J, Nokes D. Surveillance of endemic
486 human coronaviruses (HCoV-NL63, OC43 and 229E) associated with childhood pneumonia in Kilifi,
487 Kenya [version 2; peer review: 2 approved]. *Wellcome Open Research*. 2020;5(150).
- 488 41. Bottomley C, Otiende M, Uyoga S, Gallagher K, Kagucia EW, Etyang AO, et al. Improving
489 SARS-CoV-2 cumulative incidence estimation through mixture modelling of antibody levels.
490 *medRxiv*. 2021:2021.04.09.21254250.

491

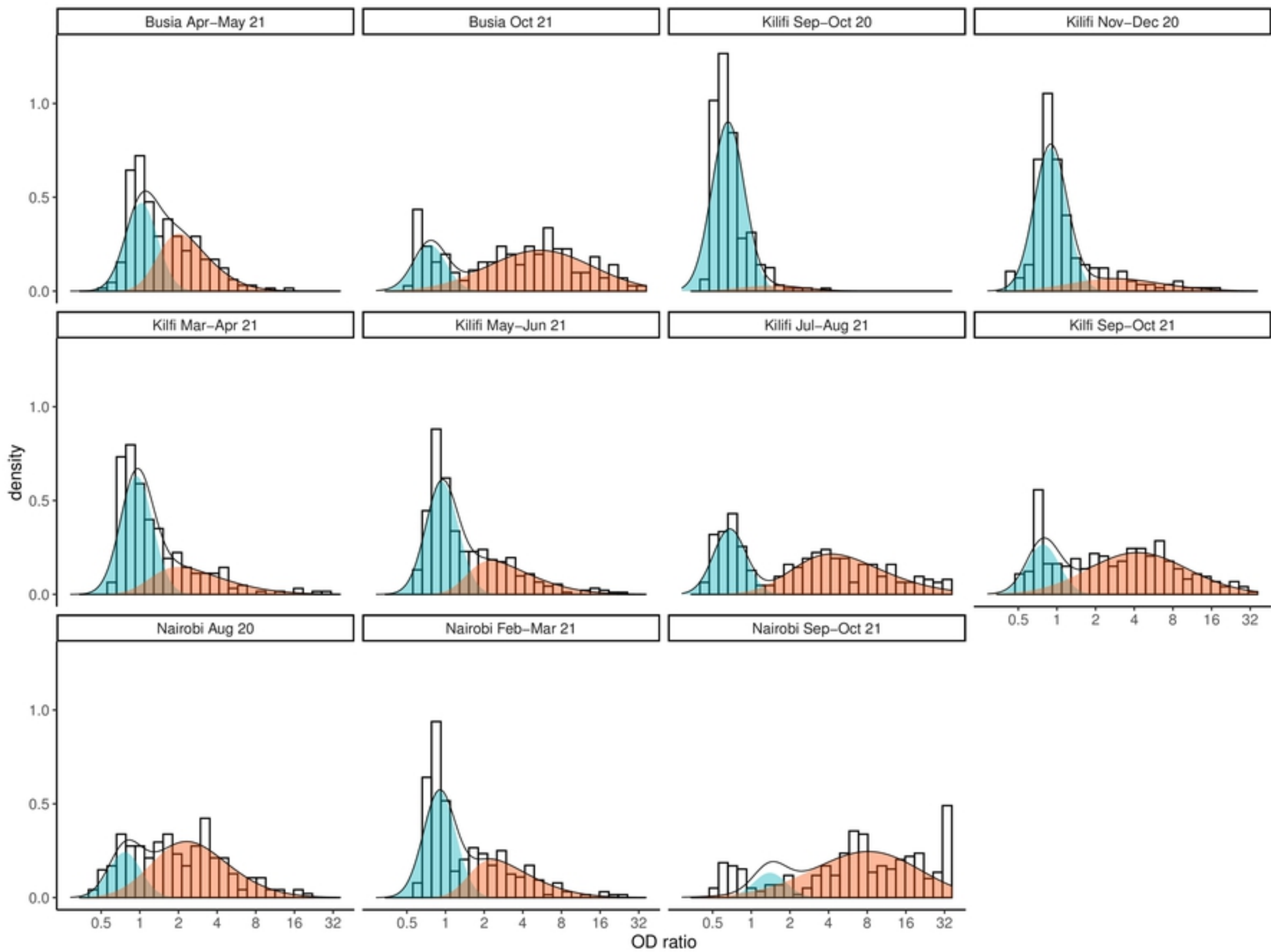


Figure 1

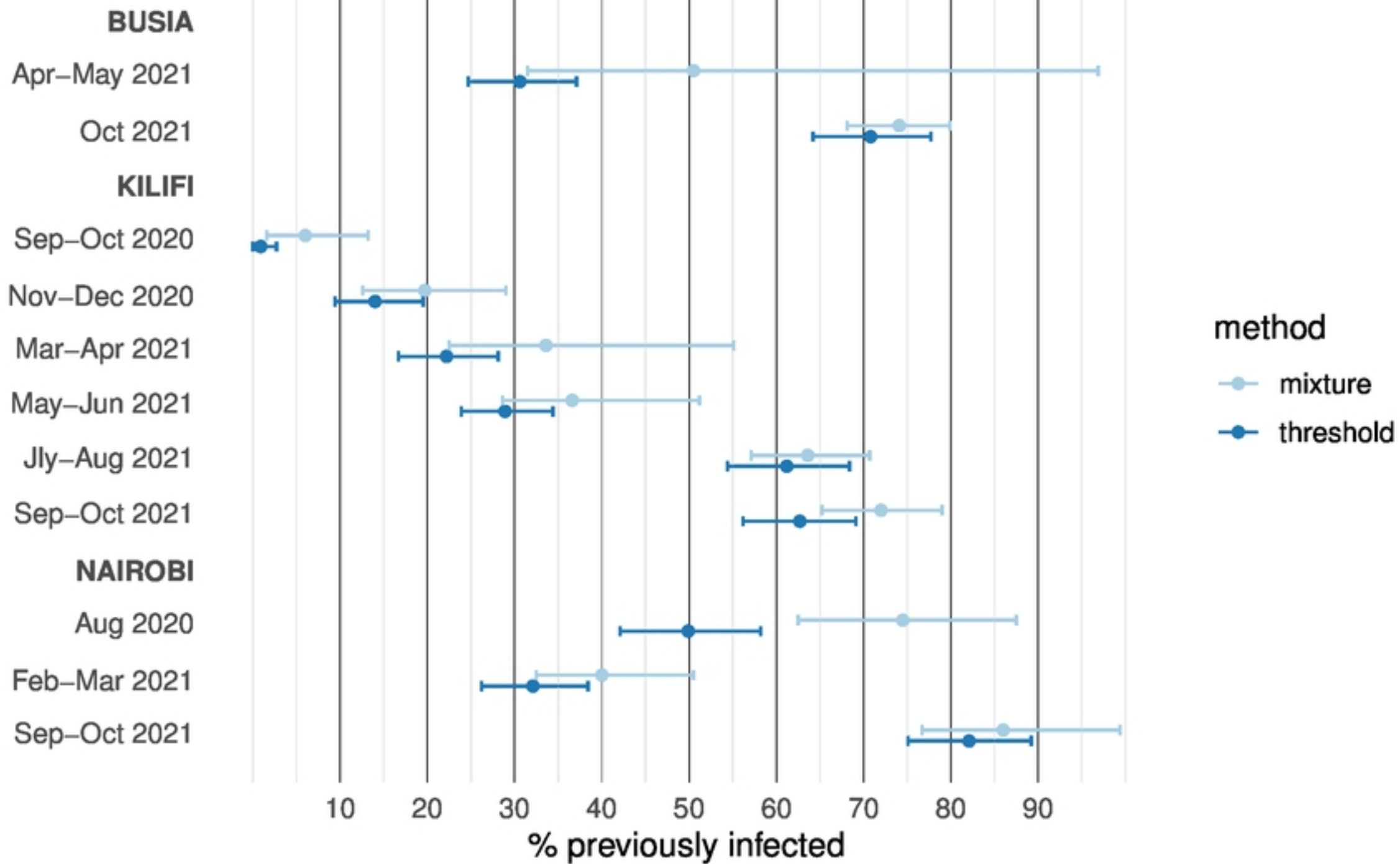


Figure 2