

Supplementary Material - Estimating the impact of implementation and timing of COVID-19 vaccination programme in Brazil: a counterfactual analysis

Leonardo Souto Ferreira^{1,2}, Flavia Maria Darcie Marquitti^{2,3,*}, Rafael Lopes Paixão da Silva^{1,2}, Marcelo Eduardo Borges², Marcelo F C Gomes^{2,4}, Oswaldo G Cruz^{2,4}, Roberto André Kraenkel^{1,2}, Renato Mendes Coutinho^{2,5}, Paulo Inácio Prado^{2,6}, and Leonardo S Bastos^{2,4}

¹*Instituto de Física Teórica, Universidade Estadual Paulista, São Paulo, Brazil*

²*Observatório COVID-19 BR*

³*Instituto de Física 'Gleb Wataghin' and Instituto de Biologia, Universidade Estadual de Campinas, Campinas, Brazil*

⁴*Programa de Computação Científica, Fundação Oswaldo Cruz, Rio de Janeiro, Brazil*

⁵*Centro de Matemática, Computação e Cognição, Universidade Federal do ABC, Santo André, Brazil*

⁶*Instituto de Biociências, Universidade de São Paulo, São Paulo, Brazil*

* *Corresponding author: flamarquitti@gmail.com*

This supplementary material contains a graphical measurement of fitting quality, a figure showing the timing when vaccination reached perceptible coverage in each state and age group, a figure of vaccine coverage during the period analysed and the graphical results for individual states. The tabulated results for each state is available in our repository at <https://github.com/covid19br/bayes-vacina-paper> together with the code used to generate the results.

Table 1: Name codes and their respective states

Name Code	State
North Region	
AC	Acre
AM	Amazonas
AP	Amapá
PA	Pará
RR	Roraima
RO	Rondônia
TO	Tocantins
Northeast Region	
AL	Alagoas
BA	Bahia
CE	Ceará
MA	Maranhão
PB	Paraíba
PE	Pernambuco
PI	Piauí
RN	Rio Grande do Norte
SE	Sergipe
Southeast Region	
ES	Espírito Santo
MG	Minas Gerais
RJ	Rio de Janeiro
SP	São Paulo
Center-West Region	
DF	Distrito Federal
GO	Goiás
MS	Mato Grosso do Sul
MT	Mato Grosso
South Region	
PR	Paraná
RS	Rio Grande do Sul
SC	Santa Catarina

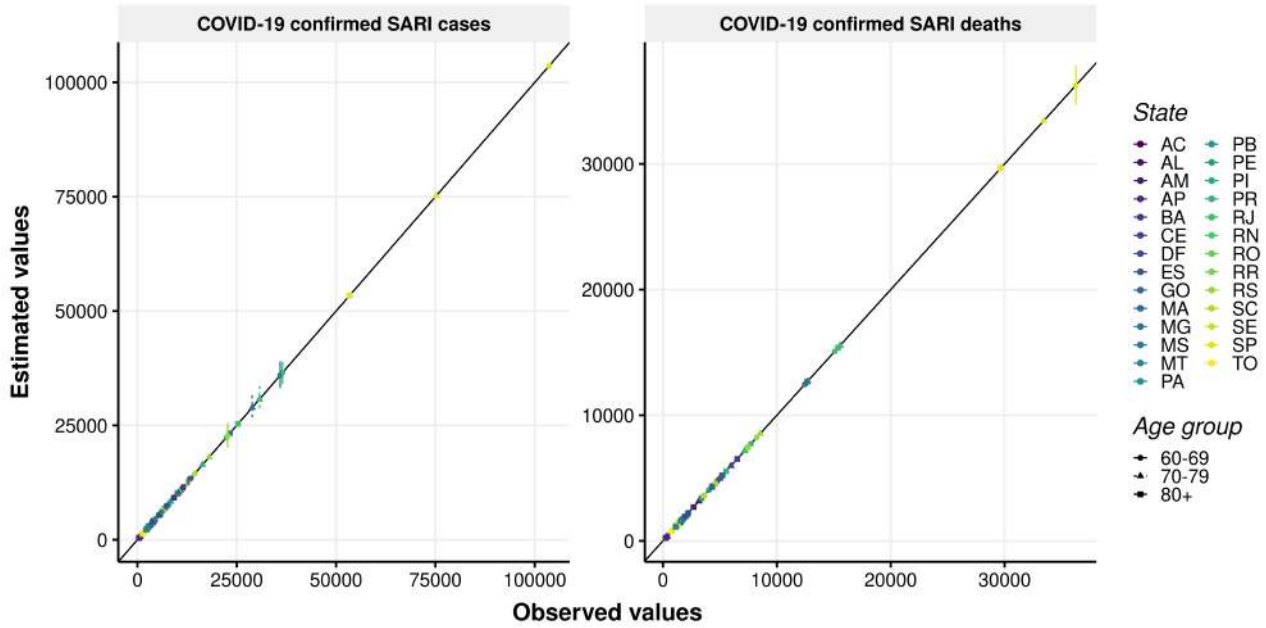


Figure S1: Estimated value of outcome (hospitalisation on the left and deaths on the right) as a function of the observed value, per state (color) and age group (point type). A black line with 1:1 relationship is plotted for reference.

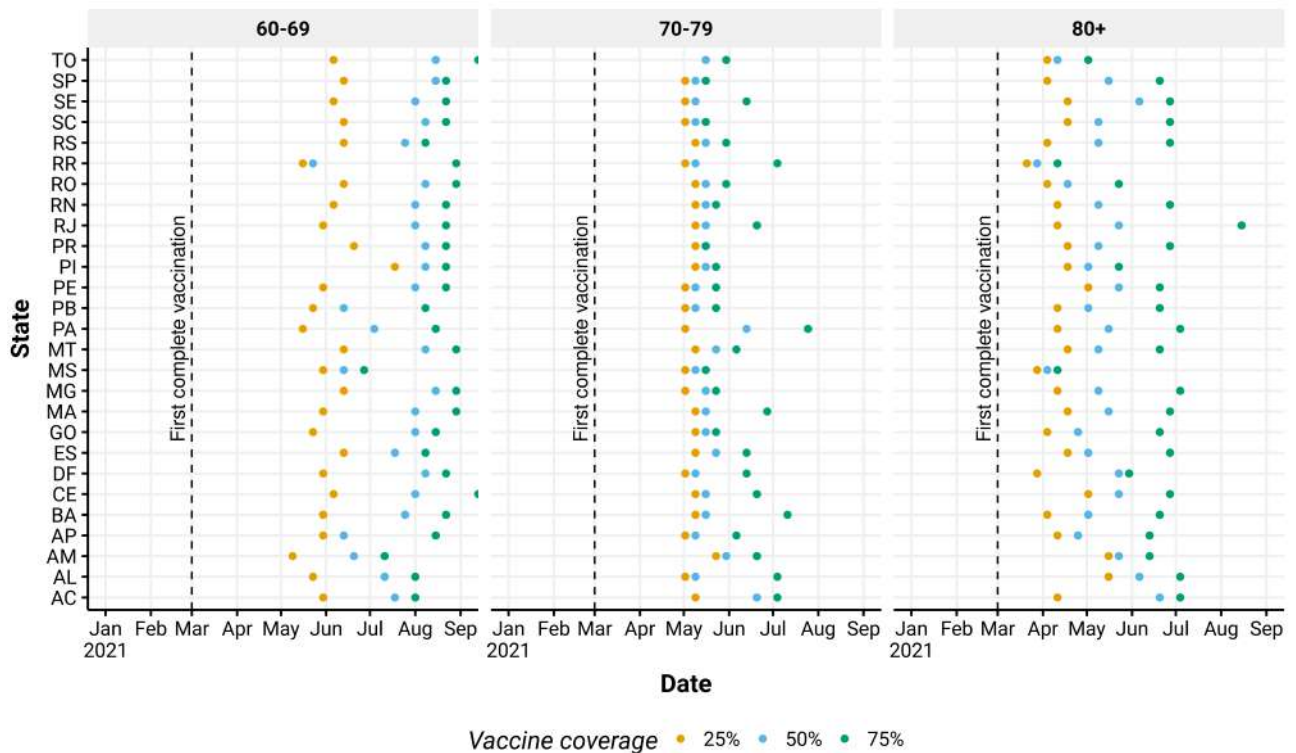


Figure S2: Week (x-axis) in which different vaccine coverage thresholds were reached (colors), by state (y axis) for the analysed age groups (panels). The dashed line denotes the day that the first vaccination could be completed considering the official start as January 17, 2021 (first dose + 28 days + second dose + 14 days, as the first vaccines were CoronaVac).

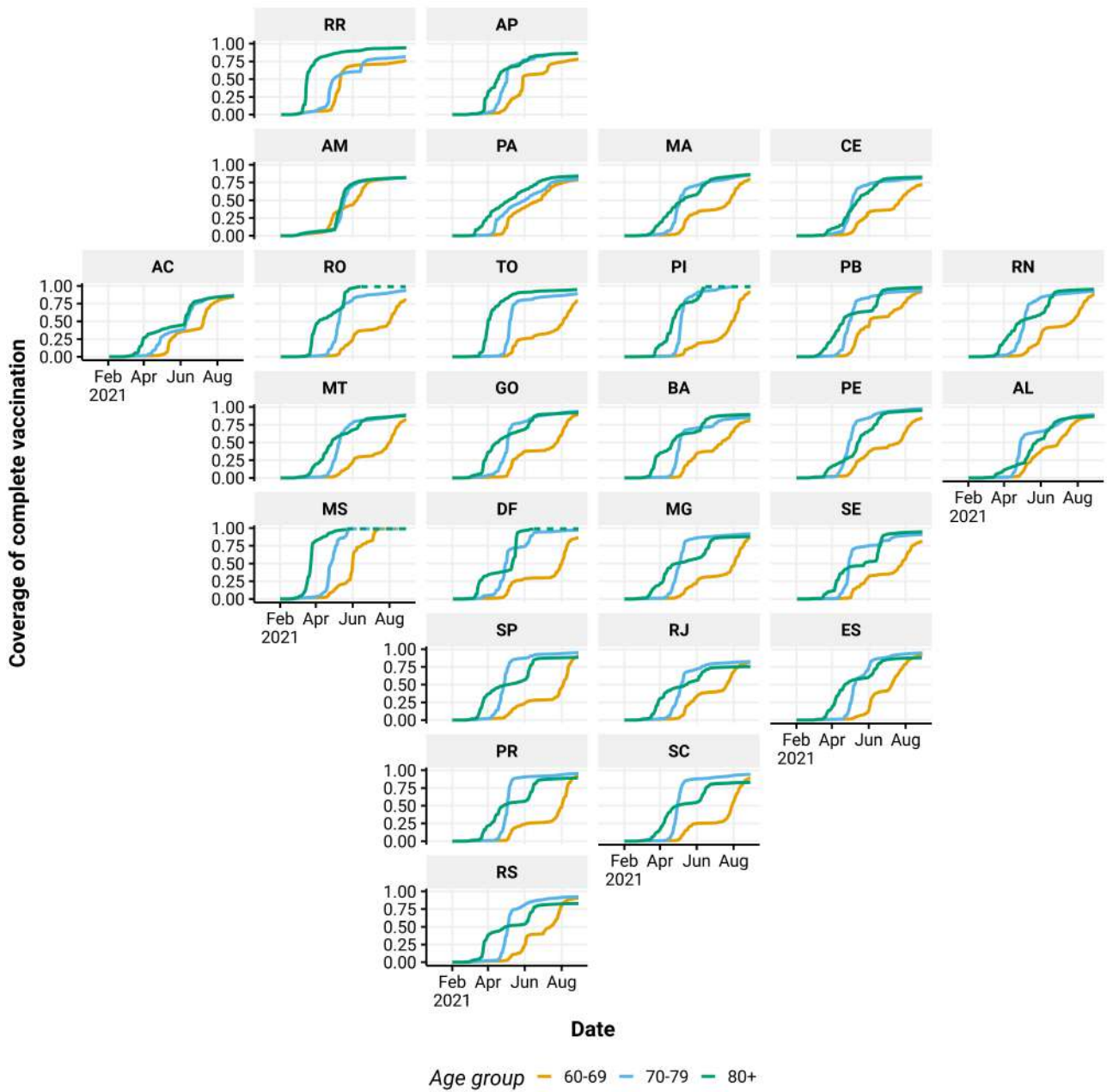


Figure S3: Vaccine coverage per age group. Due to imprecise estimates of population size, some age groups surpassed 100% coverage and these cases are denoted with a dashed line.

Table 2: Number of hospitalisations and deaths averted by COVID-19 vaccination, by state, by timing of vaccination rollout.

State	Outcome	Age group	Vaccination		
			Realized	4 weeks earlier	8 weeks earlier
AC	Hospitalisations	60-69	52 (15-92)	81 (26-140)	120 (42-199)
		70-79	44 (-6-93)	63 (1-126)	91 (-1-183)
		80+	39 (-2-79)	59 (2-115)	81 (4-154)
	Deaths	60-69	21 (6-37)	27 (4-52)	39 (0-80)
		70-79	14 (-5-33)	20 (-9-48)	29 (-13-69)
		80+	21 (5-38)	28 (6-52)	33 (6-62)
AL	Hospitalisations	60-69	345 (24-671)	585 (29-1,135)	883 (-11-1,762)
		70-79	329 (40-619)	497 (24-936)	677 (-10-1,358)
		80+	128 (-157-413)	95 (-281-478)	56 (-410-532)
	Deaths	60-69	120 (17-216)	193 (8-375)	271 (-23-553)
		70-79	76 (-42-183)	109 (-81-279)	140 (-130-381)
		80+	14 (-94-113)	24 (-114-152)	35 (-127-187)
AM	Hospitalisations	60-69	519 (-149-1,280)	722 (-118-1,677)	966 (-148-2,222)
		70-79	660 (9-1,325)	878 (11-1,748)	1,194 (-23-2,426)
		80+	509 (65-964)	680 (88-1,290)	931 (71-1,784)
	Deaths	60-69	350 (161-555)	514 (234-809)	737 (340-1,163)
		70-79	288 (113-458)	422 (160-675)	661 (266-1,047)
		80+	209 (49-370)	314 (78-553)	501 (127-887)
AP	Hospitalisations	60-69	60 (-50-172)	104 (-88-308)	160 (-150-487)
		70-79	-10 (-83-74)	-21 (-133-104)	-33 (-196-138)
		80+	43 (-39-125)	46 (-68-164)	48 (-92-197)
	Deaths	60-69	11 (-14-39)	18 (-19-56)	26 (-28-79)
		70-79	4 (-21-28)	5 (-29-38)	6 (-41-52)
		80+	-13 (-37-11)	-18 (-50-16)	-22 (-64-21)
BA	Hospitalisations	60-69	2,377 (1,632-3,160)	3,657 (2,665-4,674)	4,838 (3,288-6,398)
		70-79	954 (172-1,679)	1,256 (-30-2,496)	1,541 (-463-3,454)
		80+	1,468 (605-2,344)	1,902 (772-3,041)	2,292 (889-3,698)
	Deaths	60-69	297 (44-561)	530 (52-1,012)	837 (15-1,661)
		70-79	206 (-90-512)	283 (-212-761)	340 (-358-1,038)
		80+	379 (20-740)	415 (-70-887)	396 (-221-965)
CE	Hospitalisations	60-69	1,154 (224-2,052)	2,072 (227-3,897)	3,130 (-312-6,644)
		70-79	1,093 (12-2,063)	1,676 (-163-3,428)	2,247 (-620-4,864)
		80+	921 (-215-2,046)	1,259 (-551-3,127)	1,555 (-1,161-4,300)
	Deaths	60-69	609 (342-875)	1,030 (582-1,473)	1,456 (740-2,141)
		70-79	898 (473-1,314)	1,341 (706-1,975)	1,703 (860-2,542)
		80+	1,275 (758-1,755)	1,744 (1,011-2,445)	2,077 (1,109-2,991)
DF	Hospitalisations	60-69	1,572 (1,152-1,982)	2,037 (1,434-2,583)	2,630 (1,773-3,413)
		70-79	1,050 (644-1,483)	1,371 (826-1,947)	1,752 (1,060-2,484)
		80+	658 (366-997)	836 (467-1,262)	962 (534-1,436)
	Deaths	60-69	277 (116-427)	416 (171-646)	558 (224-870)
		70-79	310 (144-469)	456 (213-693)	553 (249-853)
		80+	219 (19-441)	235 (0-490)	221 (-55-506)
ES	Hospitalisations	60-69	78 (-88-235)	112 (-125-348)	166 (-198-528)
		70-79	151 (-29-322)	225 (-39-489)	327 (-61-714)
		80+	190 (64-325)	273 (87-465)	341 (112-589)
	Deaths	60-69	74 (-7-155)	130 (-29-296)	193 (-47-444)
		70-79	98 (21-178)	151 (33-278)	195 (44-363)
		80+	215 (116-324)	270 (147-407)	283 (130-445)
GO	Hospitalisations	60-69	3,232 (2,195-4,233)	4,208 (2,818-5,551)	5,216 (3,375-6,993)
		70-79	2,850 (1,883-3,718)	3,389 (2,151-4,423)	4,017 (2,525-5,268)
		80+	2,216 (1,521-2,943)	2,595 (1,764-3,484)	2,908 (1,976-3,899)
	Deaths	60-69	761 (409-1,138)	1,047 (491-1,621)	1,492 (638-2,379)
		70-79	674 (273-1,083)	908 (346-1,508)	1,208 (432-2,030)
		80+	736 (384-1,084)	962 (482-1,426)	1,023 (413-1,554)
MA	Hospitalisations	60-69	723 (385-1,063)	1,054 (266-1,799)	1,386 (-394-3,120)

		70-79	500 (57-895)	699 (10-1,376)	902 (-112-1,964)
		80+	588 (138-1,049)	718 (125-1,364)	821 (95-1,617)
	Deaths	60-69	138 (-14-299)	182 (-50-402)	248 (-126-604)
		70-79	408 (216-596)	519 (262-769)	651 (298-968)
		80+	329 (92-568)	425 (103-742)	501 (119-886)
MG	Hospitalisations	60-69	10,941 (8,768-13,164)	14,930 (12,157-17,645)	18,154 (14,432-22,146)
		70-79	9,628 (7,636-11,779)	11,839 (9,202-14,269)	13,821 (10,867-16,955)
		80+	6,080 (3,237-8,656)	7,518 (3,634-11,011)	8,672 (3,875-12,991)
Deaths	60-69	3,000 (2,095-3,919)	4,376 (2,812-5,838)	6,055 (3,520-8,527)	
	70-79	4,287 (3,366-5,127)	5,762 (4,538-6,911)	7,166 (5,601-8,642)	
	80+	3,658 (2,071-5,232)	4,639 (2,702-6,601)	5,244 (2,968-7,450)	
MS	Hospitalisations	60-69	418 (-48-867)	668 (-154-1,430)	827 (-405-2,018)
		70-79	361 (-64-811)	434 (-150-1,030)	488 (-511-1,543)
		80+	161 (-197-519)	102 (-378-566)	66 (-1,108-1,164)
Deaths	60-69	171 (46-300)	269 (32-508)	363 (-4-736)	
	70-79	255 (68-435)	269 (39-493)	281 (1-570)	
	80+	151 (-51-365)	151 (-76-390)	138 (-178-442)	
MT	Hospitalisations	60-69	227 (-264-700)	595 (-437-1,600)	1,139 (-661-2,901)
		70-79	-27 (-362-338)	-65 (-698-585)	-116 (-1,145-920)
		80+	104 (-189-409)	126 (-296-556)	147 (-396-714)
Deaths	60-69	73 (-60-213)	45 (-209-309)	7 (-414-441)	
	70-79	37 (-88-162)	42 (-126-218)	42 (-172-261)	
	80+	100 (-27-222)	105 (-48-250)	89 (-76-250)	
PA	Hospitalisations	60-69	1,319 (541-2,096)	1,906 (567-3,195)	2,602 (513-4,600)
		70-79	1,714 (1,084-2,301)	2,238 (1,547-2,900)	2,708 (1,742-3,549)
		80+	1,456 (907-2,015)	1,917 (1,120-2,712)	2,256 (1,239-3,316)
Deaths	60-69	374 (-14-774)	552 (-48-1,153)	748 (-97-1,622)	
	70-79	665 (173-1,114)	941 (204-1,594)	1,163 (209-2,007)	
	80+	355 (-42-802)	484 (-75-1,075)	594 (-120-1,326)	
PB	Hospitalisations	60-69	393 (144-642)	640 (192-1,086)	891 (69-1,666)
		70-79	561 (162-938)	748 (157-1,300)	933 (34-1,752)
		80+	470 (80-847)	599 (79-1,102)	724 (26-1,427)
Deaths	60-69	115 (-20-249)	197 (-49-427)	309 (-106-689)	
	70-79	107 (-114-320)	141 (-142-405)	171 (-167-488)	
	80+	187 (-40-443)	262 (-9-568)	316 (11-658)	
PE	Hospitalisations	60-69	413 (2-829)	726 (-9-1,499)	1,084 (-303-2,485)
		70-79	292 (-233-800)	454 (-516-1,393)	606 (-901-2,144)
		80+	205 (-293-698)	337 (-344-1,021)	468 (-428-1,381)
Deaths	60-69	240 (57-433)	408 (107-733)	601 (125-1,140)	
	70-79	389 (73-686)	584 (110-1,032)	746 (134-1,342)	
	80+	637 (365-915)	837 (452-1,225)	981 (488-1,478)	
PI	Hospitalisations	60-69	364 (137-607)	615 (201-1,040)	921 (194-1,657)
		70-79	299 (126-484)	459 (178-767)	645 (161-1,142)
		80+	220 (-2-468)	334 (-38-738)	446 (-104-1,038)
Deaths	60-69	8 (-41-54)	14 (-80-102)	23 (-160-204)	
	70-79	37 (-27-108)	66 (-47-193)	87 (-66-254)	
	80+	64 (-19-149)	89 (-27-205)	95 (-33-224)	
PR	Hospitalisations	60-69	5,414 (4,110-6,832)	7,169 (5,375-9,106)	8,482 (6,283-10,785)
		70-79	3,419 (2,112-4,684)	4,347 (2,674-6,130)	5,219 (3,111-7,535)
		80+	3,972 (3,069-4,891)	4,767 (3,678-5,885)	5,514 (4,202-6,820)
Deaths	60-69	1,216 (553-1,826)	1,582 (694-2,420)	2,017 (793-3,191)	
	70-79	1,795 (1,219-2,357)	2,163 (1,482-2,839)	2,588 (1,747-3,437)	
	80+	1,782 (1,331-2,231)	2,167 (1,611-2,718)	2,423 (1,779-3,071)	
RJ	Hospitalisations	60-69	6,457 (4,456-8,455)	8,254 (6,026-10,488)	10,013 (7,210-12,647)
		70-79	5,269 (3,255-7,237)	6,268 (4,003-8,581)	7,173 (4,712-9,582)
		80+	2,819 (213-5,217)	3,414 (11-6,626)	3,714 (-521-7,600)
Deaths	60-69	2,629 (1,724-3,504)	3,611 (2,291-4,814)	4,575 (2,797-6,189)	
	70-79	2,423 (1,390-3,439)	3,298 (1,911-4,709)	3,911 (2,188-5,654)	
	80+	2,492 (898-4,120)	2,949 (933-4,907)	3,256 (684-5,669)	
		60-69	286 (96-455)	556 (152-910)	895 (86-1,666)
	Hospitalisations				
RN					

		70-79	375 (153-615)	533 (177-923)	703 (126-1,333)
		80+	433 (161-707)	601 (166-1,054)	777 (146-1,465)
	Deaths	60-69	17 (-45-80)	51 (-65-165)	140 (-89-382)
		70-79	130 (28-228)	177 (30-331)	226 (16-443)
		80+	193 (49-328)	249 (42-441)	278 (12-523)
RO	Hospitalisations	60-69	138 (-8-284)	228 (-51-495)	322 (-185-811)
		70-79	204 (71-344)	327 (109-551)	501 (152-855)
		80+	165 (56-276)	251 (84-417)	331 (110-549)
Deaths	60-69	79 (29-129)	111 (32-185)	191 (55-316)	
	70-79	75 (22-124)	120 (30-197)	211 (56-346)	
	80+	44 (-3-88)	69 (-3-140)	79 (-15-165)	
RR	Hospitalisations	60-69	6 (-41-55)	7 (-61-78)	5 (-92-103)
		70-79	66 (27-104)	77 (25-132)	90 (19-169)
		80+	6 (-34-43)	10 (-44-62)	15 (-56-86)
Deaths	60-69	13 (-15-42)	13 (-20-47)	13 (-29-59)	
	70-79	-26 (-52-2)	-32 (-66-1)	-38 (-81-1)	
	80+	6 (-12-22)	6 (-16-27)	7 (-20-34)	
RS	Hospitalisations	60-69	5,153 (3,026-7,210)	7,920 (5,319-10,504)	9,715 (5,714-13,287)
		70-79	3,945 (2,407-5,430)	4,898 (2,407-7,536)	5,910 (2,338-9,704)
		80+	3,565 (2,272-4,826)	4,617 (2,784-6,440)	5,560 (3,258-7,960)
Deaths	60-69	914 (276-1,571)	1,487 (382-2,589)	2,234 (350-4,109)	
	70-79	1,794 (1,015-2,544)	2,477 (1,367-3,514)	3,424 (1,895-4,835)	
	80+	2,717 (2,082-3,429)	3,619 (2,733-4,605)	4,001 (2,932-5,102)	
SC	Hospitalisations	60-69	3,792 (2,845-4,654)	5,069 (3,835-6,244)	6,450 (4,827-8,080)
		70-79	2,470 (1,513-3,431)	3,206 (1,969-4,464)	4,088 (2,515-5,740)
		80+	1,954 (1,161-2,743)	2,442 (1,415-3,439)	2,945 (1,696-4,173)
Deaths	60-69	526 (132-924)	740 (161-1,313)	994 (160-1,820)	
	70-79	631 (148-1,146)	890 (201-1,612)	1,105 (224-2,010)	
	80+	1,254 (724-1,814)	1,593 (917-2,317)	1,810 (1,033-2,649)	
SE	Hospitalisations	60-69	202 (52-351)	359 (71-660)	635 (-105-1,357)
		70-79	207 (34-369)	389 (47-735)	632 (10-1,235)
		80+	164 (-8-326)	308 (-2-616)	443 (-18-923)
Deaths	60-69	35 (-5-74)	61 (-11-132)	89 (-109-285)	
	70-79	56 (8-107)	92 (1-188)	114 (-45-280)	
	80+	-16 (-76-47)	26 (-79-135)	79 (-92-260)	
SP	Hospitalisations	60-69	25,183 (21,396-29,046)	34,936 (28,393-41,287)	44,275 (32,947-55,943)
		70-79	19,517 (15,716-23,448)	23,549 (18,236-29,076)	28,553 (21,499-35,829)
		80+	11,156 (8,761-13,712)	13,828 (10,647-17,181)	15,556 (11,872-19,448)
Deaths	60-69	10,390 (9,153-11,742)	14,150 (12,600-15,797)	18,819 (16,494-21,280)	
	70-79	10,965 (9,662-12,258)	14,257 (12,536-15,957)	17,169 (15,012-19,287)	
	80+	10,245 (8,229-12,228)	12,281 (9,865-14,751)	13,326 (10,687-16,078)	
TO	Hospitalisations	60-69	177 (53-293)	219 (23-410)	240 (-72-548)
		70-79	33 (-93-145)	45 (-132-204)	56 (-194-279)
		80+	145 (-10-298)	171 (-17-356)	189 (-28-395)
Deaths	60-69	59 (23-95)	93 (40-147)	130 (52-210)	
	70-79	40 (-3-82)	54 (-4-112)	69 (-6-147)	
	80+	97 (43-151)	122 (54-191)	134 (59-210)	

1 Results

1.1 North Region

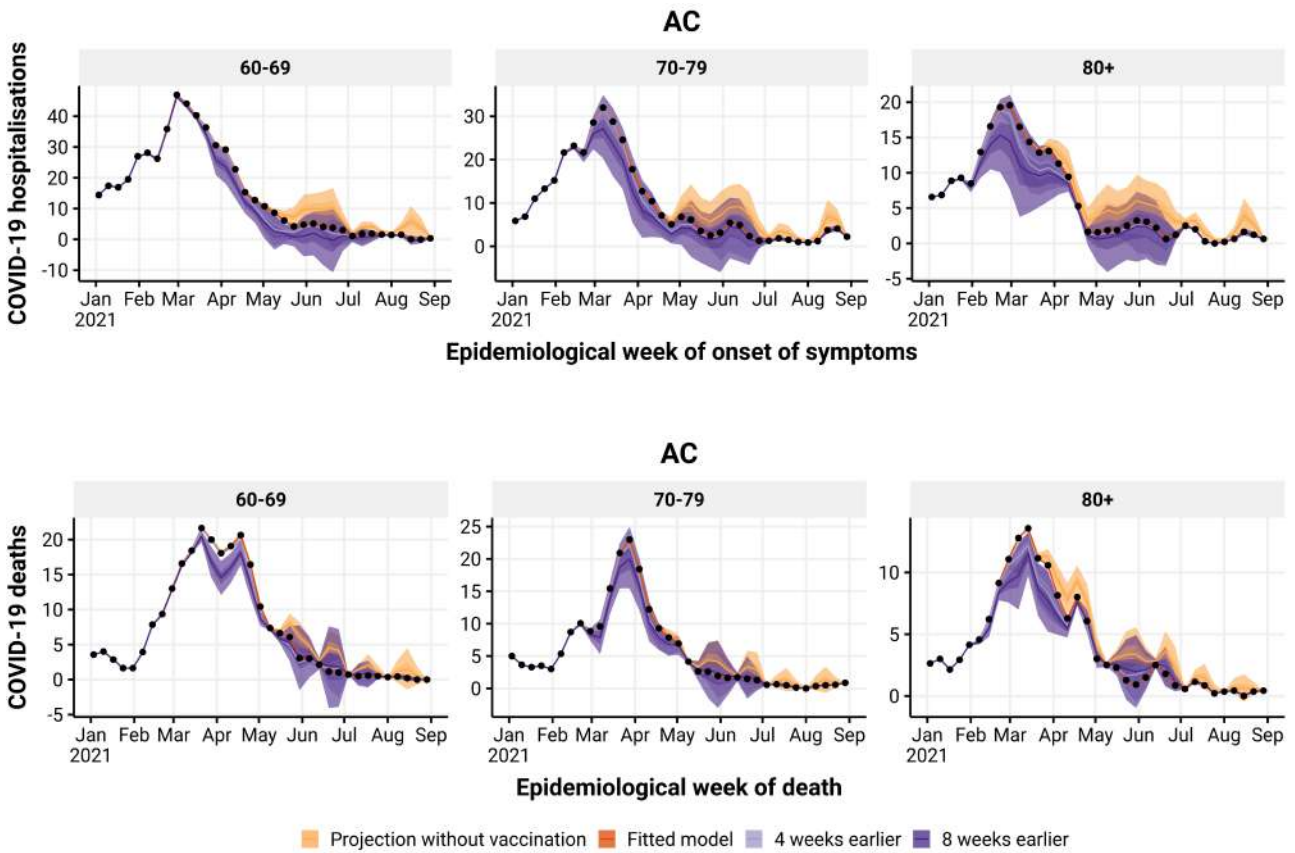


Figure S4: Estimated number of hospitalisations (top) and deaths (bottom) by epidemiological week with the realized (dark orange), no vaccination (light orange), 4 (light purple) and 8 (dark purple) weeks earlier vaccination rollout, by age group (panels), in AC state. The observed number of hospitalisations and deaths are given by the black points.

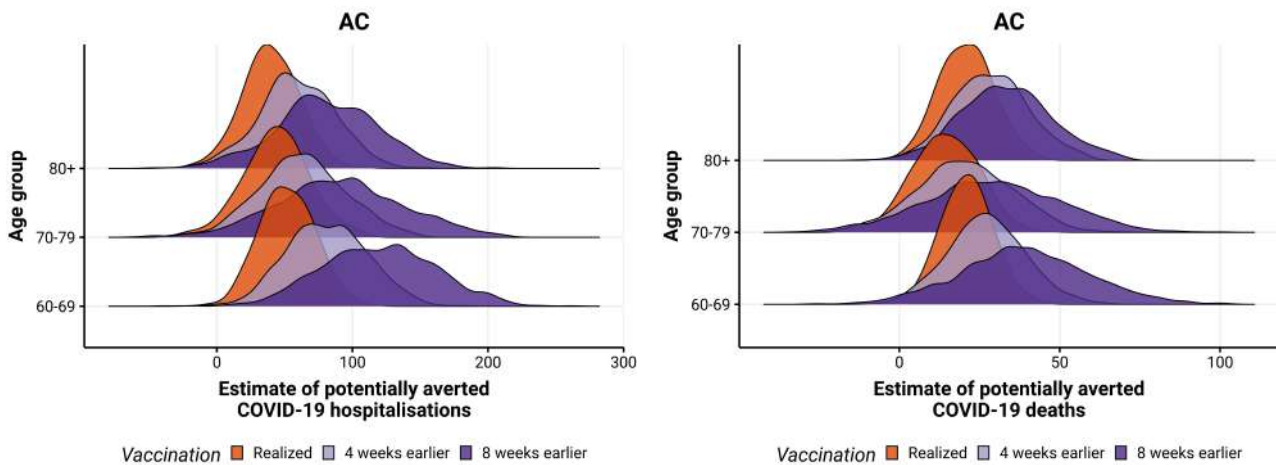


Figure S5: Posterior distribution of hospitalisations (left) and deaths (right) potentially averted by vaccination between 2021-01-01 and 2021-08-29 by age group, with the realized (orange), 4 (light purple) and 8 weeks earlier (dark purple) vaccination rollout in AC state.

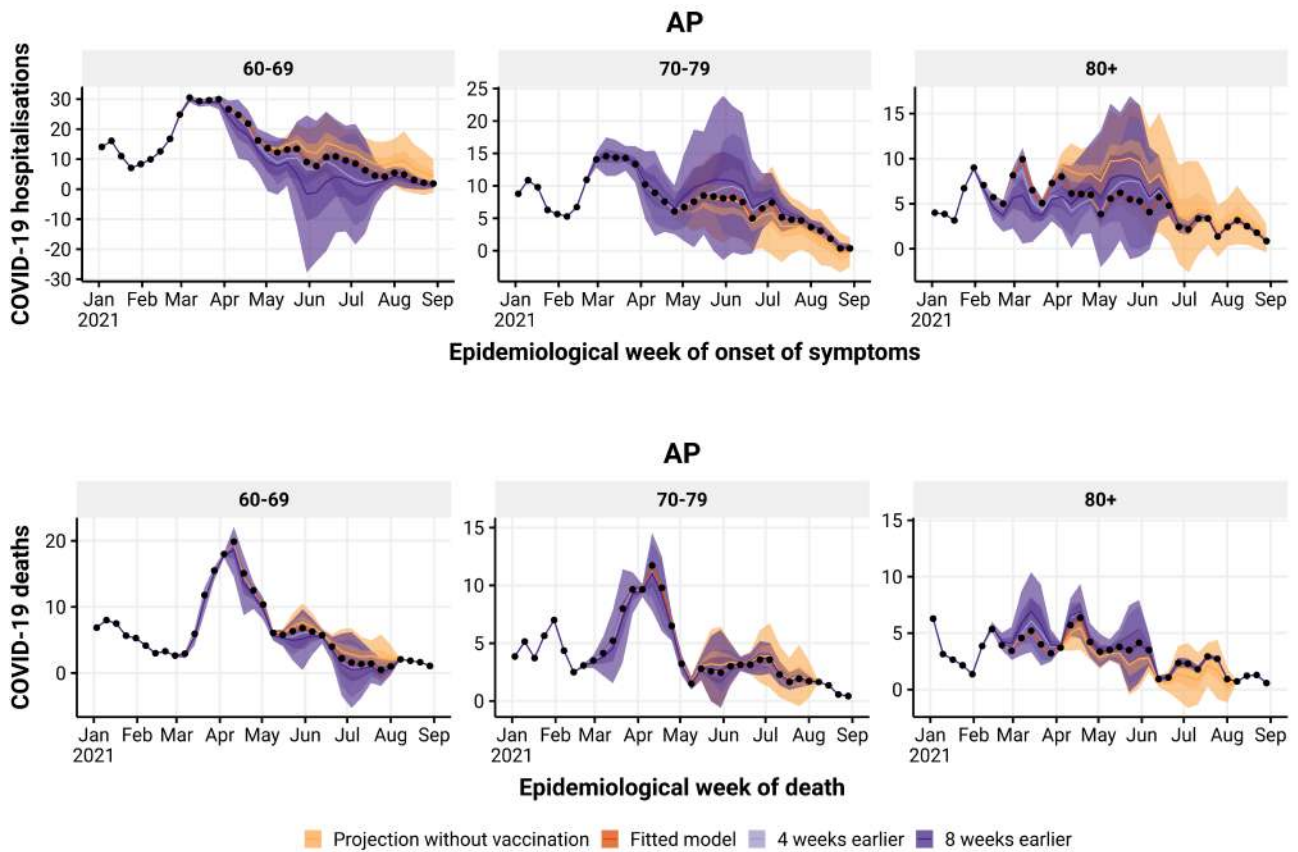


Figure S6: Estimated number of hospitalisations (top) and deaths (bottom) by epidemiological week with the realized (dark orange), no vaccination (light orange), 4 (light purple) and 8 (dark purple) weeks earlier vaccination rollout, by age group (panels), in AP state. The observed number of hospitalisations and deaths are given by the black points.

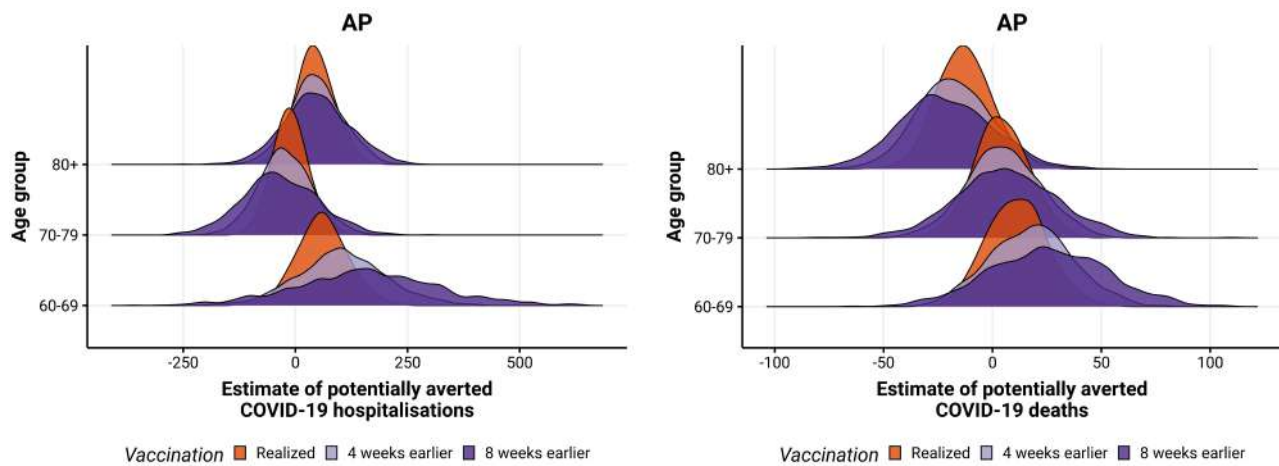


Figure S7: Posterior distribution of hospitalisations (left) and deaths (right) potentially averted by vaccination between 2021-01-01 and 2021-08-29 by age group, with the realized (orange), 4 (light purple) and 8 weeks earlier (dark purple) vaccination rollout in AP state.

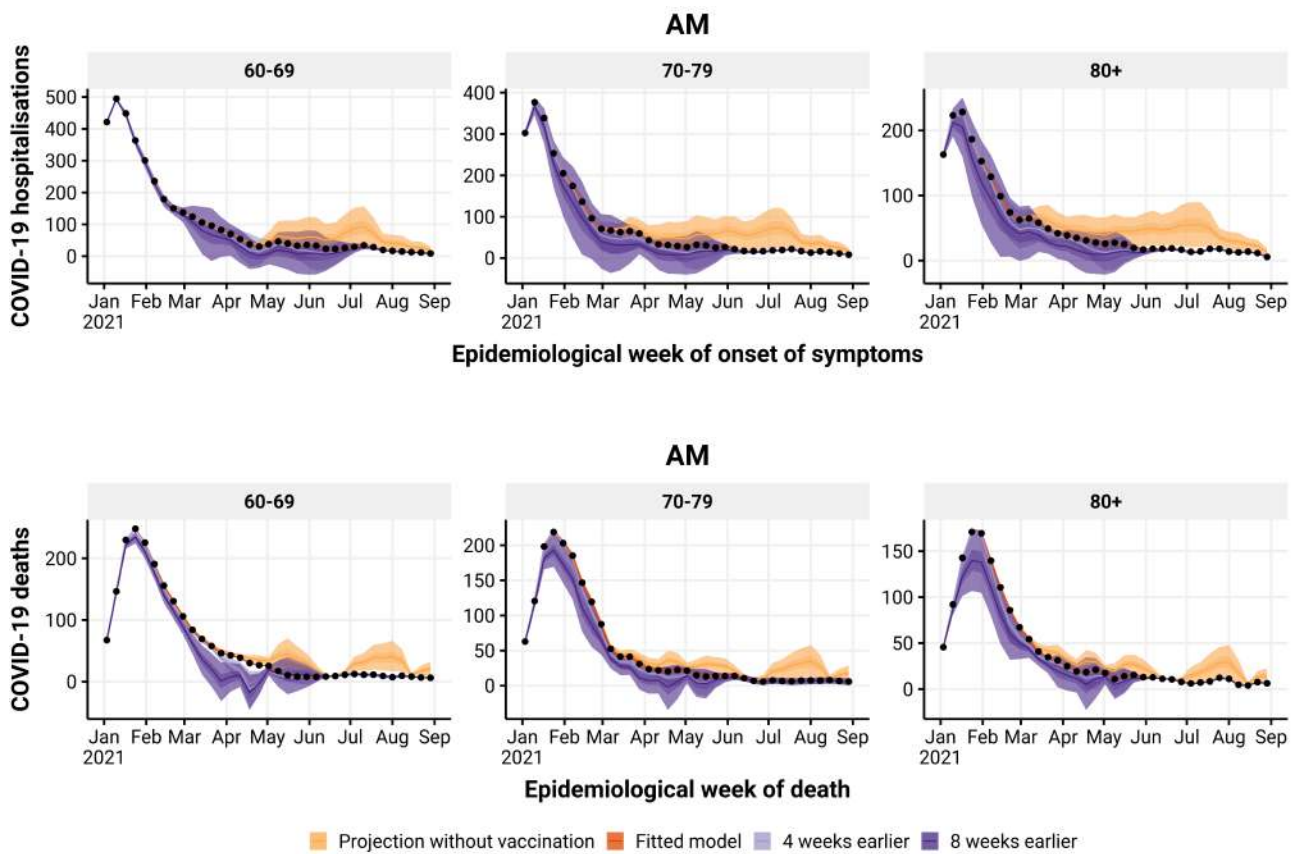


Figure S8: Estimated number of hospitalisations (top) and deaths (bottom) by epidemiological week with the realized (dark orange), no vaccination (light orange), 4 (light purple) and 8 (dark purple) weeks earlier vaccination rollout, by age group (panels), in AM state. The observed number of hospitalisations and deaths are given by the black points.

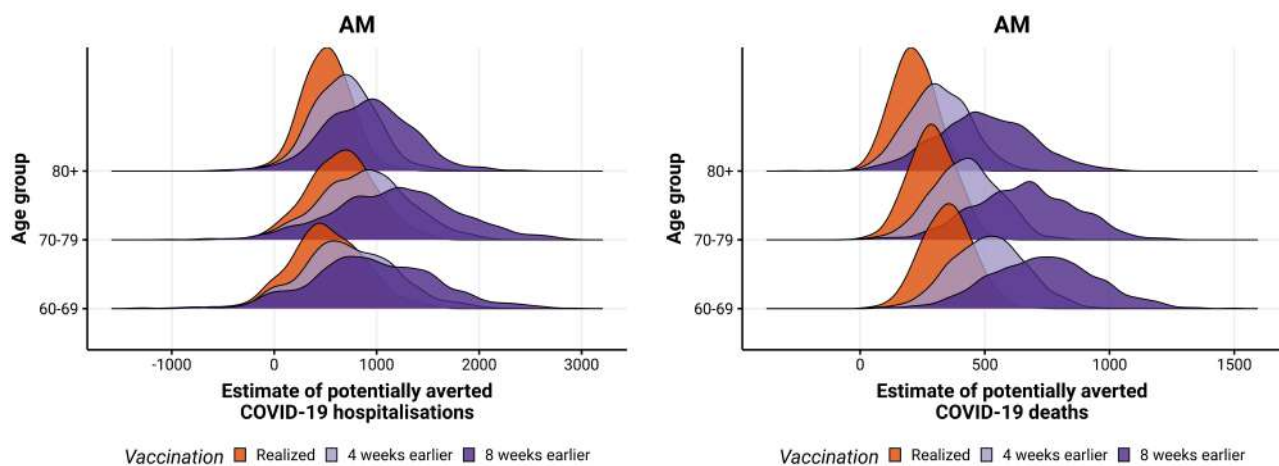


Figure S9: Posterior distribution of hospitalisations (left) and deaths (right) potentially averted by vaccination between 2021-01-01 and 2021-08-29 by age group, with the realized (orange), 4 (light purple) and 8 weeks earlier (dark purple) vaccination rollout in AM state.

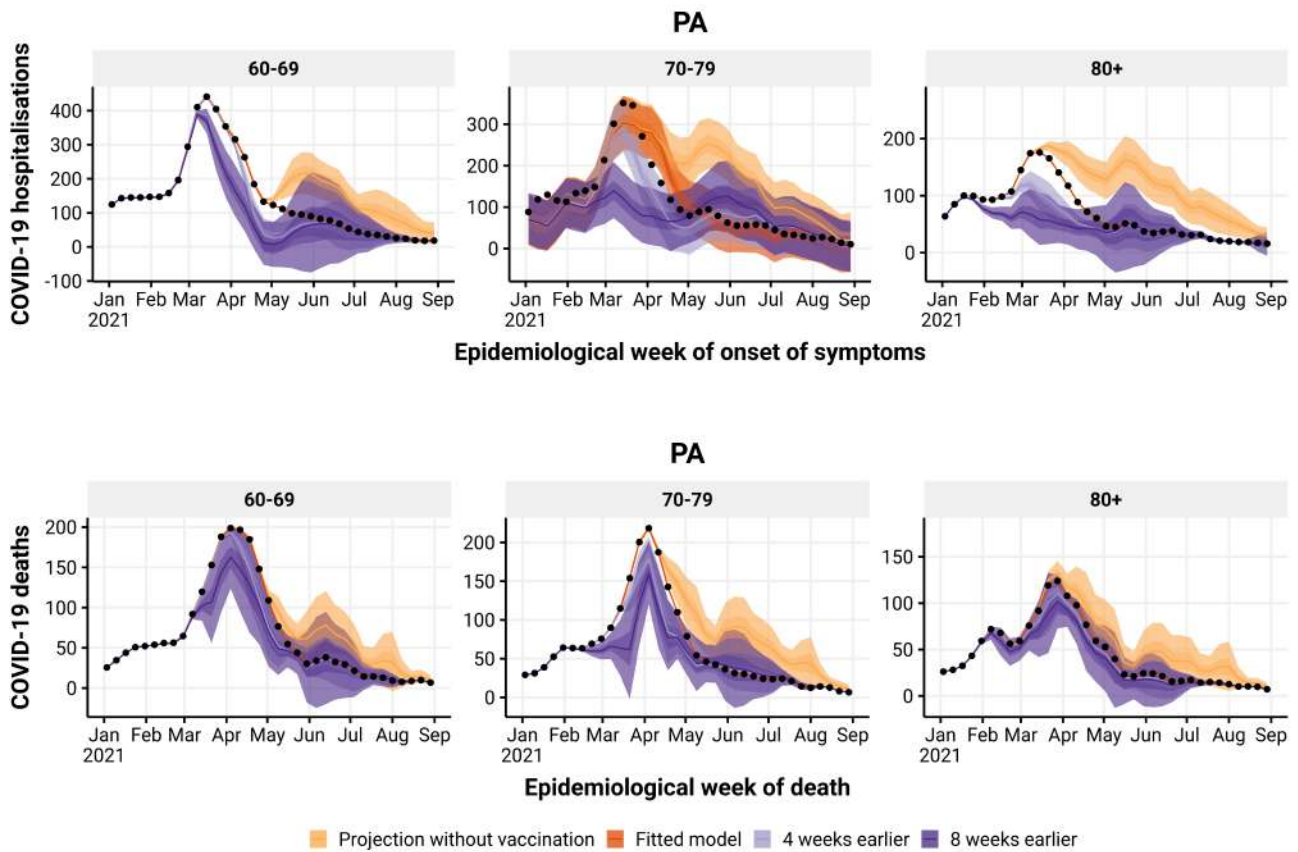


Figure S10: Estimated number of hospitalisations (top) and deaths (bottom) by epidemiological week with the realized (dark orange), no vaccination (light orange), 4 (light purple) and 8 (dark purple) weeks earlier vaccination rollout, by age group (panels), in PA state. The observed number of hospitalisations and deaths are given by the black points.

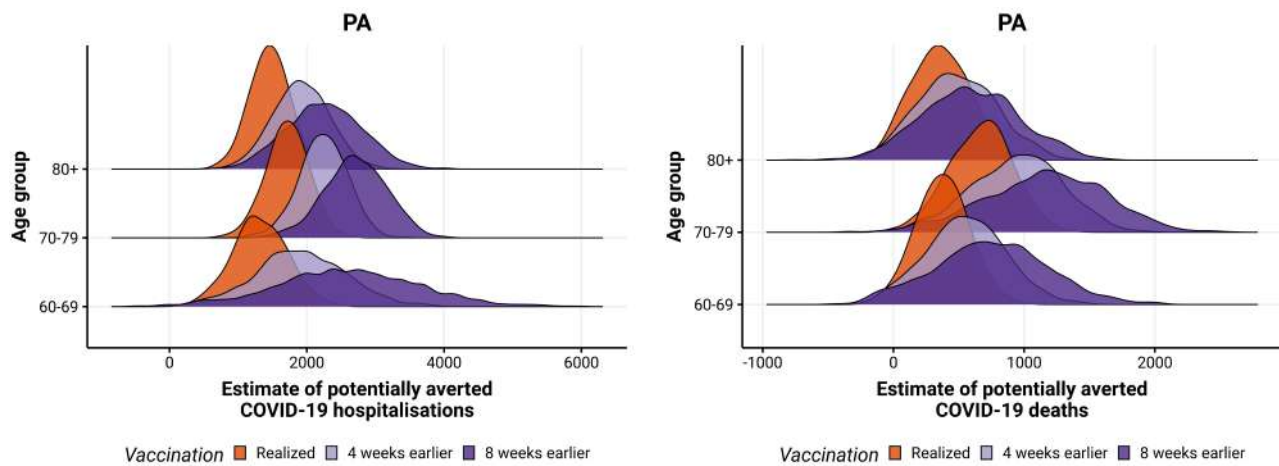


Figure S11: Posterior distribution of hospitalisations (left) and deaths (right) potentially averted by vaccination between 2021-01-01 and 2021-08-29 by age group, with the realized (orange), 4 (light purple) and 8 weeks earlier (dark purple) vaccination rollout in PA state.

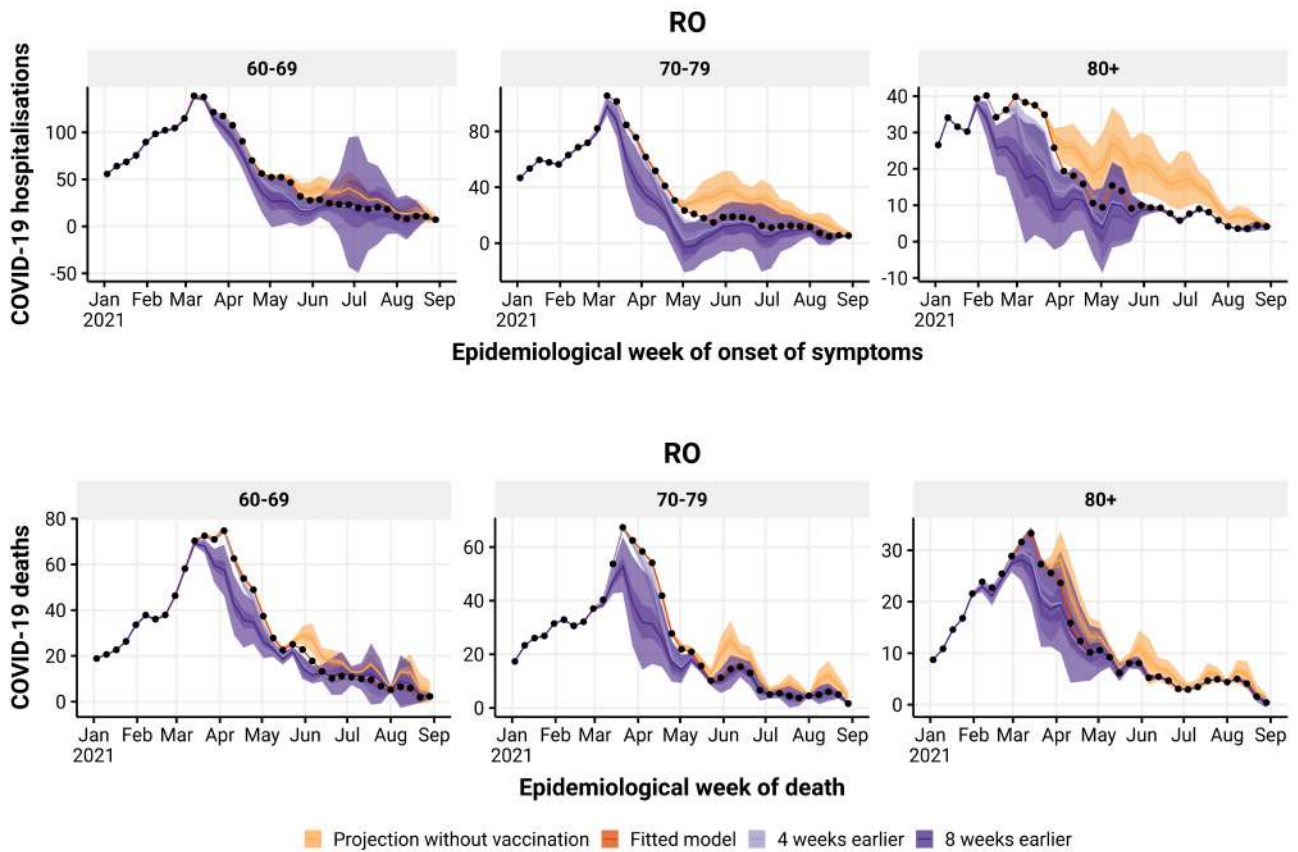


Figure S12: Estimated number of hospitalisations (top) and deaths (bottom) by epidemiological week with the realized (dark orange), no vaccination (light orange), 4 (light purple) and 8 (dark purple) weeks earlier vaccination rollout, by age group (panels), in RO state. The observed number of hospitalisations and deaths are given by the black points.

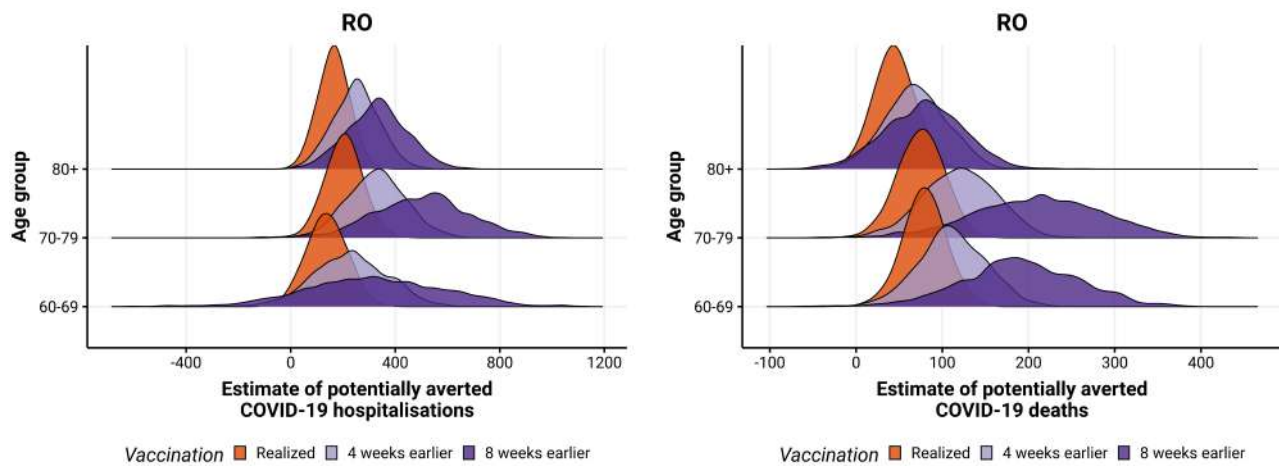


Figure S13: Posterior distribution of hospitalisations (left) and deaths (right) potentially averted by vaccination between 2021-01-01 and 2021-08-29 by age group, with the realized (orange), 4 (light purple) and 8 weeks earlier (dark purple) vaccination rollout in RO state.

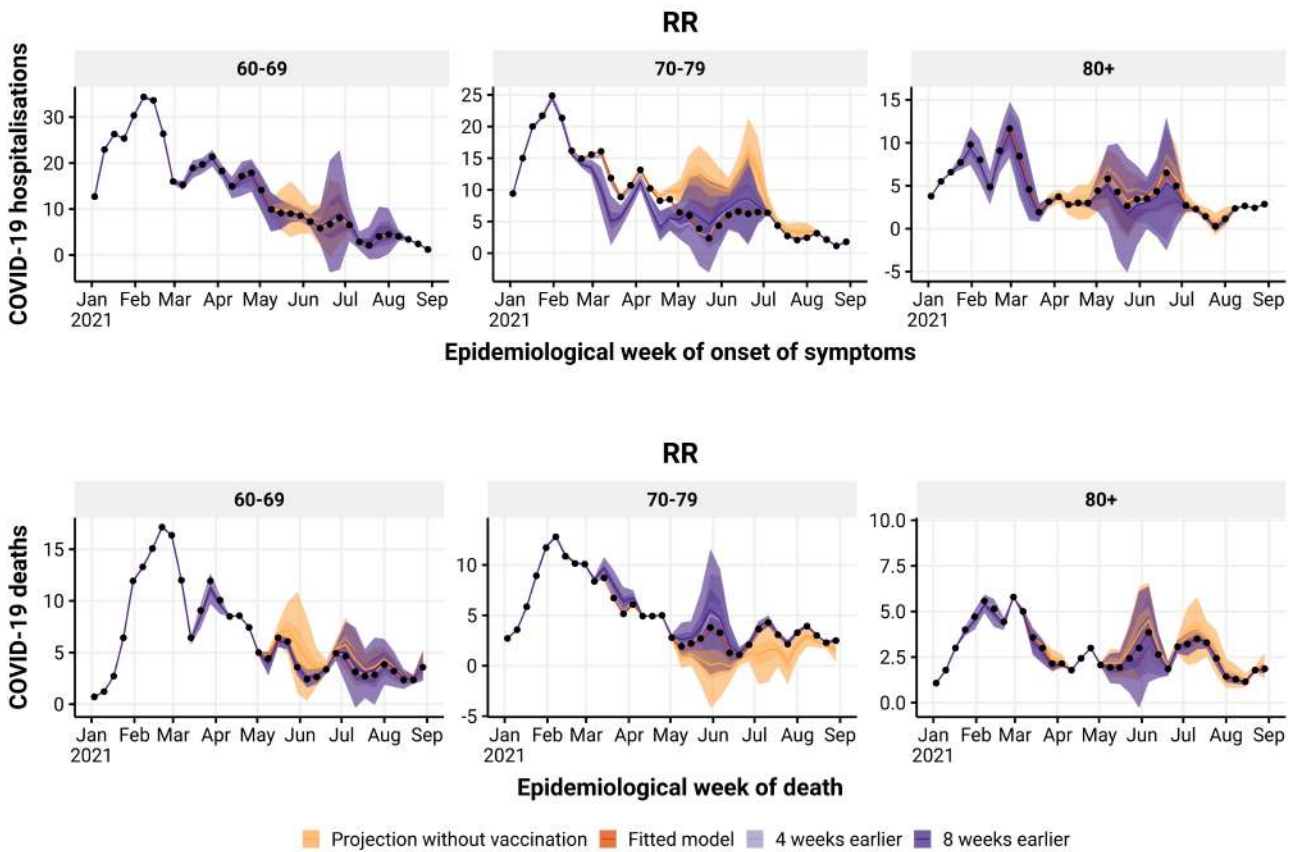


Figure S14: Estimated number of hospitalisations (top) and deaths (bottom) by epidemiological week with the realized (dark orange), no vaccination (light orange), 4 (light purple) and 8 (dark purple) weeks earlier vaccination rollout, by age group (panels), in RR state. The observed number of hospitalisations and deaths are given by the black points.

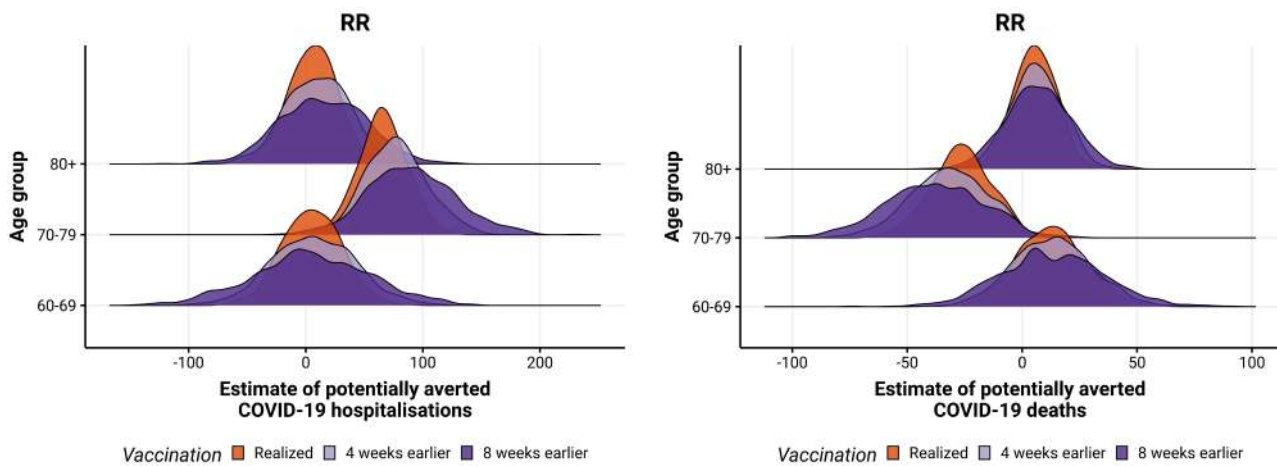


Figure S15: Posterior distribution of hospitalisations (left) and deaths (right) potentially averted by vaccination between 2021-01-01 and 2021-08-29 by age group, with the realized (orange), 4 (light purple) and 8 weeks earlier (dark purple) vaccination rollout in RR state.

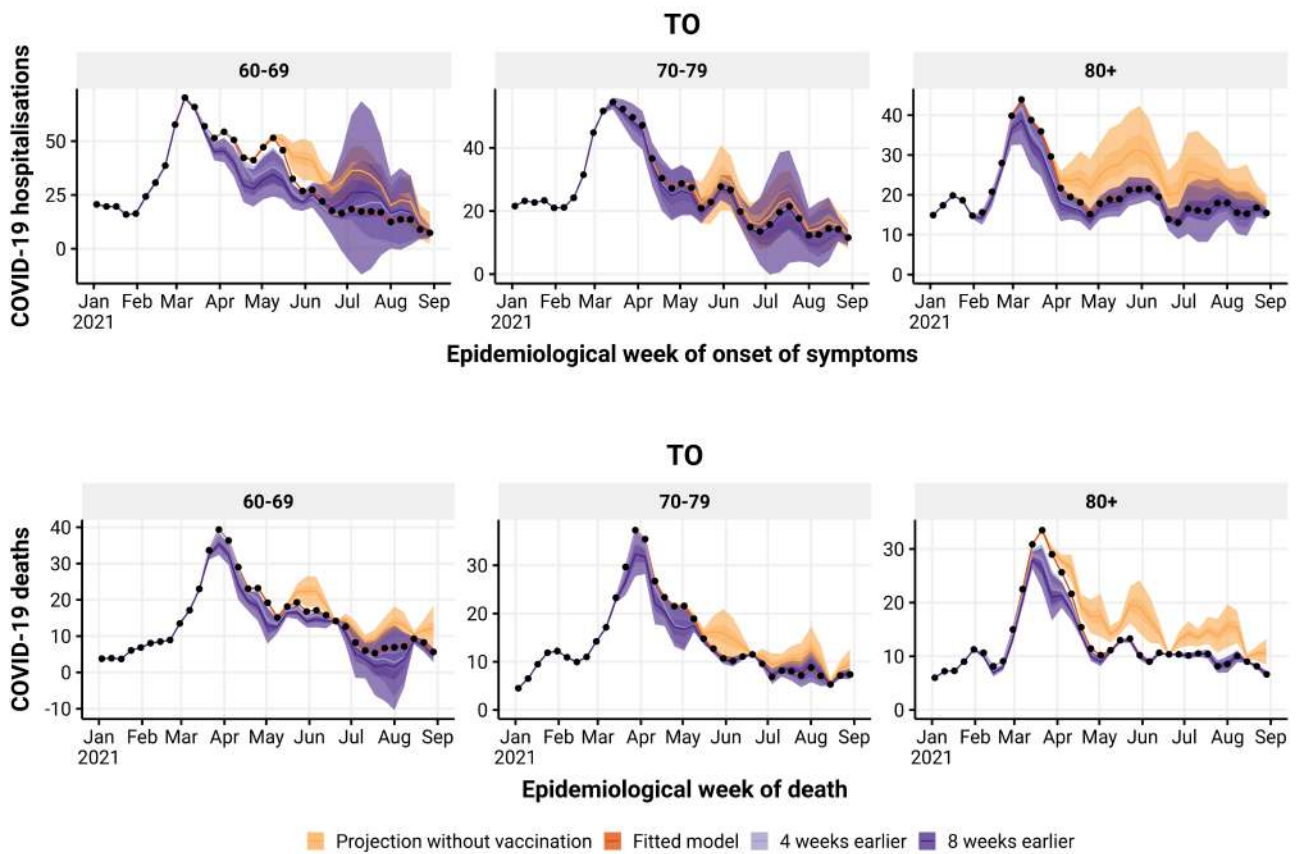


Figure S16: Estimated number of hospitalisations (top) and deaths (bottom) by epidemiological week with the realized (dark orange), no vaccination (light orange), 4 (light purple) and 8 (dark purple) weeks earlier vaccination rollout, by age group (panels), in TO state. The observed number of hospitalisations and deaths are given by the black points.

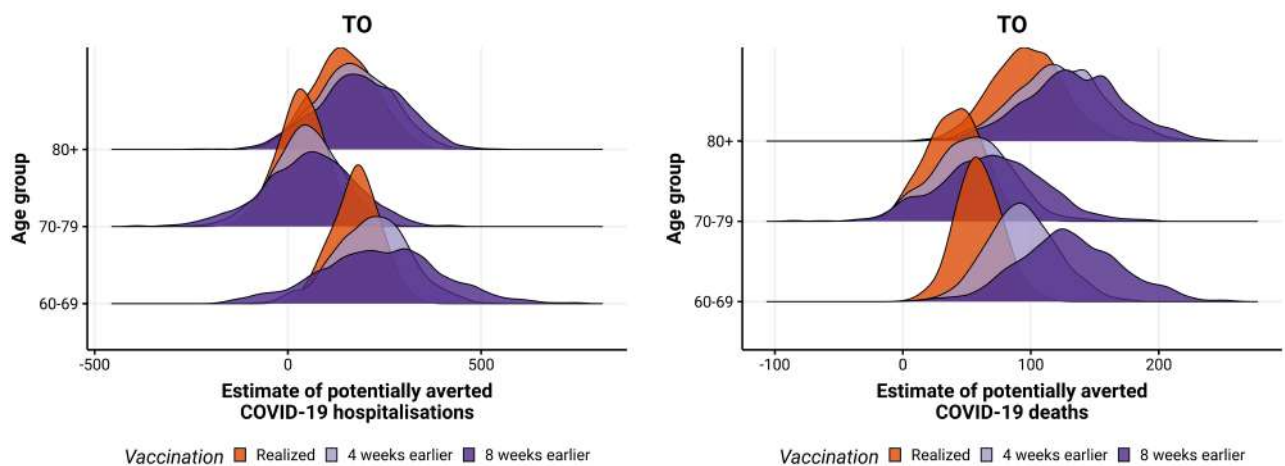


Figure S17: Posterior distribution of hospitalisations (left) and deaths (right) potentially averted by vaccination between 2021-01-01 and 2021-08-29 by age group, with the realized (orange), 4 (light purple) and 8 weeks earlier (dark purple) vaccination rollout in TO state.

1.2 Northeast Region

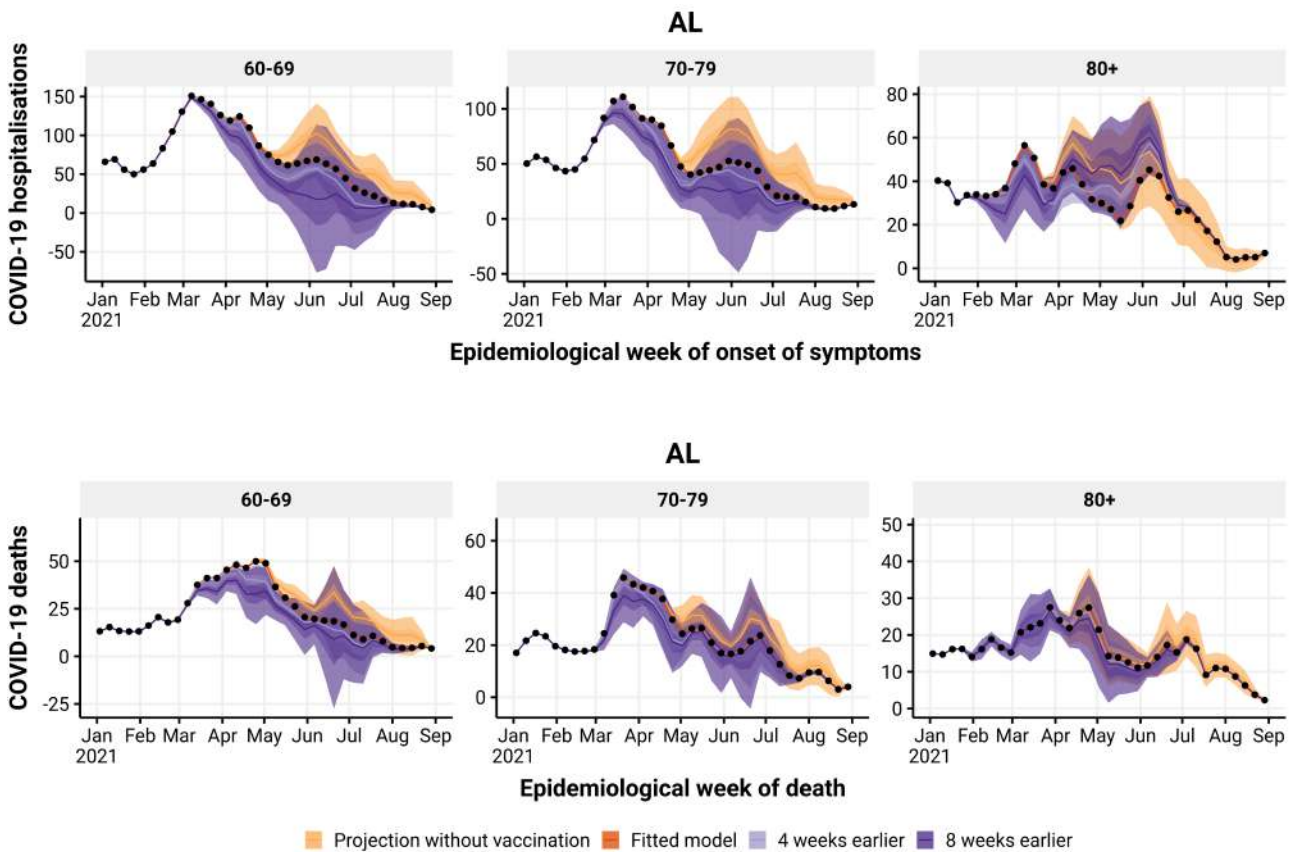


Figure S18: Estimated number of hospitalisations (top) and deaths (bottom) by epidemiological week with the realized (orange), no vaccination (blue), 4 (green) and 8 (yellow) weeks earlier vaccination rollout, by age group (panels), in AL state. The observed number of hospitalisations and deaths are given by the black points.

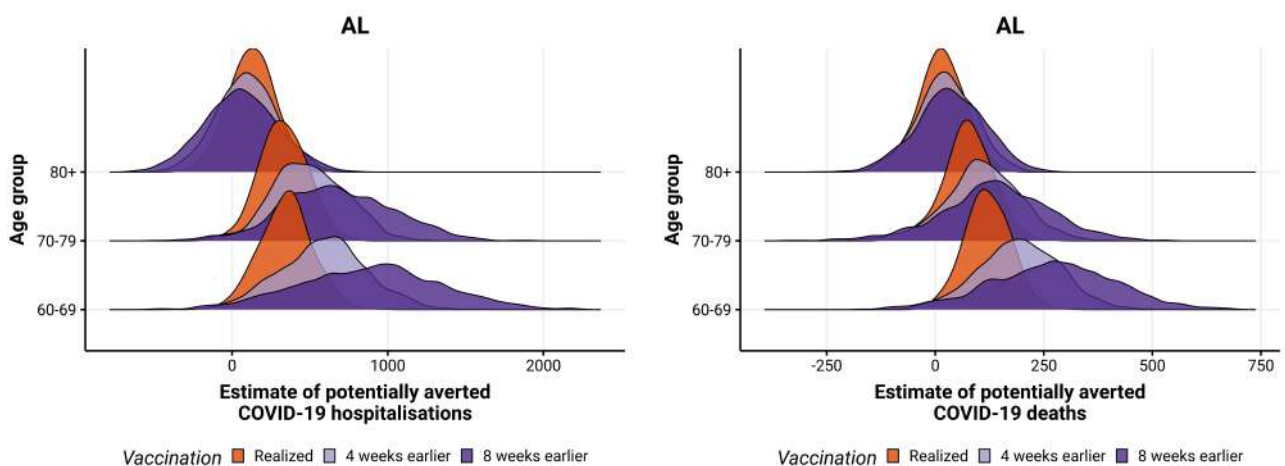


Figure S19: Posterior distribution of hospitalisations (left) and deaths (right) potentially averted by vaccination between 2021-01-01 and 2021-08-29 by age group, with the realized (orange), 4 (blue) and 8 weeks earlier (green) vaccination rollout in AL state.

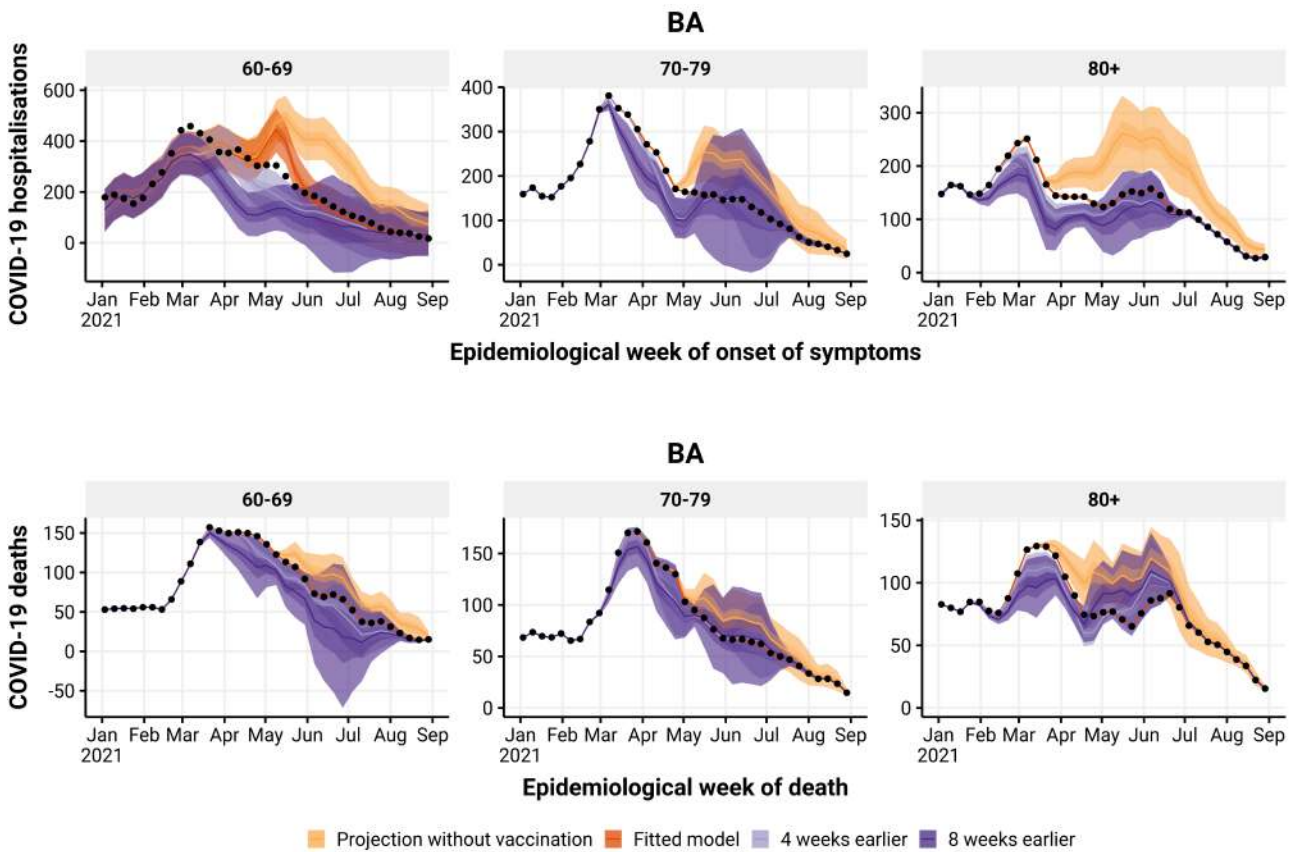


Figure S20: Estimated number of hospitalisations (top) and deaths (bottom) by epidemiological week with the realized (orange), no vaccination (blue), 4 (green) and 8 (yellow) weeks earlier vaccination rollout, by age group (panels), in BA state. The observed number of hospitalisations and deaths are given by the black points.

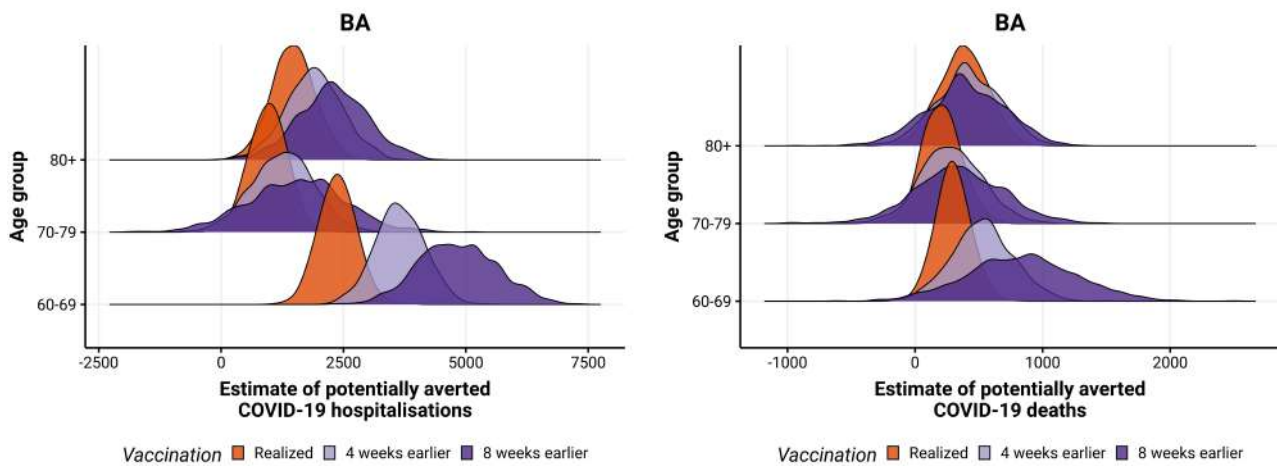


Figure S21: Posterior distribution of hospitalisations (left) and deaths (right) potentially averted by vaccination between 2021-01-01 and 2021-08-29 by age group, with the realized (orange), 4 (blue) and 8 weeks earlier (green) vaccination rollout in BA state.

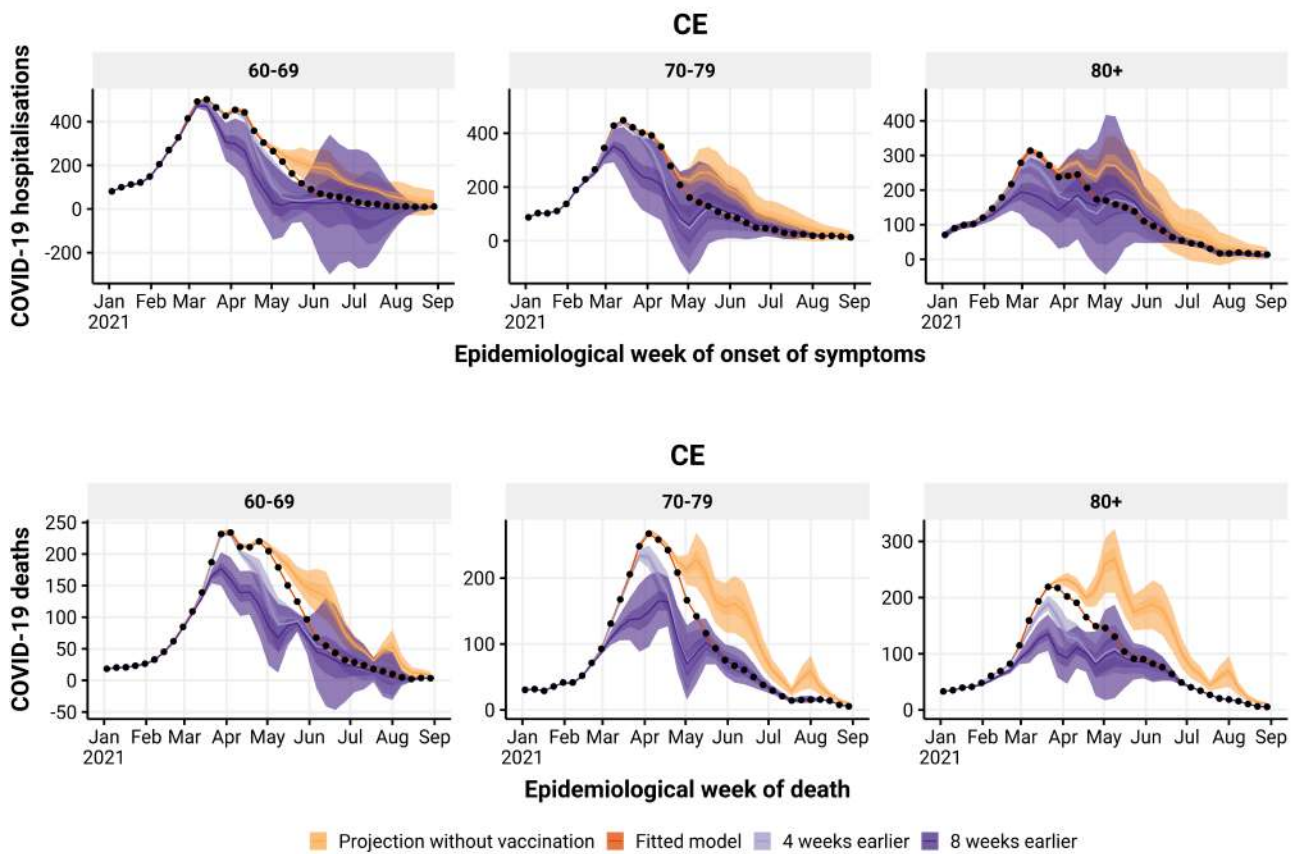


Figure S22: Estimated number of hospitalisations (top) and deaths (bottom) by epidemiological week with the realized (orange), no vaccination (blue), 4 (green) and 8 (yellow) weeks earlier vaccination rollout, by age group (panels), in CE state. The observed number of hospitalisations and deaths are given by the black points.

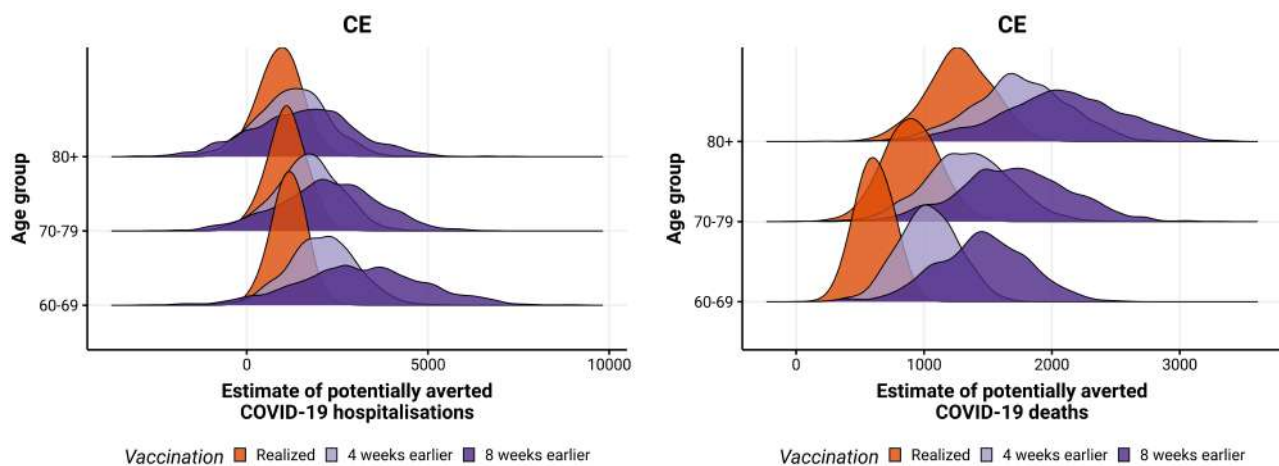


Figure S23: Posterior distribution of hospitalisations (left) and deaths (right) potentially averted by vaccination between 2021-01-01 and 2021-08-29 by age group, with the realized (orange), 4 (blue) and 8 weeks earlier (green) vaccination rollout in CE state.

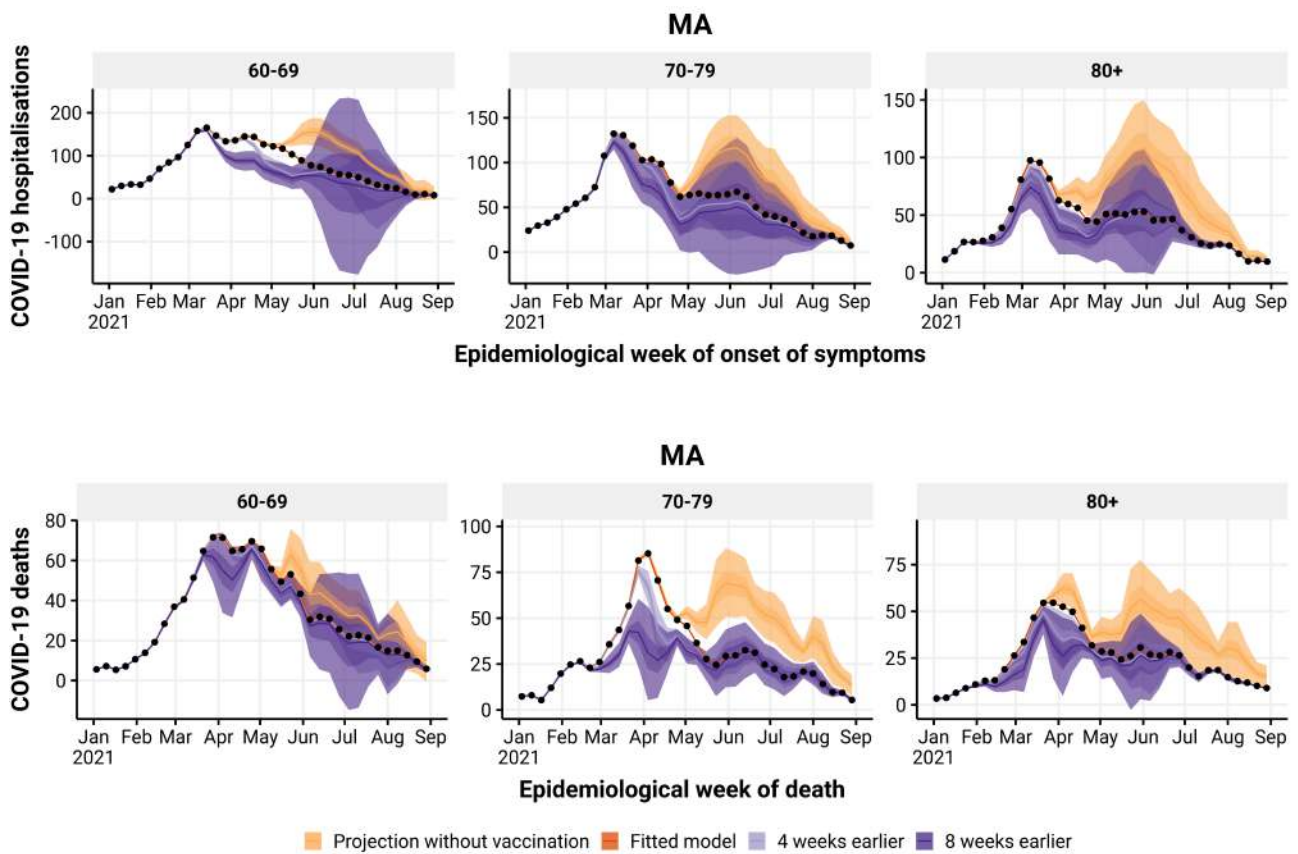


Figure S24: Estimated number of hospitalisations (top) and deaths (bottom) by epidemiological week with the realized (orange), no vaccination (blue), 4 (green) and 8 (yellow) weeks earlier vaccination rollout, by age group (panels), in MA state. The observed number of hospitalisations and deaths are given by the black points.

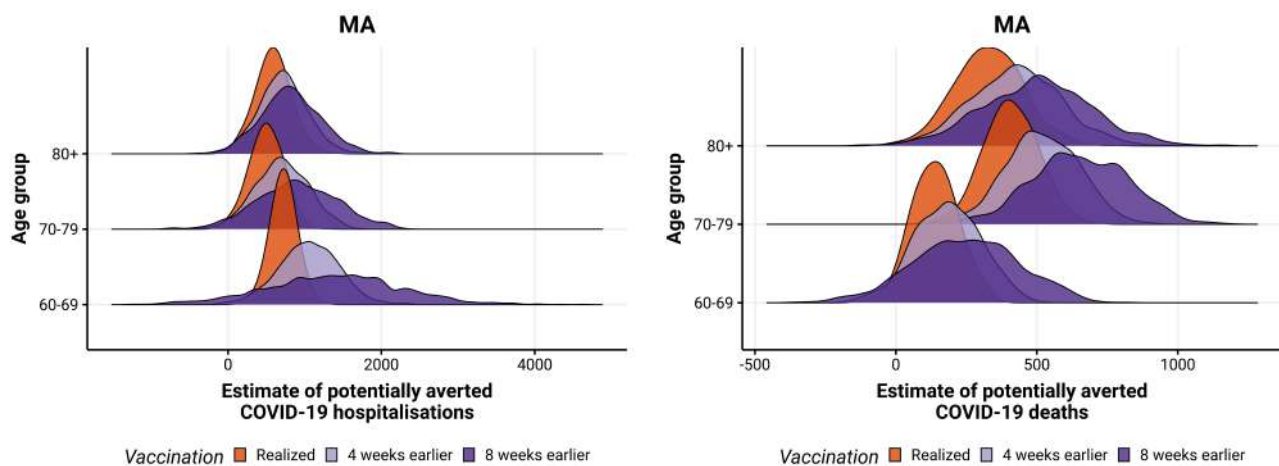


Figure S25: Posterior distribution of hospitalisations (left) and deaths (right) potentially averted by vaccination between 2021-01-01 and 2021-08-29 by age group, with the realized (orange), 4 (blue) and 8 weeks earlier (green) vaccination rollout in MA state.

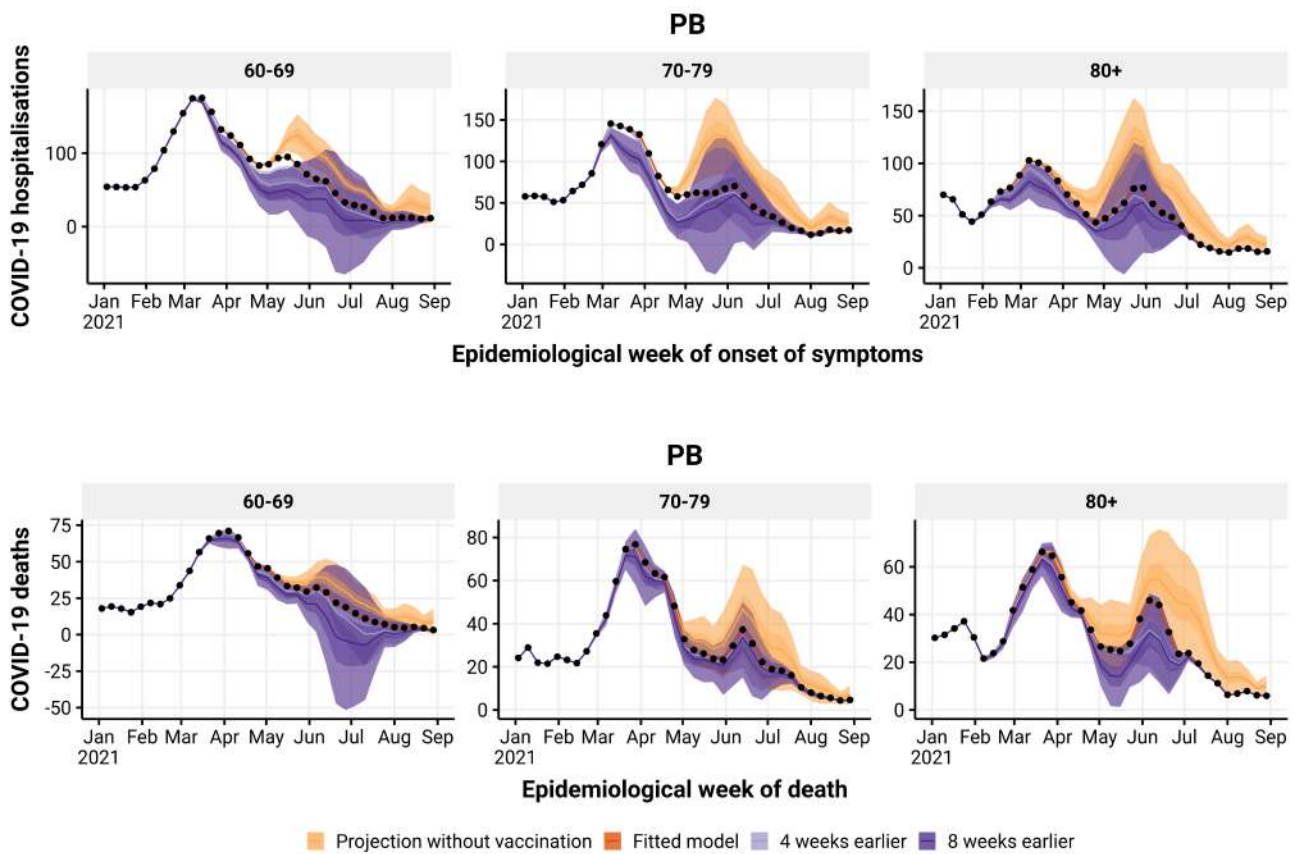


Figure S26: Estimated number of hospitalisations (top) and deaths (bottom) by epidemiological week with the realized (orange), no vaccination (blue), 4 (green) and 8 (yellow) weeks earlier vaccination rollout, by age group (panels), in PB state. The observed number of hospitalisations and deaths are given by the black points.

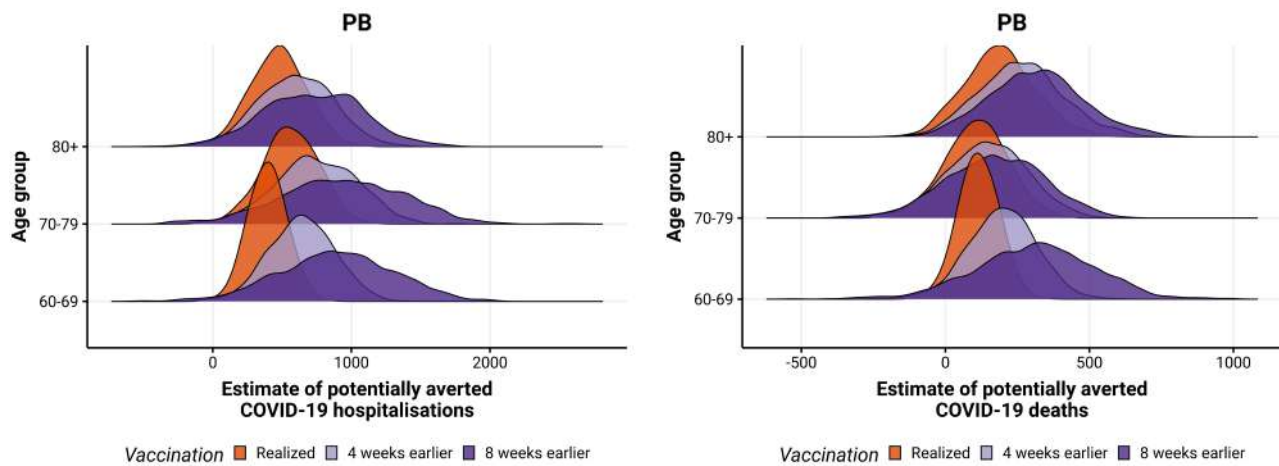


Figure S27: Posterior distribution of hospitalisations (left) and deaths (right) potentially averted by vaccination between 2021-01-01 and 2021-08-29 by age group, with the realized (orange), 4 (blue) and 8 weeks earlier (green) vaccination rollout in PB state.

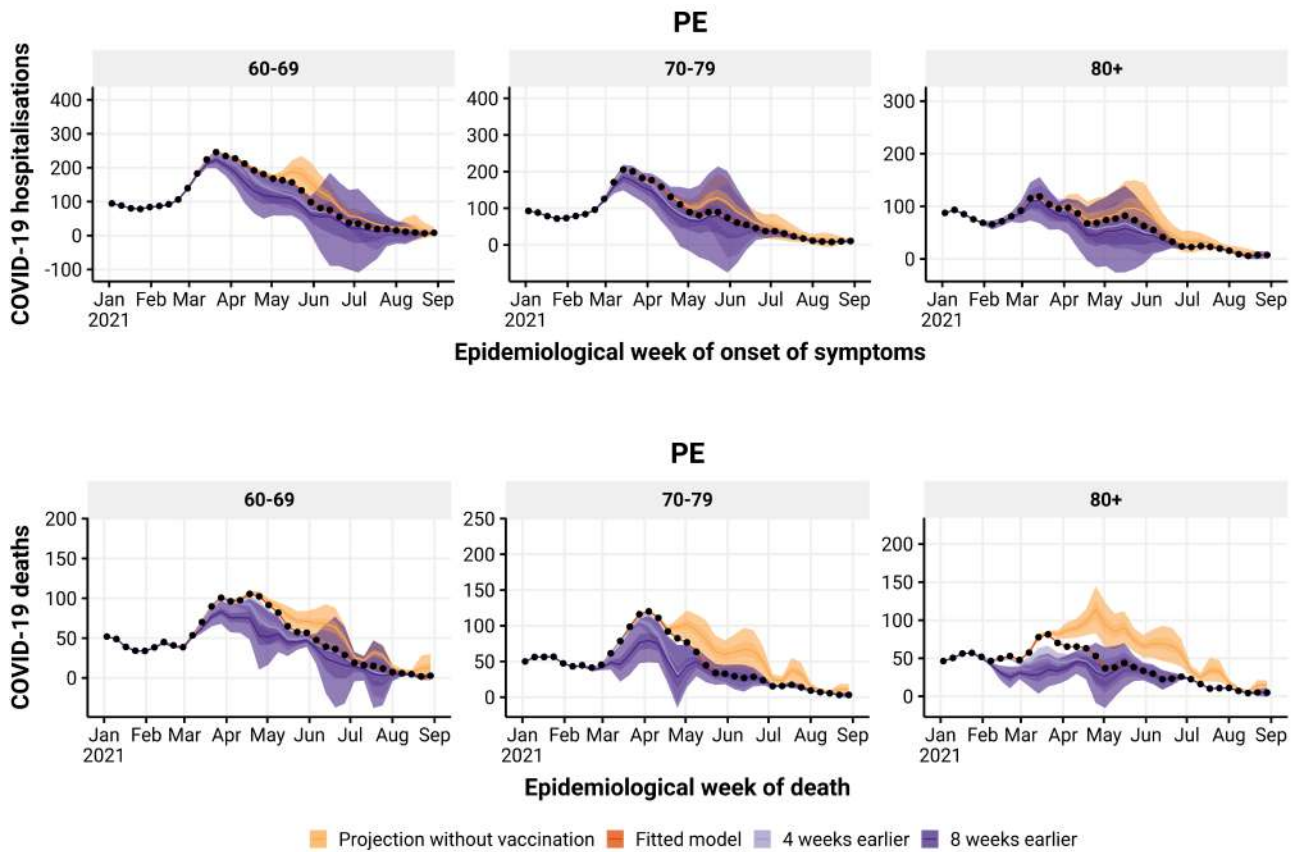


Figure S28: Estimated number of hospitalisations (top) and deaths (bottom) by epidemiological week with the realized (orange), no vaccination (blue), 4 (green) and 8 (yellow) weeks earlier vaccination rollout, by age group (panels), in PE state. The observed number of hospitalisations and deaths are given by the black points.

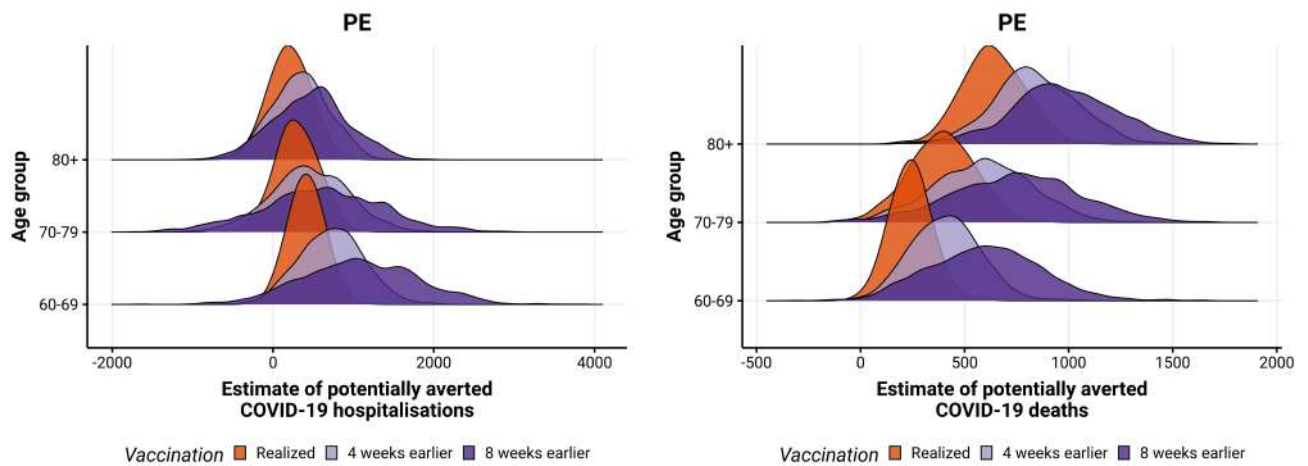


Figure S29: Posterior distribution of hospitalisations (left) and deaths (right) potentially averted by vaccination between 2021-01-01 and 2021-08-29 by age group, with the realized (orange), 4 (blue) and 8 weeks earlier (green) vaccination rollout in PE state.

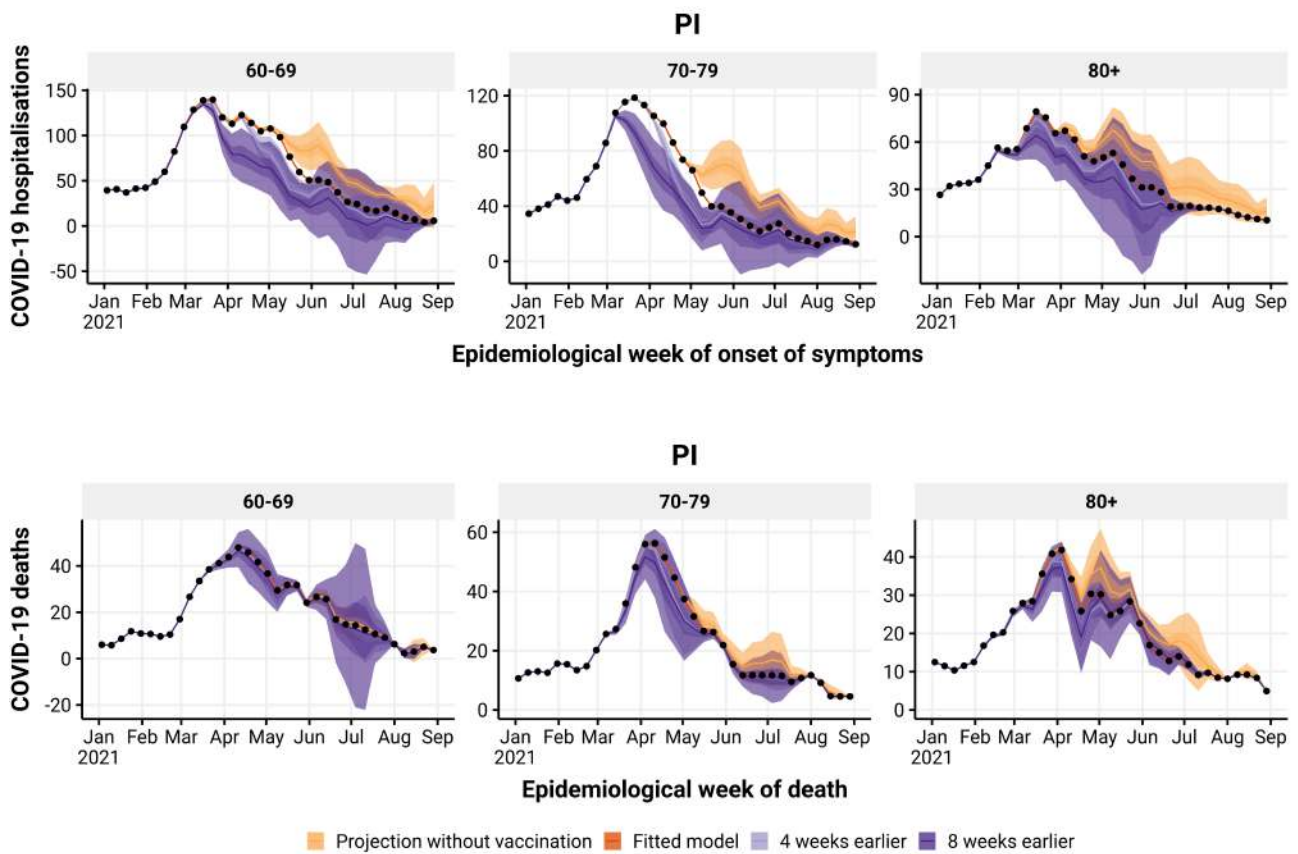


Figure S30: Estimated number of hospitalisations (top) and deaths (bottom) by epidemiological week with the realized (orange), no vaccination (blue), 4 (green) and 8 (yellow) weeks earlier vaccination rollout, by age group (panels), in PI state. The observed number of hospitalisations and deaths are given by the black points.

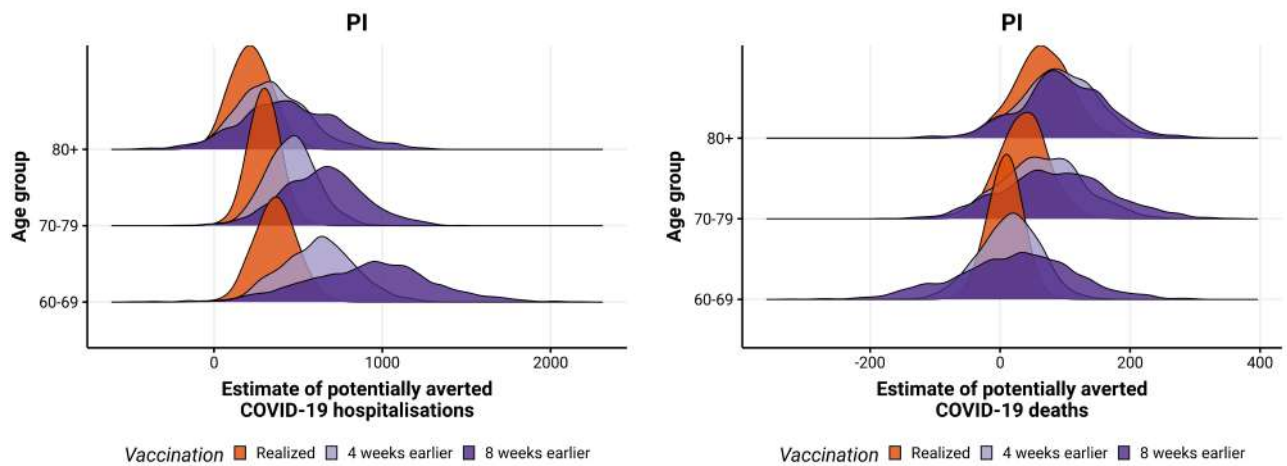


Figure S31: Posterior distribution of hospitalisations (left) and deaths (right) potentially averted by vaccination between 2021-01-01 and 2021-08-29 by age group, with the realized (orange), 4 (blue) and 8 weeks earlier (green) vaccination rollout in PI state.

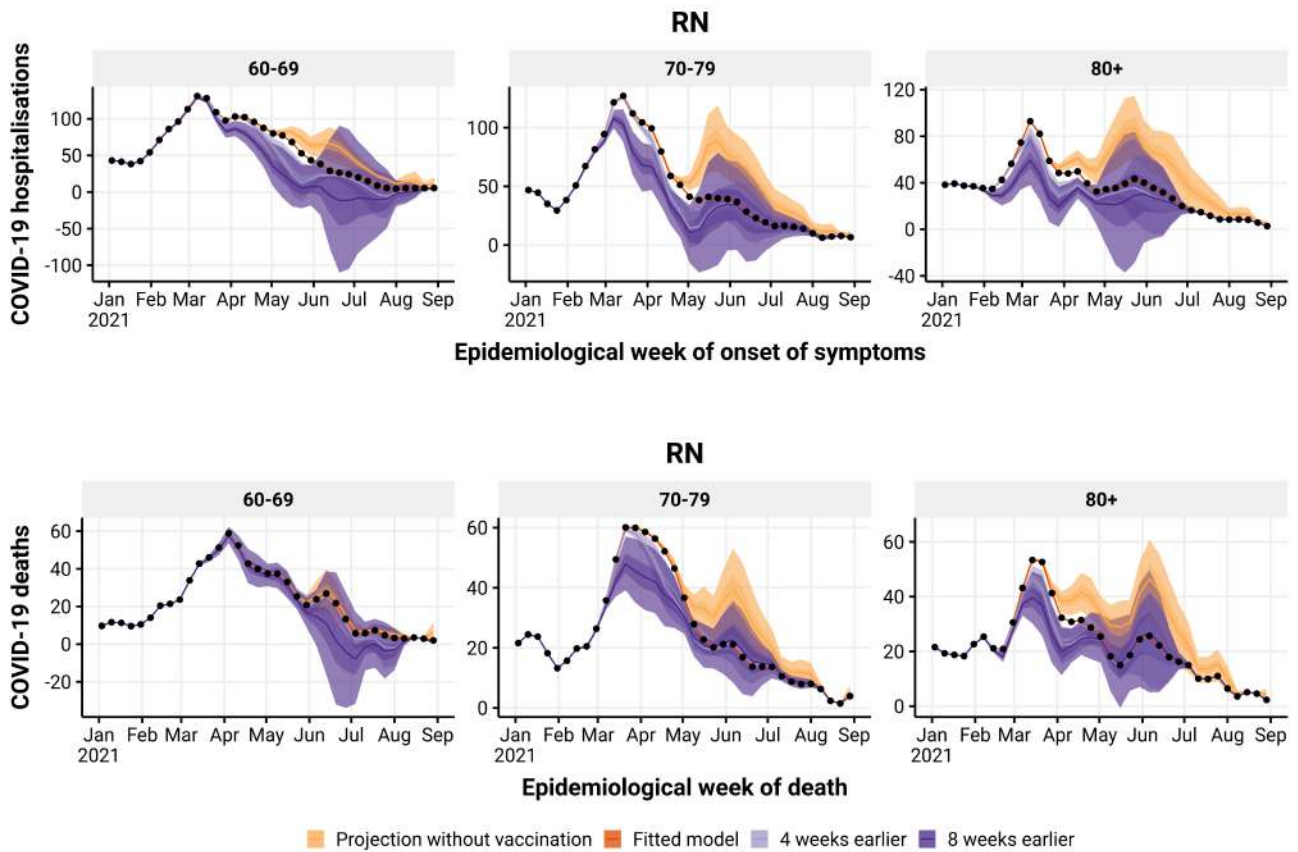


Figure S32: Estimated number of hospitalisations (top) and deaths (bottom) by epidemiological week with the realized (orange), no vaccination (blue), 4 (green) and 8 (yellow) weeks earlier vaccination rollout, by age group (panels), in RN state. The observed number of hospitalisations and deaths are given by the black points.

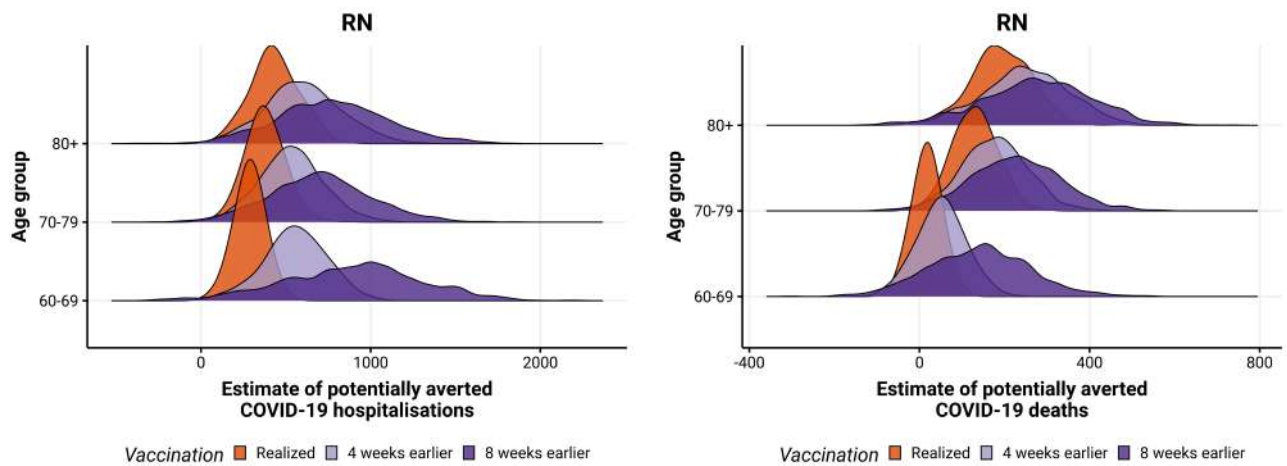


Figure S33: Posterior distribution of hospitalisations (left) and deaths (right) potentially averted by vaccination between 2021-01-01 and 2021-08-29 by age group, with the realized (orange), 4 (blue) and 8 weeks earlier (green) vaccination rollout in RN state.

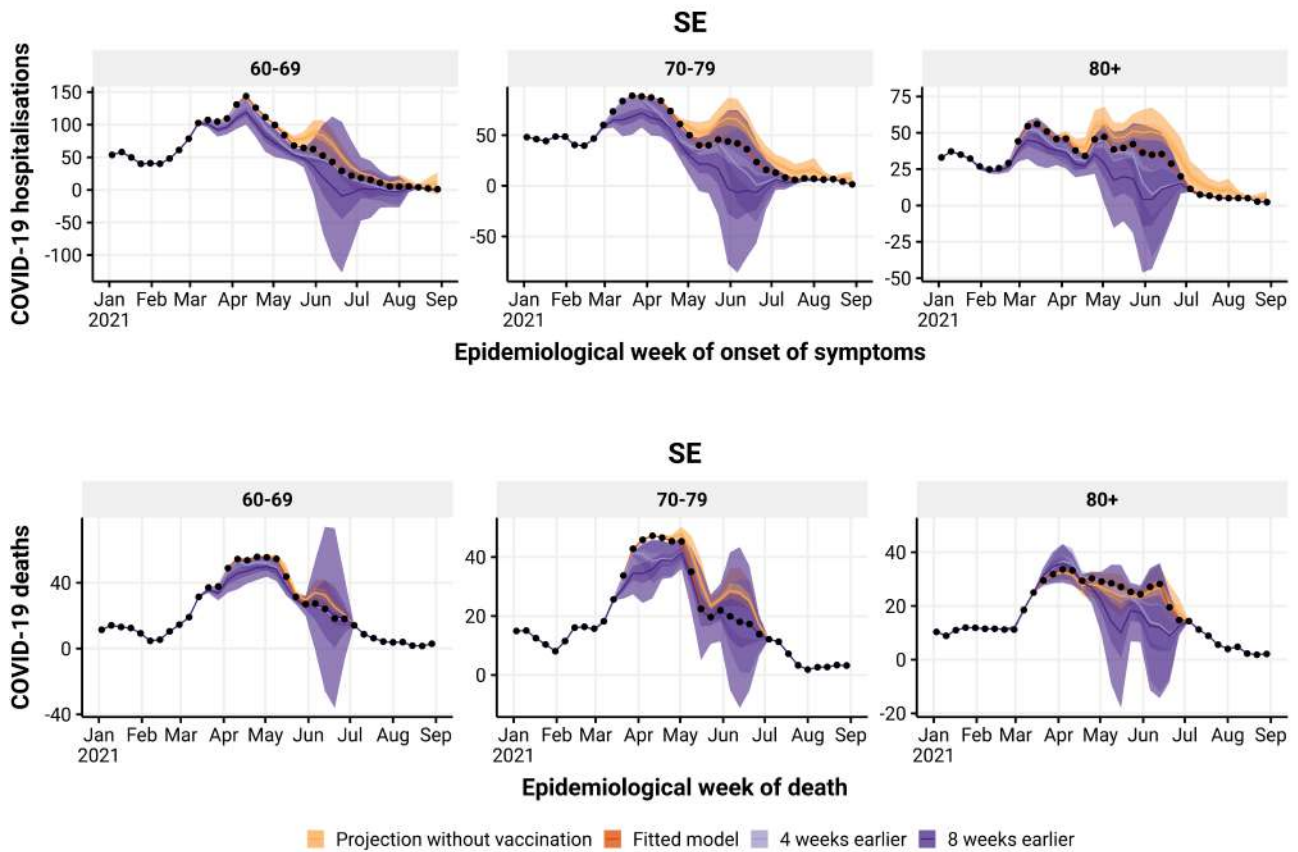


Figure S34: Estimated number of hospitalisations (top) and deaths (bottom) by epidemiological week with the realized (orange), no vaccination (blue), 4 (green) and 8 (yellow) weeks earlier vaccination rollout, by age group (panels), in SE state. The observed number of hospitalisations and deaths are given by the black points.

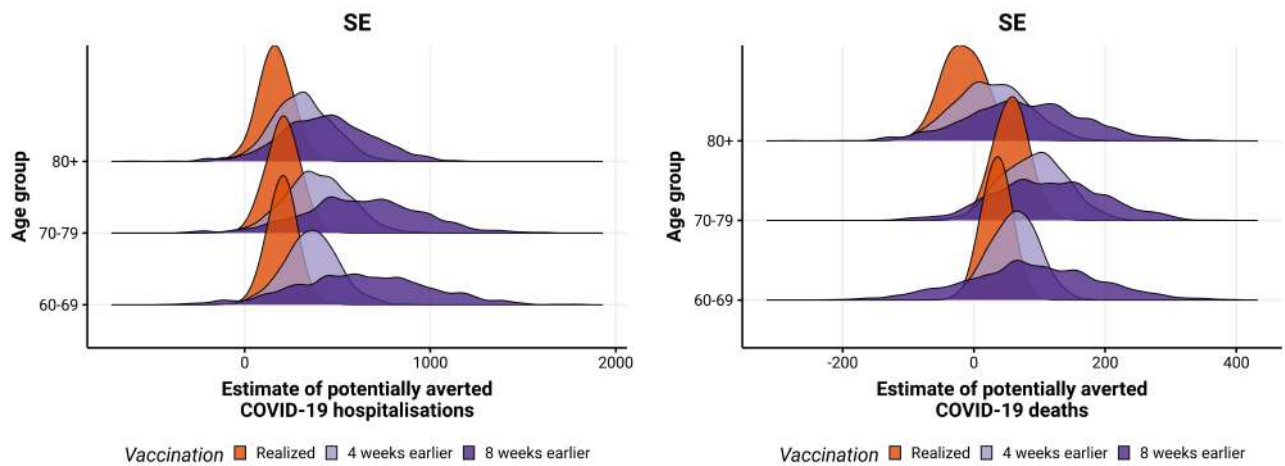


Figure S35: Posterior distribution of hospitalisations (left) and deaths (right) potentially averted by vaccination between 2021-01-01 and 2021-08-29 by age group, with the realized (orange), 4 (blue) and 8 weeks earlier (green) vaccination rollout in SE state.

1.3 Southeast Region

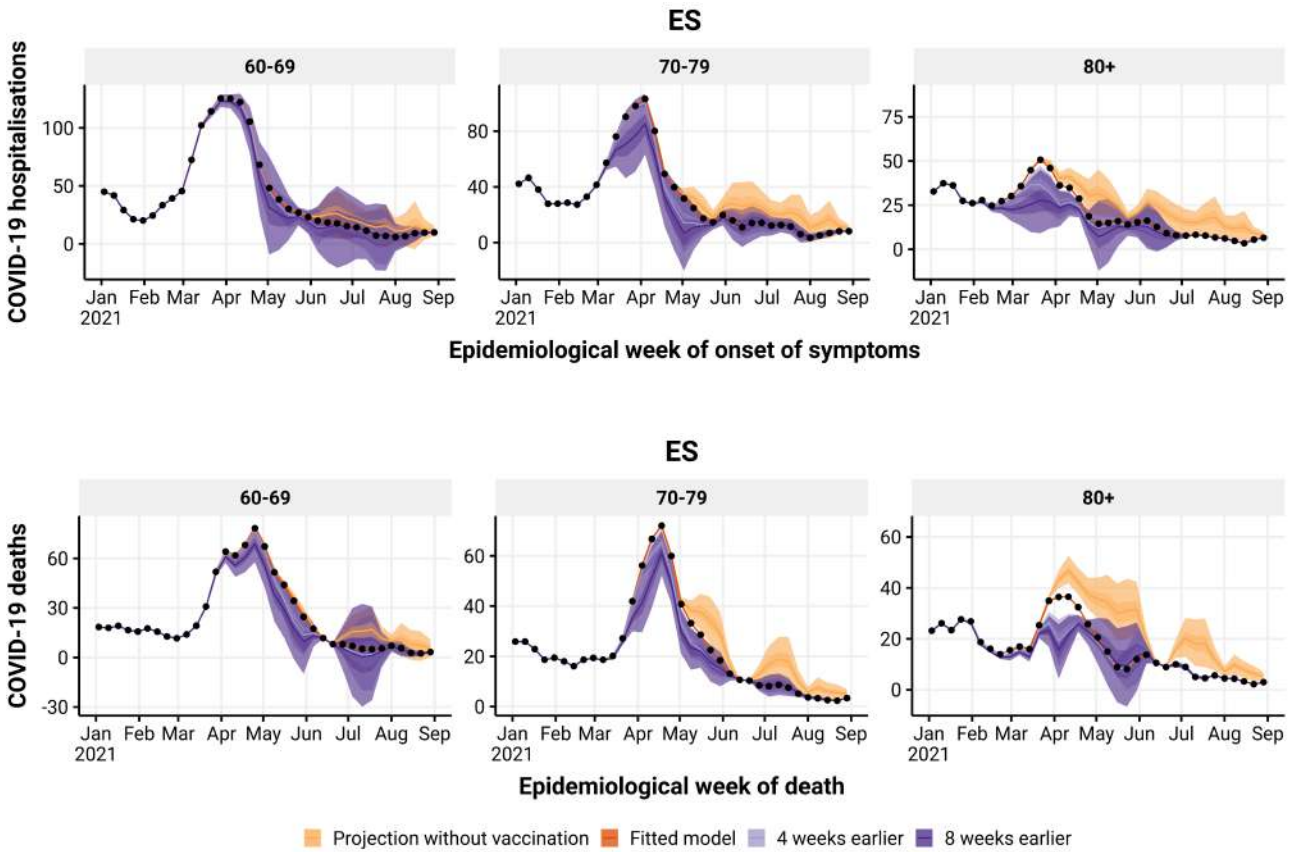


Figure S36: Estimated number of hospitalisations (top) and deaths (bottom) by epidemiological week with the realized (orange), no vaccination (blue), 4 (green) and 8 (yellow) weeks earlier vaccination rollout, by age group (panels), in ES state. The observed number of hospitalisations and deaths are given by the black points.

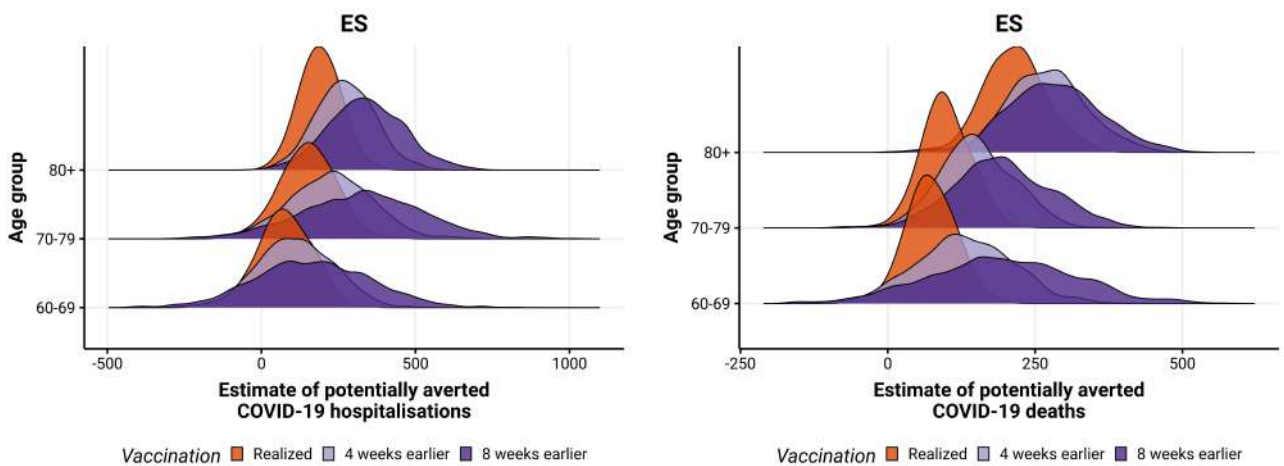


Figure S37: Posterior distribution of hospitalisations (left) and deaths (right) potentially averted by vaccination between 2021-01-01 and 2021-08-29 by age group, with the realized (orange), 4 (blue) and 8 weeks earlier (green) vaccination rollout in ES state.

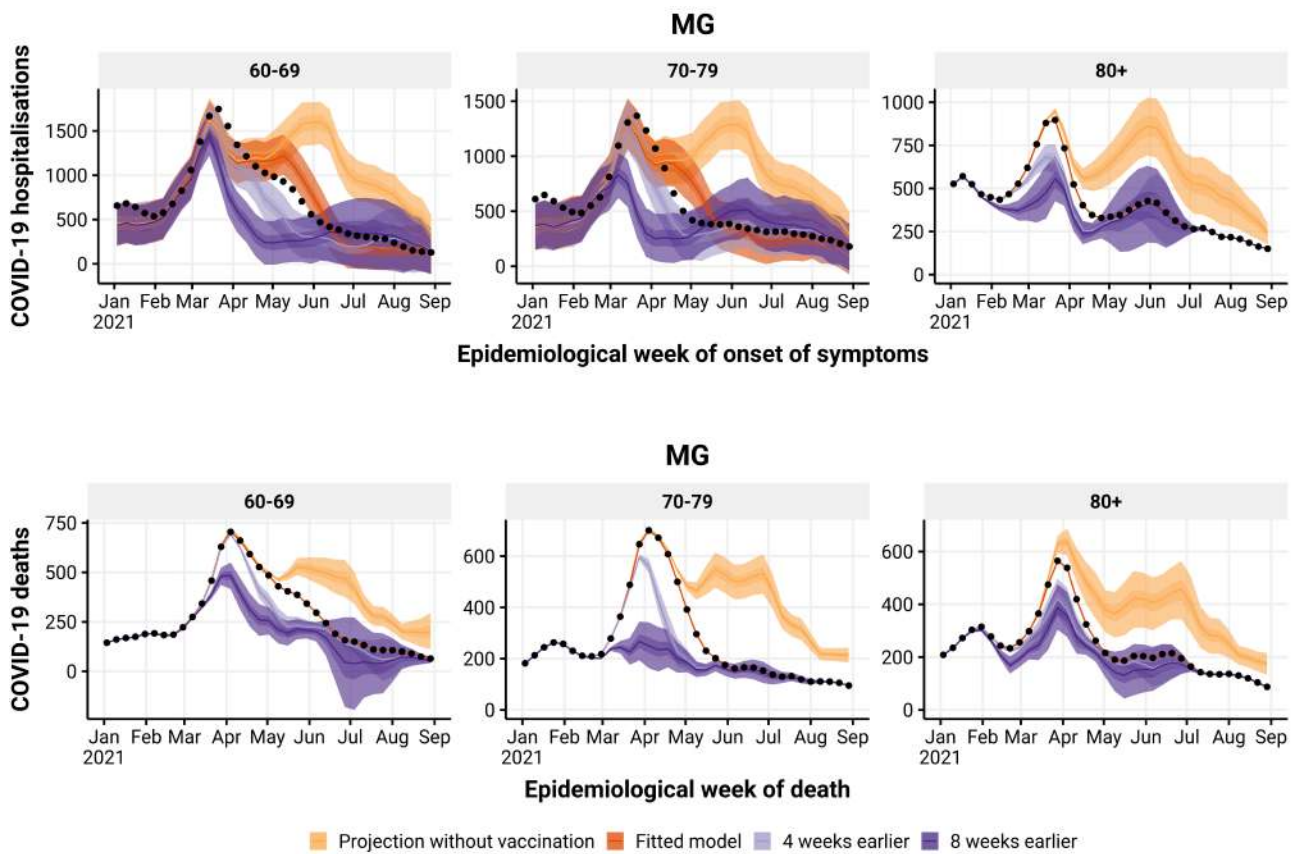


Figure S38: Estimated number of hospitalisations (top) and deaths (bottom) by epidemiological week with the realized (orange), no vaccination (blue), 4 (green) and 8 (yellow) weeks earlier vaccination rollout, by age group (panels), in MG state. The observed number of hospitalisations and deaths are given by the black points.

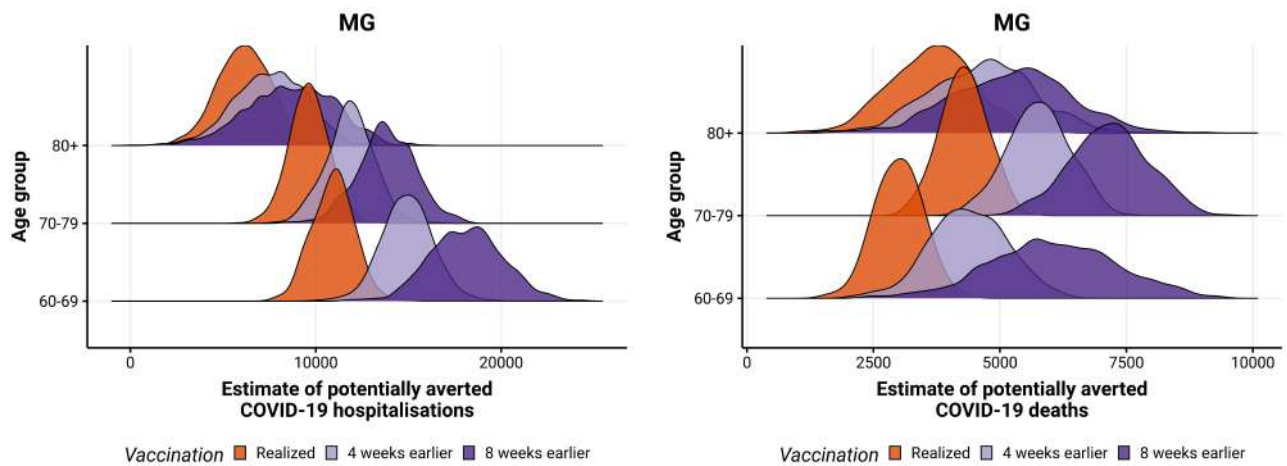


Figure S39: Posterior distribution of hospitalisations (left) and deaths (right) potentially averted by vaccination between 2021-01-01 and 2021-08-29 by age group, with the realized (orange), 4 (blue) and 8 weeks earlier (green) vaccination rollout in MG state.

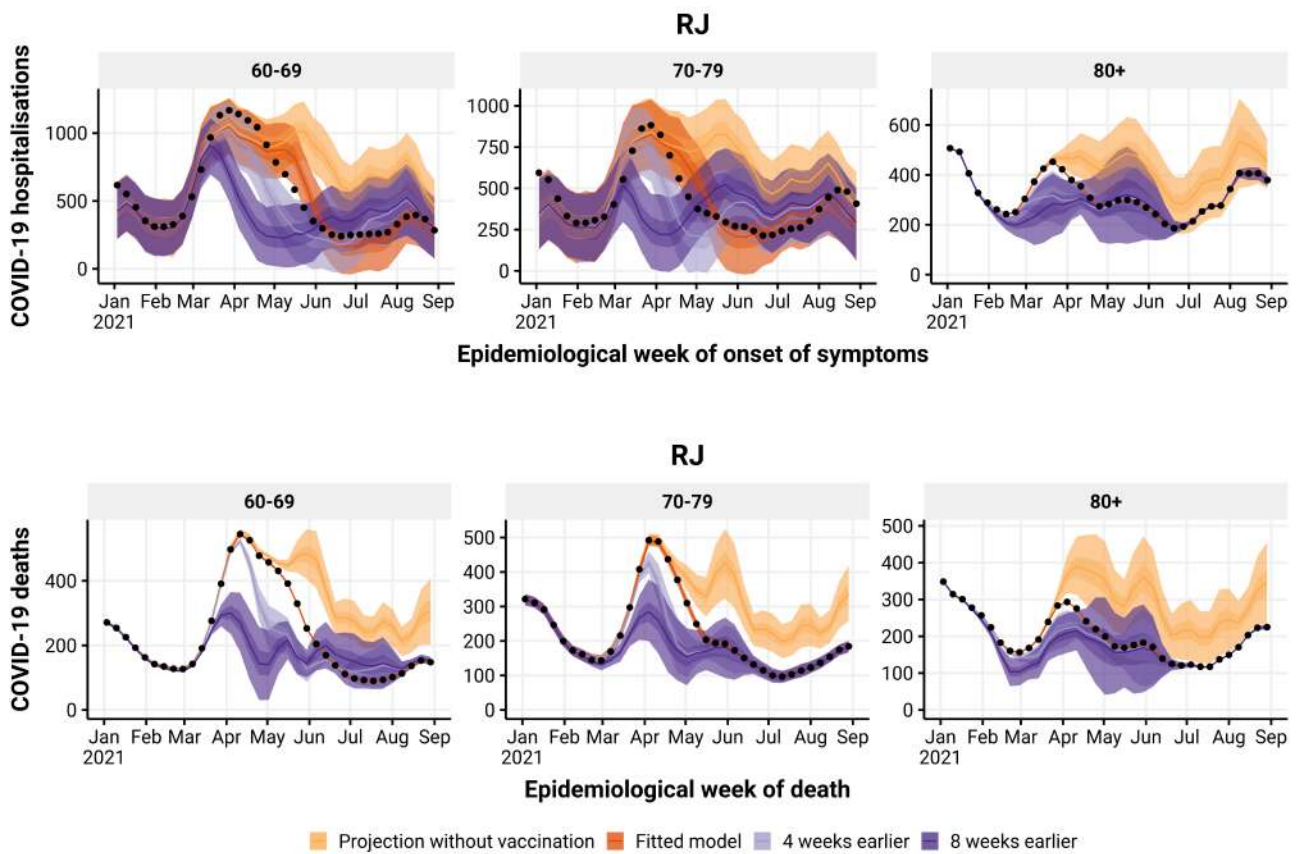


Figure S40: Estimated number of hospitalisations (top) and deaths (bottom) by epidemiological week with the realized (orange), no vaccination (blue), 4 (green) and 8 (yellow) weeks earlier vaccination rollout, by age group (panels), in RJ state. The observed number of hospitalisations and deaths are given by the black points.

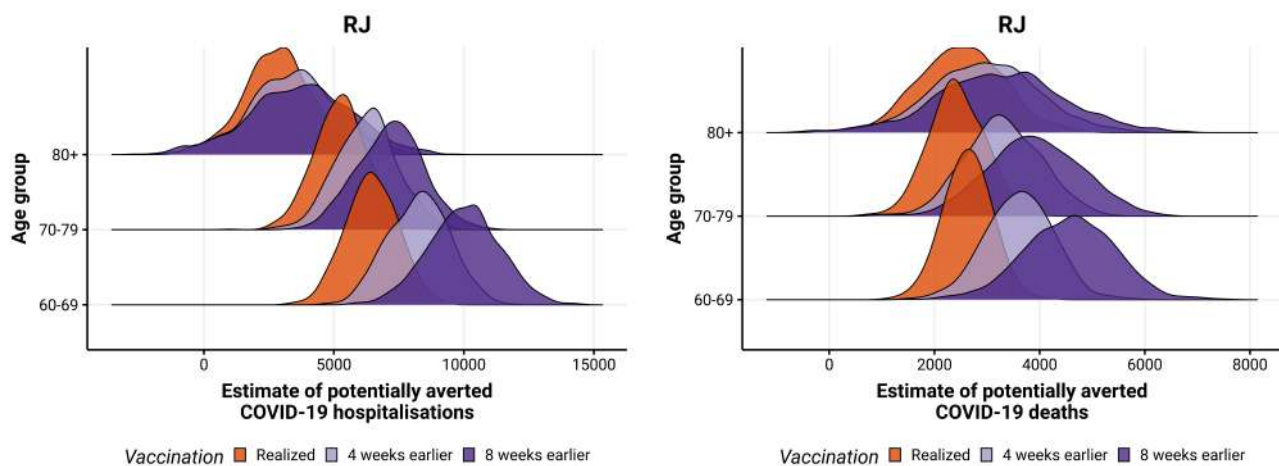


Figure S41: Posterior distribution of hospitalisations (left) and deaths (right) potentially averted by vaccination between 2021-01-01 and 2021-08-29 by age group, with the realized (orange), 4 (blue) and 8 weeks earlier (green) vaccination rollout in RJ state.

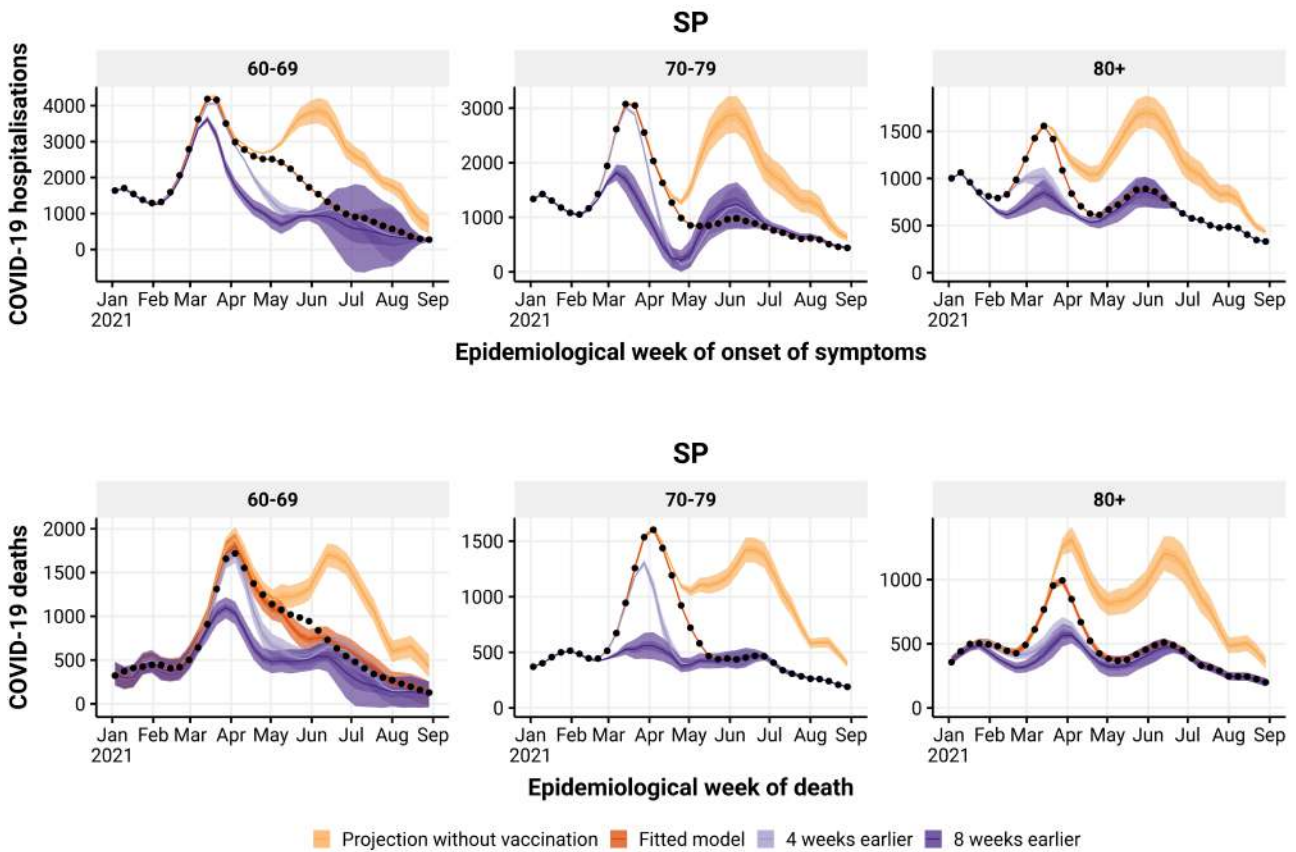


Figure S42: Estimated number of hospitalisations (top) and deaths (bottom) by epidemiological week with the realized (orange), no vaccination (blue), 4 (green) and 8 (yellow) weeks earlier vaccination rollout, by age group (panels), in SP state. The observed number of hospitalisations and deaths are given by the black points.

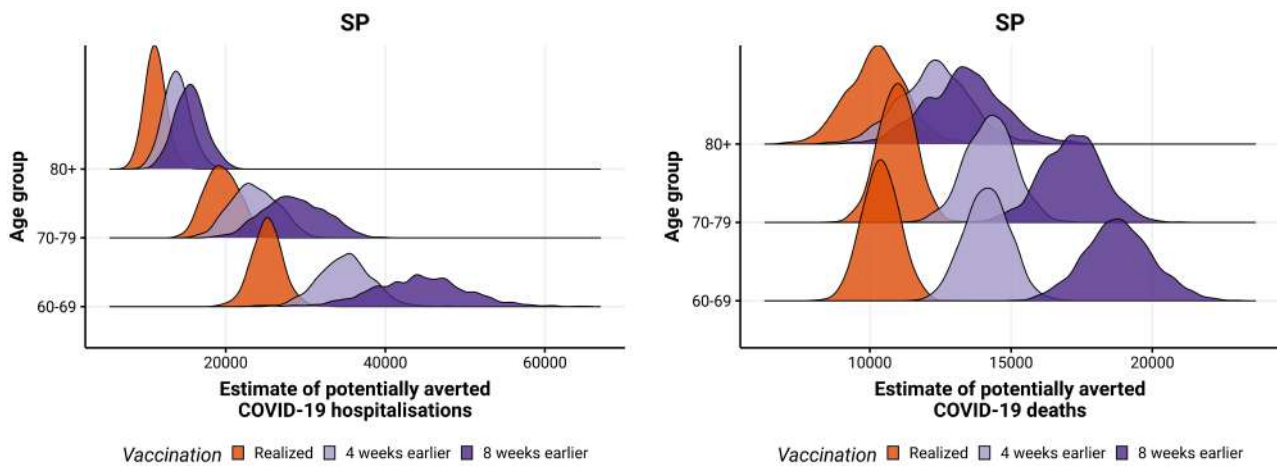


Figure S43: Posterior distribution of hospitalisations (left) and deaths (right) potentially averted by vaccination between 2021-01-01 and 2021-08-29 by age group, with the realized (orange), 4 (blue) and 8 weeks earlier (green) vaccination rollout in SP state.

1.4 South Region

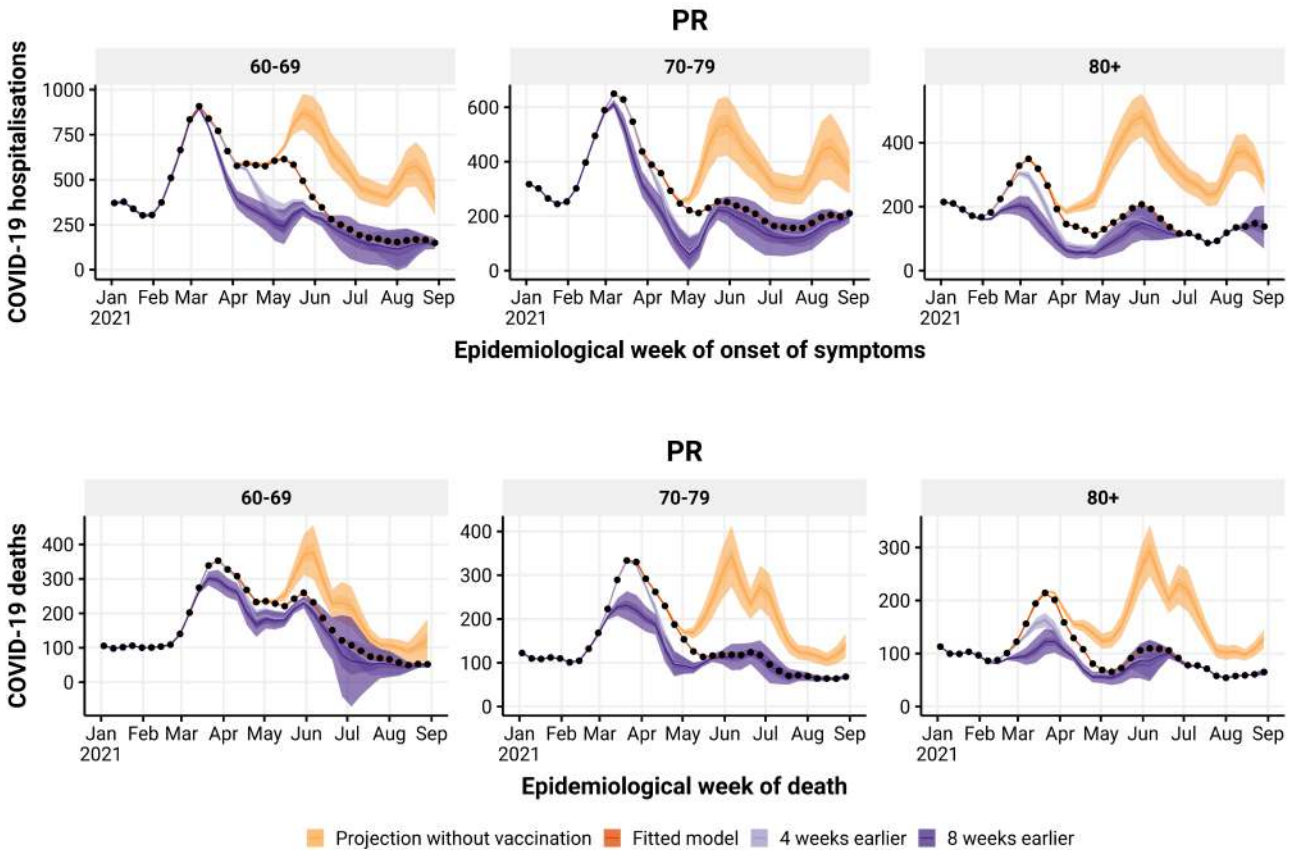


Figure S44: Estimated number of hospitalisations (top) and deaths (bottom) by epidemiological week with the realized (orange), no vaccination (blue), 4 (green) and 8 (yellow) weeks earlier vaccination rollout, by age group (panels), in PR state. The observed number of hospitalisations and deaths are given by the black points.

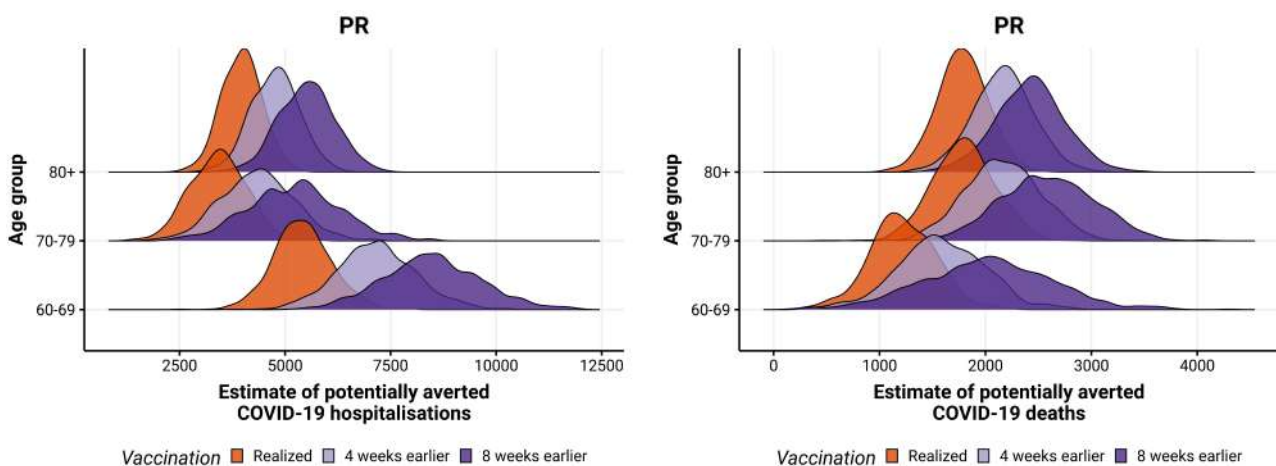


Figure S45: Posterior distribution of hospitalisations (left) and deaths (right) potentially averted by vaccination between 2021-01-01 and 2021-08-29 by age group, with the realized (orange), 4 (blue) and 8 weeks earlier (green) vaccination rollout in PR state.

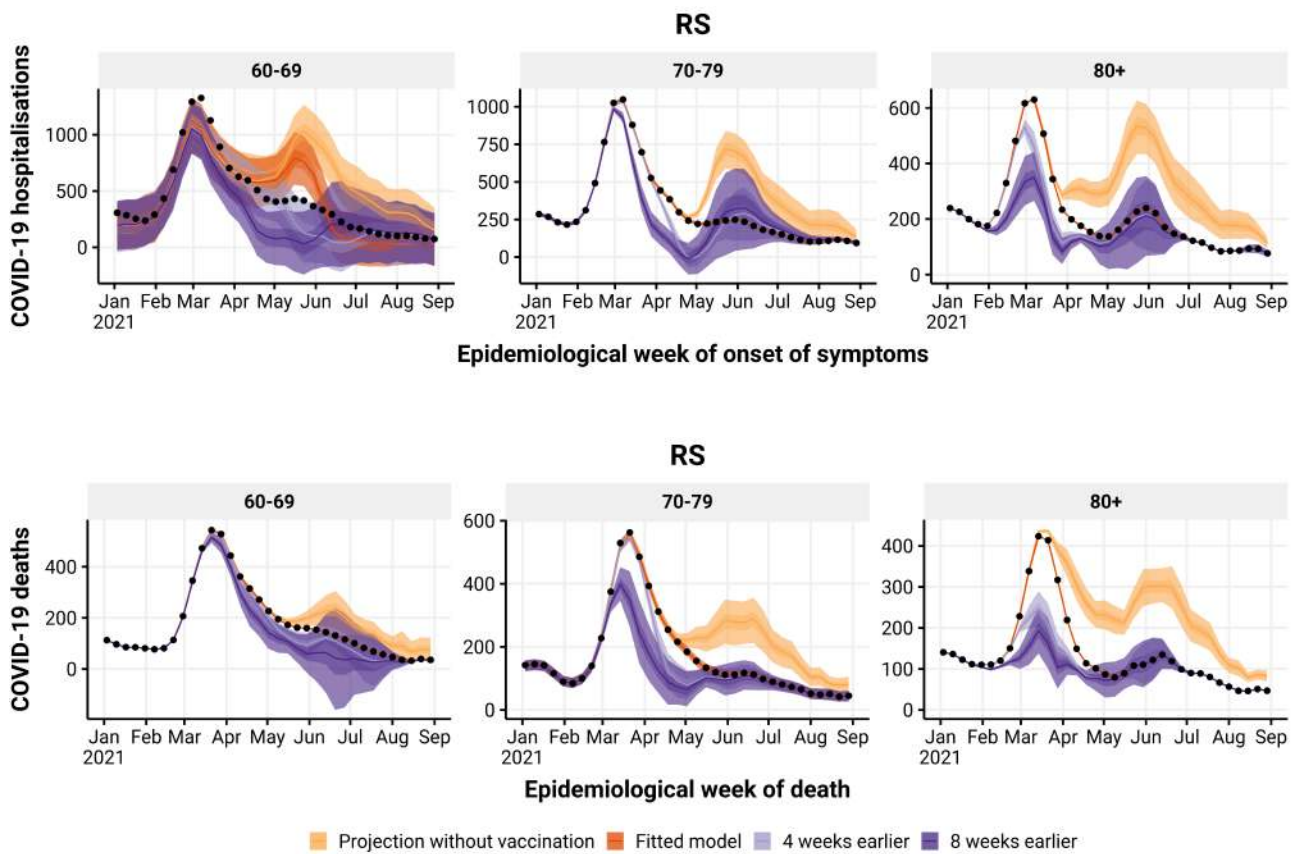


Figure S46: Estimated number of hospitalisations (top) and deaths (bottom) by epidemiological week with the realized (orange), no vaccination (blue), 4 (green) and 8 (yellow) weeks earlier vaccination rollout, by age group (panels), in RS state. The observed number of hospitalisations and deaths are given by the black points.

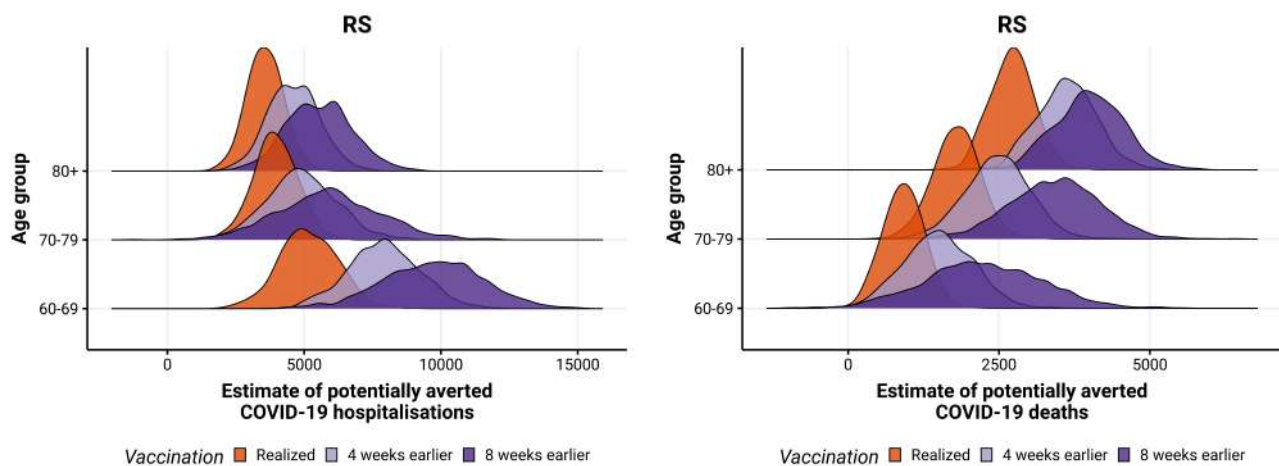


Figure S47: Posterior distribution of hospitalisations (left) and deaths (right) potentially averted by vaccination between 2021-01-01 and 2021-08-29 by age group, with the realized (orange), 4 (blue) and 8 weeks earlier (green) vaccination rollout in RS state.

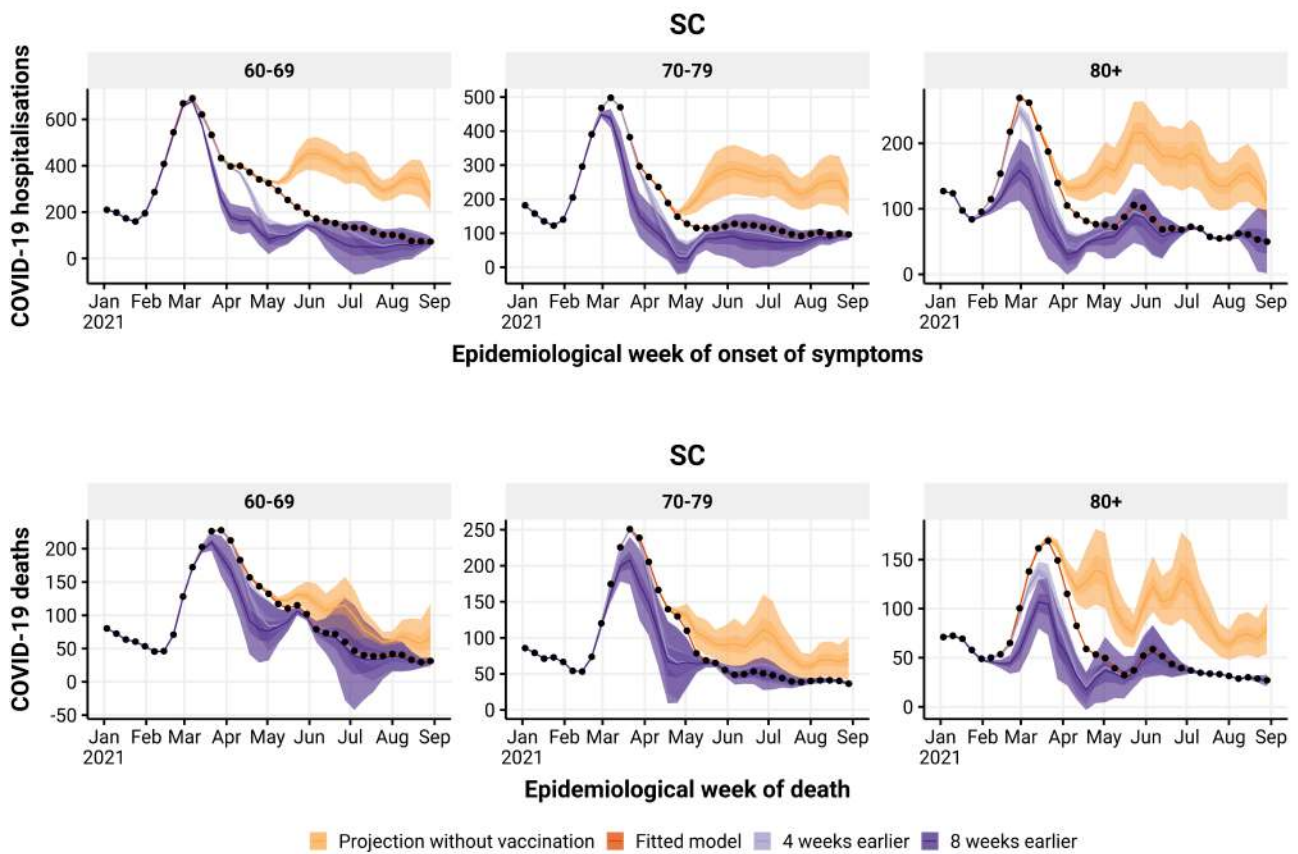


Figure S48: Estimated number of hospitalisations (top) and deaths (bottom) by epidemiological week with the realized (orange), no vaccination (blue), 4 (green) and 8 (yellow) weeks earlier vaccination rollout, by age group (panels), in SC state. The observed number of hospitalisations and deaths are given by the black points.

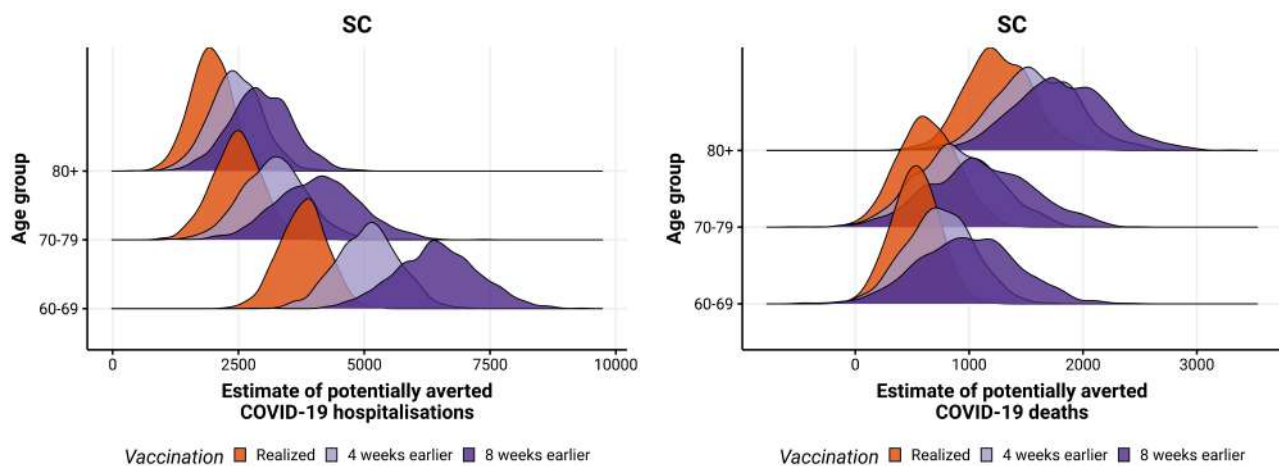


Figure S49: Posterior distribution of hospitalisations (left) and deaths (right) potentially averted by vaccination between 2021-01-01 and 2021-08-29 by age group, with the realized (orange), 4 (blue) and 8 weeks earlier (green) vaccination rollout in SC state.

1.5 Center-west Region

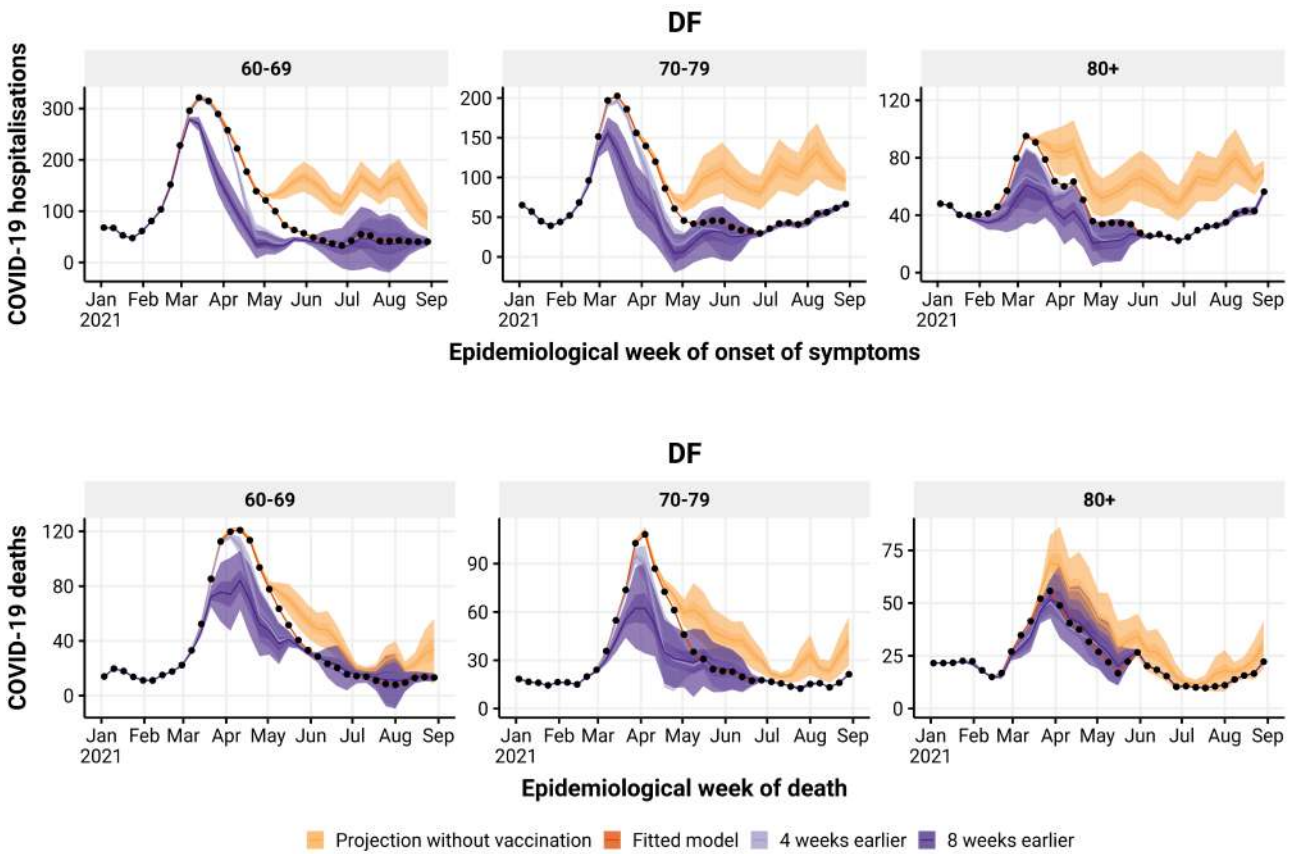


Figure S50: Estimated number of hospitalisations (top) and deaths (bottom) by epidemiological week with the realized (orange), no vaccination (blue), 4 (green) and 8 (yellow) weeks earlier vaccination rollout, by age group (panels), in DF state. The observed number of hospitalisations and deaths are given by the black points.

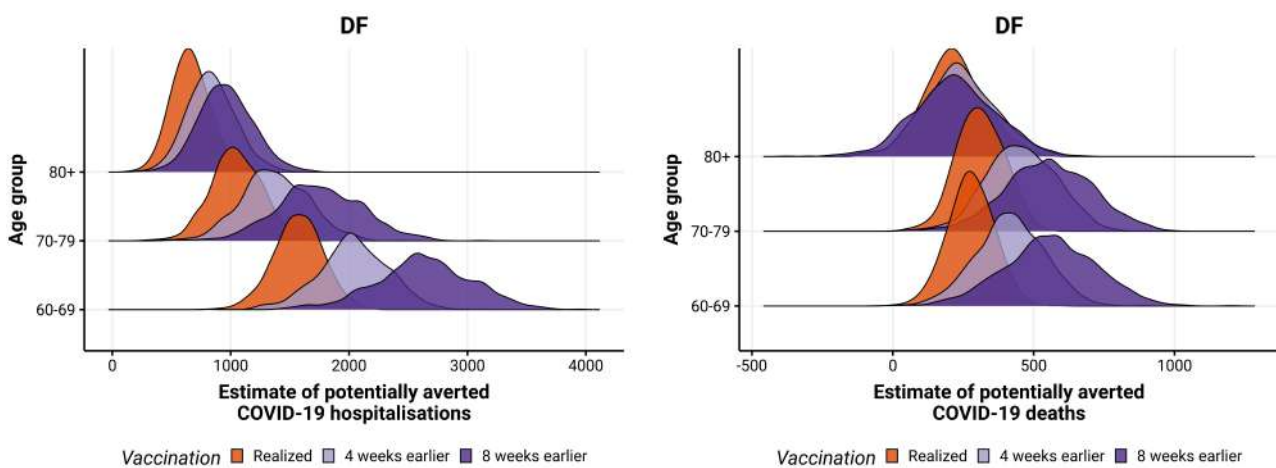


Figure S51: Posterior distribution of hospitalisations (left) and deaths (right) potentially averted by vaccination between 2021-01-01 and 2021-08-29 by age group, with the realized (orange), 4 (blue) and 8 weeks earlier (green) vaccination rollout in DF state.

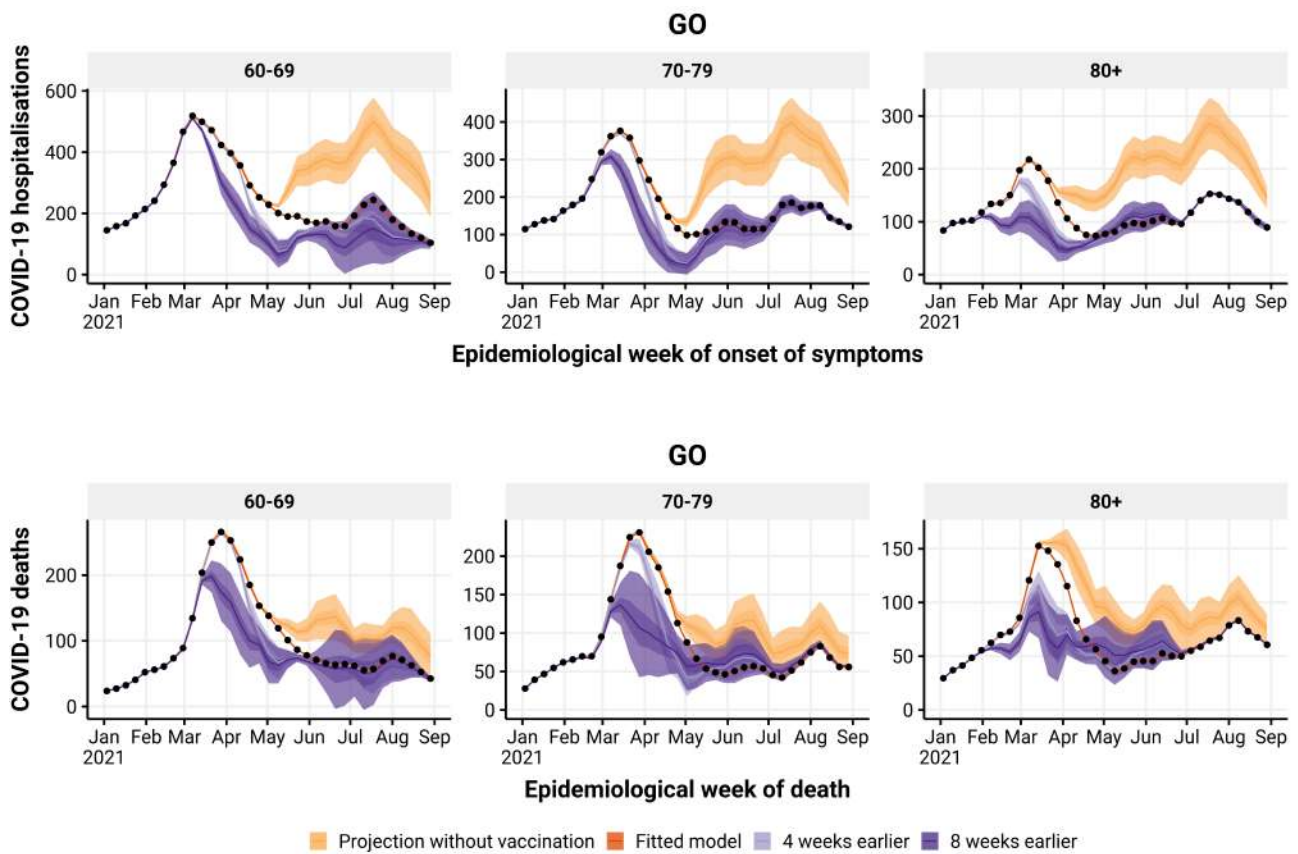


Figure S52: Estimated number of hospitalisations (top) and deaths (bottom) by epidemiological week with the realized (orange), no vaccination (blue), 4 (green) and 8 (yellow) weeks earlier vaccination rollout, by age group (panels), in GO state. The observed number of hospitalisations and deaths are given by the black points.

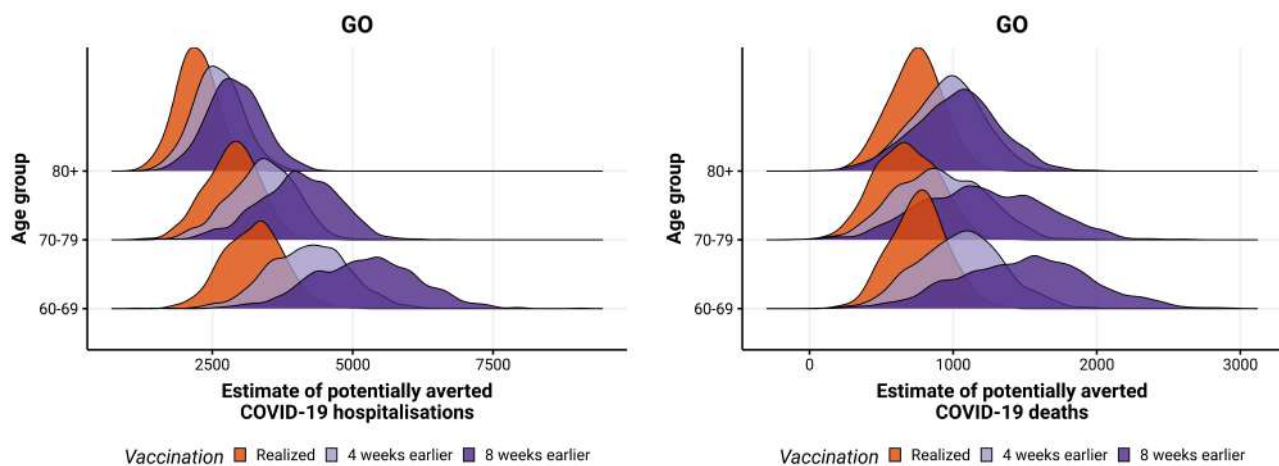


Figure S53: Posterior distribution of hospitalisations (left) and deaths (right) potentially averted by vaccination between 2021-01-01 and 2021-08-29 by age group, with the realized (orange), 4 (blue) and 8 weeks earlier (green) vaccination rollout in GO state.

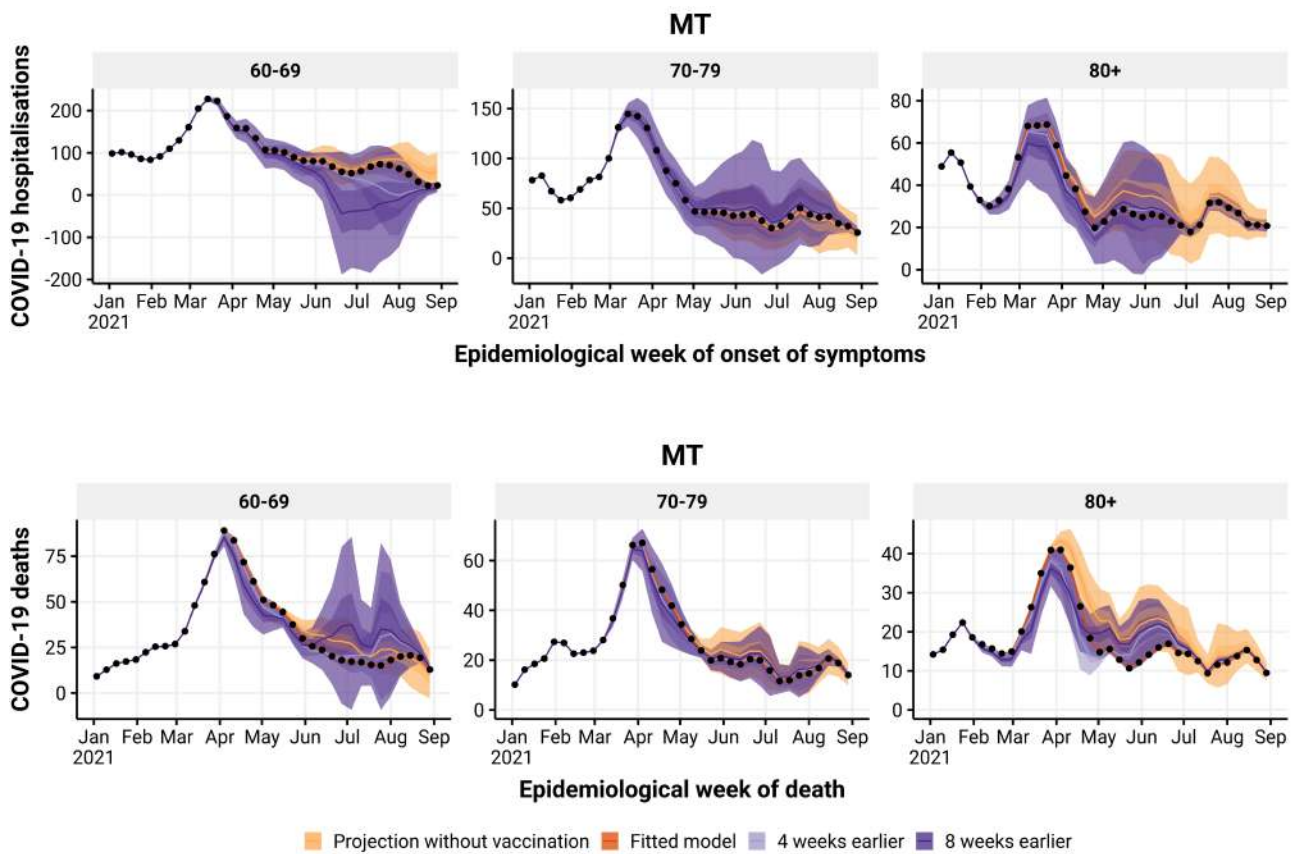


Figure S54: Estimated number of hospitalisations (top) and deaths (bottom) by epidemiological week with the realized (orange), no vaccination (blue), 4 (green) and 8 (yellow) weeks earlier vaccination rollout, by age group (panels), in MT state. The observed number of hospitalisations and deaths are given by the black points.

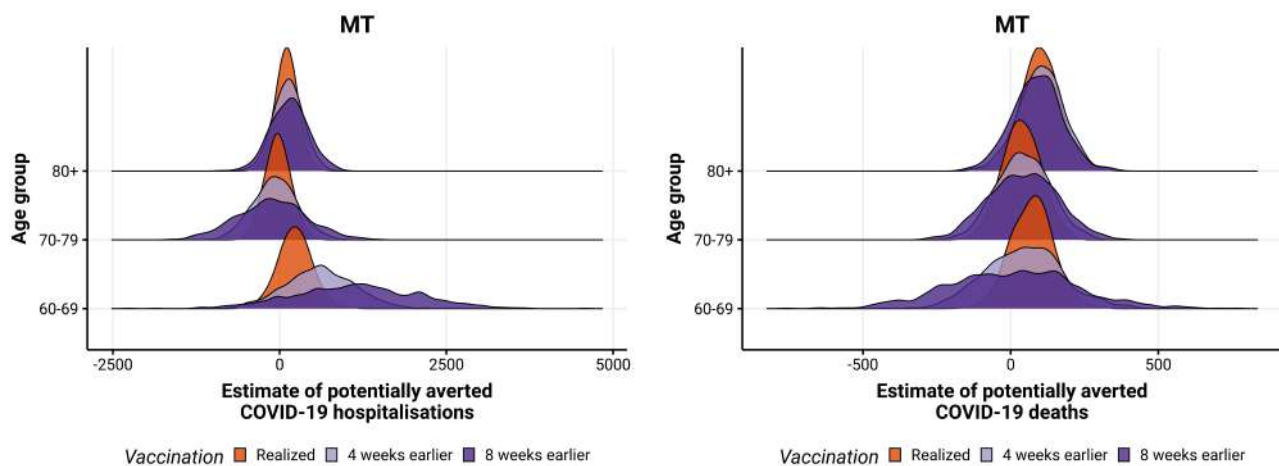


Figure S55: Posterior distribution of hospitalisations (left) and deaths (right) potentially averted by vaccination between 2021-01-01 and 2021-08-29 by age group, with the realized (orange), 4 (blue) and 8 weeks earlier (green) vaccination rollout in MT state.

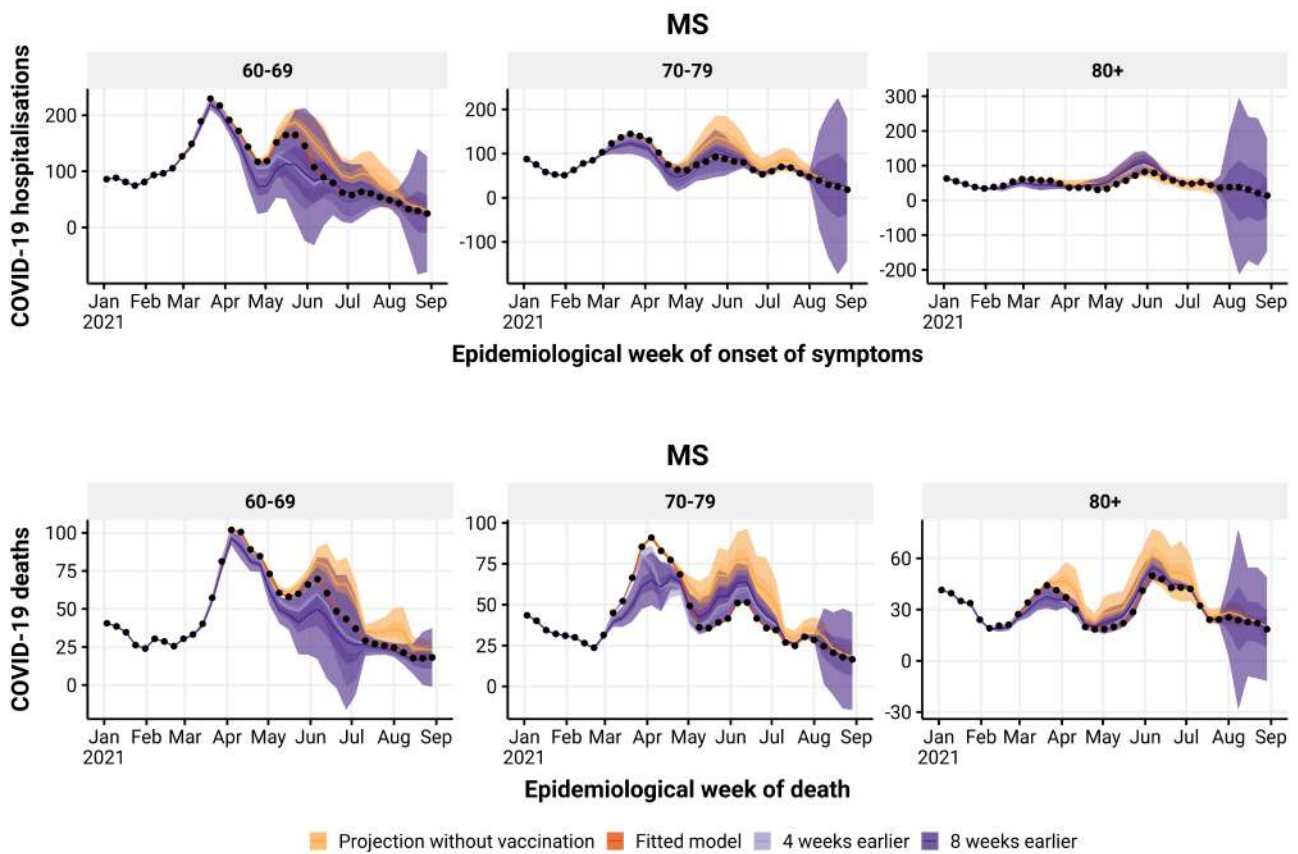


Figure S56: Estimated number of hospitalisations (top) and deaths (bottom) by epidemiological week with the realized (orange), no vaccination (blue), 4 (green) and 8 (yellow) weeks earlier vaccination rollout, by age group (panels), in MS state. The observed number of hospitalisations and deaths are given by the black points.

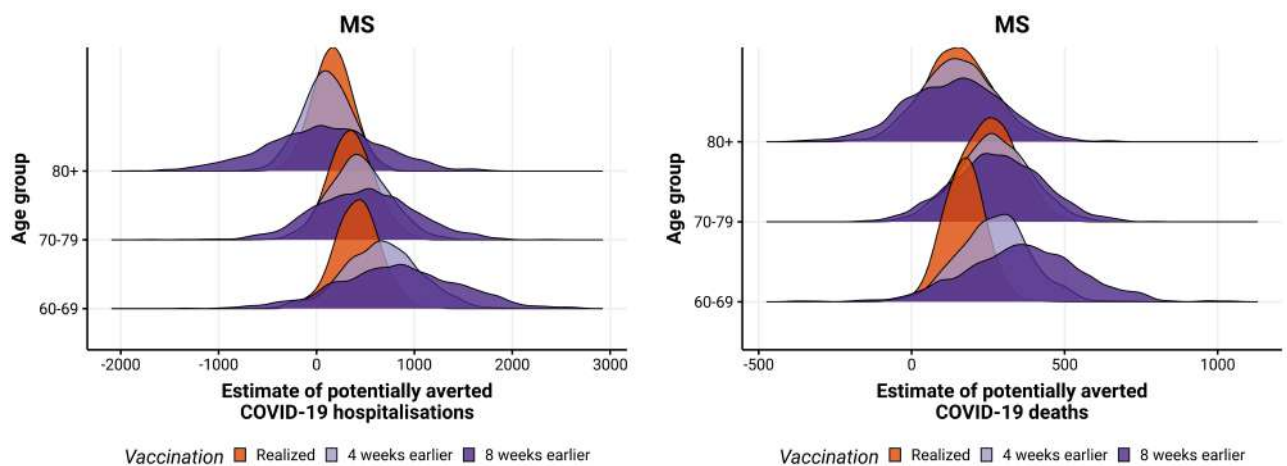


Figure S57: Posterior distribution of hospitalisations (left) and deaths (right) potentially averted by vaccination between 2021-01-01 and 2021-08-29 by age group, with the realized (orange), 4 (blue) and 8 weeks earlier (green) vaccination rollout in MS state.