

Supporting Information

for

SARS-CoV-2 RNA wastewater settled solids surveillance frequency and impact on predicted incidence using a distributed lag model

Mary E. Schoen¹, Marlene K. Wolfe², Linlin Li³, Dorothea Duong⁴, Bradley J. White⁴, Bridgette Hughes⁴, Alexandria B. Boehm^{5*}

1. Soller Environmental, LLC, 3022 King St., Berkeley, CA 94703, USA;
2. Gangarosa Department of Environmental Health, Rollins School of Public Health, Emory University, 1518 Clifton Rd, Atlanta, GA, USA, 30322
3. County of Santa Clara Public Health Department, 976 Lenzen Ave Ste 2, San Jose, CA, USA 95126
4. Verily Life Sciences, South San Francisco, CA
5. Department of Civil and Environmental Engineering, Stanford, CA 94305

* Corresponding author: 650-724-9128, aboehm@stanford.edu

Table S1. SJ model fit comparison for daily sampling for dependent variable $\log_{10}IR$ (i.e., \log_{10} 7-day

Predictor	Coefficient Estimate (St. Error)		
	Eq 1	Eq 2 U=3	Eq 2 U=6
$\log_{10} N/PMMoV_0$	0.84*** (0.02)	0.25*** (0.03)	0.19*** (0.02)
$\log_{10} N/PMMoV_1$		0.22*** (0.03)	0.16*** (0.03)
$\log_{10} N/PMMoV_2$		0.23*** (0.03)	0.15*** (0.03)
$\log_{10} N/PMMoV_3$		0.22*** (0.03)	0.13*** (0.02)
$\log_{10} N/PMMoV_4$			0.10*** (0.03)
$\log_{10} N/PMMoV_5$			0.09*** (0.03)
$\log_{10} N/PMMoV_6$			0.07*** (0.03)
% Delta _t			
Constant	-0.29*** (0.09)	0.03** (0.05)	-0.07* (0.04)
BIC	-1.56	-4.3	-4.58
Adjusted R ²	0.89	0.96	0.97
Residual Std. Error	0.20	0.11	0.10

smoothed cases/population)

* p<0.1; ** p<0.05; *** p<0.01

Table S2. PA model fit comparison for daily sampling for dependent variable $\log_{10}IR$ (i.e., \log_{10} 7-day smoothed cases/population)

Predictor	Coefficient Estimate (St. Error)		
	Eq 1	Eq 2 U=3	Eq2 U=6
$\log_{10} N/PMMoV_0$	0.62*** (0.02)	0.18*** (0.03)	0.14*** (0.02)
$\log_{10} N/PMMoV_1$		0.18*** (0.03)	0.14*** (0.02)
$\log_{10} N/PMMoV_2$		0.17*** (0.03)	0.13*** (0.02)
$\log_{10} N/PMMoV_3$		0.15*** (0.03)	0.11*** (0.02)
$\log_{10} N/PMMoV_4$			0.07*** (0.02)
$\log_{10} N/PMMoV_5$			0.06*** (0.02)
$\log_{10} N/PMMoV_6$			0.06** (0.02)
% Delta _t			
Constant	-1.31*** (0.02)	-0.99*** (0.07)	-0.90*** (0.05)
BIC	-1.34	-3.52	-3.87
Adjusted R ²	0.80	0.91	0.92
Residual Std. Error	0.24	0.16	0.14

* p<0.1; ** p<0.05; *** p<0.01

Table S3. Dav model fit comparison for daily sampling for dependent variable $\log_{10}IR$ (i.e., \log_{10} 7-day smoothed cases/population)

Predictor	Coefficient Estimate (St. Error)		
	Eq 1	Eq 2 U=3	Eq 2 U=6
$\log_{10} N/PMMoV_0$	0.51 ^{***} (0.02)	0.18 ^{***} (0.03)	0.13 ^{***} (0.03)
$\log_{10} N/PMMoV_1$		0.12 ^{***} (0.03)	0.08 ^{***} (0.03)
$\log_{10} N/PMMoV_2$		0.11 ^{***} (0.03)	0.06 ^{**} (0.03)
$\log_{10} N/PMMoV_3$		0.17 ^{***} (0.03)	0.07 ^{**} (0.03)
$\log_{10} N/PMMoV_4$			0.08 ^{***} (0.03)
$\log_{10} N/PMMoV_5$			0.08 ^{***} (0.03)
$\log_{10} N/PMMoV_6$			0.11 ^{***} (0.03)
% Delta _t			
Constant	-1.97 ^{***} (0.09)	-1.66 ^{***} (0.08)	-1.49 ^{***} (0.06)
BIC	-0.6	-3.05	-3.26
Adjusted R ²	0.75	0.85	0.88
Residual Std. Error	0.27	0.21	0.18

* p<0.1; ** p<0.05; *** p<0.01

Table S4. Sac model fit comparison for daily sampling for dependent variable $\log_{10} \text{IR}$ (i.e., \log_{10} 7-day smoothed cases/population)

Predictor	Coefficient Estimate (St. Error)		
	Eq 1	Eq 2 U=3	Eq 2 U=6
$\log_{10} \text{ N/PMMoV}_0$	0.61 ^{***} (0.02)	0.19 ^{***} (0.03)	0.15 ^{***} (0.03)
$\log_{10} \text{ N/PMMoV}_1$		0.17 ^{***} (0.03)	0.14 ^{***} (0.03)
$\log_{10} \text{ N/PMMoV}_2$		0.14 ^{***} (0.03)	0.12 ^{***} (0.03)
$\log_{10} \text{ N/PMMoV}_3$		0.16 ^{***} (0.03)	0.11 ^{***} (0.03)
$\log_{10} \text{ N/PMMoV}_4$			0.08 ^{***} (0.03)
$\log_{10} \text{ N/PMMoV}_5$			0.08 ^{**} (0.03)
$\log_{10} \text{ N/PMMoV}_6$			0.04 (0.03)
% Delta _t			
Constant	-1.38 ^{***} (0.07)	-1.20 ^{***} (0.05)	-0.92 ^{***} (0.06)
BIC	-1.87	-4.63	-4.21
Adjusted R ²	0.84	0.93	0.90
Residual Std. Error	0.14	0.09	0.11

* p<0.1; ** p<0.05; *** p<0.01

Table S5. PA model fit comparison across sampling frequency for dependent variable $\log_{10}IR$ (i.e., \log_{10} 7-day smoothed cases/population)

Predictor	Coefficient Estimate for predictors (St. Error)				
	Daily	Once every 2 days	Once every 3 days	Once every 4 days	Weekly
$\log_{10} N/PMMoV_{t-0}$	0.18*** (0.03)	0.34*** (0.04)	0.34*** (0.05)	0.35*** (0.05)	0.30*** (0.07)
$\log_{10} N/PMMoV_{t-1}$	0.18*** (0.03)				
$\log_{10} N/PMMoV_{t-2}$	0.17*** (0.03)	0.35*** (0.04)			
$\log_{10} N/PMMoV_{t-3}$	0.15*** (0.03)		0.35*** (0.05)		
$\log_{10} N/PMMoV_{t-4}$				0.36*** (0.05)	
$\log_{10} N/PMMoV_{t-7}$					0.37*** (0.07)
α	- 0.99*** (0.07)	- 0.94*** (0.10)	-0.95*** (0.14)	-0.84*** (0.12)	-1.13*** (0.29)
Adjusted R ²	0.91	0.90	0.88	0.93	0.77

* p<0.1; ** p<0.05; *** p<0.01

Table S6. Dav model fit comparison across sampling frequency for dependent variable $\log_{10}IR$ (i.e., \log_{10} 7-day smoothed cases/population)

Predictor	Coefficient Estimate for predictors (St. Error)				
	Daily	Once every 2 days	Once every 3 days	Once every 4 days	Weely
$\log_{10} N/PMMoV_0$	0.18*** (0.03)	0.25*** (0.04)	0.31*** (0.05)	0.20*** (0.06)	0.22*** (0.07)
$\log_{10} N/PMMoV_{t-1}$	0.12*** (0.03)				
$\log_{10} N/PMMoV_{t-2}$	0.11*** (0.03)	0.28*** (0.04)			
$\log_{10} N/PMMoV_{t-3}$	0.17*** (0.03)		0.29*** (0.05)		
$\log_{10} N/PMMoV_{t-4}$				0.28*** (0.06)	
$\log_{10} N/PMMoV_{t-7}$					0.32*** (0.07)
α	- 1.66*** (0.08)	- 1.88*** (0.12)	-1.51*** (0.15)	-2.07*** (0.18)	-1.71*** (0.22)
Adjusted R ²	0.85	0.77	0.81	0.73	0.83

* p<0.1; ** p<0.05; *** p<0.01

Table S7. Sac model fit comparison across sampling frequency for dependent variable $\log_{10}IR$ (i.e., \log_{10} 7-day smoothed cases/population)

Predictor	Coefficient Estimate for predictors (St. Error)				
	Daily	Once every 2 days	Once every 3 days	Once every 4 days	Weely
$\log_{10} N/PMMoV_0$	0.19*** (0.03)	0.25*** (0.07)	0.26*** (0.08)	0.20** (0.10)	0.17 (0.12)
$\log_{10} N/PMMoV_{t-1}$	0.17*** (0.03)				
$\log_{10} N/PMMoV_{t-2}$	0.14*** (0.03)	0.36*** (0.07)			
$\log_{10} N/PMMoV_{t-3}$	0.16*** (0.03)		0.45*** (0.08)		
$\log_{10} N/PMMoV_{t-4}$				0.44*** (0.10)	
$\log_{10} N/PMMoV_{t-7}$					0.48*** (0.11)
α	-1.20*** (0.05)	-1.30*** (0.14)	-0.91*** (0.19)	-1.21*** (0.17)	-1.14*** (0.26)
Adjusted R ²	0.93	0.76	0.77	0.82	0.79

* p<0.1; ** p<0.05; *** p<0.01

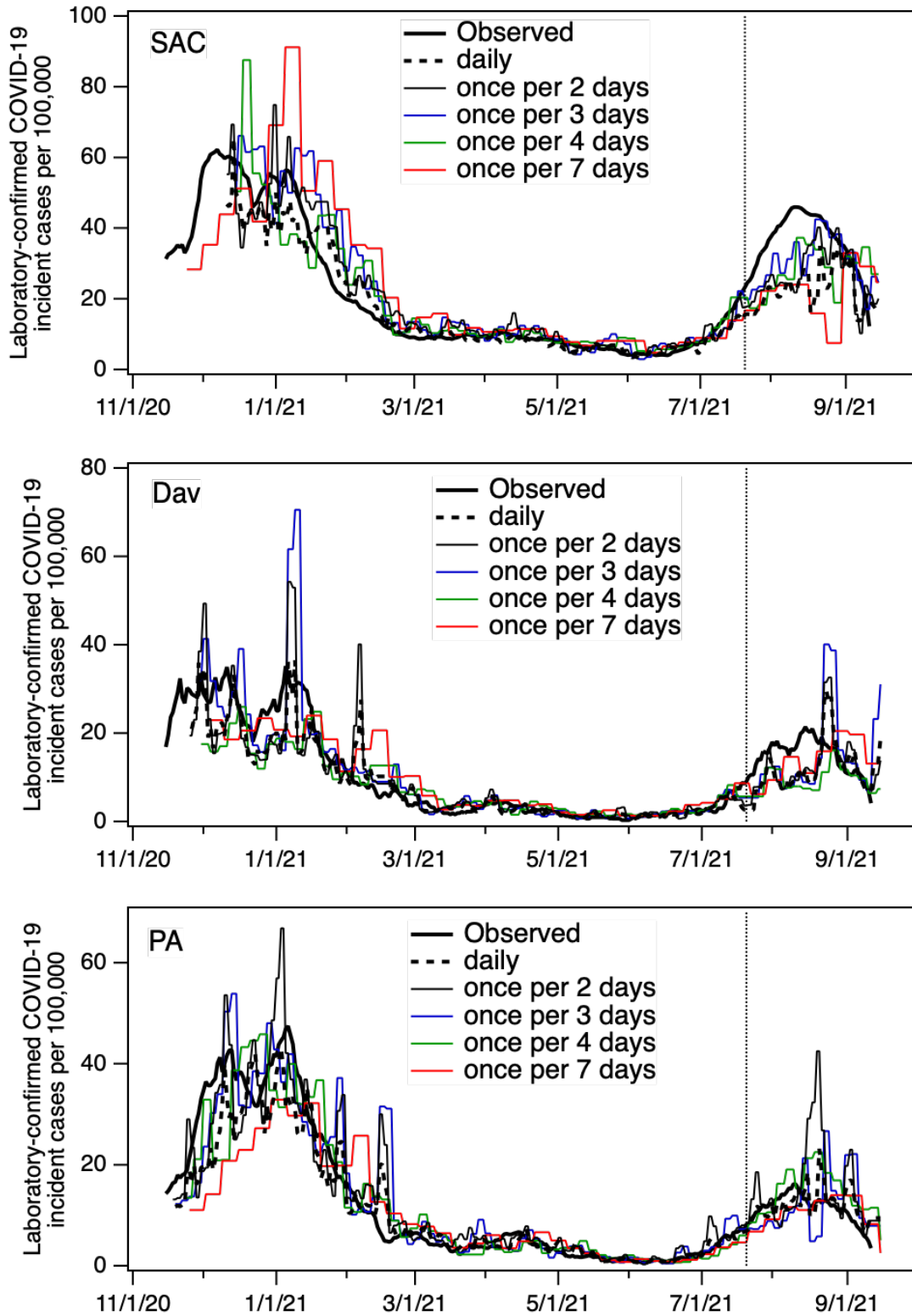


Figure S1. Predicted IR in-sample and out-of-sample prediction (after vertical line) using either daily N/PMMoV samples or with samples collected every other, third, and fourth day or weekly (trace for median in-sample RMSE presented). SJ presented in main text.

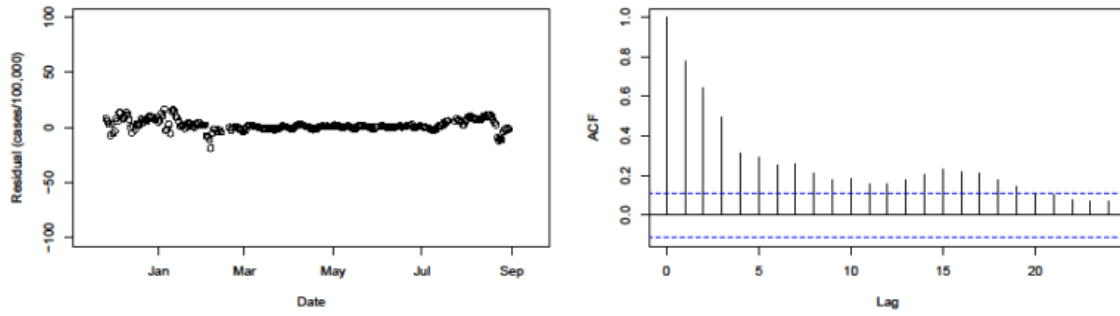


Figure S2. Residual plot and Autocorrelation of residual plot Eq 2 $U = 3$ for daily sampling D_{av}

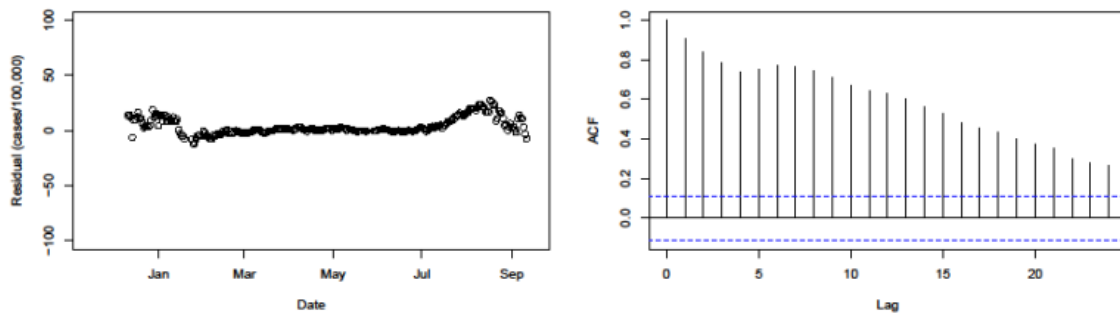


Figure S3. Residual plot and Autocorrelation of residual plot Eq 2 $U = 3$ for daily sampling S_{ac}

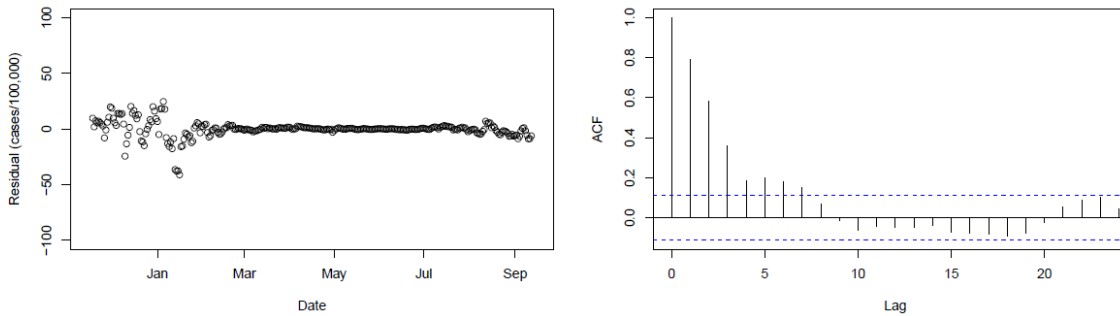


Figure S4. Residual plot and Autocorrelation of residual plot Eq 2 $U = 3$ for daily sampling S_J

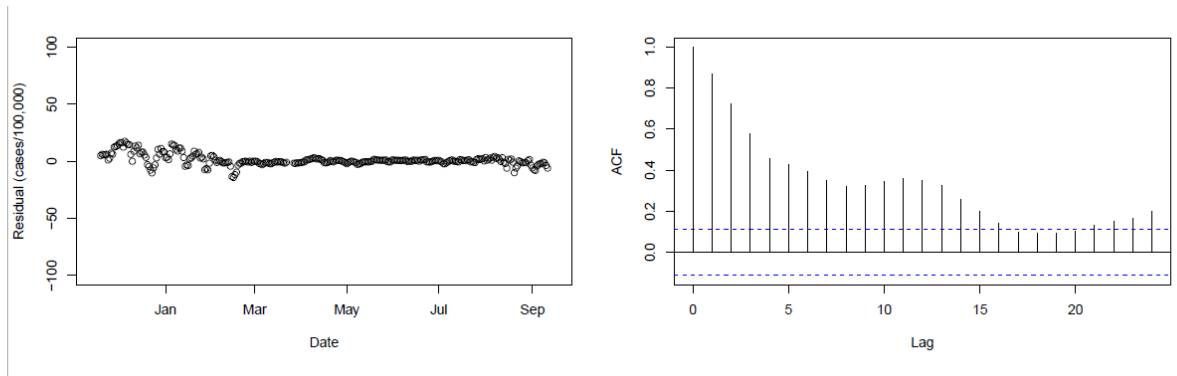


Figure S5. Residual plot and Autocorrelation of residual plot Eq 2 $U = 3$ for daily sampling PA