

1 **Title**

2 **Long-term ozone exposure associated cause-specific**
3 **mortality risks with adjusted metrics by cohort studies:**
4 **A systematic review and meta-analysis**

5
6 **Authors**

7 Haitong Zhe Sun^{1,2}, Pei Yu³, Changxin Lan^{4,5}, Michelle Wan¹, Sebastian Hickman¹,
8 Jayaprakash Murulitharan¹, Huizhong Shen⁶, Le Yuan¹, Yuming Guo^{3*}, Alexander
9 T. Archibald^{1,7*}

10
11 **Affiliations**

12 ¹ Centre for Atmospheric Science, Yusuf Hamied Department of Chemistry, University of
13 Cambridge, Cambridge CB2 1EW, United Kingdom

14 ² Department of Earth Sciences, University of Cambridge, Cambridge CB2 3EQ, United
15 Kingdom

16 ³ School of Public Health and Preventive Medicine, Monash University, Melbourne,
17 Victoria 3004, Australia

18 ⁴ Institute of Reproductive and Child Health, Key Laboratory of Reproductive Health,
19 National Health Commission of the People's Republic of China, Beijing 100191, China

20 ⁵ Department of Epidemiology and Biostatistics, School of Public Health, Peking
21 University, Beijing 100191, China

22 ⁶ School of Environmental Science and Engineering, Southern University of Science and
23 Technology, Shenzhen 518055, China

24 ⁷ National Centre for Atmospheric Science, Cambridge CB2 1EW, United Kingdom

25
26 * Correspondence to: Alexander T. Archibald (ata27@cam.ac.uk) and Yuming Guo
27 (yuming.guo@monash.edu)

28
29 *main-text 6749 words + 3 tables + 6 figures*

30
31

32 ABSTRACT

33 **BACKGROUND:** Long-term ozone (O₃) exposure could lead to a series of non-
34 communicable diseases and increase the mortality risks. However, cohort-based studies
35 were still rather rare, and inconsistent exposure metrics might impair the credibility of
36 epidemiological evidence synthesis. To provide more accurate meta-estimation, this
37 review updated the systematic review with inclusion of recent studies and summarised
38 the quantitative associations between O₃ exposure and cause-specific mortality risks
39 based on unified exposure metrics.

40 **METHODS:** Research articles reporting relative risks between incremental long-term O₃
41 exposure and causes of mortality covering all-cause, cardiovascular diseases, respiratory
42 diseases, chronic obstructive pulmonary disease, pneumonia, ischaemic heart diseases,
43 ischaemic stroke, congestive heart failure, cerebrovascular diseases, and lung cancer,
44 estimated from cohort studies were identified through systematic searches in MEDLINE,
45 Embase and Web of Science. Cross-metric conversion factors were estimated linearly by
46 decadal of observations during 1990-2019. The Hunter-Schmidt random effect estimator
47 was applied to pool the relative risks.

48 **RESULTS:** A total of 25 studies involving 226,453,067 participants (14 unique cohorts
49 covering 99,855,611 participants) were included in the systematic review. After linearly
50 adjusting the inconsistent O₃ exposure metrics into congruity, the pooled relative risks
51 (RR) associated with every 10 nmol mol⁻¹ (ppbV) incremental O₃ exposure, by mean of
52 warm-season daily maximum 8-hour average metric, was: 1.014 with 95% confidence
53 interval (CI) ranging 1.009–1.019 for all-cause mortality; 1.025 (95% CI: 1.010–1.040)
54 for respiratory mortality; 1.056 (95% CI: 1.029–1.084) for COPD mortality; 1.019 (95%
55 CI: 1.004–1.035) for cardiovascular mortality; and 1.096 (95% CI: 1.065–1.129) for
56 congestive heart failure mortality. Insignificant mortality risk associations were found for
57 ischaemic heart disease, cerebrovascular diseases and lung cancer.

58 **DISCUSSION:** This review covered up-to-date studies, expanded the O₃-exposure
59 associated mortality causes into wider range of categories, and firstly highlighted the
60 issue of inconsistency in O₃ exposure metrics. Non-intercept linear regression-based
61 cross-metric RR conversion was another innovation, but limitation lay in the observation
62 reliance, indicating further calibration with more credible observations available. Large
63 uncertainties in the multi-study pooled RRs would inspire more future studies to
64 corroborate or contradict the results from this review.

65 **CONCLUSION:** Adjustment for exposure metrics laid more solid foundation for multi-
66 study meta-analysis, and wider coverage of surface O₃ observations are anticipated to
67 strengthen the cross-metric conversion in the future. Ever-growing numbers of
68 epidemiological studies supported unneglectable cardiopulmonary hazards and all-cause
69 mortality risks from long-term O₃ exposure. However, evidences on long-term O₃
70 exposure associated health effects were still scarce, and hence more relevant studies are
71 encouraged to cover more population with regional diversity.

72 **REGISTRATION:** The review was registered in PROSPERO (CRD42021270637).

73 **FUNDING:** This study is mainly funded by UK Natural Environment Research Council,
74 UK National Centre for Atmospheric Science, Australian Research Council and
75 Australian National Health and Medical Research Council.

76

77 **Keywords**

78 *Ozone; long-term exposure; mortality; cohort; metric; respiratory; cardiovascular*

79

80 **Highlights**

- 81 1. *Updated evidence for O₃-mortality associations from 25 cohorts has been provided.*
- 82 2. *Adjusting various O₃ exposure metrics can provide more accurate risk estimations.*
- 83 3. *Long-term O₃-exposure was associated with increased mortality from all-causes, respiratory*
84 *disease, COPD, cardiovascular disease and congestive heart failure.*

85

86 1 INTRODUCTION

87 Atmospheric ozone (O₃) is a short-lived climate forcer.¹ Besides warming the global
88 atmosphere, O₃ in the stratosphere can abate the radiation hazards from ultraviolet rays
89 onto organisms, while O₃ in the ambient air is of detrimental defects on ecosystem and
90 human health,²⁻⁴ and hence health effects caused from exposure to surface O₃ have
91 become a serious public concern. Short-term (i.e. hours to days) exposure to high-level
92 O₃ can cause a series of acute symptoms like asthma, respiratory tract infection,
93 myocardial infarction, and cardiac arrest;⁵⁻⁸ and long-term (i.e. over years) exposure can
94 lead to chronic health outcomes including but not limited to preterm delivery, stroke,
95 chronic obstructive pulmonary diseases, and cerebrovascular diseases.⁹⁻¹² Long-term
96 ambient O₃ exposure was estimated to be responsible for over 0.36 million premature
97 deaths globally in 2019 according to the Global Burden of Disease (GBD) report released
98 by the Institute for Health Metrics and Evaluation (IHME).¹³

99 Systematic reviews summarising the associations between the adverse health
100 outcomes, and both the short-term and long-term O₃ exposures, have been performed in
101 previous studies.¹⁴⁻¹⁶ Studies on short-term O₃ exposure-induced morbidities are
102 comparatively more abundant than the long-term O₃ exposure studies where the
103 epidemiological evidences are less congruous. Some deficiencies are spotted in the two
104 reviews for long-term O₃ exposure-associated mortality risk studies,^{15, 16} the primary
105 issue of which is the inconsistent use of various O₃ exposure metrics; however, no other
106 reviews are found to remedy these flaws. As a secondary photolytic gaseous air pollutant,
107 the warm-season and diurnal concentrations of surface O₃ will be much higher than cool-
108 season and nocturnal concentrations,^{17, 18} and thus the average and peak metrics of O₃
109 concentrations shall be of drastically different realistic implications.¹⁹ Under this
110 circumstance, directly pooling the relative risks scaled in different metrics might lead to
111 biases.

112 Atkinson et al. (2016) explored 6 types of mortality causes, but searched the
113 literatures only till 2015;¹⁶ while Huangfu et al. (2019) updated the searches to 2018, but
114 only 3 types of mortality causes were considered.¹⁵ We thus determine to update the
115 review on the health effects of O₃ to include more categories of mortalities together with
116 covering the most recent publications. Additionally, GBD estimations ascribed long-term
117 O₃-exposure induced all-cause mortality for chronic obstructive pulmonary disease,¹³
118 which might lead to underestimations without considering other causes. It is reasonable
119 to deduce that long-term O₃ exposure will exacerbate the mortality of certain diseases
120 given that the short-term exposure increases the morbidity risks of the same diseases, and

121 thus scrutinising epidemiological evidences for multiple causes of mortality will provide
122 more credible supports to fill in this gap.

123 The primary innovation of our updated review is our taking full advantage of global
124 systemic stationary observations to explore the feasibility of adjusting the various
125 exposure metrics, and pooling the multi-study risks with the unified exposure metric, the
126 mean of warm-season daily maximum 8-hour average, in response to the up-to-date
127 suggestions from the Lancet global environmental health collaboration.²⁰ Through this
128 updated systematic review and meta-analysis on long-term O₃ exposure associated cause-
129 specific mortality risks, we aim to present and evaluate epidemiological evidences for 3
130 major questions not fully addressed by the previous 2 reviews, as (1) which mortality
131 causes shall be ascribed to long-term O₃ exposure; (2) have the risk associations changed
132 given the latest studies with more mature research design and methodologies; and (3)
133 how to estimate the quantities of the risk association strengths by the suggested exposure
134 metric. Both our methods and discoveries are expected to inspire future O₃-health studies,
135 and support relevant policy-making to benefit the global population.

136

137 **2. METHODS**

138 **2.1 Search strategy**

139 We searched 3 research databases (MEDLINE, Embase, and Web of Science) from 1
140 September, 2015 till 1 February, 2022 to finish our systematic review and meta-analysis,
141 updated from 2 previous reviews on long-term O₃ exposure-associated mortality.^{15, 16}
142 Search terms also referred to these 2 previous systematic reviews with modifications to
143 enhance the inclusion of potential relevant studies, as we combined the keywords
144 relevant to the cause-specific mortalities (i.e. “mortality”, “death”, “premature death”,
145 “all-cause”, “non-accidental”, “cardiopulmonary”, “respiratory”, “chronic obstructive
146 pulmonary disease”, “pneumonia”, cardiovascular, “lung cancer”, “cerebrovascular”,
147 “stroke”, “ischaemic heart disease”, “congestive heart failure”), the pollutant of research
148 interest (i.e. “ozone”), and qualified epidemiological study types (i.e. “long-term”,
149 “cohort study”, “prospective”, “retrospective”, “longitudinal study”). The detailed search
150 strategies were listed in **Table S1**. Health outcomes considered in the systematic review
151 were: mortality from (1) all causes (AC, ICD9: 001-799, ICD10: A00-R99); (2) all
152 respiratory diseases (RESP, ICD9: 460-519, ICD10: J00-J98); (3) chronic obstructive

153 pulmonary diseases and allied conditions (COPD, ICD9: 490-496, ICD10: J19-J46); (4)
154 all cardiovascular diseases (CVD, ICD9: 390-459, ICD10:I00-I98); (5) all
155 cerebrovascular diseases (CEVD, ICD9: 430-438, ICD10: I60-I69); (6) ischaemic heart
156 disease (IHD, ICD9: 410-414, ICD10: I20-I25); (7) congestive heart failure (CHF, ICD9:
157 428, ICD10: I50); (8) ischaemic stroke (ICD9: 434, ICD10: I61-I64); (9) pneumonia
158 (ICD9: 480-487, ICD10: J12-J18); and (10) lung cancer (LC, ICD9: 162, ICD10: C33-
159 C34).

160 **2.2 Study eligibility criteria**

161 As an updated systematic review, literatures identified in the previous 2 reviews
162 underwent examination together with the newly retrieved ones. Studies were included
163 during screening following the criteria as: (1) the epidemiological research should be
164 conducted based on cohorts; (2) the exposure should include O₃ as an individual risk
165 factor; (3) the health outcomes should be all-cause or cause-specific deaths at individual
166 level; (4) studies provided hazard ratio (HR), risk ratio (RR) or odds ratio (OR) and their
167 95% confidence intervals (CIs) clearly and reported by every increase unit (e.g. 10-ppbV)
168 of exposure concentrations, assuming linear risk relationship with adjusting key
169 confounders; (6) the study should be published as an original research article in scholarly
170 peer-reviewed journals in English. For articles from the same cohort, only one single
171 study covering the widest populations and the longest follow-up period was reserved for
172 meta-analysis, unless the subgroups of participants and study follow-up periods are
173 clearly stated to be of mild overlapping; We followed the Preferred Reporting Items for
174 Systematic Review and Meta-Analyses (PRISMA) guidelines to process the included
175 studies on ambient O₃ exposure induced mortality.

176 **2.3 Study selection and scrutinisation**

177 All searched literatures were archived in Clarivate™ Analytics Endnote X9.3.1
178 reference manager software. Two literature review investigators (HYS and CL)
179 conducted title and abstract pre-screening independently for all web-searched records and
180 reviewed the full text for the pre-screened studies. Disagreements were resolved by
181 discussions with a third reviewer (PY).

182 **2.4 Data extraction**

183 Details from each screened-out literatures were extracted and labelled for the purpose
184 of meta-analysis, including (1) the authors with publication year as study labels of
185 reference; (2) basic descriptive information of the study cohort embracing the cohort
186 name, country, follow-up periods, numbers of cases and total participants, population
187 genders and ethnics, exposure metrics, health outcomes, and major confounders; (3) the
188 risk association effects preferably quantified in HR (and also RR/OR as substitute
189 choices) per unit incremental exposure with 95% confidence interval (CI).

190 **2.5 Study quality assessment**

191 All screened-out studies underwent quality evaluation using the Quality Assessment
192 Tool of Observational Cohort and Cross-Sectional Studies developed by National
193 Institute of Health (NIH) ([https://www.nhlbi.nih.gov/health-topics/study-quality-](https://www.nhlbi.nih.gov/health-topics/study-quality-assessment-tools)
194 [assessment-tools](https://www.nhlbi.nih.gov/health-topics/study-quality-assessment-tools)), aiming to ensure the studies considered for meta-analysis are
195 adequately reliable. The assessments were cross-validated by two authors (HZS and CL)
196 independently, with the third author (PY) supervising any disagreements. **Table S2** listed
197 14 assessment items assigned with 1 score for each, and the tallied scores were translated
198 into a literature-specific rating of quality. Studies scoring full-mark 14 were categorised
199 to be “Good”, while 10-13 as “Fair” and <10 as “Poor”.

200 Besides applying the quality assessment tool to determine which reviewed studies
201 should be included for meta-analysis, checking the epidemiological evidence quality
202 from the included literatures for each cause of mortality was finished through the Grading
203 of Recommendations Assessment, Development, and Evaluation (GRADE) system^{21, 22} to
204 yield rating bands ranging across “high”, “moderate”, “low”, and “very low”. This
205 grading system by default rated “high-quality” for cohort studies as the starting point of
206 evaluation, and the rate would be downgraded by five limitations as the existence of (1)
207 risk of bias examined by the Quality Assessment Tool (**Table S2**), (2) imprecision (i.e.
208 studies did not report the central risk estimations with confidence intervals), (3)
209 inconsistency (i.e. the directions of the estimated risks were controversial across studies),
210 (4) indirectness (i.e. studies did not include the desired population, exposure, or health
211 outcomes), and (5) publication bias (i.e. researchers tended to publish studies with
212 positive results); and upgraded by three strengths as reporting (1) exposure-response
213 trend, (2) residual confounding (i.e. adjusting the confounders highlighted the risks), and
214 (3) strong associations. Publication biases were graphically presented by funnel plots,²³

215 and statistically tested by trim-and-fill method.²⁴ The review was registered in
216 PROSPERO (CRD42021270637).

217 **2.6 Exposure adjustment**

218 **2.6.1 Unit unification**

219 There were two major units used to quantify the surface O₃ concentrations, nmol
220 mol⁻¹ or parts per billion by volume mixing ratio (ppbV) more frequently used by
221 atmospheric modelling researchers,^{17, 18, 25} and milligram per cubic metre by mass
222 concentration (μg/m³) widely used by public health studies.¹² These two units are
223 interchangeable to each other based on the ideal gas law $PV = nRT$, if the air
224 temperatures (T) and pressures (P) are given, as presented in eqs 1–4.

$$225 \quad 1 \text{ ppbV } O_3 = \frac{1 \times 10^{-9} \text{ mol } O_3}{1 \text{ mol air}} \quad (\text{eq. 1})$$

$$226 \quad 1 \text{ mol air} \Leftrightarrow \frac{RT}{P} \times 1 \text{ mol (m}^3) = \frac{8.314 \text{ Pa} \cdot \text{m}^3 \cdot \text{K}^{-1} \times T}{P} \text{ (m}^3) \quad (\text{eq. 2})$$

$$227 \quad 1 \times 10^{-9} \text{ mol } O_3 \times 47.997 \text{ g} \cdot \text{mol}^{-1} = 47.997 \times 10^{-9} \text{ g } O_3 \quad (\text{eq. 3})$$

$$228 \quad 1 \text{ ppbV } O_3 = \frac{47.997 \times 10^{-9} \text{ g} \times 10^6 \mu\text{g} \cdot \text{g}^{-1} O_3}{8.314 \text{ Pa} \cdot \text{m}^3 \cdot \text{K}^{-1} \times T/P \text{ m}^3 \text{ air}} = 5.773 \times 10^{-3} \times \frac{P(\text{Pa})}{T(\text{K})} \frac{O_3}{\text{air}} \mu\text{g} \cdot \text{m}^{-3} \quad (\text{eq. 4})$$

229 Assuming T = 298.65 K (25.5°C) and P = 101.325 kPa, the ppbV-μg/m³ conversion
230 factor could be approximated as 1 ppbV ~ 1.96 μg/m³. Though the surface air
231 temperatures and pressures would vary across seasons, such simplification was still
232 widely used in previous studies,^{15, 26, 27} being of more credibility for long-term surface O₃
233 studies averaging the surface air temperatures and pressures at longer periods. For
234 example, even at very low temperature of 270 K, the conversion factor was 2.17, which
235 corroborated the stability of linear conversion.

236 **2.6.2 Metric unification**

237 Surface O₃, as a secondary photochemistry pollutant involving photolysis of NO₂ to
238 trigger chains of radical reactions, has concentrations that will vary significantly between

239 day and night-time, and between warm and cool seasons, as discussed by numbers of
240 studies.^{17, 28-31} Under this circumstance, various daily metrics to quantify the surface O₃
241 concentrations emerged due to series of considerations, which however brought in more
242 difficulties to assimilate epidemiological evidences. The previous reviews simply pooled
243 the reported risk association strengths without adjusting the diverse metrics,^{15, 16} which
244 we thought was a fatal defect requiring improvements.

245 We therefore designed to update the meta-analysis by unifying the exposure metrics
246 for pooled O₃ exposure-associated risks. As suggested by the U.S. EPA final report of *Air*
247 *Quality Criteria for Ozone and Other Photochemical Oxidants*,³² linear relationships
248 were assumed to estimate the cross-metric conversion factors using long-term reliable
249 observations as the Tropospheric Ozone Assessment Report (TOAR) archive¹⁹ and China
250 National Environmental Monitoring Centre (CNEMC, <http://www.cnemc.cn/en/>) in our
251 review, and correlation matrix was used to validate that the presumptions of linearity
252 were not violated. Both TOAR and CNEMC sites measured the surface O₃ by means of
253 the UV absorption technique with strict quality control so as to ensure the comparability
254 of the records across different countries and regions.^{33, 34} We considered 6 complex
255 metrics for mutual conversion as (1) annual mean of 24-hour daily average (ADA24), (2)
256 6-month warm season mean of 24-hour daily average (6mDA24), (3) annual mean of
257 daily maximum 8-hour average (ADMA8), (4) 6-month warm season mean of daily
258 maximum 8-hour average (6mDMA8), (5) annual mean of daily maximum 1-hour
259 average (ADMA1), and (6) 6-month warm season mean of daily maximum 1-hour
260 average (6mDMA1). Long-term averaging-based metric conversion could smooth the
261 temporal variations resulting from the seasonal and geographical solar radiation
262 variabilities. The linear conversion factors (k) were mathematically defined by eq 5, to
263 adjust the original metric into the target one with irreducible regression errors ϵ .

$$264 \quad C_{Adjusted} = k_{Original \rightarrow Adjusted} \times C_{Original} + \epsilon \quad (\text{eq. 5})$$

265 **2.7 Meta-analysis**

266 We collectively named relative risks (RR) for HR/RR/OR throughout our meta-
267 analysis. All literature-reported RRs were converted into adjusted incremental risk ratios
268 with a 10-ppbV O₃-exposure increase by target metric (i.e. 6mDMA8 in this study),
269 following eq 6 as shown below:

$$270 \quad RR_{Adjusted} = e^{\left(\frac{\ln RR_{Original}}{k_{Original \rightarrow Adjusted}} \right)} \quad (\text{eq. 6})$$

271 where \ln is the natural logarithm, $RR_{Original}$ is the originally reported risk estimates
272 scaled into 10-ppbV incremental exposure, and $k_{Original \rightarrow Adjusted}$ is the conversion factor
273 for metric unification. Multi-study pooled risks with 95% confidence interval (CI) were
274 calculated from the adjusted RRs by Hunter-Schmidt random effect meta-regression
275 estimator to correct the potential errors and biases caused from the diversity of study
276 population and methodologies.³⁵

277 We applied the Higgins I^2 to quantify the heterogeneity across studies. The Higgins
278 statistics I^2 is defined as

$$279 \quad I^2 = \frac{Q - df}{Q} \times 100 \% \quad (\text{eq. 6})$$

280 where Q is the Cochran's non-parametric heterogeneity statistic assessing whether there
281 are any cross-study differences in risks based on χ^2 distribution and df is the
282 corresponding degrees of freedom.³⁶ Low I^2 values indicate no important heterogeneity
283 observed and high I^2 values, especially >75%, indicate considerable heterogeneity.

284 Subgroup analyses were conducted by grouping the selected studies upon the gender,
285 regions, O₃ exposure metrics, and methodological reliability of individual exposure
286 assignment; together with the adjustment of ethnicity, body mass index (BMI), smoking
287 history, lifestyle features, and exposure to PM_{2.5} and NO₂. Subgroups should contain at
288 least 3 studies. Leave-one-out sensitivity analyses were also accomplished to test the
289 robustness of synthesised overall risks by meta-analysis. All meta-analyses were
290 performed in R 4.1.1 with packages *meta*, *metafor*, and *metainf*.

291 The most widely recognised approach to construct the integrated exposure-response
292 (IER)³⁷ relationships required sufficient epidemiological studies to comprehensively
293 sample the population exposure levels. However, studies on long-term O₃ exposure
294 health effects were relatively limited, under which circumstance we made methodological
295 modifications to make better use of the variabilities in exposure levels by statistically
296 imputing the exposure distributions for each study from the provided statistics (e.g. mean,
297 standard deviation, and percentiles) for curve fitting as elaborated in [Supplementary Text](#)
298 [S1](#). [Supplementary Text S2](#) described the detailed procedures of exposure distribution
299 imputations with a demonstration provided in [S3](#), through which high uncertainties were
300 still observed in the fitted IER curves due to insufficient epidemiological evidences.

301

302 **3. RESULTS**

303 **3.1 Study characters**

304 From the 3 databases during September 2015 till February 2022, a total of 339
305 studies (77 from MEDLINE, 102 from Embase, and 160 from Web of Science) were
306 searched; and together with 34 additional literatures added manually from the 2 previous
307 systematic reviews,^{15, 16} 373 studies underwent duplication censoring, deleting 101
308 duplicated studies. After detailed scrutinisation for 272 studies, a total of 25 studies
309 concerning long-term O₃ exposure and multi-cause mortalities were finally enrolled for
310 quality evaluation, meta-analysis and further discussions (**Figure 1**).³⁸⁻⁶² **Table 1**
311 summarised the basic information of the 25 included studies sorted by the publication
312 year and surname of the first author.

313 **3.2 Metrics and exposure assignments**

314 Our updated systematic review stressed more on the exposure metrics and
315 methodologies to obtain O₃ exposure, as summarised in **Table 2**. Abbey et al. (1999),³⁸
316 Jerrett et al. (2013)⁴⁶ and Lipsett et al. (2011)⁴³ did not state the metric they used clearly,
317 but based on comparisons between the reported surface O₃ concentrations and TOAR
318 observational archives, we reasonably assumed ADA24 for the first study, and ADMA8
319 for the rest two. Details of the metric matching were given in **Supplementary Text (S4)**.
320 Lipfert et al. (2006)³⁹ used the highest 95th percentile by hourly resolved O₃
321 concentrations as the peak exposure metric, which was only used in this one singular
322 study, and hence approximated to DMA1. Krewski et al. (2009)⁴¹ and Smith et al.
323 (2009)⁴² were both studies on ACS CPS II, and thus the same exposure assignment
324 methodologies and metrics were assumed as Jerrett et al. (2009).⁴⁰ Likewise, Cakmak et
325 al. (2018)⁵³ and Weichenthal et al. (2017)⁵² were assumed to inherit Crouse et al. (2015)⁴⁸
326 as all these 3 studies were on CANCHEC. Warm season was defined as 6 months from
327 April to September in terms of the northern hemisphere by default, but we made no
328 exceptions to 3 studies as Zanobetti et al. (2011)⁴⁴ using May to September, and Crouse
329 et al. (2015)⁴⁸ and Paul et al. (2020)⁵⁷ using May to October, due to limited number of
330 studies searched.

331 Across all included studies, multiple methods were applied to obtain gap-free surface
332 O₃ concentrations for individual-level exposure assignment. The most basic way was the

333 nearest neighbour matching between participant residential locations and *in situ*
334 observation sites, which were more frequently used in earlier studies.^{39, 40} A
335 comparatively more complicated way was statistical spatial interpolation, by inverse
336 distance weighting⁴⁶ or ordinary kriging⁴¹. Full spatial coverage products, such as
337 satellite-based remote-sensing⁵¹ and chemistry transport models⁵⁶, were used in some
338 studies by supervised-learning-based data fusion techniques including but not limited to
339 universal kriging embedded land use regression,⁴⁷ Bayesian hierarchical model⁵⁰ and
340 ensemble learning⁵¹ to enhance the spatial extrapolation accuracy, which were evaluated
341 to be of higher credibility than the basic ones described previously. All basic
342 interpolation methods using merely the observations were rated as “Low”; applying
343 chemical transport model simulations without calibration from the observations as
344 “Moderate”; linearly coupling the observations with simulations as “Good”; and multi-
345 source data assimilation by means of more sophisticated approaches as “High”. To sum
346 up, 8 studies were rated “High”, 5 were “Good”, 2 were “Moderate”, and 10 were “Low”.
347 Methodological progresses with time were evident as manifested in **Table 2**, prefiguring
348 an explosion of population-based environmental health studies in the age of big data.

349 Based on the TOAR and CNEMC *in situ* observations, the cross-metric non-intercept
350 linear conversion factors were estimated with regression accuracies given in **Figure 2**.
351 Synthesised from the recent relevant studies, the 6mDMA8 metric was more
352 recommended to highlight the peak exposure; and therefore, we chose to convert the
353 originally reported RRs uniformly into the 6mDMA8 scale as standard. The O₃ exposure
354 levels by the original and unified metric were listed in **Supplementary Text S1**.
355 Demonstrations for the conversion interpretation and procedures were presented in
356 **Supplementary Text S5**, respectively.

357 **3.3 Meta-analysis results**

358 We conducted meta-analyses for long-term O₃ exposure-associated into 10 categories
359 of mortalities as (1) all causes (AC), (2) all respiratory diseases (RESP), (3) chronic
360 obstructive pulmonary diseases and allied conditions (COPD), (4) all cardiovascular
361 diseases (CVD), (5) all cerebrovascular diseases (CEVD), (6) ischaemic heart disease
362 (IHD), (7) congestive heart failure (CHF), and (8) lung cancer (LC), with the exposure
363 metrics adjusted into 6mDMA8.

364 **3.3.1 All-cause mortality**

365 A total of 23 studies were included into O₃ exposure-associated all-cause mortality
366 meta-analysis, pooling the overall risk into RR = 1.014 (95% CI: 1.009–1.019, I²: 97.8%)
367 with every 10-ppbV incremental exposure by 6mDMA8 as presented in **Figure 3**. Sub-
368 group meta-analysis by originally reported metrics concluded the significances of risks
369 vary across metrics, as high-concentration highlighted metrics like 6mDMA8 were of the
370 highest positive risk (RR = 1.022, 95% CI: 1.014–1.031) while the smoothed metric
371 ADA24 reported negative association (RR = 0.980, 95% CI: 0.960–1.001), as shown in
372 **Figure S1**. Grouped by study regions, significant discrepancies of the risk pattern was
373 found (**Figure S2**), as the studies in North America revealed positive associations as RR =
374 1.019 (95% CI: 1.014–1.024), while researches on European populations showed
375 reversed risks as RR = 0.910 (95% CI: 0.827–1.001), though not significant. The cross-
376 region divergences did not necessarily indicate differences in population vulnerability, as
377 (1) less and younger study population, (2) shorter follow-up durations, and (3) use of
378 smoothed exposure metrics for studies in Europe could all potentially obscure the
379 potential risk associations. Subgroup analysis manifested that high inter-study
380 heterogeneities originated from metric inconsistency, methodological reliability of
381 individual exposure assignment, and population variabilities, as encapsulated in **Table S3**.
382 The funnel plot was visually symmetrical (**Figure S3**), and studies reporting risks below
383 the pooled value were even slightly more, indicating no detected severe potential
384 publication biases.

385 No significant inter-gender differences were observed based on the limited studies
386 reporting gender-specific risk association strengths. Further subgroup analyses were
387 unfeasible due to the lack of reporting in the literature. Alternatively, grouped RRs were
388 estimated based on whether the original researches had adjusted the confounding effects
389 from ethnicity, body mass index (BMI), smoking history, lifestyle features, exposure
390 levels of PM_{2.5} and NO₂, and no inter-group divergences were observed (**Table S3**).

391 **3.3.2 Respiratory mortality**

392 Meta-analysis for O₃ exposure-associated all respiratory mortality includes 16
393 studies, pooling which gave the overall RR = 1.025 (95% CI: 1.010–1.040, I²: 83.9%) for
394 every 10-ppbV incremental O₃ exposure by 6mDMA8 (**Figure 4**). Based on sub-group
395 meta-analysis for different metrics (**Figure S4**), peak metrics showed more significant
396 increasing risks than ADA24, where most of the heterogeneities were from (I² = 87.0%).
397 Cross-metric divergences were generally higher than intra-metric discrepancies. Studies

398 on North America populations showed better homogeneity in positive risks (RR = 1.029,
399 95% CI: 1.011–1.047, $I^2 = 71.1\%$, **Figure S5**) than the European cohorts, pooling from
400 which the overall risks were congruously insignificant (RR = 0.941, 95% CI: 0.856–
401 1.036, $I^2 = 91.2\%$). For O₃-COPD mortality association, the pooled RR was 1.056 (95%
402 CI: 1.029–1.084, $I^2 = 94.5\%$) for 10-ppbV incremental O₃ exposure by 6mDMA8 from 7
403 studies. No apparent positive publication biases were detected for both respiratory and
404 COPD mortalities from the funnel plot (**Figure S3**).

405 **3.3.3 Cardiovascular mortality**

406 A total of 15 studies were included to pool the overall O₃ exposure-induced CVD
407 mortality risks as RR = 1.019 (95% CI: 1.004–1.035, $I^2 = 97.7\%$) for each 10-ppbV
408 additional O₃ exposure by 6mDMA8 (**Figure 5**). Given the fact that the lower bound of
409 uncertainty interval was so close to the null hypothesis (i.e. RR = 1), the positive risk
410 association found in this review could be controversial, and thus would require more
411 studies to support or refute the finding. Heterogeneities ($I^2 > 79.2\%$) were observed
412 through all 3 metric-grouped studies as presented in **Figure S6**. Positive risk associations
413 were found on 10 North American cohorts (RR = 1.036, 95% CI: 1.019–1.053) while
414 oppositely for 5 European cohorts (RR = 0.934, 95% CI: 0.865–1.008), as shown in
415 **Figure S7**. There was no need to be concerned with the publication bias, and no more
416 inter-group divergences were spotted except for grouping by exposure assignment
417 methodological credibility (**Table S3**). The pooled risk for the congestive heart failure-
418 induced mortality from 4 studies was RR = 1.074 (95% CI: 1.054–1.093, $I^2 = 85.8\%$)
419 with every 10-ppbV incremental O₃ exposure by 6mDMA8.

420 **3.3.4 Other mortality causes**

421 The other cause-specific mortality risks attributable to long-term O₃ exposure were
422 not statistically significant (**Figure 6**), as IHD mortality risk pooled from 10 studies was
423 RR = 1.012 (95% CI: 0.987–1.039, $I^2 = 98.7\%$), CEVD mortality risk pooled from 6
424 studies was RR = 0.993 (95% CI: 0.979–1.008, $I^2 = 80.6\%$), and LC mortality risk pooled
425 from 13 studies was RR = 0.966 (95% CI: 0.926–1.007, $I^2 = 84.2\%$). For all 8 studied
426 mortality causes, we also provided pooled risks by 3 more widely used metrics (i.e.
427 6mDA24, ADMA8, and ADA24) besides 6mDMA8, as listed in **Table 3** for reference.

428 **3.4 Study assessment**

429 All 25 studies included into our final meta-analysis were rated to be above “Fair” (14
430 as “Fair” and 11 as “Good”) by the Quality Assessment Tool for Observational Cohort
431 Studies, as listed in **Table S4**. All studies well met 10 out of 14 assessment items, while 9
432 studies did not sufficiently clarify the participant exclusion criteria; 2 re-analysis study
433 reports did not clearly state the O₃ exposures;^{41, 42} 2 studies were of relatively insufficient
434 follow-up durations (e.g. less than 5 years) to observe the outcomes resulting from long-
435 term exposure;^{45, 63} and 10 studies were of methodological deficiencies in individual
436 exposure assignment,^{38-46, 55} most of which were conducted before 2013 when data
437 assimilation techniques were not maturely developed to fuse observations with other full
438 spatial coverage products such as satellite-based remote sensing and atmospheric
439 mechanistic simulations. The satisfactory assessment results overall indicated
440 inconspicuous risks of bias, laying the reliable foundation for meta-analyses.

441 **Tables S5** displayed GRADE epidemiological evidence assessment results for each
442 mortality cause from all involved corresponding studies. In brief, the overall judgements
443 for all-cause, respiratory, cardiovascular, ischaemic heart disease, congestive heart
444 failure, and lung cancer mortality risks were “High”, while the rating for the rest 2 cause-
445 specific mortality risks (COPD and cerebrovascular diseases) were both “Moderate”.
446 Inconsistence of the risk directions (i.e. positive or negative associations) was the most
447 common reason for downgrading, except for the CHF-induced mortality. There were 6
448 studies having reported the O₃-mortality exposure-response trends to support the
449 additional risks, as an assessment upgrading item for the pooled RRs of all-cause,
450 respiratory and cardiovascular mortality. Cakmak et al. (2018) spotted higher RRs after
451 adjusting the confounder compared to the crude values,⁵³ which gave prominence to the
452 positive risk associations and thus correspondingly upgraded the rating for all-cause,
453 ischaemic heart disease, and lung cancer mortalities. No substantial positive publication
454 biases were found based on the collected evidences.

455 **3.5 Sensitivity analysis**

456 Leave-one-out sensitivity analyses showed stable risk estimates as summarised in
457 **Table S6**, except for the lung cancer mortality risks after eliminating Kazemiparkouhi et
458 al. (2019), the only study reporting positive risk association,⁵⁵ while the rest 11 studies
459 concluded insignificant risks or even protective effects. Since the metric harmonisation in
460 our study was an innovative attempt, we provided both metric-adjusted and unadjusted

461 crude results for reference as presented in **Table 3**. The crude results were pooled from
462 the originally reported relative risk values only unified into per 10-ppbV incremental
463 exposure, without being transformed into any metrics for congruity. Along with the meta-
464 analyses on all qualified studies, the relative risks were also pooled by keeping only one
465 latest study with the largest population for each separate cohort, as summarised in **Table**
466 **S7**. Under this circumstance, the pooled unit incremental mortality risks with every 10-
467 ppbV incremental O₃ exposure by 6mMDA8 metric were RR = 1.008 (95% CI: 1.006–
468 1.009, I² = 82.6%) for all causes, RR = 1.034 (95% CI: 1.017–1.050, I² = 81.7%) for all
469 respiratory diseases, RR = 1.060 (95% CI: 1.040–1.080, I² = 90.2%) for COPD, RR =
470 1.032 (95% CI: 1.010–1.055, I² = 98.2%) for all cardiovascular diseases, RR = 1.008
471 (95% CI: 0.973–1.045, I² = 99.2%) for ischaemic heart disease, and RR = 0.966 (95% CI:
472 0.931–1.002, I² = 83.8%) for lung cancer. Studies for mortality risks of cerebrovascular
473 diseases and congestive heart failure were respectively conducted on different cohorts,
474 and hence such supplementary analysis was unnecessary.

475

476 **4. DISCUSSION**

477 **4.1 Improvements as an updated review**

478 This work improves on 2 previous high-quality reviews^{15, 16} by covering up-to-date
479 peer-reviewed studies, and expanding the O₃-exposure associated causes of mortality into
480 wider range of categories. It is the first systematic review of the association between
481 long-term O₃ exposure and cause-specific mortality highlighting the issue of inconsistent
482 use of exposure metrics to our best knowledge. Since tropospheric O₃ is a photochemical
483 pollutant which largely depends on solar radiation, the surface O₃ concentrations can vary
484 drastically between day and night, as well as warmer and cooler seasons. We pointed out
485 that a 10-ppbV increase in annual daily 24-hour average concentration (ADA24) is more
486 constrained in magnitude than a 10-ppbV increase in warm-season daily 8-hour
487 maximum average concentration (6mDMA8) owing to the wider variability in the range
488 of the latter metric. Taking the observations by TOAR and CNEMC *in situ* monitoring
489 networks during 1990-2019 as an example, the surface O₃ concentrations were 27.6 ± 6.1
490 (IQR: 24.1–31.0) ppbV by ADA24, while correspondingly 53.1 ± 10.6 (IQR: 47.7–61.4)
491 ppbV by 6mDMA8, which indicated a 10-ppbV change fell below the IQR by the
492 6mDMA8, but could exceed the IQR using the ADA24 metric. This was why we believe

493 adjusting the exposure metrics was necessary for O₃ exposure-attributable health risk
494 meta-analysis.

495 We also put forward a feasible approach to mutually convert the O₃ exposure
496 concentrations and corresponding risk strengths in various metrics by non-intercept linear
497 projections following the operational suggestions from EPA,³² but update the linear
498 conversion factors based on global *in situ* surface O₃ observations during 1990-2019. The
499 methodological innovation took advantage of multi-dimensional information from the
500 original studies, which could inspire further observation collections and researches for
501 corroborations and improvements.

502 **4.2 Metric relevant issues**

503 Although linear coefficients were applied onto the cross-metric conversions,
504 irreducible noises still existed given the high root mean squared errors (RMSE) as shown
505 in **Figure 2**, which exposed the limitation of risk strength adjustment into the same
506 exposure metric by simple linear conversion, as the actual cross-metric relationships
507 could be way more complicated. However, there was no other way but using the linear
508 conversion coefficients as surrogates to unify the RRs by different metric reported in
509 original studies, and thus to avoid uncertainties brought by the conversion of metrics,
510 using a promissory consistent exposure metric or estimating the unit excess RRs in
511 multiple metrics would be highly advocated in future long-term O₃-exposure
512 epidemiology studies.

513 Such linear conversion of risk associations could be validated by Kazemiparkouhi et
514 al. (2020),⁵⁵ where multiple metrics were applied to estimate the mortality risks. For
515 COPD mortality, the RR was 1.072 (95% CI: 1.067–1.077) by 6mDMA1 for every 10-
516 ppbV additional exposure; and after converting into 6mDMA8 metric using the linear
517 coefficient 0.831 (**Figure 2**), the estimated RR was 1.087 (95% CI: 1.081–1.093), close
518 to the literature reported 1.084 (95% CI: 1.079–1.089),⁵⁵ which justified our linear
519 conversion method. Converting Cross-metric linear conversions would not change the
520 risk association direction, but using different exposure metrics when estimating the O₃-
521 exposure attributable mortality risks could potentially cause discrepancies. For an
522 instance, Kazemiparkouhi et al. (2020) concluded excess hazards of long-term O₃
523 exposure on all-cause mortality using 6mDMA1 and 6mDMA8 as quantitative metrics,
524 but 6mDA24 led to a specious prevention effect (RR = 0.990, 95% CI: 0.988–0.991),
525 which should be attributed to the existence of a theoretical exposure safety level for O₃
526 below which no negative health effects should occur. Under this circumstance, lower-
527 level metrics (e.g. ADA24) by averaging the peak O₃ exposures might obscure the

528 effective doses above the threshold, and also reduce the signal-to-noise ratios, so that
529 were of lower credibility in recognising hazardous population exposures than higher-level
530 metrics (e.g. 6mDMA8).

531 Data mining techniques were able to realise high-accuracy predictions of surface O₃
532 concentrations, but errors were never avoidable. Carey et al. (2013) used a basic IDW
533 spatial interpolation approach to obtain the surface O₃ concentrations where the R² were
534 0.24–0.76,⁴⁵ while years later Di et al. (2017) applied an ensemble learning approach,
535 achieving R² = 0.80, RMSE = 2.91 ppbV.⁵¹ Carey et al. (2013) reported the IQR of O₃
536 exposure concentrations as 3.0 ppbV, which was comparable to the RMSE of Di et al.
537 (2017).⁵¹ Besides, lower R² could be accompanied with higher prediction errors, which
538 might have concealed the highest and lowest quartiles, and led to failures in
539 distinguishing the population-level exposures. This concern had been reflected in our
540 subgroup meta-analysis by exposure metrics, that lower-level metrics were more inclined
541 to report insignificant risks, which also cast sceptics on the reliability of studies covering
542 narrow exposure variabilities. We therefore are in favour of the Lancet suggestions to use
543 peak metrics to quantify the long-term O₃ exposure such as 6mDMA8, and also speak
544 highly of the state-of-the-art data techniques to reduce errors in O₃ concentration
545 prediction, so as to make a distinction between the high- and low-exposure populations.

546 **4.3 Pathogenesis supports**

547 Atkinson et al. (2016) concluded insignificant pooled risks for long-term O₃
548 exposure associated all-cause and respiratory mortality,¹⁶ which contradicted our results.
549 It should mainly be ascribed to the heterogeneity between the more recent studies and
550 earlier ones. The majority of studies collected in Atkinson et al. (2016) applied primitive
551 statistical methods (i.e. nearest neighbourhood matching, IDW and ordinary kriging
552 interpolation) for individual exposure assignment, which might have weakened the
553 individual-level exposure distinguishment. In addition, some studies using ADA24 as the
554 exposure metric could have also obscured the significance of associations.^{43, 45, 46} In
555 contrast, studies after 2016 more frequently applied advanced numerical simulation
556 models and data assimilation techniques to increase the precision of population exposure
557 assessment; and most of them used 6mDMA8 metric to foreground the high exposures.^{50,}
558 ^{52, 53, 55-57} These recent studies stuck out the significant O₃-mortality associations.

559 From another aspect, pathological mechanisms had been at least partially ascertained
560 by laboratorial experiments. The inhaled O₃ could constrict the muscles in the airways
561 leading to shortness of breath, and damage the lining with inflammation.⁶⁴ Long-term O₃

562 exposure could increase the oxidative stress in the cardiovascular system,⁶⁵ and cause
563 progressive thickening of the carotid arteries to restrict cerebral blood supply.⁶⁶
564 Additionally, strong associations had already been found between short-term O₃ exposure
565 and a variety of cardiopulmonary symptoms as reported by a number of observational
566 epidemiological studies,⁶ which also supported the long-term exposure effects, as it was
567 unreasonable to presume no incremental risks by long-term exposure given the verified
568 significant short-term effects. We thus were inclined to approve of the opinion that long-
569 term O₃ exposure would increase mortality risks in agreement with GBD report.²⁰

570 To alleviate the population health loss resulting from O₃ exposure, the U.S. EPA
571 appealed for optimisations in real-time accessibility of air quality index, with which
572 residents could be able to avoid unnecessary high pollution exposure
573 (<https://www.epa.gov/ground-level-ozone-pollution/health-effects-ozone-pollution>).
574 Appropriate diets and supplements including carotenoids, vitamin D and vitamin E were
575 recognised to be preventive against air pollution induced respiratory damages, which was
576 a practical protective measure for the vulnerable.⁶⁷

577 **4.4 Concentration-response relationship**

578 Few studies had examined the concentration-response curves between long-term O₃
579 exposure and mortality, and thus the threshold exposure level (also known as theoretical
580 minimum risk exposure level, TMREL) below which no adverse health effects would be
581 assumed to occur was still controversial. For all-cause mortality, Di et al. (2017) reported
582 a safe exposure level as 30 ppbV by 6mDA24 metric (approximately as 49.9 ppbV by
583 6mDMA8),⁵¹ while Shi et al. (2022) suggested a lower level as 40 ppbV by 6mDMA8,
584 both estimated from the Medicare beneficiary cohort.⁵⁸ For respiratory mortality, Jerrett
585 et al. (2009) tested the concentration-response relationships and estimated the threshold
586 level as 60 ppbV by 6mDMA1 (49.9 ppbV by 6mDMA8),⁴⁰ while Lim et al. (2019)
587 failed to identify a significant threshold level.⁵⁶ For cardiovascular mortality, Lim et al.
588 (2019) showed no apparent health hazards below 45 ppbV by 6mDMA8,⁵⁶ and Paul et al.
589 (2020) prescribed a threshold level around 35 ppbV by 6mDMA8 metric for diabetic
590 patients.⁵⁷ These evidence-based threshold exposure levels were all no higher than the
591 current standards, as 70 ppbV for daily maximum 8-hour exposure under NAAQS (The
592 National Ambient Air Quality Standards regulated by the U.S. EPA)⁶⁸ and 50 ppbV by
593 warm-season DMA8 under WHO global air quality guidelines.⁶⁹ However, whether the
594 standard guidelines should be revised to be more strictly would require more further
595 studies.

596 To synthesise epidemiological evidences, Burnett et al. (2014) developed an
597 integrated exposure-response (IER) function-based curve-fitting method to pool the risk
598 associations from multiple studies.³⁷ We attempted to construct the IER for long-term O₃
599 exposure associated mortalities in this review, with statistically reproduced exposure
600 levels to enhance the curve fitting, as illustrated in [Supplementary Texts S1-S3](#). The
601 exposure imputing had revealed high reliability, but the high uncertainties of the IER
602 curves could still not be addressed, which should be attributed to the limited effective
603 epidemiological evidences. Empirically, this approach would require sufficient studies to
604 cover a wide range of exposure levels, which had been frequently adopted for particulate
605 matter exposure researches,⁷⁰⁻⁷² but seldomly used for O₃-health studies.²⁰ The main
606 probable reason might be that the population long-term O₃ exposure levels would not be
607 as comparably distinguishable to the particulate matters. In addition, a reasonable
608 prescribed TMREL would be necessary to establish the IER curves,³⁷ and hence the
609 indeterminacy of the threshold level could exacerbate the uncertainties in the estimated
610 concentration-response relationships. Therefore, more relevant studies on long-term O₃
611 exposure associated risks are urgently appealed for, based on which discussions,
612 optimisations, or corrections on our enhanced exposure-response curve-fitting
613 methodologies, are encouraged.

614 **4.5 Hierarchical classification of diseases**

615 The causes of mortalities analysed in our study followed hierarchical subordinate
616 relationships, as the all-cause mortality consisted of cardiovascular diseases, respiratory
617 diseases, cancer and other causes; chronic obstructive pulmonary disease belonged to
618 respiratory category; and ischaemic heart disease, stroke, congestive heart failure and
619 other cerebrovascular diseases all subordinated to cardiovascular symptoms. On this
620 occasion, estimating all O₃-exposure induced mortalities could follow a bottom-up
621 scheme by adding up subgroups of diseases. However, for the historical O₃-associated
622 mortalities, GBD attributed all O₃-associated mortalities onto COPD-induced premature
623 deaths,²⁰ which we thought were of spaces for further explorations. Long-term O₃
624 exposure had shown significant association with excess cardiovascular mortalities, and
625 thus we should update the mortality estimations in further studies by including CVD
626 altogether into consideration.

627 **4.6 Application in mortality estimations**

628 The widest applications of the estimated risk association strengths were to project
629 how many people would be affected by long-term ambient O₃ exposure. For example,
630 Malley et al. (2017) estimated 1.23 (95% UI: 0.85–1.62) million respiratory deaths
631 attributable to O₃ exposure in 2010,⁷³ using the risk strength by Turner et al. (2016) as
632 HR = 1.12 (95% UI: 1.08–1.16).⁵⁰ This estimation was much higher than the 2019 GBD
633 report: 0.31 (95% UI: 0.15–0.49) million, as had been highlighted in another recent
634 study,²⁵ which should be attributed to the use of high HR value among all included
635 studies. We had also found some other studies using one singular HR value for
636 population risk estimations,^{17, 74-77} but we would still encourage further relevant studies to
637 consider multi-study pooled RRs, which could effectively reduce the potential biases
638 from a single study. The adaptability of the pooled RRs could be verified from the
639 coverage of exposure levels, as the 25 studies identified in our review had embraced a
640 wide range of exposure concentrations ([Supplementary Text S1](#)) to encompass the global
641 surface O₃ variability.²⁵ On the other hand, the leave-one-out sensitivity analyses (Table
642 S6) had revealed the robustness of the meta-analysis results when including sufficient
643 numbers of studies, which was a circumstantial reflection for the representativeness of
644 the synthesised risk association strengths. The annual GBD reports were also based on
645 the generalisability presumption of the synthesised epidemiological evidences, but
646 cohort-based researches in the unstudied regions are always appealed for to provide more
647 convincing discoveries.

648 **4.7 Limitations**

649 Although the total number of studied participants for risk pooling was adequately
650 high to ensure the statistical power, the cohort-based O₃-health studies were factually rare
651 according to our literature search, and thus long-term follow-up studies are urgently
652 encouraged. Additionally, current literatures seldomly reported grouped RRs, which
653 made meta-analyses by sub-categories (like gender, age, socio-economic status, smoking
654 and alcohol history, etc.) unfeasible. Scarcity of credible evidences also restricted the
655 effects of conventional approaches to construct exposure-response curves, and our
656 methodological innovation would require further relevant studies for substantiation. The
657 cross-metric linear conversion factors were estimated relying on observations from
658 available sites, which however might not be sufficiently representative of the global
659 residential areas, as observational sites in India, Africa, and Latin America were still
660 sparse. With ever-increasing popularisation of the *in situ* monitoring networks, the cross-

661 metric conversion factors might need calibration with more comprehensive observations,
662 so that the pooled RRs should also be updated accordingly.

663 **4.8 Further study suggestions**

664 We suggest that further environmental epidemiology studies, especially long-term O₃
665 exposure related researches, clearly report i) the methodologies to obtain ambient O₃
666 concentrations, the spatiotemporal resolution, and prediction accuracy of the database; ii)
667 the exposure metrics used for risk estimation; and iii) the statistical distribution of the O₃
668 exposure concentrations. The data-oriented methodologies to accomplish full spatial
669 coverage ambient air O₃ concentrations for individual-level exposure assignment should
670 be transparent as the construction credibility of air pollution concentration database
671 should also be rigorously assessed, which were the foundation of epidemiological follow-
672 up studies. We would advocate the report of exposure metrics in future O₃-health studies
673 so as to avoid confusions when comparing the risks with literature and conducting meta-
674 regression; and according to the recent consensus, warm-season average (6mDMA8)
675 shall be preferred as epidemiological study metrics.¹⁹ We recommend future studies
676 estimate risks with multiple O₃ metrics for reference; and describing the statistical
677 distribution of the O₃ exposure levels is another suggested element to assess the
678 reliability of risk estimation models, which can also be useful in exposure-response
679 tendency exploration. We also propose future cohort studies estimate subgroup-specific
680 RRs which can be conducive to identify the vulnerable populations.

681 Our review highlights a deficiency existing in current environmental health research
682 literatures, that studies on long-term O₃ exposure health effects are still rather rare
683 compared to particulate matter-based studies.⁷⁸ Also, the meta-analysis results might be
684 geographically-biased, since large-scale O₃ exposure health risk studies till 2022 did not
685 cover Asia, Africa or Latin America regions. However, there are some thriving cohorts
686 such as the Multi-Country Multi-City (MCC) Collaborative Research Network covering
687 over 22 countries or regions,⁷⁹ and the China Kadoorie Biobank (CKB) enrolling over 0.5
688 million people,⁸⁰ working on environmental exposure projects. We are optimistic that
689 more research will come out to fill in the literature gap of multi-region population-based
690 studies.

691

692 **5. CONCLUSION**

693 Our state-of-the-science systematic review has summarised cohort studies exploring
694 the associations between long-term ambient O₃ exposure and multi-cause mortality risks.
695 Current studies support O₃-exposure attributable additional mortalities caused from all
696 causes, respiratory diseases, chronic obstructive pulmonary disease, cardiovascular
697 diseases, and congestive heart failure, but no significant mortality risks are found for
698 ischaemic heart diseases, all-type cerebrovascular diseases, and lung cancer. Exposure
699 metrics are crucial for health risk estimations of long-term O₃ exposure and meta-analysis
700 to pool the multi-study risks, for which we develop a linear conversion approach to
701 harmonise the different metrics. Further researches on long-term O₃ observations and
702 exposure-induced mortalities are encouraged to corroborate or contradict our linear
703 conversion factors and meta-analysis results by providing more solid evidences, so as to
704 strengthen the O₃-health literatures.

705

706 **Competing Interest Statement**

707 All authors declare: no support from any organisation for the submitted work; no
708 financial relationships with any organisations that might have an interest in the submitted
709 work in the previous three years; and no other relationships or activities that could appear
710 to have influenced the submitted work.

711 **Author Contributions**

712 ATA and YG conceived the idea for the review; HZS, CL and PY performed the
713 literature search; HZS and PY conducted statistical analyses; HZS, ATA, YG, PY, SH,
714 JM, HS and LY contributed to discussions; HZS wrote the article; and MW examined the
715 languages. HZS is the guarantor who accepted the full responsibility for the finished
716 article, owned full access to all relevant data, and controlled the decision to publish. The
717 two joint corresponding authors, ATA and YG, attests that all listed authors meet
718 authorship criteria and that no others meeting the criteria have been omitted. The
719 guarantor, HZS, affirms that the manuscript is an honest, accurate, and transparent
720 account of the study being reported, and no important aspects of the study have been
721 omitted. No ethical approval is needed for a systematic review and meta-analysis.

722 **Acknowledgement**

723 This study is funded by UK Natural Environment Research Council (NERC), UK
724 National Centre for Atmospheric Science (NCAS), Australian Research Council
725 (DP210102076) and Australian National Health and Medical Research Council
726 (APP2000581). HZS, MW, and SH receive funding from Engineering and Physical
727 Sciences Research Council (EPSRC) via the UK Research and Innovation (UKRI) Centre
728 for Doctoral Training in Application of Artificial Intelligence to the study of
729 Environmental Risks (AI4ER, EP/S022961/1). ATA acknowledges funding from NERC
730 (NE/P016383/1) and through the Met Office UKRI Clean Air Programme. YG is
731 supported by a Career Development Fellowship of the Australian National Health and
732 Medical Research Council (APP1163693). All contents in this study are solely the
733 responsibility of the grantees and do not represent the official views of the supporting
734 agencies.

735 Special appreciations to Dr Xiao Lu (School of Atmospheric Sciences, Sun Yat-sen
736 University) for his insightful discussion on the quality control of TOAR products, Dr
737 Lihua Shi (Rollins School of Public Health, Emory University) for her supplementary
738 information on Medicare beneficiary cohort information, and 4 anonymous reviewers
739 together with the editor for their meticulous efforts in improving the manuscript.

740 **Data Availability**

741 The surface O₃ observations are archived in the Tropospheric Ozone Assessment
742 Report (TOAR, <https://b2share.fz-juelich.de/communities/TOAR>) repository and China
743 National Environmental Monitoring Centre (CNEMC, <http://www.cnemc.cn/en/>)
744 repository, which are accessible to the public. The cohort-based long-term O₃ exposure-
745 associated cause-specific mortality risks are all available in the main text or
746 supplementary materials of the selected studies.

747 **Supplementary Information**

748 Further detailed information can be found in the **Supplementary Materials** (PDF)
749 consisting of 25 pages with 5 sections of texts as “imputation procedures for exposure
750 distribution” (S1), “enhanced integrated exposure-response curve-fitting” (S2),
751 “demonstrative procedures of enhanced exposure-response trend curve-fitting” (S3),
752 “undefined metric imputation” (S4), and “interpretation and procedure of cross-metric
753 linear conversion” (S5), together with 6 tables and 7 figures to strengthen the results and
754 discussions presented in the main text. A **PRISMA Checklist** (PDF) was provided to
755 verify the integrity of this study.

756

TABLES

Table 1 Summary of cohort characteristics included for meta-analysis.

Study	Cohort	Country	Follow-up Duration	Population Type	Sample Size	Sex	Age	Key Confounding Adjustment	Mortality Causes
Abbey et al. 1999 ³⁸	AHS	USA	1977-1992	Occupational	6,182	FM	27-95	age, sex, BMI, smoking, individual demographic features ^l , lifestyle features ⁺ , medical history	AC, RESP, LC
Lipfert et al. 2006 ³⁹	WU-EPRI	USA	1976-1996	General	67,108	M	51 (12) [§]	age, ethnicity, BMI, smoking, traffic density, NO ₂ , CO	AC
Jerrett et al. 2009 ⁴⁰	ACS CPS II	USA	1977-2000	General	448,850	FM		age, sex, ethnicity, BMI, smoking, individual demographic features, lifestyle features, PM _{2.5}	AC, RESP, CVD, IHD
Krewski et al. 2009 ⁴¹	ACS CPS II	USA	1982-2000	General	488,370	FM	≥ 30	age, sex, ethnicity, BMI, smoking, individual demographic features, lifestyle features, PM _{2.5}	AC, IHD, LC
Smith et al. 2009 ⁴²	ACS CPS II	USA	1982-2000	General	352,242	FM		age, sex, ethnicity, BMI, smoking, lifestyle features, medical treatment	AC, RESP, CVD
Lipsett et al. 2011 ⁴³	CTS	USA	1998-2005	Occupational	124,614	F	≥ 20	age, sex, ethnicity, BMI, smoking, lifestyle features, medical history	AC, RESP, CVD, IHD, CEVD, LC
Zanobetti et al. 2011 ⁴⁴	Medicare	USA	1985-2006	General	8,894,473	FM	≥ 65	age, sex, ethnicity, medical history	COPD, CHF
Carey et al. 2013 ⁴⁵	CPRD	UK	2003-2007	General	824,654	FM	40-89	age, sex, BMI, smoking, individual demographic features	AC, RESP, LC
Jerrett et al. 2013 ⁴⁶	ACS CPS II	USA	1982-2000	General	73,711	FM	57 (11)	age, sex, smoking, individual demographic features, lifestyle features	AC, RESP, CVD, IHD, LC
Bentayeb et al. 2015 ⁴⁷	GAZEL	France	1989-2013	Occupational	20,327	FM	44 (4)	age, sex, BMI, smoking, individual demographic features, lifestyle features	AC, RESP, CVD
Crouse et al. 2015 ⁴⁸	CANCHEC	Canada	1991-2006	General	2,521,525	FM	≥ 25	age, sex, individual and area-level demographic features, PM _{2.5} , NO ₂	AC, RESP, COPD, CVD, IHD, CEVD, LC
Tonne et al. 2016 ⁴⁹	MINAP	UK	2003-2010	MI Survivors [†]	18,138	FM	68 (14)	age, sex, ethnicity, smoking, medical history, area-level demographic features	AC
Turner et al. 2016 ⁵⁰	ACS CPS II	USA	1982-2004	General	669,046	FM	≥ 30	age, sex, BMI, smoking, individual and area-level demographic features, PM _{2.5} , NO ₂	AC, RESP, COPD, CVD, CHF, IHD, CEVD
Di et al. 2017 ⁵¹	Medicare	USA	2000-2012	General	60,925,443	FM	≥ 65	age, sex, ethnicity, BMI, smoking, individual and area-level demographic features, meteorological features, PM _{2.5}	AC
Weichenthal et al. 2017 ⁵²	CANCHEC	Canada	2001-2011	General	2,448,500	FM	25-89	age, sex, ethnicity, individual and area-level demographic features	AC, RESP, CVD
Cakmak et al. 2018 ⁵³	CANCHEC	Canada	1991-2011	General	2,291,250	FM	≥ 25	age, sex, individual demographic features, PM _{2.5}	AC, COPD, IHD, LC
Hvidtfeldt et al. 2019 ⁵⁴	DDCH	Denmark	1993-1997	General	49,596	FM	50-64	age, sex, BMI, smoking, individual and area-level demographic features, noise	AC, RESP, CVD
Kazemiparkouhi et al. 2019 ⁵⁵	Medicare	USA	2000-2008	General	22,159,190	FM	≥ 65	age, sex, ethnicity, area-level demographic features, PM _{2.5}	AC, RESP, COPD, CVD, IHD, CHF, CEVD, LC

Study	Cohort	Country	Follow-up Duration	Population Type	Sample Size	Sex	Age	Key Confounding Adjustment	Mortality Causes
Lim et al. 2019 ⁵⁶	NIH-AARP	USA	1995-2011	General	548,780	FM	50-71	age, sex, ethnicity, BMI, smoking, individual demographic features, PM _{2.5} , NO ₂ , daily maximum temperature	AC, RESP, COPD, CVD, IHD, CHF, CEVD, LC
Paul et al. 2020 ⁵⁷	ONPHEC	Canada	1996-2015	Diabetes	452,590	FM	35-85	age, sex, area-level demographic features	CVD
Shi et al. 2021 ⁵⁸	Medicare	USA	2001-2017	General	44,684,756	FM	≥ 65	age, sex, ethnicity, BMI, smoking, individual and area-level demographic features, lifestyle features, PM _{2.5} , NO ₂ , medical history	AC
Strak et al. 2021 ⁵⁹	ELAPSE	6 countries [†]	1985-2015	General	325,367	FM	49 (13)	age, sex, ethnicity, BMI, smoking, individual and area-level demographic features, PM _{2.5} , NO ₂ , BC	AC, RESP, COPD, CVD, IHD, CEVD
Yazdi et al. 2021 ⁶⁰	Medicare	USA	2000-2016	General	44,430,747	FM	≥ 65	age, sex, ethnicity, BMI, smoking, individual and area-level demographic features, lifestyle features, PM _{2.5} , NO ₂ , medical history	AC
Bauwelinck et al. 2022 ⁶¹	BC2001	Belgium	2001-2011	General	5,474,470	FM	≥ 30	age, sex, individual and area-level demographic features, PM _{2.5} , NO ₂	AC, RESP, CVD, LC
Stafoggia et al. 2022 ⁶²	ELAPSE	7 countries [‡]	2000-2017	General	28,153,138	FM	≥ 30	age, sex, ethnicity, BMI, smoking, individual and area-level demographic features, PM _{2.5} , NO ₂ , BC	AC, RESP, CVD, LC

Cohort abbreviations: AHSMOG, *Adventist Health Study of Smog*; WU-EPRI, *Washington University–Electric Power Research Institute*; ACS CPS, *American Cancer Society Cancer Prevention Study*; CTS, *California Teacher Study*; CPRD, *Clinical Practice Research Datalink*; GAZEL, *GAZ de France and Électricité*; CANCHEC, *Canadian Census Health and Environment Cohort*; MINAP, *National Audit of Myocardial Infarction Project*; DDCH, *Danish Diet, Cancer and Health*; NIH-AARP, *National Institute of Health, American Association of Retired Persons*; ONPHEC, *Ontario Population Health and Environment Cohort*; BC2001, *Belgian 2001 Census*.

[¶] Demographic features included marital status, education attainment, employment status and occupational class, aboriginal ancestry, visible minority ethnicities, immigrant status and residence location (urban or rural), income level and socioeconomic status (SES), and regional population density. Different studies adjusted various combinations of demographic features.

[±] Lifestyle features included consumptions of alcohol, dietary fat, vegetables, fruits (dietary fibre), and vitamins, together with physical activity frequency. Different studies adjusted various combinations of lifestyle features.

[§] Population ages were reported by mean with standard deviation (in bracket).

^{*} MI, Myocardial Infarction.

[†] Sweden, Denmark, France, Netherland, Germany and Austria.

[‡] Belgium, Denmark, England, Netherland, Norway, Switzerland and Italy.

Table 2 Data sources and statistical methods of O₃ exposure assignment.

Methodological ratings were based on spatial interpolation and multi-data assimilation approaches. Spatial resolutions, exposure metrics, and levels of incremental risk ratio were also listed.

Study	Data Sources	Methods	Resolution	Rating	Metrics	Level of incremental risk ratio
Abbey et al. 1999 ³⁸	monitoring station observations	IDW interpolation	NR [¶]	Low	ADMA8	12.03 ppbV
Lipfert et al. 2006 ³⁹	monitoring station observations	nearest matching (assumed) [†]	NR	Low	ADMA1	40 ppbV
Jerrett et al. 2009 ⁴⁰	monitoring station observations	nearest matching (assumed)	NR	Low	6mDMA1	10 ppbV
Krewski et al. 2009 ⁴¹	monitoring station observations	ordinary kriging interpolation	NR	Low	6mDMA1	10 ppbV
Smith et al. 2009 ⁴²	monitoring station observations	nearest matching (assumed)	NR	Low	6mDMA1	1 µg/m ³
Lipsett et al. 2011 ⁴³	monitoring station observations	IDW interpolation	250 m	Low	ADA24	22.96 ppbV
Zanobetti et al. 2011 ⁴⁴	monitoring station observations	nearest matching (assumed)	NR	Low	6mDMA8	5 ppbV
Carey et al. 2013 ⁴⁵	monitoring station observations	interpolation (IDW assumed)	1 km	Low	ADA24	3.0 µg/m ³
Jerrett et al. 2013 ⁴⁶	monitoring station observations	IDW interpolation	NA	Low	ADA24	24.1782 ppbV
Bentayeb et al. 2015 ⁴⁷	monitoring station observations, model simulation, other auxiliary predictors	universal kriging embedded land use regression	2 km	Good	6mDMA8	12.3 µg/m ³
Crouse et al. 2015 ⁴⁸	monitoring station observations, model simulation	linear data assimilation	21 km	Good	6mDMA8	9.5 ppbV
Tonne et al. 2016 ⁴⁹	KCLurban air dispersion model simulation	NA	20 m	Moderate	ADA24	5.3 µg/m ³
Turner et al. 2016 ⁵⁰	monitoring station observations, CMAQ model simulation	hierarchical Bayesian space-time data assimilation	12 km	High	ADMA8 6mDMA8	10 ppbV
Di et al. 2017 ⁵¹	monitoring station observations, model simulation, satellite remote sensing observations, other auxiliary predictors	ensemble machine learning	1 km	High	6mDMA8	10 ppbV
Weichenthal et al. 2017 ⁵²	monitoring station observations, model simulation	linear data assimilation	21 km	Good	6mDMA8	10.503 ppbV
Cakmak et al. 2018 ⁵³	monitoring station observations, model simulation	linear data assimilation	21 km	Good	6mDMA8	10 ppbV
Hvidtfeldt et al. 2019 ⁵⁴	AirGIS dispersion model simulation	NA	1 km	Moderate	ADA24	10 µg/m ³
Kazemiparkouhi et al. 2019 ⁵⁵	monitoring station observations	nearest matching (assumed)	6 km	Low	6mDMA1 6mDMA8 6mDA24	10 ppbV
Lim et al. 2019 ⁵⁶	monitoring station observations, CMAQ model simulation	Bayesian space-time downscaling	12 km	High	6mDMA8	10 ppbV
Paul et al. 2020 ⁵⁷	monitoring station observations, model simulation	linear data assimilation	21 km	Good	6mDMA8	6.4 ppbV
Shi et al. 2021 ⁵⁸	monitoring station observations, model simulation, satellite remote sensing observations, other auxiliary predictors	ensemble machine learning	1 km	High	6mDMA8	10 ppbV
Strak et al. 2021 ⁵⁹	monitoring station observations, model simulation, satellite remote sensing observations, other auxiliary predictors	universal kriging embedded land use regression	100 m	High	6mDMA8	10 µg/m ³

Yazdi et al. 2021 ⁶⁰	monitoring station observations, model simulation, satellite remote sensing observations, other auxiliary predictors	ensemble machine learning	1 km	High	6mDMA8	1 ppbV
Bauwelinck et al. 2022 ⁶¹	monitoring station observations, model simulation, satellite remote sensing observations, other auxiliary predictors	land use regression	100 m	High	6mDMA8	10 µg/m ³
Stafoggia et al. 2022 ⁶²	monitoring station observations, model simulation, satellite remote sensing observations, other auxiliary predictors	universal kriging embedded land use regression	100 m	High	6mDMA8	10 µg/m ³

⁰ NR, not reported.

[†] The statistical methods were not clearly stated in literatures, and thus the most basic method was assumed. The nearest neighbourhood matching shall be the simplest way to assign spatially sparse observations onto cohort participants, and the inverse distance weighting (IDW) is the simplest spatial interpolation approach.

[‡] NA, not applicable. The chemical transport model simulations were directly used for individual exposure assignment without further statistical processing.

Table 3 Pooled RRs for long-term 10-ppbV incremental O₃-exposure attributable multi-cause mortalities by 4 most widely used metrics and crude risks without metric harmonisation.

Mortality causes	6mDMA8	6mDA24	ADMA8	ADA24	Crude
All causes (<i>n</i> = 23)	1.014 (1.009, 1.019)	1.023 (1.014, 1.032)	1.016 (1.010, 1.022)	1.027 (1.017, 1.037)	1.017 (1.011, 1.023)
Respiratory diseases (<i>n</i> = 16)	1.025 (1.010, 1.040)	1.042 (1.016, 1.069)	1.029 (1.011, 1.047)	1.049 (1.019, 1.081)	1.031 (1.017, 1.046)
Chronic obstructive pulmonary disease (<i>n</i> = 7)	1.056 (1.029, 1.084)	1.098 (1.050, 1.149)	1.066 (1.034, 1.098)	1.116 (1.058, 1.176)	1.055 (1.032, 1.078)
Cardiovascular diseases (<i>n</i> = 15)	1.019 (1.004, 1.035)	1.033 (1.006, 1.061)	1.022 (1.004, 1.041)	1.038 (1.007, 1.071)	1.024 (1.009, 1.038)
Ischaemic heart disease (<i>n</i> = 10)	1.012 (0.987, 1.039)	1.021 (0.977, 1.067)	1.014 (0.984, 1.045)	1.024 (0.973, 1.078)	1.017 (0.994, 1.041)
Congestive heart failure (<i>n</i> = 4)	1.074 (1.054, 1.093)	1.130 (1.094, 1.168)	1.086 (1.063, 1.110)	1.155 (1.110, 1.198)	1.083 (1.059, 1.107)
Cerebrovascular diseases (<i>n</i> = 6)	0.993 (0.979, 1.008)	0.988 (0.964, 1.013)	0.992 (0.976, 1.009)	0.986 (0.958, 1.015)	0.992 (0.979, 1.006)
Lung cancer (<i>n</i> = 12)	0.966 (0.926, 1.007)	0.943 (0.878, 1.012)	0.960 (0.915, 1.008)	0.933 (0.859, 1.014)	0.960 (0.909, 1.013)

FIGURES

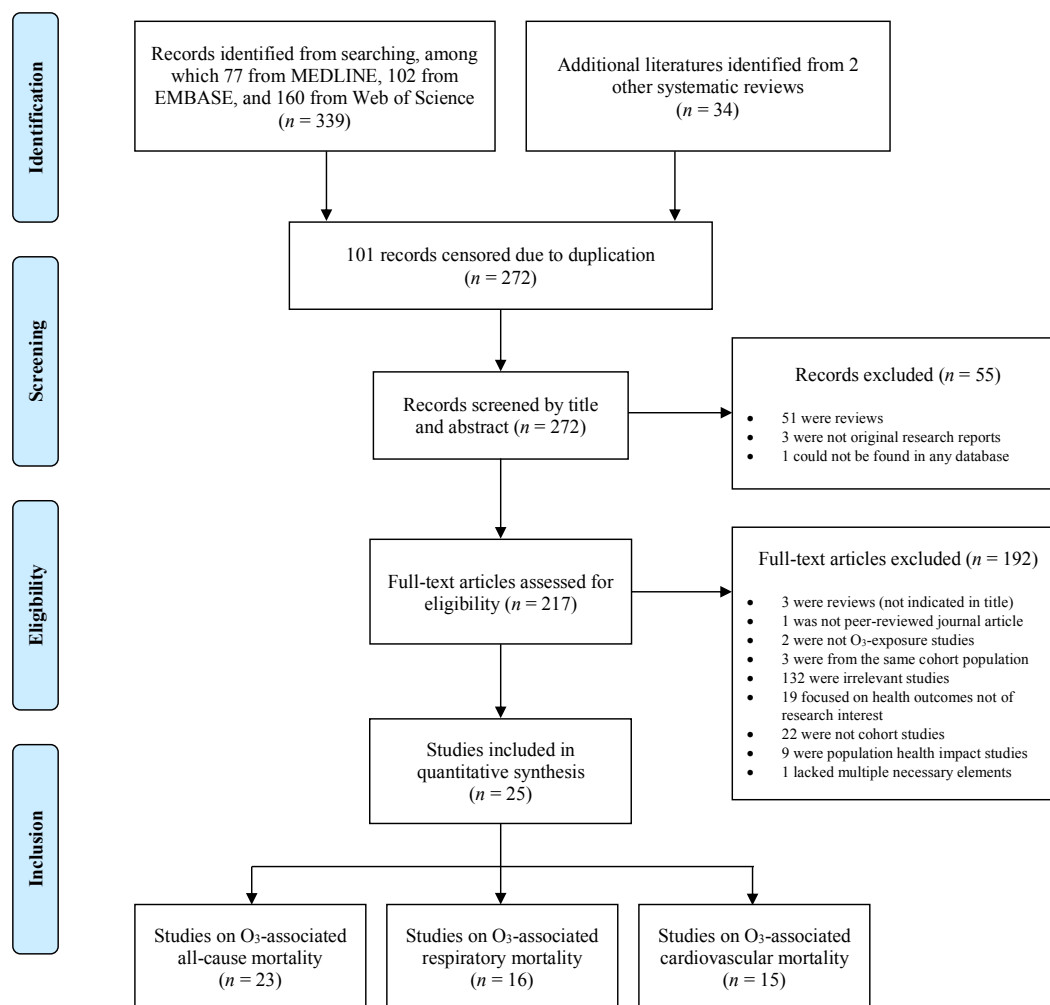


Figure 1 Schematic flowchart of study assessment and selection processes for literature review and meta-analysis.

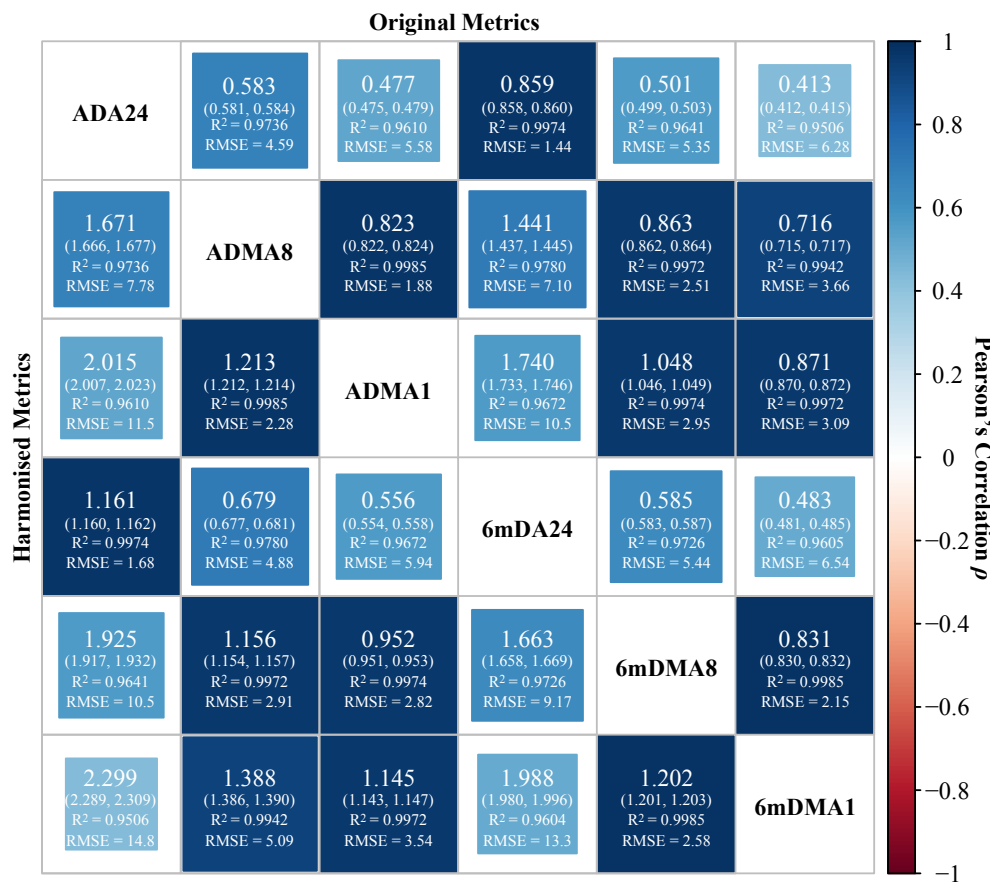


Figure 2 Cross-metric linear relationships and conversion accuracies. The cross-metric linear relationships were scaled by Pearson's correlation coefficients. The cross-metric conversion factors with 95% confidence intervals (95% CI) were estimated by non-intercept linear regression models, accompanied with fitting accuracies quantified by coefficient of determination (R^2) and root mean square error (RMSE) in ppbV. The conversion factors were defined as multiples from the original metric by column into the target harmonised metric by row, e.g. $ADMA8 = 1.671 ADA24$, $R^2 = 0.9736$, $RMSE = 7.78$ ppbV. Note that by non-intercept linear regression, the values of R^2 should no longer be equal to the squared Pearson's linear correlation coefficients. As the cross-metric conversion coefficients were estimated statistically, indirect conversions were not recommended, since regression noises restricted the validity of equation $k_{A \rightarrow B} = k_{A \rightarrow C} \cdot k_{C \rightarrow B}$.

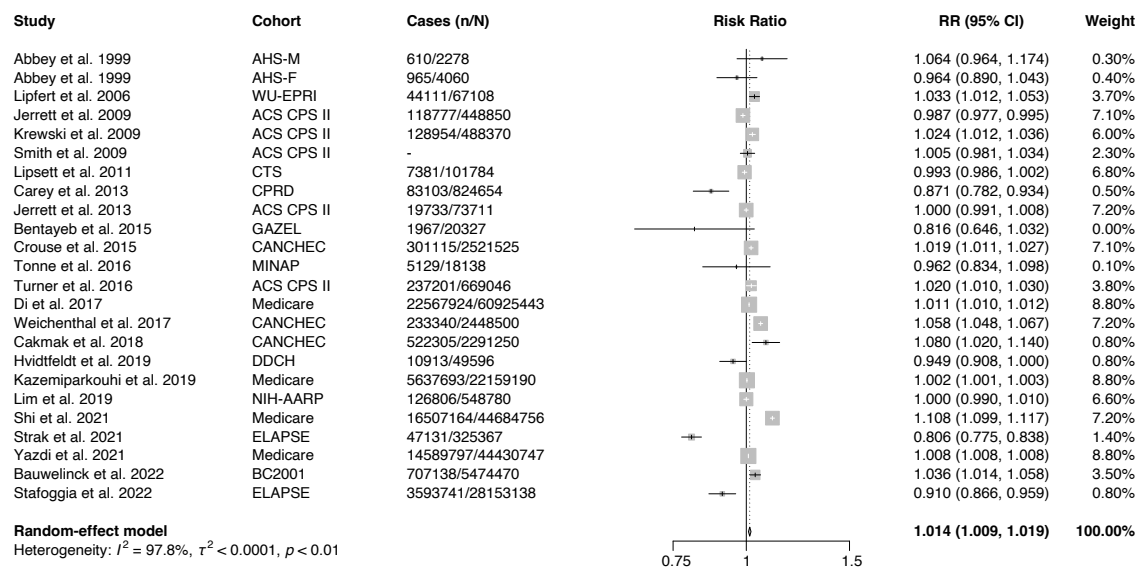


Figure 3 Pooled estimates of all-cause mortality risk associated with every 10-ppbV incremental O₃ exposure by 6mDMA8 metric. Size of the shaded squares in the forest plot represents the weight of each study estimated by random-effect model.

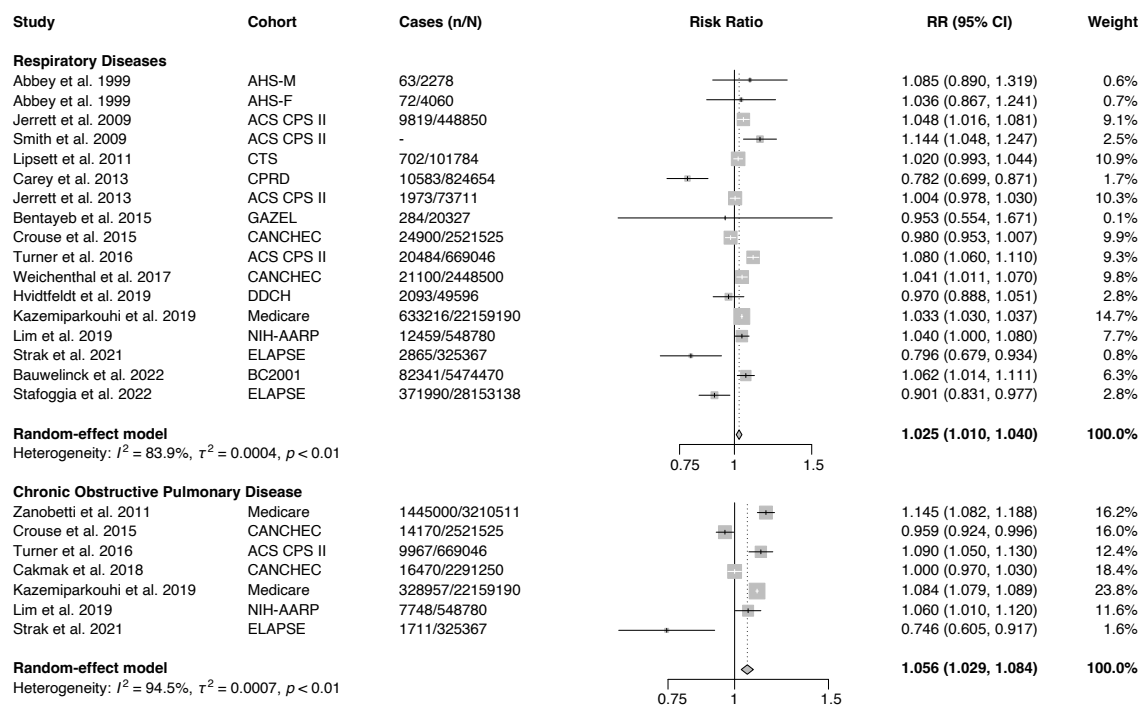


Figure 4 Pooled estimates of respiratory diseases and COPD mortality risks associated with every 10-ppbV incremental O₃ exposure by 6mDMA8 metric.

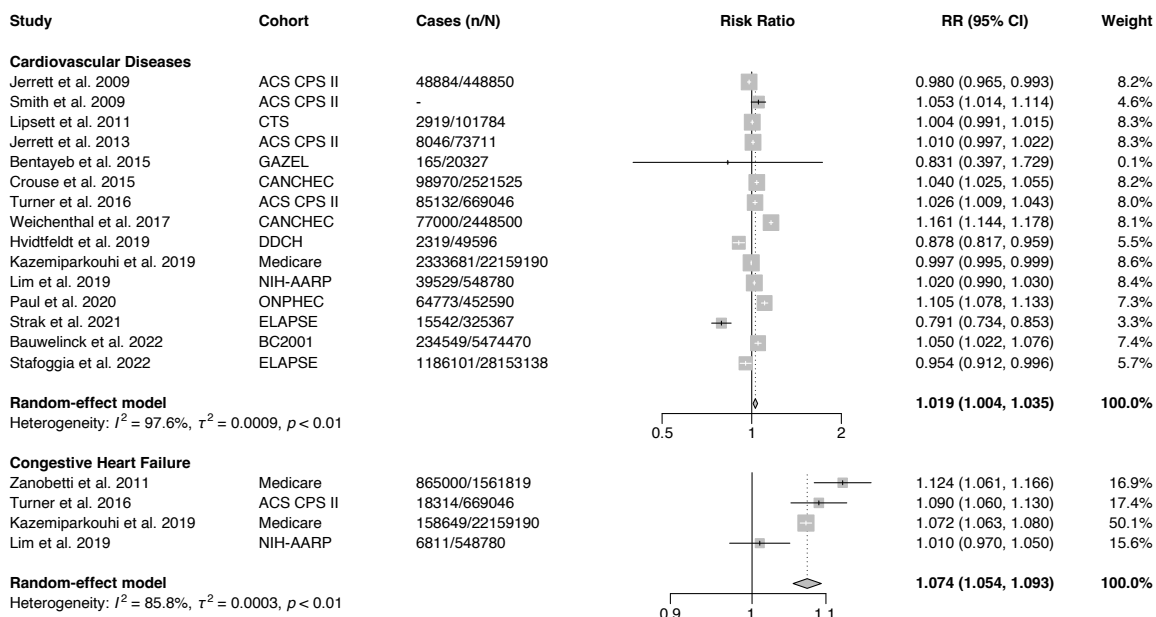


Figure 5 Pooled estimates of cardiovascular diseases and congestive heart failure mortality risk associated with every 10-ppbV incremental O₃ exposure by 6mDMA8 metric.

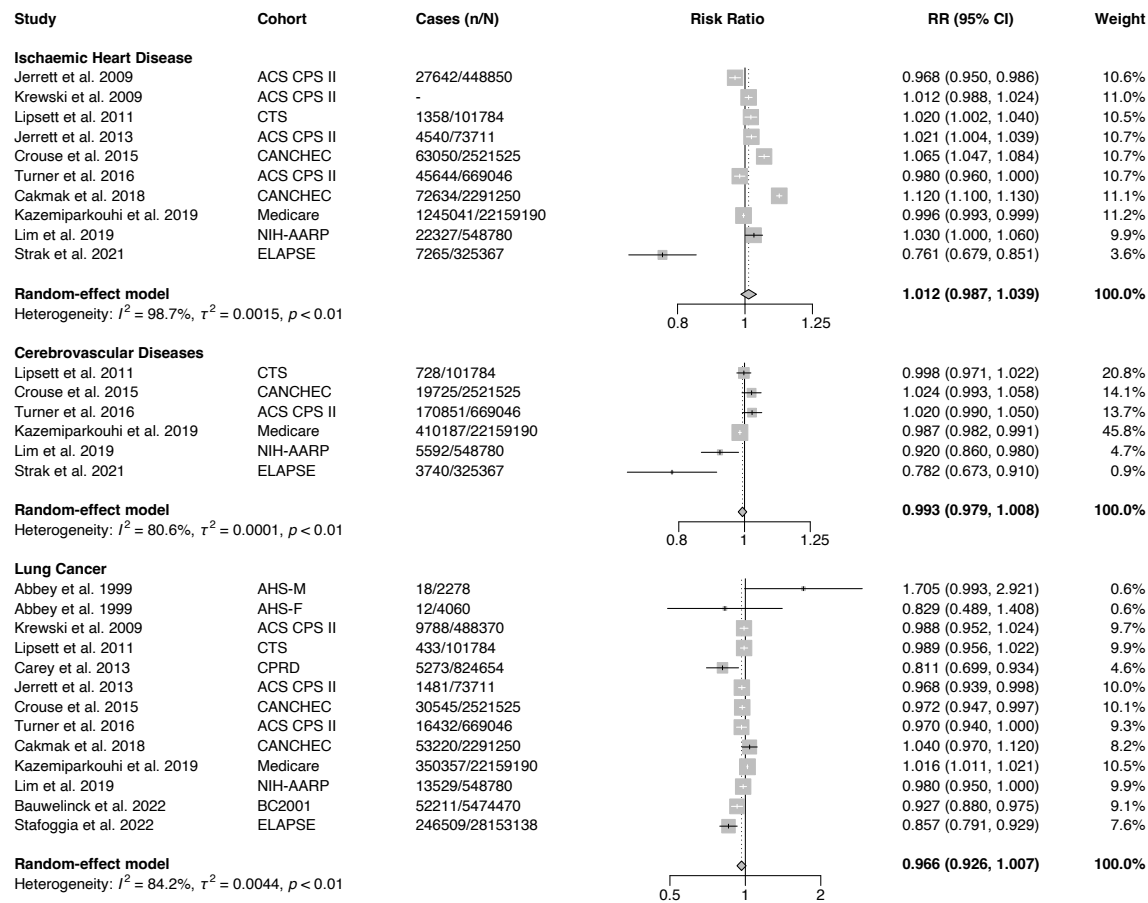


Figure 6 Pooled estimates of ischaemic heart disease, cerebrovascular diseases, lung cancer, ischaemic stroke, and pneumonia mortality risks associated with every 10-ppbV incremental O₃ exposure by 6mDMA8 metric.

REFERENCES

1. Fu, B.; Gasser, T.; Li, B.; Tao, S.; Ciaisi, P.; Piao, S.; Balkanski, Y.; Li, W.; Yin, T.; Han, L., Short-lived climate forcers have long-term climate impacts via the carbon-climate feedback. *Nat Clim Change* **2020**, *10*, (9), 851-855.
2. Wilson, S. R.; Madronich, S.; Longstreth, J. D.; Solomon, K. R., Interactive effects of changing stratospheric ozone and climate on tropospheric composition and air quality, and the consequences for human and ecosystem health. *Photochem Photobiol Sci* **2019**, *18*, (3), 775-803.
3. Stolarski, R. S., The Antarctic ozone hole. *Sci Am* **1988**, *258*, (1), 30-37.
4. Ghude, S. D.; Jena, C.; Chate, D. M.; Beig, G.; Pfister, G. G.; Kumar, R.; Ramanathan, V., Reductions in India's crop yield due to ozone. *Geophys Res Lett* **2014**, *41*, (15), 5685-5691.
5. Zhang, F.; Zhang, H.; Wu, C.; Zhang, M.; Feng, H.; Li, D.; Zhu, W., Acute effects of ambient air pollution on clinic visits of college students for upper respiratory tract infection in Wuhan, China. *Environ Sci Pollut Res Int* **2021**, 1-11.
6. Zheng, X.-Y.; Orellano, P.; Lin, H.-L.; Jiang, M.; Guan, W.-J., Short-term exposure to ozone, nitrogen dioxide, and sulphur dioxide and emergency department visits and hospital admissions due to asthma: A systematic review and meta-analysis. *Environ Int* **2021**, *150*, 106435.
7. Liu, Y.; Pan, J.; Fan, C.; Xu, R.; Wang, Y.; Xu, C.; Xie, S.; Zhang, H.; Cui, X.; Peng, Z.; Shi, C.; Zhang, Y.; Sun, H.; Zhou, Y.; Zhang, L., Short-Term Exposure to Ambient Air Pollution and Mortality From Myocardial Infarction. *J Am Coll Cardiol* **2021**, *77*, (3), 271-281.
8. Zhao, R.; Chen, S.; Wang, W.; Huang, J.; Wang, K.; Liu, L.; Wei, S., The impact of short-term exposure to air pollutants on the onset of out-of-hospital cardiac arrest: A systematic review and meta-analysis. *Int J Cardiol* **2017**, *226*, 110-117.
9. Han, C.; Lu, Y.; Cheng, H.; Wang, C.; Chan, P., The impact of long-term exposure to ambient air pollution and second-hand smoke on the onset of Parkinson disease: a review and meta-analysis. *Public Health* **2020**, *179*, 100-110.
10. Li, J.; Huang, J.; Cao, R.; Yin, P.; Wang, L.; Liu, Y.; Pan, X.; Li, G.; Zhou, M., The association between ozone and years of life lost from stroke, 2013-2017: A retrospective regression analysis in 48 major Chinese cities. *J Hazard Mater* **2021**, *405*, 124220.
11. Liu, G.; Sun, B.; Yu, L.; Chen, J.; Han, B.; Li, Y.; Chen, J., The Gender-Based Differences in Vulnerability to Ambient Air Pollution and Cerebrovascular Disease Mortality: Evidences Based on 26781 Deaths. *Glob Heart* **2020**, *15*, (1), 46.
12. Sun, Z.; Yang, L.; Bai, X.; Du, W.; Shen, G.; Fei, J.; Wang, Y.; Chen, A.; Chen, Y.; Zhao, M., Maternal ambient air pollution exposure with spatial-temporal variations and preterm birth risk assessment during 2013-2017 in Zhejiang Province, China. *Environ Int* **2019**, *133*, (Pt B), 105242.
13. Global Burden of Disease Collaborative Network, Global Burden of Disease Study 2019 (GBD 2019) Results. In Institute for Health Metrics and Evaluation (IHME): Seattle, United States, 2020.
14. Niu, Z.; Liu, F.; Yu, H.; Wu, S.; Xiang, H., Association between exposure to ambient air pollution and hospital admission, incidence, and mortality of stroke: an updated systematic review and meta-analysis of more than 23 million participants. *Environ Health Prev Med* **2021**, *26*, (1), 1-14.
15. Huangfu, P.; Atkinson, R., Long-term exposure to NO₂ and O₃ and all-cause and respiratory mortality: A systematic review and meta-analysis. *Environ Int* **2020**, *144*, 105998.
16. Atkinson, R. W.; Butland, B. K.; Dimitroulopoulou, C.; Heal, M. R.; Stedman, J. R.; Carslaw, N.; Jarvis, D.; Heaviside, C.; Vardoulakis, S.; Walton, H.; Anderson, H. R., Long-term exposure to ambient ozone and mortality: a quantitative systematic review and meta-analysis of evidence from cohort studies. *BMJ Open* **2016**, *6*, (2), e009493.

17. Shen, H.; Sun, Z.; Chen, Y.; Russell, A. G.; Hu, Y.; Odman, M. T.; Qian, Y.; Archibald, A. T.; Tao, S., Novel Method for Ozone Isopleth Construction and Diagnosis for the Ozone Control Strategy of Chinese Cities. *Environ Sci Technol* **2021**, *55*, (23), 15625-15636.
18. Sun, Z.; Archibald, A. T., Multi-stage Ensemble-learning-based Model Fusion for Surface Ozone Simulations: A Focus on CMIP6 Models. *Environmental Science and Ecotechnology* **2021**, *8*, 100124.
19. Schultz, M. G.; Schroder, S.; Lyapina, O.; Cooper, O. R.; Galbally, I.; Petropavlovskikh, I.; von Schneidmesser, E.; Tanimoto, H.; Elshorbany, Y.; Naja, M.; Seguel, R. J.; Dauert, U.; Eckhardt, P.; Feigenspan, S.; Fiebig, M.; Hjellbrekke, A. G.; Hong, Y. D.; Kjeld, P. C.; Koide, H.; Lear, G.; Tarasick, D.; Ueno, M.; Wallasch, M.; Baumgardner, D.; Chuang, M. T.; Gillett, R.; Lee, M.; Molloy, S.; Moolla, R.; Wang, T.; Sharps, K.; Adame, J. A.; Ancellet, G.; Apadula, F.; Artaxo, P.; Barlasina, M. E.; Bogucka, M.; Bonasoni, P.; Chang, L.; Colomb, A.; Cuevas-Agullo, E.; Cupeiro, M.; Degorska, A.; Ding, A. J.; FrHlich, M.; Frolova, M.; Gadhavi, H.; Gheusi, F.; Gilge, S.; Gonzalez, M. Y.; Gros, V.; Hamad, S. H.; Helmig, D.; Henriques, D.; Hermansen, O.; Holla, R.; Hueber, J.; Im, U.; Jaffe, D. A.; Komala, N.; Kubistin, D.; Lam, K. S.; Laurila, T.; Lee, H.; Levy, I.; Mazzoleni, C.; Mazzoleni, L. R.; McClure-Begley, A.; Mohamad, M.; Murovec, M.; Navarro-Comas, M.; Nicodim, F.; Parrish, D.; Read, K. A.; Reid, N.; Ries, N. R. L.; Saxena, P.; Schwab, J. J.; Scorgie, Y.; Senik, I.; Simmonds, P.; Sinha, V.; Skorokhod, A. I.; Spain, G.; Spangl, W.; Spoor, R.; Springston, S. R.; Steer, K.; Steinbacher, M.; Suharguniyawan, E.; Torre, P.; Trickl, T.; Lin, W. L.; Weller, R.; Xu, X. B.; Xue, L. K.; Ma, Z. Q., Tropospheric Ozone Assessment Report: Database and metrics data of global surface ozone observations. *Elem Sci Anth* **2017**, *5*, 58-83.
20. Institute for Health Metrics and Evaluation (IHME), GBD 2019 Cause and Risk Summary: Ambient Ozone Pollution. In IHME, University of Washington: Seattle, USA, 2020.
21. Guyatt, G. H.; Oxman, A. D.; Vist, G. E.; Kunz, R.; Falck-Ytter, Y.; Alonso-Coello, P.; Schunemann, H. J.; Group, G. W., GRADE: an emerging consensus on rating quality of evidence and strength of recommendations. *BMJ* **2008**, *336*, (7650), 924-6.
22. Guyatt, G.; Oxman, A. D.; Akl, E. A.; Kunz, R.; Vist, G.; Brozek, J.; Norris, S.; Falck-Ytter, Y.; Glasziou, P.; DeBeer, H.; Jaeschke, R.; Rind, D.; Meerpohl, J.; Dahm, P.; Schunemann, H. J., GRADE guidelines: 1. Introduction-GRADE evidence profiles and summary of findings tables. *J Clin Epidemiol* **2011**, *64*, (4), 383-94.
23. Egger, M.; Davey Smith, G.; Schneider, M.; Minder, C., Bias in meta-analysis detected by a simple, graphical test. *BMJ* **1997**, *315*, (7109), 629-34.
24. Duval, S.; Tweedie, R., A nonparametric "trim and fill" method of accounting for publication bias in meta-analysis. *J Am Stat Assoc* **2000**, *95*, (449), 89-98.
25. Sun, H. Z.; Shin, Y. M.; Xia, M.; Ke, S.; Yuan, L.; Guo, Y.; Archibald, A. T., Spatial Resolved Surface Ozone with Urban and Rural Differentiation during 1990-2019: A Space-time Bayesian Neural Network Downscaler. *Environ Sci Technol* **2021**.
26. Krupa, S.; McGrath, M. T.; Andersen, C. P.; Booker, F. L.; Burkey, K. O.; Chappelka, A. H.; Chevone, B. I.; Pell, E. J.; Zilinskas, B. A., Ambient Ozone and Plant Health. *Plant Dis* **2001**, *85*, (1), 4-12.
27. Finlayson-Pitts, B.; Pitts Jr, J., Atmospheric chemistry of tropospheric ozone formation: scientific and regulatory implications. *Air & Waste* **1993**, *43*, (8), 1091-1100.
28. Fleming, Z. L.; Doherty, R. M.; Von Schneidmesser, E.; Malley, C. S.; Cooper, O. R.; Pinto, J. P.; Colette, A.; Xu, X.; Simpson, D.; Schultz, M. G.; Lefohn, A. S.; Hamad, S.; Moolla, R.; Solberg, S.; Feng, Z., Tropospheric Ozone Assessment Report: Present-day ozone distribution and trends relevant to human health. *Elem Sci Anth* **2018**, *6*, 12.
29. Griffiths, P. T.; Murray, L. T.; Zeng, G.; Archibald, A. T.; Emmons, L. K.; Galbally, I.; Hassler, B.; Horowitz, L. W.; Keeble, J.; Liu, J.; Moeini, O.; Naik, V.; amp; apos; Connor, F. M.; Shin, Y. M.; Tarasick, D.; Tilmes, S.; Turnock, S. T.; Wild, O.; Young, P. J.; Zanis, P., Tropospheric ozone in CMIP6 Simulations. *Atmos Chem Phys* **2021**, *21*, (5), 4187-4218.
30. Archibald, A. T.; O'Connor, F. M.; Abraham, N. L.; Archer-Nicholls, S.; Chipperfield, M. P.; Dalvi, M.; Folberth, G. A.; Dennison, F.; Dhomse, S. S.; Griffiths, P. T.; Hardacre, C.; Hewitt, A. J.; Hill, R.; Johnson, C. E.; Keeble, J.; Köhler, M. O.; Morgenstern, O.; Mulchay, J. P.; Ordóñez, C.; Pope, R. J.;

- Rumbold, S.; Russo, M. R.; Savage, N.; Sellar, A.; Stringer, M.; Turnock, S.; Wild, O.; Zeng, G., Description and evaluation of the UKCA stratosphere-troposphere chemistry scheme (StratTrop vn 1.0) implemented in UKESM1. *Geosci Model Dev* **2019**, *13*, (3), 1223-1266.
31. Tong, L.; Zhang, H.; Yu, J.; He, M.; Xu, N.; Zhang, J.; Qian, F.; Feng, J.; Xiao, H., Characteristics of surface ozone and nitrogen oxides at urban, suburban and rural sites in Ningbo, China. *Atmos Res* **2017**, *187*, 57-68.
 32. U.S. EPA *Air Quality Criteria For Ozone and Related Photochemical Oxidants (Final Report, 2006)*; U.S. Environmental Protection Agency: Washington, DC, 2006.
 33. Tarasick, D.; Galbally, I. E.; Cooper, O. R.; Schultz, M. G.; Ancellet, G.; Leblanc, T.; Wallington, T. J.; Ziemke, J.; Liu, X.; Steinbacher, M.; Staehelin, J.; Vigouroux, C.; Hannigan, J. W.; Garcia, O.; Foret, G.; Zanis, P.; Weatherhead, E.; Petropavlovskikh, I.; Worden, H.; Osman, M.; Liu, J.; Chang, K. L.; Gaudel, A.; Lin, M. Y.; Granados-Munoz, M.; Thompson, A. M.; Oltmans, S. J.; Cuesta, J.; Dufour, G.; Thouret, V.; Hassler, B.; Trickl, T.; Neu, J. L., Tropospheric Ozone Assessment Report: Tropospheric ozone from 1877 to 2016, observed levels, trends and uncertainties. *Elem Sci Anth* **2019**, *7*, 39.
 34. Lu, X.; Hong, J. Y.; Zhang, L.; Cooper, O. R.; Schultz, M. G.; Xu, X. B.; Wang, T.; Gao, M.; Zhao, Y. H.; Zhang, Y. H., Severe Surface Ozone Pollution in China: A Global Perspective. *Environ Sci Technol Lett* **2018**, *5*, (8), 487-494.
 35. Hunter, J. E.; Schmidt, F. L., Meta-analysis. In *Advances in educational and psychological testing: Theory and applications*, Springer: 1991; pp 157-183.
 36. Higgins, J. P.; Thompson, S. G.; Deeks, J. J.; Altman, D. G., Measuring inconsistency in meta-analyses. *BMJ* **2003**, *327*, (7414), 557-60.
 37. Burnett, R. T.; Pope, C. A., 3rd; Ezzati, M.; Olives, C.; Lim, S. S.; Mehta, S.; Shin, H. H.; Singh, G.; Hubbell, B.; Brauer, M.; Anderson, H. R.; Smith, K. R.; Balmes, J. R.; Bruce, N. G.; Kan, H.; Laden, F.; Pruss-Ustun, A.; Turner, M. C.; Gapstur, S. M.; Diver, W. R.; Cohen, A., An integrated risk function for estimating the global burden of disease attributable to ambient fine particulate matter exposure. *Environ Health Perspect* **2014**, *122*, (4), 397-403.
 38. Abbey, D. E.; Nishino, N.; McDonnell, W. F.; Burchette, R. J.; Knutsen, S. F.; Lawrence Beeson, W.; Yang, J. X., Long-term inhalable particles and other air pollutants related to mortality in nonsmokers. *Am J Respir Crit Care Med* **1999**, *159*, (2), 373-82.
 39. Lipfert, F. W.; Wyzga, R. E.; Baty, J. D.; Miller, J. P., Traffic density as a surrogate measure of environmental exposures in studies of air pollution health effects: Long-term mortality in a cohort of US veterans. *Atmos Environ* **2006**, *40*, (1), 154-169.
 40. Jerrett, M.; Burnett, R. T.; Pope, C. A., 3rd; Ito, K.; Thurston, G.; Krewski, D.; Shi, Y.; Calle, E.; Thun, M., Long-term ozone exposure and mortality. *N Engl J Med* **2009**, *360*, (11), 1085-95.
 41. Krewski, D.; Jerrett, M.; Burnett, R. T.; Ma, R.; Hughes, E.; Shi, Y.; Turner, M. C.; Pope III, C. A.; Thurston, G.; Calle, E. E., *Extended follow-up and spatial analysis of the American Cancer Society study linking particulate air pollution and mortality*. Health Effects Institute Boston, MA: 2009.
 42. Smith, K. R.; Jerrett, M.; Anderson, H. R.; Burnett, R. T.; Stone, V.; Derwent, R.; Atkinson, R. W.; Cohen, A.; Shonkoff, S. B.; Krewski, D.; Pope, C. A., 3rd; Thun, M. J.; Thurston, G., Public health benefits of strategies to reduce greenhouse-gas emissions: health implications of short-lived greenhouse pollutants. *Lancet* **2009**, *374*, (9707), 2091-2103.
 43. Lipsett, M. J.; Ostro, B. D.; Reynolds, P.; Goldberg, D.; Hertz, A.; Jerrett, M.; Smith, D. F.; Garcia, C.; Chang, E. T.; Bernstein, L., Long-term exposure to air pollution and cardiorespiratory disease in the California teachers study cohort. *Am J Respir Crit Care Med* **2011**, *184*, (7), 828-35.
 44. Zanobetti, A.; Schwartz, J., Ozone and survival in four cohorts with potentially predisposing diseases. *Am J Respir Crit Care Med* **2011**, *184*, (7), 836-41.
 45. Carey, I. M.; Atkinson, R. W.; Kent, A. J.; van Staa, T.; Cook, D. G.; Anderson, H. R., Mortality associations with long-term exposure to outdoor air pollution in a national English cohort. *Am J Respir Crit Care Med* **2013**, *187*, (11), 1226-33.

46. Jerrett, M.; Burnett, R. T.; Beckerman, B. S.; Turner, M. C.; Krewski, D.; Thurston, G.; Martin, R. V.; van Donkelaar, A.; Hughes, E.; Shi, Y.; Gapstur, S. M.; Thun, M. J.; Pope, C. A., 3rd, Spatial analysis of air pollution and mortality in California. *Am J Respir Crit Care Med* **2013**, *188*, (5), 593-9.
47. Bentayeb, M.; Wagner, V.; Stempfelet, M.; Zins, M.; Goldberg, M.; Pascal, M.; Larrieu, S.; Beaudreau, P.; Cassadou, S.; Eilstein, D., Association between long-term exposure to air pollution and mortality in France: a 25-year follow-up study. *Environ Int* **2015**, *85*, 5-14.
48. Crouse, D. L.; Peters, P. A.; Hystad, P.; Brook, J. R.; van Donkelaar, A.; Martin, R. V.; Villeneuve, P. J.; Jerrett, M.; Goldberg, M. S.; Pope III, C. A., Ambient PM_{2.5}, O₃, and NO₂ exposures and associations with mortality over 16 years of follow-up in the Canadian Census Health and Environment Cohort (CanCHEC). *Environ Health Perspect* **2015**, *123*, (11), 1180-1186.
49. Tonne, C.; Halonen, J. I.; Beevers, S. D.; Dajnak, D.; Gulliver, J.; Kelly, F. J.; Wilkinson, P.; Anderson, H. R., Long-term traffic air and noise pollution in relation to mortality and hospital readmission among myocardial infarction survivors. *Int J Hyg Environ Health* **2016**, *219*, (1), 72-78.
50. Turner, M. C.; Jerrett, M.; Pope, C. A., 3rd; Krewski, D.; Gapstur, S. M.; Diver, W. R.; Beckerman, B. S.; Marshall, J. D.; Su, J.; Crouse, D. L.; Burnett, R. T., Long-Term Ozone Exposure and Mortality in a Large Prospective Study. *Am J Respir Crit Care Med* **2016**, *193*, (10), 1134-42.
51. Di, Q.; Wang, Y.; Zanobetti, A.; Wang, Y.; Koutrakis, P.; Choirat, C.; Dominici, F.; Schwartz, J. D., Air Pollution and Mortality in the Medicare Population. *N Engl J Med* **2017**, *376*, (26), 2513-2522.
52. Weichenthal, S.; Pinault, L. L.; Burnett, R. T., Impact of oxidant gases on the relationship between outdoor fine particulate air pollution and nonaccidental, cardiovascular, and respiratory mortality. *Sci Rep* **2017**, *7*, (1), 1-10.
53. Cakmak, S.; Hebborn, C.; Pinault, L.; Lavigne, E.; Vanos, J.; Crouse, D. L.; Tjepkema, M., Associations between long-term PM_{2.5} and ozone exposure and mortality in the Canadian Census Health and Environment Cohort (CANCHEC), by spatial synoptic classification zone. *Environ Int* **2018**, *111*, 200-211.
54. Hvidtfeldt, U. A.; Sorensen, M.; Geels, C.; Ketzel, M.; Khan, J.; Tjønneland, A.; Overvad, K.; Brandt, J.; Raaschou-Nielsen, O., Long-term residential exposure to PM_{2.5}, PM₁₀, black carbon, NO₂, and ozone and mortality in a Danish cohort. *Environ Int* **2019**, *123*, 265-272.
55. Kazemiparkouhi, F.; Eum, K. D.; Wang, B.; Manjourides, J.; Suh, H. H., Long-term ozone exposures and cause-specific mortality in a US Medicare cohort. *J Expo Sci Environ Epidemiol* **2020**, *30*, (4), 650-658.
56. Lim, C. C.; Hayes, R. B.; Ahn, J.; Shao, Y.; Silverman, D. T.; Jones, R. R.; Garcia, C.; Bell, M. L.; Thurston, G. D., Long-Term Exposure to Ozone and Cause-Specific Mortality Risk in the United States. *Am J Respir Crit Care Med* **2019**, *200*, (8), 1022-1031.
57. Paul, L. A.; Burnett, R. T.; Kwong, J. C.; Hystad, P.; van Donkelaar, A.; Bai, L.; Goldberg, M. S.; Lavigne, E.; Copes, R.; Martin, R. V., The impact of air pollution on the incidence of diabetes and survival among prevalent diabetes cases. *Environ Int* **2020**, *134*, 105333.
58. Shi, L.; Rosenberg, A.; Wang, Y.; Liu, P.; Danesh Yazdi, M.; Requia, W.; Steenland, K.; Chang, H.; Sarnat, J. A.; Wang, W.; Zhang, K.; Zhao, J.; Schwartz, J., Low-Concentration Air Pollution and Mortality in American Older Adults: A National Cohort Analysis (2001-2017). *Environ Sci Technol* **2021**.
59. Strak, M.; Weinmayr, G.; Rodopoulou, S.; Chen, J.; de Hoogh, K.; Andersen, Z. J.; Atkinson, R.; Bauwelinck, M.; Bekkevold, T.; Bellander, T.; Boutron-Ruault, M. C.; Brandt, J.; Cesaroni, G.; Concin, H.; Fecht, D.; Forastiere, F.; Gulliver, J.; Hertel, O.; Hoffmann, B.; Hvidtfeldt, U. A.; Janssen, N. A. H.; Jockel, K. H.; Jorgensen, J. T.; Ketzel, M.; Klompaker, J. O.; Lager, A.; Leander, K.; Liu, S.; Ljungman, P.; Magnusson, P. K. E.; Mehta, A. J.; Nagel, G.; Oftedal, B.; Pershagen, G.; Peters, A.; Raaschou-Nielsen, O.; Renzi, M.; Rizzuto, D.; van der Schouw, Y. T.; Schramm, S.; Severi, G.; Sigsgaard, T.; Sorensen, M.; Stafoggia, M.; Tjønneland, A.; Verschuren, W. M. M.; Vienneau, D.; Wolf, K.; Katsouyanni, K.; Brunekreef, B.; Hoek, G.; Samoli, E., Long term exposure to low level air pollution and mortality in eight European cohorts within the ELAPSE project: pooled analysis. *BMJ* **2021**, *374*.

60. Yazdi, M. D.; Wang, Y.; Di, Q.; Requia, W. J.; Wei, Y. G.; Shi, L. H.; Sabath, M. B.; Dominici, F.; Coull, B.; Evans, J. S.; Koutrakis, P.; Schwartz, J. D., Long-term effect of exposure to lower concentrations of air pollution on mortality among US Medicare participants and vulnerable subgroups: a doubly-robust approach. *Lancet Planet Health* **2021**, *5*, (10), E689-E697.
61. Bauwelinck, M.; Chen, J.; de Hoogh, K.; Katsouyanni, K.; Rodopoulou, S.; Samoli, E.; Andersen, Z. J.; Atkinson, R.; Casas, L.; Deboosere, P.; Demoury, C.; Janssen, N.; Klompaker, J. O.; Lefebvre, W.; Mehta, A. J.; Nawrot, T. S.; Oftedal, B.; Renzi, M.; Stafoggia, M.; Strak, M.; Vandenheede, H.; Vanpoucke, C.; Van Nieuwenhuysse, A.; Vienneau, D.; Brunekreef, B.; Hoek, G., Variability in the association between long-term exposure to ambient air pollution and mortality by exposure assessment method and covariate adjustment: A census-based country-wide cohort study. *Sci Total Environ* **2022**, *804*, 150091.
62. Stafoggia, M.; Oftedal, B.; Chen, J.; Rodopoulou, S.; Renzi, M.; Atkinson, R. W.; Bauwelinck, M.; Klompaker, J. O.; Mehta, A.; Vienneau, D., Long-term exposure to low ambient air pollution concentrations and mortality among 28 million people: results from seven large European cohorts within the ELAPSE project. *Lancet Planet Health* **2022**, *6*, (1), e9-e18.
63. Hvidtfeldt, U. A.; Geels, C.; Sørensen, M.; Ketzler, M.; Khan, J.; Tjønneland, A.; Christensen, J. H.; Brandt, J.; Raaschou-Nielsen, O., Long-term residential exposure to PM_{2.5} constituents and mortality in a Danish cohort. *Environ Int* **2019**, *133*, (Pt B), 105268.
64. Holtzman, M. J.; Cunningham, J. H.; Sheller, J. R.; Irsigler, G. B.; Nadel, J. A.; Boushey, H. A., Effect of ozone on bronchial reactivity in atopic and nonatopic subjects. *Am Rev Respir Dis* **1979**, *120*, (5), 1059-67.
65. Kodavanti, U. P.; Schladweiler, M. C.; Ledbetter, A. D.; Watkinson, W. P.; Campen, M. J.; Winsett, D. W.; Richards, J. R.; Crissman, K. M.; Hatch, G. E.; Costa, D. L., The spontaneously hypertensive rat as a model of human cardiovascular disease: Evidence of exacerbated cardiopulmonary injury and oxidative stress from inhaled emission particulate matter. *Toxicol Appl Pharmacol* **2000**, *164*, (3), 250-263.
66. Wang, M.; Sampson, P. D.; Sheppard, L. E.; Stein, J. H.; Vedal, S.; Kaufman, J. D., Long-Term Exposure to Ambient Ozone and Progression of Subclinical Arterial Disease: The Multi-Ethnic Study of Atherosclerosis and Air Pollution. *Environ Health Perspect* **2019**, *127*, (5), 57001.
67. Whyand, T.; Hurst, J. R.; Beckles, M.; Caplin, M. E., Pollution and respiratory disease: can diet or supplements help? A review. *Respir Res* **2018**, *19*, (1), 79.
68. EPA *Integrated Science Assessment (ISA) for Particulate Matter*; Washington, D.C., 2019.
69. World Health Organization, *WHO global air quality guidelines: particulate matter (PM_{2.5} and PM₁₀), ozone, nitrogen dioxide, sulfur dioxide and carbon monoxide: Executive summary*. 2021.
70. Pope III, C. A.; Cohen, A. J.; Burnett, R. T., Cardiovascular disease and fine particulate matter: lessons and limitations of an integrated exposure-response approach. *Circ Res* **2018**, *122*, (12), 1645-1647.
71. Fantke, P.; McKone, T. E.; Tainio, M.; Jolliet, O.; Apte, J. S.; Stylianou, K. S.; Illner, N.; Marshall, J. D.; Choma, E. F.; Evans, J. S., Global effect factors for exposure to fine particulate matter. *Environ Sci Technol* **2019**, *53*, (12), 6855-6868.
72. Yin, P.; Brauer, M.; Cohen, A.; Burnett, R. T.; Liu, J.; Liu, Y.; Liang, R.; Wang, W.; Qi, J.; Wang, L.; Zhou, M., Long-term Fine Particulate Matter Exposure and Nonaccidental and Cause-specific Mortality in a Large National Cohort of Chinese Men. *Environ Health Perspect* **2017**, *125*, (11), 117002.
73. Malley, C. S.; Henze, D. K.; Kuylenstierna, J. C. I.; Vallack, H. W.; Davila, Y.; Anenberg, S. C.; Turner, M. C.; Ashmore, M. R., Updated Global Estimates of Respiratory Mortality in Adults ≥ 30 Years of Age Attributable to Long-Term Ozone Exposure. *Environ Health Perspect* **2017**, *125*, (8), 087021.
74. Anenberg, S. C.; Horowitz, L. W.; Tong, D. Q.; West, J. J., An estimate of the global burden of anthropogenic ozone and fine particulate matter on premature human mortality using atmospheric modeling. *Environ Health Perspect* **2010**, *118*, (9), 1189-1195.
75. Fann, N.; Lamson, A. D.; Anenberg, S. C.; Wesson, K.; Risley, D.; Hubbell, B. J., Estimating the

- national public health burden associated with exposure to ambient PM_{2.5} and ozone. *Risk Anal* **2012**, 32, (1), 81-95.
76. Silva, R. A.; West, J. J.; Zhang, Y.; Anenberg, S. C.; Lamarque, J.-F.; Shindell, D. T.; Collins, W. J.; Dalsoren, S.; Faluvegi, G.; Folberth, G., Global premature mortality due to anthropogenic outdoor air pollution and the contribution of past climate change. *Environ Res Lett* **2013**, 8, (3), 034005.
77. West, J. J.; Smith, S. J.; Silva, R. A.; Naik, V.; Zhang, Y.; Adelman, Z.; Fry, M. M.; Anenberg, S.; Horowitz, L. W.; Lamarque, J.-F., Co-benefits of mitigating global greenhouse gas emissions for future air quality and human health. *Nat Clim Change* **2013**, 3, (10), 885-889.
78. Yu, P.; Guo, S.; Xu, R.; Ye, T.; Li, S.; Sim, M.; Abramson, M. J.; Guo, Y., Cohort studies of long-term exposure to outdoor particulate matter and risks of cancer: A systematic review and meta-analysis. *The Innovation* **2021**, 100143.
79. Meng, X.; Liu, C.; Chen, R.; Sera, F.; Vicedo-Cabrera, A. M.; Milojevic, A.; Guo, Y.; Tong, S.; Coelho, M.; Saldiva, P. H. N.; Lavigne, E.; Correa, P. M.; Ortega, N. V.; Osorio, S.; Garcia, Kysely, J.; Urban, A.; Orru, H.; Maasikmets, M.; Jaakkola, J. J. K.; Ryti, N.; Huber, V.; Schneider, A.; Katsouyanni, K.; Analitis, A.; Hashizume, M.; Honda, Y.; Ng, C. F. S.; Nunes, B.; Teixeira, J. P.; Holobaca, I. H.; Fratianni, S.; Kim, H.; Tobias, A.; Iniguez, C.; Forsberg, B.; Astrom, C.; Ragetti, M. S.; Guo, Y. L.; Pan, S. C.; Li, S.; Bell, M. L.; Zanobetti, A.; Schwartz, J.; Wu, T.; Gasparrini, A.; Kan, H., Short term associations of ambient nitrogen dioxide with daily total, cardiovascular, and respiratory mortality: multilocation analysis in 398 cities. *BMJ* **2021**, 372, n534.
80. Yu, K.; Lv, J.; Qiu, G.; Yu, C.; Guo, Y.; Bian, Z.; Yang, L.; Chen, Y.; Wang, C.; Pan, A.; Liang, L.; Hu, F. B.; Chen, Z.; Li, L.; Wu, T.; China Kadoorie Biobank, S., Cooking fuels and risk of all-cause and cardiopulmonary mortality in urban China: a prospective cohort study. *Lancet Glob Health* **2020**, 8, (3), e430-e439.