

1 **Title:** Diagnostic Accuracy of Commercially Available Tests for Respiratory Syncytial

2 Virus: A Scoping Literature Review in the COVID-19 Era

3 **Running title (50 characters):** Diagnostic accuracy of RSV tests

4 **Authors:** David I. Bernstein,^a Asuncion Mejias,^{b,c} Barbara Rath,^{d,e} Christopher W. Woods,^f

5 and Jamie Phillips Deeter^{e,g,*}

6 **Affiliations:**

7 ^aCincinnati Children's Hospital Medical Center, University of Cincinnati College of
8 Medicine, Cincinnati, OH, USA; ^bDepartment of Pediatrics, Division of Infectious Diseases,
9 Nationwide Children's Hospital, The Ohio State University, Columbus, OH, USA; ^cCenter
10 for Vaccines and Immunity, Abigail Wexner Research Institute at Nationwide Children's
11 Hospital, Columbus, OH, USA; ^dVienna Vaccine Safety Initiative, New Orleans, LA, USA;
12 ^eESCMID Study Group for Respiratory Viruses (ESGREV), Basel, Switzerland; ^fInfectious
13 Diseases Division, Duke University Medical Center, Durham, NC, USA; ^gRoche Diagnostics
14 Corporation, Indianapolis, IN, USA

15 *Address correspondence to this author at: 9115 Hague Road, Indianapolis, IN, USA, 46250-
16 0457. Fax: +1 317-348-4320; telephone: +1 317-220-9721; email:
17 jamie.phillips.jp1@roche.com

18 **Keywords:** Clinical, Infectious Disease, Molecular Diagnostics, Nucleic-Acid-Based Testing,
19 Point of Care Testing Systems, Viral Diseases

20 **Abbreviations:** RSV, respiratory syncytial virus; COVID-19, coronavirus disease 2019;
21 SARS-CoV-2, severe acute respiratory syndrome coronavirus 2; rRT-PCR, real-time reverse
22 transcription-polymerase chain reaction; CDC, Centers for Disease Control and Prevention;
23 US, United States; POC, point-of-care; CLIA, Clinical Laboratory Improvement

24 Amendments; CI, confidence interval; DFA, direct fluorescent antibody test; FIA,

25 fluorescence immunoassay; IFA, immunofluorescence assay; NR, not reported.

26

27

28 **ABSTRACT (250/250 words)**

29 **Background:** Non-pharmaceutical interventions to prevent the spread of coronavirus disease
30 2019 also decreased the spread of respiratory syncytial virus (RSV) and influenza. Viral
31 diagnostic testing in patients with respiratory tract infections (RTI) is a necessary tool for
32 patient management; therefore, sensitive and specific tests are required. This scoping
33 literature review evaluated the analytical validity of commercially available sample-to-
34 answer RSV diagnostic tests in different contexts.

35 **Content:** PubMed and Embase were queried for studies reporting on the analytical validity of
36 tests for RSV in patients with RTI (published January 2005–January 2021). Sensitivity and
37 specificity of RSV tests and information on study design, patient, and setting characteristics
38 were extracted from 77 studies that met predefined inclusion criteria. A literature gap was
39 identified for studies of RSV tests conducted in adult-only populations (5.3% of total sub-
40 records), and in outpatient (7.5%) or household (0.8%) settings. Overall, RSV tests with
41 analytical time >30 min had higher sensitivity (62.5–100%) versus RSV tests with analytical
42 time ≤30 min (25.7–100%), this sensitivity range could be partially attributed to the different
43 modalities (antigen versus molecular) used. Molecular-based rapid RSV tests had higher
44 sensitivity (66.7–100%) and specificity (94.3–100%) than antigen-based RSV tests (25.7–
45 100%; 80.3–100%).

46 **Summary:** Molecular-based RSV tests should be considered for first-line use when possible,
47 given their high sensitivity and specificity and that adults with RTI typically have low viral
48 load, necessitating a highly sensitive test. This review benefits healthcare professionals by
49 summarizing the diagnostic accuracy data available for commercially available RSV tests.

50

51 **IMPACT STATEMENT (100/100 words)**

52 Viral diagnostic testing in patients with respiratory tract infection is a powerful tool for
53 patient management. This scoping literature review included 77 studies reporting the
54 analytical validity of commercially available respiratory syncytial virus (RSV) diagnostic
55 tests (published January 2005–January 2021) and examined the characteristics of such studies.
56 The data suggest that molecular-based RSV tests have higher sensitivity and specificity than
57 antigen-based tests, thus should be considered for first-line use for timely diagnosis and to
58 detect infections in adults with low level viral load. Future studies should investigate the
59 diagnostic accuracy of RSV tests in adults and in outpatient/household settings.

60 INTRODUCTION

61 Respiratory syncytial virus (RSV) infection is responsible for a significant proportion of
62 outpatient visits and hospitalizations in children <5 years old and is associated with
63 substantial clinical and economic burden (1). In a recent international study across 72
64 countries, there was an annual mean of 20.8 million cases and 1.8 million hospital admissions
65 for RSV infection among children <5 years old, and this was associated with \$611 million
66 (USD) discounted direct costs (2). Once considered to be a disease of childhood, there is
67 increasing recognition of the prevalence of RSV infection in the community dwelling (3) and
68 hospitalized adult populations; for example, the rate of hospitalization and economic burden
69 of hospitalized adults and the elderly (≥ 60 years old) with RSV infection has been shown to
70 rival that of influenza in the United States (US) (4-6).

71 The clinical manifestations of RSV infection vary according to the age of the patient and host
72 susceptibility to the virus, ranging from cold symptoms to severe respiratory distress (7).

73 Both adult and pediatric patients infected with RSV often present with non-specific,
74 overlapping symptoms that can lead to difficulty in distinguishing it from influenza,
75 coronavirus disease 2019 (COVID-19) caused by severe acute respiratory syndrome
76 coronavirus 2 (SARS-CoV-2), or other respiratory illnesses (8). Thus, empiric diagnosis is
77 often insufficient and should be supported by viral diagnostic testing to facilitate appropriate
78 treatment, improved surveillance, and timely infection control (9).

79 Historically, viral culture was the gold standard technique to diagnose a productive RSV
80 infection; however, it does not provide timely results to inform clinical management (10).

81 Therefore, real-time reverse transcription-polymerase chain reaction (rRT-PCR), which
82 detects the presence of the virus (active or inactive) with equal or greater sensitivity than viral
83 culture, is often referred to as the reference/gold standard for RSV diagnosis in clinical

84 laboratories (10). There are further modalities available for the detection of RSV with
85 variable diagnostic accuracy e.g., antigen-based testing is sensitive for detecting RSV in
86 young children but is not sensitive enough for use in older children or adults, as per the
87 Centers for Disease Control and Prevention (CDC) guidance, due to lower viral loads in the
88 respiratory specimens of this group (11). Thus, rRT-PCR testing is recommended for adults
89 with suspected RSV infection (11).

90 Most RSV testing takes place in hospitalized patients (12) where selection bias exists towards
91 more severe cases and pediatric patients, the age group most likely to be hospitalized due to
92 RSV infection (13). Testing for RSV in adults by internists and general practitioners is rare,
93 partially due to lack of awareness (14). A recent international study conducted across 15
94 countries reported that cases of RSV in adults ≥ 65 years old were notably under-represented
95 in national surveillance programs (15). RSV testing is also limited in the younger population
96 as shown by a prospective study in pediatric patients (≤ 18 years old) in Germany, which
97 revealed that only 8.7% of patients presenting with symptoms of a respiratory tract infection
98 underwent viral diagnostic testing during standard-of-care procedures (16). The lack of
99 routine testing for RSV may contribute to the underestimation of disease prevalence and this
100 has practical implications. In one study based in the emergency department of a US hospital,
101 patients aged 6–21 years old accounted for 8.7% of the total number of RSV positive tests,
102 whereas patients aged 22–59 years old and those aged ≥ 60 years old accounted for 14.0% and
103 10.5%, respectively (17). Viral diagnostic testing in pediatric and adult populations helps
104 tailor patient management and the implementation of hospital infection prevention policies,
105 as well as reduce the inappropriate use of antibiotics (18).

106 Non-pharmaceutical interventions implemented to prevent the spread of SARS-CoV-2 have
107 also impacted the spread of RSV and influenza virus, resulting in a larger population of
108 potential immune-naïve populations, which could lead to an increase in disease burden for

109 future respiratory virus seasons. As a result, models predict sporadic outbreaks and an
110 increase in the prevalence of these diseases (19). Indeed, the CDC recently released a health
111 advisory notice warning of increased interseasonal RSV activity across the Southern US (20),
112 and a similar interseasonal resurgence of RSV has been reported in pediatric populations in
113 another area of the US (21), Switzerland (22), and Australia (23). Viral diagnostic testing in
114 patients presenting with symptoms of a respiratory tract infection is a powerful tool for
115 surveillance and patient management during such periods of interseasonal resurgence and for
116 future respiratory virus seasons.

117 Sample-to-answer diagnostic tests encompass technology where sample extraction,
118 processing, and analysis are automated, and the test is often performed directly in one
119 cartridge or analyzer. These tests are often in the form of two different modalities, a lateral
120 flow antigen capture test or a point-of-care (POC) molecular test. Such tests offer key
121 advantages over laboratory-based diagnostics including ease of use and faster turnaround
122 time (24). Reducing the time needed to diagnose RSV has been shown to be beneficial in
123 adult and pediatric populations. The duration of time to RSV diagnosis from the point of
124 hospital admission to test result is positively correlated with length of hospital stay and
125 antibiotic use in hospitalized adults (12). Additionally, the use of POC testing for RSV in
126 pediatric patients has been associated with a reduction in: the use of antibiotic treatment, the
127 need for further clinical investigations, and time spent in the emergency department (25).

128 The Clinical Laboratory Improvement Amendments (CLIA) include federal standards that
129 regulate US clinical laboratories performing diagnostic testing on human samples (26). As
130 defined by CLIA, waived tests are simple tests with a low risk for an incorrect result; non-
131 waived testing is used to refer to moderate or high complexity tests that can only be used at
132 clinical laboratories that meet certain quality standards (27). There are several CLIA-waived
133 and non-waived tests available for the diagnosis of RSV. Information on the sensitivity and

134 specificity of such tests, and the patient and setting characteristics where these tests have
135 been studied, will help healthcare professionals' decision-making on the most appropriate test
136 to use in their practice.

137 The objective of this scoping literature review was to evaluate the sensitivity and specificity
138 of commercially available sample-to-answer diagnostic tests for RSV in patients with acute
139 respiratory infection and examine the characteristics of those studies. This review also sought
140 to identify knowledge gaps in the patient and setting characteristics where these tests have
141 been studied.

142 **MATERIALS AND METHODS**

143 **Scoping Review Design, Data Sources, and Search Strategy**

144 This scoping literature review was conducted using the Scoping Review methodology as
145 described by Arksey and O'Malley (28) and the guidance provided in the Preferred Reporting
146 Items for Systematic Reviews and Meta-Analyses extension for Scoping Reviews (29).
147 PubMed (<https://pubmed.ncbi.nlm.nih.gov/>) and Embase (<https://www.embase.com/>) were
148 interrogated on January 21, 2021 using the search terms and criteria in Supplemental Table 1
149 to identify studies reporting on the sensitivity and specificity of commercially available
150 sample-to-answer tests for RSV in patients with acute respiratory infection published
151 between January 2005 and January 2021. Database searches were supplemented by manual
152 searches and references, as appropriate. Duplicate articles and ineligible publication types
153 (narrative reviews, editorials, case reports, addresses, biographies, comments, directories,
154 Festschriften, interviews, lectures, legal cases, legislation, news, newspaper article, patient
155 education handouts, popular works) were excluded. The titles and abstracts of the remaining
156 articles were reviewed by two independent reviewers in parallel and discrepancies were
157 resolved through discussion. Full-text articles were then obtained, and a second round of

158 screening was conducted by two reviewers working in parallel, with adjudication through
159 discussion. Articles not meeting the inclusion criteria were excluded as necessary.

160 **Study Selection**

161 This scoping literature review included any peer-reviewed studies in the English language
162 providing original data on the sensitivity and specificity of a commercially available sample-
163 to-answer test for RSV (using any molecular or non-molecular diagnostic tools) relative to an
164 in-house or commercial rRT-PCR, viral culture, and/or immunofluorescence assay as the
165 reference standard in patients of any age with symptoms of a respiratory tract infection in any
166 setting. Original research articles, systematic reviews, and meta-analyses were included in the
167 review. Studies that used a non-commercial RSV test, studies where the RSV and reference
168 test were not carried out in the same samples, studies in immunocompromised patients, or
169 studies not otherwise meeting the inclusion criteria were excluded. Health economic analyses
170 and pre-clinical research studies were also excluded.

171 **Data Extraction**

172 The following information was extracted, where available: RSV test sensitivity, RSV test
173 specificity, commercial brand of RSV test, data collection (prospective vs retrospective),
174 industry sponsorship, age group of study population (adults were defined as patients ≥ 18
175 years old), majority ($>75\%$) specimen type, majority ($>75\%$) setting of patient recruitment,
176 and setting where the RSV test was performed. Any missing data were recorded as ‘not
177 reported’ and included in the data synthesis. The analytical time for each test was taken from
178 its respective manufacturer’s data sheet. Rapid tests, including those that were suitable for
179 use at the POC, were defined as having an analytical time ≤ 30 min. Where one article
180 reported several relevant sensitivity and specificity values (e.g., when more than one RSV
181 test was studied or if there was a prospective and retrospective arm of the study), then each

182 test or study arm was extracted as a ‘sub-record’. Following data extraction, analysis of
183 discordant results between the two reviewers was conducted by a third independent party and
184 discrepancies resolved.

185 **Data Reporting**

186 All data handling was carried out using Microsoft Excel 365 (Microsoft Corporation). The
187 range of sensitivity and specificity values and summary statistics were recorded including the
188 lowest and highest value quoted for a particular RSV test from the relevant sub-records.
189 Sensitivity and specificity ranges were not reported for RSV tests with <3 supporting sub-
190 records.

191 **RESULTS**

192 **Literature Search Outcome**

193 Following screening of titles and abstracts, 200 articles were subject to full-text screening and
194 77 studies were eventually included in the qualitative synthesis (Fig. 1). In studies reporting
195 several relevant sensitivity and specificity values (e.g., when more than one RSV test was
196 studied), each test was extracted as a sub-record. The 77 included studies corresponded to
197 133 included sub-records. Overall, the literature search detected 39 different commercially
198 available RSV tests from 27 manufacturers, which represented a variety of technologies and
199 analytical times (Supplemental Table 2).

200 **Characteristics of All Included Studies and Gap Analysis**

201 Most studies examined RSV tests with analytical time ≤ 30 min relative to RSV tests with
202 analytical time > 30 min (66.2% vs 33.8% of included sub-records; Table 1). The analytical
203 times taken from the manufacturer’s data sheet for each test are shown in Supplemental Table
204 2. Most studies assessed RSV tests in mixed (49.6% of included sub-records) or pediatric

205 (38.3%) populations, were prospective in design (62.4% of included sub-records), used rRT-
206 PCR as the reference standard (68.4%), and were industry sponsored (65.4%; Fig. 2). In all
207 studies evaluated, a nasopharyngeal swab was the specimen type most used (48.9% of
208 included sub-records; Fig. 2). Most patients were recruited when they were admitted to the
209 hospital (42.1%) or from mixed (34.6%) settings (Fig. 2).

210 For RSV tests with analytical time ≤ 30 min, most were performed at the POC (52.3%),
211 whereas RSV tests with analytical time > 30 min were predominantly conducted in the
212 clinical laboratory (64.4%) (Table 1). Regarding knowledge gaps in the literature, there was a
213 notably small percentage of studies conducted in adult-only patients (5.3%), few conducted in
214 outpatient settings (7.5%) and only one study was conducted in a household setting (Table 1).

215 **Sensitivity and Specificity of Antigen- Vs Molecular-Based RSV Tests**

216 RSV tests with analytical time ≤ 30 min had a greater variability in published sensitivity
217 values (25.7–100%; Table 2) relative to RSV tests with analytical time > 30 min (62.5–100%;
218 Table 2); this is partially reflective of the different assays (antigen and molecular) used for
219 RSV tests with analytical time ≤ 30 min. The range of specificity values was similar for RSV
220 tests with analytical time ≤ 30 min (80.3–100%) relative to RSV tests with analytical time > 30
221 min (77.0–100%; Table 2).

222 Of RSV tests with analytical time ≤ 30 min, 70.0% (14/20) were antigen-based, and 30.0%
223 (6/20) were molecular tests (Supplemental Table 2). Overall, molecular RSV tests with
224 analytical time ≤ 30 min had an overall higher sensitivity (66.7–100%) and specificity (94.3–
225 100%), relative to antigen-based RSV tests with analytical time ≤ 30 min (sensitivity: 25.7–
226 100% and specificity: 80.3–100%; Table 2). This trend for higher diagnostic accuracy in
227 molecular- vs antigen-based RSV tests with analytical time ≤ 30 min was preserved in all but
228 one of the categories (specificity in the emergency department/outpatient setting) when the

229 sensitivity and specificity ranges were broken down by patient age and setting in which the
230 test was carried out (Table 2).

231 The sensitivity values of molecular-based tests was highest for those that detected RSV only
232 (93–100%), followed by RSV and influenza (66.7–100%), then multiplex (≥ 3 viruses
233 detected) platforms (62.5–100%; all Supplemental Table 3). Such summary statistics should
234 be interpreted with caution given the differences in sensitivity between different tests with
235 similar modalities and analytical times e.g., the cobas[®] Influenza A/B & RSV Assay (Roche
236 Diagnostics International Ltd) and the Xpert Xpress Flu/RSV (Cepheid) are both molecular-
237 based tests that detect RSV and influenza in ≤ 30 min; however, the sensitivity range reported
238 in the literature for each test is 94.2–100.0% and 66.7–98.1%, respectively (Supplemental
239 Table 4).

240 **Sensitivity and Specificity of CLIA-Waived Tests for RSV**

241 There was a variety of sensitivity and specificity ranges for the 14 RSV tests included in this
242 review that were assessed under CLIA guidance (Fig. 3). Sensitivity and specificity values
243 for all RSV tests included in the review are shown in Supplemental Table 4. For the CLIA-
244 waived RSV tests, there was a wide range of published sensitivity (25.7–100%) and
245 specificity values (86.8–100%; Table 3). The test with the highest range of sensitivity values
246 was the cobas Influenza A/B & RSV Assay (94.2% [95% confidence interval (CI) 87.9–97.9]
247 – 100.0% [95% CI 96.07–100.0]; Table 3) and the test with the highest range of specificity
248 values was the Xpert Xpress Flu/RSV (98.1% [95% CI 96.6–99.0] – 100% [95% CI 99.7–
249 100]; Table 3).

250 **DISCUSSION**

251 This scoping literature review summarized sensitivity and specificity values in the peer-
252 reviewed literature for commercially available sample-to-answer tests for RSV. We identified

253 a knowledge gap for studies of RSV tests conducted in adult-only populations or in outpatient
254 or household settings. Overall, RSV tests with analytical time ≤ 30 min had a greater
255 variability in published sensitivity values relative to RSV tests with analytical time > 30 min,
256 which could be partially attributed to the different diagnostic tools (antigen vs molecular)
257 used. Molecular-based rapid RSV tests had higher sensitivity and specificity ranges than
258 antigen-based RSV tests, which aligns with CDC guidance to use molecular testing for RSV
259 where available (11).

260 The results from this scoping literature review showed a notable gap in studies of diagnostic
261 accuracy of RSV tests in adults. Utilizing viral diagnostic testing in adult patients presenting
262 with symptoms of acute respiratory infection would improve current surveillance efforts and
263 allow for efficient triage and treatment decisions (e.g., local infection control guidance could
264 be followed in a timely manner). This could be particularly important for elderly patients who
265 are at a higher risk of hospitalization and death from RSV infection compared with younger
266 adults (30). Testing strategies for SARS-CoV-2 developed in response to the global COVID-
267 19 pandemic have undoubtedly brought diagnostics closer to the patient. With respect to RSV,
268 this review identified few published studies available on the diagnostic accuracy of tests in
269 outpatient or household settings. The nasopharyngeal shedding of RSV rapidly decreases 1–3
270 days after the onset of symptoms (31); therefore, accessible at-home or POC testing could be
271 a valuable tool in timely infection control.

272 Approximately half of all studies included in this review used a nasopharyngeal swab as the
273 majority specimen type. Notably, it has been shown that the diagnostic accuracy of some
274 types of RSV tests is dependent upon sample type. The sensitivity and specificity of
275 immunofluorescence-based RSV tests is higher in nasopharyngeal aspirates, relative to nasal
276 swabs (32, 33). However, there is no difference in test performance between aspirate and
277 swab specimens when using molecular-based RSV testing (32, 34). Additionally, mid-

278 turbinate nasal swabs have been shown to have a comparative viral load to nasopharyngeal
279 swabs in infants <2 years old (35) and are equally sensitive for the diagnosis of multiple
280 respiratory viruses in adults (36). The advantages of using a nasal swab rather than a
281 nasopharyngeal aspirate/swab are that it is less invasive for the patient and easier for clinical
282 staff to transport (32, 34).

283 The gold standard for RSV testing, rRT-PCR, was the most used comparator assay across all
284 the studies included in this review. The use of different reference standards has been shown
285 to affect the calculated sensitivity and specificity value of an index test; for example, a
286 significant increase in test sensitivity has been reported in the literature when
287 immunofluorescence is used as the reference standard compared with rRT-PCR (37).

288 A systematic review and meta-analysis of the sensitivity and specificity of RSV rapid
289 antigen-based tests by Chartrand et al. reported a pooled sensitivity and specificity of 80%
290 (95% CI 76–83) and 97% (95% CI 96–98), respectively (37). In addition, there was a large
291 disparity observed in sensitivity of RSV tests between studies in pediatric patients (81%
292 [95% CI 78–84]) and in adults (29% [95% CI 11–48]). In contrast, a systematic review by
293 Bruning et al. reported that age did not affect diagnostic accuracy of RSV tests; however, this
294 analysis only focused on three rapid RSV tests (BD Veritor System RSV, Sofia RSV FIA,
295 and Alere BinaxNOW RSV) (38). Furthermore, while RSV rapid antigen-based tests are
296 thought to be useful for diagnosis in infants, sensitivity values as low as 7.6% have been
297 reported for a particular brand of rapid antigen-based test in this age group (39).

298 In some clinical contexts, the use of multiplex tests for more than one respiratory virus may
299 increase efficiency in triaging patients presenting with symptoms of a respiratory tract
300 infection. Young et al. compared the turnaround time for two commercial brands of rapid
301 tests for influenza A and B and RSV. The turnaround time for the ID NOW RSV assay and

302 the ID NOW Influenza A and B assay was 6.4–15.8 min per test result vs 21.3–22.0 min for
303 the combined cobas Influenza A/B & RSV Assay (40). In addition to considering ‘time to
304 result’ for multiplex tests, users should also pay close attention to hands-on time when
305 implementing a new assay. Multiplex RSV tests such as the BioFire FilmArray Respiratory
306 2.1 Panel and the ePlex Respiratory Pathogen Panel, included in this review, can detect >20
307 infectious respiratory pathogens; however, these tests are not CLIA-waived and have a longer
308 turnaround time but may be extremely valuable in patients with severe disease where rapid
309 identification of the causative agent(s) in a simultaneous manner may be beneficial. In
310 addition, discrepancies in sensitivity between multiplex and RSV only rRT-PCR tests have
311 been reported in the literature; this could result in varying thresholds for different respiratory
312 viruses between different brands of multiplex rRT-PCR tests (41). The findings from our
313 review also showed that there are differences in the sensitivity and specificity values reported
314 for tests for RSV only relative to multiplex tests.

315 The evidence outlined in this paper highlights the need for healthcare professionals to
316 consider the spectrum of respiratory disease, not just SARS-CoV-2 or influenza, and consider
317 how viral diagnostic testing could inform their patient management and treatment decisions.
318 If clinicians do not test for RSV, it leads to selection bias and potentially an underestimation
319 of the prevalence of the virus. Most importantly, it could lead to inappropriate treatment for
320 the patient. Healthcare professionals should assess the benefits and drawbacks of each RSV
321 testing method and decide which would be most appropriate in their practice. Factors to
322 consider include the site of testing, the location of the testing instrument, the age and immune
323 status of the individual being tested, end user of the test, where the test results will be
324 analyzed, the clinical significance of the results, implications for infection control, and the
325 added value of a combination test result (40, 42).

326 One strength of this scoping review is its comprehensive and structured search strategy,
327 which has maximized the capture of relevant information. In addition, this review has
328 considered a broad spectrum of molecular and non-molecular RSV tests with different
329 analytical times. An inherent limitation of scoping reviews is that the data synthesis is based
330 on the values extracted from any given study; therefore, results may not be comparable in
331 terms of methodology, limiting the meaningful conclusions that can be drawn from
332 differences in the sensitivity and specificity between RSV tests from different studies.
333 However, the purpose of this scoping review was not to analyze but to summarize the
334 published data available.

335 Future research should assess the sensitivity and specificity of RSV tests in adult populations
336 and in outpatient and household settings. In addition, studies should control for selection bias
337 and adjust for differences in settings where the RSV test was performed, seasonality, and
338 staff utilization of RSV tests. The use of POC testing for influenza and RSV across four
339 centers in Denmark resulted in a significant reduction in antibiotic prescription and median
340 hospitalization time in adults (44.3 hours) and children (14.2 hours), there was also an
341 increase in the use of antiviral treatment in adults only (18). These positive results indicate
342 that further studies are warranted to explore the effects of testing for RSV on patient
343 outcomes (43).

344 In conclusion, different clinical situations (e.g., the clinical laboratory of a large hospital vs
345 an outpatient clinic) will require different diagnostic solutions. Given the higher sensitivity
346 and specificity of molecular-based testing over antigen-based modalities for RSV infection,
347 rRT-PCR tests should be considered for first-line use when possible. By summarizing the
348 sensitivity and specificity data available in the peer-reviewed literature for commercially
349 available RSV tests, this review provides a reference point for healthcare professionals to

350 investigate which test is suitable for their practice. Presently, there are several monoclonal
351 antibodies and vaccines in development for RSV prevention and some promising anti-viral
352 therapeutic agents for RSV treatment (44). The concurrent use of viral diagnostic testing will
353 be become increasingly important to identify the effectiveness and appropriateness of these
354 products in the future.

355 **Acknowledgments**

356 The authors would like to acknowledge Melanie Yarbrough (Washington University School
357 of Medicine, St. Louis, MO, USA) for her valuable input on the design of this literature
358 review. Support for study design and data analysis was provided by Heather Small, PhD,
359 Sophie Lavelle, MSc, and Claire Snowball, MSc, of Ashfield MedComms, Macclesfield, UK,
360 an Ashfield Health Company, and was funded by Roche Diagnostics International Ltd,
361 Rotkreuz, Switzerland. Medical writing support for the development of this manuscript,
362 under the direction of the authors, was provided by Heather Small, PhD, of Ashfield
363 MedComms, Macclesfield, UK, an Ashfield Health Company, and was funded by Roche
364 Diagnostics International Ltd, Rotkreuz, Switzerland. COBAS is a trademark of Roche. All
365 other product names and trademarks are the property of their respective owners.

366 **Funding**

367 This review was funded by Roche Diagnostics International Ltd, Rotkreuz, Switzerland.

368 **Ethics approval**

369 Ethical approval was not applicable for this review.

370 **Author contributions**

371 All authors contributed to the conceptualization of the study, the writing of the original draft
372 and reviewing and editing of subsequent manuscript drafts. DIB contributed to the formal
373 analysis and methodology of the study. JPD contributed to the data curation and supervision
374 of the study.

375 **Conflicts of interest**

376 DIB is a paid consultant for Roche Diagnostics. AM has received research grants from NIH,
377 Janssen and Merck and fees for participation in advisory boards from Janssen, Sanofi-Pasteur,
378 Merck and Roche Diagnostics. BR has received institutional funding support for research and
379 fees for participation in advisory boards from Roche Diagnostics and Quidel. CWW has
380 received grants from DARPA, NIH/ARLG, NIH/VTEU and Sanofi, consultant fees from
381 bioMerieux, Biofire, Giner, Biomeme, FHI Clinical, Arena Pharmaceuticals, SeLux
382 Diagnostics and Karius, fees from participation in a data safety monitoring board from
383 Janssen, and fees from participation in advisory boards from Regeneron and IDbyDNA; has
384 the following patents: biomarkers for the molecular classification of bacterial infection
385 (issued), methods to diagnose and treat acute respiratory infections (pending), gene
386 expression signatures useful to predict or diagnose sepsis (pending), host based molecular
387 signatures of human infection with SARs-CoV-2 (COVID-19) (pending) and methods of
388 identifying infectious disease and assays for identifying infectious disease (issued); holds
389 stocks in Predigen Inc (equity, founder); is employed by Duke University and Durham VA
390 Health Care System; and is the principal investigator for RADx UP testing Core. JPD is an
391 employee of Roche Diagnostics Corporation.

392 **Data availability**

393 The data supporting this review were derived from publicly available databases.

394 **References**

- 395 1. Paramore LC, Ciuryla V, Ciesla G, Liu L. Economic impact of respiratory syncytial
396 virus-related illness in the US: an analysis of national databases. *Pharmacoeconomics*
397 2004;22(5):275-84.
- 398 2. Li X, Willem L, Antillon M, Bilcke J, Jit M, Beutels P. Health and economic burden
399 of respiratory syncytial virus (RSV) disease and the cost-effectiveness of potential
400 interventions against RSV among children under 5 years in 72 Gavi-eligible countries.
401 *BMC Med* 2020;18(1):82.
- 402 3. Korsten K, Adriaenssens N, Coenen S, Butler C, Ravanfar B, Rutter H, et al. Burden
403 of respiratory syncytial virus infection in community-dwelling older adults in Europe
404 (RESCEU): an international prospective cohort study. *Eur Respir J*
405 2020;57(4):2002688.
- 406 4. Malosh RE, Martin ET, Callear AP, Petrie JG, Lauring AS, Lamerato L, et al.
407 Respiratory syncytial virus hospitalization in middle-aged and older adults. *J Clin*
408 *Virol* 2017;96:37-43.
- 409 5. Falsey AR, Hennessey PA, Formica MA, Cox C, Walsh EE. Respiratory syncytial
410 virus infection in elderly and high-risk adults. *N Engl J Med* 2005;352(17):1749-59.
- 411 6. Ackerson B, An J, Sy LS, Solano Z, Slezak J, Tseng HF. Cost of hospitalization
412 associated with respiratory syncytial virus infection versus influenza infection in
413 hospitalized older adults. *J Infect Dis* 2020;222(6):962-6.
- 414 7. Borchers AT, Chang C, Gershwin ME, Gershwin LJ. Respiratory syncytial virus--a
415 comprehensive review. *Clin Rev Allergy Immunol* 2013;45(3):331-79.
- 416 8. Falsey AR. Respiratory syncytial virus infection in adults. *Semin Respir Crit Care*
417 *Med* 2007;28(2):171-81.

- 418 9. Midgley CM, Haynes AK, Baumgardner JL, Chommanard C, Demas SW, Prill MM,
419 et al. Determining the seasonality of respiratory syncytial virus in the United States:
420 the impact of increased molecular testing. *J Infect Dis* 2017;216(3):345-55.
- 421 10. van de Pol AC, Wolfs TFW, Jansen NJG, van Loon AM, Rossen JWA. Diagnostic
422 value of real-time polymerase chain reaction to detect viruses in young children
423 admitted to the paediatric intensive care unit with lower respiratory tract infection.
424 *Critical Care* 2006;10(2):R61.
- 425 11. Centers for Disease Control and Prevention. Respiratory syncytial virus for healthcare
426 providers. <https://www.cdc.gov/rsv/clinical/index.html> (Accessed October 01, 2021).
- 427 12. Lee N, Walsh EE, Sander I, Stolper R, Zakar J, Wyffels V, et al. Delayed diagnosis of
428 respiratory syncytial virus infections in hospitalized adults: individual patient data,
429 record review analysis and physician survey in the United States. *J Infect Dis*
430 2019;220(6):969-79.
- 431 13. Bont L, Checchia PA, Fauroux B, Figueras-Aloy J, Manzoni P, Paes B, et al. Defining
432 the epidemiology and burden of severe respiratory syncytial virus infection among
433 infants and children in Western countries. *Infect Dis Ther* 2016;5(3):271-98.
- 434 14. Walsh EE. Respiratory syncytial virus infection: an illness for all ages. *Clin Chest*
435 *Med* 2017;38(1):29-36.
- 436 15. Staadegaard L, Caini S, Wangchuk S, Thapa B, de Almeida WAF, de Carvalho FC, et
437 al. The global epidemiology of RSV in community and hospitalized care: findings
438 from 15 countries. *Open Forum Infect Dis* 2021;8(7):ofab159.
- 439 16. Alchikh M, Conrad T, Hoppe C, Ma X, Broberg E, Penttinen P, et al. Are we missing
440 respiratory viral infections in infants and children? Comparison of a hospital-based
441 quality management system with standard of care. *Clin Microbiol Infect*
442 2019;25(3):380.e9-.e16.

- 443 17. Leonardi GP. Evaluation of rapid, molecular-based assays for the detection of
444 respiratory syncytial virus. *Intervirology* 2019;62(3-4):112-5.
- 445 18. Schneider UV, Holm MKA, Bang D, Petersen RF, Mortensen S, Trebbien R, et al.
446 Point-of-care tests for influenza A and B viruses and RSV in emergency departments
447 - indications, impact on patient management and possible gains by syndromic
448 respiratory testing, Capital Region, Denmark, 2018. *Euro Surveill*
449 2020;25(44):1900430.
- 450 19. Baker RE, Park SW, Yang W, Vecchi GA, Metcalf CJE, Grenfell BT. The impact of
451 COVID-19 nonpharmaceutical interventions on the future dynamics of endemic
452 infections. *Proc Natl Acad Sci U S A* 2020;117(48):30547-53.
- 453 20. Centers for Disease Control and Prevention. Increased interseasonal respiratory
454 syncytial virus (RSV) activity in parts of the Southern United States.
455 [https://emergency.cdc.gov/han/2021/pdf/CDC-HAN-443-Increased-Interseasonal-](https://emergency.cdc.gov/han/2021/pdf/CDC-HAN-443-Increased-Interseasonal-RSV-Activity-06.10.21.pdf)
456 [RSV-Activity-06.10.21.pdf](https://emergency.cdc.gov/han/2021/pdf/CDC-HAN-443-Increased-Interseasonal-RSV-Activity-06.10.21.pdf) (Accessed June 16, 2021).
- 457 21. Agha R, Avner JR. Delayed seasonal RSV surge observed during the COVID-19
458 pandemic. *Pediatrics* 2021;148(3):e2021052089.
- 459 22. von Hammerstein AL, Aebi C, Barbey F, Berger C, Buettcher M, Casaulta C, et al.
460 Interseasonal RSV infections in Switzerland - rapid establishment of a clinician-led
461 national reporting system (RSV EpiCH). *Swiss Med Wkly* 2021;151:w30057.
- 462 23. Foley DA, Yeoh DK, Minney-Smith CA, Martin AC, Mace AO, Sikazwe CT, et al.
463 The interseasonal resurgence of respiratory syncytial virus in Australian children
464 following the reduction of coronavirus disease 2019-related public health measures.
465 *Clin Infect Dis* 2021;73(9):e2829-2830.
- 466 24. Banerjee D, Kanwar N, Hassan F, Essmyer C, Selvarangan R. Comparison of six
467 sample-to-answer influenza A/B and respiratory syncytial virus nucleic acid

- 468 amplification assays using respiratory specimens from children. *J Clin Microbiol*
469 2018;56(11):e00930-18.
- 470 25. Barr R, Green CA, Sande CJ, Drysdale SB. Respiratory syncytial virus: diagnosis,
471 prevention and management. *Ther Adv Infect Dis* 2019;6:2049936119865798.
- 472 26. Centers for Disease Control and Prevention. About CLIA.
473 <https://www.cdc.gov/clia/about.html> (Accessed October 01, 2021).
- 474 27. Centers for Disease Control and Prevention. Test Complexities.
475 <https://www.cdc.gov/clia/test-complexities.html> (Accessed October 01, 2021).
- 476 28. Arksey H, O'Malley L. Scoping studies: towards a methodological framework. *Int J*
477 *Soc Res Methodol* 2005;8(1):19-32.
- 478 29. Tricco AC, Lillie E, Zarin W, O'Brien KK, Colquhoun H, Levac D, et al. PRISMA
479 Extension for Scoping Reviews (PRISMA-ScR): checklist and explanation. *Ann*
480 *Intern Med* 2018;169(7):467-73.
- 481 30. Watson A, Wilkinson TMA. Respiratory viral infections in the elderly. *Ther Adv*
482 *Respir Dis* 2021;15:1753466621995050.
- 483 31. Abels S, Nadal D, Stroehle A, Bossart W. Reliable detection of respiratory syncytial
484 virus infection in children for adequate hospital infection control management. *J Clin*
485 *Microbiol* 2001;39(9):3135-9.
- 486 32. Sung RYT, Chan PKS, Choi KC, Yeung ACM, Li AM, Tang JW, et al. Comparative
487 study of nasopharyngeal aspirate and nasal swab specimens for diagnosis of acute
488 viral respiratory infection. *J Clin Microbiol* 2008;46(9):3073-6.
- 489 33. Macfarlane P, Denham J, Assous J, Hughes C. RSV testing in bronchiolitis: which
490 nasal sampling method is best? *Arch Dis Child* 2005;90(6):634.
- 491 34. Abu-Diab A, Azzeh M, Ghneim R, Ghneim R, Zoughbi M, Turkuman S, et al.
492 Comparison between pernasal flocked swabs and nasopharyngeal aspirates for

- 493 detection of common respiratory viruses in samples from children. *J Clin Microbiol*
494 2008;46(7):2414-7.
- 495 35. Blaschke AJ, McKeivitt M, Ampofo K, Lewis T, Chai H, Guo Y, et al. A mid-
496 turbinate swab appears comparable to nasopharyngeal swabs for quantitative
497 detection of RSV in infants. *Open Forum Infect Dis* 2017;4(Suppl 1):S354-S5.
- 498 36. Larios OE, Coleman BL, Drews SJ, Mazzulli T, Borgundvaag B, Green K, et al. Self-
499 collected mid-turbinate swabs for the detection of respiratory viruses in adults with
500 acute respiratory illnesses. *PLoS One* 2011;6(6):e21335.
- 501 37. Chartrand C, Tremblay N, Renaud C, Papenburg J. Diagnostic accuracy of rapid
502 antigen detection tests for respiratory syncytial virus infection: systematic review and
503 meta-analysis. *J Clin Microbiol* 2015;53(12):3738-49.
- 504 38. Bruning AHL, Leeflang MMG, Vos J, Spijker R, de Jong MD, Wolthers KC, et al.
505 Rapid tests for influenza, respiratory syncytial virus, and other respiratory viruses: a
506 systematic review and meta-analysis. *Clin Infect Dis* 2017;65(6):1026-32.
- 507 39. Zuurbier RP, Bont LJ, Langedijk AC, Hamer M, Korsten K, Drysdale SB, et al. Low
508 Sensitivity of BinaxNOW RSV in Infants. *J Infect Dis* 2020;222(Suppl 7).
- 509 40. Young S, Phillips J, Griego-Fullbright C, Wagner A, Jim P, Chaudhuri S, et al.
510 Molecular point-of-care testing for influenza A/B and respiratory syncytial virus:
511 comparison of workflow parameters for the ID Now and cobas Liat systems. *J Clin*
512 *Pathol* 2020;73(6):328-34.
- 513 41. Alchikh M, Conrad T, Hoppe C, Ma X, Broberg E, Penttinen P, et al. Are we missing
514 respiratory viral infections in infants and children? Comparison of a hospital-based
515 quality management system with standard of care. *Clin Microbiol Infect*
516 2019;25(3):e9-.e16.

- 517 42. Kosack CS, Page A-L, Klatser PR. A guide to aid the selection of diagnostic tests.
518 Bull World Health Organ 2017;95(9):639-45.
- 519 43. Bordley WC, Viswanathan M, King VJ, Sutton SF, Jackman AM, Sterling L, et al.
520 Diagnosis and testing in bronchiolitis: a systematic review. Arch Pediatr Adolesc Med
521 2004;158(2):119-26.
- 522 44. Domachowske JB, Anderson EJ, Goldstein M. The future of respiratory syncytial
523 virus disease prevention and treatment. Infect Dis Ther 2021;10(Suppl 1):47-60.
- 524 45. Bell JJ, Anderson EJ, Greene WH, Romero JR, Merchant M, Selvarangan R.
525 Multicenter clinical performance evaluation of BD Veritor™ system for rapid
526 detection of respiratory syncytial virus. J Clin Virol 2014;61(1):113-7.
- 527 46. Bruning AHL, de Kruijf WB, van Weert H, Willems WLM, de Jong MD, Pajkrt D, et
528 al. Diagnostic performance and clinical feasibility of a point-of-care test for
529 respiratory viral infections in primary health care. Fam Pract 2017;34(5):558-63.
- 530 47. Cantais A, Mory O, Plat A, Giraud A, Pozzetto B, Pillet S. Analytical performances
531 of the BD Veritor™ System for the detection of respiratory syncytial virus and
532 influenzaviruses A and B when used at bedside in the pediatric emergency department.
533 J Virol Methods 2019;270:66-9.
- 534 48. Jonckheere S, Verfaillie C, Boel A, Van Vaerenbergh K, Vanlaere E, Vankeerberghen
535 A, et al. Multicenter evaluation of BD Veritor System and RSV K-SeT for rapid
536 detection of respiratory syncytial virus in a diagnostic laboratory setting. Diagn
537 Microbiol Infect Dis 2015;83(1):37-40.
- 538 49. Kanwar N, Hassan F, Nguyen A, Selvarangan R. Head-to-head comparison of the
539 diagnostic accuracies of BD Veritor™ System RSV and Quidel® Sofia® RSV FIA
540 systems for respiratory syncytial virus (RSV) diagnosis. J Clin Virol 2015;65:83-6.

- 541 50. Leonardi GP, Wilson AM, Dautz M, Zuretti AR. Evaluation of respiratory syncytial
542 virus (RSV) direct antigen detection assays for use in point-of-care testing. *J Virol*
543 *Methods* 2015;213:131-4.
- 544 51. Schwartz RH, Selvarangan R, Zissman EN. BD Veritor System respiratory syncytial
545 virus rapid antigen detection test: point-of-care results in primary care pediatric
546 offices compared with reverse transcriptase polymerase chain reaction and viral
547 culture methods. *Pediatr Emerg Care* 2015;31(12):830-4.
- 548 52. Borek AP, Clemens SH, Gaskins VK, Aird DZ, Valsamakis A. Respiratory syncytial
549 virus detection by Remel Xpect, Binax Now RSV, direct immunofluorescent staining,
550 and tissue culture. *J Clin Microbiol* 2006;44(3):1105-7.
- 551 53. Cruz AT, Cazacu AC, Greer JM, Demmler GJ. Performance of a rapid assay (Binax
552 NOW) for detection of respiratory syncytial virus at a children's hospital over a 3-year
553 period. *J Clin Microbiol* 2007;45(6):1993-5.
- 554 54. Jung BK, Choi SH, Lee JH, Lee J, Lim CS. Performance evaluation of four rapid
555 antigen tests for the detection of respiratory syncytial virus. *J Med Virol*
556 2016;88(10):1720-4.
- 557 55. Khanom AB, Velvin C, Hawrami K, Schutten M, Patel M, Holmes MV, et al.
558 Performance of a nurse-led paediatric point of care service for respiratory syncytial
559 virus testing in secondary care. *J Infect* 2011;62(1):52-8.
- 560 56. Liao RS, Tomalty LL, Majury A, Zoutman DE. Comparison of viral isolation and
561 multiplex real-time reverse transcription-PCR for confirmation of respiratory
562 syncytial virus and influenza virus detection by antigen immunoassays. *J Clin*
563 *Microbiol* 2009;47(3):527-32.
- 564 57. Miernyk K, Bulkow L, DeByle C, Chikoyak L, Hummel KB, Hennessy T, et al.
565 Performance of a rapid antigen test (Binax NOW® RSV) for diagnosis of respiratory

- 566 syncytial virus compared with real-time polymerase chain reaction in a pediatric
567 population. *J Clin Virol* 2011;50(3):240-3.
- 568 58. Moesker FM, van Kampen JJA, Aron G, Schutten M, van de Vijver D, Koopmans
569 MPG, et al. Diagnostic performance of influenza viruses and RSV rapid antigen
570 detection tests in children in tertiary care. *J Clin Virol* 2016;79:12-7.
- 571 59. Rack-Hoch AL, Laniado G, Hübner J. Comparison of influenza and RSV diagnostic
572 from nasopharyngeal swabs by rapid fluorescent immunoassay (Sofia system) and
573 rapid bedside testing (BinaxNOW) vs. conventional fluorescent immunoassay in a
574 German university children's hospital. *Infection* 2017;45(4):529-32.
- 575 60. Selvarangan R, Abel D, Hamilton M. Comparison of BD Directigen EZ RSV and
576 Binax NOW RSV tests for rapid detection of respiratory syncytial virus from
577 nasopharyngeal aspirates in a pediatric population. *Diagn Microbiol Infect Dis*
578 2008;62(2):157-61.
- 579 61. Sun Y, Deng J, Qian Y, Zhu R, Wang F, Tian R, et al. Laboratory evaluation of rapid
580 antigen detection tests for more-sensitive detection of respiratory syncytial virus
581 antigen. *Jpn J Infect Dis* 2019;72(6):394-8.
- 582 62. Voermans JJ, Seven-Deniz S, Fraaij PL, van der Eijk AA, Koopmans MP, Pas SD.
583 Performance evaluation of a rapid molecular diagnostic, MultiCode based, sample-to-
584 answer assay for the simultaneous detection of Influenza A, B and respiratory
585 syncytial viruses. *J Clin Virol* 2016;85:65-70.
- 586 63. Allen AJ, Gonzalez-Ciscar A, Lendrem C, Suklan J, Allen K, Bell A, et al. Diagnostic
587 and economic evaluation of a point-of-care test for respiratory syncytial virus. *ERJ*
588 *Open Res* 2020;6(3):00018-2020.

- 589 64. Banerjee D, Kanwar N, Hassan F, Lankachandra K, Selvarangan R. Comparative
590 analysis of four sample-to-answer influenza A/B and RSV nucleic acid amplification
591 assays using adult respiratory specimens. *J Clin Virol* 2019;118:9-13.
- 592 65. Gibson J, Schechter-Perkins EM, Mitchell P, Mace S, Tian Y, Williams K, et al.
593 Multi-center evaluation of the cobas(®) Liat(®) Influenza A/B & RSV assay for rapid
594 point of care diagnosis. *J Clin Virol* 2017;95:5-9.
- 595 66. Gosert R, Naegele K, Hirsch HH. Comparing the Cobas Liat Influenza A/B and
596 respiratory syncytial virus assay with multiplex nucleic acid testing. *J Med Virol*
597 2019;91(4):582-7.
- 598 67. Verbakel JY, Matheeußen V, Loens K, Kuijstermans M, Goossens H, Ieven M, et al.
599 Performance and ease of use of a molecular point-of-care test for influenza A/B and
600 RSV in patients presenting to primary care. *Eur J Clin Microbiol Infect Dis*
601 2020;39(8):1453-60.
- 602 68. Schnee SV, Pfeil J, Ihling CM, Tabatabai J, Schnitzler P. Performance of the Alere i
603 RSV assay for point-of-care detection of respiratory syncytial virus in children. *BMC*
604 *Infect Dis* 2017;17(1):767.
- 605 69. Hassan F, Hays LM, Bonner A, Bradford BJ, Franklin R, Jr., Hendry P, et al.
606 Multicenter clinical evaluation of the Alere i respiratory syncytial virus isothermal
607 nucleic acid amplification assay. *J Clin Microbiol* 2018;56(3):e01777-17.
- 608 70. Peters RM, Schnee SV, Tabatabai J, Schnitzler P, Pfeil J. Evaluation of Alere i RSV
609 for rapid detection of respiratory syncytial virus in children hospitalized with acute
610 respiratory tract infection. *J Clin Microbiol* 2017;55(4):1032-6.
- 611 71. Freeman MC, Haddadin Z, Lawrence L, Piya B, Krishnaswami S, Faouri S, et al.
612 Utility of RSV rapid diagnostic assays in hospitalized children in Amman, Jordan. *J*
613 *Med Virol* 2020;93:3420-7.

- 614 72. Mesquita FDS, Oliveira DBL, Crema D, Pinez CMN, Colmanetti TC, Thomazelli LM,
615 et al. Rapid antigen detection test for respiratory syncytial virus diagnosis as a
616 diagnostic tool. *J Pediatr (Rio J)* 2017;93(3):246-52.
- 617 73. Rath B, Tief F, Obermeier P, Tuerk E, Karsch K, Muehlhans S, et al. Early detection
618 of influenza A and B infection in infants and children using conventional and
619 fluorescence-based rapid testing. *J Clin Virol* 2012;55(4):329-33.
- 620 74. Gomez S, Prieto C, Folgueira L. A prospective study to assess the diagnostic
621 performance of the Sofia(®) Immunoassay for influenza and RSV detection. *J Clin*
622 *Virol* 2016;77:1-4.
- 623 75. Tran LC, Tournus C, Dina J, Morello R, Brouard J, Vabret A. SOFIA(®)RSV:
624 prospective laboratory evaluation and implementation of a rapid diagnostic test in a
625 pediatric emergency ward. *BMC Infect Dis* 2017;17(1):452.
- 626 76. Tuttle R, Weick A, Schwarz WS, Chen X, Obermeier P, Seeber L, et al. Evaluation of
627 novel second-generation RSV and influenza rapid tests at the point of care. *Diagn*
628 *Microbiol Infect Dis* 2015;81(3):171-6.
- 629 77. Cohen DM, Kline J, May LS, Harnett GE, Gibson J, Liang SY, et al. Accurate PCR
630 detection of influenza A/B and respiratory syncytial viruses by use of Cepheid Xpert
631 Flu+RSV Xpress assay in point-of-care settings: comparison to Prodesse ProFlu. *J*
632 *Clin Microbiol* 2018;56(2):e01237-17.
- 633 78. Haigh J, Cutino-Moguel MT, Wilks M, Welch CA, Melzer M. A service evaluation of
634 simultaneous near-patient testing for influenza, respiratory syncytial virus,
635 *Clostridium difficile* and norovirus in a UK district general hospital. *J Hosp Infect*
636 2019;103(4):441-6.
- 637 79. Wabe N, Lindeman R, Post JJ, Rawlinson W, Miao M, Westbrook JI, et al. Cepheid
638 Xpert(®) Flu/RSV and Seegene Allplex(™) RP1 show high diagnostic agreement for

- 639 the detection of influenza A/B and respiratory syncytial viruses in clinical practice.
640 Influenza Other Respir Viruses 2021;15:245-53.
- 641 80. Zou X, Chang K, Wang Y, Li M, Zhang W, Wang C, et al. Comparison of the
642 Cepheid Xpert Xpress Flu/RSV assay and commercial real-time PCR for the detection
643 of influenza A and influenza B in a prospective cohort from China. Int J Infect Dis
644 2019;80:92-7.
- 645 81. Ginocchio CC, Swierkosz E, McAdam AJ, Marcon M, Storch GA, Valsamakis A, et
646 al. Multicenter study of clinical performance of the 3M Rapid Detection RSV test. J
647 Clin Microbiol 2010;48(7):2337-43.
- 648 82. Munjal I, Gialanella P, Goss C, McKittrick JC, Avner JR, Pan Q, et al. Evaluation of
649 the 3M rapid detection test for respiratory syncytial virus (RSV) in children during the
650 early stages of the 2009 RSV season. J Clin Microbiol 2011;49(3):1151-3.
- 651 83. Juretschko S, Mahony J, Buller RS, Manji R, Dunbar S, Walker K, et al. Multicenter
652 clinical evaluation of the Luminex Aries Flu A/B & RSV assay for pediatric and adult
653 respiratory tract specimens. J Clin Microbiol 2017;55(8):2431-8.
- 654 84. Huang HS, Tsai CL, Chang J, Hsu TC, Lin S, Lee CC. Multiplex PCR system for the
655 rapid diagnosis of respiratory virus infection: systematic review and meta-analysis.
656 Clin Microbiol Infect 2018;24(10):1055-63.
- 657 85. Leber AL, Everhart K, Daly JA, Hopper A, Harrington A, Schreckenberger P, et al.
658 Multicenter evaluation of BioFire FilmArray Respiratory Panel 2 for detection of
659 viruses and bacteria in nasopharyngeal swab samples. J Clin Microbiol
660 2018;56(6):e01945-17.
- 661 86. Vos LM, Riezebos-Brilman A, Schuurman R, Hoepelman AIM, Oosterheert JJ.
662 Syndromic sample-to-result PCR testing for respiratory infections in adult patients.
663 Neth J Med 2018;76(6):286-93.

- 664 87. Aslanzadeh J, Zheng X, Li H, Tetreault J, Ratkiewicz I, Meng S, et al. Prospective
665 evaluation of rapid antigen tests for diagnosis of respiratory syncytial virus and
666 human metapneumovirus infections. *J Clin Microbiol* 2008;46(5):1682-5.
- 667 88. Vaz-de-Lima LR, Souza MC, Matsumoto T, Hong MA, Salgado MM, Barbosa ML, et
668 al. Performance of indirect immunofluorescence assay, immunochromatography assay
669 and reverse transcription-polymerase chain reaction for detecting human respiratory
670 syncytial virus in nasopharyngeal aspirate samples. *Mem Inst Oswaldo Cruz*
671 2008;103(5):463-7.
- 672 89. Goodrich JS, Miller MB. Comparison of Cepheid's analyte-specific reagents with BD
673 directigen for detection of respiratory syncytial virus. *J Clin Microbiol*
674 2007;45(2):604-6.
- 675 90. Babady NE, England MR, Jurcic Smith KL, He T, Wijetunge DS, Tang YW, et al.
676 Multicenter evaluation of the ePlex Respiratory Pathogen Panel for the detection of
677 viral and bacterial respiratory tract pathogens in nasopharyngeal swabs. *J Clin*
678 *Microbiol* 2018;56(2):e01658-17.
- 679 91. Sam SS, Caliendo AM, Ingersoll J, Abdul-Ali D, Hill CE, Kraft CS. Evaluation of
680 performance characteristics of Panther Fusion Assays for detection of respiratory
681 viruses from nasopharyngeal and lower respiratory tract specimens. *J Clin Microbiol*
682 2018;56(8):e00787-18.
- 683 92. Pichon M, Valette M, Schuffenecker I, Billaud G, Lina B. Analytical performances of
684 the Panther Fusion System for the detection of respiratory viruses in the French
685 National Reference Centre of Lyon, France. *Microorganisms* 2020;8(9):1371.
- 686 93. Stellrecht KA, Cimino JL, Wilson LI, Maceira VP, Butt SA. Panther Fusion®
687 respiratory virus assays for the detection of influenza and other respiratory viruses. *J*
688 *Clin Virol* 2019;121:104204.

- 689 94. Voermans JJC, Mulders D, Pas SD, Koopmans MPG, van der Eijk AA, Molenkamp
690 R. Performance evaluation of the Panther Fusion® respiratory tract panel. J Clin Virol
691 2020;123:104232.
- 692 95. Landry ML, Ferguson D. Comparison of Simplexa Flu A/B & RSV PCR with
693 cytospin-immunofluorescence and laboratory-developed TaqMan PCR in
694 predominantly adult hospitalized patients. J Clin Microbiol 2014;52(8):3057-9.
- 695
- 696

697 TABLES

Table 1. Characteristics of all included studies.			
Study characteristic	RSV tests with	RSV tests with	Total sub-records^a, n (%)
	analytical time	analytical time	
	≤30 min, n (%)	>30 min, n (%)	
Number of sub-records	88 (66.2)	45 (33.8)	133 (100.0)
Commercial index test^b			
3M Rapid Detection RSV Test	4 (4.5)	–	4 (3.0)
Aries Flu A/B & RSV Assay	–	4 (8.9)	4 (3.0)
BD Veritor System RSV	9 (10.2)	–	9 (6.8)
Alere BinaxNOW RSV	14 (15.9)	–	14 (10.5)
BioFire FilmArray Respiratory 2.1 Panel	–	4 (8.9)	4 (3.0)
cobas Influenza A/B & RSV Assay	10 (11.4)	–	10 (7.5)
Directigen EZ RSV	8 (9.1)	–	8 (6.0)
ePlex Respiratory Pathogen Panel	–	3 (6.7)	3 (2.3)
ID NOW RSV ^c	5 (5.7)	–	5 (3.8)
mariPOC Respi test	–	4 (8.9)	4 (3.0)
Panther Fusion Flu	–	7 (15.6)	7 (5.3)

A/B/RSV Assay			
QuickVue RSV	4 (4.5)	–	4 (3.0)
RSV Respi-Strip	3 (3.4)	–	3 (2.3)
Simplexa Flu A/B & RSV	–	3 (6.7)	3 (2.3)
Sofia RSV FIA	11 (12.5)	–	11 (8.3)
Xpert Flu/RSV XC	3 (3.4)	–	3 (2.3)
Xpert Xpress Flu/RSV	6 (6.8)	–	6 (4.5)
Data collection			
Prospective	64 (72.7)	19 (42.2)	83 (62.4)
Retrospective	17 (19.3)	16 (35.6)	33 (24.8)
Mixed	7 (8.0)	10 (22.2)	17 (12.8)
Population			
Adults (≥ 18 years)	1 (1.1)	6 (13.3)	7 (5.3)
Children (< 18 years)	43 (48.9)	8 (17.8)	51 (38.3)
Mixed	41 (46.6)	25 (55.6)	66 (49.6)
Not reported	3 (3.4)	6 (13.3)	9 (6.8)
Comparator test			
DFA/IFA	9 (10.3)	3 (6.7)	12 (9.0)
rRT-PCR	58 (65.9)	33 (73.3)	91 (68.4)
Viral culture	5 (5.7)	2 (4.4)	7 (5.3)
Mixed	16 (18.2)	5 (11.1)	21 (15.8)
Other ^d	0	2 (4.4)	2 (1.5)
Industry sponsorship			
Yes	52 (59.1)	35 (77.8)	87 (65.4)
No	23 (26.1)	7 (15.6)	30 (22.6)

Not reported	13 (14.8)	3 (6.7)	16 (12.0)
Majority specimen type			
Nasopharyngeal aspirate or wash	22 (25.0)	6 (13.3)	28 (21.1)
Nasopharyngeal swab	43 (48.9)	22 (48.9)	65 (48.9)
Nasopharyngeal aspirate or swab	1 (1.1)	0	1 (0.8)
Nasopharyngeal specimen	1 (1.1)	-	1 (0.8)
Nasal aspirate or wash	4 (4.5)	1 (2.2)	5 (3.8)
Nasal swab	1 (1.1)	0	1 (0.8)
Mixed	16 (18.2)	16 (35.6)	32 (24.1)
Setting of patient recruitment			
Emergency department	5 (5.7)	4 (8.9)	9 (6.8)
Hospital	35 (39.8)	21 (46.7)	56 (42.1)
Household	0	1 (2.2)	1 (0.8)
Outpatient	5 (5.7)	5 (11.1)	10 (7.5)
Mixed	37 (42.0)	9 (20.0)	46 (34.6)
Not reported	6 (6.8)	5 (11.1)	11 (8.3)
Setting where test was performed			
Clinical laboratory	26 (29.5)	29 (64.4)	55 (41.4)
POC	46 (52.3)	5 (11.1)	51 (38.3)
Research laboratory	2 (2.3)	2 (4.4)	4 (3.0)
Mixed	10 (11.4)	0	10 (7.5)

Not reported	4 (4.5)	9 (20.0)	13 (9.8)
<p>^aWhere one article reported several relevant sensitivity and specificity values (e.g., when more than one index test was studied), then each set of sensitivity and specificity values was extracted as a ‘sub-record’; 77 included studies corresponded to 133 included sub-records.</p> <p>^bOnly RSV tests with ≥ 3 sub-records were included in the table. The following index tests had two supporting sub-records: CLART PneumoVir, nCounter, NxTAG-Respiratory Pathogen Panel, MultiCode-PLx Respiratory Viral Panel, QIAstat-Dx Respiratory Panel, Simprova-RV, NucliSens EasyQ Respiratory Syncytial Virus A+B assay, Thermo Electron RSV OIA kit, Verigene Respiratory Virus Plus Nucleic Acid Test. The following index tests had one supporting sub-record: Allplex Respiratory Panel 1, Colloidal Gold Genesis, GenRead RSV, Humasis RSV Antigen Test, Magicplex RV Panel Real-Time Test, Prodesse ProFlu+ Assay, RSV K-SeT, Seeplex RV15 OneStep ACE Detection, Bionline RSV, Solana RSV + hMPV, Speed-Oligo RSV, TRU RSV, Xpect RSV.</p> <p>^cThe ID NOW RSV was formerly known as the Alere i RSV.</p> <p>^d‘Other’ comparator test was the consensus result for all three index tests studied (i.e., a ratio of 2:1 positive to negative results was considered a positive result and vice versa). DFA, direct fluorescent antibody test; FIA, fluorescence immunoassay; IFA, immunofluorescence assay; POC, point-of-care; RSV, respiratory syncytial virus; rRT-PCR, real-time reverse transcription-polymerase chain reaction.</p>			

698

699

Table 2. Sensitivity and specificity of RSV tests by assay technology in all included studies.			
	RSV tests with analytical time ≤30 min (n = 88)		RSV tests with analytical time >30 min (n = 45)
Method	Antigen	Molecular	Molecular
Number of sub-records, n (%)	61 (69.3)	27 (30.7)	41 (91.1) ^a
Overall			
Sensitivity, %	25.7–100	66.7–100	62.5–100
Specificity, %	80.3–100	94.3–100	77.0–100
Age			
<18 years			
Sensitivity, %	25.7–97.6	84.3–100	74.3–100
Specificity, %	80.3–100	94.3–100	97.8–100
≥18 years			
Sensitivity, % ^b	-	-	62.5–100
Specificity, % ^b	-	-	98.9–100
Mixed age			
Sensitivity, %	57.5–100	77.8–100	63.2–100
Specificity, %	91.8–100	94.7–100	77.0–100
Setting			
Inpatient			
Sensitivity, %	25.7–95.2	98.1–100	80.4–100
Specificity, %	80.3–100	94.3–99.4	91.5–100

Emergency department/outpatient			
Sensitivity, %	67.8–97.6	93–100	62.5–100
Specificity, %	97.6–99.6	96–100	97.8–100

^aThe mariPOC Respi test (n = 4 sub-records) was included in the RSV tests with analytical time >30 min category as the final result is available after 2 hours. The sensitivity and specificity values were not included in the table as there were insufficient data to produce a range of sensitivity or specificity values for relevant patient and setting characteristics.

^bOnly one study assessed an RSV test with analytical time ≤30 min in an adult (≥18 years) only population; therefore, it was not possible to produce a range of sensitivity or specificity values.

RSV, respiratory syncytial virus.

Table 3. Sensitivity and specificity of RSV tests reviewed under CLIA guidance only.

Test	Manufacturer	Technology	Analytical time (min)	Sample type	Age of intended patient population	Sensitivity range, % (95% CI)	Specificity range, % (95% CI)	References
Waived								
BD Veritor System RSV	Becton, Dickinson and Company	Antigen	10	Nasopharyngeal swab	<6 years	67.5 (56.1–77.6) – 97.6 (NR)	96.8 (91.1–99.3) – 100 (97.0–100)	(45-51)
Alere Binax NOW RSV	Abbott	Antigen	15	Nasopharyngeal swab and nasopharyngeal aspirate/wash	<5 years	41.2 (NR) – 90 (NR)	93.2 (92.8–93.6) – 100.0 (97–100)	(37, 38, 52-62)
cobas Influenza A/B & RSV Assay	Roche Diagnostics	Molecular	20	Nasopharyngeal swab	Not specified	94.2 (87.9–97.9) – 100.0 (96.07–100.0)	94.29 (86.01–98.42) – 100 (97.7–100)	(17, 24, 63-67)

ID NOW RSV ^a	Abbott	Molecular	13	Nasopharyngeal swab	<18 years and ≥60 years	93 (89–96) – 100 (93–100)	96 (93–98) – 98.0 (95.8–99.1)	(17, 68-70)
QuickVue RSV	Quidel	Antigen	15	Nasopharyngeal swab and nasopharyngeal aspirate and/or nasal wash	≤18 years	25.7 (NR) – 90.1 (86.8–93.4)	98.5 (NR) – 99.5 (92–99)	(50, 71-73)
Sofia RSV FIA	Quidel	Antigen	15	Nasopharyngeal swab and nasopharyngeal aspirate/wash	<19 years	74.8 (68.0–80.9) – 100 (82–100)	86.8 (85.7–87.4) – 100 (95.2–100)	(38, 49, 50, 59, 61, 74- 76)
Xpert Xpress Flu/RSV	Cepheid	Molecular	30	Nasopharyngeal swab and/or nasal swab	Not specified	66.7 (24.1–94.0) – 98.1 (88.8–99.9)	98.1 (96.6–99.0) – 100 (99.7–100)	(24, 77-80)
Moderate complexity								

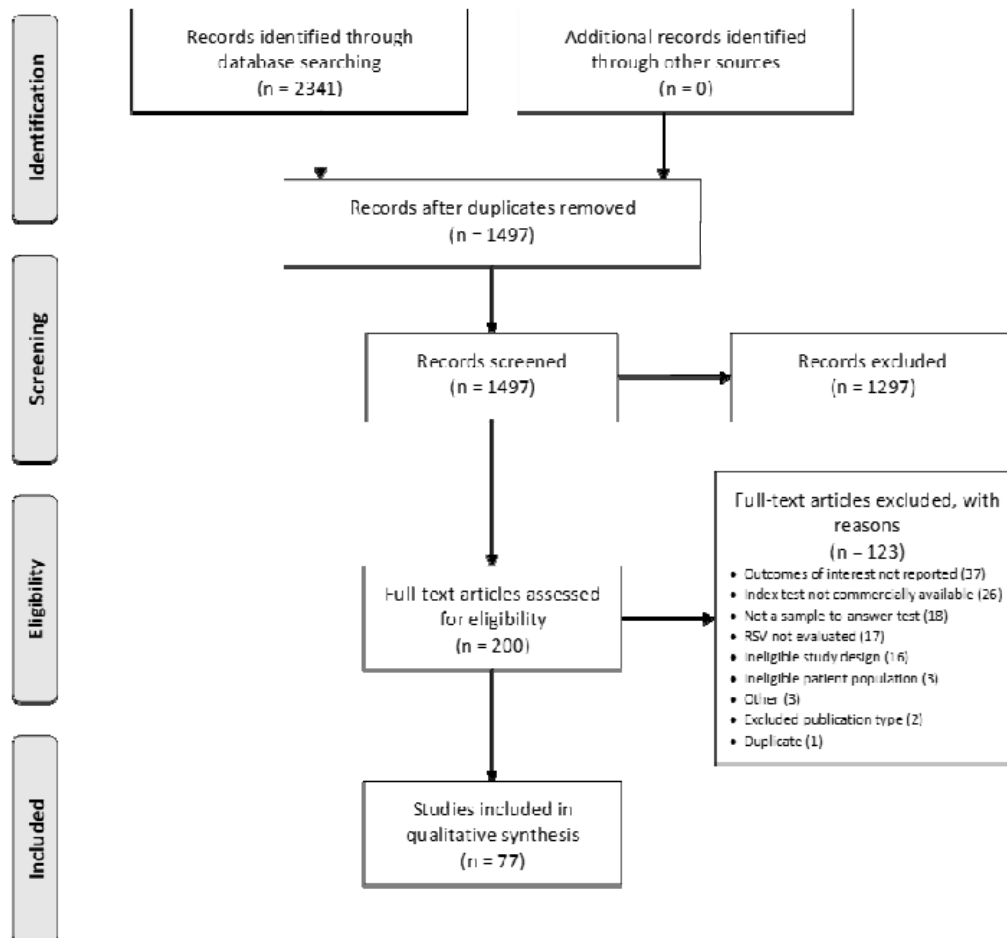
3M Rapid Detection RSV Test	3M Health Care	Antigen	15	Nasopharyngeal swab and nasopharyngeal aspirate and/or nasal wash	≤ 21 years	60.0 (38.5–81.5) – 87.3 (83.8–90.1)	95.6 (93.8–96.9) – 99.6 (98.7–100)	(81, 82)
Aries Flu A/B & RSV Assay BioFire FilmArray Respiratory 2.1 Panel	Luminex Corporation	Molecular	120	Nasopharyngeal swab	Not specified	88.6 (58.3–97.6) – 97.1 (94.4–98.7)	98.4 (97.7–98.9) – 100.0 (98.8–100)	(24, 62, 64, 83)
Directigen EZ RSV	Becton, Dickinson and Company	Antigen	15	Not specified	<20 years	59 (NR) – 90 (NR)	89.5 (NR) – 99.5 (97.0–100)	(37, 50, 60, 87-89)
ePlex Respiratory Pathogen	GenMark Diagnostics	Molecular	120	Nasopharyngeal swab	Not specified	89.6 (80.0–94.8) – 100 (92.6–100)	98.9 (94.2–99.8) – 100 (99.8–100)	(90, 91)

Panel								
High complexity								
Panther Fusion Flu A/B/RSV Assay	Hologic, Inc.	Molecular	Not reported	Nasopharyngeal swab	Not specified	88.4 (81.1–93.1)	98.7 (97.0–99.6)	(24, 64, 91-94)
Simplexa Flu A/B & RSV						100 (NR)	100 (99.7–100)	
	Diasorin Molecular	Molecular	60	Nasopharyngeal swab	Not specified	73.3 (44.8–91.0)	99.4 (96.3–99.9)	(24, 64, 95)
						87.0 (74.5–94.2)	100 (98.9–100)	
Sensitivity and specificity ranges were not reported for RSV tests with <3 supporting sub-records.								
*The ID NOW RSV was formerly known as the Alere i RSV.								
CI, confidence interval; CLIA, Clinical Laboratory Improvement Amendments; FIA, fluorescence immunoassay; NR, not reported; RSV, respiratory syncytial virus.								

700

701 **FIGURES**

702 **Fig. 1. Flow chart summarizing data sources and study selection.**



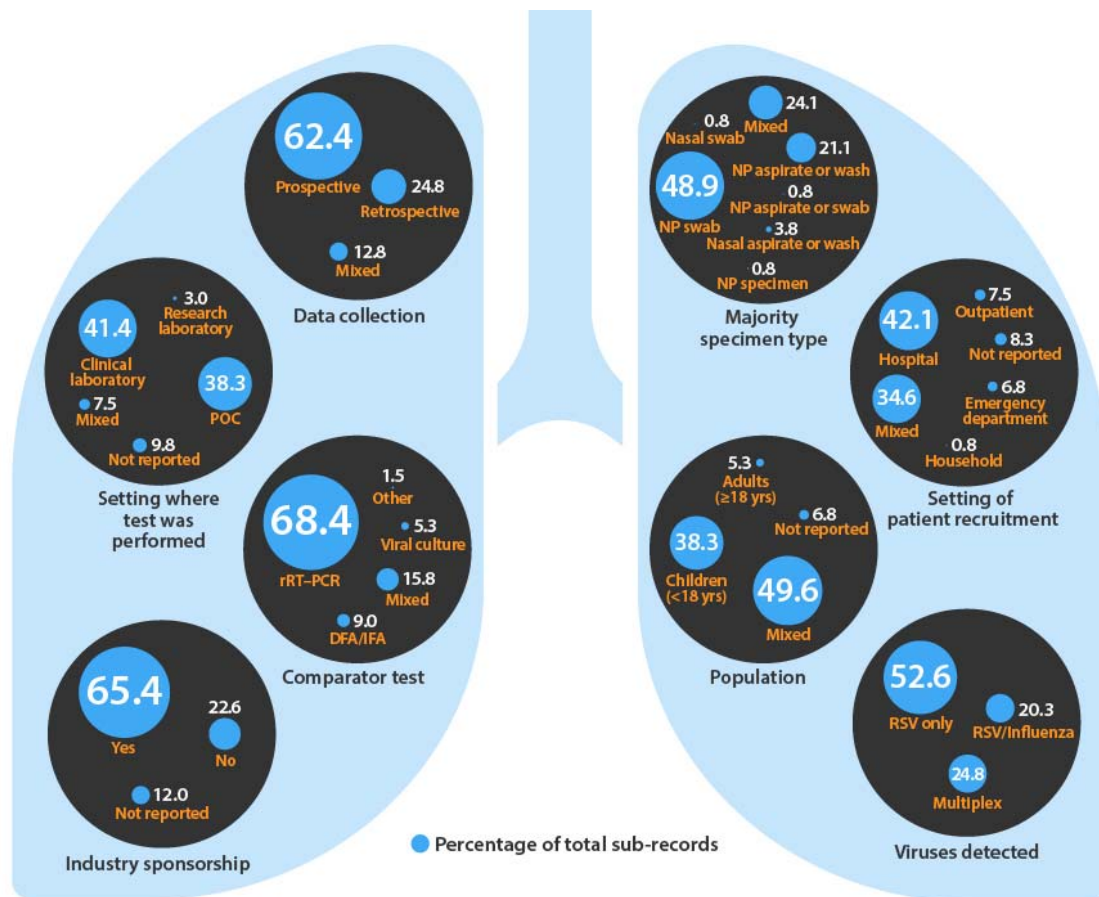
703

704 Duplicate articles and ineligible publication types were excluded at the ‘Screening’ step
705 (n=1297). Where one article reported several relevant sensitivity and specificity values (e.g.,
706 when more than one RSV test was studied), then each test was extracted as a sub-record. The
707 77 included studies corresponded to 133 included sub-records. RSV, respiratory syncytial
708 virus.

709

710

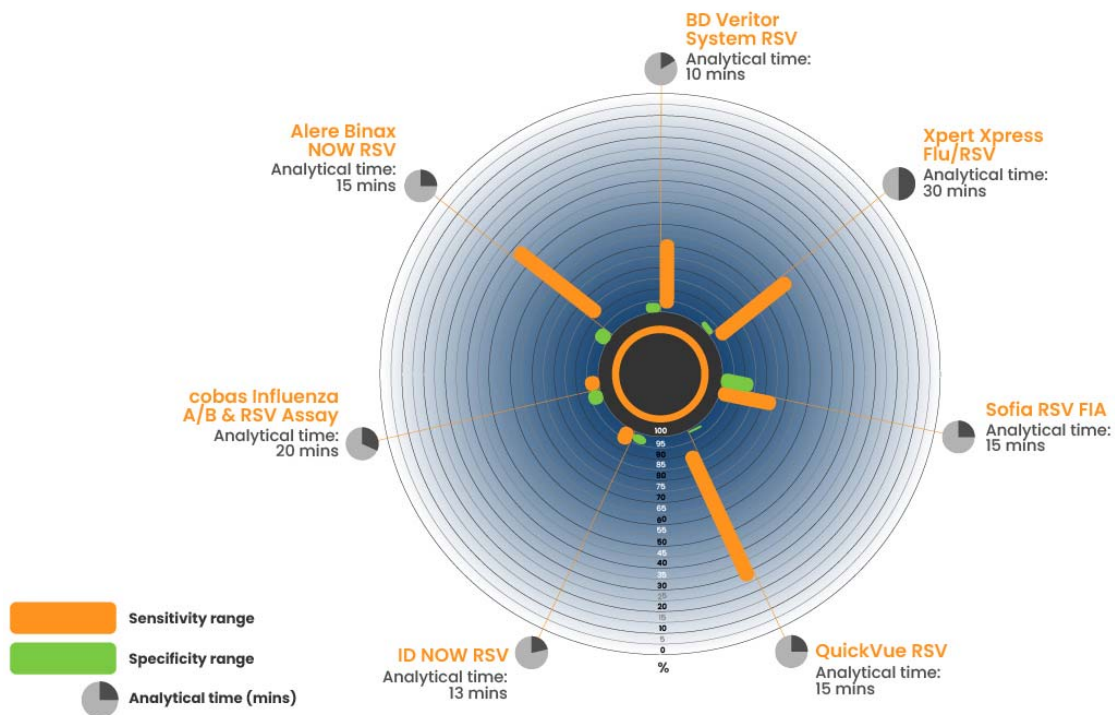
711 **Fig. 2. Trends in study design, patient, and setting characteristics in studies included in**
 712 **the review.**



713
 714 DFA, direct fluorescent antibody test; IFA, immunofluorescence assay; NP, nasopharyngeal;
 715 POC, point-of-care; RSV, respiratory syncytial virus; rRT-PCR, real-time reverse
 716 transcription-polymerase chain reaction.

717 **Fig. 3. Sensitivity and specificity of RSV tests under CLIA guidance.**

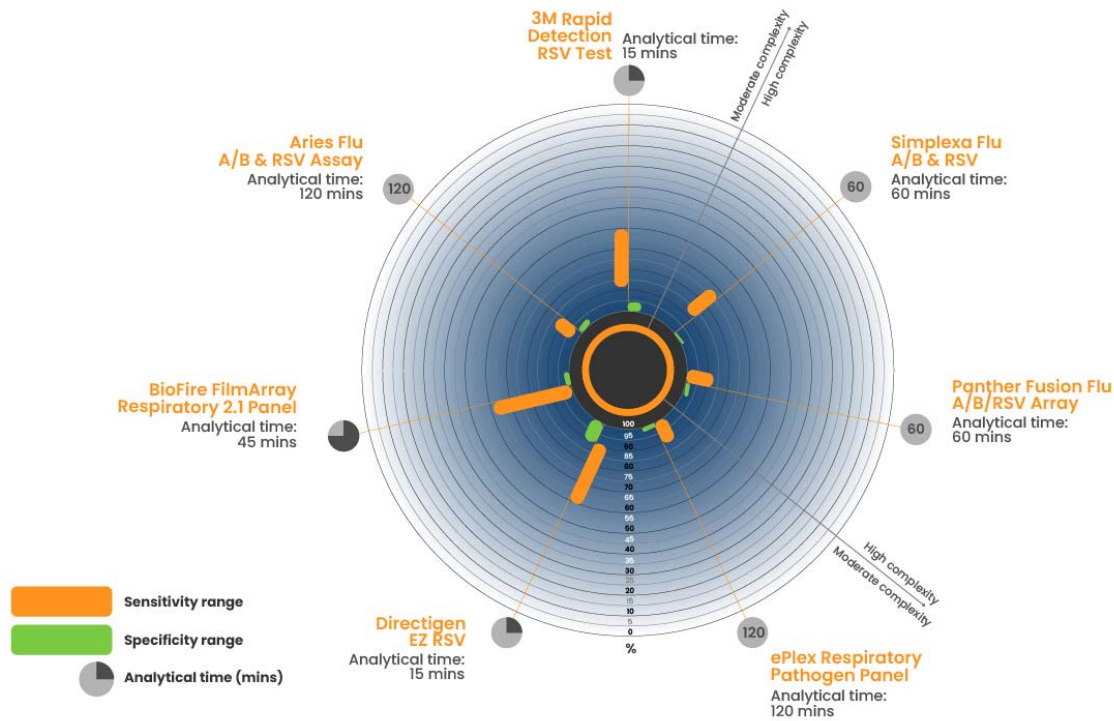
718 **A**



719

720

721 **B**



722

723 The sensitivity, specificity and analytical time are shown for the RSV tests included in this

724 review that were CLIA-waived (A) and classed as moderate/high complexity (B). RSV,

725 respiratory syncytial virus.