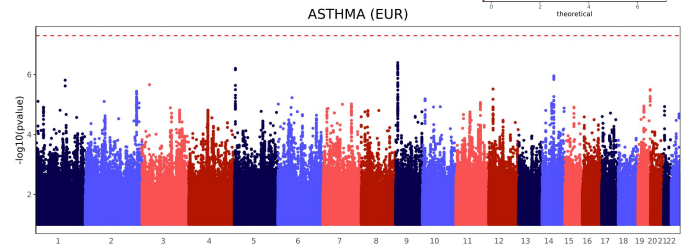
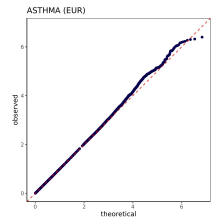


Supplementary Figure S4

Summary of GWAS across 7 traits and 4 ancestry groups. We provide Manhattan plots and QQ-plots for each GWAS. The red horizontal line in the Manhattan plots denotes genome-wide significance (p -value $< 5e-8$). SNPs that reach genome-wide significance are shaded in dark blue on the QQ-plot. We also provide the number of SNPs that have non-NA p -values, the number of SNPs that reach nominal (p -value < 0.05) and genome-wide significance.

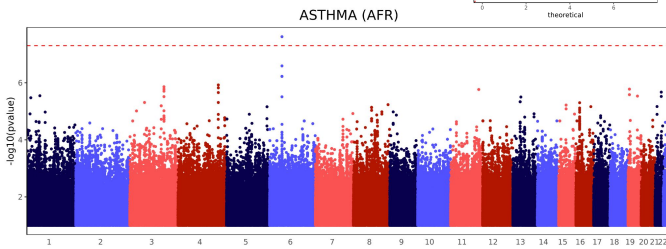
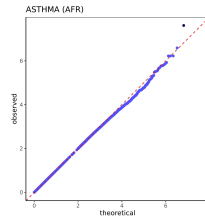
Supplementary Figure S5A: Asthma, EUR

Cases vs. Controls: 3051, 13590
Number of SNPs: 6859892
Number of significant SNPs ($5e-8$): 0
Number of nominally significant SNPs (0.05): 340303
Lambda GC: 0.99



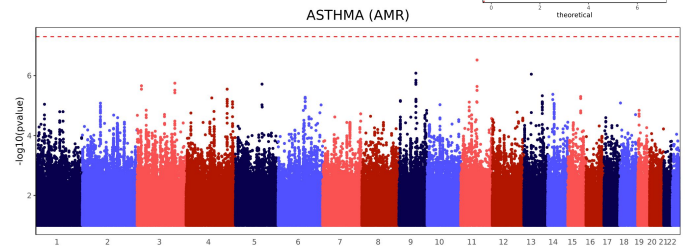
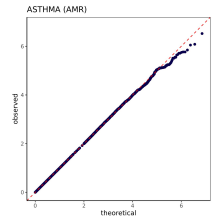
Supplementary Figure S5B: Asthma, AFR

Cases vs. Controls: 289, 937
Number of SNPs: 6557250
Number of significant SNPs ($5e-8$): 1
Number of nominally significant SNPs (0.05): 319378
Lambda GC: 0.99



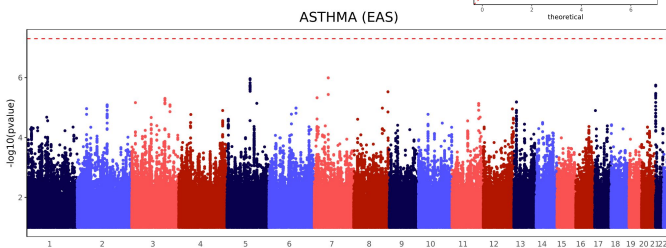
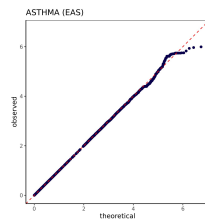
Supplementary Figure S5C: Asthma, AMR

Cases vs. Controls: 760, 3615
Number of SNPs: 7055126
Number of significant SNPs ($5e-8$): 0
Number of nominally significant SNPs (0.05): 341269
Lambda GC: 0.97



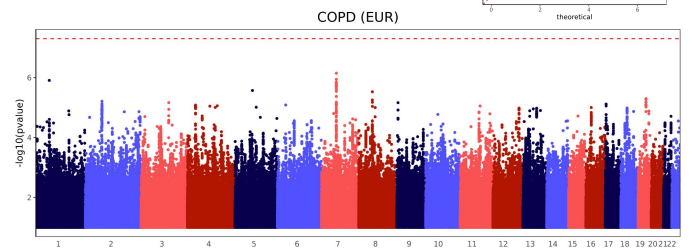
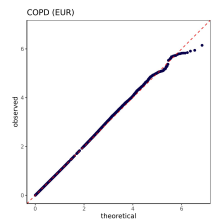
Supplementary Figure S5D: Asthma, EAS

Cases vs. Controls: 308, 1992
Number of SNPs: 5396472
Number of significant SNPs ($5e-8$): 0
Number of nominally significant SNPs (0.05): 262955
Lambda GC: 0.98



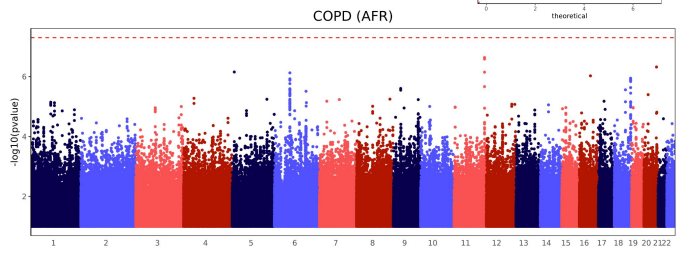
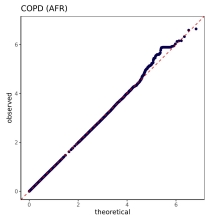
Supplementary Figure S5E: COPD, EUR

Cases vs. Controls: 2005, 14636
Number of SNPs: 6850600
Number of significant SNPs ($5e-8$): 0
Number of nominally significant SNPs (0.05): 339124
Lambda GC: 0.99



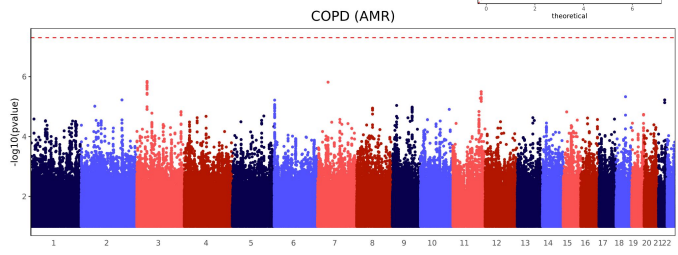
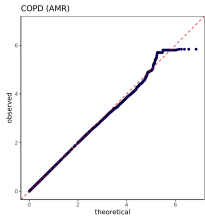
Supplementary Figure S5F: COPD, AFR

Cases vs. Controls: 187, 1039
 Number of SNPs: 6528611
 Number of significant SNPs (5e-8): 0
 Number of nominally significant SNPs (0.05): 315167
 Lambda GC: 0.98



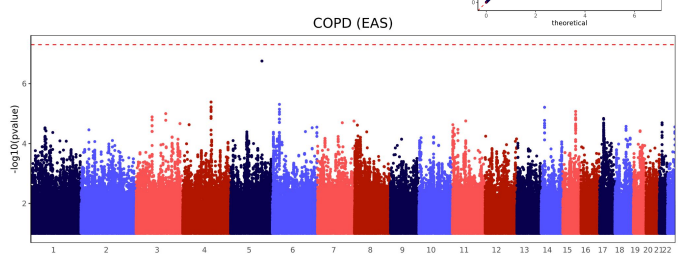
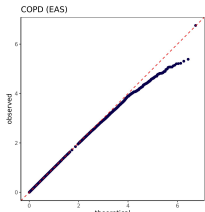
Supplementary Figure S5G: COPD, AMR

Cases vs. Controls: 384, 3991
 Number of SNPs: 7014983
 Number of significant SNPs (5e-8): 0
 Number of nominally significant SNPs (0.05): 334510
 Lambda GC: 0.96



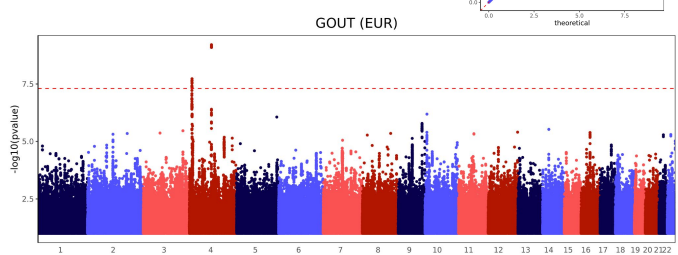
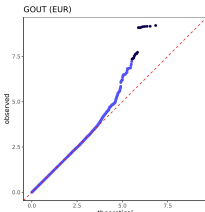
Supplementary Figure S5H: COPD, EAS

Cases vs. Controls: 208, 2092
 Number of SNPs: 5367966
 Number of significant SNPs (5e-8): 0
 Number of nominally significant SNPs (0.05): 260451
 Lambda GC: 0.99



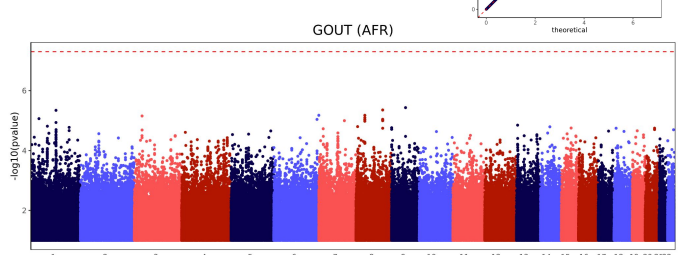
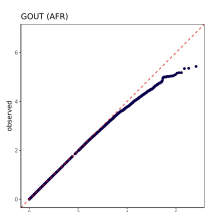
Supplementary Figure S5I: GOUT, EUR

Cases vs. Controls: 810, 15831
 Number of SNPs: 6824341
 Number of significant SNPs (5e-8): 20
 Number of nominally significant SNPs (0.05): 332499
 Lambda GC: 0.98



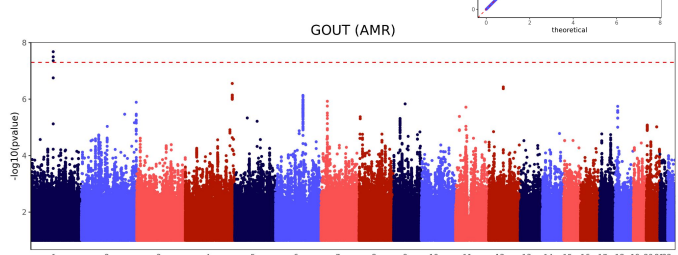
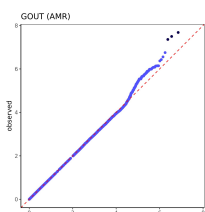
Supplementary Figure S5J: GOUT, AFR

Cases vs. Controls: 105, 1121
 Number of SNPs: 6428878
 Number of significant SNPs (5e-8): 0
 Number of nominally significant SNPs (0.05): 311707
 Lambda GC: 0.98



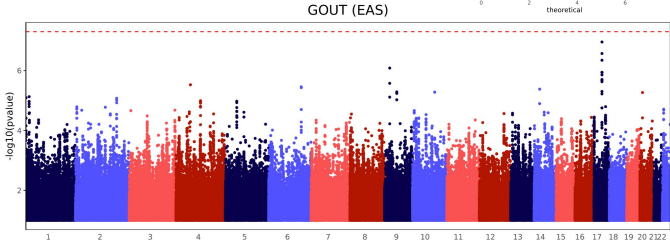
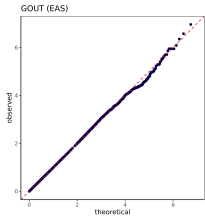
Supplementary Figure S5K: GOUT, AMR

Cases vs. Controls: 179, 4196
 Number of SNPs: 6946694
 Number of significant SNPs (5e-8): 3
 Number of nominally significant SNPs (0.05): 327952
 Lambda GC: 0.95



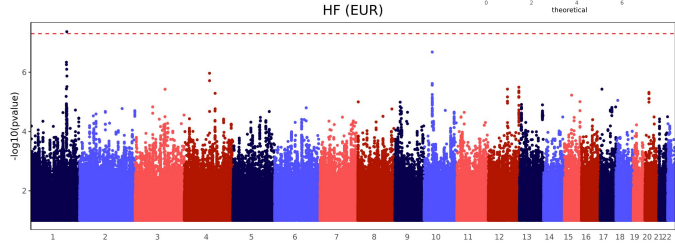
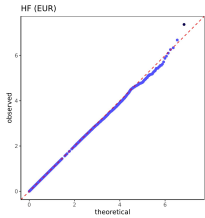
Supplementary Figure S5L: GOUT, EAS

Cases vs. Controls: 155, 2145
 Number of SNPs: 5353230
 Number of significant SNPs (5e-8): 0
 Number of nominally significant SNPs (0.05): 259466
 Lambda GC: 0.98



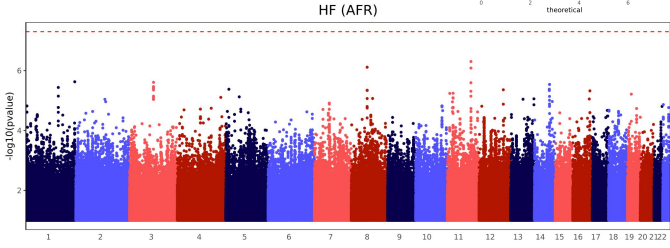
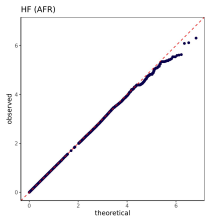
Supplementary Figure S5M: HF, EUR

Cases vs. Controls: 1301, 15340
 Number of SNPs: 6835981
 Number of significant SNPs (5e-8): 1
 Number of nominally significant SNPs (0.05): 331949
 Lambda GC: 0.99



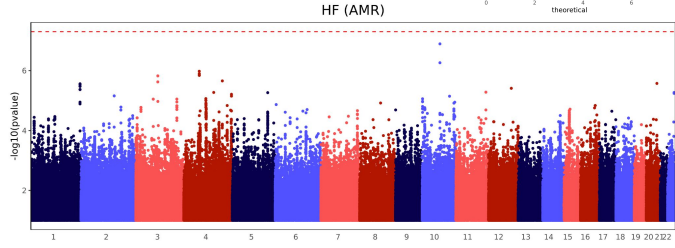
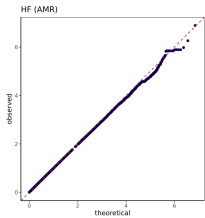
Supplementary Figure S5N: HF, AFR

Cases vs. Controls: 174, 1052
 Number of SNPs: 6515405
 Number of significant SNPs (5e-8): 0
 Number of nominally significant SNPs (0.05): 314043
 Lambda GC: 0.98



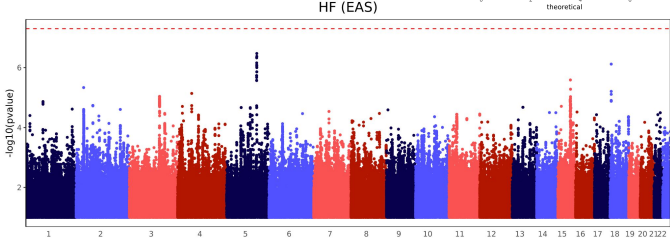
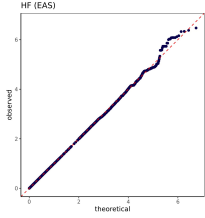
Supplementary Figure S5O: HF, AMR

Cases vs. Controls: 423, 3952
 Number of SNPs: 6989341
 Number of significant SNPs (5e-8): 0
 Number of nominally significant SNPs (0.05): 332637
 Lambda GC: 0.98



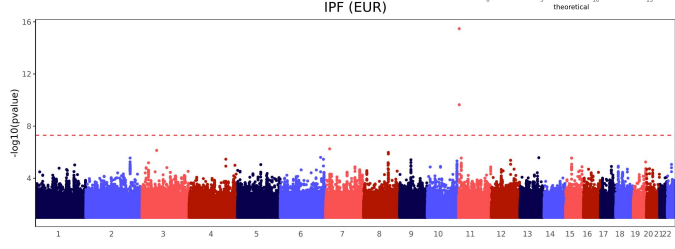
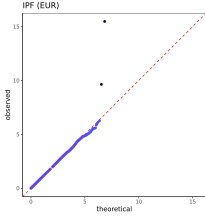
Supplementary Figure S5P: HF, EAS

Cases vs. Controls: 144, 2156
 Number of SNPs: 5396283
 Number of significant SNPs (5e-8): 0
 Number of nominally significant SNPs (0.05): 259905
 Lambda GC: 0.98



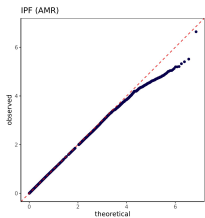
Supplementary Figure S5Q: IPF, EUR

Cases vs. Controls: 700, 15941
 Number of SNPs: 6825652
 Number of significant SNPs (5e-8): 2
 Number of nominally significant SNPs (0.05): 327434
 Lambda GC: 0.99

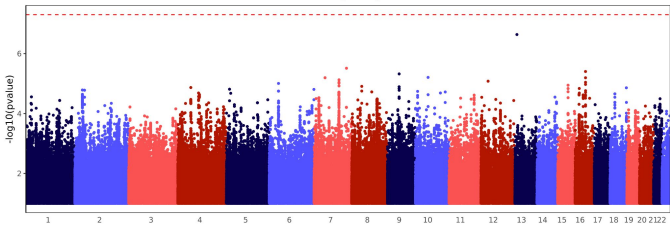


Supplementary Figure S5R: IPF, AMR

Cases vs. Controls: 204, 4171
 Number of SNPs: 6842352
 Number of significant SNPs (5e-8): 0
 Number of nominally significant SNPs (0.05): 323123
 Lambda GC: 0.96

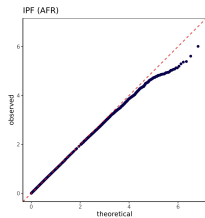


IPF (AMR)

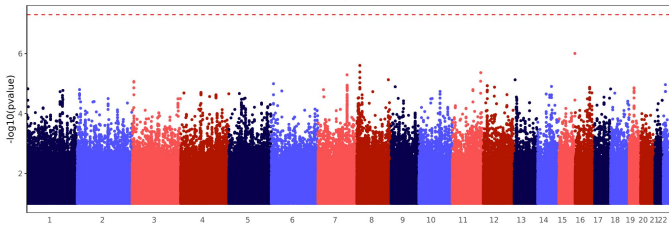


Supplementary Figure S5S: IPF, AFR

Cases vs. Controls: 76, 1150
 Number of SNPs: 6445498
 Number of significant SNPs (5e-8): 0
 Number of nominally significant SNPs (0.05): 306734
 Lambda GC: 0.96

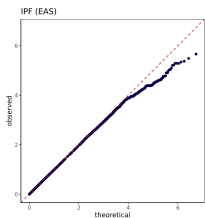


IPF (AFR)

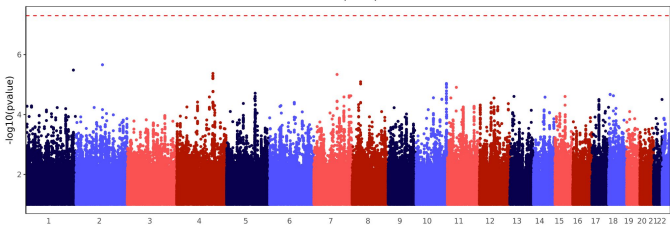


Supplementary Figure S5T: IPF, EAS

Cases vs. Controls: 89, 2211
 Number of SNPs: 5362117
 Number of significant SNPs (5e-8): 0
 Number of nominally significant SNPs (0.05): 253124
 Lambda GC: 0.97

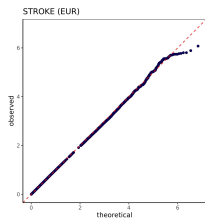


IPF (EAS)

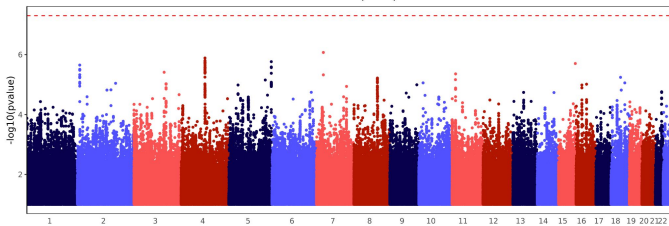


Supplementary Figure S5U: STROKE, EUR

Cases vs. Controls: 855, 15786
 Number of SNPs: 6821487
 Number of significant SNPs (5e-8): 0
 Number of nominally significant SNPs (0.05): 327493
 Lambda GC: 0.98

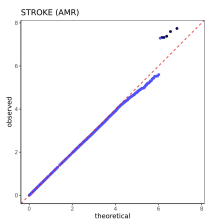


STROKE (EUR)

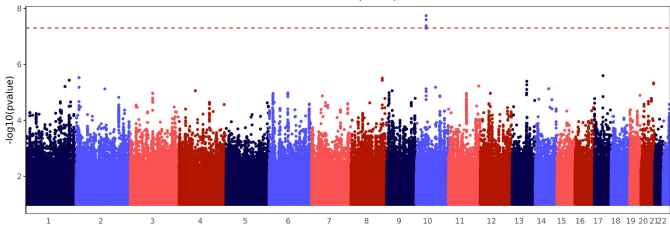


Supplementary Figure S5V: STROKE, AMR

Cases vs. Controls: 248, 4127
 Number of SNPs: 6989264
 Number of significant SNPs (5e-8): 5
 Number of nominally significant SNPs (0.05): 327754
 Lambda GC: 0.96

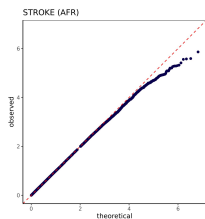


STROKE (AMR)

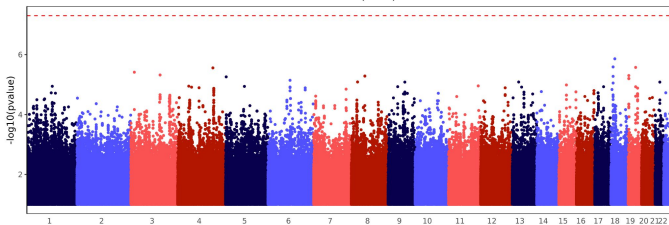


Supplementary Figure S5W: STROKE, AFR

Cases vs. Controls: 100, 1126
 Number of SNPs: 6515249
 Number of significant SNPs (5e-8): 0
 Number of nominally significant SNPs (0.05): 314659
 Lambda GC: 0.98

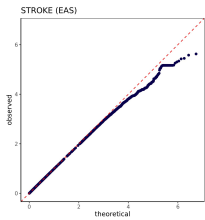


STROKE (AFR)

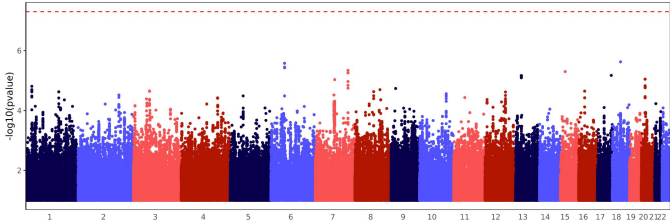


Supplementary Figure S5X: STROKE, EAS

Cases vs. Controls: 105, 2195
 Number of SNPs: 5312992
 Number of significant SNPs (5e-8): 0
 Number of nominally significant SNPs (0.05): 250657
 Lambda GC: 0.98

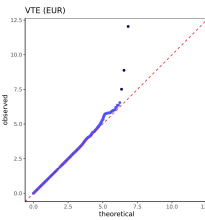


STROKE (EAS)

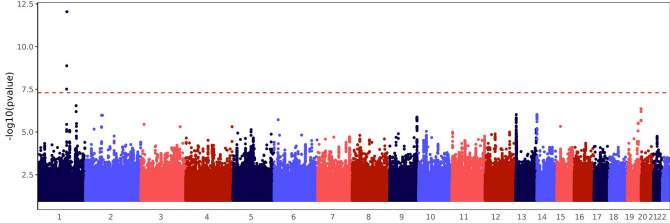


Supplementary Figure S5Y: VTE, EUR

Cases vs. Controls: 1503, 15138
 Number of SNPs: 6838442
 Number of significant SNPs (5e-8): 3
 Number of nominally significant SNPs (0.05): 327404
 Lambda GC: 0.98

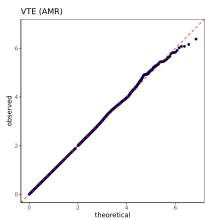


VTE (EUR)

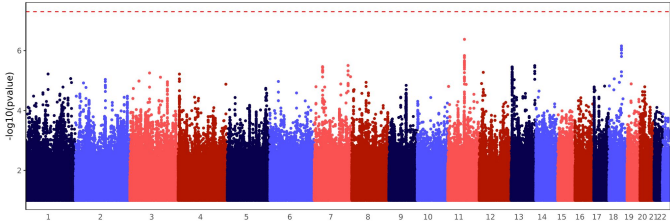


Supplementary Figure S5Z: VTE, AMR

Cases vs. Controls: 543, 3832
 Number of SNPs: 7032980
 Number of significant SNPs (5e-8): 0
 Number of nominally significant SNPs (0.05): 338233
 Lambda GC: 0.97

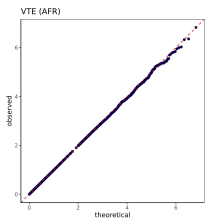


VTE (AMR)

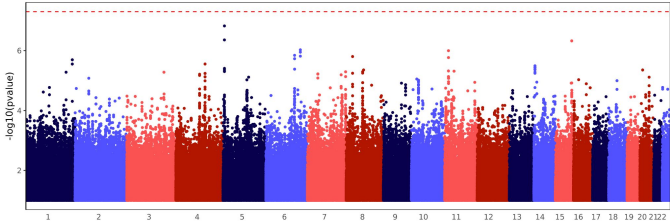


Supplementary Figure S5AA: VTE, AFR

Cases vs. Controls: 195, 1031
 Number of SNPs: 6534467
 Number of significant SNPs (5e-8): 0
 Number of nominally significant SNPs (0.05): 311423
 Lambda GC: 0.96

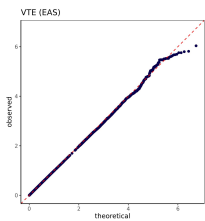


VTE (AFR)



Supplementary Figure S5AB: VTE, EAS

Cases vs. Controls: 132, 2168
 Number of SNPs: 5373808
 Number of significant SNPs (5e-8): 0
 Number of nominally significant SNPs (0.05): 251594
 Lambda GC: 0.97



VTE (EAS)

