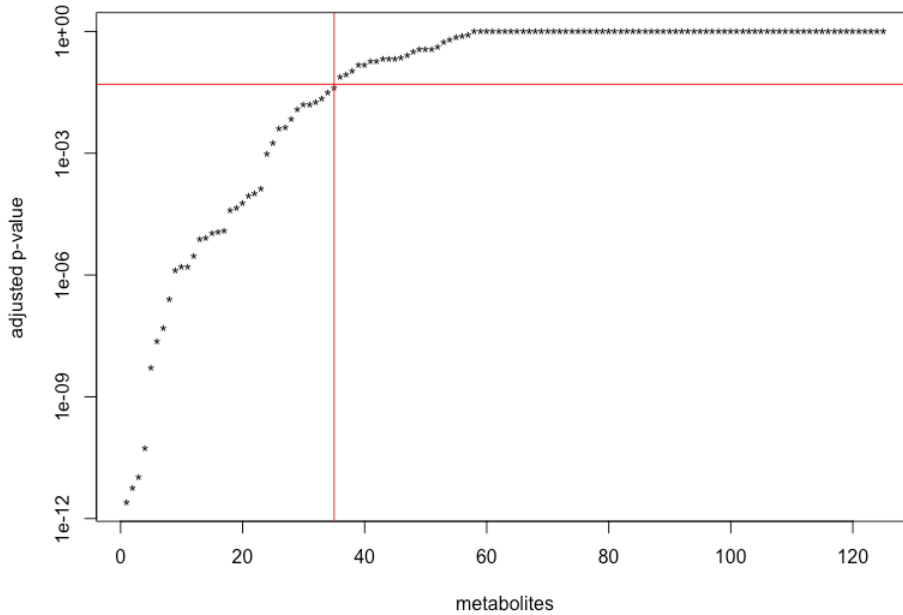


Supplementary Figure 1 – Time effects across first three days of hospitalization

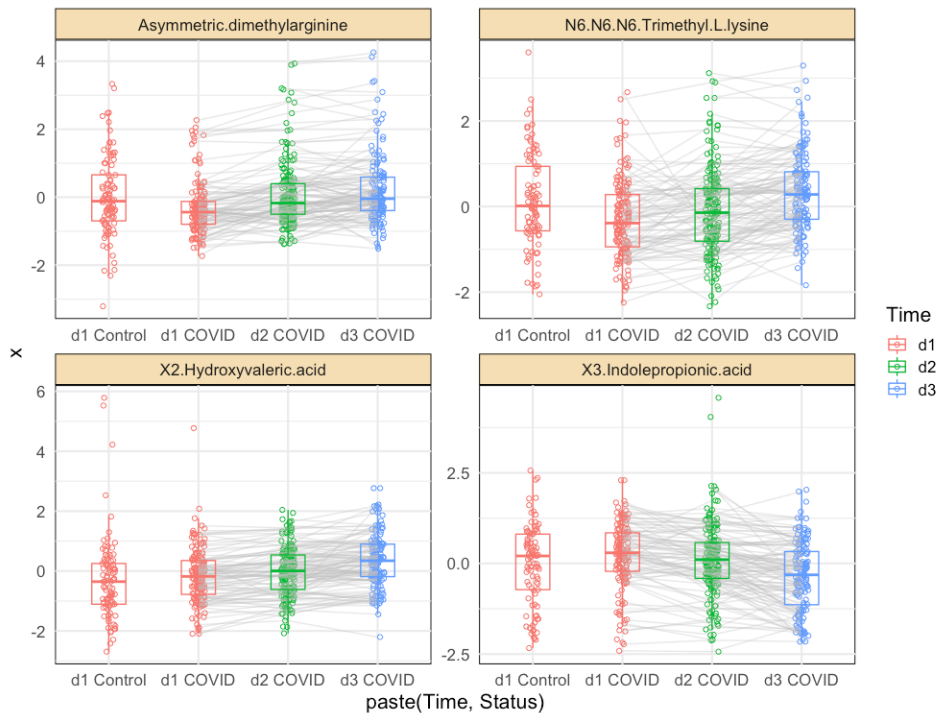
For each metabolite and transcript, the same linear mixed effect model as for the COVID-19. vs normal analysis was computed: $x \sim \text{Time} + \text{Status} + (1 | \text{Patient_ID})$. In this case we evaluated the significance the “Time” term to evaluate the effects of the day of sample taking.

Metabolomics

A total of 35 out of 125 metabolites showed a significant time effect.

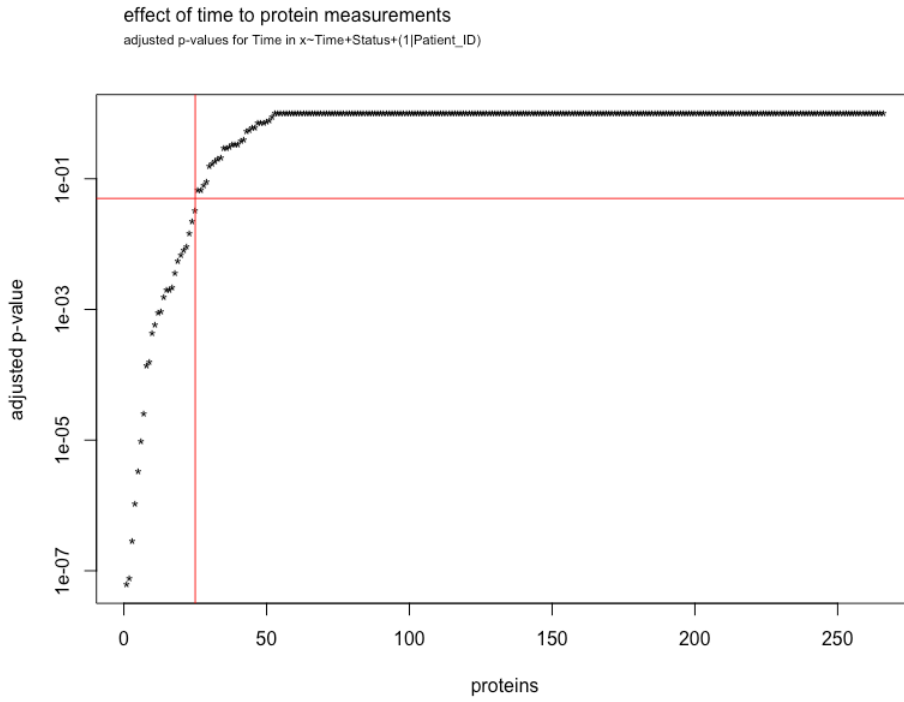


Examples, top 4 associations



Proteomics

A total of 25 out of 266 proteins showed a significant time effect.



Examples, top 4 associations

