

1 **Elevated brain-derived cell-free DNA among patients with**  
2 **first psychotic episode - a proof-of-concept study**

3  
4 Asael Lubotzky<sup>1, 2,\*</sup>, Ilana pelov<sup>3,\*</sup>, Ronen Teplitz<sup>3</sup>, Daniel Neiman<sup>1</sup>, Adama Smadja<sup>3</sup>, Hai  
5 Zemmour<sup>1</sup>, Sheina Piyanzin<sup>1</sup>, Bracha-Lea Ochana<sup>1</sup>, Kirsty L. Spalding<sup>4</sup>, Benjamin Glaser<sup>5</sup>, Ruth  
6 Shemer<sup>1,†</sup>, Yuval Dor<sup>1,†</sup>, Yoav Kohn<sup>3,6,†</sup>

7 <sup>1</sup>Department of Developmental Biology and Cancer Research, Institute for Medical Research  
8 Israel-Canada, the Hebrew University-Hadassah Medical School, Jerusalem, Israel

9 <sup>2</sup>Neuropediatric Unit, Shaare Zedek Medical Center, Jerusalem, Israel

10 <sup>3</sup>Jerusalem Mental Health Center, Eitanim Psychiatric Hospital, Jerusalem, Israel.

11 <sup>4</sup>Karolinska Institute, Department of Cell and Molecular Biology Stockholm, Stockholm,  
12 Sweden.

13 <sup>5</sup>Department of Endocrinology and Metabolism Service, Hadassah Medical Organization and  
14 Faculty of Medicine, Hebrew University of Jerusalem, Israel.

15 <sup>6</sup>Hebrew University-Hadassah School of Medicine, Jerusalem, Israel.

16 \*These authors contributed equally to this work

17 †Co-senior authors.

18

19 Address correspondence to:

20 Ruth Shemer or Yuval Dor, Department of Developmental Biology and Cancer Research, The  
21 Hebrew University-Hadassah Medical School, Ein Kerem Campus, Jerusalem 91120, Israel.  
22 Phone: 972.2.6757181; Email: shemer.ru@mail.huji.ac.il (RS). Phone: 972.2.6757181; Email:  
23 yuvald@ekmd.huji.ac.il (YD). Or to: Yoav Kohn, Jerusalem Mental Health Center, Eitanim  
24 Psychiatric Hospital, Jerusalem, Israel. Phone: 972.2.6551303; Email: yoavk@ekmd.huji.ac.il

25

26 Short/running title: Brain cell-free DNA in acute psychosis

27 Six keywords: Psychosis, cfDNA, DNA methylation, Liquid biopsy, Epigenetics, Biomarker.

28

29 **Abstract**

30

31 **Background:** Schizophrenia is a common, severe and debilitating psychiatric disorder. Despite  
32 extensive research there is as yet no biological marker that can aid in its diagnosis and course  
33 prediction. This precludes early detection and intervention. Imaging studies suggest brain  
34 volume loss around the onset and over the first few years of schizophrenia, and apoptosis has  
35 been proposed as the underlying mechanism. Cell free DNA fragments (cfDNA) are released  
36 into the bloodstream following cell death. Tissue-specific methylation patterns allow the  
37 identification of the tissue origins of cfDNA.

38 **Methods:** We developed a cocktail of brain specific DNA methylation markers, and used it to  
39 assess the presence of brain-derived cfDNA in the plasma of patients with a first psychotic  
40 episode.

41 **Results:** We detected significantly elevated neuron- ( $p=0.0013$ ), astrocyte- ( $p=0.0016$ ),  
42 oligodendrocyte- ( $p=0.0129$ ) and whole brain-derived ( $p=0.0012$ ) cfDNA in the plasma of  
43 patients during their first psychotic episode ( $n=29$ ), compared with healthy controls ( $n=31$ ).  
44 Increased cfDNA levels were not correlated with psychotropic medications use. Area Under the  
45 Curve (AUC) was 0.77, with 65% sensitivity at 90% specificity in patients with a psychotic  
46 episode.

47 **Conclusions:** Potential interpretations of these findings include increased brain cell death,  
48 disruption of the blood brain barrier or a defect in clearance of material from dying brain cells.  
49 Brain-specific cfDNA methylation markers can potentially assist early detection and monitoring  
50 of schizophrenia and thus allow early intervention and adequate therapy.

## 51 **Introduction**

### 52 **Early diagnosis in schizophrenia**

53 Schizophrenia is a complex and chronic psychiatric disorder affecting around 1% of the global  
54 population. It is associated with increased disability, mortality and high private and social  
55 economic burden<sup>1-3</sup>.

56 Psychosis is the first presentation of schizophrenia that usually leads to the diagnosis. Although  
57 psychosis typically onsets during adolescence and young adulthood, there is accumulating data  
58 that demonstrates underlying biological changes, beginning years prior to the psychotic  
59 symptoms<sup>4,5</sup>. Thus, identifying biomarkers that will allow early diagnosis and therapeutic  
60 interventions is of the highest importance.

61 The etiology of schizophrenia is multifactorial, with a complex interaction of polygenic risk and  
62 environmental factors<sup>3,6</sup>. Although over 100 genetic variants were identified contributing to the  
63 risk of schizophrenia, their broad distribution in the general population precludes clinical use<sup>7</sup>.

64 Other potential biomarkers were studied including neurotransmitters and their metabolites<sup>8</sup>,  
65 associated endophenotypes such as smooth pursuit eye movement (SPEM)<sup>9</sup> and sensory gating  
66 defects (P150)<sup>10</sup>. Results of those studies are somewhat inconsistent and are not specific enough  
67 to allow their use as a diagnostic tool. Brain imaging has demonstrated notable structural  
68 changes mostly in late and more chronic stages of the disease, too late for useful intervention<sup>11</sup>.

### 69 **Cell free DNA as a biomarker for diseases**

70 Circulating cell-free DNA (cfDNA) in the blood plasma was first discovered by Mandel and  
71 Metais in 1948<sup>12</sup>. Over the years it was established that these typically ~150 bp fragments of  
72 double-stranded DNA are released into the blood stream during the process of cell death<sup>13</sup>.

73 cfDNA molecules are rapidly cleared from the circulation with a half-life of ~15 minutes, thus  
74 reflecting events taking place at the time of blood draw<sup>14,15</sup>. Although the mechanism underlying  
75 the release and rapid clearance of the cfDNA is still unclear, many researchers have been trying  
76 to develop methods that will enable the use of these short fragments for the diagnosis and follow-  
77 up of various medical conditions. For example, cfDNA-based methods of prenatal diagnosis  
78 have been developed<sup>16,17</sup>, and ongoing work is advancing approaches for cancer liquid biopsy<sup>18-</sup>  
79 <sup>20</sup> and for detection of rejection in organ transplant recipients<sup>15,21,22</sup>.

80 The possibility of using cfDNA as a biomarker in the medical conditions detailed so far is based  
81 on the fundamental genetic difference between the DNA of a host and that of a tumor, fetus or  
82 the graft<sup>21,23-26</sup>. In comparison it is more complicated to assess changes in the levels of cfDNA in  
83 plasma of healthy individuals or individuals without mutated DNA in their blood. It is known  
84 that plasma levels of cfDNA vary over time depending on age, increased physical activity, and  
85 the existence of various medical conditions such as infectious diseases<sup>15</sup>. Therefore, it has not  
86 been possible to use the amount of cfDNA in the blood as a marker for a specific pathology.  
87 Moreover, although the cfDNA that circulates in the blood originates from different tissues, it  
88 has the same genome and therefore cannot be associated with a specific source tissue using DNA  
89 sequencing<sup>23,27,28</sup>.

90 We and others have recently described an approach to identify the tissue origins of cfDNA,  
91 based on tissue-specific methylation patterns. Such cell-type specific markers allow the inference  
92 of cell death in multiple settings, for example cardiomyocyte cell death following myocardial  
93 infarction or hepatocyte death in patients with liver metastasis<sup>21,23-26</sup>.

## 94 **Brain cell death in psychosis and schizophrenia**

95 Neuro-anatomical changes are known in schizophrenia. Numerous longitudinal and cross-  
96 sectional imaging studies recruited individuals at high and ultra-high risk for developing a  
97 psychotic illness and demonstrated dynamic brain changes emerging around onset and over the  
98 years of schizophrenia. The studies generally demonstrate gray matter reduction in the frontal  
99 and temporo-limbic regions<sup>29-31</sup>. Structural brain abnormalities in psychosis occur prior to full  
100 blown symptoms and progressively worsen as psychosis develops. Although the underlying  
101 causes and the exact timing of the morphologic changes in the brain remain obscure, apoptosis  
102 has been proposed as a potential mechanism that could contribute to this progressive pathology.  
103 This idea is also supported by post-mortem evidence of regional reduction of neuronal and glia  
104 density. Apoptosis in the CNS occurs rapidly, and apoptotic cells are typically cleared within 24  
105 hours. The process occurs without inflammation and does not involve gliosis<sup>32,33</sup>. Ershove et. al  
106 demonstrated dysregulation of apoptosis in schizophrenia through considerably increased  
107 oxidated levels of cfDNA<sup>34</sup>. Thus, we hypothesized that brain-derived cfDNA levels increase in  
108 patients with acute psychosis and schizophrenia, reflecting ongoing cell death, especially in early  
109 and active phases of diseases. We further hypothesized that brain cfDNA levels would be  
110 increased in patients, unrelated to treatment with antipsychotic medications.

111 In this proof-of-concept study we examined plasma samples from patients with a first psychotic  
112 episode, in order to assess the potential use of brain cfDNA as a method for early detection and  
113 diagnosis of schizophrenia in general and acute psychosis events.

## 114 **Methods**

### 115 **Clinical samples**

116 We recruited men and women over 18 years of age, who have developed psychotic symptoms for  
117 the first time in their life within the last year and were admitted to the acute psychiatric units of  
118 the Jerusalem Mental Health Center in Israel. Diagnosis of a psychotic disorder was given by  
119 treating psychiatrists and verified by a senior psychiatrist from the research team (I.P.). Blood  
120 samples were obtained after the initial stabilization and partial remission of the psychotic  
121 symptoms which enabled the patients to give written informed consent for participation in the  
122 study. The patients were asked to complete a short questionnaire regarding demographic details,  
123 current physical condition, the onset of present symptoms and drug use. The recruitment was  
124 done following the approval of the study's protocol by the Jerusalem Mental Health Center  
125 Institutional Review Board. Patients with acute medical conditions in the week prior to the blood  
126 sampling were excluded from the study.

127 A total of 31 patients were recruited between the years 2017 and 2019. DNA extraction from two  
128 samples has failed, and the remaining 29 samples were analyzed. The study included 55%  
129 females (n=16) and 45% males (n=13), with an age distribution of 18-48 years (average 24).  
130 72.5% of the patients (n=21) were hospitalized with a first psychotic event in their life, and  
131 27.5% of the patients (n=8) had a second or third psychotic event, up to a year after the  
132 beginning of the first one. 44.8% of the patients (n=13) did not have any background of drug  
133 abuse, 31% (n=9) indicated the use of marijuana in the weeks preceding the onset of the first  
134 psychotic episode. 24.2% patients (n=7) described using several different types of drugs  
135 (hallucinogens, MDMA, cocaine, etc.) in the past. Clinical data, including medications used,  
136 were obtained from medical records.

137 31 adult volunteers participated in the study as unpaid healthy controls. The samples were  
138 compared to age and sex matched healthy control subjects.

139 Patient demographics, clinical data and cfDNA data are detailed in **Supplementary Table S1**.

#### 140 **cfDNA analysis**

141 Blood samples were collected in cell-free DNA BCT® (Streck) tubes and centrifuged at 1500g  
142 for 10 min at 25 °C within 1 week of collection. Plasma was removed and re-centrifuged at  
143 3000g for 10 min at 25 °C to remove any remaining cells. Plasma was then stored at –80 °C until  
144 assay. Cell-free DNA was extracted using the QIAasymphony SP instrument and its dedicated  
145 QIAasymphony Circulating DNA Kit (Qiagen) according to manufacturer’s instructions. DNA  
146 concentration was measured using the Qubit® dsDNA HS Assay Kit (Thermo Fisher Scientific).  
147 cfDNA was treated with bisulfite using EZ DNA Methylation-Gold™ (Zymo Research), and  
148 PCR amplified with primers specific for bisulfite-treated DNA but independent of methylation  
149 status at the monitored CpG sites, as described<sup>35</sup>. Treatment with bisulfite led to degradation of  
150 60–90% of the DNA (average, 75% degradation), consistent with previous reports<sup>36</sup>. Note that  
151 while DNA degradation does reduce assay sensitivity (since fewer DNA molecules are available  
152 for PCR amplification), it does not significantly harm assay specificity since methylated and  
153 unmethylated molecules are equally affected. Primers were bar-coded using TruSeq Index  
154 Adapters (Illumina), allowing the mixing of samples from different individuals when sequencing  
155 PCR products using NextSeq sequencers (Illumina). Sequenced reads were separated by barcode,  
156 aligned to the target sequence, and analyzed using custom scripts written and implemented in R.  
157 Reads were quality filtered based on Illumina quality scores, and identified by having at least  
158 80% similarity to target sequences and containing all the expected CpGs in the sequence. CpGs  
159 were considered methylated if CG was read and were considered unmethylated if TG was read.



160 The fraction of unmethylated molecules in a sample was multiplied by the total concentration of  
161 cfDNA in the sample, to assess the number of brain genome equivalents per ml of plasma. The  
162 concentration of cfDNA was measured prior to bisulfite conversion, rendering the assay robust to  
163 potential inter-sample fluctuations in the extent of bisulfite-induced DNA degradation.

164

## 165 **Results**

### 166 **Identification of brain methylation markers**

167 Tissue-specific methylation markers were selected after a comparison of extensive genome-wide  
168 DNA methylation datasets generated using Illumina Infinium HumanMethylation450k BeadChip  
169 array. Datasets used included publicly available methylation profiles from The Cancer Genome  
170 Atlas and Gene Expression Omnibus repositories, along with data that we generated locally.  
171 Using this comparative analysis we selected 13 genomic loci, which are unmethylated  
172 specifically in neurons (4 markers), oligodendrocytes (3 markers), or astrocytes (3 markers) and  
173 in all brain-derived cell types (3 markers), and methylated in all other examined cell types. Data  
174 describing the development and validation of these 10 cell-specific markers (neurons,  
175 oligodendrocytes and astrocytes) were published in a recent paper<sup>37</sup>. To test our *in silico*  
176 predictions regarding the 3 whole brain markers specificity, we applied bisulfite treatment,  
177 multiplex PCR and next-generation sequencing to determine the methylation status of each  
178 marker in a panel of DNA samples obtained from multiple human tissues, as previously  
179 described<sup>35</sup> (**Figure 1-figure supplement 1A**). To determine assay sensitivity, we serially  
180 diluted brain DNA into leukocyte DNA, and found that the brain markers allowed the detection  
181 of as little as 0.1% brain DNA in a mixture, or just one brain genome in a mixture of a thousand  
182 genomes (**Figure 1-figure supplement 1B**).

### 183 **Noninvasive detection of brain-derived cfDNA among patients with first psychotic episode**

184 We determined the plasma concentrations of brain-derived cfDNA (including methylation  
185 markers of neurons, astrocytes, and oligodendrocytes and whole brain) in 31 healthy controls,  
186 and 29 patients with first psychotic episode.

187 Total levels of cfDNA circulating in plasma were higher in patients with first psychotic episode  
188 compared with healthy controls (Mann–Whitney test for controls vs. patients, p-value =0.017,  
189 **Figure 1A**). cfDNA levels from all brain cell combined were higher in patients with first  
190 psychotic episode compared with healthy (**Figure 1B,C**). cfDNA levels from each brain cell type  
191 separately or from whole-brain markers were also significantly elevated in patients (Mann–  
192 Whitney test for patients vs controls, neurons p-value =0.0013, astrocytes p-value =0.0016,  
193 oligodendrocytes p-value =0.0129, whole brain markers p-value = 0.0012). Elevated brain-  
194 derived cfDNA was seen when measuring either its absolute concentration (**Figure 1D**), or its  
195 fraction (**Figure 1-figure supplement 2A-D**). This is consistent with elevated release of brain-  
196 derived cfDNA in patients with first psychotic episode, reflecting brain pathology, rather than a  
197 non-specific effect.

198 To determine how well brain-derived cfDNA markers can distinguish patients with first  
199 psychotic episode from healthy controls, we generated a receiver operating characteristic (ROC)  
200 curve for the combined signal from all brain cell types. The brain cfDNA score was able to  
201 identify the plasma of patients with a first psychotic episode with an area under the curve (AUC)  
202 of 0.77 (p value=0.0003). At 90% specificity, the sensitivity for identifying patients with first  
203 psychotic episode was 65% (**Figure 1E**). The markers of each brain cell type were able to  
204 identify the plasma of patients with first psychotic episode with an AUC of 0.65-0.73 (**Figure 1-**  
205 **figure supplement 2E-H**).

206 There was no significant correlation between brain markers and clinical parameters including the  
207 duration of the current episode, duration of hospitalization or the number of psychotic episodes  
208 (see **Data Table S1**).

## 209 **Relationship to psychiatric drugs**

210 Since previous studies found a correlation between the use of antipsychotic drugs and anatomic  
211 changes in the brain<sup>38</sup>, we examined whether the increase of brain-derived cfDNA levels in  
212 patients is related to their psychiatric drug intake. To this effect, we considered (1) the amount of  
213 antipsychotic drugs taken on the day of the patient's blood test for cfDNA, and (2) the total  
214 amount of antipsychotic drugs taken throughout the hospitalization until the blood test. These  
215 data were taken from medical records. In order to generate a single score for all patients,  
216 independently of the type of drugs they took, we converted the various antipsychotic medication  
217 dosages into an equivalent dosage of olanzapine, following the expert-consensus based method  
218 used in Gardner et. al (2010)<sup>39</sup>. We then ran various statistical tests (Pearson and Spearman  
219 correlation coefficients, and t-test and Mann-Whitney for categorical comparisons), to examine  
220 potential correlations with the total amount of cfDNA, and the level of cfDNA originating from  
221 astrocytes, neurons, oligodendrocytes, and from the whole brain. We considered 13 individual  
222 biomarkers for brain cell types, as well as their average for each cell type, for a total of 18  
223 variables.

224 After correcting for multiple testing, we did not find any statistically significant correlation  
225 between drug intake and cfDNA. Also, all statistical tests apart from 3 were non-significant on a  
226 nominal level ( $p > 0.05$ ). We found nominally statistically significant correlations between the  
227 levels of brain-derived cfDNA and drug intake for only one type of astrocyte marker (PRDM2)  
228 and one type of neuron marker (ITF) (Spearman correlation coefficient for astrocyte marker  
229 PRDM2:  $p\text{-value}=0.024/\text{drugs on blood test day}$ , and  $p\text{-value}=0.025/\text{overall amount drugs}$ ; for  
230 neuron ITF:  $p\text{-value}=0.016/\text{overall amount of drugs}$ ).

231

## 232 **Discussion**

233 We have demonstrated increased levels of brain-derived cfDNA in adult patients with a first  
234 psychotic episode. This is a proof-of-concept study, demonstrating the feasibility of using  
235 cfDNA as a biomarker in psychiatric patients, and the results call for replication in a larger  
236 number of well characterized patient samples, requiring better control for diagnosis and drug  
237 treatment. Further research is needed to examine the association of increased brain cfDNA levels  
238 with specific diagnoses, mainly schizophrenia, and with other factors such as genetic  
239 predisposition and course of disease.

240 We note that our study detected elevated brain cfDNA but did not reveal the cause of release of  
241 these molecules to circulation. We hypothesize that our findings reflect brain cell apoptosis,  
242 which is consistent with the literature indicating brain damage in such patients. However  
243 elevated brain cfDNA could also result from a disruption of the blood-brain barrier, from a  
244 defect in the local removal of debris from dying brain cells, or a combination of these biological  
245 phenomena. Regardless, elevated brain cfDNA provides an intriguing, measurable link between  
246 a physical process in the brain and a psychotic episode. Another alternative driver of cfDNA,  
247 which we could not robustly rule out, was psychiatric drug treatment or illicit drug abuse both of  
248 which could theoretically induce brain cell death, although we partially controlled for that.  
249 Future exploration should aim at distinguishing between these possibilities. We also note that  
250 samples were obtained after the initial stabilization and partial remission of the psychotic  
251 symptoms, suggesting the possibility that a more dramatic elevation of brain cfDNA takes place  
252 during the acute phase of the psychotic episode. Finally, we observed an elevation in the total  
253 concentration of cfDNA among psychotic patients. Since brain cfDNA comprises a small  
254 fraction of cfDNA even among patients (<1% of total cfDNA), this elevation must originate in

255 other tissues, likely immune or inflammatory cells, perhaps related to the proposed link between  
256 schizophrenia and the immune system<sup>40,41</sup> .

257 The development and validation of brain-specific cfDNA methylation markers can shed light on  
258 the biology of schizophrenia and other brain diseases, and potentially assist early detection and  
259 monitoring of treatment response.

260

261 **Competing interests**

262 DN, HZ, BG, RS, and YD filed a patent (year 2019, application number 62/828,587) on cell-free  
263 DNA analysis technology. The remaining authors declare no competing interests.

264

265 **Funding**

266 Supported by a Joint Award of the National Institute of Psychobiology in Israel (NIPI) and the  
267 Israeli Society of Biological Psychiatry (to IP and AL). Supported by grants from Grail, The  
268 Ernest and Bonnie Beutler Research Program of Excellence in Genomic Medicine, The Israel  
269 Science Foundation, the Waldholtz/Pakula family, the Robert M. and Marilyn Sternberg Family  
270 Charitable Foundation (to YD). YD holds the Walter and Greta Stiel Chair and Research grant in  
271 Heart studies.

272

273 **Acknowledgements**

274 The authors thank all patients and controls for their participation in the study.

275

276 **Code availability**

277 Custom script for sequence analysis is available from the authors upon reasonable request.

278

279 **Data availability**

280 All relevant data including information on the markers used (coordinates and primer sequences),  
281 detailed information on donors and the raw data on values of each methylation marker in each

282 sample is provided within the supplementary information. Detailed PCR conditions and  
283 additional protocols are available from the authors upon reasonable request.



## 284 **References**

- 285 1. Laursen, T. M., Nordentoft, M. & Mortensen, P. B. Excess early mortality in  
286 schizophrenia. *Annual Review of Clinical Psychology* vol. 10 425–448 (2014).
- 287 2. Chong, H. Y. *et al.* Global economic burden of schizophrenia: A systematic review.  
288 *Neuropsychiatric Disease and Treatment* vol. 12 357–373 (2016).
- 289 3. Insel, T. R. Rethinking schizophrenia. *Nature* vol. 468 187–193 (2010).
- 290 4. Kahn, R. S. & Sommer, I. E. The neurobiology and treatment of first-episode  
291 schizophrenia. *Molecular Psychiatry* vol. 20 84–97 (2015).
- 292 5. Lewandowski, K. E., Cohen, B. M. & Öngur, D. Evolution of neuropsychological  
293 dysfunction during the course of schizophrenia and bipolar disorder. *Psychol. Med.* **41**,  
294 225–241 (2011).
- 295 6. Owen, M. J., Sawa, A. & Mortensen, P. B. Schizophrenia. *Lancet* **388**, 86–97 (2016).
- 296 7. Stefansson, H. *et al.* Common variants conferring risk of schizophrenia. *Nature* **460**, 744–  
297 747 (2009).
- 298 8. Davison, J., O’Gorman, A., Brennan, L. & Cotter, D. R. A systematic review of  
299 metabolite biomarkers of schizophrenia. *Schizophrenia Research* vol. 195 32–50 (2018).
- 300 9. Morita, K. *et al.* Eye movement as a biomarker of schizophrenia: Using an integrated eye  
301 movement score. *Psychiatry Clin. Neurosci.* **71**, 104–114 (2017).
- 302 10. Suh, B. K. *et al.* Schizophrenia-associated dysbindin modulates axonal mitochondrial  
303 movement in cooperation with p150glued. *Mol. Brain* **14**, (2021).

- 304 11. McCutcheon, R. A., Reis Marques, T. & Howes, O. D. Schizophrenia - An Overview.  
305 *JAMA Psychiatry* vol. 77 201–210 (2020).
- 306 12. Liu, Y. In Search of Darwin’s Imaginary Gemmules. *Adv. Genet.* **101**, 87–114 (2018).
- 307 13. Lo, Y. M. D., Han, D. S. C., Jiang, P. & Chiu, R. W. K. Epigenetics, fragmentomics, and  
308 topology of cell-free DNA in liquid biopsies. *Science* **372**, (2021).
- 309 14. Lo, Y. M. D. *et al.* Rapid Clearance of Fetal DNA from Maternal Plasma. *Am. J. Hum.*  
310 *Genet.* (1999) doi:10.1086/302205.
- 311 15. Sherwood, K. & Weimer, E. T. Characteristics, properties, and potential applications of  
312 circulating cell-free dna in clinical diagnostics: a focus on transplantation. *Journal of*  
313 *Immunological Methods* vol. 463 27–38 (2018).
- 314 16. Wainscoat, J. S. *et al.* Presence of fetal DNA in maternal plasma and serum. *Lancet* **350**,  
315 485–487 (2002).
- 316 17. Wong, B. C. K. & Lo, Y. M. D. Cell-free DNA and RNA in plasma as new tools for  
317 molecular diagnostics. *Expert Review of Molecular Diagnostics* vol. 3 785–797 (2003).
- 318 18. Volckmar, A. L. *et al.* A field guide for cancer diagnostics using cell-free DNA: From  
319 principles to practice and clinical applications. *Genes Chromosomes and Cancer* vol. 57  
320 123–139 (2018).
- 321 19. Schwarzenbach, H., Hoon, D. S. B. & Pantel, K. Cell-free nucleic acids as biomarkers in  
322 cancer patients. *Nature Reviews Cancer* (2011) doi:10.1038/nrc3066.
- 323 20. Corcoran, R. B. & Chabner, B. A. Application of Cell-free DNA Analysis to Cancer

- 324 Treatment. *N. Engl. J. Med.* **379**, 1754–1765 (2018).
- 325 21. Lehmann-Werman, R. *et al.* Monitoring liver damage using hepatocyte-specific  
326 methylation markers in cell-free circulating DNA. *JCI Insight* (2018)  
327 doi:10.1172/jci.insight.120687.
- 328 22. Gala-Lopez, B. L. *et al.* Beta Cell Death by Cell-free DNA and Outcome After Clinical  
329 Islet Transplantation. *Transplantation* **102**, 978–985 (2018).
- 330 23. Lehmann-Werman, R. *et al.* Identification of tissue-specific cell death using methylation  
331 patterns of circulating DNA. *Proc. Natl. Acad. Sci.* (2016) doi:10.1073/pnas.1519286113.
- 332 24. Zemmour, H. *et al.* Non-invasive detection of human cardiomyocyte death using  
333 methylation patterns of circulating DNA. *Nat. Commun.* (2018) doi:10.1038/s41467-018-  
334 03961-y.
- 335 25. Sun, K. *et al.* Plasma DNA tissue mapping by genome-wide methylation sequencing for  
336 noninvasive prenatal, cancer, and transplantation assessments. *Proc. Natl. Acad. Sci.*  
337 (2015) doi:10.1073/pnas.1508736112.
- 338 26. Gai, W. *et al.* Liver- and Colon-Specific DNA Methylation Markers in Plasma for  
339 Investigation of Colorectal Cancers with or without Liver Metastases. *Clin. Chem.* **64**,  
340 1239–1249 (2018).
- 341 27. Moss, J. *et al.* Comprehensive human cell-type methylation atlas reveals origins of  
342 circulating cell-free DNA in health and disease. *Nat. Commun.* **9**, (2018).
- 343 28. Dor, Y. & Cedar, H. Principles of DNA methylation and their implications for biology and  
344 medicine. *The Lancet* (2018) doi:10.1016/S0140-6736(18)31268-6.

- 345 29. Takahashi, T. & Suzuki, M. Brain morphologic changes in early stages of psychosis:  
346 Implications for clinical application and early intervention. *Psychiatry Clin. Neurosci.* **72**,  
347 556–571 (2018).
- 348 30. Dietsche, B., Kircher, T. & Falkenberg, I. Structural brain changes in schizophrenia at  
349 different stages of the illness: A selective review of longitudinal magnetic resonance  
350 imaging studies. *Australian and New Zealand Journal of Psychiatry* vol. 51 500–508  
351 (2017).
- 352 31. Pantelis, C. *et al.* Neuroimaging and emerging psychotic disorders: The Melbourne ultra-  
353 high risk studies. *International Review of Psychiatry* vol. 19 371–379 (2007).
- 354 32. Jarskog, L. F., Glantz, L. A., Gilmore, J. H. & Lieberman, J. A. Apoptotic mechanisms in  
355 the pathophysiology of schizophrenia. *Progress in Neuro-Psychopharmacology and*  
356 *Biological Psychiatry* vol. 29 846–858 (2005).
- 357 33. Jarskog, L. F. Apoptosis in schizophrenia: Pathophysiologic and therapeutic  
358 considerations. *Current Opinion in Psychiatry* vol. 19 307–312 (2006).
- 359 34. Ershova, E. S. *et al.* Quantification of cell-free DNA in blood plasma and DNA damage  
360 degree in lymphocytes to evaluate dysregulation of apoptosis in schizophrenia patients. *J.*  
361 *Psychiatr. Res.* **87**, 15–22 (2017).
- 362 35. Neiman, D. *et al.* Multiplexing DNA methylation markers to detect circulating cell-free  
363 DNA derived from human pancreatic beta-cells. *JCI Insight* (2020)  
364 doi:10.1172/jci.insight.136579.
- 365 36. Grunau, C., Clark, S. J. & Rosenthal, A. Bisulfite genomic sequencing: systematic

- 366 investigation of critical experimental parameters. *Nucleic Acids Res.* **29**, 65–65 (2001).
- 367 37. Lubotzky, A. *et al.* Liquid biopsy reveals collateral tissue damage in cancer. *JCI insight* **7**,  
368 (2022).
- 369 38. Huhtaniska, S. *et al.* Long-term antipsychotic use and brain changes in schizophrenia – a  
370 systematic review and meta-analysis. *Human Psychopharmacology* vol. 32 (2017).
- 371 39. Gardner, D. M., Murphy, A. L., O'Donnell, H., Centorrino, F. & Baldessarini, R. J.  
372 International consensus study of antipsychotic dosing. *Am. J. Psychiatry* **167**, 686–693  
373 (2010).
- 374 40. KE, Z. & JR, L. Innate immunity at the crossroads of healthy brain maturation and  
375 neurodevelopmental disorders. *Nat. Rev. Immunol.* **21**, (2021).
- 376 41. GM, K. *et al.* Inflammation and immunity in schizophrenia: implications for  
377 pathophysiology and treatment. *The lancet. Psychiatry* **2**, 258–270 (2015).

378

379 **Legend to Figure**

380

381 **Figure 1: Brain-derived cfDNA in patients with a first psychotic episode.**

382 **A. Plasma concentrations of total cfDNA.** Total levels of cfDNA in healthy controls and  
383 patients with first psychotic episode. Mann–Whitney test for controls vs. patients, p-value  
384 =0.017.

385 **B-C. Plasma concentrations of brain-derived cfDNA.** Brain cfDNA levels in healthy controls  
386 (n=31) and patients with first psychotic episode (n=29), represented as the cumulative sum of the  
387 average signals from neuron, oligodendrocyte and astrocyte markers. In panel B, graph retaining  
388 the value of each component; in panel C, graph combining all average signals to one value for  
389 statistical analysis.

390 **D. Signals from distinct brain cell types.** Mann–Whitney test for controls vs. patients, neurons  
391 p-value =0.0013, astrocytes p-value =0.0016, oligodendrocytes p-value =0.0129 and whole brain  
392 markers p-value =0.0012. Shown are the average levels in plasma of 4 neuronal markers, 3  
393 astrocyte markers, 3 oligodendrocyte markers, and 3 general brain markers. cfDNA was treated  
394 with bisulfite, PCR amplified and sequenced, and the molecules that are fully unmethylated were  
395 scored. The fraction of brain-specific molecules was multiplied by the total cfDNA  
396 concentration. Each dot represents one plasma sample.

397 **E. ROC curve for distinguishing patients with first psychotic episode from healthy controls.**

398 A combined score of all brain markers, area under the curve (AUC) 0.77; 95% CI =0.64-0.9; p-  
399 value = 0.0003.

400

401 **Legend to Supplementary Figures**

402

403 **Figure 1-figure supplement 1: specificity and sensitivity of brain methylation markers.**

404 **A.** Methylation status of 13 brain-derived markers in genomic DNA from multiple human  
405 tissues. Each color represents a different locus that is differentially hypomethylated in a specific  
406 brain cell type. Shown is the methylation score of multiple CpG sites in each block (i.e. the  
407 fraction of molecules that are fully unmethylated in a given sample).

408 **B.** Sensitivity of brain-derived methylation markers. Brain DNA was spiked into leukocyte DNA  
409 as indicated and the fraction of brain DNA was assessed using bisulfite conversion, multiplex  
410 PCR amplification of brain markers and sequencing. **Left.** 20 brain cell genome equivalents  
411 (GE) (120 pg brain DNA) were mixed with blood DNA (0 to 10 ng). **Right,** brain cell DNA (20  
412 to 0.2 GE) was diluted into 10ng of blood DNA.

413

414 **Figure 1-figure supplement 2: fractions and ROC curves for markers of individual brain**  
415 **cell types.**

416 **A-D: Percentage of brain-derived cfDNA.**

417 Brain cfDNA levels expressed as percentage of cfDNA derived from the indicated brain cell  
418 type. Mann–Whitney test for controls vs. patients, neurons p-value =0.0048, astrocytes p-value  
419 =0.0074, oligodendrocytes p-value =0.0186 and whole brain markers p-value =0.0018.

420 **E-H: ROC curves for distinguishing patients with first psychotic episode from healthy**  
421 **controls, using markers of individual brain cell types.**

422 **E.** Neuronal markers; area under the curve (AUC) 0.73, 95% CI = 0.6 to 0.86; p-value < 0.0024.

423 **F.** Astrocyte markers; AUC 0.73; 95% CI = 0.6 to 0.86; p-value < 0.0024.

424 **G.** Oligodendrocyte markers; AUC 0.65; 95% CI = 0.51 to 0.79; p-value < 0.045.

425 **H.** Whole brain markers; AUC 0.71; 95% CI = 0.58 to 0.84; p-value < 0.0036.

426

427

428

429



Figure 1

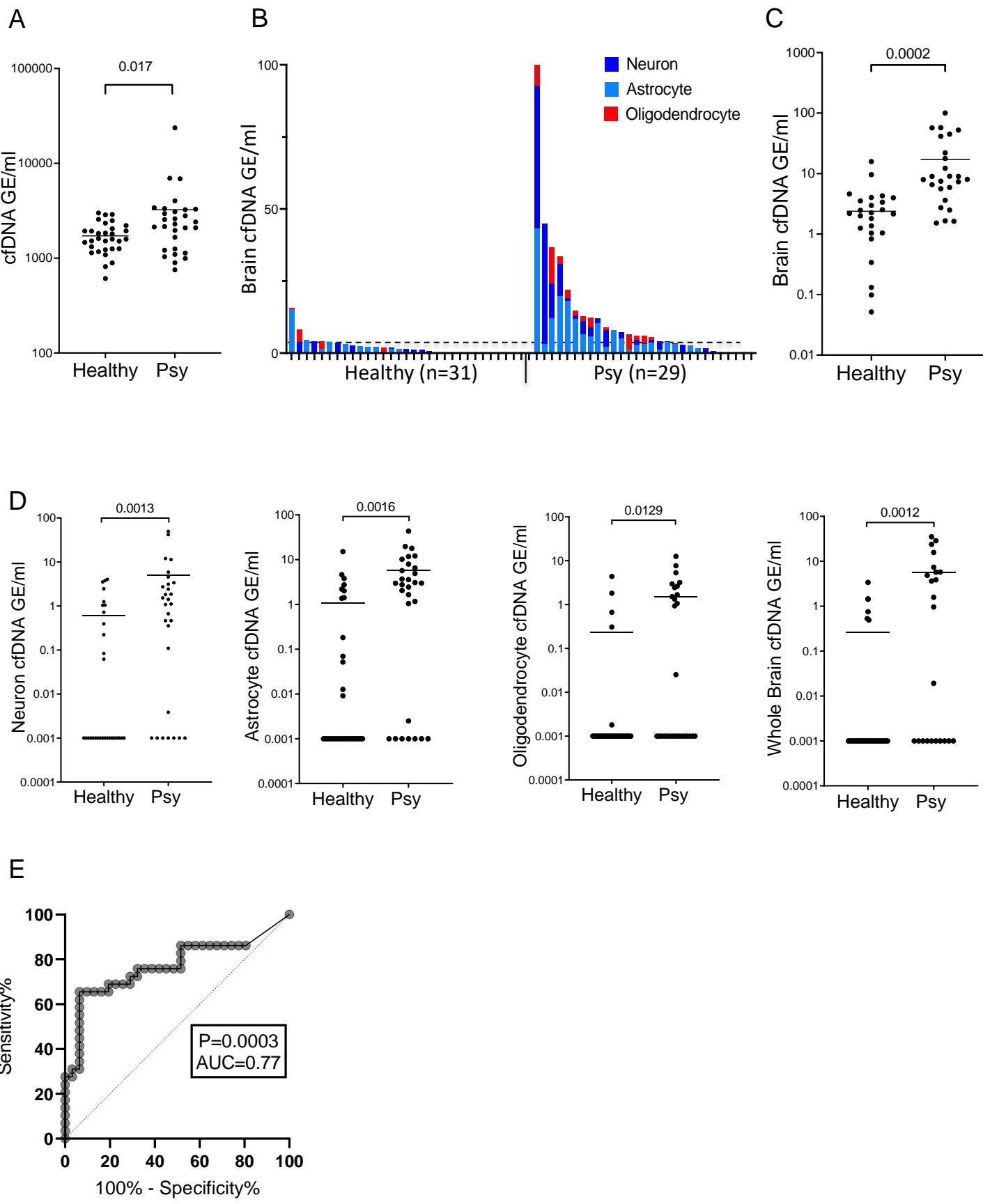
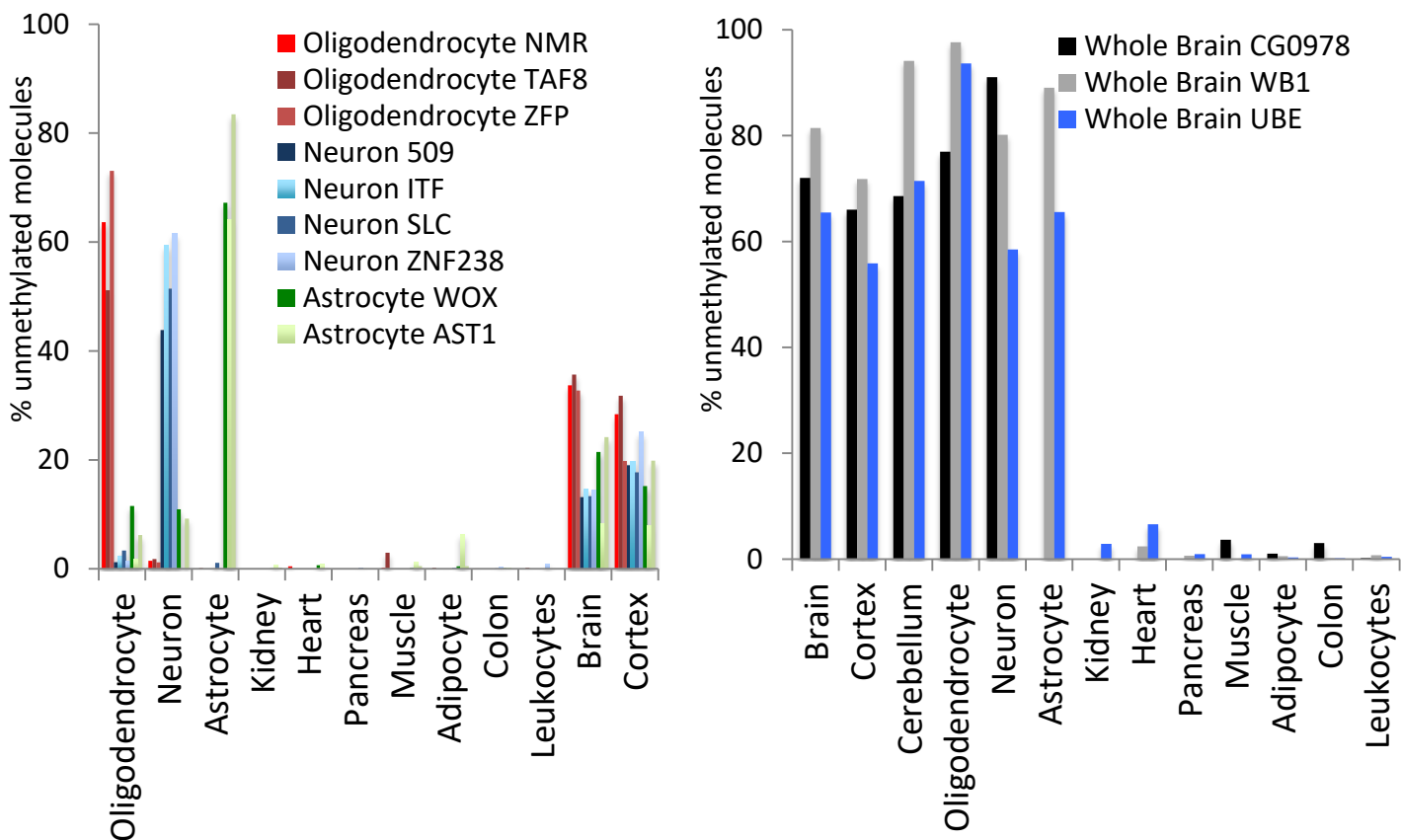


Figure 1-figure supplement 1

A



B

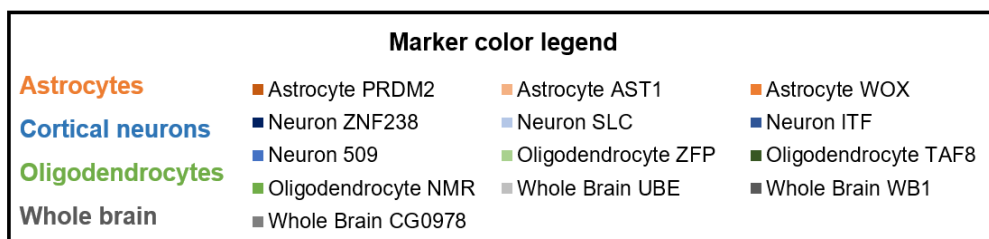
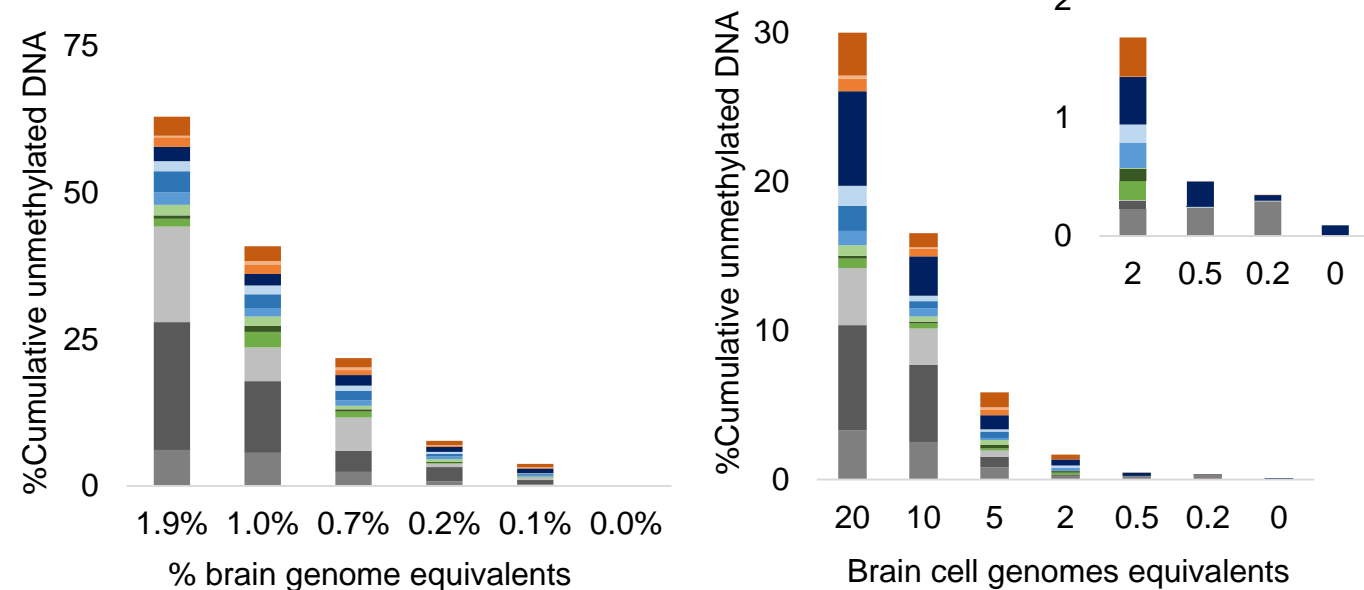


Figure 1-figure supplement 2

