

# Cov<sup>2</sup>MS: an automated matrix-independent assay for mass spectrometric detection and measurement of SARS-CoV-2 nucleocapsid protein in infectious patients

Bart Van Puyvelde <sup>1</sup>, Katleen Van Uytfanghe <sup>2</sup>, Laurence Van Oudenhove <sup>3</sup>, Ralf Gabriels <sup>4,5</sup>, Tessa Van Royen <sup>4,6</sup>, Arne Matthys<sup>4,6</sup>, Morteza Razavi <sup>7</sup>, Richard Yip <sup>7</sup>, Terry Pearson <sup>7</sup>, Marijn van Hulle <sup>3</sup>, Jan Claereboudt <sup>3</sup>, Kevin Wyndham <sup>8</sup>, Don Jones <sup>9,10</sup>, Xavier Saelens <sup>4,6</sup>, Geert A. Martens <sup>11</sup>, Christophe Stove <sup>2</sup>, Dieter Deforce <sup>1</sup>, Lennart Martens <sup>4,5</sup>, Johannes P.C. Vissers <sup>8</sup>, N. Leigh Anderson <sup>7</sup>, Maarten Dhaenens <sup>1\*</sup>

<sup>1</sup> ProGenTomics, Laboratory of Pharmaceutical Biotechnology, Ghent University, 9000 Ghent, Belgium

<sup>2</sup> Laboratory of Toxicology, Department of Bioanalysis, Faculty of Pharmaceutical Sciences, Ghent University, 9000 Ghent, Belgium

<sup>3</sup> Waters Corporation, 2600 Antwerp, Belgium

<sup>4</sup> VIB-UGent Center for Medical Biotechnology, VIB, 9000 Ghent, Belgium

<sup>5</sup> Department of Biomolecular Medicine, Ghent University, 9000 Ghent, Belgium

<sup>6</sup> Department of Biochemistry and Microbiology, Ghent University, 9000 Ghent, Belgium

<sup>7</sup> SISCAPA Assay Technologies, Inc., Box 53309, Washington, DC 20009, United States of America and Victoria, BC Canada

<sup>8</sup> Waters Corporation, Wilmslow SK9 4AX, United Kingdom and Milford, MA 01757, United States of America

<sup>9</sup> Leicester Cancer Research Centre, RKCSB, University of Leicester, UK and John and Lucille van Geest biomarker facility, Cardiovascular Research Centre, Glenfield Hospital, Leicester LE1 7RH, United Kingdom

<sup>10</sup> The Department of Chemical Pathology and Metabolic Diseases, Level 4, Sandringham Building, Leicester Royal Infirmary, Leicester LE1 7RH, United Kingdom

<sup>11</sup> AZ Delta Medical Laboratories, AZ Delta General Hospital, 8800 Roeselare, Belgium

**Keywords:** SARS-CoV-2, Covid-19, Mass Spectrometry, Proteomics, Viral proteins, Peptides, Diagnostics

\*Corresponding author: [maarten.dhaenens@ugent.be](mailto:maarten.dhaenens@ugent.be)

## Supplemental Figures

20210628\_SARS-CoV-2\_Aceton\_UTMBioer\_Saliva\_Monc V.1 Execute

1 2 3 4 5 6 7 8 9 10 11 12  
A  
B  
C  
D  
E  
F  
G  
H

Volume after first incubation

1 2 3 4 5 6 7 8 9 10 11 12  
A  
B  
C  
D  
E  
F  
G  
H

Waters 0.7 mL 96-round well collection p

1 2 3 4 5 6

Agilent 6 column reagent reservoir

1 2 3 4 5 6 7 8 9 10 11 12  
A  
B  
C  
D  
E  
F  
G  
H

Waters QuanRecovery™ 700 µl 96-well plate

STEPS LABWARE INFO

Reorder

20. Start shaking Waters 0.7 mL 96-round well collection p at 1400 rpm for 3 minutes

21. Stop shaking Waters 0.7 mL 96-round well collection p at 1400 rpm after 3 minutes

22. Start shaking Waters 0.7 mL 96-round well collection p at 1100 rpm for 1 hours

23. Stop shaking Waters 0.7 mL 96-round well collection p at 1100 rpm after 1 hours

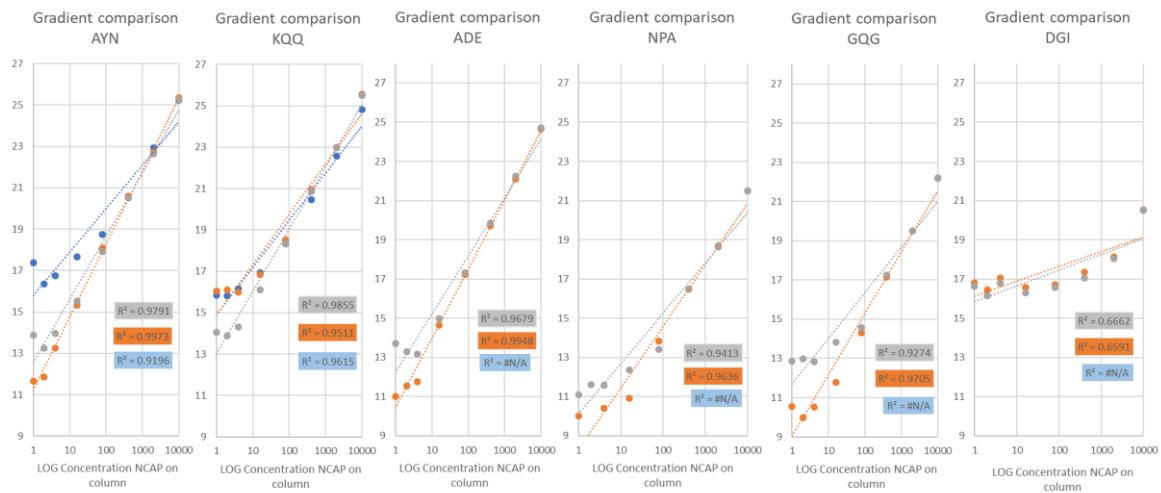
24. User action  
Remove Seal  
Expected time: 2 minutes

25. Apply magnetic field to Waters 0.7 mL 96-round well collection p and wait 1 minutes to capture magnetic beads

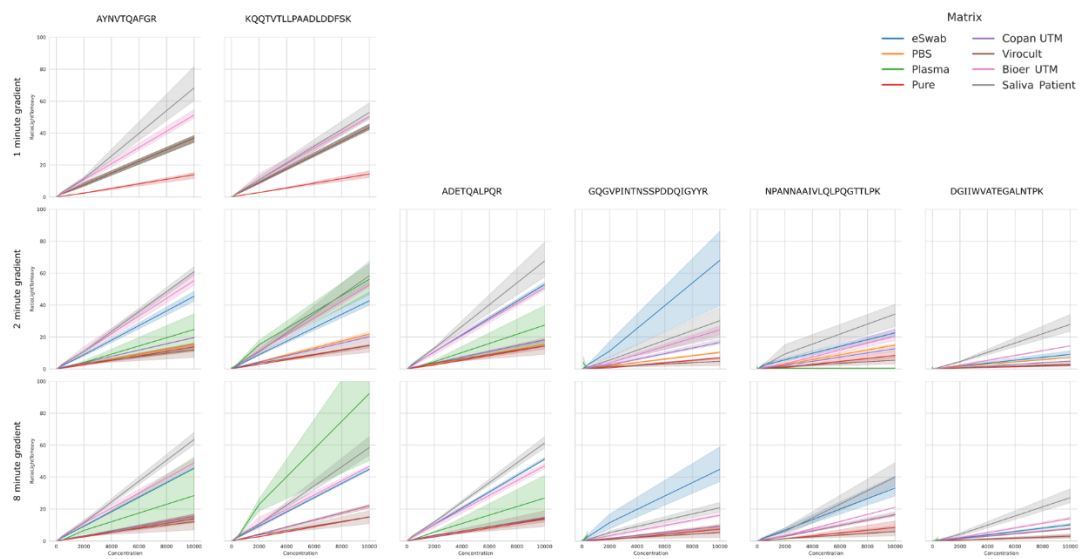
26. Dispense 280 µL from Waters 0.7 mL 96-round well collection p A1:A12, B1:B12

179%

**Supplemental Figure 1.** Screenshot of the protocol automation in the OneLab interface

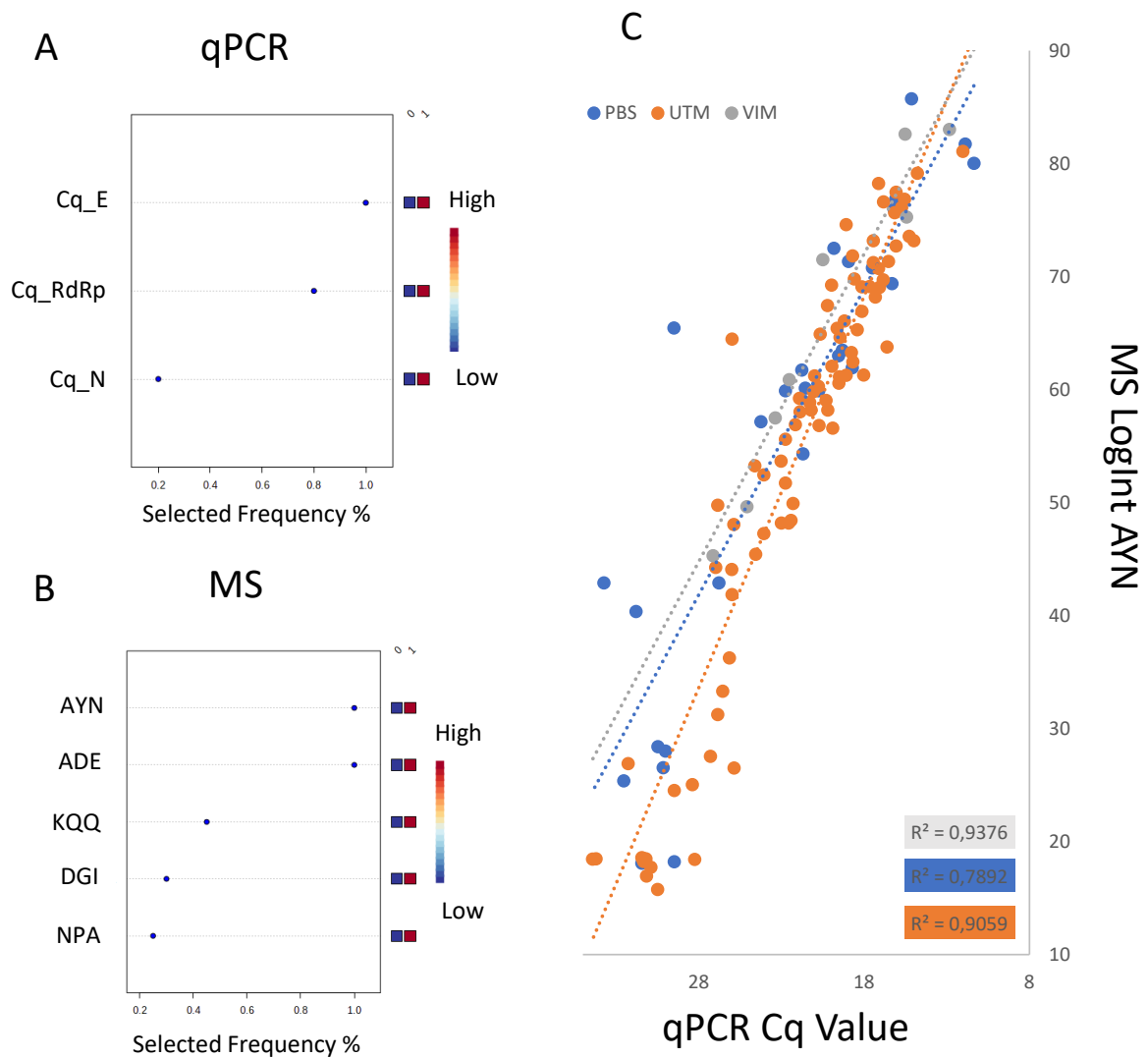


**Supplemental Figure 2.** Response of six SISCAPA peptide targets in a PBS dilution series measured using three different gradients (Blue: 1 min, Orange: 2 min and Grey: 8 min). Here, the x- and y-axis represent the LogConcentration of Nucleoprotein and the corresponding summed peptide LogInt of the MS signal, respectively.



**Supplemental Figure 3.** Light/heavy ratio of six SISCAPA peptides in eight different matrices (i.e. eSwab, PBS, Copan UTM, Virocult, Bioer UTM, Plasma, 100 mM (NH<sub>4</sub>)HCO<sub>3</sub> and Saliva Patient) using three different gradients.

## Supplementary Figure 4: Gene and peptide selection



**Supplemental Figure 4.** Contribution of the different **A**) genes (qPCR) and **B**) peptides (MS) to diagnosis as expressed in Selected Frequency % (SF%). **C**) Linear correlation between summed MRM LogInt AYN and Cq for the different media (PBS, UTM and VIM) in the sample batch separately.

Supplemental Table 1. MRM parameters for the six SISCAPA target peptides. Transitions highlighted in orange are used as stable isotope labelled standard.

Peptide	MRM	Cone Voltage (V)	Collision Energy (V)	Retention time (1min)	Retention time (2min)	Retention time (8min)	Scan window (1min)	Scan window (2min)	Scan window (8min)
ADETQALPQR	564.8 > 712.4 (y6)	35	24		0.48	1.13		0.1-0.7	0.5-1.6
	564.8 > 584.4 (y5)	35	20		0.48	1.13		0.1-0.7	0.5-1.6
	564.8 > 400.2 (y3)	35	17		0.48	1.13		0.1-0.7	0.5-1.6
	572.3 > 407.2 (y3)	35	17		0.48	1.13		0.1-0.7	0.5-1.6
AYNVTQAFGR	563.8 > 892.5 (y8)	35	17	0.4	0.72	2.43	0.15-0.8	0.5-0.9	1.9-2.9
	563.8 > 778.4 (y7)	35	17	0.4	0.72	2.43	0.15-0.8	0.5-0.9	1.9-2.9
	563.8 > 679.4 (y6)	35	20	0.4	0.72	2.43	0.15-0.8	0.5-0.9	1.9-2.9
	563.8 > 349.2 (b3)	35	17	0.4	0.72	2.43	0.15-0.8	0.5-0.9	1.9-2.9
	571.3 > 689.3 (y6)	35	20	0.4	0.72	2.43	0.15-0.8	0.5-0.9	1.9-2.9
GQGVPIINTSSPDDQIGYYR	727.7 > 1126.5 (y9)	35	23		0.81	2.62		0.6-1	2.1-3.1
	727.7 > 558.3 (y4)	35	23		0.81	2.62		0.6-1	2.1-3.1
	727.7 > 563.8 (y9++)	35	23		0.81	2.62		0.6-1	2.1-3.1
	727.7 > 342.2 (b4)	35	23		0.81	2.62		0.6-1	2.1-3.1
	736.7 > 570.2 (y9++)	35	23		0.81	2.62		0.6-1	2.1-3.1
KQQTVTLLPAADLDDFSK	664.0 > 1078.5 (y10)	35	18	0.44	1.18	3.8	0.15-0.8	1-1.4	3.3-4.3
	664.0 > 539.8 (y10++)	35	14	0.44	1.18	3.8	0.15-0.8	1-1.4	3.3-4.3
	664.0 > 799.5 (b7)	35	22	0.44	1.18	3.8	0.15-0.8	1-1.4	3.3-4.3
	671.3 > 545.2 (y10++)	35	14	0.44	1.18	3.8	0.15-0.8	1-1.4	3.3-4.3
NPANNAIIVLQLPQGTTLPK	687.4 > 841.5 (y8)	35	17		1.19	3.9		1-1.4	3.4-4.4
	687.4 > 766.4 (b8)	35	23		1.19	3.9		1-1.4	3.4-4.4
	687.4 > 433.2 (b9)	35	20		1.19	3.9		1-1.4	3.4-4.4
	696.0 > 851.4 (y8)	35	17		1.19	3.9		1-1.4	3.4-4.4
DGIWVATEGALNTPK	842.9 > 286.1 (b3)	35	30		1.24	4.15		1-1.7	3.7-5
	562.3 > 700.4 (y7)	35	10		1.24	4.15		1-1.7	3.7-5
	562.3 > 700.4 (y13++)	35	18		1.24	4.15		1-1.7	3.7-5
	852.4 > 289.1 (b3)	35	30		1.24	4.15		1-1.7	3.7-5