

# Visual Acuity alterations in heavily impaired Congenital Zika Syndrome (CZS) children.

Luiz C. P. Baran, MSc.<sup>1,2</sup>, Diego da S. Lima, MSc.<sup>1,2</sup>, Leonardo A. Silva, MSc.<sup>1,2</sup>, Heydi S. Tabares, MD.<sup>1,2</sup>, Sarah L. Dias, BSc.<sup>1</sup>, Andrea Araújo Zin, MD3, PhD.<sup>3</sup>, Maria Elisabeth Lopes Moreira, MD, PhD.<sup>3</sup>, Marcelo F. Costa, PhD.<sup>1,2</sup>, Dora F. Ventura, PhD.<sup>1,2</sup>

1 Department of Experimental Psychology, University of São Paulo, Institute of Psychology, São Paulo, SP, Brazil.

2 Nucleus of Neurosciences and Behavior, University of São Paulo, São Paulo, SP, Brazil.

3 Clinical Research Unit, National Institute of Women, Children and Teenagers Fernandes Figueira, Oswaldo Cruz Foundation, Rio de Janeiro, Brazil.

## \* Correspondence:

Corresponding Author

baranejbio@gmail.com

**Keywords: zika, ziky, virus, visual acuity, va.**

## Abstract

We aim to assess visual acuity (VA) in Congenital Zika Syndrome (CZS)-children to evaluate visual loss. To that end we evaluated 41 CZS- children, from Rio de Janeiro using Teller Acuity Cards. They had Zika virus-infection confirmed by reverse transcription–polymerase chain reaction (RT-PCR) or clinical evaluation. VA below normative values was present in 39/41 (95%). In 10 cases, VA was only marginally below normal; in the remaining 29 cases, VA was more than 0.15 logMAR below the lower limit. There was no relationship between VA and cognitive domain tasks, although there was a relationship between VA and motor domain tasks. Thirty-seven children performed at least one task in the cognitive set, 14 children did not perform any task in the motor set. Children with VA above the lower limit performed better in the cognitive and motor tasks. We concluded that ZIKV- infected children with CSZ were highly VA impaired which correlated with motor performance, but not with cognitive performance. Part of the children had VA within the normal limits and displayed better performance in the cognitive and motor set. Therefore, even if heavily impaired, most children had some degree of visual acuity and visual function and may benefit from visual rehabilitation.

## 31 **1 Introduction**

32 Gestational Zika virus (ZIKV) infection may lead to Congenital Zika Syndrome (CZS)<sup>1-4</sup>,  
33 with microcephaly as its most known manifestation. In Brazil, where the pandemic had a high  
34 impact, a great number of cases of microcephaly were reported in 2015-2016<sup>5</sup>. There was a clear  
35 asymmetry in regional occurrence of CZS, which was more frequent in the Northeast region of  
36 Brazil, and also in Rio de Janeiro and Cuiabá. A causal link between the ZIKV infection and the  
37 occurrence of microcephaly was inferred by temporal correlation and was later experimentally  
38 confirmed<sup>1,6,7</sup>. CZS, is not restricted to microcephaly and has a myriad of manifestations, due, chiefly  
39 to neurological impairment and massive intracranial volume loss<sup>1</sup>. Features of the CZS spectrum  
40 include partially collapsed cranium, neurological effects such as thin cerebral cortices, seizures,  
41 polymicrogyria and subcortical calcifications, increase in cerebral fluid spaces (ventriculomegaly),  
42 hypoplasia or loss of the corpus callosum, decreased myelination, cerebellar hypoplasia and  
43 brainstem and basal ganglia calcifications, along with somatic abnormalities such as hypertonia,  
44 limb contracture, arthrogryposis (joint stiffening), altered craniofacial proportions, spasms,  
45 irritability, problems in swallowing and hearing losses<sup>1,3,4</sup>.

46 CZS also affects the visual system. Clinical manifestations include chorioretinal atrophy,  
47 macular pigmentary mottling, vascular changes, retinal focal spots, optic nerve anomalies,  
48 microphthalmia, iris coloboma, cataracts and intraocular calcifications<sup>1,2,8-10</sup>. Infection of central  
49 nervous system might incur in eye motility issues such as strabismus, nystagmus and  
50 accommodative capacity impairment as well<sup>11</sup>.

51 Even though some studies focusing on visual and ocular alterations due to ZIKV-infection  
52 have examined the impact of these vision threatening events since the beginning of the recent ZIKV  
53 epidemics<sup>2,8,10,12-18</sup>, the full scope of CZS effects on the visual system is not completely characterized  
54 yet. In a cohort in the Northeast of Brazil, where the highest rate of children born with CZS during  
55 the 2015-2016 ZIKV epidemic was seen. Ventura and collaborators<sup>2</sup> reported visual acuity losses in

56 76% of children with CZS (n=25; all with microcephaly); failure in the detection of a low-contrast  
57 pattern in 65% (n=31) and failure to achieve at least one visual development milestone in 97%  
58 (N=31) of tested children, apart from eye movement conditions. The authors found VA losses in all  
59 11 tested children, with acuity values ranging from 0.5-5 octaves below lower limits. Ventura et al.<sup>12</sup>,  
60 found VA deficits in approximately 85% of a larger sample (N=119). Those studies were carried out  
61 with populations from North-Eastern Brazil.

62 The impact of CZS on VA was also assessed, by our team, in a cohort from South-Eastern  
63 Brazil (Jundiaí, São Paulo), a region that presented a different epidemiological profile: although  
64 ZIKV infection rates in the general population were high, the incidence of CZS was relatively low<sup>19</sup>.  
65 Baran et. al<sup>17</sup> found that babies exposed to maternal ZIKV infection during pregnancy that had not  
66 become infected had VA within normal limits. Conversely, in the group of babies that acquired  
67 infection during gestation, 5/24 children (21%) had VA impairment, 2 of which with microcephaly.  
68 Moreover, examined as group, the infected children showed a slower VA development rate compared  
69 with the control and exposed groups<sup>17,18</sup>.

70 Visual deficits were also observed in a sample from the state of Rio de Janeiro<sup>10,14,15</sup>, the  
71 region with the highest incidence of CZS outside North-Eastern Brazil<sup>19</sup>. In this sample, 30% of the  
72 patients (N=173) did not meet the requirements of a visual screening test that assessed the child's  
73 capacity to fixate a single monochromatic pattern and follow it with the gaze (The Fix-and-Follow  
74 test). This exam, while useful for identifying children with severe VA deficits, does not yield a  
75 threshold estimate, required for a direct comparison with previous studies. Moreover, since the  
76 pattern used in the test has low spatial frequency, mild VA losses might go undetected.

77 In the present study, we measured VA in infants and children who had been exposed to ZIKV  
78 during gestation and developed CZS. Our aim was to better characterize the incidence and magnitude  
79 of vision loss in CZS patients by assessing VA - a quantitative and universally measured indicator of  
80 visual function. VA was assessed behaviorally using a clinical version of Teller Acuity Card

81 (TAC)<sup>20–25</sup>. The TAC procedure is well-established as an efficient and reliable instrument to measure  
82 VA in young children in a clinical setting<sup>21–24</sup>.

83 Here we add to our previous works<sup>17,18</sup> and to the literature of the area by evaluating patients  
84 that were at an older age (previous studies had patients ranging from 4-13 months of age<sup>2,11,12</sup>, while  
85 patients in the present study had a median age of 24 months); more severely affected by CZS; by  
86 characterizing VA function in affected children from a different geographic region not covered by  
87 previous work, with different epidemiological profile and enrolled in a cohort which followed a  
88 different study design.

89 By examining a population from another region, selected with a different selection criteria, in  
90 a cohort of older, more impaired children, we further characterize the spread of the virus in Brazil,  
91 continuing to help document the diversity of the ZIKV's impact in different regions of the country.  
92 These differences may be due to a variety of factors, such as strain differences, host susceptibility<sup>26</sup>,  
93 water contamination<sup>27</sup>, or malnutrition<sup>28</sup>. Additionally, it is critical to document and characterize the  
94 visual function alterations in CZS children with and without microcephaly.

95

## 96 **2 Materials and Methods**

97 This research is in line with the tenets of the Declaration of Helsinki<sup>29</sup> and was approved by  
98 the Ethics Committee for Human Research of the University of São Paulo's Institute of Psychology  
99 (number 67031216.0.0000.5561) and by the Ethics Committee for Human Research of the Institute  
100 Fernandes Figueira (IFF) – Fiocruz (number 526756616000005269). An informed consent was  
101 signed by the parent or accompanying adult of the child after being given an explanation on the  
102 nature and purpose of the study.

103 Children examined were part of the Vertical Exposure to Zika Virus and Its Consequences for Child  
104 Neurodevelopment cohort, registered under NCT03255369 at the NIH Clinical Trials Database<sup>14,15,30</sup>.

105 Methodological details about the enrollment criteria for patients can be found at the Clinical Trials  
106 page for the cohort (<https://clinicaltrials.gov/ct2/show/NCT03255369>).

107 The cohort was assembled and followed clinically in the Institute Fernandes Figueira (IFF)  
108 Fiocruz, by the Institute's research team under the guidance of coauthor AZ. For the present study we  
109 recruited children born from mothers with suspected ZIKV-infection during pregnancy (such as rash,  
110 arthralgia, myalgia and fever) and who filled one or more of the following criteria: (a) Positive RT-  
111 PCR sample for ZIKV, from either pregnant mother or from the child within 10 days after birth; (b)  
112 Presence of structural congenital alterations detected via ultrasound; (c) Clinical manifestations  
113 typical of CZS (such as microcephaly and eye alterations) detected via clinical examination after  
114 birth. The RT-qPCR, serologic test and clinical examination (including fundoscopic evaluation) for  
115 ZIKV infection was performed by IFF Fiocruz research team<sup>14,15,30</sup>.

116 The TAC test consists of 15 gray 25.5 x 55.5 cm cards (35% reflectance). Each card has a  
117 small peephole (4 mm in diameter) in the center to allow the experimenter to observe the child's  
118 looking behavior. Each TAC card contains a 12 x 12 cm square-wave grating (black and white  
119 stripes, at approximately 95% contrast) on one side of the central peephole. Gratings range from 0.32  
120 cycles/cm to 38.0 cycles/cm in approximately half-octave steps. The space-averaged luminance of  
121 each grating is equal to the card's gray background.

122 Patients sat in an adult's lap facing an Observer holding the card. The cards were presented by  
123 the Observer to the child from a distance of 38 cm. All children were examined at the distance of the  
124 38 cm, despite their age because of the attentional, neurological and eye motility issues (such as  
125 nystagmus) of the children evaluated in this study. At the start of each acuity measurement, the  
126 Observer was always blind to the left-right location of the grating on the card. The Observer attracted  
127 the child's attention to the card and watched the direction of her gaze through the peephole. The  
128 Observer's task on each trial was to make a forced-choice guess about the location of the grating

129 based on the child's behavior (primarily the direction of gaze). An Assistant, behind the child, who  
130 could see the grating's location, recorded the Observer's guess on each trial and gave him feedback.

131 A 1-Down, 1-Up staircase procedure was used during testing. First the card with the 0.23  
132 cy/cm spatial frequency stimulus (first card in the set) was presented to account for the possibility  
133 that children with very low acuity could be in the sample. A card with half-octave higher spatial  
134 frequency was selected every time the Observer made a correct guess about the grating position, and  
135 a card with a half-octave lower spatial frequency every time the Observer made an incorrect guess.  
136 The staircase was completed after a minimum of three reversals depending on the experimenter's  
137 confidence about his judgment of the children's responses. VA threshold was calculated as the  
138 geometric mean of the spatial frequencies of the gratings in the final 3 reversals.

139 VA thresholds were converted to logMAR based on the distance of 38 cm common across all  
140 participants. If participants had a prescription for refractive correction, and used well adapted  
141 spectacles, they performed the test wearing them. Children born prematurely had their age corrected  
142 (from post-natal to post-term), and their VA was compared to post-term age norms assuming that no  
143 differences in VA between terms and preterm<sup>31-35</sup>.

144 Children were subjected to two sets of brief tasks of functional vision assessment, fifteen  
145 items related to the visual function of the Bayley Scales of Infant and Toddler Development, Third  
146 Edition (Bayley-III, 2006) were selected, nine in the cognitive set and six in the motor set, in the  
147 same occasion as their VA was being tested, with the aim of examining if there was any relationship  
148 with the measured VA. A complete application of the developmental outcomes for the patients in the  
149 cohort (at a younger age) has been published previously<sup>36</sup>.

150 VA values were compared with normative values established by Salomão & Ventura<sup>22</sup>, using  
151 the same tolerance intervals. The patients were categorized accordingly to their visual acuity falling  
152 above, marginally below and below normative values. Effects of both the patient's age and the  
153 presence of any kind of retinal damage in VA was investigated by estimating the coefficients of a

154 linear regression model. Confidence intervals for the coefficients and the Likelihood Ratio (LR)  
155 Statistic<sup>37</sup> were calculated. The relationship between acuity and functional visual outcomes was  
156 evaluated via a logistic regression statistical model. We established the criteria of having successfully  
157 completed at least 2/3 of the investigated visual acuity tasks as the binary outcome for the model  
158 which was related to the VA value (in logMAR) as the independent variable. Any associations were  
159 considered significant if the calculated LR statistic value was above the 0.05 significance level. The  
160 statistical routines from the statsmodels library<sup>38</sup> were used for all statistical procedures.

161

### 162 **3 Results**

163 We evaluated 45 children, from which 41 met our inclusion criteria (20 boys). The age range  
164 was 21-34 months. Diagnostic of CZS based on a positive RT-PCR test result from either the mother  
165 and/or the child was available in 18 cases. For the remaining 23 cases, diagnosis was based on the  
166 pregnant mother having ZIKV symptoms and the child presenting CZS outcomes, such as  
167 microcephaly. Within the group of children clinically diagnosed with ZIKV-infection but without  
168 positive laboratory confirmation, either the child or the mother had negative results in 14 cases at the  
169 time of testing (which does not rule out viremia at an earlier stage relative to the testing occasion),  
170 while 9 cases were untested. There were 26 co-occurrences of microcephaly and retinal damage, and  
171 a single case of ZIKV-infected child with eye retinal damage in the absence of microcephaly. In all  
172 cases included based on clinical criteria, the mothers tested negative for the exposure to TORCH  
173 agents.

174 The patients in the sample had a mean visual acuity of 1.0 logMAR (SD = 0.3 logMAR;  
175 Range = 1.73 to 0.5 logMAR). Most children (39/41–95%) had VA below normative values for their  
176 age. In 10 cases, VA was only marginally below normative values (visual acuity within 0.15  
177 logMAR from the lower normative limit, equivalent to a single spatial frequency step in the card set);

178 for the remaining 29 cases, visual acuity was more than 0.15 logMAR below the lower limit (Figure  
179 1).

180 VA measurements within 0.15 logMAR of the lower normative limits require repeated testing  
181 and/or additional clinical information collected via other techniques before diagnosing VA deficits  
182 (Stereo-Optical Co., 2005). Among the ten children with VA only marginally below normative  
183 values, seven (70%) presented retinal damage. In the group of children with VA more than 0.15  
184 logMAR below inferior limits, 21 (72%) presented retinal damage. The mean and range of VA  
185 values, and their relation to retinal damage, using this classification is summarized at Table 1.

186 Table 1 – Visual acuity (VA) by classification.

187

<b>Classification</b>	<b>N</b>	<b>Minimum Acuity (logMAR)*</b>	<b>Maximum Acuity (logMAR)*</b>	<b>Eye damage (N)</b>
Above inferior limit	2	0.6006	0.5527	1
Marginally below inferior limit (< 0.15 logMAR)	10	0.9574	0.5048	7
Below inferior limit (> 0.15 logMAR)	29	1.7316	0.7010	23

188

189 A multiple linear regression model that included age (in months) and presence of any retinal  
190 damage as independent variables to predict VA (in logMAR) showed no significant effect for either  
191 variable (Age = -0.0278 to 0.0237 logMAR/month; Retinal Damage = -0.0564 to 0.03424 logMAR  
192 change; LR = 2.08; p = 0.354). In the age range tested (21-34 months) only a very modest increase in



193 visual acuity is expected (0.2 logMAR in the average of the normative values), consequently, it is not  
194 possible to evaluate the problems in VA development in this sample. Since all children were tested  
195 binocularly, the absence of a relationship between eye damage and acuity could be due to  
196 compensation by an unaffected eye.

197 Functional vision examination results are summarized in Table 2. Overall, most patients were  
198 able to complete simpler tasks (pay attention to object and react to the examiner's face occlusion) but  
199 only a few completed more complex tasks (persistent reaching, preference for novel object).

200 Table 2 - Functional vision evaluation.

201

<b>Task Domain</b>	<b>Task</b>	<b>N patients</b>	<b>Proportion</b>
Cognitive domain	Item 3 – Pays attention to object (3s)	32	78.04%
	Item 8 – Pays attention to object (5s)	32	78.04%
	Item 9 – Reacts to face occlusion	35	85.36%
	Item 11 – Shows visual preference	28	68.29%
	Item 12 – Habituates to object	18	43.90%
	Item 13 – Prefers new object	9	21.95%

	Item 15 – Prefers new object figure	6	14.63%
	Item 17 – Takes object to mouth	23	56.09%
	Item 21 – Persistent reaching	6	14.63%
Motor domain	Item 2 – Eyes follow moving person	31	75.60%
	Item 3 – Eyes follow plastic ring (horizontal)	22	53.65%
	Item 4 – Eyes follow plastic ring (vertical)	23	56.09%
	Item 7 – Eyes follow plastic ring (circular)	18	43.90%
	Item 8 - Head follows plastic ring	19	46.34%
	Item 9 – Eyes follow moving ball	14	34.14%

202

203

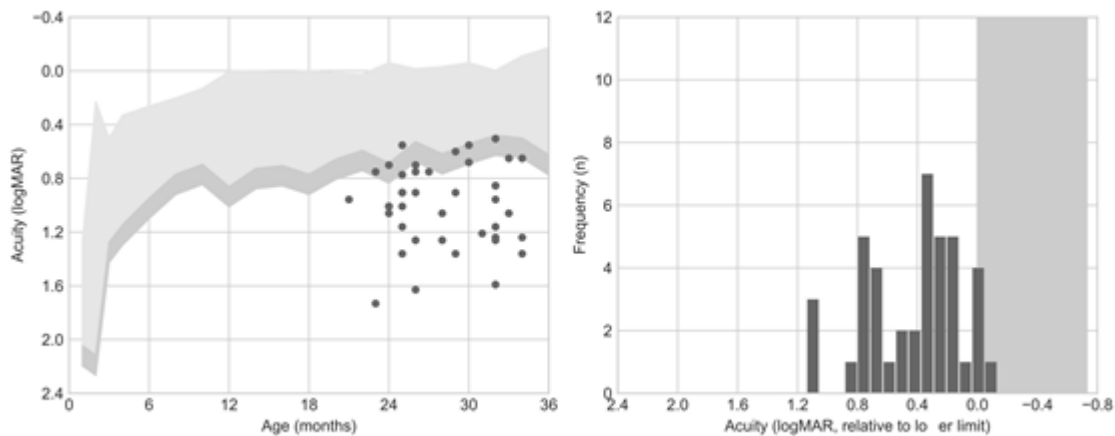
204

205

206

To relate functional vision evaluation to acuity, we identified which patients performed at least 2/3 of the tasks successfully. No relationship could be established between VA and the cognitive domain tasks (Acuity Regression Coefficient = -0.87 to 0.43 Log-Odds change; LR = 0.475; p = 0.4905), but there was a statistically significant relationship between VA and the motor

207 domain tasks (Acuity Regression Coefficient = -1.00 to -0.02 Log-Odds change; LR = 4.109; p =  
208 0.0426). Moreover, it is interesting to notice that only four children did not complete at least one task  
209 in both sets of tasks (cognitive or motor), all of them part of the most damaged group (below  
210 normative values). Most children (37) performed at least one task in the cognitive set, but 14 children  
211 did not perform even one task in the motor set. These results may imply that visual deficits in these  
212 children are impairing their motor skills even when their cognitive skills somewhat preserved.  
213 Furthermore, the children above the lower VA limit per age had a better mean performance in the  
214 cognitive (67%) and motor (66%) set than children whose VA fell below lower normative limits.  
215 Those that were marginally below the VA lower limit had showed 49% and 38% mean performance  
216 in the cognitive and motor set, respectively, while those with VA below the lower limit had 48% and  
217 44% mean performance in the cognitive and motor set, respectively.



218

219

#### 220 4 Discussion

221 The present study furthers our research team's efforts to characterize the VA and VA  
222 development losses in children exposed to ZIKV infection during pregnancy as we did in previous  
223 studies<sup>17,18</sup>, examining a cohort from Jundiaí, São Paulo, Brazil's Southeast. In this work, we  
224 evaluated a distinct population in Brazil's Southeast, in the city of Rio de Janeiro, Rio de Janeiro.

225 Compared to the Jundiaí cohort, in which only few cases of microcephaly were documented,  
226 the Rio de Janeiro Cohort tells a very different story, presenting a much larger number of children  
227 with CZS in which fundoscopic alterations, VA losses and microcephaly are likely more intertwined  
228 than in the Jundiaí Cohort. At the Rio de Janeiro Cohort, only one patient did not have microcephaly  
229 (but had fundoscopic damage). 8/41 children with microcephaly did not have ophthalmologic  
230 anomalies and 7/41 children showed VA within or marginally below normative values. In other  
231 words, in this cohort, all children with VA loss also had microcephaly and/or ophthalmological  
232 damage, which makes harder to know if the VA losses in these children are due to neurologic  
233 alterations, retinal damage or both.

234 The children sampled for the Rio de Janeiro cohort came from a larger study, showing that  
235 beyond the fundoscopic alterations (mainly damages in the retina and optic nerve)<sup>14</sup>, these children  
236 also had ocular motility damage<sup>30</sup>, which is in agreement with the high degree of VA loss we found  
237 in this sample.

238 The children samples evaluated in the Rio de Janeiro Cohort and Jundiaí Cohort were close in  
239 size, with respectively 40 and 23 children in each one, but their profiles are significantly different.  
240 All subjects in Rio de Janeiro Cohort had microcephaly and/or ophthalmologic impairment against  
241 only 16 % (4/24) children with microcephaly in the Jundiaí Cohort. Most children (84%) in the Rio  
242 de Janeiro cohort had VA below or marginally below normal against 21% of children with subnormal  
243 VA in the Jundiaí Cohort. The results in our samples seem to be representative of the cohorts as a  
244 whole, given that in the Jundiaí Cohort, from 695 pregnant mothers initially accompanied, only 53  
245 (7.6 %) were confirmed ZIKV-infected, from which only 35% of their liveborn children had  
246 confirmed ZIKV-infection and from only 4.5 % had microcephaly<sup>39,40</sup>. Meanwhile, in the Rio de  
247 Janeiro Cohort, from 224 infants accompanied since birth, 156 (70 %) had confirmed ZIKV-  
248 infection, from which 62 (40 %) had microcephaly<sup>14,30,36</sup>. In other words, despite their different sizes  
249 (Jundiaí being a much larger cohort than Rio de Janeiro), Rio de Janeiro's children presented 10

250 times more confirmed ZIKV-infected children, and in the infected children a 10 times greater chance  
251 of presenting microcephaly.

252 Even though these differences may be partly due to different selection criteria by the IFF  
253 Fiocruz research team (while the Rio de Janeiro Cohort followed only symptomatic pregnant mothers  
254 or children with suspected ZIKV-infection, the Jundiaí Cohort followed pregnant women  
255 irrespectively of presence of ZIKV-infection symptoms), this alone does not explain the different  
256 numbers of microcephaly and fundus alteration between the two samples, nor the differences in  
257 ZIKV-infection and microcephaly incidence between them . These differences may be due to  
258 differences in virus strains<sup>41,42</sup> present in the two states. They may also be due to differences of  
259 immunologic resistance between the two populations, due to previous exposure to other viral agents,  
260 nutritional profile or genetic differences<sup>26</sup>.

261 Considering that most (95%) children evaluated here were below the lower VA normative  
262 values per age, it is important to note that 26 % were only marginally below that limit. This, coupled  
263 with the fact that most children (92%) performed at least one task in the visual function sets, suggests  
264 some of them, even though heavily visually impaired, may benefit of visual rehabilitation programs,  
265 which might contribute to mitigate some of the visual damages suffered.

266 Only binocular evaluations were performed due to time constraints, which makes it difficult  
267 to directly relate the VA outcomes with retinal damage, since visual losses in the affected eye in  
268 monocular lesions might be compensated by the unaffected eye. Additionally measured VA varied  
269 widely in the investigated sample, and attentional, neurological and eye motility issues (such as  
270 nystagmus) may have contributed to this variability. Several precautions were taken to minimize such  
271 factors (displaying the cards vertically for children with horizontal nystagmus and testing at a 38 cm  
272 distance for all children), but those potential extraneous influences must be considered.

273 Most children (87 %) assessed in our study were older than 24 months at the time of testing.  
274 No studies dedicated to CZS have reported VA measurements for this age range yet. VA assessments

275 at this age range have fewer developmental sources of variability and might offer a VA measurement  
276 that best captures visual function of those patients at school age and later in adulthood. However,  
277 since this age range has a very slight increase in VA development it was not possible to evaluate the  
278 VA development of this sample.

279

280

281

282

283

## 284 **5 References**

285

- 286 1. Moore CA, Staples JE, Dobyns WB, et al. Characterizing the pattern of anomalies in  
287 congenital zika syndrome for pediatric clinicians. *JAMA Pediatr.* 2017;171(3):288-295.  
288 doi:10.1001/jamapediatrics.2016.3982
- 289 2. Ventura LO, Ventura C V., Lawrence L, et al. Visual impairment in children with congenital  
290 Zika syndrome. *J AAPOS.* 2017;21(4):295-299.e2. doi:10.1016/j.jaapos.2017.04.003
- 291 3. Costello A, Dua T, Duran P, et al. Defining the syndrome associated with congenital Zika  
292 virus infection. *Bull World Health Organ.* 2016;94(6):406-406A. doi:10.2471/BLT.16.176990
- 293 4. Van Der Linden V, Filho ELR, Lins OG, et al. Congenital Zika syndrome with arthrogryposis:  
294 Retrospective case series study. *BMJ.* 2016;354. doi:10.1136/bmj.i3899
- 295 5. Passos SD, Zanotto PMDA. Infecção Vertical pelo vírus ZIKA e suas repercussões na área  
296 materno-infantil. Published online 2016.
- 297 6. Mlakar J, Korva M, Tul N, et al. Zika Virus Associated with Microcephaly. *N Engl J Med.*  
298 2016;374(10):951-958. doi:10.1056/NEJMoa1600651
- 299 7. Cugola FR, Fernandes IR, Russo FB, et al. The Brazilian Zika virus strain causes birth defects  
300 in experimental models. *Nature.* 2016;534(7606):267-271. doi:10.1038/nature18296
- 301 8. Ventura C V., Maia M, Ventura B V., et al. Ophthalmological findings in infants with  
302 microcephaly and presumable intra-uterus Zika virus infection. *Arq Bras Oftalmol.*

- 303 2016;79(1):1-3. doi:10.5935/0004-2749.20160002
- 304 9. de Paula Freitas B, Ko AI, Khouri R, et al. Glaucoma and Congenital Zika Syndrome.  
305 *Ophthalmology*. 2017;124(3):407-408. doi:10.1016/j.ophtha.2016.10.004
- 306 10. Zin AA, Tsui I, Rossetto JD, et al. Visual function in infants with antenatal Zika virus  
307 exposure. *J AAPOS*. 2018;22(6):452-456.e1. doi:10.1016/j.jaapos.2018.07.352
- 308 11. Verçosa I, Carneiro P, Verçosa R, et al. The visual system in infants with microcephaly related  
309 to presumed congenital Zika syndrome. *J AAPOS*. 2017;21(4):300-304.e1.  
310 doi:10.1016/j.jaapos.2017.05.024
- 311 12. Ventura LO, Ventura C V., Dias N de C, et al. Visual impairment evaluation in 119 children  
312 with congenital Zika syndrome. *J AAPOS*. 2018;22(3):218-222.e1.  
313 doi:10.1016/j.jaapos.2018.01.009
- 314 13. De Paula Freitas B, De Oliveira Dias JR, Prazeres J, et al. Ocular findings in infants with  
315 microcephaly associated with presumed zika virus congenital infection in Salvador, Brazil.  
316 *JAMA Ophthalmol*. 2016;134(5):529-535. doi:10.1001/jamaophthalmol.2016.0267
- 317 14. Tsui I, Moreira MEL, Rossetto JD, et al. Eye Findings in Infants With Suspected or Confirmed  
318 Antenatal Zika Virus Exposure. *Pediatrics*. 2018;142(4):e20181104. doi:10.1542/peds.2018-  
319 1104
- 320 15. Zin AA, Tsui I, Rossetto J, et al. Screening criteria for ophthalmic manifestations of congenital  
321 zika virus infection. *JAMA Pediatr*. 2017;171(9):847-854.  
322 doi:10.1001/jamapediatrics.2017.1474
- 323 16. Verçosa I, Carneiro P, Verçosa R, et al. The visual system in infants with microcephaly related  
324 to presumed congenital Zika syndrome. *J AAPOS*. 2017;21(4):300-304.e1.  
325 doi:10.1016/j.jaapos.2017.05.024
- 326 17. Baran LCP, Costa MF, Vidal KS, et al. Alterations in visual acuity and visual development in  
327 infants 1-24 months old either exposed to or infected by Zika virus during gestation, with and  
328 without microcephaly. *J AAPOS*. 2019;23(4):215.e1-215.e7. doi:10.1016/j.jaapos.2019.03.005
- 329 18. Lima DS , Baran LCP, Hamer RD, et al. Longitudinal visual acuity development in ZIKV-  
330 exposed children. *J AAPOS*. 2020;24(1):23.e1-23.e6. doi:10.1016/j.jaapos.2019.11.005
- 331 19. de Oliveira WK, de França GVA, Carmo EH, Duncan BB, de Souza Kuchenbecker R,

- 332 Schmidt MI. Infection-related microcephaly after the 2015 and 2016 Zika virus outbreaks in  
333 Brazil: a surveillance-based analysis. *Lancet*. 2017;390(10097):861-870. doi:10.1016/S0140-  
334 6736(17)31368-5
- 335 20. Teller DY. The forced-choice preferential looking procedure: A psychophysical technique for  
336 use with human infants. *Infant Behav Dev*. 1979;2(1):135-153. doi:10.1016/S0163-  
337 6383(79)80016-8
- 338 21. Mayer DL, Fulton AB, Sossen PL. Preferential looking acuity of pediatric patients with  
339 developmental disabilities. *Behav Brain Res*. 1983;10(1):189-197. doi:10.1016/0166-  
340 4328(83)90164-X
- 341 22. Salomao SR, Ventura DF. Large sample population age norms for visual acuities obtained  
342 with Vistech-Teller Acuity Cards. *Investig Ophthalmol Vis Sci*. 1995;36(3):657-670.
- 343 23. Birch EE, Bane MC. Forced Choice Preferential Looking Acuity of Children with Cortical  
344 Visual Impairment. *Dev Med Child Neurol*. 1991;33(8):722-729.
- 345 24. Ph.D. BGH, M.D. JR. Effect of Mental Retardation and Motor Disability on Testing with  
346 Visual Acuity Cards. *Dev Med Child Neurol*. 1992;34(2):115-122.
- 347 25. Manual I. Reference and Instruction Manual Teller Acuity Cards <sup>TM</sup> Ii. Published online 2005.
- 348 26. Caires-Júnior LC, Goulart E, Melo US, et al. Discordant congenital Zika syndrome twins show  
349 differential in vitro viral susceptibility of neural progenitor cells. *Nat Commun*. 2018;9(1):1-  
350 11. doi:10.1038/s41467-017-02790-9
- 351 27. Pedrosa C da SG, Souza LRQ, Gomes TA, et al. The cyanobacterial saxitoxin exacerbates  
352 neural cell death and brain malformations induced by zika virus. *PLoS Negl Trop Dis*.  
353 2020;14(3):1-13. doi:10.1371/journal.pntd.0008060
- 354 28. Barbeito-Andrés J, Pezzuto P, Higa LM, et al. Congenital Zika syndrome is associated with  
355 maternal protein malnutrition. *Sci Adv*. 2020;6(2). doi:10.1126/sciadv.aaw6284
- 356 29. World Medical Association. World Medical Association Declaration of Helsinki. *Bull world*  
357 *Heal Organ*. 2001;79(4):373-374. doi:S0042-96862001000400016 [pii]
- 358 30. Zin AA, Tsui I, Rossetto JD, et al. Visual function in infants with antenatal Zika virus  
359 exposure. *J AAPOS*. 2018;22(6):452-456.e1. doi:10.1016/j.jaapos.2018.07.352
- 360 31. Oliveira AGF, Costa MF, De Souza JM, Ventura DF. Contrast sensitivity threshold measured



- 361 by sweep-visual evoked potential in term and preterm infants at 3 and 10 months of age.  
362 *Brazilian J Med Biol Res.* 2004;37(9):1389-1396. doi:10.1590/S0100-879X2004000900014
- 363 32. Dobson V, Mayer DL, Lee CP. Visual acuity screening of preterm infants. *Investig*  
364 *Ophthalmol Vis Sci.* 1980;19(12):1498-1505.
- 365 33. Weinacht S, Kind C, Mönting JS, Gottlob I. Visual development in preterm and full-term  
366 infants: a prospective masked study. *Invest Ophthalmol Vis Sci.* 1999;40(2):346-353.
- 367 34. Baraldi P, Ferrari F, Fonda S, Penne A. Vision in the neonate (full-term and premature):  
368 Preliminary result of the application of some testing methods. *Doc Ophthalmol.* 1981;51(1-  
369 2):101-112. doi:10.1007/BF00140882
- 370 35. S. Kos-Pietro, V. L. Towle, R. Cakmur J-PS. Maturation of Human Visual Evoked Potentials:  
371 27 Weeks Conceptional Age to 2 Years. *Neuropediatrics.* 1997;28(6):318-323.
- 372 36. Moreira MEL, Nielsen-Saines K, Brasil P, et al. Neurodevelopment in Infants Exposed to Zika  
373 Virus In Utero. *N Engl J Med.* 2016;24(379):4-5.
- 374 37. Cheek PJ, McCullagh P, Nelder JA. Generalized Linear Models, 2nd Edn. *Appl Stat.*  
375 1990;39(3):385. doi:10.2307/2347392
- 376 38. Seabold S, Perktold J. Statsmodels: Econometric and Statistical Modeling with Python. *Proc*  
377 *9th Python Sci Conf.* 2010;(Scipy):92-96. doi:10.25080/majora-92bf1922-011
- 378 39. Sanchez Clemente N, Rodrigues M, Pascalicchio AP, et al. Cohort profile: The Jundiaí Zika  
379 cohort (JZC), a pregnancy and birth cohort in São Paulo state, Brazil. *BMJ Open.* 2019;9(8):1-  
380 11. doi:10.1136/bmjopen-2018-027947
- 381 40. Sanchez Clemente N, Brickley EB, Paixão ES, et al. Zika virus infection in pregnancy and  
382 adverse fetal outcomes in São Paulo State, Brazil: a prospective cohort study. *Sci Rep.*  
383 2020;10(1):1-10. doi:10.1038/s41598-020-69235-0
- 384 41. Kasprzykowski JI, Fukutani KF, Fabio H, et al. A recursive sub-typing screening surveillance  
385 system detects the appearance of the ZIKV African lineage in Brazil: Is there a risk of a new  
386 epidemic? *Int J Infect Dis.* 2020;96:579-581. doi:10.1016/j.ijid.2020.05.090
- 387 42. Strottmann DM, Zanluca C, Mosimann ALP, et al. Genetic and biological characterization of  
388 zika virus isolates from different Brazilian regions. *Mem Inst Oswaldo Cruz.* 2019;114(7):1-  
389 11. doi:10.1590/0074-02760190150

390

391 **Figure Subtitles**

Figure 1. Visual acuity (VA) outcomes. The left panel shows VA compared to the normative values published by Salomão & Ventura (1995). The right panel shows acuity as an offset from the mean acuity for the patient's age. 6/41 (15%) of patients presented an acuity value falling below this criteria.

392

393