

1 **Deploying wearable sensors for pandemic mitigation**

2 Nathan Duarte B.A.Sc.¹, Rahul K. Arora B.H.Sc.^{2,3}, Graham Bennett B.A.⁴, Meng Wang Ph.D.⁵, Michael P. Snyder Ph.D.⁵,
3 Jeremy R. Cooperstock Ph.D.¹, Caroline E. Wagner Ph.D.^{6*}

- 4
- 5 1. Department of Electrical and Computer Engineering, Faculty of Engineering, McGill University, Montreal,
6 Canada.
 - 7 2. Department of Community Health Sciences, University of Calgary, Calgary, Canada.
 - 8 3. Institute of Biomedical Engineering, University of Oxford, Oxford, United Kingdom.
 - 9 4. Department of Economics, Faculty of Arts, McGill University, Montreal, Canada.
 - 10 5. Department of Genetics, Stanford University School of Medicine, Stanford University, California, United States
11 of America.
 - 12 6. Department of Bioengineering, Faculty of Engineering, McGill University, Montreal, Canada.

13
14 * **Corresponding Author:** Caroline E. Wagner (caroline.wagner@mcgill.ca; +1-438-399-7911)
15

16 **ABSTRACT**

17

18 Wearable sensors can continuously and passively detect potential respiratory infections, before or absent symptoms.
19 However, the population-level impact of deploying these devices during pandemics is unclear. We built a compartmental
20 model of Canada's second COVID-19 wave and simulated wearable sensor deployment scenarios, systematically varying
21 detection algorithm accuracy, uptake, and adherence. With current detection algorithms and 4% uptake, we found that
22 deploying wearable sensors could have averted 9% of second wave SARS-CoV-2 infections, though 29% of this reduction is
23 attributed to incorrectly quarantining uninfected device users. Improving detection specificity and offering confirmatory
24 rapid tests each minimized incorrect quarantines and associated costs. With a sufficiently low false positive rate, increasing
25 uptake and adherence became effective strategies for scaling averted infections. We concluded that wearable sensor
26 deployment can meaningfully contribute to pandemic mitigation; in the case of COVID-19, technology improvements or
27 supporting measures are required to reduce social and economic costs to acceptable levels.

28

29 Key Words: wearable sensors, public health, asymptomatic, presymptomatic, SARS-CoV-2, COVID-19

30

31 INTRODUCTION

32
33 Infectious disease outbreaks can have devastating health and economic consequences. Effective public health strategies are
34 crucial for limiting transmission and minimizing these harms. One approach to controlling viral spread during pandemics –
35 a “Find, Test, Trace, Isolate” (FTTI) strategy – relies on identifying and quarantining infectious individuals¹. However, the
36 COVID-19 pandemic has demonstrated that FTTI systems reliant on lab-based tests are often limited by missed hidden
37 infection chains, which result from presymptomatic and asymptomatic transmission, and slow test result turnaround
38 times^{2,3}. Digital contact tracing and frequent use of rapid tests have the potential to fill these gaps, but both approaches have
39 faced implementation barriers: inadequate participation levels, concerns around privacy and feasibility, and limited test
40 availability⁴⁻⁶.

41
42 Wearable sensors have already been established as tools to detect deviations from users’ physiological baselines⁷. Recent
43 findings suggest that wearable sensors may also be able to detect infections caused by respiratory pathogens, including SARS-
44 CoV-2, before or absent symptoms⁸⁻¹⁰. Alavi *et al*, for example, developed an algorithm that analyzes patterns in smartwatch-
45 captured overnight resting heart rate and provides real-time alerts of potential presymptomatic and asymptomatic SARS-
46 CoV-2 infection¹⁰. If such algorithms were widely deployed, wearable sensors could be promising tools for outbreak
47 mitigation, enabling FTTI systems to more rapidly identify (and subsequently isolate) infectious individuals, particularly
48 those without symptoms. Wearable sensors would also offer the unique benefit of passive monitoring, which minimizes
49 required user engagement, and could operate in privacy-preserving fashion because sensor data would not need to be shared
50 with a centralized database. With these potential benefits in mind, several studies have focused on developing wearable
51 sensor-based infectious disease detection algorithms; however, to the best of our knowledge, the real-world impact of
52 deploying these devices for pandemic mitigation has yet to be explored.

53
54 In this study, we assessed how wearable sensors can help reduce the burden of infection during a pandemic with the
55 overarching goal of guiding future research investment and policy. To do so, we used COVID-19 as an example and explored
56 counterfactual scenarios in which these devices were deployed to combat Canada’s second wave. We built a compartmental
57 epidemiological model in which wearable devices notify users of potential infection and prompt users to seek a confirmatory
58 lab-based test, self-isolating while waiting for the result. We aimed to (1) assess the baseline impact of deploying currently
59 available detection algorithms, (2) investigate how detection accuracy and behavioural parameters influence this impact, and
60 (3) explore a complementary strategy in which rapid antigen tests are used to confirm wearable-informed notifications of
61 potential infection.

62

63 **METHODS**

64

65 **Counterfactual Scenarios**

66 We simulated Canada’s second COVID-19 wave (September 1, 2020 to February 20, 2021). This time window allowed us
 67 to capture the dynamics of wearable sensor deployment during an acute phase of the pandemic, prior to broad vaccine
 68 availability, and at a time when the technology would have been ready and deployable.

69

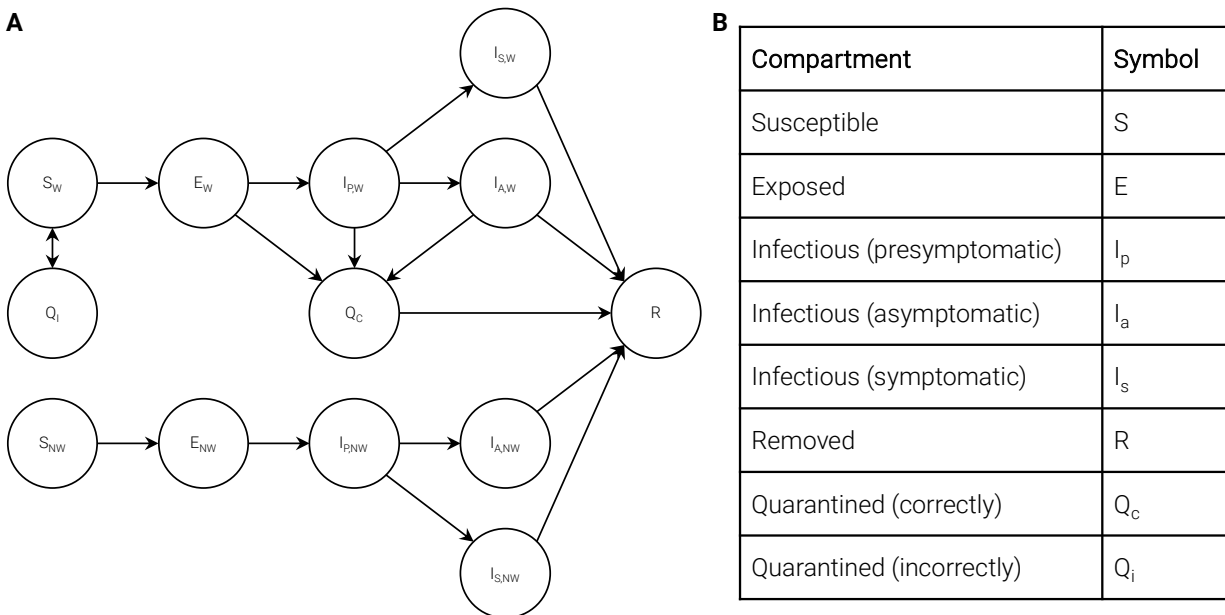
70 First, we considered a baseline scenario in which wearable device users can download an application with currently available
 71 detection algorithms¹⁰. Then, we investigated the impact of technology and behavioural parameters: detection sensitivity and
 72 specificity; uptake, defined as the proportion of the population that has downloaded the application and uses their wearable
 73 device often enough; and adherence, defined as the proportion of users who comply with recommended next steps after a
 74 positive notification. Finally, we explored a complementary intervention where wearable device users with a positive
 75 notification are offered a confirmatory rapid antigen test before they are prompted to seek a lab-based test and self-isolate.

76

77 **Model description**

78 We built a compartmental model based on a *Susceptible, Exposed, Infectious, Removed (SEIR)* framework (Figure 1). We split
 79 the *Infectious* state into three sub-states: *Presymptomatic, Asymptomatic,* and *Symptomatic*. All infected individuals enter the
 80 *Presymptomatic* infectious state after a latency period following exposure; some go on to develop symptoms (*Symptomatic*)
 81 while others do not (*Asymptomatic*).

82



83

84 **Figure 1: Compartmental model.** Subscript “W” denotes a wearable user and “NW” indicates otherwise. Two key model equations are
 85 presented below; remaining parameters, equations, and assumptions are outlined in Supplementary Appendix Section 1.

86

87 To incorporate wearable sensor deployment, we stratified *Susceptible, Exposed,* and *Infectious* states by whether individuals
 88 are device users or not. Wearable device users can enter *Quarantined* states if they are notified of potential infection, and if
 89 they adhere to this notification by seeking a confirmatory lab-based test and self-isolating while awaiting the result. We made
 90 the simplifying assumption that users notified of potential infection either adhered to all recommended next steps or ignored
 91 the notification. We set the nominal lab-based test turnaround time to 2 days, and explored faster and slower turnaround
 92 times in Supplementary Appendix Section 5¹¹. *Susceptible* users could be *Incorrectly Quarantined* due to a false positive
 93 notification and would re-enter the *Susceptible* state after receiving their lab-based test result. *Exposed* and *Infectious* device

94 users would be *Correctly Quarantined* and would enter the *Removed* state (a longer quarantine until recovery) after their lab-
95 based test confirms infection.

96
97 We assumed perfect lab-based test accuracy and did not account for potential reinfections, which were likely negligible
98 during the simulation period¹². We did not include a pathway for *Symptomatic* device users to enter *Quarantined* states
99 because it is likely that a large fraction of these individuals already underwent some degree of self-isolation – behaviour
100 accounted for in the historical transmission rate (β). In some scenarios, we also included a step where compliant users take a
101 confirmatory rapid antigen test: if positive, we assumed they then take a lab-based test, self-isolating while awaiting the result;
102 if negative, we assumed they return to normal behaviour. We investigated the impact of antigen test sensitivity in
103 Supplementary Appendix Section 5.

104 105 **Simulation approach**

106 To perform simulations, we first extracted the historical transmission rate (β) from the Institute for Health Metrics and
107 Evaluation (IHME) infection model, a time series “nowcasting” model for incidence of infection in Canada (π)¹³. The IHME
108 model estimates π by analyzing trends in confirmed cases, hospitalizations, and deaths; it validates the inferred π using
109 seroprevalence data. We downloaded these data from the IHME website on December 7, 2021. We used modelled values for
110 the incidence of infection because confirmed case counts are subject to incomplete case ascertainment and thereby
111 underestimate the extent of infection¹⁴. We calculated β from π using Equation (1); this time series for the historical
112 transmission rate incorporates all policy (e.g., restrictions, business closures, testing availability) and behavioural (e.g.,
113 adherence to restrictions, quarantines) measures that occurred. N represents the size of the entire population and λ represents
114 the transmission potential in infected individuals without symptoms relative to those with symptoms.

$$115 \quad \beta = \frac{\pi N}{S(\lambda I_p + \lambda I_a + I_s)} \quad (1)$$

$$116 \quad \pi = \frac{\beta}{N} \left[\lambda(a I_{p,w} + I_{p,nw} + a I_{a,w} + I_{a,nw}) + (I_{s,w} + I_{s,nw}) \right] \left[S_w + S_{nw} \right] \quad (2)$$

117
118 We then applied β according to Equation (2) to simulate counterfactual scenarios. Because some *Susceptible*, *Exposed*, and
119 *Infectious* device users undergo self-isolation in the simulations, overall transmission decreases even though the transmission
120 rate for all others remains unchanged. In Supplementary Appendix Section 5, we investigated the possibility that users not
121 notified of potential infection act in a riskier fashion relative to historical behaviour¹⁵. a is a coefficient used to study this
122 possibility and is nominally set to 1. Other model parameters, equations, and assumptions are presented in Supplementary
123 Appendix Section 1.

124
125 We modeled asymptomatic prevalence (ρ), detection algorithm sensitivity (σ_w) and specificity (ν_w), and adherence (ψ) as beta-
126 distributed random variables because these parameters were important sources of variance in our assessment of wearable
127 sensors as pandemic mitigation tools. We sampled these variables and used the resulting values to generate an epidemic
128 trajectory. We repeated this process 1,000 times, using these Monte Carlo simulations to model uncertainty in our estimates.

129 130 **Outcome measures**

131 We calculated the number of averted infections and the percent reduction in the burden of infection to quantify the health
132 impact of wearable sensor deployment. We measured the number of days incorrectly spent in quarantine per month per
133 device user (a consequence of false positive notifications) as the primary indicator of the strategy’s social burden. To assess
134 resource consumption, we quantified the number of additional lab-based tests (and rapid antigen tests, where applicable)
135 required each day, on average. Finally, to provide more complete intuition around offering rapid antigen tests as a

136 complementary intervention, we generated a first-order estimate of net healthcare expenditures in applicable scenarios,
137 subtracting savings from costs. We approximated savings as the costs avoided by averting hospitalizations: we multiplied
138 averted infections, the infection hospitalization ratio, and the average cost per hospitalization. We inferred the infection
139 hospitalization ratio by dividing the total number of COVID-19 hospitalizations by the total number of infections during
140 the simulation period. We approximated costs as expenditures required to fund lab-based tests and rapid antigen tests.
141 Further details on this economic analysis are provided in Supplementary Appendix Section 3. We adhered to CHEERS
142 guidelines for health economics cost benefit analyses¹⁶.
143

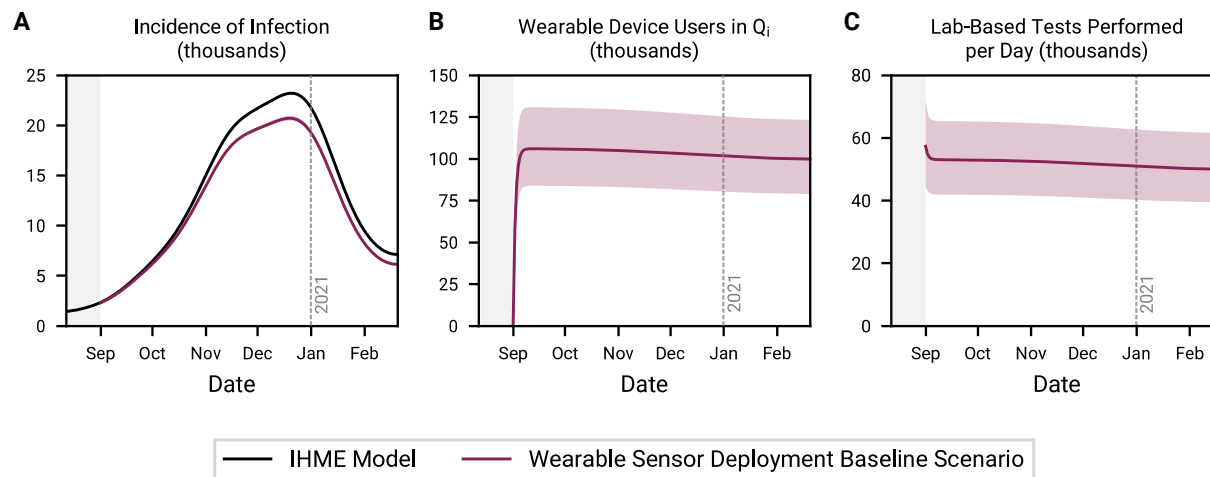
144 RESULTS

145

146 Baseline impact of wearable sensor deployment

147 We first investigated the baseline scenario in which detection algorithms that currently exist are made publicly available for
148 device users to download and use (Figure 2)¹⁰. Upon notification of potential presymptomatic or asymptomatic infection,
149 users are prompted to seek a confirmatory lab-based test, self-isolate while awaiting the result (nominally, for 2 days), and
150 quarantine until recovery if positive. We used the nominal parameters in Supplementary Table 2, setting uptake, adherence,
151 detection sensitivity, and detection specificity to 4%, 50%, 80%, and 92%, respectively.

152



153

154 **Figure 2: Baseline scenario for wearable sensor deployment.** Time series depiction of the incidence of infection (A), the number of
155 wearable device users incorrectly in quarantine (B), and the daily demand for lab-based tests (C). Uptake, adherence, detection sensitivity,
156 and detection specificity are set to 4%, 50%, 80%, and 92%, respectively.

157

158 With 4% uptake, 219,700 (95% CI: 198,700–241,600) infections could have been averted during Canada’s second COVID-
159 19 wave – a 9.4% (95% CI: 8.5–10.3%) reduction in the burden of infection. However, the social costs were high: between
160 ~75,000 and ~125,000 device users were incorrectly self-isolating on any given day (Figure 2b). Moreover, between ~40,000
161 and ~65,000 additional lab-based tests were required each day (Figure 2c), corresponding to a 51.8% (95% CI: 41.0–64.0%)
162 increase in demand relative to historical volumes. Historically, ~101,000 lab-based tests were performed each day, on average,
163 during the simulation time frame^{13,17}. The number of individuals incorrectly in quarantine and daily demand for lab-based
164 tests were steady over time because they depend on the number of *Susceptible* device users, adherence, and detection
165 specificity; the gradual decrease can be attributed to the flow of users into the *Removed* state.

166

167 Tradeoff between detection algorithm sensitivity and specificity

168 After their initial release on technology platforms, health detection algorithms can be updated and improved as more real-
169 world data are collected. However, it is often challenging to dramatically raise detection sensitivity and specificity at the same
170 time. We explored the implications of this tradeoff (Figure 3), varying detection sensitivity and specificity while keeping
171 uptake and adherence constant at 4% and 50%, respectively.

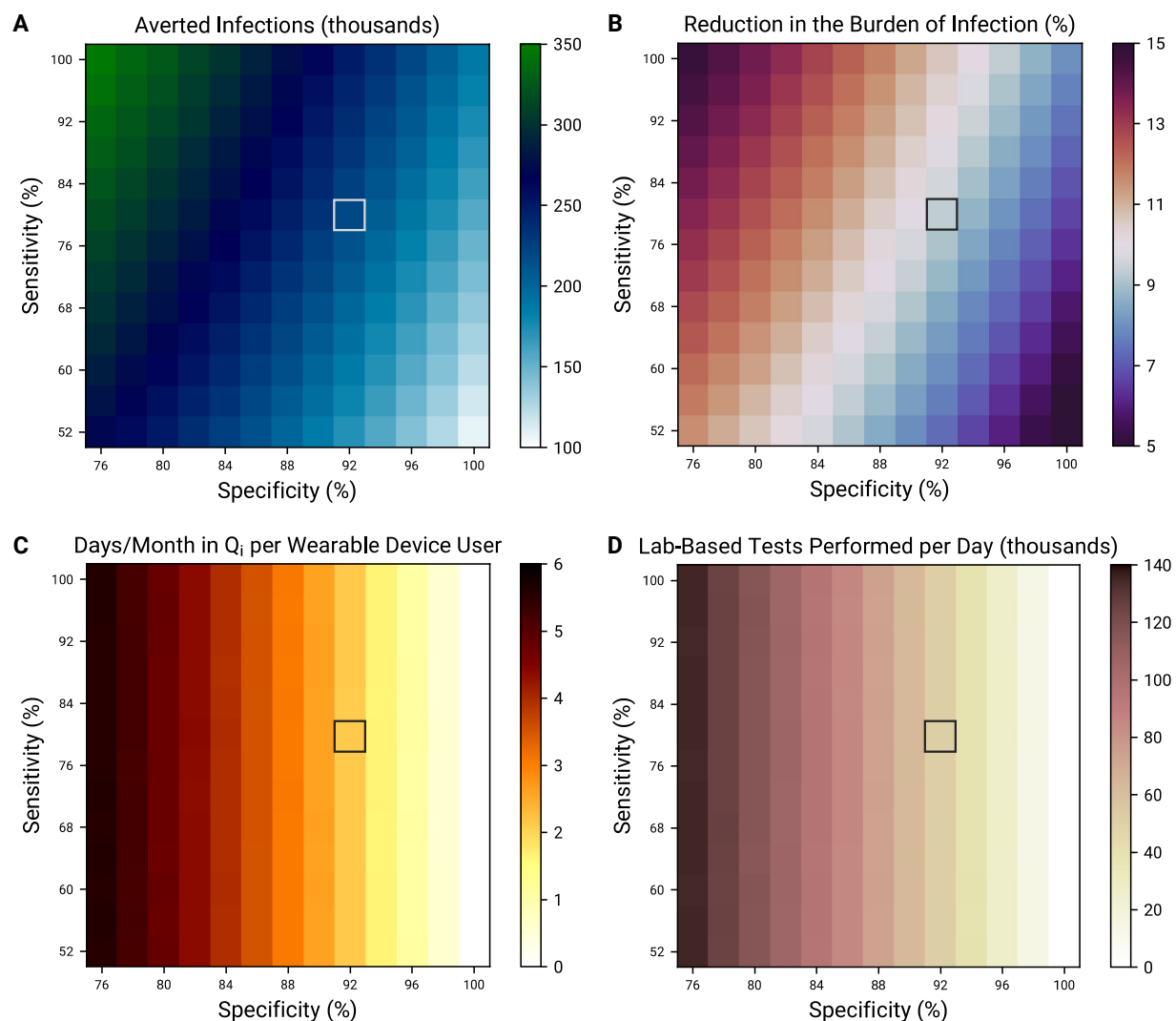
172

173 Increasing detection sensitivity increased the number of averted infections by prompting more *Infectious* users to self-isolate
174 (Figures 3a and 3b). On the other hand, increasing specificity had a two-part effect. First, as specificity approached 100%, the
175 number of days incorrectly spent self-isolating approached zero (Figure 3c); sensitivity had negligible impact on incorrect
176 quarantines. Second, by virtue of decreasing the number of incorrect quarantines, increasing specificity resulted in a larger
177 pool of *Susceptible* individuals; in turn, fewer infections were averted. However, despite this second effect, incorrect
178 quarantines were not central to the strategy’s public health impact. In the baseline scenario presented above (80% detection
179 sensitivity, 4% uptake, and 50% adherence), a 6.7% (5.9–7.3%) reduction in the burden of infection was still achievable with

180 perfect detection specificity. As well, while 28.6% (95% CI: 18.3–38.2%) of averted infections could be attributed to incorrect
181 quarantines in the baseline scenario, this proportion decreased as sensitivity improved (Supplementary Figure 4).

182
183 In theory, increasing detection sensitivity would increase demand for lab-based tests; however, this effect paled in comparison
184 to the number of lab-based tests prompted by false positive notifications (Figure 3d). Lab-based test demand expectedly
185 decreased as detection specificity increased.

186



187
188 **Figure 3: Tradeoff between detection sensitivity and specificity.** Averted infections (A), reduction in the burden of infection (B),
189 days incorrectly spent in quarantine per month per device user (C), and average daily demand for lab-based tests (D), all over the entire
190 simulation period, as a function of detection sensitivity and specificity. Grey boxes denote nominal sensitivity (80%) and specificity (92%).

191

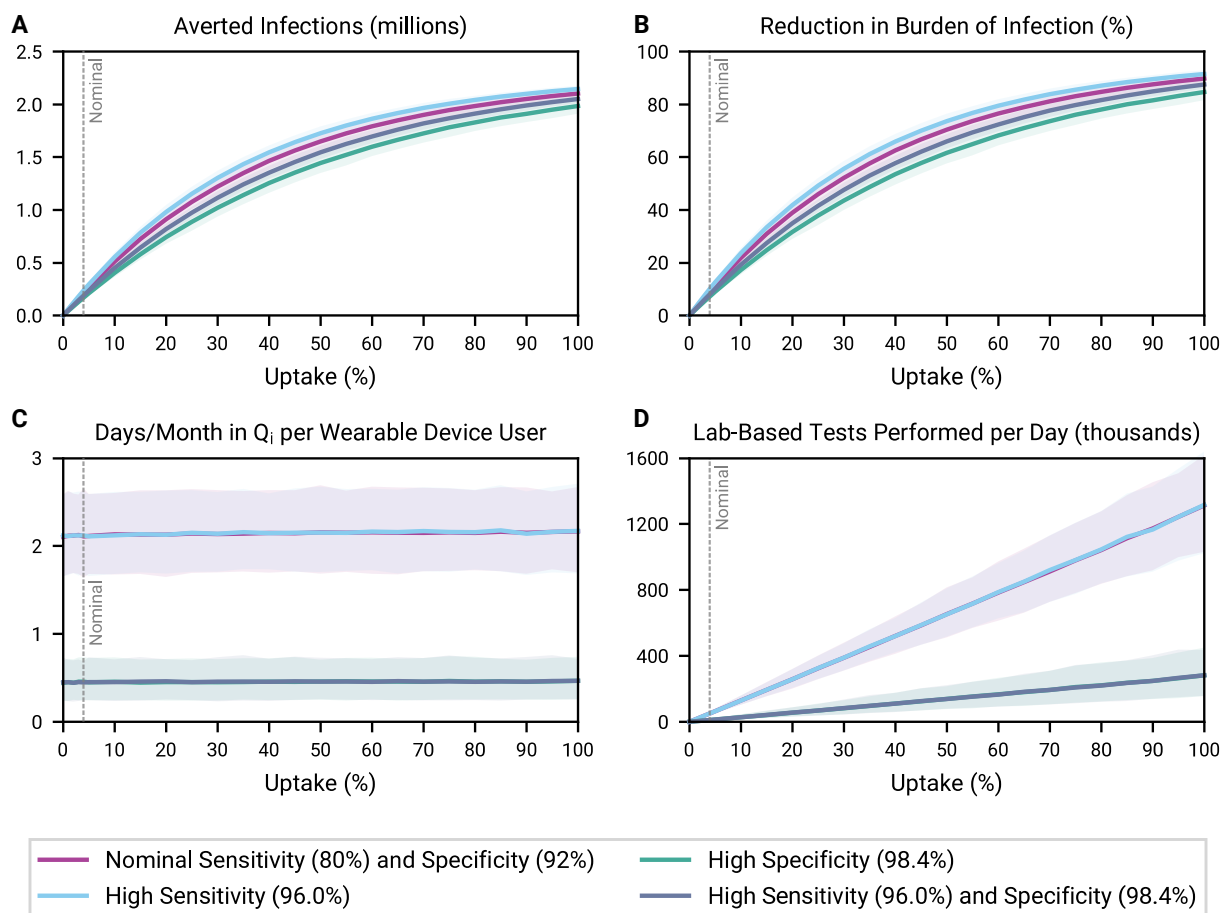
192 Impact of increasing uptake

193 Ensuring that public health measures reach sufficient levels of uptake has been a continued challenge through the COVID-
194 19 pandemic. Digital contact tracing and vaccination efforts have demonstrated that well-constructed policies – for example,
195 incentivizing participation – can improve uptake of measures^{18,19}. Here, we explored the role of uptake to provide relevant
196 context for the design of wearable sensor deployment policies (Figure 4; Supplementary Figure 1). We estimated that uptake
197 would fall between 0.5% and 7.5% (Supplementary Tables 2-4) at baseline but chose to present outcomes at all levels of
198 uptake to illustrate emergent phenomena. We also explored multiple technology scenarios, setting “high” detection

199 sensitivity and specificity at 96.0% and 98.4%, respectively; we based these increases on the respective goals of capturing 20%
 200 more infections and reducing the false positive rate by 80% relative to nominal values. We kept adherence constant at 50%.

201
 202 In all technology scenarios, increasing uptake averted more infections, though with diminishing returns (Figures 4a and 4b).
 203 As expected, improving detection specificity resulted in fewer averted infections when uptake is held constant; this effect was
 204 most pronounced at ~30% to ~60% uptake. The number of days incorrectly spent in quarantine per month per device user
 205 remained constant as a function of uptake but decreased from ~2.15 to ~0.45 when detection specificity was increased
 206 (Figure 4c). This ~80% decrease was consistent with our definition of “high specificity” demonstrating that detection
 207 specificity directly influences the burden of incorrect quarantines on device users. The average daily demand for lab-based
 208 tests scaled linearly with uptake, but at a slower rate with improved detection specificity (Figure 4d).

209



210
 211 **Figure 4: Impact of increasing uptake under different technology assumptions.** Averted infections (A), reduction in the burden of
 212 infection (B), days incorrectly spent in quarantine per month per device user (C), and average daily demand for lab-based tests (D), all over
 213 the entire simulation period, as a function of increasing uptake. Grey dashed lines denote nominal uptake (4%). In the High Sensitivity
 214 and High Specificity scenarios, detection specificity and sensitivity are kept at their nominal values, respectively. In (C) and (D), the
 215 “Nominal Sensitivity and Specificity” and “High Sensitivity” curves overlap, and the “High Specificity” and “High Sensitivity and
 216 Specificity” curves overlap.

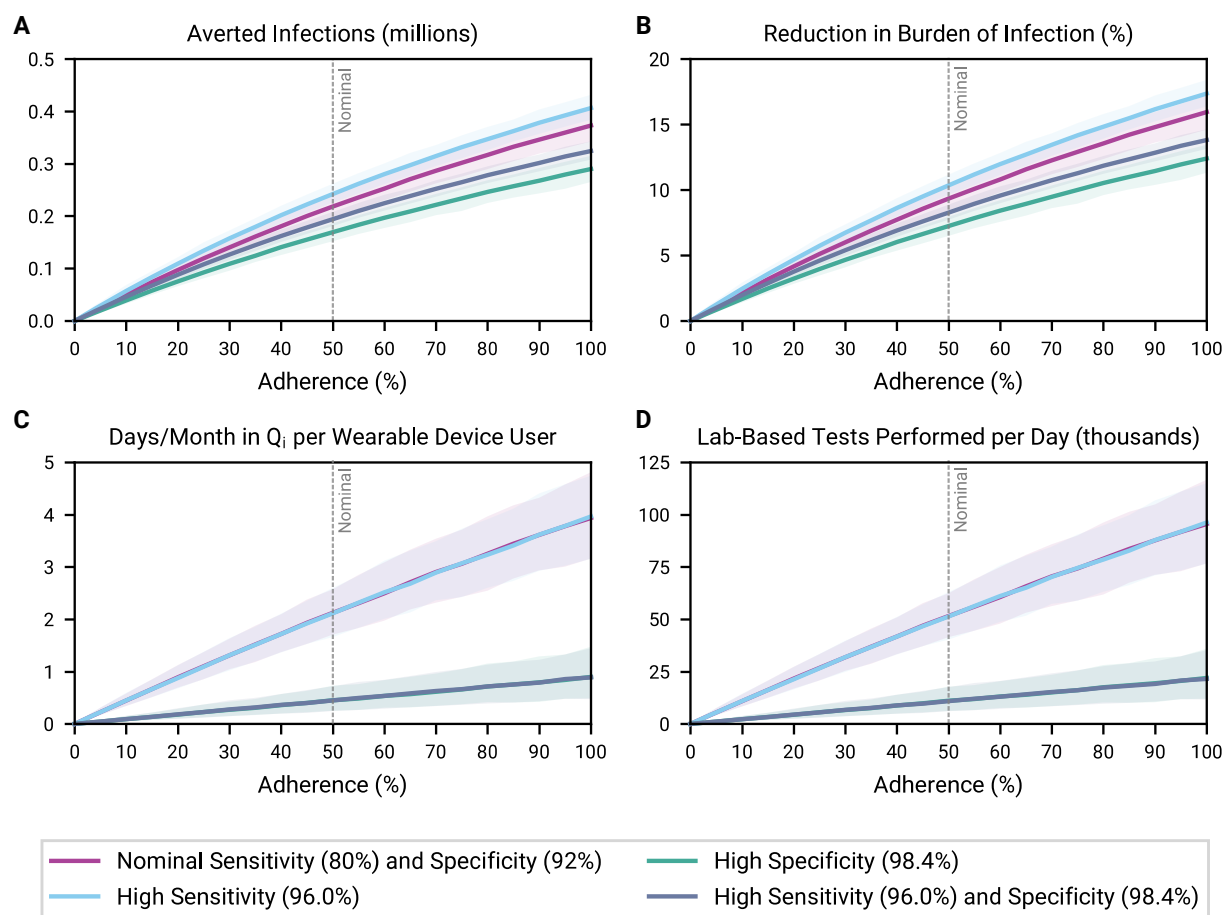
217

218 Impact of increasing adherence

219 Adherence to public health guidelines also impacts the success of pandemic control measures. Targeted policies – for
 220 example, compensating individuals in self-isolation – could help improve compliance with public health recommendations²⁰.
 221 Here, we explored the role of adherence in wearable sensor deployment strategies (Figure 5; Supplementary Figure 1). We

222 chose to present outcomes at all levels of adherence because compliance with public health guidelines could vary greatly, for
 223 example, from as low as 14% to as high as 86% (Supplementary Table 2). We kept uptake constant at 4% and assessed multiple
 224 technology scenarios using the same definitions of “high” detection sensitivity and specificity as above.
 225

226 Adherence meaningfully impacted the burden of infection (Figure 5b). For example, with nominal detection sensitivity and
 227 specificity, increasing adherence among participating wearable device users from 20% to 80% tripled the achieved reduction
 228 in the burden of infection, raising it from 4.2% (95% CI: 3.6–4.7%) to 13.6% (95% CI: 12.4–14.8%). However, increasing
 229 the proportion of users who comply with notifications also magnified the consequences of false positive notifications: the
 230 number of days incorrectly spent self-isolating per month per user (Figure 5c) and the demand for lab-based tests (Figure 5d)
 231 grew proportionally with adherence. These social and resource costs grew at a slower rate with improved detection specificity.
 232

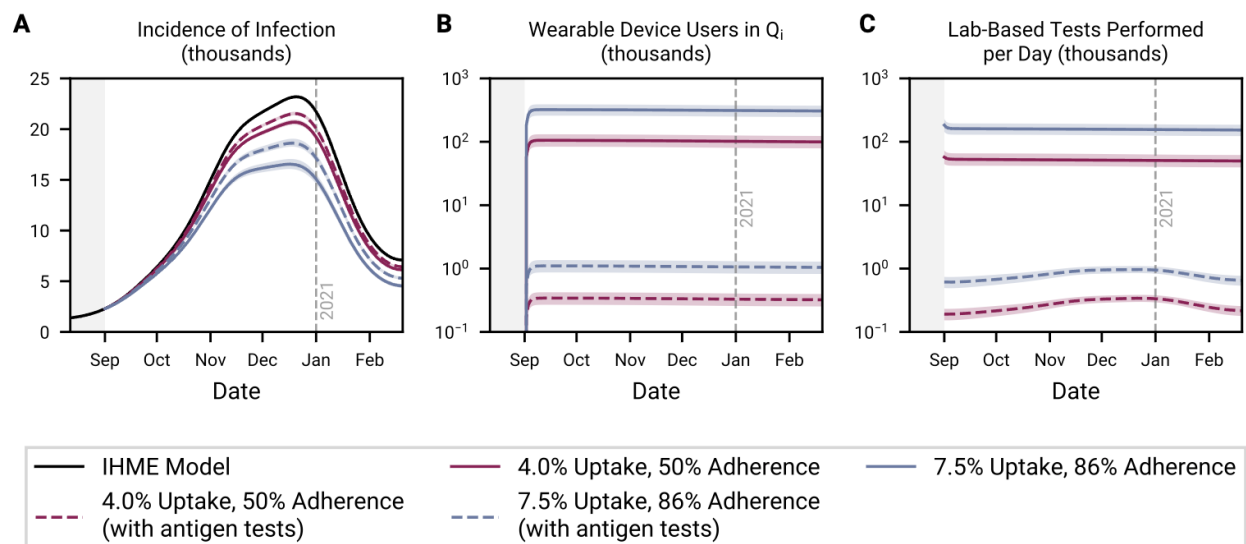


233 **Figure 5: Impact of increasing adherence under different technology assumptions.** Averted infections (A), reduction in the burden
 234 of infection (B), days incorrectly spent in quarantine per month per device user (C), and average daily demand for lab-based tests (D), all
 235 over the entire simulation period, as a function of increasing adherence. Grey dashed lines denote nominal uptake (4%). In the High
 236 Sensitivity and High Specificity scenarios, detection specificity and sensitivity are kept at their nominal values, respectively. In (C) and (D),
 237 the “Nominal Sensitivity and Specificity” and “High Sensitivity” curves overlap, and the “High Specificity” and “High Sensitivity and
 238 Specificity” curves overlap.
 239

240
 241 **Impact of offering confirmatory rapid antigen tests**

242 Our earlier findings suggested that false positive notifications of potential infection were the primary cause of unnecessary
 243 quarantines and lab-based tests. Improving detection specificity was one way to decrease false positive notifications. Here,
 244 we investigated whether offering confirmatory rapid antigen tests to users with a positive notification could also contribute
 245 to reducing unnecessary quarantines and lab-based tests (Figure 6; Table 2; Supplementary Table 6). We considered multiple

246 scenarios, each with either low levels of uptake (0.5%) or adherence (14%), nominal levels of uptake (4%) or adherence (50%),
 247 or high levels of uptake (12.5%) or adherence (86%). We examined these scenarios in the cases of nominal detection sensitivity
 248 and specificity, and of “high” detection sensitivity and specificity (using the same definitions of “high” as above).
 249



250
 251 **Figure 6: Wearable sensor deployment with confirmatory antigen tests.** Time series depiction of the incidence of infection (A), the
 252 number of wearable device users incorrectly in quarantine (B), and the daily demand for lab-based tests (C). Detection sensitivity and
 253 specificity are set to their nominal values of 80% and 92%, respectively.
 254

255 **Table 2: Impact of offering confirmatory antigen tests under different technology assumptions.** 95% confidence intervals are
 256 listed in parentheses. Supplementary Table 6 depicts outcomes in analogous scenarios without rapid antigen tests.

Uptake (%)	Adherence (%)	Averted Infections (thousands)	Reduction in Burden of Infection (%)	Days/Month in Q_i per User (thousands)	Additional Lab-Based Tests Performed per Day	Additional Rapid Tests Performed per Day (thousands)	Net Savings (\$ million)
<i>Nominal Detection Sensitivity (80%) and Specificity (92%) Scenario</i>							
0.5	14	5.8 (5.0–6.6)	0.2 (0.2–0.3)	1.92 (1.48–2.46)	10 (8 – 12)	1.9 (1.5–2.5)	-0.1 (-0.5–0.3)
0.5	50	18.6 (16.4–20.5)	0.8 (0.7–0.9)	6.85 (5.27–8.55)	34 (29 – 40)	6.9 (5.3–8.6)	-0.9 (-2.5–0.6)
0.5	86	29.0 (26.0–31.4)	1.2 (1.1–1.3)	11.79 (9.20–14.70)	56 (48 – 65)	11.9 (9.3–14.9)	-2.4 (-5.2–0.1)
4.0	14	45.9 (39.2–53.2)	2.0 (1.7–2.3)	1.91 (1.47–2.42)	81 (67 – 95)	15.5 (11.9–19.6)	-0.7 (-4.4–2.7)
4.0	50	145.0 (128.9–159.7)	6.2 (5.5–6.8)	6.89 (5.40–8.49)	270 (230 – 312)	55.7 (43.7–68.7)	-8.3 (-20.6–3.1)
4.0	86	222.1 (200.9–240.9)	9.5 (8.6–10.3)	11.79 (9.35–14.87)	437 (376 – 511)	95.3 (75.7–120.2)	-21.7 (-44.9–1.7)
7.5	14	85.9 (72.7–99.4)	3.7 (3.1–4.2)	1.90 (1.41–2.46)	150 (123 – 180)	28.9 (21.4–37.3)	-1.1 (-8.3–5.5)
7.5	50	265.4 (235.6–291.7)	11.3 (10.1–12.4)	6.85 (5.32–8.55)	494 (420 – 574)	103.8 (80.7–129.6)	-16.7 (-41.7–4.3)
7.5	86	401.8 (363.6–433.0)	17.1 (15.5–18.5)	11.86 (9.34–14.63)	800 (681 – 926)	179.9 (141.6–221.7)	-45.9 (-84.1–10.3)
<i>High Detection Sensitivity (96.0%) and Specificity (98.4%) Scenario</i>							
0.5	14	6.9 (6.0–7.8)	0.3 (0.3–0.3)	0.38 (0.20–0.61)	6 (5 – 7)	0.4 (0.2–0.6)	1.7 (1.4–2.0)
0.5	50	21.6 (20.2–23.0)	0.9 (0.9–1.0)	1.36 (0.73–2.22)	20 (18 – 23)	1.4 (0.8–2.3)	5.1 (4.2–5.8)
0.5	86	33.2 (31.5–34.8)	1.4 (1.3–1.5)	2.34 (1.27–3.72)	31 (27 – 35)	2.4 (1.3–3.8)	7.6 (6.3–8.7)
4.0	14	54.7 (48.0–61.6)	2.3 (2.0–2.6)	0.38 (0.20–0.62)	50 (42 – 58)	3.2 (1.7–5.1)	13.2 (10.9–15.5)
4.0	50	168.4 (158.1–177.9)	7.2 (6.7–7.6)	1.36 (0.73–2.25)	151 (134 – 174)	11.1 (6.1–18.3)	39.5 (33.1–44.9)
4.0	86	254.2 (242.0–264.9)	10.8 (10.3–11.3)	2.37 (1.24–3.68)	228 (200 – 261)	19.3 (10.2–29.9)	57.5 (46.6–66.5)
7.5	14	101.6 (90.0–114.8)	4.3 (3.8–4.9)	0.38 (0.20–0.63)	92 (79 – 109)	5.9 (3.1–9.6)	24.6 (20.6–28.9)
7.5	50	306.6 (288.0–324.2)	13.1 (12.3–13.8)	1.36 (0.74–2.16)	270 (237 – 309)	20.8 (11.5–33.0)	71.7 (59.0–82.0)
7.5	86	455.4 (433.6–474.1)	19.4 (18.5–20.2)	2.40 (1.34–3.78)	399 (347 – 462)	36.7 (20.6–57.5)	101.4 (81.6–118.0)

257
 258 The use of antigen tests reduced the number of days incorrectly spent in quarantine by ~300-fold by increasing the “effective
 259 specificity” of the strategy (Figure 6b). That is, with antigen tests, the likelihood of a *Susceptible* user being incorrectly

260 prompted to quarantine on a given day fell from $(1 - \nu_w)$ to the product of $(1 - \nu_w)$ and $(1 - \nu_a)$, where ν_w and ν_a are detection
261 algorithm specificity and antigen test specificity, respectively. In earlier scenarios (Figures 4a and 5a), averted infections were
262 decreased by improving detection specificity more than they were increased by improving detection sensitivity; fewer
263 infections were averted in the high detection sensitivity and specificity scenarios than in the nominal detection sensitivity
264 and specificity scenarios. Here, the specificity contributed by the antigen tests diminished the relative impact of improving
265 detection specificity on averted infections: the “effective specificity” of the strategy was 99.976% with nominal detection
266 specificity and 99.995% with high detection specificity (Supplementary Table 2)²¹. Instead, improving detection sensitivity
267 was what increased the number of averted infections. Importantly, antigen tests had the secondary effect of decreasing the
268 strategy’s “effective sensitivity” – the product of antigen test sensitivity (91.1%) and detection algorithm sensitivity²¹.

269
270 Offering confirmatory rapid antigen tests also decreased the demand for lab-based tests by ~200-fold, providing the double
271 benefit of alleviating the burden on testing infrastructure and decreasing costs (Figure 6c). We earlier found that in a baseline
272 scenario (4% uptake, 50% adherence, 80% detection sensitivity, 92% detection specificity), between ~40,000 and ~65,000
273 additional lab-based tests would be required each day (Figure 2c). Here, in an analogous scenario, average daily demand
274 dropped to 270 (95% CI: 230–312) additional lab-based tests, with 55,700 (95% CI: 43,700–68,700) antigen tests being
275 performed each day instead (Table 2). Antigen tests were also more cost-effective tools than lab-based tests for confirming
276 *Susceptible* users with false positive notifications were not infectious. Accounting for the costs of lab-based tests and savings
277 associated with averted hospitalizations, we approximated that a baseline scenario would involve \$825.7 (95% CI: \$645.2–
278 1,035.7) million in net healthcare expenditures (Supplementary Table 6). Here, we approximated that the analogous scenario
279 would involve \$8.3 (95% CI: -3.1–20.6) million in net expenditures (Table 2). Unnecessary lab-based tests drove this ~10-
280 fold difference in costs.

281

282 DISCUSSION

283

284 We used a counterfactual model of Canada's second COVID-19 wave to demonstrate that wearable sensors capable of
285 detecting infectious diseases before or absent symptoms can be useful tools for pandemic mitigation. Through continuous
286 and non-invasive monitoring of physiological parameters, these devices can conceivably help FTTI systems identify hidden
287 infection chains with minimal delay and without active user engagement or broad sharing of user data. We showed that (1)
288 deploying today's detection algorithms could have meaningfully reduced the second wave burden of infection, but with
289 substantial social and resource costs; (2) improving detection algorithm specificity and offering confirmatory rapid antigen
290 tests can help minimize unnecessary quarantines and lab-based tests; and (3) once false positive notifications are minimized,
291 increasing uptake and adherence become effective strategies to scale the number of averted infections.

292

293 In theory, wearable sensor deployment reduces the burden of infection by decreasing the pool of infectious individuals (a
294 function of detection algorithm sensitivity). Here, we found that detection specificity played an unexpectedly large role as
295 well, with false positive notifications of potential infection prompting unnecessary quarantines and thereby decreasing the
296 pool of susceptible individuals. Thus, although prioritizing uptake and adherence as part of a wearable sensor deployment
297 strategy could mitigate a substantial number of infections, the unsustainable growth of associated costs should also be
298 considered. In a baseline scenario, without improvements to detection specificity, every user would spend over two days a
299 month on average incorrectly quarantining, and ~40,000 to ~65,000 additional confirmatory lab-based tests would be
300 required each day. The social and economic harm caused by solely promoting uptake or adherence without improvements
301 to detection specificity would likely undermine public confidence in and compliance with a wearable-based pandemic
302 mitigation strategy²². Alavi *et al* found that many false positives were due to the detection algorithm identifying lifestyle-
303 driven changes in resting heart rate (e.g., after intense exercise or alcohol consumption); accounting for these factors using
304 more advanced algorithms may be one way to target improved detection specificity¹⁰.

305

306 We found that the inclusion of confirmatory antigen testing was a valuable mechanism, beyond improving detection
307 specificity, to increase the "effective specificity" of the strategy and decrease the overall false positive rate. The inclusion of
308 antigen testing decreased days incorrectly spent in quarantine by ~300-fold and brought the additional demand on lab-based
309 testing infrastructure to justifiable levels. In general, antigen tests were more cost-effective and immediate tools than lab-
310 based tests to confirm a *Susceptible* device user was not infectious. However, even with the inclusion of antigen tests,
311 improvements to detection specificity still had value. Relative to scenarios with nominal detection specificity, with "high"
312 detection specificity, we observed a ~4-fold reduction in days incorrectly spent in quarantine per month per user, a ~2-fold
313 reduction in lab-based tests performed each day, and a ~5-fold reduction in antigen tests used each day. Importantly, a
314 strategy in which antigen tests support the deployment of wearable sensors is notably different from one involving frequent
315 use of rapid antigen tests for surveillance testing²³. On their own, broad antigen test-based screening approaches require
316 tremendous manufacturing volumes, infrastructure, and funding²⁴. Conversely, wearable sensors can non-invasively detect
317 infections without active user engagement, reducing the effort required to participate. Further, in the scenarios explored
318 here, detection algorithm specificity governed how efficiently rapid antigen tests were deployed.

319

320 Our work has important limitations. First, we assumed that SARS-CoV-2 epidemiology and wearable device use were
321 homogenous within the population. Our determination of the transmission rate from epidemiological data inherently results
322 in a "well-mixed" approximation for this value averaged over population-level heterogeneities such as age and super-
323 spreading. As well, the COVID-19 pandemic has disproportionately impacted low-income and minority groups, while
324 younger and wealthier individuals are more likely to own wearable devices^{25,26}. Future studies could consider a policy where
325 the incentive to download the application is increased to become a subsidy for purchasing a wearable device, reducing the
326 participation barrier. Second, we used an existing model for the incidence of infection which has its own assumptions and
327 limitations¹³. Third, we made the simplifying assumption that all users without symptoms (and that no users with symptoms)
328 could benefit from wearable-informed prompts to take a confirmatory test and self-isolate. Fourth, we did not consider how
329 uptake or adherence might vary over time or with detection accuracy^{18,22}. Fifth, we used median values for SARS-CoV-2
330 infection parameters (e.g., latent period) and did not account for reinfections or vaccinations. Finally, we did not account

331 for administrative costs or second order savings (e.g., avoided worker's compensation payouts for 14-day quarantines).

332

333 To our knowledge, this is the first study to explore the real-world impact of deploying wearable sensors for pandemic
334 mitigation. Using the example of COVID-19, we demonstrated that these devices have the potential to support FTTI systems
335 with real-time detection of presymptomatic and asymptomatic infections, and ultimately reduce the burden of infection.
336 However, in cases with insufficient detection algorithm specificity, complementary interventions that reduce false positives
337 are required to minimize social costs and resource demands. In the future, there is clear merit to further exploring how
338 wearable sensors can be incorporated into FTTI systems for pandemic mitigation, and whether these devices continue to
339 have public health utility once an endemic phase is reached, complementary to vaccines.

340

341 **STATEMENTS**

342

343 **Acknowledgements:** We would like to thank Chadi M. Saad-Roy (Princeton University) and Étienne Racine (McGill
344 University) for guidance with modeling, Andrew Soltan (Oxford University) for insightful discussions, and Arash Alavi
345 (Stanford University) for assistance with data interpretation.

346

347 **Author Contributions:** ND and GB contributed to the conceptualization; ND, RKA, GB, MW, and CEW contributed
348 to the methodology; ND and GB contributed to the writing the original draft; ND contributed to software; ND and RKA
349 contributed to visualization; ND, RKA, GB, MW, MPS, JRC, and CEW contributed to review and editing; ND, JRC, and
350 CEW contributed to supervision.

351

352 **Competing Interests:** MPS is a co-founder and member of the scientific advisory board of Personalis, Qbio, January,
353 SensOmics, Protos, Mirvie, Fodsel, and Onza. He is also on the scientific advisory board of Danaher, Genapsys and Jupiter.

354

355 **Materials and Correspondence:** Correspondence and material requests should be addressed to Nathan Duarte and
356 Caroline E. Wagner.

357

358 REFERENCES

- 359
- 360 1. Rajan, S., D. Cylus, J. & Mckee, M. What do countries need to do to implement effective ‘find, test, trace, isolate and
- 361 support’ systems? *J. R. Soc. Med.* **113**, 245–250 (2020).
- 362 2. Contreras, S. *et al.* The challenges of containing SARS-CoV-2 via test-trace-and-isolate. *Nat. Commun.* **12**, 378 (2021).
- 363 3. Grantz, K. H. *et al.* Maximizing and evaluating the impact of test-trace-isolate programs: A modeling study. *PLOS Med.*
- 364 **18**, e1003585 (2021).
- 365 4. Lewis, D. Why many countries failed at COVID contact-tracing — but some got it right. *Nature* (2020).
- 366 5. Rubin, R. The Challenges of Expanding Rapid Tests to Curb COVID-19. *JAMA* **324**, 1813 (2020).
- 367 6. Freeze, C. Supply crunch coming as demand for COVID-19 rapid testing soars. *The Globe and Mail* (2021).
- 368 7. Li, X. *et al.* Digital Health: Tracking Physiomes and Activity Using Wearable Biosensors Reveals Useful Health-Related
- 369 Information. *PLOS Biol.* **15**, e2001402 (2017).
- 370 8. Grzesiak, E. *et al.* Assessment of the Feasibility of Using Noninvasive Wearable Biometric Monitoring Sensors to Detect
- 371 Influenza and the Common Cold Before Symptom Onset. *JAMA Netw. Open* **4**, e2128534 (2021).
- 372 9. Mishra, T. *et al.* Pre-symptomatic detection of COVID-19 from smartwatch data. *Nat. Biomed. Eng.* **4**, 1208–1220
- 373 (2020).
- 374 10. Alavi, A. *et al.* Real-time alerting system for COVID-19 and other stress events using wearable data. *Nat. Med.* (2021)
- 375 doi:10.1038/s41591-021-01593-2.
- 376 11. Government of Canada. *Testing for COVID-19: How and where we test for active infections.*
- 377 [https://www.canada.ca/en/public-health/services/diseases/2019-novel-coronavirus-](https://www.canada.ca/en/public-health/services/diseases/2019-novel-coronavirus-infection/symptoms/testing/diagnosing.html)
- 378 [infection/symptoms/testing/diagnosing.html](https://www.canada.ca/en/public-health/services/diseases/2019-novel-coronavirus-infection/symptoms/testing/diagnosing.html) (2021).
- 379 12. Lumley, S. F. *et al.* Antibody Status and Incidence of SARS-CoV-2 Infection in Health Care Workers. *N. Engl. J. Med.*
- 380 **384**, 533–540 (2021).
- 381 13. Institute for Health Metrics and Evaluation (IHME). *COVID-19 Projections.*
- 382 <https://covid19.healthdata.org/projections> (2020).

- 383 14. Bobrovitz, N. *et al.* Global seroprevalence of SARS-CoV-2 antibodies: A systematic review and meta-analysis. *PLOS*
384 *ONE* **16**, e0252617 (2021).
- 385 15. Cleary, J. L., Fang, Y., Sen, S. & Wu, Z. *A Caveat to Using Wearable Sensor Data for COVID-19 Detection: The Role of*
386 *Behavioral Change after Receipt of Test Results*. <http://medrxiv.org/lookup/doi/10.1101/2021.04.17.21255513> (2021)
387 doi:10.1101/2021.04.17.21255513.
- 388 16. Husereau, D. *et al.* Consolidated Health Economic Evaluation Reporting Standards (CHEERS) statement. *BMJ* **346**,
389 f1049–f1049 (2013).
- 390 17. Government of Canada. *COVID-19 daily epidemiology update*. [https://health-infobase.canada.ca/covid-](https://health-infobase.canada.ca/covid-19/epidemiological-summary-covid-19-cases.html)
391 [19/epidemiological-summary-covid-19-cases.html](https://health-infobase.canada.ca/covid-19/epidemiological-summary-covid-19-cases.html).
- 392 18. Munzert, S., Selb, P., Gohdes, A., Stoetzer, L. F. & Lowe, W. Tracking and promoting the usage of a COVID-19 contact
393 tracing app. *Nat. Hum. Behav.* **5**, 247–255 (2021).
- 394 19. Vavreck, L. \$100 as Incentive to Get a Shot? Experiment Suggests It Can Pay Off. *The New York Times* (2021).
- 395 20. Bodas, M. & Peleg, K. Income assurances are a crucial factor in determining public compliance with self-isolation
396 regulations during the COVID-19 outbreak – cohort study in Israel. *Isr. J. Health Policy Res.* **9**, 54 (2020).
- 397 21. Abbot. *In vitro diagnostic rapid test for qualitative detection of SARS-CoV-2 antigen (Ag)*.
398 <https://www.globalpointofcare.abbott/en/product-details/panbio-covid-19-ag-antigen-test.html>.
- 399 22. Kaptchuk, G., Goldstein, D. G., Hargittai, E., Hofman, J. & Redmiles, E. M. How good is good enough for COVID19
400 apps? The influence of benefits, accuracy, and privacy on willingness to adopt. *ArXiv200504343 C*: (2020).
- 401 23. Larremore, D. B. *et al.* Test sensitivity is secondary to frequency and turnaround time for COVID-19 screening. *Sci.*
402 *Adv.* **7**, eabd5393 (2021).
- 403 24. Iacobucci, G. Covid-19: Government rolls out twice weekly rapid testing to all in England. *BMJ* n902 (2021)
404 doi:10.1136/bmj.n902.
- 405 25. Liao, T. F. & De Maio, F. Association of Social and Economic Inequality With Coronavirus Disease 2019 Incidence
406 and Mortality Across US Counties. *JAMA Netw. Open* **4**, e2034578 (2021).
- 407 26. Vogels, E. About one-in-five Americans use a smart watch or fitness tracker. *Pew Research Centre*.

Supplementary Appendix

1. Modeling assumptions, variables, and equations

Supplementary Table 1: SARS-CoV-2 characteristics. We obtained the presymptomatic infectious period by subtracting the latent period (3.69 days) from the incubation period (5 days)^{1,2}. We obtained the asymptomatic and symptomatic infectious period by subtracting the presymptomatic infectious period (1.31 days) from the total infectious period (7 days)¹⁻³. During Monte Carlo simulations, we modeled asymptomatic prevalence as a beta random variable with a mean of 0.4 and a sample size of 200; a sample size of 200 is greater than 75% of the study populations examined by Oran and colleagues⁴.

Parameter	Symbol	Value
Latent period (exposure to infectiousness)	$1 / \alpha$	3.69 days ¹
Presymptomatic infectious period	$1 / \tau$	1.31 days ^{1,2}
Asymptomatic and symptomatic infectious period	$1 / \gamma$	5.69 days ¹⁻³
Asymptomatic prevalence	ρ	40% ⁴
Transmission potential without symptoms relative to with symptoms	λ	55% ¹
Daily new infections	π	varies
Average number of transmissions per infectious person per day	β	varies

Supplementary Table 2: Wearable device and policy parameters.

Parameter	Symbol	Nominal Value	Notes
Wearable device uptake	θ	4%	We defined uptake as the percent of the population that owns a wearable device, has downloaded the detection/notification application, <i>and</i> uses the device enough to collect sufficient data for detection. We estimated uptake would range from 0.5% to 7.5% at baseline. Supplementary Tables 3 and 4 provide an example of this calculation. <u>Device ownership:</u> Estimates from 2018 place device ownership in Canada between 22% and 25% ^{5,6} . <u>Download rate:</u> A study found that the baseline download rate of Germany's national contact tracing application was between ~8% and ~11%; incentives could increase this rate ⁷ . Paré and colleagues found that 57% of owners regularly track their health with their device ⁵ . Here, we looked at download rates ranging from 10% to 60%. <u>Utilization:</u> In research studies where wearable devices were used to track health, usage rates ranged from as low as 24%, to 50% in the long run ^{8,9} .
Adherence to wearable device notification	ψ	50%	We defined adherence as the proportion of wearable device users that comply with recommended next steps upon notification of potential infection. At baseline, next steps include seeking a confirmatory lab-based test, self-isolating while awaiting a result, and quarantining until recovery if the result is positive. With antigen tests, compliant users also take a confirmatory rapid antigen test prior to seeking a lab-based test. In Israel, at least ~53% of antigen test kit results were reported (~613,000 reports out of ~1,150,000 kits taken home) ^{10,11} . In Norway, up to 70% of those with a suspected diagnosis and up to 86% with a positive diagnostic test adhered to quarantine ¹² . However, adherence could be as low as ~14%, if one considers Canada's COVID Alert contact tracing app's reporting rate in light of confirmed cases as of July 27, 2021 ¹³ . During Monte Carlo simulations, we modeled adherence as a beta random variable with a mean of 0.5 and a sample size of 1723; 1723 was the sample size for the relevant experiment in the Norway study.
Detection algorithm sensitivity	σ_w	80%	We defined sensitivity as the proportion of infected yet asymptomatic wearable device users (i.e., <i>Exposed</i> , <i>Presymptomatic</i> , and <i>Asymptomatic</i>) who receive a notification of potential infection prior to recovering and entering the <i>Removed</i> compartment. Alavi and colleagues' NightSignal algorithm achieved a sensitivity of ~80%, which is a plausible value based on other efforts to develop similar algorithms ^{14,15} . During Monte Carlo simulations, we modeled sensitivity as a beta random variable with a mean of 0.80 and a sample size of 84; 84 was the size of the sample used to calculate the NightSignal algorithm's sensitivity.
Detection algorithm specificity	v_w	92%	We defined specificity as the probability that, on a given day, a healthy (i.e., <i>Susceptible</i>) user does not receive a notification of potential infection. Alavi and colleagues' NightSignal algorithm gave potentially healthy users 0.0819 false positive notifications ("red alerts") per day on average, corresponding to a specificity of ~92% ¹⁴ . During Monte Carlo simulations, we modeled specificity as a beta random variable with a mean of 0.92 and a sample size of 818; alarm data from 818 potentially healthy users in Alavi and colleagues' dataset were used to calculate the false positive rate.

Detection algorithm sensitivity adjustment factor	κ	$(1/\alpha + 1/\tau + 1/\lambda)^{-1}$ days ⁻¹	We assumed that σ_w is applied uniformly across <i>Exposed</i> , <i>Presymptomatic</i> , and <i>Asymptomatic</i> states such that by the time infectiousness ends, σ_w of infected users without symptoms are notified.
Detection algorithm specificity adjustment factor	χ	$(1)^{-1}$ days ⁻¹	We assumed that ν_w is applied over a period of one day such that on any given day, <i>Susceptible</i> users receive an incorrect (i.e., false positive) notification of potential infection with probability $(1-\nu_w)$.
Rapid antigen test sensitivity	σ_a	91.1%	We used the lowest performance reported for Abbot's Panbio test ¹⁶ . Independent evaluations of this test suggest lower sensitivity in presymptomatic and asymptomatic individuals ^{17,18} . However, we reasoned that the receipt of a wearable-informed notification of potential infection raised the pretest probability of infection, thereby improving the negative predictive value (NPV) of the tests ¹⁹ . We performed a sensitivity analysis on the sensitivity of rapid antigen tests (Supplementary Figure 5).
Rapid antigen test specificity	ν_a	99.7%	We used the lowest performance reported for Abbot's Panbio test ¹⁶ . Independent evaluations suggest that this test's specificity is even higher ^{17,18} .
Lab-based test turnaround time	ϵ	2 days	In general, 1-3 days based on Health Canada reporting ²⁰ .
Transmission rate increase factor	a	1	Used to test the scenario in which device users who do not receive a notification of potential infection act in a riskier fashion, effectively increasing their transmission rate ²¹ .

Model equations, in addition to Equation (1), used to extract transmission rate (β) from the IHME infection model:

$$\frac{dS}{dt} = -\pi \quad (3)$$

$$\frac{dE}{dt} = \pi - \alpha E \quad (4)$$

$$\frac{dI_p}{dt} = \alpha E - \tau I_p \quad (5)$$

$$\frac{dI_a}{dt} = \rho \tau I_p - \gamma I_a \quad (6)$$

$$\frac{dI_s}{dt} = (1 - \rho) \tau I_p - \gamma I_s \quad (7)$$

$$\frac{dR}{dt} = \gamma I_a + \gamma I_s \quad (8)$$

Model equations, in addition to Equation (2), used to run simulations:

$$\frac{dS_w}{dt} = -\theta \pi - \psi \chi (1 - \nu_w) (1 - \nu_a) S_w + \frac{Q_i}{\epsilon} \quad (9)$$

$$\frac{dE_w}{dt} = \theta\pi - \psi\kappa\sigma_w\sigma_a E_w - \alpha E_w \quad (10)$$

$$\frac{dI_{p,w}}{dt} = \alpha E_w - \psi\kappa\sigma_w\sigma_a I_{p,w} - \tau I_{p,w} \quad (11)$$

$$\frac{dI_{a,w}}{dt} = \rho\tau I_{p,w} - \psi\kappa\sigma_w\sigma_a I_{a,w} - \gamma I_{a,w} \quad (12)$$

$$\frac{dI_{s,w}}{dt} = (1 - \rho)\tau I_{p,w} - \gamma I_{s,w} \quad (13)$$

$$\frac{dS_{nw}}{dt} = -(1 - \theta)\pi \quad (14)$$

$$\frac{dE_{nw}}{dt} = (1 - \theta)\pi - \alpha E_{nw} \quad (15)$$

$$\frac{dI_{p,nw}}{dt} = \alpha E_{nw} - \tau I_{p,nw} \quad (16)$$

$$\frac{dI_{a,nw}}{dt} = \rho\tau I_{p,nw} - \gamma I_{a,nw} \quad (17)$$

$$\frac{dI_{s,nw}}{dt} = (1 - \rho)\tau I_{p,nw} - \gamma I_{s,nw} \quad (18)$$

$$\frac{dR}{dt} = \gamma(I_{a,w} + I_{s,w} + I_{a,nw} + I_{s,nw}) + \frac{Q_c}{\epsilon} \quad (19)$$

$$\frac{dQ_i}{dt} = \psi\chi(1 - \nu_w)(1 - \nu_a)S_w - \frac{Q_i}{\epsilon} \quad (20)$$

$$\frac{dQ_c}{dt} = \psi\kappa\sigma_w\sigma_a(E_w + I_{p,w} + I_{a,w}) - \frac{Q_c}{\epsilon} \quad (21)$$

2. Estimating ranges for uptake

Below, Supplementary Tables 3 and 4 delineate how we estimated plausible ranges for uptake in a baseline scenario. First, we multiplied the download rate by the proportion of the population that owns a device to obtain a plausible range for the proportion of the population that owns the application (Supplementary Table 3). Then, we calculated a range for uptake by multiplying the proportion of individuals that own the application by expected levels of utilization (Supplementary Table 4). Accounting for utilization was a necessary step because not all individuals who download the application to their device use it enough to provide sufficient data for the algorithm to function correctly¹⁴. We concluded that in a baseline scenario, uptake would likely range from 0.5% to 7.5%. Assumptions around parameter values are listed in Supplementary Table 2 above.

Supplementary Table 3: Calculation of the proportion of individuals who own the application.

Application Ownership	<i>Device Ownership</i>		
<i>Download Rate</i>	<i>22.0%</i>	<i>23.5%</i>	<i>25.0%</i>
<i>10.0%</i>	<i>2.2%</i>	<i>2.4%</i>	<i>2.5%</i>
<i>35.0%</i>	<i>7.7%</i>	<i>8.2%</i>	<i>8.8%</i>
<i>60.0%</i>	<i>13.2%</i>	<i>14.1%</i>	<i>15.0%</i>

Supplementary Table 4: Calculation of the proportion of individuals who own and use the application.

Uptake	<i>Utilization</i>		
<i>Application Ownership</i>	<i>24.0%</i>	<i>37.0%</i>	<i>50.0%</i>
<i>2.2%</i>	<i>0.5%</i>	<i>0.8%</i>	<i>1.1%</i>
<i>8.6%</i>	<i>2.1%</i>	<i>3.2%</i>	<i>4.3%</i>
<i>15.0%</i>	<i>3.6%</i>	<i>5.6%</i>	<i>7.5%</i>

3. Estimating economic impact

To generate a first-order estimate of net healthcare expenditures in particular scenarios, we subtracted savings from expenditures. Savings included costs avoided from averting hospitalizations. Expenditures included the costs of lab-based tests and antigen tests, where applicable. We calculated the number of averted hospitalizations and tests from our simulations using Equations (22) to (24) below. We multiplied these volumes by the costs in Supplementary Table 5, as in Equation (25), to generate a first-order approximation of net healthcare expenditures.

$$n_{averted\ hosp} = Pr\{hospitalization|infection\}n_{averted\ inf} \quad (22)$$

$$n_{lab\ tests} = \psi \sum_t \left[\chi(1 - \nu_w)(1 - \nu_a)S_w + \kappa\sigma_w\sigma_a(E_w + I_{p,w} + I_{a,w}) \right] \quad (23)$$

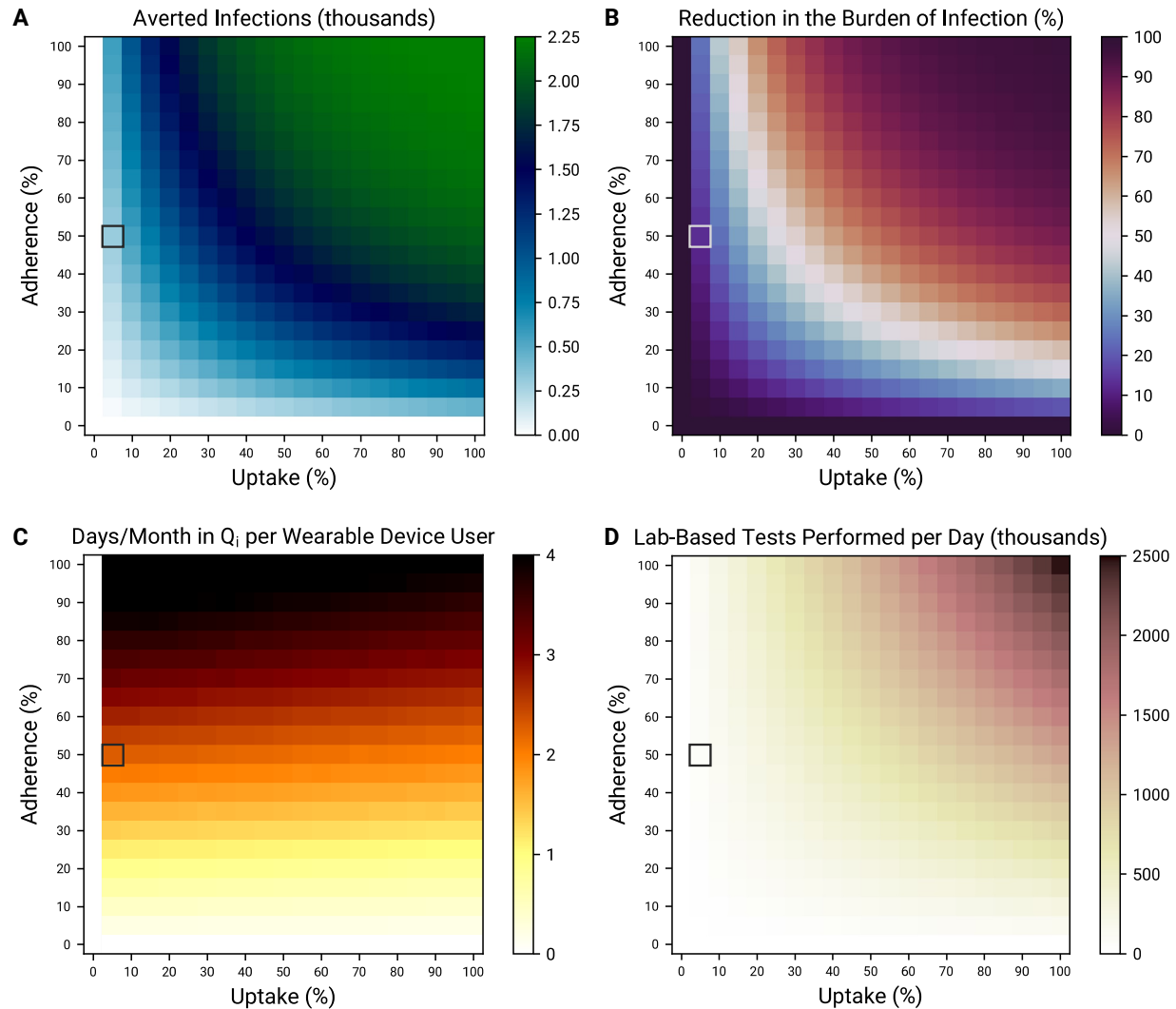
$$n_{rapid\ tests} = \psi \sum_t \left[\chi(1 - \nu_w)S_w + \kappa\sigma_w(E_w + I_{p,w} + I_{a,w}) \right] \quad (24)$$

$$net\ expenditures = 100 n_{lab\ tests} + 5 n_{rapid\ tests} - 23,471 n_{averted\ hosp} \quad (25)$$

Supplementary Table 5: Costs used in economic impact calculations and associated assumptions.

Parameter	Value	Notes
Average cost of a COVID-19 hospitalization	\$23,471	Average cost between January 2020 and March 2021; includes normal visits and ICU visits ²² . Data downloaded on December 16, 2021.
Infection hospitalization ratio	1.31%	We calculated the infection hospitalization ratio by dividing the total number of COVID-19 hospitalizations by the total number of infections, all within the simulation period ²³ . We offset the hospitalization counts by 7 days to align them with infections.
Cost of an antigen test	\$5	Based on rates achieved when tests are purchased at scale ²⁴ .
Cost of a diagnostic test	\$100	Large variation in this figure; used rule of thumb ²⁵ .

4. Additional results



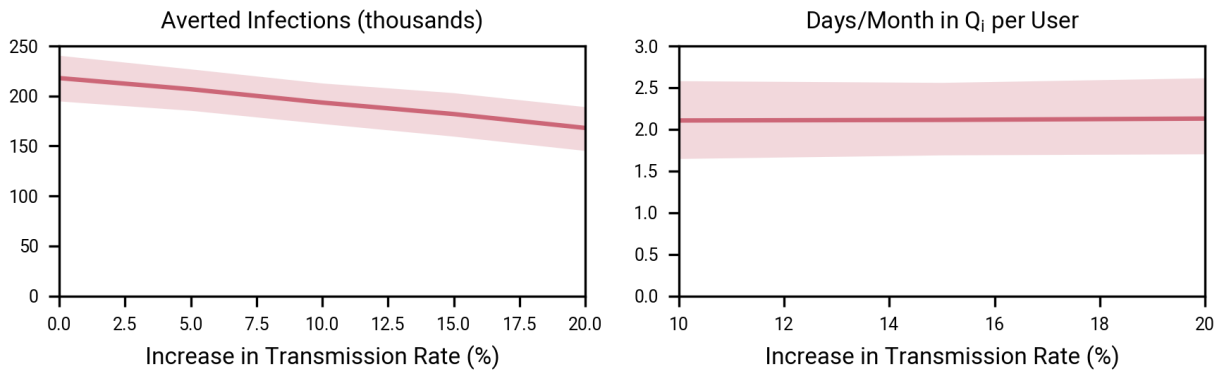
Supplementary Figure 1: Impact of simultaneously increasing uptake and adherence. Averted infections (A), reduction in the burden of infection (B), days incorrectly spent in quarantine per month per device user (C), and average daily demand for lab-based tests (D), all over the entire simulation period, as a function of uptake and adherence. Grey boxes denote nominal sensitivity (80%) and specificity (92%).

Supplementary Table 6: Wearable sensor deployment scenarios under different technology assumptions. 95% confidence intervals are listed in parentheses. This table serves as a counterpart to Table 2 so that analogous scenarios with and without confirmatory antigen tests can be compared.

Uptake (%)	Adherence (%)	Averted Infections (thousands)	Reduction in Burden of Infection (%)	Days/Month in Q _i per User	Additional Lab-Based Tests Performed per Day (thousands)	Net Savings (\$ million)
<i>Nominal Detection Sensitivity (80%) and Specificity (92%) Scenario</i>						
0.5	14	8.8 (7.5–10.1)	0.4 (0.3–0.4)	0.62 (0.47–0.78)	1.9 (1.4 – 2.4)	-30.0 (-38.2– -22.5)
0.5	50	28.5 (25.7–31.4)	1.2 (1.1–1.3)	2.13 (1.68–2.63)	6.4 (5.1 – 8.0)	-102.8 (-128.8– -79.9)
0.5	86	44.7 (40.6–48.6)	1.9 (1.7–2.1)	3.46 (2.76–4.18)	10.5 (8.4 – 12.7)	-167.8 (-204.5– -132.2)
4.0	14	69.9 (60.0–80.7)	3.0 (2.6–3.4)	0.62 (0.48–0.80)	15.2 (11.8 – 19.4)	-240.7 (-311.3– -183.5)
4.0	50	218.9 (197.1–241.0)	9.3 (8.4–10.3)	2.13 (1.69–2.64)	51.6 (40.9 – 64.1)	-825.7 (-1,035.7– -645.2)
4.0	86	335.5 (306.7–363.2)	14.3 (13.1–15.5)	3.46 (2.79–4.16)	84.0 (67.7 – 100.9)	-1,349.6 (-1,637.9– -1,073.9)
7.5	14	129.1 (110.3–148.0)	5.5 (4.7–6.3)	0.62 (0.48–0.79)	28.4 (22.0 – 36.0)	-452.3 (-580.5– -343.8)
7.5	50	394.1 (358.8–428.2)	16.8 (15.3–18.3)	2.13 (1.69–2.60)	96.9 (77.0 – 118.2)	-1,555.8 (-1,918.6– -1,215.5)
7.5	86	589.9 (543.3–633.0)	25.2 (23.2–27.0)	3.47 (2.79–4.20)	157.8 (126.8 – 191.1)	-2,548.3 (-3,111.5– -2,021.9)
<i>High Detection Sensitivity (96.0%) and Specificity (98.4%) Scenario</i>						
0.5	14	8.1 (7.0–9.2)	0.3 (0.3–0.4)	0.13 (0.07–0.21)	0.4 (0.2 – 0.6)	-4.4 (-8.4– -1.3)
0.5	50	25.1 (23.4–26.9)	1.1 (1.0–1.1)	0.45 (0.24–0.69)	1.4 (0.7 – 2.1)	-16.0 (-28.7– -5.4)
0.5	86	38.5 (36.3–40.9)	1.6 (1.5–1.7)	0.76 (0.40–1.24)	2.3 (1.2 – 3.8)	-28.5 (-53.1– -10.0)
4.0	14	63.4 (55.6–71.1)	2.7 (2.4–3.0)	0.13 (0.07–0.21)	3.1 (1.7 – 5.0)	-33.9 (-66.6– -10.7)
4.0	50	194.1 (180.8–207.5)	8.3 (7.7–8.9)	0.44 (0.24–0.71)	10.8 (5.9 – 17.4)	-127.5 (-237.4– -45.6)
4.0	86	292.2 (275.4–309.1)	12.5 (11.8–13.2)	0.77 (0.41–1.21)	18.7 (10.2 – 29.6)	-233.8 (-419.1– -90.3)
7.5	14	117.7 (103.6–133.6)	5.0 (4.4–5.7)	0.13 (0.07–0.20)	5.8 (3.1 – 9.2)	-64.2 (-122.7– -18.3)
7.5	50	352.2 (328.2–378.0)	15.0 (14.0–16.1)	0.45 (0.24–0.72)	20.5 (11.3 – 32.7)	-246.8 (-449.3– -88.9)
7.5	86	520.4 (493.7–549.2)	22.2 (21.1–23.4)	0.77 (0.43–1.22)	35.4 (20.0 – 55.7)	-452.2 (-796.5– -190.4)

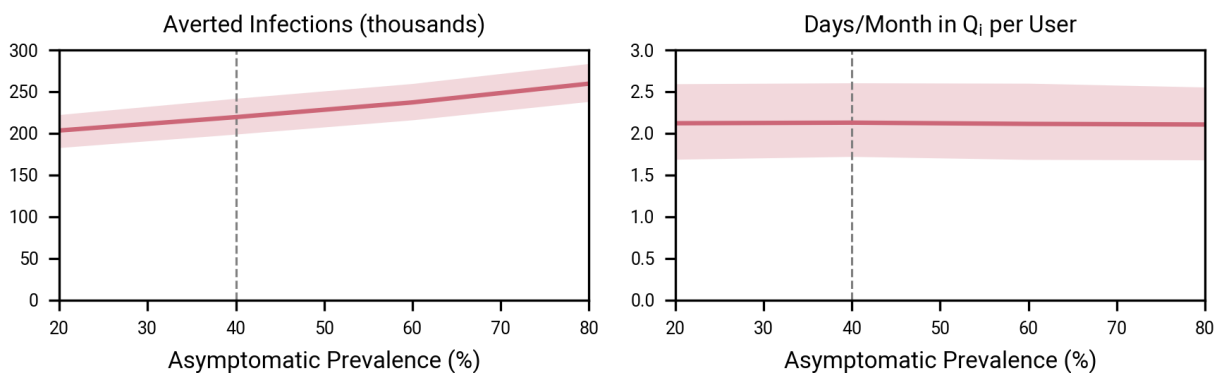
5. Sensitivity analyses

First, we looked at whether, instead of remaining constant, the transmission rate of device users who do not receive a notification of potential infection might in fact increase due to a sense of false confidence (Supplementary Figure 2)²¹. We modulated a in Equation (2) to do so; a 5% increase in the transmission rate, for example, meant a was set to 1.05. Increase in transmission among device users relative to historical levels reduced the number of averted infections. The number of incorrect quarantines was not impacted. The implication of this finding is that public health leaders would need to communicate the limitations of wearable sensors with respect to detecting infections and emphasize that a lack of a notification does not rule out potential infection.



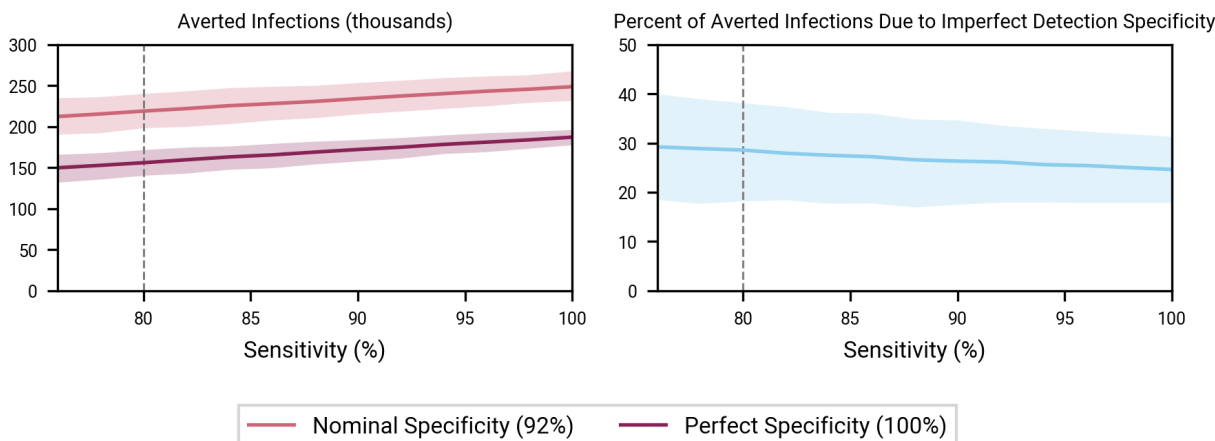
Supplementary Figure 2: Impact of increased transmission among device users who are not notified of potential infection in a baseline scenario. We assumed 4% uptake, 50% adherence, and that transmission among non-users was unchanged.

Second, we looked at the impact of asymptomatic prevalence (Supplementary Figure 3). It was important to perform this analysis because our model only accounts for notifications sent to presymptomatic and asymptomatic individuals, yet there is still a lack of consensus on a specific value for the asymptomatic prevalence⁴. As expected, with greater asymptomatic prevalence, more individuals could benefit from wearable device use and more infections could be averted. The success of this strategy was not dependent on a particular value of asymptomatic prevalence. The number of incorrect quarantines was not impacted.



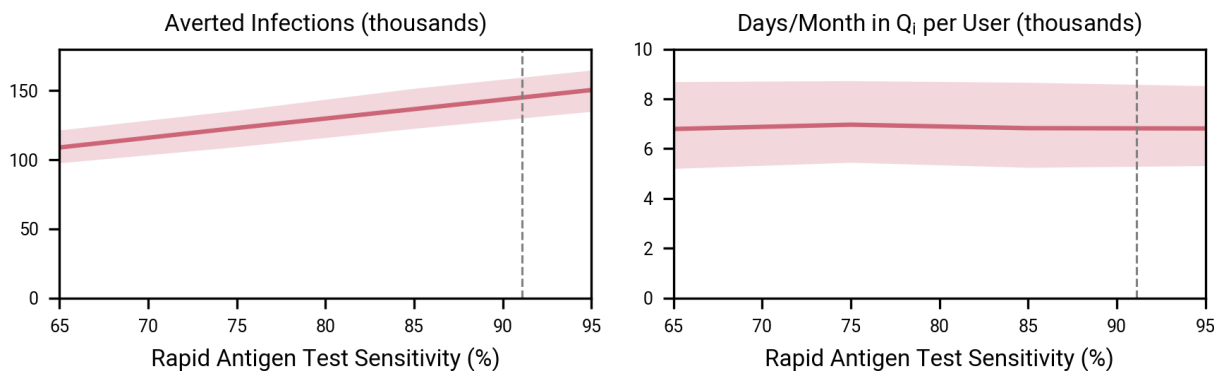
Supplementary Figure 3: Impact of asymptomatic prevalence in a baseline scenario. We assumed 4% uptake and 50% adherence. We continued to model asymptomatic prevalence as a beta-distributed random variable (Supplementary Table 1). The dashed grey line represents nominal asymptomatic prevalence (40%).

Third, we investigated how the decrease in the number of *Susceptible* individuals resulting from incorrect quarantines influenced the number of averted infections in a baseline scenario (Supplementary Figure 4). We compared the number of averted infections with nominal (92%) and perfect (100%) detection specificity as detection sensitivity increased. In a baseline scenario, a meaningful proportion – 28.6% (95% CI: 18.3–38.2%) in the case of nominal detection sensitivity – of averted infections were driven by incorrect quarantines. This proportion decreased with increasing sensitivity. Consistent with earlier findings, it remains important to minimize unnecessary quarantines – social costs can be substantially reduced while still averting a meaningful number of infections, especially if detection sensitivity can be improved in parallel.



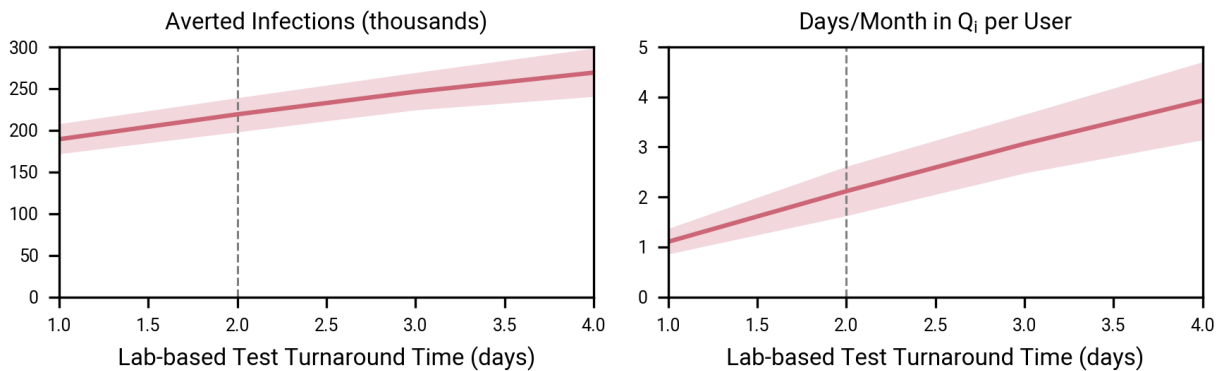
Supplementary Figure 4: Impact of incorrect quarantines on averted infections in a baseline scenario. We assumed 4% uptake and 50% adherence. The dashed grey line depicts nominal detection algorithm sensitivity (80%).

Fourth, we investigated the impact of lower rapid antigen test sensitivity (Supplementary Figure 5). First, fewer infections were averted overall – as discussed, using antigen tests to minimize incorrect quarantines increased the pool of susceptible individuals. Second, averted infections grew linearly with test sensitivity: a ~10% increase in test sensitivity resulted in a ~14,000 increase in averted infections. These two effects result in a tradeoff between missing more infectious individuals (imperfect antigen test sensitivity) and decreasing false positive prompts to seek a lab-based test and self-isolate while awaiting the results (near perfect antigen test specificity). We believe the use of antigen tests as a complementary mechanism could be justified. Although fewer infections are averted relative to wearable sensor deployment without antigen tests, hundreds of thousands of infections are still averted relative to the counterfactual scenario – and in a resource-efficient and socially acceptable fashion. Certainly, infected individuals with a false negative antigen test might act in a riskier fashion – even still, there remains an opportunity to avert a substantial number of infections (Supplementary Figure 2). We also point out that improving detecting algorithm sensitivity could help counteract the effect of imperfect antigen test sensitivity (Table 2).



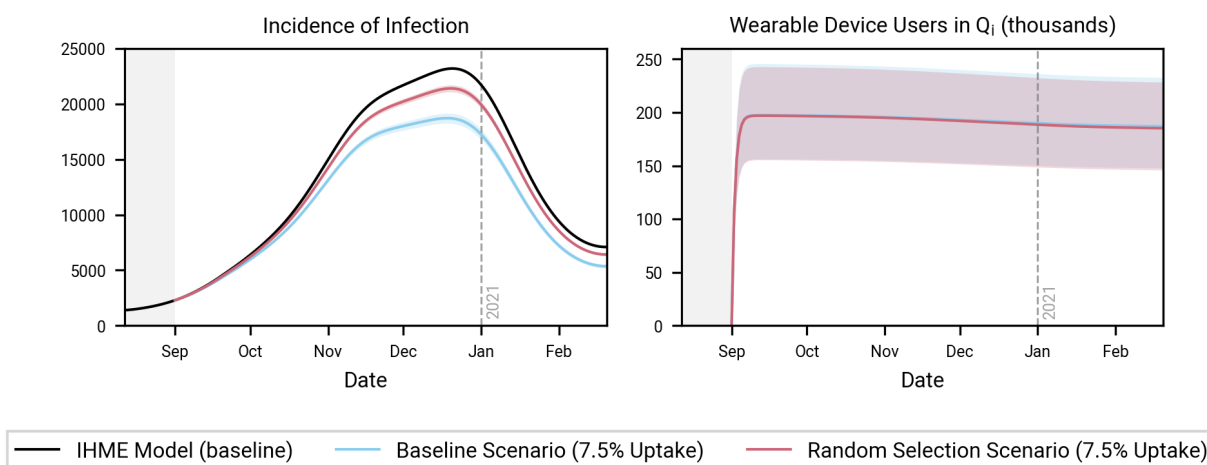
Supplementary Figure 5: Impact of antigen test sensitivity. We assumed 4% uptake and 50% adherence. The dashed grey line represents nominal antigen test sensitivity (91.7%).

Fifth, we explored the impact of lab-based test turnaround time to determine whether minimizing this variable should be a policy priority (Supplementary Figure 6). Throughout this study, we set turnaround time to its nominal value of two days. With longer turnaround times, individuals incorrectly in quarantine would remain there longer, further decreasing the pool of *Susceptible* individuals. As expected, more infections are consequently averted. However, there are other mechanisms (e.g., improving detection sensitivity) for increasing averted infections that are not accompanied by as large of an increase to social costs. Thus, as is already the case outside the context of wearable sensor deployment, it would make sense to minimize turnaround time.



Supplementary Figure 6: Impact of lab-based test turnaround time. We assumed 4% uptake and 50% adherence.

Finally, to understand the impact of detection algorithm sensitivity on the incidence of infection, we investigated the scenario in which device users are randomly asked to seek a lab-based test and self-isolate while awaiting the result (Supplementary Figure 7). We set the likelihood of being asked to quarantine to the false positive rate, still treating detection specificity as a beta-distributed random variable and setting it to its nominal value. As expected, the reduction in detection sensitivity substantially reduces the number of averted infections. The number of individuals incorrectly in quarantine is unimpacted because it is governed by detection specificity, not sensitivity.



Supplementary Figure 7: Impact of randomly asking device users to seek a lab-based test and quarantine while waiting for the result. We assumed 7.5% uptake, still with 50% adherence, to illustrate the relative difference in the incidence of infection.

6. References

1. Li, R. *et al.* Substantial undocumented infection facilitates the rapid dissemination of novel coronavirus (SARS-CoV-2). *Science* **368**, 489–493 (2020).
2. Lauer, S. A. *et al.* The Incubation Period of Coronavirus Disease 2019 (COVID-19) From Publicly Reported Confirmed Cases: Estimation and Application. *Ann. Intern. Med.* **172**, 577–582 (2020).
3. Zhou, R. *et al.* Viral dynamics in asymptomatic patients with COVID-19. *Int. J. Infect. Dis.* **96**, 288–290 (2020).
4. Oran, D. P. & Topol, E. J. Prevalence of Asymptomatic SARS-CoV-2 Infection: A Narrative Review. *Ann. Intern. Med.* **173**, 362–367 (2020).
5. Paré, G., Leaver, C. & Bourget, C. Diffusion of the Digital Health Self-Tracking Movement in Canada: Results of a National Survey. *J. Med. Internet Res.* **20**, e177 (2018).
6. Sujay Vailshery, L. *Activity fitness tracker household penetration rate in Canada in 2018, by province.* <https://www.statista.com/statistics/1036752/canada-activity-fitness-tracker-ownership-rate-by-province/> (2021).
7. Munzert, S., Selb, P., Gohdes, A., Stoetzer, L. F. & Lowe, W. Tracking and promoting the usage of a COVID-19 contact tracing app. *Nat. Hum. Behav.* **5**, 247–255 (2021).
8. Silva de Lima, A. L. *et al.* Feasibility of large-scale deployment of multiple wearable sensors in Parkinson's disease. *PLOS ONE* **12**, e0189161 (2017).
9. Radin, J. M., Wineinger, N. E., Topol, E. J. & Steinhubl, S. R. Harnessing wearable device data to improve state-level real-time surveillance of influenza-like illness in the USA: a population-based study. *Lancet Digit. Health* **2**, e85–e93 (2020).
10. Trabelsi Haddad, T. Returning to school, again: 'Operation Antigen 2' is underway, and only negatives will be admitted to institutions. *ynet* (2021).
11. Trabelsi Haddad, T. 613,000 reported, about 550 positive: Antigen results - and those that will arrive tomorrow without testing. *ynet* (2021).
12. Carlsen, E. Ø., Caspersen, I. H., Trogstad, L., Gjessing, H. K. & Magnus, P. *Public adherence to governmental recommendations regarding quarantine and testing for COVID-19 in two Norwegian cohorts.* <http://medrxiv.org/lookup/doi/10.1101/2020.12.18.20248405> (2020) doi:10.1101/2020.12.18.20248405.
13. Government of Canada. *How many people are using COVID Alert.* <https://www.canada.ca/en/public-health/services/diseases/coronavirus-disease-covid-19/covid-alert.html#a6>.

14. Alavi, A. *et al.* Real-time alerting system for COVID-19 and other stress events using wearable data. *Nat. Med.* (2021) doi:10.1038/s41591-021-01593-2.
15. Gadaleta, M. *et al.* Passive detection of COVID-19 with wearable sensors and explainable machine learning algorithms. *Npj Digit. Med.* **4**, 166 (2021).
16. Abbot. *In vitro diagnostic rapid test for qualitative detection of SARS-CoV-2 antigen (Ag)*. <https://www.globalpointofcare.abbott/en/product-details/panbio-covid-19-ag-antigen-test.html>.
17. Torres, I., Poujois, S., Albert, E., Colomina, J. & Navarro, D. Evaluation of a rapid antigen test (Panbio™ COVID-19 Ag rapid test device) for SARS-CoV-2 detection in asymptomatic close contacts of COVID-19 patients. *Clin. Microbiol. Infect.* **27**, 636.e1-636.e4 (2021).
18. Winkel, B. *et al.* Screening for SARS-CoV-2 infection in asymptomatic individuals using the Panbio COVID-19 antigen rapid test (Abbott) compared with RT-PCR: a prospective cohort study. *BMJ Open* **11**, e048206 (2021).
19. Woloshin, S., Patel, N. & Kesselheim, A. S. False Negative Tests for SARS-CoV-2 Infection — Challenges and Implications. *N. Engl. J. Med.* **383**, e38 (2020).
20. Government of Canada. *Testing for COVID-19: How and where we test for active infections*. <https://www.canada.ca/en/public-health/services/diseases/2019-novel-coronavirus-infection/symptoms/testing/diagnosing.html> (2021).
21. Cleary, J. L., Fang, Y., Sen, S. & Wu, Z. *A Caveat to Using Wearable Sensor Data for COVID-19 Detection: The Role of Behavioral Change after Receipt of Test Results*. <http://medrxiv.org/lookup/doi/10.1101/2021.04.17.21255513> (2021) doi:10.1101/2021.04.17.21255513.
22. Canadian Institute for Health Information. *COVID-19 Hospitalization and Emergency Department Statistics, 2021–2022*. (2021).
23. Institute for Health Metrics and Evaluation (IHME). *COVID-19 Projections*. <https://covid19.healthdata.org/projections> (2020).
24. World Health Organization. Global partnership to make available 120 million affordable, quality COVID-19 rapid tests for low- and middle-income countries. (2020).
25. Kliff, S. Most Coronavirus Tests Cost About \$100. Why Did One Cost \$2,315? *The New York Times* (2020).