

1 **Use of digital technology tools to characterize patient**
2 **adherence to prescription-grade omega-3**
3 **polyunsaturated fatty acid therapy: Primary results of**
4 **the DIAPAsOn prospective observational study**

5
6 Gregory P. Arutyunov MD, PhD,^{1*} Alexander G. Arutyunov MD, PhD,² Fail
7 T. Ageev MD PhD,³ Tatiana V. Fofanova MD, PhD⁴

8
9 ¹Department of Internal Medicine, Pirogov Russian National Research Medical University,
10 Moscow. e-mail: arut@ossn.ru

11
12 ORCID: 0000-0002-6645-2515

13
14
15 ²Department of Internal Medicine, Pirogov Russian National Research Medical University,
16 Moscow. email: agarutyunov@mail.ru

17
18 ORCID: 0000-0003-1180-3549

19
20
21 ³Department of Outpatient Medical and Diagnostic Technologies, Myasnikov Institute of
22 Clinical Cardiology, National Medical Research Center for Cardiology, Moscow. email:
23 ftageev@gmail.com

24
25 ORCID: 0000-0003-4369-1393

26
27 ⁴Department of Outpatient Medical and Diagnostic Technologies, Myasnikov Institute of
28 Clinical Cardiology, National Medical Research Center for Cardiology, Moscow. email:
29 t.fofanova@yandex.ru

30
31 ORCID: 0000-0002-3321-2902

32 **Author for correspondence*

33
34 **Keywords:** Omega-3-acid ethyl esters; myocardial infarction; hypertriglyceridemia,
35 adherence; compliance; persistence; mhealth; ehealth; patient-reported outcomes

36
NOTE: This preprint reports new research that has not been certified by peer review and should not be used to guide clinical practice.

37 **Abstract**

38 **Background, objectives and methods:** DIAPAsOn was a 6-month prospective
39 observational multicenter study in the Russian Federation that examined adherence to
40 a preparation of highly purified omega-3 polyunsaturated fatty acids (OMACOR) in
41 adult patients with a history of recent myocardial infarction or endogenous
42 hypertriglyceridemia. A full description of the study's aims and methods has appeared
43 in *JMIR Res Protoc*. A feature of DIAPAsOn was the use of a bespoke electronic
44 patient engagement and data collection system.

45 **Results:** The net average reduction from baseline in both total and low-density
46 lipoprotein cholesterol was approximately 1 mmol/L and the net average increment in
47 high-density lipoprotein cholesterol was 0.2 ± 0.53 mmol/L. Mean triglyceride levels
48 declined by ~ 1.3 mmol/, from an initial level of 2.99 ± 1.29 mmol/L to 1.67 ± 0.67
49 mmol/L. The percentage of patients with triglyceride < 1.7 mmol/L rose from 13.1% at
50 baseline to 54% at study-end.

51
52 Digital reporting of adherence was registered by 8.3% of patients (n=180) and average
53 scores indicted poor adherence. However, clinic-based enquiry suggested high levels
54 of adherence.

55
56 Data on health-related quality of life accrued from digitally-engaged patients identified
57 improvements among patients reporting high adherence to study treatment, but
58 patient numbers were small.

59
60 **Conclusions:** The lipid and lipoprotein findings indicate that OMACOR had nominally
61 favorable effects on the blood lipid profile. Less than 10% of patients enrolled in
62 DIAPAsOn used the bespoke digital platform piloted in the study and the level of self-
63 reported adherence to medication by those patients was also low. Reasons for this low
64 uptake and adherence are unclear. Better adherence was recorded by clinical report.

65

66 Introduction

67 Non-high-density lipoprotein cholesterol blood lipids are a source of residual
68 cardiovascular risk in patients whose low-density lipoprotein cholesterol (LDL-C) levels
69 are well controlled by medication, primarily statins [1-9].

70
71 Optimal risk reduction in cardiovascular disease, as in other forms of major non-
72 communicable diseases, depends substantially on patients continuing to take their
73 medications for extended periods of time. This can be a particular challenge in
74 conditions such as hyperlipidemia, where the connection between symptomless
75 elevations of blood lipid levels and major cardiovascular events can seem abstract or
76 remote [10,11].

77 Recent comparative research in Russia and Norway has disclosed poor attainment of
78 cholesterol targets in both countries, despite a notably higher prescription rate of these
79 drugs in Norway [12]. Suboptimal patient adherence to prescribed treatments is likely
80 to be a contributor to such findings, which illustrates that the challenges of promoting
81 and sustaining adherence to therapy are not confined to any one country. It is
82 nevertheless clear from the results of the CEPHEUS II study that failure to reach
83 targets for lipid-based risk reduction is widespread in Russia [13]. Patient-related
84 factors associated with non-attainment of targets identified in that study included
85 considering it acceptable to miss prescribed doses more than once per week. Poor
86 adherence to medication for hypertension has likewise been documented in the
87 Izhevsk Family Study II [14].

88 Those findings exemplify observations that the rates of both discontinuation and non-
89 adherence to therapy are uniformly high in clinical trials of lipid-lowering drugs and
90 even higher in unselected populations, with adherence deteriorating in proportion to
91 the duration of follow-up [15]. Analysis of a large Swiss healthcare claims database
92 (N=4349) revealed that overall adherence to drug therapy for secondary
93 cardiovascular prevention after myocardial infarction (MI) was only moderate, but that
94 patients with high adherence to lipid-lowering therapy had a significantly reduced risk
95 for all-cause mortality and major cardiovascular events, illustrating the potential for
96 improvement of longer-term outcomes [16].

97

98 OMACOR (hereafter OM3EE; license holder Abbott Laboratories GmbH) is a
99 preparation of highly purified long-chain omega-3 polyunsaturated fatty acids (n-3
100 PUFAs) (eicosapentanoic acid/docosohexanoic acid in a 1.2:1 ratio and 90% purity)
101 available as a prescription-only medication and widely approved for use, at a daily
102 dose of 1 g, for the secondary prevention of major cardiovascular events in patients
103 who have survived an MI, or at doses of 2–4 g/day for the regulation of triglycerides
104 (TG). Prescription-only n-3 PUFAs (PnP) such as OM3EE are qualitatively distinct
105 from dietary n-3 PUFA supplements and have been evaluated in a range of clinical
106 trials [17,18].

107 The emergence of widely available digital and internet technologies with the potential
108 to provide immediate bidirectional communication between healthcare professionals
109 (doctors, nurses and pharmacists) and patients may be an important new resource for
110 promoting long-term adherence to therapies [19]. The DIAPAsOn study was devised
111 to explore patient adherence to OM3EE therapy through the medium of digital
112 technology tools.

113

114 **Methods**

115

116 Overview

117

118 A comprehensive description of the methodology of the DIAPAsOn study has been
119 published, including baseline demographic data [20].

120

121 Briefly, DIAPAsOn was a prospective observational study conducted at >100 centers
122 in the Russian Federation and devised to examine adherence to a prescription of
123 OM3EE as either a secondary preventive medical therapy (at a dose of 1 g/day) for
124 patients with a history of recent MI or for blood lipid regulation (at doses of 2–4 g/day)
125 in patients with endogenous hypertriglyceridemia insufficiently responsive to dietary
126 modification or drug therapy.

127

128 Participants were required to be adults (≥ 18 years) with a history of MI for whom
129 OM3EE was prescribed as part of a secondary prevention strategy or to have
130 Fredrickson endogenous type IIb or III hypertriglyceridemia not satisfactorily controlled
131 by statin therapy or Fredrickson endogenous type IV hypertriglyceridemia not

132 sufficiently controlled by a lipid-moderating diet. In addition, patients should have been
133 taking OM3EE for not >2 weeks prior to enrolment.

134

135 DIAPAsOn is registered at www.ClinicalTrials.gov (NCT03415152).

136

137 Schedule of visits and data collection

138 The DIAPAsOn study had a scheduled duration of 6 months. Clinic visits were
139 scheduled at the start of the study (Visit 1) and then at approximately 3 months (Visit
140 2) and at the end of the study (Visit 3). At each of the three scheduled clinic visits,
141 patients were questioned about compliance with OM3EE therapy using the
142 Questionnaire of Treatment Compliance [21]. This instrument, which has been used in
143 Russia to investigate compliance with other cardiovascular medications, produces a
144 numerical indication of compliance, as follows: 12–15 points, very high; 8–11 points,
145 high; 4–7, moderate; and 0–3, low.

146

147 Blood lipid profile was determined at each visit, along with blood pressure and heart
148 rate data, adverse events and hospitalization were recorded. Patients also received
149 inter-visit phone calls focused on adherence to therapy and safety.

150

151 A central aspect of DIAPAsOn was the use of remote digital technology that allowed
152 patients to submit data and report on matters such as health-related quality of life
153 (HRQoL) and product usability (very good, good, moderate, poor).

154

155 The electronic patient engagement and data collection system used in DIAPAsOn was
156 developed in collaboration with the medical online platform ROSMED.INFO (Moscow,
157 Russian Federation; www.rosmed.info), which has wide-ranging experience in the
158 development and operation of mobile health applications in the Russian Federation. A
159 fuller description of the system used in DIAPAsOn featured in the separate publication
160 of methodology [20].

161

162 All aspects of the DIAPAsOn study, including the associated mobile health app,
163 conformed to relevant extant national and international legal and ethical regulations
164 and requirements for the conduct of clinical research in human subjects, including the

165 provisions of the Declaration of Helsinki, including patients' right to decline further
166 participation in DIAPAsOn at any time and for any reason, whether stated or not,
167 without prejudice to their subsequent treatment. Ethical oversight of the DIAPAsOn
168 study was exercised by the independent Interuniversity Ethics Committee (Moscow,
169 Russian Federation). A list of center investigators appears in *Appendix 1*.

170

171 Statistical methods

172 Methods were predominantly descriptive, conducted in accordance with the pre-
173 approved statistical analysis plan, and used the statistical programming language R
174 (version 3.4.3; <https://mran.microsoft.com/releases/3.4.3>).

175

176 The primary endpoint—adherence to therapy with OM3EE in post-MI patients or
177 patients with hypertriglyceridemia—was assessed in an analysis population, defined
178 as those patients for whom data were obtained at least at Visits 1 and 2.

179

180 Analysis of the primary endpoint included determination at the end of the study (Visit
181 3) of the mean adherence rate, which was defined as the number of days for which the
182 patient took the full prescribed dose of OM3EE during the specified period divided by
183 the total number of days in that period. The mean score on the National Questionnaire
184 of Treatment Compliance was calculated at the same time.

185

186 Comparison of individual patient data between visits was based on either Student's t-
187 test (for dependent variables) or McNemar's test (for qualitative data).

188

189

190 Results

191
192 A total of 3000 patients were initially included in the program but 428 (14.3%) were
193 excluded because Visit 1 data were incomplete. Valid and complete data from Visit 1
194 were available for 2572 patients (85.7%), who constituted the safety population. After
195 exclusion of 405 patients lost before Visit 3, an analysis population of 2167 patients
196 was derived, representing 72.2% of total enrolled patients (Figure 1), of whom 898
197 (41.4%) were taking OM3EE for secondary prevention after MI and 1269 (58.6%)
198 were taking OM3EE for hypertriglyceridemia.

199 DIAPAsOn was completed per protocol by 1975 patients (secondary prevention,
200 n=780; hypertriglyceridemia, n=1195). This was an almost wholly Caucasian
201 population (97.74%) with a near-equal sex distribution (men, 52.8%; women, 47.2%),
202 an average age of ≈ 60 years and an average body mass index (BMI) of 30 kg/m².
203 There were more men than women in the secondary prevention subgroup (n=608;
204 67.7%), whereas women outnumbered men in the hypertriglyceridemia subgroup
205 (n=732; 57.68%). Investigator-assessed 'clinically significant' abnormalities of systolic
206 and diastolic blood pressure (BP) were recorded in 21.4% and 12.8% of patients,
207 respectively.

208 As illustrated in Figure 1, 180 of the 2167 patients who comprised the analysis
209 population (8.3%) submitted data via the mobile health platform, of whom 93 were
210 enrolled in DIAPAsOn on the basis of previous MI and 87 on a diagnosis of qualifying
211 hyperlipidemia. From start to finish, three of the initial grouping of 183 patients who
212 used the mobile health platform (1.6%) were withdrawn from the study or discontinued
213 it, compared with 1025 of 2817 (36.4%) of those who did not submit data via the
214 mobile platform. After establishment of the analysis population, early termination rates
215 were 0% and 9.7%, respectively (Figure 1).

216 217 Compliance with OM3EE

218 The mean duration of OM3EE administration was 166.5 \pm 70.6 days (median, 199
219 days; range, 14–268 days).

220
221 Among the 2167 patients whose compliance was monitored at clinical visits but not
222 self-reported via the mobile app, the mean score on the National Questionnaire of

223 Treatment Compliance at Visit 3 was 13 ± 3 points, signifying high overall compliance
224 with therapy. Mean scores >12 were also recorded at Visit 1 (12.5 ± 3.1) and Visit 2
225 (13 ± 2.9). Relative to the mean score at Visit 1, the mean scores at both Visits 2 and 3
226 were statistically significantly larger ($p<0.001$) (Table 1). The distribution of adherence
227 categories for the total study population and for the two subpopulations of DIAPAsOn
228 is shown in Figure 2. Overall, high or very high compliance was recorded for $>90\%$ of
229 respondents in both subseries.

230

231 A total of 69 patients (2.68%) discontinued OM3EE during the study. Numerically, the
232 largest groups to do so were patients who cited inconvenience of use ($n=11$) and
233 those who reported absence of stock at pharmacies ($n=6$). A total of 50 patients
234 discontinued for a plurality of reasons, including cost of medication, reluctance to
235 commit to long-term medication discontinued by another physician, normalization of
236 blood lipid values and change of residence.

237

238 Inconvenience of use was more often recorded in patients enrolled in DIAPAsOn for
239 hypertriglyceridemia than for secondary prevention (19% vs 5.9% of total cases).

240

241 Among the 180 patients who registered data via the DIAPAsOn mobile platform,
242 adherence to therapy, expressed as the ratio of days when the full prescribed dose of
243 OM3EE was taken to the total number of days in the treatment period, averaged
244 0.37 ± 0.38 over the entire program, corresponding to a low level of adherence. Mean
245 adherence between Visits 1 and 2 was 0.48 ± 0.4 , while that between Visits 2 and 3
246 was 0.24 ± 0.4 ($p<0.001$). Between Visits 1 and 2, 50.0% of patients had low adherence
247 (<0.5), 15.56% had moderate adherence (0.5–0.7) and 34.44% had high adherence
248 (≥ 0.8). Between Visits 2 and 3, the proportion of patients with low adherence
249 increased to 75.0%, while the proportion with high adherence decreased to 20.56%.
250 When the data were stratified by adherence level there was an essentially binary split,
251 with most patients reporting either low adherence (74.44%) or high adherence (25%).

252

253 In the subgroup of 93 patients taking OM3EE for secondary prevention after MI and
254 self-reporting adherence via the study app, mean adherence between Visits 1 and 3
255 was 0.47 ± 0.39 , with 66.67% of patients recording low adherence and 32.26% high

256 adherence. Mean adherence in that subgroup at Visit 2 reached 0.6 ± 0.38 ; at Visit 3 it
257 had decreased to 0.33 ± 0.45 ($p < 0.001$ for trend). At Visit 2, 32.26% of patients had low
258 adherence (< 0.5) and 45.16% had high adherence (≥ 0.8). By Visit 3, the proportion of
259 patients with low adherence had increased to 67.74%, while the proportion with high
260 adherence had declined to 30.11%.

261
262 Among the 87 app-using patients taking OM3EE for hypertriglyceridemia, mean
263 adherence between Visits 1 and 3 was 0.25 ± 0.33 , with most patients (82.76%) self-
264 reporting low adherence, and 17.24% recording high adherence. In this subgroup,
265 68.97% of patients had low adherence (< 0.5) at Visit 2 and 22.99% had high
266 adherence (≥ 0.8). By Visit 3, those percentages had changed to 82.76% and 10.34%,
267 respectively.

268
269 Cross-referencing of the results on the National Questionnaire of Treatment
270 Compliance administered at clinic visits with self-reported adherence based on the
271 ratio of administered and prescribed dose established that, among patients identified
272 by their response to the National Questionnaire as having 'very high', 'high' or
273 'moderate' adherence to therapy, app-reported mean adherences for the time period
274 between Visits 1 and 2 were 50.04%, 52.85% and 24.58%, respectively, while
275 between Visits 2 and 3 adherence was 28.67% for those assessed as having 'very
276 high' adherence by questionnaire, 19.11% for those in the 'high' category and 5.57%
277 for those in the 'moderate' category.

278
279 In the analysis population as a whole, 64.5% of patients rated the usability of OM3EE
280 after 1 month of treatment as 'very good'. A further 29.9% and 5.6%, respectively
281 rated usability as 'good' or 'moderate'. No patient rated usability as 'poor'. All the
282 patients prescribed OM3EE for secondary prevention post-MI rated the usability as
283 'very good' (70.7%) or 'good' (29.3%), while, among patients treated for
284 hypertriglyceridemia, the usability of OM3EE was rated as 'very good' by 57.1% of
285 patients, 'good' by 30.6% and 'moderate' by 12.2%.

286
287
288
289

290 Lipid indices

291 At baseline, investigator-classified 'clinically significant' deviations from normal for total
292 cholesterol (TC), LDL-C, high-density lipoprotein cholesterol (HDL-C) and TG were
293 recorded in 46.1%, 40.93%, 14.4% and 64.97% of patients, respectively. Mean values
294 of TC, TG, LDL-C, HDL-C and non-HDL-C (n-HDL-C) were 5.55 ± 1.39 , 2.99 ± 1.29 ,
295 3.5 ± 1.25 , 1.27 ± 0.46 and 4.29 ± 1.47 mmol/L, respectively.

296
297 In-study trends in mean blood lipid levels are depicted in Figure 3 for the overall
298 DIAPAsOn cohort and for the two subpopulations differentiated by indication.

299
300 Analysis of lipid profile stratified by baseline TG status revealed that increasing TG
301 levels were associated with trends in TC that were potentially deleterious to
302 cardiovascular health (Table 2).

303
304 Lipid profile parameters were recorded at baseline at Visit 1, as well as after 3 months
305 (Visit 2) and 6 months (Visit 3) of follow-up. Mean TC at Visit 1 was 5.55 ± 1.39 mmol/L.
306 This had decreased to 4.54 ± 1.04 mmol/L ($p<0.001$) by Visit 2, and at Visit 3 had been
307 further reduced, to 4.17 ± 1.04 mmol/L ($p<0.001$). Across the period of observation, the
308 net average change in mean TC was thus -1.32 ± 1.28 mmol/L.

309
310 At Visit 2, mean LDL-C was 2.71 ± 0.94 mmol/L, an average reduction from Visit 1 of
311 0.77 ± 0.92 mmol/L ($p<0.001$). Further reduction was observed at Visit 3, when the
312 mean LDL-C level was 2.46 ± 0.76 mmol/L ($p<0.001$ vs Visit 1). The average net
313 decrement in LDL-C was thus 1.02 ± 1.02 mmol/L.

314
315 Mean HDL-C levels at Visits 1, 2 and 3 were, respectively, 1.27 ± 0.46 , 1.41 ± 0.42
316 ($p<0.001$ vs Visit 1) and 1.44 ± 0.42 mmol/L ($p<0.001$ vs Visit 1), with an average
317 increment of 0.2 ± 0.53 mmol/L over the period of observation.

318
319 n-HDL-C declined by an average of 1.6 ± 1.54 mmol/L during the period of observation,
320 falling from 4.27 ± 1.47 mmol/L at Visit 1 to 3.14 ± 1.12 mmol/L at Visit 2 ($p<0.001$ vs
321 Visit 1) and to 2.71 ± 1.0 mmol/L at Visit 3 ($p<0.001$ vs Visit 1).

322

323 Mean TG was 3.0 ± 1.3 mmol/L at Visit 1, 2.0 ± 0.9 mmol/L at Visit 2 and 1.7 ± 0.7 mmol/L
324 at Visit 3 ($p<0.001$ for both vs Visit 1). The overall average reduction in mean TG was
325 thus 1.32 ± 1.15 mmol/L across the observation period.

326

327 Trends in overall TG levels during DIAPAsOn are displayed in more detail in Table 3,
328 with patients assigned to one of three baseline distribution categories. Statistically
329 significant changes in that distribution towards lower levels of TG were apparent at
330 both Visits 2 and 3, with the percentage of patients recorded as having TG <1.7
331 mmol/L increasing from 13.1% at baseline to 54% at the conclusion of the study
332 period, while the percentage recorded as having TG >2.3 mmol/L fell from 66.9% to
333 10.4%.

334

335 The average differences in TC, LDL and n-HDL-C between baseline and Visit 3 were a
336 function of baseline TG. Thus, the reductions in patients with initial TG >2.3 mmol/L
337 were -1.47 , -1.1 and -1.7 mmol/L, respectively, while in patients with initial TG $1.7-$
338 2.3 mmol/L, the average intra-study changes from baseline to Visit 3 were -1.16 , $-$
339 0.99 and -1.32 mmol/L. In patients with initial TG <1.7 mmol/L the average changes in
340 TC, LDL and n-HDL-C were -0.83 , -0.63 and -0.94 mmol/L, respectively. Significance
341 was nevertheless apparent ($p<0.001$) for each parameter in each of those subgroups.
342 The mean change in HDL during observation versus baseline was $+0.24$ mmol/L in
343 patients with TG >2.3 mmol/L ($p<0.001$), $+0.16$ mmol/L in patients with TG $1.7-2.3$
344 mmol/L ($p<0.001$) and $+0.09$ mmol/L in patients with TG <1.7 mmol/L ($p=0.002$). A
345 statistically significant decrease in TG at Visit 3 versus baseline was observed only in
346 subgroups of patients with baseline TG >2.3 or $1.7-2.3$ mmol/L (-1.81 and -0.55
347 mmol/L, respectively; $p<0.001$ for both subgroups).

348

349 Sub-analysis of the patients being treated for hypertriglyceridemia stratified according
350 to the concomitant use/non-use of statins and/or fibrates identified no substantial or
351 significant inter-group differences in baseline levels of blood lipid components.

352 Subsequent in-study trends in blood lipid fractions in both these subgroups are
353 summarized in Table 4 and indicate significant longitudinal trends in both subgroups
354 ($p<0.001$ for all indices in both comparisons) and slightly more pronounced responses
355 in those who were taking additional lipid-regulating drugs in combination with OM3EE.

356 Formal tests for inter-subgroup differences depending on the use/non-use of statins or
357 fibrates were not conducted.

358

359 Changes between baseline and Visit 3 stratified by self-reported adherence registered
360 via the study mobile app (n=180) identified no correlations or associations between
361 the level of adherence and absolute changes in levels of lipids or lipoproteins.

362 The results of investigations into the relationship between rates of adherence and
363 patient demographic factors for the whole analysis population are summarized in the
364 *Supplementary Tables*.

365

366 HRQoL outcomes

367 HRQoL data accrued from patients who contributed to the digital data collection
368 element of DIAPAsOn are summarized in Table 5. Data for the 'General Health'
369 domain were excluded due to a technical error during data transfer. Statistically
370 significant increases in the scores for all domains except pain were recorded during
371 the observation period. Further analysis, stratified by self-reported adherence to
372 therapy (low, moderate or high), indicated that these improvements in HRQoL were
373 restricted to patients with high compliance (data not shown; n=21–35).

374

375

376 Safety and adverse events data

377

378 A safety population was identified that included all patients who had completed at least
379 Visit 1 (n=2572).

380

381 A total of four adverse drug reactions (ADRs) were recorded in three patients (0.12%).
382 Two patients had one ADR and one patient had two. No serious ADRs were recorded
383 during DIAPAsOn.

384

385 Four deaths were recorded during the study, including one from cardiovascular
386 disease. None of those deaths were causally related to use of OM3EE.

387

388 There were 20 instances of hospitalization due to cardiovascular diseases, none of
389 which were attributed to use of OM3EE. Thirteen of these events affected participants

390 who were being treated for hypertriglyceridemia, all of whom were also being
391 medicated with statins and/or fibrates.

392

393 OM3EE therapy was discontinued by 69 patients. Specified reasons for doing so
394 comprised inconvenience of use (n=11), lack of availability in pharmacies (n=6) and
395 lack of effect (n=2). Reasons for the remaining 50 discontinuations were recorded as
396 'other'.

397

398

399

400 Discussion

401
402 Considered overall, the data from DIAPAsOn suggest that the introduction of OM3EE
403 had favorable effects on the blood lipid profile of our patients, consistent with
404 experience in previous controlled trials. As illustrated in Table 3 the percentage of
405 patients recorded as having TG <1.7 mmol/L quadrupled in response to OM3EE (from
406 13.1% at baseline to 54% at the conclusion of the study); conversely the percentage
407 of patients recorded as having TG >2.3 mmol/L fell to 10.4% from 66.9% at baseline.
408 These changes were accompanied by alterations in other lipoprotein fractions
409 compatible with an overall shift to a less atherogenic lipid profile, including reductions
410 in non-HDL-C which declined by an average 1.6 ± 1.54 mmol/l. This pattern of
411 response to of OM3EE was substantially independent of the use or non-use of statins
412 by patients treated for hypertriglyceridemia (Table 4).

413
414 By implication, the levels of treatment adherence in both the digital and non-digital
415 contingents of DIAPAsOn were sufficient to achieve those effects, notwithstanding
416 discrepancies in the level of adherence reported by the two groups of patients.

417
418 Among the analysis population in whom adherence was determined by in-clinic
419 questioning adherence was consistently substantially higher in the post-MI subset
420 than the hypertriglyceridemia subset (Δ 10–20%). As survivors of a major cardiac
421 episode, those patients may be more motivated to continue with their medications than
422 patients with an invisible and asymptomatic condition. This indication of a motivation
423 element based on patients' clinical history is consistent with the findings of Gaisenok
424 et al. in the PROFILE registry [22], but not wholly sustained by the findings of the
425 ISLAND study [23]. Within the post-MI group adherence fell significantly at age >75
426 years (75.31% vs >87.5% for all younger age deciles; $p=0.007$, chi-square test).

427 Frequency of dosing may also be an influence on the discrepancy in adherence
428 between our two patient subgroups. The prescribed dose of OM3EE for secondary
429 prevention post-MI is 1 g/day, whereas that for hypertriglyceridemia is 2–4 g/day. The
430 up to fourfold difference in acquisition costs, plus the necessity of a twice-daily (vs
431 once-daily) dosing regimen, may have contributed to the lower adherence recorded in
432 the hypertriglyceridemia subgroup of DIAPAsOn, and perhaps to patients' views on

433 the usability of OM3EE. However, the detailed patient interviews required to elucidate
434 this matter were not part of the study program.

435 'Very high' adherence was reported significantly more often by men than women,
436 especially in the hypertriglyceridemia subset (67.71% vs 60.38%; $p=0.007$, chi-square
437 test). Among patients with hypertriglyceridemia, 'very high' adherence was also
438 significantly more likely in those who were recorded as not working (69.23% vs
439 59.66%; $p<0.001$, chi-square test), suggesting perhaps an effect of competing
440 priorities. Adherence was much higher among early school leavers than in any other
441 category of education but, especially in the hypertriglyceridemia subset, this finding
442 was based on small numbers ($n=3$).

443 A further potentially strong influence on patient adherence and persistence is the
444 personal beliefs of health professionals and general population attitudes. 'Therapeutic
445 inertia' among physicians has been reported to contribute to poor management of
446 cardiovascular risk factors in Russia and the USA [24,25]. The fact that 31% of the
447 post-MI subgroup of DIAPAsOn were classified as current smokers may be indicative
448 of attitudinal factors that operate to the general detriment of adherence.

449 A central purpose of DIAPAsOn was to examine how the use of digital technologies
450 might promote adherence to OM3EE therapy. This aspect of the study provides
451 inconclusive and somewhat perplexing insights. The online facilities developed for
452 DIAPAsOn were used by 180 of the 2167 patients (8.3%) of the analysis population.
453 Response rates to surveys are highly variable and there are indications that, at least in
454 some instances, the rates of response to web-based exchanges are lower than are
455 achieved with paper-based methods [26]. Nevertheless, the costs of administering
456 follow-up at scale are substantially lower using digital technology than traditional print-
457 based methods and the flexibility and potential immediacy of contact between
458 physician and patient have a face-value attraction. Establishing why so many of our
459 patients declined to adopt this option would require in-depth interviewing of several
460 thousand patients and is beyond the resources of the study as originally conceived.
461 Similarly, we are not equipped to investigate whether or how physicians advocated for
462 this aspect of the study during clinic visits or how patients responded to
463 encouragement.

464 Adherence to therapy for patients self-reporting via the DIAPAsOn digital platform was
465 defined as the total number of days when the patient took the full prescribed dose of
466 OM3EE during the specified period divided by the total number of days in that period.
467 Calculated in that way, adherence appeared to be low in these patients and declined
468 during the period of observation. However, we have no means of ascertaining whether
469 the data that patients recorded accurately reflected their true adherence to study
470 medication: actual adherence rates may therefore have been higher than the recorded
471 findings suggest. Such a possibility would be compatible with the finding that in-study
472 trends in lipid and lipoprotein indices were favorable and numerically very similar in a
473 small group of digital adopters and the rest of the analysis population. We are unable
474 to demonstrate any such alignment of adherence rates, however, finding instead a
475 notable discrepancy between adherence rates registered by users of the DIAPAsOn
476 app and those in whom adherence was assessed only at clinic visits despite broadly
477 similar lipid responses in both subgroups.

478 Comparison of the digital subset with the main analysis population also identified no
479 demographic differences between the two groups that might explain the adoption/non-
480 adoption of the digital resources of DIAPAsOn. Wide-ranging technical obstacles
481 seem unlikely given the high level of smartphone penetration in Russia [27], general
482 access to the internet and the requirement for digital proficiency as an inclusion
483 condition. Average age (≈ 58 years) is not, *prima facie*, a sufficient explanation for the
484 low level of digital uptake but may have exerted an influence that our study was not
485 calibrated to identify.

486 Seemingly at variance with the low level of adoption of the mobile technology devised
487 for DIAPAsOn—and the apparently low levels of medication adherence reported by
488 those patients that used the technology—is the observation that the dropout rate
489 among the digital adopters was zero. The impression of a subset of patients who are
490 tenacious in their adherence to technology but inattentive to their medications is a
491 paradox that we are at present unable to rationalize.

492 Another finding of note in the digitally engaged patients was that HRQoL indices
493 showed a striking and sustained improvement among those who self-reported high
494 compliance. Patient numbers were small, the structure of an observational study
495 precludes determination of cause and effect and ascertaining reasons for this

496 improvement lie outside the scope of our research. This is, nevertheless, an intriguing
497 finding that would merit attention in future investigation.

498 The considered view of mobile- or internet-based health interventions to promote
499 adherence to therapy is that these innovations have potential but that both the quality
500 and range of research need to be enhanced [28-30]. DIAPAsOn should be considered
501 in that context. One lesson that might be extracted from our findings is that patient
502 engagement and participation in the development of an online or mobile telephony-
503 based adherence aid might produce longer-term gains in terms of patients' willingness
504 to engage with the service once it is brought into daily use. DIAPAsOn might perhaps
505 have benefited from a small-scale scoping study or a pilot phase before the
506 technology was deployed in such a large patient population. Evaluation of our digital
507 platform by means of the Mobile Application Rating Scale [31] might also have helped
508 to refine the technology and enhance its acceptance by patients, and the failure to
509 apply that test in advance may be considered a missed opportunity.

510 One hazard of such an approach, however, is that by catering to the priorities of
511 patients well-disposed to mobile health technology the needs of 'digital exiles' are
512 overlooked. DIAPAsOn required some evidence of individual technical competence
513 from its patients but was otherwise non-restrictive in its eligibility criteria. To that extent
514 it has provided useful insights into the sort of real-world populations that might be
515 encountered (at least in Russia) and some of the challenges that these populations
516 pose for proponents of mobile or ehealth services.

517 As with observational studies in general, the absence of a control group precludes any
518 determination of cause and effect and the potential for biases in any trial of this type
519 must be acknowledged. A retrospective calculation of the Nichol score [32] for
520 DIAPAsOn confirmed that our study rated favorably in the subcategories 'Disease-
521 Related Criteria' and 'Compliance Definition and Measurement Criteria' but scored
522 less strongly in the subcategory 'Study Design Criteria'. The duration of follow-up was
523 appropriate for a first assessment of a technical innovation but a substantially longer
524 period of observation would be needed to demonstrate robust and meaningful
525 improvements in long-term compliance and adherence, regardless of the methods or
526 technologies used.

527

528 **Conclusions**

529 Data from DIAPAsOn collected in our study confirm the clinical profile of OM3EE as
530 an effective and well-tolerated lipid-modifying therapy and as an appropriate element
531 of the medical regimen(s) for management of hypertriglyceridemia or the secondary
532 prevention of MI. Substantial (~1 mmol/L) baseline-dependent reductions in TG were
533 recorded and other nominally advantageous alterations in the lipid profile were
534 apparent, including reduction in levels of non-HDL-C, regardless of the concomitant
535 use of statins and/or fibrates. Investigations into compliance with therapy produced
536 conflicting results depending on the method of reporting used. Uptake of digital
537 methods for self-reporting of adherence to therapy was low and indicates a need for
538 further research into the factors that motivate or discourage patients to take advantage
539 of such services and of how best to use those technologies to promote treatment
540 compliance.

541

542 **Funding and disclosure**

543

544 The study is supported by Abbott.

545

546 GPA has not received any educational grants from any companies and has not
547 received any fees or non-financial support from healthcare companies related to this
548 study. GPA reports receiving honoraria for professional lectures at regional/national
549 medical educational events from healthcare companies, including Abbott, Bayer,
550 Boehringer Ingelheim, Servier.

551

552 AGA has not received any educational grants from any companies and has not
553 received any fees or non-financial support from healthcare companies related to this
554 study. AGA reports receiving honoraria for professional lectures at regional/national
555 medical educational events from healthcare companies, including Abbott, Bayer,
556 Boehringer Ingelheim, Servier.

557

558 FTA does not have any conflicts of interest.

559

560 TVF does not have any conflicts of interest.

561

562

563 **Acknowledgements**

564 The investigators thank the Ethics Committee of Pirogov Russian National Research
565 Medical University for its advice and guidance on the development of the research
566 protocol.

567 Manuscript preparation was assisted by **Hughes associates**, Oxford, UK.

568

569 Table 1. Trends in mean score on the National Questionnaire of Treatment
570 Compliance between baseline (Visit 1) and Visit 2 (3 months of study participation) or
571 Visit 3 (study completion, after 6 months).

572
573

Visit 1	Visit 2	Visit 3	Δ	p-value
12.5±3.11				
	12.99±2.88		V2-V1: 0.47±2.46	<0.001
		12.9±2.99	V3-V1: 0.44±2.52	<0.001

574
575
576

577 Table 2. Baseline lipid profile of the analysis population, stratified by TG status,
578 identified progressively more atherogenic patterns of total and lipoprotein cholesterol
579 as TG levels increased.

580

TG (mmol/l)		TC (mmol/l)	TG (mmol/l)	LDL-C (mmol/l)	HDL-C (mmol/l)	n-HDL-C (mmol/l)
<1.7	N	282	282	282	282	280
	Mean	4.67	1.21	2.93	1.33	3.37
	SD	1.33	0.31	1.14	0.5	1.4
	Median	4.5	1.2	2.7	1.2	3.25
1.7–2.3	N	431	431	430	431	431
	Mean	5.31	2.04	3.39	1.31	4
	SD	1.24	0.19	1.3	0.51	1.4
	Median	5.5	2.01	3.1	1.2	4.01
>2.3	N	1438	1438	1438	1438	1437
	Mean	5.79	3.63	3.65	1.25	4.55
	SD	1.37	1.08	1.22	0.44	1.42
	Median	5.9	3.4	3.5	1.1	4.6

581

582

583 Table 3. Trends in overall TG levels during DIAPAsOn, stratified by baseline TG
584 category.

585

Visit	Parameter	Baseline TG (mmol/l)		
		<1.7	1.7–2.3	>2.3
1	N	2151		
	n/%	282/13.1	431/20	1438/66.9
2	N	2037		
	n/%	787/38.6	670/32.9	580/28.5
	p-value Visit 2–Visit 1	<0.001	<0.001	<0.001
3	N	1905		
	n/%	1028/54	679/35.6	198/10.4
	p-value Visit 3–Visit 1	<0.001	<0.001	<0.001

586

587 Table 4. Trends in lipid and lipoprotein fractions in patients enrolled in the analysis
588 population of DIAPAsOn for hypertriglyceridemia and receiving or not receiving
589 concomitant statins and/or fibrates.

590
591
592

	TC (mmol/l)	TG (mmol/l)	LDL-C (mmol/l)	HDL-C (mmol/l)	n-HDL-C (mmol/l)
Statins or fibrates: YES					
V3–V1 mean±SD	–1.5±1.3	–1.7±1.2	–1.2±1.1	+0.2±0.5	–1.8±1.5
V3–V1 median	–1.44	–1.7	–1.0	+0.2	–1.9
P-value (V3 vs. V1)*	0.001	0.001	0.001	0.001	0.001
Statins or fibrates: NO					
V3–V1 mean±SD	–1.4±1.3	–1.5±1.1	–0.84±0.9	0.3±0.6	–1.7±1.6
V3–V1 median	–1	–1.32	–0.7	+0.2	–1.3
P-value (V3 vs. V1)*	0.001	0.001	0.001	0.001	0.001

593

594 Table 5. HRQoL data accrued from patients who contributed to the digital data-
595 collection element of DIAPAsOn. Differences (Visit 2- Visit 1) and (Visit 3- Visit 1) were
596 paired and therefore estimated only for those patients who were scored on both
597 relevant visits. Data for the 'General Health' domain were excluded due to a technical
598 error during data transfer.
599

Visit	Parameter	PF	RP	RE	E/F	EW	SF	P
1	N	82	82	82	82	82	82	82
	Mean	22.36	39.02	53.25	43.82	52.9	58.54	74.45
	SD	16.18	44.11	41.2	21.62	16.1	26.34	31.16
2	N	51	50	50	49	49	50	49
	Mean	34.56	87.5	93.33	72.28	76.01	89.25	94.23
	SD	12.34	29.99	20.2	14.09	15.7	17.31	13.19
2-1	N	35	35	35	35	35	35	35
	Mean	7.63	32.86	25.71	20.81	22.66	26.43	8.43
	SD	13.4	48.42	32.42	14.12	14.69	25.68	14.12
	p-value*	0.002	<0.001	<0.001	<0.001	<0.001	<0.001	0.001
3	N	22	22	22	22	22	22	22
	Mean	40.1	98.86	100	80.23	86.73	98.3	98.52
	SD	6.42	5.33	0	5.87	7.94	8	6.93
3-1	N	22	22	22	22	22	22	22
	Mean	6.69	29.55	18.18	18.18	25	16.48	-0.11
	SD	10.08	43.39	30.39	13.59	14.65	25.41	0.53
	p-value*	0.005	0.004	0.011	<0.001	<0.001	0.006	0.329

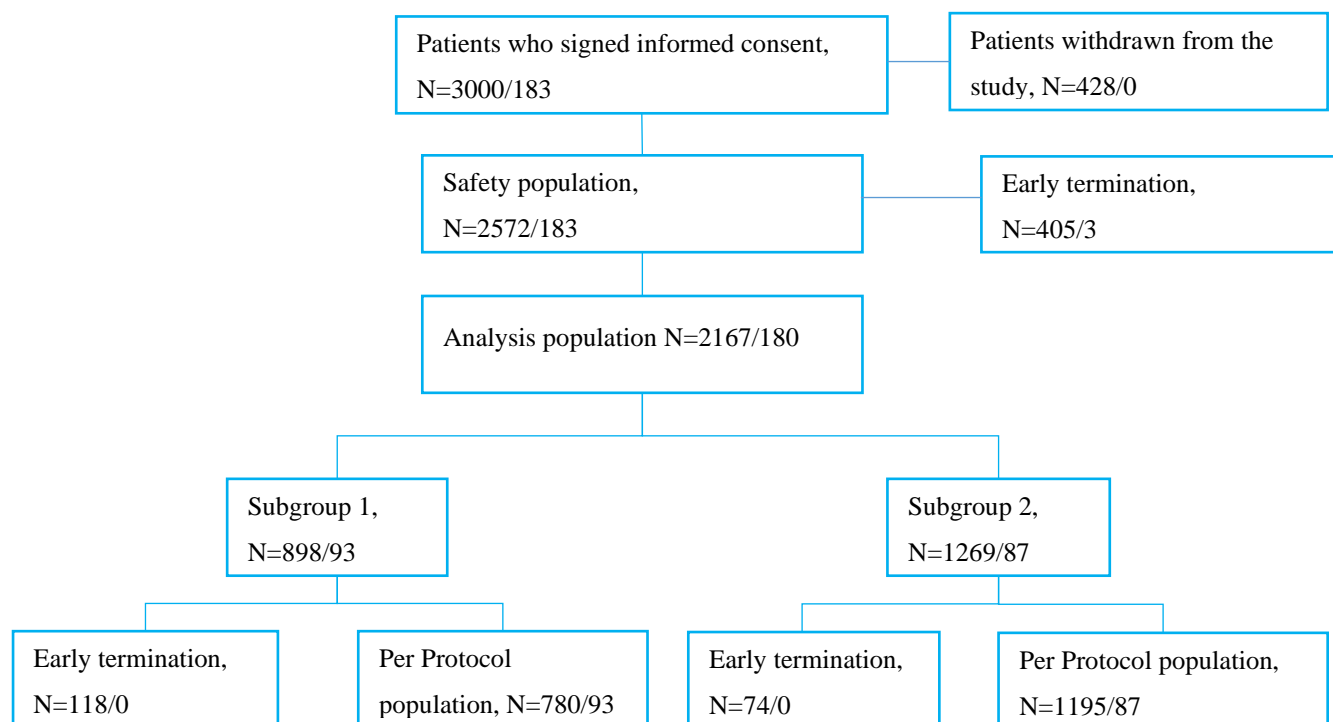
600

601 Figure 1. Derivation of patient subsets in the DIAPAsOn study.

602

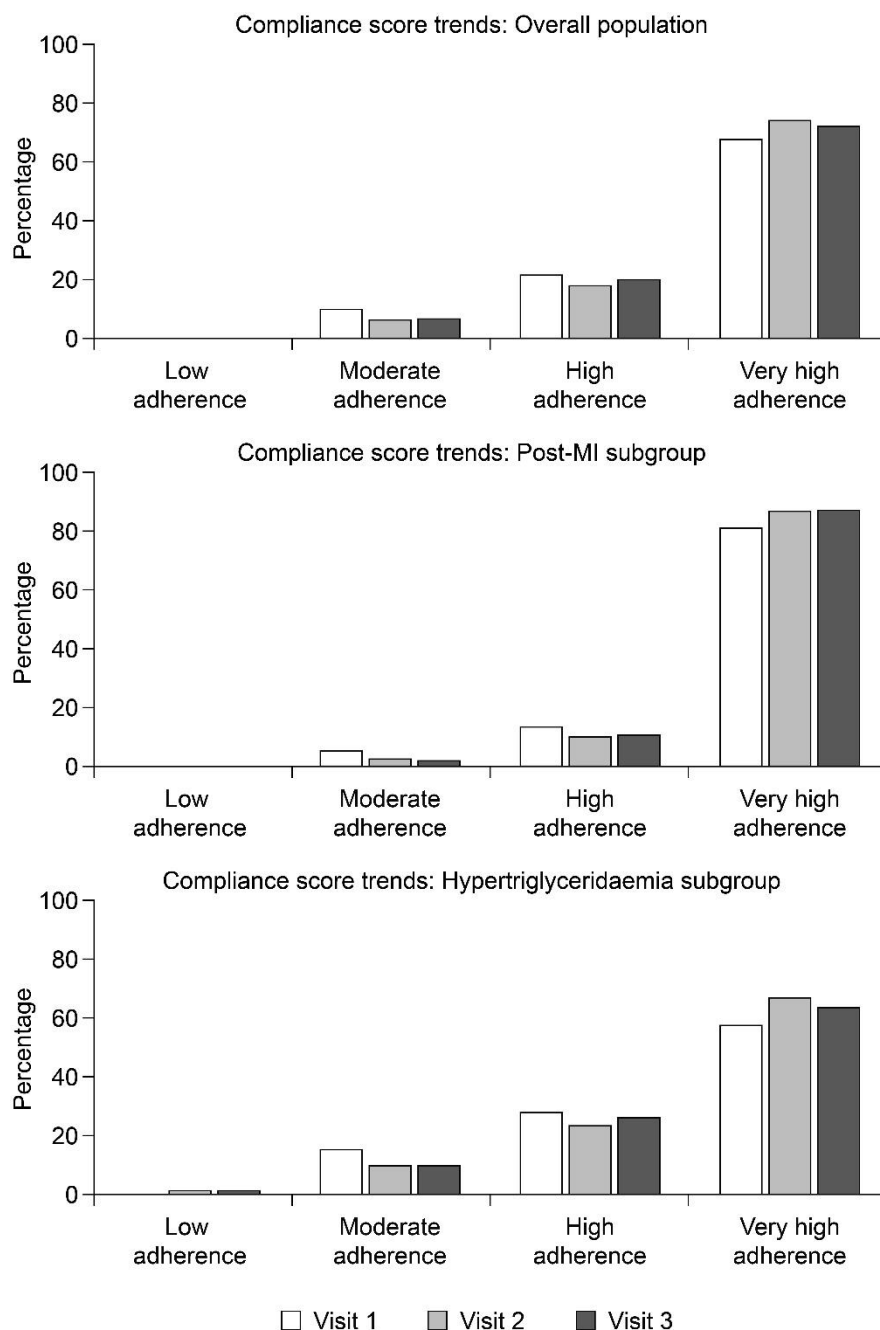
603

604



605 Figure 2. Distribution of adherence categories for the total study population and for the
606 two subpopulations (post-MI and hypertriglyceridemia) of the DIAPAsOn analysis
607 population, based on responses to the National Questionnaire of Treatment
608 Compliance.

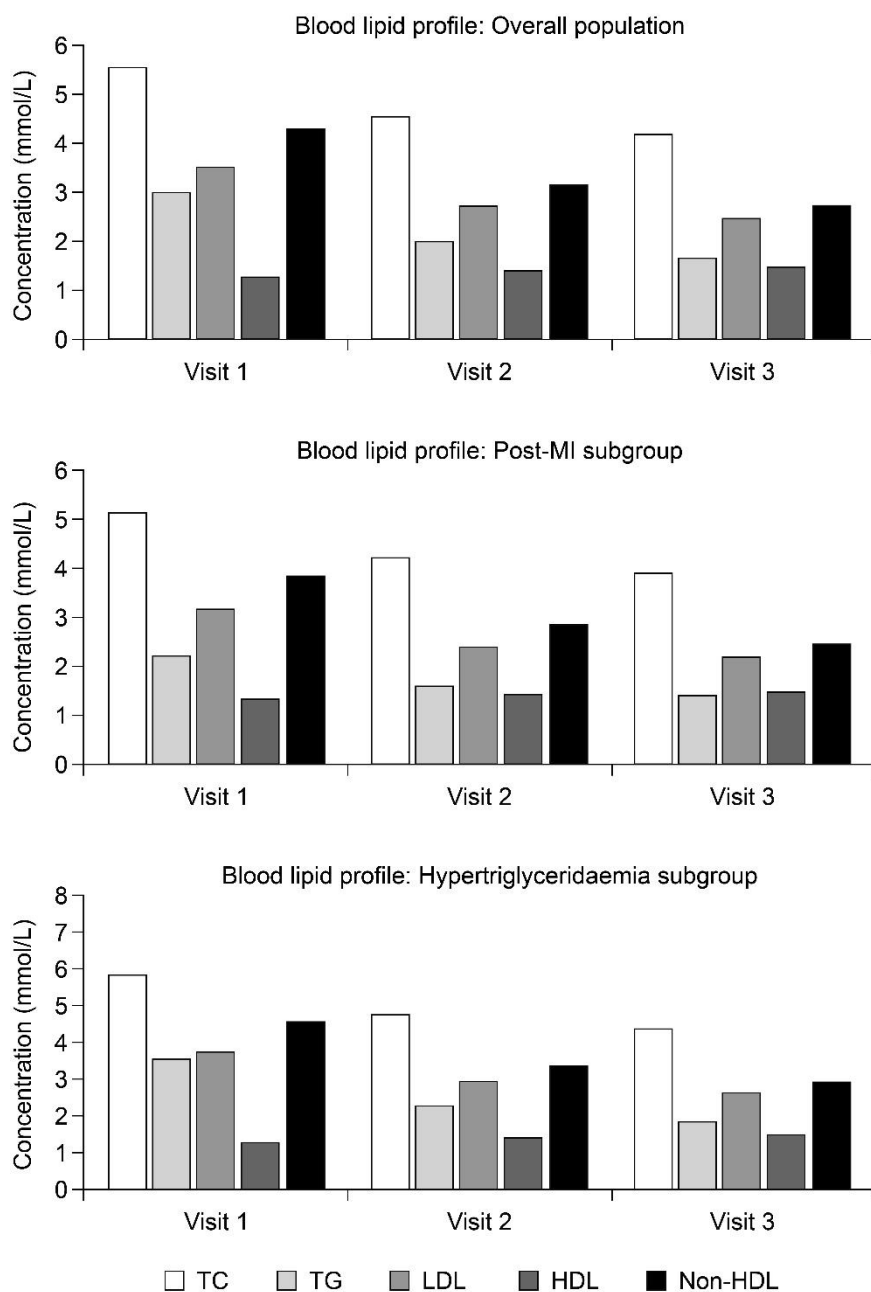
609
610



611

612 Figure 3. In-study trends in blood lipids in the total study population and for the two
613 subpopulations (post-MI and hypertriglyceridemia) of the DIAPAsOn analysis
614 population.

615
616
617
618



619
620
621
622
623
624

625 *Supplementary Tables*

626

627 **Table S 1a. Assessment of the relationship between the rate of adherence and sex.**

Visit	Parameter	Gender			
		Male		Female	
		N	Proportion (%)	N° Pt	Rate (%)
Visit 1 – Visit 3	Total	1039	100	936	100
	Low adherence	1	0.1	7	0.75
	Moderate adherence	52	5	83	8.87
	High adherence	180	17.32	214	22.86
	Very high adherence	806	77.57	632	67.52
	Mean questionnaire score	13.23		12.53	
	p-value*	<0.001			

628 Note: data are of the PP population, N = 2167; * χ -square.

629

630 **Table S1b. Assessment of the relationship between the rate of adherence to therapy and**
 631 **the sex of patients to whom OM3EE was prescribed as secondary preventive therapy**
 632 **after myocardial infarction.**

Visit	Parameter	Gender			
		Male		Female	
		N	Proportion (%)	N° Pt	Rate (%)
Visit 1 – Visit 3	Total	528	100	252	100
	Low adherence	0	0	0	0
	Moderate adherence	10	1.89	7	2.78
	High adherence	58	10.98	26	10.32
	Very high adherence	460	87.12	219	86.9
	Mean questionnaire score	13.9		13.9	
	p-value*	0.98			

633 Note: data are of the PP population, N = 2167; * χ -square.

634

635

636

637

638

639

640 **Table S1c. Assessment of the relationship between the rate of adherence to therapy and**
 641 **sex among patients to whom OM3EE was prescribed for hypertriglyceridemia**

Visit	Parameter	Gender			
		Male		Female	
		N	Proportion (%)	N	Proportion (%)
Visit 1 – Visit 3	Total	511	100	684	100
	Low adherence	1	0.2	7	1.02
	Moderate adherence	42	8.22	76	11.11
	High adherence	122	23.87	188	27.49
	Very high adherence	346	67.71	413	60.38
	Mean questionnaire score	12.54		12.03	
	p-value*	0.007			

642 Note: data are of the PP population, N = 2167; * χ -square.

643

644 **Table S2a. Assessment of the relationship between the rate of adherence and age.**

645

Visit	Parameter	Age group							
		18-44		45-60		61-75		>75	
		N	Proportion (%)	N	Proportion (%)	N	Proportion (%)	N	Proportion (%)
Visit 1 – Visit 3	Total	231	100	768	100	804	100	172	100
	Low adherence	1	0.43	3	0.39	4	0.5	0	0
	Moderate adherence	21	9.09	52	6.77	48	5.97	14	8.14
	High adherence	55	23.81	167	21.74	137	17.04	35	20.35
	Very high adherence	154	66.67	546	71.09	615	76.49	123	71.51
	Mean questionnaire score	12.45		12.78		13.15		12.87	
	p-value*	0.007							

646 Note: data are of the PP population, N = 2167; * χ -square.

647

648

649

650 **Table S2b. Assessment of the relationship between the rate of adherence to therapy and**
 651 **the age of patients to whom OM3EE was prescribed as secondary preventive therapy**
 652 **after myocardial infarction.**

653

Visit	Parameter	Age group							
		18-44		45-60		61-75		>75	
		N	Proportion (%)	N	Proportion (%)	N	Proportion (%)	N	Proportion (%)
Visit 1 – Visit 3	Total	48	100	273	100	378	100	81	100
	Low adherence	0	0	0	0	0	0	0	0
	Moderate adherence	1	2.08	3	1.1	8	2.12	5	6.17
	High adherence	5	10.42	25	9.16	39	10.32	15	18.52
	Very high adherence	42	87.5	245	89.74	331	87.57	61	75.31
	Mean questionnaire score	13.92		14.06		13.95		13.14	
	p-value*	0.007							

654 Note: data are of the PP population, N = 2167; * χ -square.

655

656

657

658 **Table S2c. Assessment of the relationship between the rate of adherence to therapy and**
 659 **age among patients to whom OM3EE was prescribed for hypertriglyceridemia.**

660

Visit	Parameter	Age group							
		18-44		45-60		61-75		>75	
		N	Proportion (%)	N	Proportion (%)	N	Proportion (%)	N	Proportion (%)
Visit 1 – Visit 3	Total	183	100	495	100	426	100	91	100
	Low adherence	1	0.55	3	0.61	4	0.94	0	0
	Moderate adherence	20	10.93	49	9.9	40	9.39	9	9.89
	High adherence	50	27.32	142	28.69	98	23	20	21.98
	Very high adherence	112	61.2	301	60.81	284	66.67	62	68.13
	Mean questionnaire score	12.07		12.07		12.44		12.64	
	p-value*	0.19							

661 Note: data are of the PP population, N = 2167; * χ -square.

662 **Table S3a. Assessment of the relationship between the rate of adherence and work status.**

Visit	Parameter	Work status			
		Works		Does not work	
		N	Proportion (%)	N	Proportion (%)
Visit 1 – Visit 3	Total	1096	100	879	100
	Low adherence	5	0.46	3	0.34
	Moderate adherence	85	7.76	50	5.69
	High adherence	251	22.9	143	16.27
	Very high adherence	755	68.89	683	77.7
	Mean questionnaire score	12.66		13.2	
	p-value*	<0.001			

663 Note: data are of the PP population, N = 2167; * χ -square.

664

665

666 **Table S3b. Assessment of the relationship between the rate of adherence to therapy and**
 667 **work status of patients to whom OM3EE was prescribed as secondary preventive therapy**
 668 **after myocardial infarction.**

Visit	Parameter	Work status			
		Works		Does not work	
		N	Proportion (%)	N	Proportion (%)
Visit 1 – Visit 3	Total	382	100	398	100
	Low adherence	0	0	0	0
	Moderate adherence	6	1.57	11	2.76
	High adherence	47	12.3	37	9.3
	Very high adherence	329	86.13	350	87.94
	Mean questionnaire score	13.9		13.9	
	p-value*	0.99			

669 Note: data are of the PP population, N = 2167; * χ -square.

670

671

672 **Table S3c. Assessment of the relationship between the rate of adherence to therapy and**
 673 **work status among patients to whom OM3EE was prescribed for hypertriglyceridemia.**

Visit	Parameter	Work status			
		Works		Does not work	
		N	Proportion (%)	N	Proportion (%)
Visit 1 – Visit 3	Total	714	100	481	100
	Low adherence	5	0.7	3	0.62
	Moderate adherence	79	11.06	39	8.11
	High adherence	204	28.57	106	22.04
	Very high adherence	426	59.66	333	69.23
	Mean questionnaire score	11.99		12.62	
	p-value*	0.001			

674 Note: data are of the PP population, N = 2167; * χ^2 -square.

675

676

677

678 **Table S4a. Assessment of the relationship between the rate of adherence and education.**

679

Visit	Parameter	Education									
		Secondary education drop-out		Secondary general		Secondary vocational		Higher		Supplementary vocational	
		N	Proportion (%)	N	Proportion (%)	N	Proportion (%)	N	Proportion (%)	N	Proportion (%)
Visit 1 – Visit 3	Total	15	100	224	100	634	100	1064	100	38	100
	Low adherence	0	0	3	1.34	3	0.47	2	0.19	0	0.19
	Moderate adherence	0	0	24	10.71	56	8.83	52	4.89	3	4.89
	High adherence	1	6.67	67	29.91	121	19.09	192	18.05	13	18.05
	Very high adherence	14	93.33	130	58.04	454	71.61	818	76.88	22	76.88
	Mean questionnaire score	14.27		11.91		12.67		13.25		12.21	
	p-value*	<0.001									

680 Note: data are of the PP population, N = 2167; * χ^2 -square.

681

682

683 **Table S4b. Assessment of the relationship between the rate of adherence to therapy and education of**
684 **patients to whom OM3EE was prescribed as secondary preventive therapy after myocardial**
685 **infarction.**

686

Visit	Parameter	Education									
		Secondary education drop-out		Secondary general		Secondary vocational		Higher		Supplementary vocational	
		N	Proportion (%)	N	Proportion (%)	N	Proportion (%)	N	Proportion (%)	N	Proportion (%)
Visit 1 – Visit 3	Total	12	100	78	100	258	100	419	100	13	100
	Low adherence	0	0	0	0	0	0	0	0	0	0
	Moderate adherence	0	0	3	3.85	8	3.1	6	1.43	0	1.43
	High adherence	1	8.33	12	15.38	24	9.3	46	10.98	1	10.98
	Very high adherence	11	91.67	63	80.77	226	87.6	367	87.59	12	87.59
	Mean questionnaire score	14.17		13.46		13.84		14.01		14.15	
	p-value*	0.3									

687 Note: data are of the PP population, N = 2167; * χ -square.

688

689

690 **Table S4c. Assessment of the relationship between the rate of adherence to therapy and**
691 **education among patients to whom OM3EE was prescribed for hypertriglyceridemia.**

Visit	Parameter	Education									
		Secondary education drop-out		Secondary general		Secondary vocational		Higher		Supplementary vocational	
		N	Proportion (%)	N	Proportion (%)	N	Proportion (%)	N	Proportion (%)	N	Proportion (%)
Visit 1 – Visit 3	Total	3	100	146	100	376	100	645	100	25	100
	Low adherence	0	0	3	2.05	3	0.8	2	0.31	0	0.31
	Moderate adherence	0	0	21	14.38	48	12.77	46	7.13	3	7.13
	High adherence	0	0	55	37.67	97	25.8	146	22.64	12	22.64
	Very high adherence	3	100	67	45.89	228	60.64	451	69.92	10	69.92
	Mean questionnaire score	14.67		11.08		11.88		12.76		11.2	
	p-value*	<0.001									

692 Note: data are of the PP population, N = 2167; * χ -square.

693

694 **Table S5a. Assessment of the relationship between the rate of adherence and marital status.**

Visit	Parameter	Marital status							
		Single		Married		Divorced		Widowed	
		N	Proportion (%)	N	Proportion (%)	N	Proportion (%)	N	Proportion (%)
Visit 1 – Visit 3	Total	82	100	1593	100	114	100	186	100
	Low adherence	0	0	7	0.44	1	0.88	0	0
	Moderate adherence	13	15.85	102	6.4	8	7.02	12	6.45
	High adherence	13	15.85	320	20.09	24	21.05	37	19.89
	Very high adherence	56	68.29	1164	73.07	81	71.05	137	73.66
	Mean questionnaire score	12.5		12.91		12.76		13.08	
	p-value*	0.49							

695 Note: data are of the PP population, N = 2167; * χ -square.

696

697

698

699 **Table S5b. Assessment of the relationship between the rate of adherence to therapy and marital**
 700 **status of patients to whom OM3EE was prescribed as secondary preventive therapy after**
 701 **myocardial infarction.**

Visit	Parameter	Marital status							
		Single		Married		Divorced		Widowed	
		N	Proportion (%)	N	Proportion (%)	N	Proportion (%)	N	Proportion (%)
Visit 1 – Visit 3	Total	31	100	574	100	57	100	118	100
	Low adherence	0	0	0	0	0	0	0	0
	Moderate adherence	4	12.9	7	1.22	3	5.26	3	2.54
	High adherence	6	19.35	55	9.58	5	8.77	18	15.25
	Very high adherence	21	67.74	512	89.2	49	85.96	97	82.2
	Mean questionnaire score	12.58		14.01		13.79		13.8	
	p-value*	0.004							

702 Note: data are of the PP population, N = 2167; * χ -square.

703

704

705 **Table S5c. Assessment of the relationship between the rate of adherence to therapy and**
 706 **marital status among patients to whom OM3EE was prescribed for hypertriglyceridemia.**

Visit	Parameter	Marital status							
		Single		Married		Divorced		Widowed	
		N	Proportion (%)	N	Proportion (%)	N	Proportion (%)	N	Proportion (%)
Visit 1 – Visit 3	Total	51	100	1019	100	57	100	68	100
	Low adherence	0	0	7	0.69	1	1.75	0	0
	Moderate adherence	9	17.65	95	9.32	5	8.77	9	13.24
	High adherence	7	13.73	265	26.01	19	33.33	19	27.94
	Very high adherence	35	68.63	652	63.98	32	56.14	40	58.82
	Mean questionnaire score	12.45		12.29		11.74		11.84	
	p-value*	0.42							

707 Note: data are of the PP population, N = 2167; * χ -square.

708

709 *Appendix 1. Listing of DIAPASoN center investigators.*

710

Region	Investigator
Astrakhan Oblast	1. Borodulya Mihail Vasil'evich
Bryansk Oblast	2. Petuhova Irina Leonidovna
Vladimir Oblast	3. Timofeeva Irina Vladimirovna
Volgograd Oblast	4. Vorob'eva Svetlana Gennad'evna
	5. Gulova Ol'ga Aleksandrovna
	6. Dugencova Larisa Anatol'evna
	7. Sytilina Natal'ya Nikolaevna
Voronezh Oblast	8. Trubicyna Irina Valentinovna
Kemerovo Oblast	9. Krestova Ol'ga Sergeevna
Krasnodar Krai	10. Alekseeva Elena Valer'evna
	11. Allaabed Hassan Adnanovich
	12. Bahmet'eva Irina Aleksandrovna
	13. Boldin Vasilij Borisovich
	14. Vikulova Larisa Vladimirovna
	15. Golovko Artyom Yur'evich
	16. Emuzova Liana Anatol'evna
	17. Zaharov Aleksandr Yur'evich
	18. Ivochkina Marina Ivanovna
	19. Imamutdinova Marina Vladimirovna
	20. Kovalenko Fyodor Andreevich
	21. Minasyan Ani Kamoevna
	22. Mkrtycheva Angelina Gennad'evna
	23. Nikitina Elena Valer'evna
	24. Novikova Svetlana Valer'evna

Region	Investigator
	25. Pavlovec Vadim Petrovich
	26. Perkova Elena Mihajlovna
	27. Prozorovskaya Yuliya Igorevna
	28. Ramenskaya Tat'yana Evgen'evna
	29. Raff Stanislav Anatol'evich
	30. Smolina Elena Garievna
	31. Subbotina Anastasiya Vladimirovna
	32. Tatarinceva Zoya Gennad'evna
	33. Usmanova Natal'ya Aleksandrovna
	34. Hazhbieva Milana Musaevna
	35. Shadzhe Evgeniya Azamatovna
Krasnoyarsk Krai	36. Hamyt- Kyzy Ajperi Hamytovna
Moscow	37. Adamyan Margarita Mamikonovna
	38. Belov Leonid L'vovich
	39. Brodichko Alena Ivanovna
	40. Bugaev Timofej Dmitrievich
	41. Vahrulina Natal'ya Konstantinovna
	42. Grigor'eva Ekaterina Anatol'evna
	43. Dvorina Ol'ga Gennad'evna
	44. Dmitrieva Irina Mihajlovna
	45. Karaeva Aida Anzorovna
	46. Novosel'ceva Ekaterina Pavlovna
	47. Oganesyan Lala Konstantinovna
	48. Polyakova Natal'ya Olegovna
	49. Ryzhova Tat'yana Vladimirovna
	50. Smirnova Ol'ga L'vovna

Region	Investigator
	51. Tavleeva Svetlana Nikolaevna
	52. Hrulenko Svetlana Borisovna
	53. Chernushenko Tat'yana Ivanovna
Moscow Oblast	54. Gukov Konstantin Aleksandrovich
	55. Gukova Tat'yana Sergeevna
	56. Malyarenko Elena Nikolaevna
	57. Sorokin Sergej Anatol'evich
Nizhny Novgorod Oblast	58. Abramova Nataliya Arkad'evna
	59. Aksenova Nataliya Aleksandrovna
	60. Barsukova Nataliya Aleksandrovna
	61. Budarina Yuliya Gennad'evna
	62. Grushin Dmitrij Valer'evich
	63. Kolesnichenko Irina Vyacheslavovna
	64. Lokonova Larisa Mihajlovna
	65. Fedorova Svetlana Nikolaevna
Novosibirsk Oblast	66. Shurkevich Anastasiya Alekseevna
Omsk Oblast	67. Minzhasarova Saniya Hasangalievna
	68. Naumov Dmitrij Valer'evich
Perm Krai	69. Zhuravleva Natal'ya Alekseevna
The Republic of Adygea	70. Shekhmirzova Dzhanelta Ruslanovna
The Republic of Bashkortostan	71. Gilyaeva El'vira Fanisovna
	72. Dmitriev Aleksej Valer'evich
	73. Murasova Rimma Ismagilovna
	74. Tarzimanova Yuliya Shamilevna
	75. Timerbulatov Timur Rasfarovich
Tatarstan	76. Ivanova Natal'ya Mihajlovna

Region	Investigator
Rostov Oblast	77. Budanova Ol'ga Veniaminovna
	78. Lobe Aleksandra Ovanesovna
	79. Mazruho Marina Karpovna
	80. Morgun Nina Karpovna
	81. Stupina Anna Alekseevna
Ryazan Oblast	82. Grusheckaya Irina Stanislavovna
	83. Samarceva Yana Nikolaevna
Samara Oblast	84. Aristova Tat'yana Vladimirovna
	85. Reznik Irina Mihajlovna
	86. Rybina Evgeniya Dmitrievna
	87. Sapunkova Svetlana Mihajlovna
	88. Filippovskaya Natal'ya Igorevna
	89. Chernova Viktoriya Nikolaevna
Saint Petersburg	90. Bulycheva-Samohina Lyubov' Vasil'evna
	91. Omel'chenko Marina Yur'evna
	92. Saf'yanova Natal'ya Viktorovna
Saratov Oblast	93. Mihajlova Elena Aleksandrovna
Smolensk Oblast	94. Novik Lyudmila Mihajlovna
Stavropol Krai	95. Vedeneva Elena Viktorovna
	96. Eremenko Aleksej Mihajlovich
	97. Kubanova Asiyat Borisovna
	98. Minasova Elena Nikolaevna
Tomsk Oblast	99. Zubova Ol'ga Valer'evna
Tula Oblast	100. Barabanova Tat'yana Yur'evna
	101. Dabizha Viktoriya Gennad'evna
	102. Kolomejceva Tat'yana Mihajlovna

Region	Investigator
	103. Prihod'ko Tat'yana Nikolaevna
Tumen Oblast	104. Ahshiyatova Nastya Ibragimovna
Khabarovsk Krai	105. Koroleva Ramilya Lotfullovna
Chelyabinsk Oblast	106. Malyutina Anastasiya Gennad'evna
	107. Fanina El'vira Rinatovna

711

712

713

714

715 References

716

717 1. Kones R. Molecular sources of residual cardiovascular risk, clinical signals, and
718 innovative solutions: relationship with subclinical disease, undertreatment, and
719 poor adherence: implications of new evidence upon optimizing cardiovascular
720 patient outcomes. *Vasc Health Risk Manag.* 2013;9:617-670.
721 doi:10.2147/VHRM.S37119

722

723

724 2. Schwartz GG, Abt M, Bao W, DeMicco D, Kallend D, Miller M, et al. Fasting
725 triglycerides predict recurrent ischemic events in patients with acute coronary
726 syndrome treated with statins. *J Am Coll Cardiol* 2015;65:2267e75.

727

728 3. Hussain A, Ballantyne CM, Saeed A, Virani SS. Triglycerides and ASCVD Risk
729 Reduction: Recent Insights and Future Directions. *Curr Atheroscler Rep.*
730 2020;22(7):25. Published 2020 Jun 3. doi:10.1007/s11883-020-00846-8

731

732 4. Morrison A, Hokanson JE. The independent relationship between triglycerides
733 and coronary heart disease. *Vasc Health Risk Manag* 2009;5 89–95.

734

735 5. Emerging Risk Factors Collaboration, Di Angelantonio E, Sarwar N, Perry P,
736 Kaptoge S, Ray KK, Thompson A, Wood AM, Lewington S, Sattar N, Packard
737 CJ, Collins R, Thompson SG, Danesh J. Major lipids, apolipoproteins, and risk
738 of vascular disease. *JAMA* 2009;302:1993–2000.

739

740 6. Lorenzatti AJ, Toth PP. New Perspectives on Atherogenic Dyslipidaemia and
741 Cardiovascular Disease. *Eur Cardiol.* 2020;15:1-9. Published 2020 Feb 26.
742 doi:10.15420/ecr.2019.06

743

744 7. Vallejo-Vaz AJ, Corral P, Schreier L, Ray KK. Triglycerides and residual risk.
745 *Curr Opin Endocrinol Diabetes Obes.* 2020;27(2):95-103.
746 doi:10.1097/MED.0000000000000530

747

748 8. Miller M, Stone NJ, Ballantyne C, et al. Triglycerides and cardiovascular
749 disease: a scientific statement from the American Heart Association.
750 *Circulation.* 2011;123(20):2292-2333. doi:10.1161/CIR.0b013e3182160726

751

752

753 9. Fan W, Philip S, Granowitz C, Toth PP, Wong ND. Residual
754 Hypertriglyceridemia and Estimated Atherosclerotic Cardiovascular Disease
755 Risk by Statin Use in U.S. Adults With Diabetes: National Health and Nutrition
756 Examination Survey 2007-2014. *Diabetes Care.* 2019;42(12):2307-2314.
757 doi:10.2337/dc19-0501

758

- 759 10. Brown WV, Jacobson TA, Braun LT. Achieving adherence to lipid-lowering
760 regimens. *J Clin Lipidol*. 2013;7(1):4-13. doi:10.1016/j.jacl.2012.11.004
761
- 762 11. Tsuyuki RT, Bungard TJ. Poor adherence with hypolipidemic drugs: a lost
763 opportunity. *Pharmacotherapy*. 2001;21(5):576-582.
764 doi:10.1592/phco.21.6.576.34541
765
- 766 12. Iakunchykova O, Averina M, Wilsgaard T, et al. Why does Russia have such
767 high cardiovascular mortality rates? Comparisons of blood-based biomarkers
768 with Norway implicate non-ischaemic cardiac damage. *J Epidemiol Community*
769 *Health* Published Online First: 15 May 2020. doi: 10.1136/jech-2020-213885.
770
- 771 13. Boytsov S, Logunova N, Khomitskaya Y; CEPHEUS II investigators.
772 Suboptimal control of lipid levels: results from the non-interventional Centralized
773 Pan-Russian Survey of the Undertreatment of Hypercholesterolemia II
774 (CEPHEUS II). *Cardiovasc Diabetol*. 2017;16(1):158. Published 2017 Dec 16.
775 doi:10.1186/s12933-017-0641
776
- 777 14. Cybulsky M, Cook S, Kontsevaya AV, Vasiljev M, Leon DA. Pharmacological treatment
778 of hypertension and hyperlipidemia in Izhevsk, Russia. *BMC Cardiovasc Disord*.
779 2016;16:122. Published 2016 Jun 3. doi:10.1186/s12872-016-0300-9
780
- 781 15. Toth PP, Granowitz C, Hull M, Anderson A, Philip S. Long-term statin
782 persistence is poor among high-risk patients with dyslipidemia: a real-world
783 administrative claims analysis. *Lipids Health Dis*. 2019;18(1):175. Published
784 2019 Sep 16. doi:10.1186/s12944-019-1099-z
785
- 786 16. Huber CA, Meyer MR, Steffel J, Blozik E, Reich O, Rosemann T. Post-
787 myocardial Infarction (MI) Care: Medication Adherence for Secondary
788 Prevention After MI in a Large Real-world Population. *Clin Ther*.
789 2019;41(1):107-117. doi:10.1016/j.clinthera.2018.11.012
- 790 17. Gutstein AS, Copple T. Cardiovascular disease and omega-3s: Prescription
791 products and fish oil dietary supplements are not the same. *J Am Assoc Nurse*
792 *Pract*. 2017;29(12):791-801. doi:10.1002/2327-6924.12535
793
- 794 18. Abdelhamid AS, Brown TJ, Brainard JS, et al. Omega-3 fatty acids for the
795 primary and secondary prevention of cardiovascular disease. *Cochrane*
796 *Database Syst Rev*. 2020;3(2):CD003177. Published 2020 Feb 29.
797 doi:10.1002/14651858.CD003177.pub5
- 798 19. Redfern J. Smart health and innovation: facilitating health-related behaviour
799 change. *Proc Nutr Soc*. 2017;76(3):328-332. doi:10.1017/S0029665117001094
800
- 801 20. Arutyunov GP, Arutyunov AG, Ageev FT, Fofanova TV. Use of digital
802 technology tools to examine patient adherence to a prescription omega-3
803 polyunsaturated acids therapy intended to mitigate cardiovascular risk: protocol
804 and preliminary demographic data from the DIAPAsOn prospective

- 805 observational study. *J Med Internet Res Prot. JMIR Res Protoc.* 2021 Aug
806 30;10(8):e29061. doi: 10.2196/29061. PMID: 34459746; PMCID: PMC8438613
807
- 808 21. Fofanova T.V., Ageev F.T., Smirnova M.D., Svirida O.N., Kuzmina A.E.,
809 Thostov A.Sh., Nelyubina A.S. National questionnaire of treatment compliance:
810 testing and application in outpatient practice // *Systemic hypertension | #2 |*
811 2014, p. 13-16
812
- 813 22. Gaisenok O, Martsevich S, Tripkosh S, Lukina Y. Analysis of lipid-lowering
814 therapy and factors affecting regularity of statin intake in patients with
815 cardiovascular disease enrolled in the PROFILE registry. *Rev Port Cardiol.*
816 2015;34(2):111-116. doi:10.1016/j.repc.2014.08.021
817
- 818 23. Ivers NM, Schwalm JD, Bouck Z, et al. Interventions supporting long term
819 adherence and decreasing cardiovascular events after myocardial infarction
820 (ISLAND): pragmatic randomised controlled trial. *BMJ.* 2020;369:m1731.
821 Published 2020 Jun 10. doi:10.1136/bmj.m1731
822
- 823 24. Drozdova LY, Martsevich SY, Voronina VP. Evaluation of cardiovascular risk
824 factors prevalence and efficacy of their correction in physicians. Estimation of
825 physicians' expertise in up-to-date clinical guidelines. Results of the
826 "Physician's health and education" study. *Ration Pharmacother Cardiol.*
827 2011;7(2):137–144 [Russian]
828
- 829 25. Bradley CK, Wang TY, Li S, et al. Patient-Reported Reasons for Declining or
830 Discontinuing Statin Therapy: Insights From the PALM Registry. *J Am Heart*
831 *Assoc.* 2019;8(7):e011765. doi:10.1161/JAHA.118.011765
832
- 833 26. Sebo P, Maisonneuve H, Cerutti B, Fournier JP, Senn N, Haller DM. Rates,
834 Delays, and Completeness of General Practitioners' Responses to a Postal
835 Versus Web-Based Survey: A Randomized Trial. *J Med Internet Res.*
836 2017;19(3):e83. Published 2017 Mar 22. doi:10.2196/jmir.6308
837
- 838 27. <https://www.statista.com/statistics/467166/forecast-of-smartphone-users-in-russia/>
839
- 840 28. Gandapur Y, Kianoush S, Kelli HM, et al. The role of mHealth for improving
841 medication adherence in patients with cardiovascular disease: a systematic
842 review. *Eur Heart J Qual Care Clin Outcomes.* 2016;2(4):237-244.
843 doi:10.1093/ehjqcco/qcw018
844
- 845 29. Hamine S, Gerth-Guyette E, Faulx D, Green BB, Ginsburg AS. Impact of
846 mHealth chronic disease management on treatment adherence and patient
847 outcomes: a systematic review. *J Med Internet Res.* 2015;17(2):e52. Published
848 2015 Feb 24. doi:10.2196/jmir.3951

- 849
850 30. Adler AJ, Martin N, Mariani J, et al. Mobile phone text messaging to improve
851 medication adherence in secondary prevention of cardiovascular disease.
852 *Cochrane Database Syst Rev.* 2017;4(4):CD011851. Published 2017 Apr 29.
853 doi:10.1002/14651858.CD011851.pub2
- 854
855 31. Stoyanov SR, Hides L, Kavanagh DJ, Zelenko O, Tjondronegoro D, Mani M.
856 Mobile app rating scale: a new tool for assessing the quality of health mobile
857 apps. *JMIR Mhealth Uhealth.* 2015;3(1):e27. doi: 10.2196/mhealth.3422.
858
- 859 32. Nichol MB, Venturini F, Sung JCY. A critical evaluation of the methodology of
860 the literature on medication compliance. *Ann Pharmacother* 1999;33:531-40.
861
862
863
864
865