

Flexibility of brain dynamics predicts clinical impairment in Amyotrophic Lateral Sclerosis

Arianna Polverino,^{1,†} Emahnuel Troisi Lopez,^{2,†} Roberta Minino,² Marianna Liparoti,³ Antonella Romano,² Francesca Trojsi,⁴ Fabio Lucidi,³ Leonardo L. Gollo,⁵ Viktor Jirsa,⁶ Giuseppe Sorrentino,^{1,2,7,*} and Pierpaolo Sorrentino^{6,7}

†These authors contributed equally to this work.

Author affiliations:

1 Institute of Diagnosis and Treatment Hermitage Capodimonte, 80131 Naples, Italy;

2 Department of Motor and Wellness Sciences, University of Naples “Parthenope”, 80133 Naples, Italy;

3 Department of Developmental and Social Psychology, University of Rome “La Sapienza”, 00185 Rome, Italy;

4 Department of Advanced Medical and Surgical Sciences, University of Campania “Luigi Vanvitelli”, 81100 Naples, Italy;

5 Turner Institute for Brain and Mental Health, School of Psychological Sciences, Monash University, 3800 Victoria, Australia;

6 Institut de Neurosciences des Systèmes, Inserm, INS, Aix-Marseille University, 13005 Marseille, France;

7 Institute of Applied Sciences and Intelligent Systems of National Research Council, 80078 Pozzuoli, Italy.

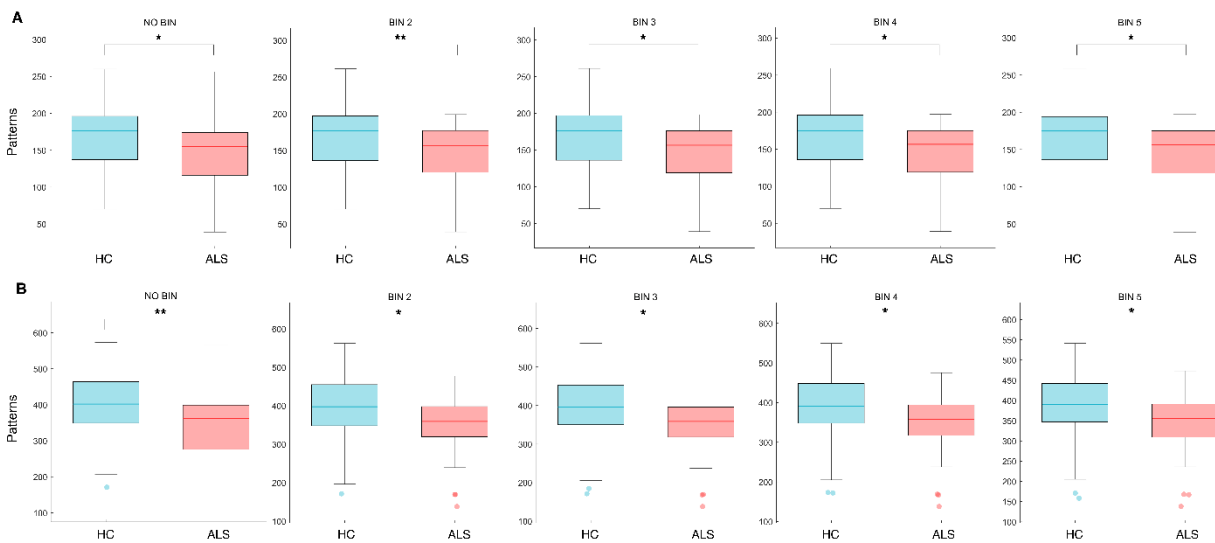
***Correspondence to:**

Prof. Giuseppe Sorrentino

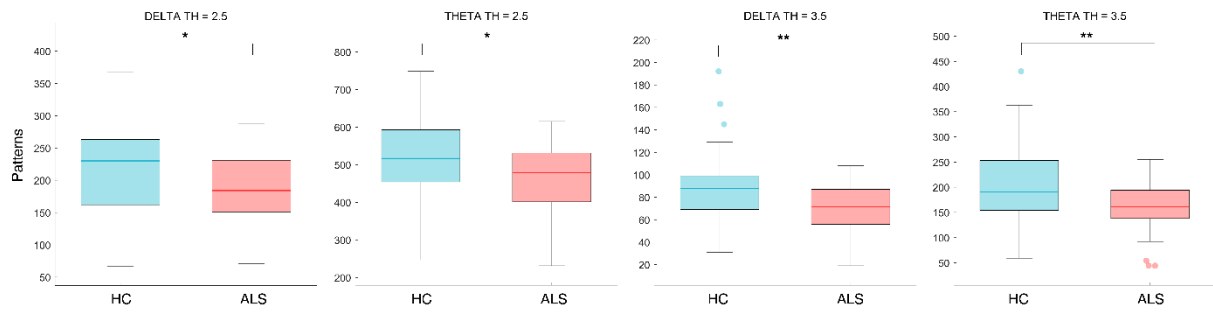
Department of Motor Sciences and Wellness, University of Naples “Parthenope”, 80133 Naples, Italy.

Email: giuseppe.sorrentino@uniparthenope.it

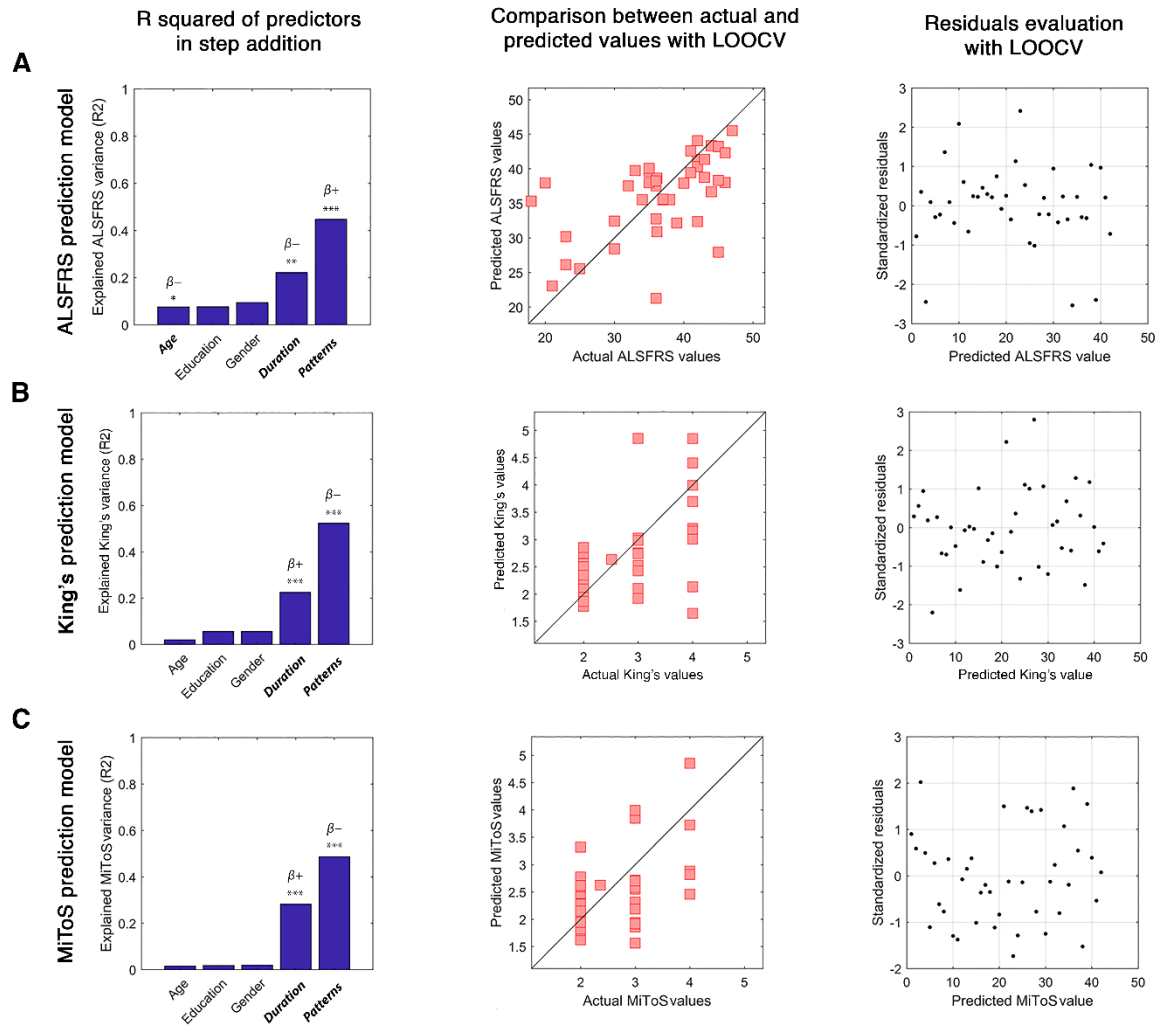
Supplementary Figures



Supplementary Figure 1. Comparison of the number of unique avalanche patterns. (A) Box plots illustrating differences in the size of the functional repertoire in healthy controls (HC) and ALS patients (ALS) with different binnings in delta frequency band. For no binning, $P = 0.010$; for binning = 2, $P = 0.009$; for binning = 3, $P = 0.010$; for binning = 4, $P = 0.010$; for binning = 5, $P = 0.011$. **(B)** Box plots illustrating differences in the size of the functional repertoire in HC and ALS patients with different binnings in theta frequency band. For no binning, $P = 0.006$; for binning = 2, $P = 0.010$; for binning = 3, $P = 0.012$; for binning = 4, $P = 0.015$; for binning = 5, $P = 0.019$. Significance P -value: * $P < 0.05$, ** $P < 0.01$.



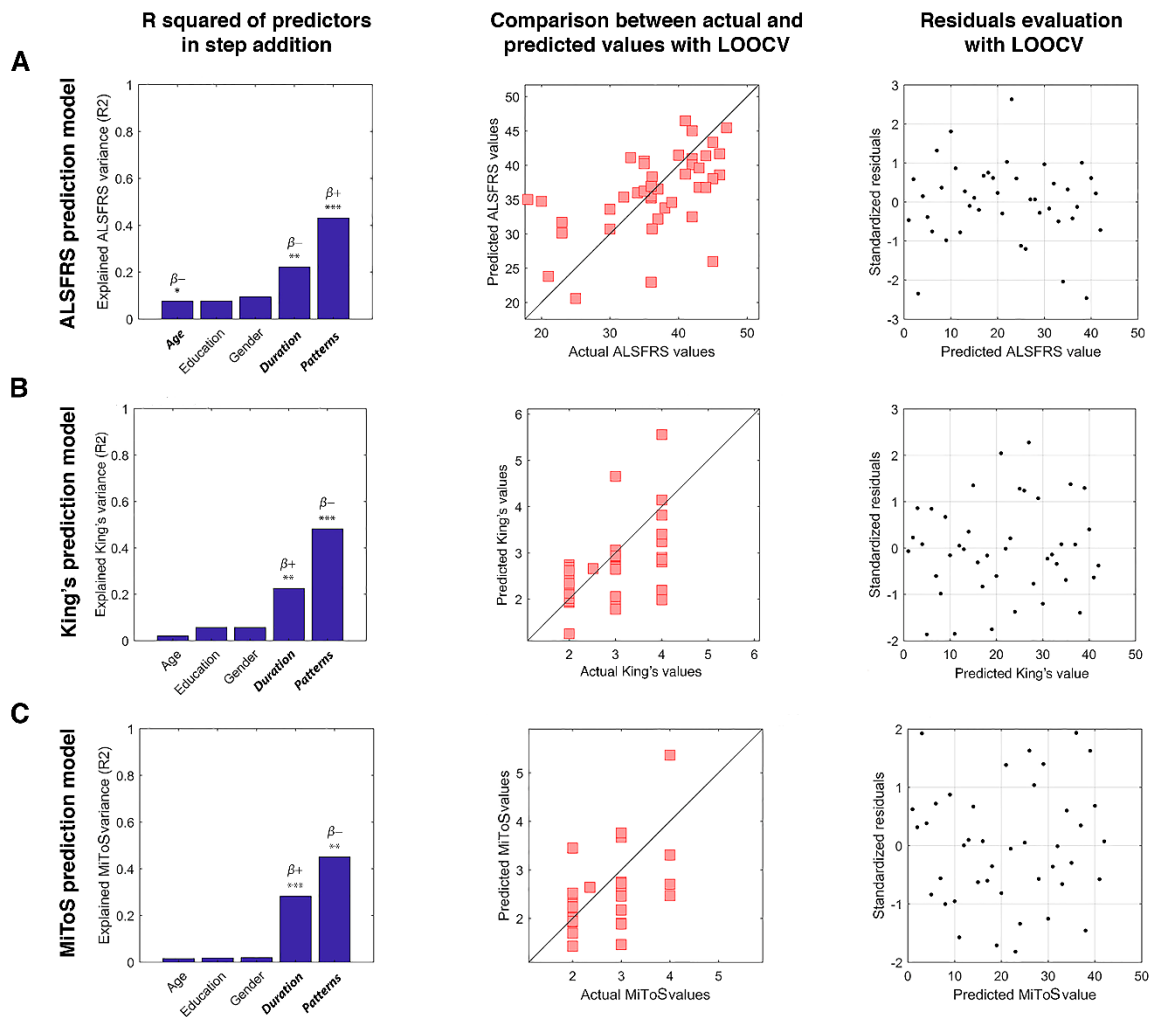
Supplementary Figure 2. Comparison of the number of unique avalanche patterns. Box plots illustrating differences in the size of the functional repertoire in healthy controls (HC) and ALS patients (ALS) with different thresholds. For $z = 2.5$, $P = 0.028$ in delta frequency band and $P = 0.030$ in theta frequency band, while for $z = 3.5$, $P = 0.005$ and $P = 0.007$ in delta and theta bands, respectively. Significance P -values: $*P < 0.05$, $**P < 0.01$.



Supplementary Figure 3. Multilinear model with leave-one-out cross-validation (LOOCV) in the delta frequency band. Using as predictors age, education, gender, disease duration and number of patterns, the model predicts: **(A)** the ALSFRS-R (age: $P = 0.036$, $\beta = -0.17$; disease duration: $P = 0.004$, $\beta = -0.06$; number of patterns: $P < 0.001$, $\beta = 0.11$); **(B)** the King's clinical staging system (disease duration: $P < 0.001$, $\beta = 0.01$; number of patterns: $P < 0.001$, $\beta = -0.02$); **(C)** the MiToS clinical staging system (disease duration: $P < 0.001$, $\beta = 0.01$; number of patterns: $P < 0.001$, $\beta = -0.01$).

In the left panel of each row, the explained variance of the variable to be predicted as a function of the predictors is illustrated. Significant predictors are indicated in bold; positive and negative coefficients are illustrated with $\beta+$ and $\beta-$, respectively; significant P -values: $*P < 0.05$, $**P < 0.01$, $***P < 0.001$. In the central panel of the rows, scatter plots of the comparison between actual and

predicted values with LOOCV are represented. The standardized residuals (standardization of the difference between observed and predicted values) are shown in the right panel of the rows. The distribution results symmetrical with respect to the 0, with a standard deviation lower than 2.5. The figure was made using MatLab 2019a.



Supplementary Figure 4. Multilinear model with leave-one-out cross-validation (LOOCV) in the theta frequency band. Using as predictors age, education, gender, disease duration and number of patterns, the model predicts: **(A)** the ALSFRS-R (age: $P = 0.034$, $\beta = -0.18$; disease duration: $P = 0.007$, $\beta = -0.05$; number of patterns: $P < 0.001$, $\beta = 0.05$); **(B)** the King's clinical staging system (disease duration: $P = 0.002$, $\beta = 0.01$; number of patterns: $P < 0.001$, $\beta = -0.01$); **(C)** the MiToS

clinical staging system (disease duration: $P < 0.001$, $\beta = 0.01$; number of patterns: $P = 0.002$, $\beta = -0.01$).

In the left panel of each row, the explained variance of the variable to be predicted as a function of the predictors is illustrated. Significant predictors are indicated in bold; positive and negative coefficients are illustrated with β^+ and β^- , respectively; significant P -values: $*P < 0.05$, $**P < 0.01$, $***P < 0.001$. In the central panel of the rows, scatter plots of the comparison between actual and predicted values with LOOCV are represented. The standardized residuals (standardization of the difference between observed and predicted values) are shown in the right panel of the rows. The distribution results symmetrical with respect to the 0, with a standard deviation lower than 2.5. The figure was made using MatLab 2019a.