

# Extended Data Fig. 1

**a**

WA1

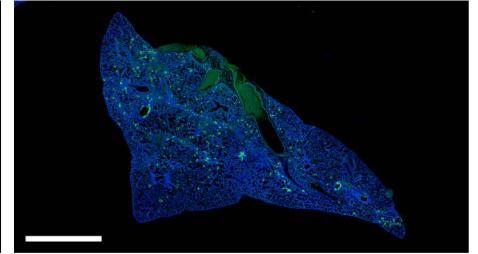
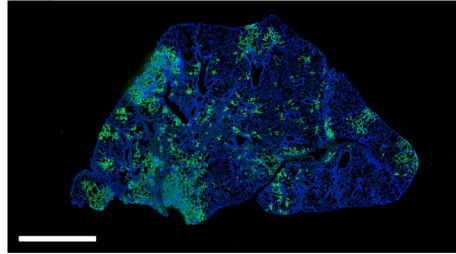
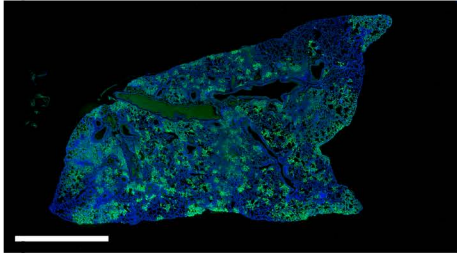
Delta

Omicron

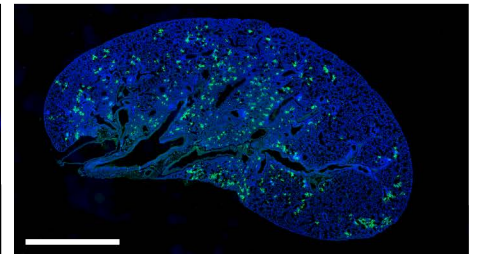
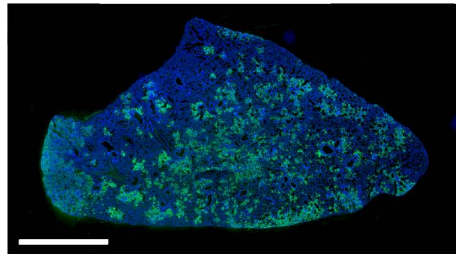
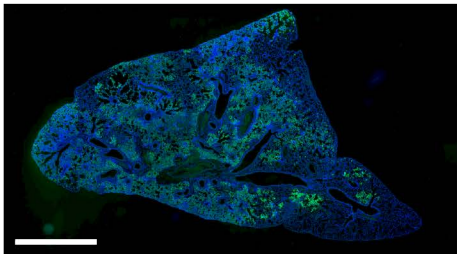


**b**

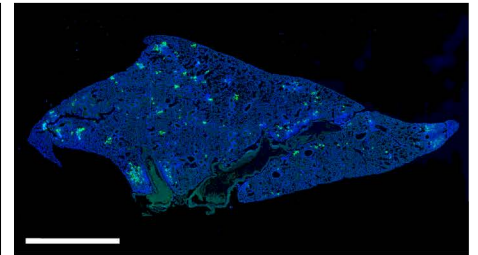
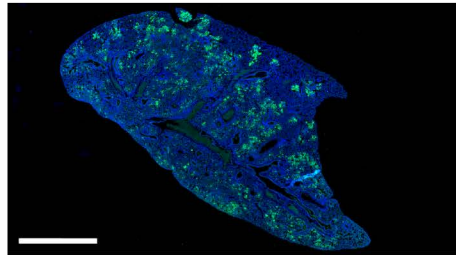
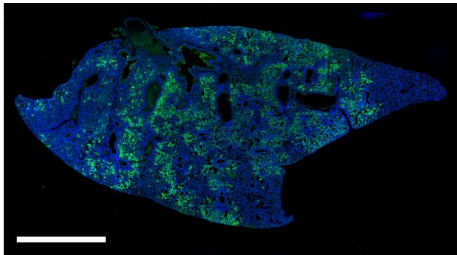
2 dpi



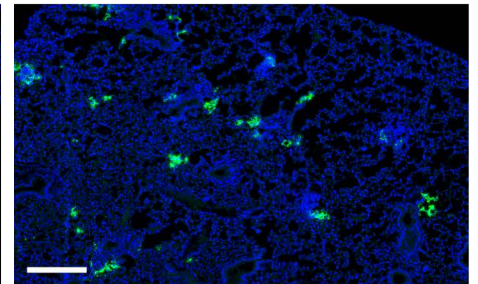
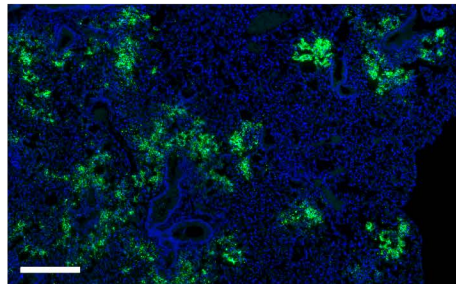
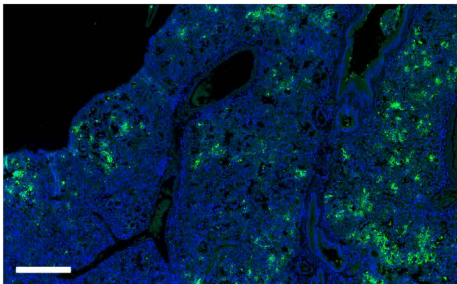
4 dpi



7 dpi

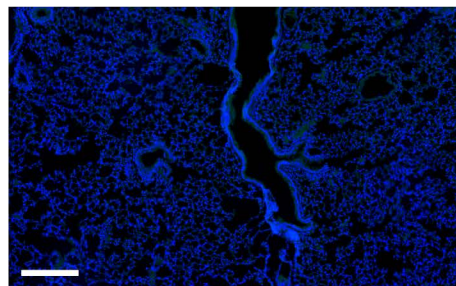
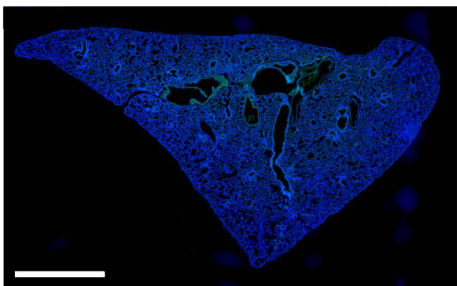


**c**



**d**

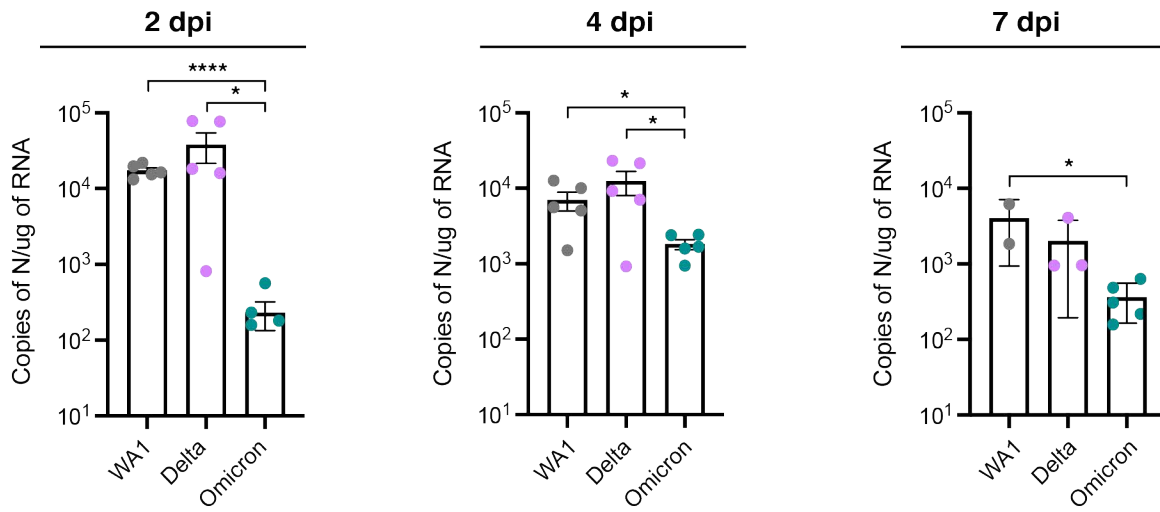
Mock Infected



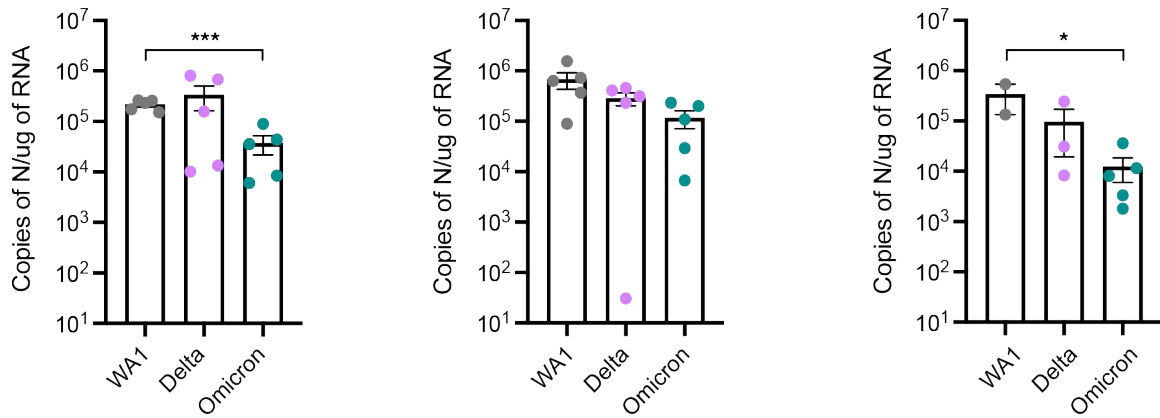
**Extended Data 1 | Physical conditions of the infection mice at 5 dpi.** **a**, Representative images of WA1-, Delta-, and Omicron-infected mice 5 dpi. WA1-infected mice were lethargic and had a hunched posture, ungroomed coat, and squinted eyes. Delta-infected mice are mildly lethargic. Omicron-infected mice appeared normal. **b**, Representative images of lungs from mice infected with WA1, Delta, or Omicron at 2, 4, and 7 days post infection. SARS-CoV-2 nucleocapsid is stained in green and nucleus is stained in blue. Scale bar, 2mm. **c**, Representative images of tissue sections from lung tissue infected with WA1, Delta, or Omicron collected at 7 dpi. SARS-CoV-2 nucleocapsid is stained in green and nucleus is stained in blue. Scale bar, 300um. **d**, Representative images of mock infected lungs. SARS-CoV-2 nucleocapsid is stained in green and nucleus is stained in blue. Scale bar, 2mm (left panel) and 300um (right panel).

# Extended Data Fig. 2

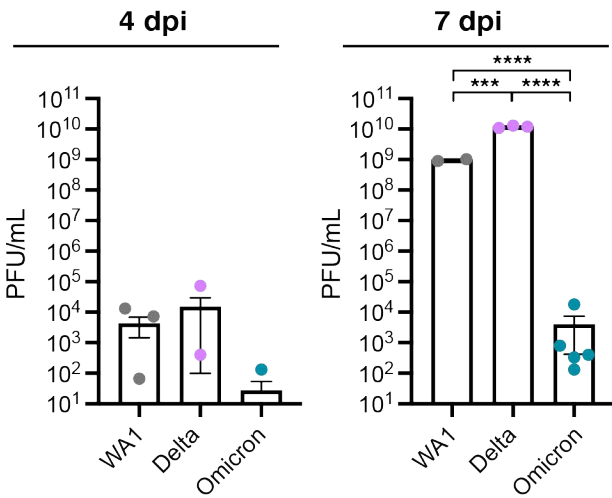
**a**



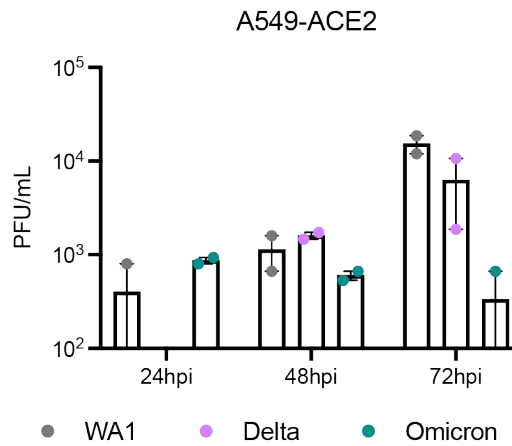
**b**



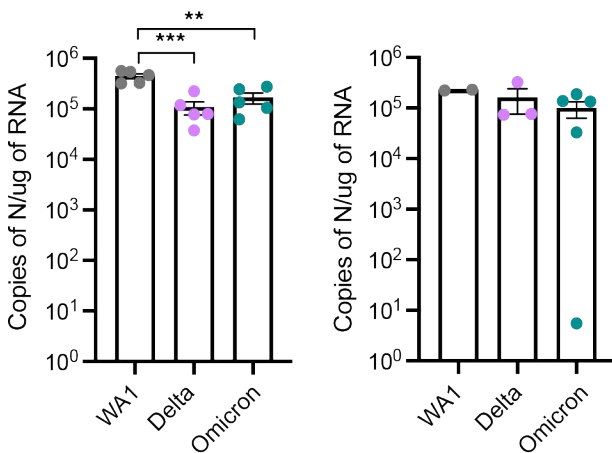
**c**



**e**



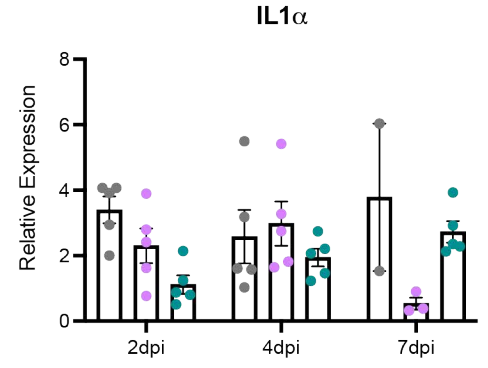
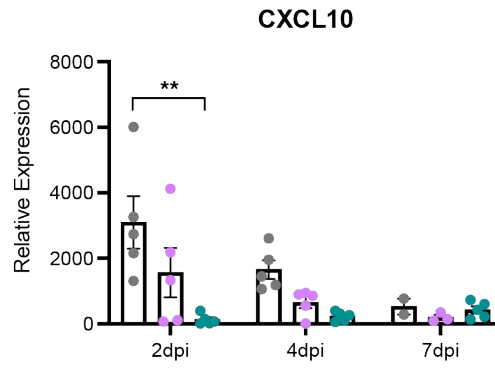
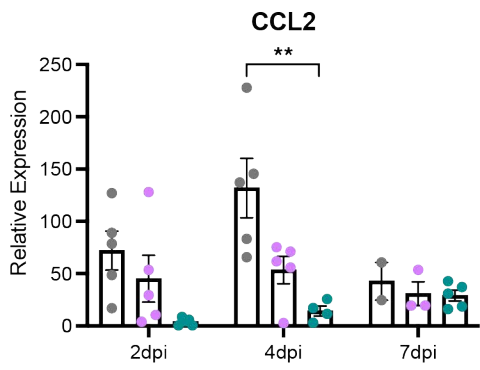
**d**



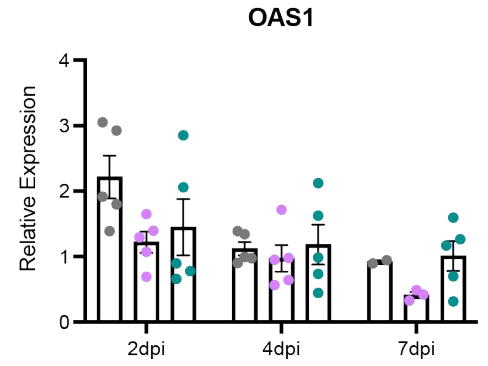
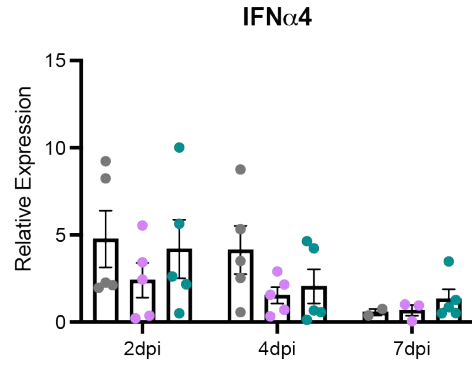
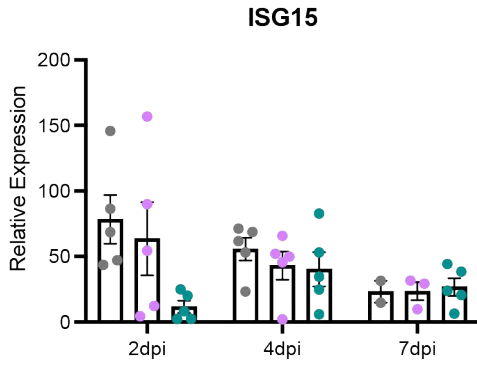
**Extended Data 2 | Lower viral replication of Omicron in mice and human cells.** **a**, RT-qPCR of SARS-CoV-2 N RNA isolated from upper respiratory tract (nasal turbinates and bronchus) of WA1-(grey), Delta-(purple), and Omicron-(teal) infected mice at indicated time points. Data are expressed in absolute copies/ug based on a standard curve of N gene with known copy number. Data is shown as an average  $\pm$  SEM at 2 (n=5), 4 (n=5), and 7 (n=2-5) dpi and analyzed by student's t-test. \*p<0.05, \*\*\*\*p<0.0001. **b**, RT-qPCR of SARS-CoV-2 N RNA isolated from lungs of infected mice at indicated time points. Data are expressed in absolute copies/ug based on a standard curve of N gene with known copy number. Data is shown as an average  $\pm$  SEM at 2 (n=5), 4 (n=5), and 7 (n=2-5) dpi and analyzed by the student's t-test. \*p<0.05, \*\*\*p<0.0005. **c**, Plaque assay titers from the brains of infected mice at indicated time point. Data is shown as an average  $\pm$  SEM at 4 (n=5) and 7 (n=2-5) dpi and analyzed by the student's t-test. \*\*\*p<0.001, \*\*\*\*p< 0.0001. **d**, RT-qPCR of SARS-CoV-2 N RNA isolated from brains of infected mice at indicated time points. Data are expressed in absolute copies/ug based on a standard curve of N gene with known copy number. Data is shown as an average  $\pm$  SEM at 4 (n=5) and 7 (n=2-5) dpi and analyzed by the student's t-test. \*\*p<0.01, \*\*\*p<0.001. **e**, Plaque assay titers from supernatants of infected A549-ACE2 (MOI of 0.01). Data is shown as average  $\pm$  SEM, n=2.

# Extended Data Fig. 3

**a**



**b**



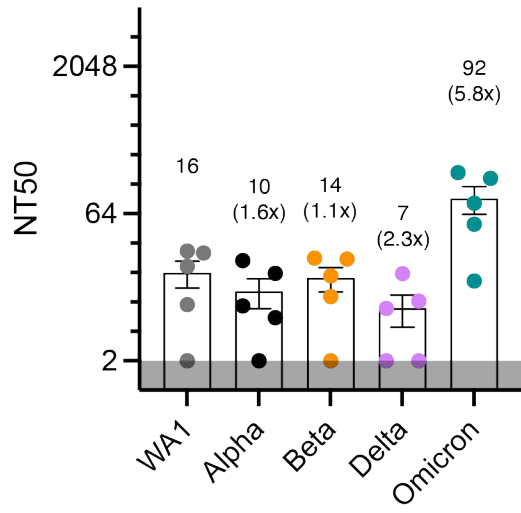
● WA1    ● Delta    ● Omicron

**Extended Data 3| Differential expression of proinflammatory markers in lungs of infected mice. a,** RT-qPCR of proinflammatory cytokines and chemokines from RNA isolated from lungs of infected mice at the indicated time points. Data are expressed relative to mock infected mice. Data is shown as the average  $\pm$  SEM at 2 (n=5), 4 (n=5), and 7 (n=2-5) dpi and analyzed by student's t-test. \*\*p<0.001. **b,** RT-qPCR of interferon stimulated genes from RNA isolated from lungs of infected mice at the indicated time points. Data are expressed relative to mock infected mice. Data is shown as the average  $\pm$  SEM at 2 (n=5), 4 (n=5), and 7 (n=2-5) dpi and analyzed by the student's t-test.

# Extended Data Fig. 4

**a**

Omicron (9 dpi)



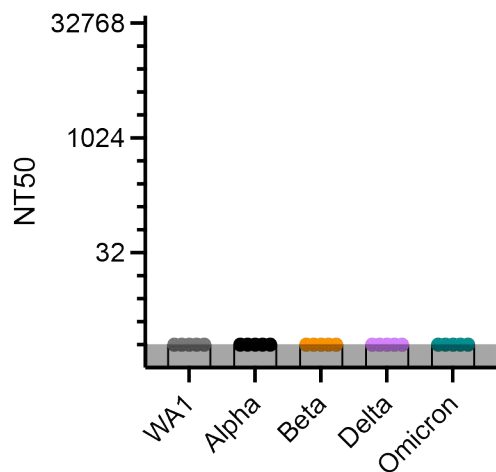
**Extended Data 4 | Cross-variant neutralization of SARS-CoV-2 isolates by sera from Omicron infected mice. a,** K18-hACE2 mice were infected with  $5 \times 10^2$  PFU of Omicron. Virus neutralization assay was carried out with serum collected at 9 dpi. NT50 data is shown as the average  $\pm$  SEM,  $n=5$ . The average NT50  $\pm$  SEM is shown with the fold change relative to NT50 of ancestral isolate (WA1).



# Extended Data Fig. 5

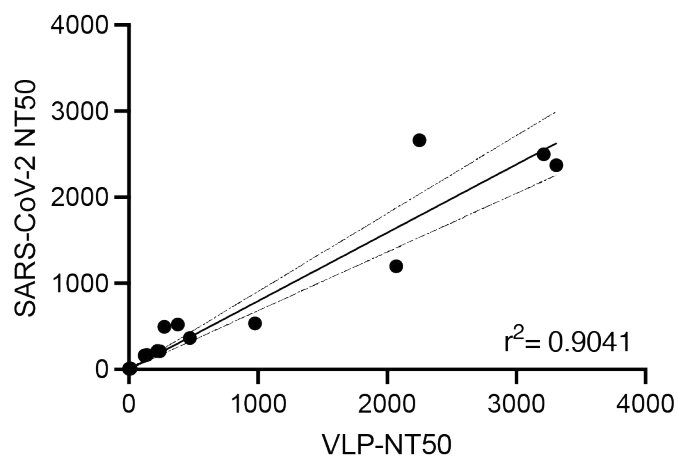
**a**

Naïve



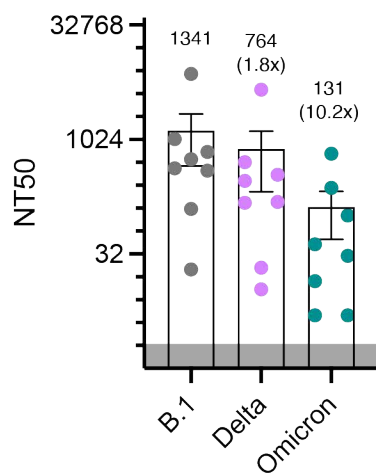
**b**

VLP vs Virus Neutralization titer



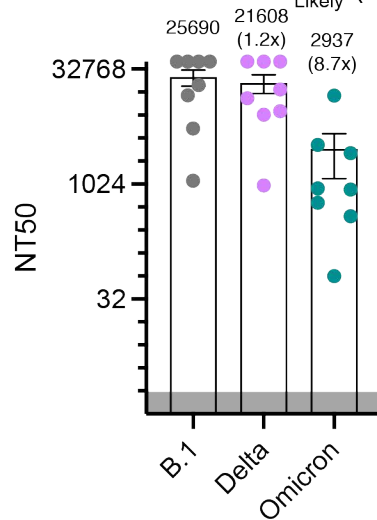
**c**

Vaccinated + Delta<sub>Likely</sub> (T1)



**d**

Vaccinated + Delta<sub>Likely</sub> (T2)



**Extended Data 5| Cross-variant neutralization of SARS-CoV-2 isolates by human sera. a,** Graph representing NT50 of sera from naïve individuals against different viral isolates, n=5 in each group. **b,** Sera neutralization of virus-like particles (VLPs) harboring spike proteins from B.1, Delta, and Omicron. Graph representing correlation of determination for VLP and authentic virus neutralization assay. **c-d,** Graph presenting NT50 of sera isolated at two different time points (T1 and T2) from vaccinated individuals with a breakthrough infection and the sera sample collected after symptoms onset, n=8. The average neutralization efficacies of sera from each graph are shown and fold changes relative to ancestral isolate (WA1) are shown in parentheses. The grey band indicates the limit of detection. Data is shown as the average  $\pm$  SEM.