

Supplementary materials

Epigenetic clock acceleration is linked to age-at-onset of idiopathic and *LRRK2*-related Parkinson's disease

Xuelin Tang ^{1*}, Paulina Gonzalez-Latapi ^{2,3*}, Connie Marras ^{2,4}, Naomi P. Visanji ^{2,5-7},
Wanli Yang ¹, Christine Sato ⁵, Anthony E. Lang ^{2,4,7}, Ekaterina Rogaeva ^{4,5#}, Ming
Zhang ^{1,8,9#}

¹ The First Rehabilitation Hospital of Shanghai, Department of Medical Genetics, School of Medicine, Tongji University, 200090, Shanghai, China

² Edmond J. Safra Program in Parkinson's disease and Morton and Gloria Shulman Movement Disorders Clinic, Toronto Western Hospital, Toronto, Canada

³ Ken and Ruth Davee Department of Neurology, Northwestern University, Feinberg School of Medicine, Chicago, Illinois, USA.

⁴ Division of Neurology, University of Toronto, Toronto, Ontario, Canada

⁵ Tanz Centre for Research in Neurodegenerative Diseases, University of Toronto, 60 Leonard Ave., Toronto, ON, Canada, M5T 2S8

⁶ Department of Laboratory Medicine and Pathobiology, University of Toronto, Toronto, Ontario, Canada

⁷ Krembil Brain Institute, Toronto, Ontario, Canada

⁸ Clinical Center for Brain and Spinal Cord Research, Tongji University, Shanghai, China

⁹ Institute for Advanced Study, Tongji University, Shanghai, China

* These authors contributed equally

Correspondence should be addressed to:

Ming Zhang (mingzhang@tongji.edu.cn)

The First Rehabilitation Hospital of Shanghai, Department of Medical Genetics, School of Medicine, Tongji University, 200090, Shanghai, China

Tel: +86 021 62933585

Or

Ekaterina Rogaeva (ekaterina.rogaeva@utoronto.ca)

Tanz Centre for Neurodegenerative Diseases, University of Toronto, 60 Leonard Avenue, Toronto, ON, Canada, M5T 2S8

Tel: (416)507-6872; Fax: (416) 603-6435

Running title: Epigenetic clock in Parkinson's disease

Supplementary Table 1. Summary of the cox proportional hazards analysis when considering DNAm-age acceleration as continuous or categorized (into three groups) variants.

| | Continuous | Categorized ^a |
|--|------------|--------------------------|
| <i>LRRK2</i> cohort at baseline* | | |
| p-value | 7.44E-10 | 1.68E-6 |
| HR | 1.16 | 2.29 |
| 95%CI | 1.11-1.21 | 1.62-3.20 |
| <i>LRRK2</i> cohort at 3-year follow-up* | | |
| p-value | 1.24E-10 | 1.65E-6 |
| HR | 1.19 | 2.56 |
| 95%CI | 1.13-1.26 | 1.74-3.75 |
| Manifesting G2019S-carriers at baseline ^Δ | | |
| p-value | 2.19E-12 | 1.70E-10 |
| HR | 1.18 | 3.83 |
| 95%CI | 1.13-1.24 | 2.53-5.78 |
| Idiopathic Parkinson's Disease patients [#] | | |
| p-value | 3.76E-5 | 0.0145 |
| HR | 1.09 | 1.53 |
| 95%CI | 1.05-1.14 | 1.09-2.16 |

*Adjusted for sex, relatedness and blood cell count (CD8T, CD4T, B cells, and Gran cells).

^ΔAdjusted for sex, relatedness, interval between age at onset and age at sample collection and blood cell count (CD8T, CD4T, B cells, and Gran cells).

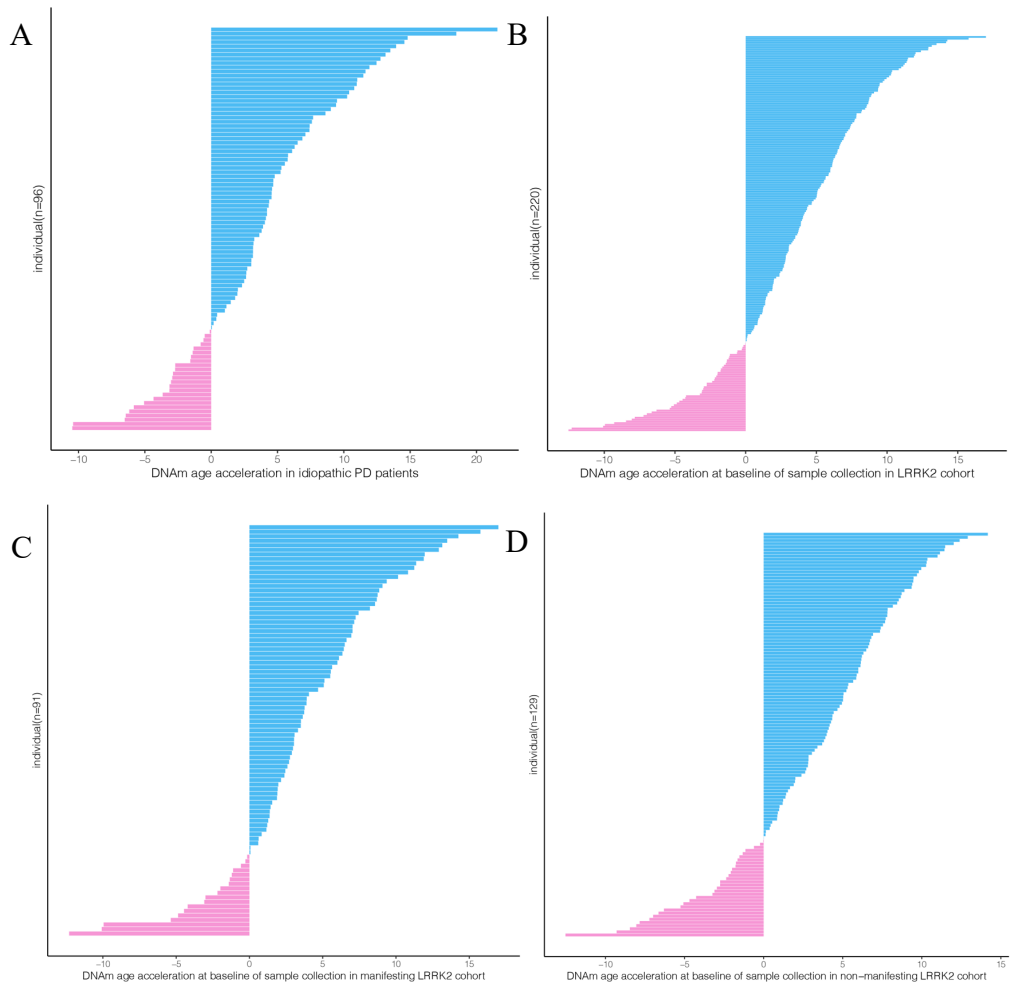
[#] Adjusted for sex, interval between age at onset and age at sample collection and blood cell count (CD8T, CD4T, B cells, and Gran cells).

^a we created different indicator number for each group (0 for slowing aging, 1 for normal aging and 2 for fast aging).

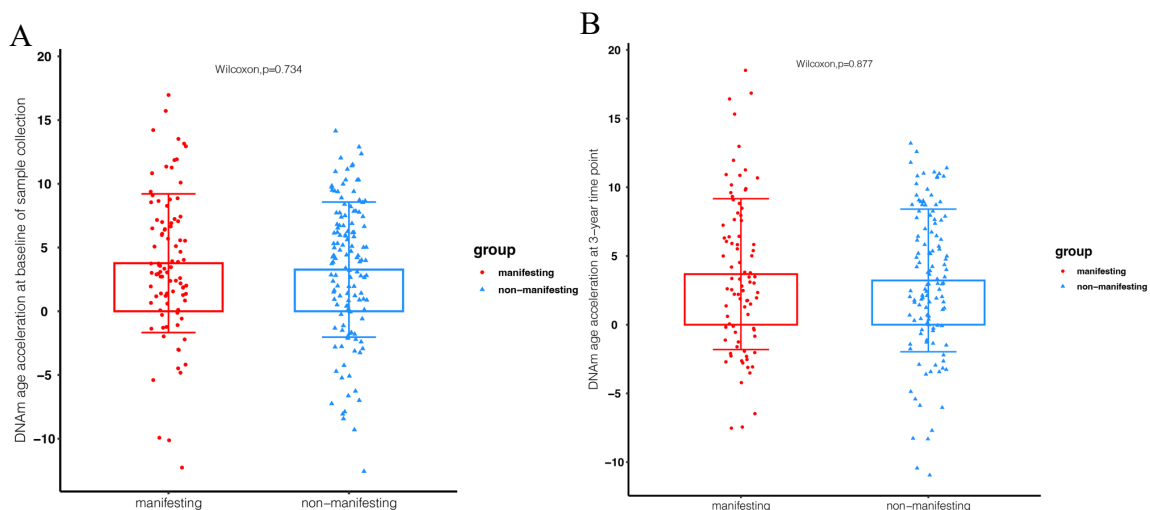
Supplementary Table 2. Clinical characteristics of phenoconverter (G2019S-carriers #54215).

| | Baseline | 1-year follow-up | 2-year follow-up | 3-year follow-up |
|-------------------------------------|----------|------------------|------------------|------------------|
| MDS-UPDRS Part I | 6 | 10 | 10 | 10 |
| MDS-UPDRS Part II | 4 | 3 | 4 | 6 |
| MDS-UPDRS Part III | 4 | 15 | 25 | 30 |
| Hoehn & Yahr | Stage 0 | Stage 1 | Stage 0 | Stage 3 |
| MoCA | NA | 25 | 25 | 20 |
| DNAm-age acceleration values(years) | -6.65 | -3.92 | -1.22 | -2.07 |

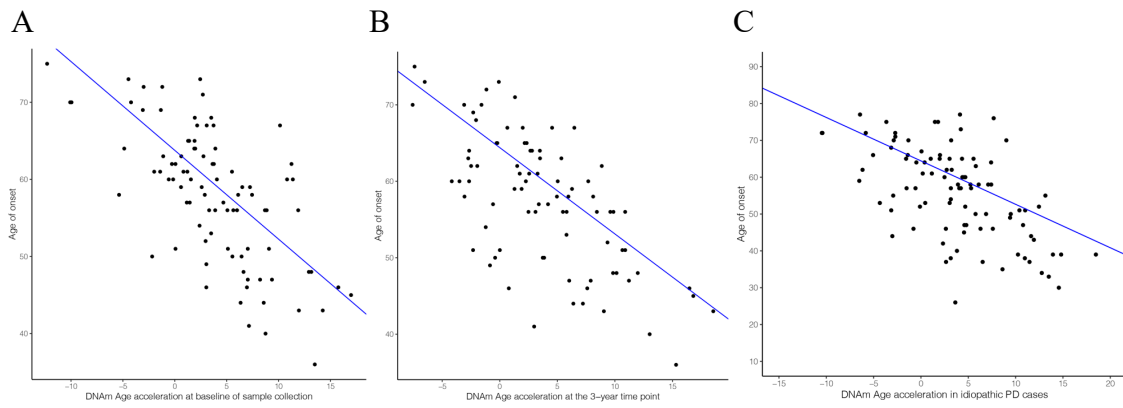
NA = not applicable.



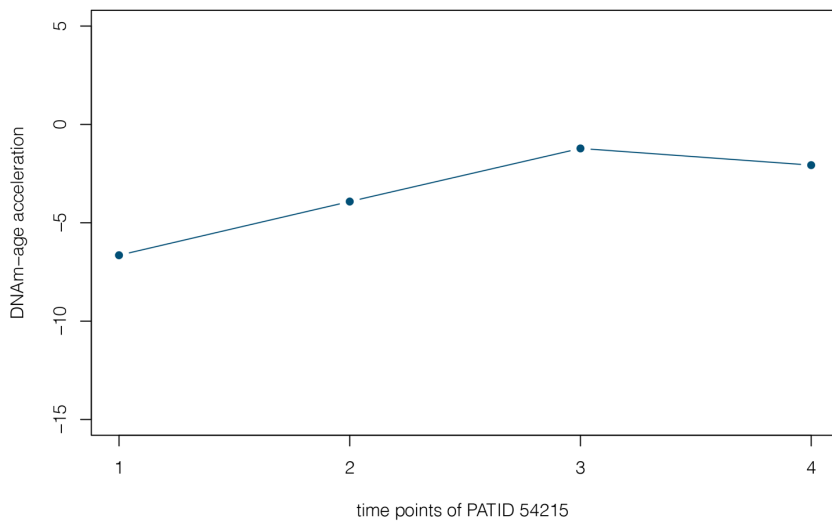
Supplementary Fig 1. The distribution of DNAm-age acceleration in 96 idiopathic PD patients (A), 220 G2019S-carriers at baseline (B), including 91 manifesting (C) and 129 non-manifesting (D) G2019S-carriers.



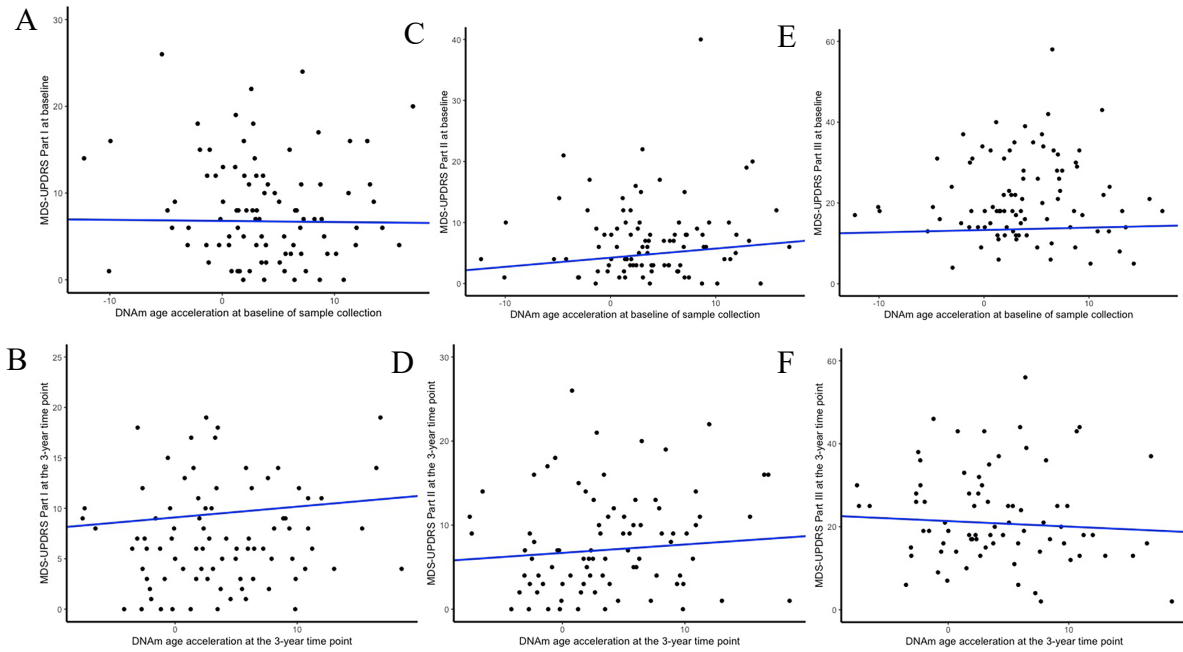
Supplementary Fig 2. Bar/scatter charts of DNAm-age acceleration in G2019S-carriers at baseline and the 3-year time-point of sample collection. There is no significant difference between DNAm-age acceleration for manifesting and non-manifesting G2019S-carriers at **A.** baseline ($p=0.73$, Wilcoxon test) or **B.** the 3-year time-point ($p=0.88$, Wilcoxon test).



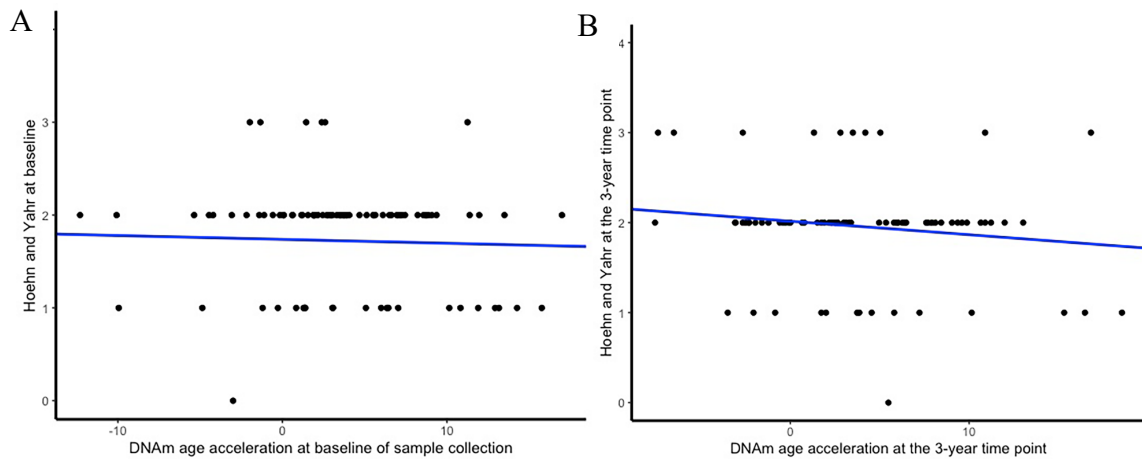
Supplementary Fig 3. Scatter plot of DNAm-age acceleration and age-at-onset in PD patients with or without an *LRRK2* mutation. The association between DNAm-age acceleration and age-at-onset in **A.** G2019S-carriers at baseline sample collection ($p=2.25E-15$, $B=-1.15$, $R^2=0.51$, $n=91$); **B.** G2019S-carriers at 3-year follow-up ($p=1.89E-14$, $B=-1.17$, $R^2=0.52$, $n=86$). **C.** idiopathic PD patients ($p=5.39E-9$, $B=-1.19$, $R^2=0.30$, $n=96$). Linear regression analyses were adjusted for sex and interval.



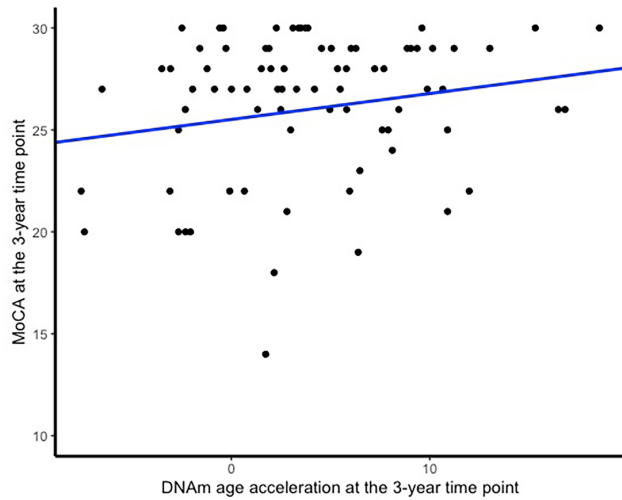
Supplementary Fig 4. DNAm-age acceleration of the phenoconverter (patient #54215) at four time points, who was non-manifesting at up to 2-year follow-up (time-points 1-3), but was diagnosed with Parkinson's Disease by 3-year follow-up (time-point 4).



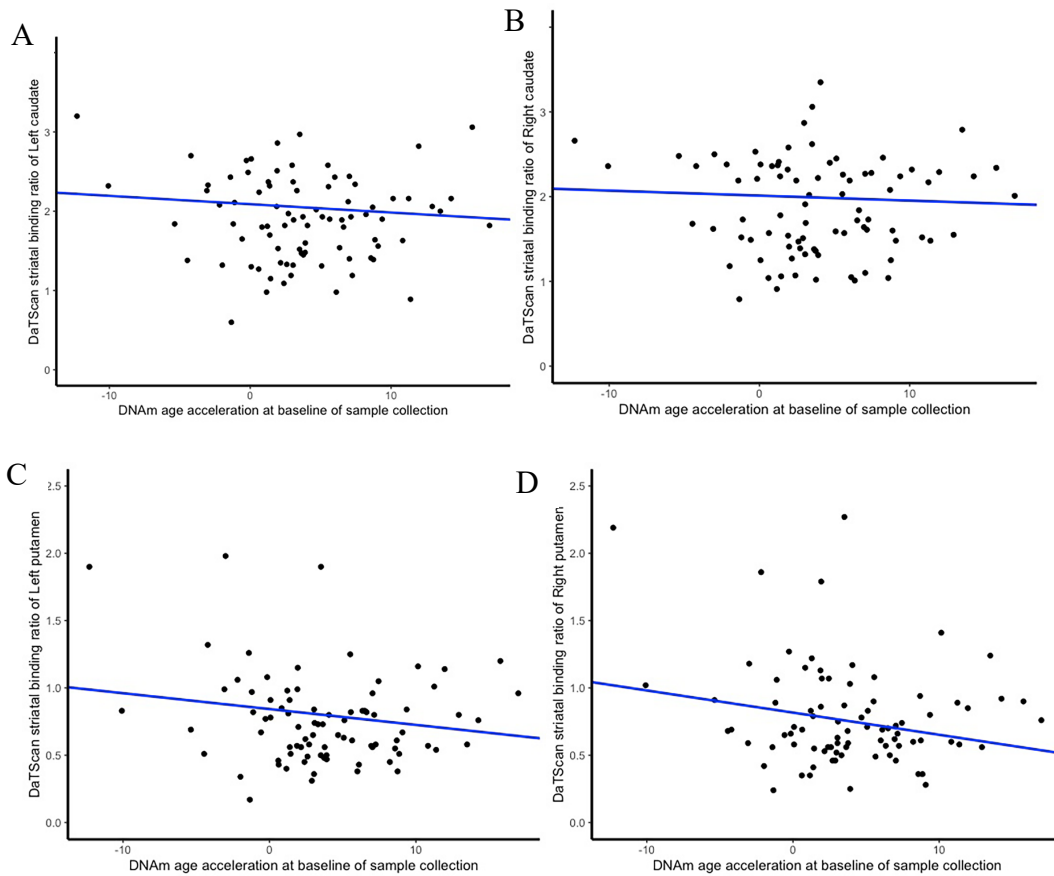
Supplementary Fig 5. Scatter plots of DNAm-age acceleration and UPDRS Part I-III at baseline (n=91) and the 3-year time point (n=85 for part I and part II, n=77 for part III) for *LRRK2* G2019S-carriers. DNAm-age acceleration is not significantly associated with UPDRS ($p > 0.05$, adjusted for sex, family and interval).



Supplementary Fig 6. Scatter plots of DNAm-age acceleration and the Hoehn and Yahr scale for *LRRK2* G2019S-carriers at (A) baseline (n=91, $p > 0.05$) and (B) 3-year follow-up (n=77, $p > 0.05$). P-values are adjusted for sex, relatedness and interval. The blue line represents the linear regression trend.



Supplementary Fig 7. Scatter plot of DNAm-age acceleration and MoCA score in G2019S-carriers at 3-year follow-up ($p=0.079$, $R^2=0.019$, $B=0.13$, adjusted for sex, $n=78$).



Supplementary Fig 8. Scatter plots of DNAm-age acceleration and DaTScan striatal binding ratio in the *LRRK2* G2019S-carriers ($n=84$) at baseline in (A) left caudate ($p=0.35$), (B) right caudate ($p=0.63$), (C) left putamen ($p=0.081$) and (D) right putamen ($p=0.046$, $R^2=0.02451$, $B=-0.016$). P-values were adjusted for sex, family and interval).