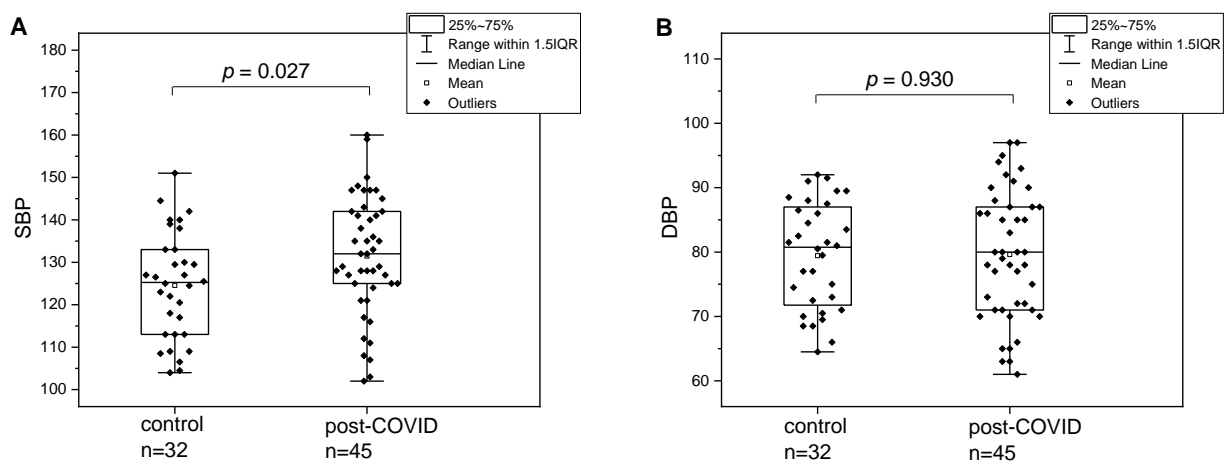


## Supplementary Material

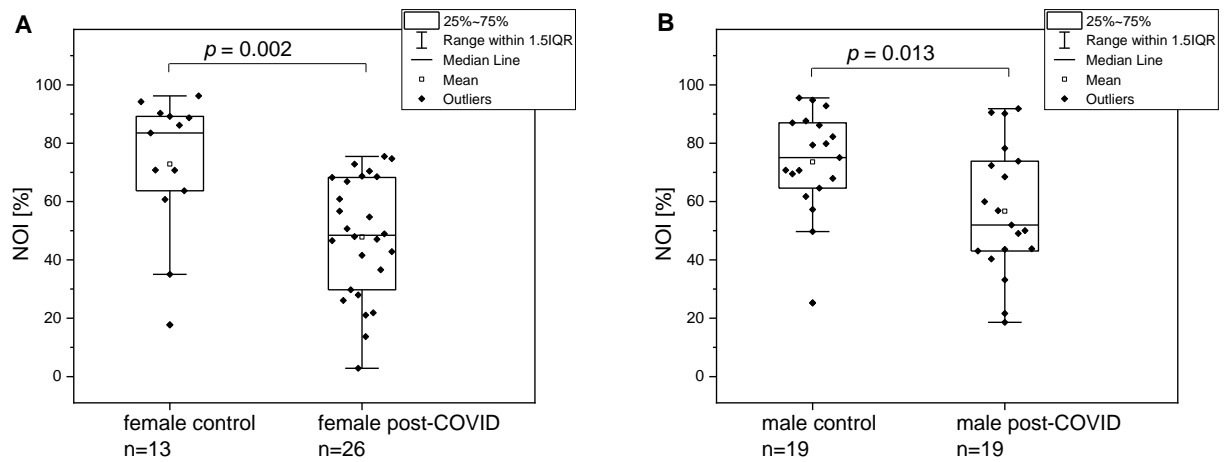
**Table 1.** Characteristics of the control and post-COVID groups by sex.

Characteristics	Control (30-50 y.)		Post-COVID (30-50 y.)	
	Female n = 13	Male n = 19	Female n = 26	Male n = 19
Age [years]	39.0 ± 6.6	36.9 ± 5.5	41.2 ± 4.5	42.0 ± 6.0
Body mass index (BMI) [kg/m <sup>2</sup> ]	23.8 ± 3.0	25.6 ± 3.3	25.1 ± 5.4	28.3 ± 3.2
SBP	116.6 ± 12.3	130.0 ± 9.8	127.4 ± 14.3	137.0 ± 11.9
DBP	76.1 ± 7.9	81.7 ± 8.0	77.1 ± 10.0	83.1 ± 9.1
Cigarette smoking	1 (7.7)	1 (5.2)	2 (7.7)	4 (21.1)
Duration of post-COVID symptoms [weeks]	–	–	15.7 ± 8.1	16.5 ± 11.8
Sum of post-COVID symptoms	–	–	7.2 ± 3.2	6.0 ± 2.8
RHR [%]	35.5 ± 6.6	31.9 ± 5.6	27.9 ± 7.6	27.3 ± 10.0
HR <sub>max</sub> [%]	21.1 ± 4.4	18.5 ± 3.0	18.2 ± 4.3	19.0 ± 4.3
NOI [%]	72.8 ± 23.8	73.6 ± 17.4	47.8 ± 20.5	56.7 ± 22.1
FM	141.4 ± 104.1	51.8 ± 26.8	85.2 ± 83.1	45.7 ± 36.6
log(HS)	1.9 ± 0.4	1.6 ± 0.4	1.8 ± 0.3	1.6 ± 0.4

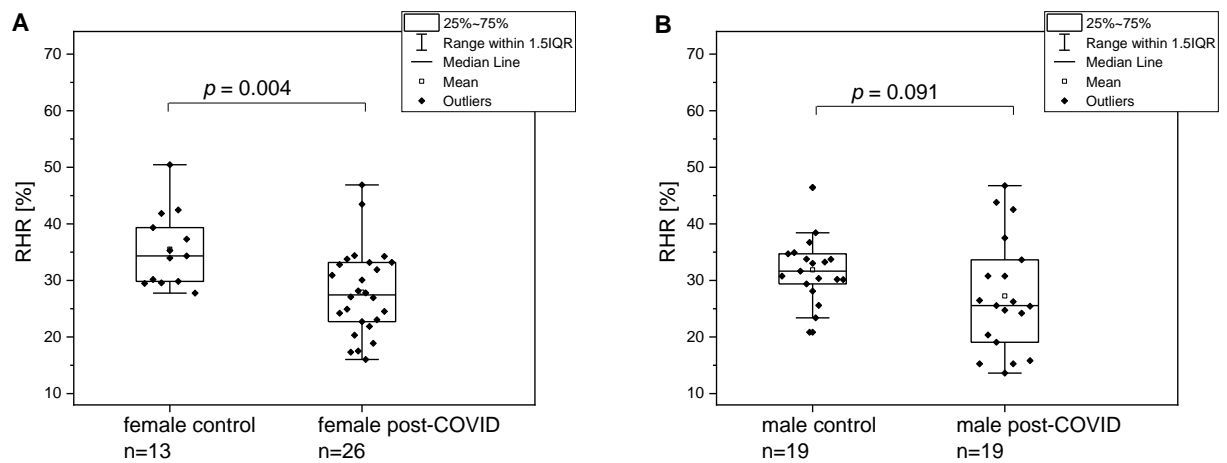
Continuous variables, mean ± SD; dichotomous variables, no. (%)



**Figure 1.** Comparison of systolic (A) and diastolic (B) blood pressure for the control group and post-COVID group. Statistical significance was set at  $p < 0.05$ . The  $p$ -values were calculated from the results of a two-sample t-test.



**Figure 2.** Comparison of the NOI parameter for the control group and post-COVID group by sex (A – female, B – male). Statistical significance was set at  $p < 0.05$ . The  $p$ -values were calculated from the results of a Mann-Whitney test for comparison A and the two-sample t-test for comparison B.



**Figure 3.** Comparison of the RHR parameter for the control group and post-COVID group by sex (A – female, B – male). Statistical significance was set at  $p < 0.05$ . The  $p$ -values were calculated from the results of a two-sample t-test.