

Hospital admissions following symptomatic infection with Sars-CoV-2 Omicron and Delta variants

Santé publique France - 12 rue du Val d'Osne - 94415 Saint-Maurice – France

Methods

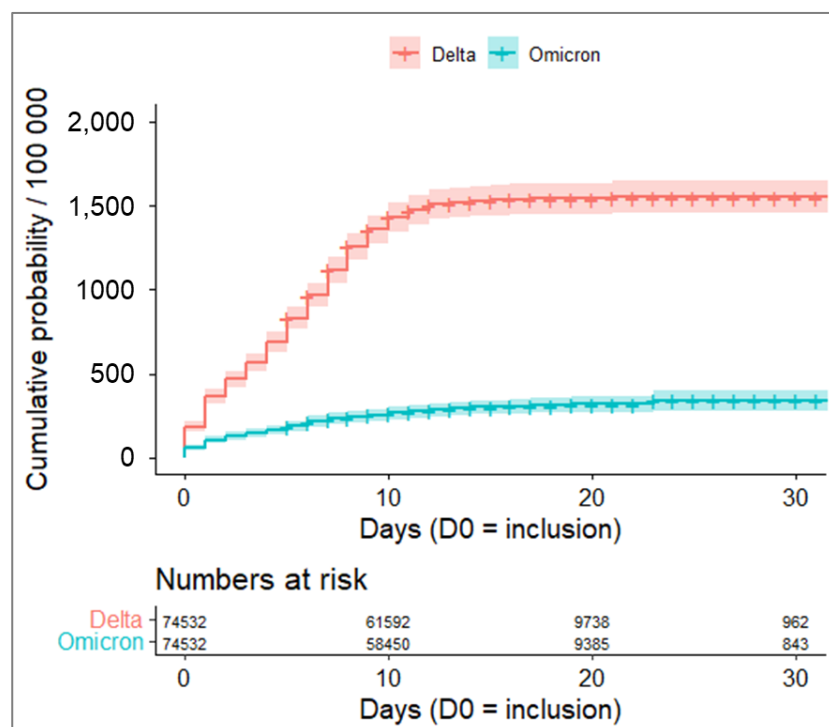
In our main paper¹, the outcome was the occurrence of a serious hospital event. In this supplement, the results are presented with hospital admissions as the outcome. The event is the first hospital admissions following virological diagnosis (or the day of diagnosis), regardless of the type of ward. Apart from this definition of the outcome, all methods are those of the main paper.

Results

Table 1. Hospital admissions observed during the follow-up period, December 2021-January 2022, France, (n= 149,064)

Characteristic	DELTA, N = 74,5321	OMICRON, N = 74,5321	p-value
Hospital admissions	1,097 (1.5%)	214 (0.3%)	<0.001

Figure 1. Evolution since the virological diagnosis of the cumulative probability of hospital admissions among cases infected by the Omicron or Delta variant of the SARS-CoV-2, December 2021-January 2022, France, (n= 149,064)



¹ Serious hospital events following symptomatic infection with Sars-CoV-2 Omicron and Delta variants: an exposed-unexposed cohort study in December 2021 from the COVID-19 surveillance databases in France

In the DELTA arm of the cohort, 98% of hospital admissions were observed within 14 days of positive sampling, and 100% within 21 days. In theOMICRON arm, 89% of events occurred within 14 days and 94% within 21 days (Figure 1).

Table 2. Univariate analysis using Cox regression for the risk of hospital admissions among cases infected by the Omicron or Delta variant of the SARS-CoV-2, December 2021-January 2022, France (n= 149,064)

		cHR ¹	95% CI ¹	p-value
Variant	DELTA	Ref	-	-
	OMICRON	0.20	[0.17 - 0.23]	<0.001
Age	[18,40)	0.20	[0.17 - 0.24]	<0.001
	[40,65)	Ref	-	-
	[65,80)	4.85	[4.24 - 5.54]	<0.001
	[80,Inf)	14.84	[12.74 - 17.3]	<0.001
Sex	F	Ref	-	-
	M	1.57	[1.41 - 1.75]	<0.001
Vaccination	Unvaccinated	Ref	-	-
	Primary vaccination	0.16	[0.14 - 0.18]	<0.001
	Booster	0.36	[0.3 - 0.44]	<0.001
Comorbidity	None	Ref	-	-
	Medium-risk	5.49	[4.88 - 6.18]	<0.001
	Very-high-risk	8.20	[6.91 - 9.74]	<0.001

¹cHR = crude Hazard Ratio, CI = Confidence Interval

Table 3. Cumulative probability at D21 of hospital admissions among cases infected by the Omicron or Delta variant of the SARS-CoV-2, stratified by co-variables, December 2021-January 2022, France, (n= 149,064)

		DELTA		OMICRON	
Age	[18,40)	355	[297 - 413]	57	[34 - 80]
	[40,65)	1,808	[1645 - 1972]	286	[218 - 354]
	[65,80)	8,035	[7117 - 8943]	1,812	[1318 - 2303]
	[80,Inf)	21,094	[18253 - 23837]	6,475	[4717 - 8201]
Sex	F	1,215	[1105 - 1325]	235	[186 - 284]
	M	1,919	[1768 - 2069]	380	[311 - 448]
Vaccination	Unvaccinated	3,122	[2901 - 3342]	640	[490 - 790]
	Primary vaccination	596	[523 - 669]	178	[140 - 216]
	Booster	1,838	[1423 - 2251]	514	[366 - 662]
Comorbidity	None	936	[859 - 1014]	168	[135 - 201]
	Medium-risk	4,579	[4133 - 5023]	1,103	[853 - 1352]
	Very-high-risk	6,587	[5491 - 7671]	1,697	[1073 - 2317]

Kaplan-Meier estimator and 95% CI

The multivariate Cox proportional-hazards model showed an interaction between variant and vaccination (Table 1). There was an increased hazard for primo-vaccinated individuals when they were infected by Omicron. This interaction had not been demonstrated in the models with serious hospital event as the outcome.

Table 4. Multivariate analysis using Cox regression for the risk of hospital admissions among cases infected by the Omicron or Delta variant of the SARS-CoV-2, stratified by age, December 2021-January 2022, France (n= 149,064)

	aHR ¹	95% CI ¹	p-value
Variant			
DELTA	Ref	—	
OMICRON	0.16	0.11 – 0.22	<0.001
Age			
[18,40)	0.21	0.17 – 0.25	<0.001
[40,65)	Ref	—	
[65,80)	3.85	3.30 – 4.49	<0.001
[80,Inf)	9.02	7.43 – 10.9	<0.001
Sex			
F	Ref	—	
M	1.67	1.50 – 1.87	<0.001
Vaccination			
Unvaccinated	Ref	—	
Primary vaccination	0.21	0.18 – 0.24	<0.001
Booster	0.20	0.16 – 0.25	<0.001
Comorbidity			
None	Ref	—	
Other	2.41	2.11 – 2.75	<0.001
Very High Risk	3.28	2.72 – 3.96	<0.001
Variant * Age			
OMICRON * [18,40)	1.08	0.66 – 1.77	0.8
OMICRON * [65,80)	1.58	1.07 – 2.34	0.021
OMICRON * [80,Inf)	2.70	1.77 – 4.11	<0.001
Variant * Vaccination			
OMICRON * Primary vaccination	1.71	1.21 – 2.42	0.002
OMICRON * Booster	0.94	0.60 – 1.48	0.8

¹HR = adjusted Hazard Ratio, CI = Confidence Interval