

Exposing and Overcoming Limitations of Clinical Laboratory Tests in COVID-19 by Adding Immunological Parameters

Running title: Overcoming Limitations of Clinical Laboratory Tests in COVID-19

Authors

Adrián Sánchez-Montalvá, MD, PhD^{1,2,3*}, Daniel Álvarez-Sierra PhD^{4*}, Mónica Martínez Gallo^{4,5,6} PhD, Janire Perurena-Prieto BSc^{4,6}, Iria Arrese-Muñoz BSc⁵, Juan Carlos Ruiz Rodríguez MD^{7,8}, Juan Espinosa-Pereiro MD^{1,2}, Pau Bosch-Nicolau MD^{1,2}, Xavier Martínez-Gómez MD^{9,10,11}, Andrés Anton PhD^{12,13,14}, Ferran Martínez-Valle MD, PhD^{3,15,16}, Mar Riveiro-Barciela MD, PhD^{3,16,17,18}, Albert Blanco-Grau BSc¹⁹, Francisco Rodríguez-Frias PhD^{17,19}, Pol Castellano-Escuder PhD²⁰, Elisabet Poyato Canton BSc²¹, Jordi Bas Minguet PhD²¹, Eva Martínez-Cáceres MD^{6,23,24}, Alex Sánchez-Pla PhD^{20,22}, Coral Zurera Egea BSc²³, Aina Teniente Serra PhD^{6,23,24}, Manuel Hernández González PhD^{4,5,6**}, Ricardo Pujol-Borrell MD, PhD^{4,5,6**} and the Hospital Vall d'Hebron COVID-19 Immune Profile Group.

¹ Infectious Disease Department, Hospital Universitari Vall Hebron, Barcelona, Spain

² International Health Programme Institut Català de la Salut, Vall Hebron Research Institute (VHIR), Campus Vall Hebron, Barcelona, Spain.

³ Department of Medicine, Universitat Autònoma Barcelona, Campus Vall Hebron, Barcelona, Spain

⁴ Translational Immunology Research Group, Vall Hebron Research Institute (VHIR), Campus Vall Hebron, Barcelona, Spain.

⁵ Immunology Department, Hospital Universitari Vall Hebron, Barcelona, Spain

⁶ Department of Cell Biology, Physiology, and Immunology, Universitat Autònoma Barcelona, Campus Vall Hebron, Barcelona, Spain.

⁷ Intensive Medicine Department, Hospital Universitari Vall Hebron, Barcelona, Spain.

⁸ Organ Dysfunction and Resuscitation Research Group, Vall Hebron Research Institute (VHIR), Campus Vall Hebron, Barcelona, Spain.

⁹ Epidemiology and Public Health Department, Hospital Universitari Vall Hebron, Campus Vall Hebron, Barcelona, Spain

¹⁰ Epidemiology and Public Health Research, Group, Vall Hebron Research Institute (VHIR), Campus Vall Hebron, Barcelona, Spain.

¹¹ Department of Pediatrics, Obstetrics and Gynecology, Epidemiology and Pub Health, Universitat Autònoma Barcelona, Barcelona, Spain.

¹² Microbiology Department, Hospital Universitari Vall Hebron, Barcelona, Spain.

¹³ Microbiology Research Group, Vall Hebron Research Institute (VHIR), Campus Vall Hebron, Barcelona, Spain

¹⁴ Department of Genetics and Microbiology, Autonomous University of Barcelona, Campus Vall Hebron, Barcelona, Spain.

¹⁵ Internal Medicine Department, Hospital Universitari Vall Hebron, Barcelona, Spain

¹⁶ Systemic Disease Research Group, Vall Hebron Research Institute (VHIR), Campus Vall Hebron, Barcelona, Spain.

¹⁷ Liver Disease Research Group, Vall Hebron Research Institute (VHIR), Campus Vall Hebron, Barcelona, Spain.

¹⁸ CIBERehd - Instituto de Salud Carlos III, Campus Vall Hebron, Barcelona, Spain

¹⁹ Clinical Laboratory Department, Hospital Universitari Vall Hebron, Barcelona, Spain

²⁰ Bioinformatics and Statistics Group, University of Barcelona, Barcelona, Spain

²¹ Immunology Division, Bellvitge University Hospital, Hospitalet de Llobregat, Barcelona, Spain

²² Statistics and Bioinformatics Unit, Vall Hebron Research Institute (VHIR), Campus Vall Hebron, Barcelona Spain,

²³ Immunology Group, Health Sciences Research Institute Germans Trias Pujol (IGTH), Badalona, Barcelona, Spain

NOTE: This preprint reports new research that has not been certified by peer review and should not be used to guide clinical practice.

²⁴ Immunology Department, Hospital Universitari Germans Trias Pujol, Badalona (Barcelona), Spain

Campus Vall Hebron postal address: Passeig Vall d'Hebron 119-129, 08035 Barcelona, Spain.

The Immunology Group at Vall d'Hebron Hospital are part of the Universitat Autònoma de Barcelona – Focis Center of Excellence (www.focisnet.org)

*These authors share first authorship

** These authors contributed equally to this work and share last authorship

Correspondence:

Ricardo Pujol-Borrell MD, PhD

Vall d'Hebron Institute of Oncology

Campus Vall Hebron

Natzaret 115-117, 08035, Barcelona, Spain

Tel. +34 932543450 Ext. 8682

Email: Ricardo.pujol@uab.cat

This study was funded by Instituto de Salud Carlos III, Madrid, Spain, grants COV20/00416, Cov20/00654 and COV20/00388 to R.P–B, ATS and JBM respectively and co–financed by the European Regional Development Fund (ERDF). DÁ–S is recipient of a doctoral fellowship from the Vall d'Hebron Research Institute, Barcelona, Spain. ASM was supported by a postdoctoral grant “Juan Rodés” (JR18/00022) from Instituto de Salud Carlos III through the Ministry of Economy and Competitiveness, Spain

Abstract

Background: Almost two years since the onset of the COVID-19 pandemic no predictive algorithm has been generally adopted, nor new tests identified to improve the prediction and management of SARS-CoV-2 infection.

Methods: Retrospective observational analysis of the predictive performance of clinical parameters and laboratory tests in hospitalised patients with COVID-19. Outcomes were 28-day survival and maximal severity in a cohort of 1,579 patients and two validation cohorts of 598 and 434 patients. A pilot study conducted in a patient subgroup measured 17 cytokines and 27 lymphocyte phenotypes to explore additional predictive laboratory tests.

Findings: 1) Despite a strong association of 22 clinical and laboratory variables with the outcomes, their joint prediction power was limited due to redundancy. 2) Eight variables: age, comorbidity index, oxygen saturation to fraction of inspired oxygen ratio, neutrophil-lymphocyte ratio, C-reactive protein, aspartate aminotransferase/alanine aminotransferase ratio, fibrinogen, and glomerular filtration rate captured most of the statistical predictive power. 3) The interpretation of clinical and laboratory variables was improved by grouping them in categories. 4) Age and organ damage-related tests were the best predictors of survival, and inflammatory-related tests were the best predictors of severity. 5) The pilot study identified several immunological tests (including chemokine ligand 10, chemokine ligand 2, and interleukin 1 receptor antagonist), that performed better than currently used tests.

Conclusions: Currently used tests for clinical management of COVID-19 patients are of limited value due to redundancy, as all measure aspects of two major processes: inflammation, and organ damage. There are no independent predictors based on the quality of the nascent adaptive immune response. Understanding the limitations of current tests would improve their interpretation and simplify clinical management protocols. A systematic search for better biomarkers is urgent and feasible.

INTRODUCTION

Two years after the onset of the coronavirus disease (COVID-19) pandemic, the clinical, laboratory, and imaging features of patients with severe acute respiratory syndrome coronavirus 2 (SARS-CoV-2) infection have been widely described[1–5]. The wide clinical spectrum of COVID-19 became obvious during the first wave, and although the effect of inoculum size should be considered [6,7], variation has been mainly attributed to host factors, as variants of concern only appeared later [8]. The analysis of the first wave has obvious advantages for the identification of host factors and their biomarkers. Among host factors that affect the severity of illness, age, sex, genetic background, immunological status and prior immunity to coronaviruses[9] have been evaluated. Gene mutations of the interferon (IFN) pathway play a clear role in a small proportion of cases[10], and polymorphisms of several genes associated with immune response have been identified in genome-wide association studies[11,12]; however, to date, the genotypes that convey a risk of severe COVID-19 have not been defined in a way that is practically applicable for prediction in clinical practice.

Reports originating from the analysis of electronic health records have confirmed the predictive value of clinical laboratory tests usually associated with poor outcomes in other infections (i.e., blood cell counts, acute-phase reactants [APRs], and coagulation factors)[13–21] but none of the proposed predictive algorithms combining demographic, clinical, and laboratory data have been widely adopted. In small case series, the state of the immune system in COVID-19 patients has been analysed using the latest tools[22–28] leading to the detection of deep perturbations in the immune system. However, inferences of the effect of these perturbations in the efficiency of the immune response and their clinical consequences are not simple and, to date, no new predictive tests have been validated or added to the clinical laboratory toolbox for COVID-19 management.

We report a retrospective analysis of data from a cohort of 1,579 consecutive patients treated at the Vall d'Hebron University Hospital (HUVH) during the first wave of COVID-19 in Barcelona. We validated the main conclusions by comparison with cohorts from two other academic hospitals that belong to the same healthcare provider (the Catalan Institute of Health [ICS]) in Catalonia, Spain.

We conducted this retrospective observational study assuming that the predictive power of clinical laboratory tests had not been fully exploited, with the main objective of improving their interpretation. A secondary objective was to explore the predictive value of a selection of robust immunological tests that might identify an early dysregulated immune response associated with severe COVID-19.

PATIENTS AND METHODS

The database of the HUVH cohort was obtained by merging data sets from the Infectious Disease, Epidemiology and Clinical Laboratory departments. Consecutive patients aged ≥ 18 years with a SARS-CoV-2 positive polymerase chain reaction (PCR) from any respiratory sample, hospitalised in HUVH between 10 March and 29 April 2020 were included in the study (see Tables 1 and 1S). This COVID-19 HUVH cohort consisted of 1,579 patients (Fig 1). All patient medical records included the number of symptoms, days from symptom onset (DFSO), initial assessment of vital signs, comorbidities, length of hospital stay (LOS), intensive care unit (ICU) admission, oxygen supplementation and supportive ventilation requirements, outcome during the hospitalisation and results from clinical laboratory tests. Data were censored on the date of discharge, death, or 28 days after admission, whichever occurred first. The outcome of all patients discharged before the 28th day was ascertained through a review of the primary care electronic health record notes.

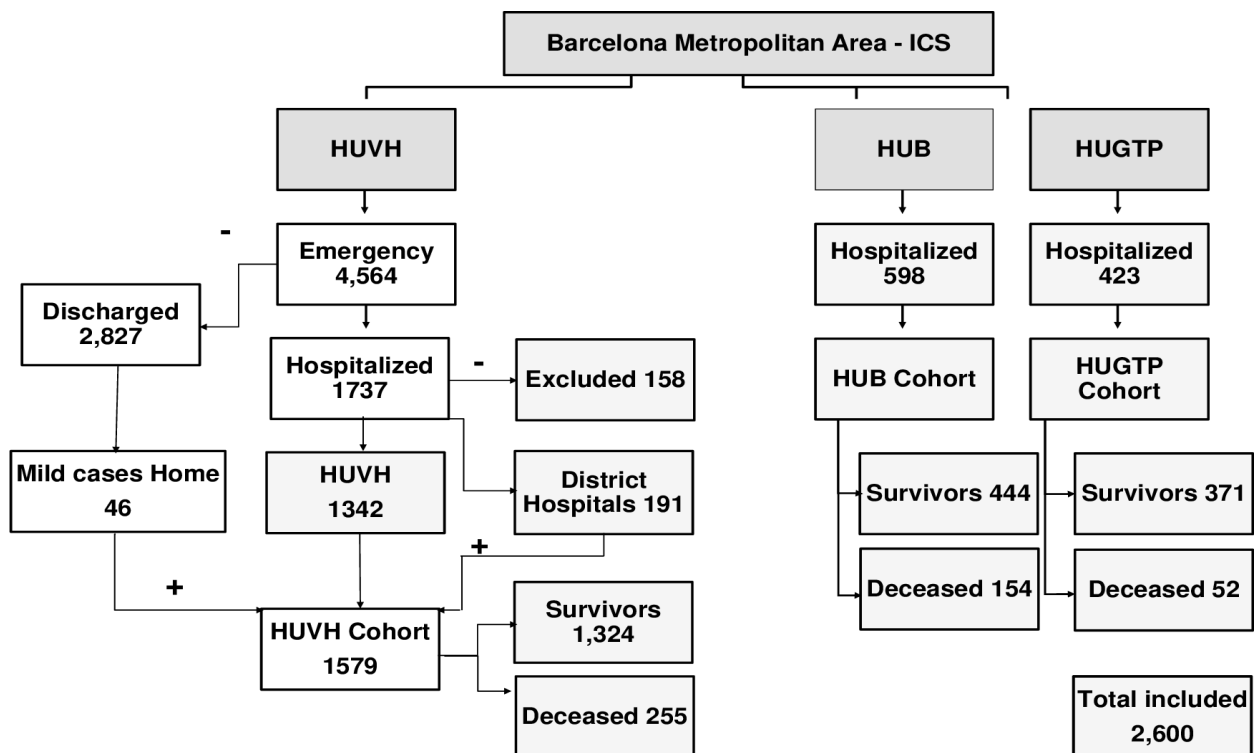


Fig 1. Selection of patients for the cohorts from Vall d'Hebron University Hospital (HUVH), Bellvitge University Hospital (HUB), and Germans Trias i Pujol University Hospital (HUGTP). All patients were confirmed by polymerase chain reaction (PCR) to have coronavirus disease (COVID-19). The details of the excluded patients are provided in Table 1S. The data from HUVH corresponds to patients who were admitted to the emergency division between 10 March and 29 April 2020; to HUGTP between 17 March and 12 May 2020; and to HUB between 16 March and 23 September 2020. The number of deceased patients corresponds to the 28-day follow-up period. The HUB and HUGTP cohorts include only hospitalised patients.

Comorbidities were classified as 1) cardiovascular disease and/or hypertension, 2) chronic lung disease, 3) diabetes, 4) neurological disease, 5) chronic kidney disease, 6) active non-terminal malignancy, 7) obesity, and 8) chronic liver disease. Each comorbidity was assigned value of 1, and a global comorbidity index (1 to 8) was generated. The clinical severity category was assigned as the maximal score attained during hospitalisation, using a simplified version of the World Health Organization (WHO) 10-point COVID-19 disease clinical progression score[29] as follows: 1) Mild, no activity limitations or not requiring hospitalisation; 2) Moderate, hospitalised, not requiring high-flow oxygen therapy or ventilation support; 3) Severe, hospitalised requiring high-flow oxygen therapy or ventilation support; and 4) Deceased, those who died before day 28 of hospitalisation. These categories correspond to the WHO scores 1–3, 4–5, 6–9, and 10, respectively. For some analyses, the mild and moderate categories were combined into a non-severe category, and the severe and deceased categories were combined into a severe category.

The validation cohorts from the Bellvitge University Hospital (HUB) and the Germans Trias i Pujol University Hospital (HUGTP) included 598 and 423 patients, respectively, and, together with the HUVH cohort, at total of 2,600 patients were included in the analysis.

Outcomes

Final outcomes for comparison included survival vs. death, and maximum clinical severity. For the validation cohorts the only available outcome was survival for 28 days (survivors) and death (deceased).

Clinical laboratory tests

Detection of SARS-CoV-2 was first performed by an in-house PCR assay with primers and probes from 2019-nCoV CDC PCR panel, using the One-Step RT-PCR kit (Qiagen, Germany). When commercial assays became available, a real-time multiplex RT-PCR assay (Allplex™ 2019-nCoV Assay, Seegene, South Korea) was used. The laboratory data set at onset included Hemoglobin (Hb), WBC, Neutrophils, Lymphocytes, Monocytes, Eosinophils, Basophils, Platelets, IL-6, C-Reactive Protein (CRP), Ferritin, LDH, Fibrinogen, D-dimer, Prothrombin time INR, AST, ALT, Bilirubin direct and total, Urea, Creatinine and estimated Glomerular Filtration Rate (eGFR, National Kidney Foundation algorithm).

The clinical laboratories were equipped with Beckman Coulter (Brea, CA, USA) and Roche Diagnostics (Indianapolis, IN, USA) automatic analysers that were integrated with two TECAN (Zug, Switzerland) continuous lines and two automatic cold storage and retrieval units that ensure sample integrity. Interleukin 6 (IL-6) levels were measured in a Elycsis® Cobas analyser (Roche). Samples for assessing the predictive performance of clinical laboratory tests were taken on admission to the hospital; glomerular filtration rate (GFR) was calculated by applying the algorithm of Levey et al.[30]; additional laboratory test data for the 28-day follow-up period were available from 9,475 samples corresponding to 1,079 of the 1,579 patients in the HUVH cohort.

Immunological tests

The levels of cytokines chemokine ligand 2 (CCL2), chemokine ligand 10 (CXCL10), granulocyte-macrophage colony-stimulating factor (GM-CSF), interferon (IFN)-alpha, IFN-gamma, interleukin (IL)-10, IL-12 p70, IL-13, IL-15, IL-17A, IL-1RA, IL-2, IL-4, IL-6, IL-7, and tumour-necrosis factor (TNF), and granzyme B were measured in sera using the ELLA microfluidic platform (Biotechne®, Minneapolis, MN, USA); for sCD163 levels an enzyme-linked immunosorbent assay was used (CD163 human kit, Thermo Fisher Scientific, Waltham, MA, USA).

The Human Immune Phenotyping Consortium protocol [31,32] was adapted for the study of COVID-19 patients. The antibodies used are shown in Table 2S. Blood was collected in EDTA vacutainer tubes (BD-Plymouth, UK) and processed within 4 hours. A total of 10^5 events were acquired from each sample in most cases, using a NAVIOS EX flow cytometer (Beckman Coulter). Data were analysed with Kaluza Beckman Software v.2.1. Absolute values were generated by loading counts from the haematological analyser (XN-2000; Sysmex, Japan) parallel sample analysis.

Statistical analysis

Categorical variables were summarised as frequencies and proportions and continuous variables as means, standard deviations, and 95% confidence intervals (CIs) or medians and interquartile ranges (IQRs), depending on their distribution. Pairwise comparisons used the Mann–Whitney U-test and Kruskal-Wallis test, adjusted for the false-discovery rate (FDR), where indicated (using the Benjamini and Hochberg, or Bonferroni method, as indicated). C-reactive protein (CRP), IL-6, ferritin, and D-dimer values were logarithmically transformed. A threshold of 30% of laboratory missing data was used as the exclusion criteria for data analyses. The initial oxygen saturation to fraction of inspired oxygen ratio (SpO₂/FiO₂) value while breathing room air was available for a subset of 827 patients. The data from these patients were either analysed separately, or when this parameter was included in a general analysis and resulted in a reduction the number of subjects, this was indicated in the reporting of the results.

Bivariable logistic regression was used to calculate the age-adjusted odd ratios (OR) and effect size (Z score) of each variable. Multivariable logistic regression was used to calculate the predictive power of different combinations of variables. Correlation among variables was analysed using the

non-parametric Spearman test. For analysis of follow-up data of the HUVH cohort, locally weighted smoothing (LOESS) was applied to clinical laboratory variables to visualise the relationship between the mean and CI of each variable, time and 28-day outcome, as described by Abers et al.[1]. To assess the performance of each clinical laboratory test, the receiver-operating characteristic (ROC) curve and the corresponding area under the curve (AUC) values were calculated, using age as a variable for comparison. In addition, random forest simulation and principal component analysis (PCA) were performed to further compare the influence of the laboratory and clinical variables on the outcomes in each hospital dataset.

Statistical tests were 2-sided and used a significance threshold of at least $p < 0.05$. R, version 4.1.0 (The R Foundation for Statistical Computing, Vienna, Austria) and Prism 9® (GraphPad, San Diego, CA, USA) packages were used for all analyses. Statistical analysis was conducted by the Statistics and Bioinformatics Unit (UEB), Vall d'Hebron Hospital Research Institute, and by co-authors PC-E and RP-B under the supervision of UEB.

Ethical review

This project was approved by the institutional ethics board of the three institutions (HUVH, HUGTP, and HUB) which waived the requirement for individual informed consent (protocol R(AG)242/2020). In the HUVH cohort, residual sera samples were transferred to the Vall d'Hebron University Hospital Biobank (PT17/0015/0047) part of the Carlos III Institute of Health network of biobanks (Number C.0006012).

RESULTS

Overall clinical features of HUVH cohort

The HUVH cohort included 1,579 PCR-confirmed COVID-19 patients with a median age of was 62 years (IQR: 50–75 years), of whom 255 (16.1%) died during the first 28 days after hospitalisation (Fig 2A). Eight hundred eighty (55.7%) patients were male. The proportion of males was higher (58.0%) among the deceased patients and this proportion was significantly higher than the proportion of males in the Barcelona metropolitan area at the time (47.5% male, $p < 0.001$).[33,34] A total of 236 (14.9%) patients were admitted to the ICU with a 28-day case fatality rate of 13.9%[35].

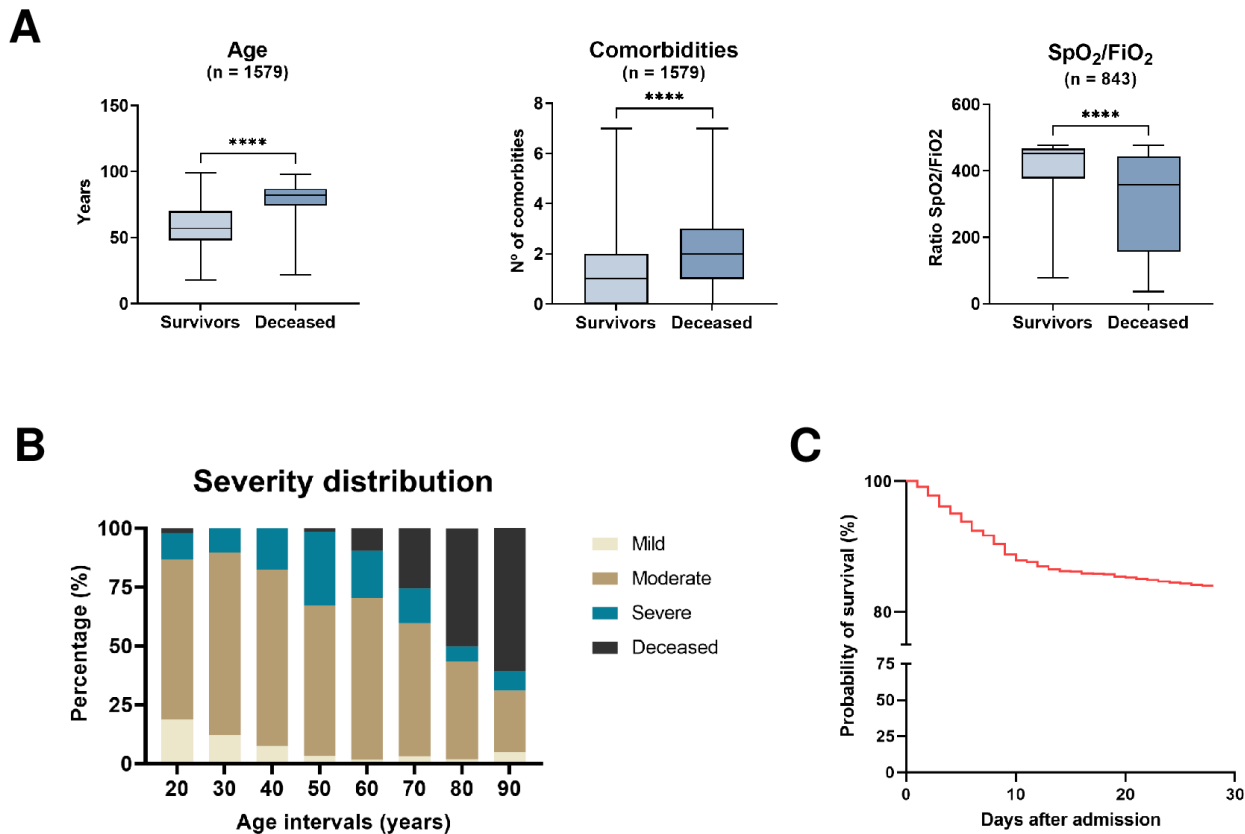


Fig 2. The structure and outcomes of the Vall d'Hebron University Hospital cohort. (A) Left panel, age distribution of the survivors and that of the deceased is markedly different (median [IQR]: 62 years [50–75 years] vs. 82 years [74–87 years], $p < 0.001$) as are comorbidities (central panel) and SpO₂/FiO₂ (right panel). (B) Distribution of the patients in the HUVH cohort among the four severity categories, based on the World Health Organization criteria (described in the Material and Methods section). The number of patients in the mild category is small ($n=71$) as only patients with bilateral pneumonia or severe associated pathologies were hospitalised during this period of the pandemic. (C) Survival after admission: this graph highlights mortality during the initial 10 days, with a high number of patients older than 80 years dying in the initial 3–4 days (see text “Overall Clinical Features of HUVH cohort”). HUVH, Vall d'Hebron University Hospital.

The presenting symptoms are shown in Table 1. Of note, digestive symptoms were more frequent in survivors (31.1% vs. 20.0%, $p < 0.001$). Cardiovascular and/or hypertension, chronic lung disease, diabetes, neurological disease, chronic kidney disease, and active non-terminal malignancy were associated to decreased 28-day survival, but not chronic liver disease nor obesity. The comorbidity index was significantly higher in deceased patients and patients with severe disease than in survivors and patients with non-severe disease. Each comorbidity added 10% mortality risk up to an index of 4 (Table 3S)

Table 1. Summary of the clinical and demographic features of HUVH cohort

		Survivors vs deceased				Non-severe vs severe		
		Patients n (%)	Survivors n (%)	Deceased n (%)	<i>p</i> -value	Non-severe n (%)	Severe n (%)	<i>p</i> -value
All		1579 (100)	1324 (83.9)	255 (16.1)	NA	1040 (63.8)	539 (34.1)	NA
Female		699 (44.3)	592 (44.7)	107 (42.0)	0.449	491 (47.2)	208 (38.6)	0.001
Male		880 (55.7)	732 (55.3)	148 (58.0)		549 (52.8)	331 (61.4)	
ICU		236 (14.9)	203 (15.3)	33 (13.9)	0.4	1 (0.1)	235 (43.6)	1.612E-126
		Median (IQR)	Median (IQR)	Median (IQR)	<i>p</i> -value	Median (IQR)	Median (IQR)	<i>p</i> -value
Age, years		62 (50–75)	57 (48–70)	82 (74–87)	7.26E-81	58 (47–71)	70 (54–82)	2.4872E-29
DFSO		7 (4–9)	7 (5–10)	5 (2–7)	9.40E-19	7 (5–10)	6 (3–8)	2.9561E-14
LOS		7 (2–20)	7 (2–24)	7 (4–11)	0.4226	5 (2–10)	14 (6–36)	1.5748E-44
Disease duration, days		15.0 (10–28)	15 (10–34)	12 (9–18)	4.45E-11	13 (9–21)	22 (11–43)	1.4952E-17
Clinical Presentation		n (%)	n (%)	n (%)	<i>p</i> -value	n (%)	n (%)	<i>p</i> -value
General	Fever	1314 (83.2)	1132 (85.4)	199 (75.3)	0.040	886 (85.2)	438 (81.3)	0.051
Respiratory	Upper respiratory symptoms (only)	94 (5.9)	85 (6.5)	9 (3.4)	0.063	69 (6.5)	25 (4.6)	0.118
	Lower respiratory symptoms	1351 (85.6)	1148 (86.7)	203 (79.6)	0.020	892 (85.8)	459 (85.2)	0.763
	Pneumonia	1524 (96.5)	1271 (96.0)	253 (99.2)	0.008	989 (95.1)	535 (99.3)	3.62E-06
Digestive	All	491 (31.1)	440 (33.2)	51 (20.0)	1.182E-05	353 (33.9)	138 (25.6)	7.11E-04
Comorbidities		n (%)	n (%)	n (%)	<i>p</i> -value	n (%)	n (%)	<i>p</i> -value
	Cardiovascular & hypertension	712 (45.1)	508 (38.4)	204 (80.0)	8.534E-37	394 (37.9)	318 (59.0)	1.463E-15
	Chronic lung disease	278 (17.6)	198 (15.0)	80 (31.4)	5.134E-09	145 (13.9)	133 (24.7)	2.143E-07
	Diabetes	293 (1850.0)	223 (16.8)	70 (28.3)	1.90E-05	170 (16.3)	123 (22.8)	0.002
	Neurological disease	227 (14.4)	156 (11.8)	71 (27.8)	1.29E-09	121 (11.6)	106 (19.7)	2.89E-05
	Chronic kidney disease	134 (8.5)	79 (6)	55 (21.6)	1.03E-13	55 (5.3)	79 (14.7)	9.101E-10
	Active non-terminal malignancy	113 (7.2)	62 (4.7)	51 (20.0)	1.10E-15	41 (3.9)	72 (13.4)	4.197E-11
	Obesity	261 (16.5)	227 (17.3)	34 (12.8)	0.85	145 (13.9)	116 (21.5)	2.00E-04
	Chronic liver disease	61 (3.9)	48 (3.7)	13 (4.9)	0.139	37 (3.6)	24 (4.5)	0.409
Comorbidity index*		Median (IQR)	Median (IQR)	Median (IQR)	<i>p</i> -value	Median (IQR)	Median (IQR)	<i>p</i> -value
		1 (0-2)	2 (1-3)	2 (1-3)	2.2961E-38	1 (0-2)	2 (1-3)	1.0118E-26

* The breakdown of patients by comorbidity index is in Table 1S.

Exact *p*-values from the Mann–Whitney U test, Significance should be considered for $p \leq 0.001$ after Bonferroni. F, female; M, male; DFSSO, days from symptom onset; LOS, length of stay; significant *p* values in bold.

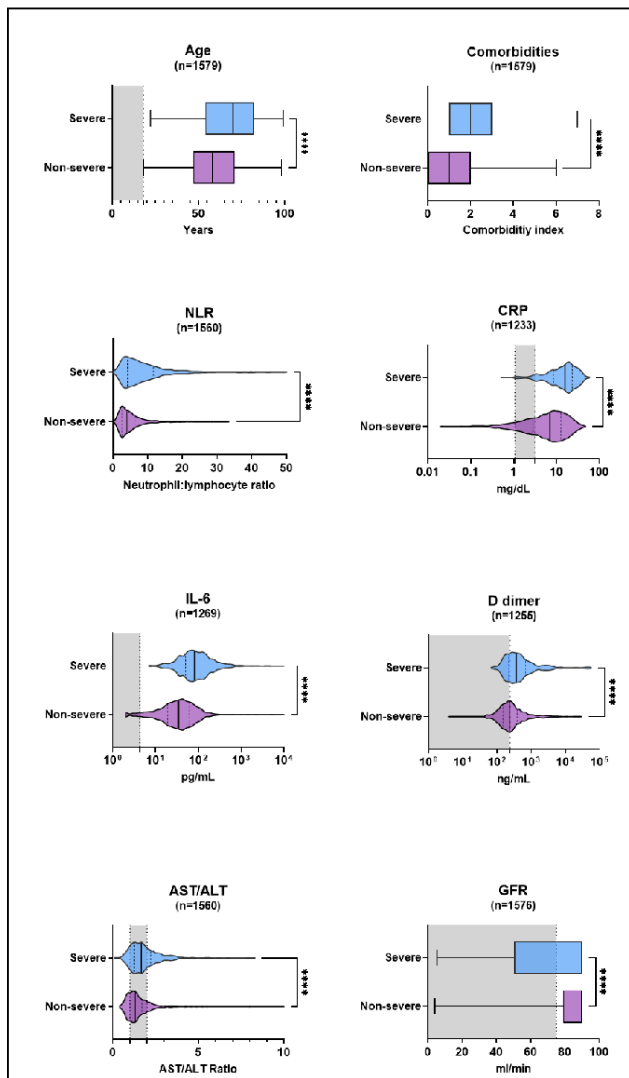
The distribution of disease severity was as follows, 71 (4.5%), 969 (61.4%), 284 (17.9%), and 255 (16.1%) in the mild, moderate, severe, and deceased categories, respectively. The age of patients increased with increasing disease severity category, except between the moderate and severe disease groups (Fig 2B and Table 4S). The LOS increased with disease severity for the three initial disease severity categories but was shorter among the deceased because 24.9% of the deceased patients died during the initial 4 days of hospitalisation (Fig 2C). The median disease duration was 18 days (IQR: 10–18 days) and was progressively longer with increasing disease severity (Table 5S). Age had a strong effect on mortality: for patients in the age groups 50–59, 60–69, 70–79, 80–89 and >90 years, with 28-day case fatality rates of 1.82%, 10.9%, 26.4%, 49.7% and 60.6% respectively.

In the dichotomous disease severity grouping, there were 1,040 and 539 patients in the non-severe and severe categories, respectively. Deceased patients accounted for 43.7% of the severe category. The disease severity was significantly associated with age, DFSO, LOS, disease duration, and comorbidities other than chronic liver disease. Disease severity was greater in males than in females, but after adjusting for multiple comparisons the statistical significance was moderate compared with the other statistically significant associations (exact $p=0.001$, after Bonferroni's correction $p=0.03$) (Table 1).

Predictive power of current clinical laboratory test

The exploratory statistical analysis of the HUVH cohort revealed that, despite the strong association of 22 of the 30 variables with 28-day outcomes (Fig 3 and Tables 2 and 5S), the predictive power of the combined variables was limited and appeared to rely disproportionately on age, a non-laboratory variable (Table 3). Further analyses described in the supplementary section “Sequence of statistical biomarker analyses” were undertaken to determine the reason of this limitation, as summarised below.

Severity based analysis



Survival based analysis

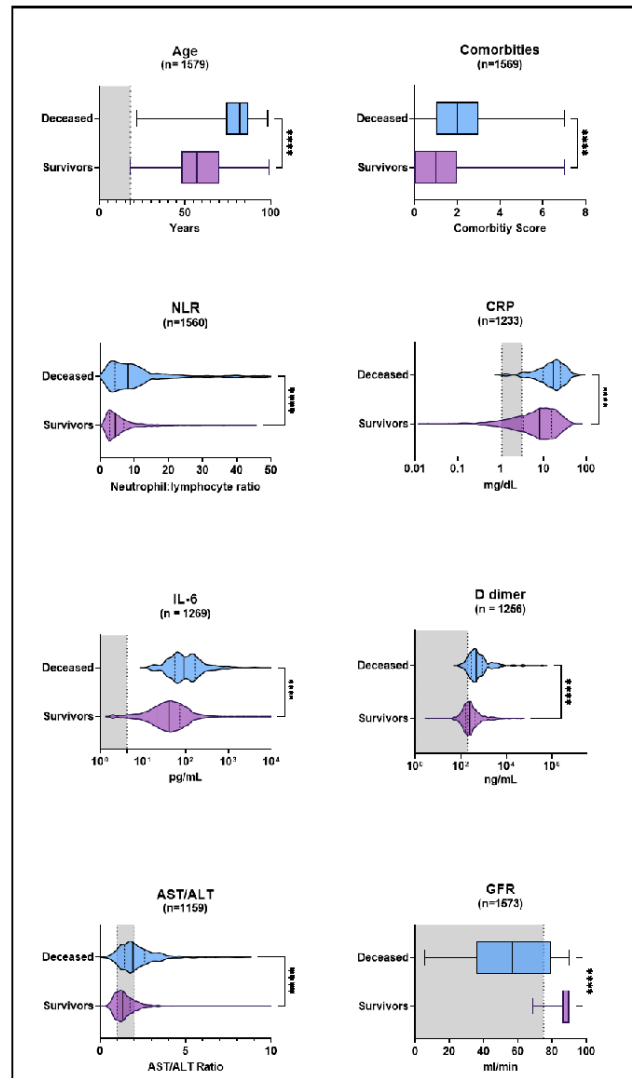


Fig 3. Univariate comparisons of a selection of clinical laboratory-derived variables at admission and 28-days survival for the survival/decease and non-severe, severe outcomes in the Vall d'Hebron University Hospital cohort. N, number of cases plotted; NLR, neutrophil-to-lymphocyte ratio; CRP, C-reactive protein; AST, aspartate aminotransferase; ALT, alanine aminotransferase; GFR, glomerular filtration rate. * p < 0.05; ** p < 0.01; *** p < 0.001; **** p < 0.0001. When non-significant, the numerical p-values are given. The exact p-values are given in Table 2. The distribution of age and GFR are markedly different in the severity and survival analysis.

Table 2. Pairwise comparison of biomarkers for decease and severity outcomes, HUVH cohort

Patients, Median (IQR)	Total (n = 1579)	Survivors (n = 1324)	Non-survivors (n = 255)	p-value (exact)	Non-Severe (n = 1324)	Severe and deceased (n = 255)	p-value (exact)
Age, years, median and IQR	62 (50–75)	57 (48–70)	82 (74–87)	7.26E-81	58 (47-71)	70 (54-82)	2.49E-29
Comorbidities	1 (0-2)	2 (1-3)	2 (1-3)	2.30E-38	1 (0-2)	2 (1-3)	1.0118E-26
INFLAMMATION RELATED BIOMARKERS (IFRB)							
Blood (normal range)							
Hb (12–15 g/dL)	13.5 (12.3–14.5)	13.7 (10.7–11.9)	12.6 (11.4–13.8)	4.95E-15	13.7 (12.5-14.6)	13.1 (12.0-14.3)	5.64E-09
WBC (4–11 10 ⁹ /L)	6.5 (5.0–8.8)	6.5 (5.0–8.2)	7.5 (5.32–10)	1.51E-05	6.36 (4.95-8.10)	7.39 (5.29-10.4)	1.26E-10
Neutrophils, % (40–80)	76.1 (68–83.2)	74.8 (68.3–81.0)	82.9 (75.4–87.9)	1.07E-20	73.3 (65.9-79.8)	82.4 (74.3-87.6)	6.07E-39
Neutrophils (2–7 10 ⁹ /L)	4.8 (3.5–6.7)	4.7 (3.4–7.6)	6.1 (3.9–8.6)	7.18E-10	4.56 (3.33-6.23)	5.92 (4.01-8.68)	1.63E-19
Lymphocytes, % (20–50)	16 (10.5–23)	17 (12–24)	10 (7.2–17.0)	1.07E-23	18.1 (12.8-24.8)	11.6 (7.50-18.2)	8.34E-41
Lymphocytes (1.2–3.5 10 ⁹ /L)	1 (0.7–1.4)	1.1 (0.8–1.4)	0.7 (0.6–1.0)	3.69E-22	1.11 (0.82-1.50)	0.85 (0.60)	1.80E-28
Monocytes, % (2–10)	6.7 (4.8–8.8)	6.8 (5.0–8.8)	5.4 (3.6–7.80)	1.01E-10	7.20 (5.50-9.20)	5.40 (3.70-7.80)	1.92E-24
Monocytes (0.1–1 10 ⁹ /L)	0.43 (0.30–0.59)	0.44 (0.31–0.59)	0.39 (0.28–0.56)	0.013	0.45 (0.33-0.61)	0.39 (0.28-0.58)	1.02E-05
Eosinophils, % (0.0–5.0)	0.0 (0–0.3)	0.00 (0.00–0.10)	0 (0.00–0.00)	4.40E-07	0.1 (0.00-0.40)	0.00 (0.00-0.10)	1.87E-14
Eosinophils (0.0–0.5 10 ⁹ /L)	0.00 (0.00–0.01)	0.0 (0–0.01)	0 (0.00–0.00)	0.006	0.0 (0–0.03)	0.00 (0.00–0.01)	9.7144E-12
Basophils (0.0–0.2 E9/L)	0 (0.01–0.03)	0.0 (0.01–0.03)	0.02 (0.01–0.03)	0.454	0.02 (0.01–0.02)	0.02 (0.01–0.03)	0.1591
Neutrophil–Lymphocyte ratio	4.8 (3.0–7.0)	4.4 (3.2–6.7)	7.7 (4.3–12.2)	1.39E-21	4.07 (2.68-4.21)	7.07 (4.21-11.7)	4.71E-39
Platelets (140–400 10 ⁹ /L)	197 (154–251)	202 (170–286)	174 (133–227)	2.87E-07	292 (159-254)	190 (143-190)	2.63E-04
APR and related parameters							
CRP (0.03–0.5 mg/dL)	8.9 (3.8–16.6)	8.1 (3.8–15.5)	17.9 (10.2–24.5)	2.05E-19	7.07 (2.57-12.58)	15.8 (8.51-23.44)	5.99E-43
IL-6 (0.0–4.3 pg/mL)	45.1 (23.6–80.0)	41.41 (24.7–85.9)	90.5 (55.3–162.8)	1.88E-24	34.6 (19.0-61.65)	81.2 (50.1-138.0)	1.01E-55
Ferritin (25–400 ng/mL)	539 (282.5–1011.5)	527 (155.5–709.5)	671 (355–1153)	0.04	467 (251.-891.2)	724 (426.-1348.)	1.06E-12
Coagulation							
Fibrinogen (2.39–6.1 g/L)	5.1 (4.4–6)	5.2 (4.4–5.7)	4.9 (4.2–5.9)	0.04	5.06 (4.42-5.86)	5.31 (4.45-6.15)	0.0129
D-dimer (0–243 ng/mL)	263 (168–463.5)	248.5 (197.8–591.0)	477 (292.5–860.8)	4.65E-16	234 (151-389)	371 (223-692)	3.80E-20
Prothrombin time, INR (0.7–1.3)	1.1 (1.0–1.2)	1.1 (1.0–1.2)	1.1 (1.1–1.3)	9.32E-08	1.09 (1.02-1.17)	1.11 (1.04-1.23)	1.25E-05
ORGAN DAMAGE RELATED BIOMARKERS (ODRB)							
SpO2/FiO2	448 (354-462)	452 (377-465)	358 (156-443)	5.55E-22	457 (438-467)	369 (230-448)	8.58E-44
Liver function tests							
AST (12–50 IU/L)	40 (30–60)	39 (26.0–49.5)	44.5 (31–68)	0.01	38 (28-55)	45 (33-68)	6.55E-11
AST/ALT (<1.5)	1.39 (1.06-1.88)	1.3 (1.0-1.8)	1.9 (1.4-2.6)	6.06E-31	1.3 (1-1.71)	1.67 (1.24-2.21)	2.97E-24
Bilirubin, Direct (0.1–0.57 mg/dL)	0.30 (0.24–0.38)	0.30 (0.24–0.37)	0.35 (0.27–0.46)	8.37E-05	0.29 (0.24-0.36)	0.32 (0.26-0.43)	1.34E-05
Bilirubin, Total (0.3–1.2 mg/dL)	0.57 (0.45–0.74)	0.57 (0.44–0.73)	0.63 (0.47–0.85)	0.03	0.56 (0.45-0.73)	0.58 (0.44-0.81)	0.185
Kidney function tests							
Urea (17–42 mg/dL)	35 (25–51)	32 (24.0–55.0)	58 (42–87)	8.77E-47	31 (24-44)	46 (31.8-72.3)	2.23E-31
Creatinine (0.67–1.17 mg/dL)	0.80 (0.60–0.97)	0.79 (0.65–0.94)	1.01 (0.78–1.36)	2.20E-20	0.79 (0.64-0.95)	0.92 (0.74-1.29)	2.48E-23
GFR (>75 mL/min/1.73m ²)	88.5 (67.8–90.0)	90.0 (76.4–90.0)	56.9 (35.9–79.5)	2.37E-101	90 (78.9-90)	76.3 (50.3-90)	1.42E-37

AST, Aspartic Amino Transferase; ALT, Alanine Amino Transferase; CRP; C Reactive Protein; GFR, Glomerular Filtration Rate; Hb, Hemoglobin; NLR, Neutrophil Lymphocyte Ratio; NC, not calculated, SpO2/FiO2, Oxygen saturation to fraction of inspired oxygen ratio; WBC, White Blood cell Count.

Table 3. Classification tables from multiple logistic regression including different sets of variables for survival vs decease or severe vs non-severe as outcome.

Predicted outcome, 19 clinical and laboratory variables* for survival versus decease				
Classification table	Predicted survival	Predicted decease	Total	% Correctly classified
Observed Survival	357	8	365	97.81
Observed Decease	21	25	46	54.35
Total	378	33	411	92.94
Predicted outcome, 19 clinical and laboratory variables* severe versus non-severe				
Classification table	Predicted non-severe	Predicted severe	Total	% Correctly classified
Observed non-severe	244	26	270	90.37
Observed severe	64	77	141	54.61
Total	308	103	411	78.10
Predicted outcome, 16 non-clinical variables** for survival versus decease				
Classification table	Predicted survival	Predicted decease	Total	% Correctly classified
Observed survival	356	9	365	97.53
Observed decease	30	16	46	34.78
Total	386	25	411	90.51
Predicted outcome, 16 non-clinical variables** for severe versus non-severe				
Classification table	Predicted non-severe	Predicted severe	Total	% Correctly classified
Observed non-severe	245	25	270	90.74
Observed severe	59	82	141	58.16
Total	304	107	411	79.56
Predicted outcome, 15 non-clinical variables for survival versus decease (no SpO2/FiO2)***				
Classification table	Predicted survival	Predicted decease	Total	% Correctly classified
Observed survival	897	9	906	99.01
Observed decease	68	20	88	22.73
Total	965	29	994	92.25
Predicted outcome, 15 non-clinical variables for severe versus non-severe (no SpO2/FiO2)***				
Classification table	Predicted non-severe	Predicted severe	Total	% Correctly classified
Observed non-severe	691	49	740	93.38
Observed severe	162	92	254	36.22
Total	853	141	994	78.77

*The 19 variables included were age, gender, comorbidity index, SpO2/FiO2, Hb, Neutrophil %, Lymph %, monocyte %, eosinophils %, NLR, Platelets, CRP, IL-6, D-dimer, ferritin, fibrinogen, prothrombin time INR, AST/ALT ratio and GFR. ** The 16 variables included were the same minus for age, sex, and comorbidities. *** The 15 variables were the same minus for age, sex, comorbidities and, SpO2/FiO2.

Classification tables using different sets of variables show that, the despite good ROC curves and overall high proportion of correctly classified cases, their power in predicting poor outcomes, either decease or severe disease, is under the 60%. Prediction it is very dependent on age and, among biomarkers, on SpO2/FiO2 as seen comparing the different tables using 17 and 16 non-clinical

variables. It should be noticed that laboratory variables, even without SpO₂/FiO₂, are better for predicting severity than deace. When SpO₂/FiO₂ is excluded (16 variables) the % of correctly classified drops even if the number of observations was increase to the double. Analyses with the reduced set of eight variables i.e., age, comorbidities, SpO₂/FiO₂, NLR, CRP, AST/ALT, fibrinogen and GFR, gave similar results confirming the redundancy of the variables (data not shown). For more details see tables in xlsx format, “multiple logistic regression by deace” and “multiple logistic regression”.

Improving the interpretation of biomarkers

The white blood cell differential counts showed marked imbalance due to an approximately 250% reduction in the lymphocyte count and a 20–30% increase in the neutrophil count. At the individual level, the reduction of lymphocytes was disproportionate to the increase in neutrophils.

The APRs had a broad range of variation e.g., >10,000 and 50-fold for IL-6 and CRP, respectively, and in most patients the values were out of the normal range, while the aspartate aminotransferase/alanine aminotransferase (AST/ALT) ratio and kidney function test results were only moderately altered and often remained within the normal range.

Multiple correlation (Fig 4), univariate age-adjusted logistic regression (Table 4), multivariable logistic regression analyses (Table 3) and examining their respective shifts from the normal range (Table 6S), suggested that these variables could be classified into three broad categories, clinico-demographic (CD), including age, sex and the comorbidity index; inflammation related biomarkers (IFRB) including blood cell counts, levels of APRs, and coagulation factors; and organ damage-related biomarkers (ODRB), including liver and kidney function tests and SpO₂/FiO₂. These analyses revealed that the neutrophil-lymphocyte ratio (NLR) and the AST/ALT ratio captured most of the predictive value of lymphocyte and neutrophils variations and of liver function test variations, respectively, and that SpO₂/FiO₂ conveyed much of the predictive power of the ODRBs (see supplementary text “Sequence of statistical biomarker analysis”)

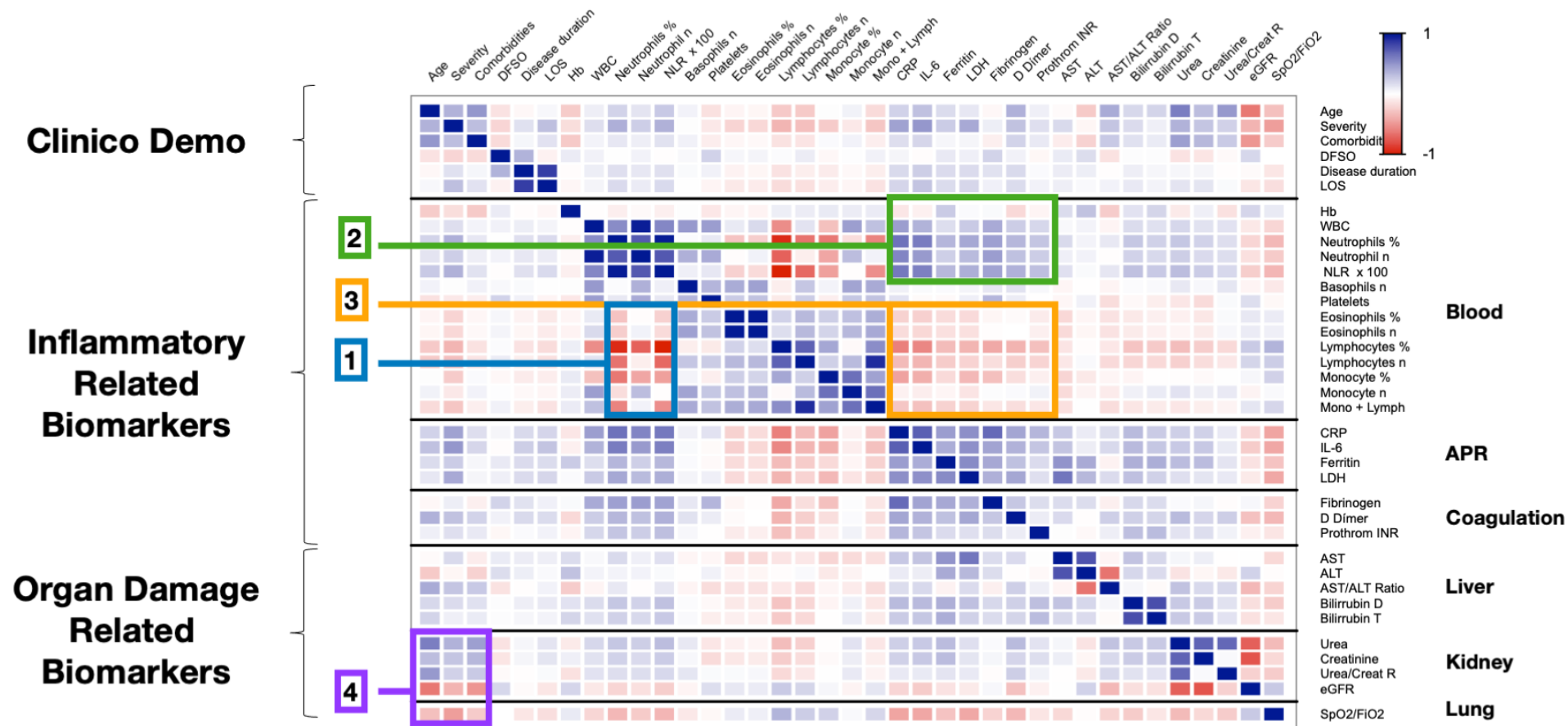


Fig 4. Overall correlograms of selected data on demographics and clinical laboratory variables that were organised in categories. [1] The blue rectangle highlights the negative correlation between neutrophils and the cluster of lymphocytes, monocytes, and eosinophils. [2] The green rectangle highlights the blood cell variables that correlate positively with the acute-phase reactants (APRs) and coagulation factors. [3] The orange rectangle highlights the negative correlation between lymphocytes, monocytes, and eosinophils with APRs and coagulation factors. [4] The magenta rectangle highlights the correlations between kidney function and the disease severity, comorbidities, SpO₂/FiO₂, and disease duration. The cells following the diagonal highlights the seven families of variables: demographics/clinical, myeloid cells, lymphocytes/mononuclear cells, APRs, coagulation, liver function test, and kidney function test, which show the expected strong correlations among themselves. The thick lines between rows separate the main categories. APR, acute-phase reactants; SpO₂/FiO₂, oxygen saturation/fraction of inspired oxygen; DFSO, days from symptom onset; LOS, length of stay; NLR, neutrophil-to-lymphocyte ratio; CRP, C-reactive protein; AST, aspartate aminotransferase; ALT, alanine aminotransferase; eGFR, estimated glomerular filtration rate.

Table 4. Univariate age adjusted logistic regression for 28-days survival/decease and non-severe/severe outcomes

28d decease outcome age adjusted						28 maximal severity age adjusted				
Variables	Odds Ratio	CI	Z value	Pr(> z)	Z value Rank	Odds Ratio	CI	Z value	Pr(> z)	Z value Rank
IL-6 (pg/mL)	2.59	2.06-3.31	7.84	<0.001	1	12.24	8.24-18.56	12.10	<0.001	1
CRP (mg/dL)	3.20	2.38-4.41	7.40	<0.001	2	9.55	6.47-14.40	11.06	<0.001	2
SpO2/FiO2 ratio	0.99	0.99-1.00	7.05	<0.001	3	0.99	0.98-0.99	10.17	0.001	4
Neutrophils (%)	1.06	1.04-1.08	6.38	<0.001	4	1.19	1.14-1.23	10.76	<0.001	3
NLR x 100	1.08	1.06-1.11	6.33	<0.001	5	1.13	1.10--1.16	9.87	0.001	5
Monocytes (%)	0.86	0.81-0.90	6.20	<0.001	6	0.86	0.83-0.89	7.89	<0.001	8
Neutrophils (10 ⁹ /L)	1.14	1.09-1.19	5.74	<0.001	7	1.19	1.14-1.23	8.86	<0.001	7
GFR (mL/1.73 m ²)	0.98	0.97-0.99	5.44	<0.001	8	0.98	0.97-0.98	6.94	<0.001	11
Lymphocytes (%)	0.95	0.92-0.97	5.04	<0.001	9	1.03	1.03-1.04	9.79	<0.001	6
WBC (10 ⁹ /L)	1.11	1.06-1.16	4.82	<0.001	10	1.14	1.01-1.18	7.29	<0.001	9
AST/ALT ratio	1.49	1.26-176	4.74	<0.001	11	1.53	1.32-1.80	5.47	<0.002	13
D dimer (ng/mL)	1.51	1.26-1.83	4.35	<0.001	12	2.60	1.92-3.56	6.05	<0.001	12
Creatinine (mg/dL)	1.32	1.14-1.53	3.68	<0.001	13	1.39	1.20-1.65	4.02	<0.001	16
Lymphocytes (10 ⁹ /L)	0.51	0.35-0.73	3.61	<0.001	14	0.41	0.32-0.52	6.95	<0.001	10
Ferritin (ng/mL)	1.43	1.12-1.85	2.85	0.004	15	1.00	1.000-1.001	5.42	<0.001	14
Eosinophils (%)	0.63	0.45-0.85	2.79	0.005	16	0.62	0.49-0.76	4.35	<0.001	15
Hb (g/dL)	0.89	0.81-0.98	2.41	0.016	17	1.12	1.04-1.19	3.23	0.001	17
Eosinophils (10 ⁹ /L)	0.02	0.00-0.62	2.07	0.039	18	0.04	0.003-0.360	2.67	0.007	18
Monocytes (10 ⁹ /L)	0.72	0.45-1.07	NA	0.127	NA	0.74	0.51-1.04	1.66	0.097	20
Platelets (10 ⁹ /L)	1.00	1.00-1.00	NA	0.203	NA	1.00	0.997-1.000	1.80	0.070	19

AST, Aspartic Amino Transferase; ALT, Alanine Amino Transferase; CRP, C Reactive Protein; GFR, Glomerular Filtration Rate; Hb, Hemoglobin; NLR, Neutrophil Lymphocyte Ratio; NC, not calculated, WBC, White Blood cell Count.

Applying this classification to assess variable performance using ROC curve analysis (Table 5) showed that the CD and ODRB variables performed moderately better for predicting survival, while the IFRB variables were better for predicting disease severity and in distinguishing between moderate and severe disease (Fig 5A and Table 3). The strong influence of age was more evident in the analysis of survival curves (using Youden index as cut-off, Table 5) in which the hazard ratio (HR) for age under or above 60 years was 32, while the next highest HR was GFR with HR of 9.3. The predictors of disease severity in descending order were age, GFR, urea, IL-6, D-dimer, and comorbidities (Fig 5B). The predictive power of both the ODRB and IFRB variables was maintained in the logistic regression analysis after adjusting for age (Table 4) or reduced by ROC analysis of age interval stratified values (Table 7S). However, the random forest simulation further confirmed that age was the single best predictor of outcome, and that the combination of all variables was only partially additive (Table 8S).

Table 5. ROC curve analysis as for clinical laboratory test performance comparison for survival/decease and non-severe/severe outcomes.

Decease Outcome				
Variable	AUC	CI	<i>p</i>	YOUDEN for Hazard Ratios cut off
Age	0.87	0.85-0.89	0.001	>60.50
Comorbidities	0.75	0.72 -0.78	5.95E-25	>1.50
GFR	0.80	0.77-0.83	2.45E-53	< 87.30
IL-6	0.77	0.73-0.81	5.24E-26	> 50.50
AST/ALT	0.73	0.69-0.77	6.08E-31	> 1.64
SpO2/FiO2	0.73	0.70-0.78	1.79E-43	< 439.50
CRP	0.73	0.70-0.78	1.44E-20	>11.13
D-dimer	0.73	0.69-0.77	7.42E-20	> 353.00
Creatinine	0.71	0.67-0.74	4.35E-25	> 1.12
Lymphocyte %	0.69	0.65-0.73	1.18E-21	< 12.05
NLR	0.69	0.65-0.73	1.33E-21	>6.85
Neutrophil %	0.69	0.65-0.73	1.61E-43	> 82.15
Hb	0.65	0.62-0.69	5.67E-09	< 13.45
Monocytes	0.63	0.59-0.67	5.05E-11	< 6.65
Prothrombin time (INR)	0.61	0.56-0.65	1.37E-07	> 1.21
Platelets	0.60	0.56-0.64	9.94E-07	< 162.50
Eosinophils %	0.59	0.55-0.62	1.32E-5	< 0.15
Ferritin	0.57	0.51-0.62	0.019	> 668.00
Severity outcome				
IL6	0.78	0.75-0.80	8.65E-56	NC
SpO2/FiO2	0.77	0.74-0.81	1.79E-43	NC
CRP	0.75	0.71-0.77	5.77E-43	NC
NLR	0.71	0.68-0.73	1.74E-41	NC
GFR	0.69	0.65-0.71	1.69E-33	NC
Age	0.67	0.64-0.70	2.55E-29	NC
D-dimer	0.67	0.63-0.69	2.63E-20	NC
Monocytes %	0.66	0.62-0.68	1.92E-24	NC
AST/ALT	0.66	0.62-0.68	2.97E-24	NC
Comorbidity	0.65	0.62-0.68	5.95E-25	NC
Ferritin	0.64	0.60-0.67	1.08E-12	NC
Eosinophils %	0.61	0.57-0.63	3.14E-12	NC
Hb	0.59	0.55-0.62	5.67E-09	NC
Monocytes n	0.57	0.53-0.59	1.02E-05	NC

AST, Aspartic Amino Transferase; ALT, Alanine Amino Transferase; CRP; C Reactive Protein; GFR, Glomerular Filtration Rate; Hb, Hemoglobin; NLR, Neutrophil Lymphocyte Ratio; NC, not calculated.

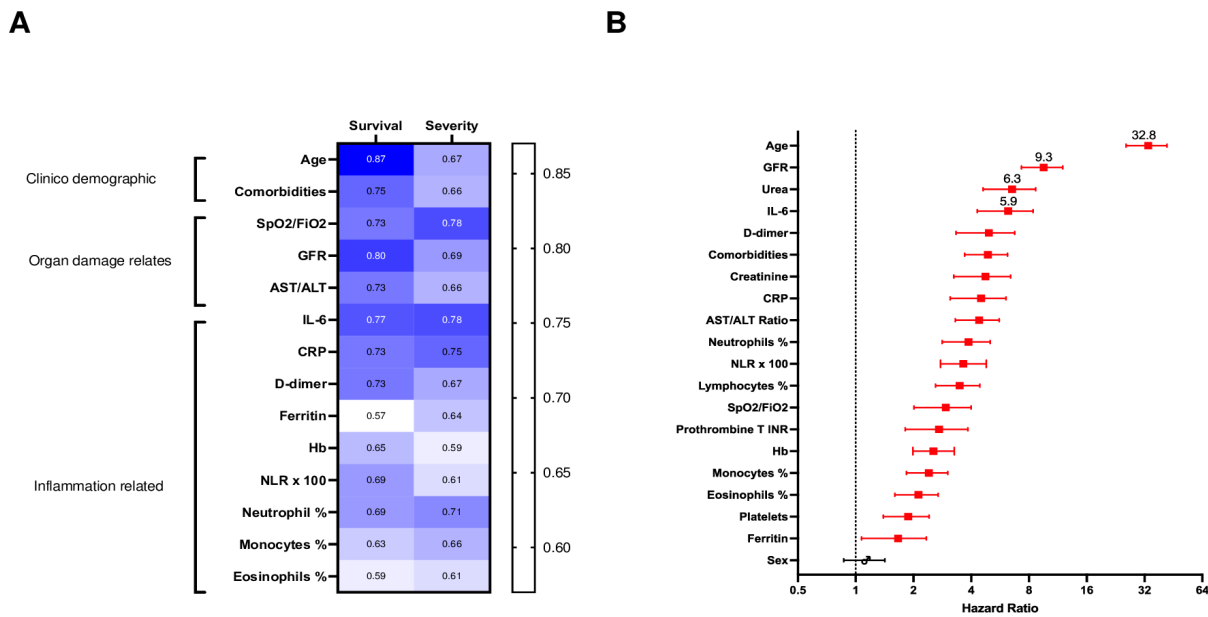


Fig 5. Relative weight of different variables in prediction. (A) Heatmap summarising the values under the curve (AUC) generated by applying clinical laboratory performance test to each the main variables; the performance was assessed by survival/decease and for non-severity/severity outcomes. (B) Hazard ratios corresponding to survival curves for Youden index cut-off. Red, significant values. SpO2/FiO2, oxygen saturation/fraction of inspired oxygen; GFR, glomerular filtration rate, NLR, neutrophil-to-lymphocyte ratio; CRP, C-reactive protein; AST, aspartate aminotransferase; ALT, alanine aminotransferase; Hb, haemoglobin. The r- and p-values of the data represented in the heatmap are in xlsx format files in the supplementary material “Correlation of variables, r-values” and “Correlation of variables, p-values.”

Predictive power of variables during hospitalisation

The analysis of the 7,586-follow-up observations showed that association of biomarkers with survival varied during the 28 days of follow-up. The Kaplan-Meier survival curves of most IFRB variables for predicting survival remained separated during the first few days of hospitalisation with maximum separation around day 5 (Fig 6). Interpretation of the values in patients with longer hospital stays was difficult due to the decreasing sample size and complications arising from medical interventions. The survival curves for ODRBs, GFRs and AST/ALT ratio maintained their separation for most of the follow-up period.

IFRB

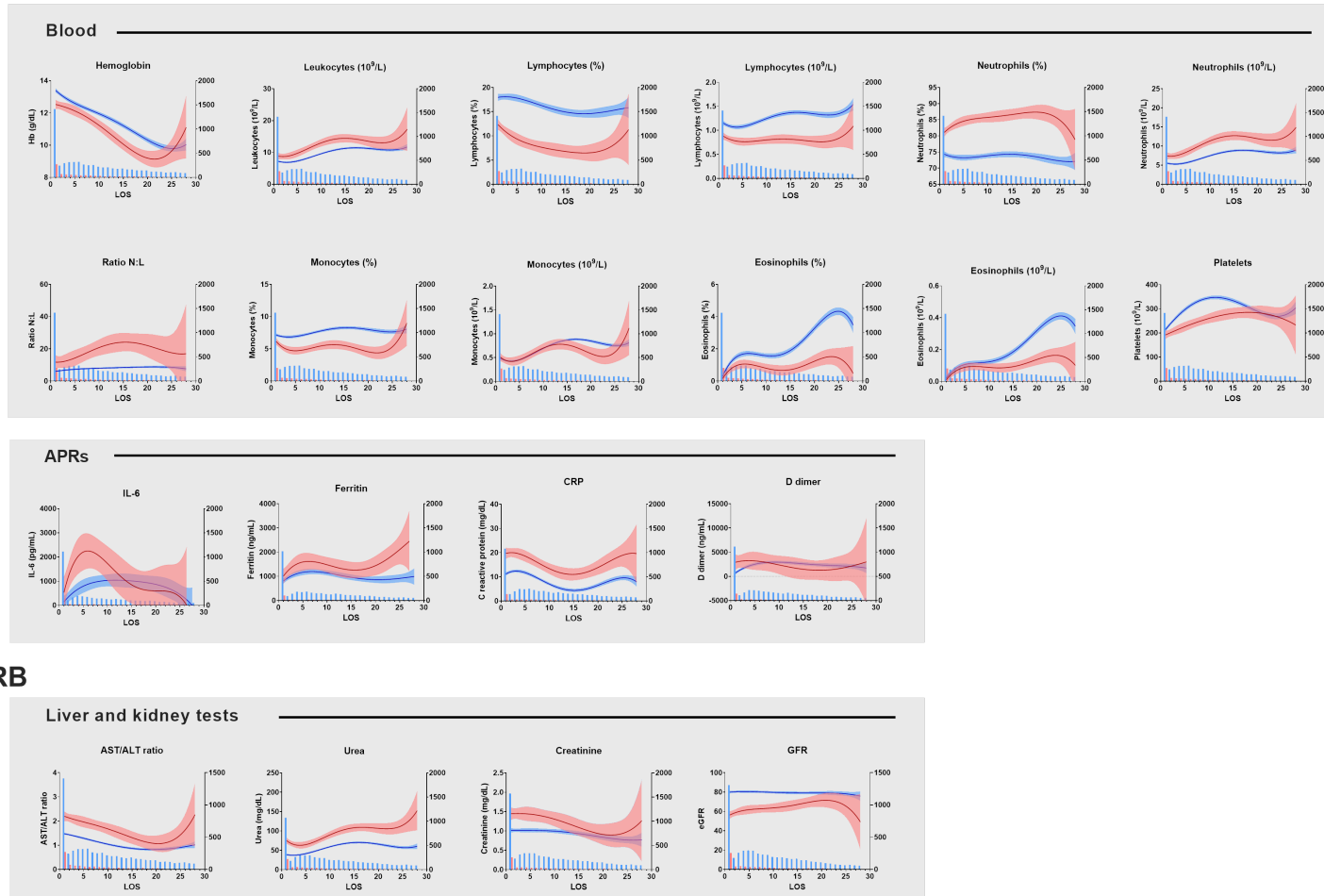


Fig 6. Vall d'Hebron University Hospital cohort, variations in the average clinical laboratory variables during the 28-day follow-up period. The blue and red lines represent the mean \pm CI values of the parameter for each day of follow-up for the survivors and deceased respectively. The blue bars indicate the number of values available for each day. Notice that samples were not obtained every day and therefore the averages result from plotting together all available values for each day of follow-up, as in Abers et al.[1] Data correspond to 7,586 samples, 6,589 from survivors and 997 from deceased out of 1,079 patients of the HUVH cohort. NLR, neutrophil-to-lymphocyte ratio; CRP, C-reactive protein; AST, aspartate aminotransferase; ALT, alanine aminotransferase; GFR, glomerular filtration rate; IFRB, inflammation-related biomarkers, ODBRs, organ damage-related biomarkers. APRs, acute-phase reactants.

Selection of a core panel of clinical laboratory tests

At present in HUVH, as in many hospitals, approximately 30 clinical laboratory variables and SpO₂/FiO₂ are routinely measured in COVID-19 patients as part of the work-up on admission. Correlation analysis and multivariable logistic regression showed that these variables had a high level of multicollinearity (Table 3), which was confirmed by random forest simulation and PCA (Fig 4 and 4S, Table 8S). Using repeated analysis and progressively excluding variables, a reduced set of eight variables: age, comorbidity index, SpO₂/FiO₂, haemoglobin, NLR, CRP, AST/ALT ratio, and GFR, were found to capture the prediction power of all variables (see supplementary material, “Sequence of statistical biomarkers analyses: complexity reduction” and tables “Repeated multivariable logistic regression deceased” and “Repeated multivariable logistic binary severity” among the supplementary Excel tables). As age and comorbidities are non-time-varying only six of the eight variables are required for clinical management. These results do not imply, however, that IL-6, ferritin, lactate dehydrogenase, triglycerides, procalcitonin, D-dimer, and coagulation tests do not provide valuable information in clinical practice depending on the context.

Results of the two validation cohort analyses

The comparison among the three cohorts confirmed the prognostic power of the main IFRB and ODRB variables, even though the statistical ranking of their positions varied between cohorts (Table 6, and Figs 7 and 8). In addition, biomarker performance as predictors of outcome was maintained in the three cohorts in the random forest simulations (Table 9S).

Table 6. Pairwise comparison of demographic and clinical laboratory biomarkers in the exploratory (HUVH) and the two validation cohorts (HUGTP and HUB).

Patients	Cohort HUVH (n = 1579)	Cohort HUB (n = 598)	Cohort HUGTP (n = 423)	HUVH vs. HUB (p-value)	HUVH vs. HUGTP (p-value)	HUB vs. HUGTP (p-value)
Demographics						
Age Median (IQR)	62 (50–75)	65 (53–74)	62 (52–71)	0.07	0.94	0.03
Females n (%)	699 (44.2 %)	208 (34.8 %)	157 (37.1 %)	<0.0001	0.46	0.009
Males n (%)	880 (55.7 %)	389 (65.2 %)	266 (62.90 %)			
Mortality						
Global n (%)	255/1579 (16.14 %)	154/598 (25.7 %)	52/423 (12.3 %)	<0.0001	<0.0001	0.57
Females n (%)	107/699 (15.3 %)	52/208 (25.0 %)	14/157 (8.9%)	0.002	0.0001	0.42
Males n (%)	148/880 (16.8%)	101/389 (25.9 %)	38/266 (14.3)	0.0002	0.3443	0.0003
DFSO Median (IQR)	7 (4–10)	11 (8–15)	7 (4–10)	<0.0001	>0.99	<0.0001
Laboratory variables	Median (IQR)	Median (IQR)	Median (IQR)			
Blood						
Hb (g/dL)	13.5 (12.3–14.5)	12.8 (11.5–13.9)	13.6 (12.5–14.7)	<0.0001	0.14	<0.0001
WBC (10 ⁹ /L)	6.6 (5.1–8.8)	7.2 (5.3–11.1)	6.9 (5.2–9.3)	<0.0001	0.07	0.07
Neutrophils, %	76.1 (68–83.2)	80.4 (68.8–87.9)	79.5 (71.2–85.4)	<0.0001	0.0001	0.33
Neutrophils (10 ⁹ /L)	4.9 (3.5–6.9)	5.7 (3.6–9.1)	5.2 (3.8–7.8)	<0.0001	0.005	0.17
Lymphocytes (%)	16 (10.5–23)	12.7 (7.3–20.7)	12.5 (8.1–19.1)	<0.0001	<0.0001	0.83
Lymphocytes (10 ⁹ /L)	1 (0.7–1.4)	0.9 (0.6–1.3)	0.8 (0.6–1.2)	<0.0001	<0.0001	0.09
Monocytes (%)	6.7 (4.8–8.8)	5.8 (3.6–8.9)	6.8 (4.9–9.1)	<0.0001	0.29	<0.0001
Monocytes (10 ⁹ /L)	0.4 (0.31–0.6)	0.4 (0.3–0.6)	0.5 (0.3–0.7)	0.34	0.009	0.003
Eosinophils (%)	0 (0–0.3)	0.1 (0–0.9)	0.1 (0–0.2)	<0.0001	0.47	0.006
Eosinophils (10 ⁹ /L)	0 (0–0.02)	0.01 (0–0.06)	0 (0–0)	<0.0001	<0.0001	<0.0001
Basophils (10 ⁹ /L)	0 (0.01–0.03)	0.02 (0.01–0.03)	0 (0–0)	0.06	<0.0001	<0.0001
NLR	4.8 (3.0–7.0)	6.3 (3.4–11.8)	6.3 (3.7–10.8)	<0.0001	<0.0001	0.93

Platelets (10 ⁹ /L)	197 (154–251)	234.5 (174.3–327.8)	203 (160–254)	<0.0001	0.35	<0.0001
Clinical Chemistry						
CRP (mg/dL)	8.9 (3.8–16.6)	8.1 (3.5–16.7)	9.5 (4.8–16.7)	0.31	0.64	0.69
IL-6 (pg/mL)	45.1 (23.6–80.0)	53.5 (20.4–131.1)	47.1 (24.6–92.6)	0.01	0.21	0.21
Ferritin (ng/mL)	539 (282.5–1011.5)	1210.4 (617.0–1903.3)	614 (316.5–1080)	<0.0001	0.16	<0.0001
Triglycerides (mg/dL)	121 (92–161)	173.9 (123.5–251.3)	NA (NA)	<0.0001	NA	NA
LDH (UI/L)	336 (271–421)	330.1 (261.3–448.1)	313 (224–441.5)	0.50	0.02	0.04
Urea (mg/dL)	35 (25–51)	39 (26.8–58.9)	34.9 (25–48.5)	0.009	0.17	0.009
AST (IU/L)	40 (30–60)	35.4 (23.9–58)	NA (NA)	<0.0001	NA	NA
ALT (IU/L)	28 (19–50)	33.1 (19.9–60.5)	30 (21–53)	<0.0001	0.008	0.11
Direct bilirubin (mg/dL)	0.3 (0.2–0.4)	NA (NA)	NA (NA)	<0.0001	NA	NA
Total bilirubin (mg/dL)	0.6 (0.5–0.7)	0.5 (0.4–0.7)	0.6 (0.5–0.8)	<0.001	0.03	<0.0001
D dimer (ng/mL)	263 (168–463.5)	590 (355–2108)	670 (415–1188.5)	<0.0001	<0.0001	0.69
Fibrinogen (g/L)	5.1 (4.4–6)	5.8 (5.1–6.6)	7.6 (6.5–8.8)	<0.0001	<0.0001	<0.0001
Prothrombin time INR	1.1 (1.0–1.2)	1.1 (1.1–1.2)	1.22 (1.1–1.4)	<0.0001	<0.0001	<0.0001

AST, Aspartic Amino Transferase; ALT, Alanine Amino Transferase; CRP, C Reactive Protein; GFR, Glomerular Filtration Rate; Hb, Hemoglobin; NLR, Neutrophil Lymphocyte Ratio; WBC, White Blood cell Count.

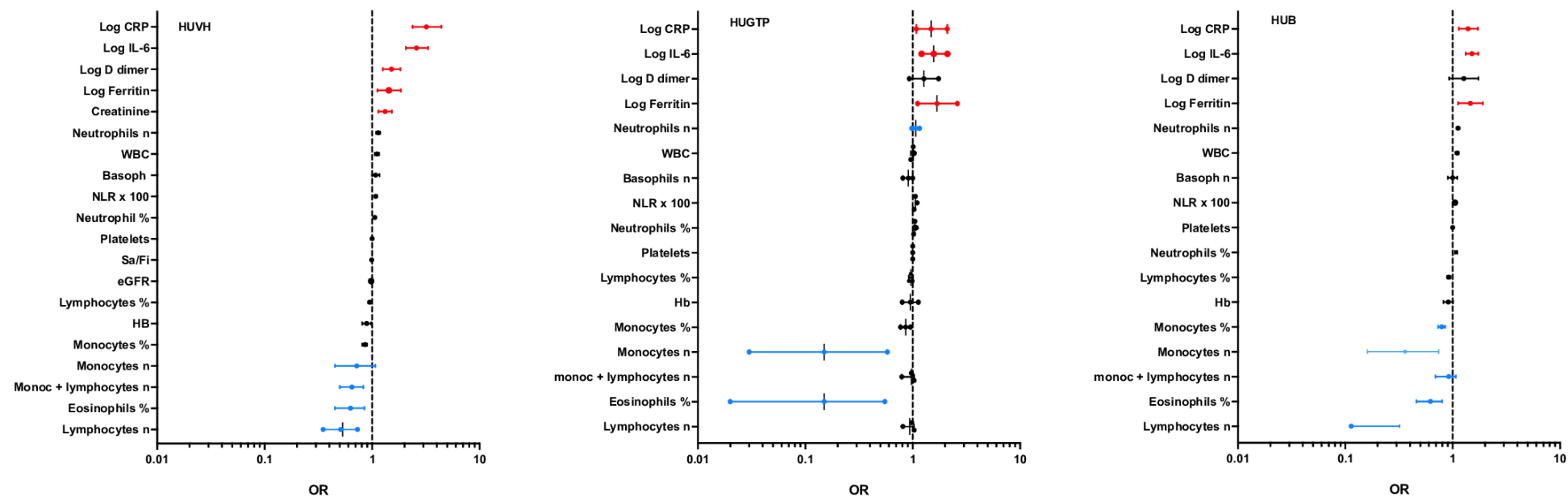


Fig 7. Multivariable logistic regression analysis, age-adjusted, for the main variables of the three hospital cohorts. The three forest plots show how, after correcting for age, the APRs rank above the estimated glomerular filtration rate (eGFR) in the HUVH cohort and have a similar ranking in the three cohorts. The horizontal whiskers represent the 95% confidence intervals; values in red indicate positive predictive and blue negative predictive effect of the 28-day survival/deceased as outcome. These graphs are for comparing the OR rankings among the different hospital cohorts, and not for comparing the weight of the variables within a cohort, as the ORs are derived from variables that use different units and ranges of variation. APR, acute-phase reactants; DFSO, days from symptom onset; HUVH, Vall d'Hebron University Hospital; LOS, length of stay; NLR, neutrophil-to-lymphocyte ratio; CRP, C-reactive protein; AST, aspartate aminotransferase; ALT, alanine aminotransferase; eGFR, estimated glomerular filtration rate; IL, interleukin; LDH, lactate dehydrogenase; Hb, haemoglobin.

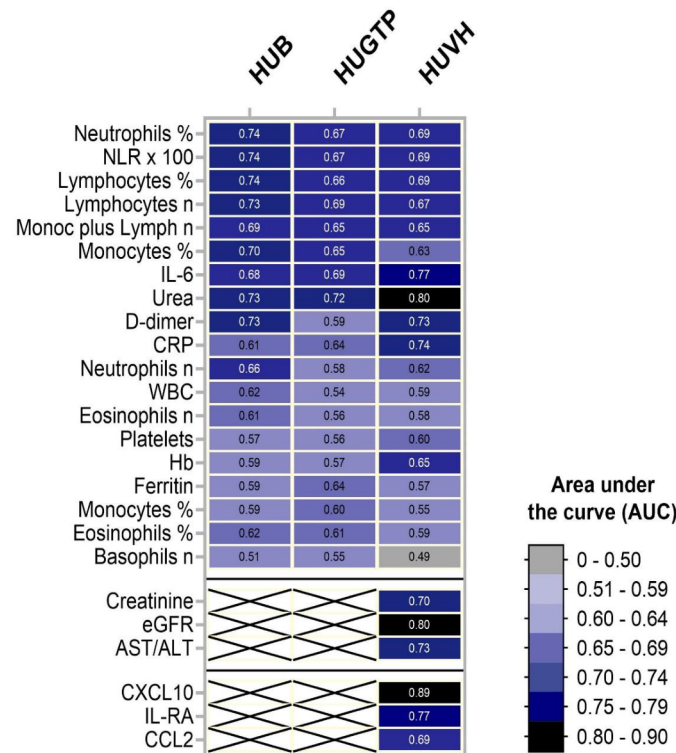


Fig 8. Heatmap of the area under the curve (AUC) of the receiver-operating characteristic curves corresponding to the variables available for the three cohorts. IL-6, CRP, urea, lymphocytes, and neutrophils occupy central positions. At the bottom, the AUC for some variables available only from the HUVH cohort and the AUC values for the three cytokines that perform better in the group of 74 patients who were analysed in the HUVH cohort. The numbers within the cells are the AUC values. APR, acute-phase reactants; Sa/Fi, oxygen saturation/fraction of inspired oxygen; DFSO, days from symptom onset; HUVH, Vall d'Hebron University Hospital; LOS, length of stay; NLR, neutrophil-to-lymphocyte ratio; CRP, C-reactive protein; AST, aspartate aminotransferase; ALT, alanine aminotransferase; eGFR, estimated glomerular filtration rate; IL, interleukin; LDH, lactate dehydrogenase; Hb, haemoglobin; ROC, receiver-operating characteristic; AUC, area under the curve.

Predictive ability of immunological variables

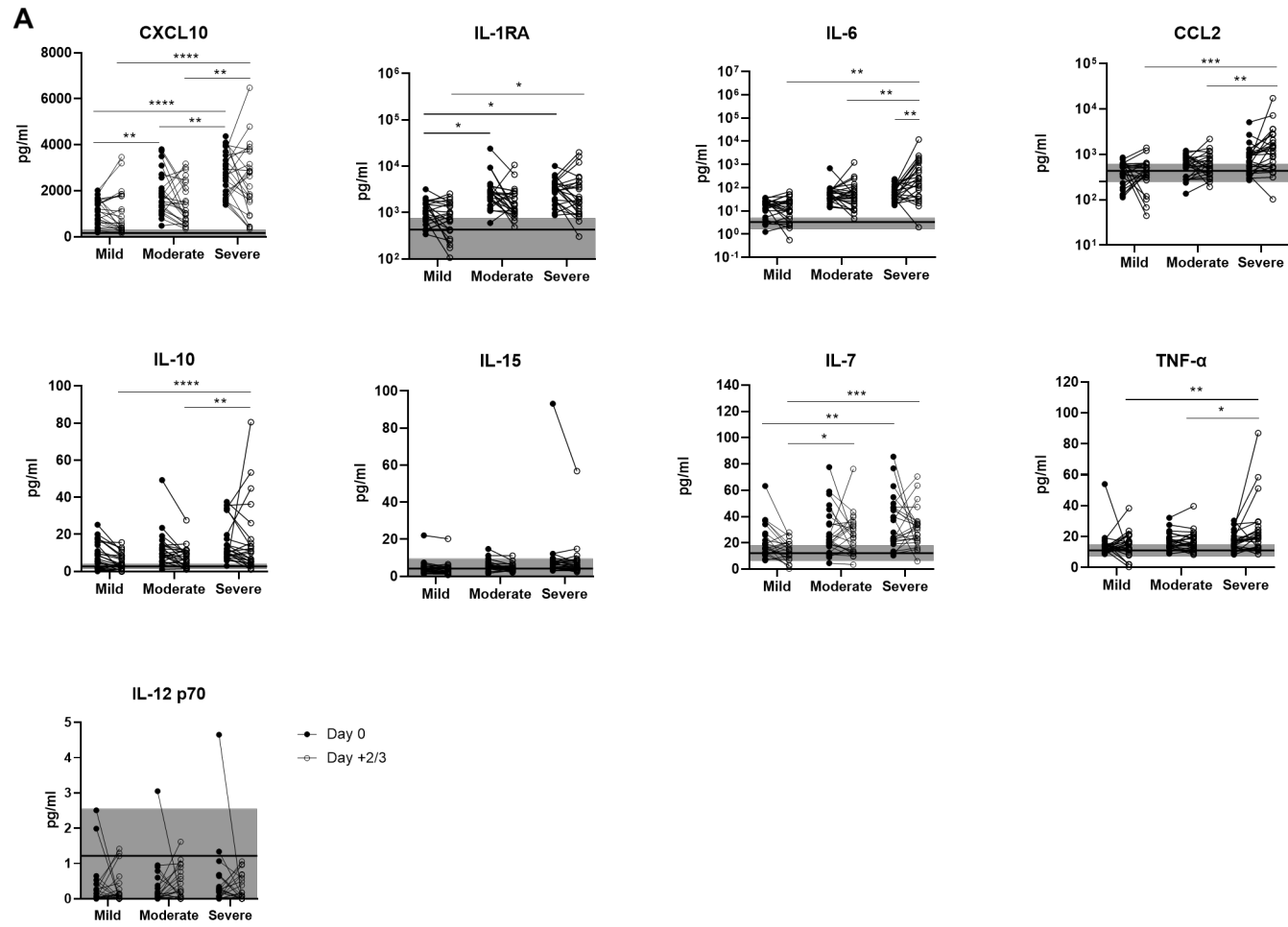
Despite the limited size of the group analysed in the pilot study (n=74, Table 10S), CXCL10 had the highest ROC curve (AUC=0.83) of all variables including age, IFRB and ODRB, and performed better than any of the other variables considered. IL1RA and CCL2 also showed promise as biomarkers (Table 7 and Fig 9).

Table 7. Performance of expanded immunological parameters in the special immunological studies group as assessed by ROC curve analysis and compared with other variables in the same group.

Survival/decease as outcome											
Variables	AUC	CI	p-value			AUC t1	CI	p-value	AUC t2	CI	p-value
Age	0.55	0.42-0.69	0.438								
Clin Lab Biomarkers					Cytokines						
GFR	0.55	0.46-0.74	0.176		CXCL10	0.83	0.74-0.92	2.34E-06	0.77	0.65-0.88	1.24E-04
IL-6	0.60	0.66-0.88	0.000		IL-1RA	0.77	0.60-0.84	0.002	0.74	0.61-0.85	7.71E-04
SpO2/FiO2 ratio	0.77	0.70-0.91	<0.001		IL-6	0.76	0.65-0.87	1.903E-04	0.83	0.73-0.93	2.34E-06
CRP	0.80	0.61-0.86	0.002		CCL2	0.69	0.56-0.82	0.006	0.81	0.69-0.91	1.60E-05
D-dimer	0.73	0.43-0.71	0.353		IL-10	0.67	0.54-0.79	0.019	0.72	0.60-0.84	0.0014
Creatinine	0.57	0.49-0.78	0.069		IL-15	0.67	0.54-0.80	0.012	0.74	0.63-0.85	5.00E-04
Lymphocytes, %	0.63	0.62-0.86	0.001		IL-7	0.65	0.52-0.79	0.027	0.73	0.62-0.85	8.036E-04
NLR ×100	0.74	0.63-0.87	0.001		TNF-α	0.65	0.51-0.79	0.033	0.73	0.55-0.81	0.008
Neutrophils, %	0.75	0.66-0.89	0.000								
Hb	0.52	0.37-0.68	0.775								
Monocytes, %	1.00	1.00-1.00	<0.001								
Platelets	0.52	0.38-0.66	0.789		Flow cytometry						
Eosinophils, %	0.58	0.45-0.72	0.263		CD3+CD62L+ Naive T cells (%)	0.73	0.54-0.92	0.032	NA	NA	NA
Ferritin	0.61	0.46-0.76	0.147		TH17 (n)	0.67	0.45-0.88	0.131	NA	NA	NA
Non-severe vs severe as outcome											
Variables	AUC	CI	p-value			AUC t1	CI	p-value	AUC t2	CI	p-value
Age	0.55	0.42 to 0.69	0.438								
Clin Lab Biomarkers					Cytokines						
GFR	0.60	0.45 to 0.74	0.180		CXCL10	0.83	0.74-0.92	2.340E-06	0.77	0.65-0.89	1.24E-04
IL-6	0.77	0.65 to 0.88	2.72E-04		IL-6	0.77	0.66-0.88	1.903E-04	0.83	0.73-0.94	2.34E-06
SpO2/FiO2 ratio	0.80	0.70 to 0.91	3.08E-05		IL1-RA	0.73	0.60-0.84	7.714E-04	0.74	0.62-0.86	7.71E-04
CRP	0.73	0.61 to 0.86	0.002		IL-15	0.72	0.55-0.81	0.012	0.75	0.63-0.86	4.98E-04
D-dimer	0.57	0.43 to 0.71	0.353		CCL-2	0.69	0.57-0.82	0.065	0.81	0.69-0.92	1.60E-05
Creatinine	0.63	0.49 to 0.78	0.069		IL-10	0.67	0.54-0.79	0.019	0.73	0.61-0.85	0.001
Lymphocytes, %	0.74	0.62 to 0.86	0.001		TNF-alpha	0.65	0.51-0.79	0.033	0.69	0.56-0.82	0.008
NLR ×100	0.75	0.63 to 0.87	6.08E-04		IL-7	0.64	0.50-0.77	0.051	0.74	0.62-0.85	8.04E-04
Neutrophils, %	0.77	0.66 to 0.89	1.77E-04		IL-2	0.6	0.46-0.73	0.176	0.78	0.66-0.90	7.23E-05
Hb	0.52	0.37 to 0.68	0.775		IL-17	0.52	0.38-0.66	0.777	0.70	0.57-0.83	0.005
Monocytes, %	0.72	0.60 to 0.84	0.003								
Platelets	0.52	0.38 to 0.66	0.789		Flow cytometry						
Eosinophils, %	0.58	0.45 to 0.72	0.263		CD3+CD62L+ Naive T (%)	0.61	0.40 to 0.83	0.3080			
Ferritin	0.61	0.46 to 0.76	0.147		TH17 (n)	0.57	0.34 to 0.79	0.5490			

Cytokine group of patients, n=74, Flowcytometry phenotype group of patients n= 41, for details see Table 10S.

T1, time 1, initial data, T2 time 2, 2-3 days after onset. CRP; C Reactive Protein; NLR, Neutrophil / Lymphocyte Ratio; GFR, Glomerular Filtration Rate;; Hb, Hemoglobin. P valued in bold, significant.



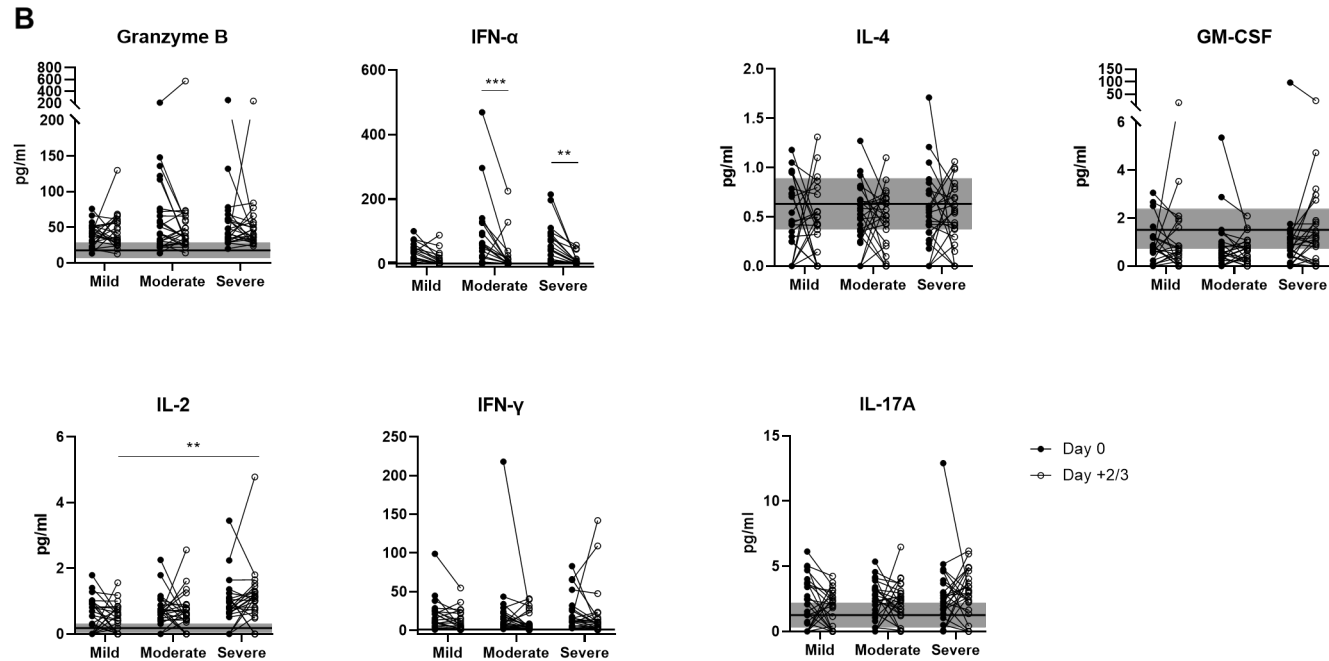


Fig 9. Levels of cytokines and related factors in the Vall d'Hebron University Hospital cytokine studies sub-cohort. The levels of cytokines were measured in the ELLA® platform cytokines on days 0 and +2, and the changes in the levels are shown as before/after graphs. (A) cytokines mediating innate immunity and (B) IFN-alpha plus cytokines mediating adaptive immunity.

The immune phenotype was analysed in 41 patients (Table 10S). There was a steep reduction in the size of all T-cell subsets, which was more marked for CD8 effector and memory cells, and an increase in activation markers that was similar to the pattern observed in other time-series analyses [23,36], revealing a deep disturbance of the immune response in severely ill patients (see Expanded phenotype analysis in supplementary). Naïve T cells were found associated to higher mortality (Figs 10 and 11S).

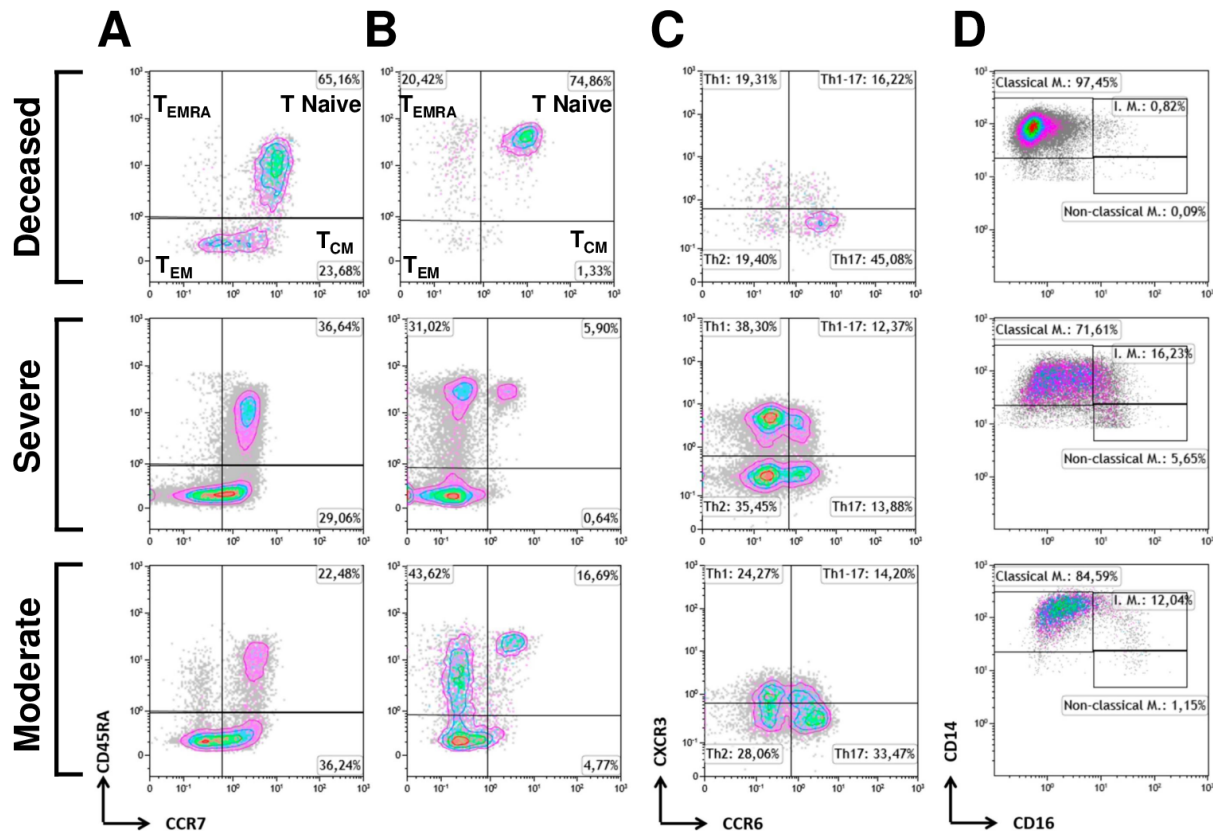


Fig 10. Representative flow cytometry plots from the Vall d'Hebron University Hospital cytokine studies sub-cohort. A, CD4 and B, CD8 T lymphocyte subpopulations distributed by differentiation phenotypes based on CD45RA and CCR7. C, Th-polarisation by CXCR3 and CCR6 expression. D, Monocyte subpopulations (classical intermediate monocytes [IM] and non-classical monocytes) in a comparison of patients belonging to the deceased, severe, and moderate patient categories.

DISCUSSION

The analyses revealed the limitations of currently used clinical laboratory tests used to assess the prognosis of patients with COVID-19 and tried to improve their interpretation by grouping them into categories that reflect the two main biological processes that are measured, i.e., inflammation and organ damage. As their limitations are due to redundancy, clinical management protocols could be simplified, but additional biomarkers with independent predictive power are urgently needed. This study highlights the lack of tests, for early prediction of the specific immune response to SARS-CoV-2. Such tests could provide critical non-redundant information required for prediction and clinical management. The results of the pilot study using a selection of robust immunological techniques derived from other areas of clinical immunology, suggest that better tests can be identified through systematic investigation.

As well as this central message, other notable findings are: 1) The three cohorts confirmed the strong association of: SpO₂/FiO₂, neutrophilia, lymphopenia, APRs, coagulation factors, kidney function and the AST/ALT ratio with survival and predicting disease severity. 2) There was a high

level of collinearity (redundancy) among the different variables, which explains the limited predictive ability of current tests. 3) After reducing redundancy, the best combination of variables was age, comorbidity index, SpO₂/FiO₂, NLR, CRP, AST/ALT ratio, fibrinogen, and GFR. 4) The classification of biomarkers into IFRB and ODBRs helped with their interpretation and revealed that ODBRs are better predictors of survival than severity, and that IFRBs are better predictors of severity than survival. 5) For the clinician at the bedside, laboratory ODBRs changes may be less conspicuous than IFRBs but they may deserve more attention.

There are several limitations to this study, including its retrospective nature. Another limitation is the absence of information regarding two key factors: the SARS-CoV-2 viral load and markers of the adaptive immune response. The SARS-CoV-2 detection techniques used during this period were not quantitative, and the variability of sampling efficiency reduces their value, even with current improved measurement methods. Serological markers need 7–21 days to become detectable and are not helpful as a tool to predict the prognosis of the patients during the initial medical assessment [37]. Finally, the effect of treatment on mortality, which changed continuously during the first wave, was not analysed in this study. We did not strictly follow the transparent reporting of a multivariable prediction model for individual prognosis or diagnosis recommendations, as generating a prediction mode was not an objective, but most requirements were fulfilled [38].

The analyses presented here are intended for improved interpretation of available biomarkers, but no algorithm is proposed. Most algorithms with good predictive power include parameters, such as oxygen requirements and imaging data, that reflect organ damage in patients that are already on the path to severe disease [13–21,38]. The ideal algorithm/biomarker should be able to identify patients at risk before organ damage occurs. Our results suggest that this is difficult with current tests because inflammation and organ damage biomarkers are strongly correlated at the time the patients reach the emergency department. If, as postulated, the main determinant of severity is a pre-existing latent pro-inflammatory state that leads to a late and inefficient adaptive immune response, biomarkers of this basal inflammation and inefficient response should be identifiable; if the generation of specific cytotoxic T lymphocytes is the main defence mechanism against an acute respiratory infection to a novel virus such as SARS-CoV-2, the early monitoring of these cells would help to predict the patient outcome [1,23,27,28,39–41]. These are the two obvious approaches to generate better biomarkers and the corresponding tests. Reliable early biomarkers would reduce the rate of hospitalization and as new treatments that are becoming available require early administration, generation of such biomarkers is urgent and should be feasible.

Data sharing

The supplementary material contains detailed information on the statistical analysis but deidentified data tables will be shared on request after approval of a proposal, with a signed data access agreement.

Supporting information

Sequence of statistical Biomarkers Analyses, text

Table 1S. Patients excluded from HUVH cohort.

Table 2S. Monoclonal Antibodies used in the flowcytometric phenotypic analysis

Table 3S. Distribution of comorbidities among the severity categories and demographics and hospitalization data in the HUVH cohort.

Table 4S. Demographics and hospitalization data by severity categories of the HUVH cohort.

Table 5S. Pairwise comparison of variables for maximal severity in four categories.

Table 6S. Median values of laboratory variables and the proportion out of the normal range and relation with mortality.

Table 7S. ROC curve analysis, age stratified.

Table 8S. Random Forest model applied to HUVH cohort.

Table 9S. Random Forest Model; comparison exploratory and combination of the three cohorts.

Table 10S. Patients included in immunological studies, cytokines and mononuclear cell phenotype by flowcytometry

Tables in xlsx format

Correlation of variables r values.xlsx
Correlation of variables p values.xlsx
Repeated Multiple Logistic regression binary severity.xlsx
Repeated Multiple logistic regression decease.xlsx
Multiple logistic regression for follow up.xlsx

Figures

Fig 1S. Sequence of statistical analyses and summary of conclusions from every step.
Fig 2S. Heatmap summarizing pairwise comparison; p values scale refers to non-parametric tests (Mann-Whitney and Kruskal-Wallis).
Fig 3S. Principal component analysis of the main variables, exitus is equivalent to decease
Fig 4S. Correlograms of the main variables for patients under (A) and over (B) 65 years of age.
Fig 5S. Representative Kaplan-Meier survival curves clinicodemographic biomarkers (ODRB) and inflammation related biomarkers (IFRB).
Fig 6S. Heatmap summarizing pairwise comparison of the survivors vs deceased in the three hospital cohorts; p values scale refer non-parametric comparisons (Mann-Whitney and Kruskal-Wallis).
Fig 7S. PCA analysis representation of the three hospitals cohorts, indicating similar main vectors, with local differences.
Fig 8S. Heatmap summarizing the reduction of mean Gini index in the Random Forest model that reflects the importance of each variable in the predictive model.
Fig 10S. Performance of cytokines as clinical laboratory test in ROC curve analysis
Fig 11S. Summary of flowcytometry analyses of peripheral blood mononuclear cells.

Acknowledgments

Hospital Vall d'Hebron Group for the study of COVID-19 immune profile:
Artur Llobell Uriel MD, Romina Dieli MD, PhD and Roger Colobran PhD, Immunology Division
Gemma Codina MD, PhD and Tomás Pumarola MD, PhD, Microbiology Division
Roser Ferrer PhD and Vicente Cortina BSc, Biochemistry Division
Magda Campins MD, PhD, Epidemiology and Public Health Division
Isabel Ruiz MD, Nuria Fernández MD, Esteban Ribera MD and Joan Roig MD, Infectious Diseases Division
Ricardo Ferrer MD and Adolfo Ruiz-Sanmartín MD, Intensive Care Medicine Division
Albert Selva MD, PhD and Moisés Labrador MD, PhD, Division Internal Medicine.
María José Soler Romeo MD PhD, Nephrology Division
Jaume Ferrer MD, PhD, Eva Polverino MD, PhD and Antonio Álvarez MD, PhD, Pneumology Division
María Queralt Gorgas PhD and Marta Miarons PhD, Clinical Pharmacy Division
Pere Soler-Palacín, MD, PhD and Andrea Martin, MD, Pediatrics Division
Anna Suy MD, Obstetrics and Gynecology Division
Maria Jose Buzon PhD and Meritxell Genesca PhD, Infectious Disease Research Group

We would like to thank all the patients who participated in this study. We thank all the physicians, medical students, study nurses, and trial coordinators from the participating centres. The authors thank all the patients and health staff of the Hospitals Vall d'Hebron, Bellvitge, and Germans Trias i Pujol and of the associated hospitals mentioned in the text who endured and did their best to overcome the first wave of COVID-19 in Barcelona, an experience that none of us would ever forget. The authors are grateful to Dr Isabel Novoa Garcia and Ms Sheyla Pascual Martin for their invaluable help in organizing and maintain the COVID-19 collection in the Bio-Bank; to Mr Àlex

Pérez Rodríguez, Ms Jessica Muñoz, Ms Cinta Rabaza Martí, and Ms Aina Aguiló Cucurull, the technical staff of the immunology laboratory who collected and organized the COVID-19 patient samples; and to Ms Adelaida Parada Ramos, the secretary of the Immunology Division, who helped retrieve the electronic medical records and discharge notes in regard to this study for review by the medical personnel for this study.

References

- 1 Abers MS, Delmonte OM, Ricotta EE, *et al.* An immune-based biomarker signature is associated with mortality in COVID-19 patients. *JCI Insight* 2021;**6**:m1985. doi:10.1172/jci.insight.144455
- 2 Zhou F, Yu T, Du R, *et al.* Clinical course and risk factors for mortality of adult inpatients with COVID-19 in Wuhan , China : a retrospective cohort study. *The Lancet* 2020;**6736**:1–9. doi:10.1016/S0140-6736(20)30566-3
- 3 Chams N, Chams S, Badran R, *et al.* COVID-19: A Multidisciplinary Review. *Frontiers in Public Health* 2020;**8**:1–20. doi:10.3389/fpubh.2020.00383
- 4 Ghayda RA, Lee J, Lee JY, *et al.* Correlations of clinical and laboratory characteristics of covid-19: A systematic review and meta-analysis. *International Journal of Environmental Research and Public Health* 2020;**17**:1–15. doi:10.3390/ijerph17145026
- 5 Coma Redon E, Mora N, Prats-Urbe A, *et al.* Excess cases of influenza and the coronavirus epidemic in Catalonia: a time-series analysis of primary-care electronic medical records covering over 6 million people. *BMJ Open* 2020;**10**:e039369. doi:10.1136/bmjopen-2020-039369
- 6 Guallar MP, Meiriño R, Donat-Vargas C, *et al.* Inoculum at the time of SARS-CoV-2 exposure and risk of disease severity. *International journal of infectious diseases : IJID : official publication of the International Society for Infectious Diseases* 2020;**97**:290–2. doi:10.1016/j.ijid.2020.06.035
- 7 Marks M, Millat-Martinez P, Ouchi D, *et al.* Transmission of COVID-19 in 282 clusters in Catalonia, Spain: a cohort study. *The Lancet Infectious Diseases* 2021;**21**:629–36. doi:10.1016/S1473-3099(20)30985-3
- 8 Korber B, Fischer WM, Gnanakaran S, *et al.* Tracking Changes in SARS-CoV-2 Spike: Evidence that D614G Increases Infectivity of the COVID-19 Virus. *Cell* 2020;**182**:812–827.e19. doi:10.1016/j.cell.2020.06.043
- 9 Meyerholz DK, Perlman S. Does common cold coronavirus infection protect against severe SARS-CoV-2 disease? *Journal of Clinical Investigation* 2021;**131**. doi:10.1172/JCI144807
- 10 Zhang Q, Bastard P, Liu Z, *et al.* Inborn errors of type I IFN immunity in patients with life-threatening COVID-19. *Science (New York, NY)* 2020;**370**:eabd4570. doi:10.1126/science.abd4570
- 11 Ellinghaus D, Degenhardt F, Bujanda L, *et al.* Genomewide Association Study of Severe Covid-19 with Respiratory Failure. *New England Journal of Medicine* 2020;**383**:1522–34. doi:10.1101/2020.10.06.20205864
- 12 COVID-19 Host Genetics Initiative. Mapping the human genetic architecture of COVID-19. *Nature* 2021;**600**:472–7. doi:10.1038/s41586-021-03767-x
- 13 Ambale-Venkatesh B, Quinaglia T, Shabani M, *et al.* Prediction of Mortality in hospitalized COVID-19 patients in a statewide health network. *medRxiv : the preprint server for health sciences* Published Online First: 19 February 2021. doi:10.1101/2021.02.17.21251758
- 14 Galván-Román JM, Rodríguez-García SC, Roy-Vallejo E, *et al.* IL-6 serum levels predict severity and response to tocilizumab in COVID-19: An observational study. *Journal of Allergy and Clinical Immunology* 2021;**147**:72–80.e8. doi:10.1016/j.jaci.2020.09.018

- 15 Gupta RK, Marks M, Samuels THA, *et al.* Systematic evaluation and external validation of 22 prognostic models among hospitalised adults with COVID-19: an observational cohort study. *The European respiratory journal* 2020;**56**:2003498. doi:10.1183/13993003.03498-2020
- 16 Jehi L, Ji X, Milinovich A, *et al.* Development and validation of a model for individualized prediction of hospitalization risk in 4,536 patients with COVID-19. *PLOS ONE* 2020;**15**:e0237419. doi:10.1371/journal.pone.0237419
- 17 Knight SR, Ho A, Pius R, *et al.* Risk stratification of patients admitted to hospital with covid-19 using the ISARIC WHO Clinical Characterisation Protocol: development and validation of the 4C Mortality Score. *BMJ* 2020;**2**:m3339. doi:10.1136/bmj.m3339
- 18 Marcolino MS, Pires MC, Ramos LEF, *et al.* ABC2-SPH risk score for in-hospital mortality in COVID-19 patients: development, external validation and comparison with other available scores. *International Journal of Infectious Diseases* 2021;**110**:281–308. doi:10.1016/j.ijid.2021.07.049
- 19 Riveiro-Barciela M, Labrador-Horrillo M, Camps-Relats L, *et al.* Simple predictive models identify patients with COVID-19 pneumonia and poor prognosis. *PLoS ONE* 2020;**15**. doi:10.1371/journal.pone.0244627
- 20 Smith GB, Prytherch DR, Meredith P, *et al.* The ability of the National Early Warning Score (NEWS) to discriminate patients at risk of early cardiac arrest, unanticipated intensive care unit admission, and death. *Resuscitation* 2013;**84**:465–70. doi:10.1016/j.resuscitation.2012.12.016
- 21 Wynants L, Van Calster B, Collins GS, *et al.* Prediction models for diagnosis and prognosis of covid-19: systematic review and critical appraisal. *BMJ* 2020;**369**:m1328. doi:10.1136/bmj.m1328
- 22 Mathew D, Giles JR, Baxter AE, *et al.* Deep immune profiling of COVID-19 patients reveals distinct immunotypes with therapeutic implications. *Science* 2020;**369**. doi:10.1126/science.abc8511
- 23 Lucas C, Wong P, Klein J, *et al.* Longitudinal analyses reveal immunological misfiring in severe COVID-19. *Nature* 2020;**584**:463–9. doi:10.1038/s41586-020-2588-y
- 24 Wilk AJ, Rustagi A, Zhao NQ, *et al.* A single-cell atlas of the peripheral immune response in patients with severe COVID-19. *Nature Medicine* 2020;**26**:1070–6. doi:10.1038/s41591-020-0944-y
- 25 Kuri-Cervantes L, Pampena MB, Meng W, *et al.* Comprehensive mapping of immune perturbations associated with severe COVID-19. *Science Immunology* 2020;**5**. doi:10.1126/sciimmunol.abd7114
- 26 Mann ER, Menon M, Knight SB, *et al.* Longitudinal immune profiling reveals key myeloid signatures associated with COVID-19. *Science Immunology* 2020;**5**:eabd6197. doi:10.1126/sciimmunol.abd6197
- 27 Arunachalam PS, Wimmers F, Mok CKP, *et al.* Systems biological assessment of immunity to mild versus severe COVID-19 infection in humans. *Science* 2020;**369**:1210–20. doi:10.1126/SCIENCE.ABC6261
- 28 Mueller YM, Schrama TJ, Ruijten R, *et al.* Immunophenotyping and machine learning identify distinct immunotypes that predict COVID-19 clinical severity. *medRxiv : the preprint server for health sciences* Published Online First: 2021. doi:10.1101/2021.05.07.21256531
- 29 Marshall JC, Murthy S, Diaz J, *et al.* A minimal common outcome measure set for COVID-19 clinical research. *The Lancet Infectious Diseases* 2020;**20**:e192–7. doi:10.1016/S1473-3099(20)30483-7
- 30 Levey AS, Stevens LA, Schmid CH, *et al.* A new equation to estimate glomerular filtration rate. *Annals of internal medicine* 2009;**150**:604–12. doi:10.7326/0003-4819-150-9-200905050-00006

- 31 Maecker HT, McCoy JP, Nussenblatt R. Standardizing immunophenotyping for the Human Immunology Project. *Nature Reviews Immunology*. 2012;**12**:191–200. doi:10.1038/nri3158
- 32 Garcia-Prat M, Álvarez-Sierra D, Aguiló-Cucurull A, *et al.* Extended immunophenotyping reference values in a healthy pediatric population. *Cytometry Part B, Clinical cytometry* 2019;**96**:223–33. doi:10.1002/cyto.b.21728
- 33 Barcelona demography, June 2020. <https://www.ine.es/jaxiT3/Datos.htm?t=2861>
- 34 Sempere A, Salvador F, Monforte A, *et al.* Covid-19 clinical profile in latin american migrants living in spain: Does the geographical origin matter? *Journal of Clinical Medicine* 2021;**10**:1–9. doi:10.3390/jcm10225213
- 35 Ferrer R, Báguena M, Balcells J, *et al.* Planning for the assistance of critically ill patients in a Pandemic Situation: The experience of Vall d’Hebron University Hospital. *Enfermedades infecciosas y microbiología clinica (English ed)* 2020;**110**:697–700. doi:10.1016/j.eimc.2020.08.007
- 36 Chen Z, John Wherry E. T cell responses in patients with COVID-19. *Nature reviews Immunology* 2020;**20**:529–36. doi:10.1038/s41577-020-0402-6
- 37 Röltgen K, Powell AE, Wirz OF, *et al.* Defining the features and duration of antibody responses to SARS-CoV-2 infection associated with disease severity and outcome. *Science Immunology* 2020;**5**:eabe0240. doi:10.1126/sciimmunol.abe0240
- 38 Collins GS, Reitsma JB, Altman DG, *et al.* Transparent reporting of a multivariable prediction model for individual prognosis or diagnosis (TRIPOD): The TRIPOD statement. *Annals of Internal Medicine* 2015;**162**:55–63. doi:10.7326/M14-0697
- 39 Hadjadj J, Yatim N, Barnabei L, *et al.* Impaired type I interferon activity and inflammatory responses in severe COVID-19 patients. *Science* 2020;**369**:718–24. doi:10.1126/science.abc6027
- 40 Lucas C, Klein J, Sundaram ME, *et al.* Delayed production of neutralizing antibodies correlates with fatal COVID-19. *Nature medicine* 2021;**27**:1178–86. doi:10.1038/s41591-021-01355-0
- 41 Sette A, Crotty S. Adaptive immunity to SARS-CoV-2 and COVID-19. *Cell* 2021;**184**:861–80. doi:10.1016/j.cell.2021.01.007

SUPPLEMENTARY MATERIAL

SEQUENCE OF STATISTICAL BIOMARKERS ANALYSES

The statistical analysis sequence and main conclusions are summarised in figure 1S. The main stages were exploratory, in depth and complementary analyses.

Exploratory Analysis

22 of 29 available variables were found strongly associated to 28-day outcome by pairwise comparison (table 2, and figure 3). Despite these strong associations, Multiple Logistic Regression, Random Forest Model and Principal Component (PCA) analysis showed limited prediction power as only around half of deceased/severe cases were correctly classified in the multiple logistic regression and random forest classification tables and separation was poor in PCA (tables 3 and 8S and figure 3S). To explain this limitation, multiple mutual correlation analysis was carried out (figure 4) and conclusions were confirmed by repeated logistic regression, see sections below “Complexity reduction and the weight of age” and “Repeated multiple Logistic regression...”.

In Depth Analyses

Multiple correlations

In the global correlogram, lymphocytes, monocytes and eosinophils constitute a cluster of variables that correlated positively with each other ($r=0.42$ to $r=0.30$, see figure 4), while neutrophils, basophils and platelets form another cluster ($r=0.4$ to $r=0.38$); each cluster kept a negative correlation with the other (lymphocytes with neutrophils % $r=-0.95$). These reciprocal changes in neutrophil and lymphocyte clusters are also seen across the severity categories; Acute Phase Reactants (APRs) correlated among themselves ($r=0.71$ and $r=0.46$ for IL-6 with CRP and with Ferritin respectively) with coagulation factors ($r=0.67$, $r=0.42$, $r=0.35$ for IL-6, with fibrinogen, D-dimer and prothrombin time (INR) respectively) and with neutrophils %, (IL-6 $r=0.6$, CRP $r=0.6$). This may reflect the central position of CRP in the network of interactions typically occurring in infection diseases and systemic inflammation in which IL-1, IL-6 and TNF-alpha all act synergistically on the liver increasing the production of acute phase proteins and coagulation factors.¹ Age correlated strongly with kidney function tests ($r=0.6$, $r=0.32$ and $r=-0.6$ for urea, creatinine and GFR respectively), moderately with AST/ALT ratio ($r=0.40$) and weakly with SpO₂/FiO₂ ($r=0.32$). All above correlations were significant, (tables format excel r and p values of correlogram xlsx format). The relative weight of age in different age intervals was investigated by comparing the correlograms of patients over and under 65 years which showed that they are maintained (figure 4S <65 years vs >65 years correlation heatmaps). These networks of correlations explain the compound effect of age on the clinical laboratory variables and indicated that the limited prediction of power of biomarker combinations is due to redundancy. This conclusion was supported by the VIF indexes of many variables in the multiple logistic regression analysis, see below the sections “Repeated multiple logistical regression to confirm redundancy and identification minimal set of variables”.

Complexity reduction and the weight of age

The above analysis and the understanding of the biological interrelations of the variables led to reduce the complexity of the analysis by combining variables of physio pathologically related families that were statistically correlated in: 1) Blood including Haemoglobin (Hb), Blood White Cell Count (WBC) and differential counts in % and number, Neutrophil to Lymphocyte Ratio (NLR) and platelets; 2) Acute Phase Reactants including CReactive Protein (CRP), IL-6 and Ferritin; 3) Coagulation including D-dimer, fibrinogen, prothrombin time (INR); 4) Liver tests including Bilirubin direct and total, AST, ALT and AST/ALT ratio; and 5) Kidney function tests including urea, creatinine and glomerular filtration rate (GFR). As these groups of variables were found to behave similarly as predictors of survival and of severity and they are known to participate in common pathophysiological networks, we further combined them in Clinical Demographic (CD) variables, InFLammation Related Biomarkers (IFRB) that include the blood, APRs and coagulation and in Organ Damage Related biomarkers (ODRB) that include liver and kidney tests plus SpO₂/FiO₂, as a biomarker of lung damage.

In the pairwise comparisons for survival/decease the lowest p values among CDs were for age and comorbidities e.g., exact $p=7.26 \times 10^{-81}$ and 2.3×10^{-38} respectively (table 2). Among ODRBs the lowest p values were GFR 2.37×10^{-101} , AST/ALT ratio 6.06×10^{-31} , while among IFRBs lowest p values were IL-6, 10^{-55} ; CRP 5.99×10^{-43} ; and NLR 0.34×10^{-41} .

The analyses of variables in patients split into four maximal severity categories (Kruskal-Wallis test) showed that in severe vs deceased, ODRB (GFR and AST/ALT ratio) kept a high differential association (p values 10^{-112} - 10^{-11}) while the association with IFRBs, APR and WBC differential counts was weaker i.e., only Hb, platelets and coagulation factors were significantly associated to outcome. Age and comorbidities are differentially associated to severity categories as outcome with p values of 2.8×10^{-53} and 10^{-10} respectively but in the comparison of moderate vs severe, age association was not significant and the significance of the associations is low for ODRB while is high for IFRBs (table 4S and figure 2S).

The univariate logistic regression analysis of the 19 main biomarkers adjusted by age confirmed that the association of 16 of 19 variables including ODRB and IFRB, with survival and severity respectively is only partially linked to age. The corresponding age corrected Z values followed the ranking IL-6 > CRP > SpO2/FiO2 > neutrophils % > NLR > Monocytes % > Neutrophils n > GFR > lymphocytes % for survival/decease and IL-6 > CRP > neutrophils % > SpO2/FiO2 >> NLR > lymphocytes % > Monocytes % for severity where GFR is displaced to position 11th in the ranking (table 4).

Kaplan-Mayer survival curve analysis using Youden indexes from laboratory test performance ROC curves as cut-off (see next section Performance of variables by ROC curves...) was applied to assess the relation of each biomarker with survival within the 28d period (figures 5B and 5S). Age had the highest hazard ratio (32.8), followed by GFR (9.3), urea (6.3), IL-6 (5.9), D-dimer (4.7), comorbidities (4.7), AST/ALT (4.3), CRP (4.3), SpO2/FiO2 (2.8) and differential WBC % (2.8-2.6) while platelets, ferritin and sex gave low or no-significant hazard ratios.

Performance of variables by ROC curve analysis as applied to clinical laboratory tests

ROC curves were generated to assess biomarker predictive power in the clinical context. For survival/decease as outcome, GFR, IL-6, AST/ALT, and SpO2/FiO2 showed the best curves, AUCs (CI): 0.80 (0.77-0.83), 0.77 (0.73-0.81), 0.73 (0.69-0.77) and 0.73 (0.70-0.78) respectively, followed by the other APRs and blood variables. Age, treated as a variable for comparison, gave an AUC of 0.87 (0.85-0.89) better than any of other variables; comorbidities gave an AUC 0.75 (0.72-0.78) (table 5 and figure 5A). For non-severe vs severe as outcome, the larger AUC corresponded to: IL-6, 0.78 (0.75-0.80) followed by SpO2/FiO2, 0.77 (0.74-0.81), CRP, 0.75 (0.71-0.77), NLR 0.71 (0.68-0.73), GFR 0.69 (0.65-0.71) and age 0.67 (0.64-0.70). The comparison of the ROC curves to predict severity with those to predict survival shows that ODRBs are better predictor of survival/decease and IFRBs of severity/non-severe with the exception of SpO2/FiO2 that is a very good predictor of both outcomes (table 5). To reduce the effect of age better assess the effect of the other variables, patients were stratified by age intervals (40-55, 55-65, 66-75, 76-85 and >85 years old); the variable giving the larger AUC across all age group was SpO2/FiO2 (0.72 to 0.79) except in over 85 year-old patients in which IL-6 had the larger AUC (0.79); in this stratified analysis tests measuring IFRBs variables were found to be better tests than ODRBs probably because there is higher collinearity of ODRB with age, as suggested by the reduction of their prediction power when stratified by age (table 7S).

Repeated multiple logistical regression to identify of the minimal set of variables, and redundancy confirmation

Repeated multiple logistic regression analyses of variables for outcomes decease and severity were carried out to confirm their redundancy, calculating VIF scores of collinearities to identify the combinations giving with the best prediction scores. The exploratory analysis had already indicated some redundancies, and the number of variables was reduced to 19 which included age, sex, comorbidity index, Hb, neutrophil, lymphocytes, monocyte, and eosinophils % and number (n), NLR, platelets, CRP, IL-6, D-dimer, ferritin, fibrinogen, prothrombin time INR, SpO2/FiO2, AST/ALT ratio and GFR. Notice that when SpO2/FiO2 was included, the number of observations was reduced to 411, as SpO2/FiO2 was available in only 52% of these patients. The scores generated for each variable were odd ratios (OR), Z scores, p values, VIF, area under the ROC curve (AUC, CI) at 50% cut-off, Positive Predictive Value (PPV, predicting either decease or severity) and Negative Predictive Value (NPV, predicting survival or non-severity) and the % of correctly classified patients for the outcome decease or severity (tables logistic regression in xlsx format).

For survival/decease prediction with 19 variables, scores were AUC 0.95, PPP 75.7, NPP 94.4 and 54.4% of deceased patients correctly classified (n=411); if age, comorbidities, and sex were excluded, values were AUC 0.84, PPP 76.6, NPP 80.6 and 58.2% correctly classified (n=411). When SpO2/FiO2, was excluded from the biomarkers the prediction scores were AUC 0.86, PPP 68.9, NPP 92.9 and correct classification of decease cases was reduced to

22.7 %, however these variables correctly classified 99% of the patients who survived as deduced by the PPP and NPP (n=994). Age, comorbidity, and sex by themselves would give an AUC of 0.89, PPP 56.7, NPP 88.5 and 36.5% deceased correctly classified (n=1,579) with sex not modifying the scores. Therefore, while, if additive, the prediction of demographics and biomarkers would give 90.7% of correctly classified disease cases, only 58.2% of cases were actually correctly classified. A reduced set of variables to predict survival/death was generated by repeated analyses progressively excluding redundant variables thus reducing the VIF scores of collinearities; the reduced set including eight variables: age, comorbidity index, SpO2/FiO2, NLR, CRP, fibrinogen, AST/ALT ratio and GFR gave AUC 0.94, PPP 83.3, NPP 94.1, and 65.8 of deceased patients were correctly classified (n=502). The same analysis with 19 variables applied to non-severity/severity outcome gave AUC 0.85, PPP 74.7%, NPP 79.2 and 54.6 of severe were correctly classified (n=411). If age and comorbidities were excluded, scores were AUC 0.84, PPP 76.6% NPP 80.6, and 58.2 % of severe cases correctly classified. When SpO2/FiO2, was excluded, the prediction scores were AUC 0.81, PPP 65.3, NPP 81.0 and correct classification of severe cases was reduced to 36.2% (n=994). The reduced set of eight variables gave AUC of 0.86, PPP 81.5, NPP 80.3 and correctly classified 64.1% of the severe cases (n=502).

Time course and biomarkers

The predictive value of laboratory variables was expected to evolve during the disease course but because of the retrospective nature of this study, data at regular intervals for every patient were not available. However, as we had data from 7,586 additional follow up samples corresponding 1,079 of the 1,579 patients, we plotted them to generate an approximation of the evolution of the variables along the 28-days follow-up period. The curves representing means \pm CI values for each variable for survivors and deceased maintained a clear separation during the initial 10 days and only overlapped at the end of the 28d period. Of note, NLR curves were more clearly separated between days 5 and 20, while IL-6 values overlapped after day 4-5; CRP, lymphocyte, and neutrophil % curves remained separated over most of the period; the eosinophil curve shows a remarkable increase in survivors but only after day 10. GFR curves were clearly separated from the beginning, but the mean values differ little from the normal range. From this analysis it cannot be deduced whether IFRBs precede ODRB or vice versa. (figure 6 LOWESS main)

Additional Analyses: Comparison of the exploratory with validation cohorts

The patient populations in the three hospitals were not perfectly matched for demographics nor mortality (table 6). The mortality rate was higher in HUB (25.7% vs. 16.1% and 12.3% in HUVH and HUGTP, respectively). This may be explained by their higher age, 65 (5374) as compared to HUVH 62 (50-75) and in HUGTP 62 (52-71) (table 6). There are also differences in the median laboratory variables that indicates that this cohort includes more critically ill patients. These differences however made these almost contemporary cohorts adequate for comparing the relative predictive power of clinical laboratory test with demographics and clinical variables in a real-life situation.

The pairwise univariate analysis of laboratory variables association with 28d outcome of the HUB and HUGTP data sets were conducted similarly as for the HUVH data set. The significant association was confirmed for seven blood variables, three APRs (CRP, IL-6, and ferritin), and the D-dimer (table 6 and figure 6S). The only index of renal function that was available in the three hospitals, urea, was clearly validated, and this supports the findings from the HUVH data of creatinine and GFR as having strong prognostic value after adjustment for age.

Multiple logistic regression analysis that was adjusted for age showed that the ranking of the odds ratios of clinical laboratory variables associated with mortality was similar in the three centres. The APRs, IL-6, CRP, ferritin, and D-dimer occupy the top positions of the ranking, followed by neutrophils and, in the other side, lymphocytes, monocytes, and eosinophils (figure 7).

The PCA of 17 clinical laboratory variables show an almost complete overlap that support identical basic physiopathology of the disease, regardless of the differences in the patient population (figure 7S).

The Random Forest model was applied to the common variables of the three cohorts and the reduction of the mean Gini index in the exploratory HUVH cohort and in the combination of the three cohorts were calculated. Table 9S and figure 8S show the similar rankings of the variables in the different analyses.

The clinical laboratory test performance as assessed by the AUC from ROC curves from the three hospitals, when subjected to unbiased clustering, showed the central role of APRs and kidney function; the AST/ALT ratio and GFR, available only from the HUVH cohort, showed the larger AUC, together but AUC of cytokines from the immunological studies, see below, section expanded immunological biomarkers (figure. 8 and table 7).

Additional Analyses: Pilot study of Immunological tests

Cytokine profile

Cytokines were measured in 74 patients, who were representative of the HUVH cohort's moderate and severe disease categories (age 53 [44–64] years) (see table 10S Immunological studies patient). The ELLA platform to measure cytokines has been in use in the HUVH immunology laboratory for six years to monitor cytokines in transplantation and sepsis projects and has proved very robust. Samples were collected on days 0 and +2. The levels of cytokines IL-6, TNF- α , IL-10, IL-2, CXCL10, and CCL2 as well as the receptor antagonist of IL-1 (IL-1RA) reached significantly higher values in the severe patients and tended to increase over time. The remaining cytokines and sCD163 did not show significant differences in relation to time and severity categories. On day 0, the IFN- α decreased, but increased in two mild cases; this may be interpreted as indicating the end of an initial peak in most patients. The IL 12p70 level seemed to follow a similar pattern, but the data did not show significant differences (figure 9A & B).

The comparison of correlograms of cytokines at days 0 and 2 did not show significant changes in the mutual correlations, probably because the interval was too short. However, greater differences were seen between the moderate and severe of the four categories of patients, with a loss of the correlation with IFN- α probably attributable to its quick drop in severely ill patients. We also observe a moderate increase in the correlations around IL-17 (figure 9S).

Predictive power of cytokines and sCD163 were compared for both survival and severity as outcome. For 7 of the 20 cytokines, the survival predictive power as measured by the AUC of the ROC curves at day 0 was significant and followed the order CXCL10 > ILRA > IL-6 > CCL2 > IL10 > IL-15 > IL-7 > TNF- α > IFN- α . On day +2, the predictive power order for IL-6, CCL2, IL-15, TNF- α , and IL-7 and significant for eight of them. The prediction power for non-severity vs severity categories followed the order CXCL10 > IL-6 > IL1-RA > IL-15 at day 0 and IL-6, CCL2, IL-2 at day 2 of the 10 largest AUCs were statistically significant. The ROC curves for the main clinical laboratory biomarkers were also calculated for this group and in the comparison showed smaller AUCs than these cytokines (table 5 and figure 10S).

Blood extended phenotyping

Of the 41 patients, 5, 27, 6, and 3 were in the mild, moderate, severe, and deceased severity categories, respectively. The median age was lower than that of the HUVU cohort, although the M/F proportion, DFSO, and LOS were similar (table 10S immunology cohort). As adapted for this project, the HIPC protocol generated 163 variables corresponding to 42 lymphocytes, monocytes, and neutrophil subsets.

In pairwise comparison for deacease and severity outcomes, 12 lymphocyte subsets were significantly associated with the 28-day deacease according to a ranking as follows: naïve T lymphocytes (n) > Th2 (n) > total T lymphocytes > CD8 T lymphocytes (n) > CD8 TCM (n) > CD8 TEM (n) > CD4 T lymphocytes (n) > CD4EM (n) > non-classical monocytes. Remarkably, for this subgroup, the significance was similar to that of CRP, IL-6, and D-dimer.

Interestingly, the CD4 TEM and CD8 TEM populations showed a continuous decrease with the disease severity, whereas the naïve populations showed a surge in the most severe cases (probably, due to the mobilization of naïve cells which did not contribute to improved outcome (figure 10).

In the correlogram between laboratory biomarkers and cell phonotypes there is a negative correlation of APRs and T-cell populations except for Th1- and Th17-activated T cells. There is, therefore, an inverse correlation between inflammation and the T-cell subsets that drive the adaptive immune response; there is a strong negative correlation of age with CD8-naïve T cells, which is critical for the immune response to the virus; these changes reveal the deep dysregulation of lymphocyte biology in COVID-19 patients (figure 11S), The positive correlations between APR and B cells could be interpreted as resulting from an accelerated recruitment of naïve B cells to the switching stage; furthermore, there is a steeper reduction in non-classical monocytes and a reduction in their DR expression. This fits well with the high mortality rate seen among patients with <2% monocytes and with the lack of changes in the sCD163 (see the section titled Cytokines), which is a marker of M2 macrophages. The ROC curves of CD3+CD62L (n) naïve T cells had an AUC of 0.74, with a sensitivity and specificity of 66.7% and 72%, respectively, for severity (table 5).

References:

- 1 Jones BE, Maerz MD, Buckner JH. IL-6: a cytokine at the crossroads of autoimmunity. *Curr. Opin. Immunol.* 2018; **55**: 9–14.

Table 1S. Patients excluded from HUVH cohort.

Groups	Number of patients	Sex (male/female ratio)	Age median (IQR)	28-day mortality (%)
Nosocomial	57	57.9%	67 (60–75)	36.8%
Severe oncological disease	35	65.7%	66 (58–74.25)	34.3%
Pregnancy	15	NA	76 (76–76)	0.0%
Transplanted	13	84.6%	53 (51–55)	46.2%
Severe haematological disease	11	36.4%	37 (30.75–44.25)	36.4%
Paediatric	11	36.4%	75 (74.5–75.5)	0.0%
Autoimmune disease	7	28.6%	65 (56.5–71)	14.3%
Referred for ECMO	7	71.4%	61 (59.5–69)	0.0%
Primary immunodeficiency	1	0.0%	44 (NA)	0.0%
Other severe disease	1	0.0%	49 (NA)	0.0%
Total	158			27.8%

Patients who were excluded from the HUVH cohort and their pathology. ECMO, ExtraCorporeal Membrane Oxygenation; NA, Not Applicable.

Table 2S. Monoclonal Antibodies used in in the flowcytometric phenotypic analysis

	ISOTYPE	CLONE
General lymphocyte populations		
CD45-FITC/CD8-PE/CD4-ECD/CD3-PC5	IgG2b / IgG1 / IgG1 / IgG1 mouse	B3821F4A/SFC112T4D11/SFC121Thy2D3/UCHT1
CD45-FITC/CD56-PE/CD19-ECD/CD3-PC5	IgG2b / IgG1 / IgG1 / IgG1 mouse	B3821F4A/SFC112T4D11/SFC121Thy2D3/UCHT1
T- Lymphocyte populations		
CXCR3/CD183 AF488	IgG1 mouse	G025H7
CCR7/CD197 PE	IgG2a mouse	G043H7
CD45RA ECD	IgG1 mouse	ALB11
CCR6/CD196 PC7	IgG2a mouse	B-R35
CD4 APC	IgG1 mouse	13B8.2
CD8 APC700	IgG1 mouse	SFC121Thy2D3 (T8)
CD3 APC750	IgG1 mouse	UCHT1
HLADR PB	IgG1 mouse	Immu-357
CD45 KRO	IgG1 mouse	J.33
Recent thymic emigrants		
CD31 FITC	IgG1 mouse	5.6E
CD62L PE	IgG1 mouse	DREG56
CD3 ECD	IgG1 mouse	UCHT1
CD27 PC7	IgG1 mouse	1A4CD27
CD4 APC	IgG1 mouse	13B8.2
CD45RA PB	IgG1 mouse	2H4LDH11LDB9 (2H4)
CD45 KRO	IgG1 mouse	J.33
T-regulatory cells		
CD45RO FITC	IgG2a mouse	UCHL1
CD25 PE	IgG2a mouse	B1.49.9
CD3 ECD	IgG1 mouse	UCHT1
CCR4/ CD194 PC7	IgG1 mouse	1G1
CD4 APC	IgG1 mouse	13B8.2
CD127 APC750	IgG1 mouse	R34.34
HLADR PB	IgG1 mouse	Immu-357
CD45 KRO	IgG1 mouse	J.33
DC/Monocytes/NK		
CD16 FITC	IgG1 mouse	3G8
CD11c PE	IgG1 mouse	BU15
CD3 ECD	IgG1 mouse	UCHT1
CD19 ECD	IgG1 mouse	J3-119
CD20 ECD	IgG2a mouse	B9E9(HRC20)
CD56 PC7	IgG1 mouse	N901 (NKH-1)
CD123 APC	IgG1 mouse	SSDCLY107D2
CD14 APC750	IgG1 mouse	RM052
HLADR PB	IgG1 mouse	Immu-357
B Lymphocytes		
IgD FITC	IgG2a mouse	IA6-2
CD21 PE	IgG1 mouse	BL13

CD19 ECD	IgG1 mouse	J3.119
CD27 PC7	IgG1 mouse	1A4CD27
CD24 APC	IgG1 mouse	ALB9
CD38 APC750	IgG1 mouse	LS198-4-3
IgM PB	IgG1 mouse	SA-DA4
CD45 RO	IgG1 mouse	J.33

DC, dendritic cells; NK, Natural Killer.

Table 3S. Distribution of comorbidities among the severity categories and demographics and hospitalization data in the HUVH cohort

Comorbidities	n (%)	Age (mean)	Male	Female	M/F %	DFSO (days) [mean ± SD]	LOS (days) [mean ± SD]	Mortality (%)	Mild (n)	Moderate (n)	Severe (n)	Deceased (n)
0	546 (34·6%)	51·6	305	241	0·56	7·8 ± 4·4	14·9 ± 22·4	2·9%	40	400	89	16
1	431 (27·3%)	61·6	240	191	0·56	8·1 ± 5·4	17·1 ± 24·0	12·8%	15	273	88	55
2	303 (19·2%)	71·1	165	138	0·54	6·7 ± 4·7	17·6 ± 23·5	28·4%	9	162	46	86
3	186 (11·8%)	71·2	101	85	0·54	6·3 ± 4·6	24·2 ± 30·5	28·5%	5	93	35	53
4	88 (5·6%)	72·1	52	36	0·59	5·2 ± 3·9	20·2 ± 26·4	39·8%	2	31	20	35
5–7	25 (1·6%)	73·7	17	8	0·59	5·20 ± 3·8	33·9 ± 32·9	40·0%	0	6	4	10

FSO, days from symptom onset; LOS, length of stay; n, number. For comorbidities considered, see text

Table 4S. Demographics and hospitalization data by severity categories of the HUVH cohort.

Severity among patients (n = 1579)	Mild	Moderate	Severe	Deceased	Mild vs. Moderate (Adj. p-values)	Mild vs. Severe (Adj. p-values)	Mild vs. Deceased (Adj. p-values)	Moderate vs. Severe (Adj. p-values)	Moderate vs. Deceased (Adj. p-values)	Severe vs. Deceased (Adj. p-values)	Multiple comparison (Adj. p-values)
Patients	71 (4.5%)	969 (61.4%)	284 (18.0%)	255 (16.1%)							
Age median (IQR)	47 (36–69)	58 (48–72)	55 (51–68)	82 (74–87)	7.55E-04	7.50E-03	4.94E-36	3.80E-01	1.65E-72	2.28E-53	<0.001
Female n (%)	44 (62.0%)	446 (46.1%)	101 (35.6%)	107 (39.6%)	1.32E-02	7.60E-05	3.00E-03	1.73E-03	2.6E-01	1.3E-01	<0.001
DFSO median (IQR)	8 (5–10)	7 (5–10)	7 (4–9)	5 (2–7)	5.10E-01	4.69E-02	7.42E-08	6.83E-03	9.50E-20	1.09E-07	<0.001
LOS median (IQR)	2.0 (2–2)	5 (2–11)	35 (17–59)	7 (4–11)	1.53E-06	8.74E-41	1.57E-08	7.93E-69	1.73E-02	5.35E-32	<0.001
Disease duration median (IQR)	10 (8–16)	13 (9–21)	41 (25–66)	12 (9–18)	1.01E-02	1.92E-24	5.96E-01	2.44E-53	4.95E-04	5.30E-50	<0.001
Composite Morbidity (mean ± SD)	0 (0–1)	1 (0–2)	1 (0–2)	2 (1)	2.00E-02	2.00E-04	<1.0E-10	9.9E-04	1.00E-10	1.00E-10	<0.001

Statistical comparisons include univariate comparisons, using Kruskal–Wallis with the two-stage step-up method of Benjamini and Hochsberg for the adjustment of the false-discovery rate. IQR, 25–75 interquartile range; DFSSO, days from symptom onset; LOS, length of stay.

Table 4S. Demographics and hospitalization data by severity categories of the HUVH cohort

Severity among patients (n = 1579)	Mild	Moderate	Severe	Deceased	Mild vs. Moderate (Adj. p-values)	Mild vs. Severe (Adj. p-values)	Mild vs. Deceased (Adj. p-values)	Moderate vs. Severe (Adj. p-values)	Moderate vs. Deceased (Adj. p-values)	Severe vs. Deceased (Adj. p-values)	Multiple comparison (Adj. p-values)
Patients	71 (4.5%)	969 (61.4%)	284 (18.0%)	255 (16.1%)							
Age median (IQR)	47 (36–69)	58 (48–72)	55 (51–68)	82 (74–87)	7.55E-04	7.50E-03	4.94E-36	3.80E-01	1.65E-72	2.28E-53	<0.001
Female n (%)	44 (62.0%)	446 (46.1%)	101 (35.6%)	107 (39.6%)	1.32E-02	7.60E-05	3.00E-03	1.73E-03	2.6E-01	1.3E-01	<0.001
DFSO median (IQR)	8 (5–10)	7 (5–10)	7 (4–9)	5 (2–7)	5.10E-01	4.69E-02	7.42E-08	6.83E-03	9.50E-20	1.09E-07	<0.001
LOS median (IQR)	2.0 (2–2)	5 (2–11)	35 (17–59)	7 (4–11)	1.53E-06	8.74E-41	1.57E-08	7.93E-69	1.73E-02	5.35E-32	<0.001
Disease duration median (IQR)	10 (8–16)	13 (9–21)	41 (25–66)	12 (9–18)	1.01E-02	1.92E-24	5.96E-01	2.44E-53	4.95E-04	5.30E-50	<0.001
Composite Morbidity (mean ± SD)	0 (0–1)	1 (0–2)	1 (0–2)	2 (1)	2.00E-02	2.00E-04	<1.0E-10	9.9E-04	1.00E-10	1.00E-10	<0.001

Statistical comparisons include univariate comparisons, using Kruskal–Wallis with the two-stage step-up method of Benjamini and Hochsberg for the adjustment of the false-discovery rate. IQR, 25–75 interquartile range; DFSSO, days from symptom onset; LOS, length of stay.

Table 5S. Pairwise comparison of variables for maximal severity in four categories

	Severity categories				Multiple comparisons						
Variables	Mild (n = 71) Median (IQR)	Moderate (n = 969) Median (IQR)	Severe (n = 275) Median (IQR)	Deceased (n = 255) Median (IQR)	Mild vs. Moderate (exact p-value)	Mild vs. Severe (exact p-value)	Mild vs. Deceased (exact p-value)	Moderate vs. Severe (exact p-value)	Moderate vs. Deceased (exact p-value)	Severe vs. Deceased (exact p-value)	Global comparison (Adj. p-value)
Age	47 (36–69)	58 (48–72)	55 (51–68)	82 (74–87)	7.55E-04	7.50E-03	4.943E-36	0.380	1.65E-72	2.28E-53	<0.001
Morbidity Index (mean ± SD)	0 (0–1)	1 (0–2)	1 (0–2)	2 (1)	2.00E-02	2.00E-04	<1.0E-10	9.9E-04	1.00E-10	1.00E-10	<0.001
INFLAMMATION RELATED BIOMARKERS (IRFBS)											
Blood											
Hb (12–15 g/dL)	13.8 (12.9–14.5)	13.7 (12.5–14.6)	13.5 (12.4–14.6)	12.7 (11.4–13.8)	2.80E-01	0.100	7.63E-07	0.230	4.70E-14	3.71E-07	<0.001
WBC (4–11 10 ⁹ /L)	6.3 (5.1–8.0)	6.4 (4.7–8.8)	7.2 (5.3–10.1)	7.6 (5.3–10.7)	9.77E-01	0.026	6.20E-03	1.38E-05	1.33E-07	0.435	<0.001
Neutrophils (40–80%)	65 (57.0–72.4)	74 (66.7–80.2)	81.3 (73.7–86.7)	83 (75.4–88.0)	4.99E-09	1.17E-24	4.68E-27	3.29E-21	2.51E-25	0.389	<0.001
Neutrophils (2–7 10 ⁹ /L)	4.02 (3.11–5.45)	4.56 (3.35–6.16)	5.59 (3.94–8.15)	6.12 (3.99–8.65)	3.98E-02	2.93E-07	2.56E-08	6.42E-10	2.89E-12	0.491	<0.001
Lymphocytes (20–50%)	24.9 (19.1–34.0)	17.4 (12.5–24.1)	12.3 (7.9–18.5)	10.3 (7.1–16.7)	2.64E-09	2.27E-23	3.46E-29	4.98E-18	5.02E-28	0.045	<0.001
Lymphocytes (1.2–3.5 10 ⁹ /L)	1.65 (1.22–2.26)	1.08 (0.81–1.44)	0.87 (0.62–1.14)	0.78 (0.55–1.04)	1.24E-11	2.02E-23	9.68E-31	7.62E-13	1.01E-23	0.014	<0.001
Monocytes (0.1–1.0%)	8.1 (6.7–9.4)	7.1 (5.4–9.0)	5.2 (3.8–7.3)	5.4 (3.5–7.8)	5.90E-03	5.67E-13	1.08E-10	4.14E-19	8.00E-14	0.262	<0.001
Monocytes (0.1–1 0 ⁹ /L)	0.51 (0.38–0.71)	0.45 (0.32–0.60)	0.37 (0.26–0.54)	0.4 (0.28–0.56)	7.40E-03	1.00E-06	6.85E-05	3.74E-06	0.004	0.178	0.19
Eosinophils (0.0–5.0%)	0.4 (0.0–1.0)	0 (0.0–0.2)	0 (0–0.1)	0 (0–0)	1.38E-14	2.01E-21	4.36E-23	5.32E-06	1.24E-07	0.480	<0.001
Eosinophils (0.0–0.5 10 ⁹ /L)	0.02 (0–0.06)	0 (0–0.01)	0 (0–0.01)	0 (0–0)	8.14E-16	7.26E-17	5.33E-19	0.096	5.00E-03	0.328	<0.001
Basophils (0.0–0.2 10 ⁹ /L)	0.02 (0.01–0.03)	0.02 (0.01–0.02)	0.02 (0.01–0.03)	0.02 (0.01–0.03)	6.68E-04	0.018	0.021	0.138	0.121	0.945	0.003
NLR	2.64 (1.60–3.61)	4.27 (2.76–6.41)	6.53 (4.02–10.85)	8.11 (4.3–12.51)	1.44E-09	4.26E-24	1.49E-28	9.14E-19	7.17E-26	0.098	<0.001
Platelets (140–400 10 ⁹ /L)	223 (167–285)	200 (158–252)	200 (154–256)	175 (133–229)	2.60E-02	0.017	5.44E-06	0.517	1.76E-06	0.001	<0.001

Clinical Chemistry & Immunology											
APR and related parameters											
CRP (0.03–0.5 mg/dL)	1.49 (0.50–4.62)	7.46 (3.18–13.16)	15.53 (7.91–22.43)	17.21 (9.76–25.08)	2.05E-12	1.73E-30	2.64E-33	9.42E-21	7.09E-23	0.116	<0.001
IL-6 (0.0–4.3 pg/mL)	10 (4–25)	37 (21–63)	80 (47–127)	90 (55–163)	8.92E-13	5.41E-35	7.07E-38	2.09E-27	1.21E-28	0.092	<0.001
Ferritin (25–400 ng/mL)	247 (104.5–441)	501 (269–935)	795 (474–1478)	671 (334–1217)	3.67E-08	2.12E-17	3.10E-10	2.23E-10	0.007	0.045	<0.001
LDH (0–248 UI/L)	243 (209–284)	318 (267–391)	434 (330–564)	429 (342–523)	3.11E-11	3.43E-29	2.32E-24	6.30E-21	4.48E-13	0.902	<0.001
Triglycerides (43–200 mg/dL)	121 (89.7–159.5)	120 (91–158.5)	122.5 (93.5–172.8)	126.5 (93.5–158.8)	0.953	0.723	0.681	0.533	0.558	0.897	0.882
Coagulation factors											
Fibrinogen (2.39–6.1 g/L)	4.37 (4.00–4.83)	5.12 (4.48–5.92)	5.45 (4.73–6.28)	4.94 (4.23–5.90)	2.96E-09	1.26E-13	8.47E-06	2.04E-04	7.95E-02	1.48E-05	<0.001
D dimer (0–243 ng/mL)	168 (115–284)	241 (160–401)	303 (192–549)	477 (292.5–861)	9.90E-04	3.24E-08	3.58E-17	3.78E-06	4.93E-20	1.38E-05	<0.001
Prothrombin time INR (0.7–1.3)	1.03 (0.99–1.11)	1.1 (1.03–1.17)	1.11 (1.03–1.20)	1.14 (1.05–1.30)	4.17E-05	2.89E-05	2.33E-10	0.423	1.38E-06	0.001	<0.001
ORGAN DAMAGE RELATED BIOMARKERS (ODBR)											
Liver function test											
AST (12–50 IU/L)	27 (22–38)	38 (29–56)	47 (35–71)	45 (31–68)	2.20E-07	3.27E-14	6.19E-11	5.45E-08	6.48E-04	0.117	<0.001
ALT (19–50 IU/L)	22 (13–42)	29 (19–51)	34 (22–54)	22.5 (15–35)	1.80E-03	6.13E-05	0.993	0.030	3.37E-08	7.53E-10	<0.001
AST/ALT (0.5–1)	1.30 (0.87–1.69)	1.30 (1.00–1.71)	1.47 (1.14–1.86)	1.92 (1.43–2.60)	0.427	0.008	2.14E-12	2.00E-04	8.10E-33	1.37E-11	<0.001
Direct bilirubin (0.1–0.57 mg/dL)	0.25 (0.22–0.32)	0.3 (0.24–0.37)	0.31 (0.25–0.42)	0.35 (0.27–0.46)	4.76E-04	1.39E-05	7.14E-08	0.033	1.27E-04	0.067	<0.001
Total bilirubin (0.3–1.2 mg/dL)	0.49 (0.4–0.61)	0.57 (0.45–0.74)	0.57 (0.42–0.775)	0.62 (0.47–0.85)	4.50E-03	0.017	2.28E-04	0.726	4.16E-02	0.048	0.002
Kidney function test											
Urea (17–43 mg/dL)	29.5 (23.0–35.7)	32 (24.0–45.0)	36 (26.0–50.0)	58 (42.0–87.0)	0.077	0.001	1.30E-20	2.50E-03	6.95E-47	1.92E-19	<0.001
Creatinine (0.67–1.17 mg/dL)	0.72 (0.59–0.86)	0.78 (0.64–0.93)	0.85 (0.70–1.02)	1.01 (0.78–1.36)	0.030	1.82E-05	6.43E-14	1.02E-05	1.12E-24	6.32E-07	<0.001
GFR (>75 mL/1.73 m ²)	90 (90–90)	90 (88–90)	90 (79–90)	57 (36–79)	0.206	5.75E-04	3.06E-65	2.36E-06	1.42E-196	1.5E-112	<0.001

AST, Aspartic Amino Transferase; ALT, Alanine Amino Transferase; CRP; C Reactive Protein; GFR, Glomerular Filtration Rate; Hb, Hemoglobin; NLR, Neutrophil Lymphocyte Ratio; WBC, White Blood cell Count.

Table 6S. Median values of laboratory variables and the proportion out of the normal range and relation with mortality

	n	Median (IQR)	ONR n (%)	Mortality n (%)	p-value	OR
Blood						
Hb	1550	13.5 (12.3–14.5)	590 (38.06%)	107 (18.1%)	n.s.	
<12			272	83 (30.5%)	3.00E-10	2.77
>15			246	21 (8.5%)	1.16E-04	2.38
Leukocytes	1550	6.6 (5.08–8.76)	344 (22.19%)	86 (25.0%)	5.63E-06	2.00
<4.0 e3			166	28 (16.9%)	n.s.	
>11.0 e3			178	58 (32.6%)	2.30E-08	2.83
Neutrophils, %	1550	76.1 (68–83.2)	550 (35.48%)	153 (27.8%)	1.00E-10	
<40%			9	1 (11.1%)	n.s.	
>80%			541	152 (28.1%)	1.00E-10	3.33
Top 10% cutoff			156	58 (37.2%)	1.00E-10	3.53
Bottom 10% cutoff			157	15 (9.6%)	1.24E-02	2.00
Neutrophils, n	1550	4.9 (3.5–6.8)	415 (26.77%)	114 (27.5%)	1.00E-10	2.61
<2.0 e3			43	8 (18.6%)	n.s.	
>7.0 e3			372	106 (28.5%)	1.0E-10	2.69
Top 10% cutoff, 88.4%			156	58 (37.2%)	1.0E-10	3.53
Top 5% cutoff, 90.6			77	36 (46.8%)	2.0E-10	4.95
Lymphocytes, %	1550	16.0 (10.5–23.0)	1031 (66.52%)	211 (20.5%)	3.7E-09	2.58
<20%			1022	210 (20.5%)	2.8E-09	2.59
>50%			9	1 (11.1%)	n.s.	
Bottom 10%			157	54 (34.4%)	n.s.	
Bottom 5%			77	34 (44.2%)	2.58E-02	1.61
Lymphocytes, n	1550	1.0 (0.7–1.4)	993 (64.06%)	207 (20.8%)	1.1E-09	2.61
<1.2 e3			985	206 (20.9%)	8.00E-10	2.61
>3.5 e3			8	1 (12.5%)	n.s.	
Bottom 10%			163	60 (36.8%)	1.00E-10	3.50
Bottom 5%			87	32 (36.8%)	3.95E-06	3.18
Monocytes, %	1551	6.7 (4.8–8.8)	184 (11.86%)	37 (20.1%)	n.s.	
<2%			25	12 (48.0%)	2.39E-04	4.80
>11%			159	25 (15.7%)	n.s.	
<0.1 e3			1	1 (100.0%)	n.s.	
>1.0 e3			67	16 (23.9%)	n.s.	
Eosinophils, % and n	1551	0.0 (0–0.3)	16 (1.03%)	2 (12.5%)	n.s.	
>5%			11	1 (9.1%)	n.s.	
>0.05 e3			5	1 (20.0%)	n.s.	
Basophils, n	1551	0.0 (0–0)	1	1 (100.0%)	n.s.	

>0.02 e3		0.02 (0.01 -0.03)	1	1 (100·0%)	n.s.	
Platelets	1550		311	83 (26·7%)	3·96E-04	2·21
<140 e3			251	72 (28·7%)	1·46E-04	2·41
>400 e3			60	11 (18·3%)	n.s.	
APR and related parameters						
CRP (N 0·03-0·5 mg/dL)	1226	8·9 (3·8–16·6)	1219 (99·43%)	146 (11·98%)	n.s.	
Top decile cutoff, 20			122	37 (30·33%)	6·40E-09	3·93
Top 5% cutoff, 30			62	24 (38·71%)	2·44E-08	5·35
IL-6 (0·0–4·3 pg/mL)	1259	45·0 (24–80)	1029 (81·73%)	146 (14·19%)	1·07E-02	Infinity
Top decile cutoff, 140			125	47 (37·60%)	1·00E-10	6·30
Top 5% cutoff, 30 219·5			62	24 (38·71%)	1·24E-08	5·57
Ferritin (25-400 ng/mL)	1128	539·0 (283·5–1011)	732 (64·89%)	77 (10·52%)	n.s.	
Top decile cutoff, 1667			108	12 (11·11%)	n.s.	
Top 5% cutoff, 2279			57	10 (17·54%)	n.s.	
Triglycerides (43-200 mg/dL)	620	121·0 (92 -161)	78 (12·58%)	6 (7·69%)	n.s.	
Top 10% cutoff, 224 mg/dL			63	4 (6·35%)	n.s.	
Top 5% cutoff, 269 mg/dL			50	1 (2·00%)	n.s.	
LDH (0-248 UI/L)	1128	336·0 (271–421)	935 (82·89%)	98 (10·48%)	0·04	1·94
Top 5% cutoff, 661 UI/L			56	14 (25·00%)	4·9E-04	3·43
Coagulation parameters						
Fibrinogen (2·39–6·1 g/L)	1440	5·1 (4·43–5·95)	311 (21·60%)	48 (15·43%)	n.s.	
>6.1			310	48 (15·48%)	n.s.	
<2.4			2	0 (0·00%)	n.s.	
Top decile cutoff, 6·7			146	28 (19·18%)	n.s.	
Top 5% cutoff, 7·22			72	13 (18·06%)	n.s.	
Bottom 5% cutoff, 1.68			73	18 (24·66%)	0·0495	
D-dimer (0-243 ng/mL)	1248	253·0 (168–463)	683 (54·73%)	121 (17·72%)	1·0E-10	4·65
Top decile cutoff, 1074 ng/mL			124	28 (22·58%)	3·1E-04	2·49
Top 5% cutoff, 2352 ng/mL			62	17 (27·42%)	4·0E-04	3·10
Prothrombin time, INR (0·7-1·3)	1445	1·1 (1·03 -1·19)	148 (10·24%)	57 (38·51%)	1·0E-09	3·99
Top decile cutoff, 1·31			148	57 (38·51%)	1·0E-10	3·99
Top 5% cutoff, 1·51			72	30 (41·67%)	9·3E-08	4·12
Bottom 5%			84	12 (14·29%)	n.s.	
Liver function test						
AST (12-50 IU/L)	1560	40·0 (30–60)	532 (34·10%)	109 (20·49%)	4·1E-03	1·50
Top decile cutoff, 92 IU/L			156	39 (25·00%)	4·6E-03	1·78
Top 5% cutoff, 116			79	17 (21·52%)	n.s.	
ALT (19–50 IU/L)	1563	28·0 (1911 -50)	370 (23·67%)	41 (11·08%)	1·1E-03	0·56

Top decile cutoff, 75 UI/dL			162	18 (11·11%)	3·3E-02	0·56
Top 5% cutoff, 106 IU/L			80	5 (6·25%)	8·2E-03	0·32
AST/ALT	1560	1·4 (1·05- 1·8)	1213 (77·76%)			
Top decile cutoff, 2·4			155	74 (47·74%)		
Bilirubin, T (0·3-1·2 mg/dL)	1022	0·6 (0·45 -0·74)	46 (4·50%)	12 (26·09%)	n.s.	
Top decile cutoff, 0·95 mg/dL			103	22 (21·36%)	5·7E-04	2·63
Top 5% cutoff			51	11 (21·57%)	1·7E-02	2·48
Bilirubin, D (0·1-0·57 mg/dL)	982	0·3 (0·24-0·38)	49 (4·99%)	10 (20·41%)	2·0E-02	2·63
Top decile cutoff, 0·64 mg/dL			98	20 (20·41%)	4·0E-04	2·85
Top 5% cutoff			49	10 (20·41%)	2·0E-02	2·63
Kidney function test						
Urea (17-42 mg/dL)	1291	35·0 (35·51)	627 (48·57%)	169 (26·95%)	1·0E-10	4·01
Top decyl cutoff, 78 mg/dL			132	78 (59·09%)	1·0E-10	9·94
Top 5% cutoff, 103 mg/dL			66	41 (62·12%)	1·0E-10	9·28
Bottom 5% cutoff, 5 mg/dL			72	3 (4·17%)	1·1E-03	5·12
Creatinine , >1·17	1576		270 (17·13%)	107 (39·63%)	1·6E-26	5·34
Creatinine, top decile cutoff, 1·42			157	74 (47·13%)	4·2E-23	6·35
GFR <75	1573		499 (31·7%)	326 (65·33%)	4·4E-39	6·42
Bottom 10%, <42·7 mL			154	83 (53·90%)	6·5E-31	8·53

Clinical laboratory variables and the 28-day decess outcome. Mortality among patients who had abnormal and extreme deviations in the laboratory values. The WBC count was at the above upper limit of normal (ULN) in 22·2% of the patients, and the mortality rate of these patients was significantly higher (25·0%) than that of the entire study cohort (16·1%). In most patients, the platelet count was within the normal range; however, when values fell below the lower limit of normal (LLN), the mortality rate was 26·7%, which was significantly higher than that of the HUVH cohort's. The CRP values were outside the normal range in all but one patient; the mortality rate was 30·3% among patients with values in the top 10% (>20 mg/dL), which was significantly higher than the HUVH cohort's. The IL-6 values were above the ULN in 96·8% of cases; the mortality rate was 37·7% in the participants with the top 10% values (>140 ng/dL). LDH and Triglycerides were excluded from other analysis because the excessive and unbalance number or missing data. Comparisons by Fisher exact test, APR, acute-phase reactants; AST, aspartate aminotransferase; ALT, alanine aminotransferase; CRP, C-reactive protein; DFSO, days from symptom onset; GFR, glomerular filtration rate; IL-6, Interleukin-6; Hb, hemoglobin; LDH, lactate dehydrogenase; LOS, length of stay; NLR, neutrophil-to-lymphocyte ratio; OR, Odd Ratio; ONR, out of the normal range.

Table 7S. ROC curve analysis, age stratified

Variable	AUC 40-55 years	95% CI	<i>p</i>	n	AUC 56-65 years	95% CI	<i>p</i>	n	AUC 66-75 years	95% CI	<i>p</i>	n	AUC 76-85 years	95% CI	<i>p</i>	n	AUC >85 years	95% CI	<i>p</i>	n
Age	0·63	0·56-0·68	5·68E-05	417	0·58	0·50-0·66	3·72E-02	281	0·53	0·45-0·59	4·38E-01	306	0·58	0·50-0·64	3·89E-02	247	0·59	0·56-0·68	8·50E-03	320
Comorbidity	0·66	0·60-0·71	2·96E-07	417	0·57	0·50-0·66	8·56E-02	281	0·63	0·56-0·68	2·33E-04	306	0·59	0·51-0·65	1·91E-02	247	0·64	0·60-0·71	3·63E-05	320
SpO2/FiO2	0·76	0·69-0·82	6·85E-11	223	0·77	0·68-0·85	3·70E-02	132	0·79	0·71-0·86	3·82E-10	159	0·72	0·63-0·80	4·37E-06	146	0·75	0·69-0·82	1·20E-08	184
Hb	0·55	0·48-0·61	1·27E-01	411	0·58	0·49-0·65	3·05E-07	286	0·54	0·47-0·60	2·73E-01	304	0·58	0·50-0·64	3·98E-02	247	0·56	0·48-0·61	1·14E-01	315
NLR	0·72	0·66-0·77	3·02E-12	411	0·66	0·58-0·73	5·53E-05	277	0·69	0·62-0·75	3·63E-08	304	0·65	0·61-0·75	2·72E-05	247	0·71	0·66-0·77	9·76E-10	315
Monocytes %	0·64	0·57-0·69	1·81E-05	411	0·65	0·57-0·72	1·85E-04	277	0·69	0·62-0·75	6·28E-08	304	0·69	0·53-0·67	3·33E-07	247	0·64	0·57-0·69	3·82E-05	315
Monocytes n	0·58	0·51-0·64	1·22E-02	411	0·56	0·48-0·63	1·32E-01	277	0·54	0·47-0·61	2·00E-01	304	0·61	0·51-0·65	3·60E-03	247	0·59	0·51-0·64	7·60E-03	315
Eosinophils %	0·64	0·58-0·69	1·08E-05	411	0·60	0·52-0·67	1·56E-02	277	0·60	0·53-0·65	5·80E-03	304	0·59	0·51-0·65	1·61E-02	247	0·63	0·58-0·69	1·65E-04	315
CRP	0·72	0·66-0·77	1·85E-10	359	0·73	0·65-0·80	2·83E-07	235	0·76	0·69-0·82	2·75E-11	240	0·73	0·64-0·80	6·35E-07	165	0·73	0·66-0·77	1·40E-09	274
IL6	0·78	0·72-0·83	1·16E-16	374	0·76	0·68-0·82	3·32E-09	245	0·78	0·72-0·84	5·27E-14	253	0·72	0·64-0·80	1·24E-06	159	0·79	0·72-0·83	6·24E-15	287
Ferritin	0·65	0·58-0·71	3·41E-05	343	0·67	0·58-0·76	2·31E-04	225	0·61	0·53-0·68	9·30E-03	214	0·61	0·51-0·70	2·43E-02	145	0·65	0·58-0·71	1·91E-04	260
D-dimer	0·65	0·59-0·71	1·03E-05	343	0·64	0·55-0·71	1·40E-03	245	0·62	0·55-0·69	1·70E-03	245	0·64	0·55-0·72	1·90E-03	164	0·64	0·59-0·71	2·54E-04	279
AST/ALT	0·61	0·55-0·67	3·90E-04	412	0·59	0·51-0·66	2·12E-02	280	0·64	0·56-0·70	9·90E-05	298	0·61	0·54-0·68	2·70E-03	244	0·59	0·55-0·67	1·05E-02	315
GFR	0·63	0·56-0·68	5·12E-05	416	0·57	0·49-0·64	8·09E-02	281	0·65	0·58-0·71	1·03E-05	305	0·61	0·53-0·67	4·00E-03	245	0·62	0·56-0·68	8·87E-04	319

AST, Aspartic Amino Transferase; ALT, Alanine Amino Transferase; CRP; C Reactive Protein; GFR, Glomerular Filtration Rate; Hb, Hemoglobin; NLR, Neutrophil Lymphocyte Ratio; NC, not calculated, SpO2/FiO2, Oxygen saturation to fraction of inspired oxygen ratio; WBC, White Blood cell Count; CI, Confidence interval 5 to 95%.

Table 8S. Random Forest model applied to HUVH cohort

Random forest models					
Laboratory data model		Clinical data model		Laboratory and clinical data combined model	
Variables	Mean Decrease Gini	Variables	Mean Decrease Gini	Variables	Mean Decrease Gini
IL-6	12·3	Age, years	40·5	Age	13·8
CRP	10·4	Comorbidity Index	11·1	IL-6	9·7
GFR	8·5	Sex	5·6	CRP	7·1
Neutrophils, %	7·6	Cardiovascular conditions	5·2	GFR	6·4
Urea	7·3	Obesity	4·1	Lymphocytes, n	6·3
AST/ALT ratio	7·0	Chronic lung disease	3·5	Neutrophils, %	5·5
NLR	6·5	Diabetes	3·5	Urea	5·3
Lymphocytes, n	6·5	Chronic neurological disease	3·2	Lymphocytes, %	5·2
Fibrinogen	6·4	Chronic kidney disease	2·4	AST/ALT ratio	5·2
Creatinine	6·2	Active non-terminal malignancy	2·3	NLR	5·2
Lymphocytes, %	5·9	Chronic liver disease	1·2	Creatinine	4·7
Creatinine	5·7			D-dimer	4·6
Platelets	5·3			Monocytes, %	4·4
Ferritin	5·2			Fibrinogen	4·4
Monocytes, %	5·2			Ferritin	4·3
AST	5·2			Platelets	4·0
Hb	5·1			AST	4·0
ALT	5·1			Hb	3·8
Prothrombin time, INR	4·7			Monocytes, n	3·8
Monocytes, n	4·5			Prothrombin time, INR	3·7
WBC	4·3			ALT	3·6
Neutrophils, n	4·2			Neutrophils, n	3·6
Eosinophils, %	3·2			WBC	3·3
Eosinophils, n	2·4			Comorbidity Index	2·9
				Eosinophils, %	2·8
				Eosinophils, n	2·6
				Cardiovascular conditions	1·6
				Obesity	0·9
				Chronic lung disease	0·7
				Chronic neurological disease	0·6

				Sex	0·8
				Active non-terminal malignancy	0·4
				Chronic kidney disease	0·2
				Chronic liver disease	0·125

AST, Aspartic Amino Transferase; ALT, Alanine Amino Transferase; CRP, C Reactive Protein; GFR, Glomerular Filtration Rate; Hb, Hemoglobin; NLR, Neutrophil Lymphocyte Ratio; NC, not calculated, SpO2/FiO2, Oxygen saturation to fraction of inspired oxygen ratio; WBC, White Blood Cell count.

For the HUVH simulation the training dataset has 1264 samples and 51 features, and the test dataset had 315 samples and 51 features. Variables with more than 20% missing values were removed, missing value imputation by median. The Mean Decrease Gini value indicates the importance of the variable in the outcome predicted in the model.

Table 9S. Random Forest Model; comparison exploratory and combination of the three cohorts.

Variables	Mean Decrease Gini			
	HUVH cohort	Rank	Combined cohorts	Rank
Urea	16·7	1	31·3	2
IL-6	12·8	2	40·3	1
D-dimer	11·4	3	27·6	3
CRP	8·4	4	20·6	9
Hb	7·0	5	22·5	6
ALT	6·3	6	25·2	4
Platelets	6·2	7	21·2	8
Neutrophils %	6·0	8	23·5	5
NLR	5·8	9	22·1	7
Lymphocytes n	5·8	10	20·3	10
Lymphocytes %	5·6	11	19·3	11
Ferritin	5·4	12	17·8	13
Monocytes n	4·7	13	14·3	16
Protrombin (INR)	4·6	14	15·7	14
Monocytes %	4·6	15	18·1	12
Neutrophils n	4·4	16	15·6	15
Eosinophils %	2·7	17	6·5	18
Basophils n	2·5	18	7·3	17
Eosinophils n	2·3	19	5·3	19

CRP, C Reactive Protein; Hb, Hemoglobin; NLR, Neutrophil Lymphocyte Ratio; WBC, White Blood cell Count; n, number. For the three cohorts' simulation the training dataset had 2600 samples, and the test dataset 519 samples and 19 features. Variables with more than 20% missing values were removed, missing values imputation by median. The Mean Decrease Gini value indicates the importance of the variable in the outcome predicted in model.

Table 10S. Patients included in immunological studies, cytokines and mononuclear cell phenotype by flowcytometry

Patients	HUVH cohort (n = 1579)	Cytokines sub-cohort (n = 74)	p-value	Phenotype sub-cohort (n = 41)	p-value
Age median (IQR)	62 (50–75)	53 (44–63)	<0.0001	50 (41–65)	0.012
Female n (%)	698 (44.2%)	36 (48.70%)	0.45	15 (30.0%)	0.34
Male n (%)	880 (55.7%)	38 (51.40%)		26 (52.0%)	
Mortality					
Overall n (%)	255 (16.1%)	1 (1.40%)	<0.001	3 (7.3%)	0.18
Female n (%)	107 (15.3%)	0 (0)	<0.01	1 (6.7%)	0.48
Male n (%)	148 (16.8%)	1 (2.6%)	<0.05	2 (7.7%)	0.29
DFS0 median (IQR)	7 (4–10)	7 (5–9)	0.73	7 (5–10)	0.09
LOS median (IQR)	6 (2–19)	11 (6–37)	<0.001	6 (2–16)	0.97
Severity					
Mild n (%)	71 (4.40%)	0 (0.0%)	<0.0001	5 (12.2%)	0.06
Moderate n (%)	969 (61.50%)	48 (64.9%)		27 (65.9%)	
Severe n (%)	284 (17.40%)	25 (33.8%)		6 (14.6%)	
Deceased n (%)	255 (16.80%)	1 (1.4%)		3 (7.3%)	
Clinical presentation					
Fever n (%)	1325 (83.9%)	71 (96.0%)	<0.01	36 (87.8%)	0.13
Respiratory symptoms					
Upper airways symptoms n (%)	94 (5.9 %)	4 (5.4%)	0.99	3 (7.3%)	0.73
Lower airway symptoms n (%)	1351 (85.5 %)	64 (86.5%)	0.99	34 (82.9%)	0.65
Pneumonia n (%)	1525 (96.5 %)	74 (1)	0.17	30 (73.2%)	<0.0001
Digestive n (%)	492 (31.1 %)	28 (37.8%)	0.24	15 (36.6%)	0.45
Comorbidities					
Cardiovascular & hypertension n (%)	713 (45.1 %)	23 (31.1%)	0.02	15 (36.6%)	0.34
Chronic lung disease n (%)	278 (17.6 %)	10 (13.5%)	0.43	3 (7.3%)	0.09
Diabetes n (%)	293 (18.5 %)	8 (10.8%)	0.12	11 (26.8%)	0.03
Neurological disease n (%)	227 (14.4 %)	5 (6.8%)	0.08	3 (7.3%)	0.25
Chronic renal disease n (%)	134 (8.5 %)	1 (1.4%)	0.02	1 (2.4%)	0.25
Active non-terminal malignancy n (%)	113 (7.2 %)	5 (6.8%)	0.99	0 (0.0%)	0.11
Obesity n (%)	261 (16.5 %)	24 (32.4%)	1	2 (4.9%)	0.05
Chronic liver disease n (%)	61 (3.9 %)	1 (1.4%)	0.52	3 (7.3%)	0.21
Comorbidity index (mean ± SD)	1.32 (±1.3)	1 (±1.3)	0.03	0.92 (1.14)	0.04

Blood tests					
Neutrophils, % median (IQR)	76·1 (68–83·2)	73·9 (68·4–82·3)	0·69	79·6 (70·6–84·5)	0·25
Neutrophils, n median (IQR)	4·9 (3·5– 6·9)	4·7 (3·3–6·3)	0·37	5·8 (4·1–7·7)	0·17
Lymphocytes, % median (IQR)	16 (10·5–23)	17·5 (12·8–17·5)	0·14	13 (10·5–20·6)	0·32
Lymphocytes, n median (IQR)	1·0 (0·7–1·4)	1·1 (0·83–1·48)	0·23	1·02 (0·77–1·02)	0·63
Monocytes, n median (IQR)	0·4 (0·31–0·6)	0·39 (0·29–0·58)	0·34	0·44 (0·33–0·63)	0·50
Eosinophils, % median (IQR)	0 (0–0·3)	0·0 (0·0–0·2)	0·45	0·10 (0·0–0·45)	0·13
Platelets median (IQR)	197 (154–251)	199 (167–199)	0·46	229 (176–306)	0·007
Clinical Chemistry & Immunology					
APR and related parameters					
CRP median (IQR)	8·9 (3·8–16·6)	7·8 (4·5–18)	0·93	9·9 (6·2–15)	0·97
IL-6 median (IQR)	45·1 (23·80–0)	37 (21–78)	0·24	46 (25–79)	0·86
Ferritin median (IQR)	539 (282·5–1011·5)	581 (284–1,106)	0·44	438 (237–915)	0·63
Coagulation					
D-dimer median (IQR)	263 (168–463·5)	246 (141–420)	0·23	239 (152–375)	0·25

HUVH Cohort: clinical and demographic features of the sub-cohorts from cytokines and blood cell-phenotypic analysis. Univariate comparison using Mann–Whitney U test with adjusted p-values. DFSO, days from symptom onset; LOS, length of stay; NLR, neutrophil-to-lymphocyte ratio; CRP, C-reactive protein; AST, aspartate aminotransferase; ALT, alanine aminotransferase; eGFR, estimated glomerular filtration rate; IL-6, Interleukin-6; LDH, lactate dehydrogenase; Hb, hemoglobin.

SUPPLEMENTARY FIGURES AND LEGENDS

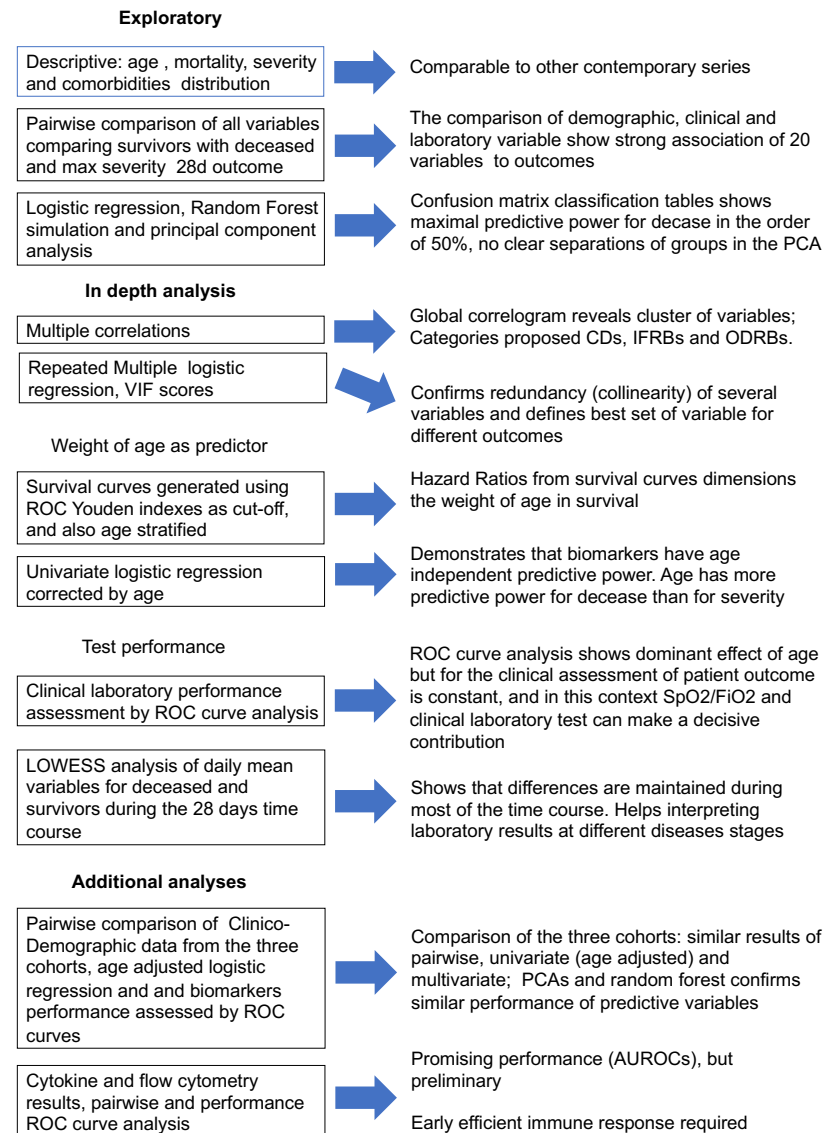


Figure 1 S

Figure 1S. Sequence of statistical analyses and summary of conclusions from every step, left column boxes type of analysis, right column boxes main conclusion. CD, Clinico-demographic; IFRB, Inflammatory Related Biomarkers; ODRB, Organ Damage Related Biomarkers.

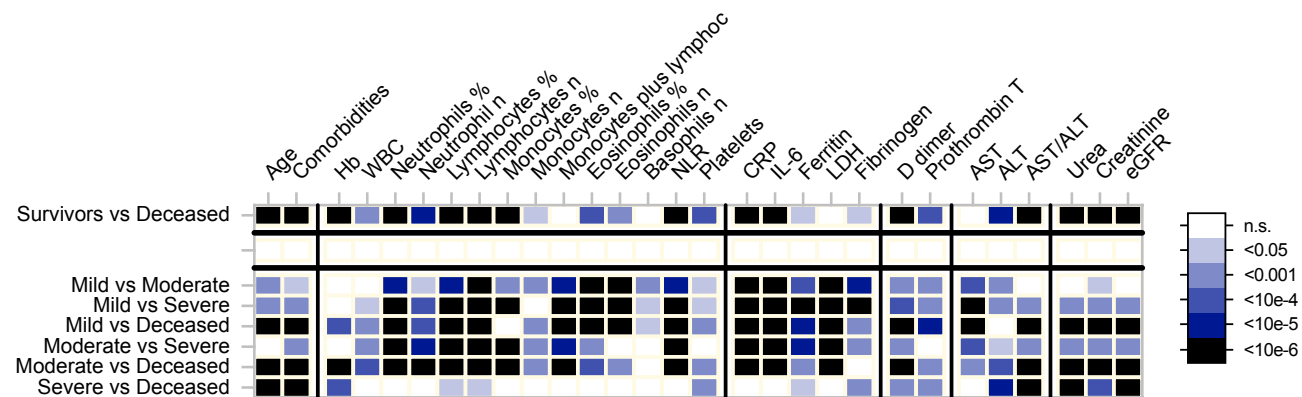


Figure2S

Figure 2S. Heatmap summarizing pairwise comparison; p values scale refers to non-parametric tests (Mann-Whitney and Kruskal-Wallis).

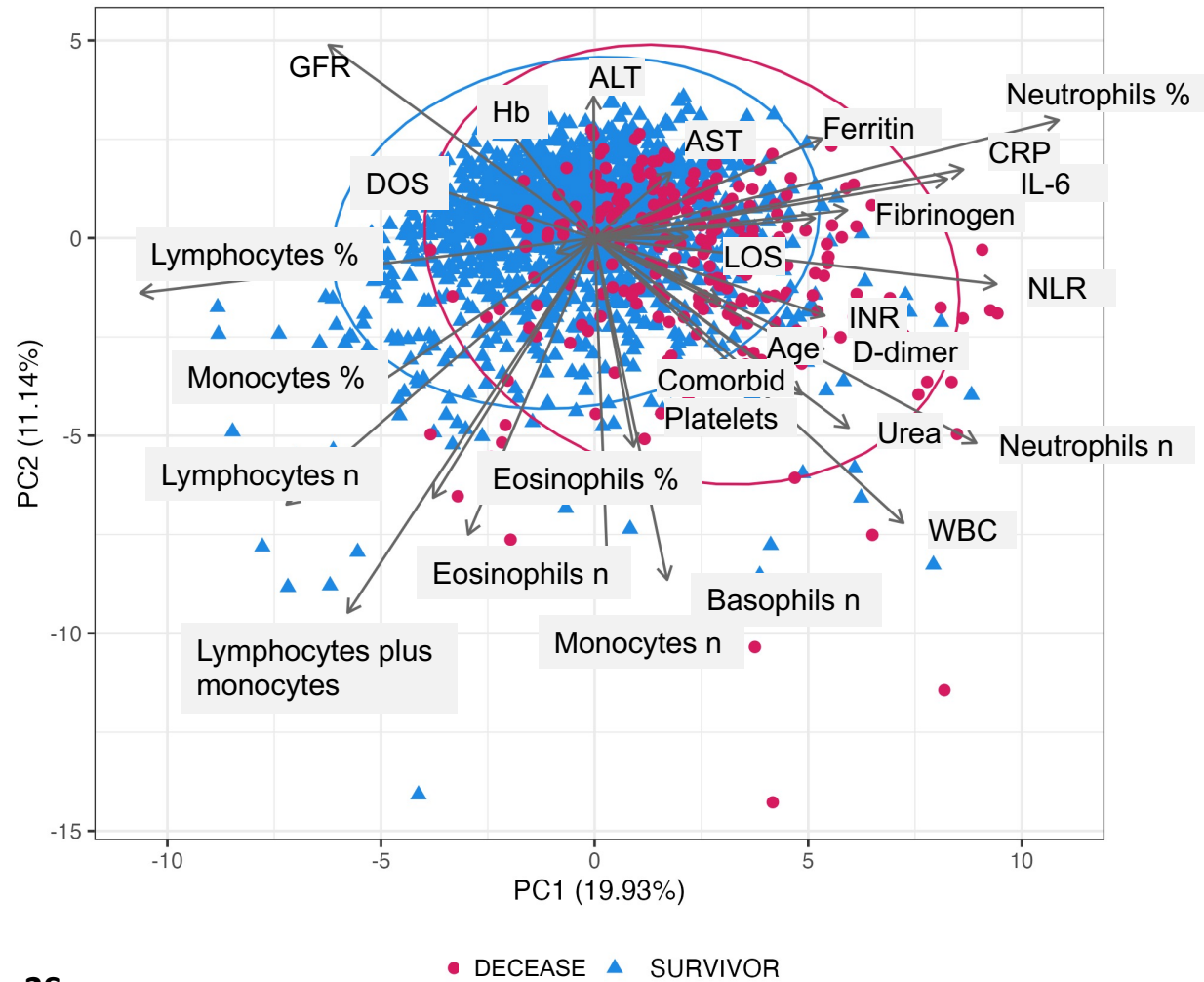


Figure 3S

Figure 3S. Principal component analysis of the main variables, exitus is equivalent to decease. CRP, C-Reactive Protein; GFR, glomerular filtration rate; Hb, haemoglobin; LOS, length of stay at hospital; NLR, neutrophils to lymphocyte ratio; WBC, Whole Blood Count. The variables to the right of the plot contribute to decease, the variables to the left contribute to survival, the length of the vector and the angle is and indicator of the relative contribution to the outcome. Notice how lymphocyte % and n and neutrophils % and n pull to the opposite outcomes.

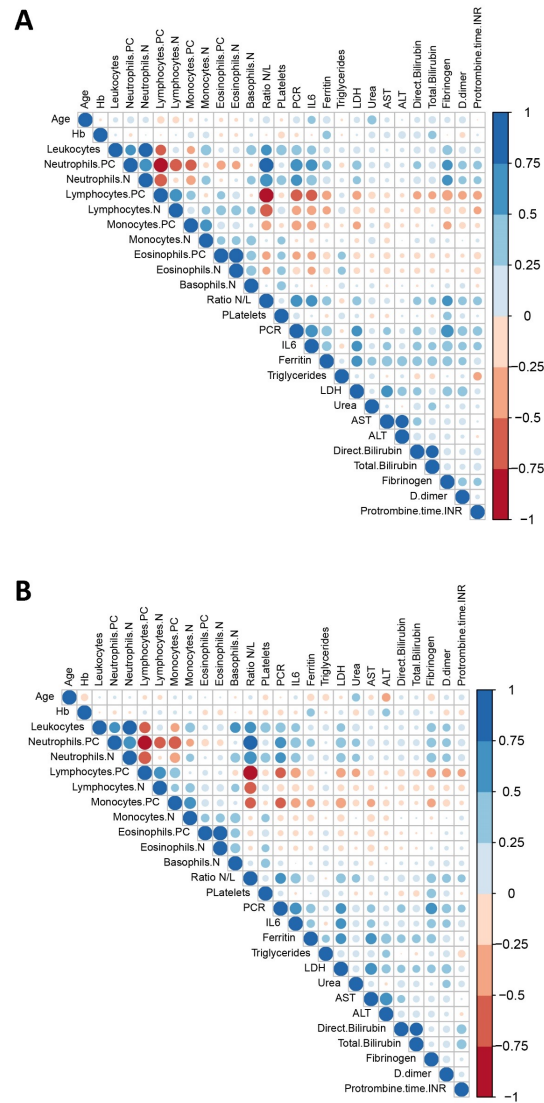


Figure 4S

Figure 4S. Correlograms of the main variables for patients under (A) and over (B) 65 years of age. The main correlations are maintained (see text, “Detailed sequence of statistical analysis...”). The message from this figure is that the network of interactions is not age dependent even if outcome is, this supporting the point that the variables included here miss some crucial pathogenic factors.

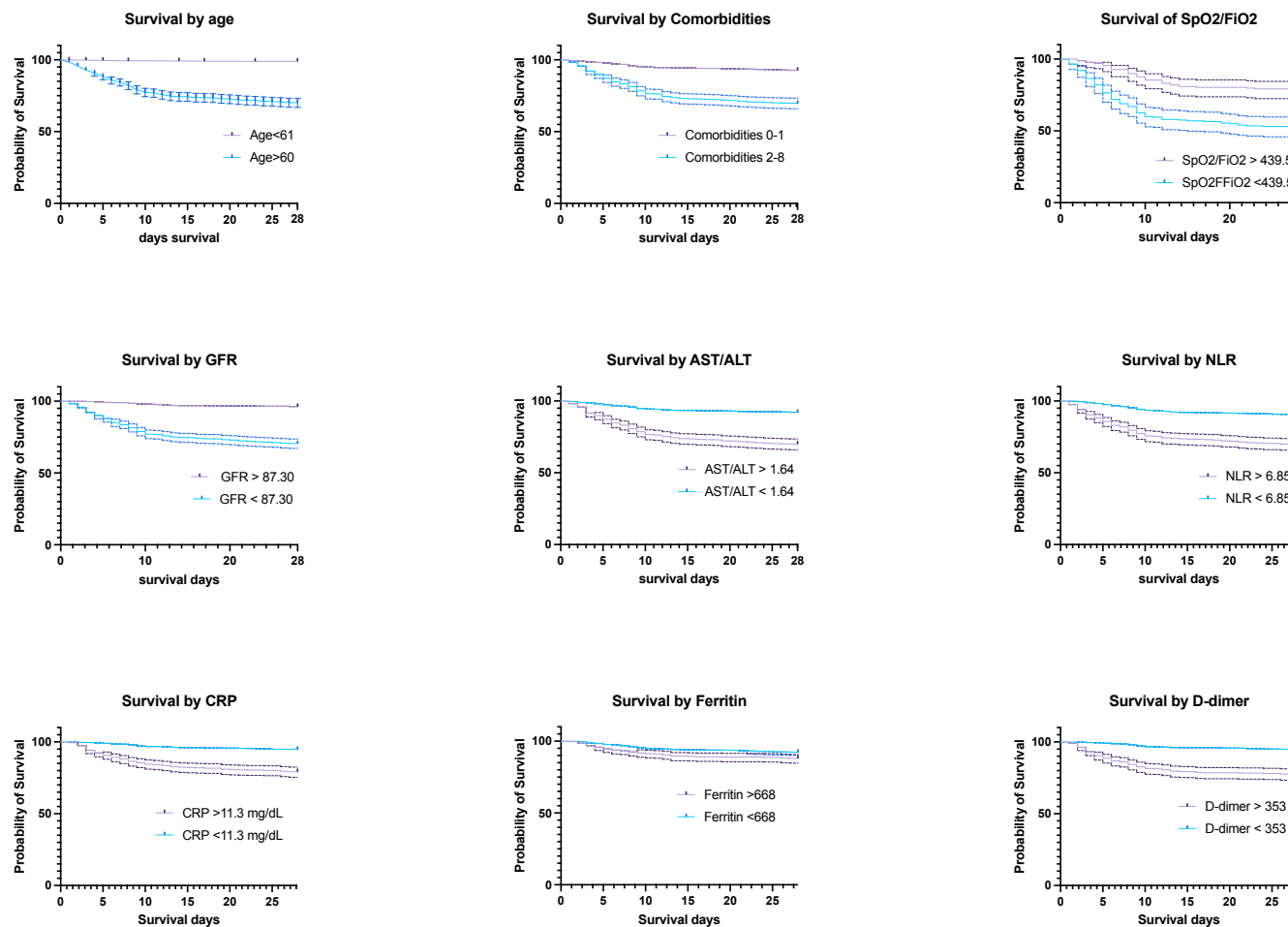


Figure 5S

Figure 5S. Representative Kaplan-Meier survival curves clinicodemographic biomarkers (ODRB) and inflammation related biomarkers (IFRB). Cut off points determined by the Youden index in performance clinical laboratory type of ROC curves. The message from this figure is that ODRB are more closely associated to mortality, even if their variations were not wide and they may be easily missed during clinical management.

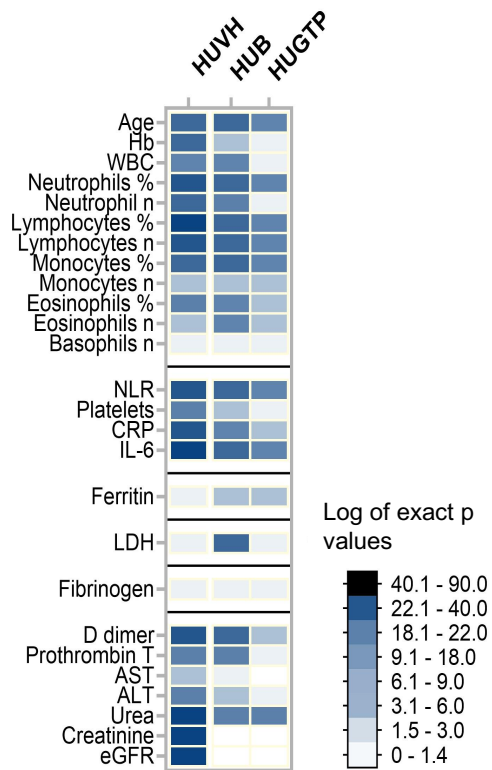


Figure 6S

Figure 6S. Heatmap summarizing pairwise comparison of the survivors vs deceased in the three hospital cohorts; p values scale refer non-parametric comparisons (Mann-Whitney and Kruskal-Wallis). In general p values are not very informative of the weight of each independent variable in the outcome (dependent variable) but when differences are so large, that they are indicative of which variables are more closely associated to outcome, to be corroborated by the subsequent analyses. The heatmap makes visual those differences.

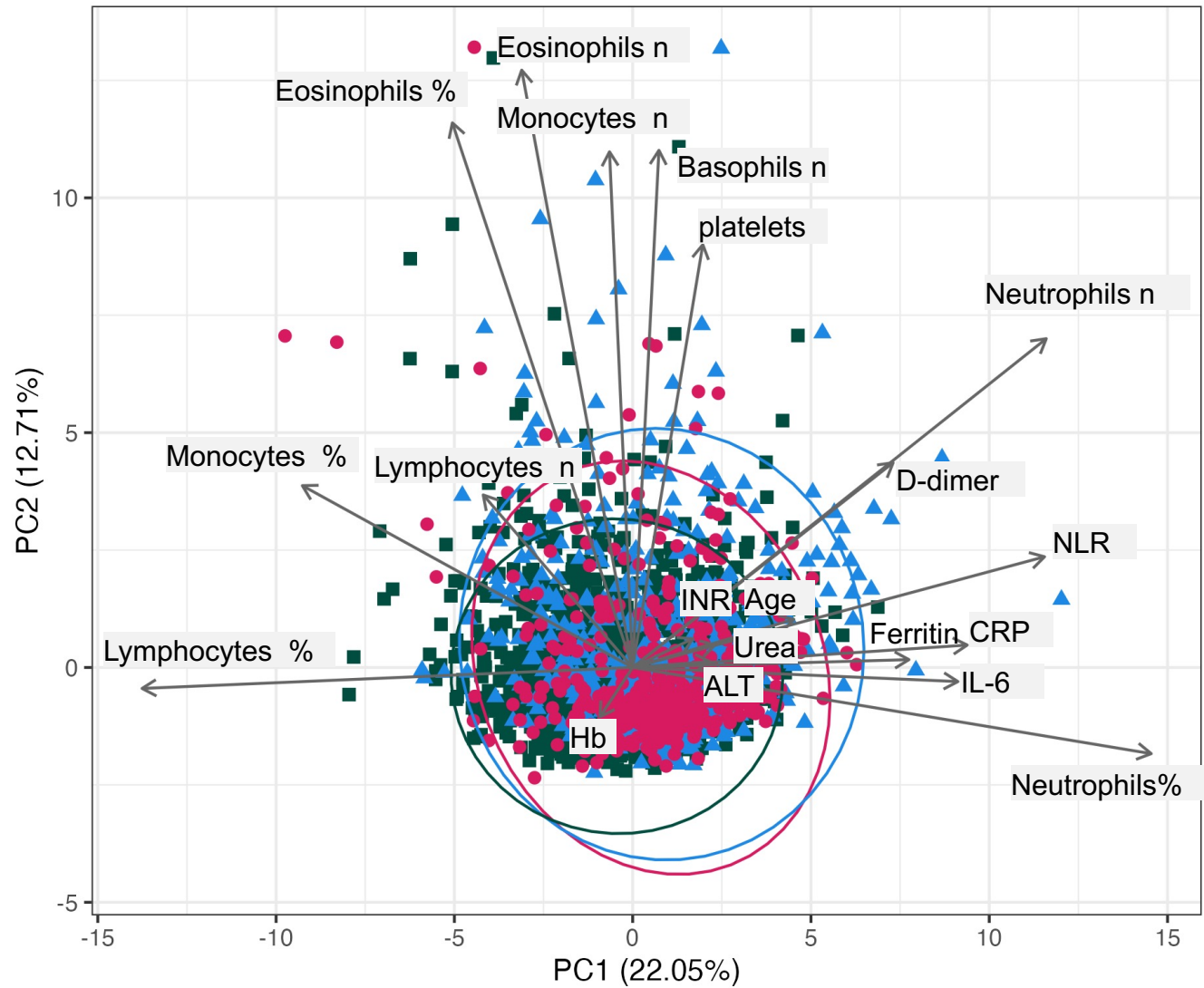


Figure 7S

■ HUVH ▲ HUB ● HUGTP

Figure 7S. PCA analysis representation of the three hospitals cohorts, indicating similar main vectors, with local differences. The plot should be compared with plot figure 3S;. The variables to the right of the plot contribute to decrease, the variables to the left contribute to survival, the length of the vector and the angle is and indicator of the relative contribution to the outcome. Notice how lymphocyte % and n and neutrophils % and n pull to the opposite outcomes

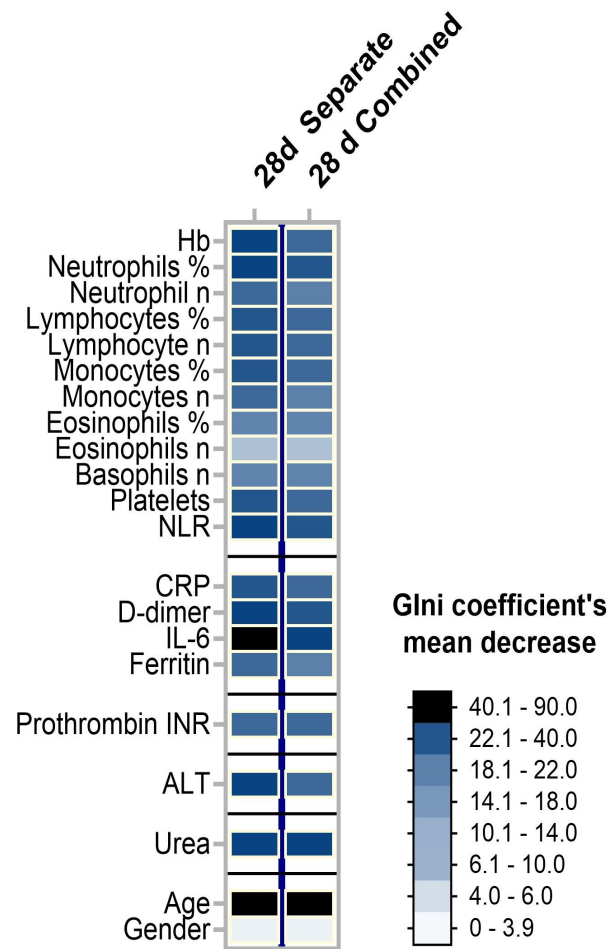


Figure 8S

Figure 8S. Heatmap summarizing the reduction of mean Gini index in the Random Forest model that reflects the importance of each variable in the predictive model. The left column represents the values when laboratory and age plus comorbidities models were run separately and the right column, when run combined; notice that in both, age is the dominant variable.

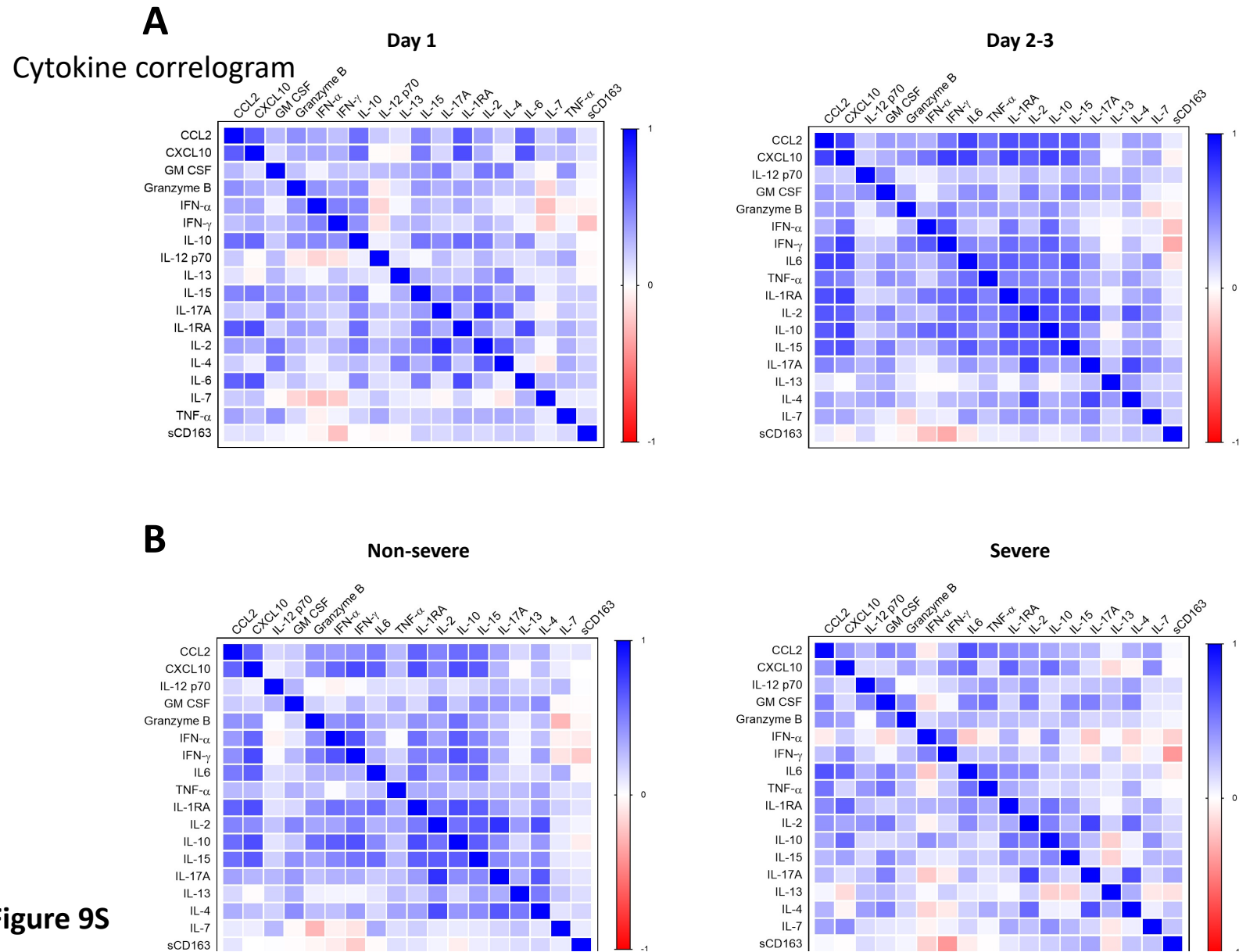


Figure 9S. A, Comparison of correlograms among cytokines initial sample and two/three days late; no major changes are observed. B, Comparison of Non-severe vs severe; some more differences are observed (see supplementary text, subsection cytokines) but not striking, thus indicating that the interval was too short, an indication for future studies.

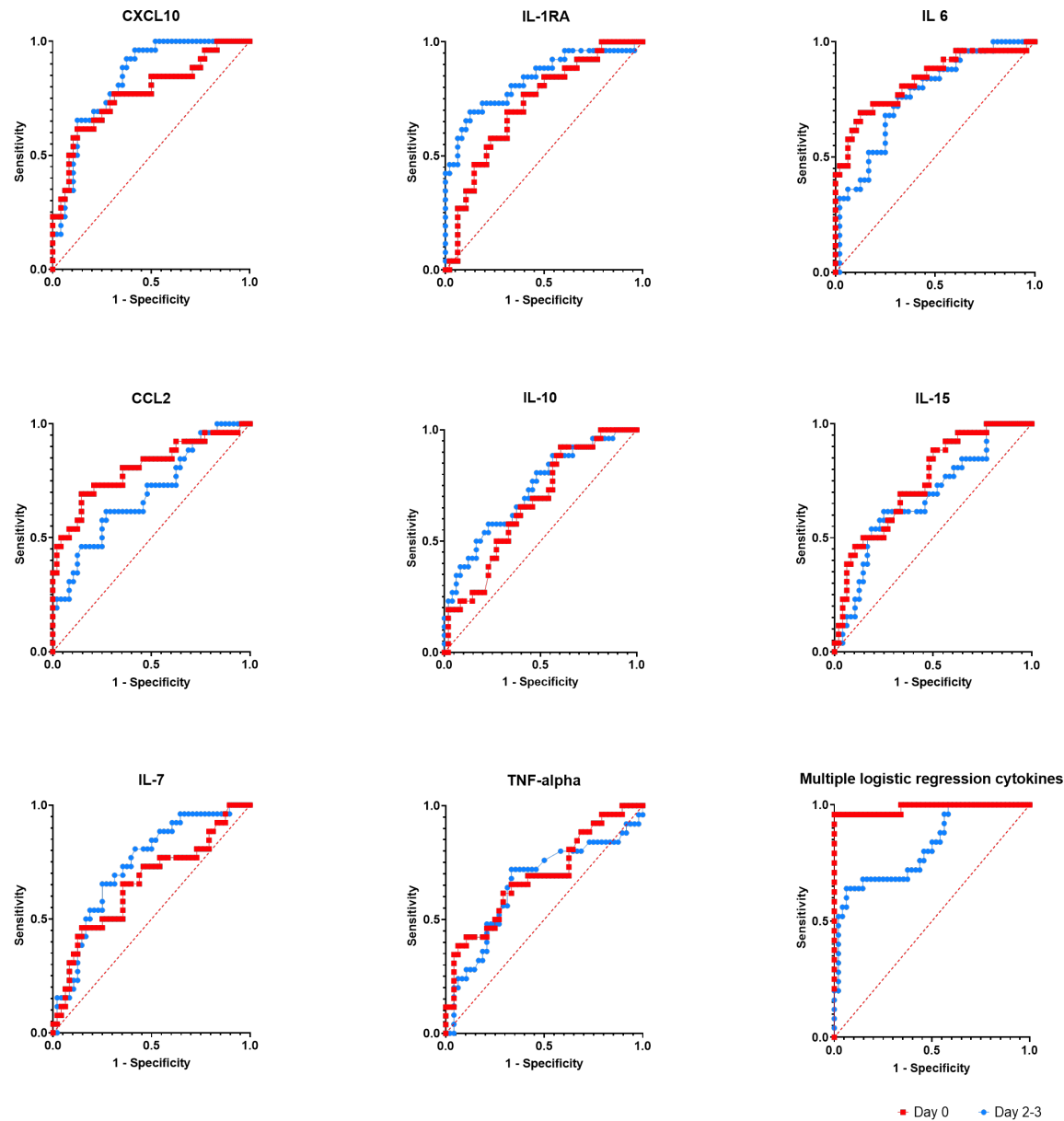


Figure 10S

Figure 10S. Performance of cytokines as clinical laboratory test in ROC curve analysis. For values see Table 6, but direct examination of the curves indicates that these variables may be useful for further studies.

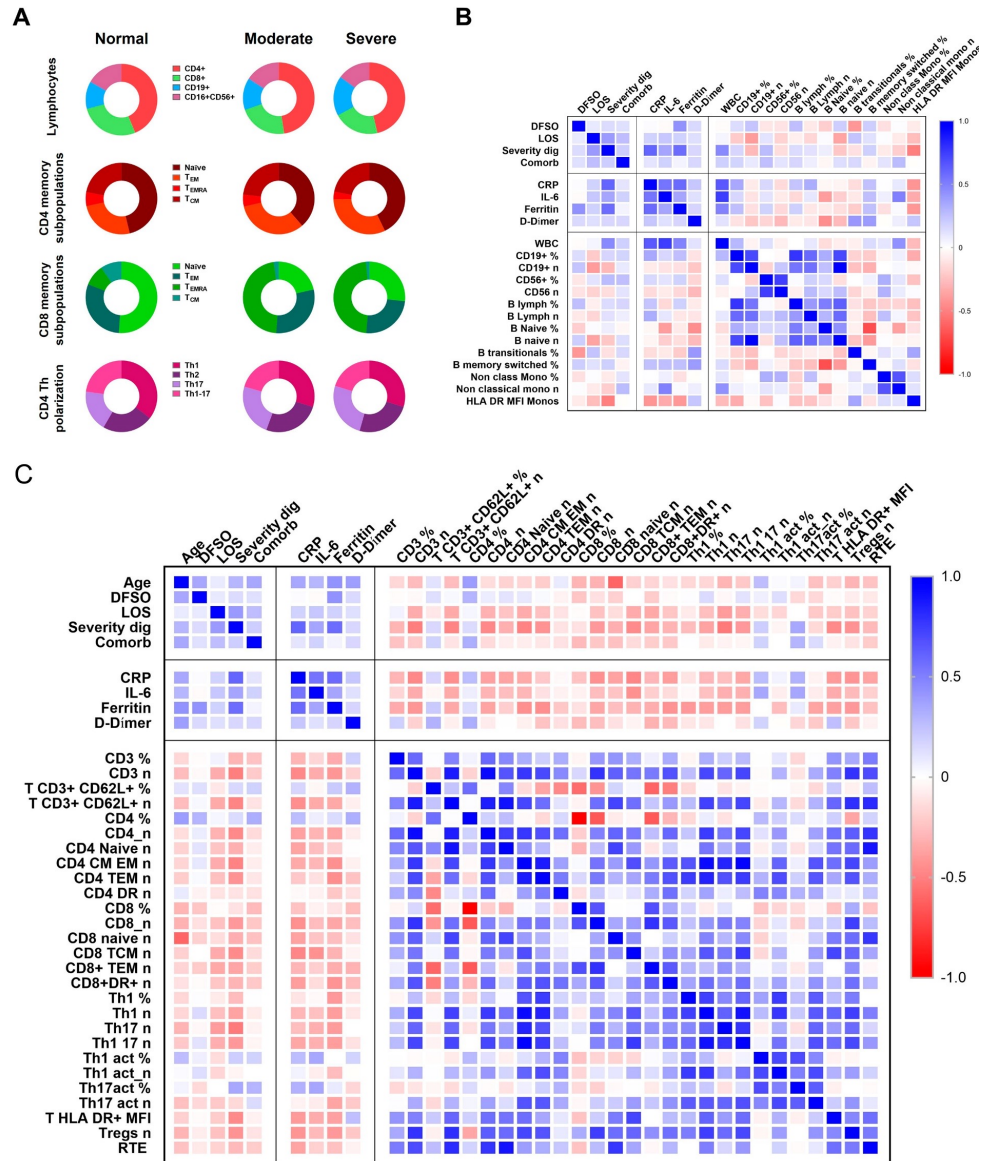


Figure 11S

Figure 11S. Summary of flowcytometry analyses of peripheral blood mononuclear cells (n=41) following HIPC protocol generated 163 variables corresponding to 42 subsets. A, distribution of the main subsets in the normal (reference), moderate and severe patients; B, Correlogram of the different subsets, showing their strong mutual interactions; C. Correlogram of lymphocytes with acute phase reactants and clinicodemographic variables. DFS0, days from disease onset; LOS, length of stay; CRP, C-Reactive Protein.