

	Susceptible	Resistant
<i>N</i>	9820	1772
<i>Age (mean (SD))</i>	69.63 (20.41)	70.64 (17.43)
<i># Hospitalizations past year (mean (SD))</i>	2.06 (1.53)	2.62 (1.97)
<i>Male (N (%))</i>	4462 (45.4)	950 (53.6)
<i>Used antibiotics (N (%))</i>	4999 (50.9)	1109 (62.6)
<i>Had MRSA (N (%))</i>	511 (5.2)	220 (12.4)
<i>Had Acinetobacter (N (%))</i>	66 (0.7)	31 (1.7)
<i>Had Pseudomonas (N (%))</i>	116 (1.2)	62 (3.5)
<i>Had CRE (N (%))</i>	34 (0.3)	16 (0.9)
<i>Had VRE (N (%))</i>	19 (0.2)	9 (0.5)
<i>Had ESBL (N (%))</i>	1551 (15.8)	697 (39.3)
<i>Had KPC (N (%))</i>	109 (1.1)	50 (2.8)
<i>Culture drawn at the internal unit (N (%))</i>	4725 (48.1)	921 (52.0)

<i>Culture drawn at the surgical unit (N (%))</i>	2374 (24.2)	386 (21.8)
<i>Culture drawn at the orthopedic unit (N (%))</i>	983 (10)	227 (12.8)
<i>Culture drawn at the obstetrics unit (N (%))</i>	188 (1.9)	22 (1.2)
<i>Culture drawn at another unit (N (%))</i>	531 (5.4)	59 (3.3)
<i>Culture drawn at ER (N (%))</i>	1019 (10.4)	157 (8.9)
<i>Had catheter (N (%))</i>	2436 (24.8)	689 (38.9)
<i>Nosocomial (N (%))</i>	3752 (38.2)	785 (44.3)
<i>Arrived from home (N (%))</i>	5997 (61.1)	942 (53.2)
<i>Arrived from an institution (N (%))</i>	1279 (13)	398 (22.5)
<i>Arrived from a medical clinic (N (%))</i>	70 (0.7)	14 (0.8)
<i>Arrived from another hospital (N (%))</i>	256 (2.6)	72 (4.1)
<i>Arrived from: unknown (N (%))</i>	1511 (15.4)	216 (12.2)
<i>Arrived from: other (N (%))</i>	707 (7.2)	130 (7.3)
<i>Diabetes (N (%))</i>	1599 (16.3)	354 (20)

<i>Immunosuppression (N (%))</i>	307 (4)	84 (4.7)
<i>Sample location: urine (N (%))</i>	4475 (45.6)	879 (49.6)
<i>Sample location: sputum (N (%))</i>	706 (7.2)	85 (4.8)
<i>Sample location: wound (N (%))</i>	2045 (20.8)	443 (25)
<i>Sample location: blood (N (%))</i>	1126 (11.5)	182 (10.3)
<i>Sample location: other (N (%))</i>	63 (0.6)	5 (0.3)
<i>Sample location: unknown (N (%))</i>	1405 (14.3)	178 (10)
<i>Genus: Escherichia (N (%))</i>	4430 (45.1)	698 (39.4)
<i>Genus: Entrobacter (N (%))</i>	443 (4.5)	31 (1.7)
<i>Genus: Citrobacter (N (%))</i>	326 (3.3)	5 (0.3)
<i>Genus: Pseudomonas (N (%))</i>	2050 (20.9)	304 (17.2)
<i>Genus: Proteus (N (%))</i>	848 (8.6)	273 (15.4)
<i>Genus: Klebsiella (N (%))</i>	1411 (14.4)	410 (23.1)
<i>Genus: Morganella (N (%))</i>	312 (3.2)	51 (2.9)

Table S1. Summary of the covariates used in this study, stratified by gentamicin resistance results. #: number of. MRSA: Methicillin-resistant *Staphylococcus aureus*. ER: emergency room. *Used antibiotics*: hospital use of antibiotics inducing gentamicin resistance during the 6 months prior to the bacterial culture's drawing.

Covariate name	Meaning
<i>Culture drawn at ER (Emergency Room)</i>	A binary covariate and a level of the categorical covariate <i>Unit</i> described below. It indicates whether the patient's culture was drawn at the ER (<i>Emergency Room</i>)
<i>Male</i>	A binary covariate indicating whether the patient is a male
<i>Used antibiotics</i>	A binary covariate indicating whether the patient used any of the following antibiotics inducing gentamicin resistance (19) in the hospital during the 6 months prior to the bacterial culture's drawing: any aminoglycosides, ciprofloxacin, ceftazidime, cefuroxime, sulfamethoxazole\trimethoprim, imipenem
<i>Had MRSA</i>	A binary covariate indicating whether the patient had a resistant strain of Methicillin-resistant <i>Staphylococcus aureus</i> (MRSA) during the year prior to the bacterial culture sampling
<i>Age, in years</i>	The patient's age at the time of the bacterial culture sampling
<i># Hospitalizations past year</i>	The number of times the patient was hospitalized during the year prior to the bacterial culture sampling
<i>Had Acinetobacter</i>	A binary covariate indicating whether the patient had an infection with a resistant strain of <i>Acinetobacter</i> in the hospital during the year prior to the bacterial culture sampling
<i>Had Pseudomonas</i>	A binary covariate indicating whether the patient had an infection with a resistant strain of <i>Pseudomonas</i> in the hospital during the year prior to the bacterial culture sampling
<i>Had CRE</i>	A binary covariate indicating whether the patient had an infection with a resistant strain of Carbapenem-resistant <i>Enterobacteriaceae</i> (CRE) in the hospital during the year prior to the bacterial culture sampling
<i>Had VRE</i>	A binary covariate indicating whether the patient had an infection with a resistant strain of Vancomycin-resistant <i>Enterococcus</i> (VRE) in the hospital during the year prior to the bacterial culture sampling
<i>Had ESBL</i>	A binary covariate indicating whether the patient had an infection with a resistant strain of Extended-spectrum beta-lactamase (ESBL) in the hospital during the year prior to the bacterial culture sampling

<i>Had KPC</i>	A binary covariate indicating whether the patient had an infection with a resistant strain of <i>Klebsiella pneumoniae</i> carbapenemase (<i>KPC</i>) in the hospital during the year prior to the bacterial culture sampling
<i>Unit</i>	A categorical covariate indicating the unit in which the patient's culture was sampled. Its reference group is the internal unit, as it was the most prevalent. The levels of this covariate are: Internal, ER (emergency room), surgical, orthopedic, obstetrics and another
<i>Had catheter</i>	A binary covariate indicating whether the patient had a catheter installation before the bacterial culture sampling
<i>Nosocomial</i>	A binary covariate indicating if the bacterial culture was drawn from the patient after more than 48 hours upon arrival at the hospital. In such cases a suspicion arises that the patient had a hospital-acquired infection
<i>Arrived from</i>	A categorical covariate indicating from where the patient arrived at the hospital. Its reference group is 'home', as it was the most prevalent. The levels of this covariate are: home, institution, medical clinic, another hospital and other
<i>Diabetes</i>	A binary covariate indicating whether the patient was diagnosed with diabetes before the bacterial culture sampling
<i>Immunosuppression</i>	A binary covariate indicating whether the patient was diagnosed with immunosuppression before the bacterial culture sampling

<p style="text-align: center;"><i>Sample location</i></p>	<p>A categorical covariate indicating the location from which the bacterial culture was sampled from the patient. Its reference group is urine, as it was the most prevalent. The levels of this covariate are: sputum, wound, blood, unknown and other</p>
<p style="text-align: center;"><i>Genus</i></p>	<p>A categorical covariate indicating the genus of bacteria. Its reference group is <i>Escherichia</i>, as it was the most prevalent. The levels of this covariate are: <i>Escherichia</i>, <i>Entrobacter</i>, <i>Citrobacter</i>, <i>Pseudomonas</i>, <i>Proteus</i>, <i>Klebsiella</i> and <i>Morganella</i></p>

Table S2. Description of the covariates used in this study. #: number of.

Standard logistic model			
<i>Covariate</i>	<i>Odds Ratios</i>	<i>Conf. Int (95%)</i>	<i>P-Value</i>
(Intercept)	0.09	0.07 – 0.12	<0.001
Age (/5)	0.98	0.97 – 1.00	0.028
Times hospitalized past year (/3)	1.24	1.11 – 1.38	<0.001
Had Acinetobacter	2.05	1.23 – 3.35	0.005
Had Pseudomonas	1.95	1.38 – 2.74	<0.001
Had CRE	1.54	0.78 – 2.90	0.194
Had VRE	0.64	0.25 – 1.54	0.335
Had ESBL	2.63	2.33 – 2.96	<0.001
Had KPC	1.80	1.23 – 2.60	0.002
Culture drawn at the surgical unit	0.95	0.82 – 1.12	0.562
Culture drawn at the orthopedic unit	1.40	1.13 – 1.74	0.002
Culture drawn at the obstetrics unit	1.13	0.61 – 2.07	0.692
Culture drawn at other unit	0.65	0.46 – 0.90	0.011
Had catheter	1.26	1.09 – 1.44	0.001
Nosocomial	1.26	1.12 – 1.43	<0.001
Arrived from an institution	1.43	1.23 – 1.66	<0.001
Arrived from a medical clinic	0.96	0.50 – 1.73	0.885
Arrived from another hospital	1.33	0.97 – 1.80	0.069
Arrived from: unknown	0.99	0.66 – 1.46	0.943
Arrived from: other	0.97	0.78 – 1.20	0.767
Diabetes	1.02	0.89 – 1.18	0.775
Immunosuppression	1.23	0.95 – 1.58	0.115
Sample location: unknown	0.64	0.53 – 0.78	<0.001
Sample location: sputum	0.45	0.34 – 0.59	<0.001
Sample location: wound	0.96	0.81 – 1.14	0.670
Sample location: blood	0.78	0.65 – 0.93	0.007

Sample location: other	0.72	0.24 – 1.69	0.493
Genus: Entrobacter	0.46	0.30 – 0.66	<0.001
Genus: Citrobacter	0.10	0.04 – 0.22	<0.001
Genus: Pseudomonas	0.81	0.69 – 0.95	0.011
Genus: Proteus	1.60	1.35 – 1.90	<0.001
Genus: Klebsiella	1.62	1.40 – 1.86	<0.001
Genus: Morganella	0.80	0.57 – 1.11	0.194
Used antibiotics	1.26	1.11 – 1.43	<0.001
Had MRSA	1.49	1.23 – 1.79	<0.001
Male	1.32	1.18 – 1.48	<0.001
Culture drawn at ER	1.41	0.91 – 2.19	0.126
Observations	11592		

Table S3. Estimates of the standard logistic model fitted to the original data. (/3): results presented per 3 unit increase in the covariate; (/5): results presented per 5 unit increase in the covariate.

<i>Covariate</i>	Culture drawn at ER model		
	<i>Odds Ratios</i>	<i>Conf. Int (95%)</i>	<i>P-Value</i>
Intercept	0.09	0.07 – 0.12	<0.001
Age (/5)	0.98	0.97 – 1.00	0.017
Times hospitalized past year (/3)	1.24	1.11 – 1.38	<0.001
Had Acinetobacter	2.07	1.25 – 3.40	0.004
Had Pseudomonas	1.96	1.39 – 2.77	<0.001
Had CRE	1.54	0.80 – 2.96	0.191
Had VRE	0.64	0.26 – 1.57	0.329
Had ESBL	2.61	2.32 – 2.95	<0.001
Had KPC	1.79	1.23 – 2.61	0.002
Culture drawn at the surgical unit	0.97	0.83 – 1.13	0.672
Culture drawn at the orthopedic unit	1.41	1.14 – 1.76	0.002
Culture drawn at the obstetrics unit	1.13	0.61 – 2.08	0.697
Culture drawn at other unit	0.65	0.46 – 0.90	0.010
Had catheter	1.26	1.10 – 1.45	0.001
Nosocomial	1.27	1.12 – 1.44	<0.001
Arrived from an institution	1.44	1.24 – 1.67	<0.001
Arrived from a medical clinic	0.95	0.51 – 1.77	0.875
Arrived from another hospital	1.33	0.98 – 1.82	0.067
Arrived from: unknown	0.99	0.66 – 1.47	0.955
Arrived from: other	0.97	0.78 – 1.20	0.767
Diabetes	1.03	0.90 – 1.19	0.656
Immunosuppression	1.23	0.95 – 1.59	0.114
Sample location: unknown	0.61	0.50 – 0.74	<0.001
Sample location: sputum	0.45	0.34 – 0.59	<0.001
Sample location: wound	0.95	0.80 – 1.12	0.539
Sample location: blood	0.77	0.64 – 0.93	0.005
Sample location: other	0.71	0.27 – 1.85	0.487
Genus: Entrobacter	0.46	0.31 – 0.67	<0.001
Genus: Citrobacter	0.10	0.04 – 0.25	<0.001
Genus: Pseudomonas	0.80	0.68 – 0.95	0.009

Genus: Proteus	1.60	1.34 – 1.90	<0.001
Genus: Klebsiella	1.61	1.39 – 1.86	<0.001
Genus: Morganella	0.81	0.58 – 1.13	0.207
Used antibiotics	1.26	1.11 – 1.44	<0.001
Had MRSA	1.49	1.23 – 1.80	<0.001
Male	1.32	1.18 – 1.47	<0.001
S(Culture drawn at ER)			0.001
<hr/>			
Observations	11592		

Table S4. Estimates of *Culture drawn at ER* model fitted to the original data. S(Culture drawn at ER): The time-varying coefficient of *Culture drawn at ER*, testing if this coefficient equals zero for all t ; (/3): results presented per 3 unit increase in the covariate; (/5): results presented per 5 unit increase in the covariate.

<i>Covariate</i>	Male model		
	<i>Odds Ratios</i>	<i>Conf. Int (95%)</i>	<i>P-Value</i>
Intercept	0.09	0.07 – 0.12	<0.001
Age (/5)	0.98	0.97 – 1.00	0.037
Times hospitalized past year (/3)	1.24	1.11 – 1.39	<0.001
Had Acinetobacter	2.06	1.25 – 3.40	0.005
Had Pseudomonas	1.97	1.40 – 2.79	<0.001
Had CRE	1.59	0.82 – 3.08	0.166
Had VRE	0.57	0.23 – 1.43	0.233
Had ESBL	2.62	2.32 – 2.96	<0.001
Had KPC	1.81	1.24 – 2.64	0.002
Culture drawn at the surgical unit	0.94	0.80 – 1.10	0.466
Culture drawn at the orthopedic unit	1.38	1.11 – 1.72	0.004
Culture drawn at the obstetrics unit	1.11	0.60 – 2.05	0.731
Culture drawn at other unit	0.65	0.46 – 0.91	0.012
Had catheter	1.24	1.08 – 1.42	0.003
Nosocomial	1.27	1.12 – 1.44	<0.001
Arrived from an institution	1.43	1.24 – 1.67	<0.001
Arrived from a medical clinic	0.98	0.53 – 1.83	0.952
Arrived from another hospital	1.36	1.00 – 1.86	0.051
Arrived from: unknown	1.00	0.67 – 1.49	0.987
Arrived from: other	0.95	0.77 – 1.18	0.648
Diabetes	1.00	0.86 – 1.16	0.984
Immunosuppression	1.22	0.94 – 1.58	0.127
Sample location: unknown	0.64	0.53 – 0.78	<0.001
Sample location: sputum	0.46	0.35 – 0.60	<0.001
Sample location: wound	0.96	0.81 – 1.14	0.673
Sample location: blood	0.78	0.65 – 0.94	0.008
Sample location: other	0.70	0.27 – 1.81	0.460
Genus: Entrobacter	0.46	0.31 – 0.67	<0.001
Genus: Citrobacter	0.10	0.04 – 0.24	<0.001
Genus: Pseudomonas	0.81	0.69 – 0.96	0.013

Genus: Proteus	1.61	1.35 – 1.91	<0.001
Genus: Klebsiella	1.61	1.39 – 1.86	<0.001
Genus: Morganella	0.79	0.57 – 1.11	0.174
Used antibiotics	1.25	1.10 – 1.42	<0.001
Had MRSA	1.51	1.25 – 1.82	<0.001
Culture drawn at ER	1.38	0.89 – 2.13	0.151
S(Male)			<0.001
<hr/>			
Observations	11592		

Table S5. Estimates of *Male* model fitted to the original data. S(Male): The time-varying coefficient of *Male*, testing if this coefficient equals zero for all t ; (/3): results presented per 3 unit increase in the covariate; (/5): results presented per 5 unit increase in the covariate.

<i>Covariate</i>	Used antibiotics model		
	<i>Odds Ratios</i>	<i>Conf. Int (95%)</i>	<i>P-Value</i>
Intercept	0.09	0.07 – 0.12	<0.001
Age (/5)	0.98	0.97 – 1.00	0.026
Times hospitalized past year (/3)	1.25	1.12 – 1.39	<0.001
Had Acinetobacter	2.02	1.22 – 3.33	0.006
Had Pseudomonas	1.94	1.37 – 2.73	<0.001
Had CRE	1.51	0.79 – 2.90	0.214
Had VRE	0.64	0.26 – 1.57	0.325
Had ESBL	2.61	2.32 – 2.95	<0.001
Had KPC	1.81	1.24 – 2.63	0.002
Culture drawn at the surgical unit	0.96	0.82 – 1.12	0.612
Culture drawn at the orthopedic unit	1.40	1.13 – 1.74	0.002
Culture drawn at the obstetrics unit	1.14	0.62 – 2.10	0.681
Culture drawn at other unit	0.65	0.47 – 0.91	0.012
Had catheter	1.26	1.10 – 1.45	0.001
Nosocomial	1.26	1.11 – 1.43	<0.001
Arrived from an institution	1.44	1.24 – 1.67	<0.001
Arrived from a medical clinic	0.95	0.51 – 1.78	0.882
Arrived from another hospital	1.34	0.98 – 1.82	0.065
Arrived from: unknown	0.98	0.66 – 1.47	0.928
Arrived from: other	0.98	0.79 – 1.21	0.849
Diabetes	1.02	0.88 – 1.18	0.767
Immunosuppression	1.23	0.95 – 1.59	0.119
Sample location: unknown	0.64	0.53 – 0.78	<0.001
Sample location: sputum	0.45	0.35 – 0.59	<0.001
Sample location: wound	0.97	0.82 – 1.14	0.692
Sample location: blood	0.77	0.65 – 0.93	0.006
Sample location: other	0.72	0.28 – 1.86	0.496
Genus: Entrobacter	0.46	0.31 – 0.67	<0.001
Genus: Citrobacter	0.10	0.04 – 0.25	<0.001
Genus: Pseudomonas	0.81	0.69 – 0.95	0.012

Genus: Proteus	1.61	1.35 – 1.91	<0.001
Genus: Klebsiella	1.61	1.40 – 1.87	<0.001
Genus: Morganella	0.80	0.58 – 1.12	0.191
Had MRSA	1.49	1.23 – 1.80	<0.001
Culture drawn at ER	1.41	0.91 – 2.19	0.122
Male	1.32	1.18 – 1.48	<0.001
S(Used antibiotics)			0.004
<hr/>			
Observations	11592		

Table S6. Estimates of *Used antibiotics* model fitted to the original data. S(Used antibiotics): The time-varying coefficient of *Used antibiotics*, testing if this coefficient equals zero for all t ; (/3): results presented per 3 unit increase in the covariate; (/5): results presented per 5 unit increase in the covariate.

<i>Covariate</i>	Had MRSA model		
	<i>Odds Ratios</i>	<i>Conf. Int (95%)</i>	<i>P-Value</i>
Intercept	0.09	0.07 – 0.12	<0.001
Age (/5)	0.98	0.97 – 1.00	0.027
Times hospitalized past year (/3)	1.24	1.11 – 1.38	<0.001
Had Acinetobacter	2.05	1.24 – 3.39	0.005
Had Pseudomonas	1.96	1.39 – 2.77	<0.001
Had CRE	1.56	0.82 – 3.00	0.177
Had VRE	0.62	0.25 – 1.56	0.312
Had ESBL	2.62	2.32 – 2.95	<0.001
Had KPC	1.79	1.23 – 2.61	0.002
Culture drawn at the surgical unit	0.96	0.82 – 1.12	0.602
Culture drawn at the orthopedic unit	1.42	1.14 – 1.77	0.002
Culture drawn at the obstetrics unit	1.14	0.62 – 2.09	0.682
Culture drawn at other unit	0.65	0.47 – 0.91	0.012
Had catheter	1.25	1.09 – 1.44	0.001
Nosocomial	1.26	1.11 – 1.43	<0.001
Arrived from an institution	1.43	1.23 – 1.66	<0.001
Arrived from a medical clinic	0.96	0.52 – 1.79	0.910
Arrived from another hospital	1.33	0.98 – 1.81	0.070
Arrived from: unknown	0.98	0.66 – 1.47	0.939
Arrived from: other	0.97	0.78 – 1.20	0.787
Diabetes	1.03	0.89 – 1.19	0.696
Immunosuppression	1.23	0.95 – 1.59	0.112
Sample location: unknown	0.64	0.53 – 0.78	<0.001
Sample location: sputum	0.45	0.35 – 0.59	<0.001
Sample location: wound	0.96	0.81 – 1.14	0.633
Sample location: blood	0.78	0.65 – 0.93	0.006
Sample location: other	0.72	0.28 – 1.86	0.493
Genus: Entrobacter	0.45	0.31 – 0.67	<0.001
Genus: Citrobacter	0.10	0.04 – 0.24	<0.001
Genus: Pseudomonas	0.81	0.69 – 0.95	0.010

Genus: Proteus	1.61	1.35 – 1.91	<0.001
Genus: Klebsiella	1.62	1.40 – 1.87	<0.001
Genus: Morganella	0.81	0.58 – 1.13	0.208
Used antibiotics	1.26	1.11 – 1.43	<0.001
Culture drawn at ER	1.41	0.91 – 2.19	0.120
Male	1.32	1.18 – 1.48	<0.001
S(Had MRSA)			<0.001
<hr/>			
Observations	11592		

Table S7. Estimates of *Had MRSA* model fitted to the original data. *S(Had MRSA)*: The time-varying coefficient of *Had MRSA*, testing if this coefficient equals zero for all *t*; (*/3*): results presented per 3 unit increase in the covariate; (*/5*): results presented per 5 unit increase in the covariate.

<i>Covariate</i>	Culture drawn at ER model		
	<i>Odds Ratios</i>	<i>Conf. Int (95%)</i>	<i>P-Value</i>
Intercept	0.05	0.03 – 0.07	<0.001
Age (/5)	0.99	0.97 – 1.01	0.433
Times hospitalized past year (/3)	1.24	1.06 – 1.45	0.006
Had Acinetobacter	2.47	1.10 – 5.57	0.029
Had Pseudomonas	1.71	0.94 – 3.13	0.079
Had CRE	0.65	0.18 – 2.28	0.497
Had VRE	0.33	0.07 – 1.64	0.176
Had ESBL	3.40	2.83 – 4.08	<0.001
Had KPC	1.64	0.86 – 3.12	0.130
Culture drawn at the surgical unit	1.05	0.84 – 1.31	0.658
Culture drawn at the orthopedic unit	1.41	1.03 – 1.93	0.031
Culture drawn at the obstetrics unit	1.10	0.49 – 2.48	0.820
Culture drawn at other unit	0.58	0.37 – 0.91	0.018
Had catheter	1.28	1.06 – 1.56	0.011
Nosocomial	1.24	1.05 – 1.46	0.009
Arrived from an institution	1.54	1.24 – 1.92	<0.001
Arrived from a medical clinic	0.97	0.42 – 2.23	0.937
Arrived from another hospital	1.68	1.06 – 2.67	0.029
Arrived from: unknown	1.39	0.82 – 2.36	0.216
Arrived from: other	0.99	0.72 – 1.36	0.956
Diabetes	1.00	0.81 – 1.23	0.976
Immunosuppression	0.99	0.67 – 1.47	0.963
Sample location: unknown	0.59	0.46 – 0.76	<0.001
Sample location: sputum	0.41	0.29 – 0.57	<0.001
Sample location: wound	0.90	0.72 – 1.13	0.378
Sample location: blood	0.82	0.65 – 1.03	0.082
Sample location: other	0.82	0.27 – 2.52	0.733
Genus: Entrobacter	0.47	0.30 – 0.74	0.001
Genus: Citrobacter	0.08	0.03 – 0.22	<0.001
Genus: Pseudomonas	0.80	0.65 – 0.98	0.030

Genus: Proteus	1.48	1.19 – 1.85	0.001
Genus: Klebsiella	1.76	1.46 – 2.13	<0.001
Genus: Morganella	0.74	0.50 – 1.11	0.149
Used antibiotics	1.33	1.12 – 1.57	0.001
Had MRSA	1.52	1.13 – 2.07	0.007
Male	1.40	1.19 – 1.65	<0.001
S(Culture drawn at ER)			0.026
Random intercept			<0.001
<hr/>			
Observations	11592		

Table S8. Estimates of *Culture drawn at ER* model with a random intercept fitted to the original data. S(Culture drawn at ER): The time-varying coefficient of *Culture drawn at ER*, testing if this coefficient equals zero for all t ; (/3): results presented per 3 unit increase in the covariate; (/5): results presented per 5 unit increase in the covariate. The variance of the random intercept is 2.89 (95% confidence interval: 1.60, 1.90).

<i>Covariate</i>	Male model		
	<i>Odds Ratios</i>	<i>Conf. Int (95%)</i>	<i>P-Value</i>
Intercept	0.05	0.03 – 0.07	<0.001
Age (/5)	0.99	0.97 – 1.02	0.549
Times hospitalized past year (/3)	1.23	1.05 – 1.44	0.009
Had Acinetobacter	2.48	1.10 – 5.59	0.029
Had Pseudomonas	1.72	0.94 – 3.14	0.077
Had CRE	0.68	0.19 – 2.39	0.546
Had VRE	0.32	0.07 – 1.59	0.165
Had ESBL	3.46	2.87 – 4.15	<0.001
Had KPC	1.60	0.84 – 3.05	0.149
Culture drawn at the surgical unit	1.02	0.82 – 1.28	0.832
Culture drawn at the orthopedic unit	1.37	1.00 – 1.88	0.047
Culture drawn at the obstetrics unit	1.08	0.48 – 2.44	0.857
Culture drawn at other unit	0.57	0.37 – 0.90	0.015
Had catheter	1.26	1.04 – 1.53	0.018
Nosocomial	1.24	1.05 – 1.45	0.010
Arrived from an institution	1.55	1.24 – 1.93	<0.001
Arrived from a medical clinic	0.96	0.42 – 2.22	0.932
Arrived from another hospital	1.70	1.07 – 2.70	0.026
Arrived from: unknown	1.41	0.83 – 2.40	0.202
Arrived from: other	0.98	0.72 – 1.35	0.916
Diabetes	0.96	0.78 – 1.20	0.739
Immunosuppression	0.97	0.65 – 1.45	0.892
Sample location: unknown	0.63	0.49 – 0.80	<0.001
Sample location: sputum	0.41	0.30 – 0.58	<0.001
Sample location: wound	0.93	0.74 – 1.16	0.496
Sample location: blood	0.83	0.66 – 1.04	0.106
Sample location: other	0.81	0.26 – 2.48	0.712
Genus: Entrobacter	0.47	0.30 – 0.73	0.001
Genus: Citrobacter	0.08	0.03 – 0.22	<0.001
Genus: Pseudomonas	0.80	0.65 – 0.98	0.032

Genus: Proteus	1.48	1.19 – 1.85	0.001
Genus: Klebsiella	1.77	1.47 – 2.14	<0.001
Genus: Morganella	0.74	0.49 – 1.10	0.134
Used antibiotics	1.32	1.12 – 1.57	0.001
Had MRSA	1.54	1.13 – 2.08	0.006
Culture drawn at ER	1.17	0.66 – 2.06	0.598
S(Male)			<0.001
Random intercept			<0.001
<hr/>			
Observations	11592		

Table S9. Estimates of *Male* model with a random intercept fitted to the original data. S(Male): The time-varying coefficient of *Male*, testing if this coefficient equals zero for all t ; (/3): results presented per 3 unit increase in the covariate; (/5): results presented per 5 unit increase in the covariate. The variance of the random intercept is 2.89 (95% confidence interval: 1.60, 1.90).

<i>Covariate</i>	Used antibiotics model		
	<i>Odds Ratios</i>	<i>Conf. Int (95%)</i>	<i>P-Value</i>
Intercept	0.05	0.03 – 0.07	<0.001
Age (/5)	0.99	0.97 – 1.02	0.525
Times hospitalized past year (/3)	1.24	1.06 – 1.45	0.006
Had Acinetobacter	2.45	1.09 – 5.52	0.031
Had Pseudomonas	1.70	0.93 – 3.11	0.083
Had CRE	0.64	0.18 – 2.26	0.487
Had VRE	0.34	0.07 – 1.66	0.180
Had ESBL	3.41	2.84 – 4.10	<0.001
Had KPC	1.64	0.86 – 3.11	0.132
Culture drawn at the surgical unit	1.04	0.84 – 1.30	0.708
Culture drawn at the orthopedic unit	1.40	1.02 – 1.91	0.036
Culture drawn at the obstetrics unit	1.11	0.49 – 2.52	0.798
Culture drawn at other unit	0.59	0.38 – 0.92	0.021
Had catheter	1.28	1.05 – 1.55	0.013
Nosocomial	1.23	1.05 – 1.45	0.011
Arrived from an institution	1.54	1.24 – 1.92	<0.001
Arrived from a medical clinic	0.97	0.42 – 2.24	0.949
Arrived from another hospital	1.68	1.06 – 2.67	0.029
Arrived from: unknown	1.38	0.82 – 2.35	0.229
Arrived from: other	0.99	0.73 – 1.36	0.975
Diabetes	0.99	0.80 – 1.23	0.937
Immunosuppression	0.98	0.66 – 1.46	0.933
Sample location: unknown	0.62	0.49 – 0.80	<0.001
Sample location: sputum	0.41	0.29 – 0.58	<0.001
Sample location: wound	0.92	0.74 – 1.15	0.467
Sample location: blood	0.83	0.66 – 1.03	0.094
Sample location: other	0.82	0.27 – 2.53	0.736
Genus: Entrobacter	0.47	0.30 – 0.73	0.001
Genus: Citrobacter	0.08	0.03 – 0.22	<0.001
Genus: Pseudomonas	0.80	0.65 – 0.98	0.034

Genus: Proteus	1.48	1.19 – 1.85	<0.001
Genus: Klebsiella	1.77	1.47 – 2.13	<0.001
Genus: Morganella	0.74	0.50 – 1.11	0.146
Had MRSA	1.52	1.12 – 2.06	0.007
Culture drawn at ER	1.20	0.68 – 2.12	0.539
Male	1.41	1.19 – 1.66	<0.001
S(Used antibiotics)			0.006
Random intercept			<0.001
<hr/>			
Observations	11592		

Table S10. Estimates of *Used antibiotics* model with a random intercept fitted to the original data. S(Used antibiotics): The time-varying coefficient of *Used antibiotics*, testing if this coefficient equals zero for all t ; (/3): results presented per 3 unit increase in the covariate; (/5): results presented per 5 unit increase in the covariate. The variance of the random intercept is 2.89 (95% confidence interval: 1.60, 1.90).

<i>Covariate</i>	Had MRSA model		
	<i>Odds Ratios</i>	<i>Conf. Int (95%)</i>	<i>P-Value</i>
Intercept	0.05	0.03 – 0.07	<0.001
Age (/5)	0.99	0.97 – 1.02	0.533
Times hospitalized past year (/3)	1.24	1.06 – 1.44	0.007
Had Acinetobacter	2.47	1.09 – 5.58	0.030
Had Pseudomonas	1.73	0.95 – 3.16	0.075
Had CRE	0.65	0.18 – 2.32	0.512
Had VRE	0.30	0.06 – 1.55	0.150
Had ESBL	3.41	2.83 – 4.09	<0.001
Had KPC	1.64	0.86 – 3.12	0.133
Culture drawn at the surgical unit	1.04	0.84 – 1.30	0.707
Culture drawn at the orthopedic unit	1.43	1.04 – 1.95	0.027
Culture drawn at the obstetrics unit	1.12	0.49 – 2.53	0.789
Culture drawn at other unit	0.59	0.38 – 0.93	0.022
Had catheter	1.27	1.05 – 1.54	0.014
Nosocomial	1.23	1.04 – 1.44	0.013
Arrived from an institution	1.55	1.24 – 1.92	<0.001
Arrived from a medical clinic	0.99	0.43 – 2.27	0.978
Arrived from another hospital	1.68	1.05 – 2.67	0.029
Arrived from: unknown	1.38	0.81 – 2.34	0.232
Arrived from: other	1.00	0.73 – 1.37	0.982
Diabetes	1.00	0.81 – 1.24	0.990
Immunosuppression	0.98	0.66 – 1.46	0.932
Sample location: unknown	0.62	0.49 – 0.79	<0.001
Sample location: sputum	0.41	0.30 – 0.58	<0.001
Sample location: wound	0.92	0.73 – 1.15	0.457
Sample location: blood	0.83	0.66 – 1.03	0.093
Sample location: other	0.82	0.27 – 2.53	0.736
Genus: Entrobacter	0.47	0.30 – 0.73	0.001
Genus: Citrobacter	0.08	0.03 – 0.22	<0.001
Genus: Pseudomonas	0.80	0.65 – 0.98	0.032

Genus: Proteus	1.49	1.19 – 1.85	<0.001
Genus: Klebsiella	1.78	1.47 – 2.14	<0.001
Genus: Morganella	0.75	0.50 – 1.12	0.161
Used antibiotics	1.33	1.12 – 1.57	0.001
Culture drawn at ER	1.20	0.68 – 2.13	0.526
Male	1.40	1.19 – 1.66	<0.001
S(Had MRSA)			0.026
Random intercept			<0.001
<hr/>			
Observations	11592		

Table S11. Estimates of *Had MRSA* model with a random intercept fitted to the original data.

S(Had MRSA): The time-varying coefficient of *Had MRSA*, testing if this coefficient equals zero for all t ; (*/3*): results presented per 3 unit increase in the covariate; (*/5*): results presented per 5 unit increase in the covariate. The variance of the random intercept is 2.89 (95% confidence interval: 1.60, 1.90).

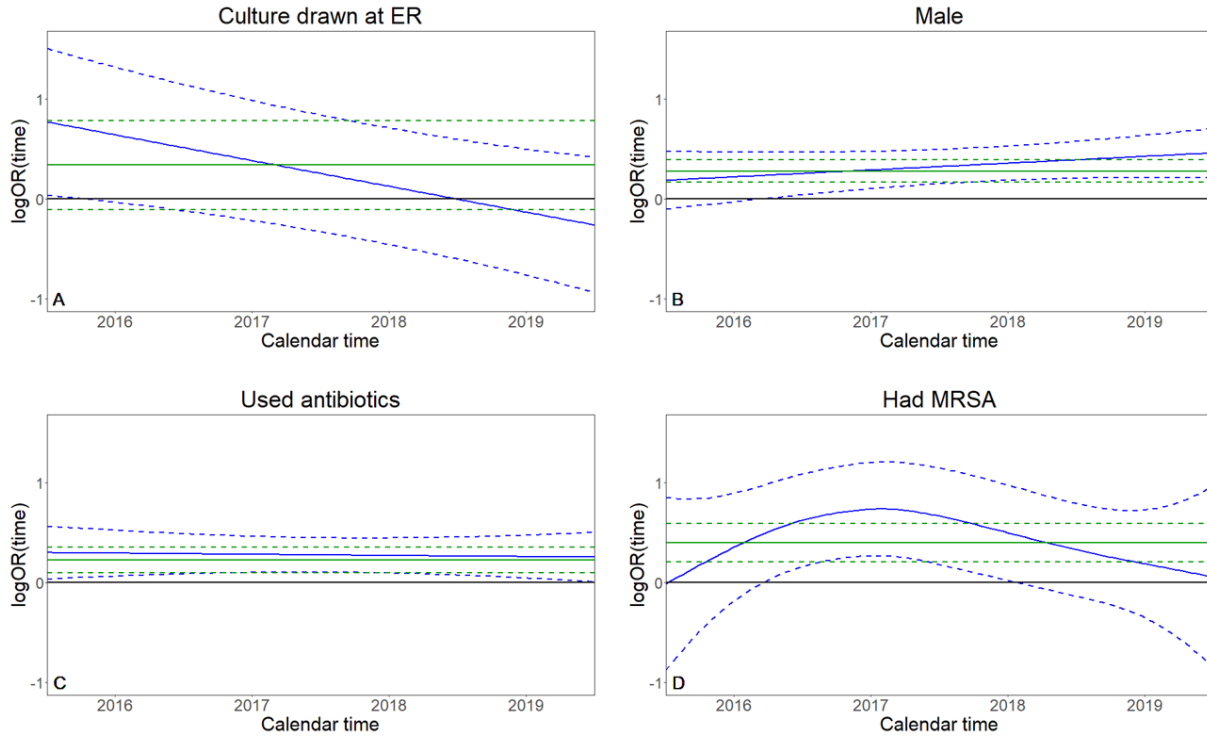


Figure S1. Estimates of the time-fixed (green) and time-varying (blue) coefficients from the four time-varying coefficient models with random intercepts and the single time-fixed model. Correspondingly, 95% Bayesian credible intervals and standard 95% confidence intervals are given in dashed lines. The horizontal axis represents the time in days between 2016 and 2019.

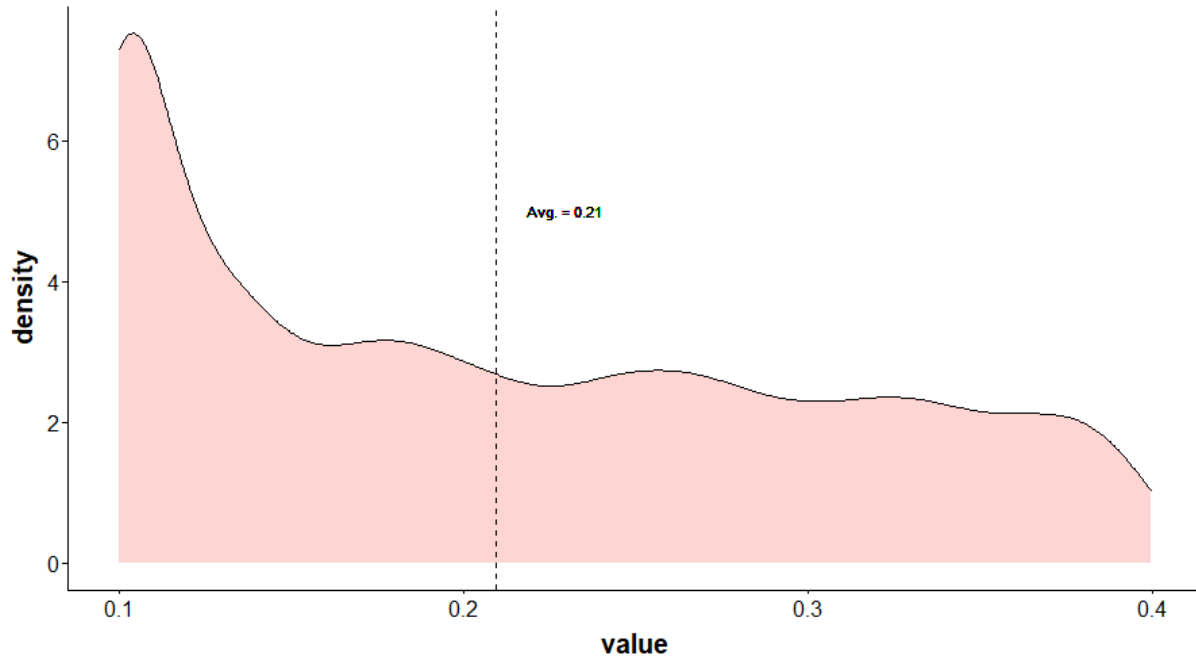


Figure S2. Density of $p_t(\text{Community use} = 1)$ in our data, first simulation study. The values of t are the withdrawal times of bacterial cultures from the patients.

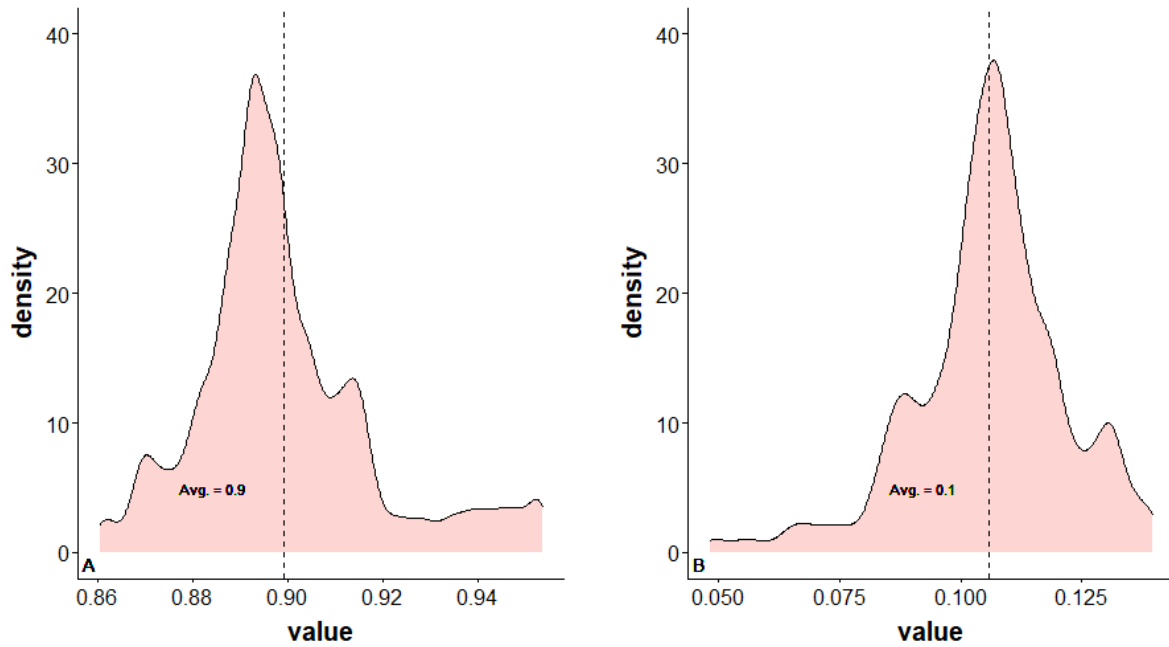


Figure S3. Density of $p_t(\text{Arrived at ER} = k)$ in our data, where $k \in \{0,1\}$, first simulation study. Panel (A): The estimated density of $p_t(\text{Arrived at ER} = 0)$. Panel (B): The estimated density of $p_t(\text{Arrived at ER} = 1)$. The values of t are the withdrawal times of bacterial cultures from the patients. The probability $p_t(\text{Arrived at ER} = k)$ was estimated from the Meir hospital data using a GAM.

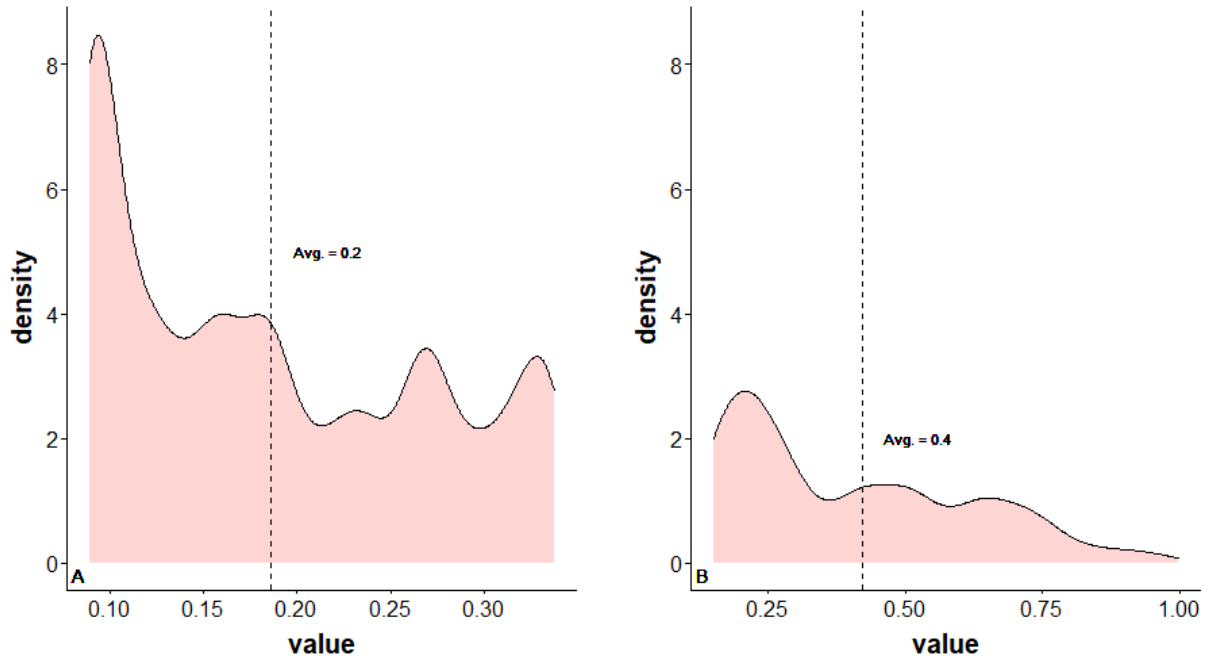


Figure S4. Density of $p_t(\text{Community use} = 1 | \text{Arrived at ER} = k)$ in our data, where $k \in \{0,1\}$ from Equation (3), first simulation study. Panel (A): The estimated density of $p_t(\text{Community use} = 1 | \text{Arrived at ER} = 0)$. Panel (B): The estimated density of $p_t(\text{Community use} = 1 | \text{Arrived at ER} = 1)$. The values of t are the withdrawal times of bacterial cultures from the patients. In the 15 rare instances when the sampled $p_t(\text{Community use} = 1 | \text{Arrived at ER} = k) > 1$, they were replaced by a uniform sample from $[0.85, 1]$.