

Supplementary Materials

Genetic evidence for causal relationships between age at natural menopause and the risk of aging-associated adverse health outcomes

Joanna Lankester, PhD^{1,2}, Jin Li, PhD^{1,3}, Elias Levy Itshak Salfati, PhD⁴, Marcia L. Stefanick Ph.D^{1,5}, Kei Hang Katie Chan, MPH, PhD^{6,7,8}, Simin Liu, MD, ScD^{8,9}, Carolyn J. Crandall, MD, MS¹⁰, Shoa L. Clarke, MD, PhD*^{1,2}, Themistocles L. Assimes, MD, PhD*^{1,2}

¹Department of Medicine, Stanford University School of Medicine

²VA Palo Alto Health Care System, Palo Alto, CA

³ThermoFisher Scientific

⁴The Scripps Research Institute

⁵Department of Obstetrics and Gynecology, Stanford University School of Medicine

⁶Departments of Biomedical Sciences and Electrical Engineering in the City University of Hong Kong

⁷Center for Global Cardiometabolic Health, Brown University

⁸Department of Epidemiology, School of Public Health, Brown University

⁹Department of Medicine, Alpert School of Medicine, Brown University

¹⁰Department of Medicine, David Geffen School of Medicine at University of California, Los Angeles

Supplemental Methods

Item 1.

Table. External datasets acquired from NIH database of Genotypes and Phenotypes (dbGaP) and from the European Genome-Phenome Archive (EGA) for two-sample mendelian randomization after restricting datasets to post-menopausal women

Abbreviation in figure	Full name	Access number	Phenotype	Reference (PMID)
ARIC	The Atherosclerosis Risk in Communities (ARIC) Study	phs000280	coronary heart disease, stroke	2646917
CHS	Cardiovascular Health Study	phs000287	coronary heart disease, stroke	1669507
E2C2	Epidemiology of Endometrial Cancer Consortium	phs000893	endometrial	19132539, 24096698
EAGLE+ATBC+PLCO+C SP-II GWAS	A Genome-Wide Association Study of Lung Cancer Risk	phs000336	lung cancer	19836008
FHS	Framingham Heart Study	phs000007	coronary heart disease, stroke	14819398, 1208363, 17372189
High density SNP analysis	High Density SNP Association Analysis of Lung Cancer	phs000753	lung cancer	18385676
Kaiser	Kaiser Permanente Research Program on Genes, Environment, and Health (RPGEH)	phs000788 (phs000674)	osteoporosis	21565264, 21903159, 26092718, 26092716
MESA	Multi-Ethnic Study of Atherosclerosis	phs000209	coronary heart disease, stroke	12397006
NCI GWAS	National Cancer Institute (NCI) Genome Wide Association Study (GWAS) of Lung Cancer in Never	phs000634	lung cancer	31009812
NHS	Nurses Health Study 2	phs000147	breast cancer	17529973, 22037553
WTCCC2	Wellcome Trust Case Control Consortium 2	EGAD00010000264	stroke	24436234

Item 2.

Definition of ANM

Women’s Health Initiative (WHI): Age of natural menopause was derived by WHI from questions related to menopause status and provided via the MENO variable which we used as the ANM in our analyses. Questions related to menopause status included “How old were you when you last had any menstrual bleeding?”, “When was the last time you had any menstrual bleeding or spotting?”, “How old were you when you first had symptoms such as hot flashes or night sweats?”, “Did you ever have a hysterectomy?”, “How old were you when you had your hysterectomy”, “Did you ever have an operation to have one or both of your ovaries taken out?”, and “How old were you when you had your last operation to remove an ovary?” For women with history of bilateral oophorectomy before menopausal symptoms began, their ANM is not available. For women with history of hysterectomy in the absence of bilateral oophorectomy before menopausal symptoms began, their

ANM was estimated from the age of their menopausal symptoms instead of last menstrual bleeding. For the remaining women, their ANM was derived from the age of last menstrual bleeding and defined as the age of the participant after 1 year of amenorrhea.

UK Biobank (UKB): Women who indicated they had undergone menopause were asked: “How old were you when your periods stopped?” Their response was recorded in field 3581 labeled “age at menopause”. Given the ambiguity of the question (i.e., they were not asked for age at last menstrual period), we took this field at face value. This field was collected from women of a variety of ages in the UK Biobank and therefore could have been many years post-menopause. To mitigate against recall error, we used a two-year buffer for definition of both surgical causes of period cessation and clinical outcome cases. Thus, women who had undergone bilateral oophorectomy (field 3882) at or before the age of field 3581 + 2 years were excluded. UKB did not collect data on other menopausal symptoms, so women who had a hysterectomy prior to menopause did not have an available age of menopause. Those with an age of hysterectomy (field 2824) at or before the age of field 3581 + 2 years were also excluded.

Item 3.

Phenotypic definitions; unique identifiers for each variable used from Women's Health Initiative and UK Biobank. Retrieval from (<https://sp.whi.org/researchers/data/SitePages/SAS%20Variables.aspx>) and (<https://biobank.ctsu.ox.ac.uk/crystal/search.cgi>).

Item 3a.

Table. Definition of covariates in Women's Health Initiative data. (Documented variable order may differ from question number in form, given that some questions have subsections.)

Covariate	Variable ID	Units	Form	Variable Order	Description
age at menopause	MENO	years	31	63	Age at which participant went through menopause. Computed using Form 31, questions 5, 6.1, 10, 10.1; Form 2, questions 7, 18, 18.2; Form 43 (age first used HRT).
age at enrollment	AGE	years	2	6	Derived from date of birth and date of enrollment
body mass index	BMI	kg/m ²	80	20	Derived from measured height and weight at enrollment
systolic blood pressure	SYST	mmHg	80	7	Measured at baseline (question 6.1 and 6.2), averaged from two readings
education	EDUC	numeric category	20	3	ordinal variable with 11 categories (question 6)
family income	INCOME	numeric category	20	25	ordinal variable with 9 categories (question 11)
alcohol	F60ALCWK	number of servings per week	60	32	self-reported from food frequency questionnaire
physical activity	TEXPWK	MET-hours/week	143	210	Computed from form 143, questions 6, 6.1, 6.2, 7.1-7.6
dietary vitamin D	F60VITD	mcg/day	60	56	self-reported from food frequency questionnaire
number of pregnancies	PARITY	number of pregnancies	31	55	Number of pregnancies lasting at least 6 months, computed from form 31, questions 7, 7.6, 7.7
WHO fracture risk	WHOFRACT	risk score	n/a	Risk scores 2	Derived using the FRAX tool
current smoking	SMOKING	True/False	34	48	Computed from Form 34, questions 1, 1.2, and 1.5. Selected current smoking (True/False).
participated in menopausal hormone therapy (MHT) trial	HRTFLAG	True/False	Demographics and Study Membership (CT+OS)	4	n/a
hormone use ever	TOTH	True/False	43	32	HRT use ever, collected at baseline
participated in calcium and vitamin D trial	CADFLAG	True/False	Demographics and Study Membership (CT+OS)	4	n/a
bilateral oophorectomy	BOOPH	True/False	31	60	Computed from for 31, question 10.
hysterectomy	HYST	True/False	2	22	From form 2, question 18.
hypertension history	HTNTRT	True/False	30	109	Computed from Form 30, questions 7, 7.2, and 7.3. Three category variable on history of hypertension including information on current treatment. The three groups are never, currently untreated and currently treated hypertensive.
diabetes history	DIABTRT	True/False	2	69	Computed from Form 2, question 23, 23.4 and 23.6. Indicator for whether the participant has ever been treated for diabetes with pills or shots.
broken bone history	BKBONE	True/False	30	92	Self-reported at baseline from question 15
osteoporosis history	OSTEOPOR	True/False	30	16	Self-reported at baseline from question 2
stroke or TIA history	STROKE, TIA	True/False	2	43, 45	Self-reported as having been diagnosed by a doctor from questions 26, 27.

Item 3b.

Table. Definition of clinical outcomes in Women's Health Initiative data.				
Outcome	Variable ID	Form	Variable Order	Description
Breast cancer	BREAST	CT & OS Adjudicated Outcomes	97	Defined as the first occurrence of Invasive or In Situ Breast Cancer. All Deaths due to breast cancer are considered Invasive Breast Cancers. Breast Cancer is adjudicated for CT and OS participants.
Endometrial cancer	ENDMTRL	CT & OS Adjudicated Outcomes	124	Defined as the first occurrence of Endometrial Cancer or a Death due to Endometrial Cancer. Endometrial Cancer is adjudicated for CT and OS participants.
Ovarian cancer	OVARY	CT & OS Adjudicated Outcomes	205	Defined as the first occurrence of Ovarian Cancer or a Death due to Ovarian Cancer. Ovarian Cancer is adjudicated for CT and OS participants.
Lung cancer	LUNG	CT & OS Adjudicated Outcomes	160	Defined as the first occurrence of Lung Cancer or a Death due to Lung Cancer. Lung Cancer is adjudicated for CT and OS participants.
Coronary heart disease	CHD	CT & OS Adjudicated Outcomes	16	Defined as the first occurrence of Clinical MI, Definite Silent MI or a Death due to Definite CHD or Possible CHD. Clinical MI and Death were adjudicated for CT and OS ppts through Ext1. In Ext2 they are only adjudicated for the Medical Record Cohort.
Ischemic stroke	STRKISCH	CT & OS Adjudicated Outcomes	40	Defined as a Stroke where the diagnosis question indicates an ischemic stroke. Ischemic Stroke was adjudicated for CT and OS participants through Ext1. In Ext2 it is only adjudicated for the Medical Record Cohort.
Fracture	ANYFX	CT & OS Adjudicated Outcomes	280	Defined as the first fracture of Hip, upper leg, pelvis, knee, lower leg, ankle, foot(not toe), tailbone, spine or back, lower arm or wrist, hand (not finger), elbow, upper arm or shoulder and other.
Osteoporosis	F33OSTEOP	Self Reported Outcomes for CT/OS through WHI Extension Study 1	43	Not collected after WHI study closeout.
Alzheimer disease	F33ALZHEIMERS	Self Reported Outcomes for CT/OS through WHI Extension Study 1	71	Combined from all three instances (CT/OS extension 1, CaD extension 1, and extension 1)

Item 3c.

Table. Definition of covariates in the UK Biobank data.			
Covariate	Variable ID	Units	Description
age at menopause	3581	years	Details given in text and supplement text
age at enrollment	21022	years	Value provided as an integer
body mass index	21001	kg/m ²	Derived from measured height and weight at enrollment
systolic blood pressure	4080	mmHg	Measured at enrollment
Townsend index (SES)	189	n/a	Numeric representation of material deprivation
weekly alcohol	1558, 4462, 5364, 4429, 4418, 4451, 4407, 4440, 1588, 1578, 1608, 1568, 1598	glasses of wine equivalent per week	Annual alcohol (g) was factored according to the list of all alcohol types typically consumed. This number was divided by 52 weeks and then converted into an equivalent number of glasses of wine.
serum vitamin D	30890	nmol/L	Laboratory value from serum drawn at enrollment
parity	2734	children	Number of live births
current smoking	20116	True/False	Self-reported
takes menopausal hormone therapy (MHT)	6153	True/False	Self-reported
bilateral oophorectomy	2834 (status), 3882 (age, if applicable)	True/False	Details given in text and supplement text
hysterectomy	3591 (status), 2824 (age, if applicable)	True/False	Details given in text and supplement text
hypertension history	131286, 53	True/False	True if date of 131286 (ICD I10 diagnosis) <= date of enrollment in field 53
type II diabetes history	2443, 4041, 20002, 20003, 2976, 2986, 30750	True/False	Candidates included participants who had self-reported diabetes diagnosed by doctor that was not gestational only, took diabetes medications, or had an HbA1C that exceeded 48 mmol/mol. Those who had ever received a type 1 diabetes diagnosis code, who were diagnosed before age 35, or who required insulin within one year were then excluded (as clearly type 1 diabetes or potentially miscoded type 1 diabetes).
stroke or TIA history	20002, 131366, 53	True/False	Self-reported condition code 1081, 1082, or 1583; or, date of 131366 (ICD I63 diagnosis) preceded date of enrollment in field 53

Item 3d.

Table. Definition of outcomes in UK Biobank data.					
Outcome	ICD-10 codes	ICD-9 codes	Procedure codes	Variable ID number (or variable column name, for hospital data)	Description
Breast cancer	C50	174	n/a	40006, 40013	Cancer registry
Endometrial cancer	C54.1	182	n/a	40006, 40013	Cancer registry
Ovarian cancer	C56	183	n/a	40006, 40013	Cancer registry
Lung cancer	C34	162	n/a	40006, 40013	Cancer registry
Coronary heart disease	I20.0*, I21, I22	410, 411	K49, K50, K75, K40-K46	131298, 131300, diag_icd10*,diag_icd9*, oper4*	First occurrences, Hospital raw data*
Ischemic stroke	I63	433, 434	n/a	131366, diag_icd10*,diag_icd9*, oper4*	First occurrences, Hospital raw data*
Fracture	M80	n/a	n/a	131962	First occurrences
Osteoporosis	M80, M81	n/a	n/a	131962, 131964	First occurrences
Alzheimer disease	F00, G30	n/a	n/a	130836, 131036	First occurrences

Item 4

Table. Single nucleotide polymorphisms reported by Day et al. in Pubmed ID 26414677 used as instrumental variables in Mendelian Randomization in this study.

Locus (Closest gene)	SNP	Chr	Position (GRCh37)	Weight	Non effect Allele	Effect Allele (EA)	EA freq in WHI	β (SE) in WHI	F statistic in WHI	EA freq in UKB	β (SE) in UKB	F statistic in UKB
<i>RHBDL2, MYCBP</i>	rs4246511	1	39380385	0.22	C	T	0.31	0.14 (0.07)	4.32	0.3	0.22 (0.02)	97.97
<i>RAD54L</i>	rs12142240	1	46747301	0.13	T	C	0.3	0.04 (0.07)	0.46	0.31	0.15 (0.02)	47.41
<i>STX6</i>	rs1411478	1	180962282	0.13	A	G	0.59	0.21 (0.06)	11.68	0.6	0.14 (0.02)	42.27
<i>EXO1</i>	rs2236918	1	242017826	0.15	C	G	0.55	0.01 (0.06)	0.03	0.55	0.13 (0.02)	39.13
<i>BRE, GTF3C2, EIFB4</i>	rs704795	2	27716494	0.16	A	G	0.62	0.22 (0.06)	12.35	0.6	0.19 (0.02)	82.94
<i>MSH6</i>	rs1800932	2	48018081	0.17	A	G	0.18	0.18 (0.08)	5.31	0.19	0.21 (0.03)	63.8
<i>TLK1</i>	rs930036	2	171941018	0.19	A	G	0.62	0.11 (0.06)	3.05	0.62	0.17 (0.02)	66.84
<i>PARL, POLR2H</i>	rs16858210	3	183624010	0.14	G	A	0.26	0.16 (0.07)	5.62	0.24	0.14 (0.02)	34.32
<i>HELQ, FAM175A</i>	rs4693089	4	84373622	0.2	A	G	0.49	0.13 (0.06)	4.42	0.49	0.29 (0.02)	210.82
<i>ASCL1, MLF1IP</i>	rs6856693	4	185748806	0.16	A	G	0.43	0.22 (0.06)	12.45	0.42	0.23 (0.02)	120.39
<i>PAPD7</i>	rs427394	5	6745875	0.13	G	A	0.58	0.08 (0.06)	1.58	0.58	0.13 (0.02)	42.63
<i>SH3PXD2B</i>	rs11738223	5	171934492	0.12	A	G	0.32	0.21 (0.07)	10.46	0.33	0.08 (0.02)	12.79
<i>UIMC1</i>	rs2241584	5	175956177	0.14	A	G	0.62	0.21 (0.06)	11.22	0.61	0.17 (0.02)	62.94
<i>UIMC1</i>	rs365132	5	176378574	0.24	G	T	0.49	0.36 (0.06)	35.45	0.48	0.32 (0.02)	239.44
<i>SYCP2L, MAK</i>	rs6899676	6	10895260	0.23	A	G	0.2	0.23 (0.08)	9.16	0.2	0.28 (0.03)	121.07
<i>SYCP2L, MAK</i>	rs9393800	6	10951737	0.17	G	A	0.73	0.13 (0.07)	3.85	0.73	0.2 (0.02)	77.18
<i>MSH5, HLA</i>	rs2230365	6	31525448	0.17	C	T	0.15	0.33 (0.08)	15.59	0.14	0.17 (0.03)	33.93
<i>MSH5, HLA</i>	rs707938	6	31729359	0.17	G	A	0.68	0.28 (0.06)	18.79	0.68	0.18 (0.02)	64.71
<i>REV3L</i>	rs12196873	6	111598058	0.16	A	C	0.14	0.2 (0.09)	5.64	0.14	0.15 (0.03)	26.07
<i>STAR</i>	rs2720044	8	37980587	0.29	A	C	0.14	0.16 (0.09)	3.33	0.16	0.27 (0.03)	98.66
<i>CHD7</i>	rs10957156	8	61629401	0.14	A	G	0.23	0.15 (0.07)	4.27	0.25	0.13 (0.02)	29.68
<i>APTX</i>	rs4879656	9	33012382	0.12	A	C	0.62	0.13 (0.06)	4.11	0.62	0.11 (0.02)	25.98
<i>FBXO18</i>	rs10905065	10	5769827	0.11	A	G	0.39	0.06 (0.06)	0.93	0.39	0.1 (0.02)	22.21
<i>FSHB</i>	rs11031006	11	30226528	0.22	G	A	0.14	0.25 (0.09)	8.17	0.15	0.19 (0.03)	44.73
<i>LOC105376607</i>	rs6484478* **	11	30306440	0.1	G	A	0.21	-0.1 (0.07)	1.92	0.23	-0.01 (0.02)	0.16
<i>EIF3M</i>	rs10734411	11	32541784	0.12	A	G	0.52	0.03 (0.06)	0.31	0.52	0.13 (0.02)	39.64
<i>PRIM1, TAC3</i>	rs2277339	12	57146069	0.31	G	T	0.89	0.23 (0.1)	5.13	0.89	0.4 (0.03)	147.1
<i>HELB</i>	rs3741604	12	66696410	0.09	T	C	0.45	0.05 (0.06)	0.74	0.47	0.1 (0.02)	24.14
<i>HELB</i>	rs75770066	12	66704225	0.85	A	G	0.03	0.87 (0.21)	16.64	0.03	1.05 (0.06)	321.35
<i>HELB</i>	rs1183272	12	66735421	0.07	C	T	0.58	0.17 (0.06)	7.39	0.55	0.11 (0.02)	28.69
<i>HELB</i>	rs7397861*	12	66814466	0.1	G	C	0.36	0 (0.06)	0	0.37	0.07 (0.02)	12.4
<i>SPPL3, SRSF9</i>	rs551087**	12	121209193	0.13	G	A	0.7	0.06 (0.07)	0.72	0.71	-0.01 (0.02)	0.23
<i>MPHOSPH9</i>	rs1727326	12	123600086	0.19	C	G	0.86	0.01 (0.1)	0.01	0.86	0.17 (0.03)	31.61
<i>PIWIL1</i>	rs12824058	12	130804334	0.14	G	A	0.58	0.01 (0.06)	0.01	0.58	0.12 (0.02)	35.81
<i>TDRD3</i>	rs4886238	13	61113739	0.18	G	A	0.33	0.31 (0.06)	23.75	0.33	0.2 (0.02)	86.62
<i>APEX1, PARP2, PNP</i>	rs1713460	14	20933615	0.14	G	A	0.7	0.2 (0.07)	9.15	0.69	0.15 (0.02)	48.63
<i>INO80, RAD51</i>	rs9796	15	41271447	0.13	T	A	0.54	0.14 (0.06)	4.89	0.53	0.17 (0.02)	71.01
<i>POLG, FANCI</i>	rs1054875	15	89879126	0.19	T	A	0.58	0.02 (0.06)	0.11	0.61	0.18 (0.02)	78.23
<i>C16orf72, ABAT</i>	rs9039	16	9205363	0.12	C	T	0.71	0.08 (0.07)	1.48	0.73	0.13 (0.02)	29.87
<i>GSP11, BCAR4</i>	rs10852344	16	12016919	0.16	T	C	0.42	0.14 (0.06)	5.32	0.4	0.25 (0.02)	147.01
<i>UBE2MP1</i>	rs12599106	16	34498025	0.12	A	T	0.48	0.14 (0.06)	4.68	0.5	0.13 (0.02)	39.22
<i>RPAIN</i>	rs8070740	17	5331896	0.15	A	G	0.25	0.09 (0.07)	1.7	0.24	0.15 (0.02)	38.01
<i>STARD3, PGAP3, CDK12</i>	rs2941505	17	37832704	0.13	A	G	0.66	0.12 (0.06)	3.61	0.69	0.16 (0.02)	54.33
<i>BRCA1</i>	rs1799949	17	41245466	0.14	G	A	0.33	0.14 (0.06)	4.57	0.32	0.23 (0.02)	109.02
<i>ARID3A</i>	rs349306#	19	950694	0.23	G	A	0.87	0.17 (0.1)	2.74	0.87	0.24 (0.03)	61.17
<i>ZNF729</i>	rs7259376	19	22507705	0.11	A	G	0.55	0.24 (0.06)	15.5	0.53	0.11 (0.02)	30.08
<i>BRSK1, NLRP11, U2AF2</i>	rs11668344	19	55833664	0.41	G	A	0.64	0.43 (0.06)	46.77	0.63	0.49 (0.02)	534.83
<i>BRSK1, NLRP11, U2AF2</i>	rs2547274	19	56310228	0.28	G	C	0.09	0.27 (0.1)	6.57	0.09	0.24 (0.04)	44.53
<i>BRSK1, NLRP11, U2AF2</i>	rs12461110	19	56320663	0.17	A	G	0.65	0.26 (0.06)	16.32	0.63	0.17 (0.02)	67.43
<i>MCM8</i>	rs451417	20	5941999	0.2	A	C	0.88	0.05 (0.09)	0.31	0.88	0.25 (0.03)	66.81
<i>MCM8</i>	rs16991615	20	5948227	0.88	G	A	0.06	0.85 (0.13)	43.11	0.06	1.06 (0.04)	623.76
<i>SLCO4A1</i>	rs2236553#	20	61289743	0.16	C	T	0.75	0.07 (0.08)	0.78	0.75	0.22 (0.02)	81.7
<i>DIDO1</i>	rs13040088#	20	61549202	0.16	G	A	0.8	0.2 (0.08)	6.53	0.79	0.17 (0.02)	46.8
<i>CHEK2</i>	rs5762534	22	28633571	0.16	T	C	0.15	0.22 (0.08)	7.19	0.15	0.13 (0.03)	20.3
<i>DMC1, DDX17</i>	rs763121	22	38879940	0.16	G	A	0.65	0.06 (0.06)	0.92	0.66	0.17 (0.02)	63.63

SNP = single nucleotide polymorphism; Chr = chromosome number; SE = standard error; WHI = Women's Health Initiative; UKB = UK Biobank. * indicates SNPs with an inconsistent direction of effect between Day and WHI, # indicates 3 SNPs that failed imputation on ~10% samples in WHI, ** indicates SNPs with an inconsistent direction of effect between Day and UKB. These SNPs were excluded from further analysis.

Supplemental Results

Item 5

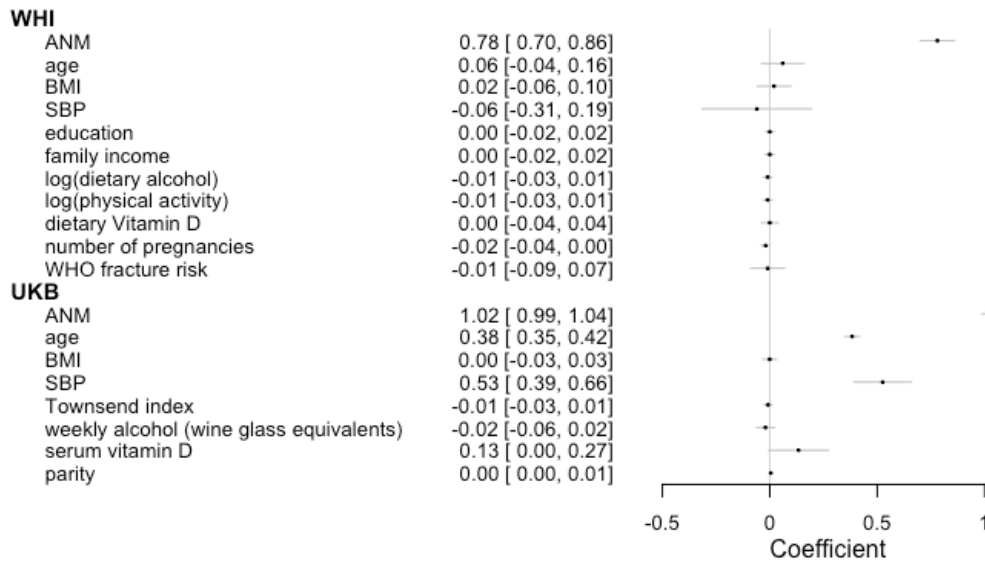
Table. Observational association results in tabular form			
Outcome and dataset	OR [95% CI]	Cases	Total
Breast cancer			
WHI	1.06 [1.03, 1.08]	8087	97703
UKB	1.15 [1.11, 1.19]	3192	91205
WHI + UKB summary	1.10 [1.01, 1.19]	11279	188908
Endometrial cancer			
WHI	1.20 [1.12, 1.27]	1322	69553
UKB	1.37 [1.27, 1.48]	748	95151
WHI + UKB summary	1.28 [1.12, 1.46]	2070	164704
Ovarian cancer			
WHI	1.07 [1.00, 1.13]	899	92111
UKB	1.03 [0.94, 1.12]	419	95304
WHI + UKB summary	1.05 [1.00, 1.11]	1318	187415
Lung cancer			
WHI	0.92 [0.89, 0.96]	2509	98113
UKB	0.85 [0.81, 0.90]	815	95390
WHI + UKB summary	0.89 [0.83, 0.96]	3324	193503
Coronary heart disease			
WHI	0.97 [0.95, 0.99]	4583	94024
UKB	0.95 [0.91, 0.99]	1798	94074
WHI + UKB summary	0.97 [0.95, 0.98]	6381	188098
Ischemic stroke			
WHI	0.96 [0.93, 0.99]	2726	96969
UKB	0.92 [0.87, 0.96]	1171	95273
WHI + UKB summary	0.94 [0.90, 0.99]	3897	192242
Fracture			
WHI	0.96 [0.94, 0.99]	8055	98112
UKB	0.87 [0.80, 0.94]	481	95258
WHI + UKB summary	0.92 [0.83, 1.02]	8536	193370
Osteoporosis			
WHI	0.95 [0.93, 0.96]	25477	97726
UKB	0.84 [0.82, 0.87]	4962	91547
WHI + UKB summary	0.89 [0.80, 1.00]	30439	189273
Alzheimer disease			
WHI	0.94 [0.91, 0.97]	3611	73798
UKB	0.89 [0.83, 0.95]	611	95462
WHI + UKB summary	0.92 [0.88, 0.97]	4222	169260

Item 6

Associations of ANM and confounders with instrument variables. ANM: Age of natural menopause, BMI: body mass index, MHT: menopausal hormone therapy, SBP: systolic blood pressure, TIA: trans ischemic attack, UKB: UK Biobank, WHI: Women’s Health Initiative, WHO: World Health Organization,

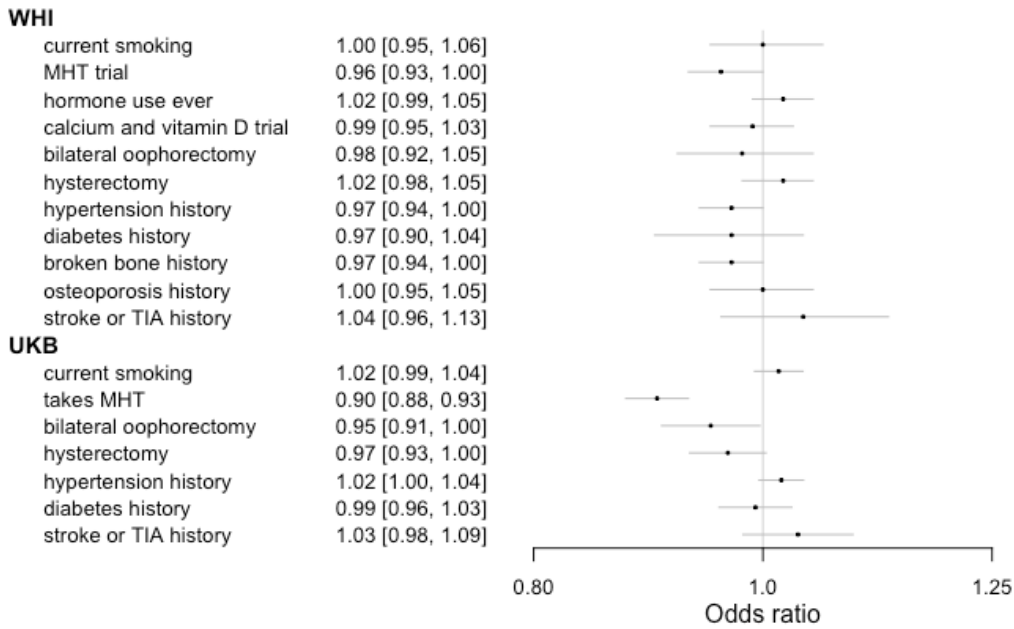
Supplementary Figure a for Item 6.

Association of instrument variable with exposure variable and continuous confounders



Supplementary Figure b for Item 6.

Association of instrument variable with binary confounders



Item 7.

Table. Mendelian Randomization association results in tabular form			
Outcome and datasets	OR [95% CI]	Cases	Total
Breast cancer			
WHI	1.82 [1.50, 2.21]	3967	17906
UKB	0.98 [0.82, 1.17]	3192	91205
NHS	1.59 [0.97, 2.60]	1089	2182
WHI + UKB summary	1.33 [0.73, 2.44]	7159	109111
Summary for all data	1.40 [0.88, 2.24]	8248	111293
Endometrial cancer			
WHI	2.37 [1.23, 4.57]	208	13200
UKB	1.37 [0.96, 1.96]	748	95151
E2C2	0.89 [0.58, 1.34]	1830	3441
WHI + UKB summary	1.68 [1.00, 2.82]	956	108351
Summary for all data	1.35 [0.83, 2.18]	2786	111792
Ovarian cancer			
WHI	1.19 [0.47, 3.00]	134	17059
UKB	1.39 [0.85, 2.27]	419	95304
Summary for all data	1.35 [0.87, 2.07]	553	112363
Lung cancer			
WHI	1.52 [0.96, 2.41]	558	17981
UKB	1.34 [0.94, 1.89]	815	95390
EAGLE+ATBC+PLCO+CSP-II GWAS	0.89 [0.47, 1.68]	835	1285
NCI GWAS	1.93 [0.83, 4.48]	498	986
High density SNP analysis	1.35 [0.51, 3.55]	369	741
WHI + UKB summary	1.40 [1.06, 1.85]	1373	113371
Summary for all data	1.35 [1.06, 1.71]	3075	116383
Coronary heart disease			
WHI	0.83 [0.61, 1.13]	1348	17357
UKB	0.94 [0.74, 1.19]	1798	94074
CHS	1.25 [0.68, 2.31]	468	1902
ARIC	1.04 [0.57, 1.86]	495	4872
FHS	0.55 [0.16, 1.84]	118	1294
MESA	2.15 [0.42, 10.90]	66	1089
WHI + UKB summary	0.90 [0.74, 1.08]	3146	111431
Summary for all data	0.93 [0.79, 1.10]	4293	120588
Ischemic stroke			
WHI	0.58 [0.40, 0.86]	830	17723
UKB	1.27 [0.94, 1.70]	1171	95273
CHS	1.28 [0.55, 2.96]	220	1925
ARIC	0.63 [0.24, 1.68]	157	4878
WTCCC2	0.66 [0.29, 1.49]	1593	3193
FHS	0.69 [0.10, 4.61]	45	1303
MESA	1.02 [0.08, 13.25]	32	1089
WHI + UKB summary	0.87 [0.41, 1.86]	2001	112996
Summary for all data	0.85 [0.58, 1.25]	4048	125384
Fracture			
WHI	0.72 [0.58, 0.89]	3310	17981
UKB	0.94 [0.60, 1.48]	481	95258
Summary for all data	0.76 [0.62, 0.94]	3791	113239
Osteoporosis			
WHI	0.95 [0.79, 1.14]	4965	17960
UKB	0.74 [0.64, 0.86]	4962	91547
Kaiser	0.76 [0.63, 0.92]	5147	27573
WHI + UKB summary	0.84 [0.66, 1.06]	9927	109507
Summary for all data	0.81 [0.69, 0.94]	15074	137080
Alzheimer disease			
WHI	1.06 [0.73, 1.54]	933	14740
UKB	0.97 [0.65, 1.45]	611	95462
Summary for all data	1.02 [0.77, 1.34]	1544	110202

Item 8.

Plot of multivariable MR results vs. univariable MR results in the UK Biobank

