

Supplemental Table 1. Baseline Characteristics

	Treatment arm		Overall (N=109)
	Lambda (N=55)	Placebo (N=54)	
Age in years, median (range)	38 (21-66)	35 (20-71)	37 (20-71)
Male, n (%)	33 (60.0%)	31 (57.4%)	64 (58.7%)
Race / Ethnicity, n (%)			
Latinx	32 (58.2%)	37 (68.0%)	67 (62.0%)
White	18 (30.0%)	12 (25.0%)	30 (27.8%)
Asian	4 (5.0%)	5 (6.7%)	9 (8.3%)
Native Hawaiian or other Pacific Islander	2 (3.3%)	0 (0%)	2 (1.9%)
BMI (kg/m²), median (IQR)	27.6 (25.4-31.1)	28.5 (24.8-32.3)	27.7 (24.9-32.0)
Comorbid conditions			
Hypertension	9 (15.0)	5 (8.3)	14 (11.7)
Diabetes	4 (6.7)	8 (13.3)	12 (10.0)
Asthma	2 (3.3)	2 (3.3)	4 (3.3)
Heart Disease	3 (5.0)	1 (1.7)	4 (3.3)
Asymptomatic at baseline, n (%)	6 (10.0%)	2 (3.3%)	8 (6.7%)
Duration of symptoms in days prior to randomization, median (IQR)^a	4 (3-6)	5 (3-5)	5 (3-6)
Baseline laboratory values, median (IQR)			
White blood cell (WBC) count, cells/ μ l	5.5 (4.3-6.8)	5.6 (4.0-7.5)	5.5 (4.1-7.1)
Absolute lymphocyte count (ALC), cells/ μ l	1.5 (1.2-1.9)	1.5 (1.2-2.3)	1.5 (1.2-2.2)
Aspartate aminotransferase, IU/L	31 (26-41)	30 (25-39.3)	30 (25-41)
Alanine aminotransferase, IU/L	32.5 (21-52.3)	30.5 (23-47.5)	31.5 (22-50.3)
Baseline oropharyngeal SARS-CoV-2 cycle threshold, median (IQR)^b	30.9 (26.4-33.8)	29.3 (26.4-34.3)	30.3 (26.4-34.3)
Baseline SARS-CoV-2 IgG seropositivity, n (%)	17 (31.5%)	24 (44.4%)	41 (38.0%)

IQR inner quartile range

^aAmong n = 103 participant who reported symptoms prior to randomization (n = 48 in lambda and n = 55 in placebo)

^bAmong n = 87 participants with detectable OP virus (n = 44 in lambda and n = 43 in placebo)

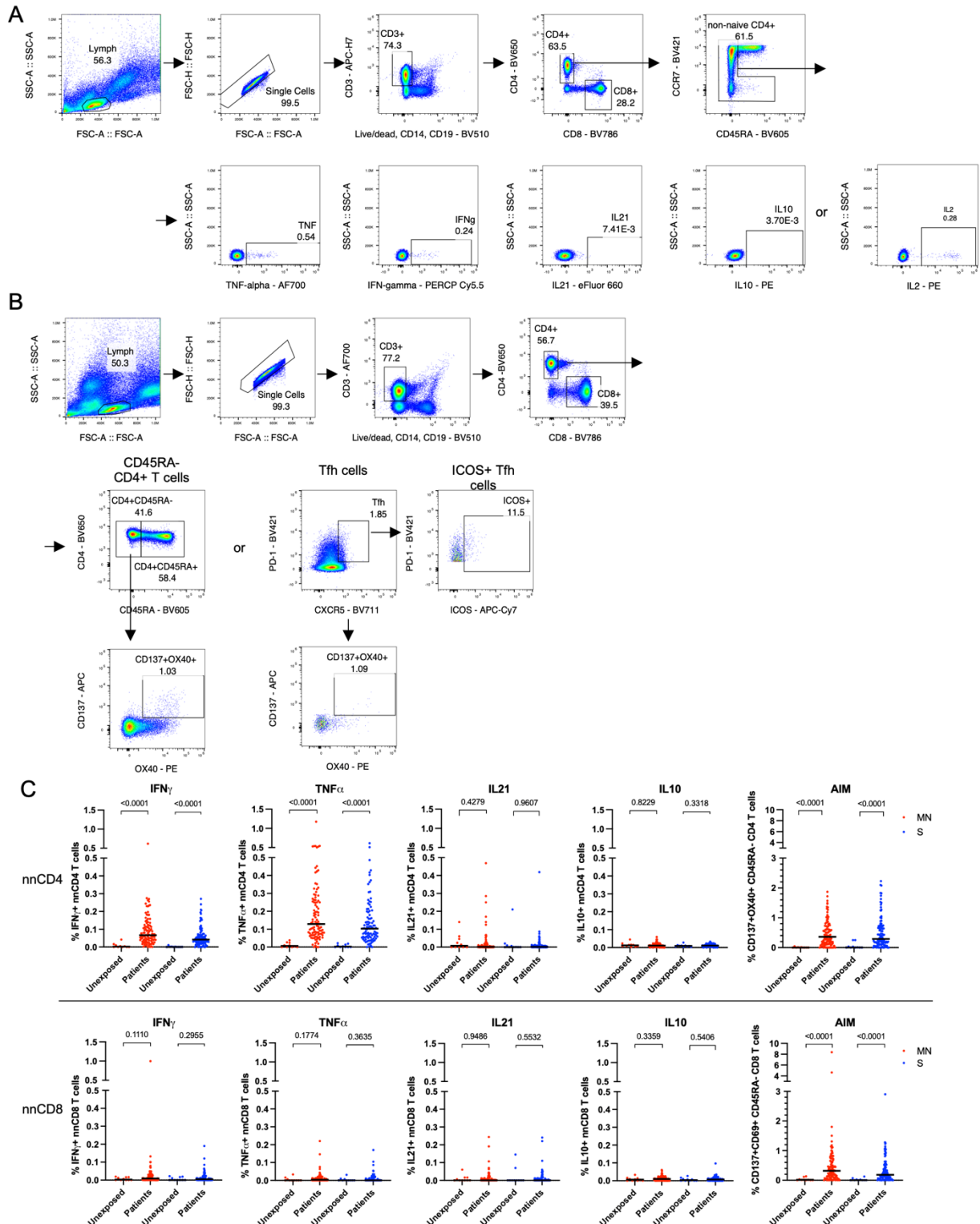
Supplemental Table 4: ICS antibody panel

ICS Antibody Panel					
Surface Antibodies	Fluorochrome	Clone	Vendor	Catalog	Amount Per 50 uL
CCR7	BV421	G043H7	BioLegend	353208	2.5 uL
CD14	BV510		BioLegend	301842	0.5 uL
CD19	BV510	M5E2	BioLegend	302242	0.5 uL
LIVE/DEAD	Aqua	HB19	Invitrogen	L34965	0.25 uL
CD45RA	BV605	HI100	BioLegend	304134	0.4 uL
CD4	BV650	RPA-T4	BioLegend	300536	1 uL
CD8A	BV785	RPA-T8	BioLegend	301046	1 uL
CD107A	FITC	H4A3	BioLegend	328606	1 uL
CD3	APC-H7	SK7	BD Biosciences	560176	2.5 uL
Intracellular Antibodies	Fluorochrome	Clone	Vendor	Catalog	Amount Per 50 uL
IFN γ	PerCP Cy5.5	4S.B3	BioLegend	502526	0.5 uL
IL21	eFluor660	eBio3A3-N2	eBioscience	50-7219-42	1.25 uL
TNF	AF700	MAb11	BD Biosciences	557996	0.5 uL
IL2	PE	MQ1-17H12	BioLegend	500307	2 uL
IL10	PE	JES3-19F1	BD Biosciences	559330	2 uL

Supplemental Table 5: AIM antibody panel

AIM Antibody Panel					
Antibody	Fluorochrome	Clone	Vendor	Catalog	Amount Per 50 uL
PD-1	BV421	EH12.2H7	BioLegend	329920	2 uL
CD14	BV510	M5E2 HB19	BioLegend	301842	0.5 uL
CD19	BV510		BioLegend	302242	0.5 uL
LIVE/DEAD	Aqua		Invitrogen	L34965	0.25 uL
CD45RA	BV605	HI100	BioLegend	304134	0.4 uL
CD4	BV650	RPA-T4	BioLegend	300536	1 uL
CXCR5	BV711	J252D4	BioLegend	356934	1 uL
CD8A	BV785	RPA-T8	BioLegend	301046	1 uL
CD69	FITC	FN50	BD Biosciences	555530	1.25 uL
OX40	PE	Ber-ACT35	BioLegend	350004	2.5 uL
CD137	APC	4B4-1	BioLegend	309810	2.5 uL
CD3	AF700	SK7	BioLegend	344822	1 uL
ICOS	APC-Cy7	C398.4A	BioLegend	313530	0.8 uL

Supplemental Figure 1

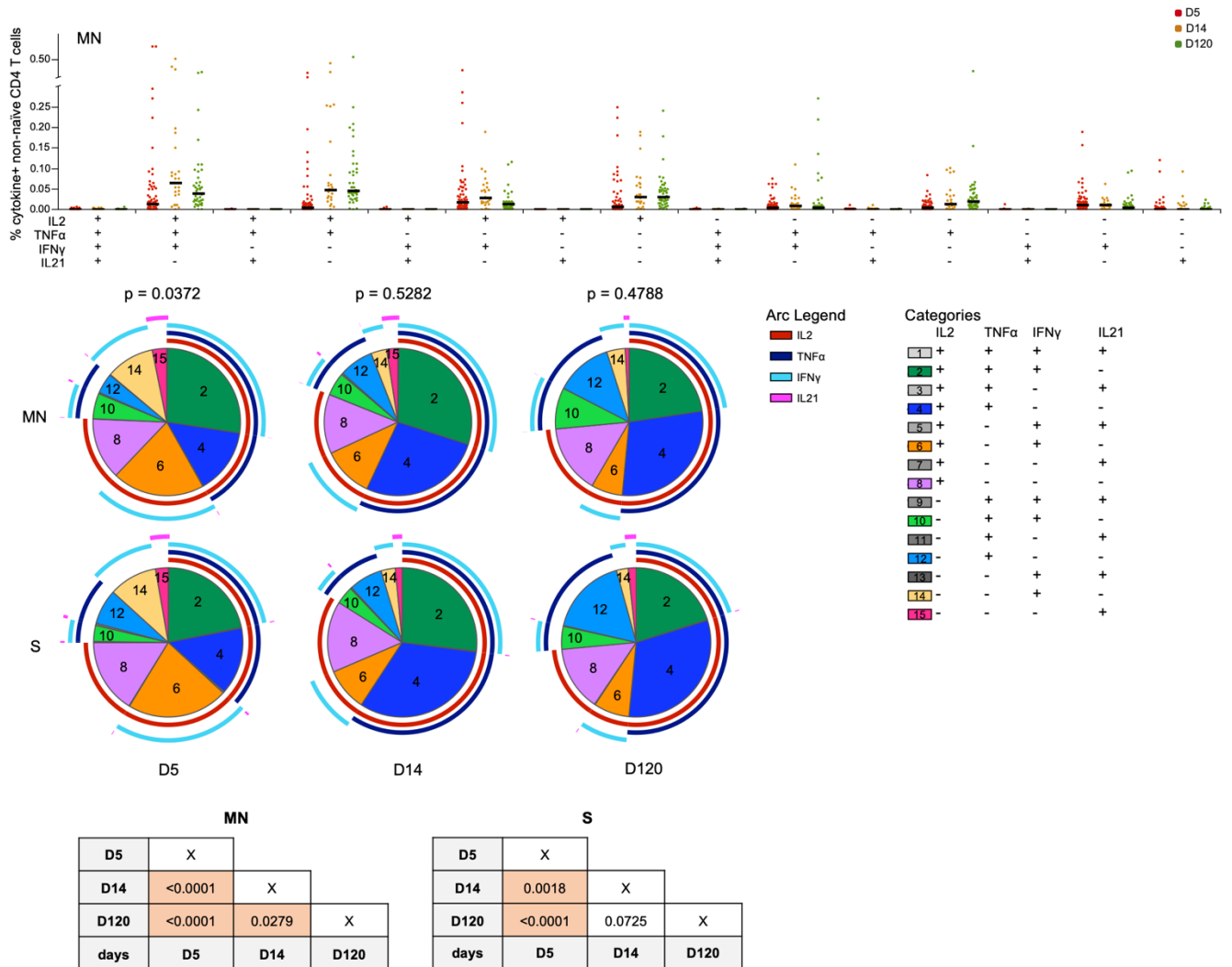


Supplemental Figure 1. Flow cytometry gating strategies and comparing CD4⁺ T and CD8⁺ cell responses between unexposed controls and COVID-19 outpatients.

Flow cytometry gating strategies for A) ICS or B) AIM assays are shown. C) PBMCs of unexposed controls (n=10) and COVID-19 outpatients at day 28 post-enrollment were stimulated with MN (ICS: n=102, AIM:

n=107) and S proteins (ICS: n=100, AIM=105) *in vitro*, stained and analyzed by flow cytometry. The absolute percentage of IFN γ ⁺, TNF α ⁺, IL21⁺, IL10⁺ non-naïve and AIM⁺ CD45RA⁻ CD4⁺ T cells (nnCD4, top panel) CD4⁺ T cells and CD8⁺ T cells (nnCD8, bottom panel) post antigen stimulation (MN: red, S: blue) are illustrated (black line = median, Mann Whitney test).

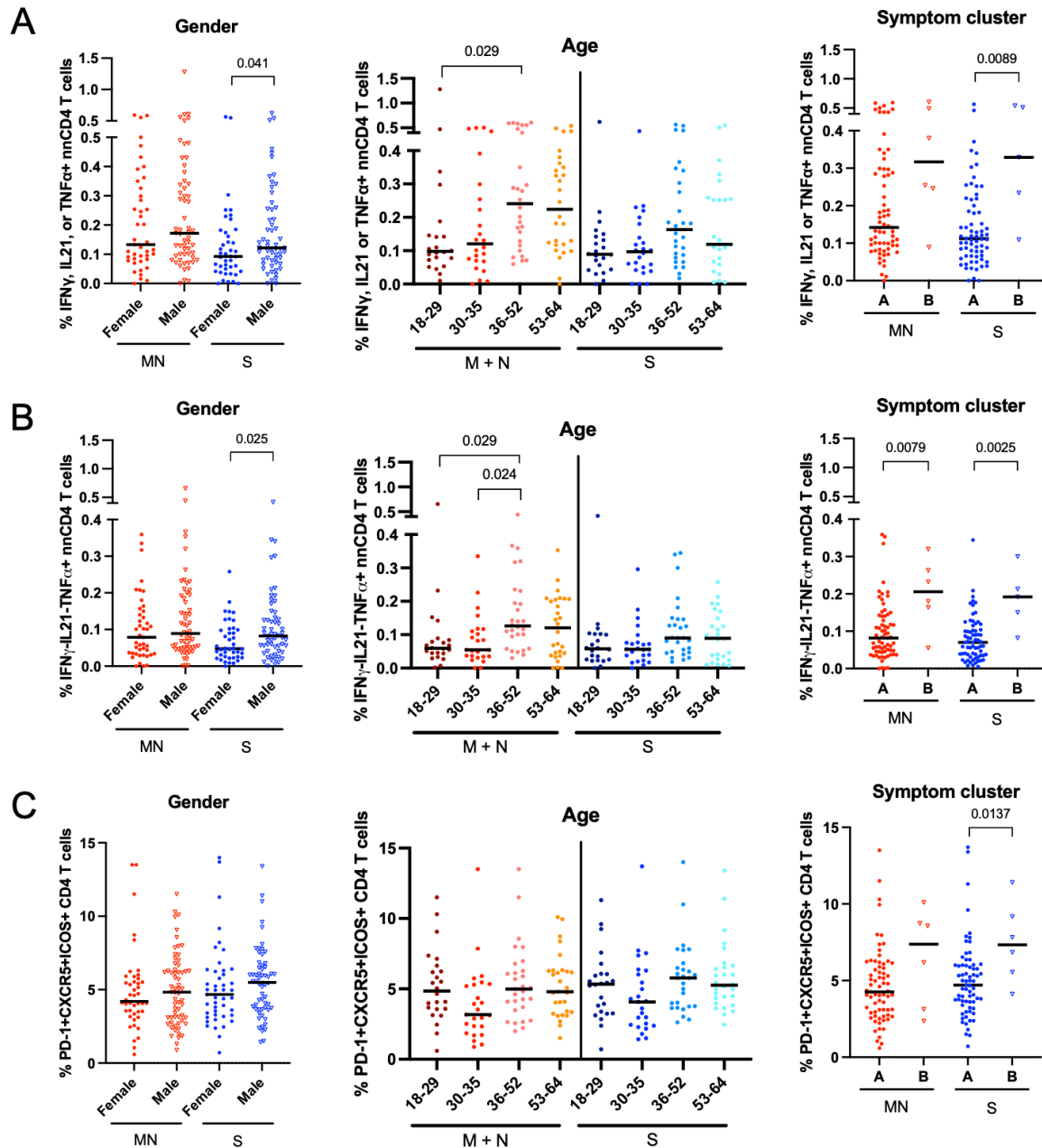
Supplemental Figure 2



Supplemental Figure 2. The majority of IFN γ -, TNF α - or IFN γ - and TNF α -producing non-naïve CD4 T cells co-produce IL2.

A) PBMCs of COVID-19 outpatients were stimulated with MN or S proteins in vitro, stained and analyzed by flow cytometry. Depicted are the absolute percentage (scatter plot, black line = median) and the relative proportion (pie charts, mean) of each individual combination of IL2, TNF α , IFN γ and IL21-producing non-naïve CD4⁺ T cells (Boolean gating) stratified by days post-enrollment (D5: n=24, D14: n=24, D120: n=24). The P values indicated on top of the pie charts are calculated using the partial permutation test which tests the association between MN and S protein stimulation. The P values in the tables indicates the significance of the associations between the different days since symptom onset calculated using the partial permutation test (left = MN-stimulated T cells, right = S-stimulated T cells). Values shown are background ('media only' condition) subtracted.

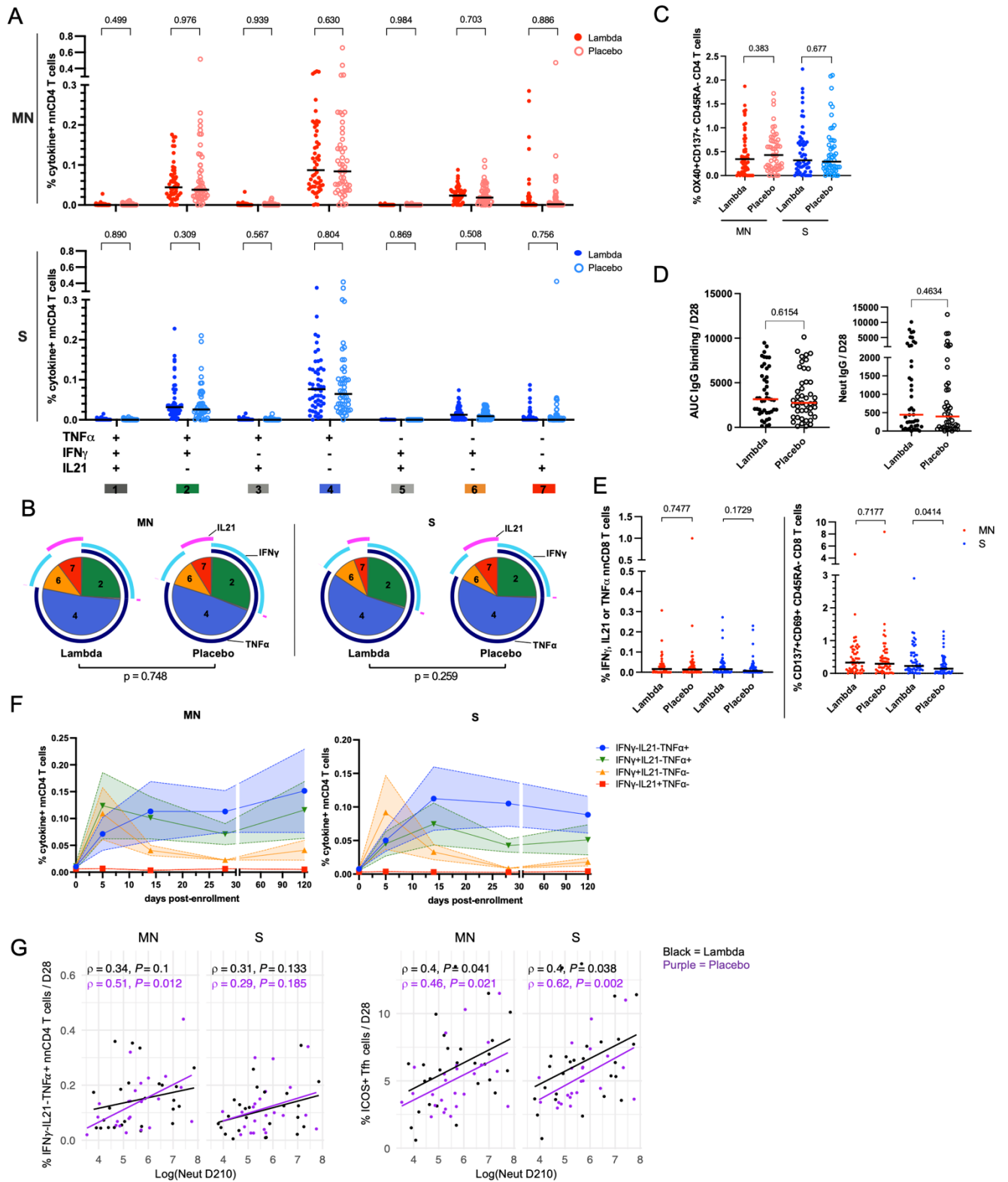
Supplemental Figure 3



Supplemental Figure 3 Day 28 IFN γ -IL21-TNF α ⁺ non-naïve CD4⁺ T cells are associated with gender, age and symptom cluster.

Shown are scatter plots of absolute percentages of MN protein- (red) or S protein-stimulated (blue) A) IFN γ , IL21 or TNF α -producing non-naïve CD4⁺ T cells, B) IFN γ -IL21-TNF α ⁺ non-naïve CD4 T cells and C) ICOS⁺ Tfh cells collected at day 28 post-enrollment (black line = median). The plots are stratified by gender (left), age (middle) and symptom cluster (right). Age categories were defined by participant age quartiles. Cluster A are characterized by higher prevalence of runny nose and sore throat. Cluster B are characterized by greater symptom severity and/or later peak severity (chest pain/pressure, fatigue, and myalgias) as described by Jacobson et al. P values shown in the T cells data versus gender and symptom cluster are calculated using the Mann Whitney test. Kruskal-Wallis rank sum test with Dunn's multiple comparisons test was used to calculate the P values in the T cell data versus age plots.

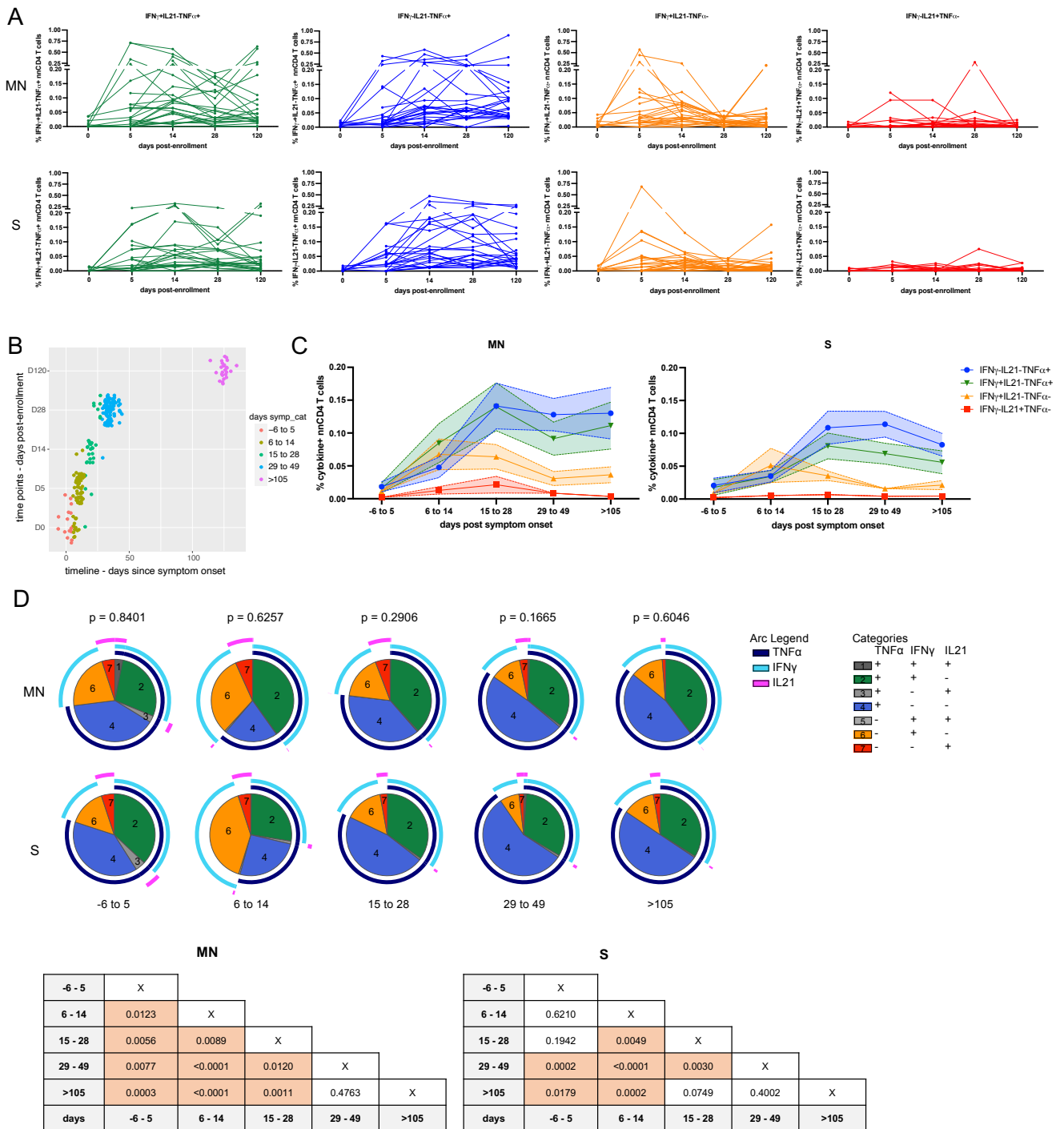
Supplemental Figure 4



Supplemental Figure 4. SARS-CoV-2-specific CD4⁺ T cell subsets do not differ between participants randomized to Lambda or placebo. PBMCs of COVID-19 outpatients on D28 post-enrollment were

stimulated with spike (S) or combination of membrane (M) and nucleocapsid (N) proteins in vitro, stained and analyzed by flow cytometry. A) The absolute percentage (scatter plot, black line = median) of each individual combination of TNF α , IFN γ and IL21-producing non-naïve CD4 $^+$ T cells stratified by treatment arms (closed circle: Lambda n=52, open circle: Placebo, n=50). Top panel depicts MN protein-stimulated CD4 $^+$ T cells (red) and bottom panel S protein-stimulated CD4 $^+$ T cells (blue). B) The pie charts represent the relative proportion (mean) of each individual combination of cytokine-producing non-naïve CD4 $^+$ T cells are shown stratified by antigenic stimuli (MN n=102, S n=100). The P value shown under the pie charts is calculated using a partial permutation test. C) Shown are absolute percentages of OX40 $^+$ CD137 $^+$ CD45RA $^-$ CD4 $^+$ T cells stratified by treatment arms (Lambda n=54, Placebo n=53) and grouped by antigenic stimuli with the black line indicating the median. D) SARS-CoV-2 full length S binding IgG (AUC) (Lambda n=44, Placebo n=45) and neutralizing (Neut) antibody IgG titers (Lambda n = 44, Placebo n = 42) on D28 stratified in treatment arms are shown (red line = median). E) Stratified by treatment arm, in the top panel the absolute percentage of all cytokine $^+$ (TNF α^+ or IFN γ^+ or IL21 $^+$) non-naïve (left) or AIM $^+$ CD45RA $^-$ (right) CD8 $^+$ T cells are depicted (placebo: n=50, Lambda: n=52, Black line = median). A, C-E) P values shown are calculated using the Mann Whitney test. F) PBMCs from 12 COVID-19 outpatients randomized to placebo arm sampled at day 5 (D5), day 14 (D14), day 28 (D28) and month 4 (D120) (n= 5 also sampled on day of enrollment (D0), D14: n=11 and D120: n=11) were stimulated with MN (left) or S (right) proteins in vitro, stained and analyzed by flow cytometry. The mean and SEM of the absolute percentage of background-subtracted single positive TNF α^- , (blue), IFN γ^- (yellow), IL21- (red) or TNF α and IFN γ -producing non-naïve CD4 $^+$ T cells (green) of samples derived from the placebo arm only at sequential time points post-enrollment are shown. G) Scatter plots comparing antigen-stimulated IFN γ IL21 $^-$ TNF α^+ non-naïve CD4 $^+$ T cells (MN: n=48, S: n=47) or ICOS $^+$ Tfh cells (right, MN: n=52 , S: n=50) collected at D28 with neutralizing antibody titers collected at day 210 (D210) post-enrollment are shown, which are stratified in treatment arms (Lambda = black, Placebo = purple). The neutralizing antibody titers are presented in natural logarithm and added +1 to allow for inclusion of participants with no neutralizing activity. The rho (ρ) and P values were calculated using spearman's correlation (Benjamini-Hochberg corrected). The lines represent the fitted linear relationship between the indicated data. All values shown are background ('media only' condition) subtracted. AUC = area under the curve.

Supplemental Figure 5

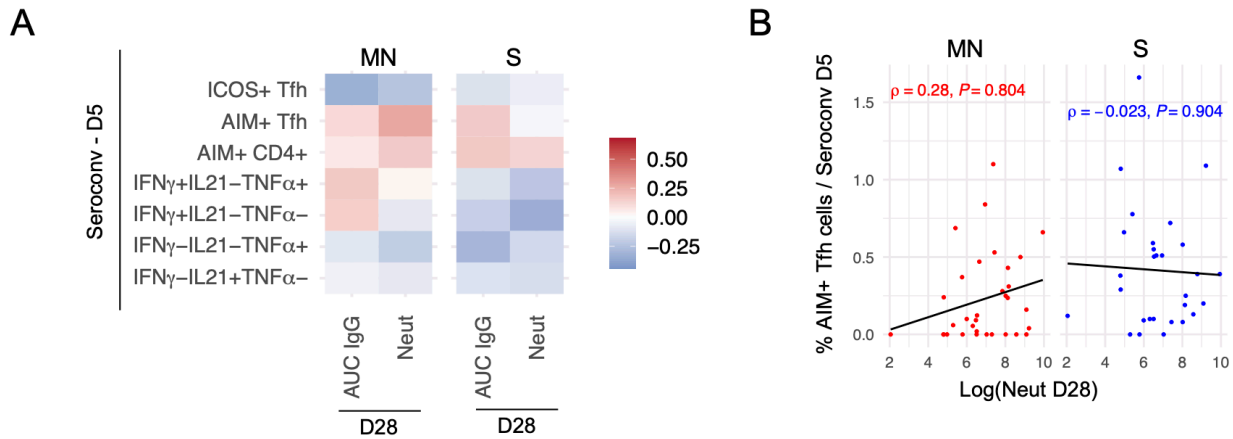


Supplemental Figure 5. Longitudinal analysis of quality and magnitude of SARS-CoV-2-specific CD4⁺ T cell responses over time.

A) Shown are absolute percentages of paired individual values of indicated non-naïve CD4⁺ T cell populations which are connected over time post-enrollment. B) Patients were re-grouped based on days since symptom onset (-6 to 5 (n=16), 6 to 14 (n=67), 15 to 28 (n=30), 29 to 49 (n=94) and >105 days (n=23)). Symptom data was missing for 6 patients, resulting in 10 missing data points in the days since onset group. The graph depicts the distribution of days since symptom onset on a timeline (x-axis) versus

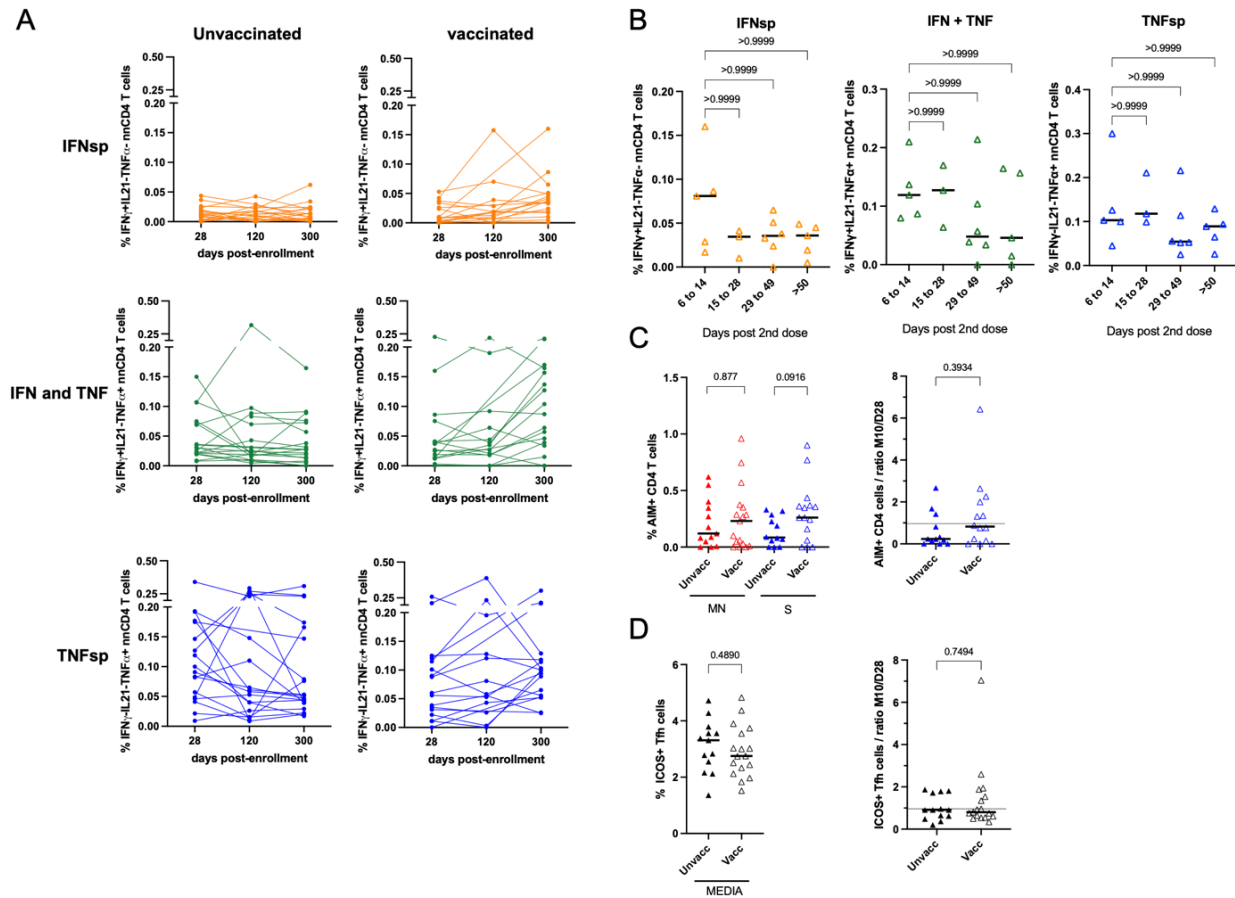
the grouped days post-enrollment (y-axis). The new categories defined are shown in different colors. The categories are selected with the kinetics of antigen-specific T cell development in mind. The numbers were chosen based on number of weeks (-6 to 5 = <1 week, 6 to 14 = < or =2 weeks, 15 to 28 = 2 – 4 weeks, 29 to 49 = 4 to 7 weeks, >105 = >15 weeks). C) The mean and SEM of the absolute percentage of background-subtracted $\text{IFN}\gamma\text{IL21}^-\text{TNF}\alpha^+$ (blue), $\text{IFN}\gamma^+\text{IL21}^-\text{TNF}\alpha^-$ (yellow), $\text{IFN}\gamma^-\text{IL21}^+\text{TNF}\alpha^-$ (red) or $\text{IFN}\gamma^+\text{IL21}^-\text{TNF}\alpha^+$ non-naïve CD4^+ T cells (green) of sequential timepoints of days since symptom onset are shown. Non-naïve CD4^+ T cells stimulated with MN (lef) or S (right) proteins are illustrated. D) Depicted are the relative proportion (pie charts, mean) of each individual combination of $\text{TNF}\alpha$, $\text{IFN}\gamma$ and IL21 -producing non-naïve CD4^+ T cells (Boolean gating) stratified by days since symptom onset are shown (-6 to 5: n=8, 6 to 14: n=26, 15 to 28: n=23, 29 to 49: n=23, and >105: n=23). The P values indicated on top of the pie charts are calculated using the partial permutation test which tests the association between MN and S protein stimulation. The P values in the tables indicates the significance of the associations between the different days since symptom onset calculated using the partial permutation test (left = MN protein-stimulated T cells, right = S protein-stimulated T cells). Values shown are background ('media only' condition) subtracted.

Supplemental Figure 6



Supplemental Figure 6. Early T cell responses of participants who seroconverted do not correlate with late SARS-CoV-2-specific antibody titers. A) In the heatmap spearman's correlations (Benjamini-Hochberg corrected) are shown between the indicated MN protein- (left) or S protein-stimulated (right) T cell data collected at day 5 (D5) from participants who seroconverted and S protein IgG binding (AUC IgG) or neutralizing antibody (Neut) titers collected at day 28 (D28) post-enrollment. Participants who seroconverted (n=39) were defined by lacking S protein binding IgG titers at the start of enrollment and having >0.25 OD₄₅₀ collected by ELISA at later timepoints. B) Scatter plots comparing MN protein- (left/red) and S protein-stimulated (right/blue) AIM⁺ Tfh cells collected at D5 from participants who seroconverted with neutralizing titers at D28 (Neut D28) post-enrollment are depicted (MN: n=33, S: n=29). The neutralizing antibody titers are presented in natural logarithm and added +1 to allow for inclusion of participants with no neutralizing activity. The rho (ρ) and P values were calculated using spearman's correlation (Benjamini-Hochberg corrected). The lines represent the fitted linear relationship between the indicated data. AUC = area under the curve.

Supplemental Figure 7



Supplemental Figure 7. Magnitude of $IFN\gamma^+IL21^-TNF\alpha^-$ and $IFN\gamma^+IL21^-TNF\alpha^+$ non-naïve $CD4^+$ T cells following mRNA vaccination increases compared to D28 and M4 time points. PBMCs of COVID-19 outpatients who received full doses of the mRNA COVID-19 vaccine and who did not receive the vaccine prior to the M7 or M10 follow-up visit were stimulated with MN or S proteins in vitro, stained and analyzed by flow cytometry. A) The absolute percentage of paired $IFN\gamma^+IL21^-TNF\alpha^-$ (IFNsp, yellow), $IFN\gamma^+IL21^-TNF\alpha^+$ (IFN γ and TNF α , green), and $IFN\gamma^+IL21^-TNF\alpha^+$ non-naïve $CD4^+$ T cells (TNFsp, blue) after S protein stimulation of D28, D120 (M7) and D300 (M10) post-enrollment are shown (n=19). B) The absolute percentage of indicated cytokine-producing non-naïve $CD4^+$ T cells stratified by days since second dose at the time of sampling are depicted. The days categories are selected with the kinetics of antigen-specific T cell development in mind. The numbers were chosen based on number of weeks (6 to 14 = < or = 2 weeks, 15 to 28 = 2 – 4 weeks, 29 to 49 = 4 to 7 weeks, >50 = > 8 weeks). P values are calculated by using the Kruskal-Wallis rank sum test with Dunn’s multiple comparisons test. C) Stratified by vaccination status, the absolute percentage (left) and the ratio between M10 and D28 of AIM $^+$ (CD137 $^+$ /OX40 $^+$) CD45RA $^-$ $CD4^+$ T cells (right) stimulated with the MN (red) or S protein (blue) are shown. D) Stratified by vaccination status, the absolute percentage (left) and the ratio between M10 and D28 of unstimulated (‘media only’) ICOS $^+$ Tfh cells (PD-1 $^+$ CXCR5 $^+$) (right) are shown. C, D) The P values shown are calculated using the Mann Whitney test.