

# The spread of SARS-CoV-2 variant Omicron with the doubling time of 2.0–3.3 days can be explained by immune evasion

Frederic Grabowski, Marek Kočańczyk, and Tomasz Lipniacki\*

Department of Biosystems and Soft Matter,  
Institute of Fundamental Technological Research,  
Polish Academy of Sciences, 02-106 Warsaw, Poland

\*Corresponding author's e-mail: [tlipnia@ippt.pan.pl](mailto:tlipnia@ippt.pan.pl) (T.L.)

## Abstract

Omicron, the novel highly mutated SARS-CoV-2 Variant of Concern (VOC, Pango lineage B.1.1.529), was first collected in early November 2021 in South Africa. By the end of November 2021, it had spread and approached fixation in South Africa, and had been detected on all continents. We analyzed the exponential growth of Omicron over the four-week periods in two most populated South Africa's provinces, Gauteng and KwaZulu-Natal, arriving at the doubling time estimates of respectively 3.3 days [95% CI: 3.2–3.4 days] and 2.7 days [95% CI: 2.3–3.3 days]. Similar or even shorter doubling times were observed in other locations: Australia (3.0 days), New York State (2.5 days), UK (2.4 days), and Denmark (2.0 days). Log-linear regression suggests that the spread began in Gauteng around October 11, 2021, however, due to presumable stochasticity in the initial spread, this estimate can be inaccurate. Phylogenetics-based analysis indicates that the Omicron strain started to diverge in between October 6 and October 29, 2021. We estimated that the weekly growth of the ratio of Omicron to Delta is in the range 7.2–10.2, considerably higher than the growth of the ratio of Delta to Alpha (estimated to be in the range 2.5–4.2), and Alpha to pre-existing strains (estimated to be in the range of 1.8–2.7). High relative growth does not necessarily imply higher Omicron infectivity. A two-strain SEIR model suggests that the growth advantage of Omicron may stem from immune evasion, which permits this VOC to infect both the recovered and the fully vaccinated individuals. As we demonstrated within the model, immune evasion is more concerning than increased transmissibility, because it can facilitate larger epidemic outbreaks.

**Keywords:** COVID-19 pandemic, SARS-CoV-2, Omicron variant, immune evasion

NOTE: This preprint reports new research that has not been certified by peer review and should not be used to guide clinical practice.

## Introduction

Omicron, the novel SARS-CoV-2 Variant of Concern (VOC, Pango lineage B.1.1.529, Nextstrain clade identifier 21K) was first collected in South Africa on November 2, 2021, (GISAID [1] sequence accession ID: EPI\_ISL\_8182767). Compared to the original SARS-CoV-2 virus, Omicron carries 30 amino acid non-synonymous substitutions, three small deletions, and one small insertion in the spike protein [2]. Altogether, Omicron has 51 amino-acid level mutations, and its closest known sibling has 15 mutations (GISAID sequence accession ID: EPI\_ISL\_622806) with only 9 common mutations, implying a distance of 42 mutations from the last common ancestor (based on the phylogenetic tree generated by Nextstrain [3]). The collection date of the sibling genome, September 13, 2020, suggests more than a year of evolution in an isolated niche, possibly in an immunocompromised host, but more data is necessary to rule out or confirm the existence of hidden branches (see Ref. [4] for discussion). The lineage started spreading rapidly in South Africa's Gauteng province in November 2021, approaching fixation in whole South Africa by the end of that month and causing abrupt epidemic outbreaks across South Africa, then Europe, and finally other continents. In all these locations, Omicron outcompeted Delta VOC (lineage B.1.617.2), which in October 2021 accounted for more than 99% of genomes sequenced in Europe, North America and Oceania, more than 90% in Asia and South America, and nearly 90% in Africa.

The rapid spread of Omicron both in South Africa, having a widespread infection-induced seroprevalence [5], and in Western European countries, with a high proportion of vaccinated population [6], suggests immune evasion that may be linked to the high number of mutations in viral spike glycoprotein, the major target of neutralizing antibodies [7]. This is confirmed by a growing number of (i) *in vitro* studies showing Omicron resistance to humoral immunity provided by vaccine- or pre-existing variant infection-induced antibodies, as well as epidemiological studies indicating (ii) significantly reduced vaccine effectiveness against infection with Omicron and (iii) higher chance of reinfections with Omicron compared to Delta.

(i) For two mRNA-based vaccines, BNT162b2 (Pfizer) and mRNA-1273 (Moderna), Liu *et al.* demonstrated a >21-fold and >8.6-fold decrease (Omicron versus D614G) in ID<sub>50</sub> (infectious dose), respectively. For two vector vaccines, Ad26.COV2.S (Johnson & Johnson) and ChAdOx1 (AstraZeneca), all samples obtained from patients without a previous history of SARS-CoV-2 infection were below the level of detection against Omicron [8]. After three homologous mRNA vaccinations, the average ID<sub>50</sub> drop was 6.5-fold [8]. Planas *et al.* showed that sera from either BNT162b2 or ChAdOx1 vaccine recipients (sampled 5 months after complete vaccination) barely inhibited Omicron. Sera from COVID-19 convalescent patients (collected 6 or 12 months post symptoms) displayed low-to-absent neutralizing activity against Omicron, whereas administration of a booster dose of BNT162b2 as well as vaccination of previously infected individuals generated an anti-Omicron neutralizing response, but with titers 5–31-fold lower than against Delta [9]. Omicron VOC was found 5.3–7.4-fold less sensitive than Beta VOC when assayed with serum samples obtained from individuals inoculated with 2 mRNA-1273 doses [10]. A meta-analysis of 24 studies showed a decrease in the neutralization titre (not significantly

different between different vaccines) compared to the ancestral virus for previous four VOCs: Alpha (1.6-fold), Gamma (3.5-fold), Delta (3.9-fold), and Beta (8.8-fold) [11]. This loss of neutralization activity is not as substantial as in the case of Omicron [8]. These findings are in line with another study that shows barely detectable serum neutralizing activity against Omicron after two mRNA vaccination doses (and still much lower neutralizing activity after the “booster” dose in relation to wild-type virus as well as Delta VOC) [12].

(ii) Andrews *et al.* showed a decrease of vaccine effectiveness against symptomatic infection by Omicron with respect to Delta [13]. Half a year after two-dose ChAdOx1 vaccination the effectiveness was 42% against Delta, with no effect observed against Omicron starting 15 weeks after second ChAdOx1 vaccination. In the case of BNT162b2, the protection 15 weeks after vaccination was 63% against Delta and 34–37% against Omicron. The BNT162b2 booster increases protection to above 93% against Delta and 75% against Omicron [13]. A report of UK Health Security Agency confirms these results and additionally indicates that the mRNA “booster” effect against Omicron, but not against Delta, wanes rapidly in time to about 40% 10 weeks post “booster” dose [14]. These findings are in line with a report of MRC Centre for Global Infectious Disease Analysis indicating a significantly increased risk of an Omicron case compared to Delta for those with vaccine status AZ 2+weeks post-dose 2 (PD2), Pfizer 2+w PD2, AZ 2+w post-dose 3 (PD3) and PF 2+w PD3 vaccine states with hazard ratios of 1.86 (95% CI: 1.67–2.08), 2.68 (95% CI: 2.54–2.83), 4.32 (95% CI: 3.84–4.85) and 4.07 (95% CI: 3.66–4.51), respectively [15].

(iii) The same report indicates that Omicron is associated with a 5.41 (95% CI: 4.87–6.00)-fold higher risk of reinfection compared with Delta [15].

Although all the evidence is based on a limited number of cases and may be influenced by population-level biases, one can expect that the hazard ratio of Omicron versus Delta infection is in the range 2–5 and depends principally on specific vaccines, proportion of population vaccinated by the “booster” dose, and resistance after recovery from COVID-19.

In this work, we estimate the Omicron variant doubling time in South Africa based on the daily number of new COVID-19 cases in the two most populated South Africa’s provinces, Gauteng and KwaZulu-Natal [16]. Further, we repeat this estimation for Australia, UK, Denmark, and New York State, four locations that differ with respect to their COVID-19 epidemic histories and proportions of COVID-19 vaccine manufacturers. In all these locations, new COVID-19 cases are expected to be relatively reliably reported and have their viral genomes screened by sequencing. Based on data for three latter locations we showed that the weekly growth of the ratio of Omicron to Delta cases significantly exceeds previous weekly growths of the ratio of Delta to Alpha cases, and the ratio of Alpha cases to cases caused by pre-existing strains. To rule out hidden spread of Omicron variant, which could potentially influence the above estimates, we use an Omicron phylogenetic tree from Nextstrain to estimate the strain divergence date. Finally, we employ a two-strain mathematical model to demonstrate that observed rapid outbreaks of Omicron strain can be explained solely by immune evasion, which expands the pool of individuals susceptible to infection.

## Materials and Methods

### Genomic sequence-based analysis

All data used in this study were retrieved as of January 9, 2022. The GISAID [1] data include genomes with submission date earlier than January 6, 2022.

In Fig. 1 the weekly cases of Omicron, Delta, and pre-existing strains were estimated based on GISAID data and the cumulative number of COVID-19 cases in Gauteng and KwaZulu-Natal (DSFSI at the University of Pretoria, <https://github.com/dsfsi/covid19za/tree/master/data>). For Gauteng this dataset was amended by changing the number of cases from 8099 to 605 for November 23, 2021 using information from the South African National Institute for Communicable Diseases (NICD, <https://www.nicd.ac.za/latest-confirmed-cases-of-covid-19-in-south-africa-23-november-2021>). According to NICD, the difference results from a retrospective addition of 7494 antigen test results. The dataset used for Fig. 1A and Fig. 1C is provided as Supplementary Table S1.

Mobility in Gauteng and KwaZulu-Natal (Fig. 1B) was assessed based on the COVID-19 Community Mobility Reports from Google (<https://www.google.com/covid19/mobility>, accessed on January 9, 2022). Weekly averages were calculated based on workdays.

The Omicron strain divergence date and mutation accumulation rate (Fig. 1D) were determined by Poisson regression, assuming that the mean number of mutations grows linearly in time. The Omicron phylogenetic tree (with last update on January 3, 2022) was retrieved from Nextstrain [4]; sample collection dates of genome sequences selected by Nextstrain were retrieved from GISAID. The resulting dataset is provided as Supplementary Table S2.

Two lists of GISAID IDs and corresponding acknowledgments for all genomes collected from April 19, 2021 till January 2, 2022 in Gauteng and KwaZulu-Natal are provided as Supplementary Table S3 and Supplementary Table S4.

In Fig. 2 and Fig. 3 the weekly cases of Omicron, Delta and pre-existing strains were estimated based on sequence data from GISAID and cases data aggregated by the Johns Hopkins University [17]. The datasets used for Fig. 2 and Fig. 3 are provided as Supplementary Table S5.

The Omicron doubling time (Fig. 1C, Fig. 2B, Fig. 2E, Fig. 3B, and Fig. 3E) was estimated by log-linear regression of the (estimated) number of Omicron cases in the exponential phase of its growth. Daily new cases were aggregated by week. An appropriate four-week period was used in each location except Australia, for which a six-week period was used.

The weekly (multiplicative) growth rates of ratios of an emerging to a pre-existing strain (Fig. 2C, Fig 2F, Fig. 3C, and Fig. 3F) were estimated also by log-linear regression. To enable comparison between emerging strains, we select four-week periods of the fastest growth, so that in at least two of those weeks the emerging strain has lower counts than the pre-existing one. This additional criterion ensures that the analyzed period captures the emergence of the

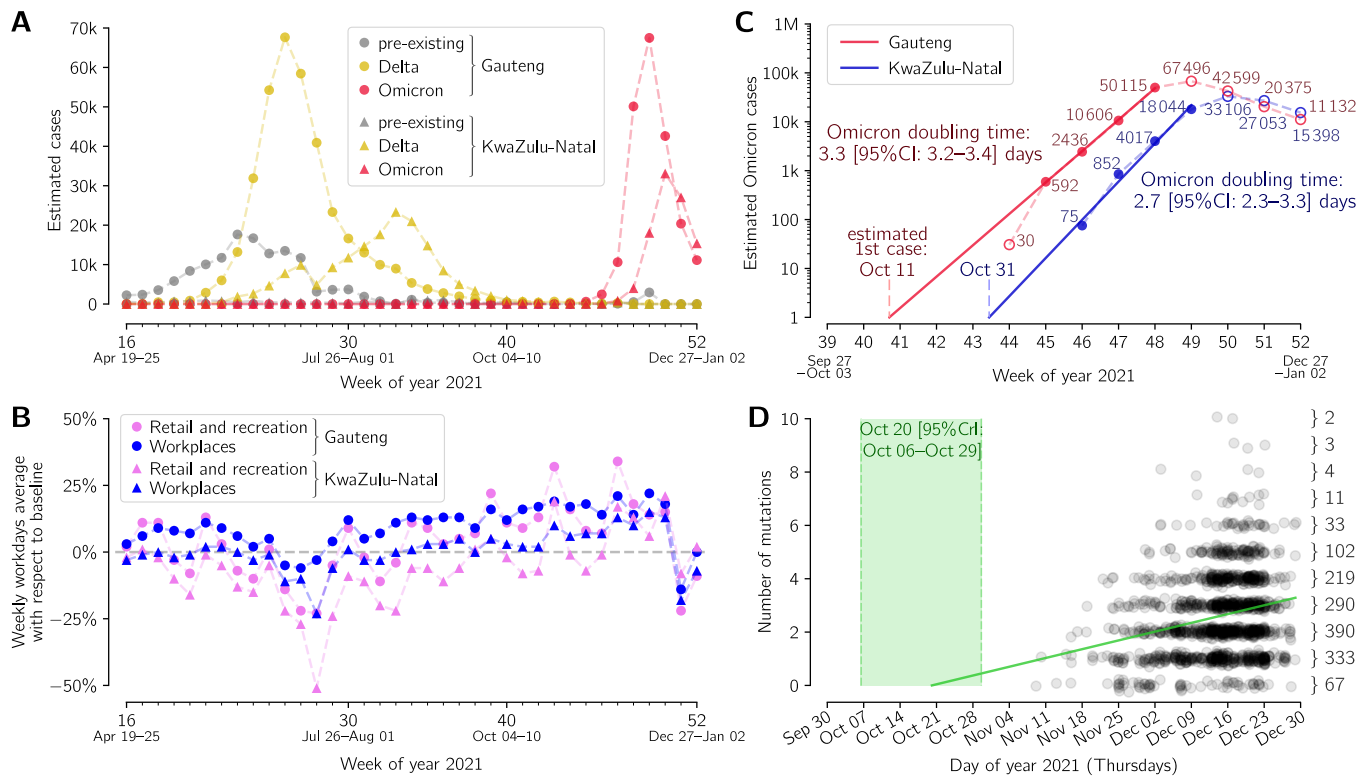
new strain. We use the reporting convention in which the weekly (multiplicative) growth rate of 2 implies doubling of the strain-to-strain ratio every week.

## Mathematical modeling

The mathematical model has been formulated as an extended susceptible–exposed–infectious–recovered (SEIR) model amended with a vaccinated (V) compartment. We assumed that the latent period is the same as the incubation period and is Erlang-distributed with the shape parameter  $m = 6$  (which in the model structure is reflected by inclusion of 6 exposed subcompartments) and the mean of  $1/\sigma = 3$  days. The average period of infectiousness is  $1/\gamma = 3$  days (such a short period reflects the assumption that the individuals with confirmed infection are quickly isolated and then cannot infect susceptible individuals). The recovered individuals become susceptible at the rate of  $\rho = 1/\text{year}$ . Susceptible individuals are vaccinated at the rate of  $v = 2/\text{year}$  and their vaccine-induced immunity wanes at the rate  $\rho$  (same as the rate of transition from a recovered to a susceptible compartment).

We consider two model variants, see Fig. 4A and Fig. 4B. In model A, there is a single pool of individuals susceptible to both Delta and Omicron, whereas in model B there are two additional compartments of individuals that are susceptible to either only Delta or only Omicron, that are fed with the post-Omicron recovered or the post-Delta recovered, respectively, at the rate of  $\pi = 1.5/\text{year}$ . From these two additional susceptible compartments there are transitions to the compartment of individuals susceptible to both Delta & Omicron (at the rate  $\rho$ ). In this way we account for only partial overlap in reciprocal post-infection protection. In model A, transmissibility of Omicron is 4-fold higher than that of Delta, whereas in model B the transmissibility of Omicron and Delta is the same but, due to the specific choice of transition parameters, the aggregated pool of individuals susceptible to Omicron is four-fold higher than to Delta in the steady state before the appearance of Omicron. Model B is symmetrical with respect to both strains, however, by including an additional transition from the vaccinated compartment to the compartment of individuals susceptible only to Omicron (at the rate  $\pi$ ), we account for faster waning of post-vaccination immunity to Omicron.

Model dynamics is governed by a system of ordinary differential equations (18 ODEs in model A, 20 ODEs in model B). The ODEs may be unambiguously derived, assuming mass-action kinetics, based on model schemes in Fig. 4A and Fig. 4B, and parametrized with kinetic rates given in Fig. 4C. On the first day shown in Fig. 4D–Fig. 4G, when the system is in equilibrium with Delta, just one individual (in a population of  $10^6$  individuals) is exposed to Omicron. As emphasized further in Results, the initial exponential phase of the Omicron outbreak is nearly identical within both models.



**Figure 1. Growth and divergence of the Omicron strain.** (A) Weekly aggregated cases of Omicron, Delta and other variants in two South Africa's provinces, Gauteng and KwaZulu-Natal. (B) Weekly averaged workday mobility in Gauteng (filled circles) and KwaZulu-Natal (filled triangles) in workplaces (blue) and retail & recreation centers (pink). (C) Exponential growth of the Omicron strain in weeks 45-48 in 2021 (November 8-December 5) in Gauteng and in weeks 46-49 in KwaZulu-Natal. (D) Accumulation of mutations by the Omicron strain worldwide based on the Nextstrain phylogenetic tree. The green line shows the mutation accumulation trend determined by the linear regression assuming Poisson distribution of the number of mutations in a given time. The 95% credible interval of time is marked in light green. The dataset for panels A and B is provided as Supplementary Table S1; the phylogenetic tree (with dates) is provided as Supplementary Table S2.

## Results

### Divergence and growth of Omicron strain in South Africa

The Delta VOC became the dominant variant in Gauteng and KwaZulu-Natal in June 2021, causing an epidemic wave that peaked at the beginning of July 2021 in Gauteng and the end of August 2021 in KwaZulu-Natal, Fig. 1A. The number of Omicron (or other variant) cases were estimated by multiplying the weekly number of total COVID-19 confirmed cases by the proportion of Omicron (or other variant) genomes among all collected genomes in a given week (see Supplementary Table S1). Between July and October 2021 in Gauteng and in September and October in KwaZulu-Natal, the weekly number of COVID-19 cases was decreasing despite no significant reduction of population mobility at workplaces and retail & recreation centers (Fig. 1B). The emergence of the Omicron variant has caused recent rapid epidemic outbreaks in both considered provinces (Fig. 1A). In Fig. 1C we show the exponential growth of the Omicron variant cases in weeks 45-48 in 2021 (November 8-December 5) in Gauteng and in weeks 46-49 in Kwazulu-Natal. This method, in contrast to analyzing only the proportion of new strain

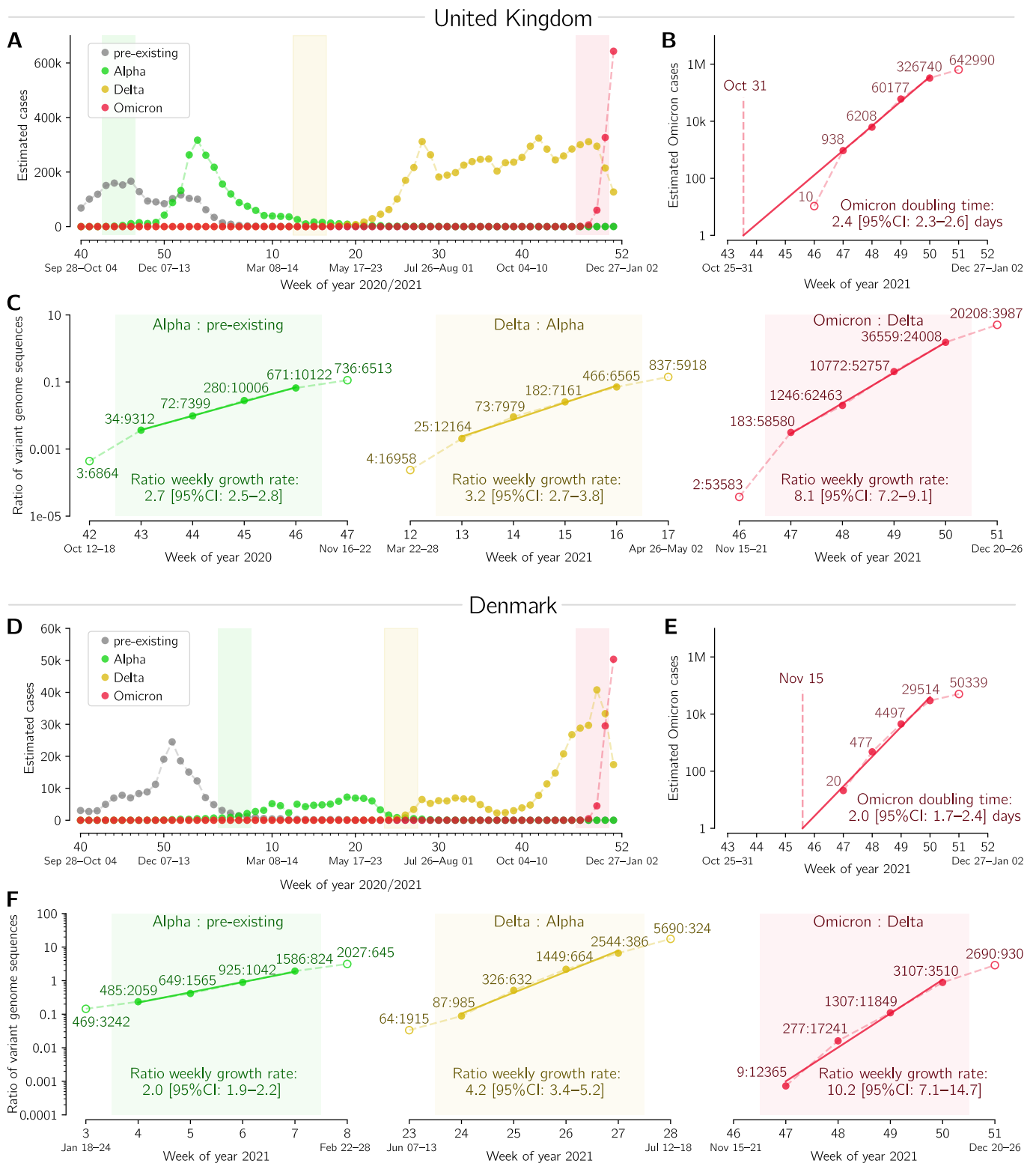
genomes [18], enabled us to follow Omicron growth after its fixation in weeks 47–48 in 2021. The Omicron doubling time, estimated based on the log–linear regression of the number of weekly cases in the four-week periods, is equal to 3.3 days [95% CI: 3.2–3.4 days] in Gauteng, and 2.7 days [95% CI: 2.7–3.3 days] in KwaZulu-Natal.

The log–linear regression suggests that the exponential growth of Omicron started in Gauteng around October 11, 2021, however the initial epidemic growth is highly stochastic and may be heavily disturbed by superspreaders in the cascade of infections [19]. The profile of mutation accumulation in Fig. 1D indicates that the Omicron strain started diverging between October 6 and October 29, 2021 (95% CrI), at the average mutation accumulation rate equal 0.33/week [95% CrI: 0.26–0.40 per week]. This is lower than the average (global) SARS-CoV-2 mutation accumulation rate equal approximately 0.45/week (based on the Nextstrain [3] estimate as of January 15, 2021 [20]). An assumption of a higher mutation rate would yield a later divergence date.

## Succession of SARS-CoV-2 Variants of Concern

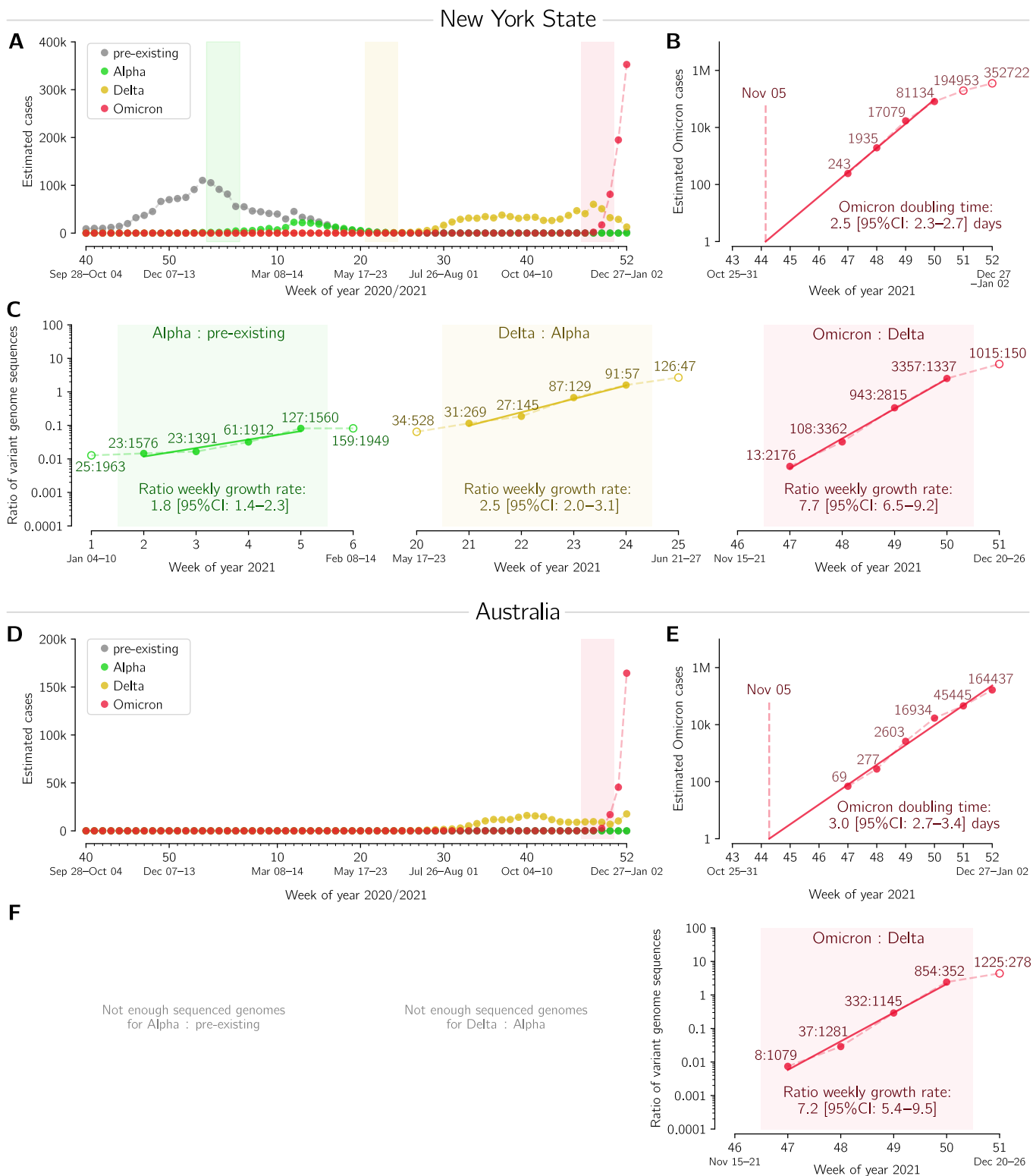
In Fig. 2 we analyze dynamics of Omicron-driven COVID-19 outbreaks in the UK and Denmark, and compare them with outbreaks caused therein by two previous VOCs, Alpha and Delta. In both these countries, the Alpha variant outcompeted pre-existing strains, approaching fixation, and then it was outcompeted by Delta variant, which also approached fixation; in December 2021, Omicron has become the dominant strain, Fig. 2A and Fig. 2D. We estimate the doubling time of Omicron to be 2.4 and 2.0 days in the UK and in Denmark, respectively, based on its nearly exponential growth in the 4-week period from November 22 to December 19, 2021, Fig. 2B and Fig. 2E. The short doubling time of Omicron is on par with its rapid gain of dominance over Delta VOC. In the considered 4-week period, the Omicron:Delta ratio increases exponentially with a weekly growth rate 8.1 in the UK and 10.2 in Denmark. This is faster than the earlier growth of the Delta:Alpha ratio estimated to be 3.2 in the UK and 4.2 in Denmark, and much faster than the growth of Alpha with respect to pre-existing strains, 2.7 in the UK and 2.0 in Denmark. All data used in Fig. 2 are provided in Supplementary Table S5.

In Fig. 3 we analogously analyze Omicron-driven outbreaks in New York State and Australia, and again compare them with outbreaks caused by two previous VOCs, Alpha and Delta. In New York State, the Alpha variant arrived during the end phase of the second wave, and consequently caused a noticeable but relatively modest rise in cases. It was then outcompeted by Delta, which, causing the third epidemic wave, quickly reached fixation. In Australia, due to stringent lockdowns and strict border rules, there were relatively few COVID-19 cases before the Delta variant. In both regions, Omicron has become the dominant variant in one month since its first detection, Fig. 2A and Fig. 2D. We estimate the doubling time of Omicron to be 2.5 and 3.0 days in New York State and Australia, respectively, Fig. 2B and Fig. 2E. In the considered 4-week period, the Omicron/Delta ratio was found to grow exponentially with a weekly rate 7.7 in New York State and 7.2 in Australia. This is significantly higher than the Delta/Alpha and Alpha/pre-existing strains growth rates in the New York State, estimated to be 2.5 and 1.8, respectively. All data used in Fig. 3 are provided in Supplementary Table S5.



**Figure 2. Succession of SARS-CoV-2 strains in the UK and in Denmark.** (A, D) Estimated number of weekly cases infected with a particular strain over the weeks of 2020 and 2021. (B, E) Estimated number of weekly Omicron cases and the doubling time estimate based on log-linear regression in four whole-weeks periods (filled circles). (C, F) Ratios of weekly cases of an emergent strain to the previously dominant strain, and the estimate of ratios' growth rates based on log-linear regression in four whole-weeks periods (subpanels correspond to shaded regions in respective panels A and D). A dataset for this figure is provided as Supplementary Table S5.





**Figure 3. Succession of SARS-CoV-2 strains in New York State and in Australia.** (A, D) Estimated number of weekly cases infected with a particular strain over the weeks of 2020 and 2021. (B, E) Estimated number of weekly Omicron cases and the doubling time estimate based on log-linear regression in four (panel B) and six (panel E) whole-weeks periods (filled circles). (C, F) Ratios of weekly cases of an emergent strain to the previously dominant strain, and the estimate of ratios' growth rates based on log-linear regression in four whole-weeks periods (subpanels correspond to shaded regions in respective panels A and D). A dataset for this figure is provided as Supplementary Table S5.

## Two-strain mathematical model

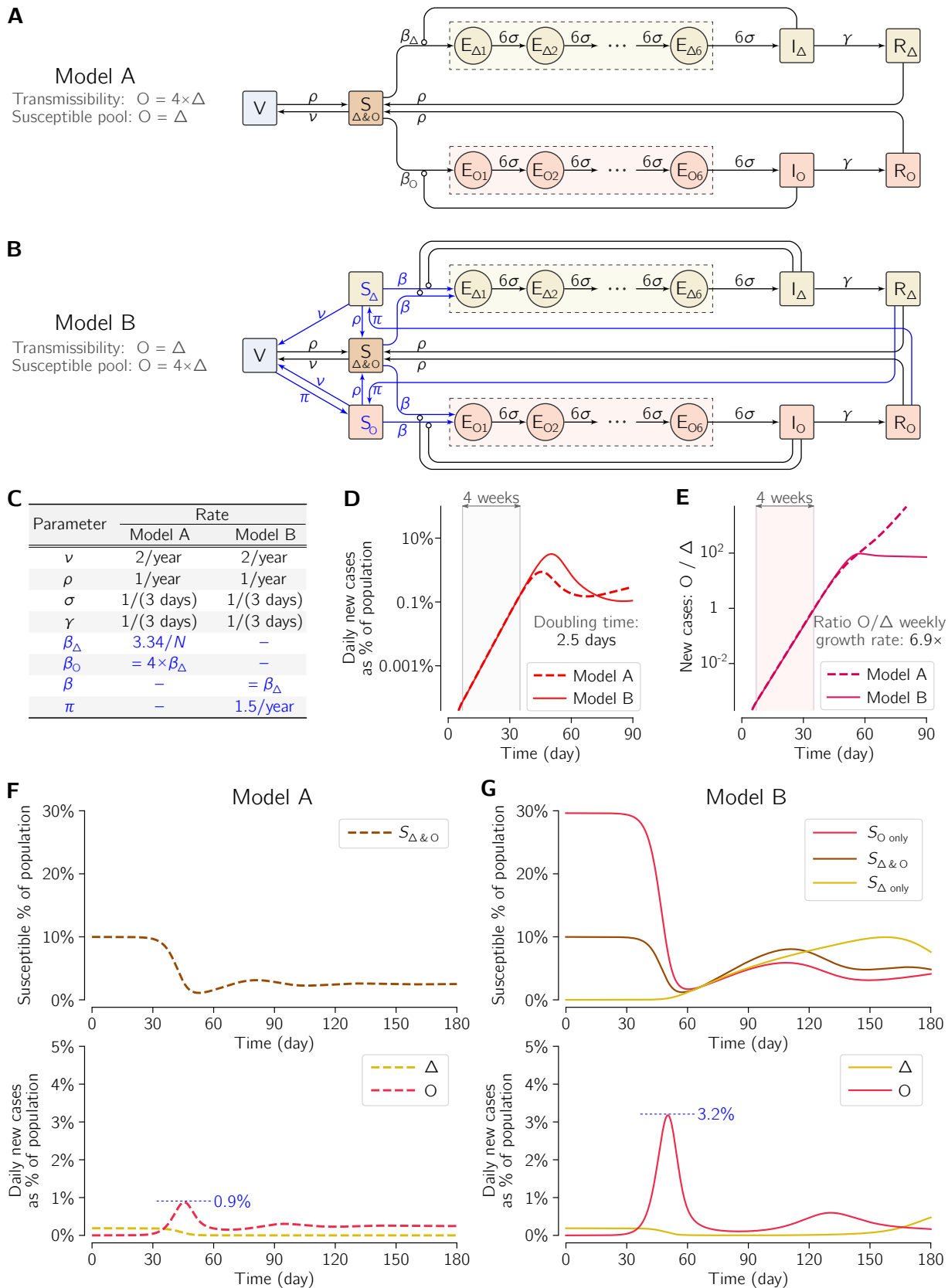
To corroborate whether the observed rapid surge of Omicron cases that displace Delta may be attributed to immune evasion, as widely suggested by the references cited in Introduction, we analyze two variants of a mathematical model of COVID-19 pandemic (Fig. 4). In model A (Fig. 4A), transmissibility of Omicron is four-fold higher than that of Delta and both strains share a common pool of susceptible individuals. In model B (Fig. 4B), transmissibility of Omicron and Delta is identical but, in the steady state before the appearance of Omicron, the aggregated pool of individuals susceptible to Omicron is four-fold higher than to Delta. The models were structured and parametrized (Fig. 4C) such that the doubling time of Omicron cases in both models is equal to 2.5 days (Fig. 4D), which lies roughly in the middle of the range of doubling times observed in six geographical locations considered previously. Also, the ratio of new Omicron to new Delta cases is accordant in both models and equal 6.9 days (Fig. 4E), only slightly lower than in the four locations, for which this ratio has been determined.

Despite having their initial exponential phases non-distinguishable, in later time points the two models exhibit divergent trajectories that differ markedly in terms of the peak of the number of daily new Omicron cases. According to the model with increased Omicron transmissibility (model A), the maximum number of new daily cases is below 1% of population (Fig. 4F). In the model with the increased pool of individuals susceptible to Omicron (model B), the initial exponential growth phase lasts longer, which contributes to delaying and, most importantly, elevating this maximum to above 3% of population (Fig. 4G).

## Discussion

We have demonstrated the exponential growth of the Omicron strain in the South Africa's provinces of Gauteng and KwaZulu-Natal in the four-week period starting respectively, November 8 and 15, 2021, with the doubling times equal 3.3 days [95% CI: 3.2–3.4 days] and 2.7 days [95% CI: 2.3–3.3 days]. Based on the mutation accumulation profile we found that the Omicron strain started diverging between October 6 and October 29, 2021, which agrees with the date suggested by the log-linear regression of the number of weekly cases in the first affected province of Gauteng, October 11, 2021. Of note, an unnoticed spread before October 2021 would imply that the strain growth rate is lower than that estimated based on the exponential growth rate in the analyzed four-week period in Gauteng. Before the Omicron outbreaks, the Delta variant was the dominant strain in Gauteng and KwaZulu-Natal, and in September and October the COVID-19 epidemic was receding without significant mobility reduction, suggesting that the population of these provinces might have reached a transient herd immunity to the Delta variant. The population-level immunity has been apparently overcome by the Omicron variant.

The potential of Omicron to create rapid outbreaks was confirmed by analyzing its spread in the UK, Denmark, New York State, and Australia. In these locations the doubling time of Omicron was in the range of 2.0–3.0 days. Additionally, based on relatively high number of sequenced genomes sampled in these locations, we estimated the weekly growth of the ratio of



**Figure 4. Two COVID-19 two-strain SEIR models with vaccination.** (A) Scheme of model A, in which transmissibility of Omicron (O) is four-fold higher than that of Delta ( $\Delta$ ) and both strains have a common pool of susceptible individuals (10% of simulated population in the pre-Omicron steady state). (B) Scheme of model B, in which transmissibility of Omicron (O) and Delta ( $\Delta$ ) is the same but the aggregated pool of individuals susceptible to Omicron is four-fold higher than to Delta (40% vs 10% of simulated population in the pre-Omicron steady state). Essential modifications with respect to model A are shown in blue. (C) Values of rate parameters of both models. Model variant-specific parameters are blue. (D) Initial dynamics of Omicron dynamics in both models shows similar growth and identical doubling time in the 4-week time window in the initial exponential phase of the epidemic outbreak, but not in later time points. (E) Ratio of Omicron to Delta new daily cases and its growth rate in both models. (F) Dynamics of the outbreak of Omicron infections in model A. (G) Dynamics of the outbreak of Omicron infections in model B. In panels F and G, dashed horizontal blue lines mark the maximum as % of simulated population.

Omicron to Delta to be in the range 7.2–10.2, considerably higher than the growth of the ratio of Delta to Alpha (estimated to be in the range 2.5–4.2), and Alpha to pre-existing strains (estimated to be in the range 1.8–2.7). These findings are in line with the observed ability of Omicron to infect vaccinated and recovered individuals, which endows it with a natural advantage over Delta [15]. Of note, the Alpha outbreak took place in winter 2020/2021, when the proportion of vaccinated individuals was very low. In turn, the reduction of vaccine effectiveness for Delta in reference to Alpha [11, 21], was substantially lower than in the case of Omicron in relation to Delta [15]. This suggests that, in contrast to Omicron, Alpha and Delta variants become transiently dominant mainly because of their higher infectivity and not due to significant immune evasion.

In six considered locations, the Omicron doubling time was found in the range of 2.0–3.3 days, which is comparable to the doubling times during the first COVID-19 pandemic outbreaks in spring 2020. For that time, doubling time was estimated to lie between 1.86 and 2.88 days for China, Italy, France, Germany, Spain, UK, Switzerland, and New York State [19]. Here, the weekly growth of the ratio of Omicron to Delta was found in the range 7.2–10.2, considerably higher than the previous ratios of Alpha and Delta at the times when they were gaining dominance. These findings strongly suggest that Omicron will outcompete Delta and become (transiently) the dominant strain.

Omicron accumulated more than 30 mutations in its spike protein, with 15 substitutions in the receptor binding domain (RBD, residues 319–541) alone [2]. Many of these RBD mutations are thought to decrease potency of neutralizing antibodies [22], which is in agreement with growing evidence that Omicron has several fold increased ability to infect both vaccinated and recovered individuals, as discussed in the Introduction.

Our mathematical model-based analysis of COVID-19 dynamics clearly demonstrates two points relevant to the initial phase of the outbreak. First, if only rough epidemiological data are analyzed, in the first weeks of the outbreak immune evasion may be indistinguishable from increased transmissibility. Second, being able to distinguish between the two scenarios based on tangential evidence supporting immune evasion is of crucial importance for predicting the impact of a new strain on longer term epidemic dynamics. Immune evasion is more concerning than increased transmissibility, because dodging protection provided by vaccination or infection with prior variant(s) renders a significant share of the population susceptible to an emerging variant, promoting larger outbreaks. These outbreaks may be hard to curb by lockdowns due to increasing lockdown fatigue, but in the case of Omicron plausibly will not result in proportionally high death toll, as suggested by early estimates of Omicron-associated mortality [5, 22].

**Supplementary Materials:** The following are available online: Supplementary Table S1: Data used for Fig. 1A and 1C; Supplementary Table S2: containing phylogenetic tree with dates; Supplementary Table S3: list of GISAID IDs and acknowledgments for genomes collected in Gauteng since April 19, 2021 till January 2, 2022; Supplementary Table S4: list of GISAID IDs and acknowledgments for genomes collected in KwaZulu-Natal since April 19, 2021 till January 2, 2022; Supplementary Table S5: Data used for Figs. 2 and 3.

**Author Contributions:** Conceptualization, Frederic Grabowski, Marek Kočańczyk and Tomasz Lipniacki; data curation, Frederic Grabowski; software, Frederic Grabowski; investigation, Frederic Grabowski and Marek Kočańczyk; supervision, Marek Kočańczyk and Tomasz Lipniacki; visualization, Frederic Grabowski and Marek Kočańczyk; writing—original draft preparation, Tomasz Lipniacki; writing—review and editing, Marek Kočańczyk.

**Funding:** This study was supported by the National Science Centre Poland OPUS, grant 2018/29/B/NZ2/00668 and by the Norwegian Financial Mechanism GRIEG-1 grant 2019/34/H/NZ6/00699 (operated by the National Science Centre Poland). The funding agency had no role in study design, data collection, and analysis, decision to publish, or preparation of the manuscript.

**Data Availability Statement:** We analyzed publicly available genome datasets retrieved from GISAID (<https://www.gisaid.org>) and Community Mobility Reports available from Google (<https://www.google.com/covid19/mobility/>). Cases data for Gauteng and KwaZulu-Natal can be found in daily reports from the National Institute for Communicable Diseases (<https://www.nicd.ac.za>) as aggregated by the University of Pretoria (<https://github.com/dsfsi/covid19za>). Cases for all other regions can be found in data aggregated by Johns Hopkins University (<https://github.com/CSSEGISandData/COVID-19>). Mutation counts for Omicron sequences can be found on Nextstrain (<https://nextstrain.org/groups/neherlab/ncov/21K-diversity>).

**Acknowledgments:** We are very grateful to the GISAID Initiative and all its data contributors, i.e., the Authors from the originating laboratories responsible for obtaining the specimens and the submitting laboratories where genetic sequence data were generated and shared via the GISAID Initiative, on which this research is based.

**Conflicts of Interest:** The authors have no competing interests.

## References

- [1] Shu, Y.; McCauley, J. GISAID: Global initiative on sharing all influenza data -- from vision to reality. *Eurosurveillance* **2017**, *22*.
- [2] Implications of the further emergence and spread of the SARS-CoV-2 B.1.1.529 variant of concern (Omicron) for the EU/EEA --- first update.  
Available online: <https://www.ecdc.europa.eu/en/publications-data/covid-19-threat-assessment-spread-omicron-first-update>.  
Last updated on 2 Dec, 2021.
- [3] Hadfield, J.; Megill, C.; Bell, S.M.; Huddleston, J.; Potter, B.; Callender, C.; Sagulenko, P.; Bedford, T.; Neher, R.A. Nextstrain: real-time tracking of pathogen evolution. *Bioinformatics* **2018**, *24*, 4121–4123.
- [4] Kupferschmidt, K. Where did 'weird' Omicron come from? *Science* **2021**, *374*, 1179–1179.
- [5] Madhi, S.A. South African Population Immunity and Severe Covid-19 with Omicron Variant. *medRxiv* **2021**, 10.1101/2021.12.20.21268096.

- [6] Ritchie, H.; Mathieu, E.; Rodés-Guirao, L.; Appel, C.; Giattino, C.; Ortiz-Ospina, E.; Hasell, J.; Macdonald, B.; Beltekian, D.; Roser, M. Coronavirus Pandemic (COVID-19). **2020**. Available online: <https://ourworldindata.org/coronavirus> (accessed on 15 Jan, 2022)
- [7] Greaney, A.J.; Loes, A.N.; Crawford, K.H.D.; Starr, T.N.; Malone K.D.; Chu, H.Y.; Bloom, J.D. Comprehensive mapping of mutations in the SARS-CoV-2 receptor-binding domain that affect recognition by polyclonal human plasma antibodies. *Cell Host & Microbe*, **2022**, 29, 463-476.e6.
- [8] Liu, L. *et al.* Striking Antibody Evasion Manifested by the Omicron Variant of SARS-CoV-2. *Nature* **2021**. Accelerated article preview: <https://doi.org/10.1038/s41586-021-04388-0>
- [9] Planas, D. *et al.* Considerable escape of SARS-CoV-2 variant Omicron to antibody neutralization. *bioRxiv* **2021**, 10.1101/2021.12.14.472630.
- [10] Doria-Rose, N.A. *et al.* Booster of mRNA-1273 Strengthens SARS-CoV-2 Omicron Neutralization. *medRxiv* **2021**, 10.1101/2021.12.15.21267805.
- [11] Cromer, D. *et al.* Neutralising antibody titres as predictors of protection against SARS-CoV-2 variants and the impact of boosting: a meta-analysis. *The Lancet Microbe* **2021**, 3, e52- e61.
- [12] Garcia-Beltran, W.F. *et al.* mRNA-based COVID-19 vaccine boosters induce neutralizing immunity against SARS-CoV-2 Omicron variant. *Cell* **2022**, 10.1016/j.cell.2021.12.033.
- [13] Andrews, N. *et al.* Effectiveness of COVID-19 vaccines against the Omicron (B.1.1.529) variant of concern. *medRxiv* **2021**, 10.1101/2021.12.14.21267615.
- [14] SARS-CoV-2 variants of concern and variants under investigation in England Technical briefing 33. Available online: [https://assets.publishing.service.gov.uk/government/uploads/system/uploads/attachment\\_data/file/1043807/technical-briefing-33.pdf](https://assets.publishing.service.gov.uk/government/uploads/system/uploads/attachment_data/file/1043807/technical-briefing-33.pdf) (accessed on 15 Jan, 2022)
- [15] Report 49: Growth, population distribution and immune escape of Omicron in England. Available online: [https://assets.publishing.service.gov.uk/government/uploads/system/uploads/attachment\\_data/file/1041911/S1449\\_COVID19\\_Report\\_49.pdf](https://assets.publishing.service.gov.uk/government/uploads/system/uploads/attachment_data/file/1041911/S1449_COVID19_Report_49.pdf) (accessed on 15 Jan, 2022)
- [16] Marivate, V.; Combring, H.M. Use of Available Data To Inform The COVID-19 Outbreak in South Africa: A Case Study. *Data Science Journal* **2020**, 19, 1-7.
- [17] Dong, E. *et al.* An interactive web-based dashboard to track COVID-19 in real time. *The Lancet Infectious Diseases* **2020**, 20, 10.1016/S1473-3099(20)30120-1.
- [18] Grabowski, F.; Preibisch, G.; Giziński, S.; Kochańczyk M.; and Lipniacki, T. SARS-CoV-2 Variant of Concern 202012/01 Has about Twofold Replicative Advantage and Acquires Concerning Mutations. *Viruses* **2021**, 13.

- [19] Kočańczyk, M.; Grabowski, F.; Lipniacki, T. Super-spreading events initiated the exponential growth phase of COVID-19 with  $R_0$  higher than initially estimated. *Royal Society Open Science* **2020**, 7, 200786.
- [20] Nextstrain clock. Available online: <https://nextstrain.org/ncov/gisaid/global?l=clock> (accessed on Jan 15, 2021).
- [21] Bernal, J.L. *et al.* Effectiveness of Covid-19 Vaccines against the B.1.617.2 (Delta) Variant. *New England Journal of Medicine* **2021**, 385, 585-594.
- [22] Callaway, E.; Ledford, H. How bad is Omicron? What scientists know so far. *Nature* **2021**, 600, 197–199.
- [23] Lewnard, J.A. *et al.* Clinical outcomes among patients infected with Omicron (B.1.1.529) SARS-CoV-2 variant in southern California. *MedRxiv* **2022**, 10.1101/2022.01.11.22269045.