

Figure S1

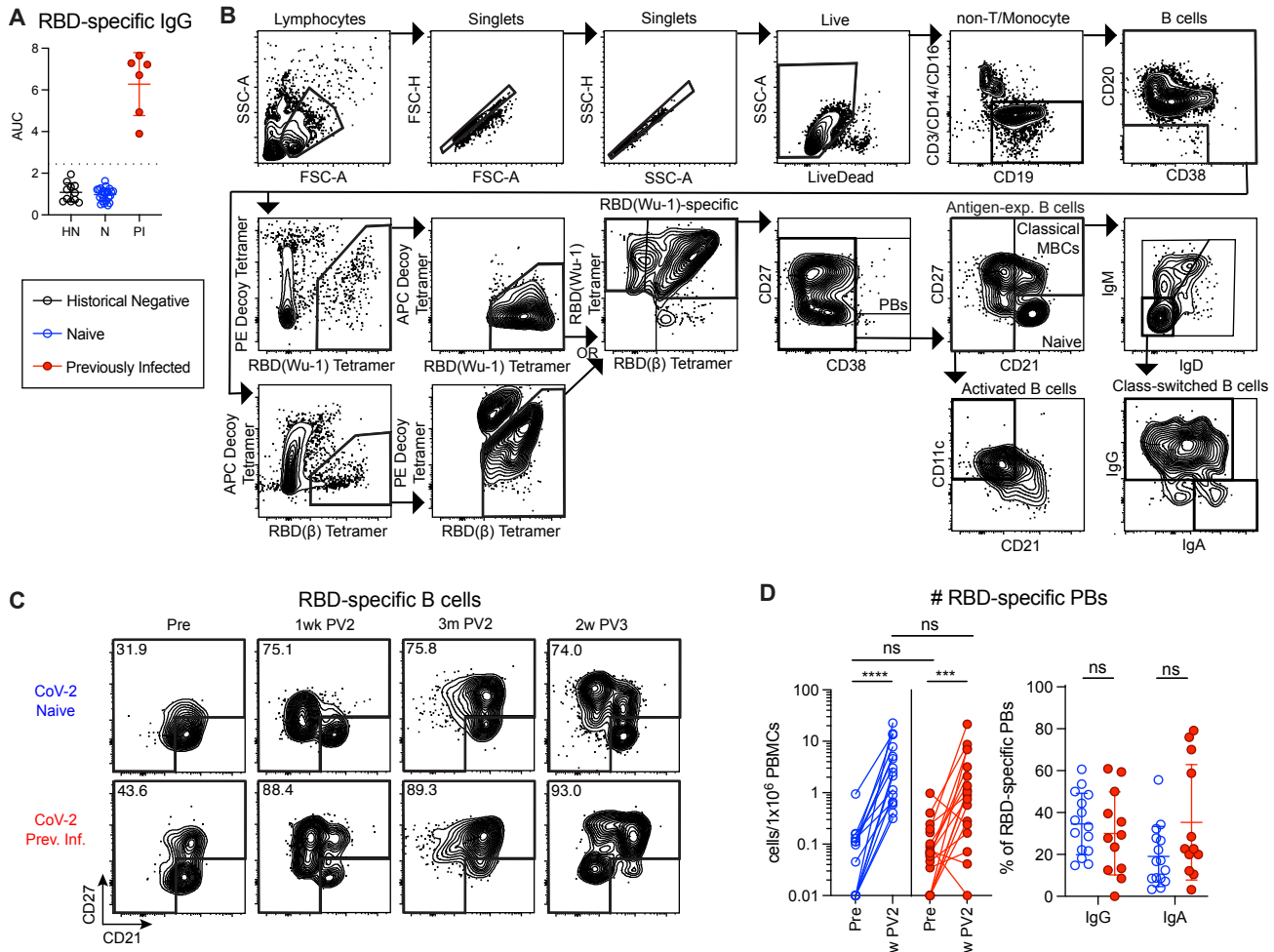
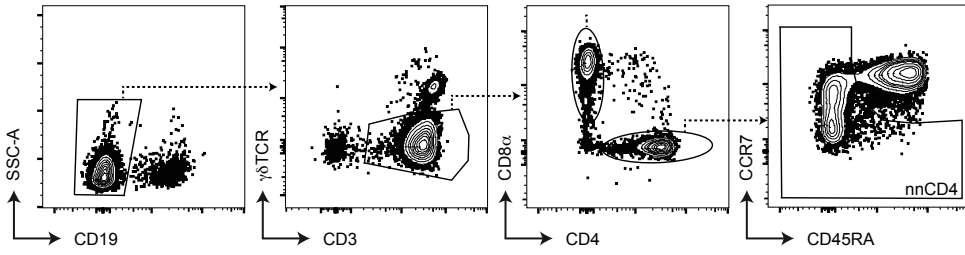
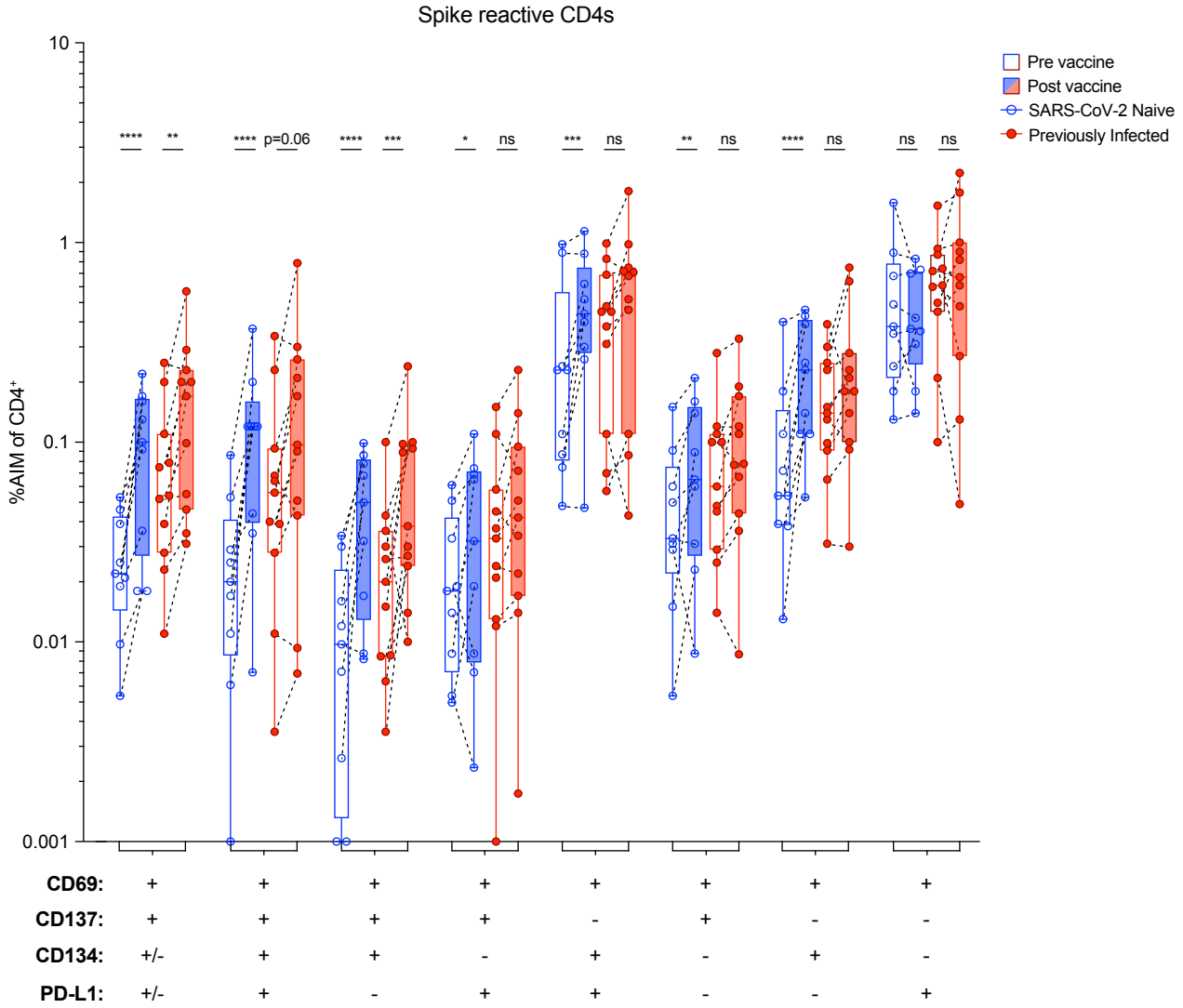


Figure S2

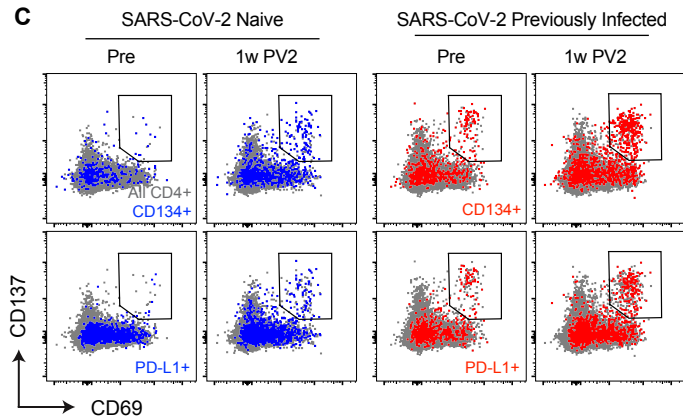
A



B



C



D

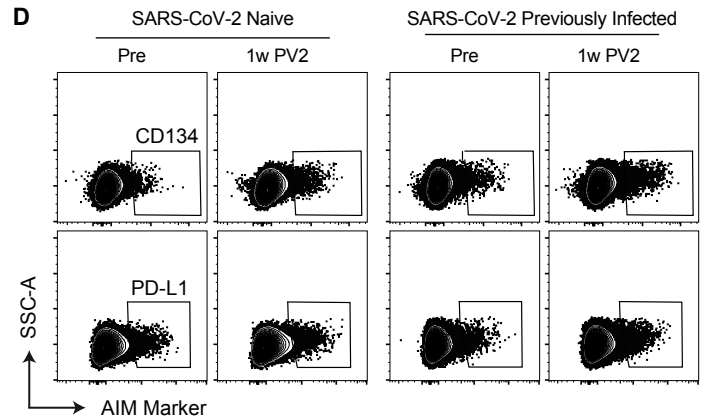


Figure S3

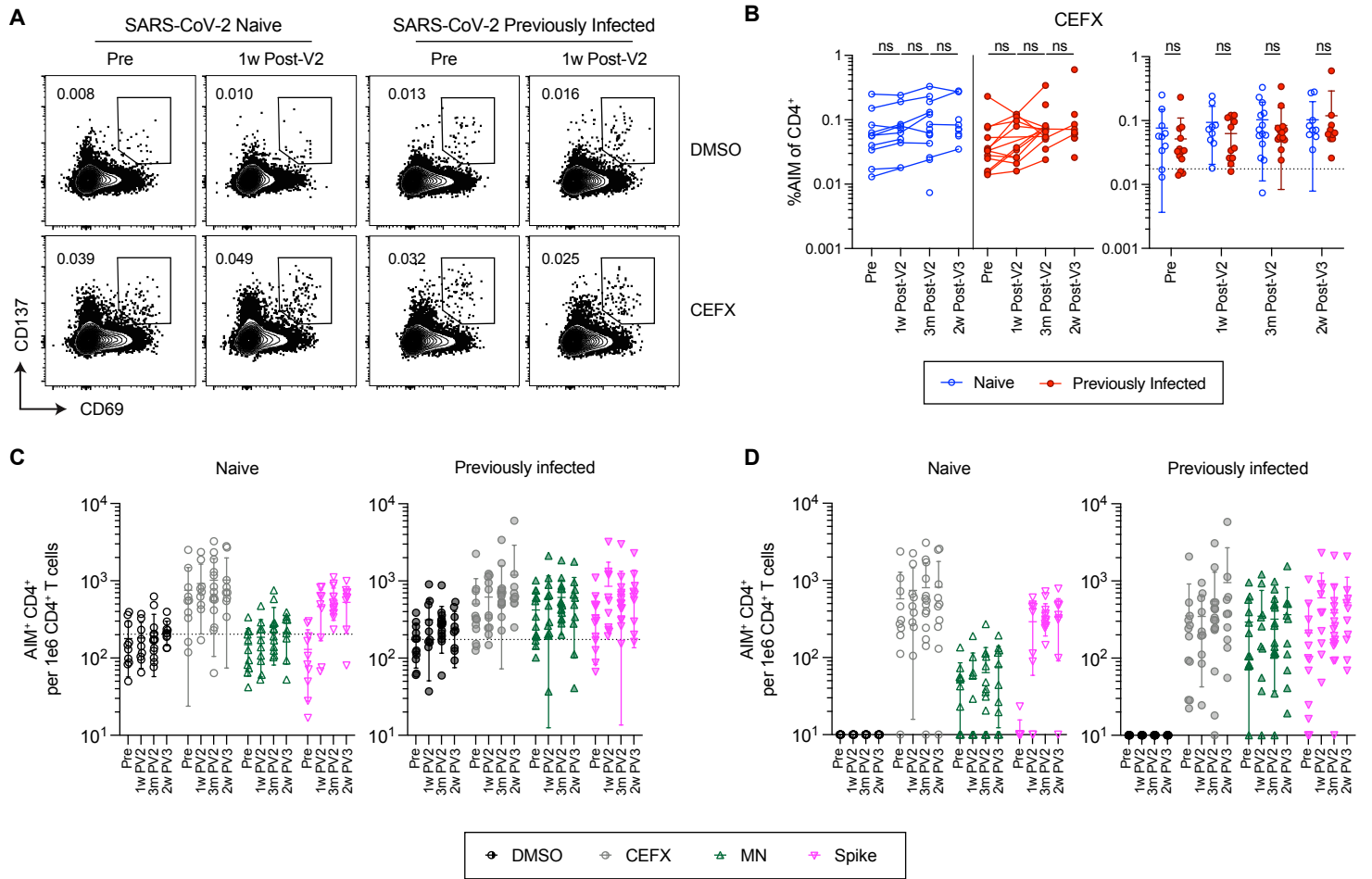


Figure S4

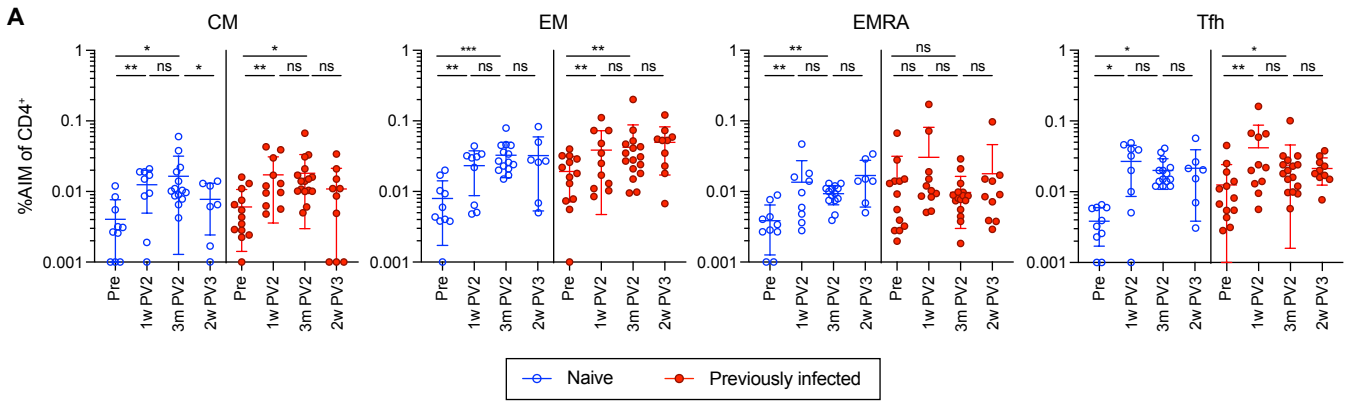


Figure S5

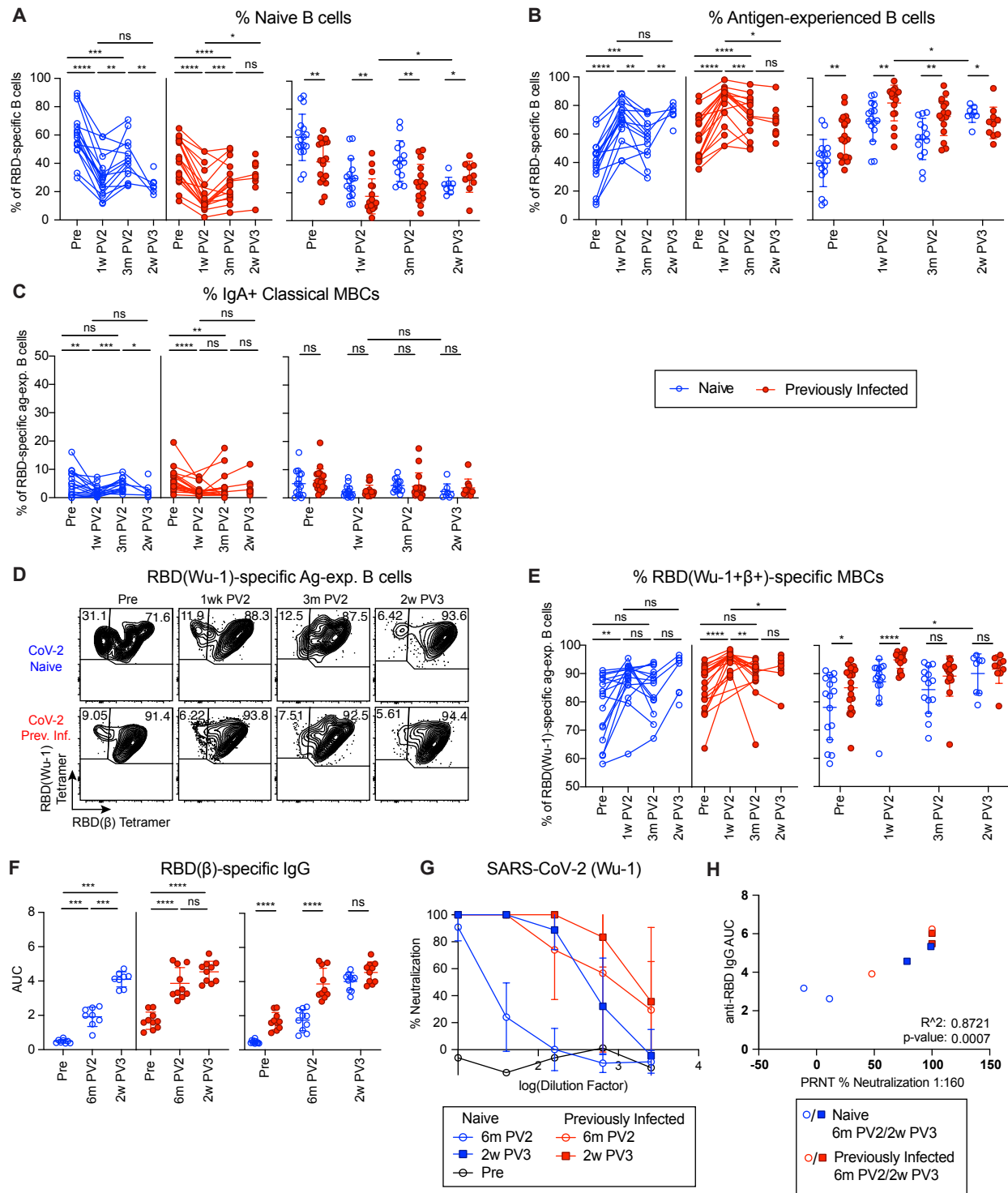


Figure S6

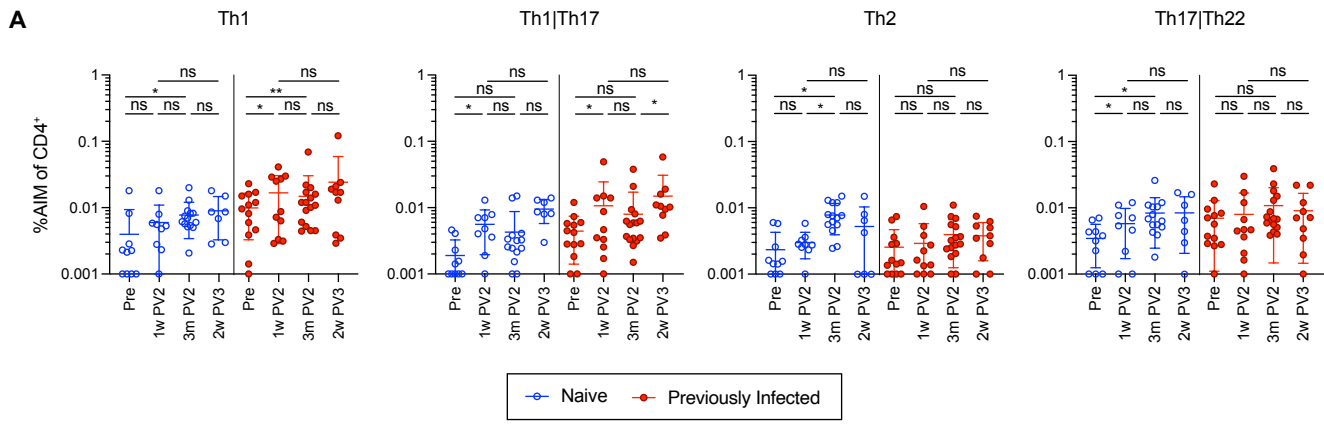


Figure S7

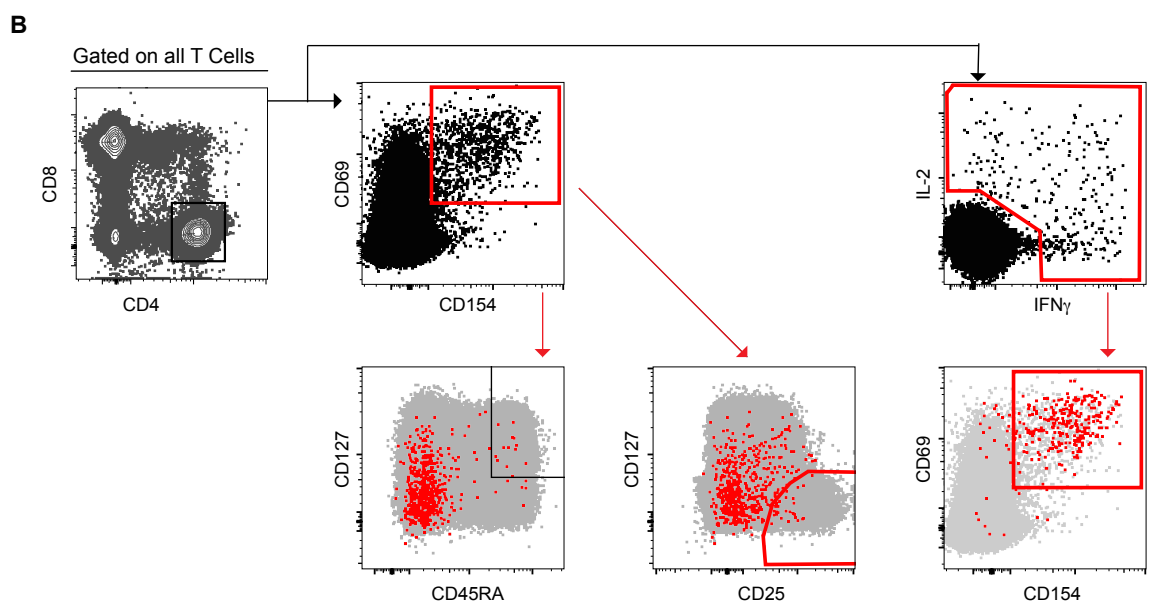
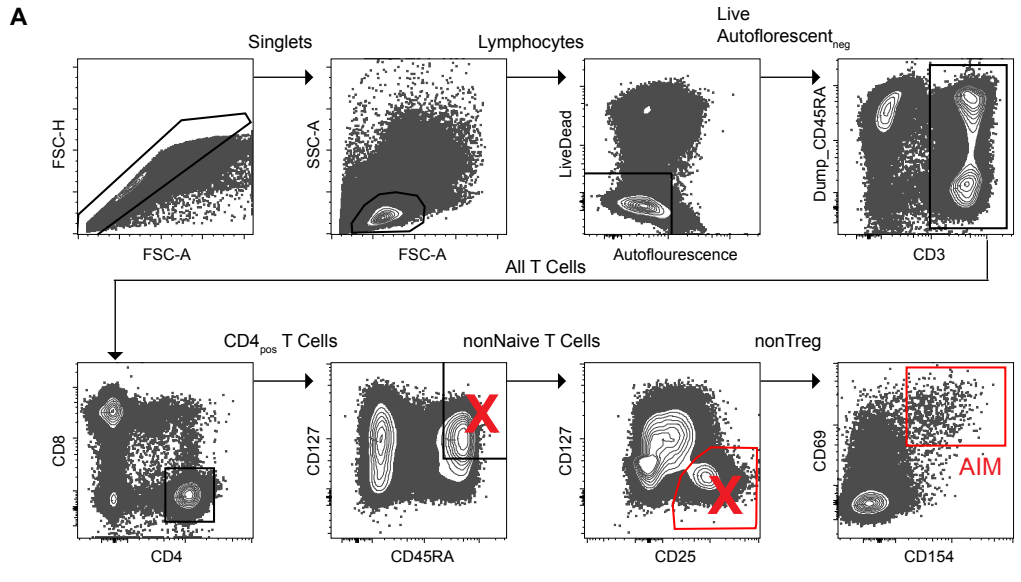


Figure S8

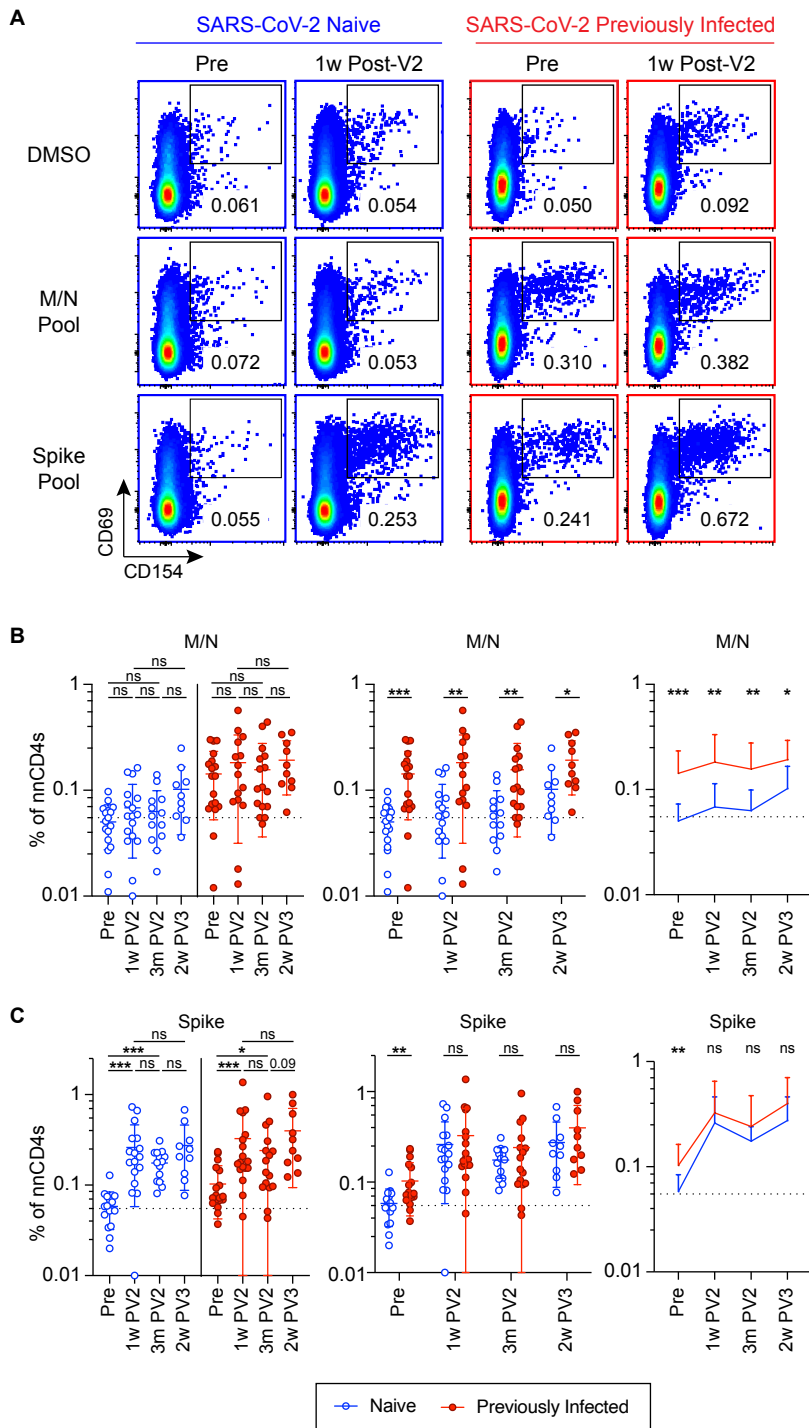


Figure S9

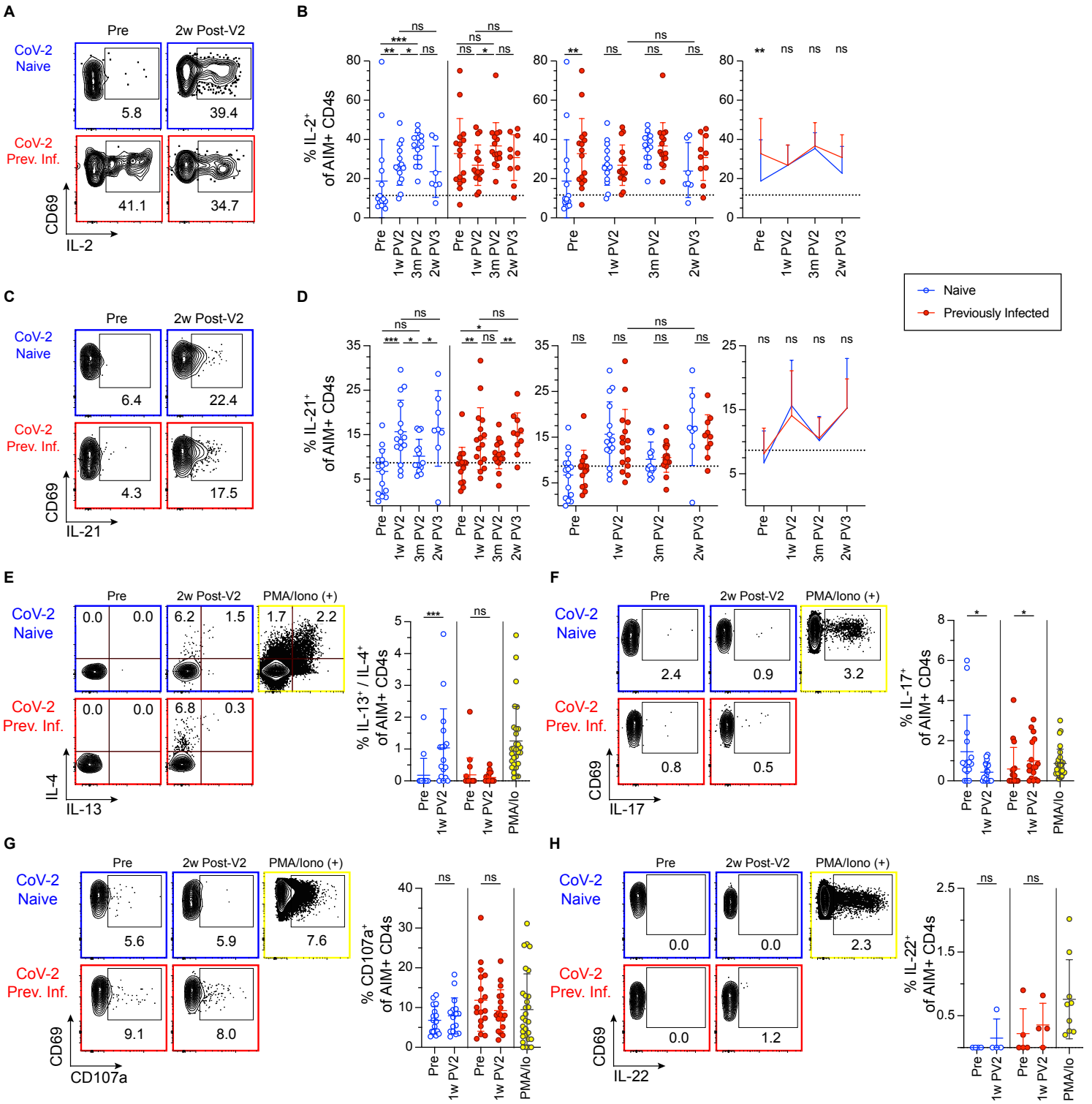


Figure S10

MN-Responsive CD4 T Cells

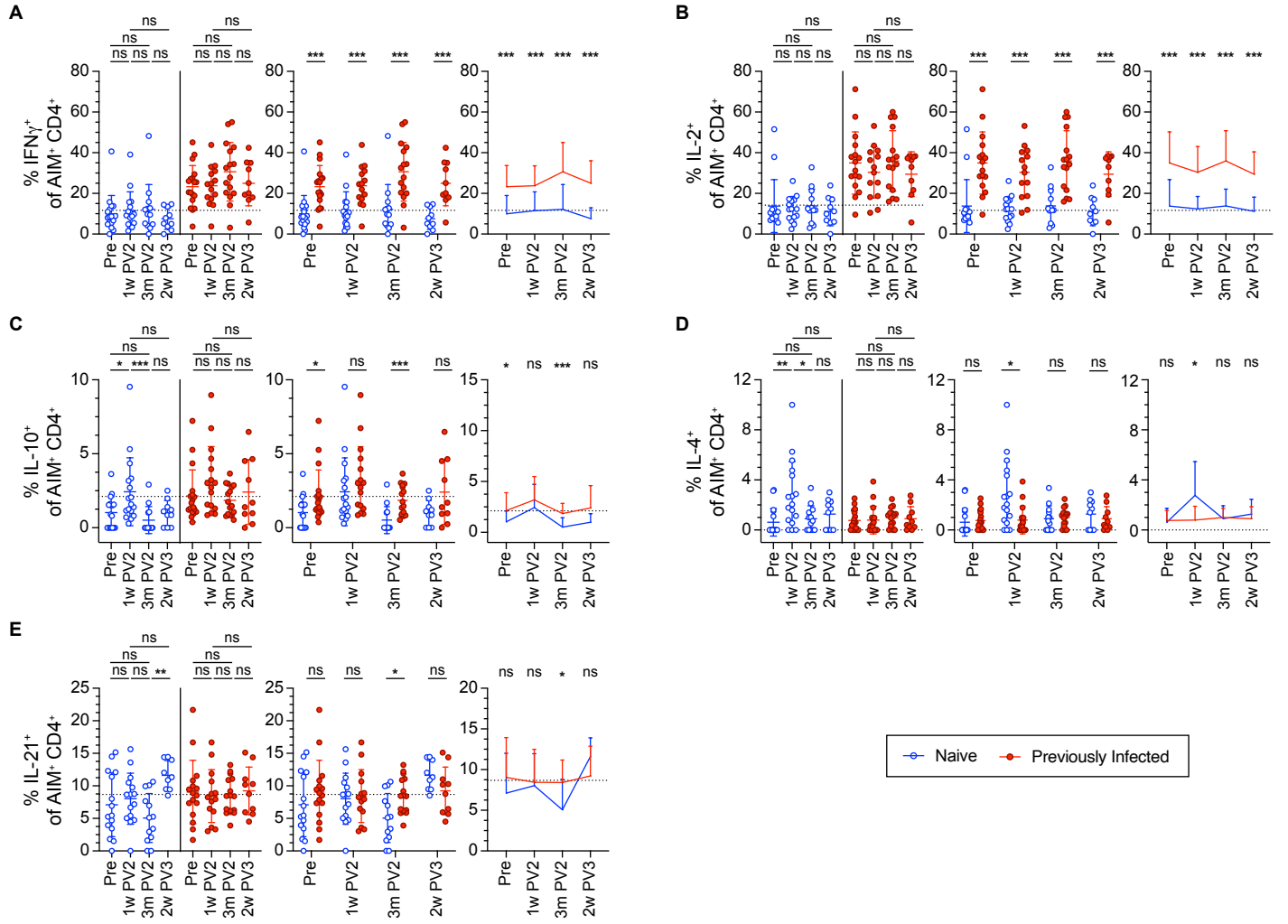
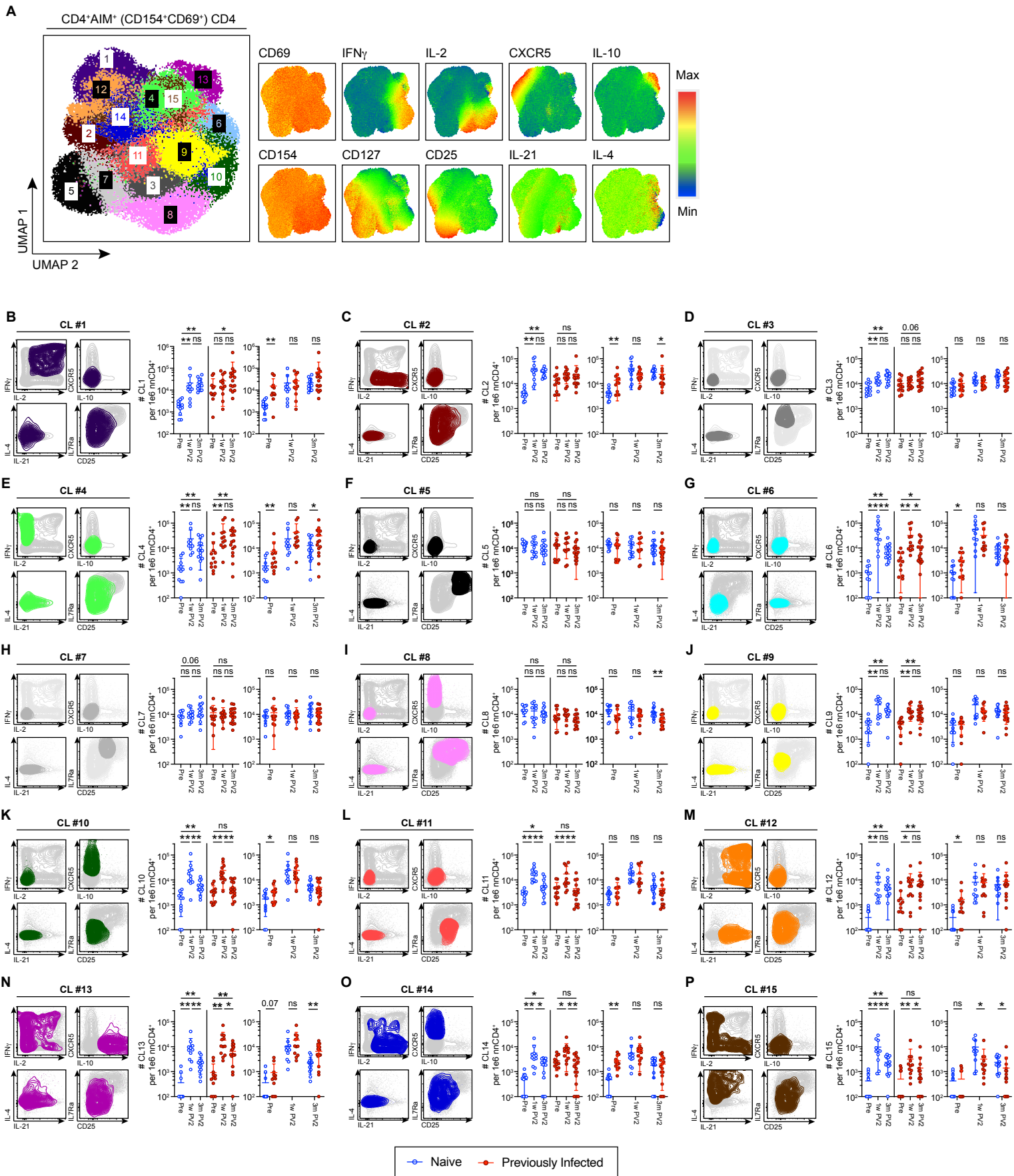


Figure S11



Supplementary Table 1: Study cohort characteristics

	SARS-CoV-2 Naïve	SARS-CoV-2 Previously Infected
Number of participants	22	30
Age (years)	46 (25 – 79)	50 (22 – 77)
Sex	64% Female, 36% Male	77% Female, 23% Male
Sustained symptoms (PASC) ¹	NA	10
Symptom onset to pre-vaccination draw (days)	NA	265 (59 – 374)
Symptom onset to vaccine dose 1 (days)	NA	305 (85 – 423)
Vaccine type ²	8 Moderna, 14 Pfizer	10 Moderna, 20 Pfizer
Vaccine dose 2 to 1 week PV2 draw (days)	9 (5 – 12)	10 (5 – 20)
Vaccine dose 2 to 3 month PV2 draw (days)	93 (75 – 119)	91 (63 – 132)
Vaccine dose 2 to 6 month PV2 draw (days)	161 (148 – 179)	160 (133 – 190)
Vaccine dose 2 to vaccine dose 3	232 (182 – 274)	233 (197 – 261)
Vaccine dose 3 to 2 week PV3 draw (days)	19 (13 – 47)	15 (10 – 22)

¹ Participants surveyed at 6 months post-symptom onset for ongoing symptoms or post-acute sequelae of COVID-19 (PASC).

² mRNA-1273 (Moderna) or BNT162b2 (Pfizer-BioNTech)

Supplementary Table 2 - T cell peptide pools

All Peptides from BEI product numbers NR-52402 (Spike), NR-52403 (Membrane), and NR-52404 (Nucleocapsid)

Spike Peptide Pool

BEI Peptide number	Amino Acids	Sequence	HLA Class II epitope(s)	HLA Class I epitope(s)	AA sequence changes in variants
S-4	22-34	TQLPPAYTNSFTRGVYY		YTNSFTRGVY, LPPAYTNSF	
S-5	29-45	TNSFTRGVYYPDKVFRS		GVYYPDKVFR	
S-6	36-52	VYYPDKVFRSSVLHSTQ		KVFRSSVLH	
S-12	78-94	RFDNPVLPFNDGVYFAS		LPFNDGVYF	
S-16	106-122	FGTTLDSKTQSLLVN		TLDSKTQSL	
S-19	127-143	VIKVCFQFCNDPFLGV	CEFQFCNDPFLGVY		Odel142-144, OY145D
S-20	134-150	QFCNDPFLGVYHKNK	CEFQFCNDPFLGVY	GVYHKNK	ΔG142D
S-23	155-171	SEFRVYSSANNCTFEYV	SSANNCTFEYVSQPF		ΔE156-, ΔF157-, ΔR158G
S-24	162-178	SANNCTFEYVSQPFMD	SSANNCTFEYVSQPF, CTFEYVSQPFMDLE		
S-25	169-185	EYVSQPFMDLEKQGN	CTFEYVSQPFMDLE		
S-26	176-192	LMDLEGKQGNFKNLREF	LMDLEGKQGNFKNLR		
S-28	190-206	REFVFNIDGYFKIYSK	NIDGYFKIYSKHTPI		
S-29	197-213	IDGYFKIYSKHTPINLV	NIDGYFKIYSKHTPI		Odel211, OL212I
S-30	204-220	YSKHTPINLVRDLPQGF		TPINLVRDL	Odel211, OL212I, Oins214EPE
S-31	211-227	NLVRDLPQGFSALEPLV	NLVRDLPQGFSALEP	LPQGFSAL	ΔA222V, Odel211, OL212I, Oins214EPE
S-33	225-241	PLVDLPIGINITRFQTL		LPIGINITRF	
S-39	267-283	VGYLQPRTFLLKYNENG		YLQPRTFLL	
S-42	288-304	AVDCALDPLSETKCTLK		ALDPLSETK	
S-46	316-332	SNFRVQPTESIVRFPNI		QPTESIVRF	
S-50	334-360	ATRFASVYAWNRKRISN	RFASVYAWNRKRISN	SVYAWNRKR	OG339D
S-54	372-388	ASFSTFKCYGVSPTKLN		KCYGVSPTK	OS373P, OS375F
S-65	449-465	YNYLYRLFRKSNLKPFE		RLFRKSNLK	ΔL452R
S-66	456-472	FRKSNLKPFERDISTEI		KPFERDISTEI	
S-73	505-521	YQPYRVVLSFELLHAP		QPYRVVVL, QPYRVVLSF	OY505H
S-84	582-598	LEILDITPCSFGGVSVI		TPCSFGGVSV	ΔD614G
S-88	610-626	VLYQDVNCTEVPVAIHA		YQDVNCTEV	OD614G
S-99	687-703	VASQSIAYTMSLGAEN		SIIAYTMSL	
S-102	708-724	SNNSIAIPTNFTISVTT		IPTNFTISV	
S-104	722-739	VTTEILPVSMTKTSVDC		EILPVSMTK	
S-108	750-766	SNLLQYGSFCTQLNRA	NLLQYGSFCTQLNR		ON764K
S-115	799-815	GFNFSQILPDPSKPSKR	NFSQILPDPSKPSKR		
S-119	827-843	TLADAGFIKQYGDCLGD	AGFIKQYGDCLGDIA	TLADAGFIK	
S-120	834-850	IKQYGDCLGDIAARDLI	AGFIKQYGDCLGDIA		
S-123	855-871	FNGLTVLPPLLTDEMA		GLTVLPPLL	ON856K
S-143	995-1011	RLITGRLQSLQTYVTQQ		RLQSLQTYV	
S-146	1016-1032	AEIRASANLAATKMSEC		RASANLAATK	
S-150	1044-1060	GKGYHLMSPQSAAPHGV		HLMSFPQSA, FPQSAAPHGV	
S-152	1058-1074	HGVVFLHVTVYVPAQEK		VVFLHVTVY	
S-153	1065-1081	VTYVPAQEKNFHTTAPAI		VTYVPAQEK	
S-163	1135-1151	NTVYDPLQPELDSFKEE		TVYDPLQPELDSFK	
S-180	1254-1270	CKFDEDDSEPVLGKVKL		EPVLGKVKL	

Membrane/Nucleocapsid Peptide Pool

BEI Peptide number	Amino Acids	Sequence	HLA Class II epitope(s)	HLA Class I epitope(s)	AA sequence changes in variants
M-3	15-31	KLLEQWNLVIGFLFTW		KLLEQWNLV	OQ19E
M-6	36-52	QFAYANRNRFYIIKLI	QFAYANRNRFYIIK	YANRNRFY	
M-9	57-73	LWPVTLACFVLAAYYRI		FVLAAYYRI	
M-10	64-80	CFVLAAYRINWITGGI	VLAAYRINWITGGI		
M-11	71-87	YRINWITGGIAIAMA	YRINWITGGIAIAMA		ΔI82T
M-13	85-101	ACLVGLMWLSYFIASF	CLVGLMWLSYFIASF, MWLSYFIASFRLFAR		
M-14	92-108	WLSYFIASFRLFARTRS	MWLSYFIASFRLFAR		
M-16	106-122	TRSMWSFNPETNILLNV		SMWSFNPET	
M-17	113-129	NPETNILLNVPLHGTIL	TNILLNVPLHGTILT	VPLHGTIL	
M-18	120-136	LNVPLHGTILTRP LLES	TNILLNVPLHGTILT		
M-19	127-143	TILTRP LLESELVIGAV		RPLLESEL	
M-20	134-150	LESELVIGAVILRGHLR	SELVIGAVILRGHLR		
M-21	141-157	GAVILRGHLRIAGHHLG	RGHLRIAGHHLGRCD		
M-22	148-164	HLRIAGHHLGRCDIKDL	RGHLRIAGHHLGRCD, IAGHHLGRCDIKDLP	RIAGHHLGR	
M-23	155-171	HLGRCDIKDLPKEITVA	GHHLGRCDIKDLP, LGRCDIKDLPKEITV, IKDLPKEITVATSRT		
M-24	162-178	KDLPKEITVATSRTLSY	IKDLPKEITVATSRT, KEITVATSRTLSYYK	LPKEITVAT	
M-25	169-185	TVATSRTLSYYKLGASQ	KEITVATSRTLSYYK		
M-26	176-192	LSYYKLGASQRVAGDSG	LSYYKLGASQRVAGD		
M-27	183-199	ASQRVAGDSGFAAYSRY		AGDSGFAAY, RVAGDSGFAAY	
M-28	190-206	DSGFAAYSRYRIGNYK	SGFAAYSRYRIGNYK		
N-1	Start-17	MSDNGPQNQRNAPRITF		GPQNQRNAPRITF	OP13L
N-6	36-52	RSKQRRPQGLPNNTASW		RPQGLPNNTA	
N-7	43-59	QGLPNNTASWFTALTQH		LPNNTASWF	
N-8	50-66	ASWFTALTQHGKEDLKF	SWFTALTQHGKEDLK		ΔD63G
N-10	64-80	LKFPRGQGVPIINTNSSP		FPRGQGVPI	
N-11	71-87	GVPINTNSSPDDQIGYY		NTNSSPDDQIGYY	
N-12	78-94	SSPDDQIGYYRRATRRIR	DDQIGYYRRATRRIR		
N-13	85-101	GYRRATRRIRGGDGKM	DDQIGYYRRATRRIR, YRRATRRIRGGDGK		
N-15	99-115	GKMKDLSPRWYFYLLGT		SPRWYFYLL	
N-18	120-136	GLPYGANKDGIWVATE	NKDGIIWVATEGALN		
N-19	127-143	KDGIWVATEGALNTPK	NKDGIIWVATEGALN		
N-22	148-164	TRNPANNAIVLQLPQG		NPANNAIVL	
N-31	211-227	AGNGGDAALALLLDRL	AGNGGDAALALLLD, DAALALLLDRLNQL		
N-32	218-234	ALALLLDRLNQLSKM	DAALALLLDRLNQL, LLLLDRLNQLSKMS	LLLDRLNQL	
N-33	225-241	DRLNQLSKMSGKQQQ	LLLDRLNQLSKMS		
N-36	246-262	VTKKSAAEASKKPRQKR	AAEASKKPRQKRTAT		
N-37	253-269	EASKKPRQKRTATKAYN	AAEASKKPRQKRTAT, KKPRQKRTATKAYNV	KPRQKRTAT	
N-38	260-276	QKRTATKAYNVQAFGR	KKPRQKRTATKAYNV, KRTATKAYNVQAFGR		
N-43	295-311	GTDYKHWPIAQFAPSA	WPQIAQFAPSASAFF		
N-44	302-318	PQIAQFAPSASAFFGMS	WPQIAQFAPSASAFF	APSASAFFGM	
N-45	309-325	PSASAFFGMSRIGMEVT		GMSRIGMEV	
N-47	316-332	GMSRIGMEVTPSGTWLT	PSGTWLTYTGAIKLD		
N-48	323-339	EVTSGTWLTYTGAIKL	PSGTWLTYTGAIKLD		
N-50	344-360	PNFKDQVILLNKHIDAY	FKDQVILLNKHIDAY		
N-51	351-367	ILLNKHIDAYKTFPPE	ILLNKHIDAYKTFPPE		
N-52	358-374	DAYKTFPPEPKKDKKK		KTFPPEPKK, KTFPPEPKKDKKK	

Supplementary Table 3 - Key Resources

<u>Reagent or Resource</u>	<u>Source</u>	<u>Identifier</u>
<i>Antibodies</i>		
Anti-human CD45-BUV395, Clone HI30	Becton Dickinson	563792
Anti-human CD45-BUV496, Clone HI30	Becton Dickinson	750179
Anti-human CD3-BUV615, Clone UCHT1	Becton Dickinson	612993
Anti-human HLA-DR-BUV661, Clone G46-6	Becton Dickinson	612981
Anti-human CD45RA-BUV737, Clone HI100	Becton Dickinson	612847
Anti-human CD26-BUV805, Clone M-A261	Becton Dickinson	749316
Anti-human CXCR3-BV421, Clone G025H7	Biolegend	353716
Anti-human CD45-e450, Clone HI30	Thermo Fisher	49-0459-42
Anti-human CD8a-BV480, Clone RPA-T8	Becton Dickinson	566163
Anti-human CCR7-BV605, Clone G043H7	Biolegend	353224
Anti-human CCR6-BV650, Clone G043G3	Biolegend	353426
Anti-human CD27-BV711, Clone M-T271	Biolegend	356430
Anti-human CD137-BV750, Clone 4B4-1	Biolegend	309844
Anti-human CD57-BV785, Clone QA17A04	Biolegend	393329
Anti-human CXCR5-BB515, Clone RF8B2	Becton Dickinson	564624
Anti-human CD45-Ax532, Clone HI30	Thermo Fisher	58-0459-42
Anti-human CD134-PerCP/cy5.5, Clone BerACT35	Biolegend	350010
Anti-human PD-L1-PE, Clone 29E.2A3	Biolegend	329705
Anti-human CCR4-PE/Dazzle594, CLone L291H4	Biolegend	359420
Anti-human CD25-PE/Cy5, Clone BC96	Biolegend	302608
Anti-human CD127-PE/Cy7, Clone hIL7Rm21	Biolegend	560822
Anti-human ICOS-APC, Clone C398.4a	Biolegend	313509
Anti-human CD4-SparkNIR685, Clone SK3	Biolegend	344657
Anti-human CD69-APC/R700, Clone FN50	Becton Dickinson	565154
Anti-human gdTCR-APC/Fire750, Clone B1	Biolegend	331228
Anti-human CD19-APC/Fire810, Clone HIB19	Biolegend	302271
Anti-human CD69-BUV395, Clone FN50	Becton Dickinson	564364
Anti-human IL-13 BV421, Clone JES10-5E2	Biolegend	501916
Anti-human CD3 eF450, Clone OKT3	eBioscience	48-0037-42
Anti-human CD107a BV510, Clone H4A3	Biolegend	328632
Anti-human IL-17A BV570, Clone BL168	Biolegend	512324
Anti-human CD154 Biotin, Clone hCD40L-M91	Becton Dickinson	552560
Streptavidin BV605, Clone 563260	Becton Dickinson	563260
Anti-human CD25 BV650, Clone M-A251	Becton Dickinson	563719
Anti-human CD45RA BV711, Clone HI100	Becton Dickinson	563733
Anti-human CD19 BV711, Clone SJ25C1	Becton Dickinson	563036
Anti-human CD16 BV711, Clone 3G8	Becton Dickinson	563127
Anti-human CD14 BV711, Clone M5E2	Biolegend	301838
Anti-human IL-2 BV785, Clone MQ1-17H12	Biolegend	500348
Anti-human CD127 AlexaFlour 488, Clone AO19D5	Biolegend	351314
Anti-human IL-21 PE, Clone 3A3-N2	eBioscience	12-7219-42
Anti-human IL-10 PE Dazzle 594, Clone JES3-9D7	Biolegend	501426
Anti-human CD8 PECy5, Clone RPA-T8	Becton Dickinson	555368
Anti-human IL-4 PECy7, Clone MP4-25D2	Biolegend	500824
Anti-human CXCR5 Alexa Flour 647, Clone J252D4	Biolegend	356906
Anti-human CD4 Alexa Flour 700, Clone RPA-T4	Becton Dickinson	557922

Anti-human IFN γ APCeF780, Clone 4s-B3	eBioscience	47-7319-42
Anti-human CD3-PerCpCy5.5, Clone HIT3a	BioLegend	300328
Anti-human CD14-PerCpCy5.5, Clone M5E2	BioLegend	301824
Anti-human CD16-PerCpCy5.5, Clone 3G8	BioLegend	302028
Anti-human CD19-BUV496, Clone SJ25C1	BD	612939
Anti-human CD20-BV711, Clone 2H7	BioLegend	302341
Anti-human IgM-BV510, Clone MHM-88	BioLegend	Cat #314521
Anti-human IgD-BUV395, Clone IA6-2	BD	563813
Anti-human IgG-BV786, Clone G18-145	BD	Cat #564230
Anti-human CD21-SB600 Clone, HB5	ThermoFisher	Cat #63-0219-41
Anti-human CD27-BV421, Clone M-T271	BioLegend	Cat #356418
Anti-human CD38-AF700, Clone HIT2	BD	Cat #56-0381-82
Anti-human IgA-Biotin, Clone IS11-8E10	Miltenyi	Cat #130-113-474
Anti-human IgA-PE-Vio 770, Clone IS11-8E10	Miltenyi	Cat #130-114-003
Anti-human CD11c-PEDazzle594, Clone 3.9	BioLegend	Cat #301642
Anti-human IgG-HRP	Jackson ImmunoResearch	Cat #109-035-088
anti-human IgA-HRP	Southern Biotech	Cat #2050-05

Bacterial and Virus Strains

SARS-CoV-2 (WA-1)	BEI resources	NR-52281
-------------------	---------------	----------

Biological Samples

Human PBMC	This paper	N/A
------------	------------	-----

Chemicals, Peptides, and Recombinant Proteins

Zombie LiveDead NIR	Biolegend	423105
Fixable Live Dead BLUE BUV496	Thermo Scientific	
Decoy Tetramer PE/Dy594/Dy650	This paper	N/A
SA-PE	Agilent	Cat#PJRS301-1
RBD Tetramer PE	This paper	N/A
BirA500 kit	Avidity	Cat #BirA500
anti-PE magnetic beads	Miltenyi Biotec	Cat#130-048-801
Streptavidin-BUV805	BD	564923
phorbol 12-myristate 13-acetate	Sigma-Aldrich	Cat#P8139
Ionomycin	Sigma-Aldrich	Cat#I9657
GolgiStop/monensin	Becton Dickinson	Cat#554724
Paraformaldehyde solution, 4% in PBS	Thermo Scientific	Cat#AAJ19943K2
Cytofix/Cytoperm	Becton Dickinson	Cat#554714
DMSO, Cell culture grade >99.5%	Sigma-Aldrich	Cat#D4540
CEFX Ultra SuperStim Pool	JPT	Cat#PM-CEFX-2
SARS-CoV-2 HLA Class I & II 15-mer peptides: Membrane	BEI Resources	Cat#NR-52403
SARS-CoV-2 HLA Class I & II 15-mer peptides: Nucleocapsid	BEI Resources	Cat#NR-52404
SARS-CoV-2 HLA Class I & II 15-mer peptides: Spike	BEI Resources	Cat#NR-52402
Dylight NHS Ester 594	ThermoFisher	46413
Dylight NHS Ester 650	ThermoFisher	62266
1X 3,3',5,5'-Tetramethylbenzidine (TMB)	Invitrogen	Cat#00-4201-56
Recombinant SARS-CoV-2 (Wuhan-1) RBD Protein	Walls et al, 2009	N/A
anti-CD40 agonist mAb	Miltenyi	130-094-133

Software and Algorithms

FlowJo10	Becton Dickinson	N/A
SpectroFlo	Cytek Biosciences	N/A
Prism	GraphPad	N/A
R	R core team	N/A