

SUPPLEMENTARY METHODS

Flow cytometry

All staining and processing were performed in a class II microbiological safety cabinet (MSCII). Centrifugation steps used capped tubes in a biosafety bucket, which were loaded and unloaded within the MSCII.

Fluorescence-activated cell sorting (FACS) tubes containing fragment crystallisation (Fc) block were prepared with 5 μ L of TruStain FcX (Biolegend 422301) and 5 μ L of monocyte blocker (Biolegend0426102). Antibody cocktails were prepared in FACS staining buffer (phosphate buffered saline 2% flow cytometry staining buffer [Gibco]) containing Brilliant violet plus buffer (BD 566385). Five minutes after addition of 100 μ L of whole blood/EDTA, 50 μ L of antibody staining cocktail was added to each tube before incubation in the dark at room temperature for 20 minutes. Red blood cells were lysed using BD FACS lyse and washed twice in staining buffer before fixation (Biolegend Fixation buffer). After 20 minutes, fixed samples were moved from the MSCII to cold storage. All samples were collected on a 5 laser BD LSR Fortessa at the FACS facility at Queens Medical Research Institute within 24 hours of staining. Freshly prepared 8 peak calibration beads were ran daily prior to sample collection.

Gating strategies

After exclusion of debris and selection of lymphocytes on FSC (forward scatter) versus SSC (side scatter) doublets were excluded and CD3⁺ T cells selected. CD4⁺ and CD8⁺ T cell subsets were selected and subdivided into naïve versus memory subsets according to expression of CD45RA and CCR7 as shown.

Expression of T-cell receptor $\gamma\delta$ on double negative cells expressing CD3 but neither CD4 nor CD8 was used to identify gamma-delta-T cells. Treg were gated within the CD4⁺ population as CD25⁺CD127⁻low cells.

After exclusion of debris and doublets CD45⁺ cells were selected and subdivided into lymphocytes, monocytes and granulocytes according to CD45 expression level and side scatter properties. Within the lymphocyte gate B cells were selected as CD19⁺ and antibody secreting cells identified as CD27⁺CD38⁺. Lineage negative monocytes (CD3⁻/CD19⁻/CD66b⁻/CD56⁻) were subdivided to classical, transitional and non-classical subsets according to expression of CD14 and CD16. Granulocytes were subdivided into neutrophils and eosinophils on the basis of CD16 expression.

After exclusion of debris and doublets SSC-H high, lineage negative (CD3⁻/CD19⁻/CD56⁻/Siglec-8⁻) events were gated and CD15⁺CD66b⁺ cells selected as neutrophils. Immature neutrophils were gated as CD10 low.

SUPPLEMENTARY TABLES

Table S1: List of antibodies

Target	Fluorophore	Clone	Isotype	Category number
CD3	AF700	UCHT1	ms IgG1	300424
CD4	BV711	OKT4	ms IgG2b	317440
CD8	BV421	RPA-T8	ms IgG1	301036
CD57	BV605	QA17A04	ms igG1	393304
CD45RA	FITC	HI100	ms IgG2b	304148
CCR7	PE-Dazzle	GO43H7	ms IgG2a	353236
CXCR3	PE	GO25H7	ms IgG1	353706
CCR6	PerCP-Cy5.5	G034E3	ms IgG2b	353406
CD103	APC	BerACT8	ms IgG1	350216
CD56	APC-cy7	HCD56	ms IgG1	318332
CD45RO	PerCP	UCHL1	ms IgG2a	304252
TCR gamma delta	BV510	B1	Ms IgG1	331220
CD38	FITC	HIT2	ms IgG1	303504
HLA-DR	APC	L243	ms IgG2a	307610
CD39	BV605	A1	ms IgG1	328236
PD-1	PE	EH12.2H7	ms IgG1	329905
CD25	BV650	V T0-72	ms IgG2b	302634
CD127	PerCP-cy5.5	A019D5	ms IgG1	351321
Tim3	PeDazzle	F38-2E2	ms IgG1	354034
CD45	PerCP	2D1	ms IgG1	368506
CD3	AF700	SK7	ms IgG1	344822
CD19	PE-dazzle	HIB19	ms IgG1	302252
CD56	APC-cy7	HCD56	ms IgG1	318332
CD14	BV711	63D3	msIgG1	367140
CD16	BV421	VNK80	msIgG1	302038
HLA-DR	APC	L243	ms IgG2a	307610
CD66b	PE	QA17A51	ms IgG1	392904
CD27	PerCP-cy5.5	M-T271	ms IgG1	356408
CD38	FITC	HIT2	ms IgG1	303504
CD274	BV650	29E.2A3	ms IgG2b	329740
HLA-DR	BV650	L243	ms IgG2a	307650
CCR2	PerCPcy5.5	K03632	Ms IgG2a	357204
CX3CR1	PE-dazzle	2A9-1	rat igG2b	341624
CCR5	APC-cy7	J418F1	rat igG2b	359110
CD3	APC	UCHT1	ms IgG1	300412
CD19	APC	HIB19	ms IgG1	302212
CD56	APC	HCD56	ms IgG1	318310
Siglec8	APC	7C9	msIgG1	347106
CD66b	PE	6/40c	ms IgG1	392904
CD15	APC-Cy7	W6D3	msIgG1	323048
CD11b	PerCPcy5.5	LM2	ms IgG1	393106
CD62L	PE-Dazzle	DREG-56	ms IgG1	304842
CD64	BV711	10.1	ms IgG1	305042
CD16	BV421	3g8	msIgG1	302038
CD10	BV605	HI10a	msIgG1	312222
CD54 (ICAM-1)	AF700	HA58	ms IgG1	353126
CD181 (CXCR1)	AF488	8F1 CXCR1	ms IgG2a	320616

All antibodies were supplied by Biolegend.

Table S2: Continuous outcome variable results: haematological and biochemical safety laboratory outcomes and vital signs

Variable	Mean	95% HPD interval	
		Lower limit	Upper limit
Haemoglobin (g/L)	-0.495	-7.21	5.963
Haematocrit (ratio)	-0.206	-5.04	4.996
Red cell count (10 ⁹ /L)	-0.128	-4.87	4.641
Mean cell volume (fl)	-0.136	-5.73	5.546
Mean cell Hb (pg)	-0.344	-5.36	4.608
Mean cell Hb concentration (g/L)	0.050	-6.94	7.375
White cell count (10 ⁹ /L)	-0.489	-6.04	5.255
Neutrophil count (10 ⁹ /L)	0.031	-5.80	6.003
Lymphocytes (10 ⁹ /L)	-0.030	-5.64	5.422
Monocyte count (10 ⁹ /L)	0.112	-5.93	5.751
Basophil count (10 ⁹ /L)	-0.640	-5.88	4.626
Eosinophil count (10 ⁹ /L)	0.691	-10.8	12.99
Platelet count (10 ⁹ /L)	17.76	-25.5	59.05
Random glucose (micromole/L)	-0.536	-6.45	4.911
Urea (mmol/L)	0.533	-5.08	6.125
Sodium (mmol/L)	-0.203	-5.25	5.327
Potassium (mmol/L)	0.144	-4.96	5.791
Chloride (mmol/L)	-1.05	-7.05	4.631
Magnesium (mmol/L)	-0.090	-5.95	6.038
Bicarbonate (mmol/L)	0.856	-4.65	6.472
Creatinine (micromole/L)	-1.77	-8.39	4.721
Total protein (g/L)	-0.896	-6.93	5.036
Albumin (g/L)	-1.05	-6.37	4.081
AST (U/L)	-10.3	-28.4	7.814
Total bilirubin (micromole/L)	0.741	-4.83	6.798
GGT (U/L)	-15.2	-44.2	15.82
ALT (U/L)	-2.97	-26.2	20.77
Alkaline phosphatase (U/L)	-1.37	-9.75	6.990
LDH (U/L)	-18.8	-62.7	25.53
Ferritin (micromole/L)	63.66	-96.9	220.1
CRP (mg/L)	0.168	-27.1	27.82
Troponin (ng/L)	-0.469	-10.5	10.06
Triglycerides (mmol/L)	-0.696	-6.69	4.959
D-dimer (ng/ml)	5.609	-208	209.1
Creatinine kinase (U/L)	-23.1	-76.8	25.12
INR (ratio)	-0.444	-5.43	4.268
Prothrombin time (seconds)	-0.484	-5.42	4.740
Fibrinogen (g/L)	-0.071	-6.14	5.822
aPTT (seconds)	0.226	-6.06	6.674

Protein C (IU/ml)	-0.134	-5.78	5.671
Antithrombin (IU/ml)	-0.131	-6.16	5.718
O ₂ saturation (%)	0.616	-3.49	4.848
Respiratory rate (bpm)	0.774	-5.06	6.715
Systolic Blood Pressure (mm Hg)	-3.62	-13.6	6.819
Diastolic Blood Pressure (mm Hg)	-0.773	-7.81	6.425
Temperature (degrees C)	0.196	-4.78	5.035
Pulse (bpm)	5.242	-4.52	14.52
ECG rate	2.143	-8.11	12.86
ECG QTc	-4.37	-22.5	13.09

All of the 95% HPD credible intervals include zero, and therefore none are statistically significant. Some posterior means may be of a sufficiently high magnitude to be clinically relevant. ALT=alanine aminotransferase. aPTT=activated partial thromboplastin time. AST=aspartate aminotransferase. CRP=c-reactive protein. ECG=electrocardiogram. GGT=gamma-glutamyltransferase. Hb=haemoglobin. HPD=highest posterior density. INR=international normalised ratio. LDH=lactate dehydrogenase. QTc=corrected QT interval.

Table S3: Trough (pre-dose) plasma GB0139 concentrations (ng/mL) in IPF patients (unpublished data on file from ClinicalTrials.gov identifier: NCT02257177)

	Day 2	Day 3	Day 7	Day 14	Day 15
n	5	5	5	5	5
Mean (SD)	12.93 (7.88)	16.02 (9.83)	14.88 (7.63)	16.38 (8.56)	14.66 (8.64)
CV, %	61	61	51	52	59
Geometric mean	10.21	13.25	12.77	13.53	12.17
Median (min-max)	14.99 (2.55-22.49)	15.11 (4.24-30.15)	15.19 (4.16-23.81)	15.33 (3.42-24.74)	15.18 (3.95-26.14)

CV=coefficient of variation. IPF=idiopathic pulmonary fibrosis. max=maximum. min=minimum. SD=standard deviation.

Table S4: Mortality in patients with COVID-19 with NEWS2 \geq 4 in DEFINE

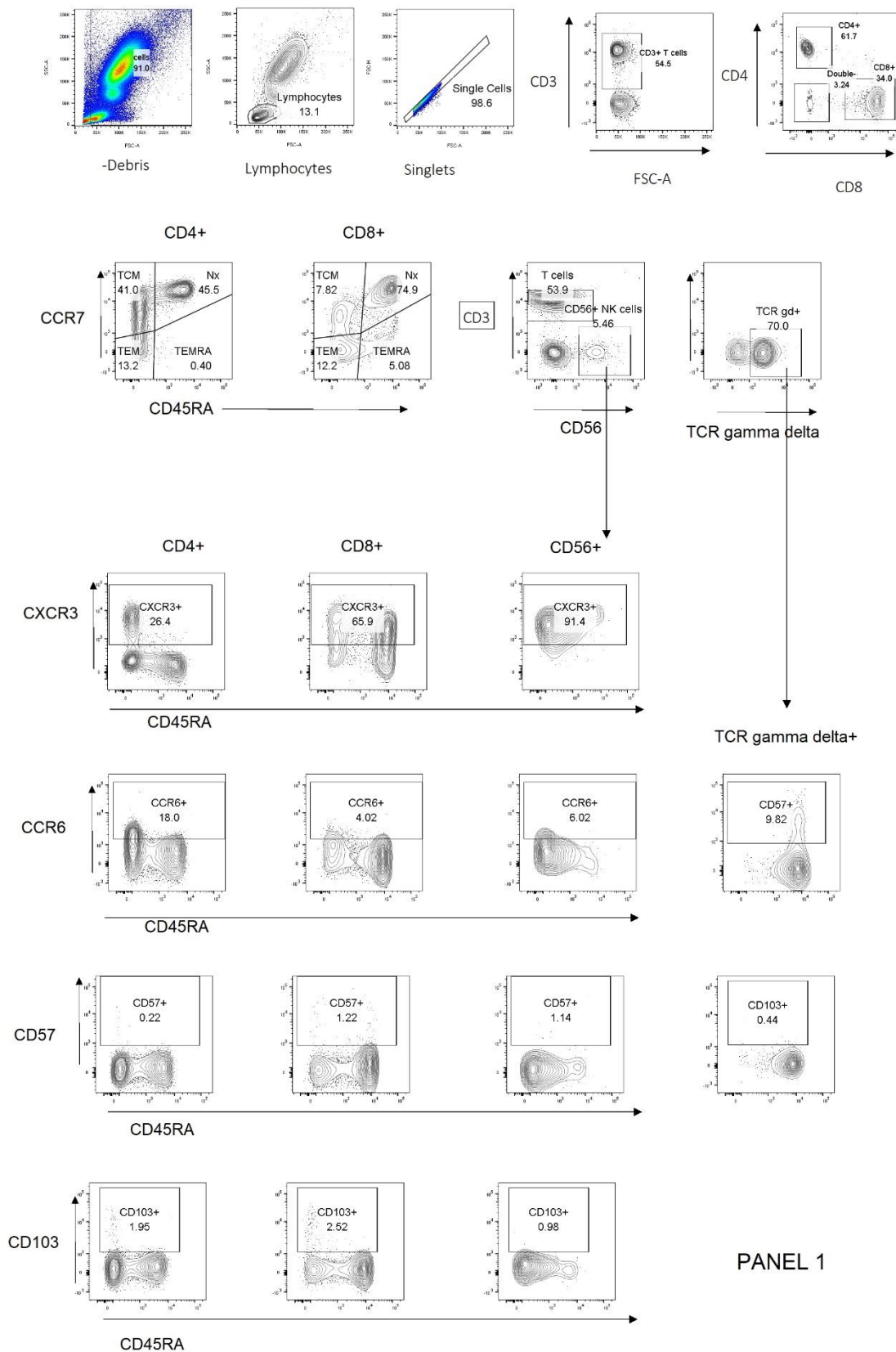
Treatment	No. of patients	Deaths (%)	Narrative
GB0139+SOC	14	3 (21.4)	Male; aged 71–75 years; BMI of 29.3; comorbid cardiovascular and lung disease; GB0139 received over 2 days; died within 1 week of hospital admission
			Male; aged 86–90 years; BMI of 33.3; comorbid cardiovascular disease; initially treated with SOC, heparin, dexamethasone, antibiotics, GB0139 received over 2 days; the patient was extremely unwell since admission with very high oxygen requirements; died within 10 days of hospital admission
			Male; aged 61–65 years; BMI of 29; comorbidities present including cardiovascular and metabolic disease; GB0139 received over 3 days (NEWS2 decreased from 5 to 3); died within 3 weeks of hospital admission
SOC	11	3 (27.3)	Male; aged 81–85 years; BMI of 32.7; comorbid cardiovascular, lung, and metabolic disease; died within 10 days of hospital admission
			Female; aged 61–65 years; BMI of 38.6; comorbid cardiovascular and lung disease; died within 3 weeks of hospital admission
			Female, aged 81–85 years; BMI of 28.8; comorbid cardiovascular and inflammatory disease; short admission

BMI=body mass index. NEWS2=National Early Warning Score 2. SOC=standard of care.

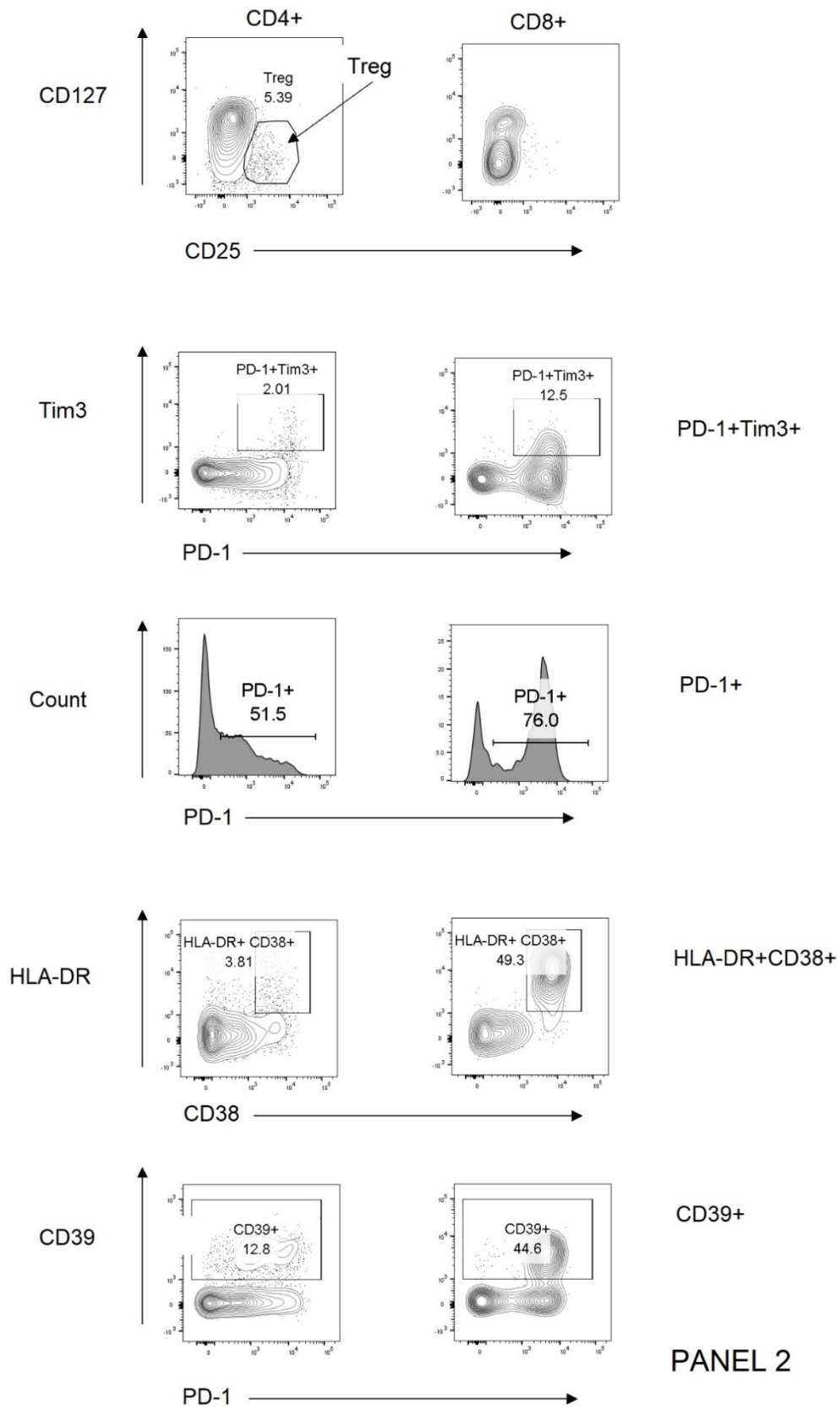
SUPPLEMENTARY FIGURES

Figure S1: Gating strategies

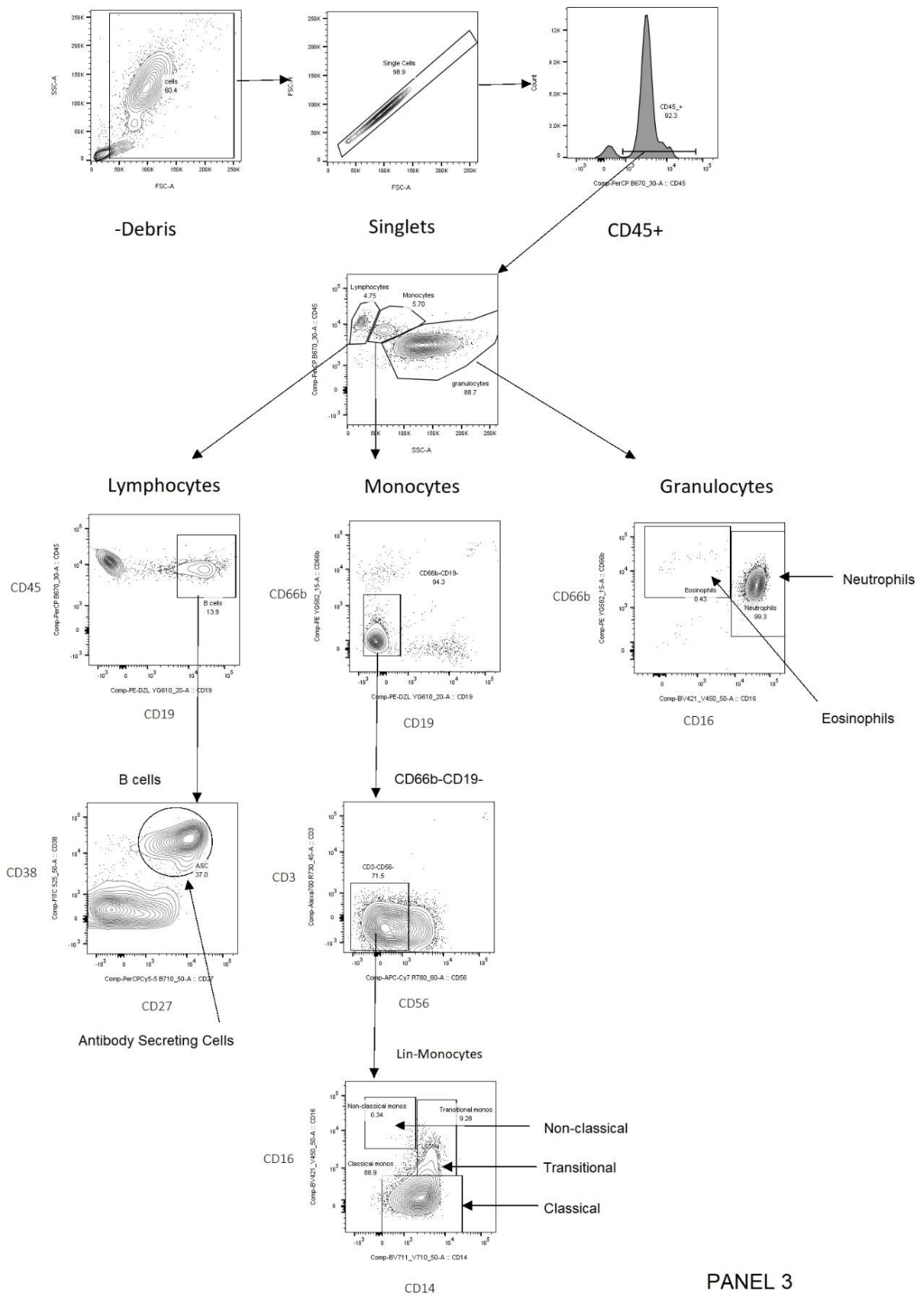
Gating strategies for T cell subsets



Gating strategy for T cell subsets



Gating strategy for B cells and monocytes



Gating strategy for neutrophils

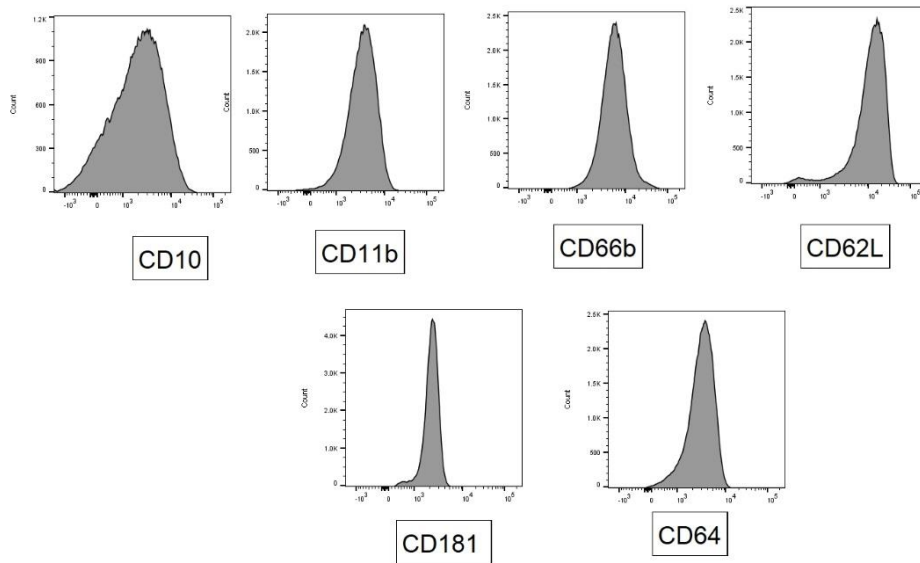
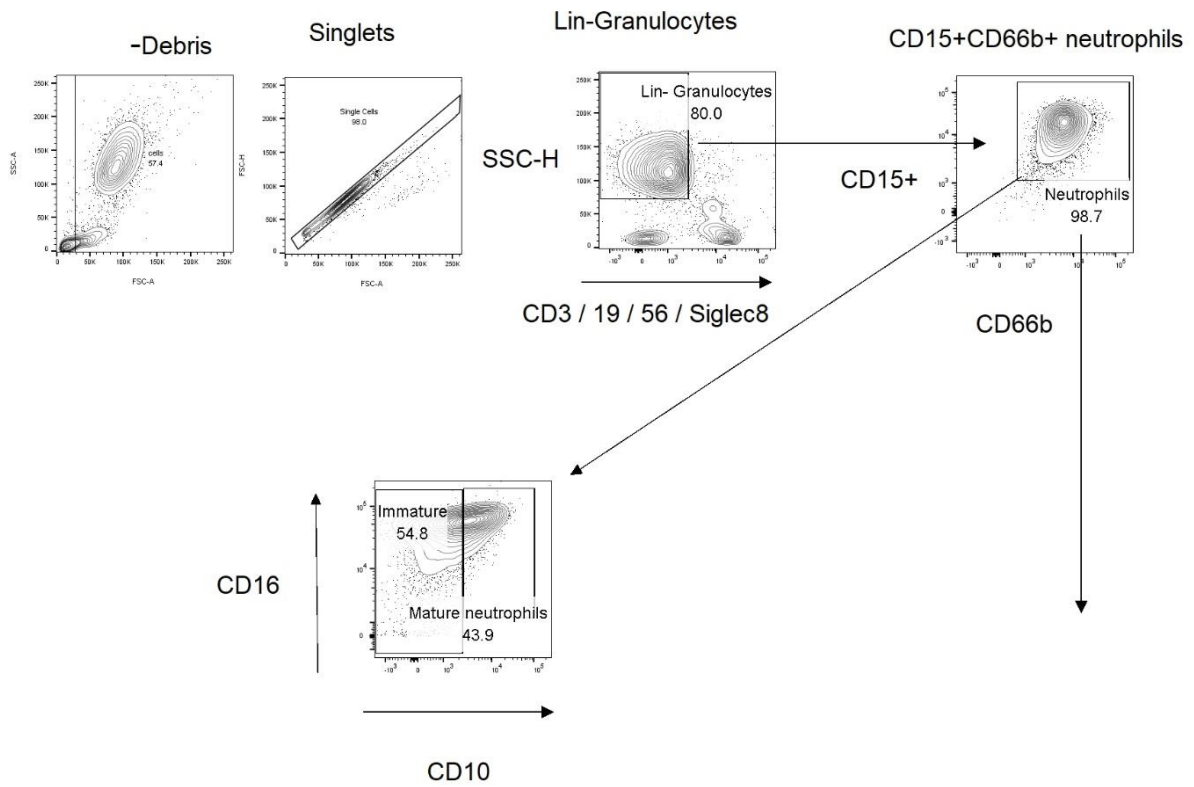
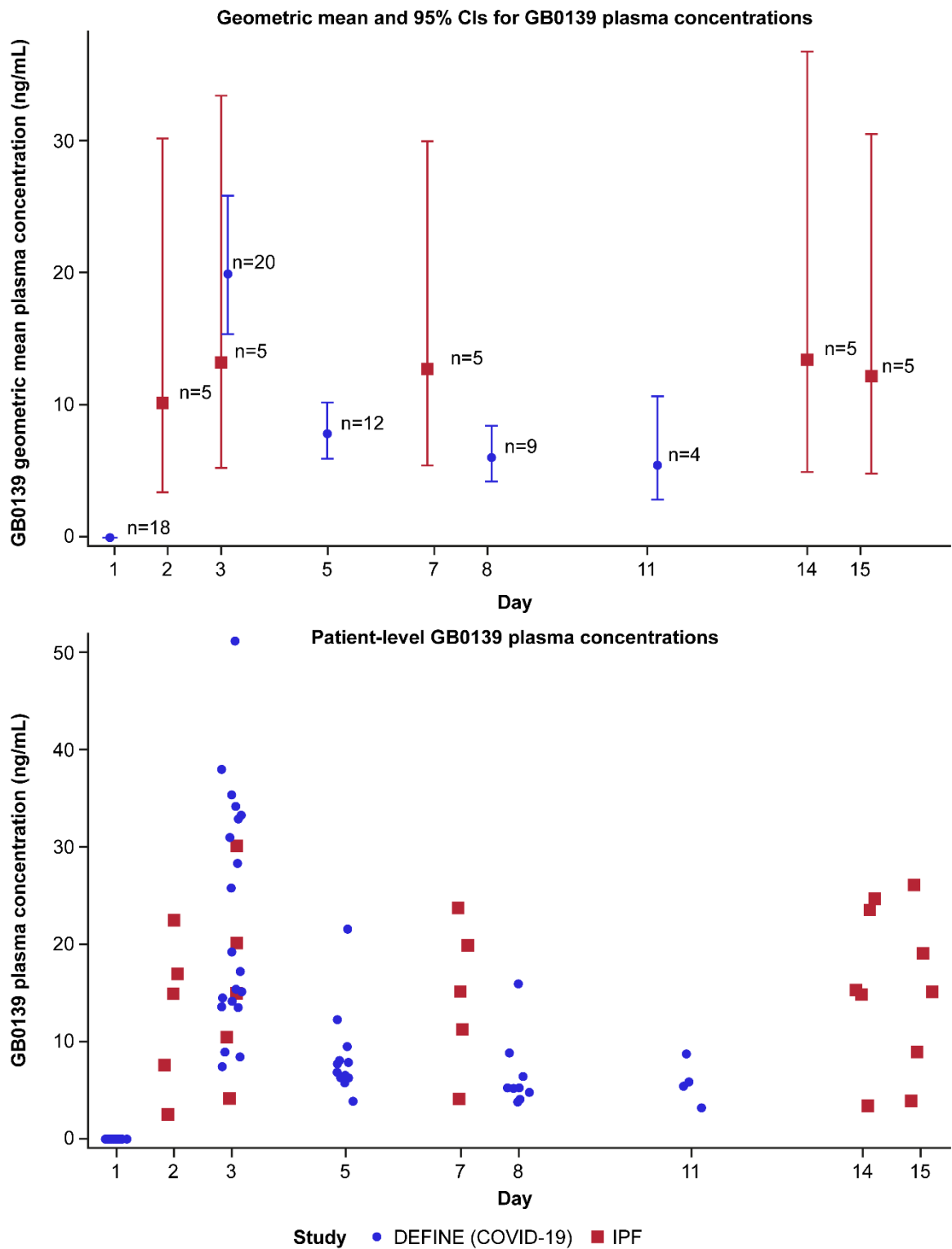
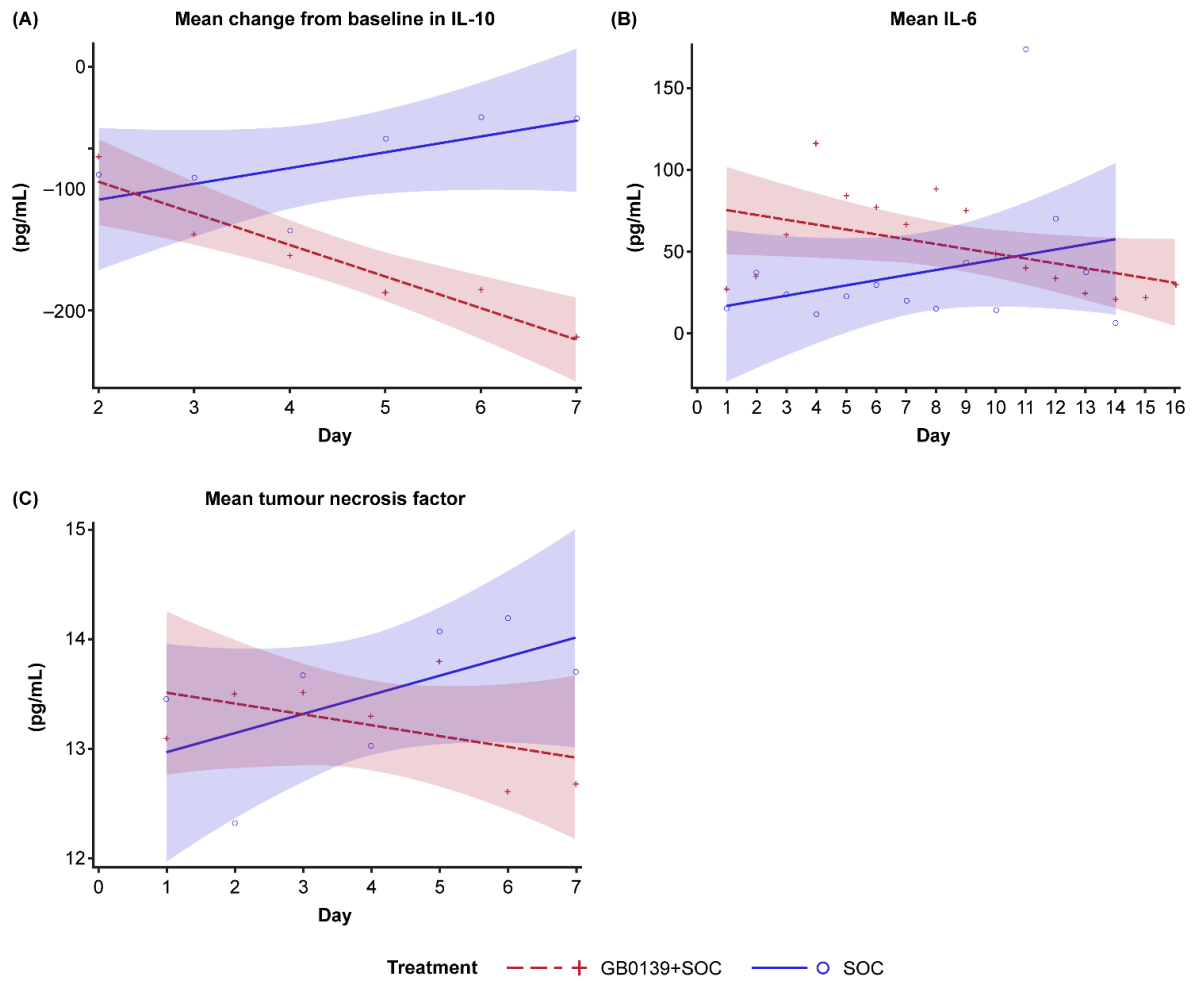


Figure S2: GB0139 plasma concentrations in patients with COVID-19 and patients with IPF



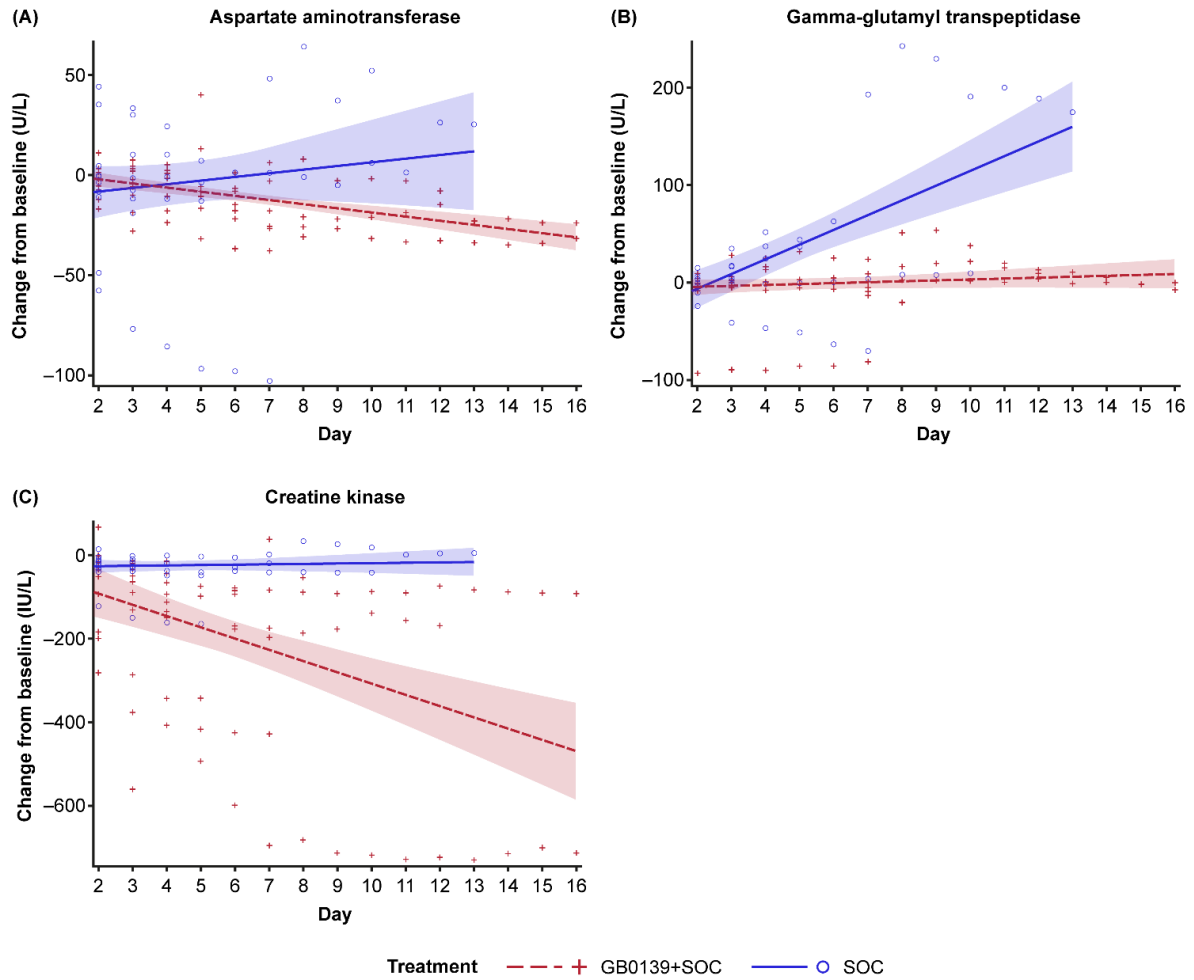
CI=confidence interval. IPF=idiopathic pulmonary fibrosis.

Figure S3: Effect of GB0139+SOC (red) and SOC (blue) on markers of inflammation in the overall population: (A) IL-10, (B) IL-6, and (C) tumour necrosis factor



Linear regression analysis showing line of best fit with 95% CI (shaded area). CI=confidence interval. IL=interleukin. SOC=standard of care.

Figure S4: Treatment with GB0139+SOC indicates favourable trends, versus SOC alone, in organ function preservation in patients with NEWS2 ≥ 4 : (A) liver function (aspartate aminotransferase, gamma-glutamyl transpeptidase) and (B) general tissue damage (creatine kinase)



Linear regression analysis showing line of best fit with 95% CI (shaded area). CI=confidence interval. NEWS2=national early warning score 2. SOC=standard of care.