

## Supplementary Information

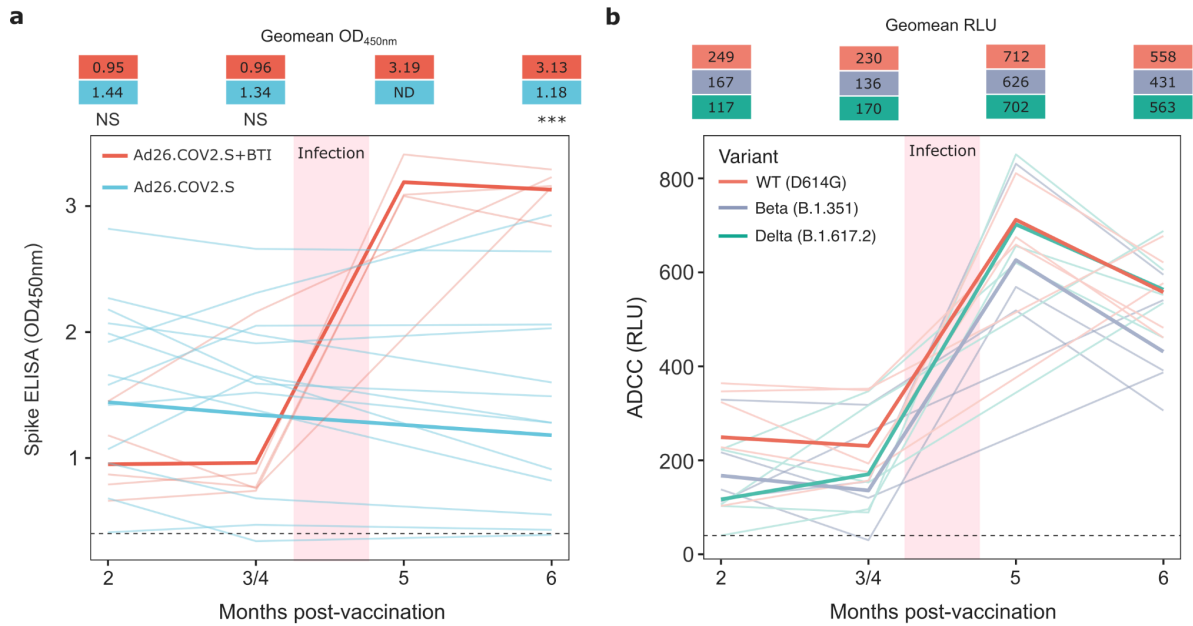
**Table S1: Study participant details**

<b>PTID<sup>a</sup></b>	<b>Month of Vaccination</b>	<b>Age range at Vaccination</b>	<b>Sex</b>	<b>Month of BTI<sup>b</sup></b>	<b>Severity of infection</b>
BTI01	2021/02	56-60	F	2021/06	Mild
BTI02	2021/02	36-40	F	2021/06	Mild
BTI03	2021/02	36-40	F	2021/07	Mild
BTI04	2021/02	56-60	F	2021/07	Mild
BTI05	2021/03	31-35	F	2021/08	Mild
BTI06*	2021/02	31-35	M	2021/07	Mild
V01	2021/03	56-60	F	N/A	N/A
V02	2021/03	31-35	F	N/A	N/A
V03	2021/03	31-35	M	N/A	N/A
V04	2021/03	26-30	F	N/A	N/A
V05	2021/03	31-35	M	N/A	N/A
V06	2021/03	31-35	F	N/A	N/A
V07	2021/03	51-55	F	N/A	N/A
V08	2021/03	26-30	F	N/A	N/A
V09	2021/03	31-35	F	N/A	N/A
V10	2021/03	26-30	F	N/A	N/A
V11	2021/03	26-30	F	N/A	N/A
V12	2021/03	36-40	F	N/A	N/A
V13	2021/03	26-30	F	N/A	N/A

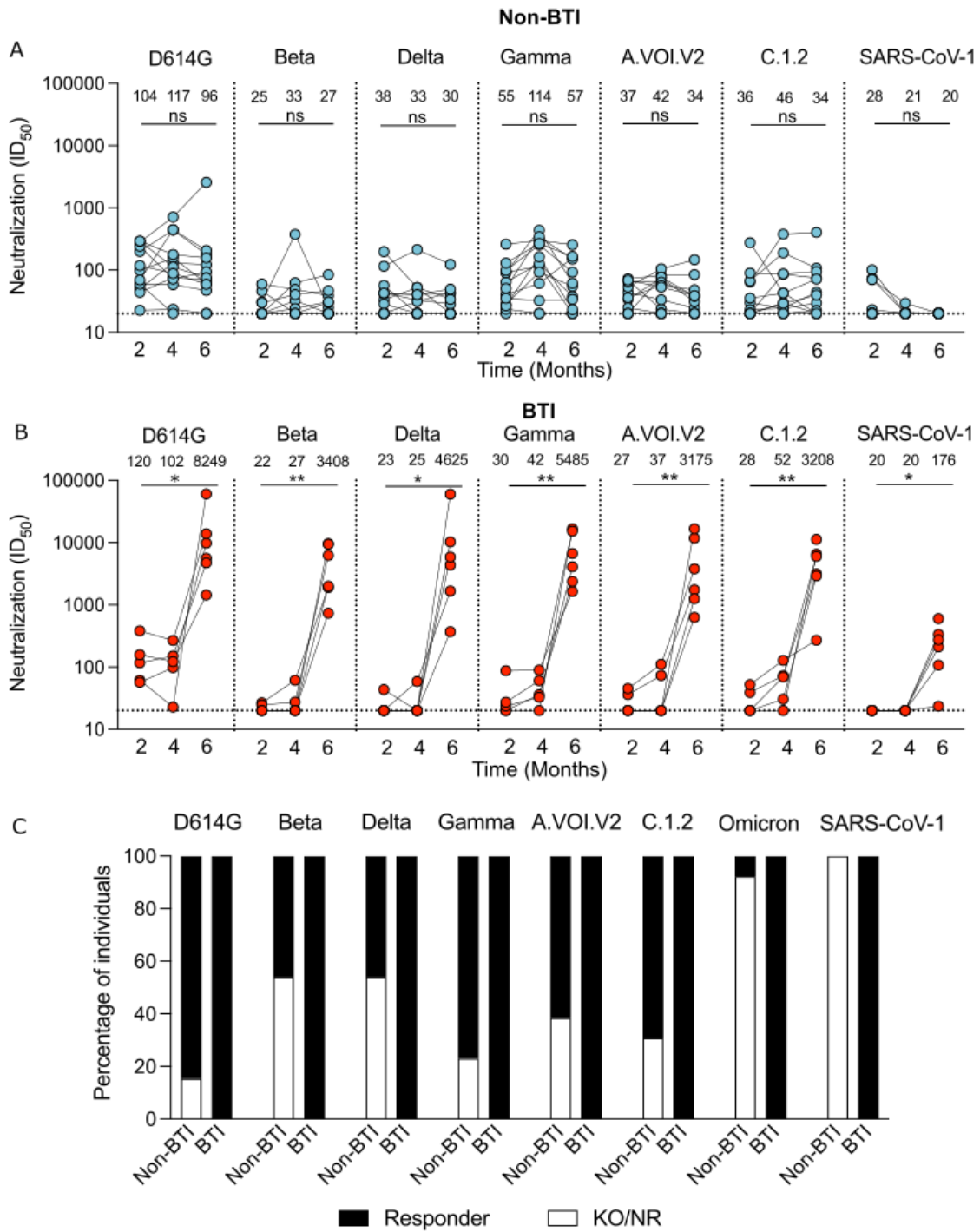
<sup>a</sup> Participant identifier (PTID)

<sup>b</sup> Breakthrough infection (BTI)

\* No longitudinal samples available, only 1-month post-BTI sample

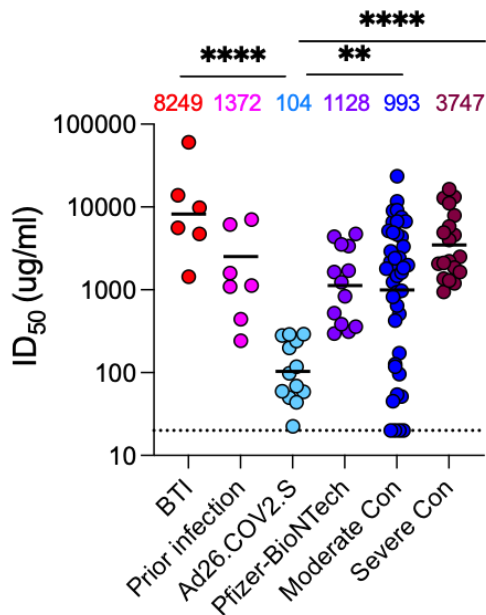


**Fig. S1: Spike specific antibody responses and antibody-dependent cellular cytotoxicity (ADCC) activity up to 6-months post-vaccination. (a)** Plasma samples from BTI and non-BTI participants were assessed for binding to the D614G spike protein ( $OD_{450nm}$ ) by ELISA. Spike binding responses for BTI and non-BTI participants are shown in red and blue, respectively, with each line showing the longitudinal response of an individual participant over time. Lines in bold show the geomean  $OD_{450nm}$  value for each group. The threshold for positivity is indicated by a dashed line. Statistical analyses were performed using the Mann-Whitney test between groups, with \*\*\* denoting  $p < 0.001$ , NS for non-significant and ND for no data. **(b)** Cross-reactive ADCC activity for BTI participants against the D614G, Beta and Delta variants up to 6 months post-vaccination, shown as relative light units (RLUs). The threshold for positivity is indicated by a dashed line.



**Fig. S2: Longitudinal neutralization responses over 6 months for BTI and non-BTI participants against SARS-CoV-2 variants and SARS-CoV-1.** Neutralization ID<sub>50</sub> titers are shown for (a) Ad26.COVS vaccinees that did not have breakthrough infection (non-BTI) and (b) BTI Ad26.COVS vaccinees at 2-, 3- or 4- and 6-months, against D614G, Beta, Delta, Gamma, C1.2. and A.VOI.2 variants, and SARS-CoV-1. Significance is shown as per Friedman test, across all time points where ns denotes non-significant, \*p<0.05; \*\*p<0.01. (c) Percentage of individuals

who are neutralization responders (Black;  $ID_{50} >20$ ), or are either non-responders or show knock-out relative to D614G (KO/NR,  $ID_{50} <20$ ; white) at 6-months post-vaccination.



**Fig. S3: BTI neutralization responses to the D614G variant compared to vaccinees and convalescent plasma.** Neutralization  $ID_{50}$  titers of two-dose Pfizer-BioNTech (2-months post-vaccination) and one-dose Ad26.COVS.S vaccinees (2-months post-vaccination) and hospitalised convalescent individuals with moderate and severe infection 10-days after a positive PCR test are shown compared to BTI individuals (1-month post-infection). Individuals who were previously infected by SARS-CoV-2 prior to Ad26.CoV2.S vaccination are shown 2-months post-vaccination. Limit of detection is indicated by a dotted line. GMT is indicated by the black bars and above the plot, while significant differences between groups, as calculated by Kruskal-Wallis ANOVA with Dunns correction, are shown above the graph with with \*\* denoting  $p < 0.01$  and \*\*\*\* denoting  $p < 0.0001$ .