

SUPPLEMENTAL MATERIAL

Full Title: Transplantation of iPSC-Derived Cardiomyocyte Patches for Ischemic Cardiomyopathy

Short Title: Translational research of iPSC for ICM

Authors: Shigeru Miyagawa, M.D., Ph.D.^{1*}, Satoshi Kainuma, M.D., Ph.D.¹, Takuji Kawamura, M.D., Ph.D.¹, Kota Suzuki, M.D.¹, Yoshito Ito, M.D.¹, Hiroko Iseoka, Ph.D.¹, Emiko Ito, Ph.D.¹, Maki Takeda, Ph.D.¹, Masao Sasai, Ph.D.¹, Noriko Mochizuki-Oda, Ph.D.¹, Tomomi Shimamoto, B.S.¹, Yukako Nitta, B.S.¹, Hiromi Dohi, Ph.D.², Tadashi Watabe, M.D., Ph.D.³, Yasushi Sakata, M.D., Ph.D.⁴, Koichi Toda M.D., Ph.D.¹, Yoshiki Sawa, M.D., Ph.D.¹

Affiliations:

¹Division of Cardiovascular Surgery, Department of Surgery, Osaka University Graduate School of Medicine, Suita, Osaka, Japan

²Center for iPS Cell Research and Application, Kyoto University, Japan

³Department of Nuclear Medicine and Tracer Kinetics, Japan

⁴Department of Cardiology, Osaka University Graduate School of Medicine, Suita,
Osaka, Japan.

*** Address Correspondence to:**

Shigeru Miyagawa, M.D., Ph.D.

Division of Cardiovascular Surgery, Department of Surgery, Osaka University Graduate
School of Medicine, 2-2, Yamada-oka, Suita, Osaka 565-0871, Japan

Email: miya-p@surg1.med.osaka-u.ac.jp

ORCID iD: 0000-0003-0015-6569

Online Data

Figure S1. Timeline of symptoms and treatment

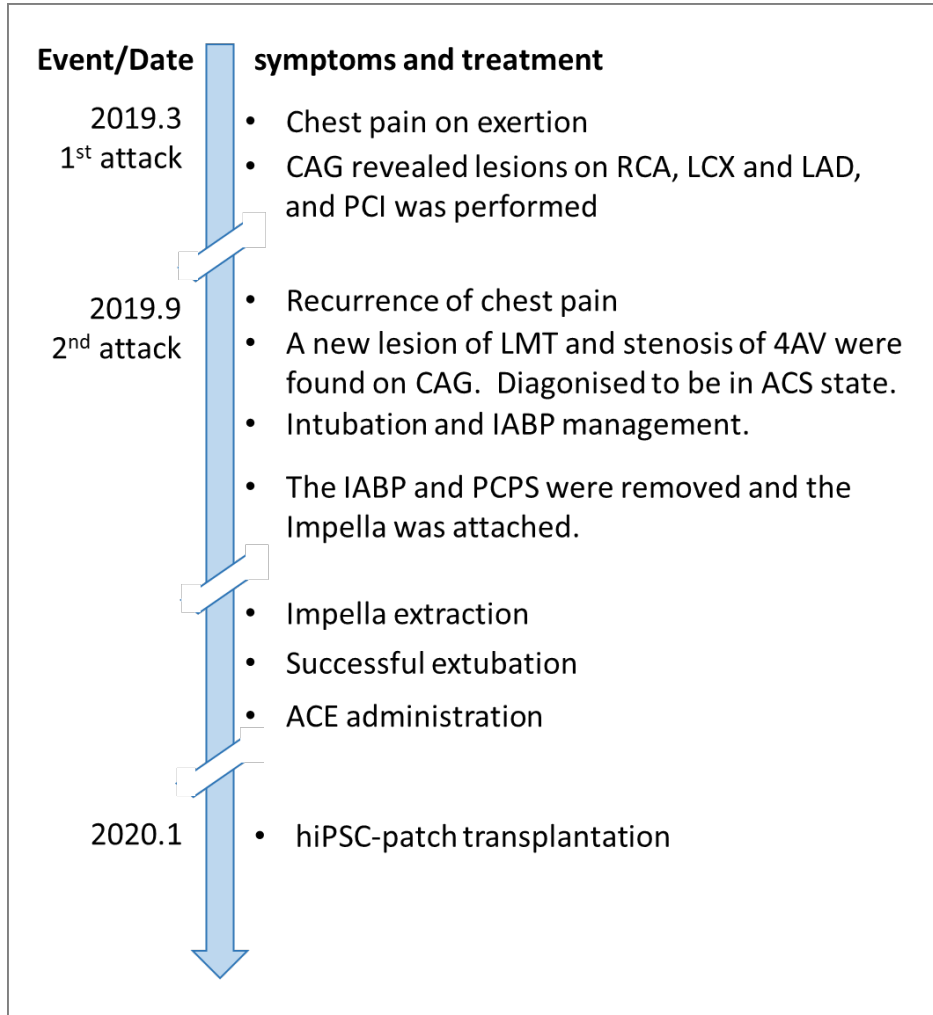


Figure S1. Timeline of symptoms and treatment.

The date in parentheses indicates the number of days since the 1st attack. CAG indicates coronary angiography; RCA, right coronary artery; LCX, left circumflex coronary artery branch; LAD, left anterior descending coronary artery; PCI, percutaneous coronary intervention; LMT, left main coronary trunk; AV, atrioventricular node branch; ACS, acute coronary syndrome; IABP, intra-aortic balloon pumping; PCPS, percutaneous cardiopulmonary support; and ACE, angiotensin-converting enzyme inhibitor.

Figure S2. Results of histochemical analysis of *in vivo* tumorigenicity test

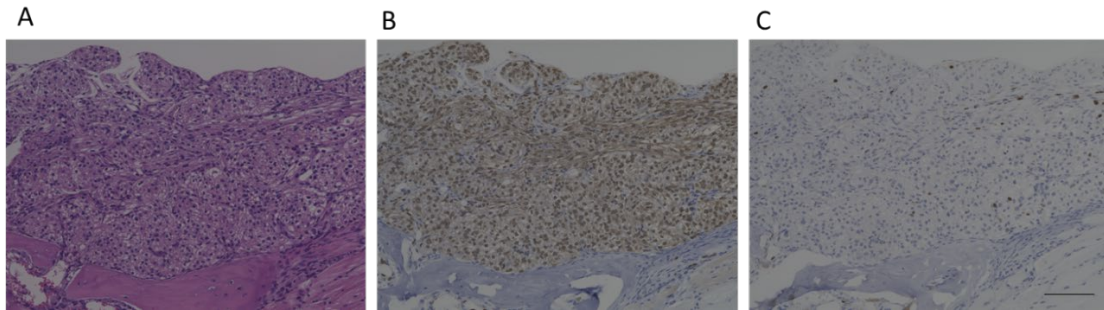


Figure S2. Representative images of H&E staining (A), immunostaining of Lamin (B), and Ki67 (C). Scale bar: 100 μm

No histological findings suggestive of tumorigenicity were found.

Figure S3. Array CGH analysis

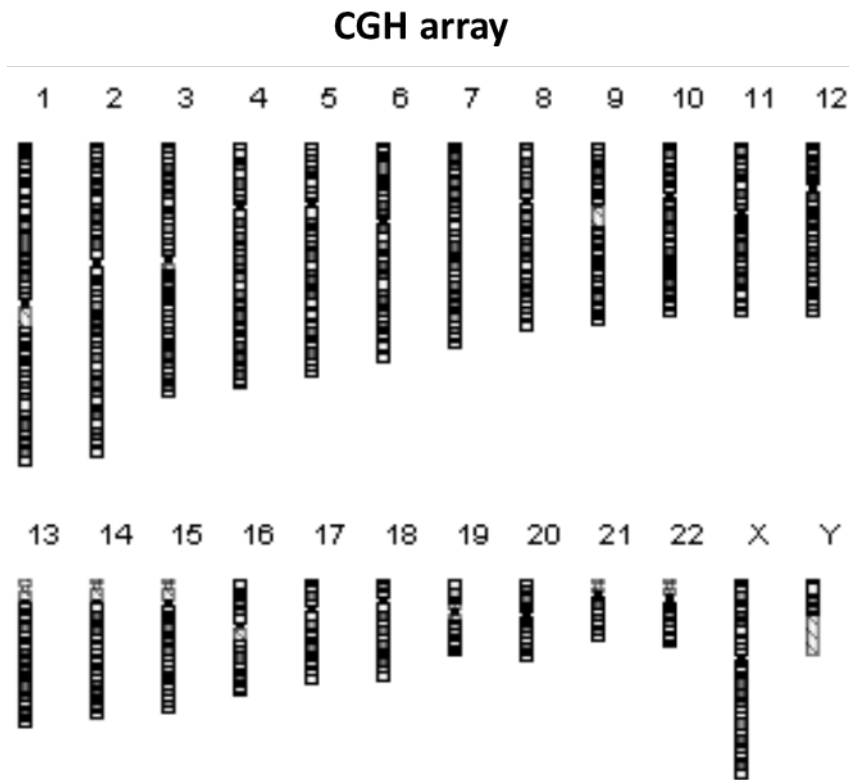


Figure S3. Array CGH analysis

Genomic DNA was extracted from cells. After confirming its quality, genomic DNA was fragmented and fluorescently labeled using the SureTag DNA Labeling Kit.

Undifferentiated iPSCs were used as controls. Competitive hybridization was performed using SurePrint G3 Human CGH Microarray, 2× 400K with the specified combination, and copy number change analysis was performed.

No CNV was observed in the hiPS-CM patch. If CNV was observed, dots (red for amplification and green for deletion) were displayed at that position.

Table S1: Quality test of master cell bank (MCB)

Assay	Method	Criteria	Results
Sterility Test	Direct inoculation method	Negative	Negative
Endotoxin test	Kinetic turbidimetric test	Negative	Negative
Mycoplasma Test	DNA staining method and direct culture method	Negative	Negative
200 Median cell profiles	Examination by transmission electron microscopy to detect viruses, virus-like particles, or extraneous agents, including mycoplasmas, yeasts, fungi, or bacteria	Negative	Negative
Detection of Reverse transcriptase enzymatic activity assay	Real-time fluorescent product enhanced reverse transcriptase (F- PERT) assay	Negative	Negative
Detection of human viral pathogens	Real-Time PCR (<i>HIV1</i> and 2 proviruses, <i>HAV</i> , <i>HBV</i> , <i>HCV</i> , <i>HHV-6</i> , <i>HHV-7</i> , <i>HHV-8</i> , <i>hCMV</i> , <i>EBV</i> , <i>SV40</i> , and <i>B19</i>)	Negative	Negative

<i>In vitro</i> virus assay	Inoculated into MRC-5, Vero C1008, and HeLa cell cultures and observed for the presence of cytopathology or hemadsorbing virus contamination	Negative	Negative
<i>In vivo</i> virus assay	Inoculated into adult mice, suckling mice, guinea pigs, and embryonated eggs, and observed the indications of any adventitious agents	Negative	Negative
Retrovirus assays	Co-cultivation assay using F-PERT	Negative	Negative
STR genotyping	PCR-capillary electrophoresis	Match with the original iPS cell profile	Match with the original iPS cell profile

STR, Short Tandem Repeat.