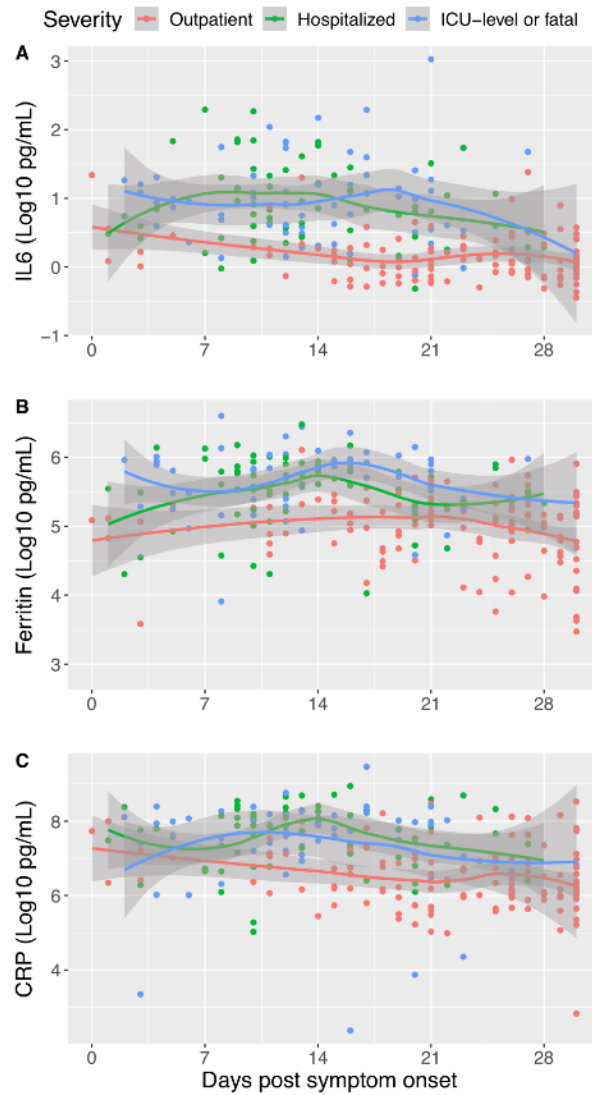


Table S1. Multivariable logistic regression models for clusters and plasma immune biomarker levels.

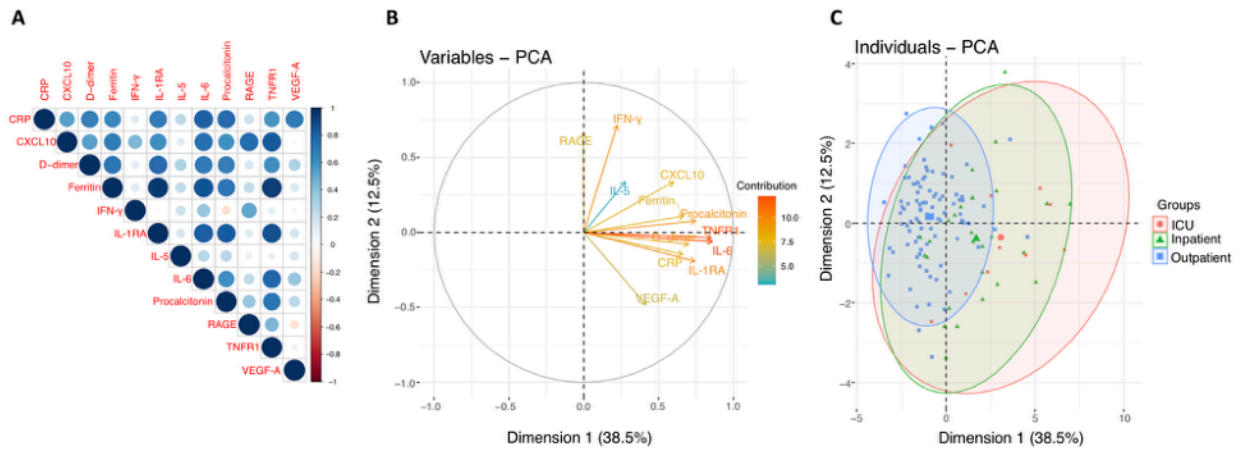
Models were fit comparing each cluster against all other clusters.

Cluster	Covariates in unadjusted model	OR* (95% CI)	AIC	Covariates in severity-adjusted** model	OR* (95% CI)	AIC
1			87.7			85.4
	CXCL10	238.1 (6.1, 9,238.2)		Severity	4.9 (2.0, 11.9)	
	IL1RA	4.3 (2.1, 8.9)		IL1RA	4.1 (2.1, 8.2)	
	RAGE	0.0007 (0.00005, 0.01)		RAGE	0.001 (0.00008, 0.02)	
2			91.9			102.0
	Ferritin	1.0 (0.990, 0.997)		Severity	0.4 (0.1, 0.9)	
	Procalcitonin	2.5e-14(1.7e-22, 3.6e-06)		Procalcitonin	2.8e-14 (06.5e-22, 1.2e-06)	
	RAGE	839.1 (58.7, 11,991.9)		RAGE	217.0 (24.2, 1,948.7)	
3			58.7			73.4
	Ferritin	1.0 (1.002, 1.007)		Severity	1.9 (0.9, 3.9)	
	VEGFA	3.1e-46 (3.2e-72, 2.9e-20)		VEGFA	1.1e-33 (2.6e-53, 4.8e-14)	

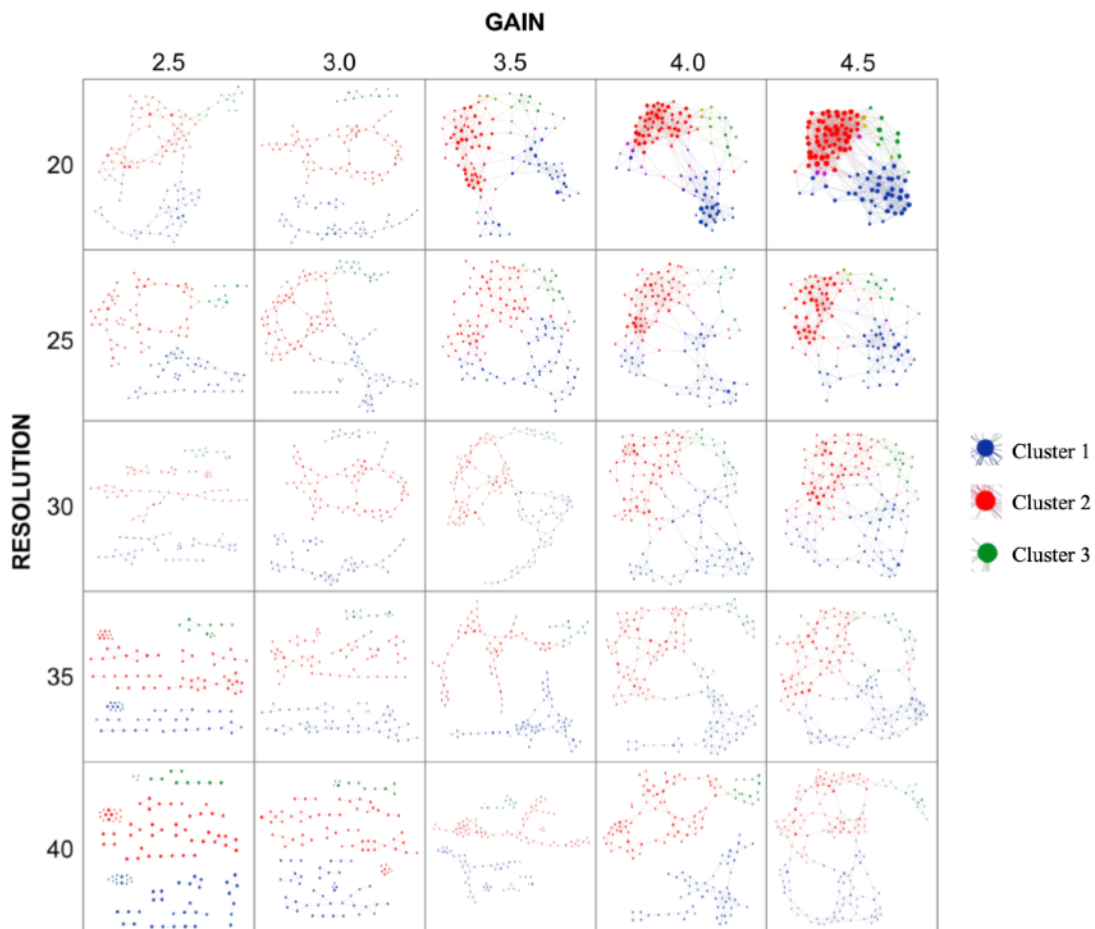
AIC: Akaike information criterion***Estimates are in ng/ml scale.******Peak severity on an ordinal scale with outpatient-level= 0, inpatient-level=1, ICU-level care =2, death =3**



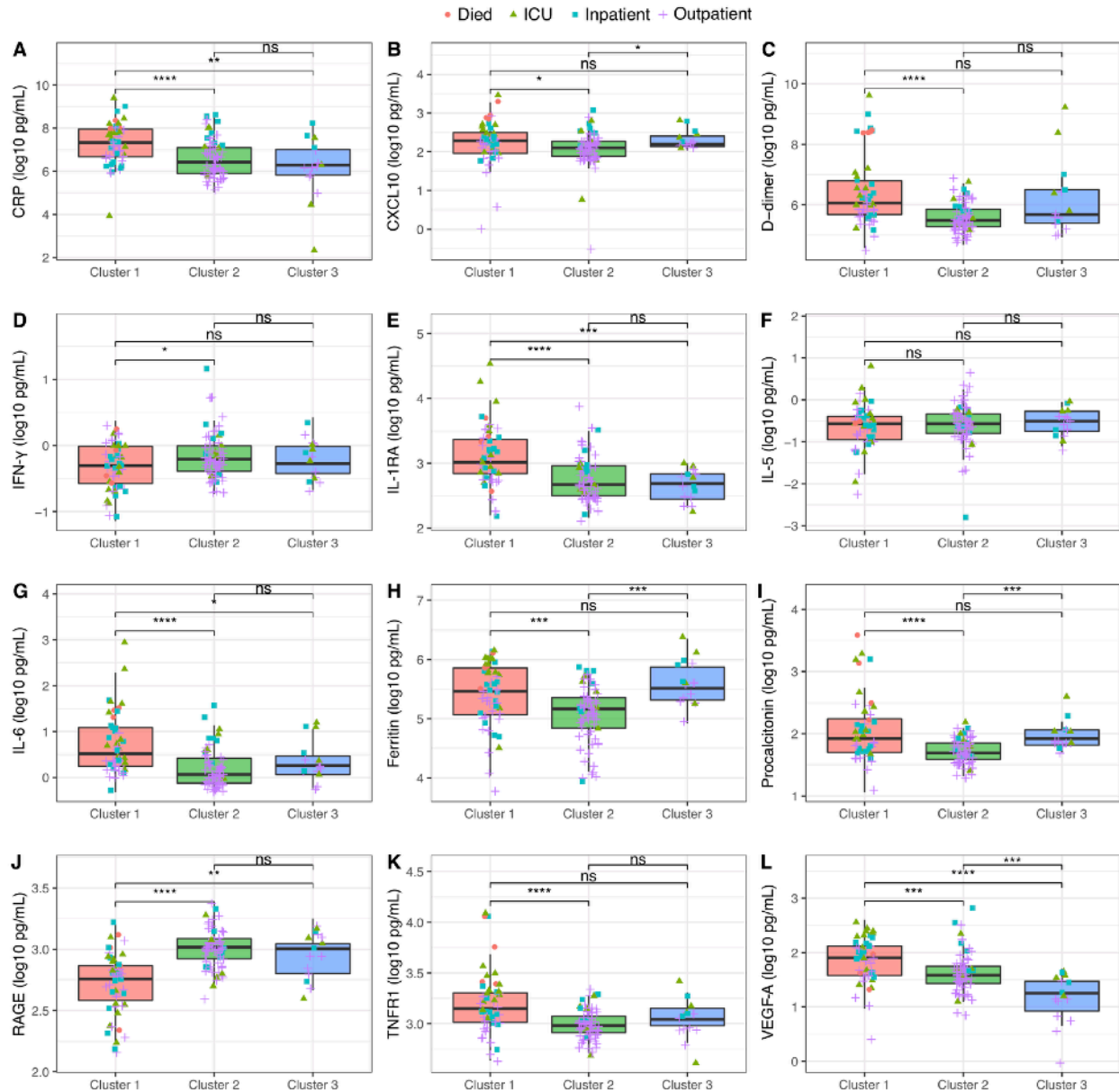
Supplementary Figure S1. Scatter plot with plasma IL6 (A), ferritin (B), and CRP (C) over time with LOESS (locally estimated scatterplot smoothing) curves stratified by peak severity from EPICC cohort between 0 to 29 days post symptom onset. While participants with mild illness have a down sloping LOESS curve, participants with moderate or severe illness had a late peaking curve during the third and fourth week of illness (the inflammatory phase). Each point represents a sample level with some participants having multiple samples collected. Points are jittered to avoid overplotting.



Supplementary Figure S2.A: Spearman's correlation matrix of inflammation biomarkers with size and color scale for correlation coefficient; B: PCA showing dimensionality of different analytes; C: PCA showing dimensionality of different analytes with peak severity labeled by color.



Supplementary Figure S3. TDA networks were generated for a range of resolution settings to examine the persistence of subject clusters and their interrelatedness. Clusters 1 (blue), 2 (red), and 3 (green) were observed consistently throughout different resolution and gain settings in the EurekaAI Workbench platform (SymphonyAI, Los Altos, CA, USA). Each node represents a combination of 12 plasma protein analyte levels and its size increases with the number of participants that are included.



Supplementary Figure S4. Immune biomarkers divided by TDA cluster. Each sample with peak COVID severity labeled by color and shape. Kruskal-Wallis test performed comparing analyte levels between clusters. *: $p \leq 0.05$; **: $p \leq 0.01$; ***: $p \leq 0.001$; ****: $p \leq 0.0001$