

Supplementary Material - Estimating the impact of implementation and timing of COVID-19 vaccination program in Brazil: a counterfactual analysis

Leonardo Souto Ferreira^{1,2,*}, Flávia Maria Darcie Marquitti^{2,3}, Rafael Lopes Paixão da Silva^{1,2}, Marcelo Eduardo Borges², Marcelo F C Gomes^{2,4}, Oswaldo G Cruz^{2,4}, Roberto André Kraenkel^{1,2}, Renato Mendes Coutinho^{2,5}, Paulo Inácio Prado^{2,6}, and Leonardo S Bastos^{2,4}

¹*Instituto de Física Teórica, Universidade Estadual Paulista, São Paulo, Brazil*

²*Observatório COVID-19 BR*

³*Instituto de Física 'Gleb Wataghin' and Instituto de Biologia, Universidade Estadual de Campinas, Campinas, Brazil*

⁴*Programa de Computação Científica, Fundação Oswaldo Cruz, Rio de Janeiro, Brazil*

⁵*Centro de Matemática, Computação e Cognição, Universidade Federal do ABC, Santo André, Brazil*

⁶*Instituto de Biociências, Universidade de São Paulo, São Paulo, Brazil*

* *Corresponding author: leonardo.souto@unesp.br*

December 24, 2021

This supplementary material contains a graphical measurement of fitting quality, a figure of vaccine coverage during the period analysed and the graphical results for individual states. The tabulated results for each state is available in our repository at <https://github.com/covid19br/bayes-vacina-paper> together with the code used to generate the results.

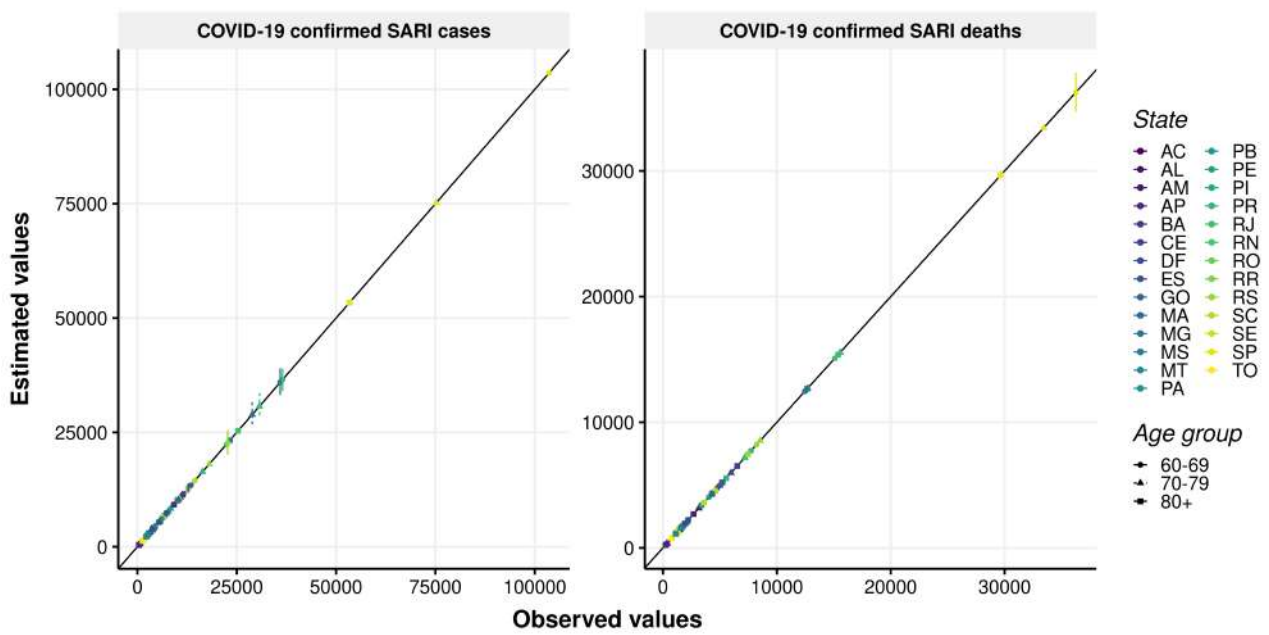


Figure 1: Estimated value of outcome (facet) as a function of the observed value, per state (color) and age group (point type). A black line with 45° inclination is plotted for reference. The nearer the line the better.

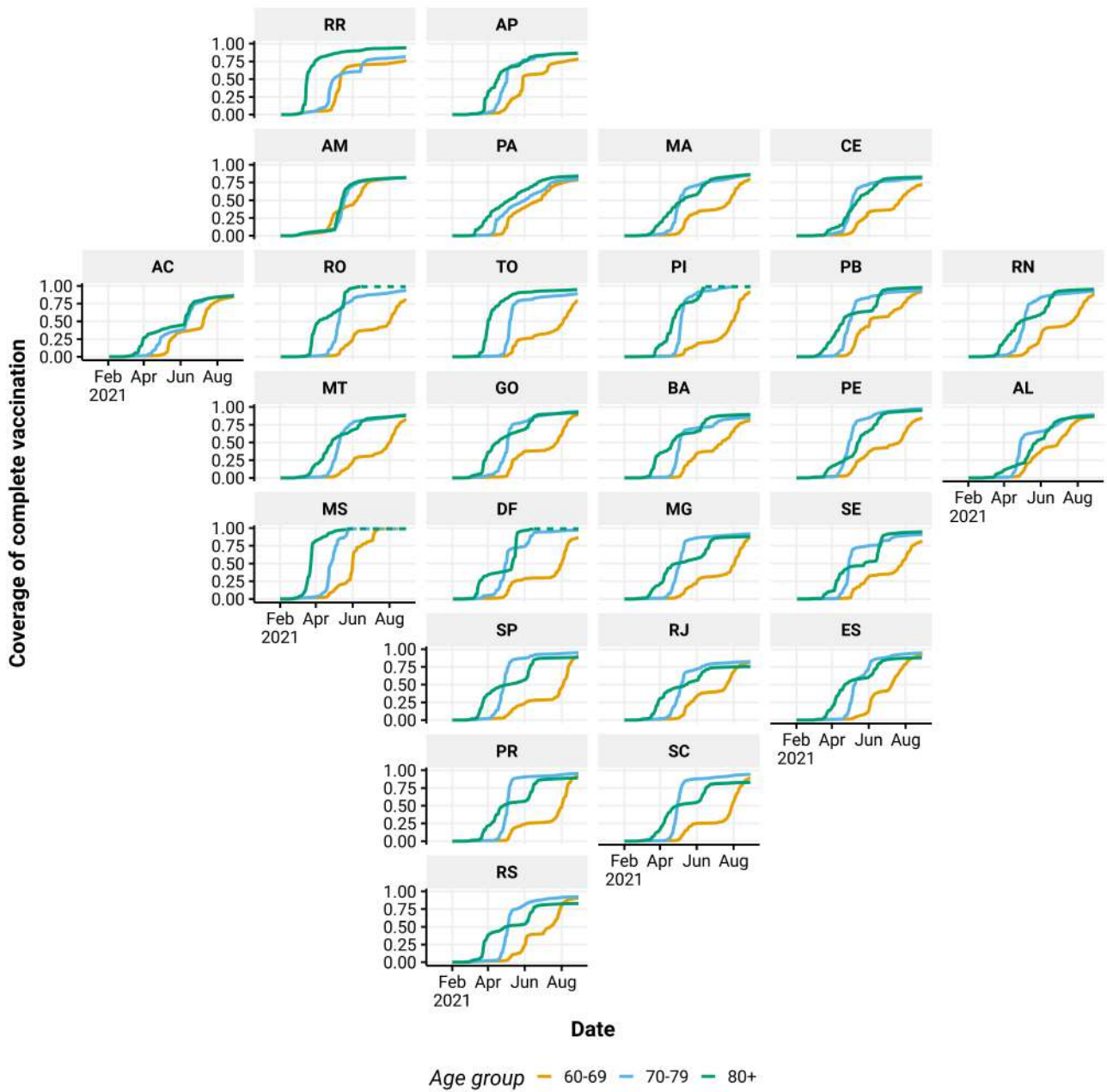


Figure 2: Vaccine coverage per age group. Due to imprecise estimates of population size, some age groups surpassed 100% coverage and these cases are denoted with a dashed line.

1 Results

1.1 North Region

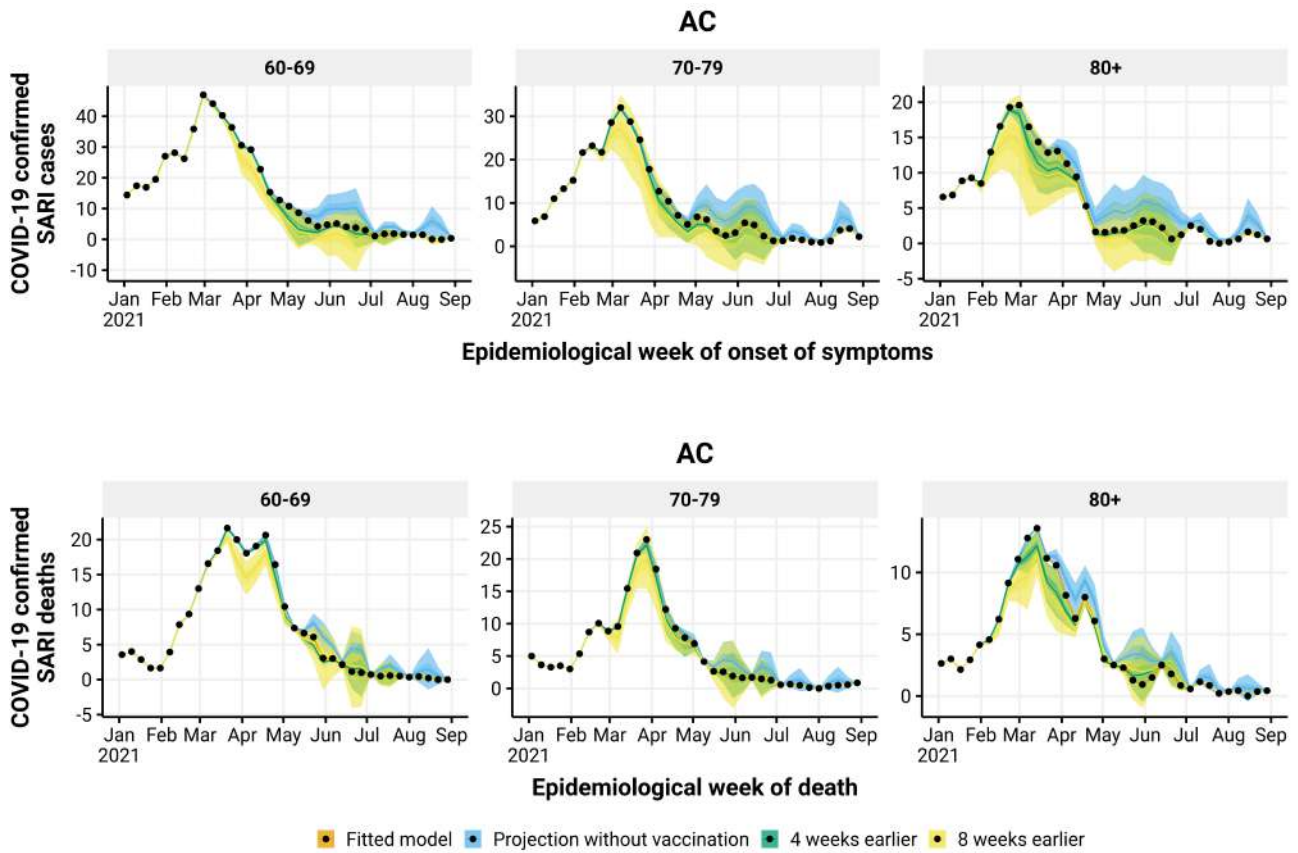


Figure 3: Estimated number of hospitalizations (top) and deaths (bottom) by epidemiological week with the realized (orange), no vaccination (blue), 4 (green) and 8 (yellow) weeks earlier vaccination rollout, by age group (panels), in AC state. The observed number of hospitalizations and deaths are given by the black points.

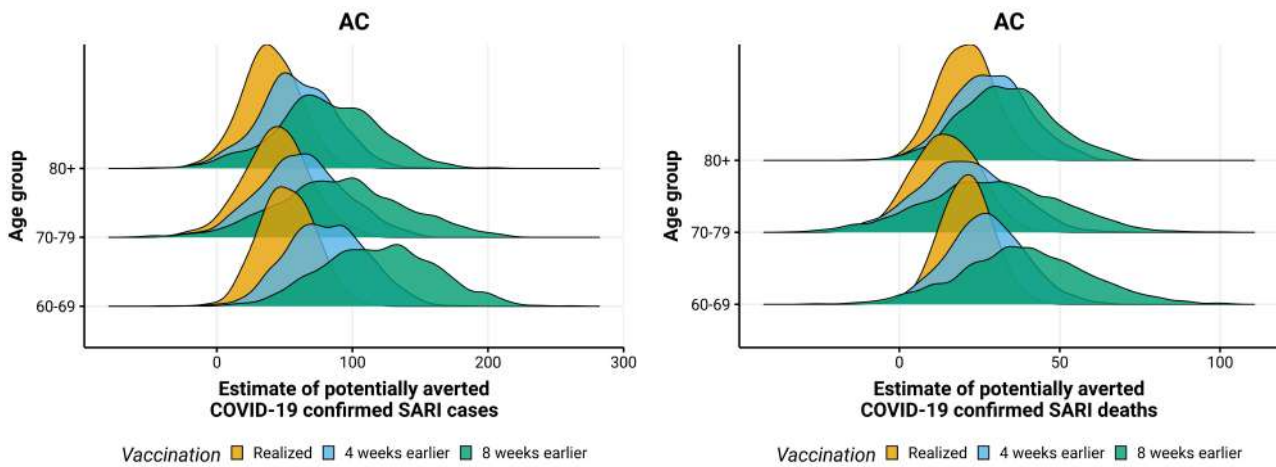


Figure 4: Posterior distribution of hospitalizations (left) and deaths (right) potentially averted by vaccination between 2021-01-01 and 2021-08-29 by age group, with the realized (orange), 4 (blue) and 8 weeks earlier (green) vaccination rollout in AC state.

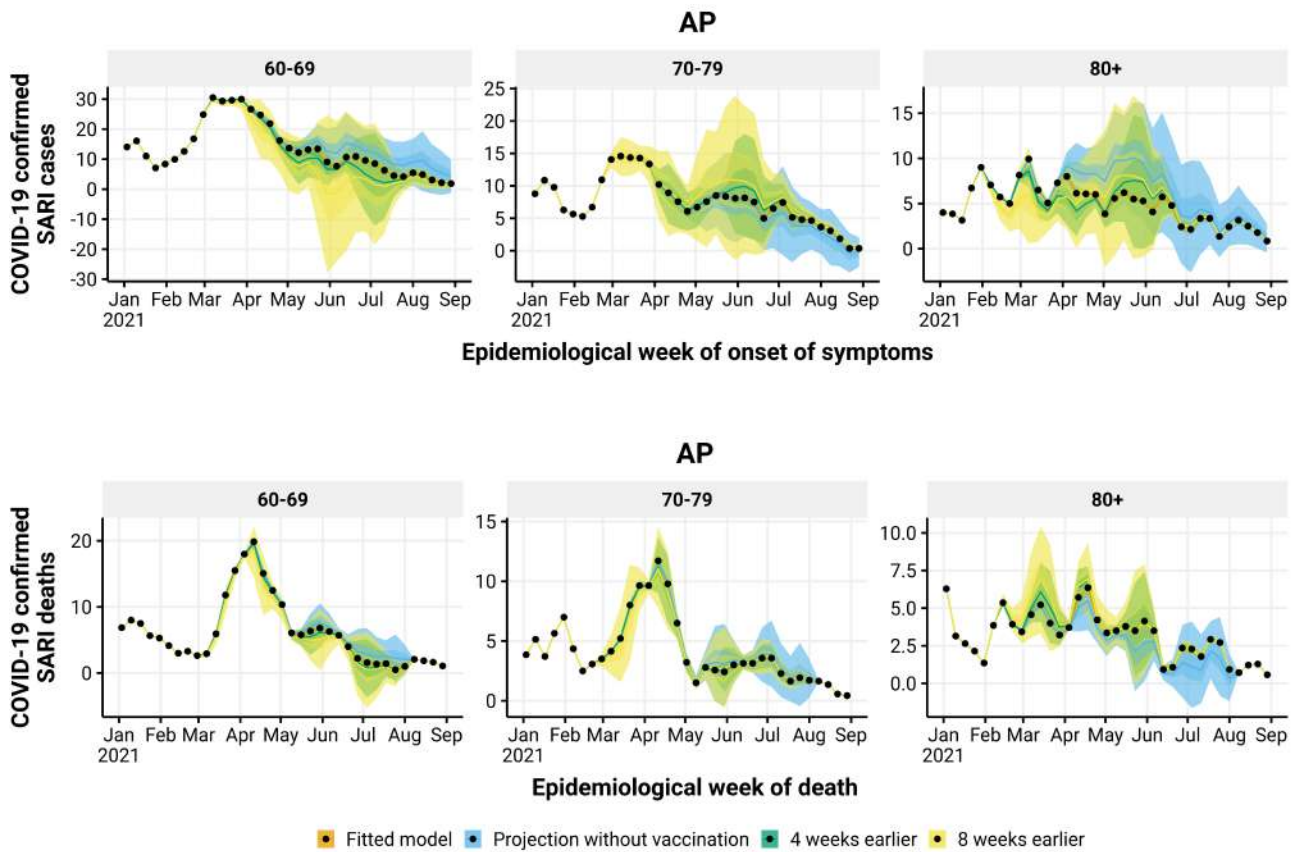


Figure 5: Estimated number of hospitalizations (top) and deaths (bottom) by epidemiological week with the realized (orange), no vaccination (blue), 4 (green) and 8 (yellow) weeks earlier vaccination rollout, by age group (panels), in AP state. The observed number of hospitalizations and deaths are given by the black points.

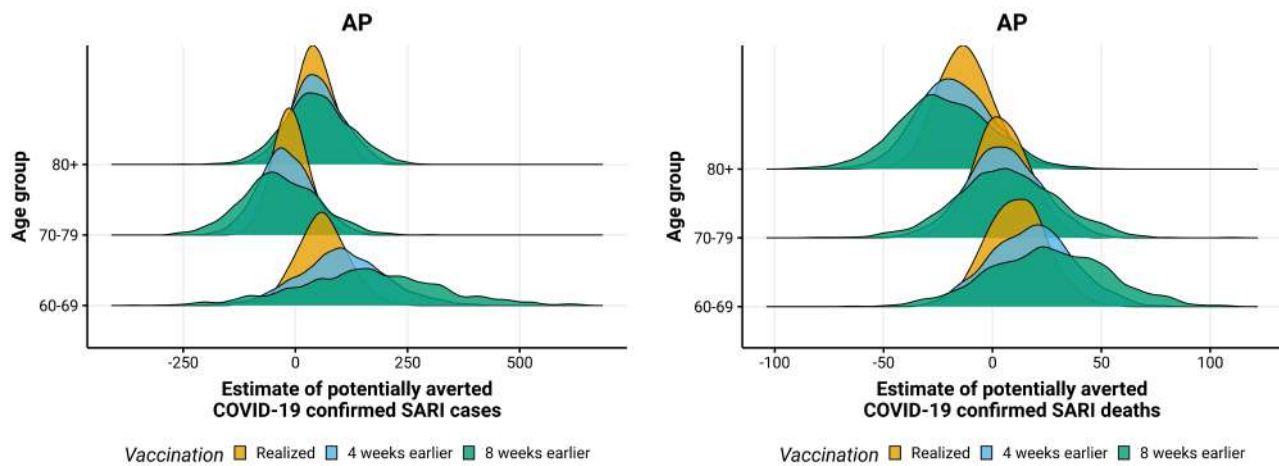


Figure 6: Posterior distribution of hospitalizations (left) and deaths (right) potentially averted by vaccination between 2021-01-01 and 2021-08-29 by age group, with the realized (orange), 4 (blue) and 8 weeks earlier (green) vaccination rollout in AP state.

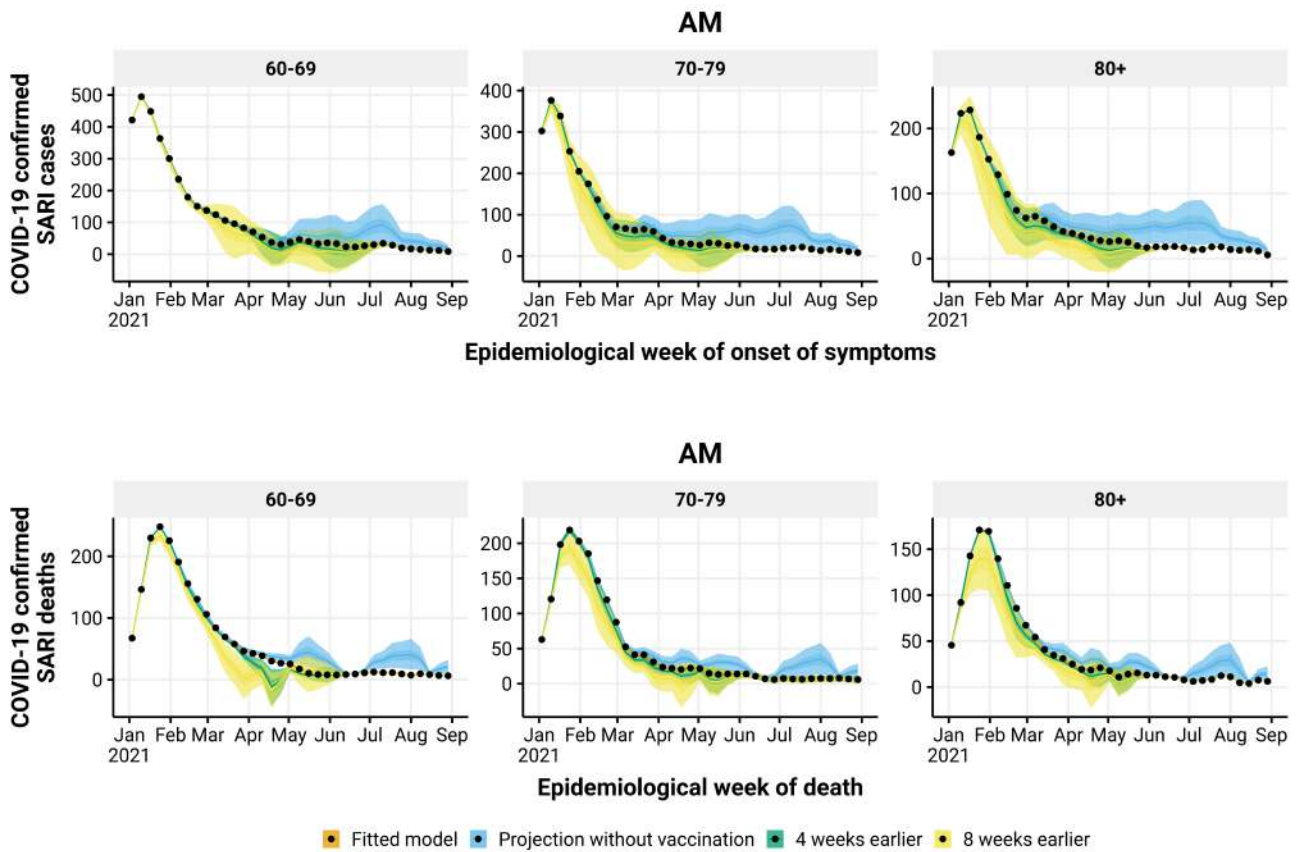


Figure 7: Estimated number of hospitalizations (top) and deaths (bottom) by epidemiological week with the realized (orange), no vaccination (blue), 4 (green) and 8 (yellow) weeks earlier vaccination rollout, by age group (panels), in AM state. The observed number of hospitalizations and deaths are given by the black points.

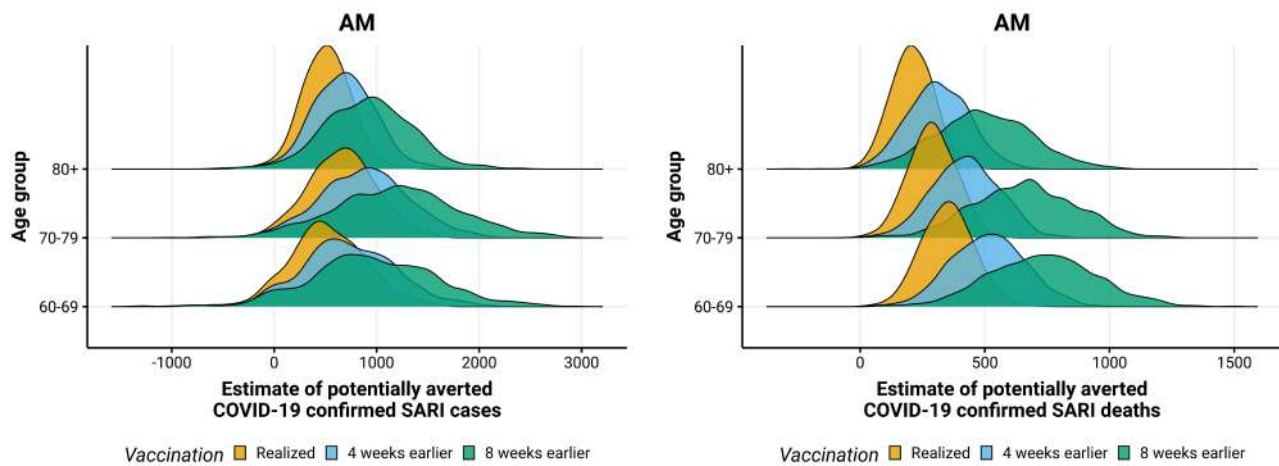


Figure 8: Posterior distribution of hospitalizations (left) and deaths (right) potentially averted by vaccination between 2021-01-01 and 2021-08-29 by age group, with the realized (orange), 4 (blue) and 8 weeks earlier (green) vaccination rollout in AM state.

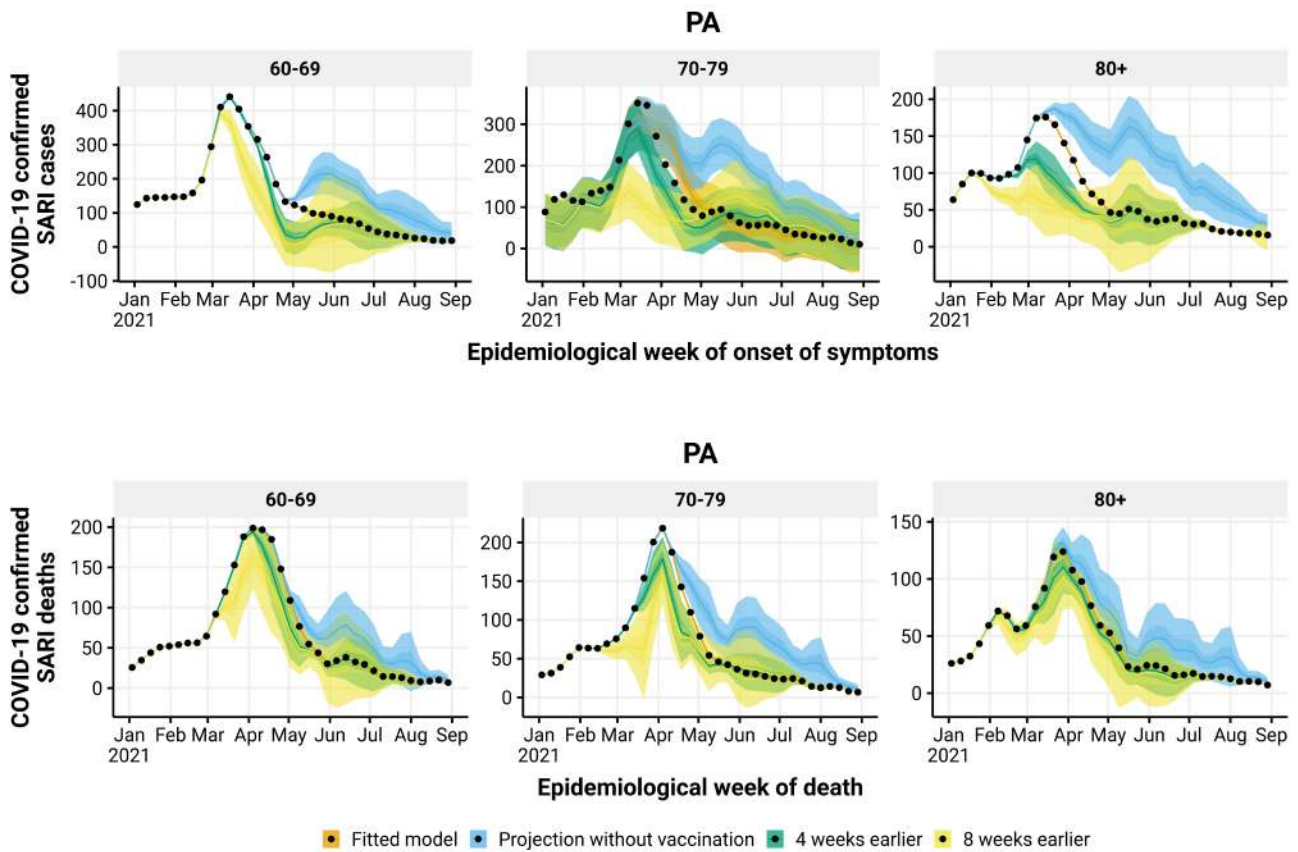


Figure 9: Estimated number of hospitalizations (top) and deaths (bottom) by epidemiological week with the realized (orange), no vaccination (blue), 4 (green) and 8 (yellow) weeks earlier vaccination rollout, by age group (panels), in PA state. The observed number of hospitalizations and deaths are given by the black points.

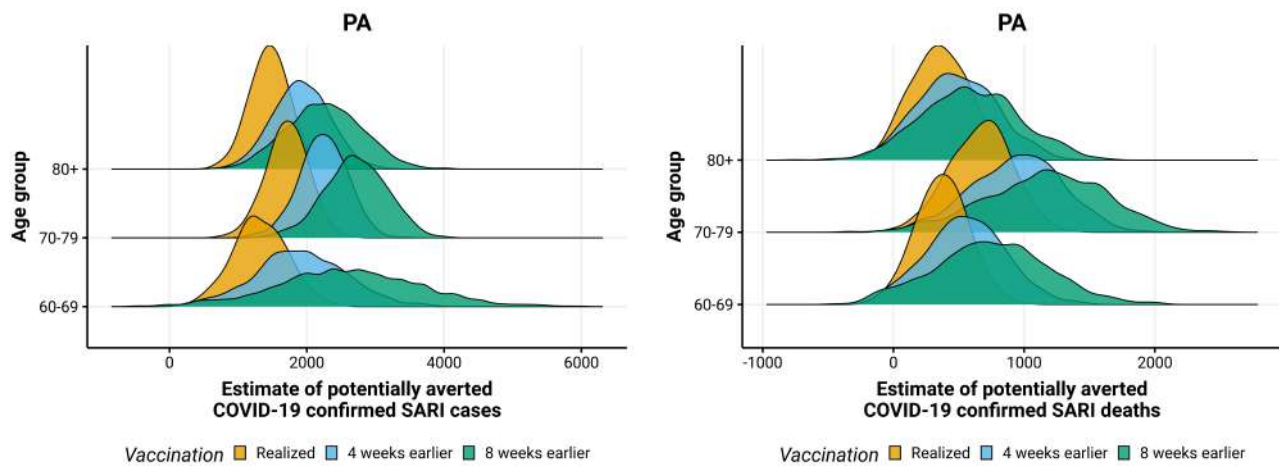


Figure 10: Posterior distribution of hospitalizations (left) and deaths (right) potentially averted by vaccination between 2021-01-01 and 2021-08-29 by age group, with the realized (orange), 4 (blue) and 8 weeks earlier (green) vaccination rollout in PA state.

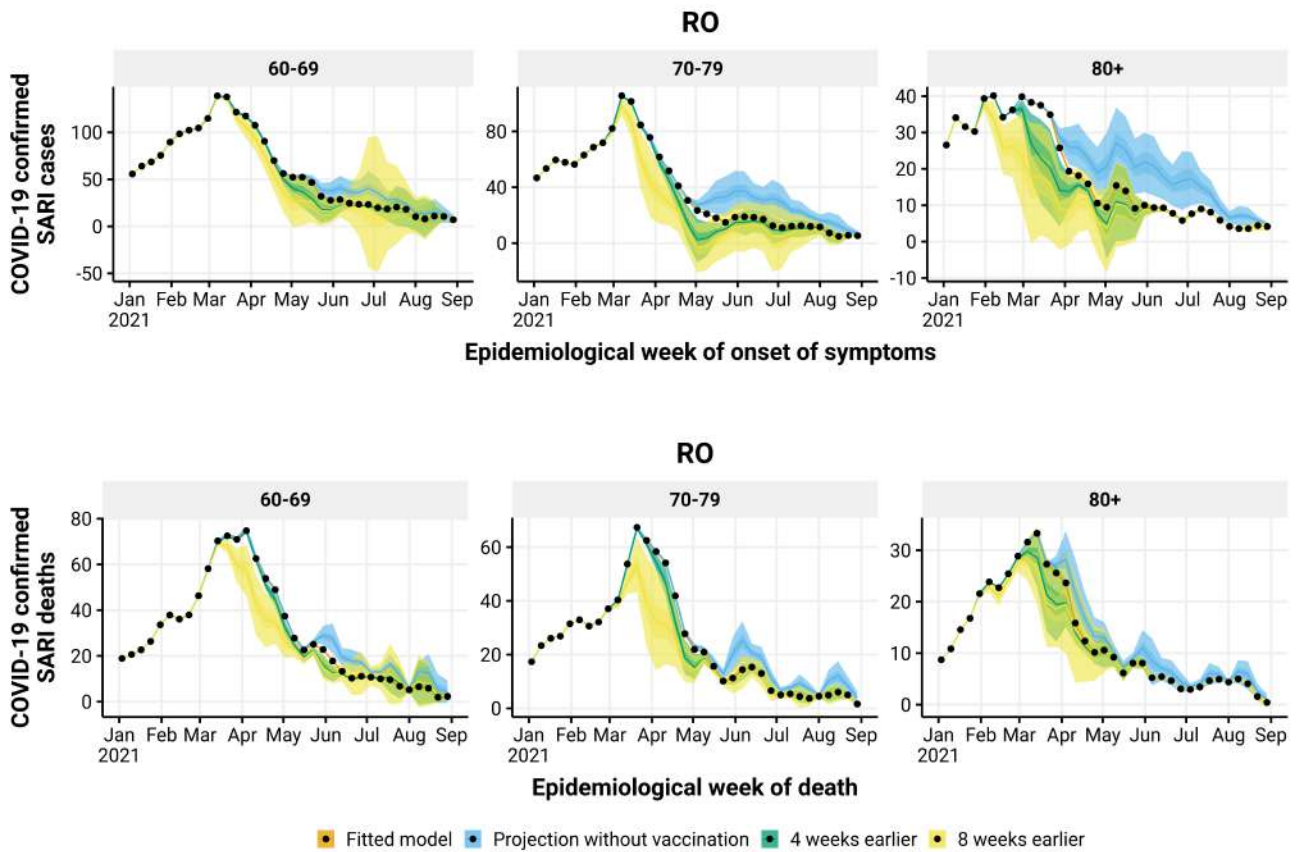


Figure 11: Estimated number of hospitalizations (top) and deaths (bottom) by epidemiological week with the realized (orange), no vaccination (blue), 4 (green) and 8 (yellow) weeks earlier vaccination rollout, by age group (panels), in RO state. The observed number of hospitalizations and deaths are given by the black points.

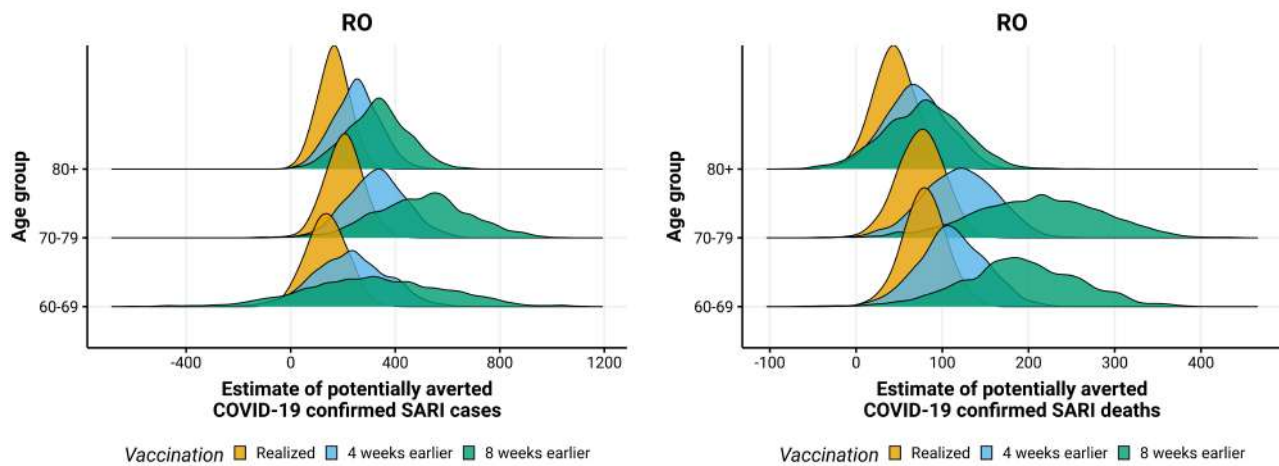


Figure 12: Posterior distribution of hospitalizations (left) and deaths (right) potentially averted by vaccination between 2021-01-01 and 2021-08-29 by age group, with the realized (orange), 4 (blue) and 8 weeks earlier (green) vaccination rollout in RO state.

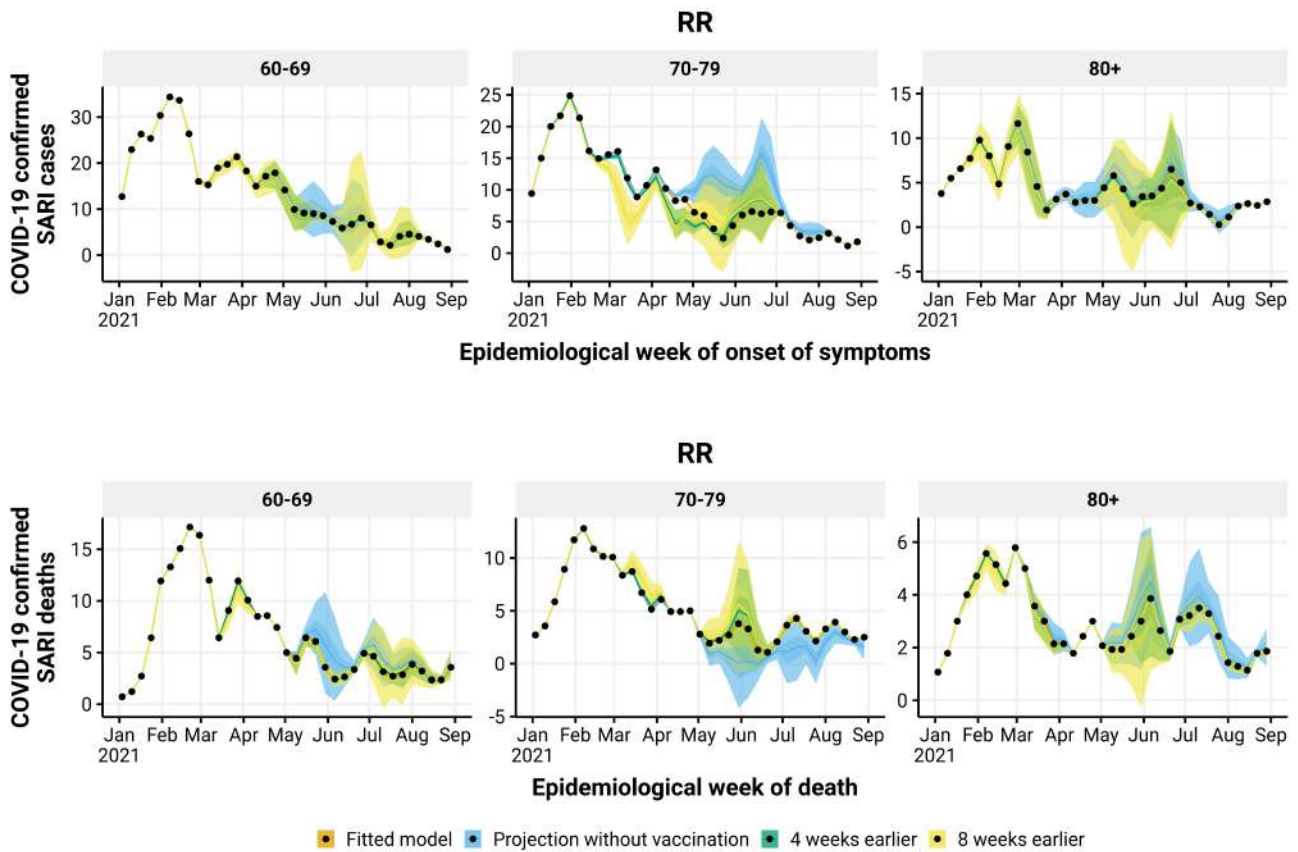


Figure 13: Estimated number of hospitalizations (top) and deaths (bottom) by epidemiological week with the realized (orange), no vaccination (blue), 4 (green) and 8 (yellow) weeks earlier vaccination rollout, by age group (panels), in RR state. The observed number of hospitalizations and deaths are given by the black points.

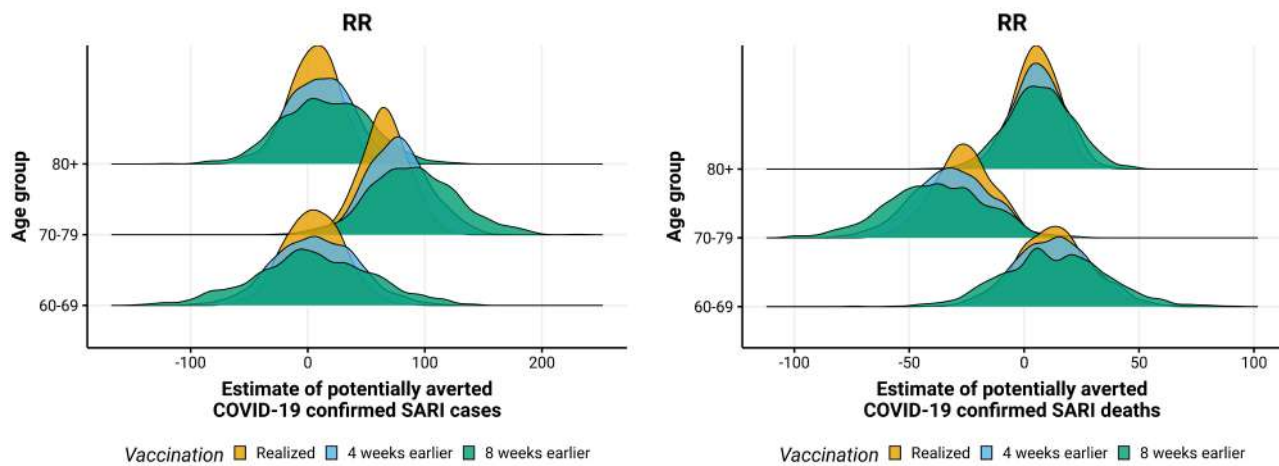


Figure 14: Posterior distribution of hospitalizations (left) and deaths (right) potentially averted by vaccination between 2021-01-01 and 2021-08-29 by age group, with the realized (orange), 4 (blue) and 8 weeks earlier (green) vaccination rollout in RR state.

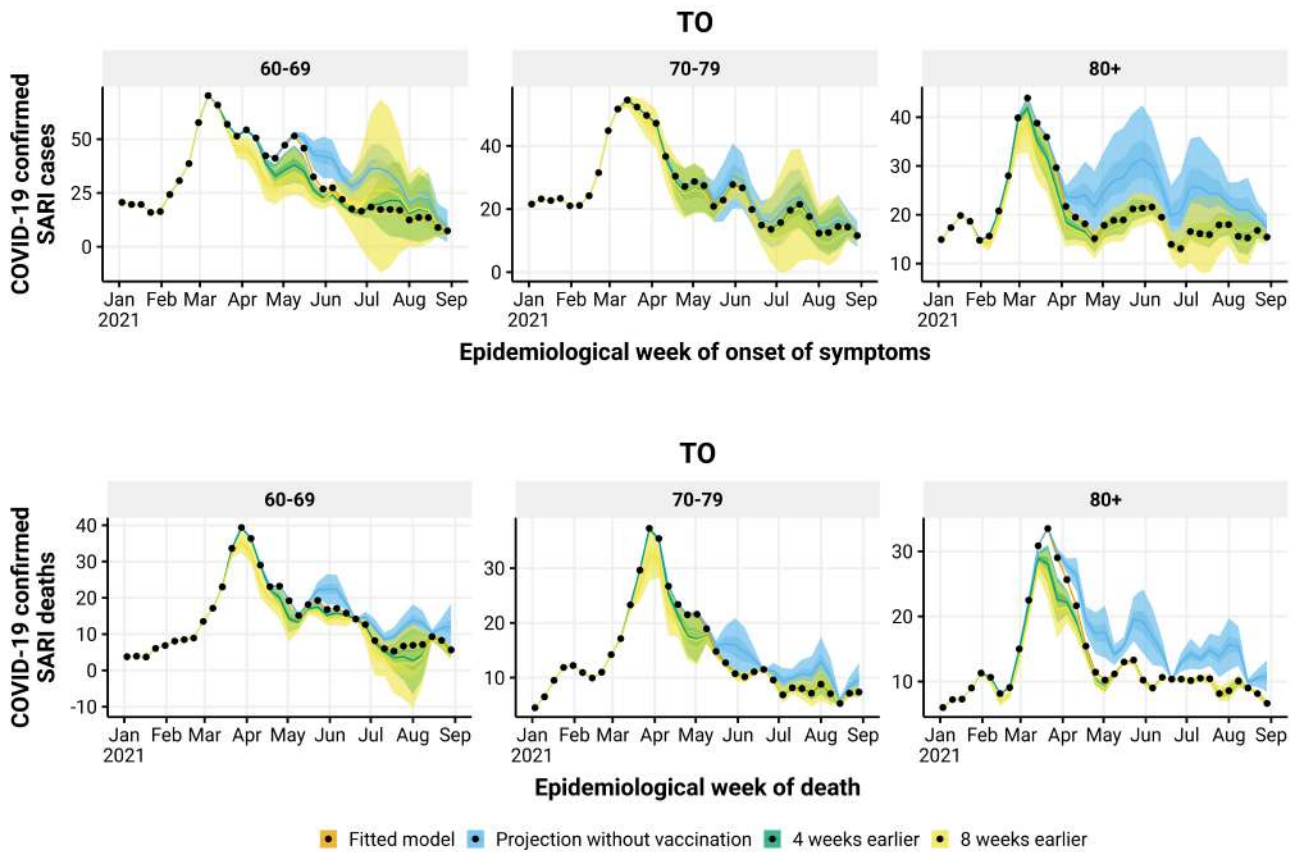


Figure 15: Estimated number of hospitalizations (top) and deaths (bottom) by epidemiological week with the realized (orange), no vaccination (blue), 4 (green) and 8 (yellow) weeks earlier vaccination rollout, by age group (panels), in TO state. The observed number of hospitalizations and deaths are given by the black points.

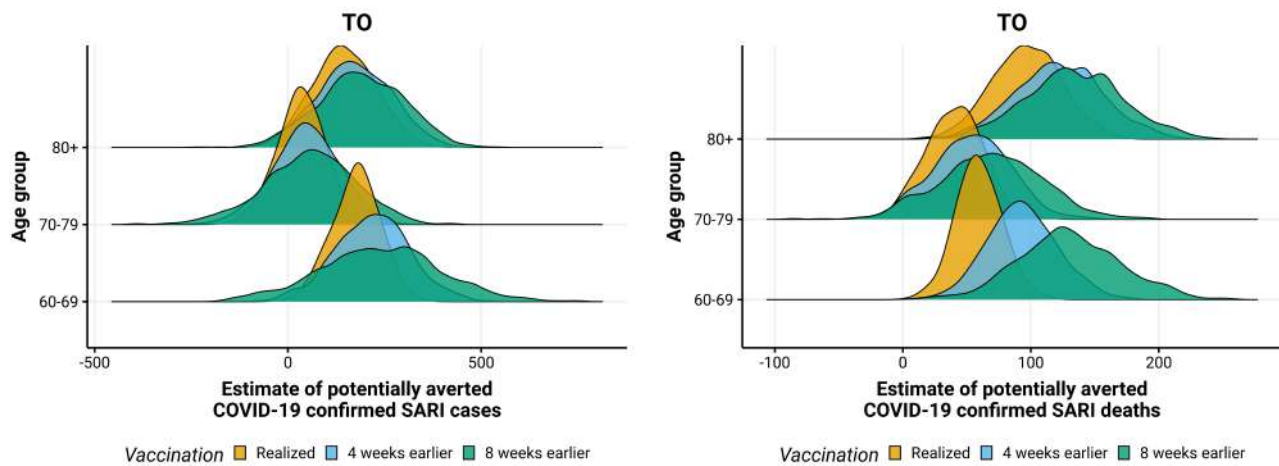


Figure 16: Posterior distribution of hospitalizations (left) and deaths (right) potentially averted by vaccination between 2021-01-01 and 2021-08-29 by age group, with the realized (orange), 4 (blue) and 8 weeks earlier (green) vaccination rollout in TO state.

1.2 Northeast Region

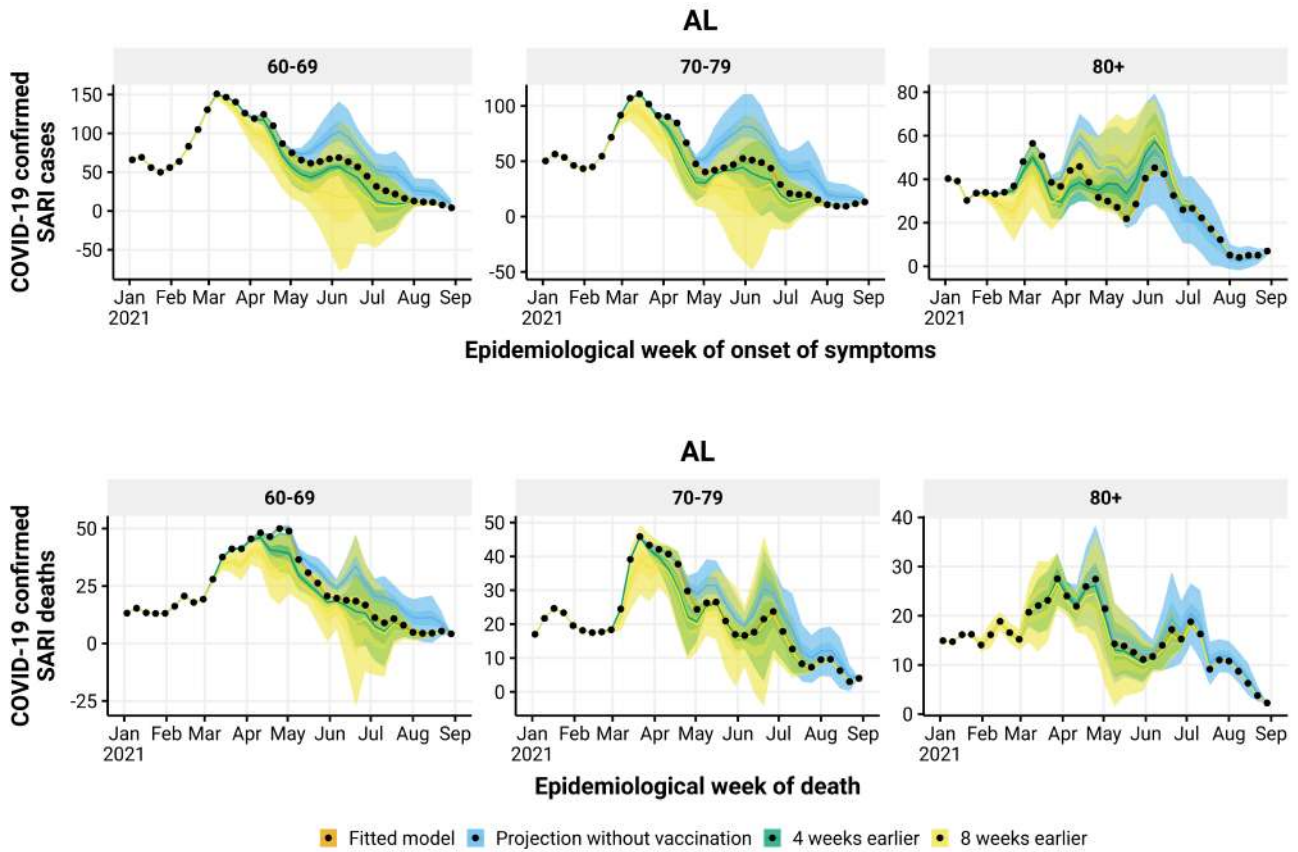


Figure 17: Estimated number of hospitalizations (top) and deaths (bottom) by epidemiological week with the realized (orange), no vaccination (blue), 4 (green) and 8 (yellow) weeks earlier vaccination rollout, by age group (panels), in AL state. The observed number of hospitalizations and deaths are given by the black points.

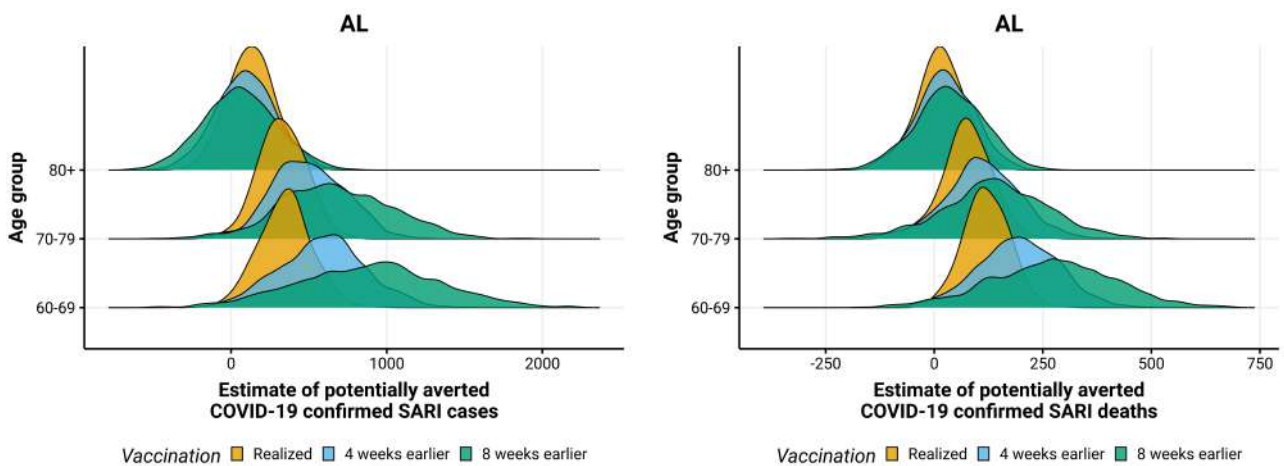


Figure 18: Posterior distribution of hospitalizations (left) and deaths (right) potentially averted by vaccination between 2021-01-01 and 2021-08-29 by age group, with the realized (orange), 4 (blue) and 8 weeks earlier (green) vaccination rollout in AL state.

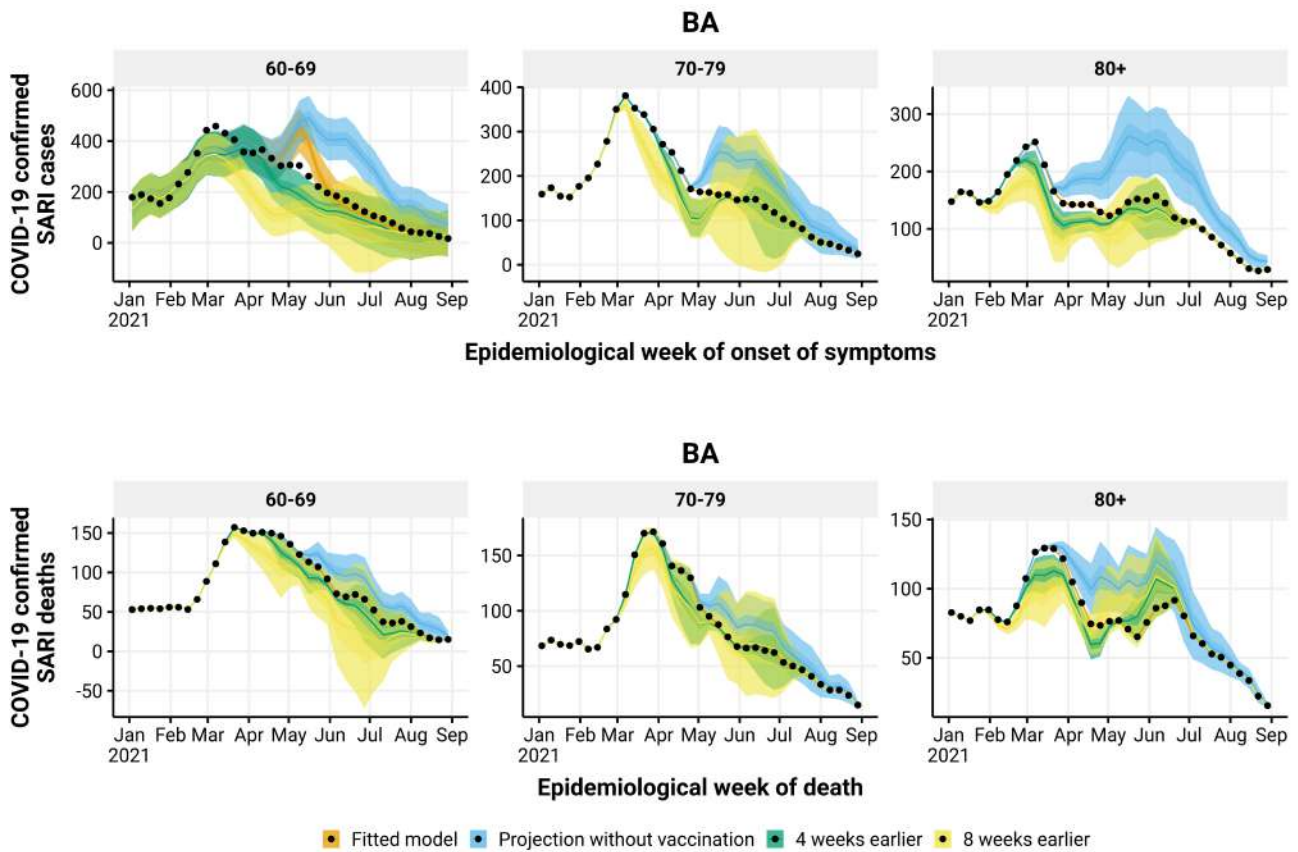


Figure 19: Estimated number of hospitalizations (top) and deaths (bottom) by epidemiological week with the realized (orange), no vaccination (blue), 4 (green) and 8 (yellow) weeks earlier vaccination rollout, by age group (panels), in BA state. The observed number of hospitalizations and deaths are given by the black points.

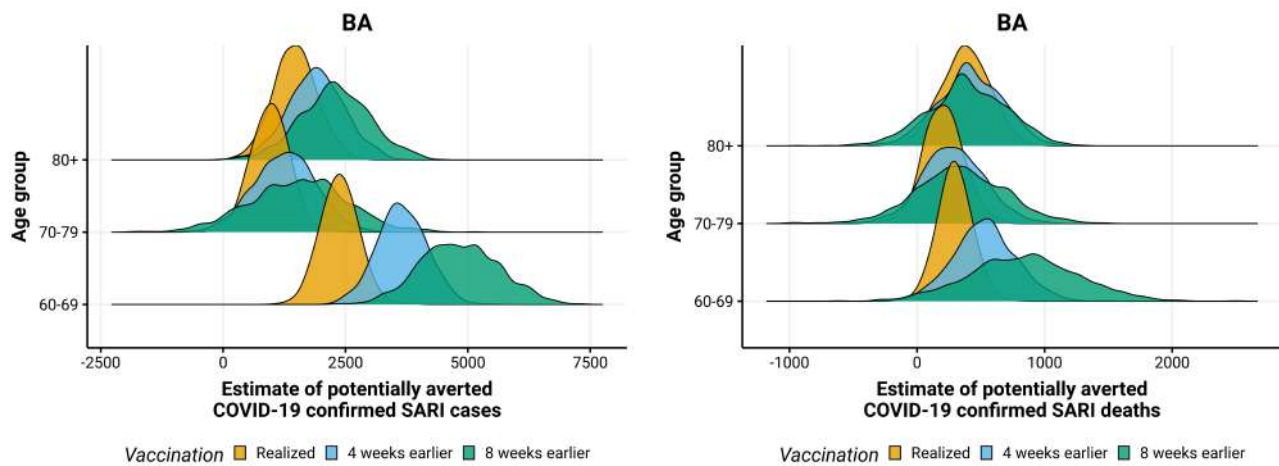


Figure 20: Posterior distribution of hospitalizations (left) and deaths (right) potentially averted by vaccination between 2021-01-01 and 2021-08-29 by age group, with the realized (orange), 4 (blue) and 8 weeks earlier (green) vaccination rollout in BA state.

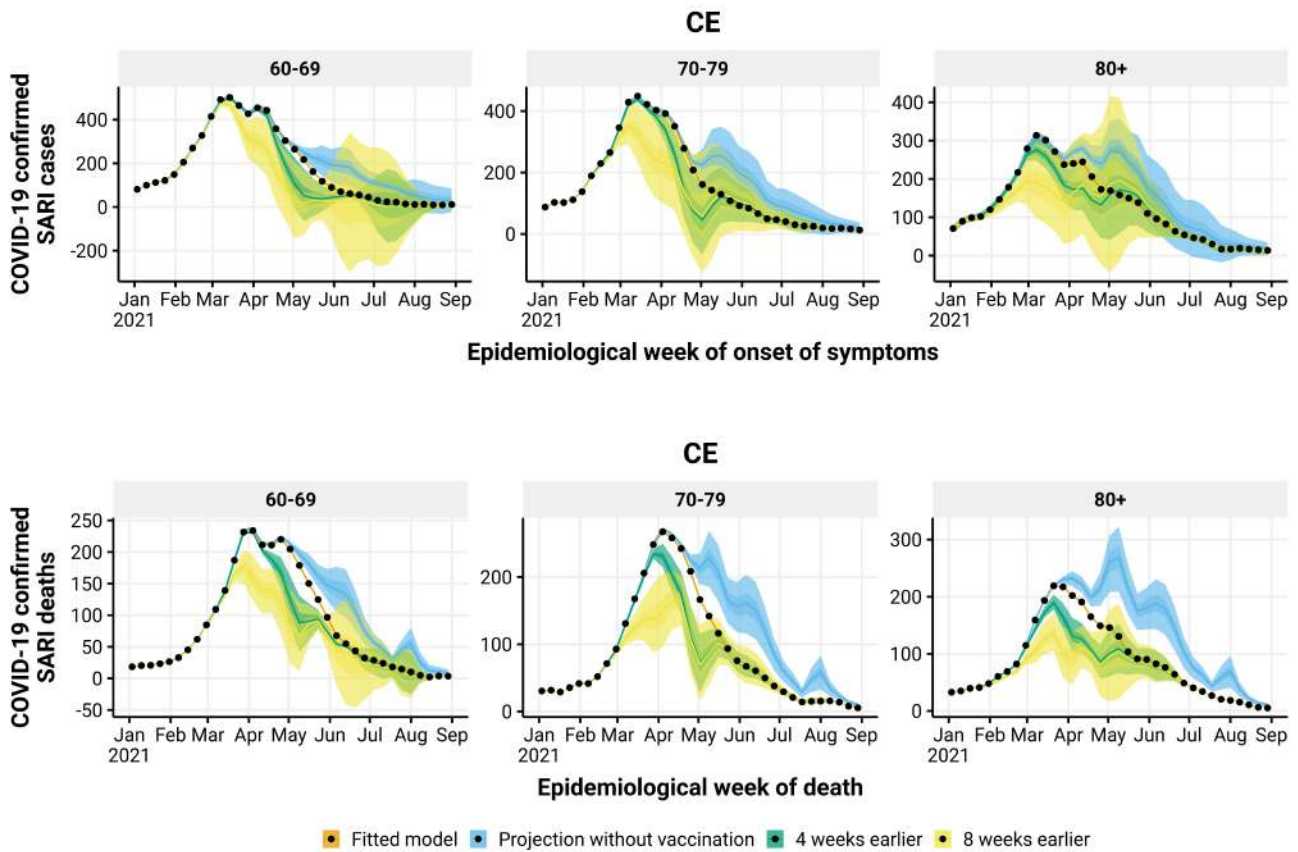


Figure 21: Estimated number of hospitalizations (top) and deaths (bottom) by epidemiological week with the realized (orange), no vaccination (blue), 4 (green) and 8 (yellow) weeks earlier vaccination rollout, by age group (panels), in CE state. The observed number of hospitalizations and deaths are given by the black points.

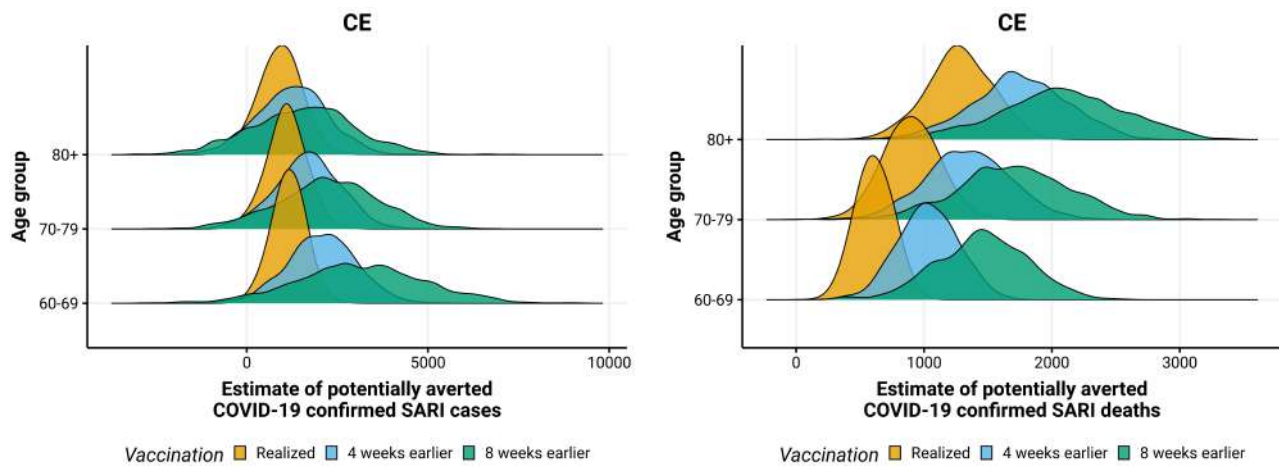


Figure 22: Posterior distribution of hospitalizations (left) and deaths (right) potentially averted by vaccination between 2021-01-01 and 2021-08-29 by age group, with the realized (orange), 4 (blue) and 8 weeks earlier (green) vaccination rollout in CE state.

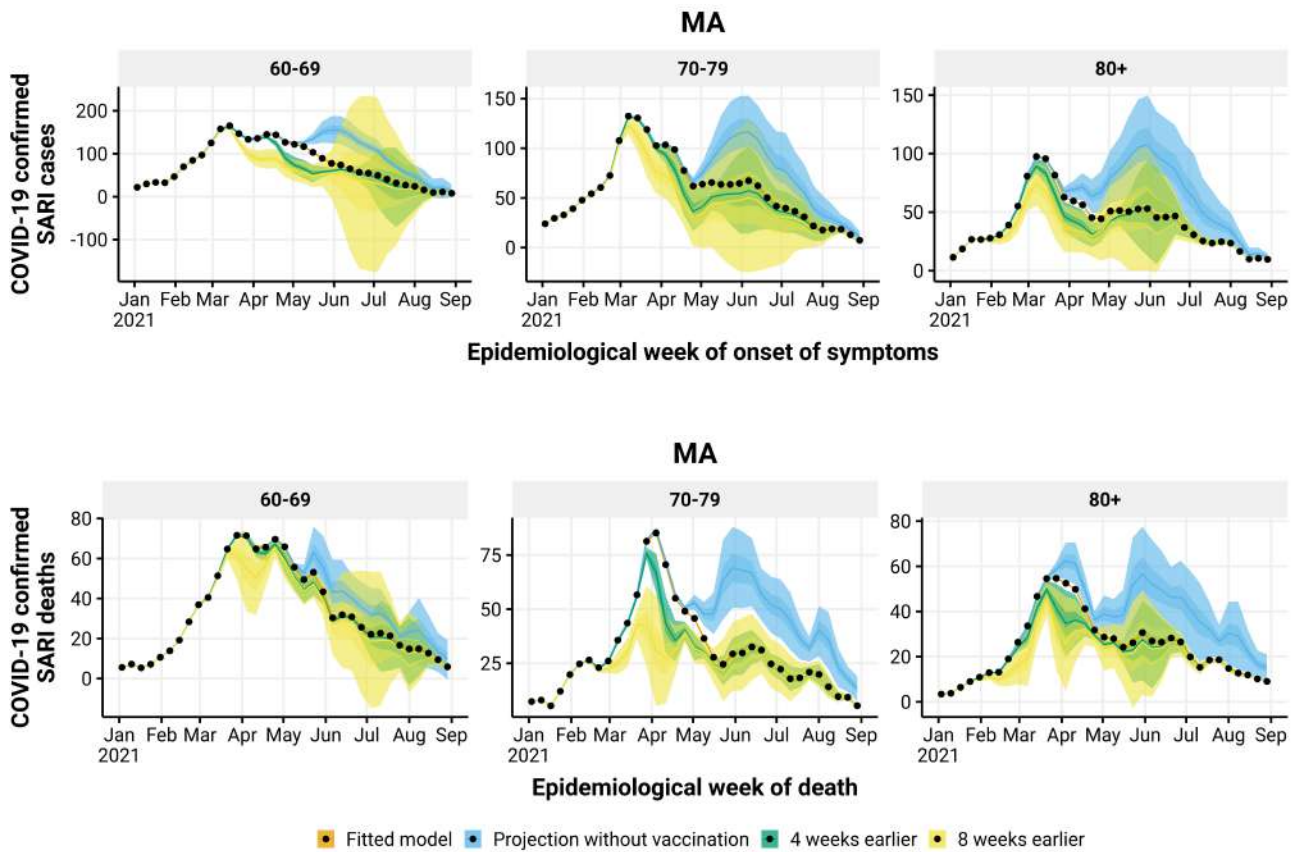


Figure 23: Estimated number of hospitalizations (top) and deaths (bottom) by epidemiological week with the realized (orange), no vaccination (blue), 4 (green) and 8 (yellow) weeks earlier vaccination rollout, by age group (panels), in MA state. The observed number of hospitalizations and deaths are given by the black points.

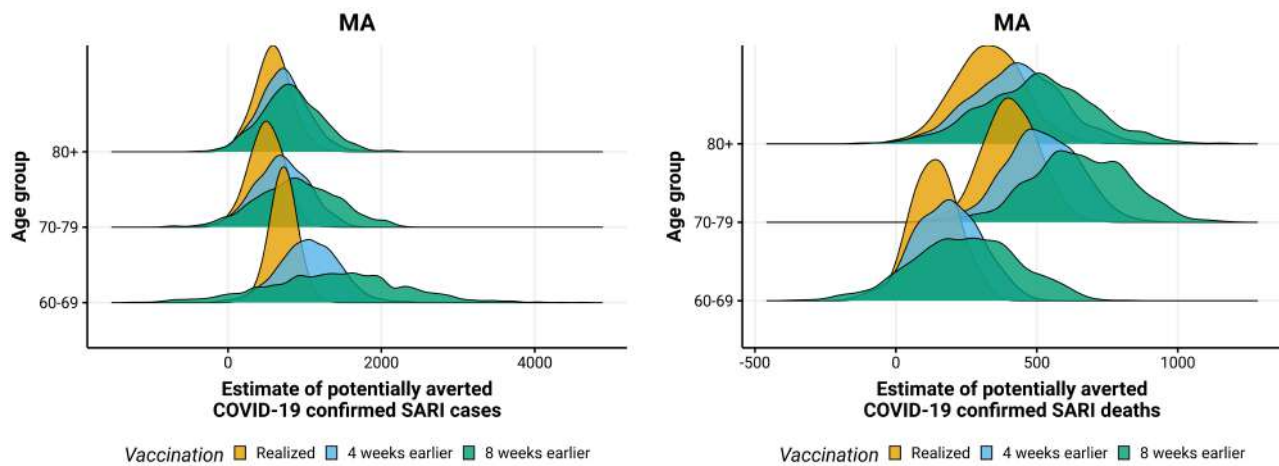


Figure 24: Posterior distribution of hospitalizations (left) and deaths (right) potentially averted by vaccination between 2021-01-01 and 2021-08-29 by age group, with the realized (orange), 4 (blue) and 8 weeks earlier (green) vaccination rollout in MA state.

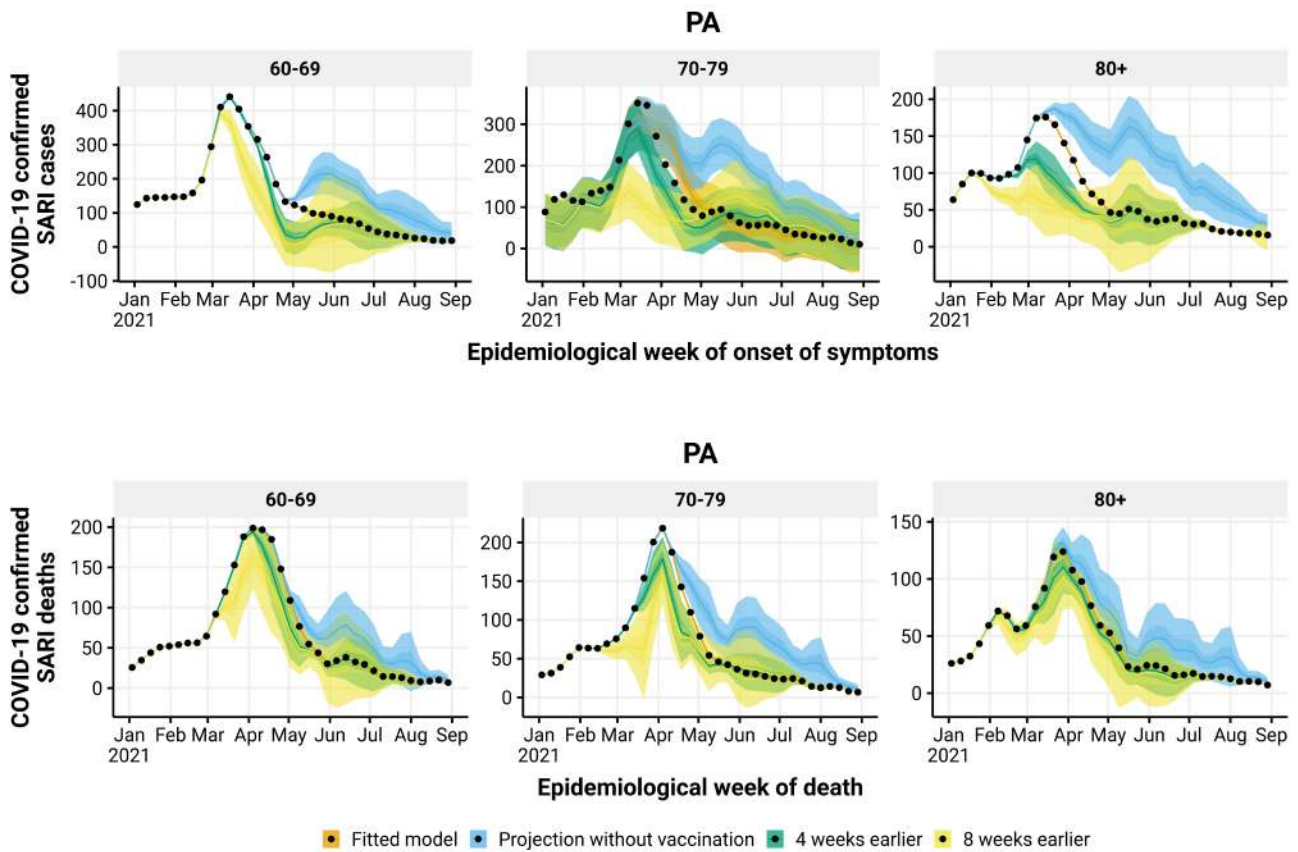


Figure 25: Estimated number of hospitalizations (top) and deaths (bottom) by epidemiological week with the realized (orange), no vaccination (blue), 4 (green) and 8 (yellow) weeks earlier vaccination rollout, by age group (panels), in PA state. The observed number of hospitalizations and deaths are given by the black points.

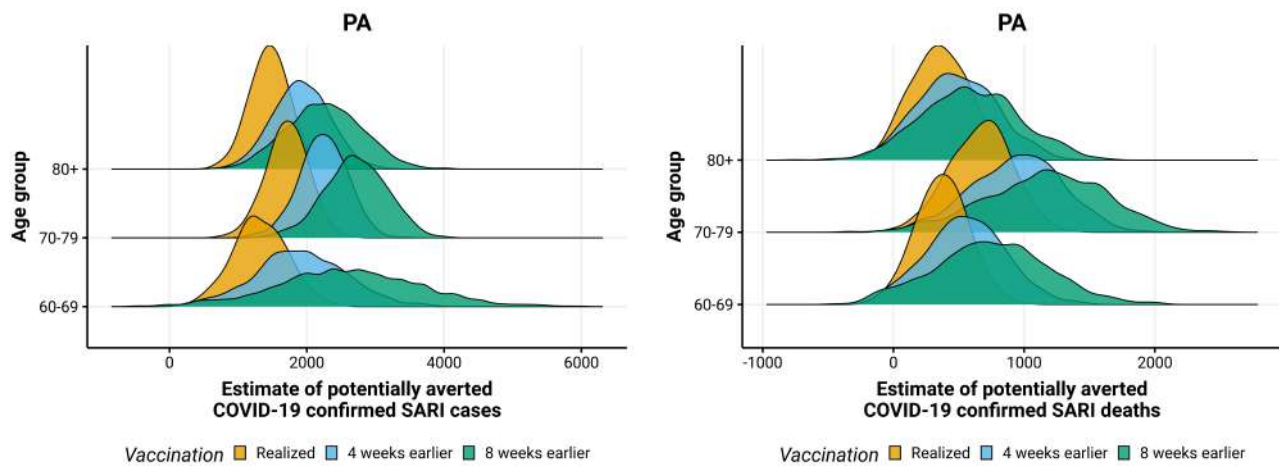


Figure 26: Posterior distribution of hospitalizations (left) and deaths (right) potentially averted by vaccination between 2021-01-01 and 2021-08-29 by age group, with the realized (orange), 4 (blue) and 8 weeks earlier (green) vaccination rollout in PA state.

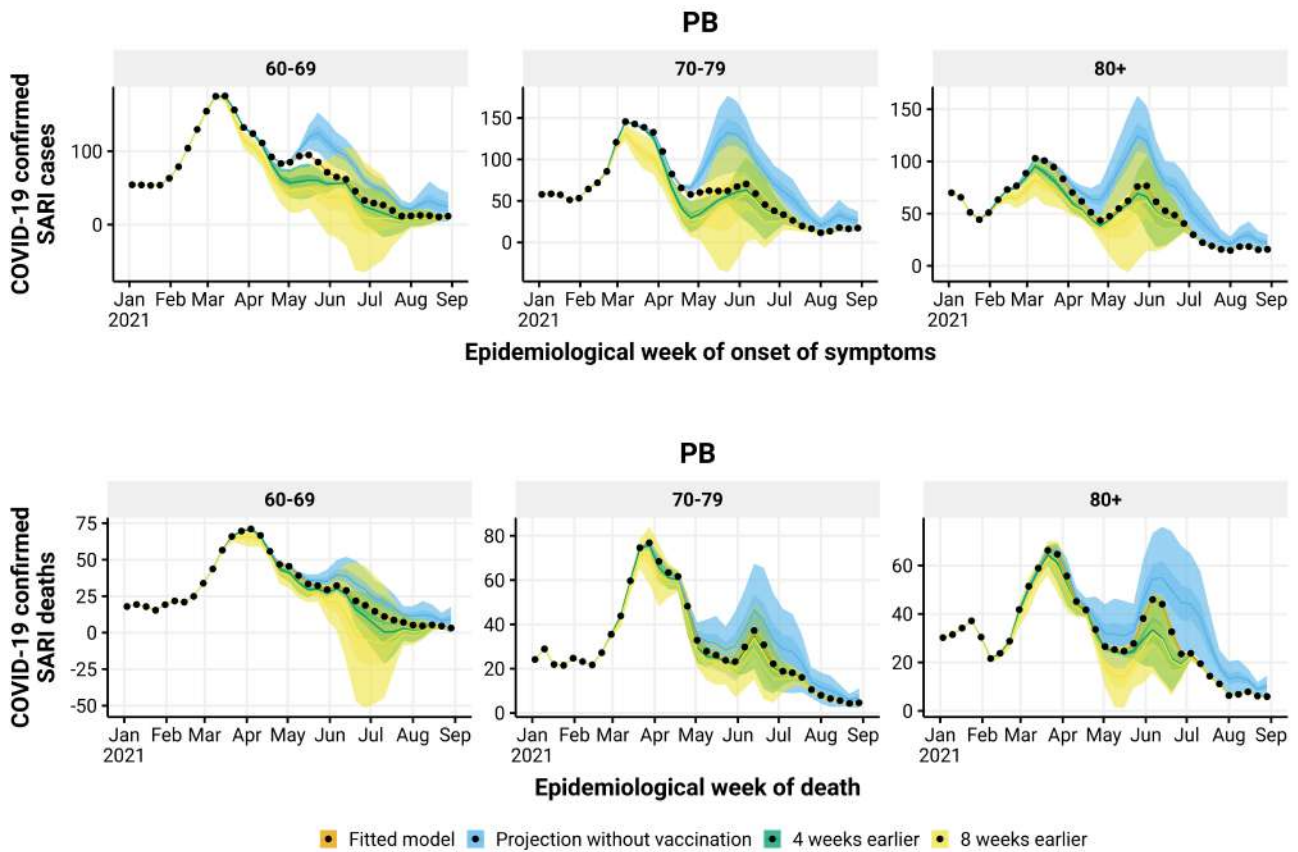


Figure 27: Estimated number of hospitalizations (top) and deaths (bottom) by epidemiological week with the realized (orange), no vaccination (blue), 4 (green) and 8 (yellow) weeks earlier vaccination rollout, by age group (panels), in PB state. The observed number of hospitalizations and deaths are given by the black points.

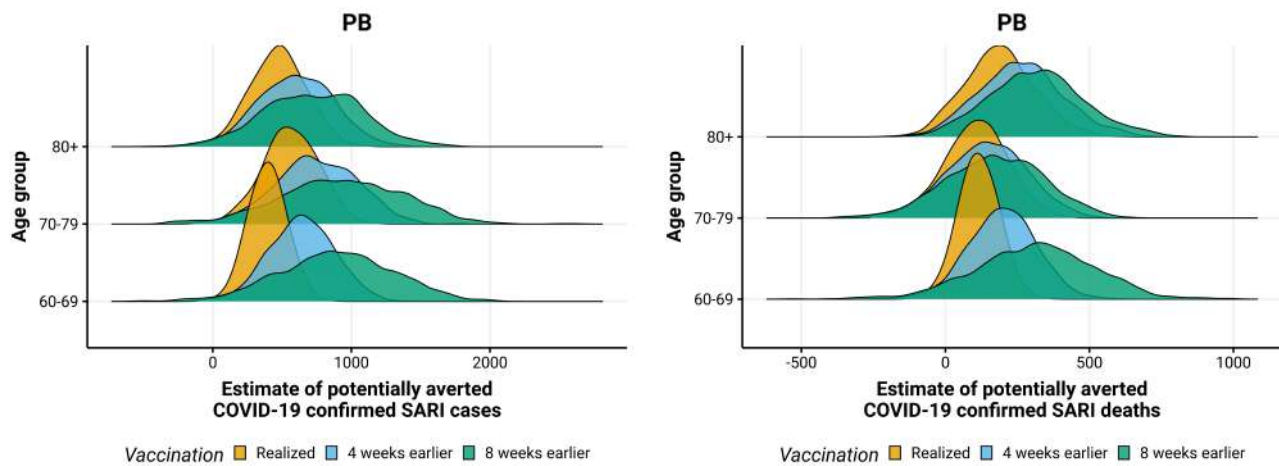


Figure 28: Posterior distribution of hospitalizations (left) and deaths (right) potentially averted by vaccination between 2021-01-01 and 2021-08-29 by age group, with the realized (orange), 4 (blue) and 8 weeks earlier (green) vaccination rollout in PB state.

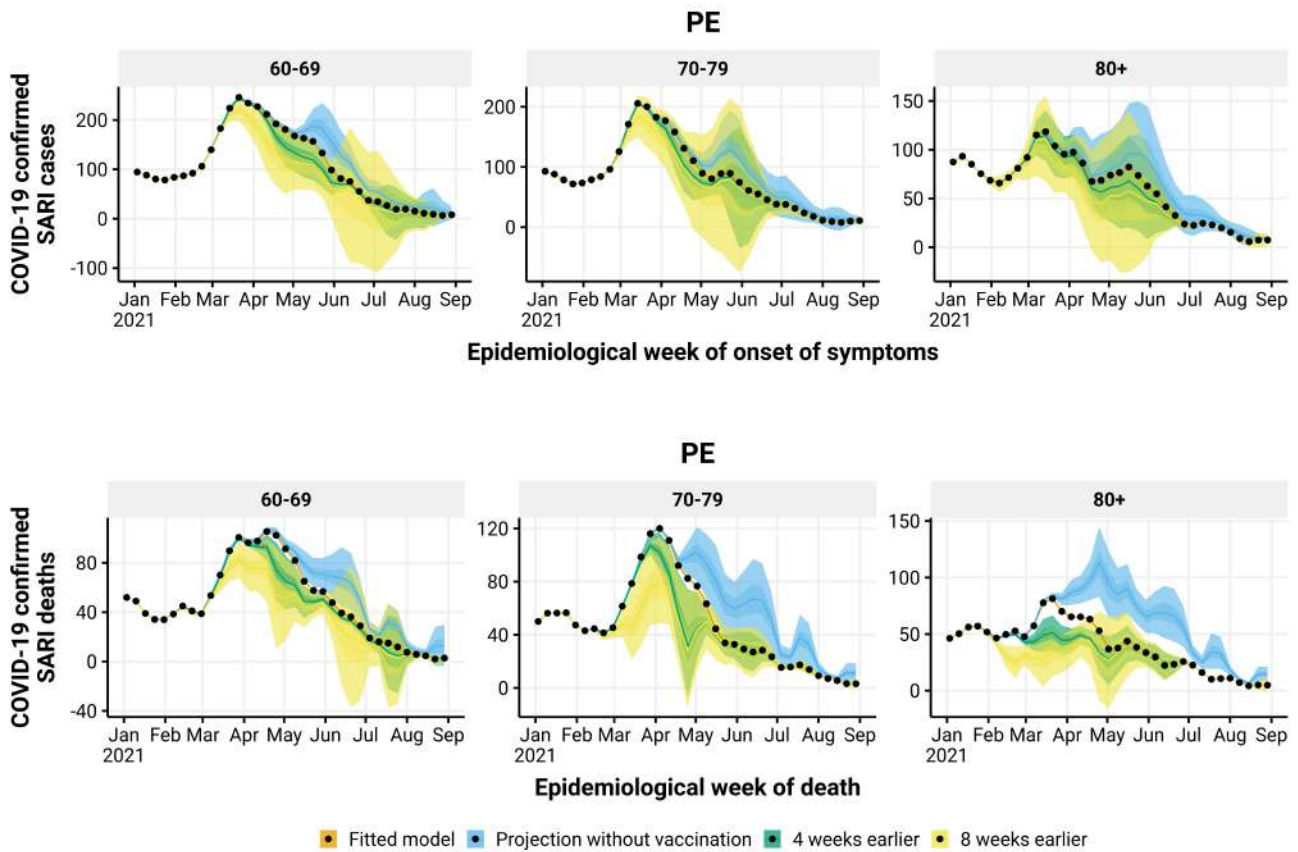


Figure 29: Estimated number of hospitalizations (top) and deaths (bottom) by epidemiological week with the realized (orange), no vaccination (blue), 4 (green) and 8 (yellow) weeks earlier vaccination rollout, by age group (panels), in PE state. The observed number of hospitalizations and deaths are given by the black points.

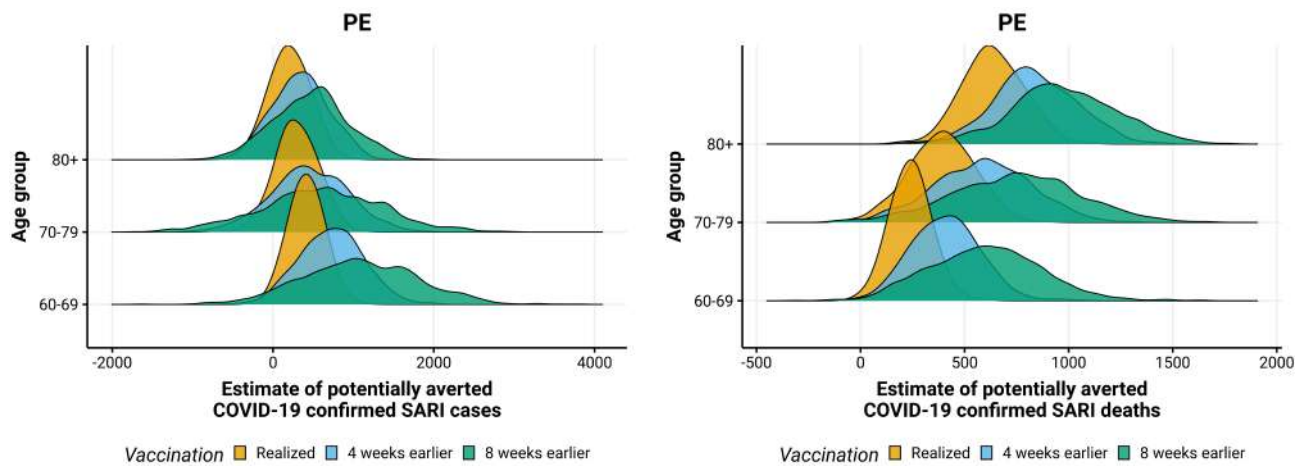


Figure 30: Posterior distribution of hospitalizations (left) and deaths (right) potentially averted by vaccination between 2021-01-01 and 2021-08-29 by age group, with the realized (orange), 4 (blue) and 8 weeks earlier (green) vaccination rollout in PE state.

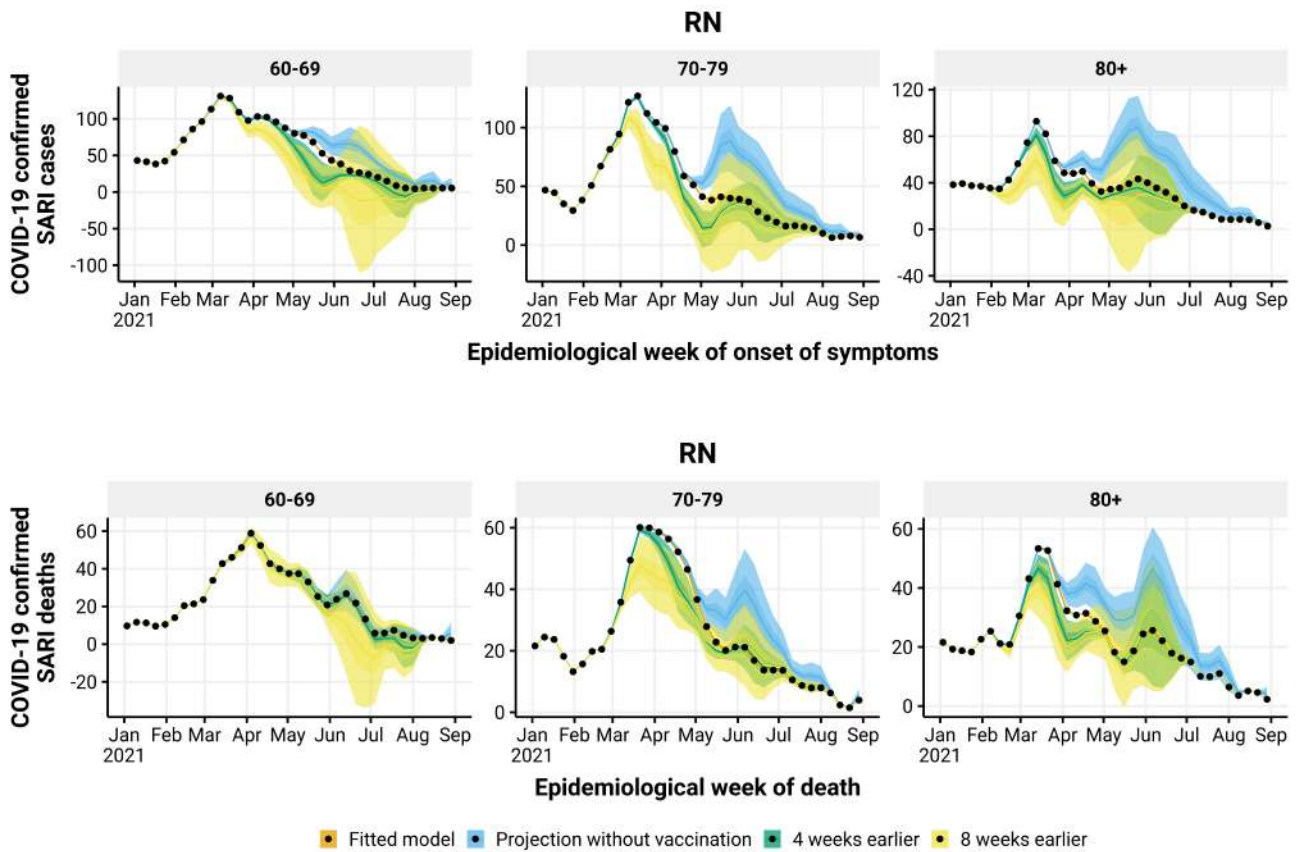


Figure 31: Estimated number of hospitalizations (top) and deaths (bottom) by epidemiological week with the realized (orange), no vaccination (blue), 4 (green) and 8 (yellow) weeks earlier vaccination rollout, by age group (panels), in RN state. The observed number of hospitalizations and deaths are given by the black points.

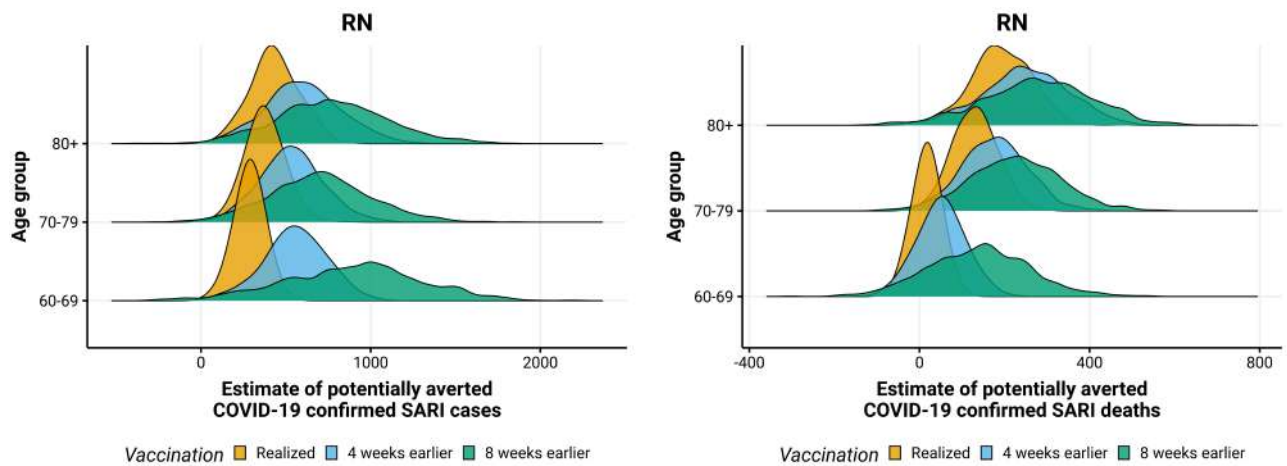


Figure 32: Posterior distribution of hospitalizations (left) and deaths (right) potentially averted by vaccination between 2021-01-01 and 2021-08-29 by age group, with the realized (orange), 4 (blue) and 8 weeks earlier (green) vaccination rollout in RN state.

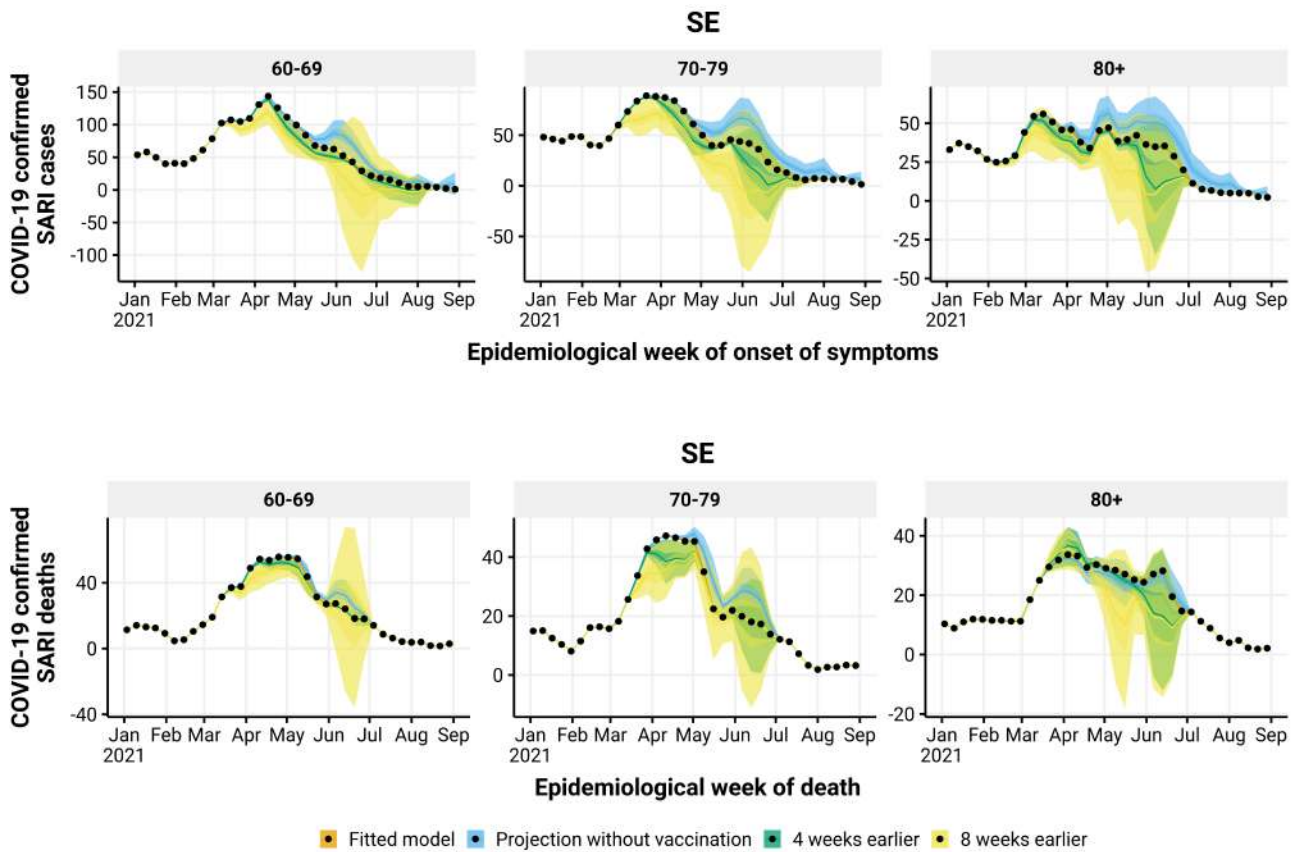


Figure 33: Estimated number of hospitalizations (top) and deaths (bottom) by epidemiological week with the realized (orange), no vaccination (blue), 4 (green) and 8 (yellow) weeks earlier vaccination rollout, by age group (panels), in SE state. The observed number of hospitalizations and deaths are given by the black points.

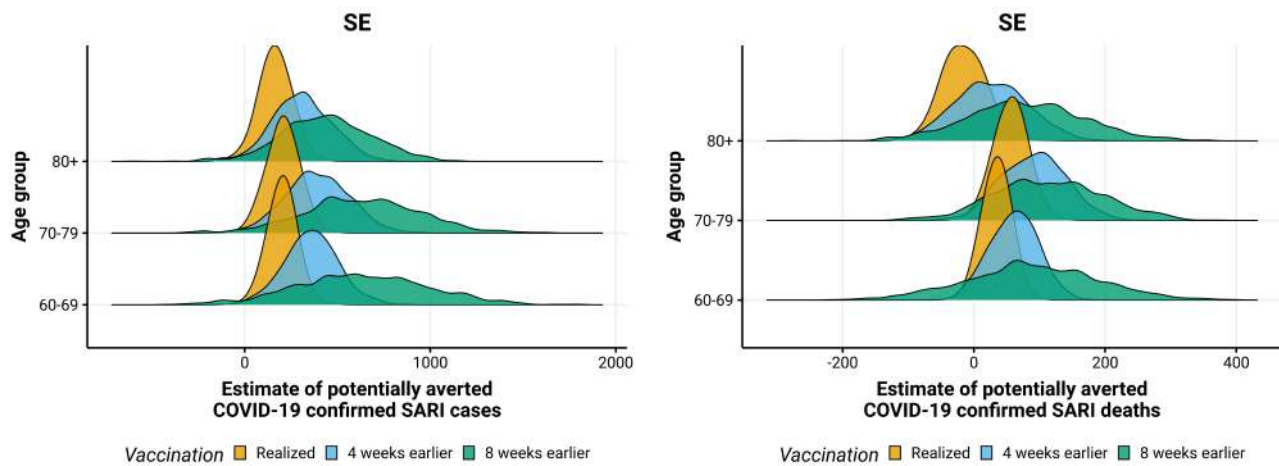


Figure 34: Posterior distribution of hospitalizations (left) and deaths (right) potentially averted by vaccination between 2021-01-01 and 2021-08-29 by age group, with the realized (orange), 4 (blue) and 8 weeks earlier (green) vaccination rollout in SE state.

1.3 Southeast Region

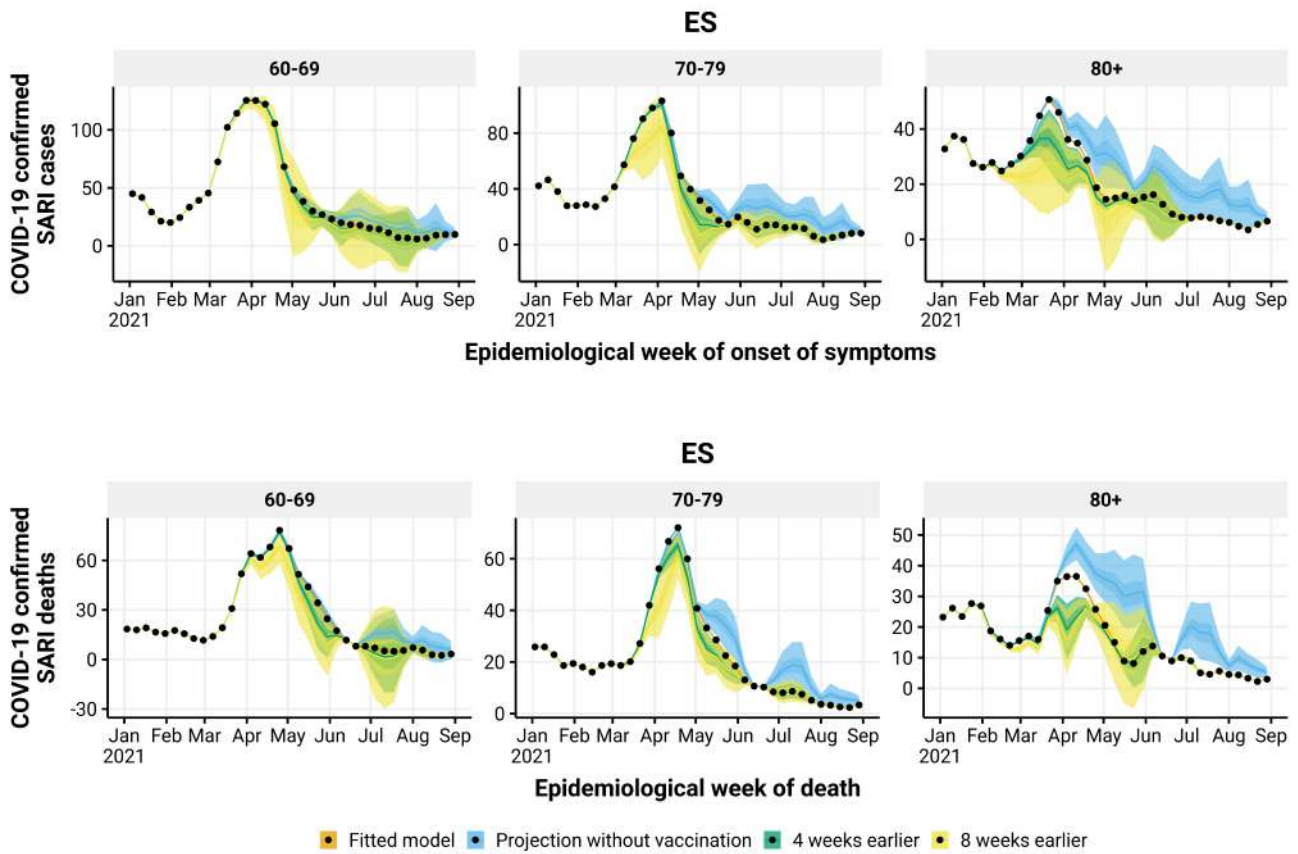


Figure 35: Estimated number of hospitalizations (top) and deaths (bottom) by epidemiological week with the realized (orange), no vaccination (blue), 4 (green) and 8 (yellow) weeks earlier vaccination rollout, by age group (panels), in ES state. The observed number of hospitalizations and deaths are given by the black points.

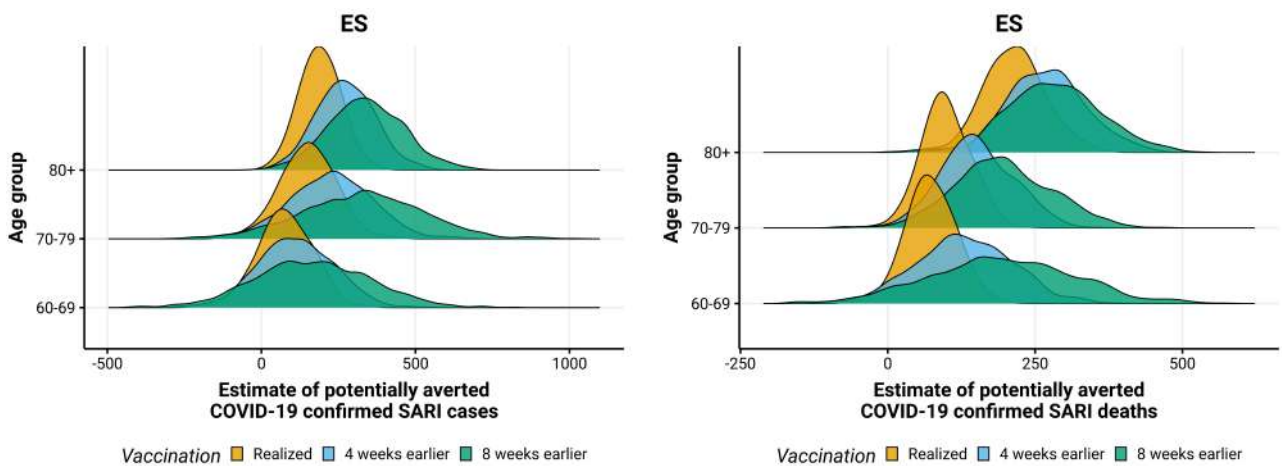


Figure 36: Posterior distribution of hospitalizations (left) and deaths (right) potentially averted by vaccination between 2021-01-01 and 2021-08-29 by age group, with the realized (orange), 4 (blue) and 8 weeks earlier (green) vaccination rollout in ES state.

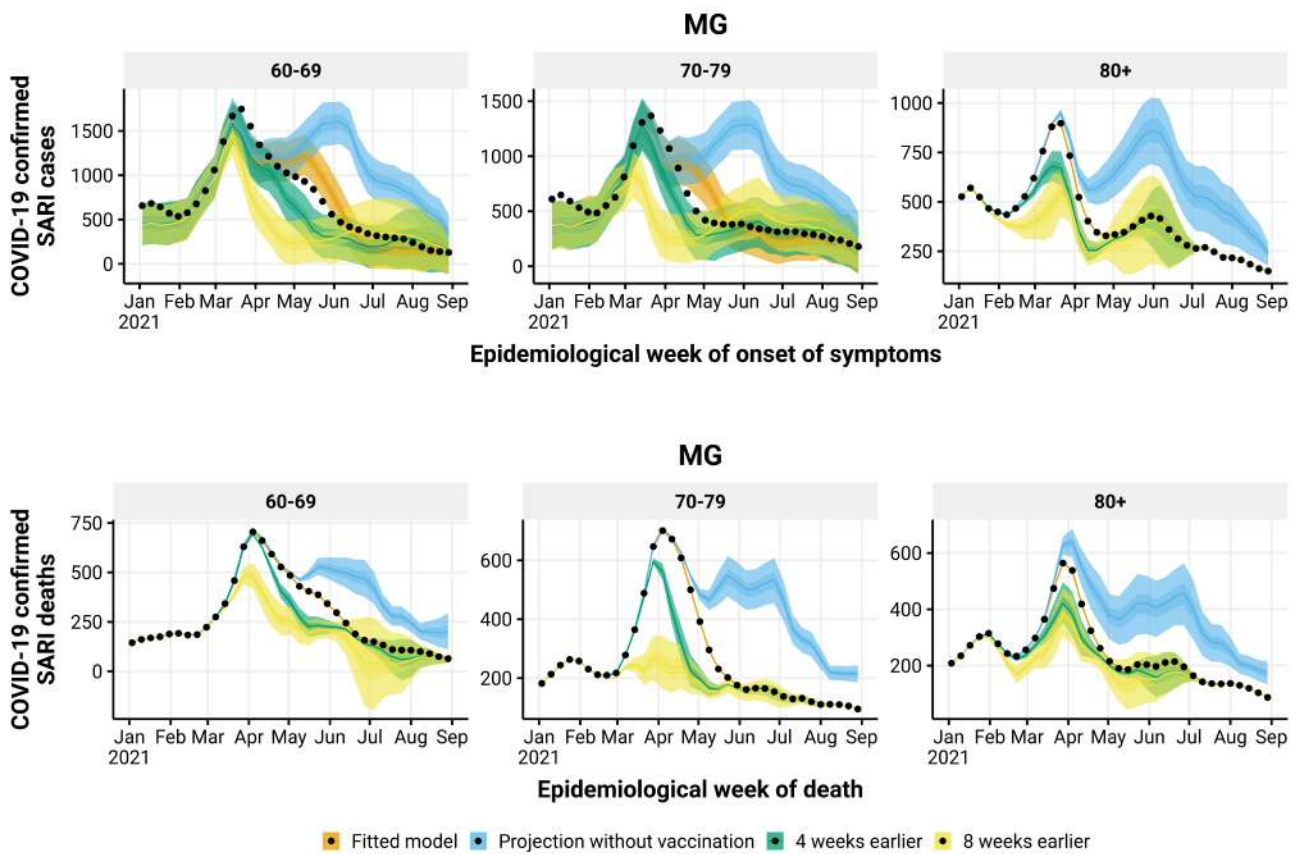


Figure 37: Estimated number of hospitalizations (top) and deaths (bottom) by epidemiological week with the realized (orange), no vaccination (blue), 4 (green) and 8 (yellow) weeks earlier vaccination rollout, by age group (panels), in MG state. The observed number of hospitalizations and deaths are given by the black points.

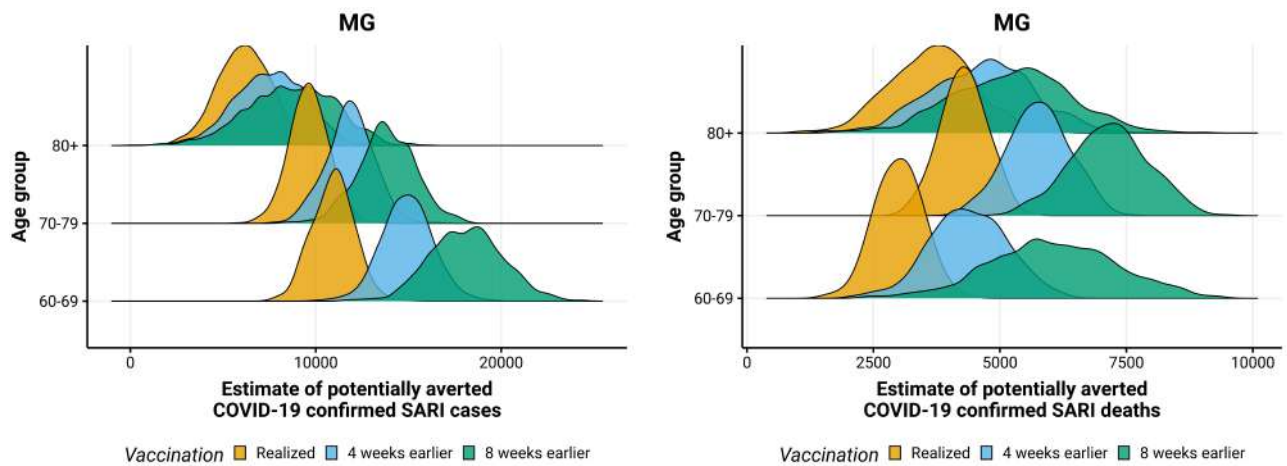


Figure 38: Posterior distribution of hospitalizations (left) and deaths (right) potentially averted by vaccination between 2021-01-01 and 2021-08-29 by age group, with the realized (orange), 4 (blue) and 8 weeks earlier (green) vaccination rollout in MG state.

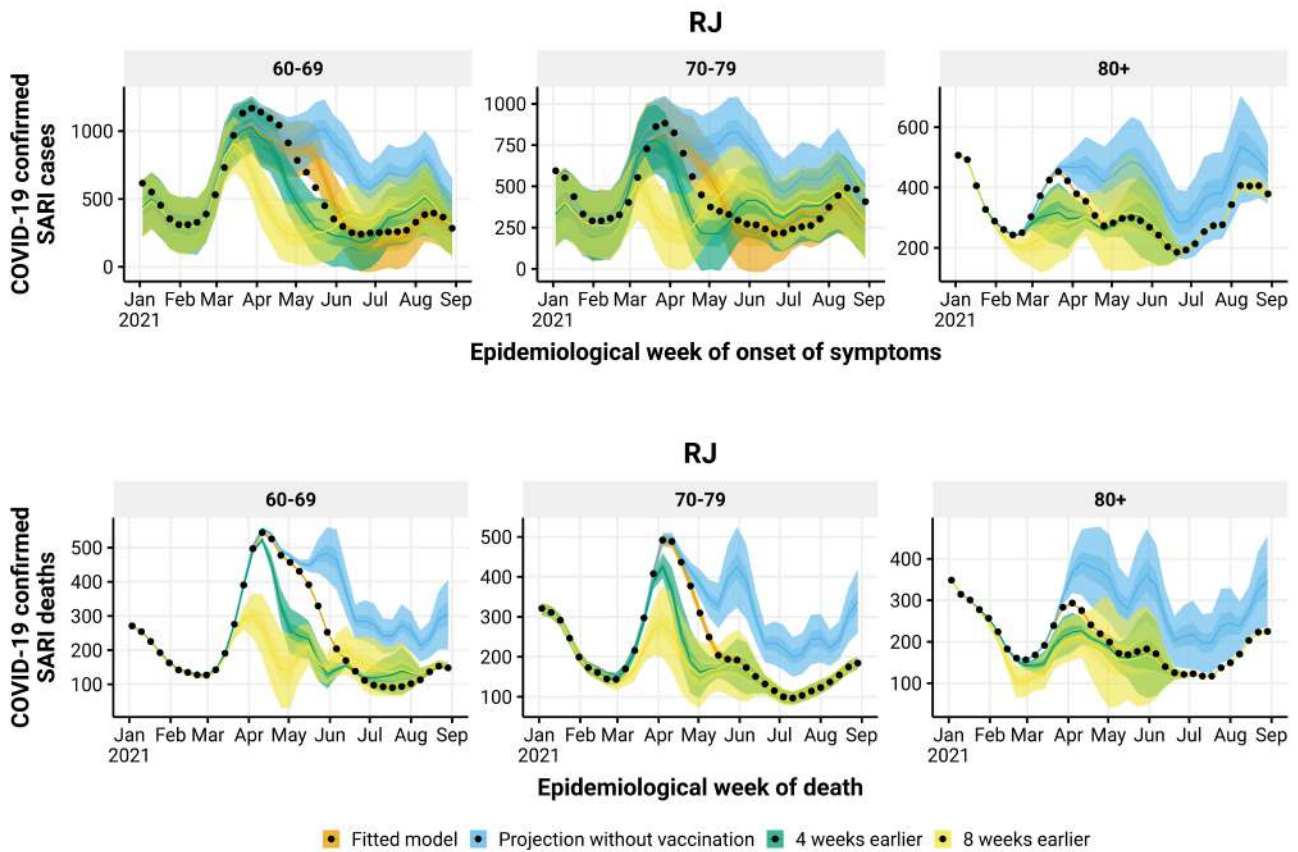


Figure 39: Estimated number of hospitalizations (top) and deaths (bottom) by epidemiological week with the realized (orange), no vaccination (blue), 4 (green) and 8 (yellow) weeks earlier vaccination rollout, by age group (panels), in RJ state. The observed number of hospitalizations and deaths are given by the black points.

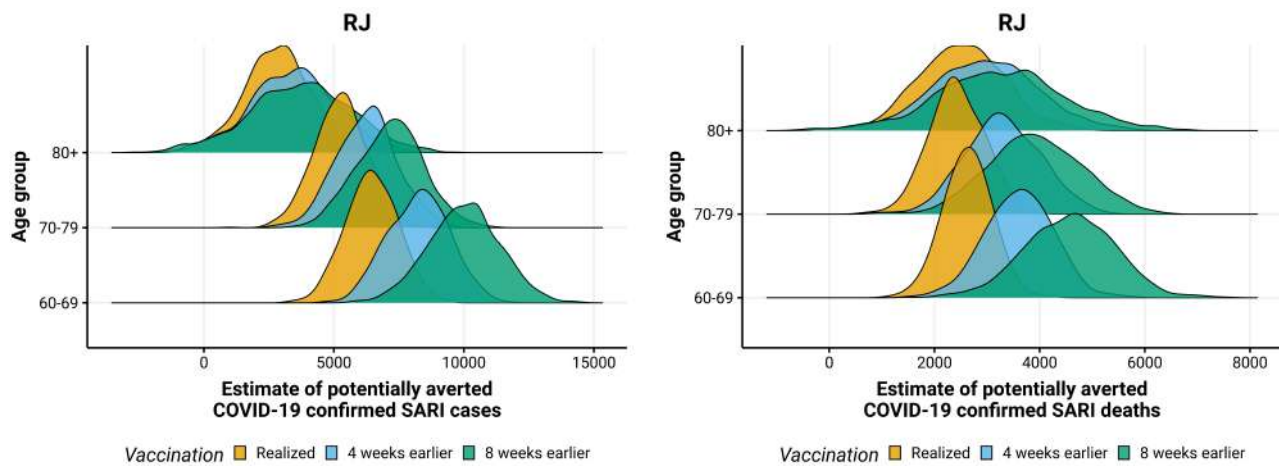


Figure 40: Posterior distribution of hospitalizations (left) and deaths (right) potentially averted by vaccination between 2021-01-01 and 2021-08-29 by age group, with the realized (orange), 4 (blue) and 8 weeks earlier (green) vaccination rollout in RJ state.

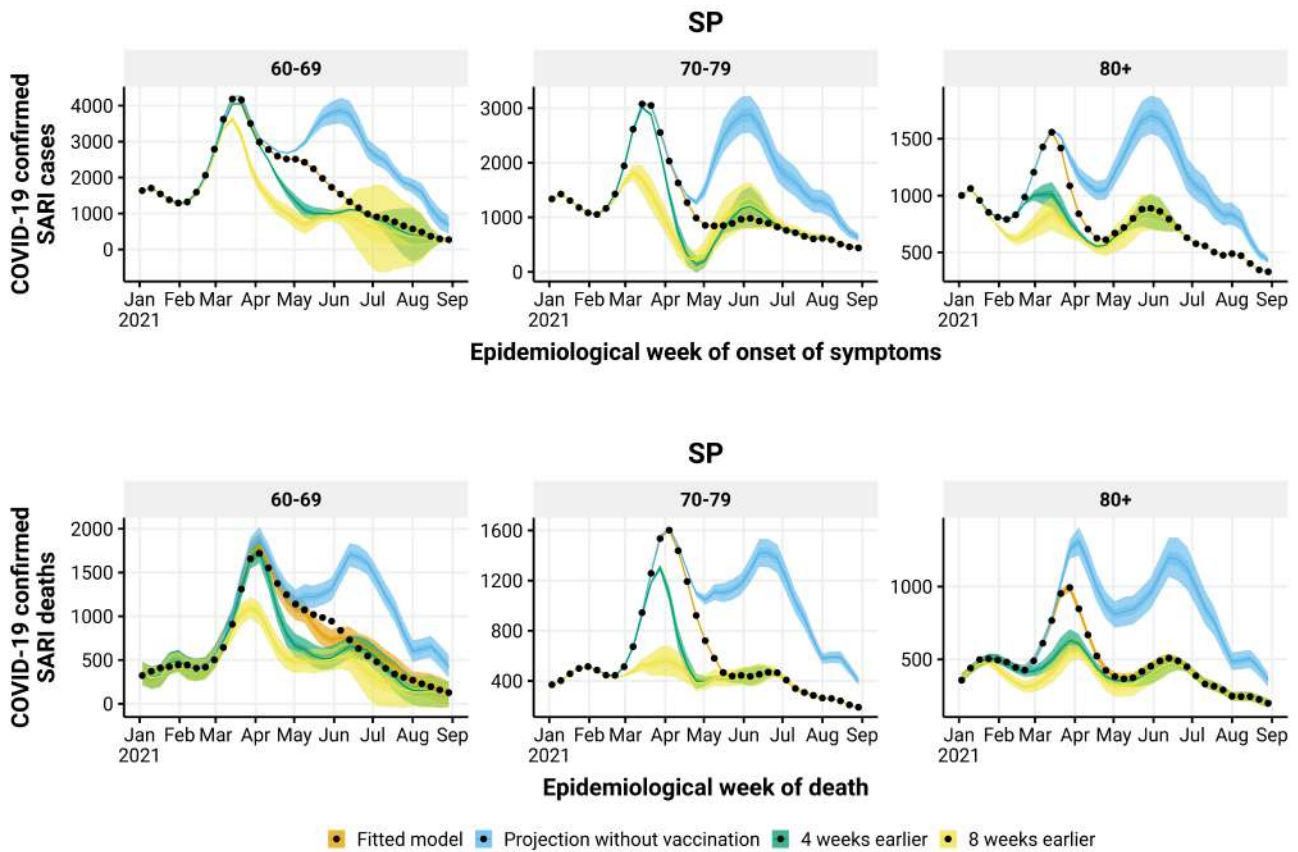


Figure 41: Estimated number of hospitalizations (top) and deaths (bottom) by epidemiological week with the realized (orange), no vaccination (blue), 4 (green) and 8 (yellow) weeks earlier vaccination rollout, by age group (panels), in SP state. The observed number of hospitalizations and deaths are given by the black points.

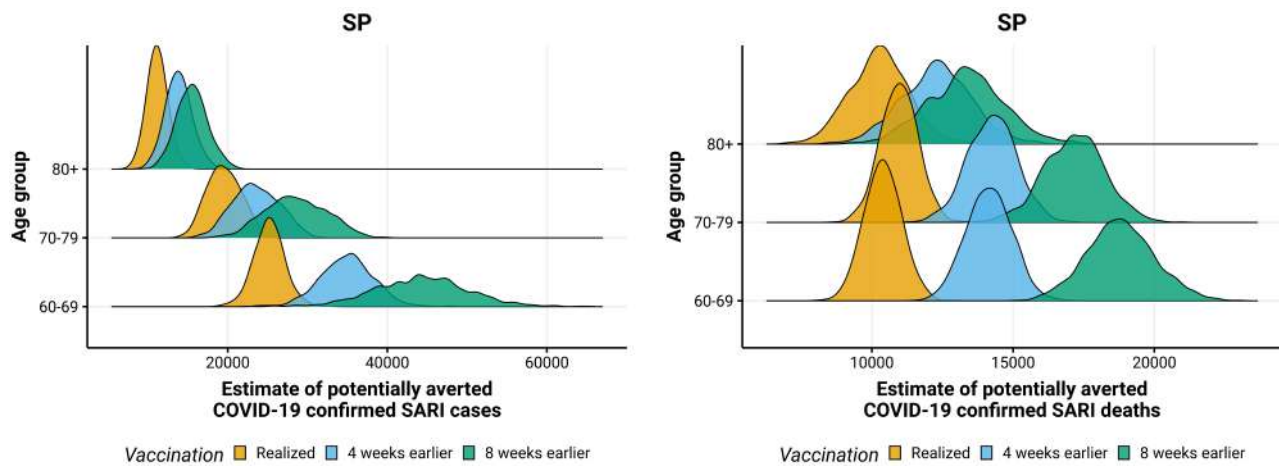


Figure 42: Posterior distribution of hospitalizations (left) and deaths (right) potentially averted by vaccination between 2021-01-01 and 2021-08-29 by age group, with the realized (orange), 4 (blue) and 8 weeks earlier (green) vaccination rollout in SP state.

1.4 South Region

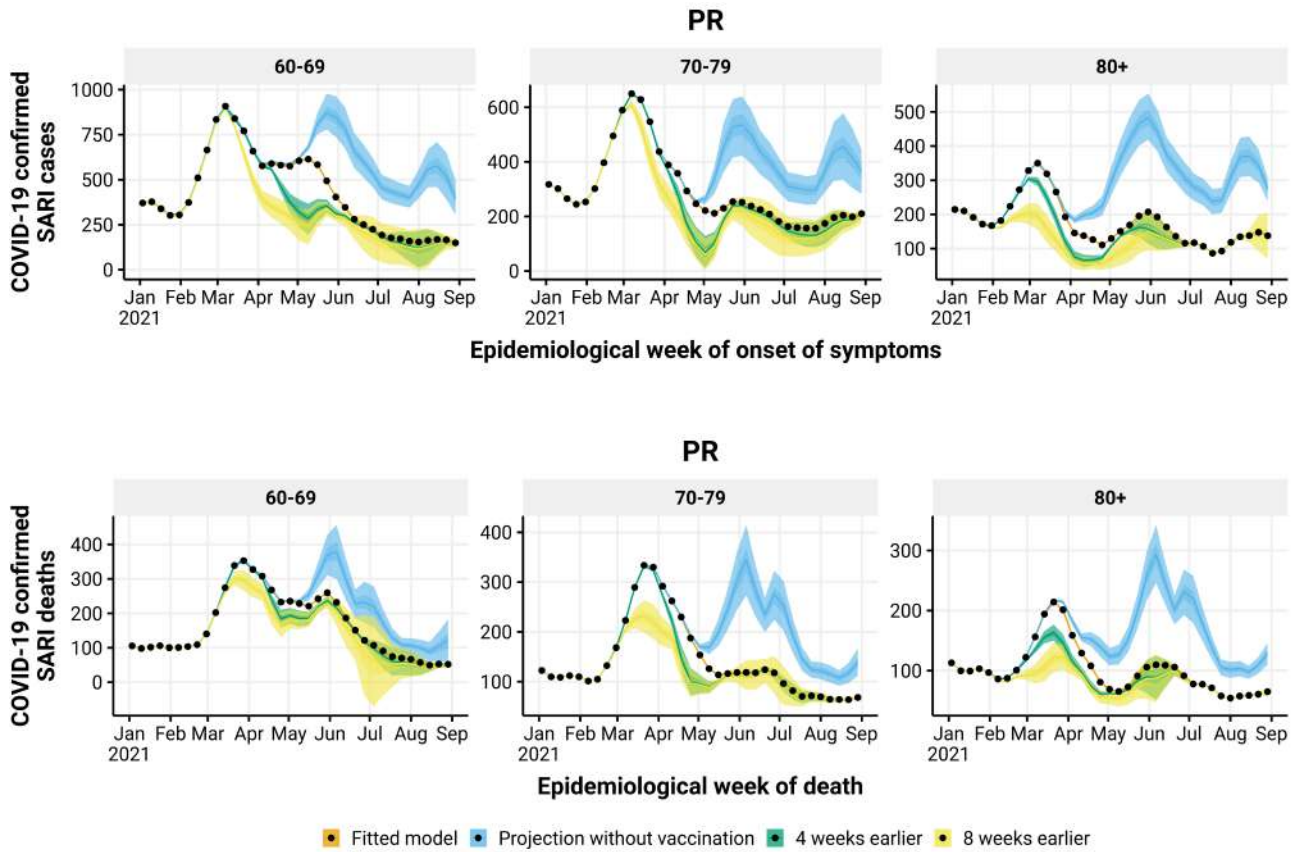


Figure 43: Estimated number of hospitalizations (top) and deaths (bottom) by epidemiological week with the realized (orange), no vaccination (blue), 4 (green) and 8 (yellow) weeks earlier vaccination rollout, by age group (panels), in PR state. The observed number of hospitalizations and deaths are given by the black points.

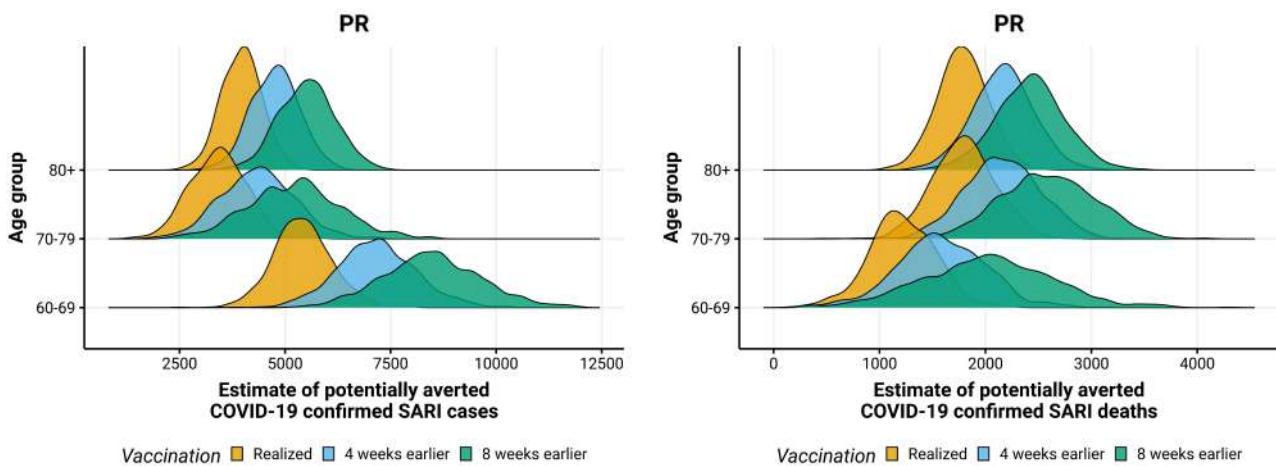


Figure 44: Posterior distribution of hospitalizations (left) and deaths (right) potentially averted by vaccination between 2021-01-01 and 2021-08-29 by age group, with the realized (orange), 4 (blue) and 8 weeks earlier (green) vaccination rollout in PR state.

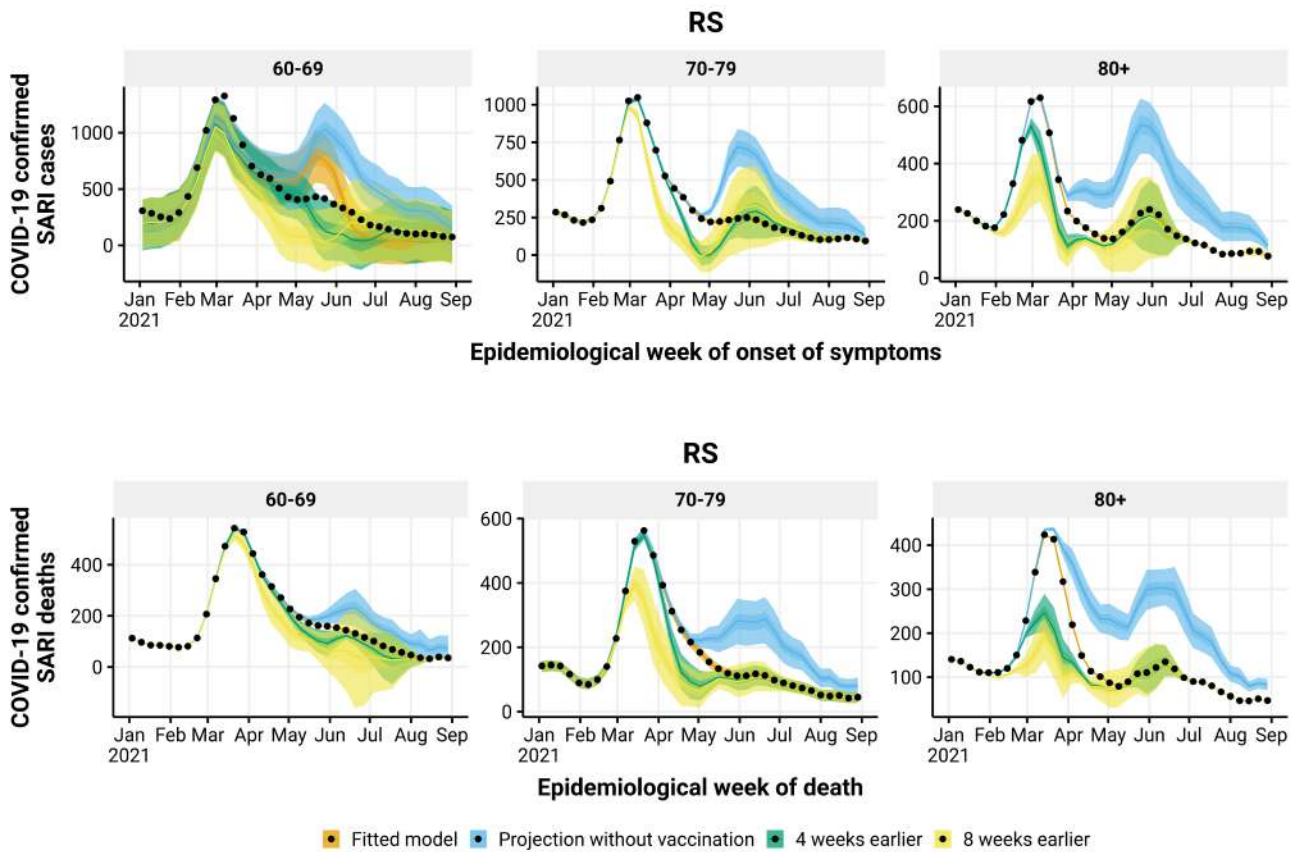


Figure 45: Estimated number of hospitalizations (top) and deaths (bottom) by epidemiological week with the realized (orange), no vaccination (blue), 4 (green) and 8 (yellow) weeks earlier vaccination rollout, by age group (panels), in RS state. The observed number of hospitalizations and deaths are given by the black points.

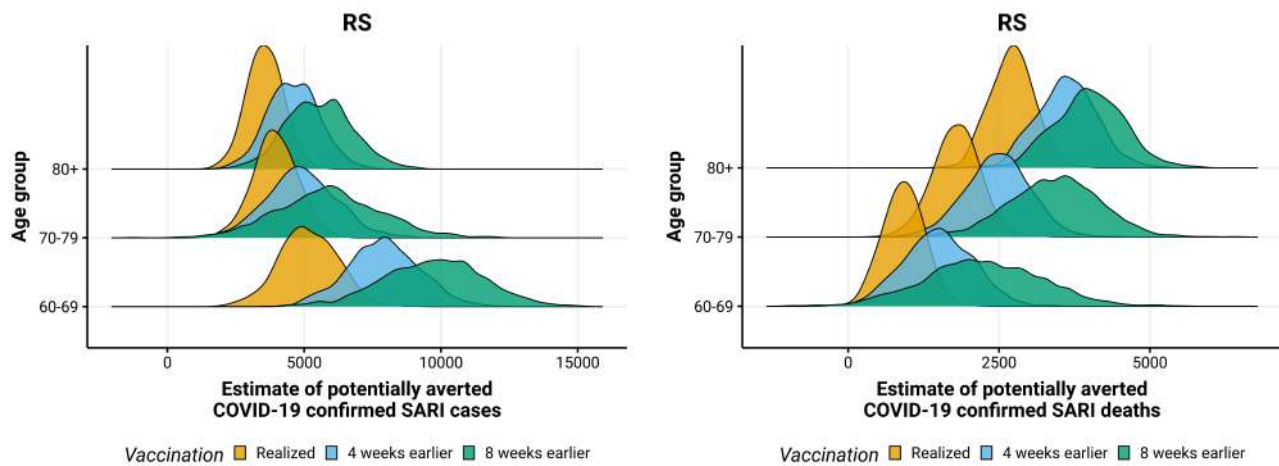


Figure 46: Posterior distribution of hospitalizations (left) and deaths (right) potentially averted by vaccination between 2021-01-01 and 2021-08-29 by age group, with the realized (orange), 4 (blue) and 8 weeks earlier (green) vaccination rollout in RS state.

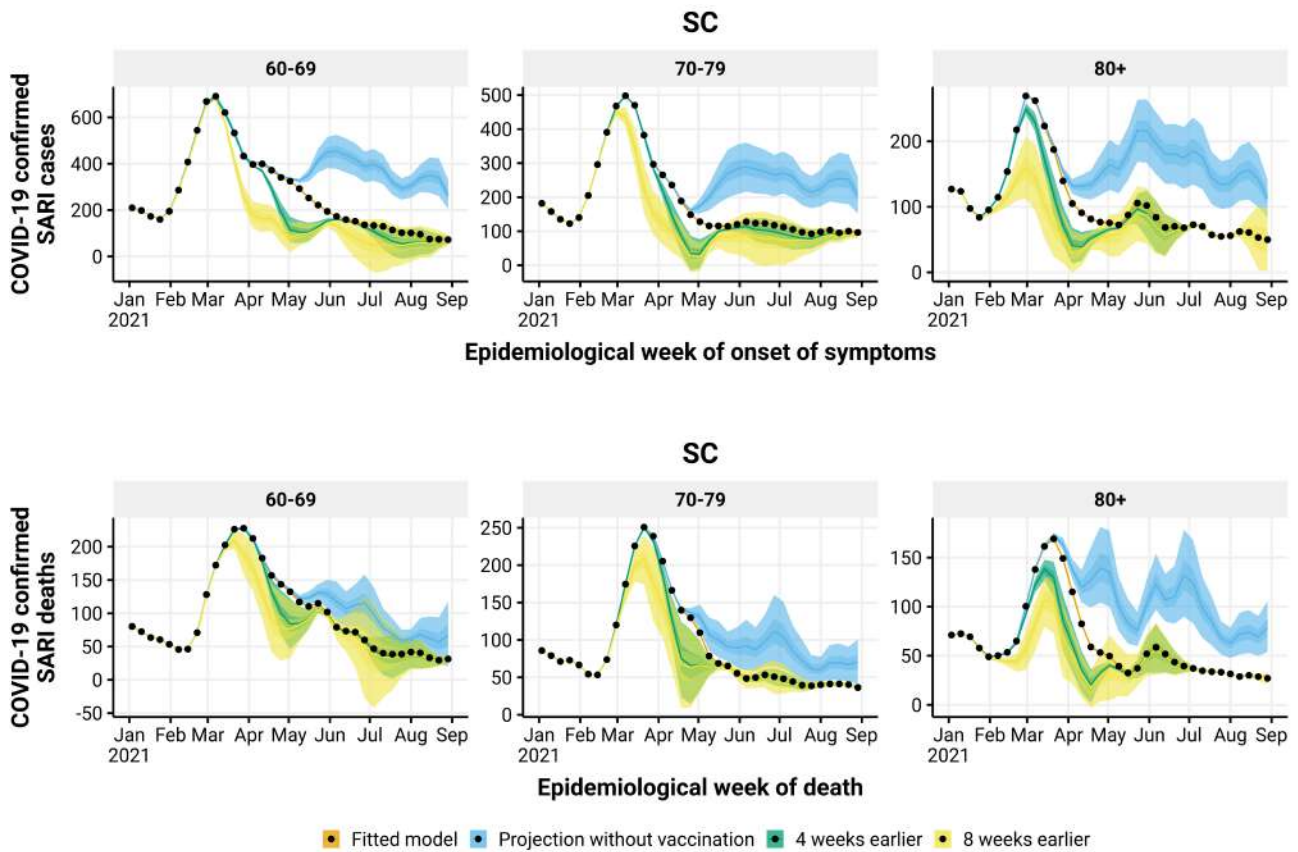


Figure 47: Estimated number of hospitalizations (top) and deaths (bottom) by epidemiological week with the realized (orange), no vaccination (blue), 4 (green) and 8 (yellow) weeks earlier vaccination rollout, by age group (panels), in SC state. The observed number of hospitalizations and deaths are given by the black points.

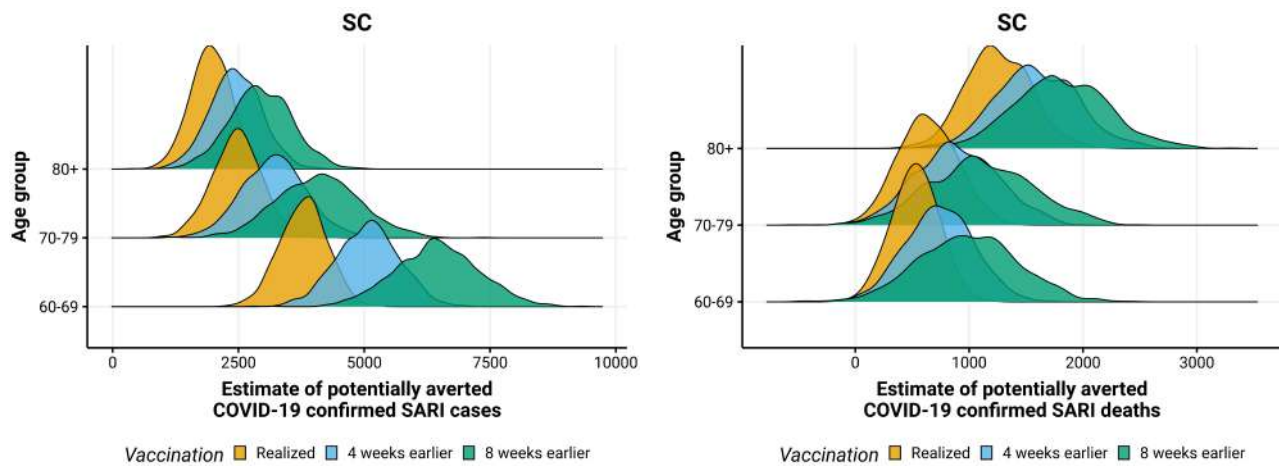


Figure 48: Posterior distribution of hospitalizations (left) and deaths (right) potentially averted by vaccination between 2021-01-01 and 2021-08-29 by age group, with the realized (orange), 4 (blue) and 8 weeks earlier (green) vaccination rollout in SC state.

1.5 Center-west Region

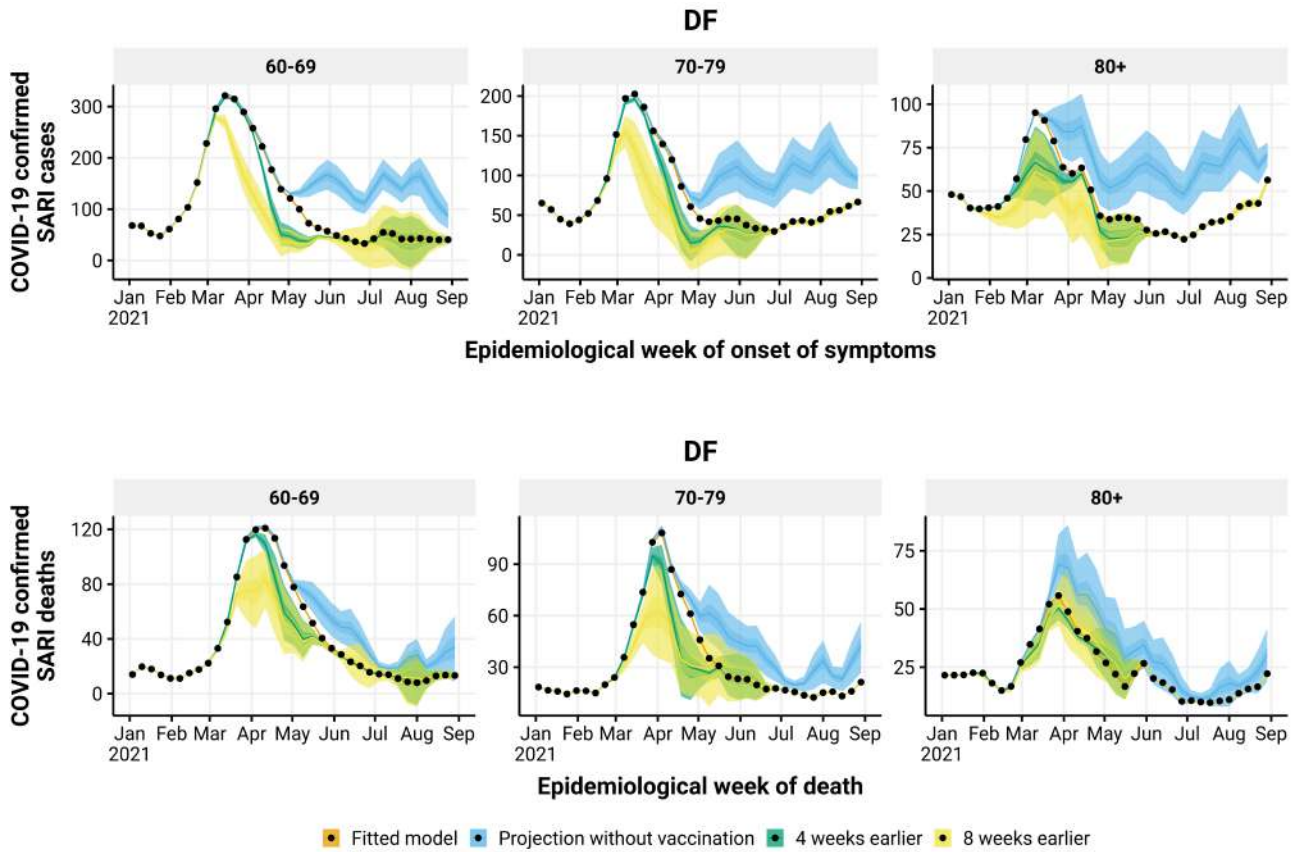


Figure 49: Estimated number of hospitalizations (top) and deaths (bottom) by epidemiological week with the realized (orange), no vaccination (blue), 4 (green) and 8 (yellow) weeks earlier vaccination rollout, by age group (panels), in DF state. The observed number of hospitalizations and deaths are given by the black points.

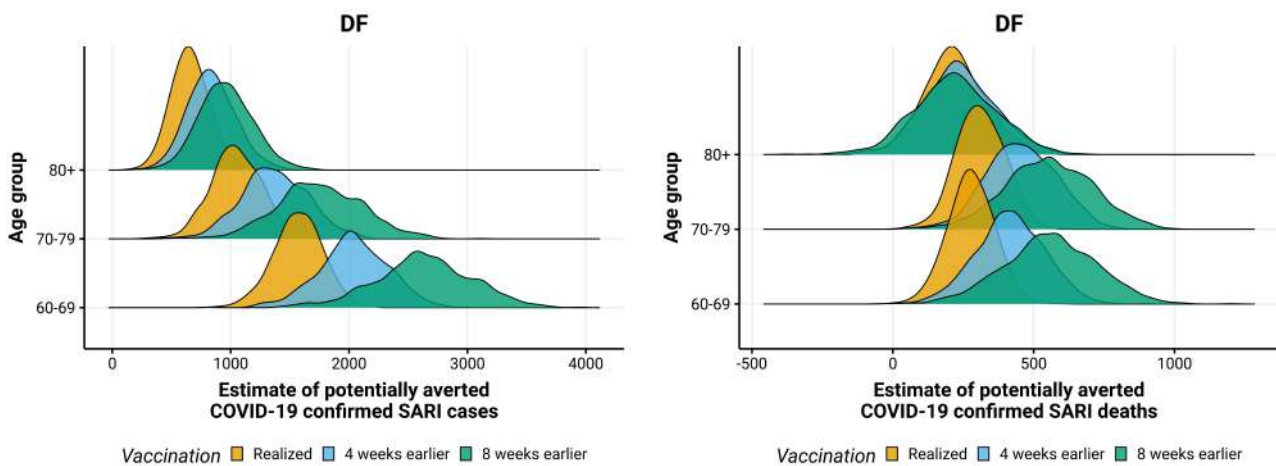


Figure 50: Posterior distribution of hospitalizations (left) and deaths (right) potentially averted by vaccination between 2021-01-01 and 2021-08-29 by age group, with the realized (orange), 4 (blue) and 8 weeks earlier (green) vaccination rollout in DF state.

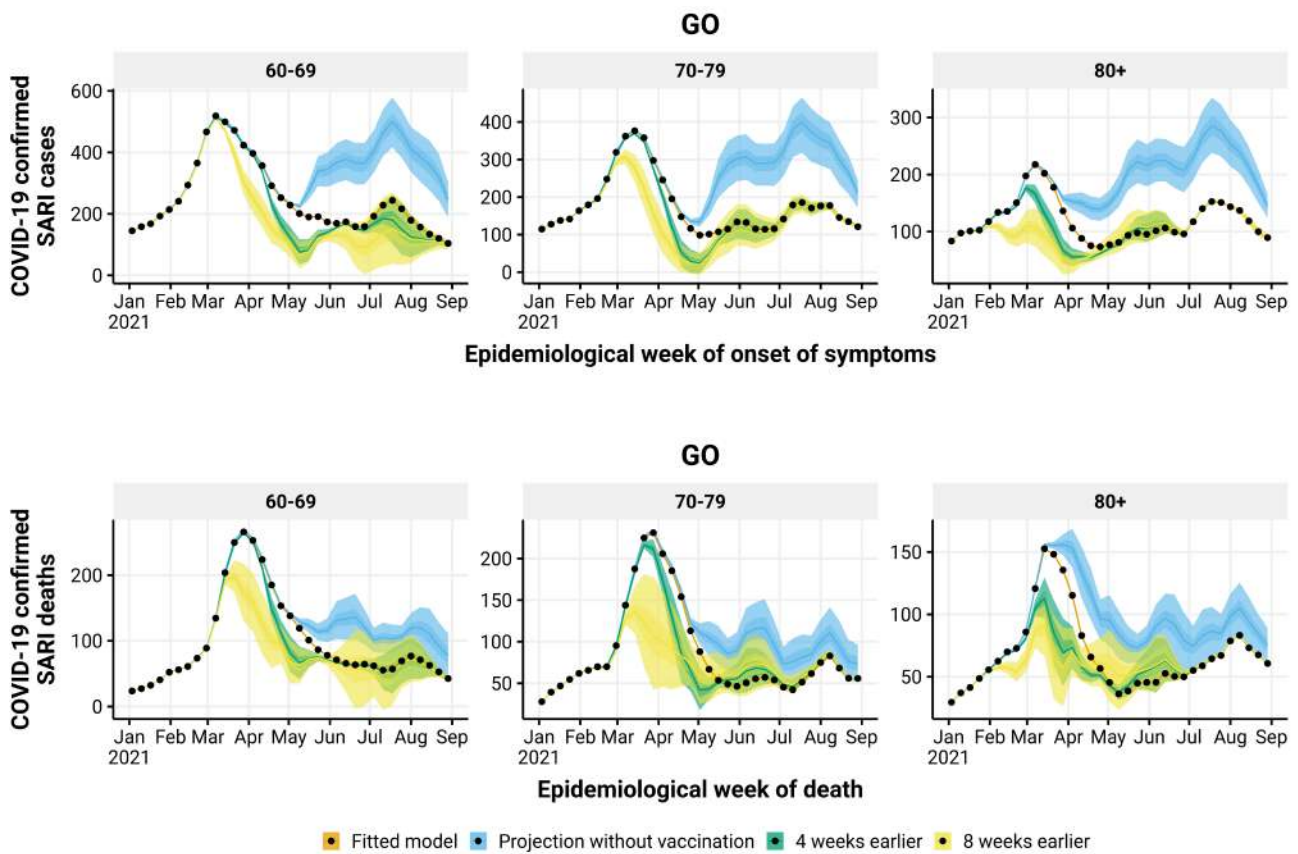


Figure 51: Estimated number of hospitalizations (top) and deaths (bottom) by epidemiological week with the realized (orange), no vaccination (blue), 4 (green) and 8 (yellow) weeks earlier vaccination rollout, by age group (panels), in GO state. The observed number of hospitalizations and deaths are given by the black points.

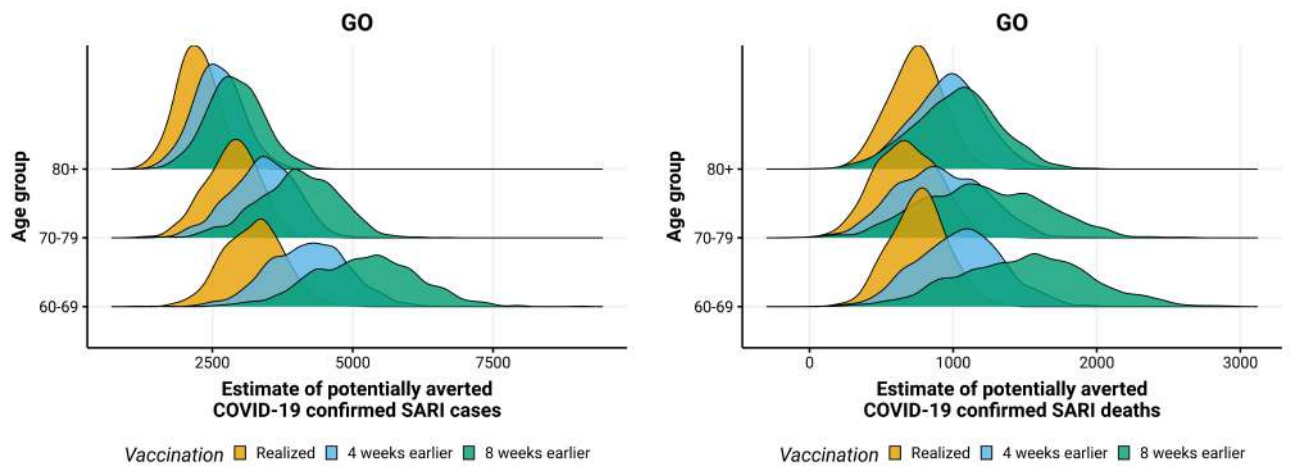


Figure 52: Posterior distribution of hospitalizations (left) and deaths (right) potentially averted by vaccination between 2021-01-01 and 2021-08-29 by age group, with the realized (orange), 4 (blue) and 8 weeks earlier (green) vaccination rollout in GO state.

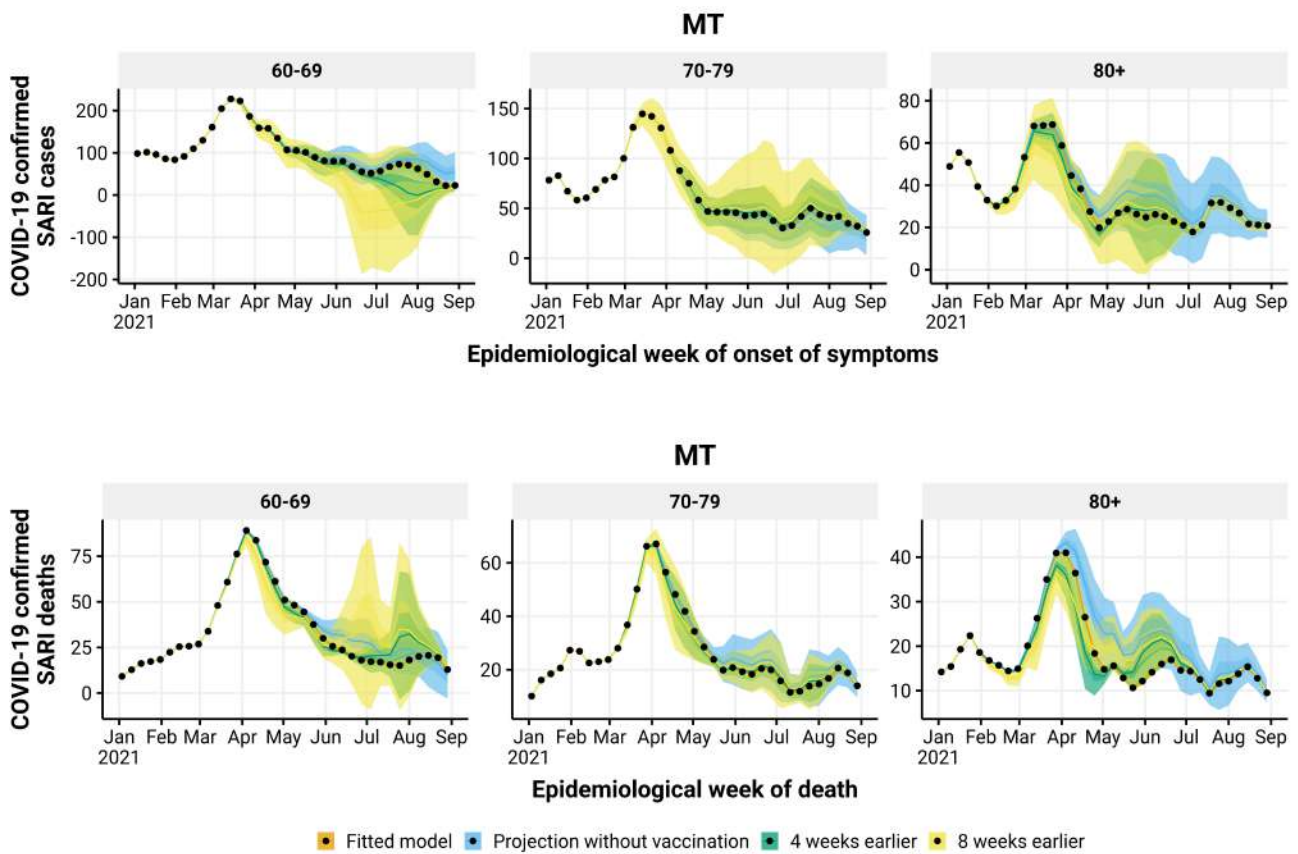


Figure 53: Estimated number of hospitalizations (top) and deaths (bottom) by epidemiological week with the realized (orange), no vaccination (blue), 4 (green) and 8 (yellow) weeks earlier vaccination rollout, by age group (panels), in MT state. The observed number of hospitalizations and deaths are given by the black points.

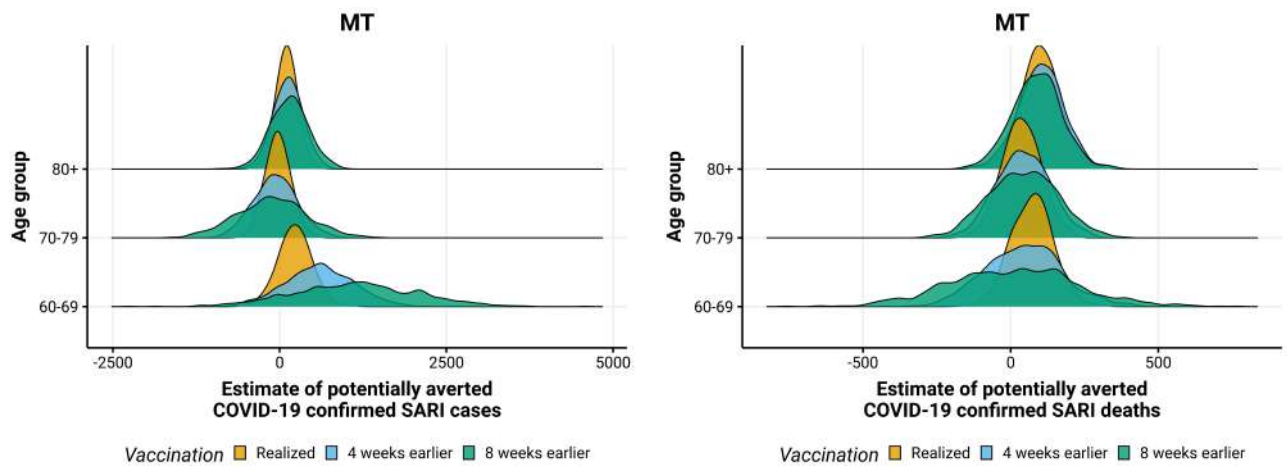


Figure 54: Posterior distribution of hospitalizations (left) and deaths (right) potentially averted by vaccination between 2021-01-01 and 2021-08-29 by age group, with the realized (orange), 4 (blue) and 8 weeks earlier (green) vaccination rollout in MT state.

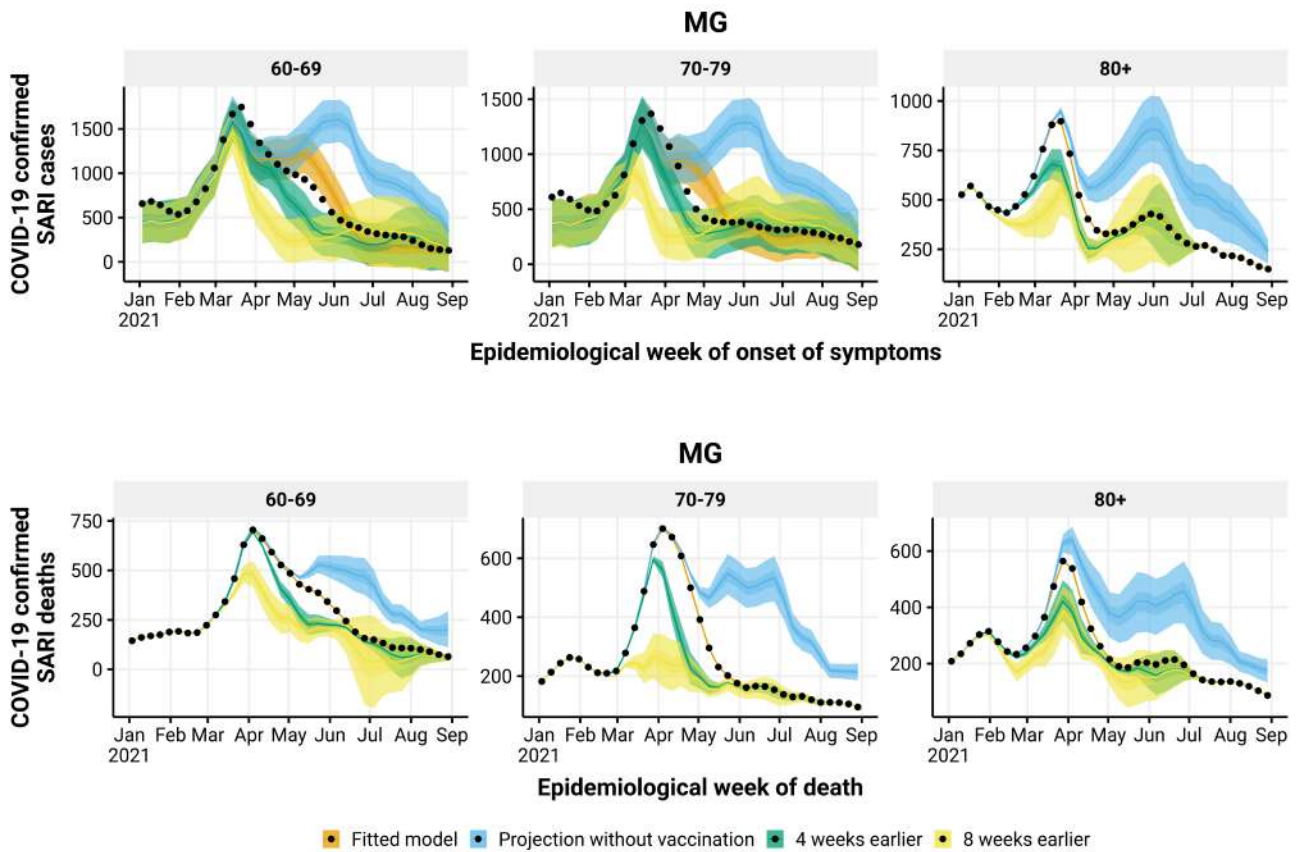


Figure 55: Estimated number of hospitalizations (top) and deaths (bottom) by epidemiological week with the realized (orange), no vaccination (blue), 4 (green) and 8 (yellow) weeks earlier vaccination rollout, by age group (panels), in MG state. The observed number of hospitalizations and deaths are given by the black points.

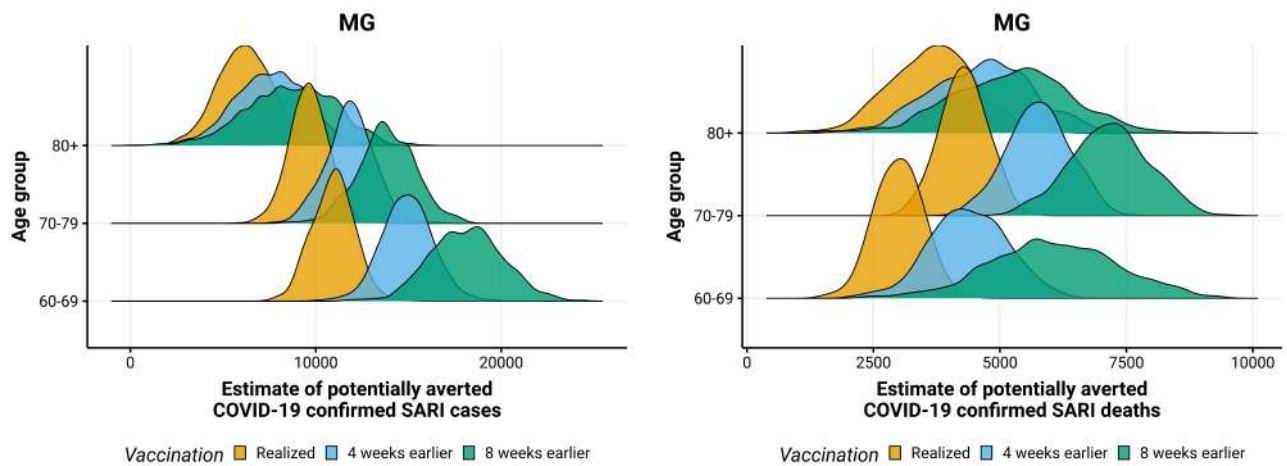


Figure 56: Posterior distribution of hospitalizations (left) and deaths (right) potentially averted by vaccination between 2021-01-01 and 2021-08-29 by age group, with the realized (orange), 4 (blue) and 8 weeks earlier (green) vaccination rollout in MG state.