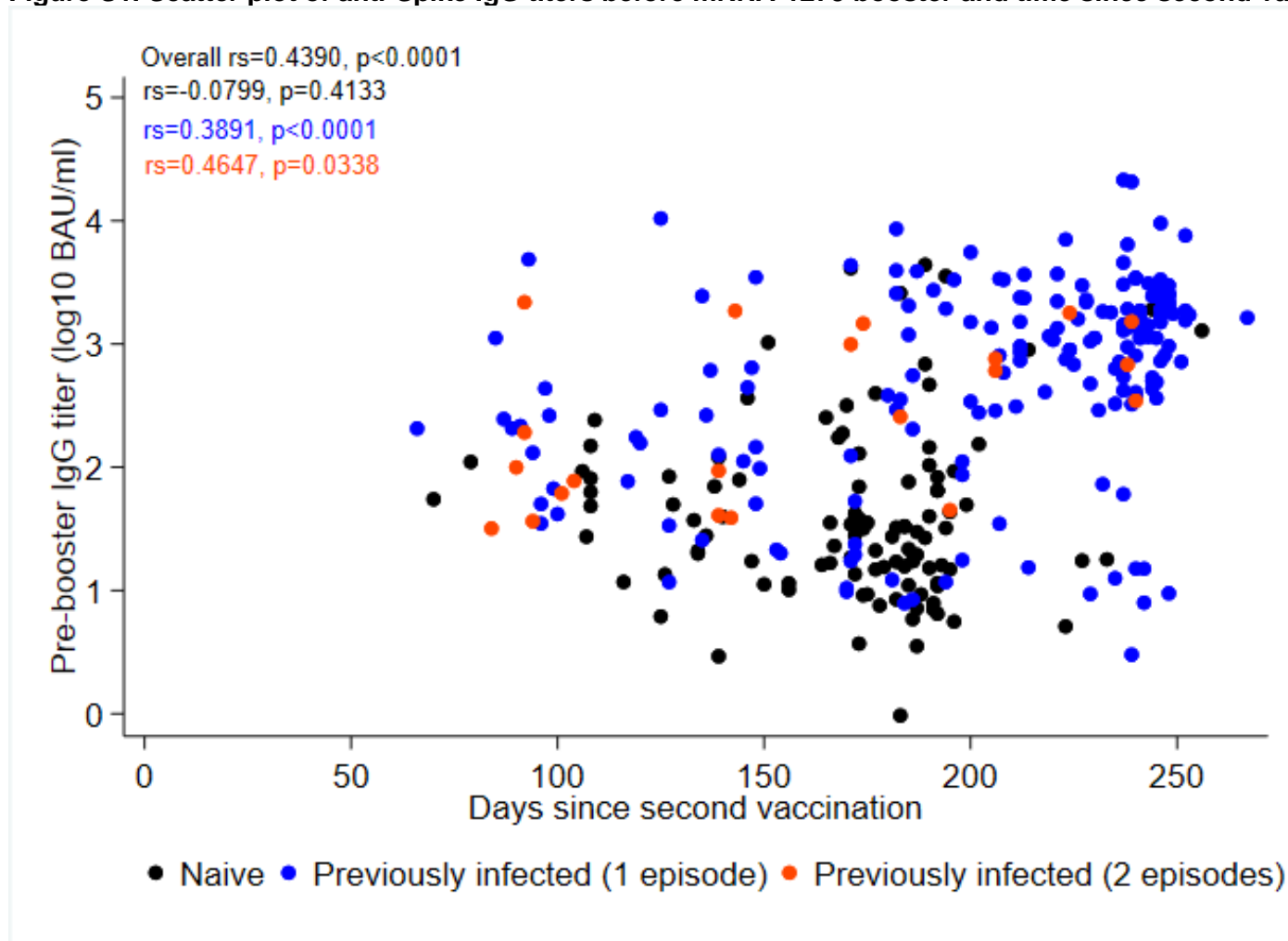
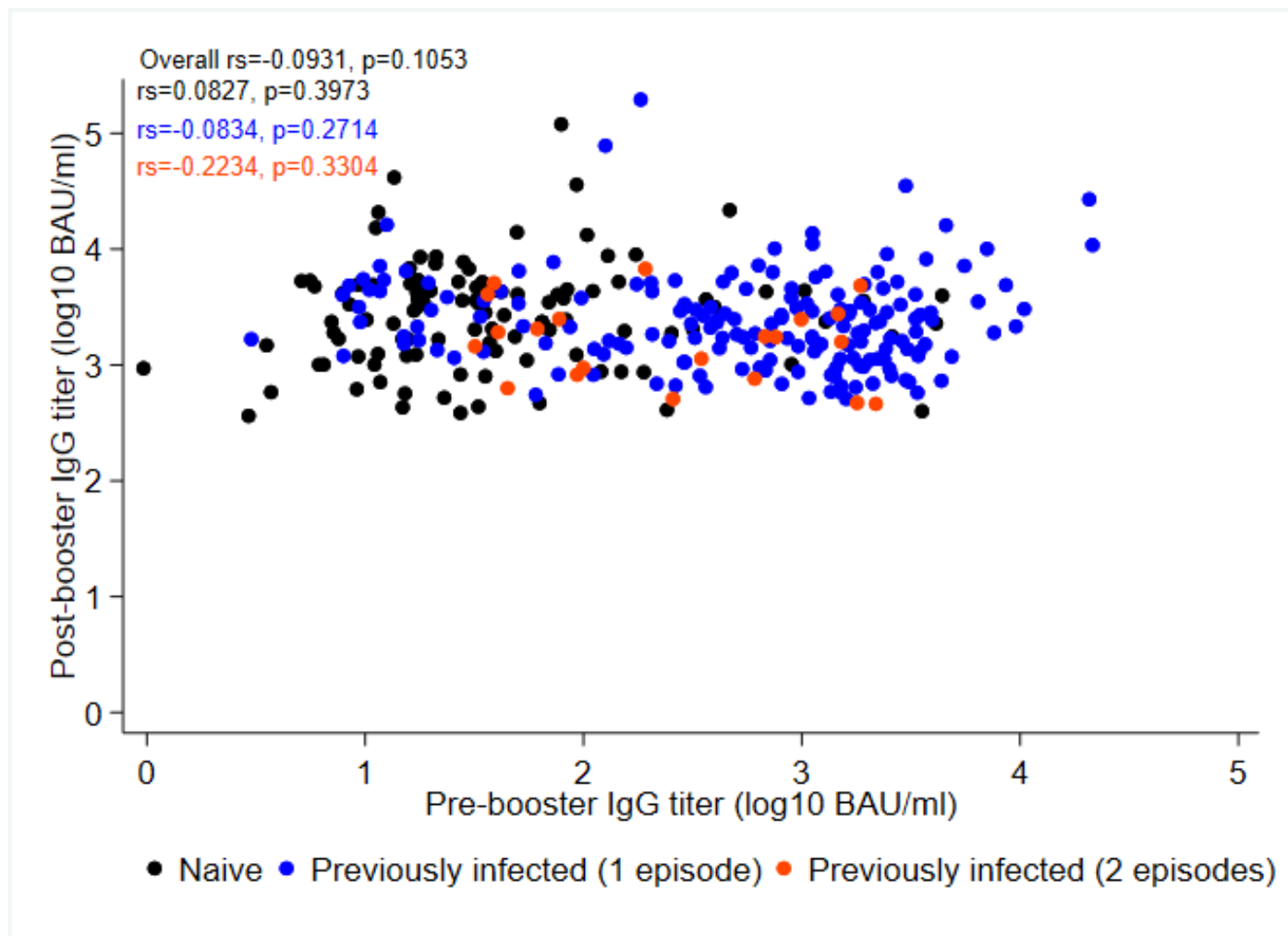


Figure S1. Scatter plot of anti-Spike IgG titers before mRNA-1273 booster and time since second vaccination



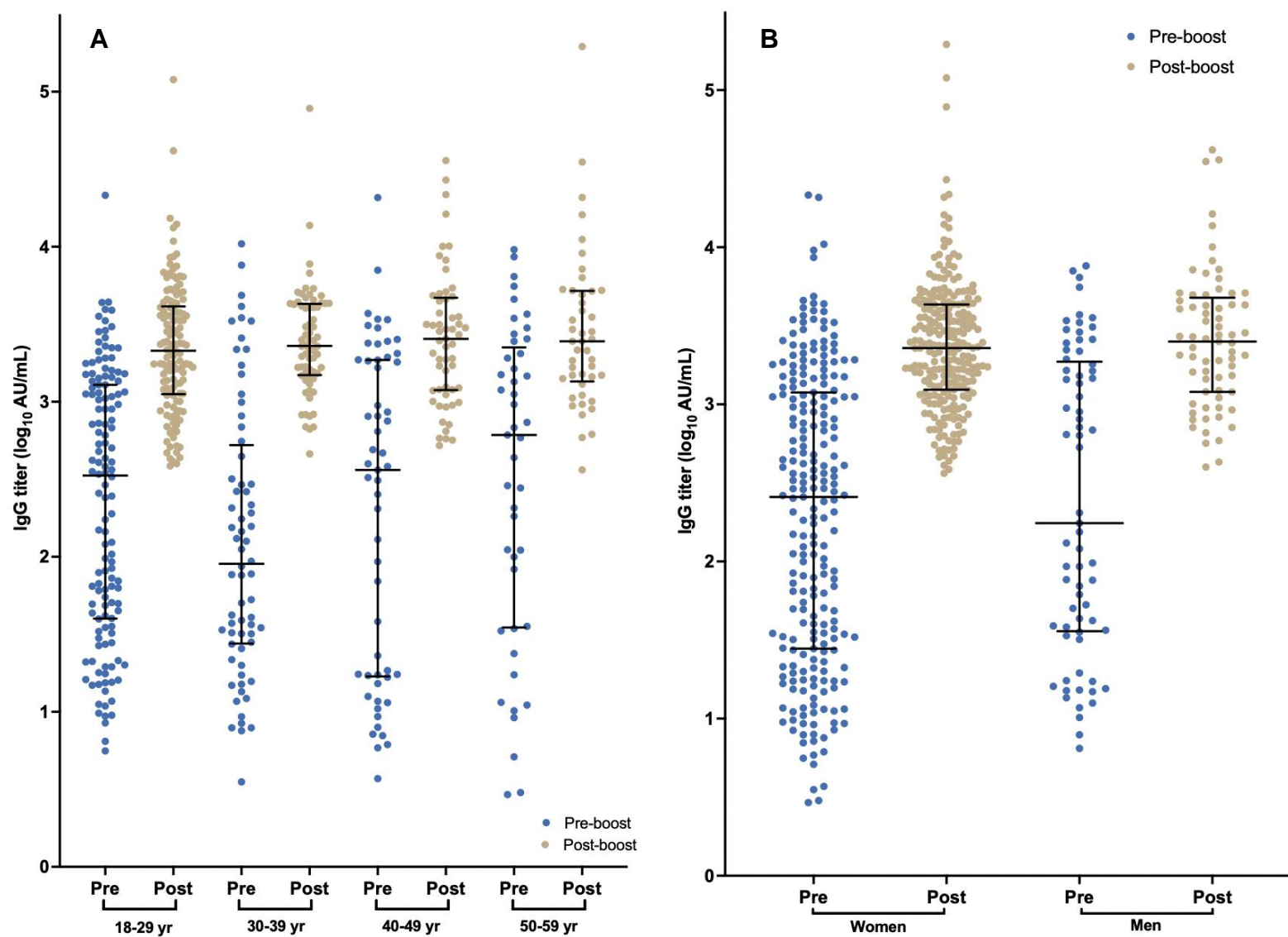
Pre-boost IgG titers correlated positively with the time since the second CoronaVac vaccine dose in previously infected participants (either one or two episodes), but did not correlate in naïve participants.

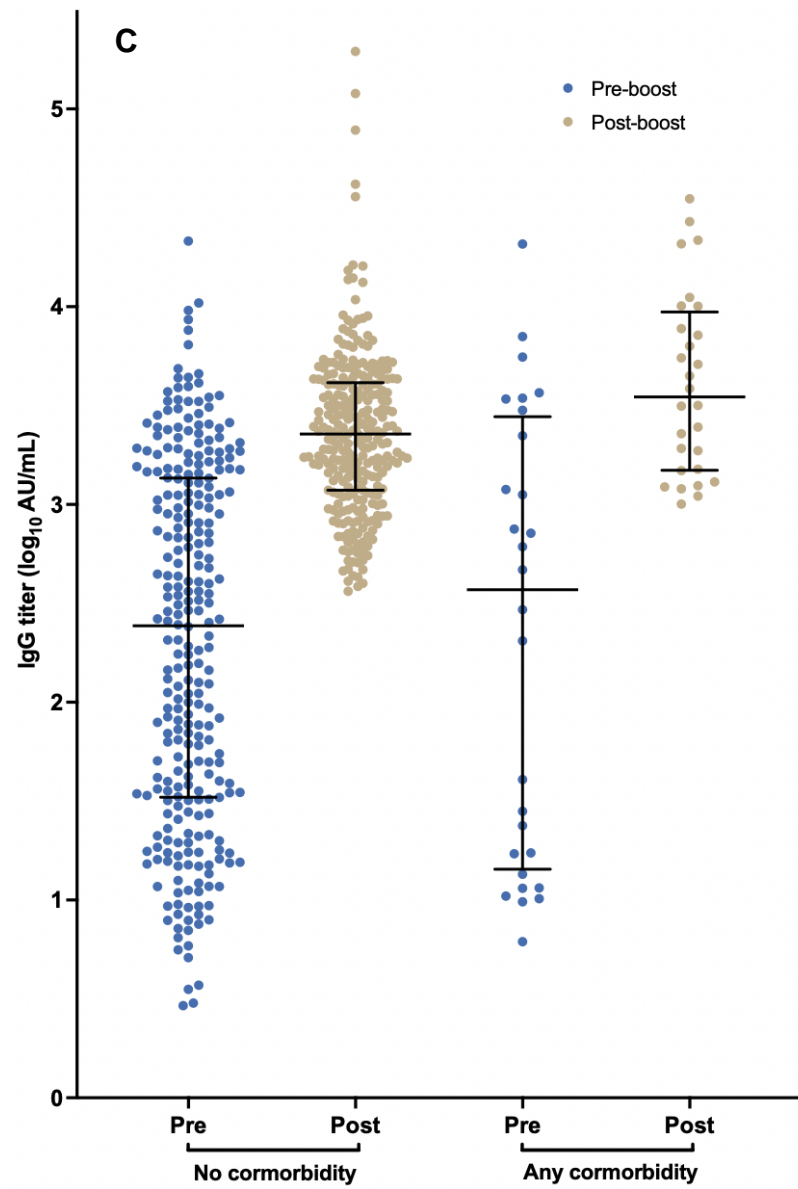
Figure S2. Scatter plot of anti-Spike IgG titers before and after mRNA-1273 booster



All participants reached a substantial post-boost titer, ranging between 2570 and 1,380,384 BAU/mL (2.73 log₁₀ range), and this was irrespective of the pre-boost IgG titer or previous infection.

Figure S3. Anti-Spike IgG titers before and after mRNA-1273 booster

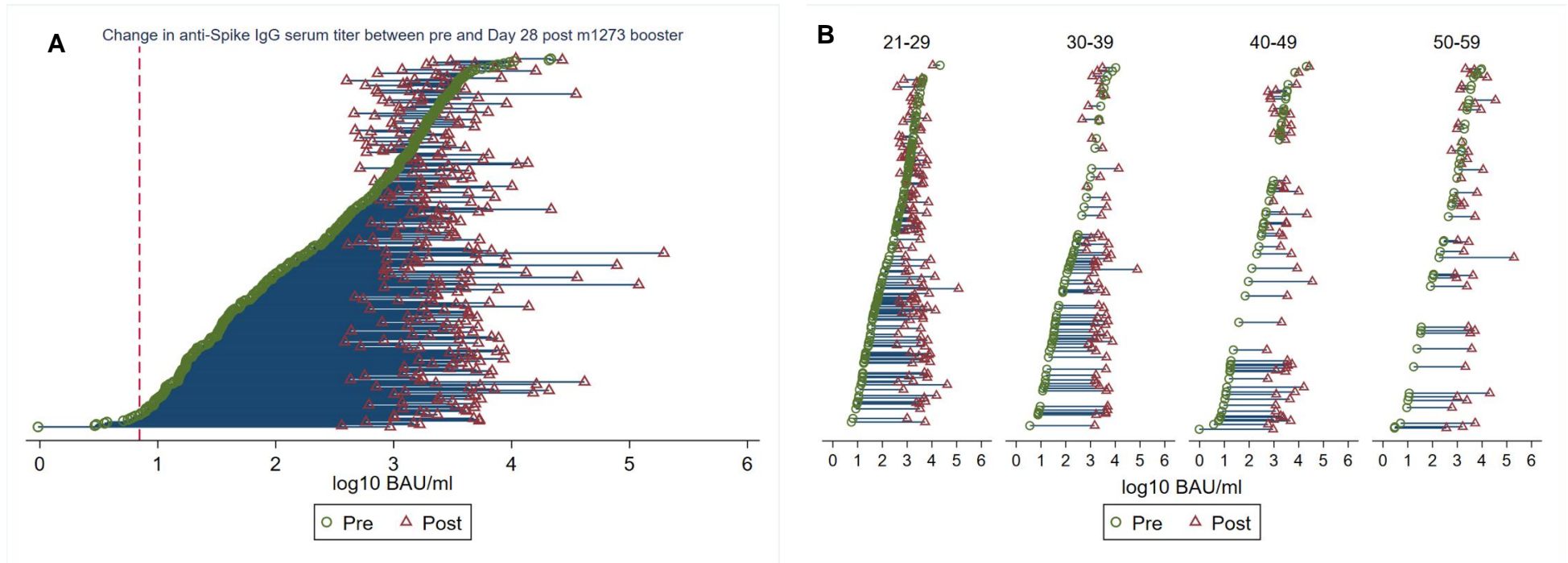


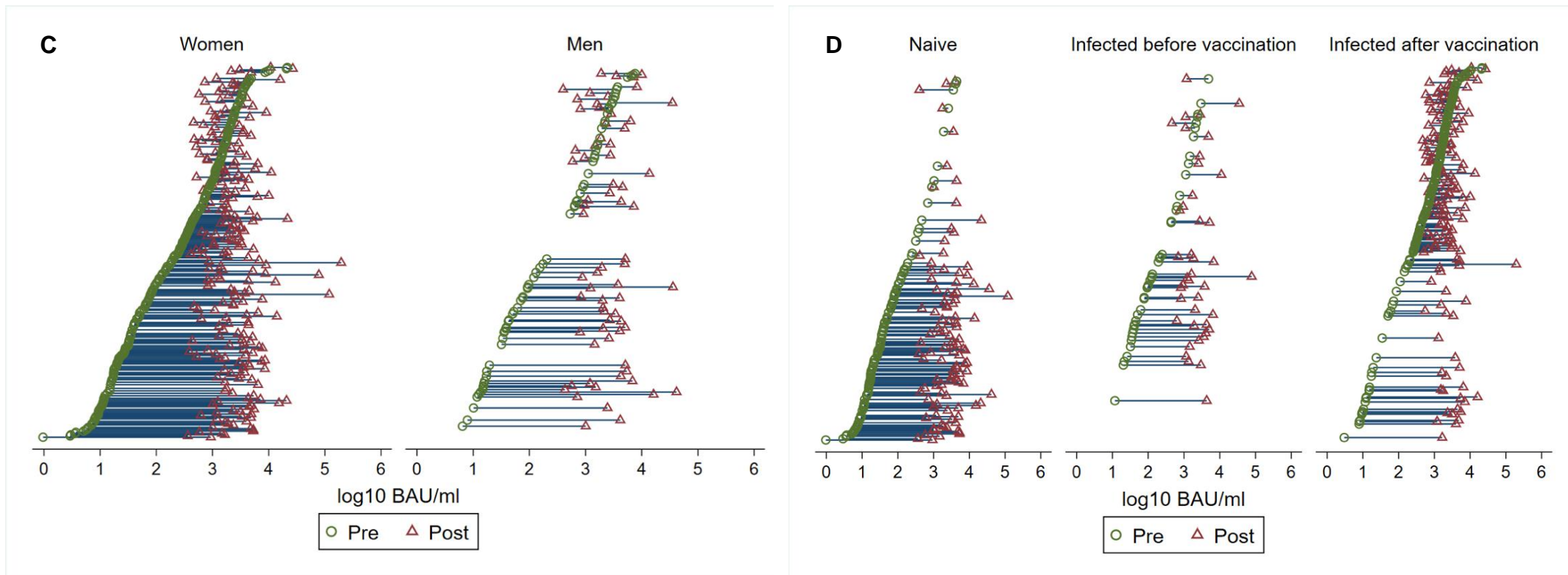


Panels (A-C) show dot plots of pre and post-booster IgG titers, by (A) age groups, (B) sex, (C) comorbidity.

IgG titers shown as binding antibody units (BAU)/mL (according to WHO International Standard).

Figure S3. Change in anti-Spike IgG titers between before and after mRNA-1273 booster





Panels (A-D) show the change in anti-Spike serum titer between pre and Day 28 post mRNA-1273 booster, (A) overall and by (B) age groups, (C) sex, (D) previous SARS-CoV-2 infection before or after CoronaVac. Participants (N=304) are ranked by pre-booster IgG titer. Dashed red line (A) represents cut-off of seropositivity (≥ 7.1 BAU/mL).

Table S1. Anti-Spike IgG titers before and Day 28 after mRNA-1273 booster

	Median pre-booster (IQR)	Median post-booster (IQR)	Fold change	p-value
Overall	249.8 (31.9-1389.2)	2312.8 (1225.8-4324.3)	9.3	<0.0001
Age				
21-29	334.9 (39.9-1285.1)	2132.8 (1128.2-4066.2)	6.4	<0.0001
30-39	90.2 (27.7-500.4)	2292.2 (1500.2-4271.4)	25.0	<0.0001
40-49	363.1 (17.1-1856.7)	2543.9 (1197.1-4594.4)	7.0	<0.0001
50-59	611.0 (35.5-2048.7)	2455.2 (1410.2-5177.3)	2.8	0.0001
Sex				
Women	257.1 (27.9-1191.1)	2278.4 (1238.2-4315.4)	8.9	<0.0001
Men	175.2 (36.4-1804.3)	2510.6 (1202.7-4570.3)	14.3	<0.0001
Previous SARS-CoV2 infection				
0	31.8 (14.8-84.3)	2833.6 (1227.6-4686.7)	89.1	<0.0001
1	808.5 (193.5-2049.1)	2163.0 (1301.4-4033.3)	2.7	<0.0001
2	257.1 (61.5-994.1)	1741.6 (823.6-2492.8)	6.8	0.0010
Previous SARS-CoV-2 infection timing				
None	31.8 (14.8-84.3)	2833.6 (1227.6-4686.7)	89.1	<0.0001
Before CoronaVac	124.9 (41.7-760.3)	1985.5 (1153.0-4077.5)	15.9	<0.0001
After CoronaVac	962.6 (292.0-2115.5)	2136.4 (1299.3-3854.6)	2.2	<0.0001
Time interval between second dose and mRNA-1273 booster				
1	80.1 (34.3-211.6)	2369.6 (1202.0-4324.3)	24.6	<0.0001
2	33.0 (15.5-294.0)	2943.0 (1482.5-4686.7)	94.6	<0.0001
3	709.4 (49.6-1596.1)	2522.3 (1303.6-5305.1)	3.4	<0.0001
4	1439.5 (533.8-2226.6)	1714.7 (1132.5-2764.0)	1.2	0.0037
Comorbidity				
0	243.9 (33.1-1359.9)	2269.9 (1180.7-4115.5)	9.3	<0.0001
≥1	380.9 (15.3-2608.7)	3510.3 (1494.9-8898.8)	9.2	<0.0001

Data are expressed as binding antibody units (BAU)/mL (according to WHO International Standard)

Table S2. Adverse reactions within seven days after receiving the mRNA-1273 booster dose

	N (%)	Grade 1	Grade 2	Grade 3	Grade 4	Unknown
Any adverse reactions	300 (98.68)	86 (28.29)	131 (43.09)	59 (19.41)	24 (7.89)	0 (0.00)
Any local reaction	293 (96.38)	103 (33.88)	134 (44.08)	43 (14.14)	13 (4.28)	0 (0.00)
Pain	290 (95.39)	107 (35.20)	126 (41.45)	43 (14.14)	13 (4.28)	1 (0.33)
Swelling	183 (60.20)	113 (37.17)	52 (17.11)	17 (5.59)	0 (0.00)	1 (0.33)
Redness	110 (36.18)	74 (24.34)	32 (10.53)	4 (1.32)	0 (0.00)	0 (0.00)
Any systemic reaction	276 (90.79)	120 (39.47)	87 (28.62)	49 (16.12)	19 (6.25)	1 (0.33)
Myalgia	192 (63.16)	93 (30.59)	61 (20.07)	31 (10.20)	7 (2.30)	0 (0.00)
Fever/chills	189 (62.17)	110 (36.18)	44 (14.47)	20 (6.58)	7 (2.30)	6 (1.97)
Headache	184 (60.53)	95 (31.25)	45 (14.80)	38 (12.50)	4 (1.32)	0 (0.00)
Fatigue	168 (55.26)	87 (28.62)	52 (17.11)	24 (7.89)	4 (1.32)	1 (0.33)
Arthralgia	143 (47.04)	61 (20.07)	46 (15.13)	31 (10.20)	5 (1.64)	0 (0.00)
Nausea	95 (31.25)	57 (18.75)	25 (8.22)	8 (2.63)	3 (0.99)	0 (0.00)
Anaphylaxis	0 (0.0)	0 (0.00)	0 (0.00)	0 (0.00)	0 (0.00)	0 (0.00)

The table shows solicited adverse reactions, that were verified and graded for severity by the study physician. Severity grading: 1) mild (does not or minimally interfere with usual social and functional activities); 2) moderate (interferes with usual social and functional activities); 3) severe (causing inability to perform usual social and functional activities); 4) disrupting/impairing activities of daily living (ADL). No participants required hospitalization or died.

Table S3. Regression analysis of occurrence of severe or disrupting adverse reactions.

	Univariable			Multivariable		
	OR	95%CI	P	OR	95%CI	P
Age, per decade increase	0.69	0.53-0.90	0.006	0.71	0.54-0.92	0.011
Sex						
Men	1 (ref)			1 (ref)		
Women	1.63	0.85-3.130	0.139	1.60	0.81-3.17	0.174
Comorbidities						
No	1 (ref)			-	-	-
Yes	0.88	0.36-2.15	0.774	-	-	-
Past COVID-19						
No	1 (ref)			1 (ref)		
Yes	1.73	0.99-3.03	0.053	1.20	0.59-2.44	0.619
Pre-booster IgG	1.43	1.08-1.89	0.013	0.73	0.33-1.61	0.431
Post-booster IgG	0.58	0.31-1.10	0.095	-	-	-
Change in IgG titers between before and after mRNA-1273 boost	0.69	0.53-0.89	0.004	0.65	0.33-1.30	0.225
Interval between first and second vaccination, per day increase	0.97	0.93-1.00	0.059	0.99	0.96-1.02	0.484
Interval between second vaccination and mRNA-1273 booster dose, per month increase	1.51	1.25-1.83	<0.0001	1.37	1.09-1.72	0.007

Table shows univariable and multivariable logistic regression with occurrence of any severe or ADL-disrupting adverse reaction as the dependent variable.

Severe or disrupting adverse reactions were defined as causing inability to perform usual social and functional activities or disrupting/impairing activities of daily living (ADL), respectively.

Interval between first and second dose, post-booster IgG titer, and presence of any comorbidity were not associated with the occurrence of severe or disrupting adverse reaction.