

## **Supplementary material**

### **Persistent symptoms among children and adolescents with and without anti-SARS-CoV-2 antibodies: a population-based serological study in Geneva, Switzerland**

Authors: Roxane Dumont<sup>1</sup> M.Sc, Mayssam Nehme M.D<sup>2</sup>, Elsa Lorthe<sup>1</sup> RM Ph.D, Carlos de Mestral<sup>1</sup> Ph.D, Viviane Richard<sup>1</sup> M.Sc, H el ene Baysson<sup>1,3</sup> Ph.D, Francesco Pennacchio<sup>1</sup> PhD, Julien Lamour<sup>1</sup> M.Sc, Claire Semaani<sup>1</sup> M.A, Mar ia-Eugenia Zaballa<sup>1</sup> PhD, Nick Pullen<sup>1</sup> PhD, Anne Perrin M.D<sup>4</sup>, Arnaud G. L'Huillier M.D<sup>4</sup>, Klara M. Posfay-Barbe<sup>4</sup> M.D, M.Sc, Idris Guessous<sup>2,3\*</sup> M.D, Ph.D, Silvia Stringhini<sup>1,3,5\*</sup> Ph.D, on behalf of the Specchio-COVID19 study group.

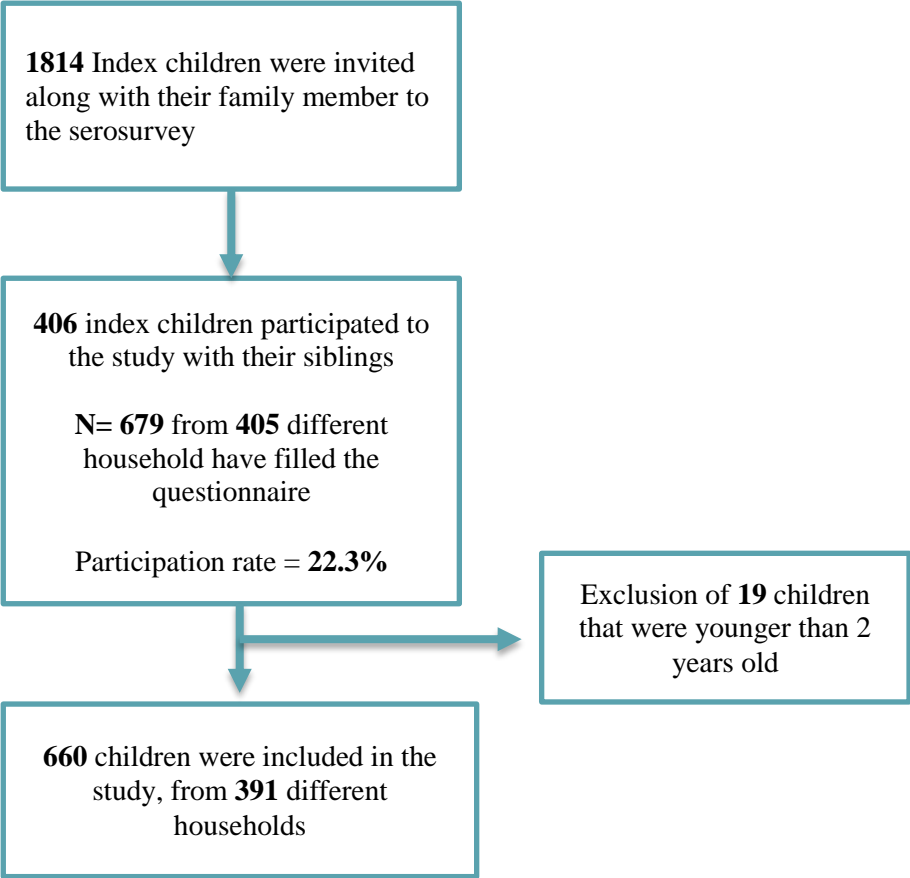
- 1 Unit of Population Epidemiology, Division of Primary Care Medicine, Geneva University Hospitals, Geneva, Switzerland
- 2 Division and Department of Primary Care Medicine, Geneva University Hospitals, Geneva, Switzerland
- 3 Department of Health and Community Medicine, Faculty of Medicine, University of Geneva, Geneva, Switzerland
- 4 Division of General Pediatrics, Department of Woman, Child, and Adolescent Medicine, Geneva University Hospitals, Switzerland
- 5 University Center for General Medicine and Public Health, University of Lausanne, Switzerland

\*Equal contribution

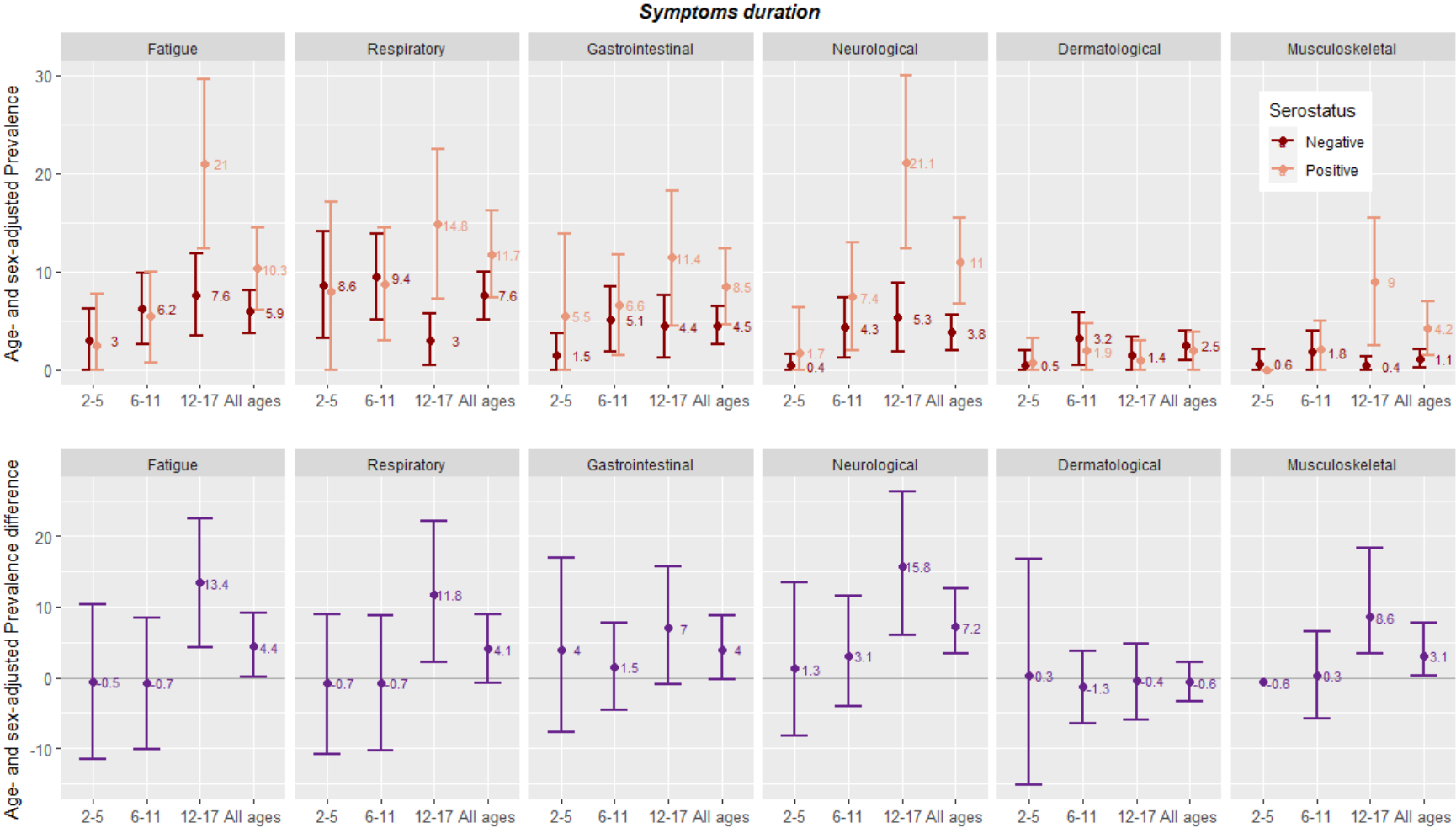
### **Specchio-COVID19 study group**

Isabelle Arm-Vernez, Andrew S Azman, Fatim Ba, Oumar Ba, Delphine Bachmann, Antoine Bal, Jean-Fran ois Balavoine, Michael Balavoine, R emy Barbe, H el ene Baysson, Lison Beigbeder, Julie Berthelot, Patrick Bleich, Ga elle Bryand, Fran ois Chappuis, Prune Collombet, Delphine Courvoisier, Alain Cudet, Carlos de Mestral Vargas, Paola D'ippolito, Richard Dubos, Roxane Dumont, Isabella Eckerle, Nacira El Merjani, Antoine Flahault, Natalie Francioli, Marion Frangville, Idris Guessous, S everine Harnal, Samia Hurst, Laurent Kaiser, Omar Kherad, Julien Lamour, Pierre Lescuyer, Fran ois L'Huissier, Fanny-Blanche Lombard, Andrea Jutta Loizeau, Elsa Lorthe, Chantal Martinez, Lucie M enard, Lakshmi Menon, Ludovic Metral-Boffod, Benjamin Meyer, Alexandre Moulin, Mayssam Nehme, Natacha No el, Francesco Pennacchio, Javier Perez-Saez, Didier Pittet, Jane Portier, Klara M Posfay-Barbe, G eraldine Poulain, Caroline Pugin, Nick Pullen, Zo Francia Randrianandrasana, Aude Richard, Viviane Richard, Frederic Rinaldi, Jessica Rizzo, Khadija Samir, Claire Semaani, Silvia Stringhini, St ephanie Testini, Jennifer Villers, Guillemette Violot, Nicolas Vuilleumier, Ania Wisniak, Sabine Yerly, Mar ia-Eugenia Zaballa

**Supplementary Figure S1:** Study flow diagram.



**Supplementary Figure S2: Age- and sex-adjusted prevalence of persistent symptoms, stratified by age group and serological status**



**Table S1. Description of symptoms**

Symptoms <sup>a</sup>	Seronegative n (%)	Seropositive n (%)	p-value <sup>b</sup>
<b>N</b>	453	207	
Fatigue	28 (6.2)	24 (11.5)	<b>0.026</b>
<i>Respiratory symptoms:</i>			
Cough	19 (4.2)	11 (5.3)	0.665
Sore throat	14 (3.1)	11 (5.3)	0.245
Runny nose	27 (5.9)	13 (6.2)	1.000
Difficulty breathing	1 (0.2)	2 (1.0)	0.487
Fever	13 (2.9)	13 (6.2)	0.062
<i>Gastrointestinal symptoms</i>			
Loss of appetite	11 (2.4)	7 (3.4)	0.664
Nausea	5 (1.1)	5 (2.4)	0.351
Vomiting	2 (0.4)	1 (0.5)	1.000
Constipation	4 (0.9)	4 (1.9)	0.450
Diarrhea	5 (1.1)	6 (2.9)	0.181
Weight loss	1 (0.2)	1 (0.5)	1.000
Stomach pain	10 (2.2)	6 (2.9)	0.797
<i>Musculoskeletal symptoms</i>			
Muscle pain	7 (1.5)	10 (4.8)	0.028
Joint pain	2 (0.4)	3 (1.4)	0.369
<i>Neurological Symptoms</i>			
Headache	13 (2.9)	23 (11.1)	<b>&lt;0.001</b>
Loss of smell	0 (0.0)	10 (4.8)	<b>&lt;0.001</b>
Loss of taste	0 (0.0)	8 (3.8)	<b>&lt;0.001</b>
Dizziness	0 (0.0)	1 (0.5)	0.689
Changes in vision	1 (0.2)	0 (0.0)	1.000
Shaking	1 (0.2)	1 (0.5)	1.000
Tingling	1 (0.2)	0 (0.0)	1.000
Confusion	4 (0.9)	4 (1.9)	0.450
Insomnia	6 (1.3)	2 (1.0)	0.992
Hypersomnia	0 (0.0)	2 (1.0)	0.184
<i>Cardiovascular symptoms</i>			
Palpitations	0 (0.0)	1 (0.5)	0.689
<i>Dermatological symptoms</i>			
Skin rashes	4 (0.9)	4 (1.9)	0.450
Itching skin	5 (1.1)	2 (1.0)	1.000
Redness skin	5 (1.1)	1 (0.5)	0.734

<sup>a</sup>Answers based on the question: "Since the start of the pandemic in Switzerland, has the child developed one or more symptoms (including fatigue) that have lasted at least two weeks?" If yes, which ones?

<sup>b</sup> Fisher's exact and Pearson's Chi-squared test between seronegative and seropositive

**Table S2. Age- and sex-adjusted prevalence of persistent symptoms, stratified by age group and serological status**

	2-5 years old			6-11 years old			12-17 years old		
	Seronegative N=118	Seropositive N=29	$\Delta$ aPrev	Seronegative N=180	Seropositive N=91	$\Delta$ aPrev	Seronegative N=155	Seropositive N=87	$\Delta$ aPrev
<b>Symptoms &gt; 2 weeks</b>	aPrev <sup>a,b</sup> 8.6 (3.2,14.1)	aPrev <sup>a,b</sup> 7.9 (0.0,17.1)	$\Delta$ aPrev -0.7 (-13.4,11.6)	aPrev <sup>a,b</sup> 12.4 (7.5,17.3)	aPrev <sup>a,b</sup> 11.9 (5.2,18.6)	$\Delta$ aPrev -0.5 (-8.2,7.1)	aPrev <sup>a,b</sup> 8.9 (4.4,13.4)	aPrev <sup>a,b</sup> 29.0 (19.4,38.7)	$\Delta$ aPrev 20.1** (10.6,29.7)
<b>Reported symptoms</b>									
Fatigue	3.0 (0.0,6.2)	2.5 (0.0,7.7)	-0.5 (-11.6,10.4)	6.2 (2.6,9.8)	5.5 (0.7,10)	-0.7 (-8.7,7.1)	7.6 (3.4,11.8)	21.0 (12.3,29.6)	13.4** (4.7,22.1)
Respiratory	8.6 (3.2,14.1)	7.8 (0.0,17.1)	-0.7 (-16.2,14.5)	9.4 (5.1,13.8)	8.7 (2.9,14.5)	-0.7 (-8.3,6.8)	3 (0.4,5.7)	14.8 (7.2,22.5)	11.8* (2.7,21.6)
Gastrointestinal	1.5 (0.0,3.7)	5.5 (0.0,13.8)	4.0 (-8.3,17.5)	5.1 (1.8,8.5)	6.6 (1.4,11.7)	1.5 (-4.8,8.2)	4.4 (1.2,7.6)	11.4 (4.5,18.2)	7.0 (-0.8,15.7)
Neurological	0.4 (0.0,1.6)	1.7 (0.0,6.3)	1.3 (-9.3,14.5)	4.3 (1.2,7.3)	7.4 (1.9,12.9)	3.1 (-4.7,12.2)	5.3 (1.8,8.8)	21.1 (12.3,29.9)	15.8** (5.6,26.7)
Dermatological	0.5 (0.0,2.0)	0.8 (0.0,3.2)	0.3 (-8.0,9.5)	3.2 (0.5,5.8)	1.9 (0.0,4.7)	-1.3 (-6.8,3.9)	1.4 (0.0,3.3)	1.0 (0.0,3.0)	-0.4 (-5.6,4.5)
Musculoskeletal	0.6 (0.0,2.1)	0.0 (0,0)	-0.6 undefined	1.8 (0.0,4.0)	2.1 (0.0,4.9)	0.3 (-4.9,5.5)	0.4 (0.0,1.3)	9.0 (2.4,15.5)	8.6** (3.9,18)
<b>Symptoms duration</b>									
2 to 3 weeks	2.7 (0.0,5.7)	7.1 (0.0,16.4)	4.4 (-6.3,17.2)	8.2 (4.1,12.2)	17.7 (9.8,25.6)	9.5* (1.9,17.3)	3.0 (0.4,5.7)	24.4 (15.2,33.6)	21.4** (12.0,31.4)
3 to 4 weeks	0.5 (0.0,1.9)	0.0 (0.0,0.0)	-0.5 undefined	1.4 (0.0,3.2)	0.0 (0.0,0.0)	-1.4 undefined	0.1 (0.0,0.5)	0.4 (0.0,1.2)	0.3 (1.5,16.6)
More than 4 weeks	3.8 (0.2,7.5)	0.0 (0.0,0.0)	-3.8 undefined	4.4 (1.4,7.4)	0.0 (0.0,0.0)	-4.4 undefined	1.1 (0.0,2.6)	5.5 (0.5,10.3)	4.4 (-3.8,13.6)

<sup>a</sup> Prevalence was computed using marginal prediction of logistic regression and 95% CI were computed using normal approximation and truncated to 0 for the aPRev.

<sup>b</sup> Prevalence was adjusted for sex and age

\* indicates p-value <0.05

\*\*indicates p-value <0.01

### **Additional information on the serological test**

The serological tests were based on commercially-available immunoassays Roche Elecsys anti-SARS-CoV-2 N immunoassay, which detects immunoglobulins (IgG/A/M) targeting the virus nucleocapsid (N) protein (#09 203 079 190, Roche-N) and has an in-house sensitivity of 99.8% (95% CrI, 99.4%-100%) and specificity of 99.1% (95% CI, 98.3%-99.7%) (Roche Diagnostics, Rotkreuz, Switzerland). We defined seropositivity using the manufacturer's provided cut-off index  $\geq 1.0$  for the Roche-N immunoassays.