

## **Quantitative detection of SARS-CoV-2 Omicron variant in wastewater through allele-specific RT-qPCR**

**Authors:** Wei Lin Lee (1,2), Xiaoqiong Gu (1,2), Federica Armas (1,2), Fuqing Wu (4,5), Franciscus Chandra (1,2), Hongjie Chen (1,2), Amy Xiao (4,5), Mats Leifels (3), Feng Jun Desmond Chua (3), Germaine WC Kwok (3), Joey YR Tay (1,2), Claire YJ Lim (1,2), Janelle Thompson (2,3,6)\*, Eric J Alm (1,2,4,5,7)\*

### **Author Affiliations:**

1: Antimicrobial Resistance Interdisciplinary Research Group, Singapore-MIT Alliance for Research and Technology, Singapore

2: Campus for Research Excellence and Technological Enterprise (CREATE), Singapore

3: Singapore Centre for Environmental Life Sciences Engineering, Nanyang Technological University, Singapore

4: Center for Microbiome Informatics and Therapeutics, Massachusetts Institute of Technology

5: Department of Biological Engineering, Massachusetts Institute of Technology

6: Asian School of the Environment, Nanyang Technological University, Singapore

7: Broad Institute of MIT and Harvard, Cambridge, MA, USA

**Key Words:** SARS-CoV-2; COVID-19; Variant; RT-qPCR; Wastewater; surveillance; Omicron

**Running title:** Quantitative SARS-CoV-2 Omicron variant tracking in wastewater

\* Correspondence to JT at [janelle.thompson@ntu.edu.sg](mailto:janelle.thompson@ntu.edu.sg) and EJA at [ejalm@mit.edu](mailto:ejalm@mit.edu)

## ABSTRACT

On November 26, 2021, the B.1.1.529 COVID-19 variant was named as the Omicron variant of concern. Reports of higher transmissibility and potential immune evasion triggered flight bans and heightened health control measures across the world to stem its distribution. Wastewater-based surveillance has demonstrated to be a useful complement for community-based tracking of SARS-CoV-2 variants. Using design principles of our previous assays that detect SARS-CoV-2 variants (Alpha and Delta), here we report an allele-specific RT-qPCR assay that simultaneously targets mutations Q493R, G496S and Q498R for quantitative detection of the Omicron variant in wastewater. This method is open-sourced and can be implemented using commercially available RT-qPCR protocols, and would be an important tool for tracking the spread and introduction of the Omicron variant in communities for informed public health responses.

## INTRODUCTION

The COVID-19 disease was first detected late December 2019 and rapidly spread globally, leading to the WHO declaring it a global pandemic by March 2020 (WHO, 2020). The etiological cause of this disease is the single-stranded RNA virus SARS-CoV-2 of the genus Betacoronavirus which also contains other human respiratory pathogens such as SARS-CoV and MERS-CoV (Pal et al., 2020). SARS-CoV-2 infection in the respiratory and gastrointestinal tract is mediated by the binding between viral spike protein (S) and human angiotensin-converting enzyme 2 (ACE-2) receptor (Zhou et al., 2020). Over the course of the pandemic, multiple SARS-CoV-2 variants emerged due to genetic mutation of the viral genome. While many variants contain inconsequential mutations, some obtained mutations that confer higher fitness through increased transmissibility and the ability to elude medical countermeasures such as vaccines (Harvey et al., 2021). These variants are deemed by the WHO as variants of concerns (VOCs) due to their increased risk (CDC, 2021). To date, WHO has classified five variants as VOCs. These include Alpha (B.1.1.7), Beta (B.1.351), Gamma (P.1) and the Delta (B.1.617.2) variant, which emerged from India in October 2020 and quickly became the predominant strain by mid-2021 (WHO, 2021a). The fifth VOC, Omicron (B.1.1.529) and descendent lineages were reported in multiple countries in November 2021.

The Omicron variant draws attention due to its high number of mutations, with 26-32 of them in the spike protein (WHO, 2021b). At the time of writing, the Omicron variant only makes up 10% of all COVID-19 cases but their rapid expansion in the South African region and global distribution amidst early reports of higher transmissibility and immune escape compared to the Delta variant has raised alarm for researchers and public health officials alike (Pulliam et al., 2021).

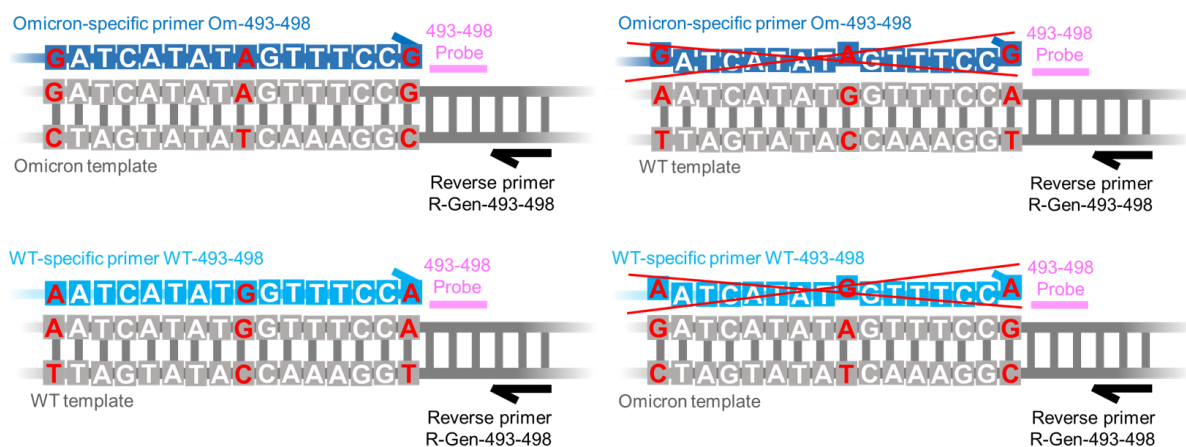
In light of the emergence of VOCs, surveillance efforts tracking their introduction and spread in both naive and vaccinated populations become important to fight the pandemic. Current widely-used method for variant surveillance involves sequencing of clinical samples. However, the accessibility of genomic sequencing is limited and unsustainable due to the high capital and operational costs and the specialised infrastructure requirements associated (Gwinn et al., 2019). Furthermore, a significant fraction of confirmed cases needs to be sequenced to generate a meaningful dataset. A complementary method of surveillance that has been drawing a lot of attention during this pandemic is wastewater-based surveillance (WBS). WBS promises a low-cost, real-time, and unbiased snapshot of entire populations within its catchment range (Polo et al., 2020; Thompson et al., 2020). It has been shown to be effective at determining SARS-CoV-2 circulation trends during this COVID-19 pandemic across different countries (Medema et al., 2020; Randazzo et al., 2020; Wu et al., 2021). Further, WBS has been used to track the introduction and spread of SARS-CoV-2 strains. Most of the efforts for variant tracking in wastewater rely on enriching and sequencing the environmental SARS-CoV-2 genome (Crits-Christoph et al., 2021; Fontenele et al., 2021; Napit et al., 2021). However, poor sensitivity towards low-frequency variants and the lack of quantitative modelling of the data generated limits widespread application (Van Poelvoorde et al., 2021). RT-qPCR-based methods targeting variant-specific mutants of the SARS-CoV-2 genome have been demonstrated for variant identification in clinical samples (Wang et al., 2021) and we and others have recently adapted and validated use of such assays for quantification of multiple variants in wastewater samples (Graber et al., 2021; Lee et al., 2021a, 2021b, 2021c; Yaniv et al., 2021). RT-qPCR methods enable differentiation of specific variant-linked mutations and are more sensitive than sequence-based approaches, allowing for their quantitation, and providing readily interpretable results within hours. However, designing assays for VOCs is a moving target since emerging VOCs may possess unique mutations that necessitate the development of new assays.

Our group has previously designed RT-qPCR-based methods for the detection of mutations associated with the Alpha variant and the Delta variant in wastewater (Lee et al., 2021a, 2021b, 2021c). The assays are designed based on principles of allele-specific (AS) qPCR (Petruska et al., 1988; Wu et al., 1989). Here, we develop a new set of AS RT-qPCR primers for the detection of the Omicron variant, simultaneously targeting loci Q493R, G496S and Q498R, which are currently specific for Omicron variant. This newly designed assay can be run as a singleplex or as a duplex with an earlier assay designed to target HV69-70del (Lee et al., 2021b, 2021c) for improved convenience.

## RESULTS AND DISCUSSION

In this work we explore and develop allele-specific (AS) RT-qPCR primers that could be used to detect and quantify the Omicron variant in wastewater. We have developed two approaches for Omicron detection, including (1) a new assay that is currently specific for mutations present in the spike gene in Omicron (**Figure 1**), and (2) targeting the locus 69-70 (HV69-70del) in Omicron, also in the spike gene, that is shared with the Alpha variant (GISAID, 2021a) (Lee et al., 2021b, 2021c). In the new Omicron specific assay, we simultaneously target Omicron mutations Q493R, G496S and Q498R. This stretch of mutations are present in most of the sequences (97.5%) classified as Omicron, and can be used to differentiate Omicron from other variants (**Table 1**). Initial validation with DNA and RNA templates demonstrate good sensitivity and specificity of this assay.

### Primer design



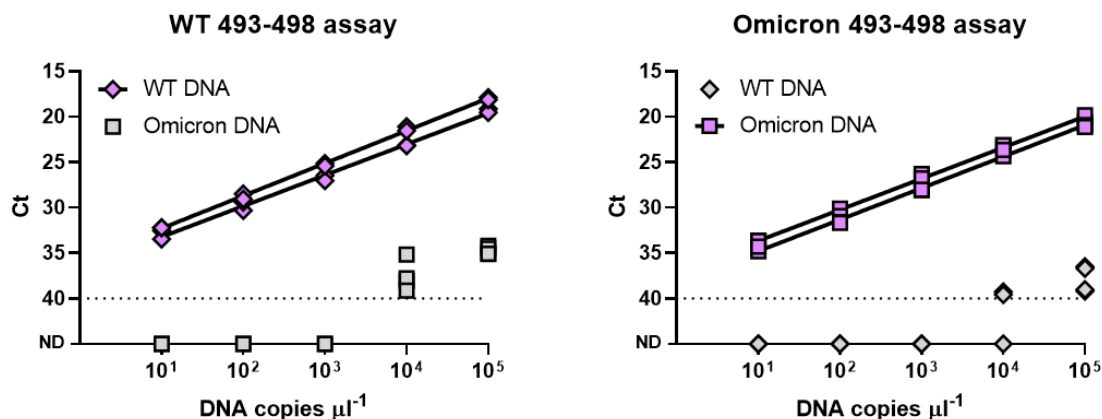
**Figure 1. Schematic of our panel of AS RT-qPCR assays.** (a) Each assay requires a common reverse primer (black) and probe (pink), paired with an Omicron-specific (dark blue) or WT (light blue) primer (dark blue) in the forward direction. Those allele-specific primers are designed to target the mutations of interest (red), with the mutations near the 3' end to enhance assay specificity.

Amino acid positions of targeted mutations	Frequency in Omicron variant	Frequency in WT (non-Omicron)
Spike protein Q493R,G496S, Q498R	97.5%	0.001%

**Table 1. Frequency of targeted mutations in SARS-CoV-2 Omicron variant.** SARS-CoV-2 sequences obtained within the last two months (19th Oct 2021 - 19th Dec 2021) were obtained from the GISAID database. The percentage of Omicron and wild-type (WT) (which includes all non-Omicron) genomes containing each target mutation were used as a gauge to determine reliability of assay at identifying the Omicron variant.

### **Specificity and cross-reactivity of AS RT-qPCR primers against DNA containing WT and Omicron sequences**

Assays for locus 69-70 were validated in an earlier work (Lee et al., 2021b, 2021c). Here we describe the validation of the approach that simultaneously targets loci Q493R, G496S and Q498R. The AS RT-qPCR assay developed was validated using synthetic DNA containing WT and Omicron sequences at these loci. We demonstrate the specificity for their respective WT and mutant targets at locus 493-498 by screening them against synthetic DNA containing sequences representing Omicron and non-Omicron (WT) genotypes (**Figure 2**). Cross-reactivity was observed at only  $10^4$  copies of DNA of the opposite genotype suggesting good specificity and selectivity towards the respective genotypes. (Figure 2). Amplification efficiencies were between 90% and 94% for the correct DNA (i.e., Omicron assay for DNA sequences representative of Omicron and WT assay for WT sequences).

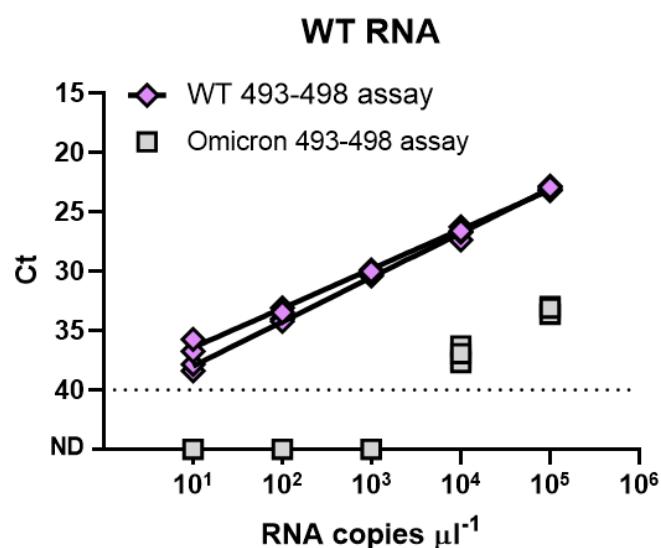


DNA template	WT	Mutant - Omicron
Assay	WT 493-498 assay	Omicron 493-498 assay
Intercept	35.86, 36.63	38.26, 37.08
Slope	-3.581, -3.401	-3.468, -3.425
Efficiency (%)	90.2, 96.8	94.2, 95.9
R <sup>2</sup>	0.998, 0.993	0.995, 0.995

**Figure 2. Specificity and cross-reactivity of AS RT-qPCR primers against the WT and the Omicron DNA sequences.** Purple diamonds and squares represent tests against the matching genotype (WT-specific primers to WT DNA and Omicron-specific primers to Omicron DNA), and grey diamonds and squares denote tests against DNA of the opposite genotype. The presented data reflect two sets of independent measurements taken on different days.

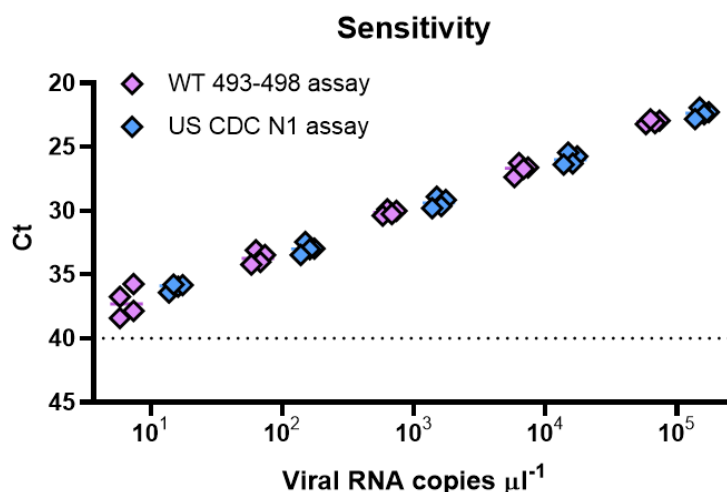
Besides the use of DNA templates, we tested our assay using synthetic WT RNA. As commercial Omicron variant RNA was not available in the laboratory at the time of this work, the primer-probe set developed was validated only against synthetic WT RNA (represented by Delta variant) (**Figure 3**). We use the performance (specificity and sensitivity) of the WT assay against WT RNA as a proxy to gauge how the Omicron assay would perform against Omicron RNA, given that the WT assay differs from the Omicron assay by only three nucleotides. The amplification efficiency for the WT RNA is 85.2% and 100% in two independent tests, respectively. The Omicron-specific assay does not cross-react with WT RNA at 10<sup>3</sup> copies and below and confers sufficient specificity for our

work given that the number of copies of SARS-CoV-2 RNA in each reaction containing RNA template from wastewater is typically below 1000 (Duvallet et al., 2021; Wu et al., 2022, 2021, 2020). Further, using cycle thresholds (Ct) as a proxy for the sensitivity of the assay (Figure 4), we compared Ct values to those of the U.S. CDC N1 assay and found comparable sensitivities for the same amount of input RNA across a 10,000-fold difference in target RNA concentrations.



<b>RNA template</b>	WT
<b>Assay</b>	WT 493-498 assay
<b>Intercept</b>	38.05, 40.02
<b>Slope</b>	-3.316, -3.735
<b>Efficiency (%)</b>	100, 85.2
<b>R<sup>2</sup></b>	0.996, 0.997

**Figure 3. Sensitivity of the WT AS RT-qPCR primers against WT RNA.** Purple diamonds represent tests against the matching genotype (WT-specific primers to WT RNA), and grey squares denote tests against RNA of the opposite genotype. The presented data reflect two sets of independent measurements taken on different days.



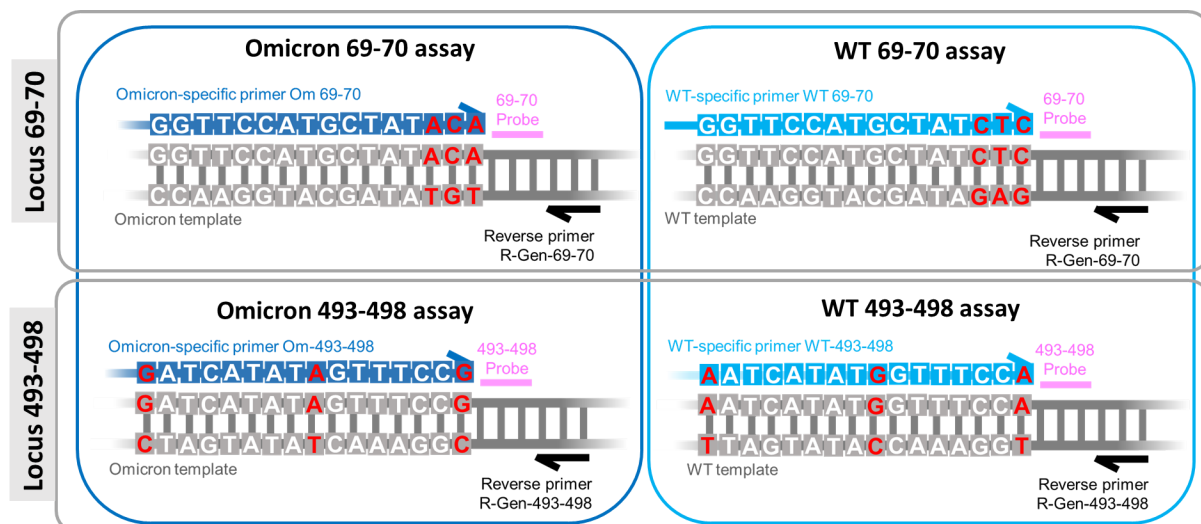
**Figure 4. Ct values for the AS RT-qPCR primers targeting 493-498 in comparison to the US CDC N1 assay.** Comparison of Ct values suggests similar sensitivity of AS RT-qPCR primers (purple diamonds) in comparison to US CDC N1 primers (blue diamonds). Primer-probe sets were tested with tenfold dilutions of their respective full-length synthetic WT SARS-CoV-2 RNA (represented by Delta RNA) in nuclease-free water. The data shown reflect two sets of independent measurements taken on different days.

## DISCUSSION

The study presented here proposes an AS RT-qPCR assay that has been developed for specific detection and quantitation of the SARS-CoV-2 Omicron variant of concern in wastewater samples. This assay simultaneously targets loci Q493R, G496S and Q498R. Both the WT (non-Omicron) and Omicron assays are highly specific and do not cross-react with DNA of the opposite genotype up to  $10^3$  and  $10^4$  copies, respectively. When tested against SARS-CoV-2 WT RNA, the WT assay has shown good amplification efficiency of above 85% and appears to have comparable sensitivity as the widely used US CDC N1 assay. The Omicron assay does not show non-specific cross reactions with WT RNA in concentrations of up to  $10^3$  copies. In all, the assay targeting locus 493-498 should possess sufficient sensitivity and specificity for accurate detection of the Omicron variant in wastewater.



We also mention that an allele-specific qPCR assay which has been previously developed and described for the Alpha variant (Lee et al., 2021b,c) could be used to indicate presence of the Omicron variant. This deletion at locus 69-70 is found in the Omicron variant and in areas with low prevalence of the Alpha variant, can be used to track dynamics of the Omicron variant, corroborating results from the Omicron-specific assay. While there may be ambiguity if a positive read out with this assay would signify the Alpha or the Omicron variant, as of late Dec 2021, less than 0.2% of newly reported sequences is attributed to the Alpha variant (GISAID, 2021b). This assay targeting 69-70 is highly specific and does not cross react with up to  $10^5$  copies of RNA of the opposite (WT) genotype (Lee et al., 2021b,c), while possessing comparable sensitivities to widely accepted US CDC N1/N2 assays. While not demonstrated in this work, assay 69-70 can be combined with the 493-498 assay described here, into a duplex for greater convenience of handling. Potential duplex combinations are shown in **Figure 5**.



**Figure 5. Potential duplex combination for detection of the Omicron variant at two loci - 69-70 and 493-498 on the spike gene.** The assay for the locus 69-70 has been developed in an earlier study on Alpha variant quantification (Lee et al., 2021a, 2021b). Two individual RT-qPCRs are needed to assay for variant frequencies at each locus, though the two assays can be combined in the same reaction as a duplex (dark blue box) and the two WT-specific assays in another duplex (light blue box).

While variant detection only requires performing the reaction that targets the mutated locus in the SARS-CoV-2 variant of concern, we present assays that target both

the WT and the mutant at the same loci. This way, quantification of both WT and mutant loci in wastewater allows us to determine the proportion of WT to the variant sequence at the target loci. Further, since at the time of this work, commercial Omicron variant RNA was not yet available in our laboratory, the performance of the Omicron assay is approximated using the WT assay as a proxy. WT and Omicron assays differ by only three nucleotides and hybridization kinetics are likely to be similar. This, however, constitutes a caveat for this work. Assays for the Omicron variant were validated on synthetic DNA carrying WT and Omicron sequences, and against synthetic WT SARS-CoV-2 RNA but not Omicron variant RNA. Further, these assays have not yet been validated against Omicron sequences in real wastewater samples. However, given the rapid increase in circulation of the Omicron VOC, we are sharing these assays and their initial validations for the benefit of the wider wastewater surveillance community. Detailed analytical validation against the Omicron variant RNA will be performed and reported as an update to this preprint.

## **MATERIALS AND METHODS**

**Determination of frequencies of targeted mutations in Omicron and (WT) non-Omicron strains.** A global masked alignment of SARS-CoV-2 sequences from GISAID aligned to the GISAID reference sequence WIV04 (Zhou et al., 2020) were downloaded on GISAID (19th Dec 2021). We analysed sequences from the recent two months (19th Oct 2021 - 19th Dec 2021). Among 1,082,005 sequences, 0.81% sequences were assigned as omicron strains (B.1.1.529 + BA.\*) and 99.2% were assigned as non-omicron strains.

### **Assay design**

We designed AS RT-qPCR reactions to detect a stretch of mutations in the SARS-CoV-2 spike gene. Primers and probes were designed following our previous work (Lee et al., 2021) and using the Integrated DNA Technologies (IDT)'s PrimerQuest Tool. Target mutations were placed near the 3' end of the forward primer. All primers were designed to have a melting temperature in the range of 59–65°C and the probes in the range of 64–72°C. Probes were designed to anneal to the same strand as the allele-specific primer, with the probe as close to the 3'-end of the Allele Specific (AS) primers as possible. Guanines are avoided at the 5'-end of the probe. WT primers are designed to bind to all

non-Omicron sequences. The probe for 493-498 is designed with mixed bases at two positions to enable binding to both WT (non-Omicron) and Omicron sequences. All primers and probes were purchased from IDT (**Table 2**).

**Table 2. AS RT-qPCR primer sequences.** Allele-specific nucleotides are marked bold. Gen denotes general (common primers), and are used in both WT and omicron-specific reactions. Om denotes Omicron, and is used in Omicron-specific reactions. WT denotes wild type, and is used for WT (non-Omicron)-specific reactions. If the assays were to be duplexed, one of the probes should be synthesised with a different fluorophore i.e. HEX.

Location and amino acid position(s)	Primer name	Oligonucleotide Sequence (5'>3')	Amplicon size (bp)	Reference
Spike protein HV69-70 deletion	F-WT-69-70 F-Om-69-70 Ps-Gen-69-70 R-Gen-69-70	ATGTTACTTGGTTCCATGCTAT <b>ACA</b> ATGTTACTTGGTTCCATGCTAT <b>CTC</b> /56-FAM/TCTCTGGGACCAATGGTACTAAGAG GT/3BHQ_1/ AAATGGTAGGACAGGGTTATCAA	77	Lee et al., 2021a,b
Spike protein 493-498	F-WT-493-498 F-Om-493-498 Ps-Gen-493-498 R-Gen-493-498	CTTTCCTTTAC <b>AAT</b> CATAT <b>GGT</b> TTCCA CTTTCCTTTAC <b>GAT</b> CATAT <b>AGT</b> TTCC <b>G</b> /56-FAM/ACCCACTWATGGTGTGGTYACCA/3 BHQ_1/ AGTTGCTGGTGCATGTAGAA	103	This paper

### Analysis of assays against DNA standards by qPCR

qPCR reactions were performed using TaqMan Fast Advanced Master Mix (ThermoFisher #4444556) at a final volume of 10 µL in duplicates, according to the manufacturer's recommendations with a final primer concentration of 0.5 µM and probe of 0.2 µM with 1 µL of DNA template, at 20 s at 95 °C, 40 cycles of 3 s at 95 °C and 30 s at 60 °C. A single reverse primer and probe was used with each allele-specific forward primer (**Table 3**).

**Table 3. Primers and probes in each assay**

Locus	Assay	Forward primer	Reverse primer	Probe
493-498	WT 493-498	F-WT-493-498	R-Gen-493-498	Ps-Gen-493-498
	Omicron 493-498	F-Om-493-498		

69-70	WT 69-70	F-WT-69-70	R-Gen-69-70	Ps-Gen-69-70
	Omicron 69-70	F-Om-69-70		

### RNA Standards and their quantification by RT-ddPCR

Twist synthetic SARS-CoV-2 RNA control 23 (Delta, B.1.617.2) was used as the RNA standard, as it contains the wild-type (WT) sequence at the three targeted mutant loci. RNA standards were prepared as single-use aliquots. Control 23 was quantified by digital droplet PCR (ddPCR) to be  $3.96 \times 10^5$  copies/ $\mu\text{L}$ . Quantification was performed using One-Step RT-ddPCR Advanced Kit for Probes #1864022 (Bio-Rad) following manufacturer's recommendations.

### Analysis of assays against RNA standards by RT-qPCR

AS RT-qPCR was performed using the Taqman Virus 1-Step master mix (Thermofisher #4444434) with technical duplicates, at a final volume of 10  $\mu\text{L}$ , according to the manufacturer's recommendations. A single reverse primer and probe was used with each allele-specific forward primer (**Table 3**). The final concentration of the AS RT-qPCR primers were 500 nM, probe at 200 nM, with 1  $\mu\text{L}$  of template. No template controls were included for each assay and none of them amplified. The reactions are setup using electronic pipettes (Eppendorf) and performed on a Bio-Rad CFX384 real-time PCR instrument under the following conditions, 5 min at 50 °C and 20 s at 95 °C, followed by 45 cycles of 3 s at 95 °C and 30 s at 60 °C.

**Table 5. Sequences of DNA standards used for validation of primer sets.** Yellow highlight demarcates binding of AS forward primer. Pink highlight demarcates binding of probe. Green highlight demarcates binding of reverse primer. Bold underlined denotes positions where nucleotides differ between the two sequences.

Name	Oligonucleotide Sequence (5'>3')	Size of DNA standard (bp)
WT S371, S373, S375, S477, E484, Q493, G496,	ATTTGCATCTGTTTATGCTTGG AACAGGAAGAGAATCAGCA ACTGTGTTGCTGATTATTCTGTCCTATATAAT <b>TCCGCAT</b> CATT TT <b>CC</b> ACTTTTAAAGTGTTATGGAG <b>GAAATCTATCAGGCCGGT</b> <b>AGCAAACCTTGTAATGGTGTG</b> <b>AAGGTTTTAATTGTTACTTT</b> <b>CCTTTACAATCATATGGTTCCA</b> <b>ACCCACTAATGGTGTGGT</b>	276

Q498, N501, Y505	TACCAACCATACAGAGTAGTAGTACTTTCTTTTGAACTTCTA CATGCACCAGCAAAGTGGTGGAC	
Omicron S371L, S373P, S375F, S477N, E484A, Q493R, G496S, Q498R, N501Y, Y505H	ATTTGCATCTGTTTATGCTTGGAACAGGAAGAGAATCAGCA ACTGTGTTGCTGATTATTCTGTCCTATATAATCTCGCACCAT TTTCACTTTTAAAGTGTATGGAGGAAATCTATCAGGCCGGTA ACAAACCTTGTAATGGTGTTCAGGTTTTAATTGTTACTTTC CTTTACGATCATATAGTTTCCGACCCACTTATGGTGTGGT CACCAACCATACAGAGTAGTAGTACTTTCTTTTGAACTTCTA CATGCACCAGCAAAGTGGTGGAC	276

### Data analysis

Frequency of targeted mutations was analysed using Python. qPCR data was analysed using Microsoft Excel and Graphpad Prism. Graphs were presented using Graphpad Prism.

### Data availability

Source data will be made available upon request.

### Declaration of competing interests

EJA is an advisor to Biobot Analytics and holds shares in the company.

### Funding Statement

This research is supported by the National Research Foundation, Prime Minister's Office, Singapore, under its Campus for Research Excellence and Technological Enterprise (CREATE) program funding to the Singapore-MIT Alliance for Research and Technology (SMART) Antimicrobial Resistance Interdisciplinary Research Group (AMR IRG) and the Intra-CREATE Thematic Grant (Cities) grant NRF2019-THE001-0003a to JT and EJA and funding from the Singapore Ministry of Education and National Research Foundation through an RCE award to Singapore Centre for Environmental Life Sciences Engineering (SCELS).

### Contributions

EJA and JT conceptualized the project. WLL designed the experiments. WLL, XG, FA, FC, HC, HC, FW, AX, ML, FJDC and GWCK analyzed the data. WLL, JYRT and CYJL performed

experiments. All authors contributed to writing the manuscript. WLL, JT and EJA supervised the project. All authors read and approved the manuscript.

## Acknowledgements

We thank members of the Biobot Analytics, Inc team for helpful discussions.

## REFERENCES

- CDC, 2021. SARS-CoV-2 Variant Classifications and Definitions [WWW Document]. URL <https://www.cdc.gov/coronavirus/2019-ncov/variants/variant-info.html> (accessed 7.9.21).
- Crits-Christoph, A., Kantor, R.S., Olm, M.R., Whitney, O.N., Al-Shayeb, B., Lou, Y.C., Flamholz, A., Kennedy, L.C., Greenwald, H., Hinkle, A., Hetzel, J., Spitzer, S., Koble, J., Tan, A., Hyde, F., Schroth, G., Kuersten, S., Banfield, J.F., Nelson, K.L., 2021. Genome Sequencing of Sewage Detects Regionally Prevalent SARS-CoV-2 Variants. *MBio* 12, e02703-20. <https://doi.org/10.1128/mBio.02703-20>
- Duvallet, C., Wu, F., McElroy, K.A., Imakaev, M., Endo, N., Xiao, A., Zhang, J., Floyd-O'Sullivan, R., Powell, M.M., Mendola, S., Wilson, S.T., Cruz, F., Melman, T., Sathyanarayana, C.L., Olesen, S.W., Erickson, T.B., Ghaeli, N., Chai, P., Alm, E., Matus, M., 2021. Nationwide trends in COVID-19 cases and SARS-CoV-2 wastewater concentrations in the United States. *medRxiv* 2021.09.08.21263283. <https://doi.org/10.1101/2021.09.08.21263283>
- Fontenele, R.S., Kraberger, S., Hadfield, J., Driver, E.M., Bowes, D., Holland, L.A., Faleye, T.O.C., Adhikari, S., Kumar, R., Inchausti, R., Holmes, W.K., Deitrick, S., Brown, P., Duty, D., Smith, T., Bhatnagar, A., Yeager, R.A., Holm, R.H., von Reitzenstein, N.H., Wheeler, E., Dixon, K., Constantine, T., Wilson, M.A., Lim, E.S., Jiang, X., Halden, R.U., Scotch, M., Varsani, A., 2021. High-throughput sequencing of SARS-CoV-2 in wastewater provides insights into circulating variants. *medRxiv* 2021.01.22.21250320. <https://doi.org/10.1101/2021.01.22.21250320>
- Graber, T.E., Mercier, É., Bhatnagar, K., Fuzzen, M., D'Aoust, P.M., Hoang, H.-D., Tian, X., Towhid, S.T., Plaza-Diaz, J., Eid, W., Alain, T., Butler, A., Goodridge, L., Servos, M., Delatolla, R., 2021. Near real-time determination of B.1.1.7 in proportion to total SARS-CoV-2 viral load in wastewater using an allele-specific primer extension PCR strategy. *Water Res.* 205, 117681. <https://doi.org/https://doi.org/10.1016/j.watres.2021.117681>

- GISAID, 2021a. Shared mutations [WWW Document]. URL <https://covariants.org/shared-mutations> (accessed 12.19.21).
- GISAID, 2021b. Tracking of variants [WWW Document]. URL <https://www.gisaid.org/hcov19-variants/> (accessed 21.19.21).
- Gwinn, M., MacCannell, D., Armstrong, G.L., 2019. Next-Generation Sequencing of Infectious Pathogens. *JAMA* 321, 893–894. <https://doi.org/10.1001/jama.2018.21669>
- Harvey, W.T., Carabelli, A.M., Jackson, B., Gupta, R.K., Thomson, E.C., Harrison, E.M., Ludden, C., Reeve, R., Rambaut, A., Peacock, S.J., Robertson, D.L., Consortium, C.-19 G.U.K. (COG-U., 2021. SARS-CoV-2 variants, spike mutations and immune escape. *Nat. Rev. Microbiol.* 19, 409–424. <https://doi.org/10.1038/s41579-021-00573-0>
- Lee, W.L., Gu, X., Armas, F., Chandra, F., Chen, H., Wu, F., Leifels, M., Xiao, A., Desmond Chua, F.J., Kwok, G.W.C., Jolly, S., Lim, C.Y.J., Thompson, J., Alm, E.J., 2021a. Quantitative SARS-CoV-2 tracking of variants Delta, Delta plus, Kappa and Beta in wastewater by allele-specific RT-qPCR. *medRxiv* 2021.08.03.21261298. <https://doi.org/10.1101/2021.08.03.21261298>
- Lee, W.L., Imakaev, M., Armas, F., McElroy, K.A., Gu, X., Duvallet, C., Chandra, F., Chen, H., Leifels, M., Mendola, S., Floyd-O’Sullivan, R., Powell, M.M., Wilson, S.T., Berge, K.L.J., Lim, C.Y.J., Wu, F., Xiao, A., Moniz, K., Ghaeli, N., Matus, M., Thompson, J., Alm, E.J., 2021b. Quantitative SARS-CoV-2 Alpha Variant B.1.1.7 Tracking in Wastewater by Allele-Specific RT-qPCR. *Environ. Sci. Technol. Lett.* <https://doi.org/10.1021/acs.estlett.1c00375>
- Lee, W.L., McElroy, K.A., Armas, F., Imakaev, M., Gu, X., Duvallet, C., Chandra, F., Chen, H., Leifels, M., Mendola, S., Floyd-O’Sullivan, R., Powell, M.M., Wilson, S.T., Wu, F., Xiao, A., Moniz, K., Ghaeli, N., Matus, M., Thompson, J., Alm, E.J., 2021c. Quantitative detection of SARS-CoV-2 B.1.1.7 variant in wastewater by allele-specific RT-qPCR. *medRxiv* 2021.03.28.21254404. <https://doi.org/10.1101/2021.03.28.21254404>
- Medema, G., Heijnen, L., Elsinga, G., Italiaander, R., Brouwer, A., 2020. Presence of SARS-Coronavirus-2 RNA in Sewage and Correlation with Reported COVID-19 Prevalence in the Early Stage of the Epidemic in The Netherlands. *Environ. Sci. Technol. Lett.* <https://doi.org/10.1021/acs.estlett.0c00357>
- Napit, R., Manandhar, P., Chaudhary, A., Shrestha, B., Poudel, A., Raut, R., Pradhan, S., Raut, S., Mathema, S., Rajbhandari, R., Dixit, S., Schwind, J.S., Johnson, C.K., Mazet, J.K., Karmacharya, D., 2021. Rapid genomic surveillance of SARS-CoV-2

in a dense urban community using environmental (sewage) samples. medRxiv 2021.03.29.21254053. <https://doi.org/10.1101/2021.03.29.21254053>

Pal, M., Berhanu, G., Desalegn, C., Kandi, V., 2020. Severe Acute Respiratory Syndrome Coronavirus-2 (SARS-CoV-2): An Update. *Cureus* 12, e7423–e7423. <https://doi.org/10.7759/cureus.7423>

Petruska, J., Goodman, M.F., Boosalis, M.S., Sowers, L.C., Cheong, C., Tinoco, I.J., 1988. Comparison between DNA melting thermodynamics and DNA polymerase fidelity. *Proc. Natl. Acad. Sci. U. S. A.* 85, 6252–6256. <https://doi.org/10.1073/pnas.85.17.6252>

Polo, D., Quintela-Baluja, M., Corbishley, A., Jones, D.L., Singer, A.C., Graham, D.W., Romalde, J.L., 2020. Making waves: Wastewater-based epidemiology for COVID-19 – approaches and challenges for surveillance and prediction. *Water Res.* 186, 116404. <https://doi.org/https://doi.org/10.1016/j.watres.2020.116404>

Pulliam, J.R.C., van Schalkwyk, C., Govender, N., von Gottberg, A., Cohen, C., Groome, M.J., Dushoff, J., Mlisana, K., Moultrie, H., 2021. Increased risk of SARS-CoV-2 reinfection associated with emergence of the Omicron variant in South Africa. medRxiv 2021.11.11.21266068. <https://doi.org/10.1101/2021.11.11.21266068>

Randazzo, W., Truchado, P., Cuevas-Ferrando, E., Simón, P., Allende, A., Sánchez, G., 2020. SARS-CoV-2 RNA in wastewater anticipated COVID-19 occurrence in a low prevalence area. *Water Res.* 181, 115942. <https://doi.org/10.1016/j.watres.2020.115942>

Thompson, J.R., Nancharaiah, Y. V, Gu, X., Lee, W.L., Rajal, V.B., Haines, M.B., Girones, R., Ng, L.C., Alm, E.J., Wuertz, S., 2020. Making waves: Wastewater surveillance of SARS-CoV-2 for population-based health management. *Water Res.* 184, 116181. <https://doi.org/10.1016/j.watres.2020.116181>

Van Poelvoorde, L.A.E., Delcourt, T., Coucke, W., Herman, P., De Keersmaecker, S.C.J., Saelens, X., Roosens, N., Vanneste, K., 2021. Strategy and performance evaluation of low-frequency variant calling for SARS-CoV-2 in wastewater using targeted deep Illumina sequencing. medRxiv 2021.07.02.21259923. <https://doi.org/10.1101/2021.07.02.21259923>

Wang, H., Miller, J.A., Verghese, M., Sibai, M., Solis, D., Mfuh, K.O., Jiang, B., Iwai, N., Mar, M., Huang, C., Yamamoto, F., Sahoo, M.K., Zehnder, J., Pinsky, B.A., 2021. Multiplex SARS-CoV-2 Genotyping PCR for Population-Level Variant Screening and Epidemiologic Surveillance. *J. Clin. Microbiol.* 59. <https://doi.org/10.1101/2021.04.20.21255480>



- WHO, 2020. WHO Director-General's opening remarks at the media briefing on COVID-19 - 11 March 2020 [WWW Document]. URL <https://www.who.int/director-general/speeches/detail/who-director-general-s-opening-remarks-at-the-media-briefing-on-covid-19---11-march-2020> (accessed 12.19.21).
- WHO, 2021a. Tracking SARS-CoV-2 variants [WWW Document]. URL <https://www.who.int/en/activities/tracking-SARS-CoV-2-variants/> (accessed 12.19.21).
- WHO, 2021b. Enhancing Readiness for Omicron (B.1.1.529): Technical Brief and Priority Actions for Member States [WWW Document]. URL [https://www.who.int/publications/m/item/enhancing-readiness-for-omicron-\(b.1.1.529\)-technical-brief-and-priority-actions-for-member-states](https://www.who.int/publications/m/item/enhancing-readiness-for-omicron-(b.1.1.529)-technical-brief-and-priority-actions-for-member-states) (accessed 12.19.21).
- Wu, D.Y., Ugozzoli, L., Pal, B.K., Wallace, R.B., 1989. Allele-specific enzymatic amplification of beta-globin genomic DNA for diagnosis of sickle cell anemia. *Proc. Natl. Acad. Sci. U. S. A.* 86, 2757–2760. <https://doi.org/10.1073/pnas.86.8.2757>
- Yaniv, K., Ozer, E., Shagan, M., Lakkakula, S., Plotkin, N., Bhandarkar, N.S., Kushmaro, A., 2021. Direct RT-qPCR assay for SARS-CoV-2 variants of concern (Alpha, B.1.1.7 and Beta, B.1.351) detection and quantification in wastewater. *Environ. Res.* 201, 111653. <https://doi.org/10.1016/j.envres.2021.111653>
- Wu, F., Xiao, A., Zhang, J., Moniz, K., Endo, N., Armas, F., Bonneau, R., Brown, M.A., Bushman, M., Chai, P.R., Duvallet, C., Erickson, T.B., Foppe, K., Ghaeli, N., Gu, X., Hanage, W.P., Huang, K.H., Lee, W.L., Matus, M., McElroy, K.A., Nagler, J., Rhode, S.F., Santillana, M., Tucker, J.A., Wuertz, S., Zhao, S., Thompson, J., Alm, E.J., 2022. SARS-CoV-2 RNA concentrations in wastewater foreshadow dynamics and clinical presentation of new COVID-19 cases. *Sci. Total Environ.* 805, 150121. <https://doi.org/https://doi.org/10.1016/j.scitotenv.2021.150121>
- Wu, F., Xiao, A., Zhang, J., Moniz, K., Endo, N., Armas, F., Bushman, M., Chai, P.R., Duvallet, C., Erickson, T.B., Foppe, K., Ghaeli, N., Gu, X., Hanage, W.P., Huang, K.H., Lee, W.L., Matus, M., McElroy, K.A., Rhode, S.F., Wuertz, S., Thompson, J., Alm, E.J., 2021. Wastewater Surveillance of SARS-CoV-2 across 40 U.S. states. *medRxiv* 2021.03.10.21253235. <https://doi.org/10.1101/2021.03.10.21253235>
- Wu, F., Zhang, J., Xiao, A., Gu, X., Lee, W.L., Armas, F., Kauffman, K., Hanage, W., Matus, M., Ghaeli, N., Endo, N., Duvallet, C., Poyet, M., Moniz, K., Washburne, A.D., Erickson, T.B., Chai, P.R., Thompson, J., Alm, E.J., 2020. SARS-CoV-2 Titers in Wastewater Are Higher than Expected from Clinically Confirmed Cases. *mSystems* 5, e00614-20. <https://doi.org/10.1128/mSystems.00614-20>

Zhou, P., Yang, X.-L., Wang, X.-G., Hu, B., Zhang, L., Zhang, W., Si, H.-R., Zhu, Y., Li, B., Huang, C.-L., Chen, H.-D., Chen, J., Luo, Y., Guo, H., Jiang, R.-D., Liu, M.-Q., Chen, Y., Shen, X.-R., Wang, X., Zheng, X.-S., Zhao, K., Chen, Q.-J., Deng, F., Liu, L.-L., Yan, B., Zhan, F.-X., Wang, Y.-Y., Xiao, G.-F., Shi, Z.-L., 2020. A pneumonia outbreak associated with a new coronavirus of probable bat origin. *Nature* 579, 270–273. <https://doi.org/10.1038/s41586-020-2012-7>