

1 **Comparative effectiveness of the BNT162b2 vs ChAdOx1 vaccine against Covid-19**

2 **Authors**

3 Junqing xie,¹ Shuo Feng,² Xintong Li,¹ Ester Gea-Mallorquí,³ Albert Prats-Urbe,¹ Dani Prieto-
4 Alhambra¹

- 5 1. Centre for Statistics in Medicine, NDORMS, University of Oxford, Oxford, UK
6 2. Oxford Vaccine Group, Department of Paediatrics, University of Oxford, UK
7 3. Nuffield Department of Clinical Medicine, University of Oxford, Oxford, UK

8 Corresponding author: Prof Daniel Prieto-Alhambra, Botnar Research Centre, Windmill Road,
9 OX37LD, Oxford, UK, daniel.prietoalhambra@ndorms.ox.ac.uk

10 **Abstract**

11 Although pivotal trials with varying populations and study methods suggest higher efficacy for mRNA
12 than adenoviral Covid-19 vaccines, no direct evidence is available. Here, we conducted a head-to-
13 head comparison of BNT162b2 versus ChAdOx1 against Covid-19. We analysed 235,181 UK Biobank
14 participants aged 50 years or older and vaccinated with one or two doses of BNT162b2 or ChAdOx1.
15 People were followed from the vaccination date until 18/10/2021. Inverse probability weighting was
16 used to minimise confounding and the Cox models to derive hazard ratio. We found that, compared
17 with two doses of ChAdOx1, vaccination with BNT162b2 was associated with 30% lower risks of both
18 SARS-CoV-2 infection and related hospitalisation during the period dominated by the delta variant.
19 Also, this comparative effectiveness was consistent across several subgroups and persisted for at
20 least six months, suggesting no differential waning between the two vaccines. Our findings can
21 inform evidence-based Covid-19 vaccination campaigns and booster strategies.

22

23 **Introduction**

24 To date, four vaccines against the Coronavirus disease 2019 (Covid-19) have been approved for use
25 in the UK by the Medicines and Healthcare products Regulatory Agency: the Pfizer-BioNTech
26 BNT162b2, Moderna's mRNA-1273, Oxford-AstraZeneca's ChAdOx1, and Janssen's Ad26.CoV2.S.
27 Although phase 3 trials suggested that all four have high clinical efficacy, mRNA vaccines
28 demonstrated numerically greater efficacy than adenoviral-based ones: BNT162b2 reported 95%
29 efficacy against symptomatic covid-19,¹ mRNA-1273 94.1% efficacy,² whilst ChAdOx1 had 70.4%,³
30 and Ad26.CoV2.S had 66.9% efficacy.⁴ However, notable differences in study designs made it difficult
31 to compare vaccine efficacy based on these trials, including different populations recruited in
32 different regions and at different times, diverse primary endpoint definitions, and heterogeneous
33 statistical analysis methods.

34 Specific for the two more widely utilized vaccines, BNT162b2 and ChAdOx1, several observational
35 studies have recently evaluated their effectiveness in multiple real-world settings from Israel,⁵ the
36 UK,⁶ and Spain,⁷ amongst others. Although useful, none of these studies conducted head-to-head
37 comparisons of vaccine effectiveness. With the ongoing pandemic and rapid rollout of the Covid-19
38 vaccination programme all over the world, evidence on their comparative performance has become
39 more crucial to inform policy decisions on optimizing vaccine implementation strategies, not only in
40 countries where greater coverage of the prime dose is urgently required or in countries where boost
41 doses and sequential immunization are being considered. Therefore, this study aimed to estimate
42 the comparative effectiveness of BNT162b2 vs ChAdOx1 vaccines against Covid-19 infection and
43 hospitalization in a large and rich prospective cohort of people aged 50 years or older.

44

45

46 **Results**

47 *Data linkage and study cohorts*

48 During the one-dose enrolment period, 70,097 and 98,551 people received the first BNT162b2 and
49 ChAdOx1 Covid-19 vaccines, respectively. These figures were 67,813 and 89,030 accordingly for
50 people receiving the second dose during the two-dose enrolment period. Vaccine uptake over
51 calendar time in our study population is depicted in **Figure 1**.

52 *Baseline characteristics*

53 In the one-dose vaccine cohorts, people receiving BNT162b2 were slightly older (mean (sd) age:
54 71.35 (7.21) years) than those receiving ChAdOx1 (mean (sd) age: 71.06 (6.02) years). Sex (44.5% vs
55 44.1% male) and ethnicity (91.2% vs 92.6% White) were comparable between the two groups. Little
56 difference was seen in the prevalence of medicines or comorbidities. The main differences between
57 cohorts were vaccination dates and socio-economic factors such as income (**Figure 2** and
58 **Supplementary Table 2**). Similar patterns of baseline characteristic differences were also seen in the
59 two-dose comparison cohorts (**Figure 2** and **Supplementary Table 3**). All covariates were balanced
60 after IPW weighting with an absolute standardised mean difference < 0.1, including the date of
61 vaccination.

62 *Incidence and hazard ratio*

63 Over the 14,630 and 20,714 person-years of follow-up for the one dose BNT162b2 and ChAdOx1
64 recipient, 200 and 261 people tested positive for SARS-CoV-2, equivalent to incidence rates (IR) of
65 13.7 and 12.6/1,000 person-years, respectively, and an unadjusted hazard ratio (HR) of 1.08 (95%
66 0.90 - 1.30). After inverse probability weighting, the HR changed to 0.72 (95% 0.58 - 0.88), favouring
67 BNT162b2 in the overall population (**Table 1**). In contrast, the incidences of Covid-19 hospitalisation
68 were similar among the one dose BNT162b2 (IR: 3.07 per 1,000 person-years) and ChAdOx1 (IR: 2.17
69 per 1,000 person-years) cohorts, with no noticeable differences between both vaccine groups:
70 adjusted/weighted HR 0.87 (95% 0.53 - 1.41).

71 After the second dose, 1,361/34,991 person-years (IR: 38.9 per 1,000 person-years) and
72 2,497/44,084 person-years (IR: 56.6 per 1,000 person-years) were identified positive for SARS-CoV-2
73 among BNT162b2 and ChAdOx1 recipients respectively. Unadjusted (0.72, 95% 0.57 - 0.91) and
74 adjusted HR (0.70, 95% 0.65 - 0.75) were almost identical, favouring BNT162b2 (**Table 1**). The rates
75 of Covid-19 hospitalisation remained low in both cohorts, but higher amongst ChAdOx1 (IR: 4.55 per
76 1,000 person-years) compared to BNT162b2 recipients (IR: 3.47 per 1,000 person-years), with
77 adjusted HR of 0.71 (95% 0.55 - 0.90) favouring BNT162b2.

78 *Kaplan–Meier curve of Covid-19 infection and hospitalisation*

79 Kaplan–Meier curves stratified by vaccine depicted similar trends between Covid-19 infection and
80 hospitalisation. The cumulative incidence after the first dose increased rapidly in the early follow-up
81 but flattened later until 14 weeks after vaccination (**Figure 3**), corresponding to the calendar period
82 from January to March 2021 (**Supplementary Figure 1**). Conversely, the trend of cumulative
83 incidence was reversed for the two-dose cohorts, with a substantial increase starting 12 weeks after
84 the second dose (Figure 3), corresponding to the calendar period from June to October 2021
85 (**Supplementary Figure 1**). Changes in community transmission over time in the general population
86 of England and among UK Biobank participants are shown in **Supplementary Figure 1**.

87 *Comparative effectiveness across sub-populations and over-time*

88 The risk of Covid-19 infection was consistently lower in people receiving two doses of BNT162b2
89 compared to those receiving two doses of ChAdOx1 across all strata. HRs ranged from 0.65 (95%
90 0.59 - 0.71) for females to 0.80 (95% 0.70 - 0.90) for oldest-old adults.

91 Notably, incidence rates of Covid-19 infection increased substantially during the study period, from
92 3.93 and 4.87 per 1,000 person-years at the 0–4-week window to 74.74 and 111.87 per 1,000
93 person-years at the >24-week window in BNT162b2 and ChAdOx1 cohorts, respectively. However,
94 as reflected by HRs, the comparative risks were stable for at least six months (**Figure 4**). Although a
95 similar pattern was observed for Covid-19 hospitalisation, power was limited for the time-split
96 analysis, in particular for the 0–4-week window (HR: 0.16, 95% 0.02 - 1.54) and 4–8-week window
97 (HR: 2.48, 95% 0.16 - 39.66), due to the extremely rare events observed in the first few weeks after
98 the second vaccination (**Figure 4**).

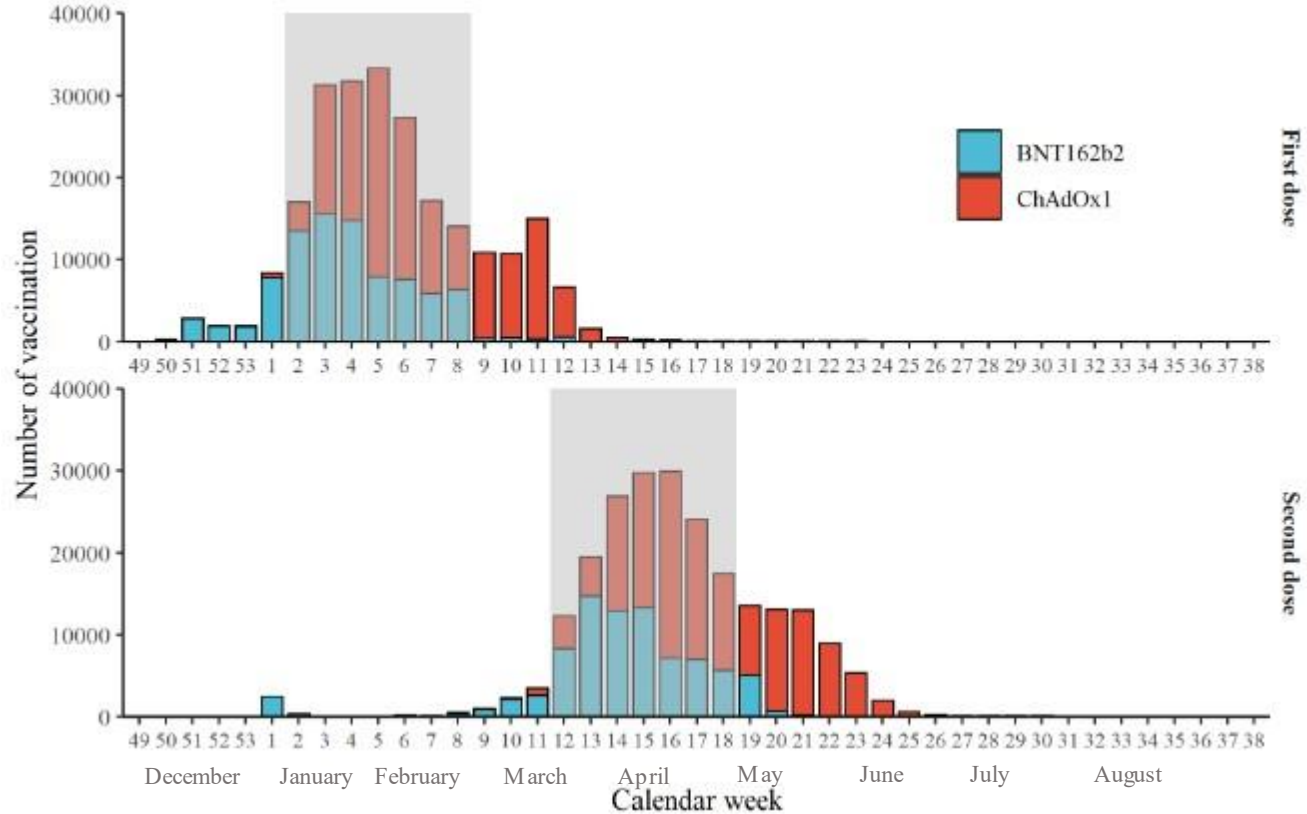
99 *Negative control and sensitivity analyses*

100 Adjusted hazard ratios for proposed negative clinical outcomes according to vaccine received among
101 the one dose cohort were 1.01 (0.95 to 1.17) for limb pain, 0.93 (0.82 to 1.05) for fracture, and 0.88
102 (0.51 to 1.51) for peptic ulcer.

103 The main results were consistent in the propensity score-matched cohorts with slightly wider
104 confidence intervals (**Supplementary Table 4**).

105 Main tables and figures

106 Figure 1: The number of people receiving either BNT162b2 or ChAdOx1 Covid-19 vaccine in the study cohort from Dec 01, 2020 to Sep 21, 2021.

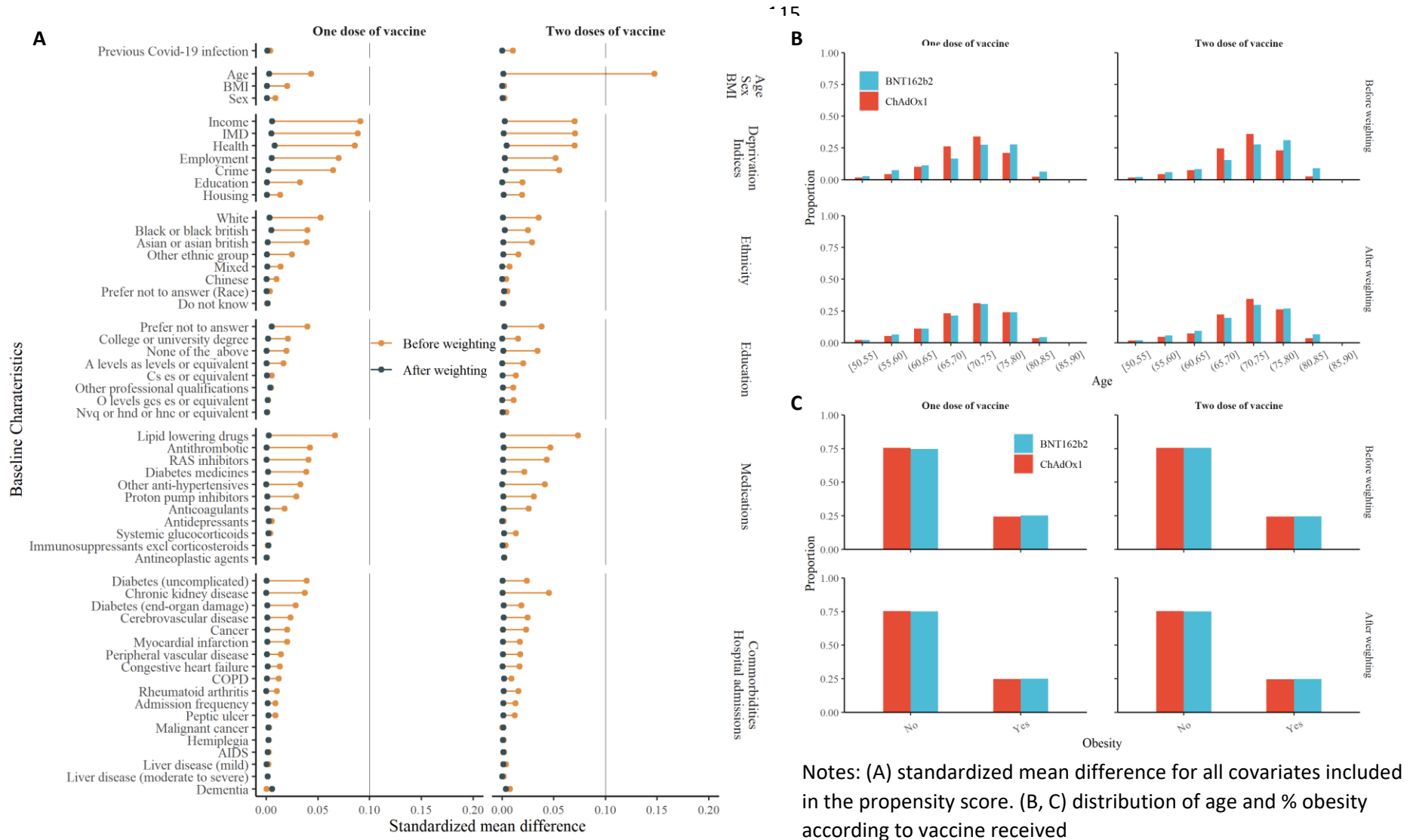


107

108 The rectangle background with grey color depicts the vaccination anchor windows. Only people who received study vaccines within the anchor windows
 109 were included for the comparative analysis. We defined the 2nd to 8th (Jan 11, 2021 to Feb 28, 2021) and 12th to 18th (March 22, 2021 to May 9, 2021)
 110 calendar weeks as the two anchor windows for the one-dose and two-dose cohorts, respectively. The decision-making for these anchor windows was based
 111 on (1) there were both BNT162b2 and ChAdOx1 vaccines delivered in each epidemiological week of the window, (2) numbers of the two vaccines were
 112 generally comparable, and (3) UK's policy on the gap between the first and second dose was 10 to 12 weeks for both vaccines.

113

114 **Figure 2: Balance of baseline covariates for the one dose and two doses cohorts, before and after weighting.**



Notes: (A) standardized mean difference for all covariates included in the propensity score. (B, C) distribution of age and % obesity according to vaccine received

119

120 **Table 1: Incidence rate and hazard ratio of COVID-19 infection and hospitalisation following one and two doses of vaccines.**

121

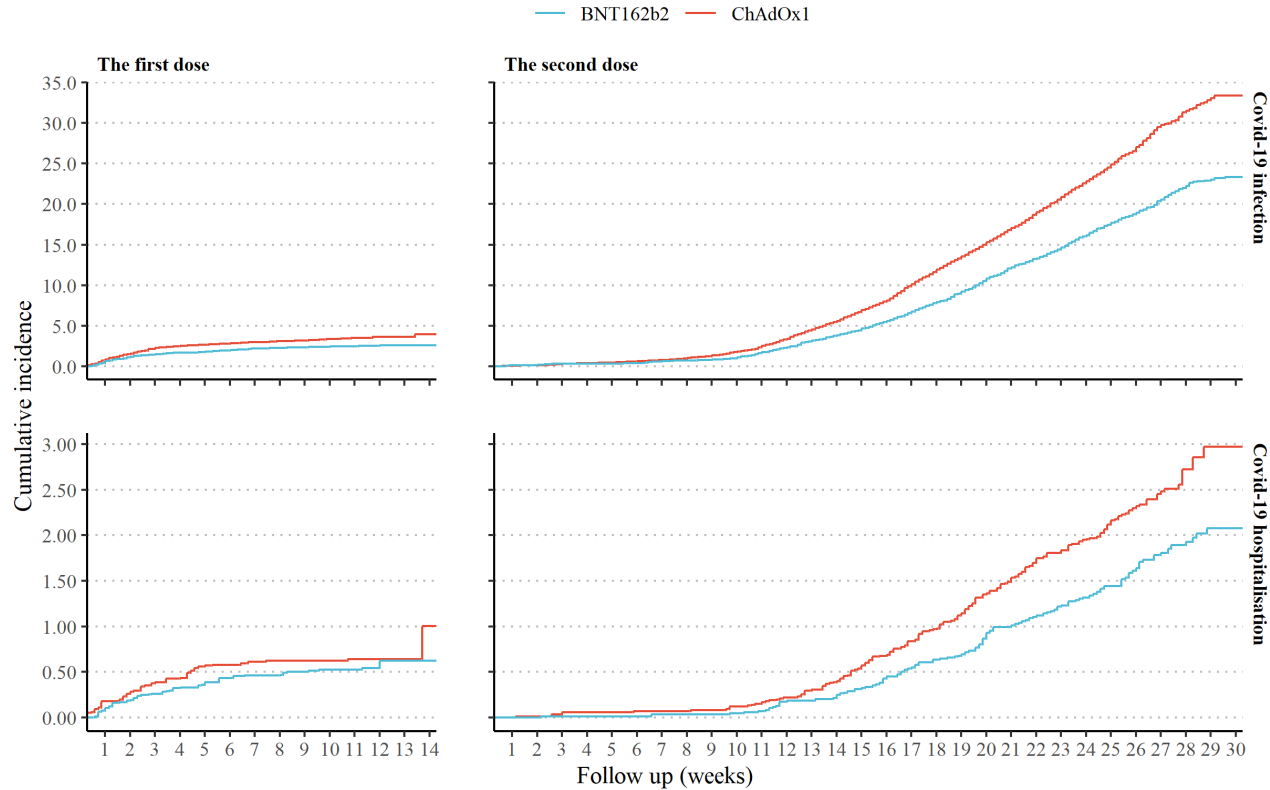
	BNT162b2			ChAdOx1				
	Vaccination years	Cases	Rate, per 1000 PYs	Vaccination years	Cases	Rate, per 1000 PYs	Unadjusted hazard ratio	Adjusted hazard ratio
One dose								
Covid-19 infection	14630	200	13.7	20714	261	12.6	1.08 (0.90 - 1.30)	0.72 (0.58 - 0.88)
Covid-19 hospitalisation	14654	45	3.07	20746	45	2.17	1.41 (0.95 - 2.09)	0.87 (0.53 - 1.41)
Two doses								
Covid-19 infection	34991	1361	38.9	44084	2497	56.6	0.72 (0.57 - 0.91)	0.70 (0.65 - 0.75)
Covid-19 hospitalisation	35176	122	3.47	44421	202	4.55	0.66 (0.62 - 0.71)	0.71 (0.55 - 0.90)

122 PYs: person-years

123

124

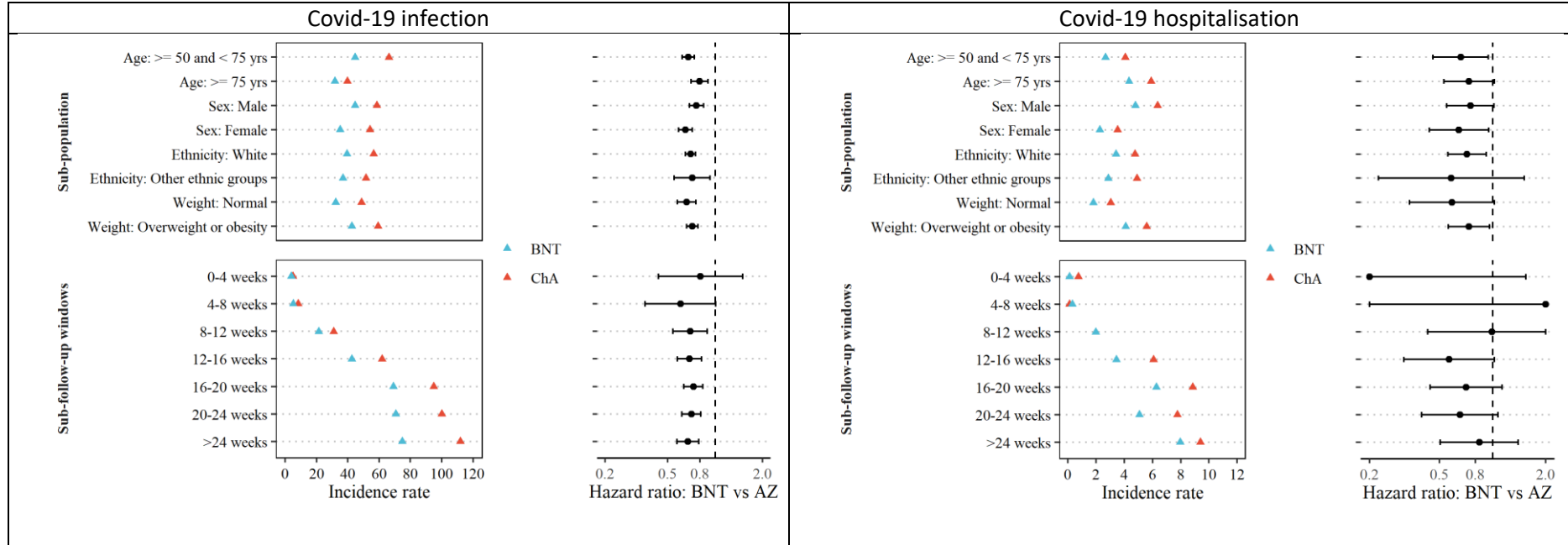
125 **Figure 3: Kaplan-Meier cumulative incidence curves of Covid-19 infection and hospitalization after one and two doses of vaccines.**



126
 127 Notes: The different Y-axis scales for Covid-19 infection and hospitalisation outcomes. The longest follow-up was 14 weeks after the first dose and 30 weeks
 128 after the second dose of the vaccine.
 129

130

131 **Figure 4: Comparative effectiveness of two doses BNT162b2 vs ChAdOx1 vaccine on Covid-19 infection and hospitalisation across key subgroups and**
 132 **over time.**



133 Notes: The different X-axis range of incidence rate for the Covid-19 infection and hospitalisation outcomes (unit, per 1000 person-years). Hazard ratios for
 134 Covid-19 hospitalisation were truncated at 0.2 (lowest) and 2 (highest).

135

136

137

138

139 Discussion

140 Among adults aged 50 years and older, we found that people receiving two doses of BNT162b2
141 vaccine had 30% lower risks of both Covid-19 diagnosis and related hospital admission, compared
142 with those vaccinated with ChAdOx1. A similar difference was also observed among the one dose
143 recipients, yet, only for Covid-19 diagnosis. Notably, the two-dose comparative effectiveness was
144 consistent across several high-risk groups, such as oldest-old,⁷ male,⁸ ethnic minority⁹ and those with
145 overweight or obesity,¹⁰ and persisted over time for over six months.

146 To date, only two Phase 2 randomized controlled trial has directly compared the efficacy of mRNA
147 with adenovirus-based Covid-19 vaccines by using immunogenic endpoints. Liu et al.¹¹ found that
148 the BNT162B2-BNT162B2 appeared more immunogenic than the ChAdOx1-ChAdOx1 schedule, with
149 higher levels of antibodies at 28 days after the first and second dose. A similar finding was reported
150 in the Borobia et al. study comparing the heterologous BNT162B2-ChAdOx1 and the homogenous
151 ChAdOx1-ChAdOx1 vaccine regimens.^{12,13} In line with this evidence, our study showed a lower risk of
152 Covid-19 outcomes in people vaccinated with BNT162b2 overall and across subgroups.

153 However, a recent preprint study by Hulme et al.¹⁴ showed no difference among recipients of these
154 two vaccines regarding the risk of SARS-CoV-2 positive test, COVID-19 related accident & emergency
155 attendance and hospital admission. Several fundamental factors might explain the disagreement
156 with our results. First, Hulme's study only included health and social care workers who are more
157 likely to be exposed to SARS-CoV-2 than our cohort: a community-based "healthy volunteer"
158 population,¹⁵ which was corroborated by the higher infection rate in their study (58 per 1,000
159 person-years) compared to ours (~13 per 1,000 person-years) during the first few weeks following
160 the first dose. Second, both our and Hulme's studies found that, on average, vaccination with
161 BNT162B2 happened earlier than ChAdOx1. Given the variation over time in community
162 transmission in England (**Supplementary Figure 1**), insufficient control for vaccination date can result
163 in an inflated risk of COVID-19 amongst BNT162B2 recipients. Informed by this, we observed a
164 substantial change of hazard ratio after the complete alignment of the first vaccination date by
165 weighting in our study. Thirdly, Hulme's risk assessment period started from the first dose (January
166 to February 2021) and ended on 13 June 2021, reflecting a mixed effect of one and two doses of
167 vaccines.

168 Finally, our data for the first time demonstrated that the observed differences did not attenuate
169 over time, verifying the hypothesis from a few recent preprint studies.^{16,17}

170 *Strengths and limitations*

171 The leading challenges in estimating vaccine effectiveness with observational data lies in
172 confounding by indication and potentially differential testing rates between exposed vaccinated and
173 unvaccinated populations.^{18,19} However, our study minimized the impact of such differences by
174 comparing two vaccines and restricting the analysis to a period when both vaccines were available
175 and had a similar national delivery. UK data are ideal for comparative effectiveness research into
176 Covid-19 vaccines, as both BNT162b2 and ChAdOx1 were rolled out simultaneously for the target
177 population (adults ≥ 50 years) included in our analyses.^{20 21,22}

178 However, additional limitations remain. Information on a few participants' characteristics was
179 collected ten years ago and may have changed since then. However, given that all people at the
180 cohort recruitment were already middle-aged or older adults (40-69 years old), we expected any
181 changes in those features such as socio-economic status and education are likely to be minor or
182 unrelated to the choice of vaccine types. Admittedly, misclassification of covariates could bias the

183 genuine association towards the null and lead to underestimating the comparative vaccine
184 effectiveness. Our study has several unique strengths. First, the granularity of UK Biobank data and
185 comprehensive linkage to external data sources allowed us to measure and control for an extensive
186 array of confounders, including demographics, socio-economic deprivation, comorbidity, and
187 medication usage. Our negative control outcome analyses provided reassurance that no significant
188 residual confounding remained after adjusting the mentioned covariates using IPW methods.
189 Secondly, the proposed study outcomes (Covid-19 and related hospitalization) were identified
190 through linkage to official national databases of tests and hospital inpatient data, minimising the risk
191 of misclassification. Finally, the sample size of our cohort triplicated that of the largest phase III
192 trials, enabling us to detect differences in hospital admission rates, which seemed underpowered in
193 randomized trials.

194 *Conclusions*

195 Our findings support evidence from pivotal trials suggesting that BNT162b2 provides additional
196 protection against Covid-19 and hospitalisation than ChAdOx1 vaccination. For the first time, we
197 demonstrated that this comparative effectiveness endured over six months when the Delta variant
198 was predominant, and community transmission kept increasing in the UK. These findings highlight
199 the importance of continuous monitoring of the effectiveness of different vaccines against emerging
200 SARS-CoV-2 variants to inform future booster campaigns and vaccine combinations strategies.

201

202

203

204 **Methods**

205 ***Study population and design***

206 We used data from the UK Biobank (UKBB) cohort, a prospective study of approximately 500,000
207 individuals aged between 40 and 69 at baseline recruited in 2007-2010 from England (89%), Scotland
208 (7%) and Wales (4%). All participants provided comprehensive information on socio-demographic,
209 lifestyle, and health-related factors, which has been described in detail elsewhere.²³

210 In this study, we analysed participants from England, as vaccination data for Scotland and Wales
211 were not available. Although vaccination started in early December 2020 in the UK, we restricted our
212 analyses to periods when both vaccines were rolled out to maximise comparability in individual- and
213 population-level characteristics, including indication for vaccination, ongoing public health
214 restrictions and predominant virus variants. With this in mind, we enrolled one-dose and two-dose
215 Covid-19 vaccine cohorts covering from Jan 11, 2021 to Feb 28, 2021, and from March 22, 2021 to
216 May 9, 2021 respectively. Participants with primary care records generated using the TTP software,
217 which did not contain a specific vaccine type, were excluded.

218 ***Data sources***

219 *Data linkage*

220 Several external data sources have been linked to UK Biobank to enable Covid-19 research, including
221 primary care electronic health records, hospital admissions data from Hospital Episode Statistics
222 (HES), and Covid-19 tests from Public Health England (PHE).²⁴ Data coverage for each data source is
223 listed in the **Supplementary Methods**.

224 *Vaccination status*

225 Vaccination status was obtained from GP prescription records, including the date of receipt of each
226 dose and the vaccine brand. We used dm+d codes (Dictionary of medicines and devices used across
227 the UK's National Health Service) to identify BNT162b2 [39115611000001103] and ChAdOx1
228 [39114911000001105] Covid-19 vaccination.

229 *Study outcomes*

230 In the UK, people at any age with any of these three Covid-19 symptoms (a high temperature, a new
231 and continuous cough, or loss or change in the sense of smell or taste) are recommended to take a
232 free Polymerase-chain-reaction (PCR) test by ordering a self-swab home PCR test kit or booking an
233 appointment at a walk-in or drive-through test site. People could also access this service if they were
234 at high risk of infection, e.g., close contact with a case (see <https://www.gov.uk/get-coronavirus-test>
235 for details). All these tests were recorded by PHE and linked to UK Biobank, providing information on
236 test dates and results. In this study, we defined infection as having a positive PCR test for SARS-CoV-
237 2; and Covid-19 hospitalization (infection requiring hospital admission) based on the UKBB derived
238 algorithm described in the **Supplementary Methods**.

239 *Covariates*

240 We assessed multiple characteristics potentially associated with Covid-19 risk and/or vaccination,
241 therefore considered as confounders. Study covariates included socio-demographics (age, sex,
242 ethnicity), socio-economic status (index of multiple deprivations, education levels), physical
243 measurements (body mass index), healthcare resource use (prescribed medications and the number
244 of hospital admissions three years before the vaccination date), and comorbidities. The calendar

245 week of receipt of the Covid-19 vaccine was also included as it affected the probability of receiving
246 different vaccines and infection risk (through changes in community transmission level).

247 ***Statistical analyses***

248 The outcome risk assessment window for the one-dose cohort went from receiving the first dose to
249 the earliest of outcome occurrence, receiving the second dose, or 14 weeks after the vaccination.
250 For the two-dose cohort, follow-up was from receiving the second dose to outcome occurrence or
251 end of the study (18/10/2021).

252 We used the propensity score-based inverse probability of treatment weighting (IPW) to minimise
253 confounding.²⁵ The specification of propensity score modelling was described in **Supplementary**
254 **Methods**. We generated Kaplan-Meier plots to depict the cumulative incidence of outcome over
255 time in each cohort. We applied Cox proportional hazards regression with robust variance
256 estimators to derive average hazard ratio (HR) and calculated incidence rates using weighted counts
257 and follow-up time. We assessed the proportionality of hazards in the Cox models by visually
258 inspecting scaled Schoenfeld residuals.

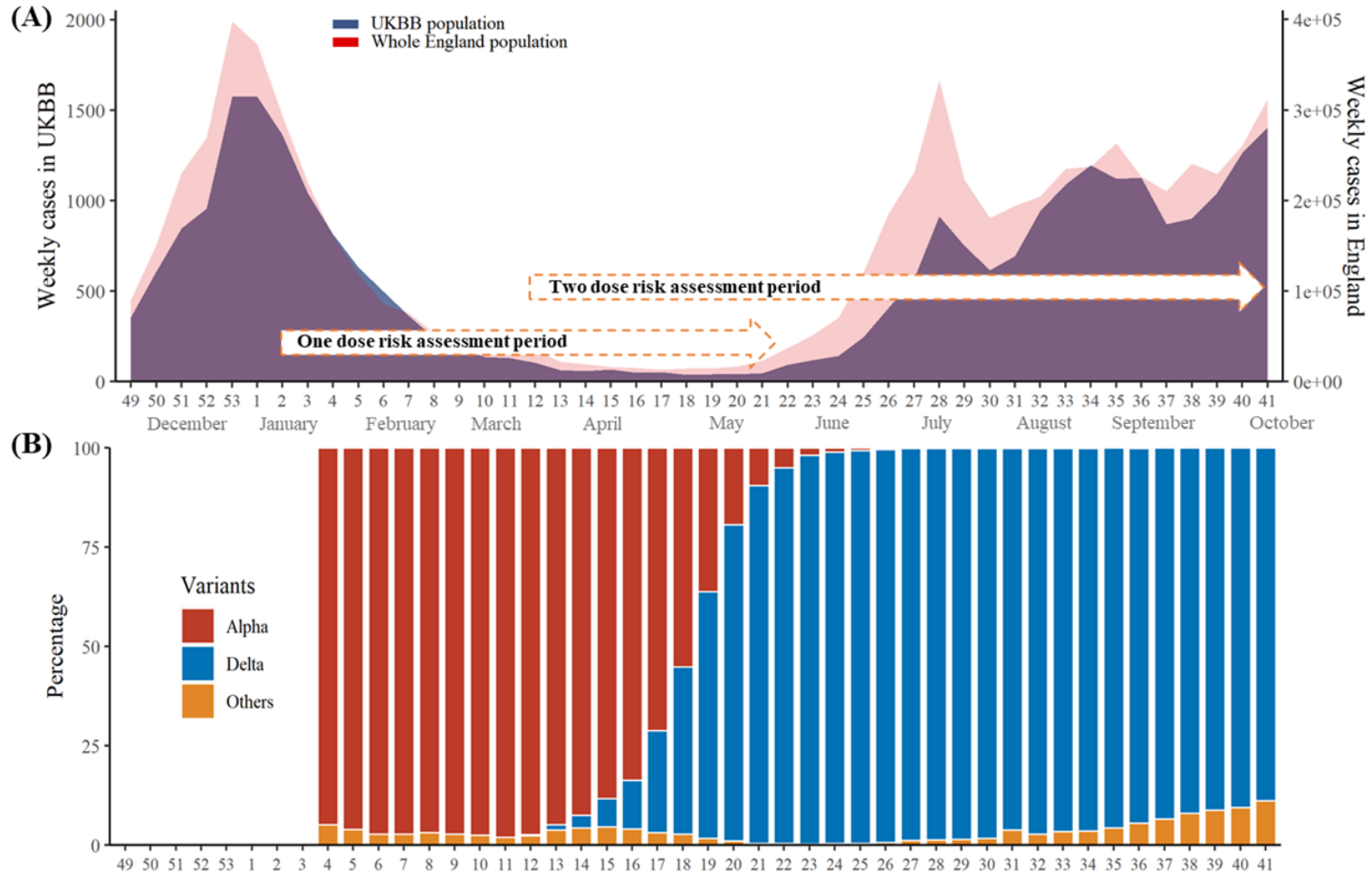
259 To evaluate for potential heterogeneity of the comparative effectiveness among specific
260 demographic subgroups and overtime after the second dose, we performed several secondary
261 analyses by including multiplicative interaction terms between the vaccine types and the following
262 categories separately: age (50-75 years or > 75 years), sex (male or female), ethnicity (white or other
263 ethnic groups), BMI (< 25 vs \geq 25), and four weeks' consecutive time intervals.

264 We conducted the negative control experiment to assess potential residual (unobserved)
265 confounding. Three clinical outcomes (limb pain, fracture, and peptic ulcer events) were pre-
266 specified and should not be associated with vaccination status (BNT162b2 vs ChAdOx1) if potential
267 confounders have been adequately controlled for.

268 Finally, we performed a sensitivity analysis using propensity score 1:1 matching without
269 replacement. Specifically, we set a caliper of width equal to 0.2 of the standard deviation of the logit
270 of the propensity score.²⁶ We used R version 3.5.1 for all analyses.

271 **Supplementary items**

272 **Supplementary Figure 1: The transmission dynamics of SARS-CoV-2 (A) and its dominant variants (B) during the study period.**



273 Notes: The data for weekly Covid-19 cases and SARS-CoV-2 variants of concern in England were from the Public Health England
274 (<https://coronavirus.data.gov.uk/>).

Supplementary Table 2: Baseline characteristics of the one dose cohorts.

	Before weighting		After weighting	
	BNT162b2	ChAdOx1	BNT162b2	ChAdOx1
Number	70097	98551	167938	167917
Previous infection (%)	1843 (2.6)	2649 (2.7)	4635.7 (2.8)	4662.1 (2.8)
Vaccination calendar week (%)				
Week2	12224 (17.4)	3127 (3.2)	15716.6 (9.4)	14681.5 (8.7)
Week3	15591 (22.2)	15728 (16.0)	31194.2 (18.6)	31220.5 (18.6)
Week4	14783 (21.1)	16990 (17.2)	32056.9 (19.1)	32096.3 (19.1)
Week5	7655 (10.9)	24264 (24.6)	31629.9 (18.8)	31957.0 (19.0)
Week6	7573 (10.8)	19492 (19.8)	26858.2 (16.0)	27070.1 (16.1)
Week7	5907 (8.4)	11282 (11.4)	16731.3 (10.0)	17059.5 (10.2)
Week8	6364 (9.1)	7668 (7.8)	13751.8 (8.2)	13832.5 (8.2)
Demographics				
Age, mean (sd)	71.35 (7.21)	71.06 (6.02)	71.09 (6.68)	71.11 (6.48)
Sex, male (%)	31203 (44.5)	43432 (44.1)	74111.1 (44.1)	74156.6 (44.2)
BMI, mean (sd)	27.56 (4.78)	27.46 (4.76)	27.51 (4.77)	27.51 (4.78)
Ethnicity (%)				
Asian or Asian British	1479 (2.1)	1563 (1.6)	3112.1 (1.9)	3085.9 (1.8)
Black or Black British	1136 (1.6)	1138 (1.2)	2311.8 (1.4)	2220.0 (1.3)
Chinese	224 (0.3)	263 (0.3)	478.5 (0.3)	481.6 (0.3)
Do not know	30 (0.0)	41 (0.0)	71.5 (0.0)	75.7 (0.0)
Mixed	397 (0.6)	460 (0.5)	851.1 (0.5)	840.7 (0.5)
Other ethnic group	657 (0.9)	703 (0.7)	1374.9 (0.8)	1363.6 (0.8)
Prefer not to answer	2248 (3.2)	3102 (3.1)	5267.6 (3.1)	5257.8 (3.1)
White	63926 (91.2)	91281 (92.6)	154471.3 (92.0)	154592.2 (92.1)
Education (%)				
None of the above	12247 (17.5)	16502 (16.7)	28750.7 (17.1)	28763.7 (17.1)
Prefer not to answer	2101 (3.0)	2323 (2.4)	4455.3 (2.7)	4320.0 (2.6)
College or university degree	21484 (30.6)	31157 (31.6)	52075.8 (31.0)	52190.1 (31.1)
A levels as levels or equivalent	7498 (10.7)	11054 (11.2)	18481.5 (11.0)	18474.9 (11.0)
O levels gcs es or equivalent	14812 (21.1)	20890 (21.2)	35573.0 (21.2)	35668.3 (21.2)

Cs es or equivalent	3473 (5.0)	4776 (4.8)	8245.5 (4.9)	8268.9 (4.9)
Nvq or hnd or hnc or equivalent	4605 (6.6)	6501 (6.6)	11099.1 (6.6)	11120.0 (6.6)
Other professional qualifications	3877 (5.5)	5348 (5.4)	9257.9 (5.5)	9111.5 (5.4)
Indices of Multiple Deprivation, mean (sd)				
Townsend deprivation index	17.70 (13.96)	16.49 (13.37)	17.08 (13.57)	17.01 (13.73)
Income score	0.12 (0.10)	0.11 (0.09)	0.11 (0.09)	0.11 (0.10)
Employment score	0.09 (0.06)	0.08 (0.06)	0.09 (0.06)	0.09 (0.06)
Health score	-0.11 (0.89)	-0.18 (0.88)	-0.13 (0.89)	-0.14 (0.89)
Education score	14.61 (14.90)	14.13 (14.83)	14.40 (14.74)	14.39 (15.02)
Housing score	19.94 (9.95)	19.80 (9.98)	19.70 (9.84)	19.69 (9.97)
Crime score	-0.04 (0.78)	-0.09 (0.77)	-0.07 (0.77)	-0.07 (0.77)
Medications (past three years)				
Lipid lowering drugs	33093 (47.2)	43266 (43.9)	76151.4 (45.3)	75957.6 (45.2)
RAS inhibitors	21956 (31.3)	29023 (29.4)	50602.1 (30.1)	50609.0 (30.1)
Other anti-hypertensives	11158 (15.9)	14517 (14.7)	25459.6 (15.2)	25458.1 (15.2)
Proton pump inhibitors	30579 (43.6)	41572 (42.2)	72068.6 (42.9)	71994.1 (42.9)
Diabetes medicines	6666 (9.5)	8288 (8.4)	14982.9 (8.9)	14899.5 (8.9)
Antidepressants	14515 (20.7)	20199 (20.5)	34836.6 (20.7)	34987.6 (20.8)
Systemic glucocorticoids	9282 (13.2)	12919 (13.1)	22129.9 (13.2)	22245.6 (13.2)
Antithrombotic	11799 (16.8)	15061 (15.3)	26856.6 (16.0)	26832.6 (16.0)
Anticoagulants	3110 (4.4)	4020 (4.1)	7099.6 (4.2)	7130.8 (4.2)
Immunosuppressants excl corticosteroids	1447 (2.1)	2017 (2.0)	3448.5 (2.1)	3492.0 (2.1)
Antineoplastic agents	180 (0.3)	251 (0.3)	413.7 (0.2)	413.4 (0.2)
Hospital admission frequency (past three years)	1.38 (5.52)	1.34 (5.25)	1.37 (6.36)	1.37 (5.12)
Charlson comorbidity components (past years)				
Diabetes (uncomplicated)	9193 (13.1)	11657 (11.8)	20797.9 (12.4)	20800.9 (12.4)
COPD	14156 (20.2)	19433 (19.7)	33547.1 (20.0)	33504.9 (20.0)
Chronic kidney disease	7449 (10.6)	9368 (9.5)	16714.7 (10.0)	16713.1 (10.0)
Congestive heart failure	1473 (2.1)	1893 (1.9)	3344.1 (2.0)	3370.8 (2.0)
Cancer	10807 (15.4)	14483 (14.7)	25028.3 (14.9)	24975.7 (14.9)
Dementia	681 (1.0)	959 (1.0)	1731.3 (1.0)	1827.9 (1.1)
Cerebrovascular disease	2799 (4.0)	3498 (3.5)	6356.5 (3.8)	6324.4 (3.8)
Diabetes (end-organ damage)	3821 (5.5)	4755 (4.8)	8556.7 (5.1)	8526.5 (5.1)

Peripheral vascular disease	1459 (2.1)	1857 (1.9)	3276.3 (2.0)	3287.2 (2.0)
Liver disease (moderate to severe)	279 (0.4)	384 (0.4)	631.3 (0.4)	646.1 (0.4)
Peptic ulcer	2151 (3.1)	2877 (2.9)	5081.0 (3.0)	5018.4 (3.0)
Rheumatoid arthritis	3118 (4.4)	4177 (4.2)	7266.1 (4.3)	7265.0 (4.3)
Myocardial infarction	2573 (3.7)	3254 (3.3)	5890.7 (3.5)	5866.9 (3.5)
AIDS	137 (0.2)	183 (0.2)	320.8 (0.2)	310.5 (0.2)
Malignant cancer	370 (0.5)	502 (0.5)	859.2 (0.5)	836.4 (0.5)
Liver disease (mild)	452 (0.6)	650 (0.7)	1105.4 (0.7)	1110.2 (0.7)
Hemiplegia	98 (0.1)	147 (0.1)	263.2 (0.2)	250.8 (0.1)

276

277

278

Supplementary Table 3: Baseline characteristics of the two dose cohorts.

	Before weighting		After weighting	
	BNT162b2	ChAdOx1	BNT162b2	ChAdOx1
Number	67813	89030	156301	156952
Previous infection (%)	2539 (2.9)	1818 (2.7)	4518.5 (2.9)	4498.7 (2.9)
Vaccination calendar week (%)				
Week12	8299 (12.2)	3972 (4.5)	12366.1 (7.9)	12606.7 (8.0)
Week13	13558 (20.0)	4373 (4.9)	18073.8 (11.6)	17812.4 (11.3)
Week14	12976 (19.1)	13900 (15.6)	26803.0 (17.1)	26791.8 (17.1)
Week15	13365 (19.7)	16445 (18.5)	29957.9 (19.2)	29935.1 (19.1)
Week16	6892 (10.2)	21591 (24.3)	28278.7 (18.1)	28468.5 (18.1)
Week17	7037 (10.4)	16945 (19.0)	23698.1 (15.2)	23941.3 (15.3)
Week18	5686 (8.4)	11804 (13.3)	17123.5 (11.0)	17396.8 (11.1)
Demographics				
Age, mean (sd)	72.47 (6.97)	71.51 (5.98)	71.80 (6.74)	71.81 (6.18)
Sex, male (%)	29825 (44.0)	39250 (44.1)	68880.5 (44.1)	69199.6 (44.1)
BMI, mean (sd)	27.47 (4.67)	27.46 (4.74)	27.50 (4.72)	27.50 (4.75)
Ethnicity (%)				
Asian or Asian British	1279 (1.9)	1348 (1.5)	2656.8 (1.7)	2641.7 (1.7)
Black or Black British	924 (1.4)	969 (1.1)	1957.9 (1.3)	1921.4 (1.2)
Chinese	185 (0.3)	225 (0.3)	405.8 (0.3)	409.4 (0.3)
Do not know	26 (0.0)	37 (0.0)	68.3 (0.0)	66.4 (0.0)
Mixed	345 (0.5)	408 (0.5)	730.0 (0.5)	735.3 (0.5)
Other ethnic group	560 (0.8)	613 (0.7)	1182.2 (0.8)	1171.0 (0.7)
Prefer not to answer	2143 (3.2)	2737 (3.1)	4807.1 (3.1)	4881.0 (3.1)
White	62351 (91.9)	82693 (92.9)	144492.9 (92.4)	145126.1 (92.5)
Education (%)				
None of the above	12648 (18.7)	15435 (17.3)	28036.2 (17.9)	28234.6 (18.0)
Prefer not to answer	2031 (3.0)	2116 (2.4)	4097.4 (2.6)	4059.5 (2.6)
College or university degree	20513 (30.2)	27567 (31.0)	47638.2 (30.5)	47836.8 (30.5)
A levels as levels or equivalent	7069 (10.4)	9848 (11.1)	16888.3 (10.8)	16951.9 (10.8)
O levels gcs es or equivalent	14183 (20.9)	19030 (21.4)	33181.6 (21.2)	33314.8 (21.2)

Cs es or equivalent	2970 (4.4)	4142 (4.7)	7166.0 (4.6)	7180.5 (4.6)
Nvq or hnd or hnc or equivalent	4440 (6.5)	5916 (6.6)	10415.2 (6.7)	10483.2 (6.7)
Other professional qualifications	3959 (5.8)	4976 (5.6)	8878.2 (5.7)	8891.1 (5.7)
Indices of Multiple Deprivation, mean (sd)				
Townsend deprivation index	17.35 (13.69)	16.39 (13.27)	17.00 (13.51)	16.97 (13.62)
Income score	0.11 (0.09)	0.11 (0.09)	0.11 (0.09)	0.11 (0.09)
Employment score	0.09 (0.06)	0.08 (0.06)	0.09 (0.06)	0.09 (0.06)
Health score	-0.12 (0.89)	-0.18 (0.88)	-0.14 (0.88)	-0.14 (0.88)
Education score	14.39 (14.77)	14.10 (14.80)	14.35 (14.72)	14.35 (14.96)
Housing score	19.85 (9.90)	19.66 (9.92)	19.64 (9.80)	19.66 (9.97)
Crime score	-0.05 (0.78)	-0.09 (0.77)	-0.07 (0.77)	-0.07 (0.77)
Medications (past three years)				
Lipid lowering drugs	33138 (48.9)	40248 (45.2)	73220.9 (46.8)	73457.8 (46.8)
RAS inhibitors	21768 (32.1)	26794 (30.1)	48369.8 (30.9)	48521.5 (30.9)
Other anti-hypertensives	11297 (16.7)	13489 (15.2)	24636.9 (15.8)	24732.6 (15.8)
Proton pump inhibitors	30074 (44.3)	38128 (42.8)	68201.9 (43.6)	68396.9 (43.6)
Diabetes medicines	6168 (9.1)	7556 (8.5)	13866.2 (8.9)	13854.3 (8.8)
Antidepressants	13877 (20.5)	18277 (20.5)	32391.9 (20.7)	32511.1 (20.7)
Systemic glucocorticoids	9126 (13.5)	11585 (13.0)	20797.3 (13.3)	20784.2 (13.2)
Antithrombotic	11903 (17.6)	14077 (15.8)	26024.1 (16.6)	26049.1 (16.6)
Anticoagulants	3392 (5.0)	3969 (4.5)	7289.0 (4.7)	7271.8 (4.6)
Immunosuppressants excl corticosteroids	1357 (2.0)	1823 (2.0)	3216.2 (2.1)	3222.4 (2.1)
Antineoplastic agents	185 (0.3)	232 (0.3)	411.4 (0.3)	398.8 (0.3)
Hospital admission frequency (past three years)	1.39 (5.82)	1.32 (5.02)	1.37 (6.36)	1.36 (4.89)
Charlson comorbidity components (past years)				
Diabetes (uncomplicated)	8663 (12.8)	10667 (12.0)	19443.3 (12.4)	19495.5 (12.4)
COPD	13737 (20.3)	17715 (19.9)	31566.4 (20.2)	31582.3 (20.1)
Chronic kidney disease	7746 (11.4)	8924 (10.0)	16513.0 (10.6)	16558.8 (10.6)
Congestive heart failure	1548 (2.3)	1814 (2.0)	3355.0 (2.1)	3359.2 (2.1)
Cancer	10937 (16.1)	13601 (15.3)	24305.2 (15.6)	24366.2 (15.5)
Dementia	820 (1.2)	1004 (1.1)	1871.1 (1.2)	1942.2 (1.2)
Cerebrovascular disease	2860 (4.2)	3327 (3.7)	6199.3 (4.0)	6173.1 (3.9)
Diabetes (end-organ damage)	3638 (5.4)	4411 (5.0)	8099.5 (5.2)	8084.2 (5.2)

Peripheral vascular disease	1513 (2.2)	1760 (2.0)	3258.4 (2.1)	3256.7 (2.1)
Liver disease (moderate to severe)	258 (0.4)	348 (0.4)	605.6 (0.4)	606.2 (0.4)
Peptic ulcer	2190 (3.2)	2684 (3.0)	4912.0 (3.1)	4898.0 (3.1)
Rheumatoid arthritis	3225 (4.8)	3939 (4.4)	7172.6 (4.6)	7153.7 (4.6)
Myocardial infarction	2541 (3.7)	3053 (3.4)	5663.6 (3.6)	5663.5 (3.6)
AIDS	131 (0.2)	164 (0.2)	294.3 (0.2)	288.0 (0.2)
Malignant cancer	352 (0.5)	462 (0.5)	789.2 (0.5)	804.3 (0.5)
Liver disease (mild)	421 (0.6)	579 (0.7)	1005.7 (0.6)	1022.9 (0.7)
Hemiplegia	90 (0.1)	123 (0.1)	225.5 (0.1)	222.0 (0.1)

280

281

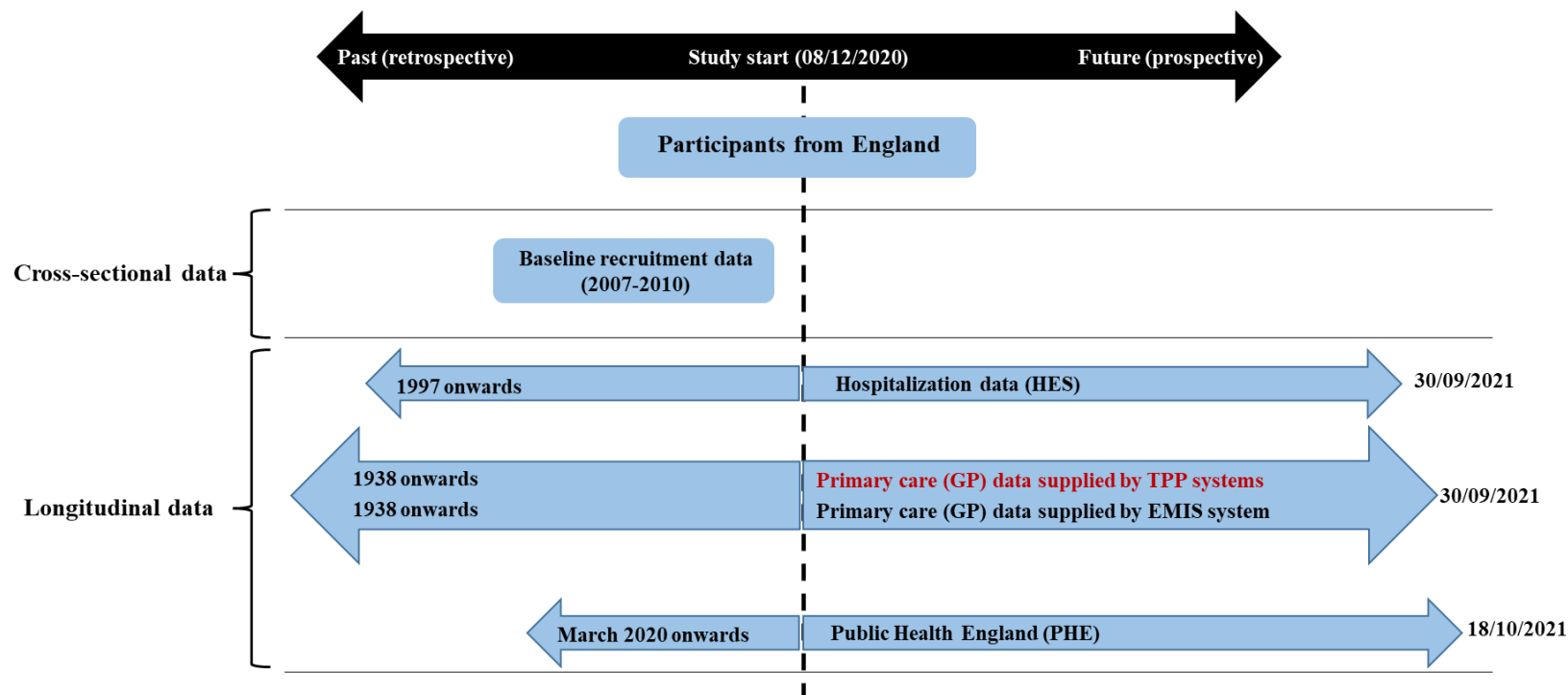
282 **Supplementary Table 4: Sensitivity analysis (propensity score matching)**

	BNT162b2 vs ChAdOx1			
	Number	Events	Incidence	HRs
After first-dose				
Covid-19 infection	58676/ 58676	154/ 193	12.6/ 15.7	0.80 (0.65 - 0.99)
Covid-19 hospitalization	58676/ 58676	29/ 32	2.36/ 2.60	0.91 (0.55 - 1.51)
After second-dose				
Covid-19 infection	54422/ 54422	1089/ 1582	39.5/ 57.6	0.69 (0.63 - 0.74)
Covid-19 hospitalization	54422/ 54422	93/ 142	3.35/ 5.13	0.65 (0.50 - 0.85)

283

284

285 **Supplementary Methods**
 286 **Sources and timelines for data availability**



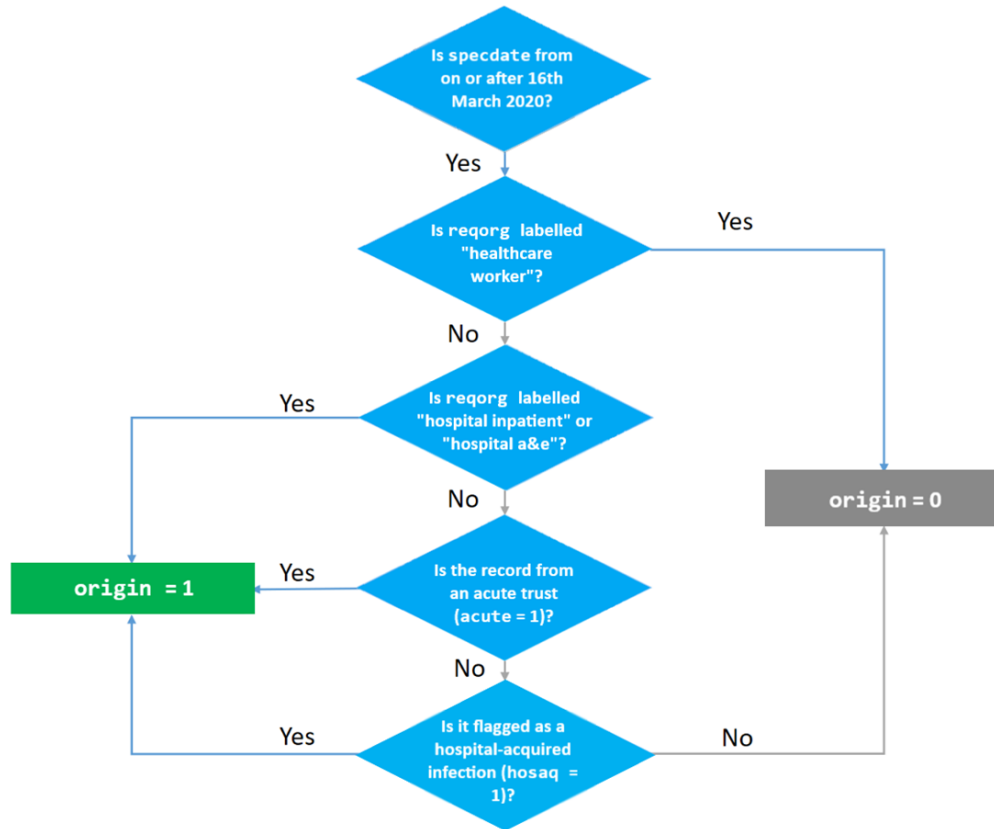
287

288 The baseline recruitment data includes detailed demographic, socioeconomic, lifestyle factors, and physical activities information. The HES data includes
 289 hospital administration, operations and diagnoses information. The GP data includes diagnoses and prescription information. Of note, the Covid-19
 290 vaccination has been integrated into EMIS GP's prescription records but not into the TPP. The PHE data includes Covid-19 test results.

291

292 **Construction of the inpatient indicator for UKBB participants**

293 The construction of the "origin" field is based on information provided on the specimen request form. If the specimen was marked as being from an acute
 294 (emergency) care provider, an A&E department, an inpatient location, or resulted from health care associated infection, it is recorded by PHE as an
 295 inpatient sample. Tests marked as being from "Healthcare Worker Testing" are never recorded as inpatient samples, though some may also carry an acute
 flag.



The aim of designating inpatient status for the SARS-CoV-2 test was to indicate severity of Covid-19 infection. SARS-CoV-2 tests taken in hospital can be undertaken for several reasons including symptomatic patients requiring hospital admission, or general inpatient screening, which includes asymptomatic patients. Furthermore, the algorithm used to flag inpatient status may not necessarily indicate inpatient care in all cases. For example, some tests flagged as coming from "acute" trusts will likely not be inpatients, since these trusts may also perform tests on behalf of GPs and others, and tests requested by A&E may be for patients who are not then admitted.

The flow chart below illustrates the logic used by PHE to generate an indicator of whether a test result was obtained from a hospital inpatient or not (depicted as the "origin" field in the covid19_result table). The fields used to construct the "origin" field have also been released to enable researchers to replicate it and construct their own alternatives if desired.

PHE's designation of inpatient status can be compared to hospital episodes statistics (HES) dates of admission and discharge made by NHS trusts. A comparison between SARS-CoV-2 positive inpatient status versus inpatient diagnosis codes (ICD-10 diagnosis codes U071 or U072) for Covid-19 (from HES) can also be made. For

319 further details, see the following webpage: <https://news.bugbank.uk/2020/08/identifying-inpatients-comparison-to.html>.

320

321 **Propensity score modelling and inverse probability of treatment weighting**

322 We calculated propensity scores for a vaccination with BNT162b2 against ChAdOx1 using logistic regression. The variables included in the model were
323 previous Covid-19 infection status (binary), age on the vaccination date (continuous linear), sex (binary), ethnicity (categorical, collected at the UK Biobank
324 recruitment), multiple socio-economic deprivation scores (Townsend deprivation index, income score, employment score, health score, education score,
325 housing score, and crime score; continuous linear, collected at the UK Biobank recruitment), education levels (categorical, collected at the UK Biobank
326 recruitment), body mass index (continuous linear, collected at the UK Biobank recruitment), a list of pre-specified medications (binary, obtained from
327 primary care prescription records), the number of hospital admissions (continuous linear, obtained from HES), and comorbidities (binary, obtained from
328 primary care diagnosis records). The weights for each participant were then computed based on the Rosenbaum formula: $W_i = \frac{Z_i}{e_i} + \frac{(1-Z_i)}{(1-e_i)}$.²⁷ To reduce
329 unstable estimate due to extreme weights in the tails of the propensity score distribution, we used asymmetric trimming to exclude people whose
330 propensity score was below the 1th percentile of the propensity score of the BNT162b2 cohort and above the 99th percentile of the propensity score of the
331 ChAdOx1 cohort.²⁸

332

333

334 **Acknowledgements and funding**

335 DPA is funded through an NIHR Senior Research Fellowship (Grant number SRF-2018-11-ST2-004).
336 The views expressed in this publication are those of the author(s) and not necessarily those of the
337 NHS, the National Institute for Health Research or the Department of Health. Mr Junqing Xie has
338 been awarded a Jardine-Oxford Graduate Scholarship and a titular Clarendon Fund Scholarship
339 outside the submitted work. AP-U is supported by the Medical Research Council (grant numbers
340 MR/K501256/1, MR/N013468/1).

341

342 **Conflict of Interests Statement**

343 Dr Prieto-Alhambra reported receiving grant support from Les Laboratoires Servier; that his research
344 group has received grants and advisory or speaker fees from Amgen, Astellas, AstraZeneca, Chesi-
345 Taylor, Johnson and Johnson and UCD; and that Janssen, on behalf of Innovative Medicines
346 Initiative-funded European Health Data Evidence Network and European Medical Information
347 Framework consortium and Synapse Management Partners, has supported training programs, open
348 to external participants, organized by his department. Others have nothing to disclose.

349

350

351

352 References

- 353 **1** Polack FP, Thomas SJ, Kitchin N, et al. Safety and Efficacy of the BNT162b2 mRNA Covid-19
354 Vaccine. *N Engl J Med.* 2020;383(27):2603-2615. doi:10.1056/NEJMoa2034577.
- 355 **2** Baden LR, El Sahly HM, Essink B, et al. Efficacy and Safety of the mRNA-1273 SARS-CoV-2
356 Vaccine. *N Engl J Med.* 2020;384(5):403-416. doi:10.1056/NEJMoa2035389.
- 357 **3** Voysey M, Clemens SAC, Madhi SA, et al. Safety and efficacy of the ChAdOx1 nCoV-19 vaccine
358 (AZD1222) against SARS-CoV-2: an interim analysis of four randomised controlled trials in Brazil,
359 South Africa, and the UK. *The Lancet.* 2020;397(10269):99-111. doi:10.1016/S0140-
360 6736(20)32661-1.
- 361 **4** Sadoff J, Gray G, van VandeBosch, et al. Safety and Efficacy of Single-Dose Ad26.COV2.S Vaccine
362 against Covid-19. *N Engl J Med.* 2021;384(23):2187-2201. doi:10.1056/NEJMoa2101544.
- 363 **5** Dagan N, Barda N, Kepten E, et al. BNT162b2 mRNA Covid-19 Vaccine in a Nationwide Mass
364 Vaccination Setting. *N Engl J Med.* 2021;384(15):1412-1423. doi:10.1056/NEJMoa2101765.
- 365 **6** Vasileiou E, Simpson CR, Shi T, et al. Interim findings from first-dose mass COVID-19 vaccination
366 roll-out and COVID-19 hospital admissions in Scotland: a national prospective cohort study. *The*
367 *Lancet.* 2021;397(10285):1646-1657. doi:10.1016/S0140-6736(21)00677-2.
- 368 **7** Pijls BG, Jolani S, Atherley A, et al. Demographic risk factors for COVID-19 infection, severity,
369 ICU admission and death: a meta-analysis of 59 studies. *BMJ Open.* 2021;11(1):e044640.
370 doi:10.1136/bmjopen-2020-044640.
- 371 **8** Peckham H, Gruijter NM de, Raine C, et al. Male sex identified by global COVID-19 meta-
372 analysis as a risk factor for death and ICU admission. *Nat Commun.* 2020;11(1):6317.
373 doi:10.1038/s41467-020-19741-6.
- 374 **9** Mathur R, Rentsch CT, Morton CE, et al. Ethnic differences in SARS-CoV-2 infection and COVID-
375 19-related hospitalisation, intensive care unit admission, and death in 17 million adults in
376 England: an observational cohort study using the OpenSAFELY platform. *The Lancet.*
377 2021;397(10286):1711-1724. doi:10.1016/S0140-6736(21)00634-6.
- 378 **10** Recalde M, Pistillo A, Fernandez-Bertolin S, et al. Body Mass Index and Risk of COVID-19
379 Diagnosis, Hospitalization, and Death: A Cohort Study of 2 524 926 Catalans. *J Clin Endocrinol*
380 *Metab.* 2021;106(12):e5030-e5042. doi:10.1210/clinem/dgab546.
- 381 **11** Liu X, Shaw RH, Stuart ASV, et al. Safety and immunogenicity of heterologous versus
382 homologous prime-boost schedules with an adenoviral vectored and mRNA COVID-19 vaccine
383 (Com-COV): a single-blind, randomised, non-inferiority trial. *The Lancet.* 2021;398(10303):856-
384 869. doi:10.1016/S0140-6736(21)01694-9.
- 385 **12** Duarte-Salles T, Prieto-Alhambra D. Heterologous vaccine regimens against COVID-19. *The*
386 *Lancet.* 2021;398(10295):94-95. doi:10.1016/S0140-6736(21)01442-2.
- 387 **13** Borobia AM, Carcas AJ, Pérez-Olmeda M, et al. Immunogenicity and reactogenicity of
388 BNT162b2 booster in ChAdOx1-S-primed participants (CombiVacS): a multicentre, open-label,
389 randomised, controlled, phase 2 trial. *The Lancet.* 2021;398(10295):121-130.
390 doi:10.1016/S0140-6736(21)01420-3.
- 391 **14** Hulme WJ, Williamson EJ, Green A, et al. Comparative effectiveness of ChAdOx1 versus
392 BNT162b2 COVID-19 vaccines in Health and Social Care workers in England: a cohort study
393 using OpenSAFELY. *medRxiv.* 2021:2021.10.13.21264937. doi:10.1101/2021.10.13.21264937.
- 394 **15** Fry A, Littlejohns TJ, Sudlow C, et al. Comparison of Sociodemographic and Health-Related
395 Characteristics of UK Biobank Participants With Those of the General Population. *American*
396 *Journal of Epidemiology.* 2017;186(9):1026-1034. doi:10.1093/aje/kwx246.
- 397 **16** Cromer D, Steain M, Reynaldi A, et al. SARS-CoV-2 variants: levels of neutralisation required for
398 protective immunity; 2021.

- 399 **17** Bernal JL, Andrews N, Gower C, et al. *Effectiveness of COVID-19 vaccines against the B.1.617.2*
400 *variant; 2021.*
- 401 **18** Lewnard JA, Patel MM, Jewell NP, et al. Theoretical Framework for Retrospective Studies of the
402 Effectiveness of SARS-CoV-2 Vaccines. *Epidemiology (Cambridge, Mass.)*. 2021;32(4):508-517.
403 doi:10.1097/EDE.0000000000001366.
- 404 **19** King C, Beard J, Crampin AC, et al. Methodological challenges in measuring vaccine
405 effectiveness using population cohorts in low resource settings. *Vaccine*. 2015;33(38):4748-
406 4755. doi:10.1016/j.vaccine.2015.07.062.
- 407 **20** UK COVID-19 vaccines delivery plan.
408 https://assets.publishing.service.gov.uk/government/uploads/system/uploads/attachment_data/file/951928/uk-covid-19-vaccines-delivery-plan-final.pdf. Accessed September 27, 2021.
- 409 **21** Regulatory approval of Pfizer/BioNTech vaccine for COVID-19. *GOV.UK*. Updated December 2,
410 2020. [https://www.gov.uk/government/publications/regulatory-approval-of-pfizer-biontech-](https://www.gov.uk/government/publications/regulatory-approval-of-pfizer-biontech-vaccine-for-covid-19)
411 [vaccine-for-covid-19](https://www.gov.uk/government/publications/regulatory-approval-of-pfizer-biontech-vaccine-for-covid-19). Accessed September 27, 2021.
- 412 **22** Regulatory approval of Vaxzevria (previously COVID-19 Vaccine AstraZeneca). *GOV.UK*. Updated
413 December 30, 2020. [https://www.gov.uk/government/publications/regulatory-approval-of-](https://www.gov.uk/government/publications/regulatory-approval-of-covid-19-vaccine-astrazeneca)
414 [covid-19-vaccine-astrazeneca](https://www.gov.uk/government/publications/regulatory-approval-of-covid-19-vaccine-astrazeneca). Accessed September 27, 2021.
- 415 **23** Bycroft C, Freeman C, Petkova D, et al. The UK Biobank resource with deep phenotyping and
416 genomic data. *Nature*. 2018;562(7726):203-209. doi:10.1038/s41586-018-0579-z.
- 417 **24** Armstrong J, Rudkin JK, Allen N, et al. Dynamic linkage of COVID-19 test results between Public
418 Health England's Second Generation Surveillance System and UK Biobank. *Microbial Genomics*.
419 2020;6(7). doi:10.1099/mgen.0.000397.
- 420 **25** Austin PC. An Introduction to Propensity Score Methods for Reducing the Effects of
421 Confounding in Observational Studies. *Multivariate Behavioral Research*. 2011;46(3):399-424.
422 doi:10.1080/00273171.2011.568786.
- 423 **26** Wang Y, Cai H, Li C, et al. Optimal caliper width for propensity score matching of three
424 treatment groups: a Monte Carlo study. *PLOS ONE*. 2013;8(12):e81045.
425 doi:10.1371/journal.pone.0081045.
- 426 **27** Austin PC, Stuart EA. The performance of inverse probability of treatment weighting and full
427 matching on the propensity score in the presence of model misspecification when estimating
428 the effect of treatment on survival outcomes. *Stat Methods Med Res*. 2017;26(4):1654-1670.
429 doi:10.1177/0962280215584401.
- 430 **28** Stürmer T, Rothman KJ, Avorn J, Glynn RJ. Treatment effects in the presence of unmeasured
431 confounding: dealing with observations in the tails of the propensity score distribution--a
432 simulation study. *American Journal of Epidemiology*. 2010;172(7):843-854.
433 doi:10.1093/aje/kwq198.
- 434
435