

Supplemental information

Broad neutralization of SARS-CoV-2 variants, including omicron, following breakthrough infection with delta in COVID-19 vaccinated individuals

Thomas Lechmere¹#, Luke B. Snell²#, Carl Graham¹, Jeffrey Seow¹, Zayed A. Shalim¹, Themoula Charalampous,² Adela Alcolea-Medina,² Rahul Batra,² Gaia Nebbia,² Jonathan D. Edgeworth², Michael H. Malim¹, Katie J. Doores¹*

¹Department of Infectious Diseases, School of Immunology & Microbial Sciences, King's College London, London, UK.

²Centre for Clinical Infection and Diagnostics Research, Department of Infectious Diseases, Guy's and St Thomas' NHS Foundation Trust, London, UK.

These authors contributed equally

* To whom correspondence should be addressed: katie.doores@kcl.ac.uk

Figure S1: A) Comparison of the IgG and IgM ED₅₀ values against recombinant WT and delta Spikes for the AZD1222 and BNT162b2 vaccinated individuals experiencing breakthrough infection. Black horizontal lines show the geometric mean titres. **B)** Longitudinal IgG and IgM ED₅₀ against recombinant WT Spike in the BTI group. IgG is shown with a circle and IgM is shown with a triangle. Donors with IgM>IgG are shown in blue, donors who do not seroconvert are shown in red, donors with high Spike IgG but no N IgG at <7days POS are shown in orange, and donors with low Spike IgG at <7 days POS that rapidly increases are shown in yellow. **C)** Longitudinal IgG response to N protein. The dotted line represents the cut-off used to determine N seropositivity. **D)** Correlation between ED₅₀ against recombinant WT Spike in the BTI group and the optical density (OD) for N IgG binding. The horizontal dotted line represents the lowest dilution used in the neutralization assay. The vertical dotted line represents the cut-off used to determine N seropositivity. Data points are colour coded based on the days POS as indicated in the key. The red box highlights samples that have high IgG binding ED₅₀ but low IgG to N.

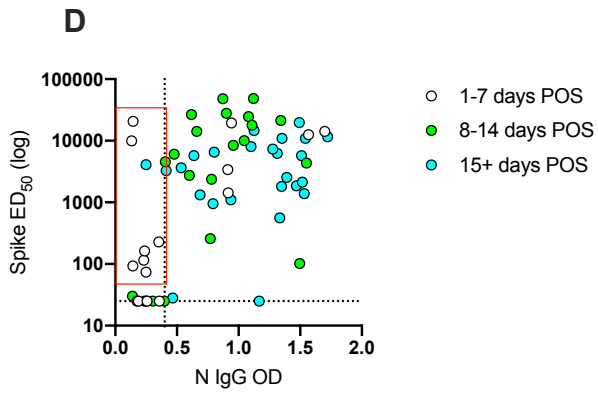
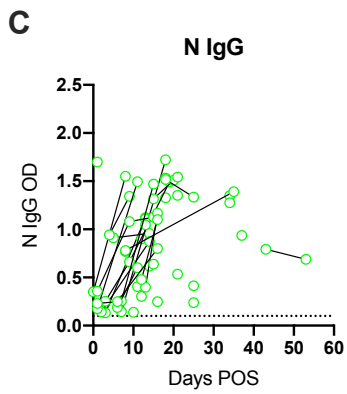
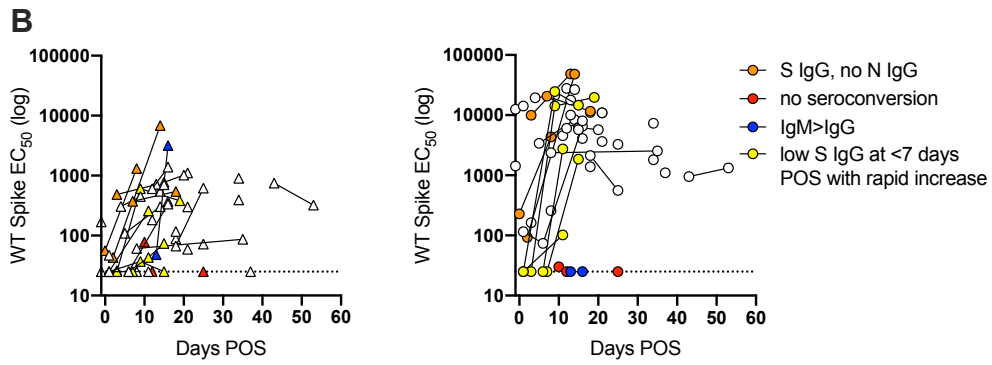
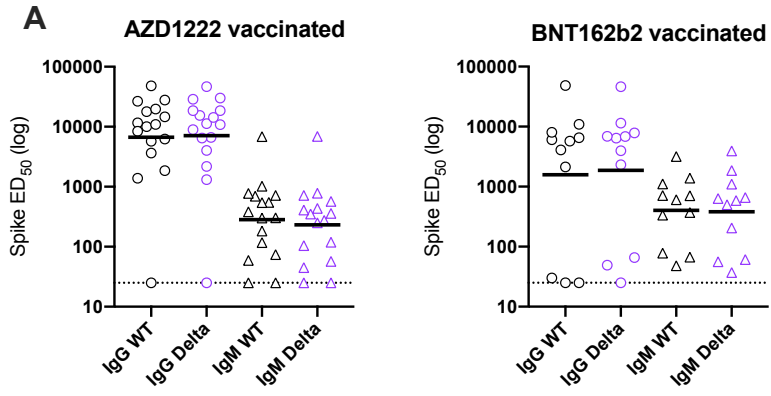


Figure S2: A) Neutralization potency of sera following breakthrough infection at different days post onset of symptoms (POS) against alpha, beta and mu pseudovirus particles. **B)** ID₅₀ of neutralization against WT (black), and VOCs alpha (blue), delta (purple), mu (red) and beta (orange) for sera from AZD1222 vaccinated or BNT162b2 individuals experiencing SARS-CoV-2 delta breakthrough infection. Black line shows the geometric mean titre.

