

## **A comprehensive systematic review and meta-analysis of the global data involving 61,532 cancer patients with SARS-CoV-2 infection.**

Emma Khoury <sup>1,2</sup>, Sarah Nevitt <sup>3</sup>, William Rohde Madsen <sup>4,5</sup>, Lance Turtle <sup>6</sup>, Gerry Davies <sup>7,8</sup>, Carlo Palmieri <sup>1,9</sup>

1. University of Liverpool, Institute of Translational Medicine, Department of Molecular and Clinical Cancer Medicine, UK
2. University of Liverpool, School of Medicine, Liverpool, UK
3. Department of Health Data Science, Institute of Population Health, University of Liverpool, UK
4. Department of Political Science & School of Public Policy, University College London.
5. University of Copenhagen, Department of Political Science
6. Tropical and Infectious Disease Unit, Liverpool University Hospitals NHS Foundation Trust, member of Liverpool Health Partners.
7. University of Liverpool Department of Clinical Infection Microbiology and Immunology, Department of Clinical Infection, Liverpool
8. University of Liverpool Institute of Infection and Global Health, Veterinary and Ecological Sciences, Liverpool
9. The Clatterbridge Cancer Centre NHS Foundation Trust, Liverpool, UK

### **Social media handles:**

E.K: @emmakhoury\_

S.N: @sjn\_16

L.T: @LanceTurtle

C.P: @cancermedic

**Running Title: A systematic review and meta-analysis of SARS-CoV-2/COVID-19 in patients with malignant disease.**

**Word count: 4,622 (Microsoft Word for Mac, Version 16.53)**

**Key words: SARS-CoV-2, COVID-19, Cancer, Systematic Review**

### **To whom correspondence should be addressed:**

Professor Carlo Palmieri  
University of Liverpool  
Institute of Translational Medicine  
Department of Molecular and Clinical Cancer Medicine  
Sherrington Building, Ashton Street,  
Liverpool, L69 3GE, UK  
Tel No: +44 20 151 794 9815  
Email: c.palmieri@liverpool.ac.uk

## Abstract

### Background

SARS-CoV-2 have been shown to be associated with more severe disease and death in cancer patient. A systematic review and meta-analysis was conducted to determine the risk by age, tumour type and treatment of infection with SARS-CoV-2 in cancer patients.

### Methods

Systematic review by searching PubMed, Web of Science, and Scopus for articles published in English up to June 14, 2021 of SARS-CoV-2 infection in >10 patients with malignant disease. Outcomes included factors in patients with malignant disease that may predict a poor outcome from COVID-19 compared to patients without malignant disease, including patient demographics, tumour subtype and cancer treatments. A meta-analysis was performed using random effects model.

### Results

81 studies were included, totalling 61,532 cancer patients. Haematological malignancies comprised 22.1% (9,672 of 43,676) of cases. Relative risk (RR) of mortality when age and sex matched was 1.69 (95% CI, 1.46-1.95;  $p<0.001$ ;  $I^2=51\%$ ). RR of mortality, versus non-cancer patients, was associated with decreasing age ( $\exp(b)0.96$ ; 95% CI, 0.922–0.994;  $p=0.028$ ) but not male sex ( $\exp(b)1.89$ ; 95% CI, 0.222–6.366;  $p=0.83$ ). RR of mortality in those with haematological malignancies versus non-cancer control was 1.81 (95% CI, 1.53-2.95;  $I^2=0.0\%$ ). Compared to other cancers, increased risk of death was seen for lung (RR 1.68, 95% CI, 1.45-1.94;  $p<0.001$ ), genitourinary (RR 1.11; 95% CI, 1.00-1.24;  $p=0.059$ ) and haematological malignancies (RR 1.42; 95% CI, 1.31-1.54;  $p<0.001$ ). Breast (RR 0.51; 95% CI, 0.36-0.71;  $p<0.001$ ) and gynaecological cancers (RR 0.76; 95% CI, 0.62-0.93;  $p=0.009$ ) had lower risk of death. Receipt of chemotherapy had greatest overall pooled mortality risk of 30% (95% CI, 25-36%;  $I^2=86.97\%$ ) and endocrine therapy the lowest at 11% (95% CI, 6-16%;  $I^2=70.7\%$ ).

### Conclusions

Cancer patients, particularly younger cancer patients, appear at increased risk of mortality from COVID-19 compared to non-cancer patients. Differences in outcomes were seen based on tumour types and treatment.

**Highlights (max 3-5, max 125 characters with spaces per highlight):**

- To our knowledge this is the largest review and meta-analysis of COVID-19 in cancer patients with insights into tumour types and therapies.
- In unadjusted analysis cancer doubles the risk of COVID-19 related mortality. This decreased when adjusted for age and sex.
- Younger cancer patients have the highest risk of mortality when compared to non-cancer COVID-19 patient of a similar age.
- Patients with lung, genitourinary and haematological malignancies are at increased risk of mortality, breast and gynaecological cancers are at lower risk.
- Patients on chemotherapy have the highest pooled mortality risk with those on endocrine therapy the lowest.

## Introduction:

Individuals with cancer are more prone to respiratory viruses as a result of immunosuppression from either the underlying disease or therapy. This has previously been demonstrated with influenza, which is associated with an increased mortality rate in patients with solid and haematological malignancies<sup>1,2</sup>. While rhinovirus alone, if present before hematopoietic cell transplant, is associated with substantial increase in mortality<sup>3</sup>. Given this, and since the emergence of the SARS coronavirus 2 (SARS-CoV-2) pandemic, there has been an intense and focused global effort to understand the impact on cancer patients of infection with SARS-CoV-2 and the outcomes with COVID-19.

Understanding the possible risks, consequences, and complications of SARS-CoV-2/COVID-19 in patients with cancer is important for patients, family, and health care systems. For patients and their families such information is key to enable informed decisions around the potential risks of anti-cancer treatment undertaken during the pandemic as well as the degree they should limit social and familial interactions. While for health-care systems, these data are vital to enable informed decisions regarding treatment risk, how to protect cancer patients as well as how best to prioritise a heterogenous population, based on cancer type and treatment, for preventive measures and anti-viral treatments. Such information is also vital in planning the response to future pandemics.

The first large population level data regarding outcome of patients with COVID-19 came from data from the United Kingdom's pandemic protocol, International Severe Acute Respiratory and Emerging Infections Consortium (ISARIC) WHO Clinical Characterisation Protocol UK (CCP-UK). This revealed that 10% of the 20,133 hospitalised patients with COVID-19, as of 3<sup>rd</sup> May 2020, had a history of malignancy. A significant increase in hospital mortality was reported in those patients with a history of malignancy (HR 1.13; 95% CI, 1.02-1.24; p=0.017)<sup>4</sup>. While population level data from the Intensive Care National Audit and Research Centre (ICNARC) has found a lower proportion of patients with cancer admitted to intensive care as compared to a retrospective cohort of patients with other viral pneumonias (non-COVID-19), 2.5% versus 5.8% respectively<sup>5</sup>. As well as immunosuppressed patients having increased likelihood of death if admitted to critical care<sup>6</sup>.

Numerous cancer-specific studies have been undertaken as part of the effort to understand COVID-19 in cancer patients. These have found cancer patients and to have a more severe disease course, with older cancer patients<sup>7-27</sup>, and those with haematological malignancies reported to be at particular increased risk<sup>7,8,11,23,28-33</sup>. However, many of these studies report disparate results, particularly regarding the association of cancer type and recent cancer treatment with outcomes<sup>10,15,23,34,35</sup>. These studies varied in size, nature and were limited by a lack of, or only a very small comparator non-cancer groups<sup>12,14,16,18,19,21,23,26,29,36-45</sup> as well as selectivity in which tumour types of cancer therapies were included in their analysis<sup>9,11,18,23,25,29,32,40,43,46-59</sup>. The lack of a contemporaneous age and sex matched non-cancer population, variability in data collection and reporting as well as variable follow up times also limits the published cohort studies. In those studies where a non-cancer cohort was utilised, these were historical patients or based on registry data<sup>36</sup>. Given all these factors, confounding biases may be present as a result of unmeasured confounders.

In the current study we undertook a systematic and unbiased review and meta-analysis of all the available published data to investigate the outcomes of patients with SARS-CoV-2 as well as identifying factors which may predict for a poor outcome. Such research and information is key to further our understanding of the impact of the SARS-CoV-2 pandemic as well as identifying possible novel risk factors in cancer patients not identified in previous cohort studies.

## **Methods**

### **Search strategy and literature search**

We undertook a systematic review of the published literature and reported our findings according to the Preferred Reporting Items for Systematic Reviews and Meta-analyses (PRISMA) guidelines<sup>60</sup>. Repeated searches of PubMed, Web of Science and Scopus databases were performed up to 14<sup>th</sup> June 2021. References from all identified articles were also reviewed to check for other relevant studies with duplicates identified and removed. Search strategies and results from the literature search are shown in Tables S1-S3.

### **Study selection**

Two authors (E.K. and C.P.) independently screened all titles and abstracts after initial de-duplication. The inclusion criteria were any case-control or cohort study with or without a control non-cancer COVID-19 group published in English as a full text article involving patients with cancer and confirmed or suspected SARS-CoV-2 infection or COVID-19, which describe one or more of: the incidence, presentation, management, or outcome of cancer patients with COVID-19. We excluded studies with fewer than 10 patients, conference papers or abstracts, preprints, articles where the full text could not be extracted, studies where data could not be obtained by contacting the corresponding author and animal studies. Where studies with overlapping datasets were present, the paper with the largest and most up to date cohorts were included. Discrepancies were resolved by consensus.

### **Data extraction and quality assessment**

Two authors (E.K. and C.P.) independently undertook data extraction for the following: first author, study type, time period of data collection, country of data collection, number of male and female patients, median or mean age, cancer treatment intervals prior to COVID-19 diagnosis or hospitalisation, unadjusted and adjusted odds ratios (ORs) or hazard ratios (HRs) for severe disease and death for each cancer subtype and for each cancer treatment subtype as well as the number of cancer patients with COVID-19 and cancer type. We collected data on seven cancer subtypes; breast, gynaecological, genitourinary, skin, gastrointestinal, lung and haematological malignancies, as outcome data for these subtypes was most frequently reported within our pool of 81 studies. Data was collected on participant characteristics, global distribution of the studies, setting of care and presenting symptoms.

The quality of the included studies was assessed using the Newcastle-Ottawa scale (NOS) for case control and cohort studies (Figure S1)<sup>61</sup>. The eight questions within this scale were arranged into three groups: selection, comparability, and outcomes. Studies can earn a maximum of four stars from selection, two from comparability and three from outcomes, with a maximum score of 9 stars.

### **Outcomes and statistical analysis**

The main outcome of interest was mortality. We performed meta-analysis comparing mortality in cancer patients with COVID-19 to control patients (with COVID-19 but without

cancer) and in cancer patients with each tumour subtype compared to cancer patients who did not have that subtype. We also performed meta-analysis pooling case fatality rates for patients with each tumour subtype and those who had received each type of cancer treatments.

For meta-analysis of mortality comparing cancer patients and controls and comparing cancer patients with and without tumour subtypes, results are presented as pooled risk ratio (RR) and 95% confidence intervals (CIs). Meta-analyses of case fatality rate by tumour subtype and cancer treatment results are presented as pooled proportions and 95% CIs.

As statistical heterogeneity was anticipated due to expected variability in study design and participant characteristics, all meta-analyses were conducted using a random effects model, with restricted maximum likelihood to estimate between-studies heterogeneity. Statistical heterogeneity was quantified using the  $I^2$  statistic. To examine the impact of age and sex on mortality among cancer patients and controls, random-effects meta-regressions were conducted. Meta-analysis and meta-regression were conducted in Stata version 14.1 using commands `admetan`<sup>62</sup>, `metaprop`<sup>63</sup> and `metareg`<sup>64</sup>. Additional supplementary figures (of study characteristics were produced in R version 4.0.4 (Figures 4, Figure S3 – 6, S9, S11 & S14a-b).

## Results

The initial search retrieved 1,150 articles for review (Figure S2). After the inclusion of records identified through additional sources and removal of duplicate articles, 1,004 records were screened. We obtained 215 articles to assess for eligibility. Of these, 134 were excluded (see Figure S2 for reasons). Eighty-one studies were included in this systematic review and meta-analysis.

### Global distribution of studies

Eighty-one studies were included in this systematic review, with a total of 61,532 cancer patients with COVID-19 (Figure S3, Table S4). 61 were retrospective<sup>7,8,10-14,16-25,29-32,36-45,48,49,53-55,57-59,65-85</sup>, 17 were prospective<sup>4,26-28,33,35,46,50-52,56,86-91</sup> and three were retro-prospective studies, whereby data were collected on both patients eligible prior to study commencement and those who enter the study post study commencement<sup>9,15,47</sup>. Patients were recruited across 28 countries and 5 continents (Figure 1, Figure S4, Table S5). Of the 80 studies that provided information on recruitment by country, the five countries contributing the most patients were: USA, United Kingdom, Italy, France, and China.

### Patient characteristics and cancer types

Ten of 81 studies (12%) included cancer patients amongst a cohort that included non-cancer patients with COVID-19<sup>4,44,65,72,75,79,80,84,86,89,91</sup>; however, the majority of studies (n=71, 88%) reported on cohorts of cancer patients only. The number of cancer patients in the 81 reports ranged from 11 to 38,614. Where data were available, 52% (30,557 of 58,849) were male, age ranges from 10 to 98 years (median age range 35 to 74 years). The most frequent comorbid conditions reported were hypertension, diabetes mellitus, cardiovascular and pulmonary disease (Figures S5 – S7 & S10b and c). The majority (34,117; 55%) were hospitalised patients and the remainder were outpatients or unknown (Figure S9 and Table S7).

The majority of reports (n=55, 68%) included patients with both solid and haematological malignancies (total of 55,668 patients). 18 (22%) reported on patients with haematological malignancies alone (n=2,526 patients)<sup>11,17,18,23,25,29,32,40,43,50,51,53,54,56,58,59,67,77</sup>. Of these 18 studies: four reported exclusively on multiple myeloma and two on chronic lymphocytic leukaemia (CLL) patients. While 8 (10%) studies reported exclusively on patients with solid malignancies<sup>9,46-49,52,55,57</sup>, of these, 2 studies each reported on thoracic cancers<sup>46,49</sup>, gynaecological cancers<sup>48,57</sup> and breast cancer<sup>52,55</sup>. Tumour type was reported in 68 studies (84%) for 43,676 patients (71%) (Table S6). The most frequent were haematological malignancies representing 9,672 (22.1%) of patients followed by breast 8,322 (19.1%); genito-urinary 7,624 (17.4%); skin and melanoma 6,613 (14.1%); gastrointestinal 4,124 (9.4%) and thoracic cancer 2,104 (4.8%). For 1,139 patients (2.6%), the tumour type was documented as other or unknown (Figures S8 & S10A).

### Presenting symptoms of SARS-CoV-2 infection



Fifty-three (65%) of the 81 studies, involving 9,196 patients, reported presenting symptoms. The most commonly reported symptoms were fever, cough, dyspnoea, fatigue/malaise, diarrhoea, and myalgia (Figures S10 & S11). The time from onset of symptoms to hospitalisation ranged between 1-40 days, where reported <sup>10,46,48,53,66,69,78</sup>.

### **Radiological findings**

Radiological findings of thoracic imaging based on chest radiograph, CT scanning or a combination of chest radiograph and CT scan in cancer patients with COVID-19 were available in 28 studies (n=3,650 patients) <sup>10,13,14,17,25,31-33,35,39,42,43,45,50,52,54-58,66,69,78,81,83-85,87</sup>. A total of 19 (26%) studies (n=3,086 patients) provided details of radiological changes (Table S8) <sup>10,13,14,25,31-33,35,39,42,43,50,52,54,56,66,78,85,87</sup>. CT features of ground glass opacity, patchy shadows, fibrous stripes, pleural thickening, bilateral involvement, and tumour pulmonary involvement in cancer patients were associated with worsening severity of COVID-19 disease <sup>14,35,66,78,85,87</sup>.

### **Mortality of cancer patients compared with controls**

Nineteen of 81 studies (23.5%), compared patients with cancer and COVID-19 to a cohort of patients without cancer and COVID-19 <sup>12,14,16,18,19,21,23,26,29,36-43,45</sup>. The details of these studies, the matching of the cohorts and the nature of the cohort without cancer and COVID-19 are described in Table 1.

We conducted a meta-analysis of these 19 studies. The pooled relative risk (RR) of mortality in cancer patients with COVID-19 compared with non-cancer control patients with COVID-19 was 2.12 (95% CI, 1.71-2.62,  $p < 0.001$ ,  $I^2 = 84.4\%$ , Figure 2a). When pooling results, the relative risk for mortality in 13 studies that matched for age was reduced to RR 1.69 (95% CI, 1.46-1.95;  $I^2 = 51\%$ ;  $p < 0.001$ ) compared to RR 3.80 (95% CI, 2.53-5.71;  $I^2 = 81.9\%$ ,  $p < 0.001$ ) from six studies without matching (Figure 2b). There was little difference in the pooled RR of mortality between any type of malignancy, solid or haematological, (RR 2.23; 95% CI, 1.68-2.95;  $I^2 = 88.7\%$ ) and haematological malignancies (RR 1.81; 95% CI, 1.53-2.95;  $I^2 = 0.0\%$ ) alone compared to non-cancer control patients, respectively (Figure S12).

Fourteen studies provided data on the median or mean age of cancer patients and non-cancer patients with COVID-19 <sup>14,16,18,19,21,23,26,29,39-43,45</sup>. On univariate regression, when assessing the impact of age on the comparison of cancer and control patients, the RR of mortality statistically significantly decreased as age increased (exp (b) 0.96; 95% CI, 0.922 – 0.994;  $p = 0.028$ ), shows a greater difference in the relative risk of mortality between cancer patients and controls of younger ages (Figure 3a). Seventeen studies reported the sex (as proportion of males) of both cancer and non-cancer control groups <sup>14,16,18,19,21,23,26,29,37-45</sup>. A small increase in RR of mortality between cancer patients and controls was shown as the proportion of males in the study increased, but this was not statistically significant (exp (b) 1.89; 95% CI, 0.222–6.366;  $p = 0.83$ ; Figure 3b). When the combined impact of age and proportion of males was explored by multivariable regression, age remained significant ( $p = 0.029$ ) and male sex not significant ( $p = 0.545$ ) (Table S9).

### **Clinical outcomes**

Outcome data were available for 56,932 patients with cancer and COVID-19 from 68 (84%) of the 81 studies <sup>7-29,31-59,66-70,74,75,77,78,81-84,87,89,90</sup>. Where reported, 7.1% (1,170 of 16,409) were admitted to intensive care unit (ICU) and 5.2% (2,817 of 54,298) required invasive mechanical ventilation (IMV) (Table S10). At the time of reporting, 10.7% (473 of 4,403) of patients remained hospitalised and 64.5% (2,841 of 4,403) were discharged. Median duration of hospital stay is shown in Table S11. Of the 56,932 cancer patients, 6,813 died (12%). Median follow up times varied between 5 and 69 days. Mortality was reported in all studies and ranged from 3.7% to 61% (Figure 4, Table S12). Of note, one study defined mortality as either transfer to hospice or death <sup>22</sup>.

14 different definitions of severe events were used across the studies (Figure S13). 12 studies reported information on ethnicity and outcomes, (summarised in supplementary results document). In unadjusted analyses, several factors were found to be significantly associated with severe events or death. These included increasing age (in 36 studies), raised pro-inflammatory (in 14 studies) and infection related markers (in 14 studies), Figure S14a. Factors found to be significantly associated with worsening severity or mortality, in adjusted analysis are shown in Figure S14b, of which 22 studies found increasing age to be associated with worsening severity or death <sup>7-27</sup>. Factors included in adjusted analysis are listed in Figure S15.

### **Mortality and case fatality rate by cancer type**

Pooled case fatality rate forest plots for each cancer subtype are shown in Figure S16. There was a 9% (95% CI, 7% to 12%,  $I^2 = 89.8\%$ ; range: 0% to 100%) pooled case fatality rate for patients with breast cancer with a RR of mortality of 0.51 (95% CI, 0.36-0.71;  $p < 0.001$ ;  $I^2 = 86.2\%$ ) when compared with those with non-breast cancers and COVID-19 (Figure 5a). The pooled case fatality rate of patients with COVID-19 and gynaecological cancers was 12% (95% CI, 8%-16%;  $I^2 = 38.47\%$ ; range: 0% to 38%) and an associated RR of 0.76 (95% CI, 0.62-0.93;  $p = 0.009$ ;  $I^2 = 0\%$ ), between those with gynaecological cancers and patients with non-gynaecological cancers (Figure 5b).

Gastrointestinal cancers were associated with a pooled case fatality rate of 16% (95% CI, 12-20%;  $I^2 = 78.66\%$ ; range 0% to 38%) and a RR of 1.13 (95% CI, 0.93-1.37;  $p = 0.207$ ;  $I^2 = 54.8\%$ ) compared to patients with non-gastrointestinal cancers (Figure S17b). Skin cancer was associated with a pooled case fatality rate of 10% (95% CI, 5% to 15%;  $I^2 = 62.57\%$ ; range: 5% to 50%) and a relative risk of mortality of 0.85 (95% CI, 0.60-1.20;  $p = 0.353$ ;  $I^2 = 51.4\%$ ; Figure S17a).

The pooled case fatality rate of patients with COVID-19 and lung cancers was 30% (95% CI, 24%-37%;  $I^2 = 83.71\%$ ; range: 0% to 60%). The RR of mortality in those with lung cancer compared to other cancer types was significantly higher at 1.68 (95% CI, 1.45–1.94;  $p < 0.001$ ;  $I^2 = 32.9\%$ , Figure 6a). Pooled case fatality rate for genitourinary cancers was 22% (95% CI, 16% to 27%;  $I^2 = 92.61\%$ ; range: 8% to 50%), with a RR of mortality of 1.11 (95% CI, 1.00-1.24;  $p = 0.059$ ;  $I^2 = 21.5\%$ ), when compared to non-genitourinary cancers (Figure 6b). The pooled case fatality rate in patients with haematological malignancies was 32% (95% CI, 28%-37%;  $I^2 = 93.10\%$ ; range: 11% to 100%). The overall relative risk of mortality in cancer

patients with haematological malignancies, compared to those with solid malignancies is 1.42 (95% CI, 1.31-1.54;  $p < 0.001$ ;  $I^2 = 6.8\%$ , Figure 6c).

### Stage of malignancy and outcome

There was variability with regards to the reported effect of stage of malignancy on outcomes with COVID-19. In unadjusted analysis, 8 studies have reported stage IV disease (of solid cancers) to be associated with significantly higher risk of severe events and mortality compared to patients with stage I, II or III disease<sup>9,10,14,21,66,68,83,85</sup>. However, five studies found no association with metastatic primary disease late stage of disease and rates of hospitalisation or mortality<sup>22,30,31,35,46</sup>. A study of 181 patients in Brazil found that those with 2 or more metastatic sites had an overall increased risk of death<sup>26</sup>.

### Cancer treatment and course of COVID-19

Data on timing of cancer treatment and outcome were available in 64 of 81 (79%) of the reported studies (Figure S18). These studies comprised 54,335 patients of whom 7,567 (13.9%) had undergone or received some form of treatment for their malignant disease. Where data was available, the commonest treatment modality was chemotherapy ( $n=3,792$ ), followed by targeted therapy ( $n=1,700$ ) and immunotherapy ( $n=817$ ). 3,896 patients were reported as not having received any form of treatment.

Surgery, within 3 months of a diagnosis of COVID-19 in cancer patients was associated with a pooled case fatality of 19% (95% CI, 9%-29%;  $I^2 = 58.49\%$ ; range: 0% to 40%, Figure S18a). These studies in general looked at all patients, aside from one which was focused on surgery for gynaecological malignancies<sup>48</sup>. Patients with cancer who had received chemotherapy and were diagnosed with COVID-19 had an overall pooled case fatality of 30% (95% CI, 25%-36%;  $I^2 = 86.97\%$ ; range: 10% to 100%, Figure S18b). While endocrine therapy had a pooled mortality risk of 11% (95% CI, 6%-16%;  $I^2 = 70.68\%$ ; range: 0% to 27%, Figure 18c). 9 studies did not specify which cancer subtype was treated with endocrine therapy. Immunotherapy was associated with a pooled case fatality of 19% (95% CI, 16%-28%;  $I^2 = 36.98\%$ ; range: 0% to 50%, Figure S18d). Two of these studies specified the tumour involved, lung cancer<sup>49</sup> and gynaecological cancer<sup>48</sup>, with the remaining studies not specifying tumour type. Mortality following radiotherapy was available in 10 studies, with a pooled case fatality of 23% (95% CI, 12%-33%;  $I^2 = 74.84\%$ ; range: 0% to 50%, Figure S18e). Tumour type treated, gynaecological, was specified in only one study<sup>48</sup>. Targeted therapy was associated with an overall risk of mortality of 18% (95% CI, 12%-23%;  $I^2 = 59.72\%$ ; range: 0% to 57%, Figure S18f). The nature of the targeted therapy was not specified in most cases and the specific cancer type was only stated in 4 of 19 studies (21%): two involving patients with haematological malignancies<sup>25,58</sup>, and one respectively for patients with lung<sup>49</sup>, and gynaecological cancer and COVID-19<sup>48</sup>. These data are in Table S13.

## Discussion

From the start of the SARS-CoV-2 pandemic, there has been a focus to identify the patients at greatest risk of poor outcome from infection. Patients with malignant disease were rapidly identified as one such group<sup>92</sup>. Initial reports of SARS-CoV-2 infection in cancer patients were small and retrospective<sup>26,43,57,58,81,82,90</sup>, subsequently larger collaborative registry studies, prospective and retrospective, have been reported<sup>4,7,37,46,47,93,94</sup>. These studies have varied in geographical location and focus with regards to tumour type (Table S4). This systematic review and meta-analysis sought to analyse in an unbiased fashion this important global effort by the cancer community by reviewing all of the available and published data as of the June 14<sup>th</sup> 2021. The aim being to understand the impact of cancer type, stage and treatment on outcomes from COVID-19 as well as identifying possible novel risk factors in cancer patients not identified in previous studies.

This systematic review demonstrates a number of potential limitations with the currently available data and literature these include; (1) lack of contemporaneous non-cancer populations for comparative analysis<sup>12,19,23,36,38,40</sup>; (2) heterogeneity of definitions between studies such as severity of COVID-19 as demonstrated by the 14 definitions of severity used across studies (Figure S13); (3) predominantly retrospective nature of studies (Table S4, 75%); (4) variable follow up; (5) heterogeneity or poor description of the non-cancer control cohorts, such as use of non-hospitalised patients<sup>12,21,29,36-38,44</sup>, or staff members with COVID-19<sup>43</sup>; and (6) lack of detail relating to systemic cancer treatment<sup>4,11,12,22,29,33,37,39,41,42,50,52,55-57,65,70-72,75,76,79-81,84,86-91</sup>. In those studies where a non-cancer cohort was utilised these data were generally historical or based on registry data and were not contemporaneous to the cancer cohort<sup>12,19,36,38,43</sup>. Only three of the 19 studies that compared cancer cohort to a matched non-cancer cohort used propensity score matching<sup>14,16,39</sup>. Therefore, within the published literature biases may be present as a result of unmeasured confounders.

Utilising data from 19 studies with 3,926 patients with 38,847 non-contemporaneous non-cancer patients, we found that malignant disease is associated with an increased risk of severe or death from COVID-19 compared with non-cancer patients (RR 2.12; 95% CI, 1.76-2.62;  $p < 0.001$ ;  $I^2 = 84.4\%$ ). In particular, we demonstrate via regression analysis that younger age is associated with a worse clinical outcome relative to age matched non-cancer patients. To date, all the cohort studies, which by their nature have lacked an age matched control, have consistently reported increasing age as a risk factor for poor clinical outcome<sup>7-27</sup>. While it is true older patients have a worse absolute outcome than younger patients, the relative risk, as shown in this review, is highest for the younger patients. This observation has been reported within the International Severe Acute Respiratory and emerging Infections Consortium (ISARIAC) WHO Coronavirus Clinical Characterisation Consortium (CCP-Cancer UK)<sup>93,94</sup>. In the most recently presented analysis of over 20,000 cancer patients compared with 155,000 non-cancer patients, patients aged less than 50, particularly on active treatment, were five times more likely to die than similar aged non-cancer patients (<50 years, HR 5.22; 95% CI, 4.19 to 6.52;  $p < 0.001$ ). When compared with non-cancer

patients the relative risk of death (the cancer attributable risk) fell with age<sup>94</sup>. The reasons for this are likely to be related to the type of cancers, more intensive treatments, or possibly behavioural factors such as increased social mixing as compared with an older population.

Our meta-analysis also demonstrates that cancer patients with COVID-19 are twice more likely to die compared to non-cancer matched cohorts. However, when we matched these patients for age and sex, the risk decreased to 1.69 (95% CI 1.46-1.95,  $p < 0.001$ ;  $I^2 = 51\%$ ). This risk, while significant, is lower than that reported by studies that did not match for these factors, where the risk was nearly four times greater in the cancer cohort<sup>26,36,38,41,43,44</sup>. This demonstrates that there has been a potential overestimation of the true risk to cancer patients in studies that did not adjust for these factors. This also highlights the critical importance of a comparator non-cancer cohort in understanding the true effects of SARS-CoV-2 within the cancer population. We did not observe any significant differences in outcome by sex when cancer and non-cancer patients were compared again, this is different from a number of studies which have reported male sex as a risk factor<sup>7,10,18,22,23,28,31,66</sup>.

Our study found that patients with lung cancer, followed by haematological malignancies, were at greatest risk of mortality from COVID-19, when compared with patients with other cancers. Haematological malignancies have been consistently reported as being a risk factor for poor outcome from COVID-19<sup>7,8,11,23,28,31,32</sup> and the current meta-analysis demonstrates that such patients are 1.42 times (95% CI, 1.31-1.54;  $p < 0.001$ ;  $I^2 = 6.8\%$ ) more likely to die compared with other cancer patients and 1.8 times (95% CI, 1.53-2.95;  $I^2 = 0.0\%$ ) more likely to die compared with non-cancer COVID-19 patients. The increased susceptibility of patients with haematological malignancy is in keeping with the more profound immune suppression that affects this patient group. The increased mortality with lung cancer (RR 1.68; 95% CI, 1.45–1.94;  $p < 0.001$ ;  $I^2 = 32.9\%$ ) compared with patients without lung cancer is likely a reflection of age, the reduced lung reserve, associated co-morbidities associated, and possible effects of cancer treatment. The reason for the lower mortality from COVID-19 seen in patients with breast and gynaecological malignancies is not clear. It could be related to the protective effect of the female sex although we find no difference in outcomes based on sex with our meta-analysis. A possible alternative explanation relates to the hormonal milieu in these patients, with patients with both breast and gynaecological cancers have low circulating oestradiol levels. Breast cancer patients by virtue of the fact they are generally post-menopausal and often on aromatase inhibitors. While treatment for gynaecological cancers often necessitate removal of the ovaries. The possible influence of endocrine therapy has been reported for patients with prostate cancer where the use of androgen deprivation therapy has been associated with a protective effect from SARS-CoV-2 infection<sup>38</sup>. There is an ongoing need to dissect the impact of female sex hormones on infection with SARS-CoV-2 as well as the course of COVID-19.

With regard to cancer treatments our pooled case fatality analysis found endocrine therapy to have the lowest pooled case fatality rate at 11% with chemotherapy having the highest at 30%. The higher mortality seen with chemotherapy compared to other treatments is likely reflective of the immunosuppressive effects chemotherapy. Cohort studies have reported disparate findings with regard to the risk of chemotherapy, with some finding significant increase risk of death<sup>8,9,26,28,36,40,46,66,85</sup>, and others finding no association<sup>13-16,20,24,25,27,30,31,34,35,48,58,68,74</sup>. The lack of patient level data means we have been unable to

define the risk of mortality for cancer patients receiving anti-cancer therapy who develop COVID-19. Similarly, for a comparison of the impact of cancer treatment on the risk of mortality when compared to non-cancer patients. A comparison of risk by different treatment modalities as well as by individual agents also was not possible given it was not clear if patients had received more than one treatment modality and individual drugs were not named. For a more informed approach and discussion regarding the risk of different anti-cancer therapy in the context of COVID-19 will require more granular information as well as a comparison to a non-cancer population controlled by age and sex.

This systematic review and meta-analysis has a number of limitations given the nature of the data published and available for analysis. Firstly, we assessed outcomes in 7 tumour types as outcome data for these were most frequently reported within the reported studies, thus we were not able to examine the relative risk of mortality of other cancer types. Secondly, it was not possible to compare solid cancers to a control non-cancer cohort as there were no suitable studies identified. Thirdly, we are unable to explore the potential effects of different SARS-CoV-2 variants given this information was not available. Finally, the data included in this meta-analysis is in the pre-vaccination and anti-viral medication part of the pandemic, and therefore vaccinations and active treatments may impact on the observations made within this meta-analysis.

## **Conclusion**

In this large and comprehensive analysis of the available data we demonstrate a higher risk of death from COVID-19 for cancer patients when compared to non-cancer patients, although the risk is lower than that reported by individual cohort studies. Younger patients are shown to be at particular increased risk of poor clinical outcomes when compared to age-matched controls. With lung cancer patients having the highest risk of mortality, along with patients with haematological malignancies. Given these data, younger patients must be classified as being a high-risk population. On-going studies such as CCP-Cancer-UK will enable a comparison of non-cancer versus cancer patients controlled for age, sex and other co-morbidities as well as dissecting the true risk different tumour types and treatment controlling for patient level factors. Studies are also needed to assess the impact of mitigation and treatment measures over the time course of the pandemic between cancer and non-cancer patients particularly given many of the treatment studies did not recruit cancer patients. The global effort to understand the effects of SARS-CoV-2 on cancer patients has resulted in a rich data resource which should be utilised for an individual patient level meta-analysis. Such data will be vital in ensuring we maximize our learning and knowledge and to prepare the cancer community for the subsequent pandemics which will inevitably occur.

## **Acknowledgments**

The authors acknowledge support from UK Research Innovation (UKRI)-Department for Health and Social Care (DHSC) COVID-19 Rapid Response Rolling Call (Grant reference MR/V028979/1), The Liverpool Experimental Cancer Medicine Centre [Grant Reference: C18616/A25153], Cancer Research UK, The Clatterbridge Cancer Charity and North West Cancer.

## **Funding**

EK: This work was supported by North West Cancer Research Fund to support an MRes (Award number CR1054).

LT is supported by a Wellcome Trust fellowship [205228/Z/16/Z]. This research was funded in whole, or in part, by the Wellcome Trust. For the purpose of Open Access, the authors have applied a CC BY public copyright licence to any Author Accepted Manuscript version arising from this submission. LT is also supported by the U.S. Food and Drug Administration Medical Countermeasures Initiative contract 75F40120C00085 and by the National Institute for Health Research Health Protection Research Unit (HPRU) in Emerging and Zoonotic Infections (NIHR200907) at University of Liverpool in partnership with Public Health England (PHE), in collaboration with Liverpool School of Tropical Medicine and the University of Oxford. LT is based at University of Liverpool. The views expressed are those of the author(s) and not necessarily those of the NHS, the NIHR, the Department of Health or Public Health England.

## **Competing Interests**

LT has received speakers' fees, paid to the University of Liverpool, from Eisai Ltd for lecturing on cancer and COVID-19

CP Grant funding from Pfizer and Daiichi Sankyo and honoraria from Pfizer, Roche, Daiichi Sankyo, Novartis, Exact sciences, Gilead, SeaGen and Eli Lilly.

All remaining authors have declared no conflicts of interest.

## References:

1. Chemaly RF, Vigil KJ, Saad M, et al. A multicenter study of pandemic influenza A (H1N1) infection in patients with solid tumors in 3 countries: early therapy improves outcomes. *Cancer* 2012; **118**(18): 4627-33.
2. Dignani MC, Costantini P, Salgueira C, et al. Pandemic 2009 Influenza A (H1N1) virus infection in cancer and hematopoietic stem cell transplant recipients; a multicenter observational study. *F1000Res* 2014; **3**: 221.
3. Campbell AP, Guthrie KA, Englund JA, et al. Clinical outcomes associated with respiratory virus detection before allogeneic hematopoietic stem cell transplant. *Clin Infect Dis* 2015; **61**(2): 192-202.
4. Docherty AB, Harrison EM, Green CA, et al. Features of 2020-2021 UK patients in hospital with covid-19 using the ISARIC WHO Clinical Characterisation Protocol: prospective observational cohort study. *BMJ* 2020; **369**: m1985.
5. Richards-Belle A, Orzechowska I, Gould DW, et al. COVID-19 in critical care: epidemiology of the first epidemic wave across England, Wales and Northern Ireland. *Intensive Care Med* 2020; **46**(11): 2035-47.
6. Ferrando-Vivas P, Doidge J, Thomas K, et al. Prognostic Factors for 30-Day Mortality in Critically Ill Patients With Coronavirus Disease 2019: An Observational Cohort Study. *Crit Care Med* 2021; **49**(1): 102-11.
7. Grivas P, Khaki AR, Wise-Draper TM, et al. Association of clinical factors and recent anticancer therapy with COVID-19 severity among patients with cancer: a report from the COVID-19 and Cancer Consortium. *Ann Oncol* 2021; **32**(6): 787-800.
8. Sharafeldin N, Bates B, Song Q, et al. Outcomes of COVID-19 in Patients With Cancer: Report From the National COVID Cohort Collaborative (N3C). *Journal of Clinical Oncology*; **0**(0): JCO.21.01074.
9. Lièvre A, Turpin A, Ray-Coquard I, et al. Risk factors for Coronavirus Disease 2019 (COVID-19) severity and mortality among solid cancer patients and impact of the disease on anticancer treatment: A French nationwide cohort study (GCO-002 CACOV-19). *European Journal of Cancer* 2020; **141**: 62-81.
10. Pinato DJ, Zambelli A, Aguilar-Company J, et al. Clinical portrait of the SARS-CoV-2 epidemic in European cancer patients. *Cancer Discov* 2020; **10**(10): 1465-74.
11. Passamonti F, Cattaneo C, Arcaini L, et al. Clinical characteristics and risk factors associated with COVID-19 severity in patients with haematological malignancies in Italy: a retrospective, multicentre, cohort study. *The Lancet Haematology* 2020; **7**(10): e737-e45.
12. Miyashita H, Mikami T, Chopra N, et al. Do patients with cancer have a poorer prognosis of COVID-19? An experience in New York City. *Ann Oncol* 2020; **31**(8): 1088-9.
13. Robilotti EV, Babady NE, Mead PA, et al. Determinants of COVID-19 disease severity in patients with cancer. *Nature Medicine* 2020; **26**(8): 1218-23.
14. Tian JB, Yuan XL, Xiao J, et al. Clinical characteristics and risk factors associated with COVID-19 disease severity in patients with cancer in Wuhan, China: a multicentre, retrospective, cohort study. *Lancet Oncology* 2020; **21**(7): 893-903.
15. Di Cosimo S, Tagliaferri B, Generali D, et al. Baseline Characteristics and Outcomes of Cancer Patients Infected with SARS-CoV-2 in the Lombardy Region, Italy (AIOM-L CORONA): A Multicenter, Observational, Ambispective, Cohort Study. *Cancers (Basel)* 2021; **13**(6).



16. Mehta V, Goel S, Kabarriti R, et al. Case Fatality Rate of Cancer Patients with COVID-19 in a New York Hospital System. *Cancer discovery* 2020; **10**(7): 935-41.
17. Mato AR, Roeker LE, Lamanna N, et al. Outcomes of COVID-19 in patients with CLL: a multicenter international experience. *Blood* 2020; **136**(10): 1134-43.
18. Martínez-López J, Mateos MV, Encinas C, et al. Multiple myeloma and SARS-CoV-2 infection: clinical characteristics and prognostic factors of inpatient mortality. *Blood Cancer Journal* 2020; **10**(10).
19. Brar G, Pinheiro LC, Shusterman M, et al. COVID-19 Severity and Outcomes in Patients With Cancer: A Matched Cohort Study. *Journal of Clinical Oncology* 2020; **38**(33): 3914-24.
20. Zhang H, Wang L, Chen Y, et al. Outcomes of novel coronavirus disease 2019 (COVID-19) infection in 107 patients with cancer from Wuhan, China. *Cancer* 2020; **126**(17): 4023-31.
21. Dai M, Liu D, Liu M, et al. Patients with Cancer Appear More Vulnerable to SARS-CoV-2: A Multicenter Study during the COVID-19 Outbreak. *Cancer discovery* 2020; **10**(6): 783-91.
22. Singh SRK, Thanikachalam K, Jabbour-Aida H, Poisson LM, Khan G. Covid-19 and cancer: Lessons learnt from a michigan hotspot. *Cancers* 2020; **12**(9): 1-13.
23. Shah V, Ko TK, Zuckerman M, et al. Poor outcome and prolonged persistence of SARS-CoV-2 RNA in COVID-19 patients with haematological malignancies; King's College Hospital experience. *British Journal of Haematology* 2020; **190**(5): E279-E82.
24. Rogado J, Obispo B, Pangua C, et al. Covid-19 transmission, outcome and associated risk factors in cancer patients at the first month of the pandemic in a Spanish hospital in Madrid. *Clinical and Translational Oncology* 2020; **22**(12): 2364-8.
25. Sanchez-Pina JM, Rodríguez Rodríguez M, Castro Quismondo N, et al. Clinical course and risk factors for mortality from COVID-19 in patients with haematological malignancies. *European Journal of Haematology* 2020; **105**(5): 597-607.
26. Liang W, Guan W, Chen R, et al. Cancer patients in SARS-CoV-2 infection: a nationwide analysis in China. *The Lancet Oncology* 2020; **21**(3): 335-7.
27. Ferrari BL, Ferreira CG, Menezes M, et al. Determinants of COVID-19 Mortality in Patients With Cancer From a Community Oncology Practice in Brazil. *JCO Global Oncology* 2021; (7): 46-55.
28. Lee LYW, Cozier JB, Starkey T, et al. COVID-19 prevalence and mortality in patients with cancer and the effect of primary tumour subtype and patient demographics: a prospective cohort study. *Lancet Oncology* 2020; **21**(10): 1309-16.
29. Yigenoglu TN, Ata N, Altuntas F, et al. The outcome of COVID-19 in patients with hematological malignancy. *Journal of Medical Virology* 2020.
30. de Joode K, Dumoulin DW, Tol J, et al. Dutch Oncology COVID-19 consortium: Outcome of COVID-19 in patients with cancer in a nationwide cohort study. *European Journal of Cancer* 2020; **141**: 171-84.
31. Jee J, Foote MB, Lumish M, et al. Chemotherapy and COVID-19 Outcomes in Patients With Cancer. *Journal of Clinical Oncology* 2020; **38**(30): 3538-46.
32. Martín-Moro F, Marquet J, Piris M, et al. Survival study of hospitalised patients with concurrent COVID-19 and haematological malignancies. *British Journal of Haematology* 2020; **190**(1): e16-e20.
33. Basse C, Diakite S, Servois V, et al. Characteristics and Outcome of SARS-CoV-2 Infection in Cancer Patients. *JNCI Cancer Spectrum* 2021; **5**(1).
34. Mehta A, Vasudevan S, Parkash A, Sharma A, Vashist T, Krishna V. COVID-19 mortality in cancer patients: a report from a tertiary cancer centre in India. *PeerJ* 2021; **9**: e10599.
35. Yarza R, Bover M, Paredes D, et al. SARS-CoV-2 infection in cancer patients undergoing active treatment: analysis of clinical features and predictive factors for severe respiratory failure and death. *European journal of cancer (Oxford, England : 1990)* 2020; **135**: 242-50.
36. Johannesen TB, Smeland S, Aaserud S, et al. COVID-19 in Cancer Patients, Risk Factors for Disease and Adverse Outcome, a Population-Based Study From Norway. *Frontiers in Oncology* 2021; **11**(1010).

37. Rùthrich MM, Giessen-Jung C, Borgmann S, et al. COVID-19 in cancer patients: clinical characteristics and outcome-an analysis of the LEOSS registry. *Ann Hematol* 2020; 1-11.
38. Montopoli M, Zumerle S, Vettor R, et al. Androgen-deprivation therapies for prostate cancer and risk of infection by SARS-CoV-2: a population-based study (N = 4532). *Annals of oncology : official journal of the European Society for Medical Oncology* 2020; **31**(8): 1040-5.
39. Meng Y, Lu W, Guo E, et al. Cancer history is an independent risk factor for mortality in hospitalized COVID-19 patients: a propensity score-matched analysis. *J Hematol Oncol* 2020; **13**(1): 75.
40. Cattaneo C, Daffini R, Pagani C, et al. Clinical characteristics and risk factors for mortality in hematologic patients affected by COVID-19. *Cancer* 2020; **126**(23): 5069-76.
41. Sun L, Surya S, Le AN, et al. Rates of COVID-19-Related Outcomes in Cancer Compared With Noncancer Patients. *JNCI Cancer Spectr* 2021; **5**(1): pkaa120.
42. Stroppa EM, Toscani I, Citterio C, et al. Coronavirus disease-2019 in cancer patients. A report of the first 25 cancer patients in a western country (Italy). *Future oncology (London, England)* 2020; **16**(20): 1425-32.
43. He WJ, Chen L, Chen L, et al. COVID-19 in persons with haematological cancers. *Leukemia* 2020; **34**(6): 1637-45.
44. Lunski MJ, Burton J, Tawagi K, et al. Multivariate mortality analyses in COVID-19: Comparing patients with cancer and patients without cancer in Louisiana. *Cancer* 2021; **127**(2): 266-74.
45. Joharatnam-Hogan N, Hochhauser D, Shiu K-K, et al. Outcomes of the 2019 novel coronavirus in patients with or without a history of cancer: a multi-centre North London experience. *Therapeutic Advances in Medical Oncology* 2020; **12**: 1758835920956803.
46. Garassino MC, Whisenant JG, Huang L-C, et al. COVID-19 in patients with thoracic malignancies (TERAVOLT): first results of an international, registry-based, cohort study. *The Lancet Oncology* 2020; **21**(7): 914-22.
47. Özdemir N, Dizdar Ö, Yazıcı O, et al. Clinical features and outcomes of COVID-19 in patients with solid tumors: Turkish National Registry Data. *Int J Cancer* 2020.
48. Lara OD, O’Cearbhaill RE, Smith MJ, et al. COVID-19 outcomes of patients with gynecologic cancer in New York City. *Cancer* 2020; **126**(19): 4294-303.
49. Luo J, Rizvi H, Preeshagul IR, et al. COVID-19 in patients with lung cancer. *Annals of oncology : official journal of the European Society for Medical Oncology* 2020; **31**(10): 1386-96.
50. Cook G, John Ashcroft A, Pratt G, et al. Real-world assessment of the clinical impact of symptomatic infection with severe acute respiratory syndrome coronavirus (COVID-19 disease) in patients with multiple myeloma receiving systemic anti-cancer therapy. *British Journal of Haematology* 2020; **190**(2): e83-e6.
51. Booth S, Willan J, Wong H, et al. Regional outcomes of severe acute respiratory syndrome coronavirus 2 infection in hospitalised patients with haematological malignancy. *European Journal of Haematology* 2020; **105**(4): 476-83.
52. Vuagnat P, Frelaut M, Ramtohl T, et al. COVID-19 in breast cancer patients: a cohort at the Institut Curie hospitals in the Paris area. *Breast Cancer Research* 2020; **22**(1): 55.
53. Wang B, Van Oekelen O, Mouhieddine TH, et al. A tertiary center experience of multiple myeloma patients with COVID-19: Lessons learned and the path forward. *Journal of Hematology and Oncology* 2020; **13**(1).
54. Fox TA, Troy-Barnes E, Kirkwood AA, et al. Clinical outcomes and risk factors for severe COVID-19 in patients with haematological disorders receiving chemo- or immunotherapy. *British Journal of Haematology* 2020; **191**(2): 194-206.
55. Kalinsky K, Accordino MK, Hosi K, et al. Characteristics and outcomes of patients with breast cancer diagnosed with SARS-Cov-2 infection at an academic center in New York City. *Breast Cancer Res Treat* 2020; **182**(1): 239-42.
56. Malard F, Genthon A, Brissot E, et al. COVID-19 outcomes in patients with hematologic disease. *Bone Marrow Transplant* 2020; **55**(11): 2180-4.

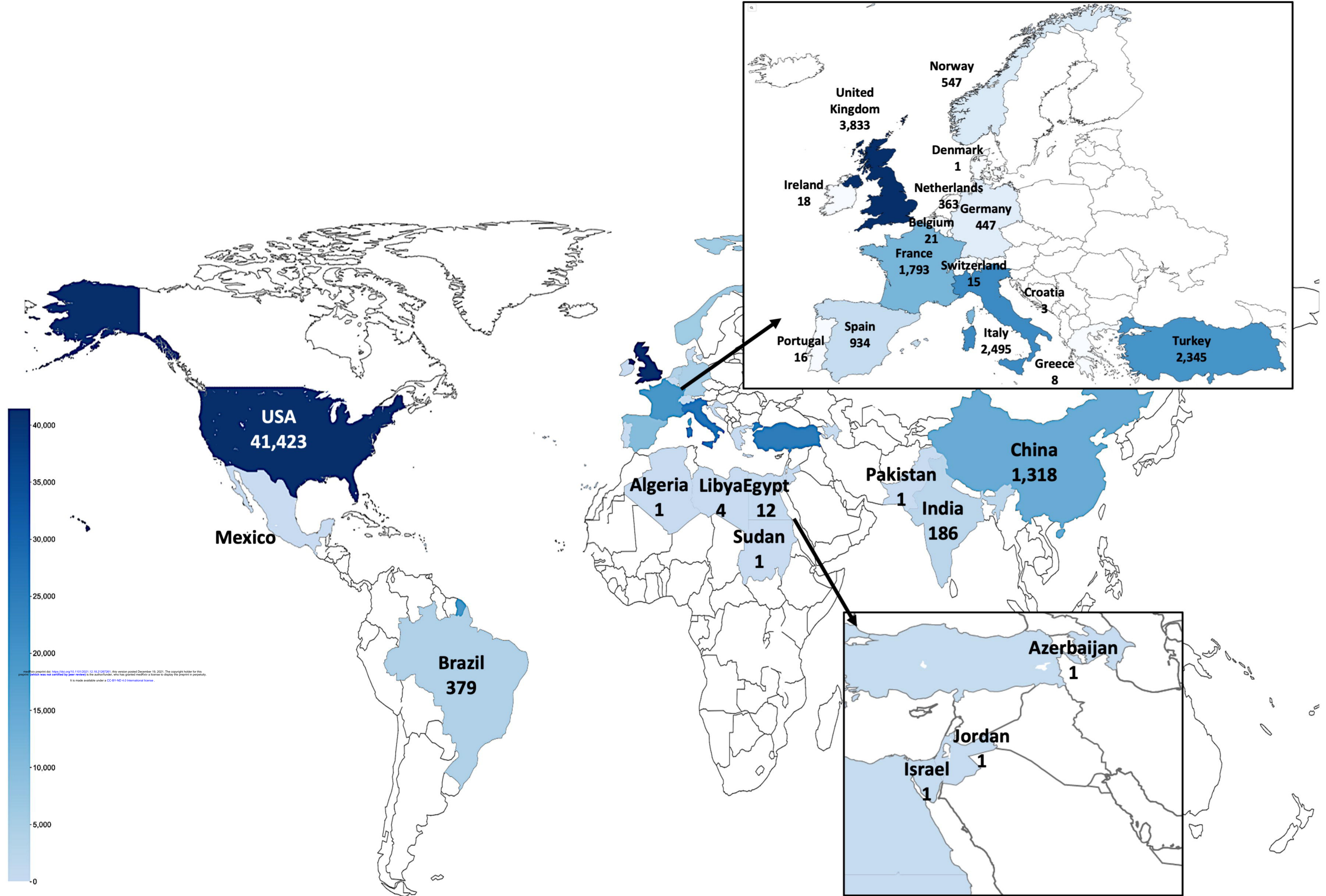
57. Bogani G, Ditto A, Bosio S, Brusadelli C, Raspagliesi F. Cancer patients affected by COVID-19: Experience from Milan, Lombardy. *Gynecologic Oncology* 2020; **158**(2): 262-5.
58. Lattenist R, Yildiz H, De Greef J, Bailly S, Yombi JC. COVID-19 in Adult Patients with Hematological Disease: Analysis of Clinical Characteristics and Outcomes. *Indian journal of hematology & blood transfusion : an official journal of Indian Society of Hematology and Blood Transfusion* 2020; 1-5.
59. Hultcrantz M, Richter J, Rosenbaum CA, et al. COVID-19 Infections and Clinical Outcomes in Patients with Multiple Myeloma in New York City: A Cohort Study from Five Academic Centers. *Blood Cancer Discovery* 2020; **1**(3): 234-43.
60. Moher D, Liberati A, Tetzlaff J, Altman DG. Preferred reporting items for systematic reviews and meta-analyses: the PRISMA statement. *BMJ* 2009; **339**: b2535.
61. Wells G, Shea B, O'Connell D, et al. The Newcastle-Ottawa Scale (NOS) for Assessing the Quality of Nonrandomised Studies in Meta-Analyses. 2014; 2014.
62. Fisher DJ. Two-stage Individual Participant Data Meta-analysis and Generalized Forest Plots. *The Stata Journal* 2015; **15**(2): 369-96.
63. Nyaga VN, Arbyn M, Aerts M. Metaprop: a Stata command to perform meta-analysis of binomial data. *Archives of Public Health* 2014; **72**(1): 39.
64. Harbord RM, Higgins JPT. Meta-Regression in Stata. *The Stata Journal* 2008; **8**(4): 493-519.
65. Grasselli G, Greco M, Zanella A, et al. Risk Factors Associated With Mortality Among Patients With COVID-19 in Intensive Care Units in Lombardy, Italy. *JAMA Internal Medicine* 2020; **180**(10): 1345-55.
66. Yang KY, Sheng YH, Huang CL, et al. Clinical characteristics, outcomes, and risk factors for mortality in patients with cancer and COVID-19 in Hubei, China: a multicentre, retrospective, cohort study. *Lancet Oncology* 2020; **21**(7): 904-13.
67. Scarfò L, Chatzikonstantinou T, Rigolin GM, et al. COVID-19 severity and mortality in patients with chronic lymphocytic leukemia: a joint study by ERIC, the European Research Initiative on CLL, and CLL Campus. *Leukemia* 2020; **34**(9): 2354-63.
68. de Melo AC, Thuler LCS, da Silva JL, et al. Cancer inpatients with COVID-19: A report from the Brazilian National Cancer Institute. *PLoS One* 2020; **15**(10): e0241261.
69. Albiges L, Foulon S, Bayle A, et al. Determinants of the outcomes of patients with cancer infected with SARS-CoV-2: results from the Gustave Roussy cohort. *Nature Cancer* 2020; **1**(10): 965-75.
70. Russell B, Moss C, Papa S, et al. Factors Affecting COVID-19 Outcomes in Cancer Patients: A First Report From Guy's Cancer Center in London. *Frontiers in Oncology* 2020; **10**.
71. Fratino L, Procopio G, Di Maio M, Cinieri S, Leo S, Beretta G. Coronavirus: Older Persons With Cancer in Italy in the COVID-19 Pandemic. *Frontiers in oncology* 2020; **10**: 648-.
72. Deng G, Yin M, Chen X, Zeng F. Clinical determinants for fatality of 44,672 patients with COVID-19. *Critical Care* 2020; **24**(1): 179.
73. Kabarriti R, Brodin NP, Maron MI, et al. Extent of Prior Lung Irradiation and Mortality in COVID-19 Patients With a Cancer History. *Advances in Radiation Oncology* 2020; **5**(4): 707-10.
74. Yang F, Shi S, Zhu J, Shi J, Dai K, Chen X. Clinical characteristics and outcomes of cancer patients with COVID-19. *J Med Virol* 2020; **92**(10): 2067-73.
75. Suleyman G, Fadel RA, Malette KM, et al. Clinical Characteristics and Morbidity Associated With Coronavirus Disease 2019 in a Series of Patients in Metropolitan Detroit. *JAMA Network Open* 2020; **3**(6): e2012270-e.
76. Ma J, Yin J, Qian Y, Wu Y. Clinical characteristics and prognosis in cancer patients with COVID-19: A single center's retrospective study. *Journal of Infection* 2020; **81**(2): 318-56.
77. Aries JA, Davies JK, Auer RL, et al. Clinical outcome of coronavirus disease 2019 in haemato-oncology patients. *British Journal of Haematology* 2020; **190**(2): e64-e7.
78. Zhang L, Zhu F, Xie L, et al. Clinical characteristics of COVID-19-infected cancer patients: a retrospective case study in three hospitals within Wuhan, China. *Ann Oncol* 2020; **31**(7): 894-901.

79. Tomlins J, Hamilton F, Gunning S, Sheehy C, Moran E, MacGowan A. Clinical features of 95 sequential hospitalised patients with novel coronavirus 2019 disease (COVID-19), the first UK cohort. *J Infect* 2020; **81**(2): e59-e61.
80. Wang L, He W, Yu X, et al. Coronavirus disease 2019 in elderly patients: Characteristics and prognostic factors based on 4-week follow-up. *J Infect* 2020; **80**(6): 639-45.
81. Yu J, Ouyang W, Chua MLK, Xie C. SARS-CoV-2 Transmission in Patients With Cancer at a Tertiary Care Hospital in Wuhan, China. *JAMA Oncology* 2020; **6**(7): 1108-10.
82. Wu Q, Chu Q, Zhang H, et al. Clinical outcomes of coronavirus disease 2019 (COVID-19) in cancer patients with prior exposure to immune checkpoint inhibitors. *Cancer Communications* 2020; **40**(8): 374-9.
83. Erdal GS, Polat O, Erdem GU, et al. The mortality rate of COVID-19 was high in cancer patients: a retrospective single-center study. *Int J Clin Oncol* 2021; **26**(5): 826-34.
84. Guan W-j, Liang W-h, Zhao Y, et al. Comorbidity and its impact on 1590 patients with COVID-19 in China: a nationwide analysis. *European Respiratory Journal* 2020; **55**(5): 2000547.
85. Song K, Gong H, Xu B, et al. Association between recent oncologic treatment and mortality among patients with carcinoma who are hospitalized with COVID-19: A multicenter study. *Cancer* 2021; **127**(3): 437-48.
86. Nepogodiev D, Bhangu A, Glasbey JC, et al. Mortality and pulmonary complications in patients undergoing surgery with perioperative SARS-CoV-2 infection: an international cohort study. *The Lancet* 2020; **396**(10243): 27-38.
87. Angelis V, Tippu Z, Joshi K, et al. Defining the true impact of coronavirus disease 2019 in the at-risk population of patients with cancer. *Eur J Cancer* 2020; **136**: 99-106.
88. Assaad S, Avrillon V, Fournier ML, et al. High mortality rate in cancer patients with symptoms of COVID-19 with or without detectable SARS-COV-2 on RT-PCR. *European Journal of Cancer* 2020; **135**: 251-9.
89. Ciceri F, Castagna A, Rovere-Querini P, et al. Early predictors of clinical outcomes of COVID-19 outbreak in Milan, Italy. *Clin Immunol* 2020; **217**: 108509.
90. Tagliamento M, Lambertini M, Genova C, et al. Call for ensuring cancer care continuity during COVID-19 pandemic. *ESMO Open* 2020; **5**(3): e000783.
91. Gupta S, Hayek SS, Wang W, et al. Factors Associated With Death in Critically Ill Patients With Coronavirus Disease 2019 in the US. *JAMA Internal Medicine* 2020; **180**(11): 1436-47.
92. Desai A, Gupta R, Advani S, et al. Mortality in hospitalized patients with cancer and coronavirus disease 2019: A systematic review and meta-analysis of cohort studies. *Cancer* 2021; **127**(9): 1459-68.
93. Palmieri C, Palmer D, Openshaw PJM, Baille JK, Semple MG, Turtle L. Cancer datasets and the SARS-CoV-2 pandemic: Establishing principles for collaboration. *ESMO Open* 2020; **5**(3).
94. Palmieri C, Turtle L, Drake T, et al. LBA60 Prospective data of >20,000 hospitalised patients with cancer and COVID-19 derived from the International Severe Acute Respiratory and emerging Infections Consortium WHO Coronavirus Clinical Characterisation Consortium: CCP-CANCER UK. *Annals of Oncology* 2021; **32**: S1337-S.

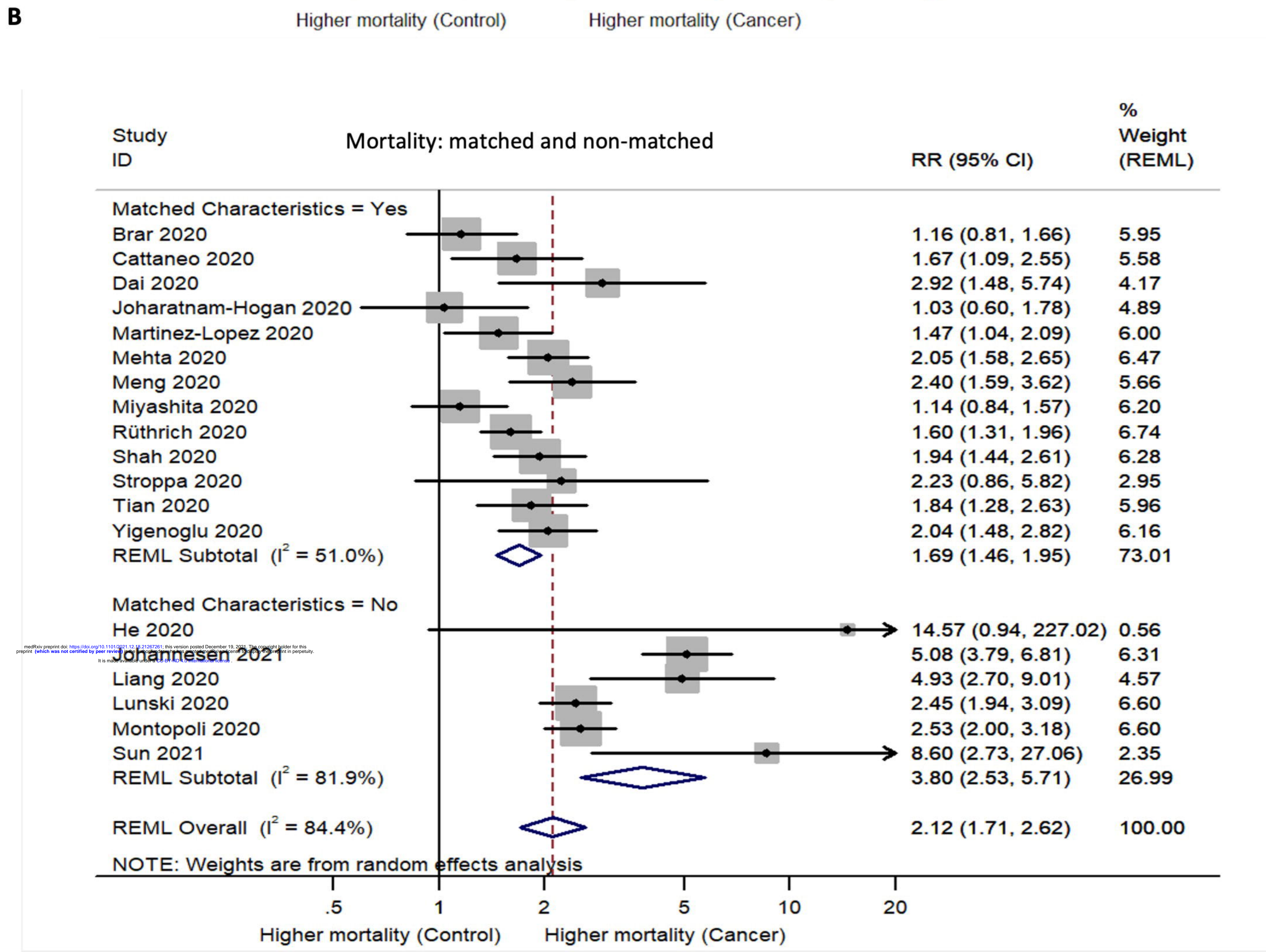
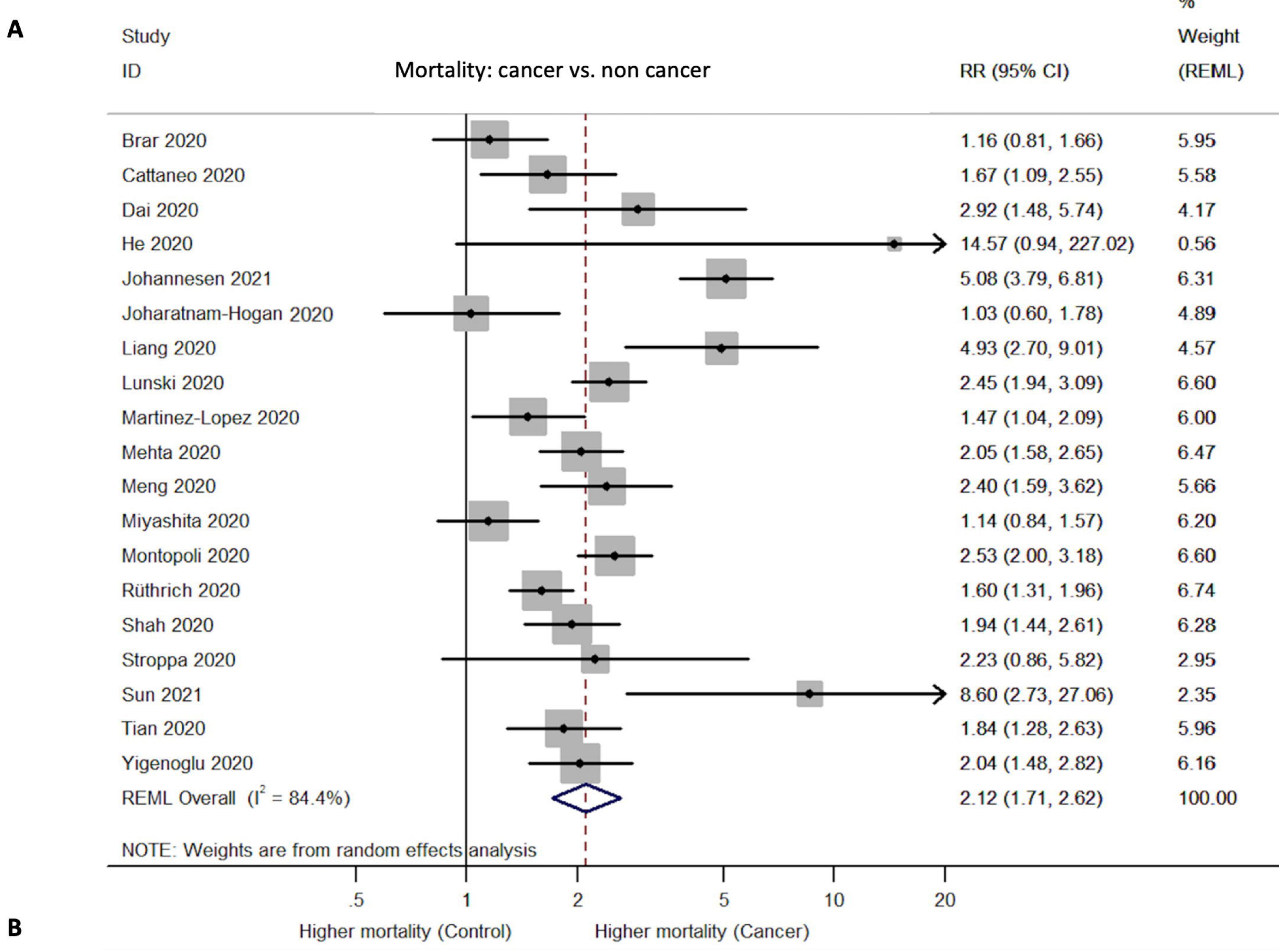
Publication	Comparison	Cancer patients	Mortality	Non-cancer patients	Mortality	Features
Yigenoglu et al, 2020 *	Non-cancer COVID-19 patients (age, gender and comorbidity matched)	740	102	740	50	Patient characteristics and outcomes
Johannesen et al, 2021	Non-cancer COVID-19 patients	547	56	7,841	158	Patient characteristics and outcomes
Rüthrich et al, 2020	Non-cancer COVID-19 patients (age matched)	435	97	2,636	367	Patient characteristics and outcomes
Montopoli et al, 2020	Non-cancer COVID-19 patients	430	75	4,532	313	Patient characteristics and outcomes
Miyashita et al, 2020	Non-cancer COVID-19 patients (age matched)	334	37	5,354	518	Patient outcomes
Lunski et al, 2020	Non-cancer COVID-19 control cohort (Ochsner Health System)	157	56	1,460	372	Patient characteristics laboratory markers, and outcomes
Tian et al, 2020	Non-cancer COVID-19 patients (1:2 Propensity score matched)	232	46	519	56	Patient characteristics laboratory markers, and outcomes
Mehta V et al, 2020	Non-cancer COVID-19 patients, 1:5 Propensity matched (age and gender matched)	218	61	1,090	149	Patient characteristics and outcomes
Martinez-Lopez et al, 2020 *	Non-cancer COVID-19 patients (age and gender matched)	167	56	167	38	Patient characteristics laboratory markers, and outcomes
Brar et al, 2020	Non-cancer COVID-19 patients, 1:4 (age, gender, comorbidities matched)	117	29	468	100	Patient characteristics and outcomes
Meng et al, 2020	Non-cancer COVID-19 patients (1:3 Propensity score matched)	109	32	327	40	Patient characteristics laboratory markers, and outcomes
Dai et al, 2020	Non-cancer COVID-19 patients (age matched)	105	12	536	21	Patient characteristics and outcomes
Cattaneo et al, 2020 *	Non-cancer COVID-19 patients (matched by age, gender, comorbidities and respiratory failure)	102	40	102	24	Patient characteristics and outcomes
Shah et al, 2020 *	Non-cancer COVID-19 patients (age and gender matched)	80	31	1,115	223	Patient characteristics and outcomes
Sun et al, 2021	Non-cancer COVID-19 patients	67	9	356	4	Patient characteristics and outcomes
Joharatnam-Hogan et al, 2020	Non-cancer COVID-19 patients (matched by age, gender, comorbidities)	30	11	90	32	Patient characteristics laboratory markers, and outcomes
Stroppa et al, 2020	Non-cancer COVID-19 patients (matched by age, gender, pneumonia and antiviral treatment)	25	9	31	5	Patient characteristics and outcomes
Liang et al, 2020	Non-cancer COVID-19 patients	18	7	1,572	124	Patient characteristics and outcomes
He et al, 2020 *	Non-cancer COVID-19 health care providers	13	8	11	0	Patient characteristics laboratory markers, and outcomes

**Table 1** Comparison of malignant versus non-malignant patients with outcomes in 19 studies.

\* Denotes studies looking at patients with haematological malignancies.

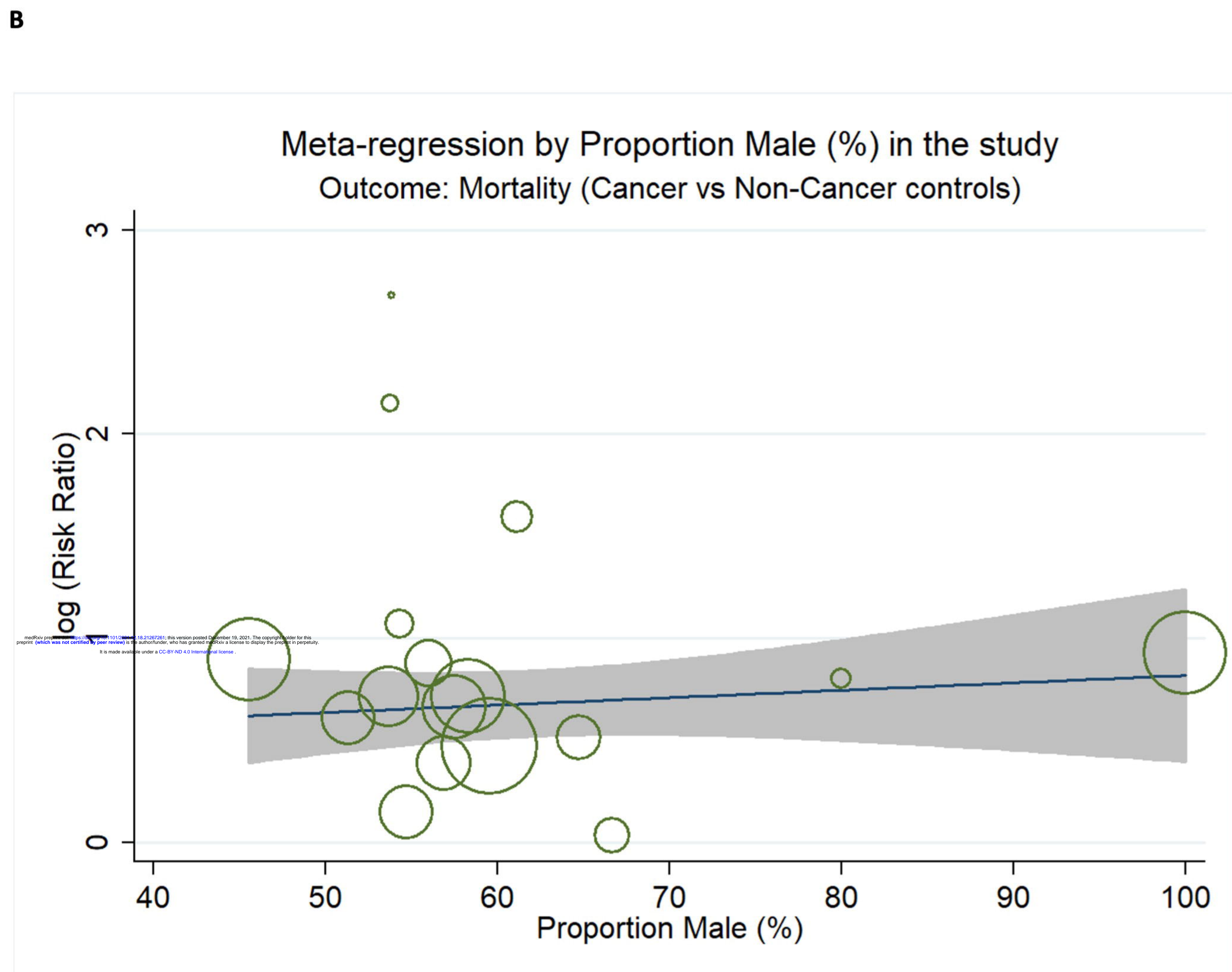
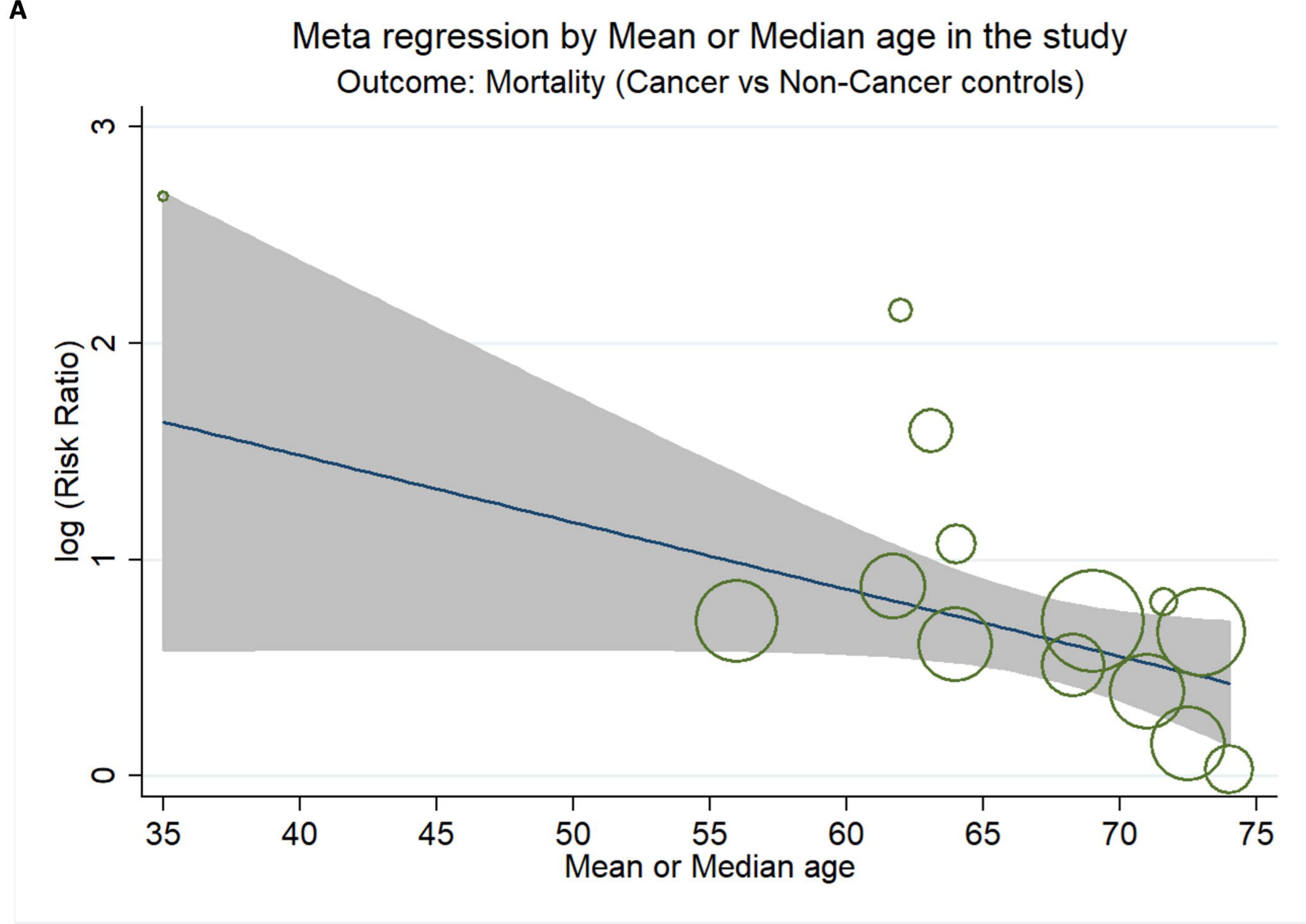


**Figure 1** Distribution of patients across 80 studies.



**Figure 3** Forest plot of relative risk of mortality in analysis.

A) Unadjusted mortality risk due to presence of malignant disease. B) Relative risk of mortality due to the presence of malignant disease, after matching for age and gender.



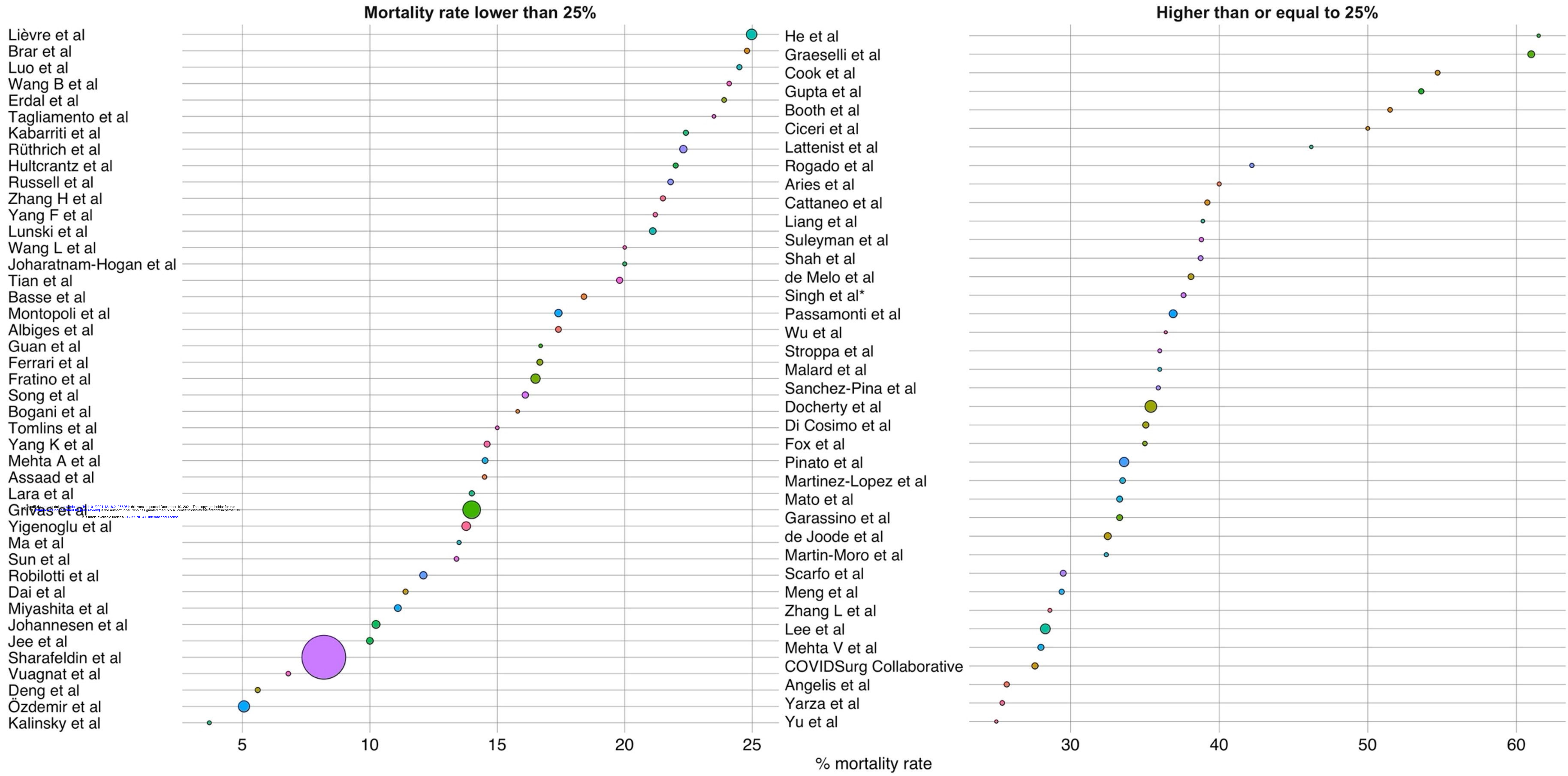
**Figure 3** Meta-regression bubble plot results of impact of age and gender.  
(A) Risk ratio of mean or median age in cancer vs non cancer subgroups. (B) Risk ratio of male



Median mortality rate = 24.5% across the studies

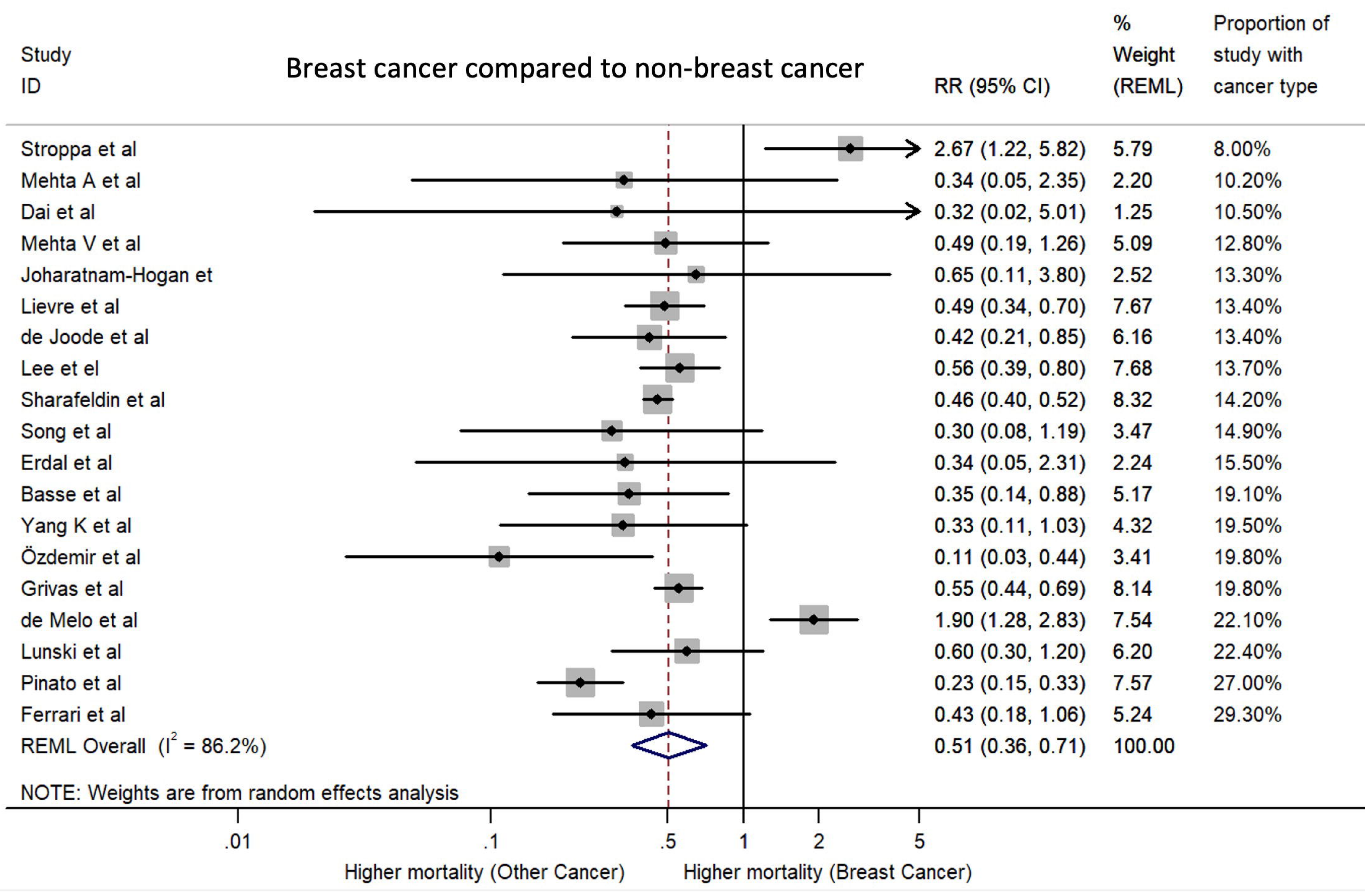
Larger bubble = more patients in the study

○ 10000 ○ 20000 ○ 30000

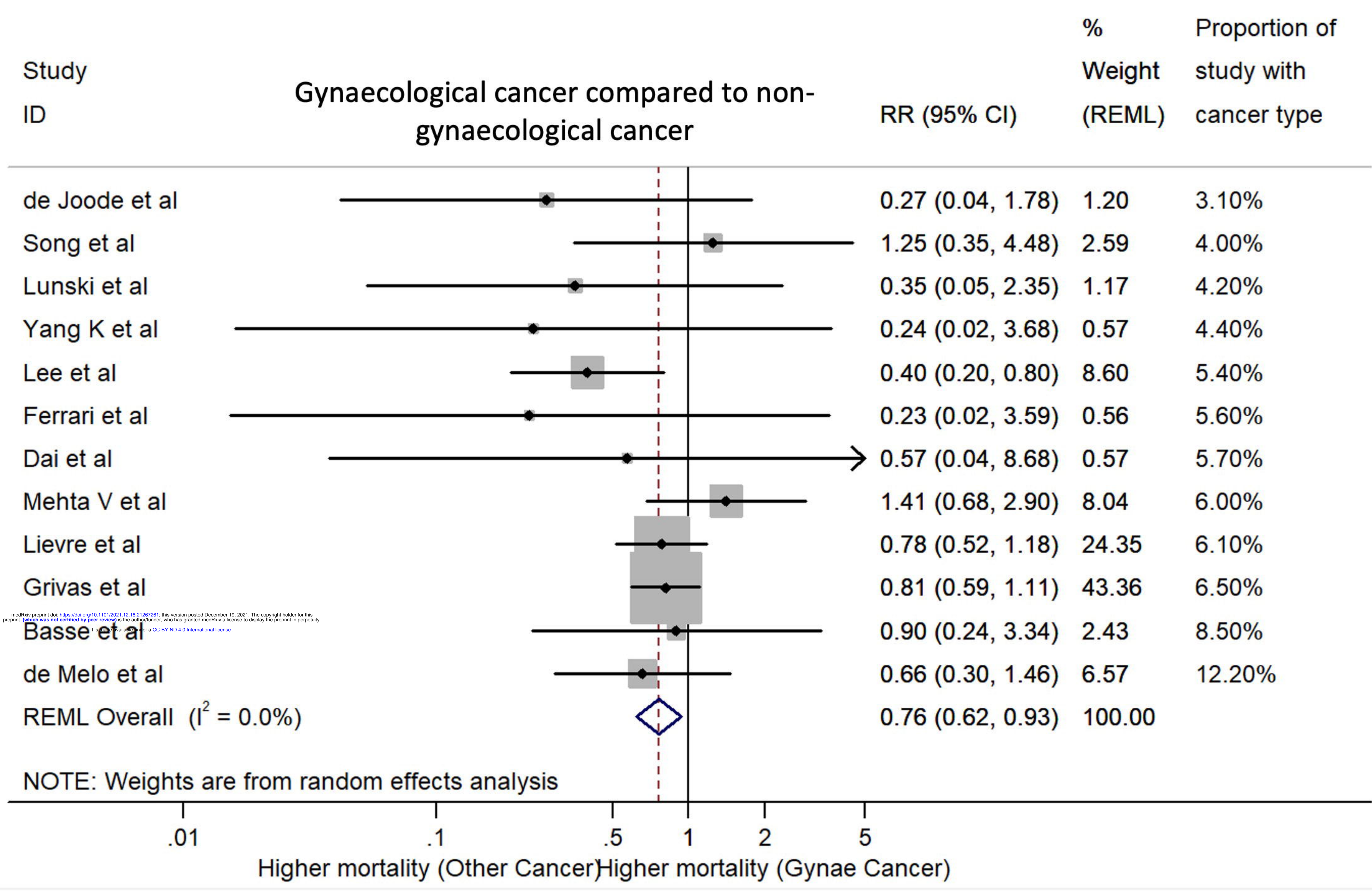


**Figure 4** Mortality reported across 81 studies.

**A**

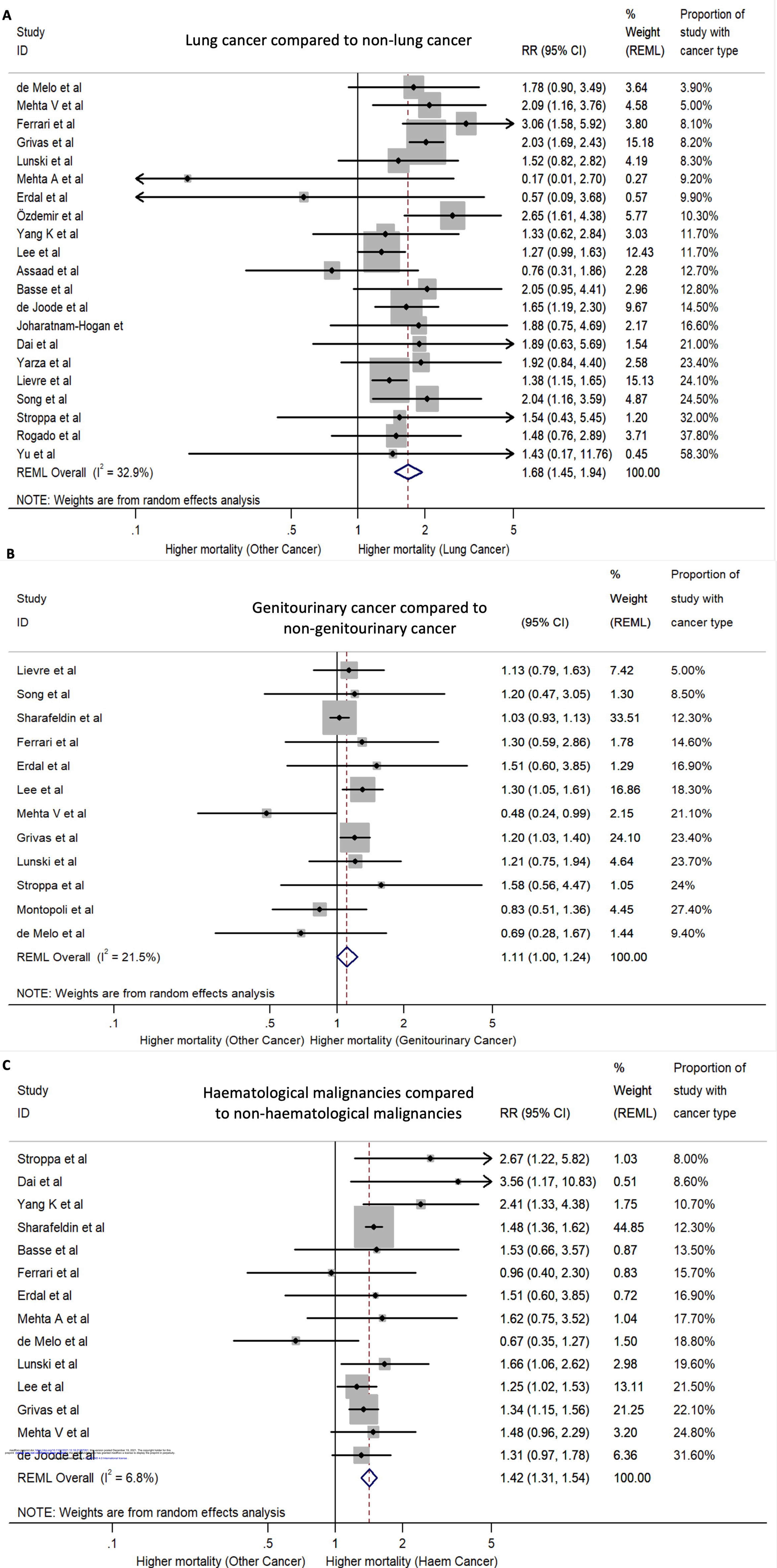


**B**



**Figure 5** Forest plot of relative risk of mortality in the subgroup analysis.

A) Breast cancer and COVID-19, compared to patients with non-breast cancers and COVID-19. B) Gynaecological cancer and COVID-19, compared to patients with non-gynaecological cancers and COVID-19.



**Figure 6** Forest plot of relative risk of mortality in subgroup analysis.

Relative risk of mortality in different cancer types: A) Patients with lung cancer and COVID-19 compared to patients with non-lung cancers and COVID-19. B) Patients with genitourinary cancer and COVID-19 compared to patients with non-genitourinary cancers and COVID-19. C) Patients with haematological malignancies and COVID-19 compared to patients with non-haematological malignancies and COVID-19.