

Supplementary Table 1: Average percentage of 0–4-year-olds with at least one hospital contact per year (2015-19), by risk factors.

		n (%)	2015-19 averages (%)					
			Outpatient attendances	p-value	Planned admissions	p-value	Unplanned admissions	p-value
Clinical vulnerability	No known vulnerability	2,333,773 (72.2)	14.1	Ref	1.74	Ref	8.8	Ref
	Any vulnerability	644,933 (20.0)	31.2	<0.001	10.3	<0.001	18.4	<0.001
	• LBW/Preterm only	238,559 (7.4)	17.8	<0.001	1.65	0.012	8.4	<0.001
	• CC only	329,072 (10.2)	39.1	<0.001	16.0	<0.001	25.3	<0.001
	• Both	77,302 (2.4)	38.8	<0.001	12.3	<0.001	20.0	<0.001
	Any CC ^α	406,374 (12.6)	38.9	<0.001	15.3	<0.001	24.3	<0.001
Age group	Infants (<1 year old)	628,900 (19.5)	60.1	<0.001	4.2	<0.001	26.4	<0.001
	1–4-year-olds	2,601,649 (80.5)	8.2	Ref	3.5	Ref	8.0	Ref
Ethnic group	White	2,296,986 (71.1)	17.7	Ref	3.7	Ref	12.0	Ref
	Black	153,009 (4.7)	15.8	<0.001	3.8	0.018	9.2	<0.001
	Asian	345,843 (10.7)	18.0	<0.001	3.6	0.007	11.6	<0.001
	Other	257,651 (8.0)	19.1	<0.001	3.6	0.006	10.7	<0.001
Deprivation quintile	Q1 (most deprived)	755,351 (23.4)	19.5	<0.001	4.4	0.304	14.0	<0.001
	Q2	607,815 (18.8)	19.6	<0.001	4.2	0.003	13.3	<0.001
	Q3	502,672 (15.6)	20.2	<0.001	4.2	<0.001	13.5	0.071
	Q4	430,486 (13.3)	21.2	<0.001	4.3	0.086	13.8	0.12
	Q5 (least deprived)	404,753 (12.5)	22.5	Ref	4.3	Ref	13.6	Ref

LBW – Low birthweight; **CC** – Chronic conditions. * N = 3,230,549 (Average eligible population between 2015-2019). Ref – Reference group. P-values: Chi-square test for comparison with reference group. ^α Children with any chronic condition (combines CC only and Both).

Supplementary Table 2: Difference in predicted and observed rates of hospital contact during the pandemic (March 2020-2021) among children aged 0 to 4 years, by age.

	Percentage of children seen			Number of hospital contacts				Rates per 1000 child-years			
	n	N	%	Predicted	Observed	Difference	% change	Predicted	Observed	Difference (95% CI)	% change
Outpatient attendances											
Total	426,871	3,034,197	14.1	1,687,100	1,282,399	-404,701	-24.0	556	423	-133 (-131, -136)	-24.0
Infants (<1 year old)	313,236	568,812	55.1	900993	815513	-85,480	-9.5	1584	1434	-150* (-143, -157)	-9.5
1–4-year-olds	113,635	2,465,385	4.6	786107	466886	-319,221	-40.6	319	189	-129 (-128, -131)	-40.6
Planned admissions											
Total	63,439	3,034,197	2.1	166,954	104,464	-62,490	-37.4	55	34	-21 (-20, -21)	-37.4
Infants (<1 year old)	19,597	568,812	3.4	35045	28108	-6,937	-19.8	62	49	-12* (-11, -14)	-19.8
1–4-year-olds	43,842	2,465,385	1.8	131909	76356	-55,553	-42.1	54	31	-23 (-22, -23)	-42.1
Unplanned admissions											
Total	208,377	3,034,197	6.9	519,640	268,220	-251,420	-48.4	171	88	-83 (-81, -84)	-48.4
Infants (<1 year old)	106,048	568,812	18.6	226396	137884	-88,512	-39.1	398	242	-156* (-152, -159)	-39.1
1–4-year-olds	102,329	2,465,385	4.2	293244	130336	-162,908	-55.6	119	53	-66 (-65, -67)	-55.6

* Significantly different from 1–4-year-olds (5% level of significance).

Supplementary Table 3: Difference in predicted and observed rates of hospital contact during the pandemic (March 2020-2021) among children aged 0 to 4 years, by ethnic group.

	Percentage of children seen			Number of hospital contacts				Rates per 1000 child-years			
	n	N	%	Predicted	Observed	Difference	% change	Predicted	Observed	Difference (95% CI)	% change
Outpatient attendances											
Total	380,925	2,872,476	13.3	1,589,161	1,203,043	-386,118	-24.3	553	419	-134 (-131, -138)	-24.3
White	277,757	2,125,238	13.1	1177279	889991	-287,288	-24.4	554	419	-135 (-133, -137)	-24.4
Black	17,582	140,621	12.5	70897	52346	-18,551	-26.2	504	372	-132 (-124, -140)	-26.2
Asian	48,025	338,198	14.2	195379	150173	-45,206	-23.1	578	444	-134 (-128, -139)	-23.1
Other	37,561	268,419	14.0	145606	110533	-35,073	-24.1	542	412	-131 (-125, -137)	-24.1
Planned admissions											
Total	60,815	2,872,476	2.1	161,107	102,311	-58,796	-36.5	56	36	-20 (-19, -22)	-36.5
White	45,439	2,125,238	2.1	116675	75721	-40,954	-35.1	55	36	-19 (-19, -20)	-35.1
Black	3,053	140,621	2.2	8443	4798	-3,645	-43.2	60	34	-26* (-23, -29)	-43.2
Asian	6,790	338,198	2.0	20335	12319	-8,016	-39.4	60	36	-24* (-22, -26)	-39.4
Other	5,533	268,419	2.1	15654	9473	-6,181	-39.5	58	35	-23* (-21, -25)	-39.5
Unplanned admissions											
Total	199,183	2,872,476	6.9	498,620	260,250	-238,370	-47.8	174	91	-83 (-81, -85)	-47.8
White	152,225	2,125,238	7.2	378452	199614	-178,838	-47.3	178	94	-84 (-83, -85)	-47.3
Black	7,566	140,621	5.4	18489	9442	-9,047	-48.9	131	67	-64* (-60, -69)	-48.9
Asian	22,516	338,198	6.7	61164	29575	-31,589	-51.6	181	87	-93* (-90, -97)	-51.6
Other	16,876	268,419	6.3	40515	21619	-18,896	-46.6	151	81	-70* (-67, -74)	-46.6

* Significantly different from children in the white ethnic group (5% level of significance). Other ethnic group includes Chinese and mixed ethnicity.

Supplementary Table 4: Difference in predicted and observed rates of hospital contact during the pandemic (March 2020-2021) among children aged 0 to 4 years, by deprivation quintile.

	Percentage of children seen			Number of hospital contacts				Rates per 1000 child-years			
	n	N	%	Predicted	Observed	Difference	% change	Predicted	Observed	Difference (95% CI)	% change
Outpatient attendances											
Total	389,098	2,733,692	14.2	1,433,837	1,213,380	-220,457	-15.4	525	444	-81 (-78, -86)	-15.4
Q1	103,866	750,360	13.8	405740	331783	-73,957	-18.2	541	442	-99* (-95, -102)	-18.2
Q2	84,205	604,305	13.9	304926	257812	-47,114	-15.5	505	427	-78 (-74, -82)	-15.5
Q3	72,458	512,075	14.1	260352	226099	-34,253	-13.2	508	442	-67* (-63, -71)	-13.2
Q4	65,403	447,272	14.6	234302	202578	-31,724	-13.5	524	453	-71 (-67, -75)	-13.5
Q5 (least deprived)	63,166	419,680	15.1	228517	195108	-33,409	-14.6	545	465	-80 (-75, -84)	-14.6
Planned admissions											
Total	62,744	2,733,692	2.3	146,454	104,255	-42,199	-28.8	54	38	-16 (-14, -17)	-28.8
Q1	17,518	750,360	2.3	42046	28414	-13,632	-32.4	56	38	-18* (-17, -19)	-32.4
Q2	13,703	604,305	2.3	32566	22934	-9,632	-29.6	54	38	-16* (-15, -17)	-29.6
Q3	11,625	512,075	2.3	26400	19069	-7,331	-27.8	52	37	-14 (-13, -16)	-27.8
Q4	10,163	447,272	2.3	23504	17253	-6,251	-26.6	53	39	-14 (-13, -15)	-26.6
Q5 (least deprived)	9,735	419,680	2.3	21938	16585	-5,353	-24.4	52	40	-13 (-11, -14)	-24.4
Unplanned admissions											
Total	206,549	2,733,692	7.6	459,218	267,418	-191,800	-41.8	168	98	-70 (-68, -73)	-41.8
Q1	57,328	750,360	7.6	133406	74919	-58,487	-43.8	178	100	-78* (-76, -80)	-43.8
Q2	44,184	604,305	7.3	98003	57071	-40,932	-41.8	162	94	-68 (-66, -70)	-41.8
Q3	38,374	512,075	7.5	84028	49672	-34,356	-40.9	164	97	-67 (-65, -69)	-40.9
Q4	34,434	447,272	7.7	74938	44550	-30,388	-40.6	168	100	-68 (-65, -71)	-40.6
Q5 (least deprived)	32,229	419,680	7.7	68843	41206	-27,637	-40.1	164	98	-66 (-63, -68)	-40.1

* Significantly different from children in the least deprived quintile (5% level of significance).

Supplementary Table 5: Difference in predicted and observed rates of hospital contact per 1,000 child-years among children aged 0 to 4 years during the pandemic (March 2020-2021), by period and age.

	March 23 to June 23, 2020		June 24 to Nov 4, 2020		Nov 5 to Dec 31, 2020		Jan 1 to March 22, 2021	
	Deficit (95% CI)	% change	Deficit (95% CI)	% change	Deficit (95% CI)	% change	Deficit (95% CI)	% change
Outpatient attendances								
Total	-170 (-167, -172)	-30.7	-90 (-88, -92)	-16.6	-101 (-98, -104)	-18.8	-184 (-181, -188)	-30.7
Infants (<1 year old)	-310* (-304, -317)	-20.2	-37* (-32, -43)	-2.4	-70* (-62, -79)	-4.5	-207* (-198, -217)	-12.3
1–4-year-olds	-137 (-136, -139)	-43.9	-102 (-101, -103)	-32.9	-108 (-106, -110)	-36.0	-179 (-177, -181)	-51.3
Planned admissions								
Total	-33 (-32, -33)	-60.1	-16 (-15, -17)	-29.1	-9 (-8, -10)	-17.6	-22 (-21, -23)	-38.2
Infants (<1 year old)	-25* (-23, -26)	-40.8	-8* (-7, -9)	-13.1	-2* (0, -4)	-3.3	-12* (-10, -14)	-18.3
1–4-year-olds	-35 (-34, -35)	-65.2	-18 (-17, -18)	-33.4	-10 (-10, -11)	-21.6	-24 (-24, -25)	-43.4
Unplanned admissions								
Total	-82 (-81, -83)	-53.2	-60 (-59, -61)	-38.2	-124 (-122, -126)	-55.5	-92 (-91, -94)	-52.1
Infants (<1 year old)	-150* (-147, -153)	-41.4	-103* (-100, -106)	-28.6	-288* (-283, -293)	-53.4	-154* (-149, -159)	-38.7
1–4-year-olds	-66 (-65, -67)	-62.6	-50 (-49, -50)	-45.4	-86 (-85, -87)	-57.2	-78 (-77, -80)	-61.8

* Significantly different from 1–4-year-olds (5% level of significance).

Supplementary Table 6: Difference in predicted and observed rates of hospital contact per 1,000 child-years among children aged 0 to 4 years during the pandemic (March 2020-2021), by period and ethnic group.

	March 23 to June 23, 2020		June 24 to Nov 4, 2020		Nov 5 to Dec 31, 2020		Jan 1 to March 22, 2021	
	Deficit (95% CI)	% change	Deficit (95% CI)	% change	Deficit (95% CI)	% change	Deficit (95% CI)	% change
Outpatient attendances								
Total	-178 (-175, -181)	-34.1	-99 (-97, -102)	-18.1	-111 (-107, -115)	-20.5	-157 (-153, -161)	-27.7
White	-179 (-177, -181)	-32.3	-99 (-97, -101)	-18.0	-118 (-116, -121)	-21.7	-155 (-153, -158)	-27.6
Black	-178 (-170, -185)	-36.1	-101 (-94, -107)	-20.1	-67* (-58, -76)	-14.1	-175* (-164, -186)	-32.5
Asian	-179 (-174, -185)	-31.5	-103 (-98, -107)	-17.9	-87* (-80, -93)	-15.8	-163 (-156, -171)	-26.9
Other	-176 (-170, -181)	-32.8	-98 (-93, -102)	-18.1	-105* (-98, -112)	-19.9	-150 (-142, -158)	-26.8
Planned admissions								
Total	-34 (-33, -35)	-60.1	-17 (-16, -18)	-29.4	-9 (-8, -10)	-17.7	-19 (-17, -20)	-33.5
White	-33 (-32, -33)	-59.2	-16 (-15, -16)	-27.8	-9 (-8, -10)	-17.3	-17 (-16, -18)	-31.4
Black	-37* (-34, -39)	-62.4	-24* (-22, -27)	-38.6	-11 (-8, -15)	-20.7	-26* (-23, -30)	-44.0
Asian	-38* (-36, -39)	-61.7	-20* (-19, -22)	-33.5	-10 (-8, -12)	-17.4	-23* (-21, -25)	-37.8
Other	-39* (-37, -41)	-63.8	-18* (-17, -20)	-30.7	-10 (-8, -12)	-18.9	-22* (-19, -25)	-38.1
Unplanned admissions								
Total	-85 (-83, -87)	-53.6	-62 (-61, -63)	-38.4	-128 (-125, -130)	-55.6	-83 (-81, -85)	-48.9
White	-84 (-83, -85)	-51.5	-63 (-62, -64)	-38.2	-135 (-134, -137)	-56.8	-82 (-81, -84)	-47.6
Black	-74* (-70, -78)	-59.9	-48* (-45, -51)	-37.9	-85* (-80, -91)	-51.9	-65* (-60, -71)	-52.1
Asian	-104* (-101, -107)	-62.8	-67* (-65, -70)	-40.4	-122* (-118, -127)	-52.8	-102* (-98, -107)	-55.9
Other	-77* (-74, -80)	-55.5	-54* (-51, -56)	-37.7	-95* (-90, -99)	-49.5	-72* (-68, -76)	-48.7

* Significantly different from children in the white ethnic group (5% level of significance).

Supplementary Table 7: Difference in predicted and observed rates of hospital contact per 1,000 child-years among children aged 0 to 4 years during the pandemic (March 2020-2021), by period and deprivation quintile.

	March 23 to June 23, 2020		June 24 to Nov 4, 2020		Nov 5 to Dec 31, 2020		Jan 1 to March 22, 2021	
	Deficit (95% CI)	% change	Deficit (95% CI)	% change	Deficit (95% CI)	% change	Deficit (95% CI)	% change
Outpatient attendances								
Total	-134 (-131, -138)	-25.4	-51 (-48, -54)	-9.6	-64 (-60, -69)	-12.4	-80 (-75, -85)	-15.5
Q1	-151* (-148, -155)	-28.0	-75* (-72, -77)	-13.7	-74* (-70, -78)	-13.9	-93 (-89, -98)	-17.6
Q2	-126 (-123, -130)	-25.1	-50 (-47, -53)	-9.9	-64 (-60, -69)	-12.9	-77* (-72, -81)	-15.5
Q3	-126 (-122, -129)	-24.4	-34* (-31, -37)	-6.7	-49* (-44, -54)	-9.7	-65* (-60, -70)	-13.1
Q4	-127 (-123, -131)	-23.8	-35* (-32, -39)	-6.7	-65 (-60, -70)	-12.5	-69* (-64, -74)	-13.6
Q5 (least deprived)	-131 (-127, -136)	-23.9	-45 (-42, -49)	-8.3	-63 (-58, -69)	-11.9	-87 (-82, -93)	-16.3
Planned admissions								
Total	-31 (-30, -32)	-56.0	-12 (-11, -13)	-21.8	-5 (-3, -6)	-9.2	-11 (-10, -13)	-21.8
Q1	-33* (-32, -35)	-58.2	-14* (-13, -15)	-24.8	-7* (-6, -9)	-14.0	-15* (-13, -16)	-26.9
Q2	-31* (-30, -32)	-56.5	-13* (-12, -14)	-22.8	-4 (-2, -5)	-7.6	-12* (-11, -14)	-23.7
Q3	-29 (-27, -30)	-55.1	-12 (-11, -13)	-22.3	-4 (-3, -6)	-8.6	-8 (-7, -10)	-17.7
Q4	-30 (-28, -31)	-55.1	-10 (-9, -11)	-17.8	-3 (-1, -4)	-5.6	-11* (-9, -12)	-21.7
Q5 (least deprived)	-28 (-27, -29)	-53.0	-10 (-9, -11)	-18.2	-3 (-2, -5)	-6.7	-6 (-5, -8)	-13.3
Unplanned admissions								
Total	-76 (-74, -78)	-48.8	-51 (-49, -53)	-32.3	-116 (-113, -119)	-51.3	-62 (-60, -65)	-39.9
Q1	-88* (-86, -90)	-52.7	-56* (-55, -58)	-33.9	-122* (-119, 125)	-51.9	-70* (-68, -73)	-42.0
Q2	-77* (-75, -79)	-50.2	-48 (-46, -49)	-31.7	-110 (-107, -113)	-50.3	-60 (-57, -62)	-40.0
Q3	-71 (-69, -73)	-47.2	-47 (-45, -49)	-30.5	-116 (-112, -119)	-51.9	-61 (-58, -64)	-39.8
Q4	-69 (-67, -71)	-45.2	-51 (-49, -53)	-32.2	-118 (-114, -121)	-51.8	-59 (-56, -62)	-37.9
Q5 (least deprived)	-67 (-65, -69)	-45.0	-51 (-49, -53)	-32.4	-110 (-107, -114)	-50.1	-57 (-54, -60)	-37.9

* Significantly different from children in the least deprived quintile (5% level of significance).



Supplementary table 8: Type of outpatient attendance before and during the pandemic


Outpatient attendance type	Pre-pandemic (Jan 1, 2015- Mar 22, 2020)		During the pandemic (Mar 23, 2020- Mar 31, 2021)	
	n	%	n	%
Attended in-person	12,470,629	96.8	1,730,141	75.2
Attended tele/virtual	411,112	3.2	570,405	24.8
Total	12,261,444	100	2,300,546	100

Supplementary Figure 1: Study population showing ascertainment of vulnerability status (exposure) from birth and hospital contacts (outcomes) from January 1, 2015 to March 31, 2021 for children aged 0 to 4 completed years. *





Year of birth	Outcome year											
	2010	2011	2012	2013	2014	2015	2016	2017	2018	2019	2020	2021
2010	<1	1	2	3	4	5	6	7	8	9	10	11
2011		<1	1	2	3	4	5	6	7	8	9	10
2012			<1	1	2	3	4	5	6	7	8	9
2013				<1	1	2	3	4	5	6	7	8
2014					<1	1	2	3	4	5	6	7
2015						<1	1	2	3	4	5	6
2016							<1	1	2	3	4	5
2017								<1	1	2	3	4
2018									<1	1	2	3
2019										<1	1	2
2020											<1	1
2021												<1

Exposure

 Low birth weight and preterm births
 Chronic conditions

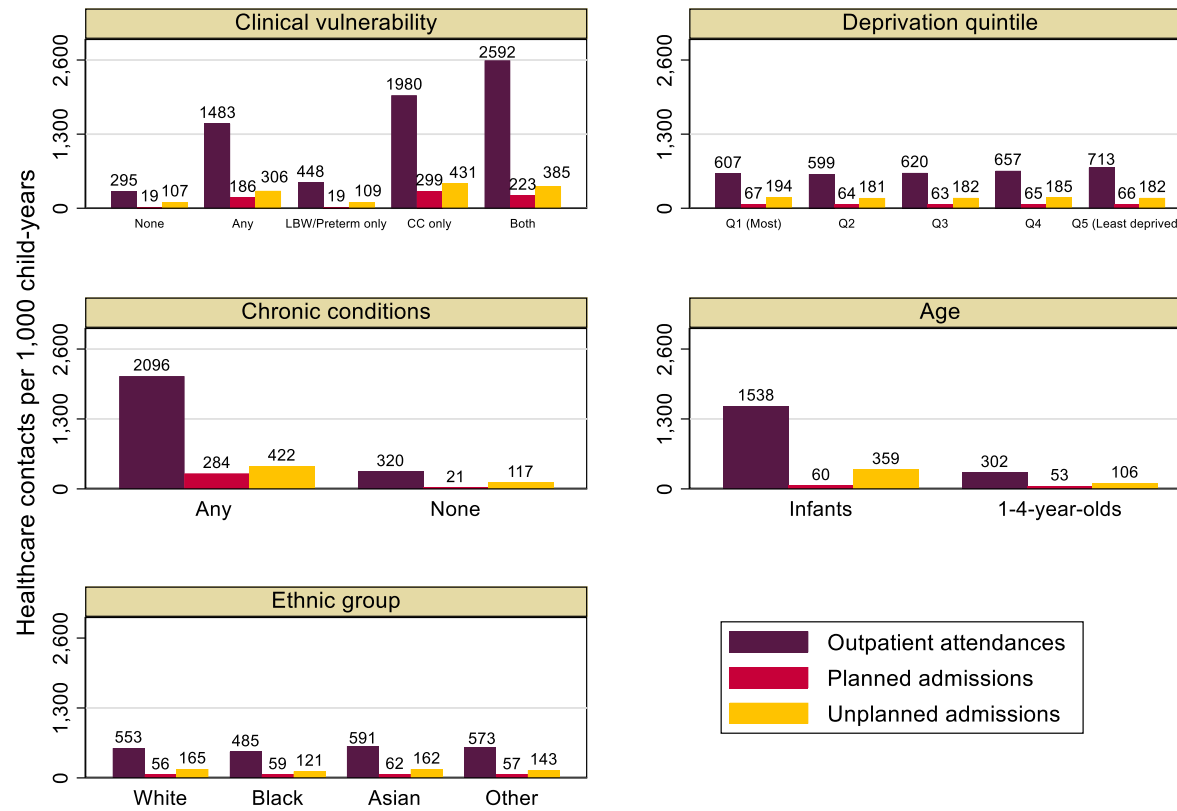
 2 Age

Outcomes

 Not considered
 Partially considered
 Fully considered
 Not yet born

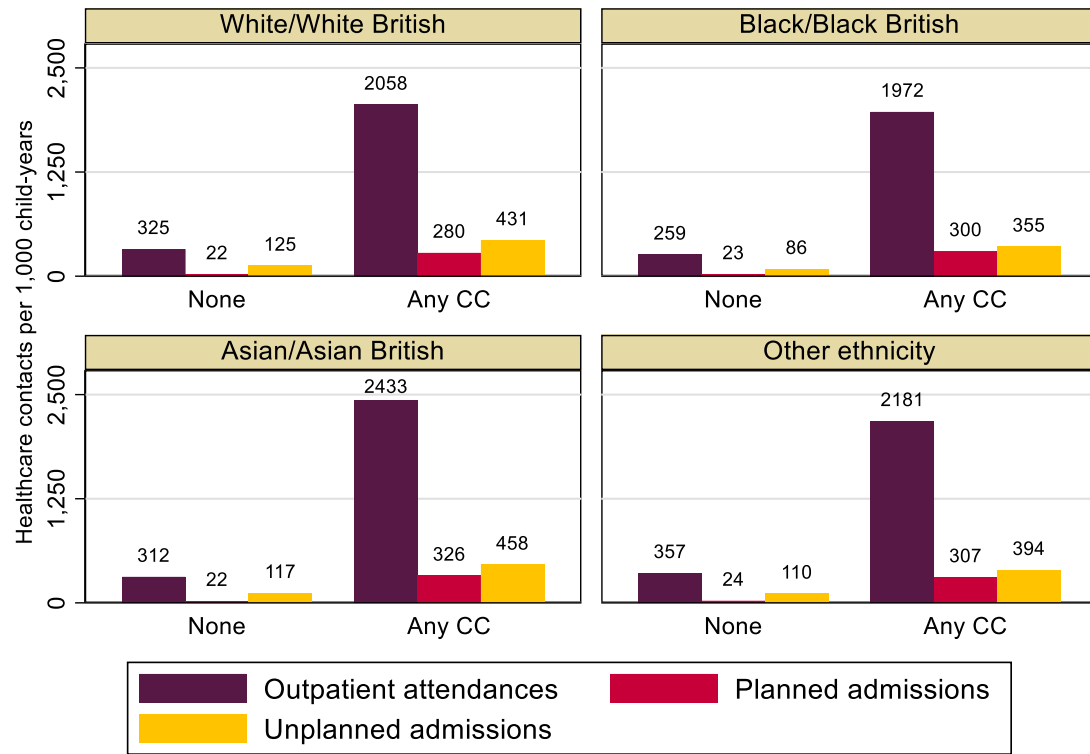
*Partially considered: For example, a child born on 1st June 2010 would turn 5 on 1st June 2015 and would therefore contribute data for part of 2015.

Supplementary Figure 2: Pre-pandemic average rate of hospital contacts per 1,000 child-years among children aged 0 to 4 years (2015 to 2019), by clinical vulnerability status and risk factors.



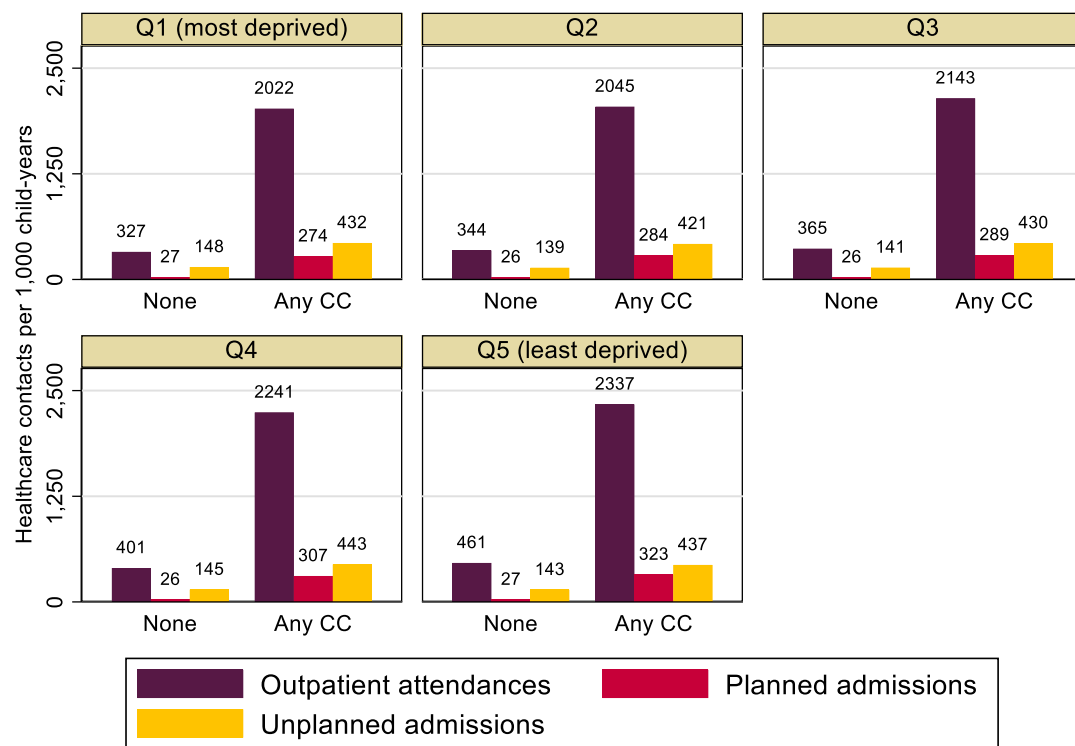
LBW – Low birthweight; **CC** – Chronic conditions

Supplementary Figure 3: Pre-pandemic average rate of hospital contacts per 1,000 child-years among children aged 0 to 4 years (2015 to 2019), by ethnic group and presence of a chronic condition.



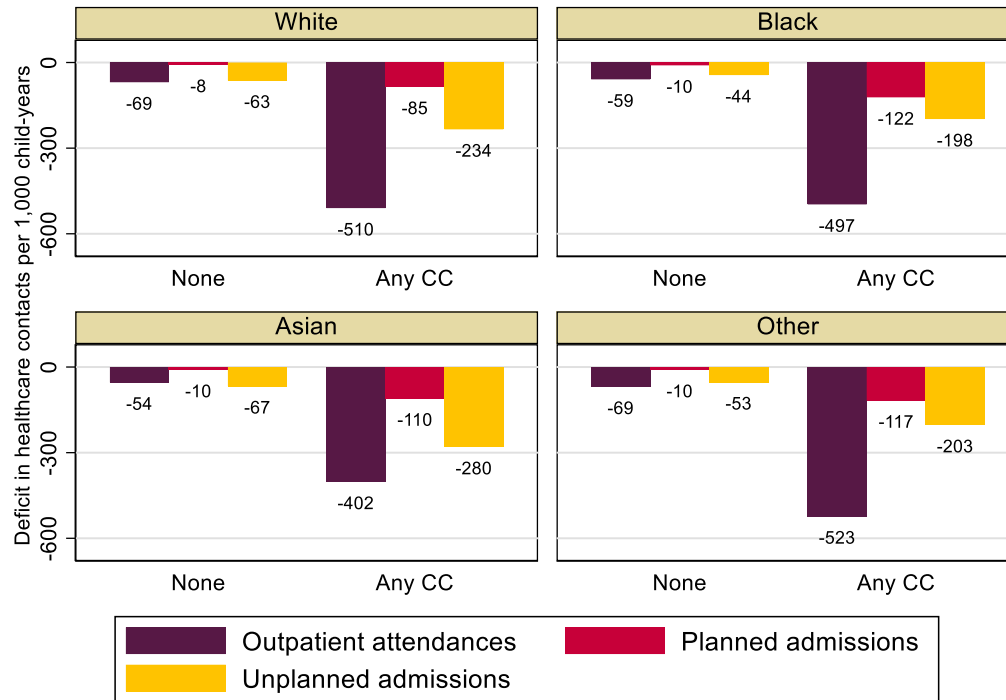
CC – Chronic conditions

Supplementary Figure 4: Pre-pandemic average rate of hospital contacts per 1,000 child-years among children aged 0 to 4 years (2015 to 2019), by deprivation quintile and presence of a chronic condition.



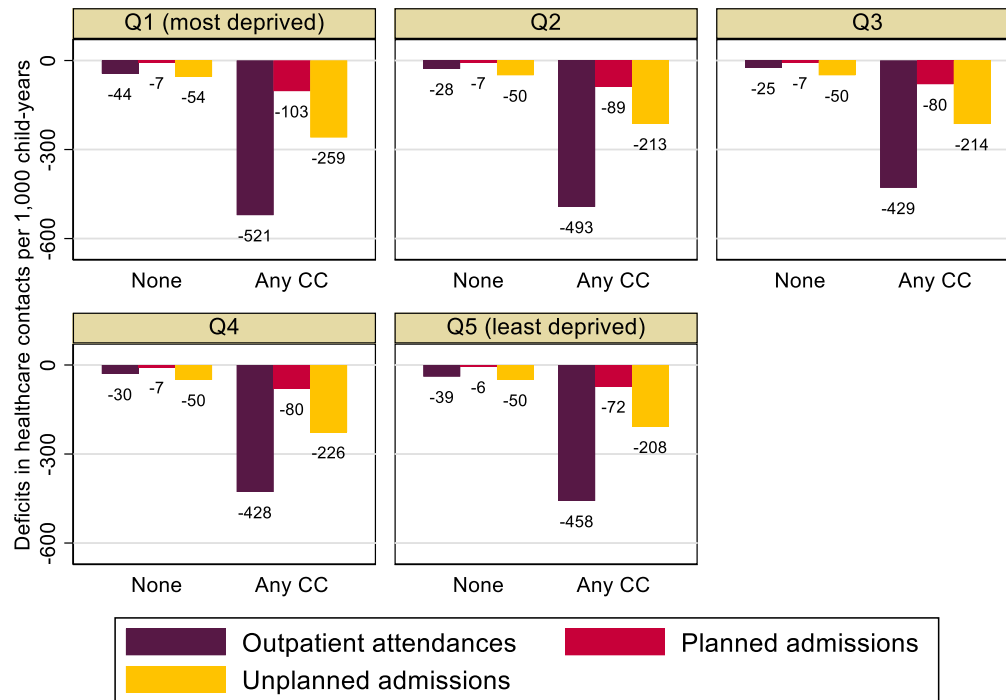
CC – Chronic conditions

Supplementary Figure 5: Deficit in care during the pandemic (March 2020-2021), estimated from predicted minus observed rates of hospital contacts per 1,000 child-years for children aged 0 to 4 years, by ethnic group and presence of a chronic condition.



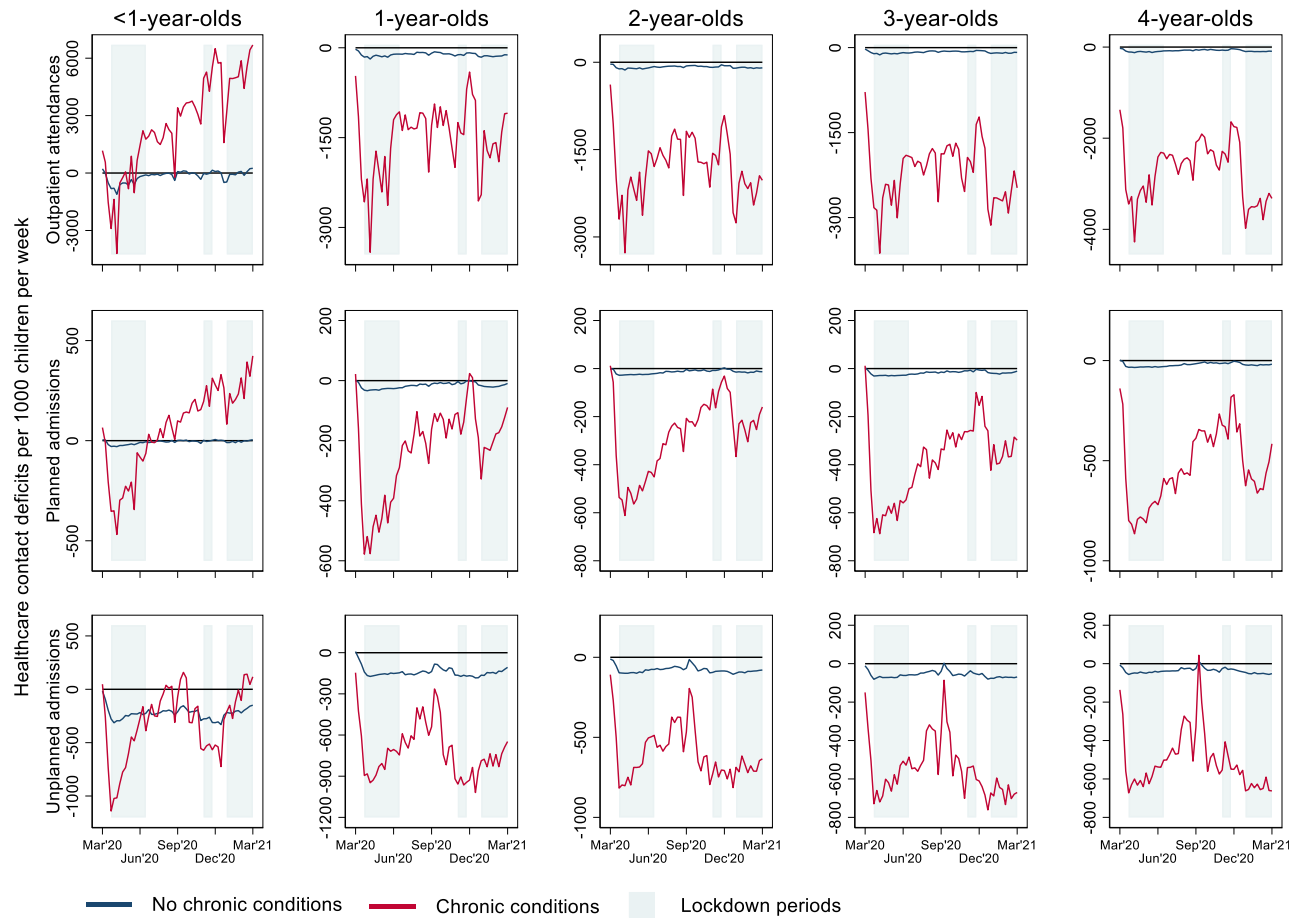
CC – Chronic conditions

Supplementary Figure 6: Deficit in care during the pandemic (March 2020-2021), estimated from predicted minus observed rates of hospital contacts per 1,000 child-years for children aged 0 to 4 years, by deprivation quintile and presence of a chronic condition.

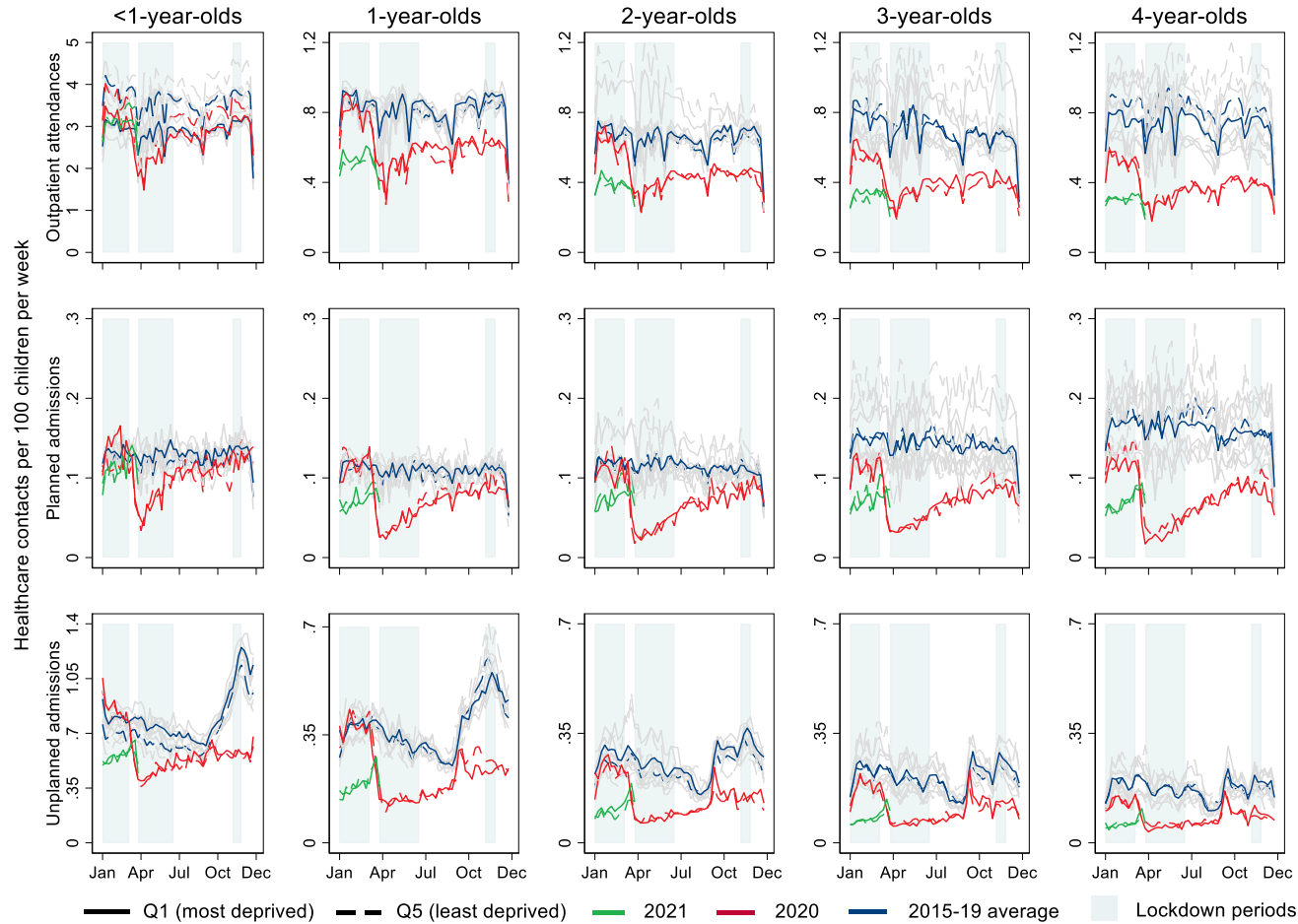


CC – Chronic conditions

Supplementary Figure 7: Weekly difference in observed and predicted hospital contacts among children aged 0 to 4 years during the pandemic (March 2020-2021), by presence of a chronic condition.

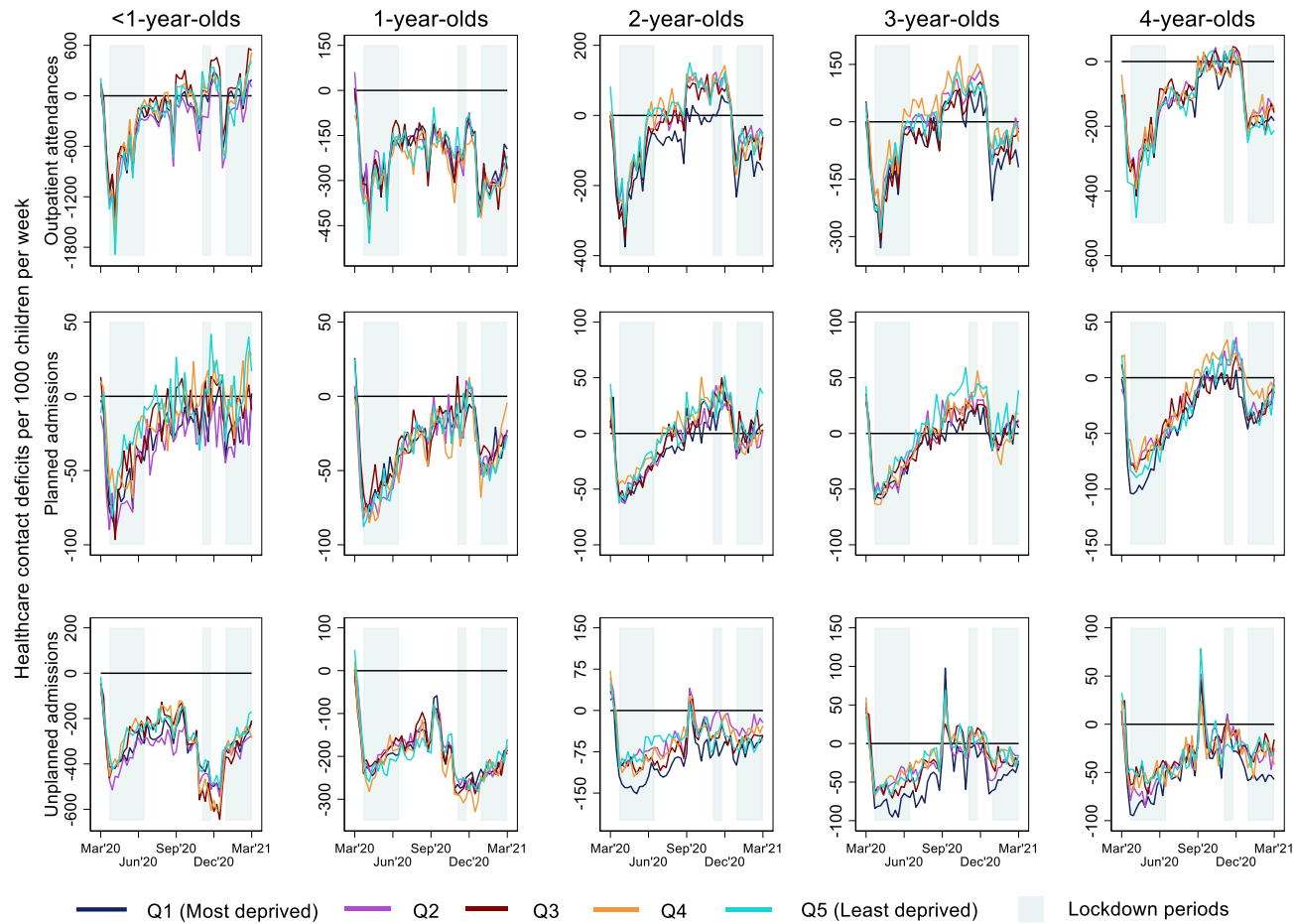


Supplementary Figure 8: Weekly rates of hospital contacts among children aged 0 to 4 years during the pandemic (March 2020-2021) and on average from 2015-2019, by age comparing children in the most and least deprived IMD quintiles.

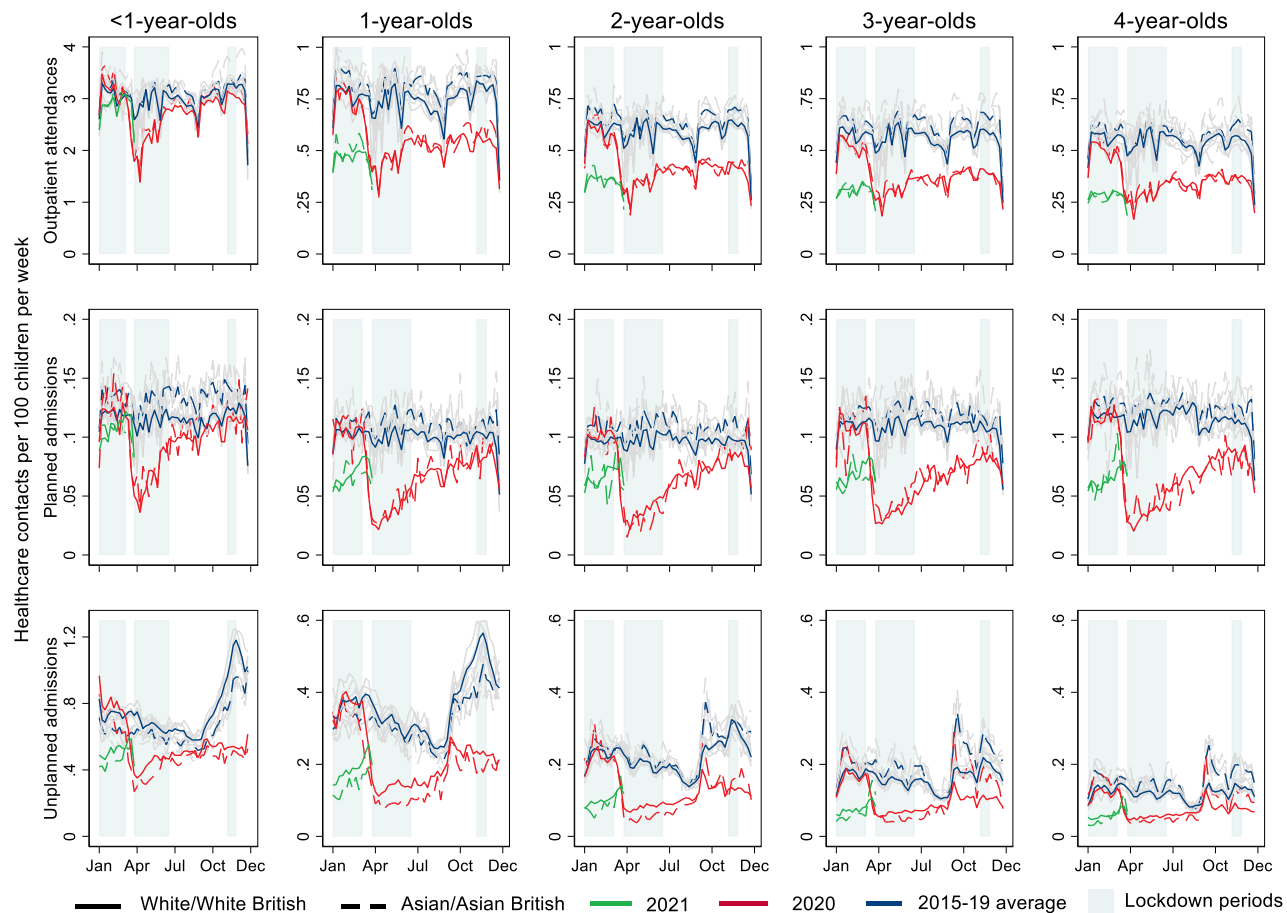


Note: January-March lockdown only affects 2021 data.

Supplementary Figure 9: Weekly difference in observed and predicted hospital contacts among children aged 0 to 4 years during the pandemic (March 2020-2021), by deprivation quintile.

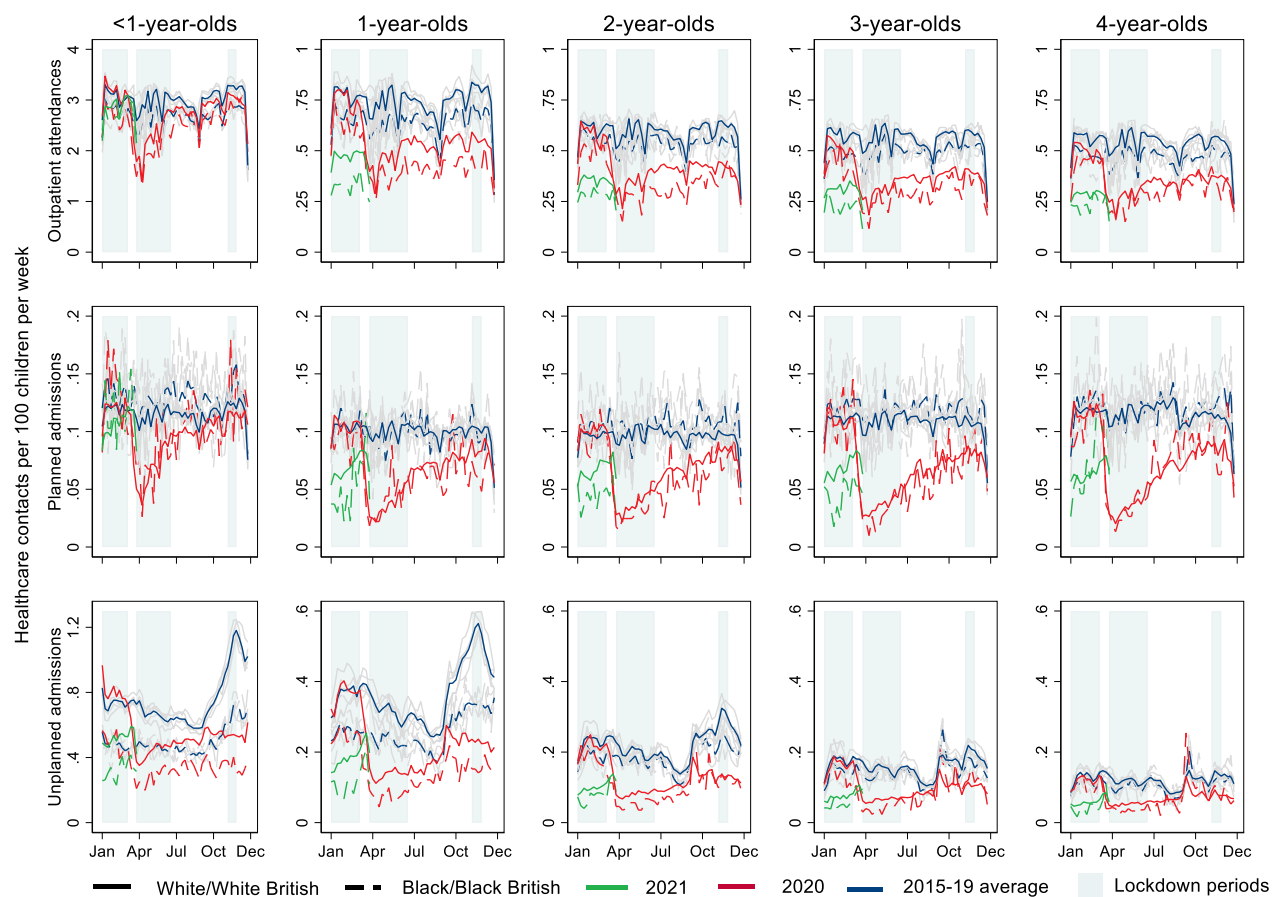


Supplementary Figure 10: Weekly rates of hospital contacts among children aged 0 to 4 years during the pandemic (March 2020-2021) and on average from 2015-2019, by age comparing children of White and Asian ethnic groups.



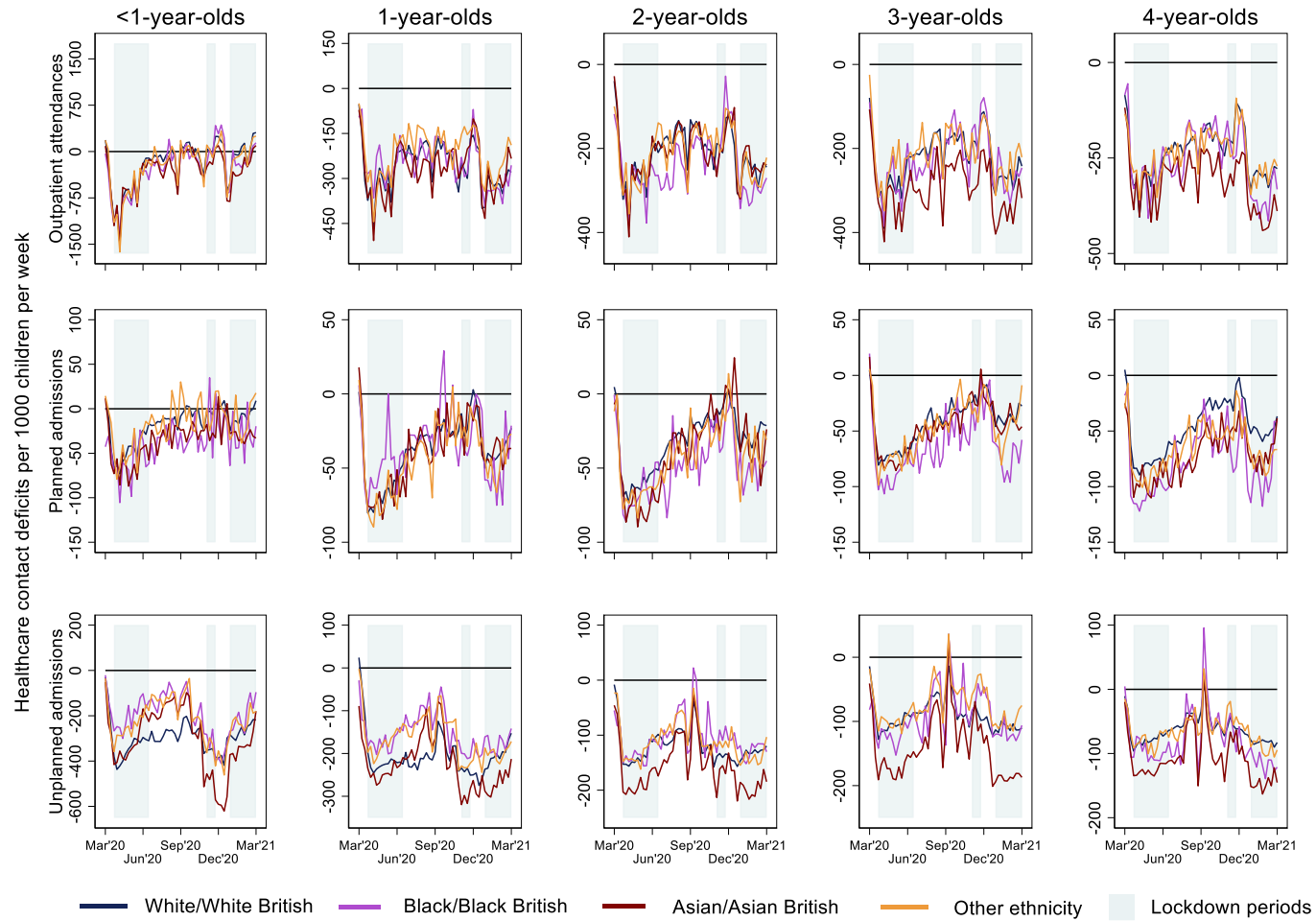
Note: January-March lockdown only affects 2021 data.

Supplementary Figure 11: Weekly rates of hospital contacts among children aged 0 to 4 years during the pandemic (March 2020-2021) and on average from 2015-2019, by age comparing children of White and Black ethnic groups.

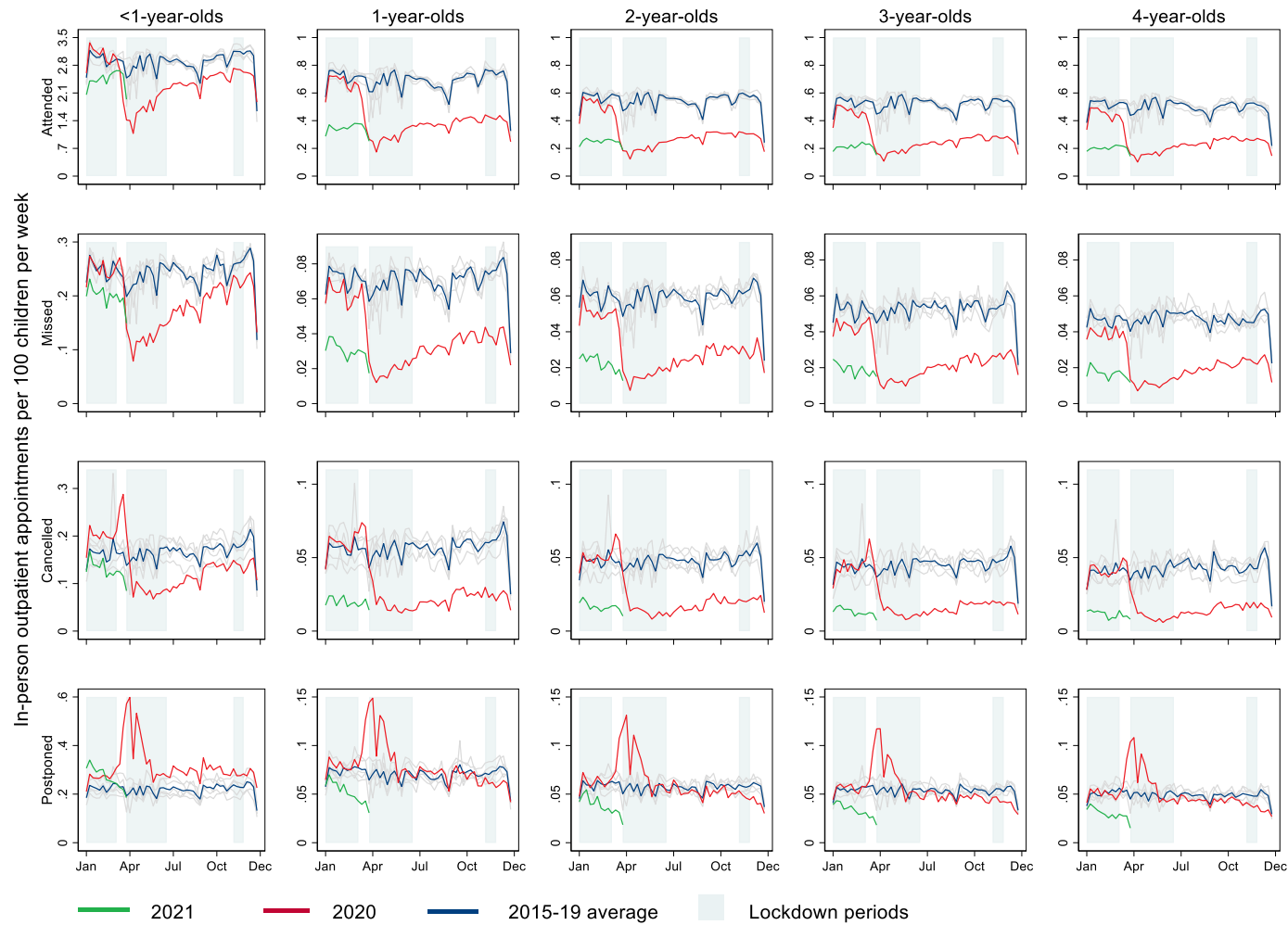


Note: January-March lockdown only affects 2021 data.

Supplementary Figure 12: Weekly difference in observed and predicted hospital contacts among children aged 0 to 4 years during the pandemic (March 2020-2021), by ethnic group.

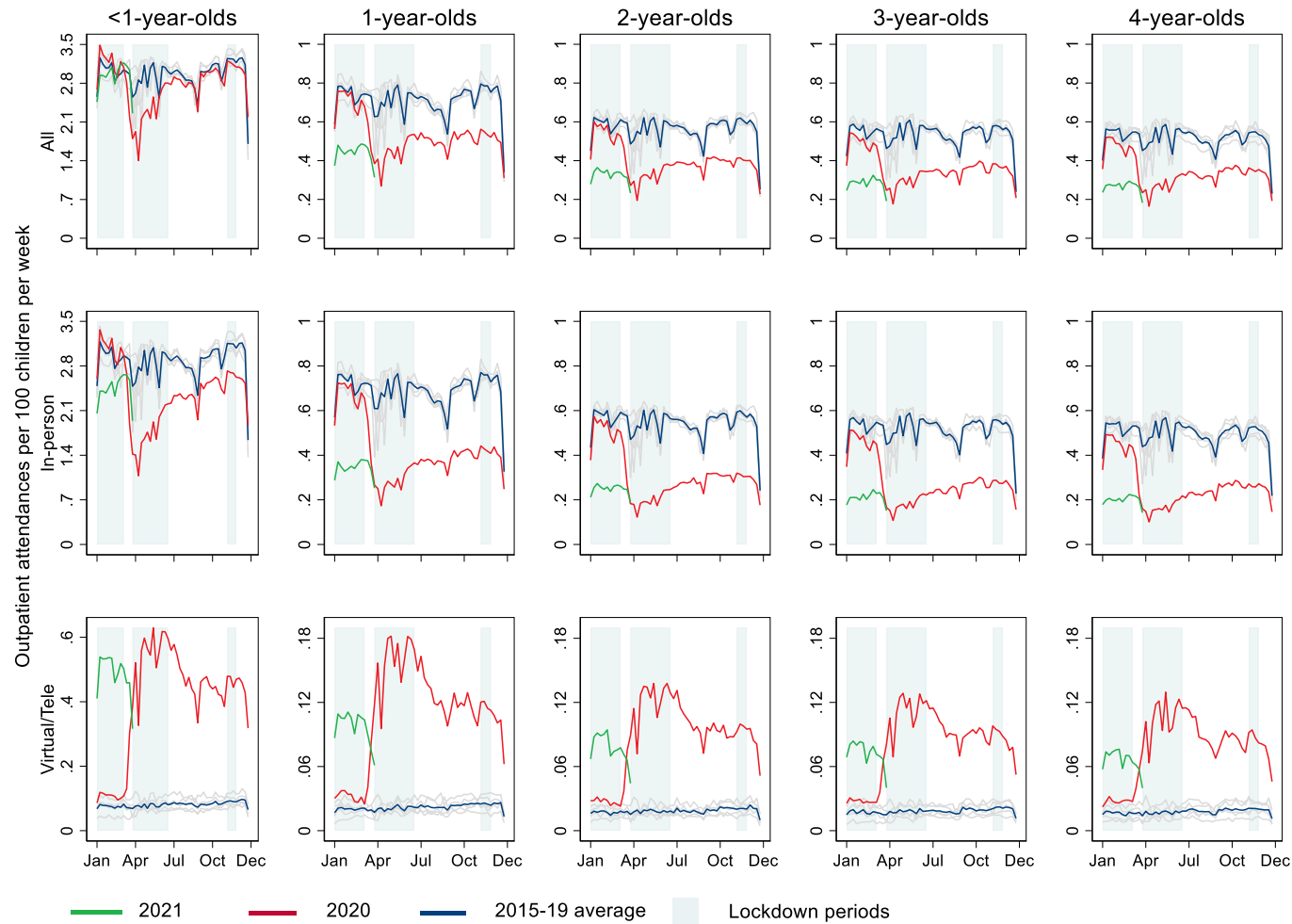


Supplementary Figure 13: Weekly rates of in-person outpatient appointments among children aged 0 to 4 years during the pandemic (March 2020-2021) and on average from 2015-2019, by age.



Note: January-March lockdown only affects 2021 data.

Supplementary Figure 14: Weekly rates of outpatient attendances (In-person vs tele/virtual) among children aged 0 to 4 years during the pandemic (March 2020-2021) and on average from 2015-2019, by age.



Note: January-March lockdown only affects 2021 data.