

Appendices

Table 1A: Experience in care and health system quality outcome questions

Domain	Question	Response options
Promptness	Wait time	Minutes
Communication	How would you rate the provider's availability to explain things in a way that you could understand?	5 point likert *
• <i>clarity</i>		
• <i>Ability to follow advice</i>	How easy or difficult was it for you to follow the provider's advice?	
Providers	What do you think about the care provider's medical knowledge and skills?	5 point likert *
Technical skills		
Trust in provider	How much do you trust the skills and abilities of the health workers at this facility?	5 point likert *
Autonomy/shared decision making	How would you rate your experience of being involved in making decisions for your treatment?)	Poor
Financial Access	Did you have to borrow money or sell anything to pay for this health care (including transportation, fees, medication)	Yes/No
Outcomes		
Trust and confidence in health care system	How confident are you that if you became very sick tomorrow, you would be able to receive effective treatment from the health system?	4 point liverty ***
Met need	Overall, thinking about your entire last visit, please rate how well the care you received met your health needs. That is, how much did the visit help solve your health problem or help you feel better?	5 point likert *
Overall view of the health care system in Burkina Faso	Which of the following statements comes closest to expressing your overall view of the health care system in this country? <ul style="list-style-type: none"> • Our health care system has so much wrong with it that we need to completely rebuild it (coded as poor) • There are some good things in our health care system, but major changes are needed to make it work better (coded as neutral) • On the whole, the system works pretty well and only minor changes are necessary to make it work better (coded as positive) 	Choose one

*Excellent, Very good, good, fair, poor , ** Very much, quite a bit, some, very little, not at all, *** Very confident, somewhat confident, not very confident, not at all confident

Table created by authors

Figure 1A: Consort Diagram

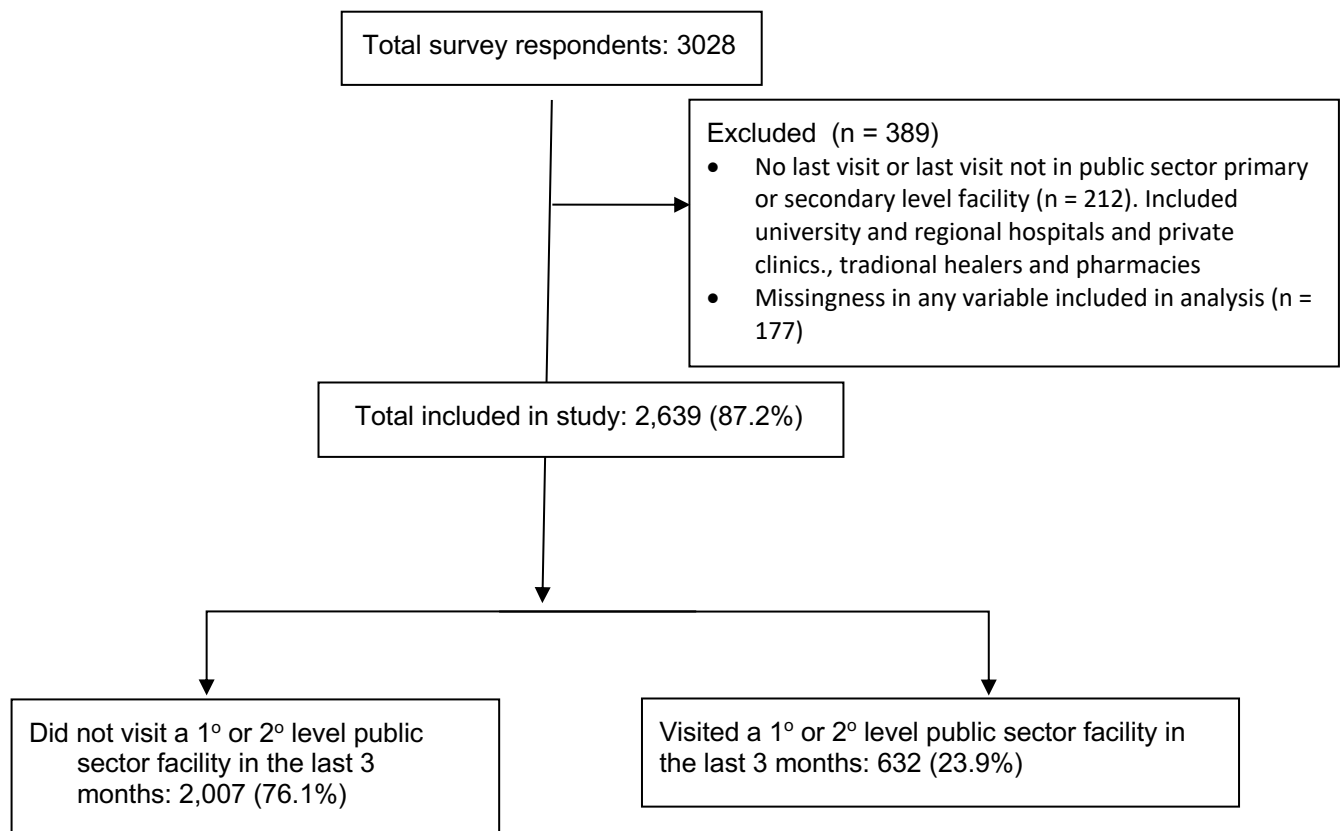


Table 2A: Self reported reasons or last visit among individuals with their last visit at public sector primary or secondary level facility

	Self-reported Reasons for visit	Total	Facility visit in last 3 months	Facility visit > 3 months ago
		N (%)	N (%)	N (%)
Acute	Fever / Malaria	1,361 (51.6)	239 (37.8)	1,122 (55.9)
	Pain in the back, limbs or joints	254 (9.6)	76 (12.0)	178 (8.9)
	Diarrhoea / stomach ache	221 (8.4)	44 (7.0)	177 (8.8)
	Ear, Nose, Throat	182 (6.9)	47 (7.4)	135 (6.7)
	Eye disease	120 (4.5)	40 (6.3)	80 (4.0)
	Accident / Injury	100 (4.5)	24 (3.8)	76 (3.8)
	Skin problem	65 (2.5)	18 (2.8)	47 (2.3)
	Dental problem	49 (1.9)	14 (2.2)	35 (1.7)
	Weakness of arm/legs	25 (0.9)	12 (1.9)	13 (0.6)
	Respiratory illness	17 (0.6)	9 (1.4)	8 (0.4)
	Typhoid fever	16 (0.6)	2 (0.3)	14 (0.7)
	Breathlessness	5 (0.2)	4 (0.6)	1 (0.0)
	Meningitis	4 (0.2)	0 (0)	4 (0.2)
	Acute (all)*	2,087 (79.1)	427 (67.6)	1,660 (82.7)
Chronic	High blood pressure	163 (6.2)	81 (12.8)	82 (4.1)
	Other heart condition	55 (2.1)	26 (4.1)	29 (1.4)
	Diabetes, including symptoms	16 (0.6)	8 (1.3)	8 (0.4)
	Asthma	10 (0.4)	2 (0.3)	8 (0.4)
	Malignant Tumor / Cancer	7 (0.3)	4 (0.6)	3 (0.1)
	Chronic (all)*	249 (9.4)	119 (18.8)	130 (6.5)
Other	Other	254 (9.6)	80 (12.7)	174 (8.7)
	Antenatal care, post-natal care, or delivery	77 (2.9)	12 (1.9)	65 (3.2)
	Family planning	17 (0.6)	4 (0.6)	13 (0.6)
	Peptic ulcer	36 (1.4)	18 (2.8)	18 (0.9)
	Other (all)**	382 (14.5)	114 (18.0)	268 (13.4)

*p<.001. **p=.004

Table created by authors

Table 3A: Most common reasons for no visit in the last 3 months

Most common reasons for no visits (n=232)	N (%)
Was not sick	1,775 (88.4%)
Too expensive	117 (6.0%)
Preferred to see a healer	27 (1.3%)
Unskilled staff/do not think staff are good	2 (0.10%)
Ineffective treatment	12 (0.6%)
Bad experience in the past	11 (0.5%)
Preferred to see a community health worker	10 (0.5%)
Long wait	9 (0.4%)
Too far away/could not get transport	8 (0.4%)
Did not have time/childcare	6 (0.3%)
Institution not clean	1 (0.05%)
Other	59 (2.4%)

Table created by authors

Figure 2A. Results from Exploratory factor analysis

Factor	Eigenvalue	Difference	Proportion	Cumulative
Factor1	1.68102	1.18859	0.9568	0.9568
Factor2	0.49242	0.20410	0.2803	1.2371
Factor3	0.28833	0.28556	0.1641	1.4012
Factor4	0.00277	0.08887	0.0016	1.4028
Factor5	-0.08610	0.07015	-0.0490	1.3538
Factor6	-0.15625	0.04243	-0.0889	1.2648
Factor7	-0.19868	0.06793	-0.1131	1.1518
Factor8	-0.26662	.	-0.1518	1.0000

LR test: independent vs. saturated: $\chi^2(28) = 753.29$ Prob> $\chi^2 = 0.0000$

Factor loadings (pattern matrix) and unique variances

Variable	Factor1	Factor2	Factor3	Factor4	Uniqueness
waittime	-0.0580	0.5109	0.0099	0.0043	0.7355
constime	0.2874	-0.3876	-0.2122	0.0156	0.7219
decision_i~v	0.4465	0.1496	-0.2604	0.0242	0.7099
clarity	0.7342	0.1719	-0.0243	-0.0040	0.4308
follow_ease	0.2028	-0.1551	0.3134	0.0094	0.8365
trust_cont	0.5747	-0.0461	0.1668	-0.0075	0.6398
prov_skills	0.6963	0.0103	0.0589	-0.0127	0.5115
borrow_bin	-0.0223	0.0540	0.2130	0.0400	0.9496