

Supplementary material

Table S1: Demographic characteristics and vaccine status of cohort individuals aged 65 to 79 years and older, Portugal, March–August 2021 (n = 1,414,909).

	Vaxzevria 499,770	Janssen 40,484	mRNA 760,176	Unvaccinated 114,479
Age (years), median (IQR)	71.0 (68.0 - 75.0)	69.0 (67.0 - 72.0)	71.0 (68.0 - 75.0)	71.0 (68.0 - 75.0)
Age group, (%)				
65-69	178,573 (35.7%)	21,890 (54.1%)	297,449 (39.1%)	43,262 (37.8%)
70-74	194,191 (38.9%)	12,776 (31.6%)	257,681 (33.9%)	39,124 (34.2%)
75-79	127,006 (25.4%)	5,818 (14.4%)	205,046 (27.0%)	32,093 (28.0%)
Sex Male, n (%)	221,369 (44.3%)	18,407 (45.5%)	332,106 (43.7%)	51,302 (44.8%)
Region, n (%)				
Alentejo	27,817 (5.6%)	2,592 (6.4%)	35,331 (4.6%)	4,538 (4.0%)
Algarve	27,567 (5.5%)	6,318 (15.6%)	29,480 (3.9%)	12,502 (10.9%)
Centro	97,820 (19.6%)	10,582 (26.1%)	133,943 (17.6%)	19,034 (16.6%)
LVT	212,153 (42.5%)	11,646 (28.8%)	234,669 (30.9%)	41,354 (36.1%)
Norte	132,245 (26.5%)	8,864 (21.9%)	322,412 (42.4%)	25,612 (22.4%)
Missing	2,168 (0.4%)	482 (1.2%)	4,341 (0.6%)	11,439 (10.0%)
EDI Quintile, n (%)				
Q1 (least deprived)	66,389 (13.3%)	10,092 (24.9%)	118,691 (15.6%)	13,898 (12.1%)
Q2	78,578 (15.7%)	3,584 (8.9%)	112,593 (14.8%)	13,854 (12.1%)
Q3	74,384 (14.9%)	3,438 (8.5%)	111,310 (14.6%)	13,251 (11.6%)
Q4	137,234 (27.5%)	10,097 (24.9%)	221,903 (29.2%)	27,751 (24.2%)
Q5 (most deprived)	141,017 (28.2%)	12,791 (31.6%)	191,338 (25.2%)	34,286 (29.9%)
Missing	2,168 (0.4%)	482 (1.2%)	4,341 (0.6%)	11,439 (10.0%)
Number of chronic diseases, n (%)				
0	114,499 (22.9%)	11,877 (29.3%)	172,206 (22.7%)	56,005 (48.9%)
1	130,811 (26.2%)	10,636 (26.3%)	199,291 (26.2%)	24,891 (21.7%)
2	123,914 (24.8%)	9,162 (22.6%)	187,622 (24.7%)	17,238 (15.1%)
3	79,620 (15.9%)	5,507 (13.6%)	121,101 (15.9%)	9,755 (8.5%)
4	34,814 (7.0%)	2,274 (5.6%)	54,174 (7.1%)	4,406 (3.8%)
5+	16,112 (3.2%)	1,028 (2.5%)	25,782 (3.4%)	2,184 (1.9%)
Number of SARS-CoV-2 tests in 2021, n (%)				
0	390,166 (78.1%)	30,999 (76.6%)	597,080 (78.5%)	88,703 (77.5%)
1	66,129 (13.2%)	5,226 (12.9%)	95,874 (12.6%)	14,323 (12.5%)
2	23,741 (4.8%)	1,865 (4.6%)	34,980 (4.6%)	4,943 (4.3%)
3	8,557 (1.7%)	798 (2.0%)	12,593 (1.7%)	2,021 (1.8%)
4-9	9,835 (2.0%)	1,277 (3.2%)	16,586 (2.2%)	3,514 (3.1%)
10+	1,342 (0.3%)	319 (0.8%)	3,063 (0.4%)	975 (0.9%)
Any other vaccine, n (%)†	325,333 (65.1%)	18,503 (45.7%)	497,594 (65.5%)	21,684 (18.9%)

† received at least one of the following vaccines since 2016, influenza, pn23, pcv 7, 10 or 13

Table S2: Demographic characteristics and vaccine status of cohort individuals aged ≥80 years and older, Portugal, February–August 2021 (n = 470,025).

	Vaxzevria 8,509	Janssen 2,191	mRNA 435,322	Unvaccinated 24,003
Age (years), median (IQR)	82.0 (80.0 - 86.0)	85.0 (82.0 - 88.0)	84.0 (82.0 - 88.0)	86.0 (83.0 - 90.0)
Age group, (%)				
80-84	5,681 (66.8%)	1,078 (49.2%)	222,717 (51.2%)	8,997 (37.5%)
85-89	2,022 (23.8%)	732 (33.4%)	145,526 (33.4%)	8,137 (33.9%)
90-94	660 (7.8%)	304 (13.9%)	54,263 (12.5%)	4,879 (20.3%)
95+	146 (1.7%)	77 (3.5%)	12,816 (2.9%)	1,990 (8.3%)
Sex Male, n (%)	3,517 (41.3%)	769 (35.1%)	176,846 (40.6%)	8,645 (36.0%)
Region, n (%)				
Alentejo	1,308 (15.4%)	186 (8.5%)	24,081 (5.5%)	1,106 (4.6%)
Algarve	884 (10.4%)	313 (14.3%)	15,897 (3.7%)	1,412 (5.9%)
Centro	1,547 (18.2%)	519 (23.7%)	91,855 (21.1%)	4,627 (19.3%)
LVT	2,710 (31.8%)	699 (31.9%)	142,581 (32.8%)	7,969 (33.2%)
Norte	2,012 (23.6%)	460 (21.0%)	159,442 (36.6%)	8,095 (33.7%)
Missing	48 (0.6%)	14 (0.6%)	1,466 (0.3%)	794 (3.3%)
EDI Quintile, n (%)				
Q1 (least deprived)	1,078 (12.7%)	366 (16.7%)	76,030 (17.5%)	3,836 (16.0%)
Q2	1,032 (12.1%)	285 (13.0%)	68,094 (15.6%)	3,403 (14.2%)
Q3	1,112 (13.1%)	268 (12.2%)	66,021 (15.2%)	3,582 (14.9%)
Q4	2,294 (27.0%)	519 (23.7%)	120,749 (27.7%)	6,312 (26.3%)
Q5 (most deprived)	2,945 (34.6%)	739 (33.7%)	102,962 (23.7%)	6,076 (25.3%)
Missing	48 (0.6%)	14 (0.6%)	1,466 (0.3%)	794 (3.3%)
Number of chronic diseases, n (%)				
0	956 (11.2%)	313 (14.3%)	44,531 (10.2%)	8,927 (37.2%)
1	1,529 (18.0%)	382 (17.4%)	82,962 (19.1%)	3,687 (15.4%)
2	2,024 (23.8%)	523 (23.9%)	112,314 (25.8%)	4,258 (17.7%)
3	1,885 (22.2%)	471 (21.5%)	96,833 (22.2%)	3,620 (15.1%)
4	1,207 (14.2%)	288 (13.1%)	58,377 (13.4%)	2,002 (8.3%)
5+	908 (10.7%)	214 (9.8%)	40,305 (9.3%)	1,509 (6.3%)
Number of SARS-CoV-2 tests in 2021, n (%)				
0	5,651 (66.4%)	1,330 (60.7%)	327,670 (75.3%)	15,614 (65.1%)
1	1,304 (15.3%)	329 (15.0%)	52,314 (12.0%)	3,110 (13.0%)
2	624 (7.3%)	165 (7.5%)	22,336 (5.1%)	1,719 (7.2%)
3	330 (3.9%)	86 (3.9%)	11,110 (2.6%)	1,033 (4.3%)
4-9	524 (6.2%)	230 (10.5%)	19,170 (4.4%)	2,218 (9.2%)
10+	76 (0.9%)	51 (2.3%)	2,722 (0.6%)	309 (1.3%)
Any other vaccine, n (%)†	8,047 (94.6%)	1,984 (90.6%)	420,208 (96.5%)	19,865 (82.8%)

† received at least one of the following vaccines since 2016, influenza, pn23, pcv 7, 10 or 13

Graphs

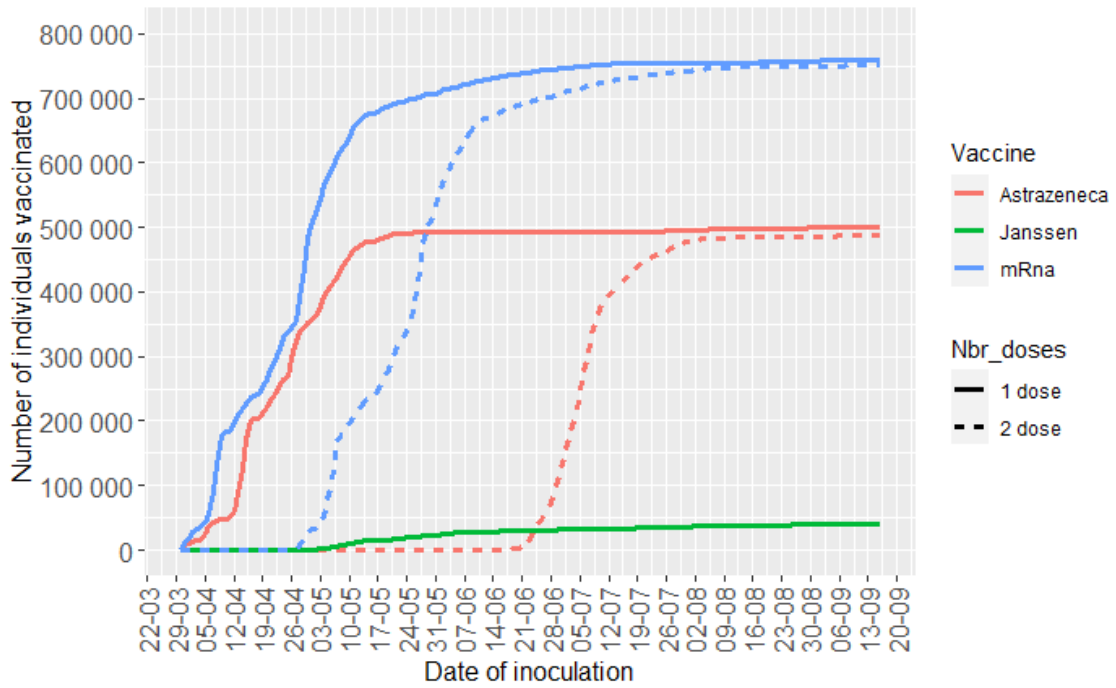


Figure S1: 65-79

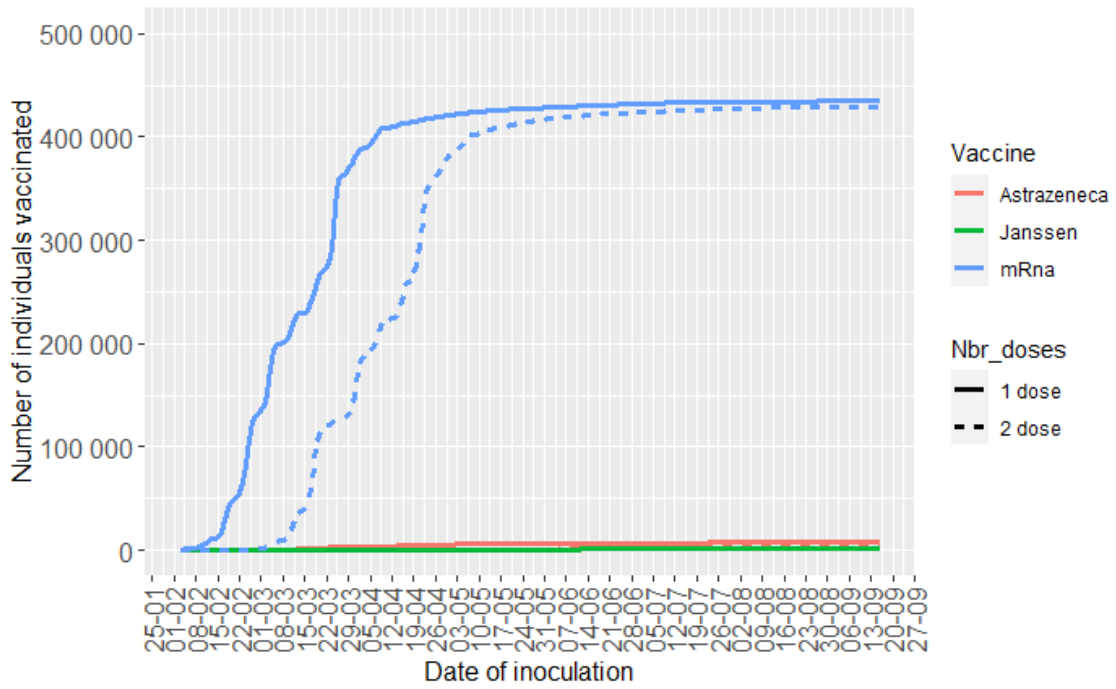


Figure S2 ≥80

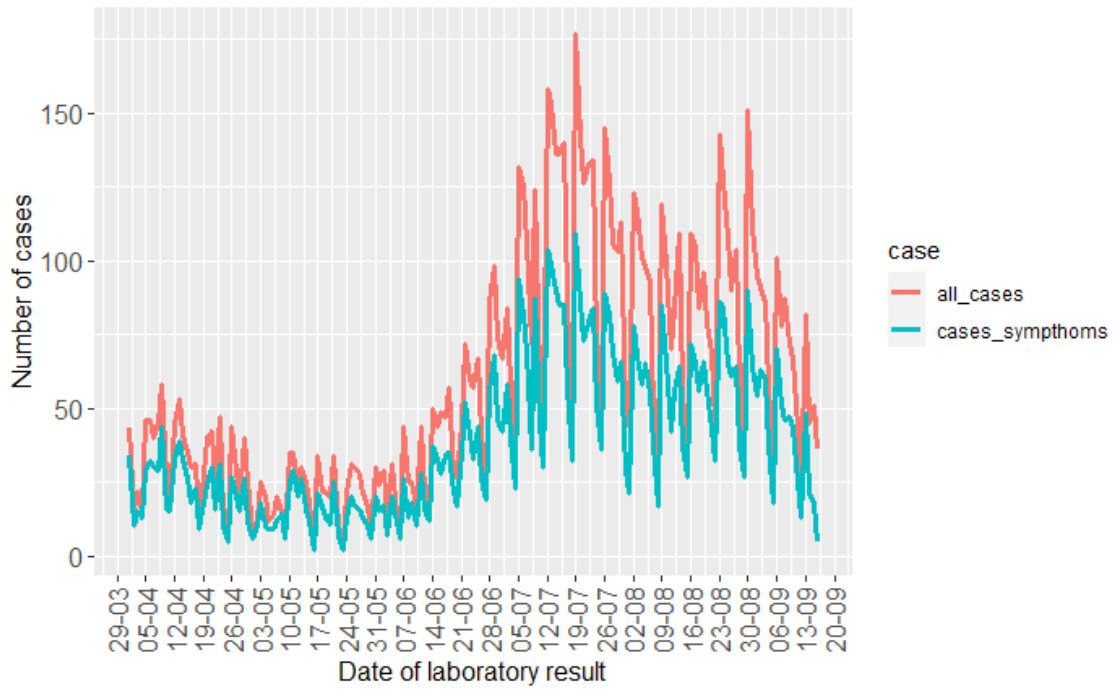


Figure S4 SARS-CoV-2 infection cases in the period of study cohort 65-79 years of age

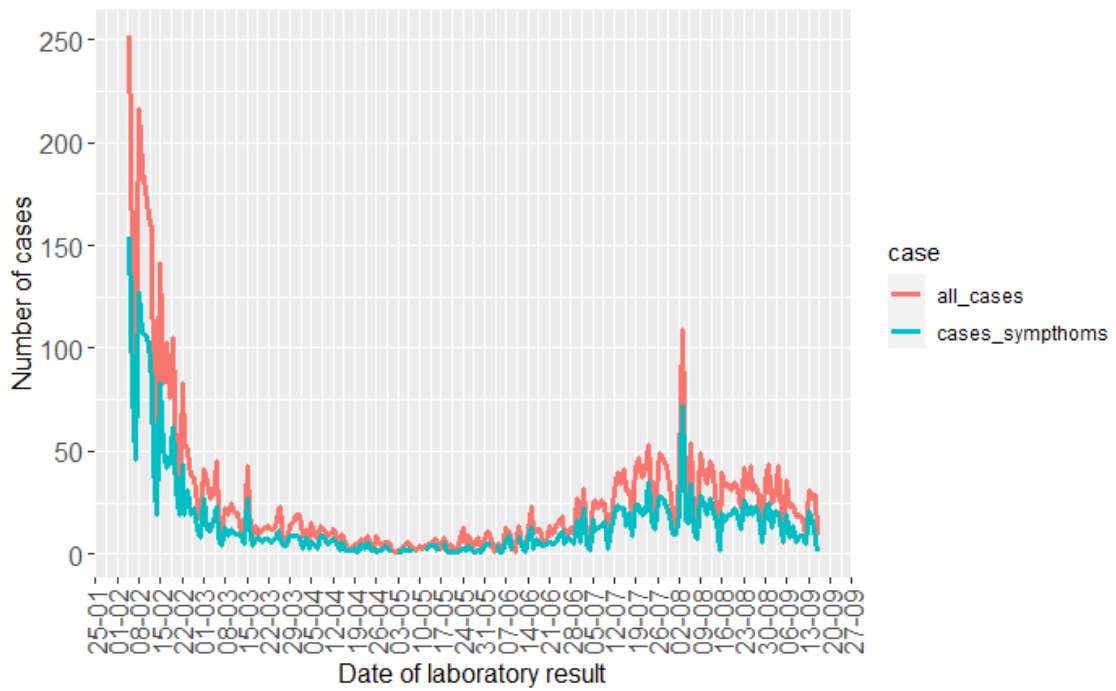


Figure S5 SARS-CoV-2 infection cases in the period of study cohort ≥80 years of age

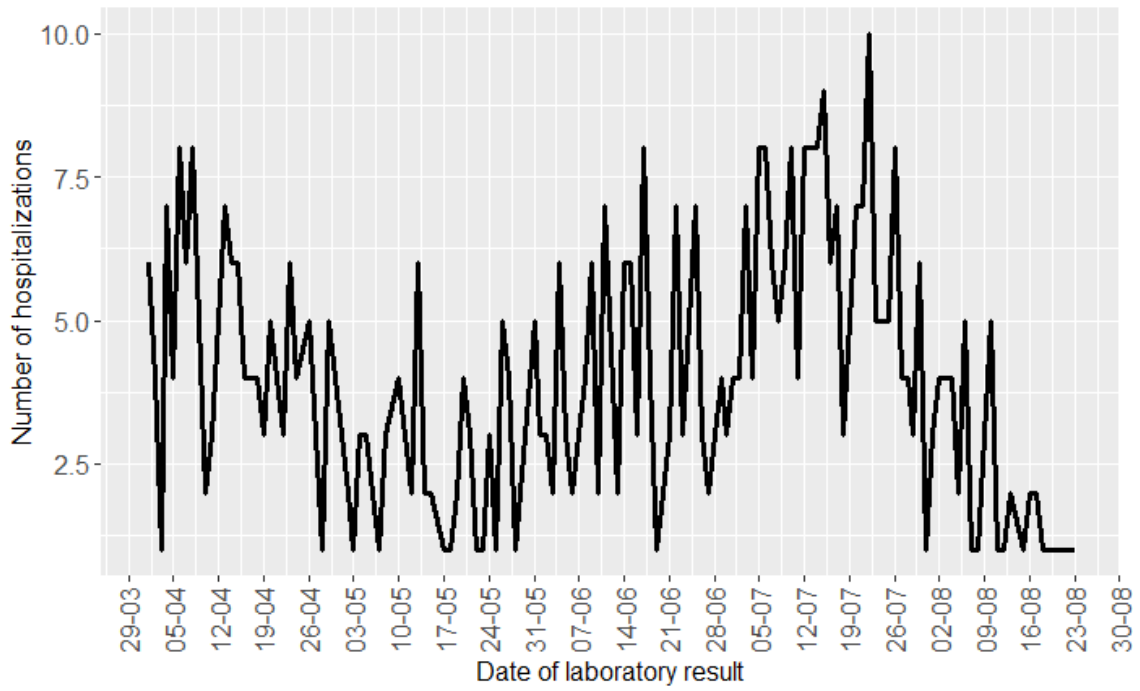


Figure S7 COVID-19 related hospitalizations in the period of study cohort 65-79 years of age

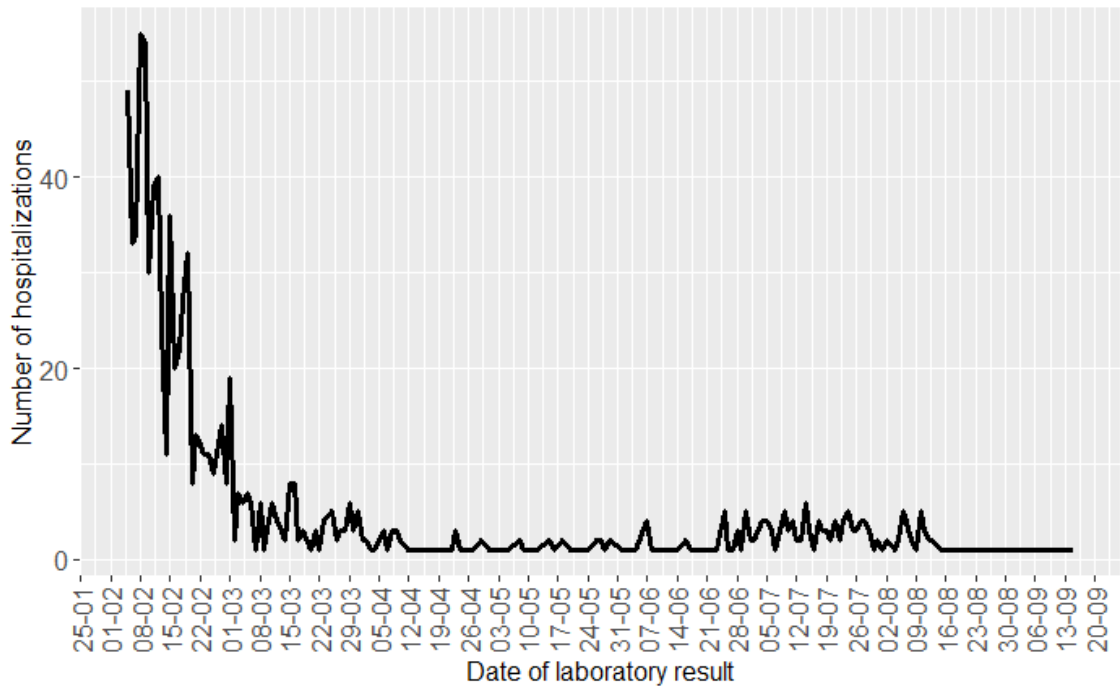


Figure S8 COVID-19 related hospitalizations in the period of study cohort ≥ 80 years of age

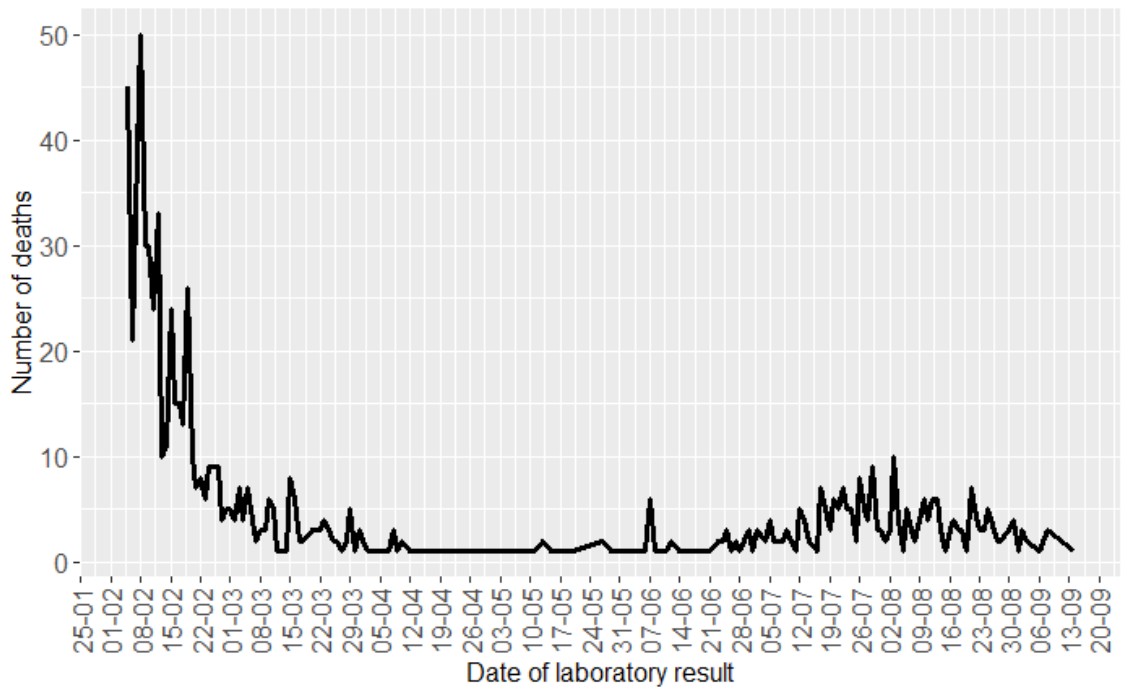


Figure S9 COVID-19 related deaths in the period of study cohort ≥ 80 years of age

Flowchart

