

1 Evaluation of transplacental transfer of mRNA vaccine products and functional antibodies during  
2 pregnancy and early infancy

3

4 Mary Prah1, M.D., Yarden Golan, Ph.D., Arianna G. Cassidy, M.D., Yusuke Matsui M.D., Ph.D.,  
5 Lin Li, M.D., PhD, Bonny Alvarenga, Hao Chen, Ph.D., Unurzul Jigmeddagva, M.D., Christine Y.  
6 Lin, Veronica J. Gonzalez, M.D, Megan A. Chidboy, Lakshmi Warri1r, Sirirak Buarpung, D.V.M.,  
7 Ph.D., Amy P. Murtha M.D., Valerie J. Flaherman, M.D., M.P.H., Warner C. Greene M.D.,  
8 Ph.D., Alan H.B. Wu, Ph.D., Kara L. Lynch Ph.D., Jayant Rajan, M.D., Ph.D., Stephanie L. Gaw,  
9 M.D., Ph.D

10

11 Author Affiliations

12 From the Department of Pediatrics, University of California, San Francisco (M.P., V.J.F.),  
13 Division of Pediatric Infectious Diseases and Global Health, University of California, San  
14 Francisco (M.P.), Department of Bioengineering and Therapeutic Sciences, University of  
15 California, San Francisco (Y.G.), Department of Medicine, University of California, San  
16 Francisco (L.W., B.A., J.R.), Weill Institute for Neurosciences, Division of Neurology, University  
17 of California, San Francisco, CA (B.A.), Gladstone Center for HIV Cure Research, Gladstone  
18 Institute, San Francisco, CA (Y.M., W.C.G.) Departments of Medicine and Microbiology and  
19 Immunology, University of California, San Francisco (W.C.G.), Department of Laboratory  
20 Medicine, University of California, San Francisco (A.H.B.W., K.L.L.), Center for Reproductive  
21 Sciences, Department of Obstetrics, Gynecology, and Reproductive Sciences, University of  
22 California San Francisco (A.G.C., L.L., H.C., U.J., C.Y.L., V.J.G., M.A.C., S.B., A.P.M., S.L.G.).

23

24 Co-Corresponding authors: 1) Mary Prah1- Division of Pediatric Infectious Diseases and Global  
25 Health, Department of Pediatrics, University of California San Francisco, 550 16<sup>th</sup> St. 4<sup>th</sup> Floor.  
26 San Francisco, CA 94158. Phone (415) 514-0510, Email: [mary.prah1@ucsf.edu](mailto:mary.prah1@ucsf.edu) 2) Stephanie L.

27 Gaw-Division of Maternal-Fetal Medicine, Department of Obstetrics, Gynecology, and  
28 Reproductive Sciences, University of California San Francisco, 513 Parnassus Ave, HSE16,  
29 Box 0556, San Francisco, CA 94143. Phone: (415) 476-0535. Email: Stephanie.Gaw@ucsf.edu

30

### 31 Abstract

32 Studies are needed to evaluate the safety and effectiveness of mRNA SARS-CoV-2 vaccination  
33 during pregnancy, and the levels of protection provided to their newborns through placental  
34 transfer of antibodies. We evaluated the transplacental transfer of mRNA vaccine products and  
35 functional anti-SARS-CoV-2 antibodies during pregnancy and early infancy in a cohort of 20  
36 individuals vaccinated during pregnancy. We found no evidence of mRNA vaccine products in  
37 maternal blood, placenta tissue, or cord blood at delivery. However, we found time-dependent  
38 efficient transfer of IgG and neutralizing antibodies to the neonate that persisted during early  
39 infancy. Additionally, using phage immunoprecipitation sequencing, we found a vaccine-specific  
40 signature of SARS-CoV-2 Spike protein epitope binding that is transplacentally transferred  
41 during pregnancy. In conclusion, products of mRNA vaccines are not transferred to the fetus  
42 during pregnancy, however timing of vaccination during pregnancy is critical to ensure  
43 transplacental transfer of protective antibodies during early infancy.

44

### 45 Keywords

46 SARS-CoV-2, COVID-19, Pregnancy, Vaccine, Antibody, Neonatal Immunity, Neutralizing  
47 Antibody, Phage Array, mRNA Vaccination, BNT-162b2, mRNA-1273, Placenta, Cord Blood

48

### 49 Introduction

50 Growing evidence has shown that pregnant individuals are at higher risk for SARS-CoV-  
51 2-related morbidity and mortality<sup>1-4</sup>. Despite this, vaccination uptake by pregnant individuals has  
52 been slower than the general population<sup>5</sup>, in part because of maternal concern of adverse

53 effects on the embryo or fetus, even with strong consensus recommendations for COVID-19  
54 vaccination prior to or during pregnancy from several medical societies<sup>6</sup>. Pregnant individuals  
55 were excluded from initial vaccine trials, and complete data on safety, efficacy, optimal timing of  
56 the vaccine in pregnancy, or its impact on the fetus has been delayed<sup>7</sup>, which may impact  
57 individual medical decision making. Current COVID-19 vaccines fully approved and under  
58 emergency use in the United States include the mRNA vaccines BNT-162b2 and mRNA-1273,  
59 which target the SARS-CoV-2 Spike protein and stimulate protective immune responses<sup>8,9</sup>. In  
60 addition to protecting the mother against severe disease, vaccination during pregnancy may  
61 protect the newborn through passive transfer of maternal immunoglobulin. SARS-CoV-2  
62 infection and vaccination during pregnancy produces an IgG response that is transferred to the  
63 fetus<sup>10-16</sup>. Evidence of newborn protection might help address maternal concerns about adverse  
64 effects. However, detailed studies of the transplacental transfer of vaccine products and  
65 vaccine-related antibody dynamics, functional properties, and persistence during infancy of  
66 transferred SARS-CoV-2 antibodies are needed to provide such evidence.

67 We examined the transplacental transfer of mRNA vaccine products and humoral  
68 responses using samples from pregnant individuals and their infants vaccinated with either  
69 BNT-162b2 or mRNA-1273 mRNA vaccine during pregnancy.

70

## 71 **Results:**

72 **Cohort:** We evaluated 20 pregnant individuals who received COVID-19 mRNA vaccines during  
73 pregnancy and their infants. Participants were vaccinated between December 2020 and April  
74 2021. Gestational age at first dose ranged from 13 weeks to 40 weeks (mean 31.2, SD 5.9  
75 weeks). Nineteen participants delivered live, singleton infants between January 2021 through  
76 April 2021 at gestational ages ranging from 37.4 to 41.1 weeks (mean 39.2, SD 1.1 weeks).  
77 One participant who was vaccinated at 13 weeks had a termination of pregnancy due to a lethal  
78 skeletal dysplasia of genetic etiology at 20.4 weeks. Eight participants received BNT-162b2

79 (Pfizer-BioNTech) and twelve received mRNA-1273 (Moderna) vaccines. Eighteen participants  
80 received both vaccine doses prior to delivery, and two participants received the second dose  
81 after delivery. The time from first mRNA vaccine dose ranged from 6-97 (mean 51, SD 24.3)  
82 days prior to delivery, time from the second dose ranged from 2-75 (mean 32, SD 21.3) days  
83 prior to delivery, and in two participants 15 and 21 days after delivery. No participants received  
84 a 3<sup>rd</sup> dose prior to delivery. Infants born to vaccinated mothers were followed up at convenience  
85 time points ranging from age 3 weeks to 15 weeks of life (mean 8.3, SD 3.2). Further  
86 demographic data is detailed in Table S1.

87

### 88 **Vaccine mRNA products do not cross the placenta**

89 To determine the transplacental transfer of mRNA vaccine derived products, we  
90 examined available maternal blood at delivery, placenta tissue, and cord blood for Spike protein  
91 by Western blot and vaccine mRNA by PCR. All available delivery samples (maternal blood,  
92 placental tissue, and cord blood) were negative for Spike protein by Western blot (Supp Figure  
93 1, Supp Table 3) and did not have detectable levels of vaccine mRNA by PCR (Suppl Table 3).  
94 Together, this indicates that products of mRNA vaccination do not reach the fetus after  
95 vaccination during pregnancy at readily detectable levels.

96

### 97 **mRNA vaccination in pregnancy leads to a robust antibody response**

98 Similar to prior studies<sup>14,15,17</sup>, we found that mRNA vaccination during pregnancy led to  
99 an increase in anti-SARS-Cov-2 IgG following dose 1 (n=7, mean 388.6, SD 224.8 RFU) and an  
100 even further robust increase after vaccination dose 2 (n=12, mean 3214, SD 1383 RFU). Anti-  
101 SARS-CoV-2 IgM (n=7, mean 53.3, SD 50.2 RFU) was detected in two maternal participants  
102 following dose 1, but only 1 participant following dose 2 (n=12, mean 23.8, SD 17 RFU, Fig 1).

103

104 **Vaccine induced anti-SARS-CoV-2 IgG and neutralizing antibodies are transplacentally**  
105 **transferred**

106 We then evaluated the transplacental transfer of maternally derived anti-SARS-CoV-2  
107 IgG antibodies to their infants. Maternal blood at delivery was available in 19/20 participants and  
108 cord blood was available in 17/20 participants. Anti-SARS-CoV-2 IgG was detectable in 94.7%  
109 (18/19) of maternal blood samples at delivery (mean 3235, range [10, 7811] RFU). Anti-SARS-  
110 CoV-2 IgG was detectable in 88.2% (15/17) cord blood samples (mean 2243, range [2, 4959]  
111 RFU). One participant received one mRNA vaccine dose 9 days prior to delivery, and both the  
112 maternal and cord blood were negative for IgG at the time of delivery. Another participant  
113 received two doses of mRNA vaccine (23 and 2 days) prior to delivery and maternal blood was  
114 positive at 55 RFU (positive cutoff >50 RFU), however cord blood IgG was negative (Figure 2A).  
115 Maternal and cord blood anti-SARS-CoV-2 IgG levels were moderately correlated, but not  
116 statistically significant ( $p=0.074$ ,  $R_s=0.446$ , Fig 2A). All cord blood samples were anti-SARS-  
117 CoV-2 IgM negative.

118 We next evaluated the transplacental transfer of neutralizing antibody titers by a label-  
119 free surrogate neutralization assay (sVNT) from mother to cord blood. Maternal and cord blood  
120 at delivery had robust neutralizing responses (maternal  $n=17$ , mean 220.2, range [0, 422]. Cord  
121 blood  $n=16$ , mean 296.6, range [0, 485], Fig 2B). All mother-infant dyads with positive IgG  
122 serology at delivery had detectable transplacental transfer of neutralizing antibodies with the  
123 exception of one pair in which the mother was borderline IgG positive at delivery and cord blood  
124 was negative, for which both maternal and cord blood were negative for neutralizing titers (Fig  
125 2B). However, maternal and cord blood neutralizing titers were not significantly correlated  
126 ( $p=0.361$ ,  $R_s=-0.244$ , Fig 2B). Taken together, this indicates that maternal mRNA vaccination  
127 induces functional neutralizing antibodies that are transferred to the infant.

128

129 **Maternally-derived vaccine induced anti-SARS-CoV-2 IgG and neutralizing antibodies**  
130 **persist through early infancy**

131 A subset of infants was sampled at convenience timepoints during follow up (infant  
132 n=11, weeks of life range [3,15] mean 8.3 weeks). Anti-SARS-CoV-2 IgG levels were positive in  
133 81.8% of infants at follow-up (9/11 infants, mean 1290, range [1, 3225] RFU, Fig 2A), with one  
134 infant still IgG positive at 12 weeks of age (Fig 2C). The two infants that were IgG negative at  
135 follow up were both born to mothers who received only one vaccine dose prior to delivery (6 and  
136 9 days, respectively). One of these infants did not have paired maternal or cord blood available  
137 at the time of delivery for comparison, and the other was IgG negative in cord blood. Maternal  
138 and infant follow-up anti-SARS-CoV-2 IgG levels were not significantly correlated; however,  
139 cord blood and infant follow-up IgG levels were significantly associated ( $p=0.492$ ,  $R_s=0.249$  and  
140  $p=0.021$ ,  $R_s=0.76$ , respectively, Fig 2A). All infants were IgM negative at the time of follow up.

141 All infants with available IgG positive samples at follow up had detectable neutralizing  
142 titers (n=8, mean 154, range [41-256], Fig 2B). Maternal and infant follow-up neutralizing titers  
143 were not significantly correlated, as well as cord and infant follow up neutralizing titers ( $p=0.665$ ,  
144  $R_s=-0.191$  and  $p=0.662$ ,  $R_s=0.214$ , respectively, Fig 2B).

145 To compare the rate of decay of IgG antibody levels in mothers and their infants, we  
146 evaluated 5 dyads with paired maternal and infant blood samples on the same day at the time of  
147 follow-up (range 3-9 weeks post-delivery). Maternal antibody IgG levels decreased faster in  
148 mothers than infants (mean delta -974 RFU and -670 RFU, respectively. Fig 2E) at the follow up  
149 timepoint. Taken together this indicates, maternally-derived functional vaccine induced  
150 antibodies persist at high levels in newborns through early infancy during a critical time of  
151 immune vulnerability and may decay slower than maternal IgG antibodies.

152

153 **Vaccine induced antibody timing and transplacental facilitated transfer**

154 We assessed the relationship of anti-SARS-CoV-2 IgG levels to neutralizing antibody  
155 levels. We found a strong correlation between IgG and neutralizing titers in maternal plasma at  
156 delivery ( $R_s=0.744$ ,  $p=0.0012$ ) and infant follow up ( $R_s=0.738$ ,  $p=0.046$ ) timepoints, but no  
157 significant association between IgG and neutralizing titers in cord blood ( $R_s=0.121$ ,  $p=0.656$ ,  
158 Figure 3).

159 We then evaluated the impact of timing of vaccination on maternal antibody levels at  
160 delivery. We found no statistically significant correlation between maternal IgG levels at delivery  
161 and time since dose 1 ( $R_s=-0.335$ ,  $p=0.160$ ) and gestational age at delivery ( $R_s=0.270$ ,  $p=0.265$ ,  
162 Fig 4A,B). This lack of correlation appeared to be driven by two participants that had low or  
163 absent levels of antibodies at delivery and received their first dose of vaccine within 30 days of  
164 delivery. We then evaluated neutralizing titers in those participants with known detectable IgG  
165 levels at delivery and found that maternal neutralizing titers at delivery trended with days since  
166 vaccine dose 1 but was not statistically significantly ( $R_s=-0.422$ ,  $p=0.093$ ), and maternal  
167 neutralizing titers at delivery was not associated with gestational age at dose 1 ( $R_s=0.074$ ,  
168  $p=0.780$ ). One participant was borderline IgG positive at delivery (vaccinated within 30 days of  
169 delivery) and did not have detectable neutralizing titers at delivery (Fig 4C,D).

170 To assess facilitated antibody transfer, we evaluated cord-to-maternal antibody IgG and  
171 neutralization titer ratios by time since vaccination and gestational age. We found that IgG ratios  
172 were highly correlated with both time since first maternal vaccination dose and gestational age  
173 at first dose ( $R_s=0.917$ ,  $p<0.0001$  and  $R_s=-0.739$ ,  $p=0.002$ , respectively. Fig 4E,F). However,  
174 neutralization titer cord-to-maternal ratios by time since first vaccination dose and gestational  
175 age at first dose were not significantly associated ( $R_s=0.366$ ,  $p=0.179$  and  $R_s=-0.032$ ,  $p=0.913$ ,  
176 respectively, Figure 4G,H). Together, this may indicate that timing of vaccination in pregnancy is  
177 critical for maternal-fetal antibody transfer, and functional neutralizing antibodies are  
178 differentially transferred to the fetus as compared to total anti-SARS-CoV-2 IgG during  
179 gestation.

180

181 **mRNA vaccination leads to a unique SARS-CoV2 Spike protein antibody epitope binding**  
182 **signature**

183 We next investigated antibody linear epitope binding and transplacental transfer using  
184 the PhIP-seq/VirScan SARS-CoV-2 Spike protein phage display array in mother-infant dyads at  
185 the time of birth (Figure 5). We found that timing of vaccination was important for the trans-  
186 placental transfer of Spike protein epitope binding antibodies. Two mother-infant dyads had  
187 minimal Spike protein specific epitope binding. The first dyad only received one dose of mRNA  
188 vaccine 9 days prior to delivery, and the other dyad received the second vaccine dose 2 days  
189 prior to delivery.

190 We found high levels of SARS-CoV-2 Spike protein epitope binding in 4 major peaks we  
191 designate as regions 1-4 (Figure 5A). Region 1 overlays the carboxy terminal of the N-terminal  
192 domain. Region 2 overlaps with key residues for the S1/S2 cleavage site. Regions 3 and 4 are  
193 within S2, flanking the fusion loop and the transmembrane portion of the Spike protein,  
194 respectively. However, we found minimal binding in the receptor binding domain (RBD) of Spike  
195 protein. Prior evaluation using the PhIP-seq/VirScan SARS-CoV-2 epitope phage array during  
196 SARS-CoV-2 infection demonstrated similar binding in regions 3 and 4, however in SARS-CoV-  
197 2 infection there was minimal binding in regions 1 and 2 demonstrating that antibody epitope  
198 binding in these regions may be unique to vaccination<sup>18</sup>. Additionally, there is proportional  
199 representation of linear epitope binding across the SARS-CoV-2 Spike protein proteome  
200 between mothers and infants (Figure 5B). Taken together, SARS-CoV-2 antibody linear epitope  
201 binding after vaccination during pregnancy shows similar patterns, with multiple  
202 immunodominant regions found in the majority of mothers and infants. Some of these regions  
203 are unique to vaccination and not observed during natural infection<sup>18-20</sup>.

204

205 **Discussion**



206           Among twenty women who received the COVID-19 mRNA vaccine during pregnancy,  
207 our study found no evidence of transplacental transfer of mRNA vaccine products but did find  
208 high levels of functional vaccine-derived antibodies that transferred to the infant at delivery and  
209 persisted during early infancy. Additionally, we identified high levels of epitope binding in two  
210 regions of Spike protein unique to SARS-CoV-2 vaccination<sup>18</sup>. These data may address some of  
211 the many unanswered questions regarding COVID-19 vaccination in pregnancy: including the  
212 dynamics of antibody production in the pregnant immune state, and the optimal timing of  
213 immunization in pregnancy to impart passive immunity to the newborn during the vulnerable first  
214 few weeks of infancy.

215           Uptake of COVID-19 vaccination in pregnancy has been slow<sup>5</sup>, and reasons for vaccine  
216 hesitancy are likely multifactorial — but theoretical concerns that vaccine mRNA could cross the  
217 placenta have been raised. We found no evidence of mRNA vaccine products in any of our  
218 delivery samples. Additionally, no infants in our study had a fetal immune response to Spike  
219 protein as demonstrated by a negative anti-SARS-CoV-2 IgM antibody in cord blood and infant  
220 follow up samples. This further supports the lack of transfer of vaccine products, as only IgG is  
221 transferred from the mother, and IgM production would indicate an endogenous fetal immune  
222 response which has rarely been seen in natural infection with SARS-CoV-2 during pregnancy  
223 <sup>16,21-23</sup>. This provides additional reassurance that mRNA vaccination is safe during pregnancy.

224           We found that the timing of immunization during pregnancy is important to ensure trans-  
225 placental transfer of protective antibodies to the neonate, and during critical windows of immune  
226 vulnerability during early infancy. Consistent with prior studies showing robust immune  
227 responses to mRNA vaccination<sup>14,15,17</sup>, we found high levels of IgG after two doses of mRNA  
228 vaccine. However, completion of the vaccination series well before delivery was important to  
229 ensure transfer of antibodies to the infant. Two mothers only received one vaccine dose prior to  
230 delivery and did not transfer antibodies as demonstrated by the lack of antibodies in cord (in one  
231 with available cord blood) and in both infants at follow-up. Additionally, neutralizing antibodies

232 were not transferred in a mother who received her second dose of vaccine 2 days prior to  
233 delivery. All evaluated mothers who received both doses during pregnancy and with the second  
234 dose greater than 9 days prior to delivery transferred IgG and neutralizing antibodies to their  
235 infants. Consistent with early studies of antibody transfer after COVID-19 vaccination in  
236 pregnancy, most of our participants were vaccinated in the third trimester of pregnancy. Larger  
237 studies of individuals vaccinated prior to pregnancy and in the first and second trimester are  
238 needed to understand persistence and waning of vaccine-induced immune responses.

239         Additionally, we believe we are the first to report that infants in the first few months of life  
240 continued to have maternal vaccine-derived anti-SARS-CoV-2 antibodies that were functional  
241 as demonstrated by high levels of neutralizing antibodies presenting infants up to 12 weeks of  
242 age. This is consistent with known persistence of maternally-derived antibodies from other  
243 vaccinations including pertussis, rubella, varicella<sup>24-26</sup>. Additionally, we have previously found  
244 persistence of anti-SARS-CoV-2 IgG antibodies in infants after natural infection up to 6  
245 months<sup>16</sup>. However, the functional capability of these antibodies as compared to anti-SARS-  
246 CoV-2 vaccination-derived antibodies is unknown. Further evaluation of the longitudinal  
247 persistence of maternal vaccine-derived antibodies during infancy will be critical to determine  
248 optimal timing of COVID-19 vaccination in infancy.

249         Evaluation of paired maternal and baby samples at post-partum follow up timepoints  
250 showed a faster decline in maternal IgG antibody levels than infants, suggesting that  
251 persistence of maternally-derived antibody may be prolonged for infants. Differences in renal  
252 excretion and neonatal Fc receptor (FcRn) expression, which is involved in antibody  
253 degradation<sup>27</sup> in the infant as compared to adults, could underly these differences and should be  
254 explored further.

255         Consistent with observations in non-pregnant adults, we found that IgG levels in mothers  
256 at delivery, and at infant follow-up were highly correlated with neutralizing titers<sup>28</sup>. However,  
257 cord blood IgG levels did not correlate with neutralizing titers. Moreover, IgG cord-to-maternal

258 ratios, which represent a proxy of maternal to fetal antibody transfer, were highly correlated with  
259 timing of vaccination (gestational age and days since the first dose), but cord-to-maternal  
260 neutralizing titer ratios were not significantly associated with time since vaccination nor  
261 gestational age. During gestation there is facilitated transfer of maternally derived antibodies  
262 through the binding of the neonatal Fc receptor in the syncytiotrophoblast layer<sup>29</sup>. Differences in  
263 glycosylation<sup>30,31</sup>, FcR/FcRn binding affinity<sup>17,32</sup>, preferential IgG subclass transfer<sup>33,34</sup> may be  
264 different in functional neutralizing antibodies as compared to total IgG antibody transfer.  
265 However, a limitation of this study is the majority of participants were vaccinated in the third  
266 trimester. Further investigations on factors that influence the transport of functional antibodies  
267 across trimesters are needed to understand antibody dynamics and optimal transfer of  
268 protective antibodies to infants.

269         Using a PhIP-seq/VirScan SARS-CoV-2 Spike protein phage array we were able to  
270 compare linear epitope antibody binding in mothers and their infants. Consistent with IgG and  
271 neutralizing antibody evaluation, timing of vaccination was critical to ensure the transplacental  
272 transfer of antibodies to the infant. Additionally, we identified unique regions of antibody epitope  
273 binding in our vaccinated cohort that were not identified using the same phage library in a prior  
274 evaluation of a cohort of SARS-CoV-2 infected individuals<sup>18</sup>. One of these regions included the  
275 carboxy terminal of the N-terminal domain, with other work having shown that the N-terminal  
276 domain is targeted by neutralizing antibodies against Spike protein<sup>35</sup>. We did not see significant  
277 binding in the receptor binding domain (RBD), which may be attributable to the fact that the  
278 phage display library displayed short, linear peptides while antibodies targeting RBD are known  
279 to target conformational epitopes. Lastly, we found that the same immunodominant regions  
280 targeted by antibodies targeting the Spike protein in both mothers and infants.

281         In summary, this work provides further evidence that mRNA vaccination is safe in  
282 pregnancy and demonstrates that it generates time-dependent protective, functional antibody  
283 responses in mothers and infants that persist during early infancy.

284

285 **Methods**

286 **Cohort and Sample collection:** The University of California San Francisco (UCSF) institutional  
287 review board approved the study (20-32077). Written informed consent was obtained from all  
288 participants. We enrolled 20 pregnant individuals who were vaccinated with either BNT-162b2  
289 or mRNA-1273 mRNA vaccines. Pregnant individuals were followed through delivery, and their  
290 infants were followed up to 12 weeks of life. Maternal blood was collected during pregnancy  
291 (pre-vaccine, 3-4 weeks post-dose 1, 4-8 weeks post-dose 2). During delivery, maternal blood,  
292 placenta tissue, and cord blood was collected. Infant follow-up blood was collected at  
293 convenience timepoints. Whole blood was immediately added to RNeasy in a 1:1.3 ratio.  
294 Plasma was isolated from whole blood by centrifugation and immediately cryopreserved. Full-  
295 thickness placental biopsy was collected within 1 hour of delivery, washed three times with  
296 phosphate buffered saline, and preserved in RNeasy.

297

298 **SARS-CoV-2 plasma serology.** Anti-SARS-CoV-2 plasma IgM and IgG antibodies were  
299 measured using the Pylon 3D automated immunoassay system (ET Healthcare, Palo Alto, CA).  
300 In brief, quartz glass probes are pre-coated with either affinity purified goat anti Human IgM (IgM  
301 capture) or Protein G (IgG capture) are dipped into diluted patient sample. Samples are  
302 washed, and then the probe is dipped into the assay reagent containing both biotinylated  
303 recombinant spike protein receptor binding domain (RBD) and nucleocapsid protein (NP). After  
304 a washing, the probe is incubated with a Cy5-streptavidin (Cy5-SA) polysaccharide conjugate  
305 reagent, allowing for cyclic amplification of the fluorescence signal. The background corrected  
306 signal is reported as relative fluorescent units (RFU) which is proportional to the amount of  
307 specific antibodies in the sample allowing for quantification. Levels of IgM and IgG were  
308 considered positive if greater than 50 relative fluorescence units.

309

310 **SARS-CoV-2 neutralizing assay**

311 SARS-CoV-2 antibody neutralization titers were measured using a label-free surrogate  
312 neutralization assay (LF-sVNT) previously described<sup>28</sup>. Briefly, the method measures the  
313 binding ability of recombinant RBD (Sino Biological, Wayne, PA) coated onto sensing probes  
314 (Gator Bio, Palo Alto, CA) to recombinant ACE2 (Sino Biological, Wayne, PA) after neutralizing  
315 RBD with SARS-CoV-2 antibodies in serum. Measurements were done using a thin-film  
316 interferometry (TFI) label-free immunoassay analyzer (Gator Bio, Palo Alto, CA). Each serum  
317 sample was diluted in a series (1:25, 1:100, 1:250, 1:500, 1:1000, 1:2000) in running buffer  
318 (PBS at pH 7.4 with 0.02% Tween 20, 0.2% BSA, and 0.05% NaN<sub>3</sub>) for analysis. The first  
319 testing cycle for each diluted sample measured the binding ability of RBD to ACE2 with  
320 neutralization, and the second cycle provided the full binding ability of RBD without  
321 neutralization. In each cycle, the recorded time course of signals, as known as the sensorgram,  
322 was recorded. The readout measured the signal increase in RBD-ACE2 complex formation,  
323 representing the quantity of RBD-ACE2 complex on the sensing probe. A neutralization rate  
324 was calculated as the ratio of the readout in the first cycle to that in the second cycle, presented  
325 as a percentage. To obtain the neutralizing antibody titer (IC<sub>50</sub>) for each serum sample, the  
326 neutralization rates were plotted against dilutions, and the points were fitted using a linear  
327 interpolation model. The reciprocal of the dilution resulting in a 50% neutralization rate was  
328 defined as the neutralizing antibody titer.

329

330 **SARS-CoV-2 Spike protein Western blot.** Maternal blood and cord blood were diluted in  
331 RNeasy lysis buffer in 1:1.3 ratio, placenta was preserved in RNeasy lysis buffer. Protein lysates were obtained from  
332 samples using RIPA buffer (150 mM NaCl, 25 mM Tris-HCl (pH 7.4), 1% NP-40, 0.5% sodium  
333 deoxycholate, 0.1% sodium dodecyl sulfate) containing Halt™ protease inhibitor cocktail  
334 (ThermoScientific). Cell Lysates were resolved by SDS/PAGE on a Bis-Tris methane 4–12%  
335 polyacrylamide gel and transferred to a nitrocellulose membrane, blocked with 5% skimmed

336 milk diluted in PBS, an incubated overnight at 4°C with anti-SARS-CoV-2 Spike mouse mAb  
337 (1A9, GeneTex) or anti-GAPDH rabbit polyclonal antibody (GTX100118, GeneTex) respectively  
338 diluted 1:1,000 or 1:5,000 in blocking buffer. The membrane was washed in PBS buffer  
339 containing Tween-20 (0.1%) and then incubated for 1 h with horseradish peroxidase-conjugated  
340 anti-mouse and anti-rabbit secondary antibody (Jackson ImmunoResearch) diluted respectively  
341 1:5,000 and 1:10,000. The membrane was thoroughly washed, and proteins visualized using  
342 Immobilon Forte Western HRP substrate (Millipore).

343

344 **SARS-CoV-2 Spike mRNA PCR.** Maternal blood and cord blood were diluted in RNAlater in  
345 1:1.3 ratio, placenta was preserved in RNAlater. Tissues were kept at -80°C until analyzed.  
346 RNA was isolated from samples using the RNeasy Micro or Mini Kit (Qiagen) according to  
347 manufacturer's protocol. RNA concentration was measured using nanodrop and all samples had  
348 >30 ng/ul total RNA. 500ng RNA was transcribed into cDNA using qScript cDNA synthesis kit  
349 (Quantabio). Primers were design to detect the vaccines mRNA (mRNA-1273 Moderna and  
350 BNT162b2 Pfizer-BioNtech) as previously described<sup>36</sup>. Forward primer:  
351 AACGCCACCAACGTGGTCATC. Reverse primer: GTTGTTGGCGCTGCTGTACAC. Primers  
352 were shown to detect samples containing as low as 1.5 pg of vaccine using vaccine standard  
353 curve (Table S2). QuantaStudio 6 Flex (Applied Biosystems) instrument and SsoFast EvaGreen  
354 supermix (Bio-Rad) were used for PCR reaction: 30 second 95°C followed by 40 cycles of 5  
355 second 95°C and 20 seconds 60°C. All samples were run in triplicate as 20 µL reactions, and Ct  
356 values corresponding to <1.5 pg of vaccine based on standard curve (Table S2) were  
357 interpreted as a negative result. For vaccines cDNA standard curves, 10000 pg/µL vaccine  
358 mRNA (as cDNA) sample was used for serial dilution in 1:3 ratio, up to 0.06 pg/µL. Two µL of  
359 these diluted samples were used in each well to create standard curves.

360

361 **PhIP-Seq/VirScan Coronavirus phage display assay**

362 Immunoprecipitation of phage-bound patient antibodies

363 Maternal plasma at delivery and cord plasma were evaluated by PhIP-Seq/Virscan Coronavirus  
364 phage display. Construction of the Coronavirus PhIP-Seq library and detailed methods for  
365 immunoprecipitation, sequencing and bioinformatic processing of data are identical to what has  
366 previously been described<sup>18</sup>. For the purposes of the analysis conducted in this study, analysis  
367 was restricted to sero-reactivity against the SARS-CoV-2 Spike protein. As previously  
368 described, a total of two rounds of amplification and selection were performed for all PhIP-Seq  
369 analyses.

370

371 Next Generation Sequencing library prep

372 Amplicon sequencing library preps were performed using the Labcyte Echo 525 and an Integra  
373 Via Flow 96 and were identical to what has previously been described<sup>18</sup>. All libraries were  
374 pooled by equal volume, cleaned and size selected using Ampure XP beads at 1.0X per  
375 manufacturer's protocol. Libraries were quantified by High Sensitivity DNA Qubit and quality-  
376 checked by High Sensitivity DNA Bioanalyzer. Sequencing was then performed on a NovaSeq  
377 S1 (300 cycle kit with 1.3 billion clusters) aiming for sequencing depths of at least 1 million  
378 reads per sample.

379

380 Bioinformatic Analysis of PhIP-Seq Data

381 Sequencing reads were aligned to a reference database of the full viral peptide library using the  
382 Bowtie2 aligner. For all VirScan libraries, the null distribution of each peptide's log<sub>10</sub>(rpK) was  
383 modeled using a set of 95 pre-pandemic, healthy control sera. All counts were augmented by 1  
384 to avoid zero counts in the healthy control sera samples. Multiple distribution fits were examined  
385 for these data, with the Normal distribution showing the best fit. These null distributions were  
386 used to calculate p values for the observed log<sub>10</sub>(rpK) of each peptide within a given sample.  
387 The calculated p values were corrected for multiple hypothesis using the Benjamini-Hochberg

388 method. Any peptide with a corrected  $p$  value of  $< 0.001$  was considered significantly enriched  
389 over the healthy background. To identify regions targeted by host antibodies, all library peptides  
390 were aligned to the SARS-CoV-2 reference genome. Using the aligned position of the  
391 significantly enriched peptides which aligned full-length against the reference, we determined  
392 the proportion of individuals (mothers and infants) that were reactive at each residue of the  
393 Spike protein. All plots were generated using the R ggplot2 package.

394

#### 395 **Statistical analysis:**

396 Statistical analyses were performed using PRISM v9.2 (GraphPad), STATA 16 (StataCorp), and  
397 R version 3.6.3 and R Studio version 1.1.447. Descriptive statistics include mean, standard  
398 deviations, and ranges for continuous variables. The Wilcoxon rank-sum test was used for two-  
399 group comparisons of continuous variables including maternal pre- and post-vaccine antibody  
400 responses. Associations between continuous variables were assessed using Spearman's rank  
401 correlation ( $R_s$ ) including comparisons between maternal, cord and infant follow-up antibody IgG  
402 and neutralizing titer responses, and timing of vaccination. Two-sided  $p$  values were calculated  
403 for all test statistics, and  $p < 0.05$  was considered significant. PhIP-Seq/VirScan bioinformatics as  
404 detailed above.

405

#### 406 **Data Availability**

407 The data set generated during and/or analyzed during the current study are available from the  
408 corresponding author on reasonable request.

409

#### 410 **Acknowledgements:**

411 M.P. was supported by the National Institutes of Health (NIAID K23AI127886), the Marino  
412 Family Foundation, and UCSF REAC award. Y.G. was supported by the Weizmann Institute of  
413 Science -National Postdoctoral Award Program for Advancing Women in Science, and of the



414 International Society for Research in Human Milk and Lactation (ISRHML) Trainee Bridge Fund.  
415 Y.M. and W.C.G. were supported by The Roddenberry Foundation. S.L.G. was supported by  
416 the National Institutes of Health (NIAID K08AI141728), and the Bill and Melinda Gates  
417 Foundation (INV-017035), and a generous gift from the Kryzewski Family.

418

419 We thank all the mothers and infants that participated in this study. We thank Kenneth Scott,  
420 BS, RPh, (UCSF Health Pharmacy, University of California, San Francisco) and Hannah J.  
421 Jang, PhD, RN, PHN, CNL (UCSF School of Nursing, University of California, San Francisco),  
422 for voluntarily providing unused vaccine for this study, and to Dr. Margaret Feeney (University of  
423 California, San Francisco) and Dr. Nadav Ahituv (University of California, San Francisco) for  
424 support of these experiments.

425

426 **Author contributions:**

427 M.P. Helped conceive and design the project, oversaw recruitment, designed, and performed  
428 sample collection, oversaw experiment design, oversaw data analysis, provided funding, and  
429 drafted the manuscript.

430 Y.G. Recruited and consented enrollees, oversaw sample collection, designed, performed, and  
431 analyzed mRNA PCR experiments, performed data analysis.

432 A.G.C. Recruited and consented enrollees, oversaw sample collection, performed chart review,  
433 and helped draft the manuscript.

434 Y.M. Performed and helped design Western blot.

435 L.L. Performed and analyzed mRNA PCR experiments, performed sample collection.

436 B.A. Performed phage immunoprecipitation assays.

437 H.C. and U.J. performed and helped design critical experiments, and data collection.

438 C.Y.L., V.J.L., M.C., L.W., S.B. Performed and coordinated sample collection, and data collection.

439 V.J.F. Helped conceive and coordinate the project.

440 A.P.M. Provide funding.

441 W.C.G. Helped design western blot and oversaw data analysis.

442 A.H.B.W Designed and oversaw all serology experiments.

443 K.L.L. Designed and oversaw all neutralizing antibody experiments.

444 J.R. Designed, analyzed, and oversaw phage immunoprecipitation sequencing assays.

445 S.L.G. conceived and designed the project, oversaw recruitment, oversaw experiment design,

446 oversaw data analysis, provided funding, and helped draft the manuscript.

447 M.P., Y.G., Y.U., L.L., A.H.B.W, W.C.G, K.L.L., and S.L.G verified the underlying data.

448 All authors reviewed and approved the manuscript.

449

450

451

452

453

454

455

456

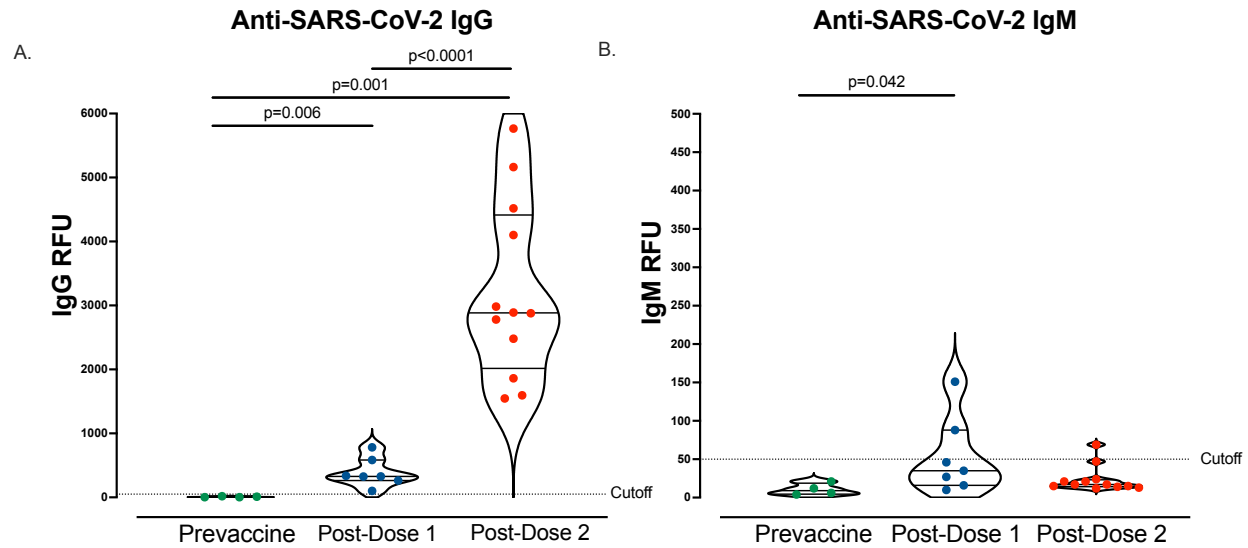
457

458

459

460

461



462

463 **Figure 1. Anti-SARS-CoV-2 IgG and IgM antibody responses following vaccination**

464 A. Maternal plasma anti-SARS-CoV-2 IgG antibody relative fluorescence units (RFU) levels

465 prior to vaccination (n=4), 3-4 weeks post-dose 1 (n=7), and 4-8 weeks post-dose 2 (n=12). B.

466 Maternal plasma anti-SARS-CoV-2 IgM (RFU) levels prior to vaccination (n=4), 3-4 weeks post-

467 dose 1 (n=7), and 4-8 weeks post-dose 2 (n=12). Wilcoxon rank-sum testing. Data represent

468 median  $\pm$  quartiles, two-sided *p* values were calculated for all test statistics.

469

470

471

472

473

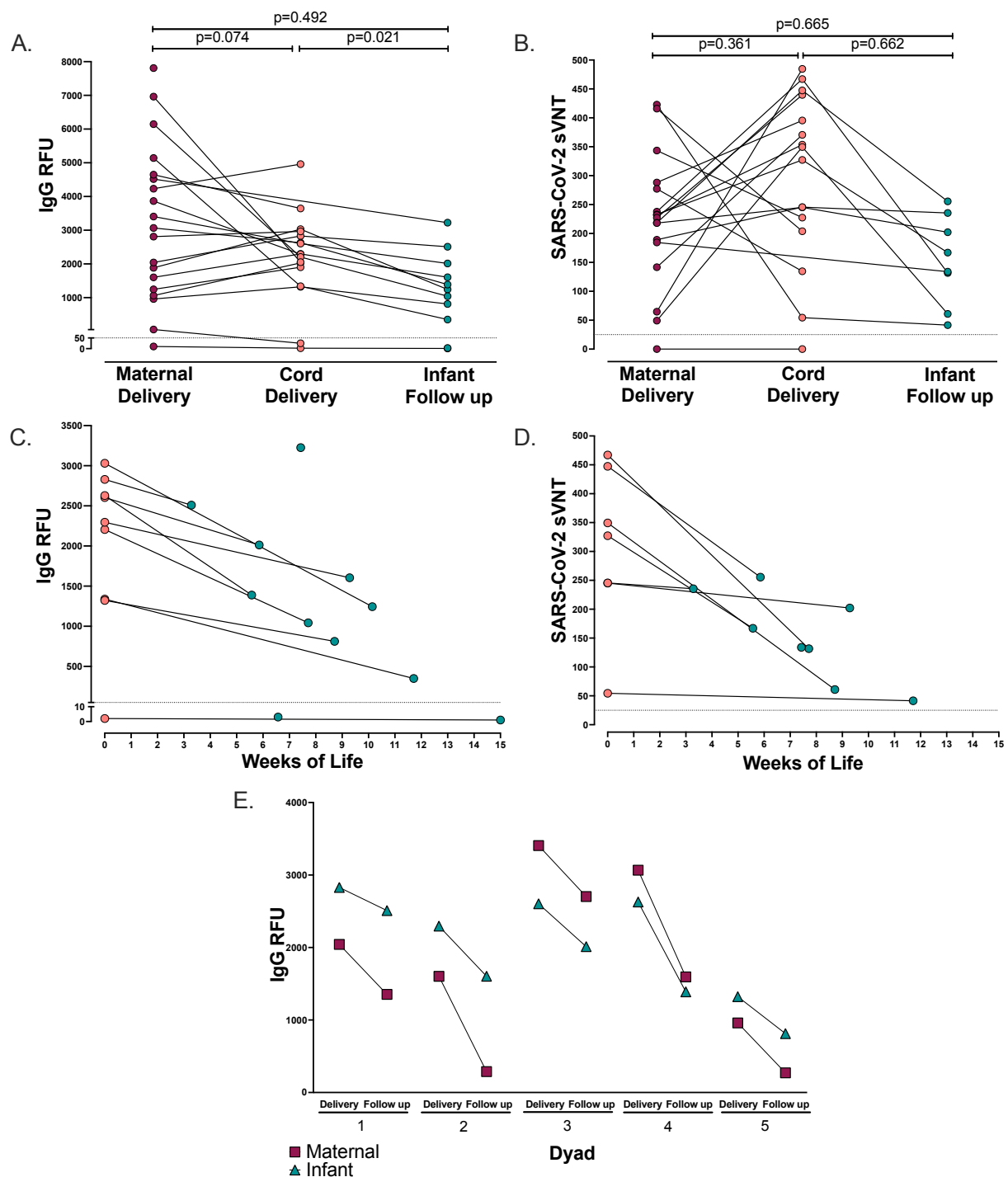
474

475

476

477

478



479

480 **Figure 2. Paired maternal, cord, and infant IgG and neutralization antibodies**

481 A. Paired maternal plasma at delivery (n=19), cord plasma (n=17), and infant follow-up (n=10)

482 by anti-SARS-CoV-2 IgG antibody relative fluorescence units (RFU), (Spearman's rank

483 correlation, dotted line indicates positive cutoff value of 50 RFU). B. Paired maternal plasma at

484 delivery (n=17), cord plasma (n=16), and infant follow-up (n=8) by SARS-CoV-2 label-free  
485 surrogate neutralization assay (sVNT), (Spearman's rank correlation, dotted line indicates  
486 positive cutoff value of 25). C. Paired cord plasma (n=9) and infant follow-up plasma (n=11)  
487 anti-SARS-CoV-2 IgG by weeks of life. D. Paired cord plasma (n=7) and infant follow-up plasma  
488 (n=8) label-free surrogate neutralization assay (sVNT) by weeks of life. E. Paired maternal  
489 plasma at delivery (n=5), cord plasma (n=5), and paired maternal follow-up (n=5) and infant  
490 follow-up plasma (n=5) anti-SARS-CoV-2 IgG. Two-sided  $p$  values were calculated for all test  
491 statistics.

492

493

494

495

496

497

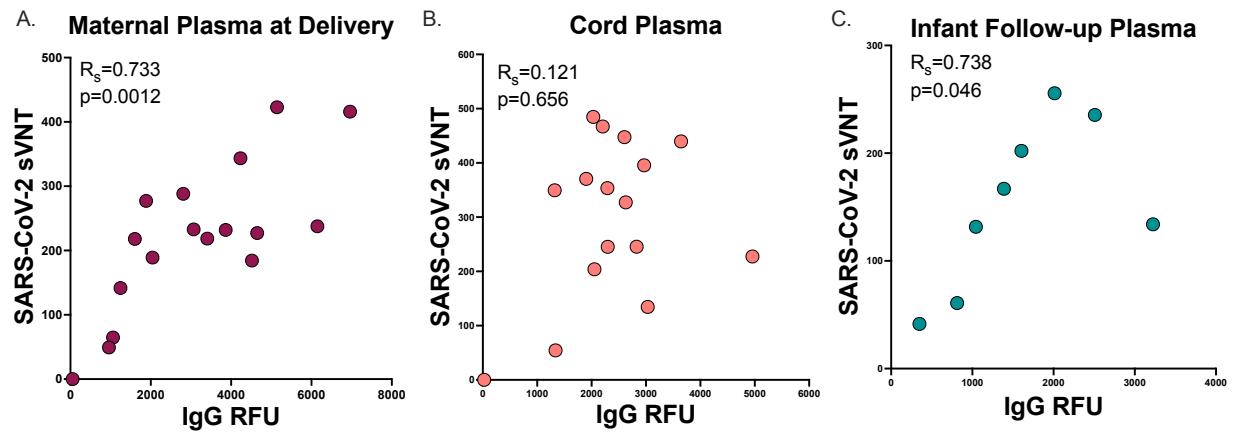
498

499

500

501

502



503

504 **Figure 3. Neutralization to IgG antibody correlation**

505 A. Maternal plasma at delivery (n=17) B. Cord plasma (n=16) C. Infant follow-up plasma (n=8)

506 SARS-CoV-2 label-free surrogate neutralization assay (sVNT) by anti-SARS-CoV-2 IgG

507 correlation (Spearman's rank correlation). Two-sided  $p$  values were calculated for all test

508 statistics.

509

510

511

512

513

514

515

516

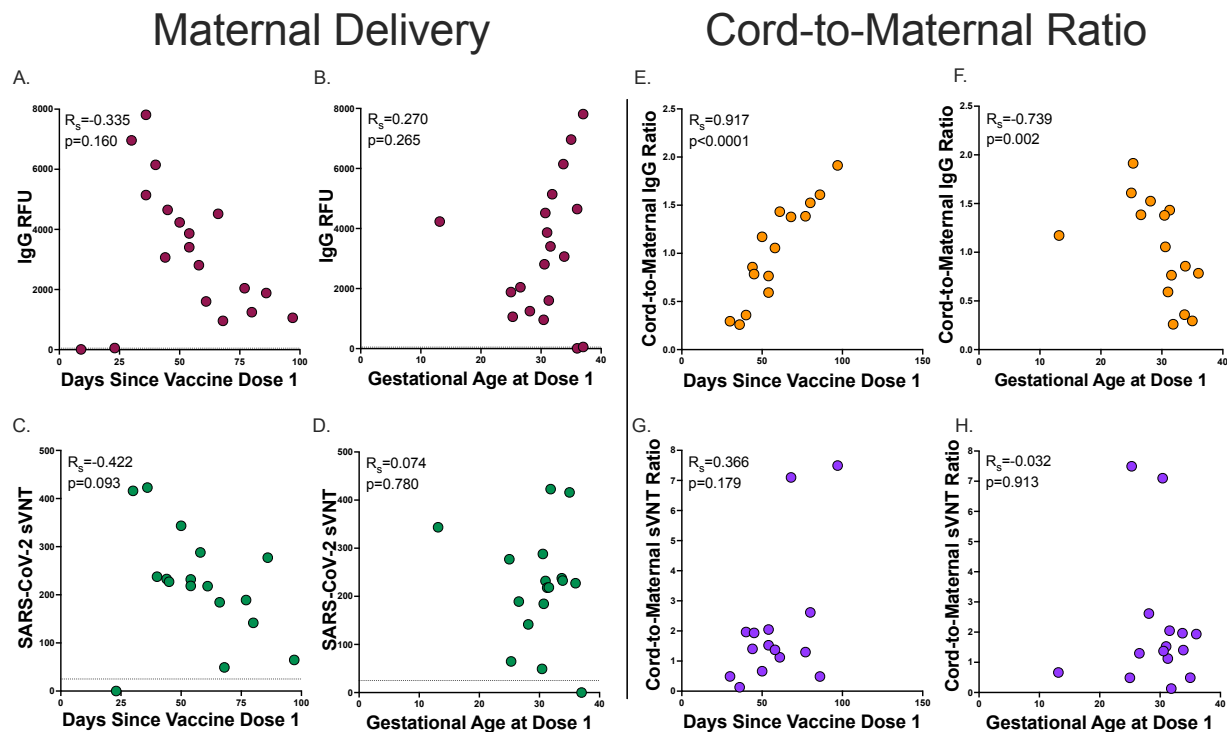
517

518

519

520

521



522

523 **Figure 4. Maternal delivery and Cord-to-maternal antibody transfer ratios timing**

524 A. Maternal delivery anti-SARS-CoV-2 IgG antibody transfer ratio by days since vaccine dose 1  
 525 (n=19, dashed line indicates positive cutoff >50 RFU) B. Maternal delivery anti-SARS-CoV-2  
 526 IgG antibody transfer ratio by gestational age at vaccine dose 1 (n=19, dashed line indicates  
 527 positive cutoff >50 RFU) C. Maternal delivery SARS-CoV-2 label-free surrogate neutralization  
 528 assay (sVNT) antibody transfer ratio by days since vaccine dose 1 (n=17, dashed line indicates  
 529 positive cutoff >25). D. Maternal delivery SARS-CoV-2 label-free surrogate neutralization assay  
 530 (sVNT) antibody transfer ratio by gestational age at vaccine dose 1 (n=17, dashed line indicates  
 531 positive cutoff >25) E. Cord-to-maternal anti-SARS-CoV-2 IgG antibody transfer ratio by days  
 532 since vaccine dose 1 (n=15) F. Cord-to-maternal anti-SARS-CoV-2 IgG antibody transfer ratio  
 533 by gestational age at vaccine dose 1 (n=15) G. Cord-to-maternal SARS-CoV-2 label-free  
 534 surrogate neutralization assay (sVNT) antibody transfer ratio by days since vaccine dose 1  
 535 (n=15). H. Cord-to-maternal SARS-CoV-2 label-free surrogate neutralization assay (sVNT)

536 antibody transfer ratio by gestational age at vaccine dose 1 (n=15). Two-sided  $p$  values were  
537 calculated for all test statistics.

538

539

540

541

542

543

544

545

546

547

548

549

550

551

552

553

554

555

556

557

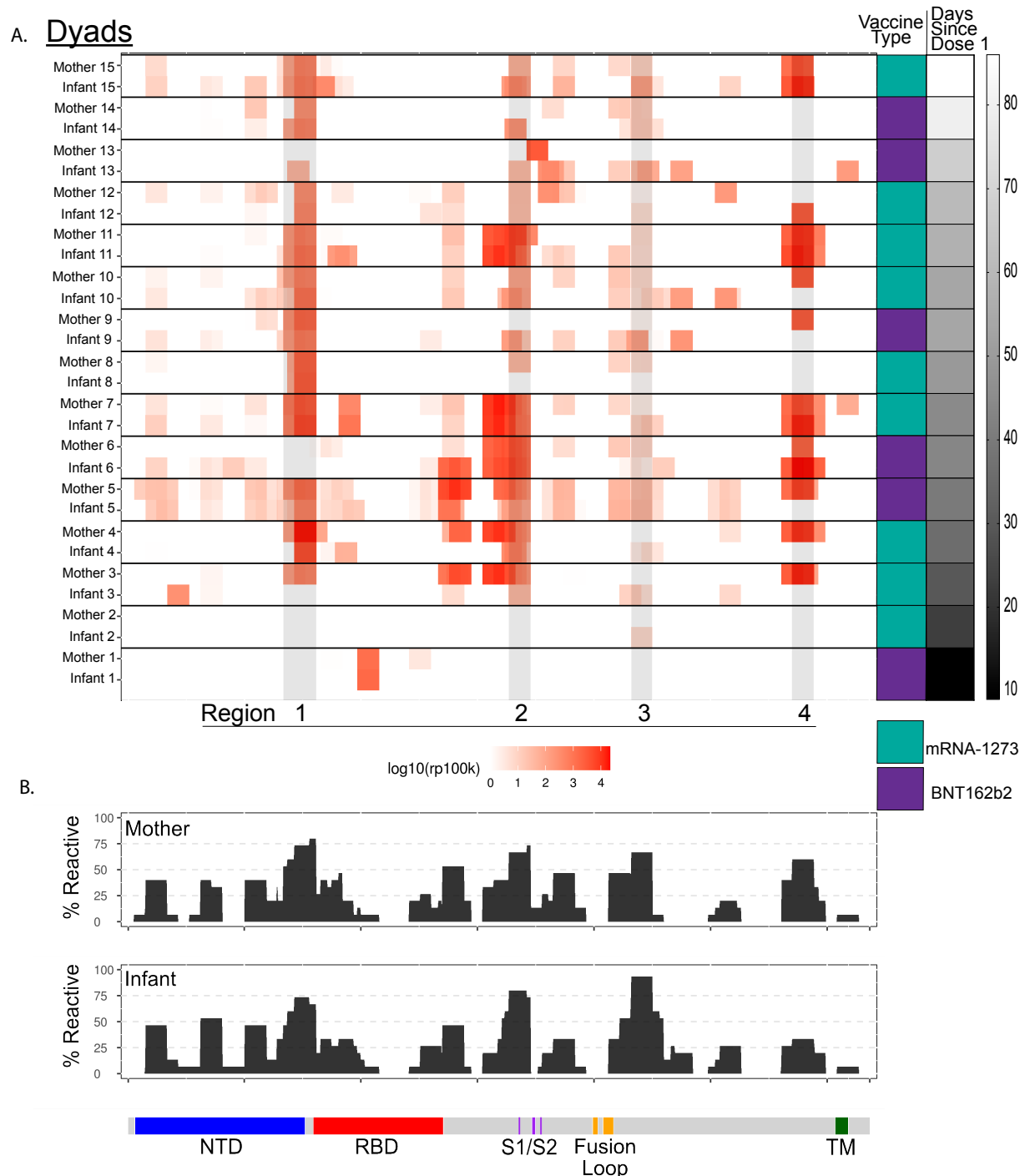
558

559

560

561





562 **Figure 5. PhIP-seq/VirScan paired maternal and cord SARS-CoV-2 Spike protein epitope**  
 563 **binding**

564 A. Heatmap displaying results of significant enriched ( $p < 0.001$ ) linear SARS-CoV-2 Spike  
 565 protein epitope binding from 15 paired mother-infant dyads in maternal plasma at delivery and  
 566 cord plasma by vaccine type and time since vaccine dose 1. Areas of high cumulative epitope

567 binding designated by regions 1-4. B. Cumulative fold enrichment of mothers and infants linear  
568 SARS-CoV-2 Spike protein epitope binding.  
569  
570  
571  
572  
573  
574  
575  
576  
577  
578  
579  
580  
581  
582  
583  
584  
585  
586  
587  
588  
589  
590  
591  
592

593 References:

- 594 1 Ellington, S. *et al.* Characteristics of Women of Reproductive Age with Laboratory-  
595 Confirmed SARS-CoV-2 Infection by Pregnancy Status - United States, January 22-June 7,  
596 2020. *MMWR Morb Mortal Wkly Rep* **69**, 769-775, doi:10.15585/mmwr.mm6925a1  
597 (2020).
- 598 2 Ahlberg, M. *et al.* Association of SARS-CoV-2 Test Status and Pregnancy Outcomes.  
599 *Jama*, doi:10.1001/jama.2020.19124 (2020).
- 600 3 Knight, M. *et al.* Characteristics and outcomes of pregnant women admitted to hospital  
601 with confirmed SARS-CoV-2 infection in UK: national population based cohort study. *Bmj*  
602 **369**, m2107, doi:10.1136/bmj.m2107 (2020).
- 603 4 Martinez-Portilla, R. J. *et al.* Pregnant women with SARS-CoV-2 infection are at higher  
604 risk of death and pneumonia: propensity score matched analysis of a nationwide  
605 prospective cohort (COV19Mx). *Ultrasound Obstet Gynecol* **57**, 224-231,  
606 doi:10.1002/uog.23575 (2021).
- 607 5 CDC. *COVID-19 vaccination among pregnant people aged 18-49 years overall, by*  
608 *race/ethnicity, and date reported to CDC - Vaccine Safety Datalink, \* United States,*  
609 <https://covid.cdc.gov/covid-data-tracker/#vaccinations-pregnant-women> (2021).
- 610 6 Gynecologists, A. C. o. O. a. *Statement of Strong Medical Consensus for Vaccination of*  
611 *Pregnant Individuals Against COVID-19*, [https://www.acog.org/news/news-](https://www.acog.org/news/news-releases/2021/08/statement-of-strong-medical-consensus-for-vaccination-of-pregnant-individuals-against-covid-19)  
612 [releases/2021/08/statement-of-strong-medical-consensus-for-vaccination-of-pregnant-](https://www.acog.org/news/news-releases/2021/08/statement-of-strong-medical-consensus-for-vaccination-of-pregnant-individuals-against-covid-19)  
613 [individuals-against-covid-19](https://www.acog.org/news/news-releases/2021/08/statement-of-strong-medical-consensus-for-vaccination-of-pregnant-individuals-against-covid-19)> (2021).

- 614 7 Maykin, M. M., Heuser, C., Feltovich, H. & with the Society for Maternal-Fetal Medicine  
615 Health Policy Advocacy, C. Pregnant people deserve the protection offered by SARS-  
616 CoV-2 vaccines. *Vaccine* **39**, 171-172, doi:10.1016/j.vaccine.2020.12.007 (2021).
- 617 8 Jackson, L. A. *et al.* An mRNA Vaccine against SARS-CoV-2 - Preliminary Report. *N Engl J*  
618 *Med* **383**, 1920-1931, doi:10.1056/NEJMoa2022483 (2020).
- 619 9 Polack, F. P. *et al.* Safety and Efficacy of the BNT162b2 mRNA Covid-19 Vaccine. *N Engl J*  
620 *Med* **383**, 2603-2615, doi:10.1056/NEJMoa2034577 (2020).
- 621 10 Atyeo, C. *et al.* Compromised SARS-CoV-2-specific placental antibody transfer. *Cell*,  
622 doi:10.1016/j.cell.2020.12.027 (2020).
- 623 11 Edlow, A. G. *et al.* Assessment of Maternal and Neonatal SARS-CoV-2 Viral Load,  
624 Transplacental Antibody Transfer, and Placental Pathology in Pregnancies During the  
625 COVID-19 Pandemic. *JAMA Netw Open* **3**, e2030455,  
626 doi:10.1001/jamanetworkopen.2020.30455 (2020).
- 627 12 Flannery, D. D. *et al.* Assessment of Maternal and Neonatal Cord Blood SARS-CoV-2  
628 Antibodies and Placental Transfer Ratios. *JAMA Pediatr*,  
629 doi:10.1001/jamapediatrics.2021.0038 (2021).
- 630 13 Atyeo, C. *et al.* Compromised SARS-CoV-2-specific placental antibody transfer. *Cell* **184**,  
631 628-642.e610, doi:10.1016/j.cell.2020.12.027 (2021).
- 632 14 Gray, K. J. *et al.* Coronavirus disease 2019 vaccine response in pregnant and lactating  
633 women: a cohort study. *Am J Obstet Gynecol* **225**, 303.e301-303.e317,  
634 doi:10.1016/j.ajog.2021.03.023 (2021).
- 635 15 Nir, O. *et al.* Maternal-neonatal transfer of SARS-CoV-2 immunoglobulin G antibodies  
636 among parturient women treated with BNT162b2 messenger RNA vaccine during

- 637 pregnancy. *Am J Obstet Gynecol MFM* **4**, 100492, doi:10.1016/j.ajogmf.2021.100492  
638 (2021).
- 639 16 Song, D. *et al.* Passive and active immunity in infants born to mothers with SARS-CoV-2  
640 infection during pregnancy: prospective cohort study. *BMJ Open* **11**, e053036,  
641 doi:10.1136/bmjopen-2021-053036 (2021).
- 642 17 Atyeo, C. *et al.* COVID-19 mRNA vaccines drive differential antibody Fc-functional  
643 profiles in pregnant, lactating, and non-pregnant women. *Sci Transl Med*, eabi8631,  
644 doi:10.1126/scitranslmed.abi8631 (2021).
- 645 18 Zamecnik, C. R. *et al.* ReScan, a Multiplex Diagnostic Pipeline, Pans Human Sera for  
646 SARS-CoV-2 Antigens. *Cell Rep Med* **1**, 100123, doi:10.1016/j.xcrm.2020.100123 (2020).
- 647 19 Shrock, E. *et al.* Viral epitope profiling of COVID-19 patients reveals cross-reactivity and  
648 correlates of severity. *Science* **370**, doi:10.1126/science.abd4250 (2020).
- 649 20 Li, Y. *et al.* Linear epitopes of SARS-CoV-2 spike protein elicit neutralizing antibodies in  
650 COVID-19 patients. *Cell Mol Immunol* **17**, 1095-1097, doi:10.1038/s41423-020-00523-5  
651 (2020).
- 652 21 Fenizia, C. *et al.* Analysis of SARS-CoV-2 vertical transmission during pregnancy. *Nat*  
653 *Commun* **11**, 5128, doi:10.1038/s41467-020-18933-4 (2020).
- 654 22 Zeng, H. *et al.* Antibodies in Infants Born to Mothers With COVID-19 Pneumonia. *JAMA*  
655 **323**, 1848-1849, doi:10.1001/jama.2020.4861 (2020).
- 656 23 Zeng, L. *et al.* Neonatal Early-Onset Infection With SARS-CoV-2 in 33 Neonates Born to  
657 Mothers With COVID-19 in Wuhan, China. *JAMA Pediatr* **174**, 722-725,  
658 doi:10.1001/jamapediatrics.2020.0878 (2020).

- 659 24 Healy, C. M. *et al.* Kinetics of maternal pertussis-specific antibodies in infants of mothers  
660 vaccinated with tetanus, diphtheria and acellular pertussis (Tdap) during pregnancy.  
661 *Vaccine* **38**, 5955-5961, doi:10.1016/j.vaccine.2020.06.050 (2020).
- 662 25 Sissoko, M. S. *et al.* Safety and efficacy of PfSPZ Vaccine against *Plasmodium falciparum*  
663 via direct venous inoculation in healthy malaria-exposed adults in Mali: a randomised,  
664 double-blind phase 1 trial. *The Lancet Infectious Diseases* **17**, 498-509,  
665 doi:10.1016/s1473-3099(17)30104-4 (2017).
- 666 26 Leuridan, E., Hens, N., Hutse, V., Aerts, M. & Van Damme, P. Kinetics of maternal  
667 antibodies against rubella and varicella in infants. *Vaccine* **29**, 2222-2226,  
668 doi:10.1016/j.vaccine.2010.06.004 (2011).
- 669 27 Pyzik, M. *et al.* The Neonatal Fc Receptor (FcRn): A Misnomer? *Front Immunol* **10**, 1540,  
670 doi:10.3389/fimmu.2019.01540 (2019).
- 671 28 Luo, Y. R., Yun, C., Chakraborty, I., Wu, A. H. B. & Lynch, K. L. A SARS-CoV-2 Label-Free  
672 Surrogate Virus Neutralization Test and a Longitudinal Study of Antibody Characteristics  
673 in COVID-19 Patients. *J Clin Microbiol* **59**, e0019321, doi:10.1128/jcm.00193-21 (2021).
- 674 29 Firan, M. *et al.* The MHC class I-related receptor, FcRn, plays an essential role in the  
675 maternofetal transfer of gamma-globulin in humans. *Int Immunol* **13**, 993-1002,  
676 doi:10.1093/intimm/13.8.993 (2001).
- 677 30 Williams, P. J. *et al.* Short communication: selective placental transport of maternal IgG  
678 to the fetus. *Placenta* **16**, 749-756, doi:10.1016/0143-4004(95)90018-7 (1995).
- 679 31 Kibe, T. *et al.* Glycosylation and Placental Transport of Immunoglobulin G. *Journal of*  
680 *Clinical Biochemistry and Nutrition* **21**, 57-63 (1996).

- 681 32 Borghi, S. *et al.* FcRn, but not FcγRs, drives maternal-fetal transplacental transport of  
682 human IgG antibodies. *Proc Natl Acad Sci U S A* **117**, 12943-12951,  
683 doi:10.1073/pnas.2004325117 (2020).
- 684 33 Palmeira, P., Quinello, C., Silveira-Lessa, A. L., Zago, C. A. & Carneiro-Sampaio, M. IgG  
685 placental transfer in healthy and pathological pregnancies. *Clin Dev Immunol* **2012**,  
686 985646, doi:10.1155/2012/985646 (2012).
- 687 34 Clements, T. *et al.* Update on Transplacental Transfer of IgG Subclasses: Impact of  
688 Maternal and Fetal Factors. *Front Immunol* **11**, 1920, doi:10.3389/fimmu.2020.01920  
689 (2020).
- 690 35 Chi, X. *et al.* A neutralizing human antibody binds to the N-terminal domain of the Spike  
691 protein of SARS-CoV-2. *Science* **369**, 650-655, doi:10.1126/science.abc6952 (2020).
- 692 36 Golan, Y. *et al.* Evaluation of Messenger RNA From COVID-19 BTN162b2 and mRNA-1273  
693 Vaccines in Human Milk. *JAMA Pediatr* **175**, 1069-1071,  
694 doi:10.1001/jamapediatrics.2021.1929 (2021).  
695