

Current state of the evidence on community treatments for people with complex emotional needs: a scoping review

Sarah Ledden*¹, Luke Sheridan Rains*², Merle Schlieff*², Phoebe Barnett^{2,3}, Brian Chi Fung Ching², Brendan Hallam^{1,4}, Mia Maria Günak^{2,5}, Thomas Steare², Jennie Parker⁶, Sarah Labovitch⁶, Sian Oram⁷, Steve Pilling^{3,8,9}, Sonia Johnson^{2,9}, and the CEN Mental Health Policy Research Group**.

*SL, LSR and MS are joint first authors

**List of group members: Alexandra Papamichail¹⁰, Ava Mason¹, Avithaa Thayaparan¹, Baihan Wang¹, Christian Dalton Locke², Jasmine Harju-Seppänen¹, Jiping Mo¹, Magdalena Tomaskova¹, Natasha Lyons², Spyros Spyridonidis¹, Tiffeny James¹, Zainab Dedat², Zoë Haime¹

1. Division of Psychiatry, University College London, London, UK
2. NIHR Mental Health Policy Research Unit, Division of Psychiatry, University College London, London, UK
3. Centre for Outcomes Research and Effectiveness, Research Department of Clinical, Educational and Health Psychology, University College London, London, UK
4. Centre for Outcomes Research and Effectiveness, Research Department of Clinical, Educational and Health Psychology, University College London, London, UK
5. Department of Psychology, Ludwig-Maximilians-Universität München, Munich, Germany
6. NIHR Mental Health Policy Research Unit Co-Production Group, University College London, UK
7. NIHR Mental Health Policy Research Unit, Department of Health Service and Population Research, NIHR Mental Health Policy Research Unit, King's College London, UK
8. National Collaborating Centre for Mental Health, Royal College of Psychiatrists, London, UK
9. Camden and Islington NHS Foundation Trust, London, UK
10. Health Service and Population Research Department, Section of Women Mental health, IoPPN, King's College London, London, UK

Funding statement

This paper presents independent research commissioned and funded by the National Institute for Health Research (NIHR) Policy Research Programme, conducted by the NIHR Policy Research Unit (PRU) in Mental Health (grant no. PR-PRU-0916-22003). The views expressed are those of the authors and not necessarily those of the NIHR, the Department of Health and Social Care or its arm's length bodies, or other government departments. The funders had no role in study design, data collection and analysis, decision to publish, or preparation of the manuscript.

Abstract

Background: Improving the quality of care in community settings for people with ‘Complex Emotional Needs’ (CEN - our preferred working term for services for people with a “personality disorder” diagnosis or comparable needs) is recognised internationally as a priority. Plans to improve care should be rooted as far as possible in evidence. We aimed to take stock of the current state of such evidence, and identify significant gaps through a scoping review of published investigations of outcomes of community-based psychosocial interventions designed for CEN.

Methods: We conducted a scoping review with systematic searches. We searched six bibliographic databases, including forward and backward citation searching, and reference searching of relevant systematic reviews. We included studies using quantitative methods to test for effects on any clinical, social, and functioning outcomes from community-based interventions for people with CEN.

Results: We included 226 papers in all (209 studies). Little relevant literature was published before 2000. Since then, publications per year and sample sizes have gradually increased, but most studies are relatively small, including many pilot or uncontrolled studies. Most studies focus on symptom and self-harm outcomes of various forms of specialist psychotherapy: most result in outcomes better than from inactive controls and similar to other specialist psychotherapies. We found large evidence gaps. Adaptation and testing of therapies for significant groups (e.g. people with comorbid psychosis, bipolar disorder, post-traumatic stress disorder or substance misuse; older and younger groups; parents) have for the most part only reached a feasibility testing stage. We found little evidence regarding interventions to improve social aspects of people’s lives, peer support or ways of designing effective services.

Conclusions: Compared with other longer term mental health problems that significantly impair functioning, the evidence base on how to provide high quality care for people with CEN is very limited. There is good evidence that people with CEN can be effectively helped when specialist therapies are available and they are able to engage with them. However, a much more methodologically robust and substantial literature addressing a much wider range of research questions is urgently needed to optimise treatment and support across this group.

Keywords:

Complex emotional needs; personality disorder; scoping review

Introduction

People who have received a diagnosis of “personality disorder” are reported to experience a range of difficulties with social functioning, mental and physical health [1, 2]. Substantial economic burdens are associated, especially due to treatment costs and productivity losses [3, 4]. Historically a “personality disorder” diagnosis was seen as indicating a lack of treatability [5]. More recently, there has been greater recognition of the needs for support and the provision of effective treatment for this group, and improving care has been identified as a priority in a variety of countries [6-9].

A heavy burden of stigma is associated with a “personality disorder” diagnosis, with negative views and discriminatory behaviour from some health professionals having especially immediate impacts [10-14]. We are sympathetic to the critique that the therapeutic nihilism and stigma accompanying a “personality disorder” diagnosis, and the lack of progress in delivering care that consistently helps rather than harms, are such that this diagnostic label - also criticised on grounds of validity - is now best left behind. Further work is needed on assessing and describing the difficulties that people who may receive this diagnostic label experience in more useful and acceptable ways: pending this, we prefer the term complex emotional needs (CEN) as a working description of the difficulties experienced by people who may receive a “personality disorder” diagnosis, and therefore use it as our headline description in this paper, as in our other publications on this topic. We are guided especially by members of our research team who have relevant lived experience in making this choice. However, the literature we have reviewed for the most part is based on “personality disorder” diagnoses of various types: thus, below we use this term where it is used in the papers included in our review.

Mental health services and mental health research are widely acknowledged not to have achieved parity in terms of resources and status with physical health care, and services for people with a “personality disorder” diagnosis are doubly disadvantaged as they appear to significantly lag behind services for people with other long-term mental health conditions [6, 15-17]. Recurrently reported difficulties include large variations in accessibility and quality of services, difficulty accessing specialist “personality disorder” services and lack of therapeutic interventions outside them, a tendency for interventions to focus narrowly on self-harm rather than on the broader range of psychological and social outcomes that service users and carers identify as important, lack of focus on trauma experiences even though are very frequent, and exclusion from care of people with common comorbidities such as substance misuse or bipolar disorder, or at the younger or older end of the age range [10, 17-20].

Internationally, service user activists, professional bodies and policy makers have advocated for better quality services for people with CEN [15-17]. Ideally, service improvement should be rooted in evidence-based practice [21, 22]. A number of systematic reviews have reported on the trial literature on psychological interventions for people with a borderline personality disorder, including Dialectical Behaviour Therapy (DBT), Mentalisation Based Therapy (MBT), Cognitive Behavioural Therapy (CBT), and psychodynamic therapies, amongst others [23-25]. Reviews tend to conclude that these specialist treatments are all more effective than treatment as usual in achieving clinical improvements in self-harm and “borderline symptoms”, although no single intervention type has emerged as dominant [26].

However, these relatively narrowly focused systematic reviews have left unanswered a range of questions that are key to improving care holistically for the full spectrum of people who have received a “personality disorder” diagnosis, or have comparable needs [26]. Questions not addressed include how to improve important social outcomes including employment, social inclusion, relationships and parenting, and the impact the interventions have on the trauma histories that are very frequent among this group should be addressed. These previous reviews have also not focused on the needs of important groups, such as older adults and younger people, people with comorbidities such as substance misuse, psychosis or bipolar disorder, and people who may have received “personality disorder” diagnoses other than borderline or emotionally unstable, or who have received multiple diagnoses. The key question of service design, and what kinds of teams and networks of services most effectively meet needs and deliver continuity of care also remains largely unanswered.

Given these crucial gaps in the evidence to underpin improvement of care, our intention in the current scoping paper was to cast the net widely, seeking any quantitative evidence that may have potential as building block for future intervention and service design and research in this area. Our aim was to conduct a scoping review of the evidence on the effectiveness of community-based psychological interventions designed for people with CEN. In order to capture a broad range of relevant evidence, we aimed to include in our searches a broad range of diagnoses and related difficulties, interventions focused not only on self-harm and symptoms but also on social targets, and delivered at team and catchment area as well as individual levels. Observational studies can yield helpful evidence on treatment outcomes in naturalistic settings, sometimes providing pointers to interventions worth researching through randomised trials or allowing questions to be addressed, such as about area-level service design, that are difficult to investigate through trials [27]: we thus aimed also to capture evidence from such designs. We also aimed to identify preliminary investigations of feasibility and reports on adaptations of interventions to new populations or new settings, as these have potential to inform further research and intervention development. Therefore, by considering this broader evidence base, we aim to take stock of what is known so far, highlight important gaps, and inform future research in this area.

Methods

Study Design

We conducted a systematic scoping review [28, 29] to map the evidence from studies using a range of quantitative designs on community-based treatments for CEN and to identify gaps in the literature.

Search Strategy:

The current review was part of a programme of work commissioned from the National Institute for Health Research Mental Health Policy Research Unit to inform policy on services for CEN. This programme of work included evidence reviews and studies of stakeholder views and experiences, and was supported by a working group that included people with relevant lived experience of using services and clinicians from a range of disciplines and service contexts.

The programme included four individual systematic reviews, for which we used a single overall search strategy, developed in collaboration with the working group of researchers, clinicians, and people with relevant lived experience. This review follows the PRISMA guidelines [30] and the protocol was prospectively registered on PROSPERO (CRD42019143165). The protocol for the wider programme of work was also registered on PROSPERO (CRD42019131834). The original protocol encompassed a meta-analysis of quantitative data, however, the extent and heterogeneity of important literature led to a decision to conduct such analyses on a more limited subset of data. This will be reported in a separate paper, and meta-syntheses of the qualitative evidence have also been conducted [10, 20, 31].

We conducted a comprehensive search of MEDLINE, Embase, HMIC, Social Policy and Practice, CINAHL and ASSIA, from database inception to December 2019. Search terms included terms relating to CEN, community/outpatient setting, and psychological or psychosocial treatments. An update search was conducted in November 2020. The search strategy was supplemented with a reference search of relevant systematic reviews following the original and updated search. Forward and backward citation searches using Web of Science were also performed for all included papers. No limits were placed on the language or country. Details of the search strategy are available in Appendix 1.

Study selection:

All titles and abstracts were independently screened, with 10% double checked by a second researcher. Studies not meeting inclusion criteria were excluded. Subsequently, full-text articles were screened according to the specific inclusion criteria for this review by two researchers. Unclear cases and disagreements were resolved through discussion with the wider research team.

Selection criteria:

Studies were included if they met the following criteria:

Participants: Adults (operationalised as 90% of the sample over 16 years old or mean sample age of 18 or over) in which a majority (>50%) had received a diagnosis of “personality disorder”. In order not to exclude studies in which authors wished to avoid use of this diagnostic term, or which focused on participants who had not received a formal diagnosis, we also ran searches using search terms intended to capture difficulties comparable to those experienced by people with a “personality disorder” diagnosis, including searches for samples presenting with repeated self-harm or suicide attempts, complex trauma or complex post-traumatic stress disorder (PTSD), and emotional dysregulation or instability. Clinical members of the team were consulted to achieve a consensus on the inclusion of such papers, although the large majority of the included papers did involve participants identified by a “personality disorder” diagnosis.

Interventions: Treatments with a primary focus on ‘personality disorder’ or associated needs, including psychotherapeutic treatments and service models, conducted in a community mental health care setting, or delivered to participants living in the community during treatment.

Controls: All comparators were considered (randomised and non-randomised), and we also included before and after study designs with no specific comparator group and studies in which the primary aim was uncontrolled preliminary testing of a new or newly adapted intervention.

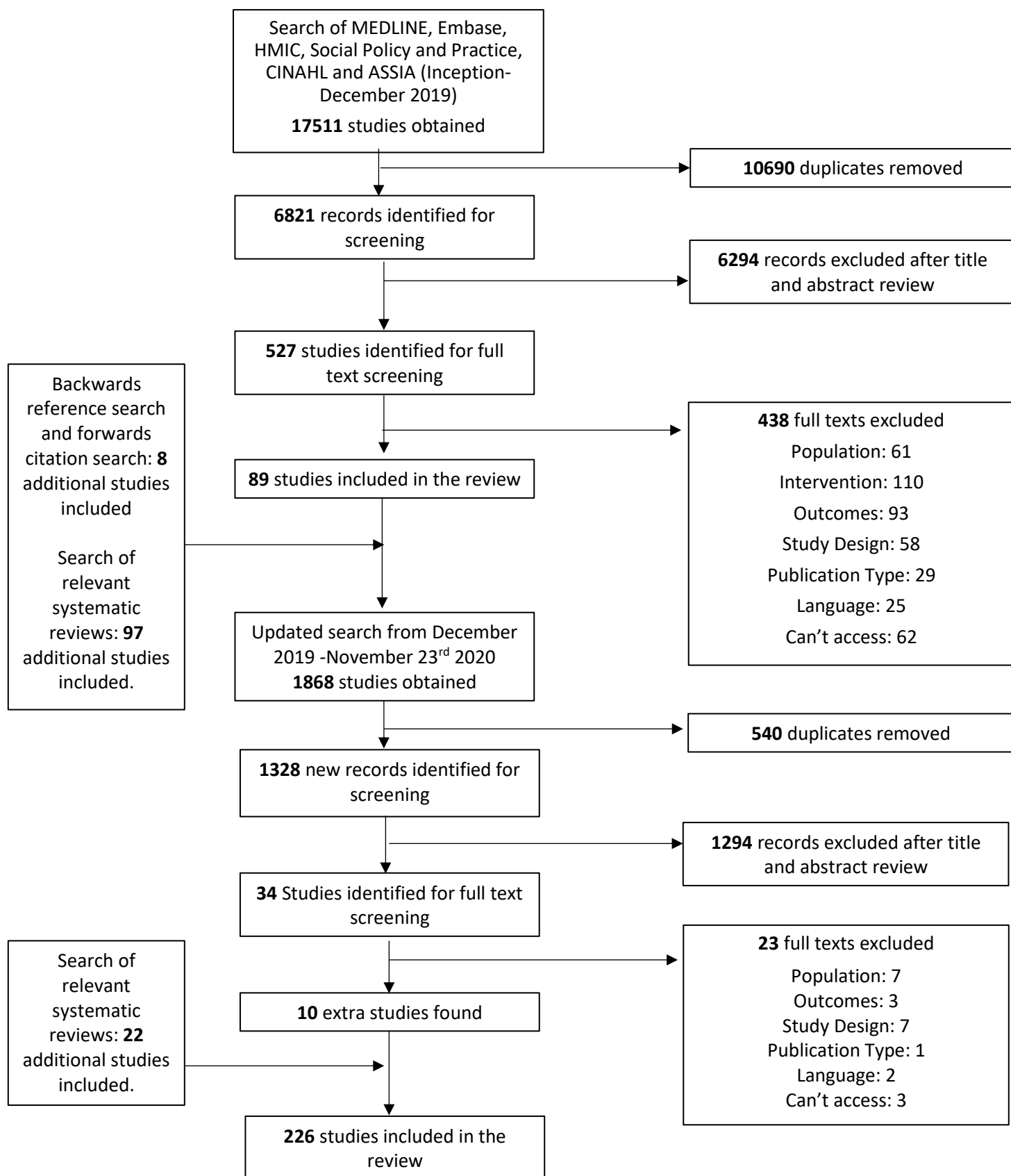
Outcomes: Any measure of global clinical or symptom severity; psychiatric hospitalisation or emergency hospital presentations; self-harm or suicide-related outcomes; quality of life or general wellbeing; general, occupational, or social functioning (including interpersonal relations).

Study design: Quantitative studies, including randomised and non-randomised comparison studies and non-controlled studies with pre-post comparisons.

We excluded studies whose primary focus of treatment was not “personality disorder” diagnoses or comparable needs, or if the treatment was conducted in forensic, crisis care, or inpatient care settings. We also excluded theses and conference abstracts. Given the very broad nature of our searches, for feasibility we included only studies published in English. The full search and screening process is depicted in Figure 1.

Figure 1

PRISMA Diagram



Data extraction and synthesis

Data was extracted using a standardised extraction form and 10% was double checked for accuracy. Disagreements or errors were resolved by discussion with the team and corrected where required. Data extracted included study aims, study design, treatment and comparator details, sample characteristics and size, outcome measures, and study results. To present extracted data, papers were grouped by treatment modality, treatment/comparator category, and study design category. Treatment modality categories included: 1) DBT; 2) Cognitive and behavioural therapies; 3) MBT; 4) psychodynamic therapy; 5) schema therapy; 6) mixed modality psychotherapy; 7) other individual psychotherapy modalities; 8) Social or functional orientated therapy; 9) tests of service models or service re-organisation; 10) self-management or care planning; 11) family, couple, or parenting therapies. Treatment/comparator categories included: 1) non-active/treatment as usual comparator; 2) specialist or active comparator; 3) test of a modified version of the intervention; 4) test of a therapy adapted to a particular population. Study designs were categorised as follows: 1) Randomised Controlled Trials (RCTs) (noting where the study is clearly described as a pilot); 2) observational studies, including non-randomised controlled studies, and studies making pre-post comparisons within the same cohort; 3) Intervention development studies.

In keeping with guidance for scoping reviews, we did not carry out quality appraisal, but have placed a greater emphasis on more robust designs in our reporting.

Results

Searches of bibliographic databases returned a total of 17,511 papers of which 5,385 papers were duplicates. After screening 6,821 titles and abstracts, reviewers screened 527 full texts. 438 papers did not meet our inclusion criteria and were excluded, resulting in 88 studies included in the review. Ninety-six additional studies were identified by searching relevant systematic reviews and eight studies through reference and citation searches. The search was updated on 23/11/2020 obtaining 1,868 records. After screening 34 full texts, 10 additional studies were included in the scoping review. Overall, we identified 226 papers for inclusion (Figure 1), reporting data from 210 distinct trials.

Intervention types

Tables 1-5 provide a summary of included studies, and a detailed description of individual papers is presented in appendices 2-5. There have been more studies of DBT (Table 1, Appendix 2) than any other therapy modality or community-based treatment in this group (n= 66). We found 49 papers reporting studies of Cognitive and behavioural therapies (Table 2, Appendix 3), six of schema therapy (Table 2, Appendix 3), 54 of psychodynamic therapy (Table 3, Appendix 4), 20 of MBT (Table 3, Appendix 4), ten of mixed modality psychotherapy (Table 4, Appendix 5), seven of other individual psychotherapy modalities (Table 4, Appendix 5), five of socially or functionally orientated therapy (Table 4, Appendix 5), six of self-management or care planning (Table 4, Appendix 5), and 13 tests of novel mental health service models (Table 4, Appendix 5).

Included papers were published between 1989 and 2020. As shown in Figure 2, there has been a progressive increase in papers over this time, with both the number of RCTs and other study designs

increasing from a very small number per year in the 1990s, to 10-20 per year from 2010 onwards. As shown by Figure 3, studies testing psychodynamic therapy were the most frequent until 2005, with studies of Cognitive and behavioural therapies and DBT becoming the most prevalent in the last 15 years. There has also been an increase in the number of studies evaluating mixed therapeutic approaches over time. However, the number of studies exploring service models has remained very low (n=13; 2010 to 2019) (see Table 4).

Figure 2
Number of Papers by Year

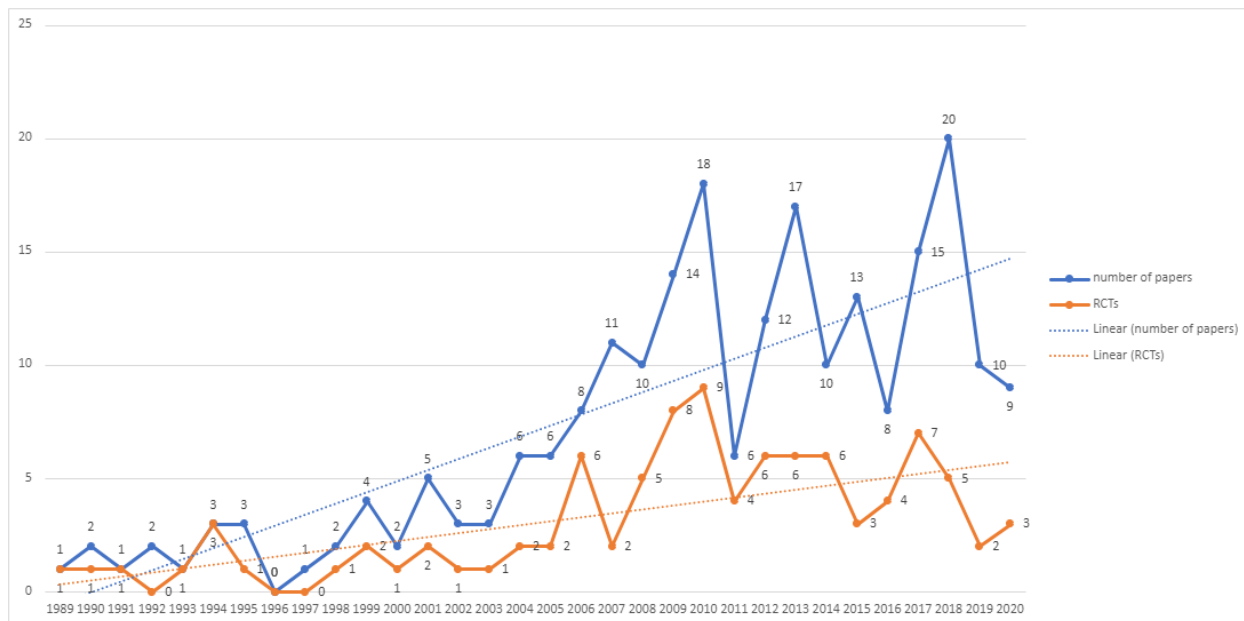
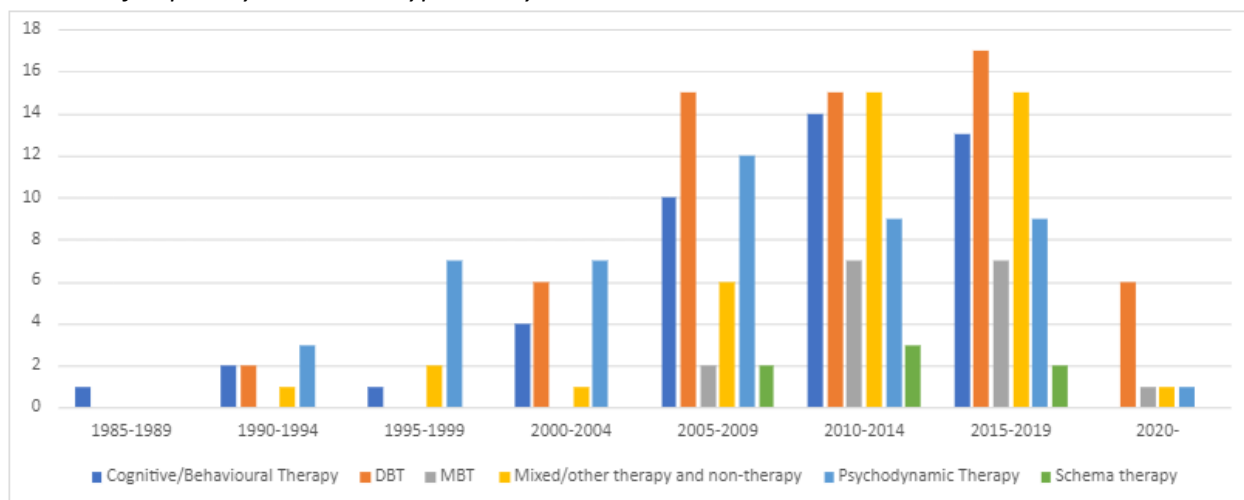


Figure 3
Number of Papers by Treatment Type and by Year

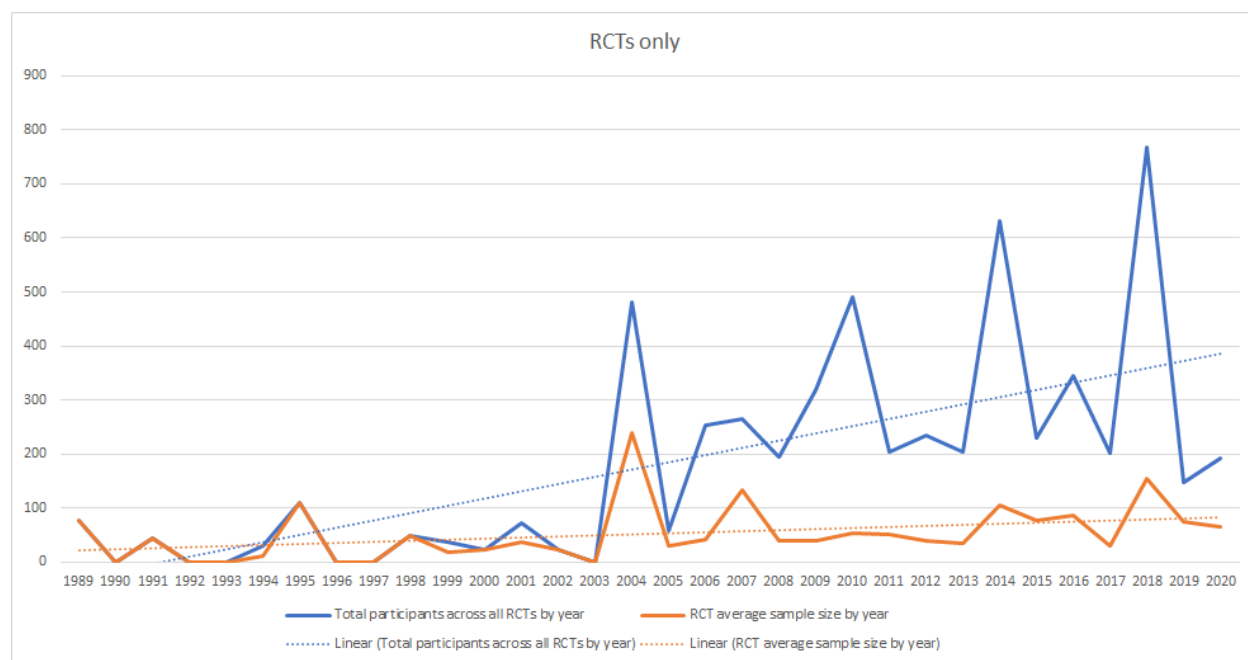


Locations of interventions

Studies were conducted in a range of countries across Asia (n=5), Europe (European countries other than the UK) (n=95), North America (n=59), Oceania (n=21), and the UK (n=44). Two studies were conducted in two different continents. DBT studies made up around half of all studies conducted in North America (n=26) and Oceania (n=9), but a much smaller proportion in Europe (n=21), the UK (n=7), and Asia (n=3). Cognitive and behavioural therapies and schema studies made up around a third or more of studies in Asia (n=2) and the UK (n=15), but a lower proportion in Europe (n=21), North America (n=13), and Oceania (n=3). One Cognitive and behavioural therapy study was conducted in both Europe and North America. Psychodynamic and MBT therapies also made up a third or more of studies in the UK (n=13) as well as in Oceania (n=7) and Europe (n=36), but a lower proportion elsewhere (Asia n=1; North America n=15). Two psychodynamic studies were conducted in multiple continents. Studies exploring other types of treatment were mainly conducted in Europe (n=20), followed by the UK (n=10), North America (n=9), and Oceania (n=2). Study sample sizes varied from five to 9,614, and as shown in Figure 4, these have generally increased over the last 30 years. Overall, around half to two thirds of studies of each therapeutic modality had samples between 20 and 100. Cognitive and behavioural and schema therapy studies were generally smaller (samples <20=16/55; >100=9/55), and psychodynamic and MBT therapies were larger (samples <20=3/74; >100=22/74). As shown in Figure 4 sample sizes of RCTs have also risen during this period. The mean sample size rose from 55.3 (SD=35.7) between 1990 and 1999 to 97.4 (SD=98.1) between 2010 and 2019.

Figure 4

Sample Sizes of Randomised-Controlled Trials by Year



Outcomes

Overall, “borderline personality disorder” (BPD) was the most studied condition, with 128 studies (57%) including samples that are partially or wholly given a diagnosis of “BPD”, followed by studies including participants with a mixture of “personality disorder” diagnoses (n=79, 35%). Fourteen (6%) studies did not have “personality disorder” as an inclusion criterion, but used inclusion criteria that in the judgement of the team, including clinicians, appeared to encompass similar difficulties, for example focusing on repeated self-harm or suicide attempts, complex trauma or PTSD, and emotional dysregulation or instability. These studies were included in an attempt to capture studies relevant to people with CEN in which investigators had decided not to use the “personality disorder” label as a primary way of identifying participants. “BPD” was the most studied diagnosis across treatment types, except for psychodynamic therapies and other therapies, where the largest category was studies in which participants had a mixture of “personality disorder” diagnoses. Most samples of studies that reported the sex or gender and/or ethnicity of participants were mostly female and white with thirty-nine studies including only women and thirteen studies only white participants. One study included a 100% male sample. The remaining studies included mixed samples or did not report sex or gender and/or ethnicity.

96 out of 126 studies had specified primary outcomes, including 21/65 studies on DBT, 10/20 studies on MBT, 23/54 studies on psychodynamic therapy, 24/49 studies on Cognitive and behavioural therapy, 5/6 studies on schema therapy, and 20/41 studies on other treatment. The most studied outcomes were improvement in overall symptom severity (approximately N=106), personality symptoms/functioning/diagnosis (approx. N=113), as well as other symptoms, such as anxiety, depressive, or PTSD symptoms (approx. N=115). Other commonly examined outcomes were social functioning and interpersonal symptoms and problems (approx. N=88), self-harm, suicide attempts and suicidality (approx. N = 87), service use, such as crisis service use and length and number of hospitalisations (approx. N=66), as well as quality of life (approx. N=44) and general functioning (approx. N=48). Approximately 145 studies also examined a range of other outcomes.

Table 1: DBT

DBT interventions: findings

Table 1 and Appendix 2 summarise studies investigating the effectiveness of DBT (n=66), of which the largest group was RCTs (n=27), followed by uncontrolled studies making only pre-post comparisons (n=24), non-randomised studies with contemporaneous comparators (including quasi and natural experiments) (n=6), uncontrolled intervention development studies (n=8), and one implementation study.

Thirteen studies involved comparisons with an inactive or non-specialist treatment control, such as treatment as usual (TAU) or waitlist. Results of these studies with inactive/non-specialist comparators showed that in RCTs (n=12) and one non-randomised trial with a contemporaneous comparator (Dynamic Deconstructive Psychotherapy), DBT was superior only on some outcomes compared to controls. 6/12 of said RCTs identified primary outcomes, including self-harm, symptoms such as “BPD” symptoms, global distress, and hospital admission. DBT was superior compared to comparators on some

of these primary outcomes (see Table 1). In one non-randomised study with contemporaneous comparators, DBT showed significantly greater improvement on the primary outcome “BPD” symptoms compared to treatment as usual (TAU), but less improvement than with Dynamic Deconstructive Psychotherapy (DDP). Sample sizes ranged from 20 to 100 for studies with primary outcomes that compared DBT with inactive/non-specialist comparators.

For studies comparing DBT with other forms of specialist psychotherapy, including General Psychiatric Management, Community Treatment by Experts, Comprehensive Validation Therapy plus 12 step programme, and clinical case management (n=8), DBT was not superior to comparators on the majority of outcomes in RCTs (n=6) and non-randomised studies with contemporaneous comparators (n=2). For studies with specified primary outcomes, DBT showed similar or less improvement in self-harm and suicidality compared to controls in 3/4 RCTs, but was superior to Community Treatment by Experts on suicide attempts in the fourth RCT. Three of these RCTs had sample sizes greater than 100.

Nineteen studies investigated partial or modified DBT therapies. In these studies, DBT was superior to comparators on some outcomes in RCTs (n=6), including three RCTs with sample sizes greater than 100 and one pilot RCT, but inferior to controls on outcomes in one non-randomised trial with a contemporaneous comparator. No study that investigated partial or modified DBT therapies had both a specified primary outcome and a control group (n=19).

Across studies reporting pre-post-treatment comparisons but no comparison with a control group (n=31), participants improved over time on all or almost all outcomes.

DBT interventions: Adaptions to specific populations

Seven of the above studies focused on delivery of DBT to samples defined other than solely by a “personality disorder” diagnosis, including investigations of outcomes of DBT for individuals with a “BPD” diagnosis and comorbid severe mental illness (n=1) or substance use disorder (n=2). Four DBT studies used criteria other than “personality disorder” diagnosis, including emotional dysregulation (n=1), parasuicidal behaviours in the past six months (n=1), and severe difficulty in functioning together with frequent suicide attempts (n=1) or crisis service use (n=1). These studies included one RCT, one intervention development study and five studies involving only pre-post comparisons.

Additionally, a total of eight studies examined the effectiveness of DBT adapted for specific clinical or demographic populations. Adapted DBT treatments included DBT-PTSD (n=2) and DBT with prolonged exposure for people with comorbid PTSD (n=1), DBT for people with comorbid eating disorders (n=1), DBT for young adults aged 18 to 25 years (n=2), mother-infant DBT for female primary caregivers of children younger than 3-years-old (n=1), and couples DBT for 18-50-year-old married men (n=1). The studies included RCTs (n=3) including one pilot RCT), intervention development studies (n=2), and non-randomised studies with contemporaneous comparators (n=2) or only making pre-post (n=1) comparisons. In one RCT including 193 participants, DBT-PTSD was superior to Cognitive Processing Therapy (CPT) for participants with complex PTSD and a history of childhood abuse, on the primary outcome, PTSD diagnosis. Additionally, DBT was superior to CBT on some primary outcomes in one non-

randomised controlled study including 118 participants. DBT was superior to controls on all non-primary outcomes across RCTs (n=3) and most non-primary outcomes across non-randomised controlled studies (n=2): sample sizes for these studies without specified primary outcomes varied from 11 to 37.

Table 2: Cognitive and behavioural and Schema therapies

Cognitive and behavioural and Schema interventions: Findings

Table 2 and Appendix 3 present study characteristics and findings of Cognitive and behavioural and schema therapies (n=55). There were 26 RCTs, 17 uncontrolled intervention development studies, three non-randomised studies with contemporaneous controls and nine uncontrolled studies making only pre-post-treatment comparisons.

Nineteen studies had inactive/non-specialist comparators. In RCTs (n=19 including 4 pilot studies), compared to inactive/non-specialist controls, participants receiving Cognitive and behavioural or schema therapy showed improvement on some outcomes. 12/19 RCTs had specified primary outcomes, with sample sizes ranging from 34 to 480. Cognitive and behavioural or schema therapy was superior compared to controls on primary outcomes in some studies, including for “personality disorder” symptoms (n=3), “recovery” (n=1) and symptom severity and social functioning in 1/2 RCTs. Cognitive and behavioural or schema therapy was not superior for primary outcomes in other studies, including for depressive or (social) anxiety symptoms, and service use and/or self-harm (see Table 3).

In studies making only pre-post comparisons with no control groups (n=23), participants showed improvement on almost all outcomes over time.

In studies with specialist treatment comparators, including Rogerian Supportive Therapy, Transference-Focused Therapy, Dynamic psychotherapy, group-based CBT, individual Cognitive-Evolution Therapy, Mindful Emotion Awareness and Cognitive Reappraisal, and different treatment settings (n=7), Cognitive and behavioural therapy was inferior to or showed similar improvements to control treatments for all outcomes in RCTs (n=4) and non-randomised studies with contemporaneous comparators (n=3). This included the results of three RCTs and two non-randomised studies with contemporaneous controls with specified primary outcomes (“BPD” symptoms, symptom severity, personality functioning and interpersonal problems). Sample sizes of studies with primary outcomes ranged from 46 to 205.

Lastly, three RCTs, including one pilot RCT, examined modifications of Cognitive and behavioural or schema therapies. These interventions were not superior to comparators on any outcomes. One RCT found no difference between schema therapy with and without phone support on “BPD” recovery as a primary outcome. This was also the case for a Manual-Assisted Cognitive Therapy (MACT) with and without a therapeutic assessment intervention. One RCT investigating a cognitively-based problem-solving treatment delivered at home obtained mixed findings on the primary outcome recovery from “BPD”. The 2/3 RCTs with identified primary outcomes included 20 and 62 participants.

Cognitive and behavioural and schema treatments: Adaptions to specific populations

Of the above studies ten examined the effectiveness of Cognitive and behavioural treatments for clinical populations with “personality disorder” diagnoses and comorbid mental health problems, or individuals without a formal “personality disorder” diagnosis but CEN. These studies looked at individuals with

experiences of childhood sexual abuse (n=1), “BPD” symptoms and comorbid substance use disorder (n=1), (longstanding or treatment-resistant) mood disorder or chronic adjustment disorder and a comorbid “personality disorder” or “BPD” diagnosis (n=3), non-suicidal self-injury (NSSI) disorder (n=1), previous and predicted suicide attempts (n=1), repeated self-harm (n=1), and a “BPD” or cluster B “personality disorder” diagnosis or transversal or longitudinal comorbidity (n=1). One study included participants with various diagnoses, including “personality disorder” diagnoses. Studies included RCTs (n=3), non-randomised trials with contemporaneous comparators (n=1) or pre-post comparisons (n=1), observational studies with contemporaneous comparators (n=1), intervention development or uncontrolled feasibility studies (n=2), single case studies (n=2).

Table 3: Psychodynamic and MBT studies

Psychodynamic and MBT interventions: Findings

Table 3 and Appendix 4 summarise studies investigating the effectiveness of MBT (n=20) and psychodynamic interventions (n=54). There were 25 RCTs, and 48 non-randomised studies, which included non-randomised studies with contemporaneous controls (n=17) and studies without control groups making only pre-post comparisons (n=31). One uncontrolled study focused on intervention development. Four RCTs compared MBT with an inactive/non-specialist treatment control (as did a non-randomised study comparing with a historical cohort). In the RCTs sample sizes ranged from 38-51 and MBT was superior to the control on most outcomes. Two RCTs specified primary outcomes, and MBT proved superior in reducing both “BPD” symptoms (n=1) and suicide attempts (n=1) compared to controls, though MBT did not reduce “BPD” symptoms more than DBT.

For studies comparing MBT with other forms of specialist treatment, including specialist TAU, supportive group therapy, structured clinical management, and DBT, (n=9), MBT showed no significant difference in most outcomes in three of four RCTs with sample sizes ranging from 95-111, with the fourth reporting greater improvements in the primary outcome of parasuicidal behaviours compared with structured clinical management. In non-randomised studies, results were mixed with few additional benefits of MBT reported. In primary outcomes, one study reported similar reductions in bed days to the specialist treatment comparator.

One RCT comparing MBT settings (sample size 114) found no differences on primary or secondary outcomes between MBT at a day hospital compared to an intensive out-patient MBT.

In seven MBT studies, pre-post-treatment comparisons were made without a control group: improvements were reported on most or all outcomes.

Thirteen studies on psychodynamic treatments had inactive/non-specialist comparators including six RCTs and seven non-randomised studies. Participants receiving psychodynamic therapy showed greater improvements compared to inactive/non-specialist comparators in the majority of outcomes in RCTs (which included sample sizes of 50-100 and <50 in two studies) and close to all outcomes in non-randomised studies with control groups. Improvement in the primary outcome was reported in 2/3 RCTs and all non-randomised studies who specified one compared to the comparator (see Table 3).

In studies with specialist comparators (n=11), including manual-based Psychiatric-Psychodynamic sessions, General Psychiatric Management, cognitive therapy, and Transference-Focused Therapy plus supportive treatment, the intervention group was superior compared to the control group only on some outcomes in RCTs (n=8), but most outcomes in non-randomised studies (n=3). Of those specifying primary outcomes, only 2/5 of RCTs (both with sample sizes <50) reported greater improvements in suicidality (n=1) or progress in therapy (n=1) than for other specialist treatments, and 1/2 non-randomised studies reported greater improvement in “personality disorder” symptoms for DDP compared to controls and DBT.

Participants improved on almost all or all outcomes over time in studies with pre-post designs (n=11).

Six non-randomised studies compared the outcomes of psychodynamic therapy delivered in different settings. There was no difference in outcomes in studies comparing day hospital, outpatient, and inpatient services, however, community and step-down services were superior to residential services on all outcomes, including the primary outcome of symptom severity in all three studies with an identified primary outcome. Lastly, participants receiving adapted psychodynamic treatments showed greater improvement compared to controls on most outcomes, including the primary outcomes of “BPD” severity or parasuicide behaviour in RCTs (n=2) and one non-randomised study with a contemporaneous control.

Psychodynamic and MBT interventions: Adaptions to specific populations

Of the above studies, six looked at adaptations for specific populations including for individuals with poor personal, social and/or interpersonal functioning with or without “personality disorder” diagnosis (n=4), “personality disorder” diagnosis with or without comorbid alcohol use disorder (n=1), and treatment-resistant depression with comorbid “personality disorder” diagnoses and histories of early childhood trauma (n=1). These studies included one RCT and five studies with pre-post comparisons.

Additionally, a total of three studies examined the effectiveness of psychodynamic treatments that were adapted to specific clinical or demographic populations, including two RCTs investigating interventions adapted for people with a “BPD” diagnosis and active alcohol use or dependence and one non-randomised trial with a contemporaneous comparator adapted to people with a “BPD” diagnosis in an underserved community-based outpatient setting. Compared to controls, the intervention group was superior on the majority of outcomes, including all primary outcomes (“BPD” symptom severity, parasuicidal behaviour, alcohol misuse and institutional care) identified in the two RCTs, which both included 30 participants.

Table 4: Other studies

Other interventions: Findings

Table 4 and Appendix 5 present studies on any treatment type other than the psychotherapies listed above (n=41). These included studies of mixed therapeutic modalities (n=10), other individual therapies (n=7), social-interpersonal and functional therapies (n=5), self-management and care planning interventions (n=6), as well as studies investigating outcomes of different approaches to service design and delivery (n=13). Most studies were RCTs (n=25), while three studies made comparisons with contemporaneous control groups, and 13 only pre/post comparisons.

In RCTs with inactive/non-specialist comparators examining mixed therapeutic modalities, the intervention group was superior to controls on most outcomes (n=3), including the primary outcomes drop out and suicide attempts, but not “BPD” symptoms of the two RCTs with identified primary outcomes.

Compared to controls, participants receiving individual therapies other than the psychotherapies listed above (including Art therapy, Abandonment psychotherapy, Body Awareness Group therapy, short-term psychotherapy, and psychoeducation) showed greater improvements in close to all outcomes in RCTs with inactive/non-specialist comparators (n=5 including one pilot RCT). However, in the two RCTs with specified primary outcomes Abandonment psychotherapy was superior to control for suicidal relapse and hospitalisation (n=1), but psychoeducation was not superior to control for “BPD” severity (n=1). Other individual therapies were not superior to controls in two RCTs with specialist treatment comparators, including Abandonment psychotherapy delivered by nurses instead of trained psychotherapists, Transference-Focused Therapy and DBT, on all outcomes including primary outcomes. Sample sizes of RCTs with primary outcomes ranged from 50 to 170.

Similar results were found for social and interpersonal interventions, with the intervention group being superior compared to controls on up to half of the outcomes in RCTs with inactive/non-specialist comparators (n=3). Additionally, the intervention group was superior on primary outcomes in only 1/2 RCTs with identified primary outcomes: Psychoeducation plus problem-solving therapy showed greater improvement in social functioning and social problem-solving skills compared to waitlist, however, the cognitive rehabilitation and psychoeducation groups improved similarly in general functioning. RCTs with primary outcomes included 70 and 176 participants. There were no between-group differences found in RCTs with specialist comparators, including delayed Functional Imagery Training and Social Skills Training in the clinic/hospital only (n=2 including one pilot RCT).

RCTs on self-management and care planning compared to self-management (n=2) or established generic or specialist mental health services (n=1) found no between-group differences on outcomes. This included the primary outcomes of two RCTs: The Joint Crisis Plan group and TAU group had similar rates of self-harm in one RCT including 88 participants. The second RCT with a sample size of 52 found no difference in service admissions in Nidotherapy enhanced assertive outreach compared to standard assertive outreach.

Regarding service design models, one RCT comprising four papers comparing step-down treatment with outpatient treatment showed no between-group differences on outcomes, including a range of primary outcomes (see Table 4). In the other RCT, the step-down intervention group was superior compared to the outpatient group on half of the outcomes. Lastly, two RCTs with samples >100 examining novel mental health service models compared to established generic or specialist mental health services found the intervention group to be superior on most outcomes compared to the control group, but on primary outcomes related to service use only in 1/2 RCTs.

Across treatment types, participants improved on most or all outcomes over time in studies with pre-post comparisons (see Table 4).

Other treatments: Adaptions to specific populations

Six of the above studies on other treatments examined specific populations, including three RCTs, one non-randomised study with a contemporaneous control, and one uncontrolled study making only pre-post comparisons. One RCT compared the effectiveness of Abandonment psychotherapy and intensive TAU for individuals with major depression and a comorbid “BPD” diagnosis. Another RCT investigated a joint crisis plan and TAU for young people without a “personality disorder” diagnosis but at least two episodes of self-harm in the previous three months. A third RCT compared the effectiveness of Nidotherapy and TAU for individuals with severe mental illness and a comorbid “personality disorder” diagnosis. One non-randomised study examined collaborative care management and TAU for individuals with major depression with or without a comorbid “personality disorder” diagnosis. Lastly, an uncontrolled study investigated emotion regulation skills training for a community-based sample of individuals with adverse childhood experiences over time.

Discussion

Our scoping review collated quantitative evidence regarding community-based psychological, psychosocial, and service level interventions designed for people with CEN. Most studies focused on people given a “personality disorder” diagnosis, with a small number relating to people who appeared to have comparable difficulties (6%). Some observations may be made from this literature, but large gaps are prominent.

What *does* the literature tell us?

We identified 226 papers reporting on 210 distinct studies carried out in a range of countries, the majority in Europe or North America. The largest group of studies evaluated the effectiveness of DBT, followed by psychodynamic therapy, Cognitive and behavioural therapy, MBT, and schema therapy. Research on psychological treatments dominated, with only a small handful of studies using any method to investigate interventions with primarily social targets, self-management, care planning or models of service delivery.

The total quantity of studies, given the breadth of the search and inclusion of uncontrolled studies and studies with very small samples, is small. Little literature was published in the 20th century, with most included studies published after 2005, since when annual publication rates have slowly risen. This may reflect to reflect a shift internationally away from the view of “personality disorder” as untreatable and justifying exclusion from mental health services that prevailed in the 20th century [32]. In the early 2000s, factors including the publication of trials that held out prospects for successful treatment, service user activism, and key policy documents such as the UK’s “Personality Disorder: No longer a diagnosis of exclusion” may have contributed to greater confidence that research in this area is potentially fruitful [6, 33, 34]. However, stigma, therapeutic pessimism and difficulty accessing any kind of helpful care are still widely reported [10-12, 20, 35]. The results of our searches suggest that investment in large well-designed studies that test clear primary hypotheses has remained very limited around the world, which may reflect a continuing lack of optimism, and the impacts of the particularly severe stigma that appears associated with CEN.

The evidence base that has been established thus far relates mainly to specialist psychotherapies, delivered especially to people with a “BPD” diagnosis. Many studies are small and/or non-randomised, but studies with any methodology have tended to suggest benefits for specialist psychotherapies of a range of types compared with inactive/non-specialist controls, both in studies focused on people with a “BPD” diagnosis and with broader groups. However, results do not tend to suggest one kind of specialist treatment is clearly superior to another – this coheres with the results of more narrowly focused systematic reviews that do not identify a clear gold standard but suggest a variety of psychological treatments are helpful for those who engage with them [23, 26]: a focus on what works well for whom, and why, would be helpful in further work.

Contrary to the pessimistic outlook often reported regarding potential for improvement among people with a “personality disorder” diagnosis, a large majority of studies involving before and after comparisons find significant reductions in symptoms and self-harm as well as improvements in other outcomes. This seems to be the case across treatment types as well as diagnoses, often to the extent that a substantial minority of participants were assessed as no longer meeting criteria for a “personality disorder”. Study methods often made it hard to assess how far this was a result of treatments received, including those being investigated, and how far of the natural improvement in symptoms and difficulties (people may also tend to be recruited to studies at times when difficulties are especially severe). Findings from these studies suggest the value of uncontrolled studies and of before and after treatment comparisons is very limited except where the main purpose is to test the feasibility and acceptability of delivering an intervention: it appears likely that improvement will be found whatever interventions are offered.

Regarding specific populations such as those who are younger or older or who have some of the conditions that are frequently comorbid with CEN, such as substance misuse or psychosis, we found substantial numbers of interesting small studies, mainly aimed at intervention development, or establishing that treatments are feasible and acceptable in specific populations. These provide potential building blocks for further design and testing of interventions in important populations where substantial trials have yet to be reported.

What does the literature *not* tell us?

Gaps in the evidence needed to underpin high quality service delivery for people with CEN are large. Service users and clinicians report that mental health care systems appear ill-equipped to deliver accessible care of high quality [10, 15, 20], yet there are hardly any published investigations of the best approaches to designing teams and systems. Care planning, crisis planning, and self-management are to a large extent not investigated as applied to people with CEN. We identified very few studies of interventions with social targets, including employment and social relationships, even though people with CEN identify these as a priority [11, 36]. We found very little evidence of co-production or service user leadership in either research or intervention design, despite the benefits of these in producing research that aligns to service user needs and priorities [37]. We also found very little quantitative research on either trauma-informed care for this group, or interventions for people with comorbid PTSD, despite calls to place trauma at the centre of thinking about CEN [11, 35, 38].

Only a few studies evaluated treatments adapted to specific populations of interest, such as younger or older age groups, parents or patients with comorbid severe mental illnesses, substance misuse, or childhood trauma. As above, a number of small-scale initial studies appeared promising, but were limited by small sample sizes and/or observational or feasibility/intervention development study designs. Lack of more substantial evaluations of well-designed interventions for these groups who have tended to be still more under-served than others with CEN appears an important gap.

Most studies were conducted with participants with a “BPD” diagnosis, so that there is little evidence on effective interventions for people with other diagnoses, or who may have comparable difficulties but not have received a diagnosis. Samples are largely White and female samples with close to no papers focusing on diverse gender and sexual identities (despite some evidence of LGBTQ+ groups being more likely to receive a “personality disorder” diagnosis [39, 40]), or other ethnicities. Studies generally measured effectiveness of interventions by examining improvement in whether diagnostic criteria continued to be met for “personality disorder”, symptom outcomes, self-harm, and service use. However, outcomes prioritised by service users such as personal achievements, employment, and social connections were reported much less [36], and the possibility of iatrogenic harm was also rarely examined. Interventions addressing social needs are especially important in the light of findings of longitudinal studies showing that while symptoms and suicidal behaviour tend to improve with time, this is less the case for psychosocial functioning including rate of employment [41, 42]. Implementation studies examining how to embed successful interventions in real-world settings were also largely absent.

Limitations

Despite the breadth of our approach, the findings of the present review must be considered in light of several limitations. In order to provide an overview of evidence acquired so far and identify gaps, we have created broad, often heterogenous, categories of study designs. This approach is inevitably superficial and limits how far meaningful comparisons can be made across study types, treatments, and subpopulations. In keeping with scoping review methodology recommendations, we did not formally assess the quality of the studies, although we have commented on some obvious limitations, for example relating to small trial populations or uncontrolled study designs.

Additionally, while inclusion criteria were kept broad, and a variety of search terms applied to try to include studies with participants with any diagnosis of “personality disorder” as well as those with comparable difficulties, capturing the latter reliably is likely to have been particularly difficult, and only a small number of studies not based on such criteria were included. We also have not included many studies that are transdiagnostic or include mixed populations of mental health service users. Lastly, in order to make this very broad search feasible, we included only studies published in English and this may well have excluded some relevant evidence, although the number of studies excluded on grounds of language was small.

Conclusions

Our overall conclusion from this scoping review is that people with CEN, despite being numerous among community mental health service users [43] have thus far been poorly served by clinical research.

Mental health research is in general under-funded compared with other areas of health [44]. Our findings suggest that this is especially striking in the field of CEN, in which little was published prior to 2005 and the tally has increased only gradually subsequently, now only just exceeding two hundred quantitative studies including 96 RCTs of community and outpatient interventions, even including studies of any scale using any method.

Much therefore needs to be done to develop a robust evidence base in this area, especially beyond a narrow focus on specialist psychotherapies for people with a “BPD” diagnosis, where a substantial number of trials have resulted in a finding that several specialist therapies appear better than treatment as usual, but not in a clear finding that any treatment is clearly superior. Future research should address outcomes valued by patients rather than being limited to a focus on self-harm and symptoms: relevance to service users is much more likely to be achieved by the adoption of co-production in design of both interventions and research studies. The recent service user-led StopSIM campaign against the Serenity Integrated Monitoring intervention [45], which involved police in response to some people with frequent contact with emergency services, exemplifies the potential for iatrogenic harm from interventions that are unevaluated, or where the potential for harm has not been assessed. Research on important populations such as older and younger people and people with major comorbidities, and on interventions focusing on people with CEN as parents, partners or relatives needs to progress beyond the feasibility studies conducted so far. Larger and more diverse samples are needed to be confident of relevance across service user populations.

Models of service delivery have been largely neglected in research so far despite recurrent complaints from service users and clinicians that current systems are fragmented and inaccessible. Realist evaluations may shed a light on what mechanisms underly the effectiveness of different interventions as well as what type of intervention works for which patient group and in what context. Relevant contexts may be individual, such as personal life and stage of life, as well as systemic. Additionally, services need to deliver holistic and person-centred care that addresses service users’ interconnected needs and intersecting experiences over several years: large-scale observational designs may be helpful in understanding outcomes over longer periods [10, 11]. Lastly, patients and carers with relevant experiences need to be invited to co-produce the development and evaluation of treatments to not only ask the right questions but also examine these in a meaningful way.

Box1: Lived experience commentary written by Sarah Labovitch and Jennie Parker

In light of the Community Mental Health Framework (CMHFA), this review is well timed to revise thinking around what *should* be available to people who may meet the diagnostic criteria for “personality disorder”/CEN. It may also prompt researchers and service-providers to consider what is important to us - it was disappointing to see that only 44/226 studies reported on quality of life, whilst most primary outcomes focused on diagnostic-related criteria.

Time to follow-up in many studies discussed is limited. Side-effects of funding constraints typically lead to quantitative research and RCTs being prioritised. We agree with the question of what underlies reported improvements, and would say this is not just in relation to observational studies. It would be interesting to delve further into this.

Despite advancements in recent years, community service-provision for “personality disorder”/CEN is nevertheless lagging behind other areas of mental health. Treatment in the community must be patient-centred: adapted to factors such as age, culture, comorbidity, substance misuse and trauma. Some health professionals still display discriminatory attitudes towards CEN, or simply don’t know how to help. Finding a clinician with the right skills and compassion is depressingly arduous. Further, exclusion criteria and high thresholds can make “specialist” services inaccessible. Meanwhile, the notion of individuals actually having a choice in therapist is vanishingly slim, adding to the risk of iatrogenic harm and a “cliff-edge” of care. Services need to commit to consistent long-term contact, as well as tailoring treatment to individual needs.

As with others, we have experienced stigma, rejection, and repeated/inappropriate referrals. This paper leaves us with a conundrum, both in relation to the integrated approach proposed by the CMHFA and access to good and timely support. Whilst this is a scoping review of quantitative research, our recommendation is for further investigation into the active ingredients of therapy: what makes good outcomes for some but not others, the importance of the relationship, and whether we have a choice of therapist (considerate of age, culture, gender, etc) or of intervention. We also noted the limited research on peer support, compared to our experience of its value. With such a diverse population and diverse range of therapies (and variance within specific models), clearer guidance would be helpful so that we can all make fully-informed choices.

Main Results Tables

Table 1. DBT

Treatment	Study design	References	Number of studies	Sample size	Date of publication	Country of article	Cohort diagnoses and demographics	Main findings
DBT vs inactive/non-specialist	RCT	[46-57]	12	20-100 (n=12)	1990-1999 (n=2); 2000-2009 (n=4); 2010-2019 (n=6)	Asia (n=1); Europe (n=4); North America (n=4); Oceania (n=1); UK (n=2)	Diagnoses: "BPD" diagnosis (n=10); "personality disorder" diagnosis and self-harm (n=1); "BPD" criteria and self-harm (n=1). Demographics: 100% female (n=5); 50-79% (n=2) White.	On the primary outcomes of RCTs, compared to controls, participants receiving DBT showed improvement in self-harm in 2/3 studies that examined self-harm (in 1 study this was only the case for clinician-rated self-harm), symptoms at discharge (1/1), global distress (0/1), and hospital admissions (0/1). In 1 RCT, participants receiving DBT showed similar improvement in "BPD" symptoms compared to MBT (0/1), but greater improvement compared to participants receiving medication only (1/1). On other outcomes, compared to controls, participants receiving DBT showed improvement in self-harm and parasuicidal behaviour (3/5), suicidality (1/3), hospital admissions and service use at discharge (2/4), depressive symptoms (2/3), anxiety symptoms (1/2), hopelessness (1/2), alcohol consumption (1/1), quality of life (1/1), impulsive behaviour (1/1), anger (2/3) (in 1 study this was only the case for anger expression but not experience), emotion regulation (1/1), and social functioning (1/1), but not social adjustment (0/1), suicide attempts (0/2), or general symptoms (0/2). There were no or mixed findings for between-group differences for other outcomes (0/3). For some of these outcomes, differences were no longer significant at follow-up.

	Non-randomised experiments, observational studies, quasi experiment, and natural experiment with pre-post comparison	[58-72]	15	<20 (n=2); 20-100 (n=13)	2000-2009 (n=7); 2010-2019 (n=8)	Europe (n=5); North America (n=8); UK (n=1); Oceania (n=1)	Diagnoses: “BPD” or “emotionally unstable personality disorder” diagnosis (n=9); “BPD” diagnosis and self-harm (n=1); “BPD” diagnosis and substance dependence (n=1); “BPD” diagnosis and comorbid severe mental illness (n=1); “personality disorder” diagnosis (n=2); severe impairment and history of suicide attempts or crisis service use (n=1). Demographics: 100% female (n=5); 50-79% White (n=2), 80-99% White (n=5).	In a study with two control groups, the DBT group was inferior compared to Dynamic Deconstructive Psychotherapy (DDP) on the primary outcome “BPD” symptoms (0/1). Compared to DDP, DBT participants also showed less improvements in depressive symptoms, disability, and self-harm (1/1), but not suicide attempts (0/1). In studies without a control group, participants improved over time on the one reported primary outcome (service costs: 1/1) and on almost all secondary outcomes, including “personality disorder” symptoms (6/6) and other symptoms/distress (10/10; 6 domains), suicide ideation/attempts (4/5), self-harm (4/5), quality of life/wellbeing (3/3), functioning (3/3; 2 domains), inpatient service use (3/3), substance use (1/1), as well as emotional regulation and coping skills (3/3). Studies focusing on patients with comorbid severe mental illness, substance dependence, or an extensive history of suicide attempts or crisis service use all showed improvement in above-mentioned outcomes.
	Uncontrolled intervention development studies and single case study with multiple measures	[73-75]	3	<20 (n=1); 20-100 (n=2)	2000-2009 (n=1); 2010-2019 (n=2)	North America (n=3)	Diagnoses: “personality disorder” diagnosis (n=1); “BPD” diagnosis (n=1); severe impairment and history of suicide attempt or crisis service use (n=1). Demographics: 80-99% White	In 1 study with a primary outcome, participants with severe impairment and an extensive history of suicide attempts or crisis service use improved over time on employment rate and quality of life by treatment (DBT-Accepting the Challenges of Exiting the System) end, but this was no longer significant one year later. Across studies in this group, participants also improved on secondary/other outcomes: self-harm (2/2), service use (1/1),

							(n=2); 100% White (n=1).	depressive symptoms (1/1), and employment rate (1/1).
	Implementation studies	[76]	1	>100 (n=1)	2020 - (n=1)	Europe (n=1)	“BPD” or “emotionally unstable personality disorder” diagnosis (n=1). Demographics: no data reported.	In the 1 included study, which did not have a control group, participants improved over time on all self-reported outcomes, clinician-rated functioning, self-harming behaviour, and service use (1/1).
DBT vs specialist	RCT	[77-82]	6	20-100 (n=3); >100 (n=3)	2000-2009 (n=4); 2010-2019 (n=2)	North America (n=5); Oceania (n=1)	Diagnoses: “BPD” diagnosis (n=2); “BPD” diagnosis and self-harm (n=3); “BPD” diagnosis and opiate dependence diagnosis (n=1). Demographics: 100% female (n=1); 50-79% White (n=2), 80-99% White (n=1).	On the primary outcomes of 2 RCTs, compared to General Psychiatric Management, participants receiving DBT showed no improvement in suicide attempts, self-harm, and risk of suicidal episodes (0/2). On other outcomes, compared to General Psychiatric Management, participants receiving DBT showed no difference in service use (0/1), interpersonal functioning (0/1), quality of life (0/1), and other secondary outcomes (0/1). On the primary outcomes of 1 RCT with three active comparators, participants receiving DBT showed similar improvement in suicidality compared to Transferences-focused Psychotherapy and showed less improvement in anger and impulsivity (0/1) compared to Transference-focused Psychotherapy and supportive treatment. On the primary outcome of 1 RCT, compared to community treatment by experts, participants receiving DBT showed improvement in suicide attempts (1/1). On other outcomes, compared to CTBE, participants receiving DBT showed improvement in service use (1/1), but not in depression (0/1), quality of life (0/1), and suicidality (0/1). In 1 RCT focusing on patients with a “BPD” diagnosis and an opiate dependence diagnosis, compared to Comprehensive Validation Therapy plus

								12 step programme, participants receiving DBT showed no difference in opiate use (0/1), self-harm (0/1), functioning (0/1), and symptom severity (0/1). On outcomes in 1 RCT, compared to waitlist controls, participants receiving DBT showed greater improvement in suicidal and self-harm episodes (1/1), service use (1/1), depressive symptoms (1/1), anxiety symptoms (1/1), and symptom severity (1/1).
	Non-randomised experiments, observational studies, quasi experiment, and natural experiment with pre-post comparison	[83, 84]	2	20-100 (n=2)	2010-2019 (n=2)	Europe (n=1), UK (n=1)	Diagnoses: "BPD" diagnosis (n=2). Demographics: 50-79% White (n=1).	Participants in the DBT group showed no improvement compared to controls in the MBT group on the following outcomes: self-harm, "BPD" symptom severity, emotional regulation, relationships with others or dissociation (0/1). Participants in the combined DBT group showed no improvement compared to controls in the individual DBT group on outcomes including suicide (0/1), self-harm (0/1), and emergency visits (0/1).
DBT partial/modified	RCT	[85-90]	6 (1 pilot)	20-100 (n=6)	2000-2009 (n=1); 2010-2019 (n=5)	Asia (n=1); Europe (n=3); North America (n=2)	Diagnoses: "BPD" diagnosis (n=4); "BPD" diagnosis and self-harm (n=2). Demographics: 100% female (n=6); 50-79% White (n=2), 100% White (n=2).	In 1 RCT, there were no differences between DBT mindfulness and DBT-Interpersonal effectiveness in "BPD" symptoms (0/1), depressive symptoms (0/1), and anxiety symptoms (0/1). In 1 RCT, compared to the Cognitive Therapy Group (CTG), participants in the DBT Skills Training Group (DBT-STG) improved in BPD symptoms (1/1), suicidality (1/1), and emotional regulation (1/1), but not suicide attempts (0/1). In 1 RCT, compared to Interpersonal Effectiveness Skills Training, participants receiving Mindfulness training showed improvement in "BPD" symptoms (1/1), and mindfulness skills (1/1). In 1 RCT, compared to Client-Centred Therapy (CCT), participants receiving DBT showed improvement in self-harm and suicidality (1/1), impulsiveness and anger (1/1), depressive symptoms (1/1), symptom

							severity (1/1), but not anxiety symptoms (0/1). In 1 RCT there was no difference between participants receiving Loving-Kindness and Compassion Meditation and those receiving Mindfulness Continuation Training on most outcomes (0/1). In 1 RCT comparing standard DBT with DBT skills training (DBT-S) and DBT individual therapy (DBT-I), there were no between-group differences in frequency and severity of suicide attempts (0/1), suicidality (0/1), crisis service use (0/1), and reasons for living (0/1). Compared to DBT-I, standard DBT showed improvements in frequency of self-harm (1/1), depressive symptoms (1/1), and anxiety symptoms (1/1), but similar improvements (0/1) compared to DBT-S. Compared to DBT-I and DBT-S, standard DBT showed lower dropouts (1/1) and crisis service use at follow-up (1/1).
Non-randomised experiments, observational studies, quasi experiment, and natural experiment with pre-post comparison	[91-100]	10	<20 (n=2); 20-100 (n=6); >100 (n=2)	2000-2009 (n=4); 2010-2019 (n=2); 2020 - (n=4)	Europe (n=2); North America (n=3); Oceania (n=3); Republic of Ireland and Northern Ireland (n=1); UK (n=1)	Diagnoses: "BPD" diagnosis and/or experiencing emotional dysregulation (n=8); self-harm (n=1); "BPD" and self-harm (n=1). Demographics: 100% female (n=2); 80-99% White (n=1).	In 1 study with a control group, compared to standard DBT, participants in the DBT skills training group showed no improvement in "BPD" symptoms, symptom severity, and suicidality (0/1). In studies without a control group, participants improved over time on the primary outcome service use (1/1) and secondary outcomes: "Personality disorder" symptoms (2/3), other symptoms/distress (6/6; 5 domains), self-harm (1/1), service use (2/2; 2 domains), quality of life (1/1), functioning (1/4; 2 domains), and outcomes related to coping, emotional regulation, and skills use (2/4; 6 domains).
Uncontrolled intervention development studies and single case	[101-103]	3	<20 (n=2); 20-100 (n=1)	2000-2009 (n=1); 2010-2019 (n=2)	Europe (n=1); Oceania (n=2)	Diagnoses: "BPD" diagnosis (n=2); cluster B diagnosis (n=1).	In 3 studies, participants improved over time on following secondary/other outcomes: "BPD" symptoms (1/1), depressive symptoms (1/1), but not anxiety symptoms (0/1), quality of life

	study with multiple measures						Demographics: no data reported.	(1/1), services use (1/1), and other distress, coping and self-control outcomes (2/2; 4 domains).
DBT adapted	RCT	[104-106]	3 (1 pilot)	20-100 (n=2); >100 (n=1)	2010-2019 (n=2); 2020- (n=1)	Asia (n=1); Europe (n=1); North America (n=1)	Diagnoses: "BPD" diagnosis (n=1); "BPD" diagnosis/criteria and PTSD diagnosis (n=2). Demographics: 100% female (n=2); 80-99% White (n=1); 100% male, 18-50-year-olds and married (n=1).	On the primary outcomes of 1 RCT focusing on patients with comorbid PTSD, compared to Cognitive Processing Therapy (CPT), participants receiving DBT-PTSD showed improvement in diagnostic and symptom remission of PTSD (1/1). On other outcomes, compared to CPT, participants receiving DBT-PTSD were less likely to drop out early (1/1) and showed improvement in symptomatic remission and reliable recovery (1/1). In 1 RCT focusing on married men, compared to waitlist controls, participants receiving Couple-DBT showed improvement in BPD symptoms (1/1), 3/4 general mental health subscales (1/1), and 5 relationship satisfaction subscales (1/1). One RCT did not report significance results.
	Non-randomised experiments, observational studies, quasi experiment, and natural experiment with pre-post comparison	[107-109]	3	20-100 (n=2); >100 (n=1)	2010-2019 (n=3)	Europe (n=2); Oceania (n=1)	Diagnoses: "BPD" diagnosis (n=2); "BPD" and eating disorder diagnosis (n=1). Demographics: 100% female (n=2); only 18-25-year-olds (n=1); only primary caregivers of child younger than 3-years-old (n=1).	In 1 study focusing on patients with a comorbid eating disorder, compared to CBT, participants receiving DBT showed improvement on the following primary outcomes: dysfunctional behaviours (1/1), self-harm (1/1), but not suicide attempts (0/1), service use (0/1) or dysfunctional eating (0/1). For other outcomes, participants improved on depressive symptoms (1/1), functioning (1/1), cognitive reappraisal (1/1), but not other emotion outcomes (0/1). In 1 study including patients aged 18-25 years, compared to the general DBT group, participants in the young adult only DBT group showed improvement in "BPD" symptoms (1/1) and symptom severity (1/1). In 1 study without a control group focusing on caregivers of young children, participants improved over time on following outcomes: "BPD" and other

								symptoms, and caregiving self-esteem and relationship (1/1).
Uncontrolled intervention development studies and single case study with multiple measures	[110, 111]	2	<20 (n=1); 20-100 (n=1)	2010-2019 (n=2)	Europe (n=2)	Diagnoses: "BPD" diagnosis or criteria (n=2). Demographics: 100% female (n=2); only 18-25-year-olds (n=1).	In studies without a control group, participants improved over time on all outcomes: "BPD" symptoms (1/1), PTSD symptoms (1/1) and dissociative experiences (1/1). In 1 study focusing on young people aged 18-25 years, participants improved over time on "BPD" symptoms (1/1) and other symptoms (1/1).	

Table 2. Cognitive and behavioural and schema therapies

Treatment	Study design	References	Number of studies	Sample size	Date of publication	Country of article	Cohort diagnoses and demographics	Main findings
Cognitive and behavioural vs inactive/non-specialist	RCT	[112-129]	18 (4 pilot)	20-100 (n=12); >100 (n=6)	1990-1999 (n=2), 2000-2009 (n=7), 2010-2019 (n=9)	Europe (n=4); North America (n=6); Oceania (n=1); UK (n=7)	Diagnoses: Axis I and/or II diagnoses (n=1); avoidant "personality disorder" (n=1); "BPD" diagnosis or criteria (n=8); "personality disorder" diagnosis (n=3); "BPD" diagnosis/criteria and history of repeated self-harm (n=2); recent and previous self-harm (n=1); personality disturbance and recent and previous self-harm (n=1). Demographics: 100% female (n=4); 0-49% White (n=1), 80-99% White (n=5); 100% White (n=5).	On the primary outcomes of RCTs, compared to controls, participants receiving cognitive and behavioural therapies showed improvement in "personality disorder" symptoms (3/3), symptom severity (1/2), and social functioning (1/2), but not depressive (0/1) or (social) anxiety symptoms (0/1), service use (0/1), or frequency/number of participants with self-harming/suicidal behaviour (0/4). Compared to controls, a greater proportion of participants receiving cognitive and behavioural therapy recovered on symptoms (1/1). In other outcomes, compared to controls, participants receiving Cognitive and behavioural therapies showed improvement in symptom distress/severity (6/6), overall mental health (1/1), "personality disorder" symptoms (4/4), depressive symptoms (4/4) (with one study reporting mixed

								findings (0/1)), anxiety (2/6), stress (2/2), and dissociative (1/1) symptoms, hopelessness (1/1), quality of life (3/5), emotional regulation (3/4), self-harm (4/6), social functioning (1/4), global functioning (1/1), schemas (1/2), metacognition (1/1), and psychological flexibility (1/1). Cognitive and behavioural therapies were not superior on outcomes including proportion of participants meeting "BPD" criteria (0/1), service use (0/3), suicide attempts (0/1), suicidality (0/1), shyness (0/1), alexithymia (0/1), and costs (0/1) with one study reporting mixed findings (0/1).
Non-randomised experiments, observational studies, quasi experiment, and natural experiment with pre-post comparison	[130-137]	8	<20 (n=1); 20-100 (n=7)	1990-1999 (n=1), 2000-2009 (n=2), 2010-2019 (n=5)	Europe (n=2); North America (n=3); UK (n=3)	Diagnoses: Avoidant "personality disorder" diagnosis (n=1); "BPD" diagnosis (n=3); "BPD" criteria/diagnosis and repeated self-harm or suicidality (n=2); "BPD" diagnosis/criteria, mood disorder, history of self-harm, and emotional and behavioural dysregulation (n=1); childhood sexual abuse (n=1). Demographics: 100% female (n=1); 50-79% White (n=1), 80-99% White (n=1).	In studies without a control group, participants improved over time on the one reported primary outcome (self-harm: 1/1) and secondary outcomes: "personality disorder"/"BPD" symptoms (2/3), other symptoms (4/4; 5 domains), self-harm and suicide ideation/attempts (3/3), hospitalisation (1/1), quality of life (1/1), emotional regulation/intensity (2/2), schemas (1/1), personality beliefs (1/2), combination of measures (1/1), and most clinical and social outcomes (1/1), but not cognitive filter (0/1). In one study focusing on patients with childhood sexual abuse, participants improved over time on emotional regulation (1/1), interpersonal problems (1/1), and trauma symptoms (1/1).	

	Uncontrolled intervention development studies and single case study with multiple measures	[138-148]	11	<20 (n=8); 20-100 (n=3)	2000-2009 (n=2), 2010-2019 (n=9)	Asia (n=2), Europe (n=3); North America (n=1); Oceania (n=1); UK (n=4)	Diagnoses: "BPD" diagnosis (n=4); "BPD" diagnosis and comorbid emotional disorder (n=1); current or historic "BPD" diagnosis, "BPD" features, and current drug/alcohol disorder (n=1); "obsessive-compulsive personality disorder" diagnosis (n=1); chronic mood or adjustment disorder and comorbid "personality disorder" diagnosis/features (n=1); cluster-B or cluster-C "personality disorder" diagnosis or Axis II features (n=1); "personality disorder" diagnosis (n=2). Demographics: 80-99% White (n=1); 100% White (n=1); older age (n=1)	In studies without a control group, participants improved over time on the primary outcomes symptoms/distress (2/2; 2 domains) and quality of life (1/1), and also showed no dropouts (1/1). Participants improved on the following secondary outcomes: "personality disorder" symptoms (4/4) and other symptoms (4/4; 6 domains); functioning (2/2; 2 domains); personality integration/beliefs (2/2); emotional regulation, coping, and skills (3/3; 5 domains). Additionally, patients with a current substance misuse disorder showed a reduction in drug use. Elderly patients with a chronic mood or adjustment disorder showed improvement in symptom distress (1/1) and some but not all aspects of schema and coping variables (1/1).
Cognitive and behavioural vs specialist	RCT	[149-152]	4	20-100 (n=4)	2000-2009 (n=3), 2010-2019 (n=1)	Europe (n=3); North America (n=1)	Diagnoses: "BPD" features/diagnosis (n=2); cluster C or self-defeating "personality disorder" (n=2). Demographics: 100% White (n=1).	On the primary outcomes of 1 RCT, there was no difference between cognitive therapy and Rogerian Supportive Therapy in symptom improvement (0/1) as well as no between-group difference on secondary outcomes (0/1). In a RCT comparing Schema Focused Therapy (SFT) with cognitive therapy, significantly more participants receiving SFT recovered on the primary outcome ("BPD" symptoms: 1/1) as well as on secondary outcomes: symptom severity (1/1), "BPD" symptoms (1/1), and quality of life (1/1). In another RCT, there was no difference between patients

								receiving cognitive therapy and those receiving standalone outpatient treatment in the primary outcomes: symptom severity (0/1) and interpersonal problems (0/1). In a RCT comparing Dynamic psychotherapy with CT there were no between-group differences in outcomes: symptom severity (0/1), interpersonal problems (0/1), and “personality disorder” symptoms (0/1).
Non-randomised experiments, observational studies, quasi experiment, and natural experiment with pre-post comparison	[153-155]	3	20-100 (n=1); >100 (n=2)	2000-2009 (n=1), 2010-2019 (n=2)	Europe (n=3)	Diagnoses: “personality disorder” diagnosis (n=1); “personality disorder” NOS diagnosis (n=1); “BPD” diagnosis or other cluster-B “personality disorder” diagnosis with comorbid Axis I disorder (n=1). Demographics: no data report.	In studies with a control group, there was no difference between the TAU-CBT group and participants receiving ACT on the only primary outcome (personality functioning: 0/1) and most secondary outcomes (0/1). There were no differences between individuals receiving Double Setting Cognitive-Evaluation Therapy (DS-CET) and those receiving Individual Cognitive-Evolution therapy (I-CET) on any of the outcomes (0/1). In one study comparing six active groups, there was no between-group difference on the primary outcome (symptom severity: 0/1), and most groups improved on the secondary outcomes of social functioning and quality of life.	
Uncontrolled intervention development studies and single case study with multiple measures	[156]	1	<20 (n=1)	2010-2019 (n=1)	North America (n=1)	Diagnoses: NSSI disorder (n=1). Demographics: 50-79% White (n=1).	No significant results reported for outcomes in the 1 included study on patients with NSSI disorder. However, 8/10 participants reported meaningful reductions in self-harming behaviour.	

Cognitive and behavioural modified	RCT	[157, 158]	2 (1 pilot)	<20 (n=1); 20-100 (n=1)	1990-1999 (n=1), 2010-2019 (n=1)	North America (n=1); UK (n=1)	Diagnoses: "BPD" diagnosis (n=1); previous suicide attempts, antidepressants taken as part of an overdose, and suicidal behaviour (n=1). Demographics: 80-99% White (n=1).	On the primary outcome of 1 RCT, findings for differences between the Cognitive Behavioural Problem Solving and TAU group on suicidality were mixed (0/1). On other outcomes, findings were mixed or showed no between-group differences (0/2).
	Non-randomised experiments, observational studies, quasi experiment, and natural experiment with pre-post comparison	[159]	1	20-100 (n=1)	2000-2009 (n=1)	Europe (n=1)	Diagnoses: "personality disorder" diagnosis, excluding borderline, schizotypal, schizoid, antisocial "personality disorder", or "personality disorder" NOS (n=1). Demographics: no data reported.	The 1 study utilised a crossover design and showed significant improvements over the treatment period as a whole, but no between-group differences.
Cognitive and behavioural adapted	Uncontrolled intervention development studies and single case study with multiple measures	[160]	1	<20 (n=1)	2010-2019 (n=1)	Oceania (n=1)	Diagnoses: "personality disorder" diagnosis (n=1). Demographics: no data reported.	No statistical analysis conducted in the 1 included study. However, 5/8 patients no longer met criteria for an avoidant "personality disorder" at end of follow-up.
Schema therapy vs inactive/non-specialist	RCT	[161]	1	>100 (n=1)	2010-2019 (n=1)	Europe (n=1)	Diagnoses: Avoidant, dependent, obsessive-compulsive, paranoid, histrionic, or narcissistic "personality disorder" diagnosis (n=1).	On the primary outcome of the 1 RCT, compared to controls, a greater proportion of participants receiving schema therapy recovered (1/1). On other outcomes, compared to controls, participants receiving schema therapy showed improvement on 2/3 measures of functioning, but not quality of life (0/1).
	Uncontrolled intervention development studies and single case study with	[162-165]	4	<20 (n=4)	2000-2009 (n=1), 2010-2019 (n=3)	Europe (n=3); North America (n=1)	Diagnoses: "BPD" diagnosis (n=3); cluster C "personality disorder" or "personality disorder" not otherwise specified with cluster C traits (n=1).	In the 1 study that reported significance results, participants improved on "BPD" symptoms (1/1) and most other outcomes over time.

	multiple measures						Demographics: 100% female (n=3); old age (n=1)	
Schema therapy modified	RCT	[166]	1	20-100 (n=1)	2000-2009 (n=1)	Europe (n=1)	Diagnoses: "BPD" diagnosis (n=1). Demographics 80-99% (n=1).	On the primary outcome of the 1 RCT, there was no difference between participants receiving schema therapy with and those without phone support on recovery from "BPD" (0/1). There was also no significant difference on other outcomes (0/1).

Table 3. MBT and psychodynamic therapies

Treatment	Study design	References	Number of studies	Sample size	Date of publication	Country of article	Cohort diagnoses and demographics	Main findings
MBT vs inactive/non-specialist	RCT	[56, 167-169]	4	20-100 (n=4)	1990-1999 (n=1), 2000-2009 (n=2), 2010-2019 (n=1)	Asia (n=1), UK (n=3)	Diagnoses: "BPD" diagnosis (n=4). Demographics: no data reported.	In the primary outcomes of RCTs, compared to controls, participants receiving MBT showed improvement in the proportion of patients making suicide attempts in 1/1 studies. In 1 RCT, participants receiving MBT showed similar improvement in "BPD" symptoms compared to DBT (0/1), but greater improvement compared to participants receiving medication only (1/1). In other outcomes, compared to controls, participants receiving MBT showed improvement in symptom severity (1/1), depressive and anxiety symptoms (1/1), other symptoms (1/1), self-harming behaviour (1/1), medication use (1/1), social functioning (2/2), number of patients engaging in self-harm or suicide attempts (1/1) and being admitted to the hospital (1/1).

	Non-randomised experiments, observational studies, quasi experiment, and natural experiment with pre-post comparison	[170-175]	6	<20 (n=2), 20-100 (n=3), >100 (n=1)	2010-2019 (n=6)	Europe (n=6)	Diagnoses: "BPD" diagnosis (n=4), Generic "personality disorder" diagnosis (n=1), Generic "personality disorder" diagnosis and poor functioning (n=1) Demographics: 100% female (n=1).	In one study with a control group, no primary outcomes were reported. In other outcomes, participants improved in symptom distress, interpersonal functioning, global functioning, and occupational functioning. Participants did not improve compared to control in suicidal acts or self-harm, hospital admissions, and or medication use. In studies without a control group, participants showed improvements over time on the following primary outcomes: "personality disorder" symptoms (2/2), Interpersonal problems (1/1). In other outcomes, participants showed improvements over time in symptoms (3/3), global functioning (2/2), suicidality (1/1), service use (1/1), and unemployment (1).
MBT vs specialist	RCT	[176-179]	4	20-100 (n=1), >100 (n=3)	2000-2009 (n=1), 2010-2019 (n=3)	Europe (n=3), UK (n=1)	Diagnoses: "BPD" diagnosis (n=3), "BPD" and suicide attempt or life-threatening self-harm (n=1). Demographics: 50-79% White (n=1).	In the primary outcomes of RCTs, compared to specialist TAU psychotherapy, participants receiving MBT did not show improvement of borderline symptoms (0/1). Compared to structured clinical management, participants receiving MBT showed improvement in suicidal behaviours (1/1) and number of hospitalisations (1/1). In other outcomes, compared to specialist TAU psychotherapy, participants receiving MBT did not show improvements in general symptom severity (0/1), depressive symptoms (0/1), interpersonal problems (0/1) or quality of life (0/1). Compared to supportive group therapy, participants receiving MBT showed improvement in global functioning (1/2) but did not show improvement in depressive symptoms (0/2), anxiety symptoms (0/2), interpersonal functioning (0/2) or social functioning (0/1). Compared to structured clinical management, participants receiving MBT showed improvements in symptoms (1/1) and social functioning (1/1), but did not

								show improvements in depressive symptoms (0/1) and global functioning (0/1).
	Non-randomised experiments, observational studies, quasi experiment, and natural experiment with pre-post comparison	[83, 180-183]	5	20-100 (n=4), >100 (n=1)	2010-2019 (n=5)	Europe (n=1), UK (n=4)	Diagnoses: "BPD" diagnosis (n=2), "personality disorder" diagnosis (n=3). Demographics: 50-79% White (n=1), 80-99% White (n=3).	In studies with a control group, the primary outcome of bed use compared to an alternative psychoanalytic model did not significantly improve in the MBT group. For other outcomes, compared to DBT, participants receiving MBT did not have significantly reduced self-harm (0/1), symptom severity (0/1), emotional dysregulation (0/1), interpersonal problems (0/1) or dissociation (0/1). Compared to various other specialist treatments, participants receiving MBT had improved symptoms (1/1) and personality functioning (1/1) but did not have improved relational functioning (0/1). In studies without a control group, participants improved over time on bed use (1/1), global functioning (1/1), and symptom severity (1/1) but did not improve over time on other symptom measures (0/2), social adjustment (0/1), self-esteem (0/1), and quality of life (0/1).
MBT modified	RCT	[184]	1	>100 (n=1)	2020- (n=1)	Europe (n=1)	Diagnoses: Generic "personality disorder" diagnosis: (n=1). Demographics: no data reported.	Compared to lower intensity outpatient MBT, higher intensity day hospital MBT showed no difference in the primary outcome of symptom severity. In other outcomes, there was no difference in personality functioning, interpersonal problems, quality of life and or suicide and self-harm.
Psychodynamic vs inactive/non-specialist	RCT	[122, 185-189]	6	20-100 (n=4), >100 (n=2)	1990-1999 (n=2), 2000-2009 (n=3), 2010-2019 (n=1)	Canada (n=2), Europe (n=3), USA (n=1)	Diagnoses: "BPD" diagnosis (n=1), Generic "personality disorder" diagnosis (n=2), Avoidant "personality disorder" (n=1), "personality disorder" diagnosis	In the primary outcomes of RCTs, compared to controls, participants receiving psychodynamic therapy showed improvement in symptom severity (2/2), social functioning (1/2), and interpersonal functioning (1/1) but not dysfunctional borderline beliefs (0/1), anxiety symptoms (0/1) or the number of participants meeting diagnostic criteria for a "personality disorder" diagnosis (0/1). In other

							other than paranoid, schizoid, schizotypal, narcissistic, or borderline (n=1), long term psychiatric difficulties disrupting functioning (n=1). Demographics: no data reported.	outcomes, compared to controls, participants receiving psychodynamic therapy showed improvements in symptom severity (3/4), depressive symptoms (2/2), suicide intentionality (1/1), self-esteem (2/2), life satisfaction (1/1), social functioning (3/3), interpersonal functioning (1/1), global functioning (1/2), and occupational functioning (1/1), but did not show improvements in the number of patients meeting diagnostic criteria for a “personality disorder” diagnosis (0/1), emotional reliance (0/1) or anxiety symptoms (0/1).
Non-randomised experiments, observational studies, quasi experiment, and natural experiment with pre-post comparison	[61, 190-214]	26	<20 (n=1), 20-100 (n=18), >100 (n=7)	1990-1999 (n=6), 2000-2009 (n=12), 2010-2019 (n=7), 2020-(n=1)	Australia (n=7), Canada (n=4), Europe (n=10), UK (n=3), USA (n=2)	Diagnoses: Generic “personality disorder” (n=8), “BPD” diagnosis (n=8), “personality disorder” diagnosis or significant traits of personality dysfunction (n=2), treatment resistant depression with comorbid personality disorder and childhood trauma (n=1), “personality disorder” diagnosis and poor interpersonal functioning (n=2), problematic interpersonal functioning (n=1), “personality disorder” diagnosis and comorbid axis I mental health problem (n=3),	In studies with a control group, participants showed improvements compared to controls on the following primary measures: reflective functioning (2/2), “personality disorder” symptoms (1/1), social functioning (1/1), and depressive symptoms (1/1). In other outcomes, participants improved compared to the control on “personality disorder” symptoms (6/6), global functioning (4/4), social functioning (5/5), depressive symptoms (2/2), suicidal ideation or self-harm (2/3), interpersonal functioning (2/2), anxiety symptoms (1/1), and number of emergency contacts (1/1). In studies without a control group, participants improved over time in primary outcomes in interpersonal functioning (3/3) and symptom severity (1/1). In secondary outcomes, participants improved over time in symptom severity (13/13), other symptom measures (depression (6/6) the number of participants meeting diagnosis (4/4), anxiety (4/4), suicide and self-harm (5/5), functioning measures (11/12), service use (3/3), drug use (2/2), violence (1/1), life satisfaction (1/1), and self-esteem (1/1). Above-mentioned findings include studies that focused on patients with treatment	

							Avoidant or obsessive-compulsive "personality disorder" (n=1). Demographics: 100% female (n=1); 80-99% White (n=3), 100% White (n=1).	resistant depression and comorbid personality disorder and childhood trauma (n=1), "personality disorder" diagnosis and poor interpersonal functioning (n=2), problematic interpersonal functioning (n=1), and "personality disorder" diagnosis and comorbid axis I mental health problem (n=3).
	Uncontrolled intervention development studies and single case study with multiple measures	[215]	1	20-100 (n=1)	2000-2009 (n=1)	USA (n=1)	Diagnoses: "BPD" symptoms and suicidal or self-injurious behaviour (n=1). Demographics: 100% female (n=1); >50% white (n=1).	One uncontrolled feasibility trial found that patients given psychodynamic therapy improved over time in functioning, parasuicide and service utilisation (1/1).
Psychodynamic vs specialist	RCT	[80, 151, 152, 216-220]	8	20-100 (n=8)	1990-1999 (n=1), 2000-2009 (n=2), 2010-2019 (n=5)	Europe (n=5), Europe and North America (n=1), North America (n=2)	Diagnoses: "BPD" diagnosis (n=5), "personality disorder" diagnosis (n=1), Cluster C "personality disorder" diagnosis (n=2). Demographics: 50-79% White (n=1), 80-99% White (n=2), 100% white (n=1).	In primary outcomes of RCTs, compared to cognitive therapy, participants receiving psychodynamic therapy did not have significantly improved "personality disorder" symptoms (0/1). Compared to General Psychiatric Management, participants receiving psychodynamic therapy made significantly more overall progress in therapy (1/3) overall. Though no direct contrasts were made, in an RCT of DBT, supportive treatment and psychodynamic therapy, participants receiving psychodynamic therapy improved significantly in suicidality, aggression and impulsivity (1/1). In other outcomes, compared to cognitive therapy, participants receiving psychodynamic therapy did not improve interpersonal functioning (0/2), symptoms (0/1), personality functioning (0/1) or the number of patients with a "personality disorder" diagnosis (0/1). Compared to General Psychiatric Management, participants receiving psychodynamic therapy had improved

								<p>symptom distress (1/1) but did not have improved interpersonal functioning (0/2), symptom severity (0/2), social functioning (0/1), number of crisis consultations (0/1) or number of days spent in inpatient treatment (0/1). Compared to Short Term Dynamic Therapy, participants receiving Brief Supportive Psychotherapy showed no improvement in symptoms (0/1) or interpersonal functioning (0/1). Though again no direct contrasts were made, in the RCT of DBT, supportive treatment and psychodynamic therapy, participants receiving psychodynamic therapy improved significantly in depression (1/1), anxiety (1/1), global functioning (1/1) and social functioning (1/1).</p>
Non-randomised experiments, observational studies, quasi experiment, and natural experiment with pre-post comparison	[221-224]	4	20-100 (n=3), >100 (n=2)	1990-1999 (n=1), 2010-2019 (n=3)	Europe (n=3), USA (n=1)	<p>Diagnoses: Generic "personality disorder" diagnosis (n=1), generic "personality disorder" diagnosis with comparison between comorbid substance misuse (n=1), "BPD" diagnosis (n=2). Demographics: no data reported.</p>	<p>In studies with a control group, compared to stabilising treatments, participants given stabilising treatments had significantly higher improvements in symptom severity (1/1) and interpersonal functioning (1/1). Compared to DBT, participants given DDP had significantly greater improvement in the primary outcome of symptom severity (1/1), and other outcomes of self-harm (1/1), depression (1/1), and social and occupational impairment (1/1). Compared to day treatment without follow-up group psychotherapy, participants who were provided with follow-up group psychotherapy showed significant improvements in health sickness (1/1) and symptom severity (1/1) but did not show significantly different improvements in rehospitalisation (0/1) or suicide attempts (0/1). In one study with a pre-post comparison of patients with and without comorbid substance misuse in General Psychiatric Management, borderline symptoms improved significantly over time for both groups. One study found improved</p>	

								global functioning in group therapy compared to individual therapy.
Psychodynamic treatment setting comparisons	Non-randomised experiments, observational studies, quasi experiment, and natural experiment with pre-post comparison	[154, 225-229]	6	>100 (n=6)	2000-2009 (n=2), 2010-2019 (n=4)	Europe (n=3), UK (n=2), Europe and UK (n=1)	Diagnoses: Generic "personality disorder" (n=4), "personality disorder" NOS (n=1), severe "personality disorder" (n=1). Demographics: no data reported.	Six studies compared psychodynamic treatment in varying contexts. Primary outcomes were rarely reported. In studies comparing community-based services or step-down services to residential services, community or step-down services resulted in significantly improved symptom severity (1/1), psychiatric distress (1/1), self-harm and suicide (2/2), social adaption (1/1), and global functioning compared to residential services. In studies comparing day hospital, outpatient and inpatient services, there were no significant differences in outcomes between settings in symptom severity (0/4), psychosocial function (0/4), quality of life (0/3) or interpersonal functioning (0/2).
Psychodynamic adapted	RCT	[230, 231]	2	20-100 (n=2)	2000-2009 (n=1), 2010-2019 (n=1)	USA (n=2)	Diagnoses: "BPD" and alcohol use or substance dependence (n=2). Demographics: no data reported.	In the primary outcomes of RCTs comparing DDP combined with alcohol rehabilitation compared to TAU with alcohol rehabilitation for patients with co-occurring substance use disorders, DDP patients showed significantly higher clinically meaningful improvement (1/1), alcohol misuse (1/1), and use of institutional care (1/1). In other outcomes, participants receiving DDP showed significant improvements in symptom severity (2/2), depression (2/2), parasuicide (1/1), recreational drug use (1/1), and perceived social support (1/2) but did not show improvement compared to TAU in dissociation (0/1), heavy drinking days (0/1), and days employed (0/1).
	Non-randomised experiments, observational studies, quasi experiment, and natural experiment	[232]	1	20-100 (n=1)	2011-2019 (n=1)	Europe (n=1)	Diagnoses: "BPD" diagnosis (n=1) Demographics: relatively low socio-economic status (n=1).	A brief psychoeducational program based on General Psychiatric Management was more effective than generic outpatient treatment in improving symptom severity (1/1), except for the impulsivity subscale.

	with pre-post comparison							
--	--------------------------	--	--	--	--	--	--	--

Table 4. Other treatments

Treatment	Study design	References	Number of studies	Sample size	Date of publication	Country of article	Cohort diagnoses and demographics	Main findings
Mixed therapeutic modalities vs inactive/non-specialist	RCT	[233-235]	3	20-100 (n=2); >100 (n=1)	2010-2019 (n=3)	Europe (n=3)	Diagnoses: "BPD" diagnosis (n=3). Demographics: 100% female (n=1).	On the primary outcomes of RCTs, compared to controls, fewer participants in the intervention group dropped out (1/1) and attempted suicide (1/1), but there was no between-group difference in "BPD" symptoms (0/1). In other outcomes, compared to controls, participants in the intervention group showed greater improvement in "BPD" symptoms (1/1), personality organisation (1/1), number of participants no longer meeting "personality disorder" diagnosis criteria (1/1), social functioning (1/1), disturbed relationships (1/1), impulsivity (1/1), suicidality and self-damaging behaviours (1/1), chronic feelings of emptiness (1/1), working alliance (1/1), quality of life (1/1), inpatient admission (1/1), and improvements on a greater number of "BPD" symptom subscales (1/1). There was no between-group difference for depressive and anxiety symptoms (0/1), general psychopathology (0/1), self-harm (0/1), and other outcomes (0/1),
	Non-randomised experiments, observational studies, quasi experiment,	[236-241]	6	20-100 (n=3); >100 (n=3)	1990-1999 (n=1); 2000-2009 (n=3); 2010-2019 (n=2)	Europe (n=5); North America (n=1)	Diagnoses: "BPD" diagnosis (n=1); "BPD" diagnosis or "personality disorder" diagnosis with self-harm,	In studies without a control group, participants improved over time on following primary outcomes: "BPD" symptoms (1/1), symptom distress, interpersonal relations and social functioning (1/1), and service use

	and natural experiment with pre-post comparison						suicidal or impulsive behaviour (n=1); "personality disorder" diagnosis (n=4).	(1/1); as well as secondary outcomes symptoms (3/3), functioning (4/4; 3 domains), quality of life (1/1), and parasuicidal behaviour (1/1). One study reported that specific treatment characteristics, including higher proportion of nurses/other college-educated staff, more hours of therapy per week, and centres with university-linked units, were associated with higher functioning among patients.
Mixed therapeutic modalities vs specialist	RCT	[242]	1	>100 (n=1)	2010-2019 (n=1)	Europe (n=1)	Diagnoses: "personality disorder" diagnosis with focus on "BPD" and avoidant "personality disorder" (n=1).	In the 1 RCT, cost-effectiveness did not differ between the step-down treatment and outpatient control group (0/1).
Other individual therapy vs inactive/non-specialist	RCT	[188, 243-246]	5 (1 pilot and 1 also reported in specialist comparators)	20-100 (n=4); >100 (n=1)	1990-1999 (n=1); 2000-2009 (n=1); 2010-2019 (n=3)	Europe (n=3); North America (n=2)	Diagnoses: "BPD" diagnosis (n=1); major depressive disorder and "BPD" diagnosis (n=1); severe PD (n=1); cluster B/C "personality disorder" or "personality disorder" NOS diagnosis (n=1); "personality disorder" diagnosis other than paranoid, schizoid, schizotypal, narcissistic and borderline (n=1). Demographics: 100% female (n=2);	One RCT focusing on patients with "BPD" and major depressive disorder showed that on the primary outcomes, compared to TAU, participants receiving Abandonment psychotherapy showed improvement in suicidal relapse (1/1) and hospitalisation (1/1). In other outcomes, compared to TAU, participants receiving Abandonment psychotherapy showed improvement in suicidal ideation (1/1), global functioning (1/1), symptom severity (1/1), and depression diagnosis (1/1). In 1 RCT, there was no difference between the immediate and delayed psychoeducation group on the primary outcome ("BPD" severity: 0/1). In 1 RCT, compared to Group Psychotherapy, participants receiving Body-Awareness Group Therapy showed improvement in functioning

							50-79% White (n=1).	(1/1), symptom distress (1/1), and satisfaction with therapy and group climate (1/1). In 1 RCT, compared to waitlist controls, participants receiving Brief Adaptive Psychotherapy and Psychodynamic Psychotherapy showed improvement in target complaints (1/1), global symptom severity (1/1), and social functioning (1/1). One RCT only reported results for the Art therapy intervention group with significant improvements in psychological flexibility (1/1) and most cognitive schema modes (1/1) over time.
	Non-randomised experiments, observational studies, quasi experiment, and natural experiment with pre-post comparison	[247]	1	20-100 (n=1)	2010-2019 (n=1)	North America (n=1)	Diagnoses: Adverse childhood experiences. Demographics: 50-79% White (n=1).	In a study on a community sample with adverse childhood experiences without a control group, participants improved over time on the following outcomes: quality of life (1/1), mental wellbeing (1/1), physical symptoms (1/1), emotion regulation (1/1), and psychological resilience (1/1).
Other individual therapy vs specialist	RCT	[80, 244]	2 (1 also reported in non-specialist)	20-100 (n=1); >100 (n=1)	2000-2009 (n=1); 2010-2019 (n=1)	Europe (n=1); North America (n=1)	Diagnoses: "BPD" diagnosis (n=1); major depressive disorder and "BPD" diagnosis (n=1). Demographics: 50-79% White (n=1).	On the primary outcomes of 1 RCT with three active comparators, participants receiving Transference-Focused Psychotherapy or DBT improved similarly in suicidality, and participants receiving Transference-Focused Psychotherapy or Supportive Treatment showed greater improvements in anger and impulsivity compared to DBT. In 1 RCT focusing on patients with major depressive disorder and "BPD", there was no difference between Abandonment psychotherapy and TAU on the primary outcome (suicidal relapse: 0/1). On other outcomes, there were no between-group

								differences in suicidal ideation (0/1), global functioning (0/2), social functioning (0/1), depression (0/2), anxiety (0/1), and symptom severity (0/1).
Social-interpersonal and functional therapies vs non-specialist/inactive comparator	RCT	[248-250]	3	20-100 (n=1); >100 (n=2)	1990-1999 (n=1); 2000-2009 (n=1); 2010-2019 (n=1)	Europe (n=1); North America (n=1); UK (n=1)	Diagnoses: "personality disorder" diagnosis (n=1); "BPD" diagnosis (n=2).	On the primary outcomes of RCTs, compared to controls, participants in the intervention group showed improvement in social functioning (1/1) and social problem-solving skills (1/1), but not general functioning (0/1). In other outcomes, compared to controls, participants in the intervention group showed greater improvement in anger (1/1) and lower costs (1/1), but less improvement in depressive symptoms (0/1) and attention functioning (0/1).
Social-interpersonal and functional therapies vs specialist comparator	RCT	[251, 252]	2 (1 pilot)	20-100 (n=2)	1990-1999 (n=1); 2020- (n=1)	North America (n=1); UK (n=1)	Diagnoses: Avoidant "personality disorder" diagnosis (n=1); at least 3 episodes of self-harm in the past 3m (n=1).	On the primary and secondary outcomes of RCTs, there were no significant differences between skills training in vivo and skills training in the clinic as well as between Functional Imagery Training (FIT) and delayed FIT across outcomes (0/2).
Self-management and care planning vs self-management	RCT	[253, 254]	2	20-100 (n=2)	2010-2019 (n=2)	Europe (n=1); UK (n=1)	Diagnoses: "BPD" diagnosis and past self-harm (n=1); "personality disorder" diagnosis (n=1). Demographics: 50-79% White (n=1); 100% White (n=1).	On the primary outcomes of 1 RCT, the Joint Crisis Plan and TAU group did not differ in the frequency or proportion of participants who self-harm (0/1). In other outcomes, compared to TAU, participants receiving Joint Crisis planning did not differ in depressive and anxiety symptoms (0/1), satisfaction (0/1), working alliance (0/1), perceived coercion (0/1), quality of life (0/1), social functioning (0/1), wellbeing (0/1), and costs (0/1). Compared to Structured Goal-Focused Pre-Treatment Intervention (GFPTI),

								participants receiving therapeutic assessment showed greater expectancy for treatment (1/1), working alliance (1/1), and satisfaction (1/1), but not greater improvements in symptom severity (0/1) or demoralisation (0/1).
Self-management and care planning vs established generic or specialist mental health services	RCT	[255]	1	20-100 (n=1)	2000-2010 (n=1)	UK (n=1)	Diagnoses: Severe mental illness and comorbid personality disorder or difficulty (n=1).	On the primary outcome of the 1 RCT focusing on patients with severe mental illness and a diagnosis of a comorbid "personality disorder", there were no differences between Nidotherapy enhanced assertive outreach and standard assertive outreach in number of admissions (0/1) or duration of bed use (0/1). In other outcomes, compared to standard assertive outreach, participants receiving Nidotherapy enhanced assertive outreach did not improve on clinical symptoms (0/1), social functioning (0/1) or engagement (0/1).
	Non-randomised experiments, observational studies, quasi experiment, and natural experiment with pre-post comparison	[256-258]	3	20-100 (n=2); >100 (n=1)	2010-2019 (n=3)	Europe (n=1); North America (n=1); UK (n=1)	Diagnoses: "personality disorder" diagnosis (n=2); major depressive disorder diagnosis and PHQ-9 score ≥ 10 with or without a "personality disorder" diagnosis (n=1).	In the study focusing on patients with a major depressive disorder diagnosis and persistent depressive symptoms, compared to TAU, participants receiving collaborative care management showed improvement on the only reported primary outcome (remission of depression: 1/1). In another study, compared to TAU, participants in the Collaborative Care Programme (CCP) improved on "BPD" symptoms (1/1), but not quality of life (0/1). In the study without a control group, participants improved over time on service use (1/1; 3 domains).
Novel mental health service	RCT	[259-263]	5	20-100 (n=1);	2000-2009 (n=1); 2010-2019 (n=4)	Europe (n=5)	Diagnoses: "personality disorder" diagnosis	Four studies reported results for the same sample at different time points. Compared to outpatient controls,

model vs day hospital				>100 (n=4)			(n=4); "BPD" diagnosis (n=1).	<p>participants in the step-down day hospital group showed no difference in improvement of suicidal ideation and attempts (0/1), symptom severity (0/1), and social functioning (0/1) as well as less improvement in self-esteem (0/1) and interpersonal problems (0/1) at 18 months. On primary outcomes, compared to outpatient controls, participants in the step-down group showed less improvement in functioning (0/1) at 37 months. There were not between-group differences in social and occupational functioning (0/2), interpersonal problems (0/2), depressive symptoms (0/2), symptom severity (0/2), and quality of life (0/2) at 37 months and 6 years as well as functioning (0/1) at 6 years. In other outcomes, there were no between-group differences in self-harm, suicide attempts, and suicidality (0/2) at 37 months and 6 years. In 1 RCT only including patients with a "BPD" diagnosis, compared to outpatient controls, participants in the step-down intervention group showed greater improvement in symptom distress (1/1), self-control (1/1), identity (1/1), psychosocial functioning (1/1) at 6 years. There were no between-group differences in interpersonal functioning (0/1), depressive symptoms (0/1), quality of life (0/1) and suicidal thoughts (0/1) at 6 years.</p>
-----------------------	--	--	--	---------------	--	--	-------------------------------	--

Novel mental health service model vs established generic or specialist mental health services	RCT	[264, 265]	2	>100 (n=2)	2010-2019 (n=2)	Oceania (n=1); UK (n=1)	Diagnoses: "BPD" diagnosis (n=1); "personality disorder" diagnosis (n=1).	On the primary outcomes of 1 RCT, compared to TAU, participants receiving stepped care psychological therapy showed improvement in bed days (1/1) and A&E attendance (1/1). In 1 RCT, compared TAU, participants in the democratic therapeutic community group did not differ in hospital admissions (0/1). In other outcomes, compared to TAU, participants in the therapeutic community group showed greater improvement in aggression (1/1), self-harm (1/1), satisfaction (1/1), but not other outcomes (0/1).
	Non-randomised experiments, observational studies, quasi experiment, and natural experiment with pre-post comparison	[266-270]	5	20-100 (n=2); >100 (n=3)	2010-2019 (n=5)	North America (n=1); Oceania (n=1); UK (n=3)	Diagnoses: "personality disorder" diagnosis (n=4); "BPD" diagnosis (n=1). Demographics: 50-79% White (n=1).	In studies without a control group, participants improved over time on the following outcomes: "BPD" symptoms (1/1), other symptoms (3/3; 3 domains), quality of life (1/1), social functioning (2/2); suicidal ideation/risk (2/2); service use (1/2), substance misuse (1/1), but not self-harm (0/1) or other measures (0/1).
	Uncontrolled intervention development studies and single case study with multiple measures	[271]	1	<20 (n=1)	2010-2019 (n=1)	UK (n=1)	Diagnoses: "personality disorder" diagnosis (n=1). Demographics: older adults, +65 (n=1).	One intervention study on older adults (65+) found some evidence for improvement on outcomes but did not conduct a statistical analysis (1/1).

References

1. Moran P, Romaniuk H, Coffey C, Chanen A, Degenhardt L, Borschmann R, Patton GC: **The influence of personality disorder on the future mental health and social adjustment of young adults: a population-based, longitudinal cohort study.** *The Lancet Psychiatry* 2016, **3**(7):636-645.
2. Quirk SE, El-Gabalawy R, Brennan SL, Bolton JM, Sareen J, Berk M, Chanen AM, Pasco JA, Williams LJ: **Personality disorders and physical comorbidities in adults from the United States: data from the National Epidemiologic Survey on Alcohol and Related Conditions.** *Social psychiatry and psychiatric epidemiology* 2015, **50**(5):807-820.
3. Soeteman DI, Roijen LH-v, Verheul R, Busschbach JJ: **The economic burden of personality disorders in mental health care.** *Journal of Clinical Psychiatry* 2008, **69**(2):259.
4. Hastrup L, Jennum P, Ibsen R, Kjellberg J, Simonsen E: **Societal costs of Borderline Personality Disorders: a matched - controlled nationwide study of patients and spouses.** *Acta Psychiatrica Scandinavica* 2019, **140**(5):458-467.
5. Tyrer P, Mulder R, Crawford M, Newton-Howes G, Simonsen E, Ndeti D, Koldobsky N, Fossati A, Mbatia J, Barrett B: **Personality disorder: a new global perspective.** *World Psychiatry* 2010, **9**(1):56.
6. National Institute of Mental Health: **Personality disorder: No longer a diagnosis of exclusion.** In. London: Department of Health; 2003.
7. National Health and Medical Research Council: **Clinical Practice Guideline for the Management of Borderline Personality Disorder.** In. Melbourne: National Health and Medical Research Council; 2012.
8. Royal College of Psychiatrists: **Personality Disorder in Scotland.** In.; 2018.
9. Northern Ireland Personality Disorder Strategy: **Personality Disorder: A Diagnosis for Inclusion.** 2010.
10. Sheridan Rains L, Echave A, Rees J, Scott HR, Lever Taylor B, Broeckelmann E, Steare T, Barnett P, Cooper C, Jeynes T: **Service user experiences of community services for complex emotional needs: A qualitative thematic synthesis.** *PLoS One* 2021, **16**(4):e0248316.
11. Trevillion K, Stuart R, Ocloo J, Broeckelmann E, Jeffreys S, Jeynes T, Allen D, Russell J, Billings J, Crawford MJ: **Service user perspectives of community mental health services for people with complex emotional needs: a co-produced qualitative interview study.** *medRxiv* 2021.
12. Lester R, Prescott L, McCormack M, Sampson M, North West Boroughs Healthcare NFT: **Service users' experiences of receiving a diagnosis of borderline personality disorder: A systematic review.** *Personality and Mental Health* 2020, **14**(3):263-283.
13. Ring D, Lawn S: **Stigma perpetuation at the interface of mental health care: a review to compare patient and clinician perspectives of stigma and borderline personality disorder.** *Journal of Mental Health* 2019:1-21.
14. **RITB Position Statement On Borderline Personality Disorder** [<https://recoveryinthebin.org/2019/04/03/ritb-position-statement-on-borderline-personality-disorder/>]. Accessed 28 July 2021.

15. Royal College of Psychiatrists: **Services for people diagnosable with personality disorder: Position statement**. In.; 2020.
16. National Confidential Inquiry into Suicide and Homicide by People with Mental Illness: **Safer Care for Patients with Personality Disorder**. In. Manchester: University of Manchester; 2018.
17. Mental Health Council of Australia BaMI HRaEOC: **Not for service: experiences of injustice and despair in mental health care in Australia**. In. Canberra: Mental Health Council of Australia; 2005.
18. Dale O, Sethi F, Stanton C, Evans S, Barnicot K, Sedgwick R, Goldsack S, Doran M, Shoolbred L, Samele C: **Personality disorder services in England: findings from a national survey**. *BJPsych bulletin* 2017, **41**(5):247-253.
19. Ng F, Townsend ML, Jewell M, Marceau EM, Grenyer BF: **Priorities for service improvement in personality disorder in Australia: perspectives of consumers, carers and clinicians**. *Personality and Mental Health* 2020, **14**(4):350-360.
20. Troup J, Lever-Taylor B, Rains LS, Broeckelmann E, Russell J, Jeynes T, Cooper C, Steare T, Dedat Z, McNicholas S: **Clinician perspectives on what constitutes good practice in community services for people with Complex Emotional Needs: A qualitative thematic meta-synthesis**. *medRxiv* 2020.
21. Fanaian M, Lewis KL, Grenyer BF: **Improving services for people with personality disorders: Views of experienced clinicians**. *International Journal of Mental Health Nursing* 2013, **22**(5):465-471.
22. Flynn S, Raphael J, Graney J, Nyathi T, Williams A, Kapur N, Appleby L, Shaw J: **The personality disorder patient pathway: Service user and clinical perspectives**. *Personality and Mental Health* 2019, **13**(3):134-143.
23. Oud M, Arntz A, Hermens ML, Verhoef R, Kendall T: **Specialized psychotherapies for adults with borderline personality disorder: a systematic review and meta-analysis**. *Australian & New Zealand Journal of Psychiatry* 2018, **52**(10):949-961.
24. Barnicot K, Katsakou C, Bhatti N, Savill M, Fearn N, Priebe S: **Factors predicting the outcome of psychotherapy for borderline personality disorder: A systematic review**. *Clinical Psychology Review* 2012, **32**(5):400-412.
25. Cristea IA, Gentili C, Cotet CD, Palomba D, Barbui C, Cuijpers P: **Efficacy of psychotherapies for borderline personality disorder: a systematic review and meta-analysis**. *Jama psychiatry* 2017, **74**(4):319-328.
26. Storebø OJ, Stoffers-Winterling JM, Völlm BA, Kongerslev MT, Mattivi JT, Jørgensen MS, Faltinsen E, Todorovac A, Sales CP, Callesen HE: **Psychological therapies for people with borderline personality disorder**. *Cochrane Database of Systematic Reviews* 2020(5).
27. Sharma M, Nazareth I, Petersen I: **Observational studies of treatment effectiveness: worthwhile or worthless?** *Clinical Epidemiology* 2019, **11**:35.
28. Munn Z, Peters MD, Stern C, Tufanaru C, McArthur A, Aromataris E: **Systematic review or scoping review? Guidance for authors when choosing between a systematic or scoping review approach**. *BMC Medical Research Methodology* 2018, **18**(1):1-7.
29. Peters MD, Godfrey C, McInerney P, Munn Z, Tricco AC, Khalil H: **Scoping reviews**. In: *Aromataris E, Munn Z (Eds). edn.: JBI Manual for Evidence Synthesis* 2020.

30. Page MJ, McKenzie JE, Bossuyt PM, Boutron I, Hoffmann TC, Mulrow CD, Shamseer L, Tetzlaff JM, Akl EA, Brennan SE: **The PRISMA 2020 statement: an updated guideline for reporting systematic reviews.** *Bmj* 2021, **372**.
31. **Mental Health Policy Research Unit** [<https://www.ucl.ac.uk/psychiatry/research/mental-health-policy-research-unit>]. Accessed 21 October 2021.
32. Dingfelder SF: **Treatment for the untreatable.** *Monitor on Psychology* 2004, **35**(3):46-50.
33. Simonsen S, Bateman A, Bohus M, Dalewijk HJ, Doering S, Kaera A, Moran P, Renneberg B, Ribaudi JS, Taubner S: **European guidelines for personality disorders: past, present and future.** *Borderline Personality Disorder and Emotion Dysregulation* 2019, **6**(1):1-10.
34. Chanen A, Sharp C, Hoffman P, for Prevention GA: **Prevention and early intervention for borderline personality disorder: a novel public health priority.** *World Psychiatry* 2017, **16**(2):215.
35. Foye U, Stuart R, Trevillion K, Oram S, Allan D, Broecklemann E, Jeffreys S, Jeynes T, Crawford MJ, Moran P: **Clinician views on best practice community care for people with complex emotional needs and how it can be achieved: a qualitative study.** *medRxiv* 2021.
36. Katsakou C, Marougka S, Barnicot K, Savill M, White H, Lockwood K, Priebe S: **Recovery in borderline personality disorder (BPD): a qualitative study of service users' perspectives.** *PLoS one* 2012, **7**(5):e36517.
37. Lambert N, Carr S: **'Outside the Original Remit': Co - production in UK mental health research, lessons from the field.** *International Journal of Mental Health Nursing* 2018, **27**(4):1273-1281.
38. Walker PK, Jayashri: **We need to treat borderline personality disorder for what it really is – a response to trauma.** In.; 2019.
39. Reich DB, Zanarini MC: **Sexual orientation and relationship choice in borderline personality disorder over ten years of prospective follow-up.** *Journal of Personality Disorders* 2008, **22**(6):564-572.
40. Reuter TR, Sharp C, Kalpakci AH, Choi HJ, Temple JR: **Sexual orientation and borderline personality disorder features in a community sample of adolescents.** *Journal of Personality Disorders* 2016, **30**(5):694-707.
41. Alvarez-Tomás I, Soler J, Bados A, Martín-Blanco A, Elices M, Carmona C, Bauzá J, Pascual JC: **Long-term course of borderline personality disorder: a prospective 10-year follow-up study.** *Journal of Personality Disorders* 2017, **31**(5):590-605.
42. Gunderson JG, Stout RL, McGlashan TH, Shea MT, Morey LC, Grilo CM, Zanarini MC, Yen S, Markowitz JC, Sanislow C: **Ten-year course of borderline personality disorder: psychopathology and function from the Collaborative Longitudinal Personality Disorders study.** *Archives of general psychiatry* 2011, **68**(8):827-837.
43. Newton-Howes G, Tyrer P, Anagnostakis K, Cooper S, Bowden-Jones O, Weaver T: **The prevalence of personality disorder, its comorbidity with mental state disorders, and its clinical significance in community mental health teams.** *Social Psychiatry and Psychiatric Epidemiology* 2010, **45**(4):453-460.

44. Woelbert E, Kirtley A, Balmer N, Dix S: **How much is spent on mental health research: developing a system for categorising grant funding in the UK.** *The Lancet Psychiatry* 2019, **6**(5):445-452.
45. **StopSIM Coalition Consensus Statement** [<https://stopsim.co.uk/2021/04/21/stopsim-coalition-consensus-statement/>]. Accessed 18 October 2021.
46. McMain SF, Guimond T, Barnhart R, Habinski L, Streiner DL: **A randomized trial of brief dialectical behaviour therapy skills training in suicidal patients suffering from borderline disorder.** *Acta Psychiatrica Scandinavica* 2017, **135**(2):138-148.
47. Kramer U, Pascual - Leone A, Berthoud L, De Roten Y, Marquet P, Kolly S, Despland JN, Page D: **Assertive anger mediates effects of dialectical behaviour - informed skills training for borderline personality disorder: A randomized controlled trial.** *Clinical Psychology & Psychotherapy* 2016, **23**(3):189-202.
48. Feigenbaum JD, Fonagy P, Pilling S, Jones A, Wildgoose A, Bebbington PE: **A real - world study of the effectiveness of DBT in the UK National Health Service.** *British Journal of Clinical Psychology* 2012, **51**(2):121-141.
49. Priebe S, Bhatti N, Barnicot K, Bremner S, Gaglia A, Katsakou C, Molosankwe I, McCrone P, Zinkler M: **Effectiveness and cost-effectiveness of dialectical behaviour therapy for self-harming patients with personality disorder: A pragmatic randomised controlled trial.** *Psychotherapy and Psychosomatics* 2012, **81**(6):356-365.
50. Carter GL, Willcox CH, Lewin TJ, Conrad AM, Bendit N: **Hunter DBT project: randomized controlled trial of dialectical behaviour therapy in women with borderline personality disorder.** *Australian & New Zealand Journal of Psychiatry* 2010, **44**(2):162-173.
51. Soler J, Pascual JC, Tiana T, Cebrià A, Barrachina J, Campins MJ, Gich I, Alvarez E, Pérez V: **Dialectical behaviour therapy skills training compared to standard group therapy in borderline personality disorder: A 3-month randomised controlled clinical trial.** *Behaviour Research and Therapy* 2009, **47**(5):353-358.
52. Van den Bosch LM, Koeter MW, Stijnen T, Verheul R, van den Brink W: **Sustained efficacy of dialectical behaviour therapy for borderline personality disorder.** *Behaviour Research and Therapy* 2005, **43**(9):1231-1241.
53. Verheul R, Van Den Bosch LM, Koeter MW, De Ridder MA, Stijnen T, Van Den Brink W: **Dialectical behaviour therapy for women with borderline personality disorder: 12-month, randomised clinical trial in The Netherlands.** *The British Journal of Psychiatry* 2003, **182**(2):135-140.
54. Linehan MM, Tutek DA, Heard HL, Armstrong HE: **Interpersonal outcome of cognitive behavioral treatment for chronically suicidal borderline patients.** *American Journal of Psychiatry* 1994, **151**(12):1771-1775.
55. Linehan MM, Armstrong HE, Suarez A, Allmon D, Heard HL: **Cognitive-behavioral treatment of chronically parasuicidal borderline patients.** *Archives of General Psychiatry* 1991, **48**(12):1060-1064.

56. Khabir L, Mohamadi N, Rahimi C, Dastgheib SA: **The Effectiveness of Group Therapy based on Mentalization and Dialectical Behavior on Clinical Symptoms of Borderline Personality Disorder: A randomized controlled clinical trial.** *Journal of Health Sciences & Surveillance System* 2018, **6**(2):80-88.
57. Koons CR, Robins CJ, Tweed JL, Lynch TR, Gonzalez AM, Morse JQ, Bishop GK, Butterfield MI, Bastian LA: **Efficacy of dialectical behavior therapy in women veterans with borderline personality disorder.** *Behavior Therapy* 2001, **32**(2):371-390.
58. Robinson S, Lang JE, Hernandez AM, Holz T, Cameron M, Brannon B: **Outcomes of dialectical behavior therapy administered by an interdisciplinary team.** *Archives of Psychiatric Nursing* 2018, **32**(4):512-516.
59. Flynn D, Kells M, Joyce M, Corcoran P, Gillespie C, Suarez C, Weihrauch M, Cotter P: **Standard 12 month dialectical behaviour therapy for adults with borderline personality disorder in a public community mental health setting.** *Borderline Personality Disorder and Emotion Dysregulation* 2017, **4**(1):1-11.
60. Rizvi SL, Hughes CD, Hittman AD, Vieira Oliveira P: **Can trainees effectively deliver dialectical behavior therapy for individuals with borderline personality disorder? Outcomes from a training clinic.** *Journal of Clinical Psychology* 2017, **73**(12):1599-1611.
61. Gregory RJ, Sachdeva S: **Naturalistic outcomes of evidence-based therapies for borderline personality disorder at a medical university clinic.** *American Journal of Psychotherapy* 2016, **70**(2):167-184.
62. Stiglmayr C, Stecher-Mohr J, Wagner T, Meißner J, Spretz D, Steffens C, Roepke S, Fydrich T, Salbach-Andrae H, Schulze J: **Effectiveness of dialectic behavioral therapy in routine outpatient care: The Berlin Borderline Study.** *Borderline Personality Disorder and Emotion Dysregulation* 2014, **1**(1):1-11.
63. Koons CR, O'Rourke B, Carter B, Erhardt EB: **Negotiating for improved reimbursement for dialectical behavior therapy: A successful project.** *Cognitive and Behavioral Practice* 2013, **20**(3):314-324.
64. Gutteling BM, Montagne B, Nijs M, van den Bosch LW: **Dialectical behavior therapy: Is outpatient group psychotherapy an effective alternative to individual psychotherapy? Preliminary conclusions.** *Comprehensive Psychiatry* 2012, **53**(8):1161-1168.
65. Axelrod SR, Perepletchikova F, Holtzman K, Sinha R: **Emotion regulation and substance use frequency in women with substance dependence and borderline personality disorder receiving dialectical behavior therapy.** *The American Journal of Drug and Alcohol Abuse* 2011, **37**(1):37-42.
66. Blennerhassett R, Bamford L, Whelan A, Jamieson S, O'Raghallaigh JW: **Dialectical behaviour therapy in an Irish community mental health setting.** *Irish Journal of Psychological Medicine* 2009, **26**(2):59-63.
67. Comtois KA, Elwood L, Holdcraft LC, Smith WR, Simpson TL: **Effectiveness of dialectical behavior therapy in a community mental health center.** *Cognitive and Behavioral Practice* 2007, **14**(4):406-414.

68. Harley RM, Baity MR, Blais MA, Jacobo MC: **Use of dialectical behavior therapy skills training for borderline personality disorder in a naturalistic setting.** *Psychotherapy Research* 2007, **17**(3):351-358.
69. Zinkler M, Gaglia A, Arokiadass SR, Farhy E: **Dialectical behaviour treatment: implementation and outcomes.** *Psychiatric Bulletin* 2007, **31**(7):249-252.
70. Brassington J, Krawitz R: **Australasian dialectical behaviour therapy pilot outcome study: effectiveness, utility and feasibility.** *Australasian Psychiatry* 2006, **14**(3):313-318.
71. Ben-Porath DD, Peterson GA, Smee J: **Treatment of individuals with borderline personality disorder using dialectical behavior therapy in a community mental health setting: Clinical application and a preliminary investigation.** *Cognitive and Behavioral Practice* 2004, **11**(4):424-434.
72. Perseus K-I, Samuelsson M, Andersson E, Berndtsson T, Götmark H, Henriksson F, Kåver A, Nilssonne Å, Åsberg M: **Does dialectical behavioural therapy reduce treatment costs for patients with borderline personality disorder. A pilot study.** *Vård I Norden* 2004, **24**(2):27-30.
73. Lopez A, Chessick CA: **DBT graduate group pilot study: A model to generalize skills to create a "life worth living".** *Social Work in Mental Health* 2013, **11**(2):141-153.
74. Comtois KA, Kerbrat AH, Atkins DC, Harned MS, Elwood L: **Recovery from disability for individuals with borderline personality disorder: a feasibility trial of DBT-ACES.** *Psychiatric Services* 2010, **61**(11):1106-1111.
75. Stanley B, Brodsky B, Nelson JD, Dulit R: **Brief dialectical behavior therapy (DBT-B) for suicidal behavior and non-suicidal self injury.** *Archives of Suicide Research* 2007, **11**(4):337-341.
76. Flynn D, Kells M, Joyce M, Corcoran P, Hurley J, Gillespie C, Suarez C, Swales M, Arensman E: **Multisite implementation and evaluation of 12-month standard Dialectical Behavior Therapy in a public community setting.** *Journal of Personality Disorders* 2020, **34**(3):377-393.
77. McMMain SF, Guimond T, Streiner DL, Cardish RJ, Links PS: **Dialectical behavior therapy compared with general psychiatric management for borderline personality disorder: Clinical outcomes and functioning over a 2-year follow-up.** *American Journal of Psychiatry* 2012, **169**(6):650-661.
78. Pasiieczny N, Connor J: **The effectiveness of dialectical behaviour therapy in routine public mental health settings: An Australian controlled trial.** *Behaviour Research and Therapy* 2011, **49**(1):4-10.
79. McMMain SF, Links PS, Gnam WH, Guimond T, Cardish RJ, Korman L, Streiner DL: **A randomized trial of dialectical behavior therapy versus general psychiatric management for borderline personality disorder.** *American Journal of Psychiatry* 2009, **166**(12):1365-1374.
80. Clarkin JF, Levy KN, Lenzenweger MF, Kernberg OF: **Evaluating three treatments for borderline personality disorder: A multiwave study.** *American Journal of Psychiatry* 2007, **164**(6):922-928.
81. Linehan MM, Comtois KA, Murray AM, Brown MZ, Gallop RJ, Heard HL, Korslund KE, Tutek DA, Reynolds SK, Lindenboim N: **Two-year randomized controlled trial and follow-up of dialectical behavior therapy vs therapy by experts for suicidal behaviors and borderline personality disorder.** *Archives of General Psychiatry* 2006, **63**(7):757-766.
82. Linehan MM, Dimeff LA, Reynolds SK, Comtois KA, Welch SS, Heagerty P, Kivlahan DR: **Dialectical behavior therapy versus comprehensive validation therapy plus 12-step for the**

- treatment of opioid dependent women meeting criteria for borderline personality disorder.** *Drug and Alcohol Dependence* 2002, **67**(1):13-26.
83. Barnicot K, Crawford M: **Dialectical behaviour therapy v. mentalisation-based therapy for borderline personality disorder.** *Psychological Medicine* 2019, **49**(12):2060-2068.
84. Andión Ó, Ferrer M, Matali J, Gancedo B, Calvo N, Barral C, Valero S, Di Genova A, Diener MJ, Torrubia R: **Effectiveness of combined individual and group dialectical behavior therapy compared to only individual dialectical behavior therapy: A preliminary study.** *Psychotherapy* 2012, **49**(2):241.
85. Carmona i Farrés C, Elices M, Soler J, Domínguez - Clavé E, Martín - Blanco A, Pomarol - Clotet E, Salvador R, Martínez - Horta S, Pascual JC: **Effects of mindfulness training on the default mode network in borderline personality disorder.** *Clinical Psychology & Psychotherapy* 2019, **26**(5):562-571.
86. Lin T-J, Ko H-C, Wu JY-W, Oei TP, Lane H-Y, Chen C-H: **The effectiveness of dialectical behavior therapy skills training group vs. cognitive therapy group on reducing depression and suicide attempts for borderline personality disorder in Taiwan.** *Archives of Suicide Research* 2019, **23**(1):82-99.
87. Elices M, Pascual JC, Portella MJ, Feliu-Soler A, Martín-Blanco A, Carmona C, Soler J: **Impact of mindfulness training on borderline personality disorder: A randomized trial.** *Mindfulness* 2016, **7**(3):584-595.
88. Linehan MM, Korslund KE, Harned MS, Gallop RJ, Lungu A, Neacsiu AD, McDavid J, Comtois KA, Murray-Gregory AM: **Dialectical behavior therapy for high suicide risk in individuals with borderline personality disorder: A randomized clinical trial and component analysis.** *JAMA Psychiatry* 2015, **72**(5):475-482.
89. Turner RM: **Naturalistic evaluation of dialectical behavior therapy-oriented treatment for borderline personality disorder.** *Cognitive and Behavioral Practice* 2000, **7**(4):413-419.
90. Feliu - Soler A, Pascual JC, Elices M, Martín - Blanco A, Carmona C, Cebolla A, Simón V, Soler J: **Fostering self - compassion and loving - kindness in patients with borderline personality disorder: A randomized pilot study.** *Clinical Psychology & Psychotherapy* 2017, **24**(1):278-286.
91. Kells M, Joyce M, Flynn D, Spillane A, Hayes A: **Dialectical behaviour therapy skills reconsidered: applying skills training to emotionally dysregulated individuals who do not engage in suicidal and self-harming behaviours.** *Borderline Personality Disorder and Emotion Dysregulation* 2020, **7**(1):3.
92. Lakeman R, Emeleus M, Davies S, Anderson S: **A pragmatic evaluation of a high-fidelity dialectical behaviour therapy programme for youth with borderline personality disorder.** *Advances in Mental Health* 2020:1-11.
93. Lyng J, Swales MA, Hastings RP, Millar T, Duffy DJ, Booth R: **Standalone DBT group skills training versus standard (i.e. all modes) DBT for borderline personality disorder: A natural quasi-experiment in routine clinical practice.** *Community Mental Health Journal* 2020, **56**(2):238-250.

94. Aafjes-van Doorn K, Kamsteeg C, Portier K, Chitre G: **A dialectical behavior therapy skills group in a psychoanalytic community service: A pilot study.** *Journal of Cognitive Psychotherapy* 2020, **34**(1):21-46.
95. Sandage SJ, Long B, Moen R, Jankowski PJ, Worthington Jr EL, Wade NG, Rye MS: **Forgiveness in the treatment of borderline personality disorder: A quasi - experimental study.** *Journal of Clinical Psychology* 2015, **71**(7):625-640.
96. Williams SE, Hartstone MD, Denson LA: **Dialectical behavioural therapy and borderline personality disorder: Effects on service utilisation and self-reported symptoms.** *Behaviour Change* 2010, **27**(4):251.
97. Yen S, Johnson J, Costello E, Simpson EB: **A 5-day dialectical behavior therapy partial hospital program for women with borderline personality disorder: Predictors of outcome from a 3-month follow-up study.** *Journal of Psychiatric Practice* 2009, **15**(3):173.
98. Prendergast N, McCausland J: **Dialectic behaviour therapy: A 12-month collaborative program in a local community setting.** *Behaviour Change* 2007, **24**(1):25.
99. Sambrook S, Abba N, Chadwick P: **Evaluation of DBT emotional coping skills groups for people with parasuicidal behaviours.** *Behavioural and Cognitive Psychotherapy* 2007, **35**(2):241.
100. McQuillan A, Nicastro R, Guenot F, Girard M, Lissner C, Ferrero F: **Intensive dialectical behavior therapy for outpatients with borderline personality disorder who are in crisis.** *Psychiatric Services* 2005, **56**(2):193-197.
101. Conrad AMS, A Lewin, T J Dunbar, A: **Effectiveness of a 10-week group program based on Dialectical Behaviour Therapy skills among patients with personality and mood disorders: Findings from a pilot study.** *Australasian Psychiatry* 2017, **25**(5):466-470.
102. Meaney-Tavares R, Hasking P: **Coping and regulating emotions: A pilot study of a modified dialectical behavior therapy group delivered in a college counseling service.** *Journal of American College Health* 2013, **61**(5):303-309.
103. Pozzi E, Ridolfi ME, Manganaro D, Daniel DB, Berardi D: **Multiple integrated treatment of borderline personality disorders.** *Psychoanalytic Psychotherapy* 2008, **22**(3):218-234.
104. Bohus M, Kleindienst N, Hahn C, Müller-Engelmann M, Ludäscher P, Steil R, Fydrich T, Kuehner C, Resick PA, Stiglmayr C: **Dialectical Behavior Therapy for Posttraumatic Stress Disorder (DBT-PTSD) compared with Cognitive Processing Therapy (CPT) in complex presentations of PTSD in women survivors of childhood abuse: A randomized clinical trial.** *JAMA Psychiatry* 2020, **77**(12):1235-1245.
105. Kamalabadi MJ, Ahmadi SA, Etemadi O, Fatehizadeh M, Bahrami F, Firoozabadi A: **A study of the effect of couple dialectical behavioral therapy on symptoms and quality of marital relationships and mental health of Iranian borderline personality couples: A controlled trial.** *Interdisciplinary Journal of Contemporary Research in Business* 2012.
106. Harned MS, Korslund KE, Linehan MM: **A pilot randomized controlled trial of Dialectical Behavior Therapy with and without the Dialectical Behavior Therapy Prolonged Exposure protocol for suicidal and self-injuring women with borderline personality disorder and PTSD.** *Behaviour Research and Therapy* 2014, **55**:7-17.

107. Navarro-Haro MV, Botella C, Guillen V, Moliner R, Marco H, Jorquera M, Baños R, Garcia-Palacios A: **Dialectical behavior therapy in the treatment of borderline personality disorder and eating disorders comorbidity: A pilot study in a naturalistic setting.** *Cognitive Therapy and Research* 2018, **42**(5):636-649.
108. Williams AES, Yelland C, Hollamby S, Wigley M, Aylward P: **A new therapeutic group to help women with borderline personality disorder and their infants.** *Journal of Psychiatric Practice* 2018, **24**(5):331-340.
109. Lyng J, Swales MA, Hastings RP, Millar T, Duffy DJ: **Outcomes for 18 to 25 - year - olds with borderline personality disorder in a dedicated young adult only DBT programme compared to a general adult DBT programme for all ages 18+.** *Early Intervention in Psychiatry* 2019, **14**(1):61-68.
110. Steil R, Dittmann C, Müller-Engelmann M, Dyer A, Maasch A-M, Priebe K: **Dialectical behaviour therapy for posttraumatic stress disorder related to childhood sexual abuse: A pilot study in an outpatient treatment setting.** *European Journal of Psychotraumatology* 2018, **9**(1):1423832.
111. Lyng J, Swales M, Hastings R: **Dialectical behaviour therapy for younger adults: Evaluation of 22 weeks of community delivered dialectical behaviour therapy for females 18–25 years.** *Irish Journal of Psychological Medicine* 2015, **32**(4):299-305.
112. McMurrin M, Day F, Reilly J, Delport J, McCrone P, Whitham D, Tan W, Duggan C, Montgomery AA, Williams HC: **Psychoeducation and Problem Solving (PEPS) therapy for adults with personality disorder: A pragmatic randomized-controlled trial.** *Journal of Personality Disorders* 2017, **31**(6):810-826.
113. Clarke S, Kingston J, James K, Bolderston H, Remington B: **Acceptance and commitment therapy group for treatment-resistant participants: A randomized controlled trial.** *Journal of Contextual Behavioral Science* 2014, **3**(3):179-188.
114. Clarke S, Thomas P, James K: **Cognitive analytic therapy for personality disorder: randomised controlled trial.** *The British Journal of Psychiatry* 2013, **202**(2):129-134.
115. Gratz K, Tull M, Levy R: **Randomized controlled trial and uncontrolled 9-month follow-up of an adjunctive emotion regulation group therapy for deliberate self-harm among women with borderline personality disorder.** *Psychological Medicine* 2013, **44**(10):2099.
116. Bos EH, Van Wel EB, Appelo MT, Verbraak MJ: **Effectiveness of systems training for emotional predictability and problem solving (STEPPS) for borderline personality problems in a 'real-world'sample: Moderation by diagnosis or severity?** *Psychotherapy and Psychosomatics* 2011, **80**(3):173-181.
117. Bos EH, van Wel EB, Appelo MT, Verbraak MJ: **A randomized controlled trial of a Dutch version of systems training for emotional predictability and problem solving for borderline personality disorder.** *The Journal of Nervous and Mental Disease* 2010, **198**(4):299-304.
118. Davidson KM, Tyrer P, Norrie J, Palmer SJ, Tyrer H: **Cognitive therapy v. usual treatment for borderline personality disorder: Prospective 6-year follow-up.** *The British Journal of Psychiatry* 2010, **197**(6):456-462.

119. Farrell JM, Shaw IA, Webber MA: **A schema-focused approach to group psychotherapy for outpatients with borderline personality disorder: A randomized controlled trial.** *Journal of Behavior Therapy and Experimental Psychiatry* 2009, **40**(2):317-328.
120. Blum N, St. John D, Pfohl B, Stuart S, McCormick B, Allen J, Arndt S, Black DW: **Systems Training for Emotional Predictability and Problem Solving (STEPPS) for outpatients with borderline personality disorder: a randomized controlled trial and 1-year follow-up.** *American Journal of Psychiatry* 2008, **165**(4):468-478.
121. Davidson K, Norrie J, Tyrer P, Gumley A, Tata P, Murray H, Palmer S: **The effectiveness of cognitive behavior therapy for borderline personality disorder: Results from the borderline personality disorder study of cognitive therapy (BOSCOT) trial.** *Journal of Personality Disorders* 2006, **20**(5):450-465.
122. Emmelkamp PM, Benner A, Kuipers A, Feiertag GA, Koster HC, van Apeldoorn FJ: **Comparison of brief dynamic and cognitive behavioural therapies in avoidant personality disorder.** *The British Journal of Psychiatry* 2006, **189**(1):60-64.
123. Weinberg I, Gunderson JG, Hennen J, Cutter Jr CJ: **Manual assisted cognitive treatment for deliberate self-harm in borderline personality disorder patients.** *Journal of Personality Disorders* 2006, **20**(5):482-492.
124. Tyrer P, Tom B, Byford S, Schmidt U, Jones V, Davidson K, Knapp M, MacLeod A, Catalan J: **Differential effects of manual assisted cognitive behavior therapy in the treatment of recurrent deliberate self-harm and personality disturbance: The POPMACT study.** *Journal of Personality Disorders* 2004, **18**(1):102-116.
125. Alden L: **Short-term structured treatment for avoidant personality disorder.** *Journal of Consulting and Clinical Psychology* 1989, **57**(6):756.
126. Popolo R, MacBeth A, Canfora F, Rebecchi D, Toselli C, Salvatore G, Dimaggio G: **Metacognitive Interpersonal Therapy in group (MIT - G) for young adults with personality disorders: A pilot randomized controlled trial.** *Psychology and Psychotherapy: Theory, Research and Practice* 2018, **92**(3):342-358.
127. Morton J, Snowdon S, Gopold M, Guymer E: **Acceptance and commitment therapy group treatment for symptoms of borderline personality disorder: A public sector pilot study.** *Cognitive and Behavioral Practice* 2012, **19**(4):527-544.
128. Gratz KL, Gunderson JG: **Preliminary data on an acceptance-based emotion regulation group intervention for deliberate self-harm among women with borderline personality disorder.** *Behavior Therapy* 2006, **37**(1):25-35.
129. Evans K, Tyrer P, Catalan J, Schmidt U, Davidson K, Dent J, Tata P, Thornton S, Barber J, Thompson S: **Manual-assisted cognitive-behaviour therapy (MACT): A randomized controlled trial of a brief intervention with bibliotherapy in the treatment of recurrent deliberate self-harm.** *Psychological Medicine* 1999, **29**(1):19-25.
130. MacIntosh HB, Cloitre M, Kortis K, Peck A, Weiss BJ: **Implementation and evaluation of the skills training in affective and interpersonal regulation (STAIR) in a community setting in the context of childhood sexual abuse.** *Research on Social Work Practice* 2018, **28**(5):595-602.

131. Sahlin H, Bjureberg J, Gratz KL, Tull MT, Hedman E, Bjärehed J, Jokinen J, Lundh L-G, Ljótsson B, Hellner C: **Emotion regulation group therapy for deliberate self-harm: A multi-site evaluation in routine care using an uncontrolled open trial design.** *BMJ Open* 2017, **7**(10):e016220.
132. Hill N, Geoghegan M, Shawe - Taylor M: **Evaluating the outcomes of the STEPPS programme in a UK community - based population; implications for the multidisciplinary treatment of borderline personality disorder.** *Journal of Psychiatric and Mental Health Nursing* 2016, **23**(6-7):347-356.
133. Alesiani R, Boccalon S, Giarolli L, Blum N, Fossati A: **Systems Training for Emotional Predictability and Problem Solving (STEPPS): Program efficacy and personality features as predictors of drop-out - An Italian study.** *Comprehensive Psychiatry* 2014, **55**(4):920-927.
134. Harvey R, Black DW, Blum N: **Systems training for emotional predictability and problem solving (STEPPS) in the United Kingdom: A preliminary report.** *Journal of Contemporary Psychotherapy* 2010, **40**(4):225-232.
135. Brown GK, Newman CF, Charlesworth SE, Crits-Christoph P, Beck AT: **An open clinical trial of cognitive therapy for borderline personality disorder.** *Journal of Personality Disorders* 2004, **18**(3: Special issue):257-271.
136. Ryle A, Golyunkina K: **Effectiveness of time - limited cognitive analytic therapy of borderline personality disorder: Factors associated with outcome.** *British Journal of Medical Psychology* 2000, **73**(2):197-210.
137. Renneberg B, Goldstein AJ, Phillips D, Chambless DL: **Intensive behavioral group treatment of avoidant personality disorder.** *Behavior Therapy* 1990, **21**(3):363-377.
138. Nordahl HM, Wells A: **Metacognitive therapy of early traumatized patients with borderline personality disorder: A phase-II baseline controlled trial.** *Frontiers in Psychology* 2019, **10**:1694.
139. Hall K, Simpson A, O'donnell R, Sloan E, Staiger PK, Morton J, Ryan D, Nunn B, Best D, Lubman DI: **Emotional dysregulation as a target in the treatment of co - existing substance use and borderline personality disorders: A pilot study.** *Clinical Psychologist* 2018, **22**(2):112-125.
140. Mohammadi F, Bakhtiari M, Masjedi Arani A, Dolatshahi B, Habibi M: **The applicability and efficacy of transdiagnostic cognitive behavior therapy on reducing signs and symptoms of borderline personality disorder with co-occurring emotional disorders: A pilot study.** *Iranian Journal of Psychiatry and Behavioral Sciences* 2018, **12**(1).
141. Sauer-Zavala S, Bentley KH, Wilner JG: **Transdiagnostic treatment of borderline personality disorder and comorbid disorders: A clinical replication series.** *Journal of Personality Disorders* 2016, **30**(1):35-51.
142. Videler A, Rossi G, Schoevaars M, Van der Feltz-Cornelis C, Van Alphen S: **Effects of schema group therapy in older outpatients: A proof of concept study.** *International Psychogeriatrics* 2014, **26**(10):1709.
143. Kellett S, Bennett D, Ryle T, Thake A: **Cognitive analytic therapy for borderline personality disorder: Therapist competence and therapeutic effectiveness in routine practice.** *Clinical Psychology & Psychotherapy* 2013, **20**(3):216-225.

144. Lucre KM, Corten N: **An exploration of group compassion - focused therapy for personality disorder.** *Psychology and Psychotherapy: Theory, Research and Practice* 2013, **86**(4):387-400.
145. Renner F, van Goor M, Huibers M, Arntz A, Butz B, Bernstein D: **Short-term group schema cognitive-behavioral therapy for young adults with personality disorders and personality disorder features: Associations with changes in symptomatic distress, schemas, schema modes and coping styles.** *Behaviour Research and Therapy* 2013, **51**(8):487-492.
146. Clarke S, Kingston J, Wilson KG, Bolderston H, Remington B: **Acceptance and commitment therapy for a heterogeneous group of treatment-resistant clients: A treatment development study.** *Cognitive and Behavioral Practice* 2012, **19**(4):560-572.
147. Ng RM: **Cognitive therapy for obsessive-compulsive personality disorder - A pilot study in Hong Kong Chinese patients.** *Hong Kong Journal of Psychiatry* 2005, **15**(2):50-54.
148. Wildgoose A, Clarke S, Waller G: **Treating personality fragmentation and dissociation in borderline personality disorder: A pilot study of the impact of cognitive analytic therapy.** *British Journal of Medical Psychology* 2001, **74**(1):47-55.
149. Cottraux J, Note ID, Boutitie F, Millierey M, Genouihlac V, Yao SN, Note B, Mollard E, Bonasse F, Gaillard S: **Cognitive therapy versus Rogerian supportive therapy in borderline personality disorder.** *Psychotherapy and Psychosomatics* 2009, **78**(5):307-316.
150. Giesen-Bloo J, Van Dyck R, Spinhoven P, Van Tilburg W, Dirksen C, Van Asselt T, Kremers I, Nadort M, Arntz A: **Outpatient psychotherapy for borderline personality disorder: Randomized trial of schema-focused therapy vs transference-focused psychotherapy.** *Archives of General Psychiatry* 2006, **63**(6):649-658.
151. Kallestad H, Valen J, McCullough L, Svartberg M, Høglend P, Stiles TC: **The relationship between insight gained during therapy and long-term outcome in short-term dynamic psychotherapy and cognitive therapy for cluster C personality disorders.** *Psychotherapy Research* 2010, **20**(5):526-534.
152. Svartberg M, Stiles TC, Seltzer MH: **Randomized, controlled trial of the effectiveness of short-term dynamic psychotherapy and cognitive therapy for cluster C personality disorders.** *American journal of Psychiatry* 2004, **161**(5):810-817.
153. Chakhssi F, Janssen W, Pol SM, Van Dreumel M, Westerhof GJ: **Acceptance and commitment therapy group - treatment for non - responsive patients with personality disorders: An exploratory study.** *Personality and Mental Health* 2015, **9**(4):345-356.
154. Horn EK, Bartak A, Meerman AM, Rossum BV, Ziegler UM, Thunnissen M, Soons M, Andrea H, Hamers EF, Emmelkamp PM: **Effectiveness of psychotherapy in personality disorders not otherwise specified: A comparison of different treatment modalities.** *Clinical Psychology & Psychotherapy* 2015, **22**(5):426-442.
155. Ivaldi A, Fassone G, Rocchi M, Mantione G: **The integrated model (individual and group treatment) of cognitive-evolutionary therapy for outpatients with borderline personality disorder and axis I/II comorbid disorders: Outcome results and a single case report.** *Group* 2007:63-88.

156. Bentley KH, Nock MK, Sauer-Zavala S, Gorman BS, Barlow DH: **A functional analysis of two transdiagnostic, emotion-focused interventions on nonsuicidal self-injury.** *Journal of Consulting and Clinical Psychology* 2017, **85**(6):632.
157. Salkovskis PM, Atha C, Storer D: **Cognitive-behavioural problem solving in the treatment of patients who repeatedly attempt suicide a controlled trial.** *The British Journal of Psychiatry* 1990, **157**(6):871-876.
158. Morey LC, Lowmaster SE, Hopwood CJ: **A pilot study of manual-assisted cognitive therapy with a therapeutic assessment augmentation for borderline personality disorder.** *Psychiatry Research* 2010, **178**(3):531-535.
159. Weertman A, Arntz A: **Effectiveness of treatment of childhood memories in cognitive therapy for personality disorders: A controlled study contrasting methods focusing on the present and methods focusing on childhood memories.** *Behaviour Research and Therapy* 2007, **45**(9):2133-2143.
160. Skewes SA, Samson RA, Simpson SG, van Vreeswijk M: **Short-term group schema therapy for mixed personality disorders: A pilot study.** *Frontiers in Psychology* 2015, **5**:1592.
161. Bamelis LL, Evers SM, Spinhoven P, Arntz A: **Results of a multicenter randomized controlled trial of the clinical effectiveness of schema therapy for personality disorders.** *American Journal of Psychiatry* 2014, **171**(3):305-322.
162. Videler AC, van Alphen SP, van Royen RJ, van der Feltz-Cornelis CM, Rossi G, Arntz A: **Schema therapy for personality disorders in older adults: A multiple-baseline study.** *Aging & Mental Health* 2018, **22**(6):738-747.
163. Fassbinder E, Schuetze M, Kranich A, Sipos V, Hohagen F, Shaw I, Farrell J, Arntz A, Schweiger U: **Feasibility of group schema therapy for outpatients with severe borderline personality disorder in Germany: A pilot study with three year follow-up.** *Frontiers in Psychology* 2016, **7**:1851.
164. Dickhaut V, Arntz A: **Combined group and individual schema therapy for borderline personality disorder: A pilot study.** *Journal of Behavior Therapy and Experimental Psychiatry* 2014, **45**(2):242-251.
165. Nordahl HM, Nysæter TE: **Schema therapy for patients with borderline personality disorder: A single case series.** *Journal of Behavior Therapy and Experimental Psychiatry* 2005, **36**(3):254-264.
166. Nadort M, Arntz A, Smit JH, Giesen-Bloo J, Eikelenboom M, Spinhoven P, van Asselt T, Wensing M, van Dyck R: **Implementation of outpatient schema therapy for borderline personality disorder with versus without crisis support by the therapist outside office hours: A randomized trial.** *Behaviour Research and Therapy* 2009, **47**(11):961-973.
167. Bateman A, Fonagy P: **8-year follow-up of patients treated for borderline personality disorder: mentalization-based treatment versus treatment as usual.** *American Journal of Psychiatry* 2008, **165**(5):631-638.
168. Bateman A, Fonagy P: **Treatment of borderline personality disorder with psychoanalytically oriented partial hospitalization: an 18-month follow-up.** *American Journal of Psychiatry* 2001, **158**(1):36-42.

169. Bateman A, Fonagy P: **Effectiveness of partial hospitalization in the treatment of borderline personality disorder: a randomized controlled trial.** *American Journal of Psychiatry* 1999, **156**(10):1563-1569.
170. Beattie D, Murphy S, Jamieson S, Lee A: **Running a mentalization-based treatment (MBT) programme within a public community adult mental health service setting: a feasibility study.** *Irish Journal of Psychological Medicine* 2019:1-11.
171. Carrera S, Pandolfi G, Cappelletti JY, Padoani W, Salcuni S: **Oriented mentalization-based treatment for borderline personality disorder patients: preliminary results at camposampiero mental health center.** *Research in Psychotherapy: Psychopathology, Process, and Outcome* 2018, **21**(3).
172. Kvarstein EH, Pedersen G, Urnes Ø, Hummelen B, Wilberg T, Karterud S: **Changing from a traditional psychodynamic treatment programme to mentalization - based treatment for patients with borderline personality disorder - Does it make a difference?** *Psychology and Psychotherapy: Theory, Research and Practice* 2015, **88**(1):71-86.
173. Löf J, Clinton D, Kaldo V, Rydén G: **Symptom, alexithymia and self-image outcomes of Mentalisation-based treatment for borderline personality disorder: A naturalistic study.** *BMC Psychiatry* 2018, **18**(1):1-9.
174. Bales D, van Beek N, Smits M, Willemsen S, Busschbach JJ, Verheul R, Andrea H: **Treatment outcome of 18-month, day hospital mentalization-based treatment (MBT) in patients with severe borderline personality disorder in the Netherlands.** *Journal of Personality Disorders* 2012, **26**(4):568-582.
175. Petersen B, Toft J, Christensen NB, Foldager L, Munk - jørgensen P, Windfeld M, Frederiksen CK, Valbak K: **A 2 - year follow - up of mentalization - oriented group therapy following day hospital treatment for patients with personality disorders.** *Personality and Mental Health* 2010, **4**(4):294-301.
176. Laurensen E, Luyten P, Kikkert MJ, Westra D, Peen J, Soons MB, van Dam A-M, van Broekhuizen AJ, Blankers M, van Busschbach J: **Day hospital mentalization-based treatment versus specialist treatment as usual in patients with borderline personality disorder: Randomized controlled trial.** *Psychological Medicine* 2018, **48**(15):2522-2529.
177. Jørgensen C, Freund C, Bøye R, Jordet H, Andersen D, Kjølbye M: **Outcome of mentalization - based and supportive psychotherapy in patients with borderline personality disorder: A randomized trial.** *Acta Psychiatrica Scandinavica* 2013, **127**(4):305-317.
178. Jørgensen CR, Bøye R, Andersen D, Døssing Blaabjerg AH, Freund C, Jordet H, Kjølbye M: **Eighteen months post-treatment naturalistic follow-up study of mentalization-based therapy and supportive group treatment of borderline personality disorder: Clinical outcomes and functioning.** *Nordic Psychology* 2014, **66**(4):254-273.
179. Bateman A, Fonagy P: **Randomized controlled trial of outpatient mentalization-based treatment versus structured clinical management for borderline personality disorder.** *American Journal of Psychiatry* 2009, **166**(12):1355-1364.

180. Bales DL, Timman R, Andrea H, Busschbach JJ, Verheul R, Kamphuis JH: **Effectiveness of day hospital mentalization - based treatment for patients with severe borderline personality disorder: A matched control study.** *Clinical Psychology & Psychotherapy* 2015, **22**(5):409-417.
181. Jones B, Juett G, Hill N: **A two-model integrated personality disorder service: two-year follow up of effect upon psychiatric bed use.** *Therapeutic Communities: The International Journal of Therapeutic Communities* 2013.
182. Jones B, Juett G, Hill N: **Initial outcomes of a therapeutic community - based outpatient programme in the management of personality disorder.** *Therapeutic Communities: The International Journal of Therapeutic Communities* 2013.
183. Jones B, Juett G, Hill N: **A two-model integrated personality disorder service: effect on bed use.** *The Psychiatrist* 2012, **36**(8):293-298.
184. Smits ML, Feenstra DJ, Eeren HV, Bales DL, Laurensen EM, Blankers M, Soons MB, Dekker JJ, Lucas Z, Verheul R: **Day hospital versus intensive out-patient mentalisation-based treatment for borderline personality disorder: Multicentre randomised clinical trial.** *The British Journal of Psychiatry* 2020, **216**(2):79-84.
185. Reneses B, Galian M, Serrano R, Figuera D, Fernandez del Moral A, López-Ibor JJ, Fuentes M, Trujillo M: **A new time limited psychotherapy for BPD: Preliminary results of a randomized and controlled trial.** *Actas Espanolas de Psiquiatria* 2013, **41**(3).
186. Abbass A, Sheldon A, Gyra J, Kalpin A: **Intensive short-term dynamic psychotherapy for DSM-IV personality disorders: A randomized controlled trial.** *The Journal of Nervous and Mental Disease* 2008, **196**(3):211-216.
187. Vinnars B, Barber JP, Norén K, Gallop R, Weinryb RM: **Manualized supportive-expressive psychotherapy versus nonmanualized community-delivered psychodynamic therapy for patients with personality disorders: bridging efficacy and effectiveness.** *American Journal of Psychiatry* 2005, **162**(10):1933-1940.
188. Winston A, Laikin M, Pollack J, Wallner Samstag L, McCullough L, Muran JC: **Short-term psychotherapy of personality disorders.** *American Journal of Psychiatry* 1994, **151**(2):190-194.
189. Piper WE, Rosie JS, Azim HF, Joyce AS: **A randomized trial of psychiatric day treatment for patients with affective and personality disorders.** *Psychiatric Services* 1993, **44**(8):757-763.
190. Chiesa M, Luyten P, Fonagy P: **Two-year follow-up and changes in reflective functioning in specialist and nonspecialist treatment models for personality disorder.** *Personality Disorders: Theory, Research, and Treatment* 2020.
191. Kealy D, Joyce AS, Weber R, Ehrenthal JC, Ogradniczuk JS: **What the patient wants: Addressing patients' treatment targets in an integrative group psychotherapy programme.** *Psychology and Psychotherapy: Theory, Research and Practice* 2019, **92**(1):20-38.
192. Joyce AS, Ogradniczuk JS, Kealy D: **Intensive evening outpatient treatment for patients with personality dysfunction: Early group process, change in interpersonal distress, and longer-term social functioning.** *Psychiatry* 2017, **80**(2):184-195.
193. Kvarstein EH, Nordviste O, Dragland L, Wilberg T: **Outpatient psychodynamic group psychotherapy—outcomes related to personality disorder, severity, age and gender.** *Personality and Mental Health* 2017, **11**(1):37-50.

194. Stevenson J, Haliburn J, Halovic S: **Trauma, personality disorders and chronic depression - the role of the conversational model of psychodynamic psychotherapy in treatment resistant depression.** *Psychoanalytic Psychotherapy* 2015, **30**(1):23-41.
195. Joyce AS, Stovel LE, Ogrodniczuk JS, Fujiwara E: **Defense style as a predictor of change in interpersonal problems among patients attending day treatment for personality disorder.** *Psychodynamic Psychiatry* 2013, **41**(4):597-617.
196. Berghout CC, Zevalkink J, Katzko MW, de Jong JT: **Changes in symptoms and interpersonal problems during the first 2 years of long - term psychoanalytic psychotherapy and psychoanalysis.** *Psychology and Psychotherapy: Theory, Research and Practice* 2012, **85**(2):203-219.
197. Berghout CC, Zevalkink J: **Clinical significance of long-term psychoanalytic treatment.** *Bulletin of the Menninger Clinic* 2009, **73**(1):7-33.
198. Chiesa M, Fonagy P, Gordon J: **Community-based psychodynamic treatment program for severe personality disorders: Clinical description and naturalistic evaluation.** *Journal of Psychiatric Practice* 2009, **15**(1):12-24.
199. Joyce AS, Ennis LP, O'Kelly JG, Ogrodniczuk JS, Piper WE: **Depressive manifestations and differential patterns of treatment outcome in an intensive partial hospitalization treatment program.** *Psychological Services* 2009, **6**(2):154.
200. Gerull F, Meares R, Stevenson J, Korner A, Newman L: **The beneficial effect on family life in treating borderline personality.** *Psychiatry* 2008, **71**(1):59-70.
201. Korner A, Gerull F, Meares R, Stevenson J: **The nothing that is something: Core dysphoria as the central feature of borderline personality disorder. Implications for treatment.** *American Journal of Psychotherapy* 2008, **62**(4):377-394.
202. Petersen B, Toft J, Christensen NB, Foldager L, Munk-Jørgensen P, Lien K, Valbak K: **Outcome of a psychotherapeutic programme for patients with severe personality disorders.** *Nordic Journal of Psychiatry* 2008, **62**(6):450-456.
203. Jørgensen CR, Kjølbye M: **Outcome of psychoanalytically oriented outpatient treatment of borderline personality disorder.** *Nordic Psychology* 2007, **59**(2):164-180.
204. Korner A, Gerull F, Meares R, Stevenson J: **Borderline personality disorder treated with the conversational model: A replication study.** *Comprehensive Psychiatry* 2006, **47**(5):406-411.
205. Stevenson J, Meares R, D'angelo R: **Five-year outcome of outpatient psychotherapy with borderline patients.** *Psychological Medicine* 2005, **35**(1):79.
206. Wilberg T, Karterud S, Pedersen G, Urnes Ø, Irion T, Brabrand J, Haavaldsen G, Leirvåg H, Johnsen K, Andreasen H: **Outpatient group psychotherapy following day treatment for patients with personality disorders.** *Journal of Personality Disorders* 2003, **17**(6):510-521.
207. Lorentzen S, Bøgwald KP, Høglend P: **Change during and after long-term analytic group psychotherapy.** In.: Guilford Press; 2002.
208. Cookson A, Espie J, Yates K: **The Edinburgh Project: A pilot study for the psychotherapeutic treatment of borderline and other severe personality disorders.** *British Journal of Psychotherapy* 2001, **18**(1):68-88.

209. Meares R, Stevenson J, Comerford A: **Psychotherapy with borderline patients: I. A comparison between treated and untreated cohorts.** *Australian & New Zealand Journal of Psychiatry* 1999, **33**(4):467-472.
210. Barber JP, Morse JQ, Krakauer ID, Chittams J, Crits-Christoph K: **Change in obsessive-compulsive and avoidant personality disorders following time-limited supportive-expressive therapy.** *Psychotherapy: Theory, Research, Practice, Training* 1997, **34**(2):133.
211. Monsen J, Odland T, Faugli A, Daae E, Eilertsen D: **Personality disorders: Changes and stability after intensive psychotherapy focusing on affect consciousness.** *Psychotherapy Research* 1995, **5**(1):33-48.
212. Monsen J, Odland T, Faugli A, Daae E, Eilertsen DE: **Personality disorders and psychosocial changes after intensive psychotherapy: A prospective follow - up study of an outpatient psychotherapy project, 5 years after end of treatment.** *Scandinavian Journal of Psychology* 1995, **36**(3):256-268.
213. Karterud S, Vaglum S, Friis S, Irion T, Johns S, Vaglum P: **Day hospital therapeutic community treatment for patients with personality disorders: An empirical evaluation of the containment function.** *Journal of Nervous and Mental Disease* 1992.
214. Meares R, Stevenson J: **An outcome study of psychotherapy for patients with borderline personality disorder.** *American Journal of Psychiatry* 1992, **149**(3):358-362.
215. Clarkin JF, Foelsch PA, Levy KN, Hull JW, Delaney JC, Kernberg OF: **The development of a psychodynamic treatment for patients with borderline personality disorder: A preliminary study of behavioral change.** *Journal of Personality Disorders* 2001, **15**(6):487-495.
216. Berthoud L, Pascual-Leone A, Caspar F, Tissot H, Keller S, Rohde KB, de Roten Y, Despland J-N, Kramer U: **Leaving distress behind: A randomized controlled study on change in emotional processing in borderline personality disorder.** *Psychiatry* 2017, **80**(2):139-154.
217. Kramer U, Stulz N, Berthoud L, Caspar F, Marquet P, Kolly S, De Roten Y, Despland J-N: **The shorter the better? A follow-up analysis of 10-session psychiatric treatment including the motive-oriented therapeutic relationship for borderline personality disorder.** *Psychotherapy Research* 2017, **27**(3):362-370.
218. Kramer U, Kolly S, Berthoud L, Keller S, Preisig M, Caspar F, Berger T, De Roten Y, Marquet P, Despland J-N: **Effects of motive-oriented therapeutic relationship in a ten-session general psychiatric treatment of borderline personality disorder: A randomized controlled trial.** *Psychotherapy and Psychosomatics* 2014, **83**(3):176-186.
219. Kramer U, Berger T, Kolly S, Marquet P, Preisig M, de Roten Y, Despland J-N, Caspar F: **Effects of motive-oriented therapeutic relationship in early-phase treatment of borderline personality disorder: A pilot study of a randomized trial.** *The Journal of Nervous and Mental Disease* 2011, **199**(4):244-250.
220. Hellerstein DJ, Rosenthal RN, Pinsker H, Samstag LW, Muran JC, Winston A: **A randomized prospective study comparing supportive and dynamic therapies: Outcome and alliance.** *The Journal of Psychotherapy Practice and Research* 1998, **7**(4):261.

221. Penzenstadler L, Kolly S, Rothen S, Khazaal Y, Kramer U: **Effects of substance use disorder on treatment process and outcome in a ten-session psychiatric treatment for borderline personality disorder.** *Substance Abuse Treatment, Prevention, and Policy* 2018, **13**(1):1-11.
222. Van Manen JG, Horn EK, Stijnen T, Timman R, Busschbach JJ, Verheul R: **Tailoring psychotherapy in patients with personality disorders: Matching the level of psychological strengths to the level of stabilizing versus destabilizing psychotherapy.** *Personality and Mental Health* 2015, **9**(2):133-149.
223. Sachdeva S, Goldman G, Mustata G, Deranja E, Gregory RJ: **Naturalistic outcomes of evidence-based therapies for borderline personality disorder at a university clinic: A quasi-randomized trial.** *Journal of the American Psychoanalytic Association* 2013, **61**(3):578-584.
224. Wilberg T, Friis S, Karterud S, Mehlum L, Urnes Ø, Vaglum P: **Outpatient group psychotherapy: A valuable continuation treatment for patients with borderline personality disorder treated in a day hospital? A 3-year follow-up study.** *Nordic Journal of Psychiatry* 1998, **52**(3):213-221.
225. Chiesa M, Cirasola A, Fonagy P: **Four years comparative follow - up evaluation of community - based, step - down, and residential specialist psychodynamic programmes for personality disorders.** *Clinical Psychology & Psychotherapy* 2017, **24**(6):1331-1342.
226. Bartak A, Andrea H, Spreeuwenberg MD, Ziegler UM, Dekker J, Rossum BV, Hamers EF, Scholte W, Aerts J, Busschbach JJ: **Effectiveness of outpatient, day hospital, and inpatient psychotherapeutic treatment for patients with cluster B personality disorders.** *Psychotherapy and Psychosomatics* 2011, **80**(1):28-38.
227. Bartak A, Spreeuwenberg MD, Andrea H, Holleman L, Rijnierse P, Rossum BV, Hamers EF, Meerman AM, Aerts J, Busschbach JJ: **Effectiveness of different modalities of psychotherapeutic treatment for patients with cluster C personality disorders: results of a large prospective multicentre study.** *Psychotherapy and Psychosomatics* 2010, **79**(1):20-30.
228. Chiesa M, Fonagy P, Holmes J, Drahorad C: **Residential versus community treatment of personality disorders: A comparative study of three treatment programs.** *American Journal of Psychiatry* 2004, **161**(8):1463-1470.
229. Chiesa M, Bateman A, Wilberg T, Friis S: **Patients' characteristics, outcome and cost - benefit of hospital - based treatment for patients with personality disorder: A comparison of three different programmes.** *Psychology and Psychotherapy: Theory, Research and Practice* 2002, **75**(4):381-392.
230. Gregory RJ, DeLucia-Deranja E, Mogle JA: **Dynamic deconstructive psychotherapy versus optimized community care for borderline personality disorder co-occurring with alcohol use disorders: A 30-month follow-up.** *The Journal of Nervous and Mental Disease* 2010, **198**(4):292-298.
231. Gregory RJ, Chlebowski S, Kang D, Remen AL, Soderberg MG, Stepkovitch J, Virk S: **A controlled trial of psychodynamic psychotherapy for co-occurring borderline personality disorder and alcohol use disorder.** *Psychotherapy: Theory, Research, Practice, Training* 2008, **45**(1):28.

232. Ridolfi ME, Rossi R, Occhialini G, Gunderson JG: **A clinical trial of a psychoeducation group intervention for patients with borderline personality disorder.** *The Journal of Clinical Psychiatry* 2019, **81**(1):0-0.
233. Leppänen V, Hakko H, Sintonen H, Lindeman S: **Comparing effectiveness of treatments for borderline personality disorder in communal mental health care: The Oulu BPD Study.** *Community Mental Health Journal* 2016, **52**(2):216-227.
234. Amianto F, Ferrero A, Pierò A, Cairo E, Rocca G, Simonelli B, Fassina S, Abbate-Daga G, Fassino S: **Supervised team management, with or without structured psychotherapy, in heavy users of a mental health service with borderline personality disorder: a two-year follow-up preliminary randomized study.** *BMC Psychiatry* 2011, **11**(1):1-14.
235. Doering S, Hörz S, Rentrop M, Fischer-Kern M, Schuster P, Benecke C, Buchheim A, Martius P, Buchheim P: **Transference-focused psychotherapy v. treatment by community psychotherapists for borderline personality disorder: Randomised controlled trial.** *The British Journal of Psychiatry* 2010, **196**(5):389-395.
236. Savard C, Chrétien M, Gamache D, Maranda J, Villeneuve E: **Effectiveness of a 6-week day hospital treatment for personality disorders: Data from a naturalistic study.** *Journal of Psychiatric Practice* 2019, **25**(3):199-205.
237. Lana F, Sánchez-Gil C, Ferrer L, López-Patón N, Litvan L, Marcos S, Sierra AC, Soldevilla JM, Feixas G, Pérez V: **Effectiveness of an integrated treatment for severe personality disorders. A 36-month pragmatic follow-up.** *Revista de Psiquiatría y Salud Mental (English Edition)* 2015, **8**(1):3-10.
238. Nysæter TE, Nordahl HM, Havik OE: **A preliminary study of the naturalistic course of non-manualized psychotherapy for outpatients with borderline personality disorder: Patient characteristics, attrition and outcome.** *Nordic Journal of Psychiatry* 2010, **64**(2):87-93.
239. Halsteinli V, Karterud S, Pedersen G: **When costs count: The impact of staff size, skill mix and treatment intensity on patient outcome for psychotherapeutic day treatment programmes.** *Health Policy* 2008, **86**(2-3):255-265.
240. Karterud S, Pedersen G, Bjordal E, Brabrand J, Friis S, Haaseth Ø, Haavaldsen G, Irion T, Leirvåg H, Tørum E: **Day treatment of patients with personality disorders: Experiences from a Norwegian treatment research network.** *Journal of Personality Disorders* 2003, **17**(3):243-262.
241. Wilberg T, Urnes Ø, Friis S, Irion T, Pedersen G, Karterud S: **One-year follow-up of day treatment for poorly functioning patients with personality disorders.** *Psychiatric Services* 1999, **50**(10):1326-1330.
242. Kvarstein EH, Arnevik E, Halsteinli V, Rø FG, Karterud S, Wilberg T: **Health service costs and clinical gains of psychotherapy for personality disorders: a randomized controlled trial of day-hospital-based step-down treatment versus outpatient treatment at a specialist practice.** *BMC Psychiatry* 2013, **13**(1):1-13.
243. Haeyen S, van Hooren S, van der Veld W, Hutschemaekers G: **Efficacy of art therapy in individuals with personality disorders cluster B/C: A randomized controlled trial.** *Journal of Personality Disorders* 2018, **32**(4):527-542.
244. Andreoli A, Burnand Y, Cochennec M-F, Ohlendorf P, Frambati L, Gaudry-Maire D, Di Clemente T, Hourton G, Lorillard S, Canuto A: **Disappointed love and suicide: a randomized controlled**

- trial of “abandonment psychotherapy” among borderline patients.** *Journal of Personality Disorders* 2016, **30**(2):271-287.
245. Leirvåg H, Pedersen G, Karterud S: **Long-term continuation treatment after short-term day treatment of female patients with severe personality disorders: Body awareness group therapy versus psychodynamic group therapy.** *Nordic Journal of Psychiatry* 2010, **64**(2):115-122.
246. Zanarini MC, Frankenburg FR: **A preliminary, randomized trial of psychoeducation for women with borderline personality disorder.** *Journal of Personality Disorders* 2008, **22**(3):284-290.
247. Cameron LD, Carroll P, Hamilton WK: **Evaluation of an intervention promoting emotion regulation skills for adults with persisting distress due to adverse childhood experiences.** *Child Abuse & Neglect* 2018, **79**:423-433.
248. Pascual JC, Palomares N, Ibáñez Á, Portella MJ, Arza R, Reyes R, Feliu-Soler A, Díaz-Marsá M, Saiz-Ruiz J, Soler J: **Efficacy of cognitive rehabilitation on psychosocial functioning in borderline personality disorder: A randomized controlled trial.** *BMC Psychiatry* 2015, **15**(1):1-9.
249. Huband N, McMurrin M, Evans C, Duggan C: **Social problem-solving plus psychoeducation for adults with personality disorder: pragmatic randomised controlled trial.** *The British Journal of Psychiatry* 2007, **190**(4):307-313.
250. Munroe-Blum H, Marziali E: **A controlled trial of short-term group treatment for borderline personality disorder.** *Journal of Personality Disorders* 1995, **9**(3):190-198.
251. Di Simplicio M, Appiah - Kusi E, Wilkinson P, Watson P, Meiser - Stedman C, Kavanagh DJ, Holmes EA: **Imaginator: A proof - of - concept feasibility trial of a brief imagery - based psychological intervention for young people who self - Harm.** *Suicide and Life - Threatening Behavior* 2020, **50**(3):724-740.
252. Stravynski A, Belisle M, Marcouiller M, Lavallée Y-J, Eue R: **The treatment of avoidant personality disorder by social skills training in the clinic or in real-life settings.** *The Canadian Journal of Psychiatry* 1994, **39**(8):377-383.
253. De Saeger H, Kamphuis JH, Finn SE, Smith JD, Verheul R, van Busschbach JJ, Feenstra DJ, Horn EK: **Therapeutic assessment promotes treatment readiness but does not affect symptom change in patients with personality disorders: Findings from a randomized clinical trial.** *Psychological Assessment* 2014, **26**(2):474.
254. Borschmann R, Barrett B, Hellier JM, Byford S, Henderson C, Rose D, Slade M, Sutherby K, Szmukler G, Thornicroft G: **Joint crisis plans for people with borderline personality disorder: feasibility and outcomes in a randomised controlled trial.** *The British Journal of Psychiatry* 2013, **202**(5):357-364.
255. Ranger M, Tyrer P, Miloska K, Fourie H, Khaleel I, North B, Barrett B: **Cost-effectiveness of nidothrapy for comorbid personality disorder and severe mental illness: Randomized controlled trial.** *Epidemiology and Psychiatric Sciences* 2009, **18**(2):128-136.
256. Graham S, Sullivan K, Briggs L, Goodall M, Iraci Capucinello R: **A preliminary service evaluation of a personality disorder case management service.** *Personality and Mental Health* 2019, **13**(2):65-74.

257. Solberg JJ, Deyo-Svendsen ME, Nylander KR, Bruhl EJ, Heredia Jr D, Angstman KB: **Collaborative care management associated with improved depression outcomes in patients with personality disorders, compared to usual primary care.** *Journal of Primary Care & Community Health* 2018, **9**:2150132718773266.
258. Stringer B, van Meijel B, Karman P, Koekkoek B, Hoogendoorn A, Kerkhof A, Beekman A: **Feasibility and preliminary results of a Collaborative Care program for patients with severe personality disorders: A comparative multiple case study.**
259. Antonsen BT, Kvarstein EH, Urnes Ø, Hummelen B, Karterud S, Wilberg T: **Favourable outcome of long-term combined psychotherapy for patients with borderline personality disorder: Six-year follow-up of a randomized study.** *Psychotherapy Research* 2017, **27**(1):51-63.
260. Antonsen BT, Klungsøyr O, Kamps A, Hummelen B, Johansen MS, Pedersen G, Urnes Ø, Kvarstein EH, Karterud S, Wilberg T: **Step-down versus outpatient psychotherapeutic treatment for personality disorders: 6-year follow-up of the Ullevål personality project.** *BMC Psychiatry* 2014, **14**(1):1-12.
261. Gullestad FS, Wilberg T, Klungsøyr O, Johansen MS, Urnes Ø, Karterud S: **Is treatment in a day hospital step-down program superior to outpatient individual psychotherapy for patients with personality disorders? 36 months follow-up of a randomized clinical trial comparing different treatment modalities.** *Psychotherapy Research* 2012, **22**(4):426-441.
262. Arnevik E, Wilberg T, Urnes Ø, Johansen M, Monsen JT, Karterud S: **Psychotherapy for personality disorders: 18 months' follow-up of the Ullevål Personality Project.** *Journal of Personality Disorders* 2010, **24**(2):188-203.
263. Arnevik E, Wilberg T, Urnes Ø, Johansen M, Monsen JT, Karterud S: **Psychotherapy for personality disorders: Short-term day hospital psychotherapy versus outpatient individual therapy - a randomized controlled study.** *European Psychiatry* 2009, **24**(2):71-78.
264. Grenyer BF, Lewis KL, Fanaian M, Kotze B: **Treatment of personality disorder using a whole of service stepped care approach: A cluster randomized controlled trial.** *PloS one* 2018, **13**(11):e0206472.
265. Pearce S, Scott L, Attwood G, Saunders K, Dean M, De Ridder R, Galea D, Konstantinidou H, Crawford M: **Democratic therapeutic community treatment for personality disorder: Randomised controlled trial.** *The British Journal of Psychiatry* 2017, **210**(2):149-156.
266. Huxley E, Lewis KL, Coates AD, Borg WM, Miller CE, Townsend ML, Grenyer BF: **Evaluation of a brief intervention within a stepped care whole of service model for personality disorder.** *BMC Psychiatry* 2019, **19**(1):1-12.
267. Laporte L, Paris J, Bergevin T, Fraser R, Cardin JF: **Clinical outcomes of a stepped care program for borderline personality disorder.** *Personality and Mental Health* 2018, **12**(3):252-264.
268. Barr W, Kirkcaldy A, Horne A, Hodge S, Hellin K, Göpfert M: **Quantitative findings from a mixed methods evaluation of once-weekly therapeutic community day services for people with personality disorder.** *Journal of Mental Health* 2010, **19**(5):412-421.
269. Miller S, Crawford MJ: **Open access community support groups for people with personality disorder: Attendance and impact on use of other services.** *The Psychiatrist* 2010, **34**(5):177-181.

270. Pretorius JL, Albeniz A, Broome M: **Olive Tree community treatment centre for individuals with personality disorder: Naturalistic service evaluation.** *The Psychiatrist* 2010, **34**(1):12-20.
271. Scott L, Kemp E: **Personality disorder in later life: no longer a diagnosis of exclusion.** *Mental Health Review Journal* 2010.