

1 **Mitochondria-targeted antioxidant supplementation augments acute exercise-induced**
2 **increases in muscle PGC1 α mRNA and improves training-induced increases in peak**
3 **power independent of mitochondrial content and function in untrained middle-aged**
4 **men**

5 S. C. Broome¹, T. Pham^{1,2}, A. J. Braakhuis¹, R. Narang³, H. W. Wang^{3,4}, A. J. R. Hickey⁴, C.
6 J. Mitchell⁵, T. L. Merry^{1,6}

7 ¹*Discipline of Nutrition, School of Medical Sciences, University of Auckland, Auckland, New*
8 *Zealand*

9 ²*Auckland Bioengineering Institute, Faculty of Science, The University of Auckland,*
10 *Auckland, New Zealand*

11 ³*School of Medicine, Faculty of Medical and Health Sciences, The University of Auckland,*
12 *Auckland, New Zealand*

13 ⁴*School of Biological Sciences, Faculty of Science, The University of Auckland, Auckland,*
14 *New Zealand*

15 ⁵*School of Kinesiology, University of British Columbia, Vancouver, Canada*

16 ⁶*Maurice Wilkins Centre for Molecular Biodiscovery, University of Auckland, Auckland, New*
17 *Zealand*

18 Corresponding author:

19 Sophie Broome

20 Department of Nutrition, School of Medical Sciences

21 The University of Auckland

22 Private Bag 92019

23 Auckland, New Zealand

24 Ph: +64 276061830

25 s.broome@auckland.ac.nz

26 ABSTRACT

27 The role of mitochondrial ROS production and signalling in muscle adaptations to exercise
28 training has not been explored in detail. Here we investigated the effect of supplementation
29 with the mitochondria-targeted antioxidant MitoQ on a) the skeletal muscle mitochondrial and
30 antioxidant gene transcriptional response to acute high-intensity exercise and b) skeletal
31 muscle mitochondrial content and function following exercise training. In a randomised,
32 double-blind, placebo-controlled, parallel design study, 23 untrained men (age: 44 ± 7 years,
33 VO_{2peak} : 39.6 ± 7.9 ml/kg/min) were randomised to receive either MitoQ (20 mg/d) or a
34 placebo for 10 days before completing a bout of high-intensity interval exercise (cycle
35 ergometer, 10 x 60 s at VO_{2peak} workload with 75 s rest). Blood samples and vastus lateralis
36 muscle biopsies were collected before exercise and immediately and 3 hours after exercise.
37 Participants then completed high-intensity interval training (HIIT; 3 sessions per week for 3
38 weeks) and another blood sample and muscle biopsy were collected. MitoQ
39 supplementation augmented acute exercise-induced increases in skeletal muscle mRNA
40 expression of the major regulator of proteins involved in mitochondrial biogenesis
41 peroxisome proliferator-activated receptor gamma coactivator 1-alpha (PGC1- α). Despite
42 this, training-induced increases in skeletal muscle mitochondrial content were unaffected by
43 MitoQ supplementation. HIIT-induced increases in VO_{2peak} and 20 km time trial performance
44 were also unaffected by MitoQ while MitoQ augmented training-induced increases in peak
45 power achieved during the VO_{2peak} test. These data suggest that MitoQ supplementation
46 enhances the effect of training on peak power, which may be related to the augmentation of
47 skeletal muscle PGC1 α expression following acute exercise. However, this effect does not
48 appear to be related to an effect of MitoQ supplementation on HIIT-induced mitochondrial
49 biogenesis in skeletal muscle and may therefore be the result of other adaptations mediated
50 by PGC1 α .

51 **Keywords:** mitochondria, antioxidant, exercise, ROS, adaptation, performance

52 INTRODUCTION

53 Exercise-induced stressors trigger an acute and transient upregulation of gene expression in
54 skeletal muscle that, if reinforced by repeated exercise bouts as part of an exercise training
55 program, results in phenotypic adaptations that improve skeletal muscle function [1, 2]. In
56 recent years, reactive oxygen species (ROS) have become recognised as important
57 exercise-stress signalling intermediates that regulate the adaptive response to exercise
58 training [3-5]. Since high ROS levels can impair muscle function [6, 7], and are therefore
59 thought to limit exercise performance, antioxidant supplements are commonly consumed by
60 athletes in an effort to limit exercise-induced increases in oxidative stress [8]. While
61 antioxidant supplementation may have benefits for acute performance in some instances [9,
62 10], generalised antioxidant supplementation has been shown to impair transcriptional
63 responses to acute exercise [4, 5, 11-13], resulting in attenuated training-induced
64 performance [11] and metabolic [5] benefits.

65 A central adaptation to regular endurance exercise training is increased skeletal muscle
66 mitochondrial volume and enhanced antioxidant capacity [14, 15]. The redox sensitive
67 transcription factor peroxisome proliferator-activated receptor gamma coactivator 1-alpha
68 (PGC1 α) increases with exercise, is involved in coordinating mitochondrial biogenesis, and
69 upregulates expression of antioxidant enzymes, including superoxide dismutase (SOD),
70 glutathione peroxidase (GPx), and catalase [16]. Studies in mice and humans have shown
71 that supplementation with the general antioxidants vitamin C and E attenuates exercise
72 induced-increases in PGC1 α [5, 11, 12], which may explain why some studies report that
73 general antioxidant supplementation negates some of the beneficial effects of exercise, such
74 as increases in skeletal muscle mitochondrial content and antioxidant capacity [5, 11, 12],
75 and improvements in insulin sensitivity [5].

76 While the major sources of ROS during exercise appear to be non-mitochondrial (i.e.
77 NADPH oxidase (NOX) enzymes [17]), there is also evidence of changes in the

78 mitochondrial redox environment during exercise with reports of increased skeletal muscle
79 mitochondrial DNA (mtDNA) damage [18] and oxidation of the mitochondrial matrix localised
80 peroxiredoxin (Prx) 3 [19]. To date, most human studies investigating the effect of
81 antioxidant supplementation on skeletal muscle responses to exercise have used general
82 antioxidants, such as N-acetylcysteine or a combination of vitamin C and E [5, 11, 12, 20],
83 which may result in indiscriminate neutralisation of ROS from multiple intracellular sources.
84 Therefore, the role of mitochondrial ROS production and signalling during exercise in muscle
85 adaptations to exercise training is yet to be explored in detail.

86 Supplementation with mitochondria-targeted coenzyme Q10 (mitoquinone; MitoQ) has
87 previously been shown to attenuate exercise-induced increases in mtDNA damage in human
88 skeletal muscle [18]. MitoQ consists of a ubiquinone moiety, which prevents lipid
89 peroxidation by acting as a chain-breaking antioxidant and recycling the α -tocopheroxyl
90 radical to its active form [21, 22], conjugated to a triphenylphosphonium cation to facilitate
91 accumulation within mitochondria [23, 24]. Here we investigated the effect of MitoQ
92 supplementation on a) skeletal muscle mitochondrial and antioxidant gene transcriptional
93 response to acute high-intensity exercise and b) skeletal muscle mitochondrial content and
94 function following exercise training.

95 **MATERIALS AND METHODS**

96 **Participants**

97 Twenty-five healthy middle-aged men were recruited via advertisements and provided
98 written informed consent to participate in the trial (Supplementary figure 1). A middle-aged
99 cohort was studied as use of dietary supplements has been shown to increase with age [25].
100 Two participants withdrew from the study before the acute exercise trial due to time
101 commitments and one participant withdrew from the study after completion of the acute
102 exercise trial due to illness. Results are presented for the 23 participants who completed the
103 acute exercise trial. Participant characteristics are given in Table 1. All participants reported
104 as non-smokers, free of injury and chronic illnesses including cardiovascular and metabolic
105 disease, free from antioxidant supplementation for > 6 weeks before enrollment in the study
106 and completed < 2 h physical activity/week. The study was approved by the Northern Health
107 and Disability Ethics Committee (New Zealand), registered with the Australian New Zealand
108 Clinical Trial Registry (ACTRN12618000238279) on 14th February 2018 and conducted in
109 accordance with the ethical standards laid down in the Declaration of Helsinki.

110 **Exercise study protocol**

111 The study was a double-blind, placebo-controlled parallel design (Figure 1a). Participants
112 completed a ramp-incremental (starting at 60 W and increasing by 15 W per minute)
113 exercise test to voluntary exhaustion using an electromagnetically braked cycle ergometer
114 (Velotron, RacerMate, Seattle, WA) with open-circuit spirometry (Parvo Medics True One
115 2400, Sandy, UT) to determine peak oxygen uptake (VO_{2peak}) and peak power at VO_{2peak} .
116 Participants were familiarised to the time trial, which involved cycling 20 km in the shortest
117 time possible, before returning at least 72 hours later to complete the time trial. The time trial
118 mode of the cycle ergometer allowed for the use of self-selected gearing and participants
119 received visual feedback on distance completed, but not time elapsed. Participants then

120 supplemented with MitoQ (20 mg/day) or a placebo for 10 days before completing the acute
121 exercise trial followed by nine sessions of high-intensity interval training (HIIT). On the day of
122 the acute exercise trial, participants arrived at the laboratory following a 10 hour overnight
123 fast and completed 10 x 60 second cycling intervals at peak power achieved during the
124 ramp-incremental exercise test in visit 1 interspersed with 75 seconds of low-intensity (30 W)
125 cycling (Figure 1b). Heart rate, VO_2 , and the respiratory exchange ratio (RER) were recorded
126 during the fifth exercise interval. Training consisted of nine training sessions and used the
127 same protocol as in the acute exercise trial on non-consecutive days over 3 weeks. Training
128 volume increased from 8 to 12 intervals over the nine training sessions while the power at
129 which participants cycled during the high-intensity intervals remained the same throughout.
130 Participants completed a post-training 20 km time trial 48 hours after the final training
131 session and then returned 48 hours after this time trial to provide a muscle biopsy and blood
132 sample and complete a post-training VO_{2peak} test.

133 **Supplementation**

134 In a double blind, placebo-controlled design, participants were randomized by an
135 independent researcher to receive MitoQ (mitoquinone mesylate 20 mg/day, Alaron; Nelson,
136 New Zealand) or an identical placebo (Alaron; Nelson, New Zealand [tapioca powder,
137 precipitated silica and microcrystalline cellulose 101]). Tablets were dispensed into
138 unmarked bottles by the independent researcher who performed the randomisation, and
139 these bottles were given to the researcher conducting the trial for distribution to participants.
140 Participants were instructed to consume one tablet per day 30 minutes before breakfast for
141 10 days before the acute exercise trial until completion of the final study visit. Adherence to
142 the supplementation protocol was monitored by oversupplying tablets and counting the
143 number of tablets returned at the final study visit. Participants were asked if they had
144 experienced any side effects of supplementation at the acute exercise trial.

145 **Blood and muscle sampling**

146 Blood samples were collected into K2 EDTA vacutainer tubes from a cannula inserted into
147 an antecubital vein before exercise, midway through exercise, immediately after exercise, 15
148 minutes after exercise, and 1, 2, and 3 hours after exercise during the acute exercise trial
149 and following completion of training. Whole blood samples were centrifuged at 2000 g for 10
150 min at 4°C and plasma was recovered and stored at -80°C until analysis. Percutaneous
151 muscle biopsies were obtained from the vastus lateralis muscle before exercise, immediately
152 after exercise, and 3 hours after exercise during the acute exercise trial and following
153 completion of training using a suction-modified Bergstrom biopsy needle under local
154 anaesthesia. Muscle samples were either placed in ice-cold histidine-tryptophan-
155 ketoglutarate (HTK, in mM: 180 histidine, 30 mannitol, 18 histidine-HCl, 15 NaCl, 9 KCl, 4
156 MgCl₂, 2 tryptophan, 1 KH-2-oxoglutarate, 0.015 CaCl₂) transplant buffer (Custodiol, Alsbech
157 Hähnlein, Germany) for mitochondrial respiration analysis or snap-frozen in liquid nitrogen
158 and stored at -80°C until analysis.

159 **Plasma analysis**

160 Plasma lactate was measured using a Cobas 311 analyser (Roche, Mannheim, Germany).
161 Plasma protein carbonyls were measured using a commercially available ELISA kit (BioCell
162 Corporation, Auckland, New Zealand) according to the manufacturer's instructions. Reduced
163 glutathione (GSH) was measured in blood samples using the Bioxytech GSH/GSSG-412
164 assay kit (OxisResearch, Portland, OR, USA) according to the manufacturer's instructions.

165 **Skeletal muscle mtDNA damage**

166 A Long Amplicon-Quantitative PCR (LA-qPCR) assay was used to quantify total mtDNA
167 damage in skeletal muscle samples as described previously [26]. DNA was extracted from
168 muscle using the AllPrep DNA/RNA/miRNA Universal kit (Qiagen, Hilden, Germany)
169 according to manufacturer's instructions. DNA quality and purity were quantified using a
170 Nanodrop One (Thermo Fisher Scientific, Rockford, IL) spectrometry method ($A_{260}/A_{280} >$

171 1.8). DNA was quantified using PicoGreen (Thermo Fisher Scientific, Rockford, IL) according
172 to the manufacturer's instructions. Fluorescence was measured with a 485 nm excitation
173 filter and a 530 nm emission filter and Lambda DNA/HindIII was used to construct a standard
174 curve to determine the DNA concentration of unknown samples.

175 PCR reactions were prepared by combining the following: 10 µl Platinum SuperFi II PCR
176 Master Mix, 5 µl 3 ng/µl sample DNA (total 15 ng template), 0.5 µl of each 10 µM primer and
177 Nuclease-free H₂O for a final volume of 25 µl. Primer sequences are outlined in
178 Supplementary Table 1. Each experiment included a no template control and a 50% control,
179 which contained control DNA. These control samples ensured a lack of contamination in the
180 reaction components and ensured that fragment amplification remained within the linear
181 range. Each sample was vortexed briefly and subsequently centrifuged for 10 seconds
182 before being amplified in a thermal cycler based on the conditions presented in
183 Supplementary Table 2.

184 To quantify products, PCR products were diluted 1 in 10 in TE buffer and 100 µl of the
185 diluted PCR product was added to a white 96-well plate. 100 µl of the PicoGreen reagent
186 was added to each well and the plate was incubated in the dark at room temperature for 5
187 minutes. Fluorescence was measured with an excitation of 485 nm and emission of 530 nm.
188 To control for differences in mitochondrial content between samples, large mitochondrial
189 PCR products were normalised for copy number using fluorescence values of small
190 mitochondrial PCR products as previously described [27].

191 **Gene expression analyses**

192 RNA was extracted from muscle using the AllPrep DNA/RNA/miRNA Universal kit (Qiagen,
193 Hilden, Germany) according to the manufacturer's instructions. The quantity and purity of
194 extracted RNA was quantified by spectrophotometry (Nanodrop One; Thermo Fisher
195 Scientific, Rockford, IL). The Nanostring nCounter gene expression assay (Nanostring

196 Technologies, Seattle, WA) was used to quantify the expression of mitochondrial and
197 antioxidant genes as previously described [28]. Briefly, customised probes carrying a unique
198 fluorescent bar code were hybridized to 70 ng of RNA at 67°C for >16 hours. Purification and
199 binding to the imaging membrane was performed using the nCounter prep station, after
200 which the expression level of each target gene of interest was measured by counting the
201 number of times the relevant barcode was detected using the nCounter Digital Analyzer.
202 Analyses of counts was performed using nSolver 4.0 and mRNA counts were normalised
203 using a pooled reference sample and the geometric mean of four housekeeping genes
204 (HPRT1, EMC7, C1orf43, VCP). Probe sequences are given in Supplementary Table 1.

205 Quantitative real-time PCR (qRT-PCR) was used to assess the effect of MitoQ on exercise-
206 induced skeletal muscle VEGF mRNA expression as hypotheses formed after the
207 Nanostring nCounter gene expression assay had been completed. RNA used for qRT-PCR
208 was reverse-transcribed using a High-Capacity RNA-to-cDNA kit (Life Technologies,
209 Carlsbad, CA). Quantification of genes of interest was performed using a QuantStudio 6
210 PCR System using SYBR green select master mix (Applied Biosystems, Foster City, CA).
211 Each sample was loaded in triplicate and normalized to the geometric mean of two reference
212 genes (B2M and 36B4) Genes of interest were expressed using the delta-delta Ct ($\Delta\Delta Ct$)
213 method. Primer sequences are given in Supplementary Table 1.

214 **Protein expression analyses and immunoblotting**

215 Muscle protein samples were extracted with modified RIPA buffer (50 mM Tris, pH 8.0, 75
216 mM NaCl, 0.3% NP-40, 1% sodium deoxycholate, 0.1% SDS) with EDTA-free protease and
217 phosphatase inhibitors (Sigma Aldrich, St Louis, MO). Protein concentration was determined
218 by BCA assay and sample concentrations were adjusted with Laemmli buffer. Samples were
219 heated at 95°C for 5 minutes. Proteins were separated in polyacrylamide gels and
220 transferred to nitrocellulose membranes (Bio-Rad, Hercules, CA) using a semidry transfer
221 system (Transblot Turbo, Bio-Rad, Hercules, CA). Membranes were blocked in 2% fish

222 gelatin (Sigma Aldrich, St Louis, MO) and then incubated with primary antibody overnight at
223 4°C [GAPDH (Abcam ab9485; 1:10,000), phosphorylated p38 Thr180/Tyr182 (Cell
224 Signalling Technology 4511; 1:1000), total p38 (Cell Signalling Technology 9212; 1:1000),
225 phosphorylated AMPK Thr172 (Cell Signalling Technology 2531; 1:500), total AMPK (Cell
226 Signalling 2532S; 1:5,000), VEGF (Abcam ab46154; 1:2000)]. The following day membranes
227 were incubated with HRP-conjugated secondary antibodies (1:10,000) for 1 hour at room
228 temperature and then developed and imaged using Clarity Western ECL (Bio-Rad, Hercules,
229 CA) chemiluminescence and Chemidoc XRS+ system (Bio-Rad, Hercules, CA). Band
230 intensities were quantified using ImageJ software and each band was normalized to a gel
231 control sample in each respective gel and to a loading control protein.

232 **Citrate synthase enzymatic activity**

233 Citrate synthase (CS) activity was determined in skeletal muscle samples collected before
234 and after training using the same protein extract. Absorbance was measured at 412 nm on a
235 plate reader (BioTek, Winooski, VT) at 25°C in the presence of 0.5 mM oxaloacetate in 50
236 mM Tris HCl buffer pH 8 containing 0.1 mM acetyl CoA and 0.2 mM 5,5'-dithiobis-2-
237 nitrobenzoic acid (DTNB). The slope of CS absorbance change was calculated using an
238 extinction coefficient of $13.6 \text{ mM}^{-1} \text{ cm}^{-1}$ and normalised to protein content.

239 **Mitochondrial respiration**

240 Mitochondrial respiration was measured in fresh skeletal muscle biopsies collected before
241 and after training as previously described [29]. Skeletal muscle fibres were separated in ice-
242 cold BIOPS buffer (in mM: 50 K-MES, 30 sucrose, 20 taurine, 20 imidazole, 15 PCr, 7.23
243 K_2EGTA , 2.77 CaK_2EGTA , 6.56 MgCl_2 , 5.7 ATP, and 0.5 dithiothreitol, pH 7.1 at 0°C) and
244 permeabilised with 50 ug/ml saponin for 30 minutes on ice. Following permeabilization,
245 fibres were washed 3 x 10 minutes in ice-cold MiRO5 buffer (in mM: 110 sucrose, 60 K-

246 lactobionate, 20 HEPES, 20 taurine, 10 KH_2PO_4 , 3 MgCl_2 , 0.5 EGTA, and 1 mg/ml fraction V
247 BSA, pH 7.1 at 37°C) and dry weight was recorded.

248 O_2 consumption rate was measured in permeabilised fibres via high resolution respirometry
249 (Oroboros Instruments, Innsbruck, Austria). Approximately 2-3 mg of tissue was added to
250 each chamber and O_2 concentration was maintained above 300 μM to overcome O_2
251 diffusion barriers in the fibres. Malate (2 mM) and pyruvate (5 mM) were added to initiate
252 complex I (CI) leak respiration. Succinate (10 mM) was then added to measure CI and CII
253 leak respiration after which ADP was titrated to initiate CI and CII oxidative phosphorylation
254 (OXPHOS). Oligomycin (2.5 μM) was added to inhibit ATP synthase and CI and CII leak
255 respiration was measured again allowing for the calculation of leak oxygen consumption and
256 H_2O_2 in the presence of ADP without ATP synthesis. Uncoupled respiration was measured
257 following the addition of carbonyl cyanide m-chlorophenyl hydrazine (CCCP, 0.5 μM).
258 Antimycin A (1 μM) was added to determine non-mitochondrial O_2 consumption rate. CIV
259 (cytochrome C oxidase, CCO) respiration was measured following the addition of ascorbate
260 (2 mM) and N,N,N',N'- tetramethyl-p-phenylenediamine dihydrochloride (TMPD; 0.5 mM).
261 Finally, CIV was inhibited by the addition of azide (100 mM). All respiration rates were
262 corrected for non-mitochondrial O_2 consumption, CCO respiration was corrected with CIV
263 inhibition and data are presented relative to muscle mass. All data were recorded and
264 analysed using DatLab 7.1 software (Oroboros Instruments, Innsbruck, Austria).

265 **Statistical analysis**

266 All data are presented as mean \pm SD unless otherwise stated. Statistical analyses were
267 conducted in Prism 8 (GraphPad Software, Version 8) using unpaired two-tailed Student's t-
268 test and two-way repeated-measures ANOVA with Fisher's least significant difference (LSD)
269 post hoc analysis as indicated in figure legends. Statistical significance was determined as
270 $p < 0.05$.

271 RESULTS

272 Supplementation adherence and exercise intensity during the acute exercise trial

273 Adherence to supplementation instructions was >95% for both groups and there was no
274 difference in supplementation adherence between groups (placebo; $98 \pm 2\%$, MitoQ; $97 \pm$
275 5% , $p=0.610$). No side effects of supplementation were reported. MitoQ and placebo groups
276 were matched for workload during the acute exercise bout (Table 2). Consistent with both
277 groups experiencing similar levels of exercise stress, mean heart rate and VO_2 recorded
278 during the fifth interval of the acute exercise bout and plasma lactate measured immediately
279 after exercise were similar between groups (Table 2). Despite participants exercising at
280 $>80\% VO_{2peak}$ and having an ~ 11 -fold increase in plasma lactate from rest, exercise did not
281 result in increased phosphorylation of skeletal muscle p38 MAPK or AMPK (Supplementary
282 Figure 2). However, MitoQ supplementation was associated with higher p38 MAPK but not
283 AMPK phosphorylation (Supplementary Figure 1).

284 Effect of MitoQ supplementation and exercise on plasma and skeletal muscle 285 oxidative stress markers

286 To assess whether high-intensity interval exercise or MitoQ supplementation in healthy
287 middle-aged men alters circulating or skeletal muscle markers of oxidative stress, we
288 assessed plasma protein carbonyl concentration and skeletal muscle mtDNA damage.
289 Following 10 days of MitoQ or placebo supplementation, both groups had similar resting
290 plasma protein carbonyl concentrations (Figure 2a) and mtDNA damage (Figure 2c). Acute
291 exercise had no effect on plasma protein carbonyl concentrations (Figure 2b) and mtDNA
292 damage (Figure 2d). Similarly, blood reduced glutathione concentrations were not affected
293 by MitoQ supplementation (Figure 2e) or acute exercise (Figure 2f).

294 Effect of MitoQ supplementation on the skeletal muscle transcriptional response to 295 acute exercise

296 General antioxidant supplementation has been shown to attenuate acute exercise-induced
297 increases in skeletal muscle mitochondrial biogenesis and antioxidant markers in young men
298 [5]. PGC1 α is a major regulator of proteins involved in exercise-induced mitochondrial
299 biogenesis and antioxidant enzymes, therefore, we assessed *PPARGC1A* mRNA levels in
300 skeletal muscle immediately (post) and 3 h after exercise. *PPARGC1A* mRNA was
301 significantly increased 3 h after exercise, and this exercise-induced increase was greater in
302 the MitoQ group compared to placebo (placebo; 3.15 \pm 2.50-fold, MitoQ; 6.80 \pm 3.42-fold,
303 interaction effect p=0.008; Figure 3a). Surprisingly, in this middle-aged cohort, acute high-
304 intensity exercise did not affect expression of the mitochondrial biogenesis marker *COX4*
305 mRNA, and resulted in a decrease in the expression of *TFAM* and *CYTB* mRNA, which was
306 not affected by MitoQ supplementation (Figure 3, b-d). MitoQ supplementation did not affect
307 the basal (resting) mRNA expression of assessed mitochondrial and antioxidant markers
308 (Figure 3e). Neither MitoQ or exercise altered the expression of the cytosolic antioxidant
309 genes *CAT* or *TRX1* while *GPX1* and *SOD1* mRNA expression decreased with exercise
310 independent of supplementation group (Figure 3f-i). In contrast, *SOD2* mRNA was increased
311 by acute exercise and this was unaffected by MitoQ supplementation (Figure 3j).

312 **Effect of MitoQ supplementation on training responses**

313 Having observed that MitoQ supplementation augmented acute exercise-induced increases
314 in skeletal muscle *PPARGC1A* mRNA, we next investigated whether this might translate to
315 differential increases in performance or mitochondrial function in response to three weeks of
316 high intensity interval training (HIIT). While MitoQ supplementation did not affect HIIT-
317 induced improvements in VO_{2peak} (placebo; 9.52 \pm 9.21%, MitoQ; 10.03 \pm 11.97%, p=0.911,
318 Figure 4a-b) or time to complete a 20 km cycling time trial (placebo; -2.36 \pm 3.91 min, MitoQ;
319 -4.43 \pm 3.68 min, p=0.216 for interaction effect; Figure 4c-d), a significant interaction (time x
320 treatment) (p=0.03) was observed for peak power achieved during the VO_{2peak} test (Figure

321 4e) with MitoQ supplementation resulting in a significantly greater relative increase (placebo;
322 8.15 ± 7.01 W, MitoQ; 13.64 ± 4.75 W, $p=0.044$, Figure 4f).

323 To determine whether the improvement in peak power at VO_{2peak} may be attributed to
324 differential mitochondrial responses to exercise when supplementing with MitoQ, we
325 assessed skeletal muscle mitochondrial content and function in skeletal muscle samples
326 collected before and following HIIT. MitoQ and placebo supplementation groups had similar
327 muscle citrate synthase (CS) activity prior to training (placebo; 36.06 ± 21.46 U/g protein,
328 MitoQ; 46.97 ± 15.25 U/g protein, $p=0.217$) and HIIT increased CS activity to a similar extent
329 in both groups (Figure 5a; $p=0.03$ for time effect). In contrast to our previous observations in
330 young participants [30], and despite increases in CS, HIIT did not affect isolated
331 mitochondrial oxygen consumption in any of the assessed respiration states (Figure 5b).
332 MitoQ and placebo supplemented groups had similar mitochondrial respiration both pre- and
333 post-HIIT. Similarly, neither HIIT or MitoQ affected basal skeletal muscle *PPARGC1A*,
334 *TFAM*, *COX4* or *CYTB* mRNA expression (Figure 5c-d).

335 Since PGC1 α also regulates expression of antioxidant enzymes [16], we measured the
336 expression of antioxidant genes in muscle samples collected before and after training. While
337 neither HIIT or MitoQ supplementation affected muscle *CAT*, *SOD1*, or *SOD2* mRNA
338 expression (Figure 5e-f), the mRNA expression *GPX1* and *TRX1* were elevated following
339 HIIT independent of MitoQ supplementation (Figure 5e-f).

340 Since MitoQ supplementation had a limited impact on post-HIIT mitochondrial function and
341 antioxidant gene expression were next explored alternative mechanisms through which
342 MitoQ may augment training-induced increases in peak power at VO_{2peak} . MitoQ has
343 previously been reported improve endothelial function [31] and PGC1 α can drive VEGF-
344 mediated angiogenesis [32]. While rested muscle *VEGF* mRNA (Figure 6a) and protein
345 expression (Figure 6b) was not different between supplementation groups either pre- or
346 post-HIIT, the acute exercise-induced increase in *VEGF* mRNA was greater in the MitoQ

347 supplemented group (Figure 6c). Since this study was not designed to assess the effect of
348 MitoQ on HIIT-induced skeletal muscle capillarisation muscle was not collected for
349 histological analysis. It was also interesting to observe that despite MitoQ augmenting peak
350 power output during the VO_{2peak} test post-HIIT, training induced increases in VO_{2peak} were
351 not affected. This may suggest that MitoQ enhances HIIT-associated increases in maximal
352 anaerobic capacity, however mRNA expression of anaerobic metabolism genes *LDHA* and
353 *HKII* was similar in skeletal muscle from MitoQ and placebo treated participants
354 (Supplementary figure 3).

355 DISCUSSION

356 Supplementation with non-targeted antioxidants can result in indiscriminate neutralisation of
357 ROS from multiple intracellular sources and has been shown to attenuate acute exercise-
358 induced activation of redox-sensitive signalling pathways in some instances [4, 13].
359 Consequently, supplementing with non-targeted antioxidants during exercise training may
360 negate or attenuate some of the major beneficial effects of exercise [33]. Here, we found that
361 supplementation with the mitochondria-targeted antioxidant MitoQ did not attenuate HIIT-
362 induced increases in performance (VO_{2peak} and cycling time trial) or skeletal muscle
363 antioxidant gene expression and citrate synthase activity, which is a marker of mitochondrial
364 content. Moreover, MitoQ supplementation was associated with greater acute high-intensity
365 exercise-induced increases in skeletal muscle PGC1 α mRNA expression and post-training
366 improvements in peak power during VO_{2peak} assessment.

367 The enhancement of acute exercise-induced increases in skeletal muscle PGC1 α mRNA
368 expression in the MitoQ supplemented group may, in part, explain the greater HIIT
369 associated improvement in peak power during the VO_{2peak} test. PGC1 α is the major regulator
370 of mitochondrial biogenesis [34]; however, despite this, our results indicate that HIIT-
371 associated increases in skeletal muscle citrate synthase were not affected by MitoQ
372 supplementation. This is in agreement with our findings, and others [35], that MitoQ
373 supplementation does not affect post-exercise training VO_{2peak} , skeletal muscle
374 mitochondrial function, or oxidative capacity (as assessed by near-infrared spectroscopy),
375 and suggests that MitoQ may be acting independent of mitochondrial adaptations to improve
376 post-training peak power output. While it is possible this effect is PGC1 α -independent, acute
377 exercise induced increases in PGC1 α have been implicated in coordinating a host of
378 adaptive responses to exercise, including antioxidant expression [36] and angiogenesis (via
379 VEGF) [32]. Unlike some general antioxidant supplements [11], MitoQ supplementation did
380 not alter exercise-induced changes in antioxidant gene expression. However, acute high-

381 intensity exercise-induced increases in muscle VEGF mRNA expression were augmented,
382 potentially suggesting that MitoQ may enhance training-induced increases in skeletal muscle
383 vascularisation and muscle perfusion to increase peak power output. It is possible that an
384 increased skeletal muscle capillary density in the MitoQ group enabled greater metabolite
385 clearance during the VO_{2peak} test, resulting in improved time to exhaustion.

386 We have recently shown that MitoQ supplementation improves 8 km time trial performance
387 in trained cyclists, and this was associated with attenuated exercise-induced increases in
388 plasma F_2 -isoprostanes [37]. Furthermore, infusion of the antioxidant N-acetylcysteine has
389 been shown to improve performance in highly trained cyclists, who can achieve very high
390 workloads during a performance test [10]. In the present study, MitoQ improved peak power
391 output during the VO_{2peak} test, but had no effect on 20 km time trial performance when the
392 participant's power output was much lower. Taken together, these results may indicate that
393 oxidative stress plays a more significant role in impairing performance at exercise intensities
394 that require significant anaerobic component, and would be consistent with trained cyclists
395 being able achieve higher power output and plasma lactate during short-duration (<15 min)
396 all out exercise when supplemented with MitoQ [37]. It is therefore possible that MitoQ is
397 acting as a direct ergogenic aid rather than enhancing exercise-training induced
398 improvements in peak power output.

399 Unfortunately, blood and tissue samples were not collected during the VO_{2peak} tests meaning
400 we could not assess the impact of MitoQ on oxidative stress markers during these tests.
401 Surprisingly, there was no effect of high-intensity interval exercise on the plasma or muscle
402 markers of oxidative stress assessed in the present study. The duration and/or intensity of
403 the exercise protocol used in this study may have been insufficient to induce increases in
404 plasma protein carbonyls and skeletal muscle mtDNA damage in this participant group.
405 Increases in skeletal muscle mtDNA damage have recently been observed following
406 exercise consisting of longer high-intensity intervals and a more intense active recovery in

407 young (25 years) men [18]. The age of the participants may explain the failure of exercise to
408 increase systemic and skeletal muscle markers of oxidative stress in this study. Age-
409 associated increases in basal skeletal muscle ROS levels are associated with increased
410 macromolecule damage [38] and, as a consequence of basal stress, the ability of aged
411 skeletal muscle to further increase ROS production during exercise is attenuated [39].
412 Therefore, it is possible that participants in this study had elevated basal levels of plasma
413 protein carbonyls and mtDNA damage, which could not be further elevated by exercise.

414 It remains to be determined whether augmentation of acute exercise-induced increases in
415 PGC1 α and training induced increases in peak power output by MitoQ are the result of the
416 antioxidant properties of MitoQ or other mechanisms. The triphenylphosphonium cation of
417 MitoQ has been shown to exert biological effects independent of the ubiquinone moiety [40].
418 However, it has been suggested that age-associated oxidative stress can suppress the ability
419 of cytosolic proteins to respond to acute oxidative redox signals during exercise [41].
420 Decreasing mitochondrial ROS (the primary source of ROS in the basal state) through MitoQ
421 supplementation [29] may restore responsiveness of cytosolic signalling proteins to exercise-
422 induced ROS and therefore enhance redox activation of PGC1 α . Alternatively, MitoQ may
423 augment acute exercise-induced increases in PGC1 α mRNA expression through a
424 mechanism involving hypomethylation of the PGC1 α promoter region [42] as ROS
425 generated by mitochondria can affect DNA methylation by acting on the activity and
426 expression of DNA methyltransferases [43].

427 There are several limitations that should be considered when interpreting the results of this
428 study. Participants in this study were all middle-aged untrained males, meaning caution
429 should be taken when applying the results of this study to young trained individuals and
430 females. The age of the participants may have resulted in a blunted response to acute
431 exercise and exercise training in skeletal muscle. We previously reported increases in
432 skeletal muscle mitochondrial respiration following 6 sessions of HIIT in young men [31].

433 While studies report similar mitochondrial adaptations in old and young individuals following
434 longer training periods (>12 weeks) [44], it is possible that training-induced mitochondrial
435 adaptations are blunted in aged muscle in the short term. Another limitation of this study is
436 that we did not quantify the level of MitoQ in skeletal muscle biopsies and cannot confirm
437 that MitoQ was present within the skeletal muscle of the participants during the acute
438 exercise trial and exercise training.

439 Taken together, these results provide evidence that the acute exercise-induced
440 transcriptional response and training-induced mitochondrial adaptations in skeletal muscle
441 are not attenuated by MitoQ supplementation. Furthermore, MitoQ enhances the effect of
442 exercise training on peak power achieved during a ramp-incremental exercise test, which
443 may be related to the augmentation of skeletal muscle PGC1 α mRNA expression following
444 acute exercise by MitoQ. However, this effect does not appear to be related to an effect of
445 MitoQ supplementation on training-induced mitochondrial biogenesis in skeletal muscle and
446 may therefore be the result of other adaptations mediated by PGC1 α .

447 **DECLARATIONS**

448 **Declarations of interest: none**

449 **Funding**

450 This research was funded by Callaghan Innovation in partnership with MitoQ. Sponsors had
451 no role in study design; in the collection, analysis and interpretation of data; in the writing of
452 the report; and in the decision to submit the article for publication.

453 **Acknowledgements**

454 We are thankful to all participants for their contribution to the study. We would also like to
455 acknowledge Randall D'Souza and Chris Hedges for their technical support during this
456 study. TLM is supported by a Rutherford Discovery Fellowship. SCB is supported by a
457 Callaghan Innovation Research & Development grant.

458 REFERENCES

- 459 1. Hawley, John A., et al., *Integrative Biology of Exercise*. Cell, 2014.
460 **159**(4): p. 738-749.
- 461 2. Perry, C.G.R., et al., *Repeated transient mRNA bursts precede increases in*
462 *transcriptional and mitochondrial proteins during training in human*
463 *skeletal muscle*. The Journal of Physiology, 2010. **588**(23): p. 4795-4810.
- 464 3. Margaritelis, N.V., et al., *Redox basis of exercise physiology*. Redox
465 Biology, 2020: p. 101499.
- 466 4. Gomez-Cabrera, M.C., et al., *Decreasing xanthine oxidase-mediated*
467 *oxidative stress prevents useful cellular adaptations to exercise in rats*. J
468 Physiol, 2005. **567**(Pt 1): p. 113-20.
- 469 5. Ristow, M., et al., *Antioxidants prevent health-promoting effects of*
470 *physical exercise in humans*. Proc Natl Acad Sci U S A, 2009. **106**(21): p.
471 8665-70.
- 472 6. Andrade, F.H., et al., *Effect of hydrogen peroxide and dithiothreitol on*
473 *contractile function of single skeletal muscle fibres from the mouse*. J
474 Physiol, 1998. **509**((Pt 2)): p. 565-75.
- 475 7. D., L.G. and W. Håkan, *Acute effects of reactive oxygen and nitrogen*
476 *species on the contractile function of skeletal muscle*. The Journal of
477 Physiology, 2011. **589**(9): p. 2119-2127.
- 478 8. Maughan, R.J., F. Depiesse, and H. Geyer, *The use of dietary supplements*
479 *by athletes*. Journal of Sports Sciences, 2007. **25**(sup1): p. S103-S113.
- 480 9. McKenna, M.J., et al., *N-acetylcysteine attenuates the decline in muscle*
481 *Na⁺,K⁺-pump activity and delays fatigue during prolonged exercise in*
482 *humans*. J Physiol, 2006. **576**(Pt 1): p. 279-88.
- 483 10. Medved, I., et al., *N-acetylcysteine enhances muscle cysteine and*
484 *glutathione availability and attenuates fatigue during prolonged exercise*
485 *in endurance-trained individuals*. Journal of Applied Physiology, 2004.
486 **97**(4): p. 1477-1485.
- 487 11. Gomez-Cabrera, M.C., et al., *Oral administration of vitamin C decreases*
488 *muscle mitochondrial biogenesis and hampers training-induced*
489 *adaptations in endurance performance*. Am J Clin Nutr, 2008. **87**(1): p.
490 142-9.
- 491 12. Strobel, N.A., et al., *Antioxidant supplementation reduces skeletal muscle*
492 *mitochondrial biogenesis*. Med Sci Sports Exerc, 2011. **43**(6): p. 1017-24.
- 493 13. Wadley, G.D., et al., *Xanthine oxidase inhibition attenuates skeletal*
494 *muscle signaling following acute exercise but does not impair*
495 *mitochondrial adaptations to endurance training*. Am J Physiol Endocrinol
496 Metab, 2013. **304**(8): p. E853-62.
- 497 14. Hood, D.A., *Invited Review: Contractile activity-induced mitochondrial*
498 *biogenesis in skeletal muscle*. Journal of Applied Physiology, 2001. **90**(3):
499 p. 1137-1157.
- 500 15. Powers, S.K., et al., *Exercise training-induced alterations in skeletal*
501 *muscle antioxidant capacity: a brief review*. 1999. **31**(7): p. 987-997.
- 502 16. St-Pierre, J., et al., *Suppression of Reactive Oxygen Species and*
503 *Neurodegeneration by the PGC-1 Transcriptional Coactivators*. Cell, 2006.
504 **127**(2): p. 397-408.
- 505 17. Henríquez-Olguin, C., et al., *Cytosolic ROS production by NADPH oxidase*
506 *2 regulates muscle glucose uptake during exercise*. Nature
507 Communications, 2019. **10**(1): p. 4623.

- 508 18. Williamson, J., et al., *The Mitochondria-Targeted Antioxidant MitoQ,*
509 *Attenuates Exercise-Induced Mitochondrial DNA Damage.* Redox Biology,
510 2020: p. 101673.
- 511 19. Stretton, C., et al., *2-Cys Peroxiredoxin oxidation in response to Hydrogen*
512 *Peroxide and contractile activity in skeletal muscle: A novel insight into*
513 *exercise-induced redox signalling?* Free Radical Biology and Medicine,
514 2020.
- 515 20. Petersen, A., et al., *Infusion with the antioxidant N-acetylcysteine*
516 *attenuates early adaptive responses to exercise in human skeletal muscle.*
517 2012. **204**(3): p. 382-392.
- 518 21. James, A.M., R.A.J. Smith, and M.P. Murphy, *Antioxidant and prooxidant*
519 *properties of mitochondrial Coenzyme Q.* Archives of Biochemistry and
520 Biophysics, 2004. **423**(1): p. 47-56.
- 521 22. Ingold, K.U., et al., *Autoxidation of lipids and antioxidation by alpha-*
522 *tocopherol and ubiquinol in homogeneous solution and in aqueous*
523 *dispersions of lipids: unrecognized consequences of lipid particle size as*
524 *exemplified by oxidation of human low density lipoprotein.* Proceedings of
525 the National Academy of Sciences, 1993. **90**(1): p. 45.
- 526 23. Ross, M.F., et al., *Lipophilic triphenylphosphonium cations as tools in*
527 *mitochondrial bioenergetics and free radical biology.* Biochemistry (Mosc),
528 2005. **70**(2): p. 222-30.
- 529 24. Murphy, M.P. and R.A. Smith, *Targeting antioxidants to mitochondria by*
530 *conjugation to lipophilic cations.* Annu Rev Pharmacol Toxicol, 2007. **47**:
531 p. 629-56.
- 532 25. *Dietary supplement use among adults : United States, 2017-2018,* S.
533 National Center for Health, Editor. 2021,
534 <http://dx.doi.org/10.15620/cdc:101131>: Hyattsville, MD.
- 535 26. Santos, J.H., et al., *Quantitative PCR-Based Measurement of Nuclear and*
536 *Mitochondrial DNA Damage and Repair in Mammalian Cells,* in *DNA Repair*
537 *Protocols: Mammalian Systems,* D.S. Henderson, Editor. 2006, Humana
538 Press: Totowa, NJ. p. 183-199.
- 539 27. Furda, A.M., et al., *Analysis of DNA Damage and Repair in Nuclear and*
540 *Mitochondrial DNA of Animal Cells Using Quantitative PCR,* in *DNA Repair*
541 *Protocols,* L. Bjergbæk, Editor. 2012, Humana Press: Totowa, NJ. p. 111-
542 132.
- 543 28. Kulkarni, M.M., *Digital Multiplexed Gene Expression Analysis Using the*
544 *NanoString nCounter System.* Current Protocols in Molecular Biology,
545 2011. **94**(1): p. 25B.10.1-25B.10.17.
- 546 29. Pham, T., et al., *MitoQ and CoQ10 supplementation mildly suppresses*
547 *skeletal muscle mitochondrial hydrogen peroxide levels without impacting*
548 *mitochondrial function in middle-aged men.* 2020.
- 549 30. Hedges, C.P., et al., *Peripheral blood mononuclear cells do not reflect*
550 *skeletal muscle mitochondrial function or adaptation to high-intensity*
551 *interval training in healthy young men.* Journal of Applied Physiology,
552 2019. **126**(2): p. 454-461.
- 553 31. Rossman, M.J., et al., *Chronic Supplementation With a Mitochondrial*
554 *Antioxidant (MitoQ) Improves Vascular Function in Healthy Older Adults.*
555 Hypertension, 2018.
- 556 32. Arany, Z., et al., *HIF-independent regulation of VEGF and angiogenesis by*
557 *the transcriptional coactivator PGC-1 α .* Nature, 2008. **451**(7181): p.
558 1008-1012.

- 559 33. Merry, T.L. and M. Ristow, *Do antioxidant supplements interfere with*
560 *skeletal muscle adaptation to exercise training?* J Physiol, 2016. **594**(18):
561 p. 5135-47.
- 562 34. Lin, J., et al., *Transcriptional co-activator PGC-1 α drives the formation of*
563 *slow-twitch muscle fibres.* Nature, 2002. **418**(6899): p. 797-801.
- 564 35. Shill, D.D., et al., *Mitochondria-specific antioxidant supplementation does*
565 *not influence endurance exercise training-induced adaptations in*
566 *circulating angiogenic cells, skeletal muscle oxidative capacity or maximal*
567 *oxygen uptake.* J Physiol, 2016. **594**(23): p. 7005-7014.
- 568 36. Leick, L., et al., *PGC-1 α is required for training-induced prevention of age-*
569 *associated decline in mitochondrial enzymes in mouse skeletal muscle.*
570 *Experimental Gerontology*, 2010. **45**(5): p. 336-342.
- 571 37. Broome, S.C., et al., *Mitochondria-targeted antioxidant supplementation*
572 *improves 80km time trial performance in middle-aged trained male*
573 *cyclists.* Journal of the International Society of Sports Nutrition, 2021.
574 **18**(1): p. 58.
- 575 38. Bailey, D.M., et al., *Sedentary aging increases resting and exercise-*
576 *induced intramuscular free radical formation.* 2010. **109**(2): p. 449-456.
- 577 39. Close, G.L., et al., *Release of superoxide from skeletal muscle of adult and*
578 *old mice: an experimental test of the reductive hotspot hypothesis.* 2007.
579 **6**(2): p. 189-195.
- 580 40. Bond, S.T., et al., *The antioxidant moiety of MitoQ imparts minimal*
581 *metabolic effects in adipose tissue of high fat fed mice.* 2019. **10**: p. 543.
- 582 41. Jackson, M.J., *On the mechanisms underlying attenuated redox responses*
583 *to exercise in older individuals: A hypothesis.* Free Radical Biology and
584 *Medicine*, 2020. **161**: p. 326-338.
- 585 42. Barrès, R., et al., *Acute Exercise Remodels Promoter Methylation in*
586 *Human Skeletal Muscle.* Cell Metabolism, 2012. **15**(3): p. 405-411.
- 587 43. Mohammed, S.A., et al., *Epigenetic Control of Mitochondrial Function in*
588 *the Vasculature.* 2020. **7**(28).
- 589 44. Cogley, J.N., et al., *Exercise improves mitochondrial and redox-regulated*
590 *stress responses in the elderly: better late than never!* Biogerontology,
591 2015. **16**(2): p. 249-264.

593 TABLES

Table 1. Participant characteristics

Characteristics	Placebo group (n=11)	MitoQ group (n=12)	p value
Age (years)	44 ± 8	44 ± 7	0.972
Height (cm)	175.9 ± 0.1	178.0 ± .01	0.525
Weight (kg)	80.4 ± 16.7	83.3 ± 13.8	0.667
BMI (kg/m ²)	25.7 ± 3.3	26.1 ± 2.9	0.754
V̇O _{2peak} (ml/kg/min)	39.1 ± 7.4	37.0 ± 7.9	0.531
Peak power at VO _{2peak} (W)	237 ± 46	232 ± 34	0.825

Values are mean ± SD

594

Table 2. Measures of exercise intensity during the acute exercise trial

	Placebo	MitoQ	p-value
Heart rate (bpm)	155 ± 23	154 ± 18	0.929
V̇O ₂ (ml/kg/min)	33.4 ± 6.2	29.5 ± 4.8	0.121
Percentage of VO _{2peak} (%)	86 ± 13	81 ± 10	0.391
Workload across work intervals	237 ± 46	232 ± 34	0.825
Post-exercise plasma lactate (mmol/l)	15.16 ± 2.33	13.02 ± 3.21	0.089

Values are mean ± SD

595

Supplementary Table 1. Primer sequences	
Forward Primers	
16.2 kb mitochondrial fragment	TGA GGC CAA ATA TCA TTC TGA GGG GC
120 bp mitochondrial fragment	CTC TCA CTG CCC AAG AAC TAT C
PPARGC1A	CTGCTTCGTCGTCAAAAACAGCTTGACTGGGATGACCGAAGTGCTTGTCCCTCAAGACCTAAGCGACAGCGTGACCTTGTTCA
TFAM	CATCGCTCCGGTGGATGAGGCAGTGACCCGACCCCAATCATCCTCTTCTTTCTTGGTGTGAGAAGATGCTC
COX4	ATTGCTCGCTTGCCAACTAGGCTAAATACCCCTGGTAGCCAACATTCTGCACAATTCTGCGGGTTAGCAGGAAGGTTAGGGAAC
CYTB	GAAGAGAAGTAAGCCGAGGGCGTCTTTGATTGTGTAGTAAGGGTGAAGGCTGTTGAGATTATTGAGCTTCATCATGACCAGAAG
CAT	AGGCGATGGCGGTGAGTGTGAGGATAGGCAAAAAGGCGGCCAAAGACGCCTATCTTCCAGTTTGATCGGGAAACTGGAGACTACGACGCAAACAGCACCCGCTCCTCCGCGACTACTTTATAGGCCGAACCTAACTCCTCGCTACATTCCTATTGTTTTTC
SOD1	AGGCGATGGCGGTGAGTGTGAGGATAGGCAAAAAGGCGGCCAAAGACGCCTATCTTCCAGTTTGATCGGGAAACTGGAGACTACGACGCAAACAGCACCCGCTCCTCCGCGACTACTTTATAGGCCGAACCTAACTCCTCGCTACATTCCTATTGTTTTTC
SOD2	AGGGCAGGTCGGGGAGGCTGTGCTTCTGCCTGGAGCCAATTTGGTTTTACTCCCCTCGATTATGCGGAGTGGTGTTCCTCCCTCGTAGGTTTAGAGGAAACACCCCTCATAGATGAAAACCCCTTTCGGGTTATATCTATCATTTACTTGACACCCT
GPX1	GGCTTCCTGAAAAGCAGTCTTGCTCTCGATCTGCTTCACCATCTTGGCACCGTGTGGACGGCAACTCAGAGATAACGCATAT
TRX1	GCAAGGAGCTGGGGCTCATACTTGATATCCTGAACCTGGAGAGTCAATCTAGGACGCAAACTCACTTGAAGAAGTGAAGCGAG
C1ORF43	TCTTGTCAATGAACTCAGAAACATCAGGCAACTCATGGTTGGAATTCAGCACATTTGGAATGATGTGACTGGGAATAAGACGACG
EMC7	TGAGCACACAGAGGGCTACAATGTGATGGCTCCCATCTCCTTCATCACACCACGCGATGACGTTTCGTCGAAGAGTGCATAATCT
HPRT1	AATGTCTCCTTCCGGATGGGTCGATACGCTCCAGGAAGTACGGCTTAACTGAGGCTGTTAAAGCTGTAGCAACTCTTCCACGA
VCP	TCTTCAAGCCATCCTGTGT
VEGF	GTGATGTGCAGCTGATCAAGACT
36B4	GGCTATCCAGCGTACTCAA
B2M	
Reverse Primers	
16.2 kb mitochondrial fragment	TTT CAT CAT GCG GAG ATG TTG GAT GG
120 bp mitochondrial fragment	GGG CTT TAG GGA GTC ATA AGT G
PPARGC1A	CGAAAGCCATGACCTCCGATCACTCGGAGAAATGTTCACTACTGAAATCACTGTCCCTCAGTTCACCGGTCTTGT
TFAM	CGAAAGCCATGACCTCCGATCACTCCAGGGCACTCAGCACGCCCCACATGCTTCGGAGAAACGC
COX4	CGAAAGCCATGACCTCCGATCACTCAAGTCTTCGCTCTTCAACACATGAGCTCGTACACACACAGAGGTGGAA
CYTB	CGAAAGCCATGACCTCCGATCACTCTCGCTAGGAGGCTGGTGAGAATAGTGTAAATGTCAATTAAGGAGAGAAG
CAT	CGAAAGCCATGACCTCCGATCACTCCTCGAGCACGGTAGGGACAGTTCACAGGTATATGAAGATAATTGGGTCCC
SOD1	CGAAAGCCATGACCTCCGATCACTCCCTGGTTCGAGGACTGCAACGGAAACCCAGACGCTGCA
SOD2	CGAAAGCCATGACCTCCGATCACTCCAGTGCATGATCTGCGGTTGATGTGAGGTTCCAGGGGCGCCGTAGTCGT
GPX1	CGAAAGCCATGACCTCCGATCACTCGGATCAACAGGACCAGCACCCATCTCGAGGTGGTATTTCTGTAAGATCA
TRX1	CGAAAGCCATGACCTCCGATCACTCCAGTGGCTGAGAAGTCAACTACTACAAGTTTATCACCTGCAGCGTCCAA
C1ORF43	CGAAAGCCATGACCTCCGATCACTCCTGGGTTCCAGTTGTAGTAGTCTAGCATCATCATCT
EMC7	CGAAAGCCATGACCTCCGATCACTCGTTTTACTGCTGCCGCTGCTAGATTTGCCAGATGATTTTGAAGAGAAGAG
HPRT1	CGAAAGCCATGACCTCCGATCACTCCAGTGTCTTGTGTAATCCAGCAGGTGAGCAAAGAATTTATAGCCCCCT
VCP	CGAAAGCCATGACCTCCGATCACTCGTTTTCCACCACTTTGAACTCCACAGCACGCATCCCACCACGGACAAGAAA
VEGF	CTTCTTTGGTCTGCATTC
36B4	GATGACCAGCCAAAGGAGA
B2M	GATGAAACCCAGACACATAGCA

Supplementary Table 2. Thermal cycler conditions for amplification of long and short mitochondrial fragments

Cycle step	Long mitochondrial fragment	Short mitochondrial fragment
Initial denaturation	98°C for 30 s	95°C for 5 min
Amplification:	18 cycles of:	17 cycles of:
Denaturation	98°C for 5 s	95°C for 30 s
Annealing	60°C for 10 s	55°C for 30 s
Extension	72°C for 4 min 30 s	72°C for 45 s
Final extension	72°C for 5 s	72°C for 7 min
Hold	4°C	4°C

598 **FIGURE LEGENDS**

599 **Figure 1. Study timeline and acute exercise trial procedures.** Participants completed a
600 VO_{2peak} test and 20 km time trial before supplementing with MitoQ or a placebo for 10 days.
601 Participants then completed a bout of high-intensity interval exercise (10 x 60 s at VO_{2peak}
602 power output). Muscle biopsies were collected before exercise, immediately after exercise,
603 and 3 hours after exercise. Blood samples were collected before exercise and immediately,
604 30 min, and 1, 2, and 3 hours after exercise. Participants then completed 9 sessions of high-
605 intensity interval training before repeating the 20 km time trial and VO_{2peak} test. A muscle
606 biopsy and blood sample were collected on completion of training.

607 **Figure 2. The effect of MitoQ supplementation and exercise on systemic and skeletal**
608 **muscle markers of oxidative stress.** A) Baseline plasma protein carbonyls following 10
609 days of MitoQ or placebo supplementation. B) Plasma protein carbonyls immediately (Post),
610 1 hour (1 h), and 2 hours (2 h) after exercise presented as fold change from pre-exercise. C)
611 Baseline skeletal muscle mtDNA damage following 10 days of MitoQ or placebo
612 supplementation. D) Skeletal muscle mtDNA damage immediately and 3 hours (3 h) after
613 exercise. E) Baseline blood reduced glutathione (GSH) concentration following 10 days of
614 MitoQ or placebo supplementation. F) Blood GSH concentration immediately, 30 min, and 1
615 h after exercise presented as fold change from pre-exercise. Triangles and circles represent
616 individual values. Differences in markers of oxidative stress at baseline were analysed using
617 unpaired Student's t-test. Main two-way repeated measures ANOVA effects are given in
618 figures B, D, and F. Data are presented as mean \pm SD.

619 **Figure 3. The effect of MitoQ supplementation on acute exercise-induced**
620 **mitochondrial and antioxidant gene expression in skeletal muscle.** A-D) Skeletal
621 muscle mitochondrial gene expression immediately (Post) and 3 hours (3 h) after exercise
622 following 10 days of MitoQ or placebo supplementation presented as fold change from pre-
623 exercise. E) Baseline skeletal muscle mitochondrial and antioxidant gene expression

624 following 10 days of MitoQ or placebo supplementation. F-J) Skeletal muscle antioxidant
625 gene expression immediately and 3 hours after exercise following 10 days of MitoQ or
626 placebo supplementation presented as fold change from pre-exercise Triangles and circles
627 represent individual values. Differences in skeletal muscle mitochondrial and antioxidant
628 gene expression at baseline were analysed using unpaired Student's t-test. Main two-way
629 repeated measures ANOVA effects are given in figures A-D and F-J. * $p < 0.05$ for Fisher's
630 LSD post hoc vs. Pre of the same group and # $p < 0.05$ for Fisher's LSD post hoc vs. placebo
631 group at same time point. Data are presented as mean \pm SD. *PPARGC1A*; Peroxisome
632 Proliferator-Activated Receptor Gamma Coactivator 1-Alpha, *COX4*; Cytochrome c oxidase
633 subunit 4, *TFAM*; Mitochondrial Transcription Factor A, *CYTB*; Cytochrome B, *CAT*;
634 Catalase, *TRX1*; Thioredoxin 1; *GPX1*; Glutathione peroxidase 1, *SOD1*; Superoxide
635 Dismutase 1, *SOD2*; Superoxide Dismutase 2.

636 **Figure 4. The effect of MitoQ supplementation on training-induced improvements in**
637 **cycling performance.** Training-induced improvements in A-B) VO_{2peak} , C-D) time to
638 complete the 20 km time trial, and E-F) peak power during the VO_{2peak} test. Triangles and
639 circles represent individual values. Main two-way repeated measures ANOVA effects are
640 shown in figures A, C, and E. * $p < 0.05$ for Fisher's LSD post hoc vs. Pre of the same group,
641 # $p < 0.05$ for Unpaired Student's t-test. Data are presented as mean \pm SD.

642 **Figure 5. The effect of MitoQ supplementation on markers of mitochondrial content**
643 **and function and antioxidant enzyme expression in skeletal muscle following HIIT.** A)
644 Skeletal muscle citrate synthase activity following 3 weeks of HIIT presented as fold change
645 from pre-exercise. B) Skeletal muscle mitochondrial respiration before and after 3 weeks of
646 HIIT. C) Skeletal muscle mitochondrial gene expression before and after 3 weeks of HIIT. D)
647 Skeletal muscle mitochondrial gene expression following 3 weeks of HIIT presented as fold
648 change from pre-exercise. E) Skeletal muscle antioxidant gene expression before and after
649 3 weeks of training. F) Skeletal muscle antioxidant gene expression following 3 weeks of

650 training presented as fold change from pre-exercise Triangles and circles represent
651 individual values. The effect of training and MitoQ supplementation on markers of skeletal
652 muscle mitochondrial biogenesis was measured using two-way repeated measures ANOVA.
653 Data are presented as mean \pm SD. *PPARGC1A*; Peroxisome Proliferator-Activated Receptor
654 Gamma Coactivator 1-Alpha, *COX4*; Cytochrome c oxidase subunit 4, *TFAM*; Mitochondrial
655 Transcription Factor A, *CYTB*; Cytochrome B, *CAT*; Catalase, *TRX1*; Thioredoxin 1; *GPX1*;
656 Glutathione peroxidase 1, *SOD1*; Superoxide Dismutase 1, *SOD2*; Superoxide Dismutase 2.

657 **Figure 6. The effect of MitoQ supplementation on exercise-induced increases in**
658 **skeletal muscle VEGF mRNA expression.** A) Baseline skeletal muscle *VEGF* mRNA
659 expression following 10 days of MitoQ or placebo supplementation. B) Representative blot of
660 baseline skeletal muscle *VEGF* protein expression following 10 days of MitoQ or placebo
661 supplementation and quantification of *VEGF* protein expression relative to *GAPDH* protein
662 expression. Representative bands were run on the same gel and images have been cropped
663 to show *VEGF* protein expression in participants from the placebo and MitoQ group together.
664 C) Skeletal muscle *VEGF* gene expression immediately (Post) and 3 hours (3 h) after
665 exercise following 10 days of MitoQ or placebo supplementation presented as fold change
666 from pre-exercise levels. Triangles and circles represent individual values. Differences in
667 skeletal muscle *VEGF* mRNA and protein expression at baseline were analysed using
668 unpaired Student's t-test. Main two-way repeated measures ANOVA effects are shown in
669 figure C. * $p < 0.05$ for Fisher's LSD post hoc vs. Pre of the same group and # $p < 0.05$ for
670 Fisher's LSD post hoc vs. placebo group at same time point. Data are presented as mean \pm
671 SD. *VEGF*; Vascular Endothelial Growth Factor, *GAPDH*; Glyceraldehyde 3-phosphate
672 dehydrogenase.

673 **Supplementary Figure 1. CONSORT flow chart.** This figure shows the flow of patients
674 through the trial according to the criteria recommended in the CONSORT Guidelines.

675 **Supplementary Figure 2. The effect of exercise and MitoQ supplementation on**
676 **skeletal muscle p38 MAPK and AMPK phosphorylation.** A) Phosphorylated p38 MAPK
677 (pp38) protein expression relative to total p38 MAPK (total p38) protein expression in
678 skeletal muscle before exercise (Pre) and immediately (Post) and 3 hours after exercise (3
679 h) following 10 days of MitoQ supplementation. B) pp38 protein expression relative to total
680 p38 protein expression immediately and 3 h after exercise presented as fold change from
681 pre-exercise. C) Phosphorylated AMPK^{Thr172} (pAMPK^{Thr172}) protein expression relative to
682 total AMPK protein expression in skeletal muscle before exercise and immediately and 3
683 hours after exercise following 10 days of MitoQ supplementation. D) pAMPK^{Thr172} protein
684 expression relative to total AMPK protein expression immediately and 3 h after exercise
685 presented as fold change from pre-exercise. Triangles and circles represent individual
686 values. Main two-way repeated-measures ANOVA effects are given in figures. Values are
687 presented as means \pm SD.

688 **Supplementary Figure 3. The effect of MitoQ supplementation on mRNA expression of**
689 **genes involved in anaerobic metabolism.** Baseline skeletal muscle A) *LDHA* and B) *HKII*
690 mRNA expression following 10 days of MitoQ or placebo supplementation. Skeletal muscle
691 C) *LDHA* and D) *HKII* mRNA expression immediately (Post) and 3 hours (3 h) after exercise
692 presented as fold change from pre-exercise. Skeletal muscle E) *LDHA* and F) *HKII* mRNA
693 expression after 3 weeks of training presented as fold change from pre-training. Triangles
694 and circles represent individual values. Differences in skeletal muscle *LDHA* and *HKII* mRNA
695 expression at baseline were analysed using unpaired Student's t-test. Main two-way
696 repeated measures ANOVA effects are shown in figures C-F. Data are presented as mean \pm
697 SD. *LDHA*; Lactate Dehydrogenase A, *HKII*; Hexokinase II.

Figure 1

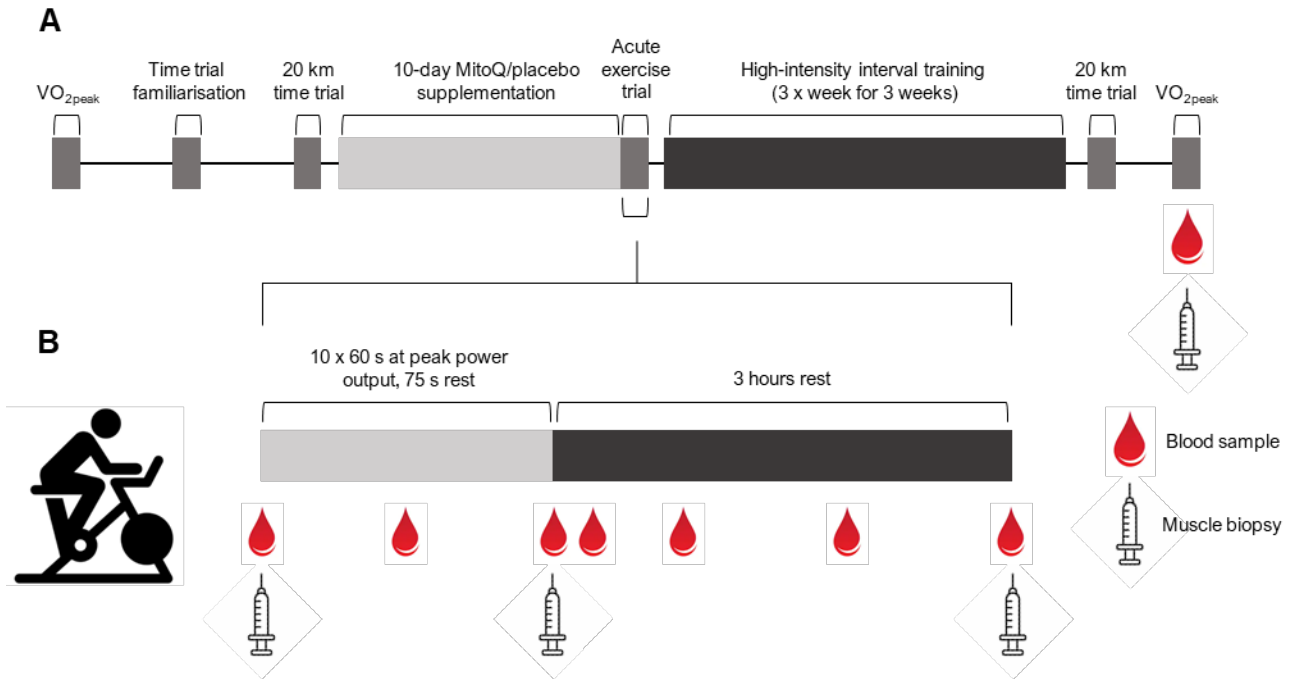


Figure 2

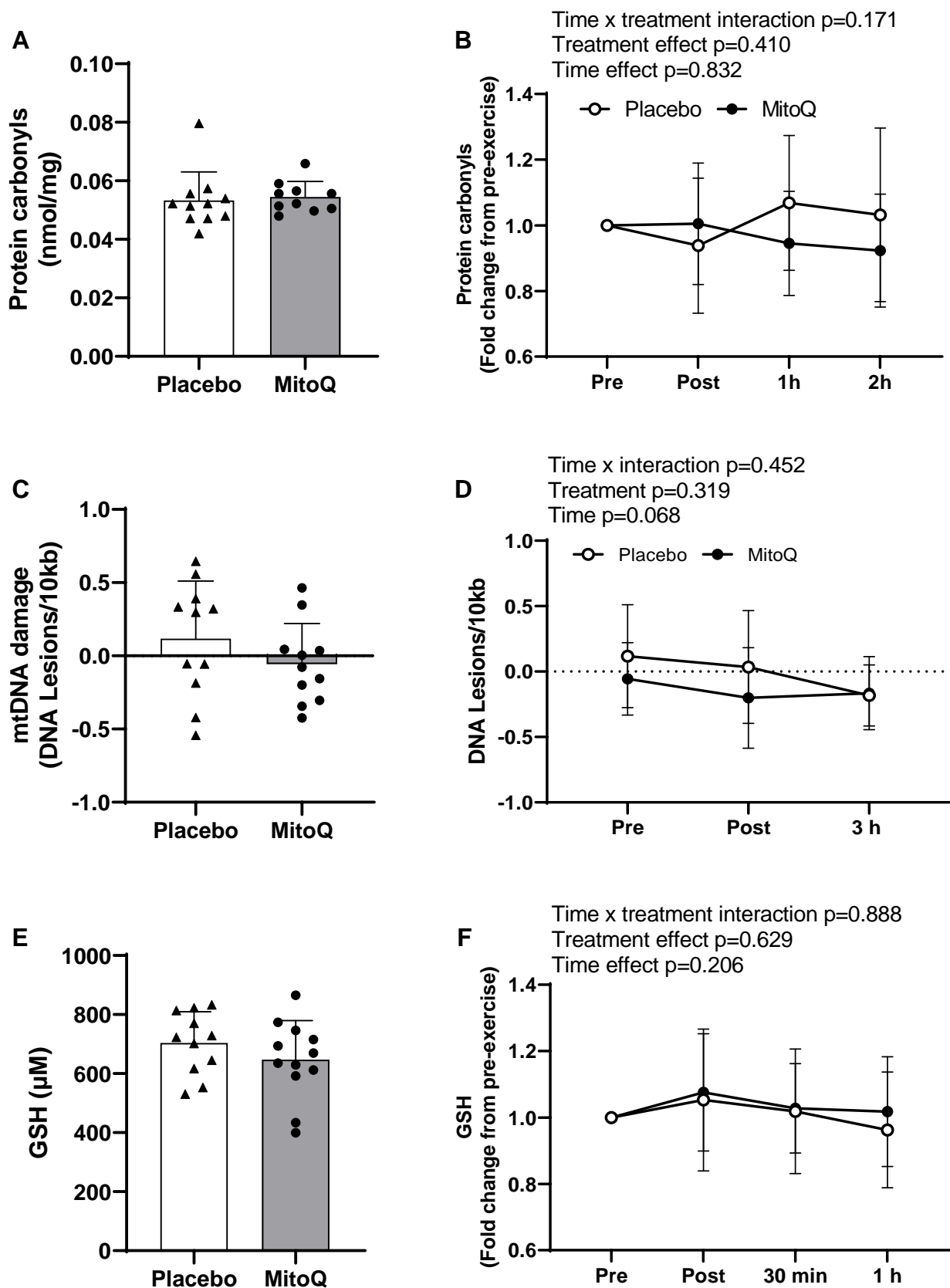


Figure 3

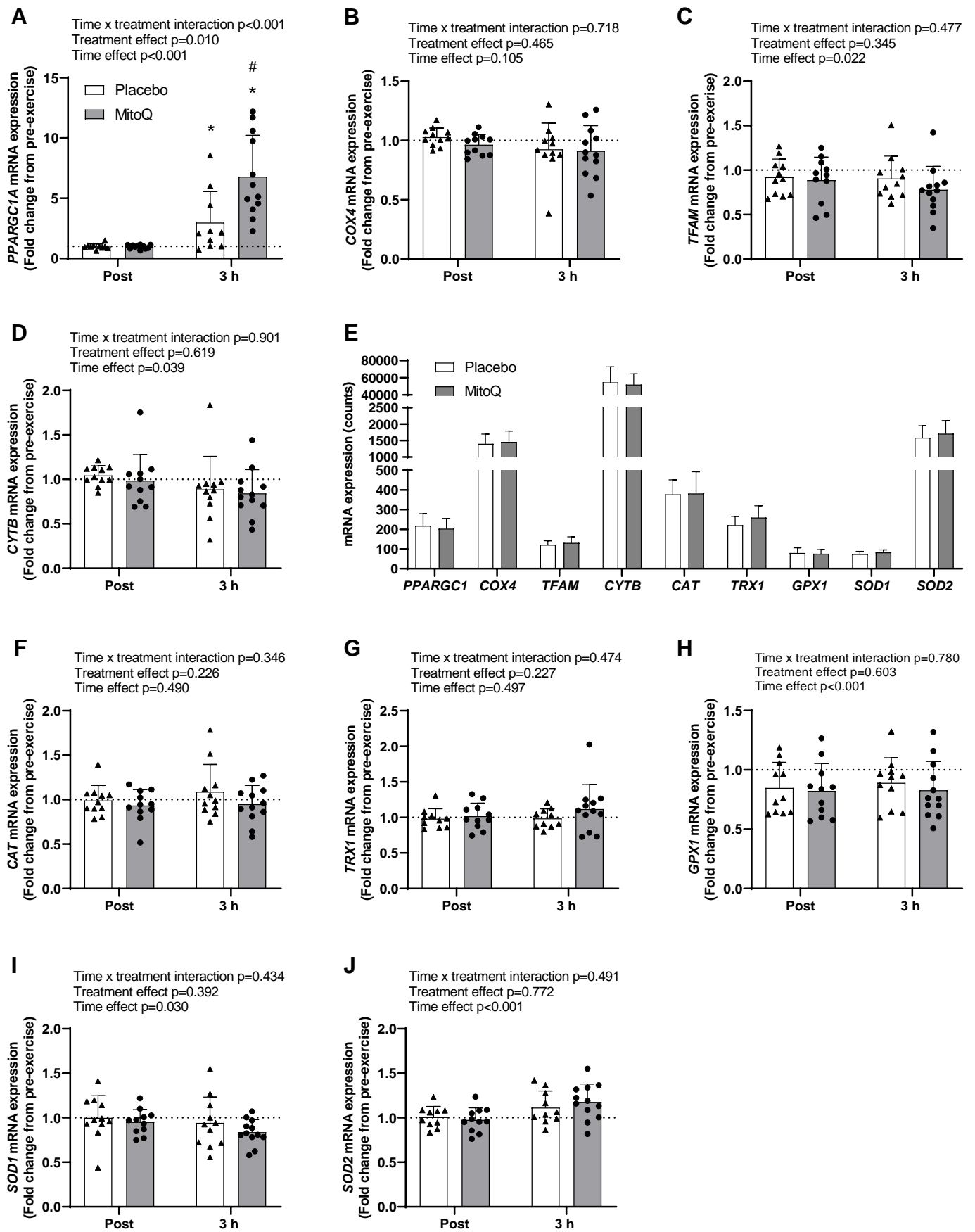
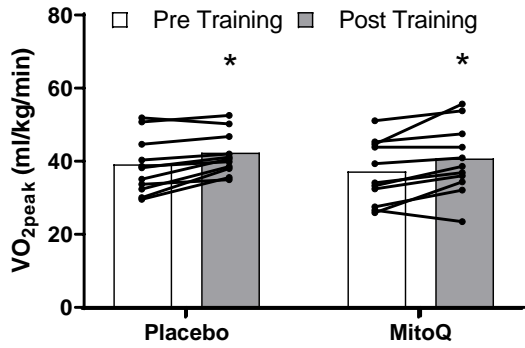
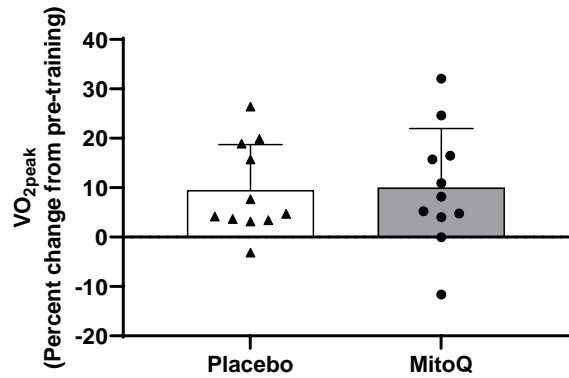


Figure 4

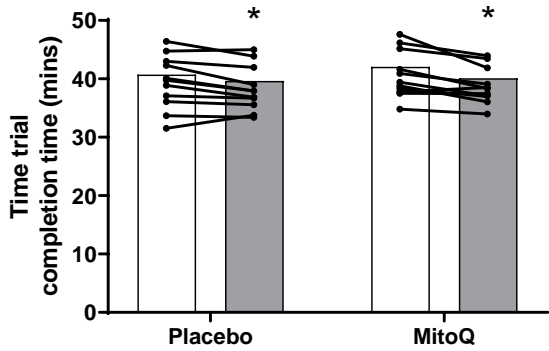
A Time x treatment interaction $p=0.806$
Treatment effect $p=0.611$
Training effect $p<0.001$



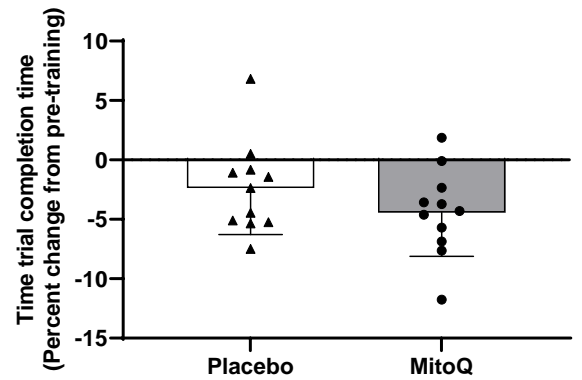
B



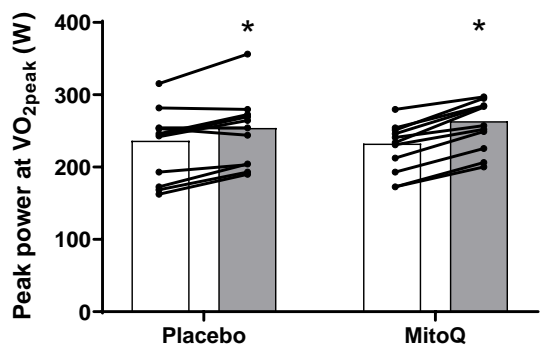
C Time x treatment interaction $p=0.217$
Treatment effect $p=0.595$
Training effect $p<0.001$



D



E Time x treatment interaction $p=0.293$
Treatment effect $p=0.845$
Training effect $p<0.001$



F

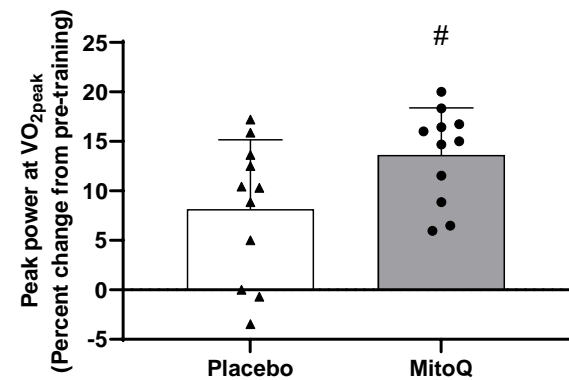


Figure 5

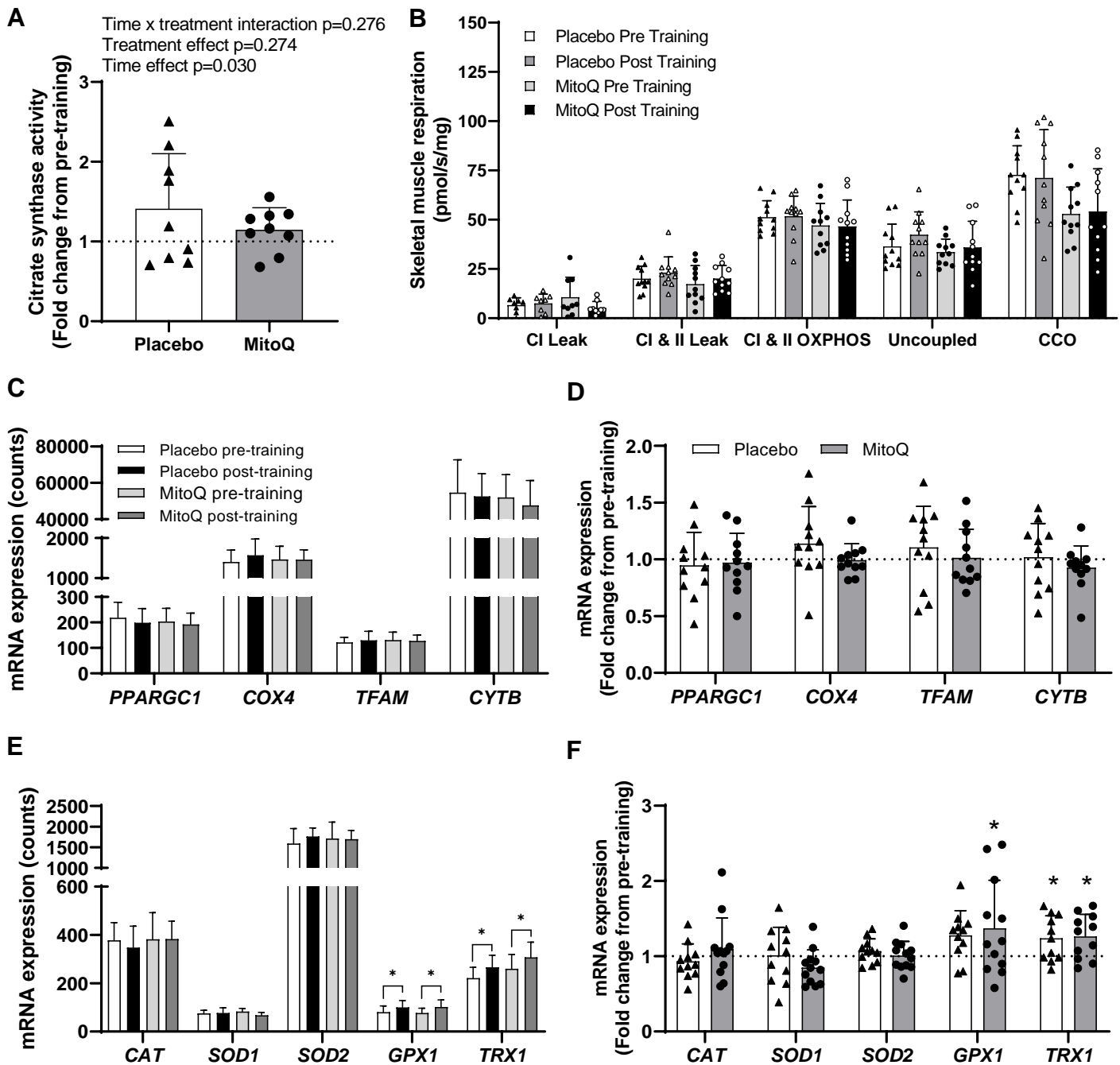


Figure 6

